



NPN LOW POWER SILICON TRANSISTOR

Qualified per MIL-PRF-19500/368

Qualified Levels:
JAN, JANTX,
JANTXV and JANS

DESCRIPTION

This family of high-frequency, epitaxial planar transistors feature low saturation voltage. These devices are also available in TO-39 and low profile U4 and UA packaging. Microsemi also offers numerous other transistor products to meet higher and lower power ratings with various switching speed requirements in both through-hole and surface-mount packages.

Important: For the latest information, visit our website <http://www.microsemi.com>.

FEATURES

- JEDEC registered 2N3439 through 2N3440 series.
- JAN, JANTX, JANTXV, and JANS qualifications are available per MIL-PRF-19500/368.
- RoHS compliant versions available (commercial grade only).
- $V_{CE(sat)} = 0.5\text{ V @ } I_C = 50\text{ mA}$.
- Turn-On time $t_{on} = 1.0\ \mu\text{s max @ } I_C = 20\text{ mA, } I_{B1} = 2.0\text{ mA}$.
- Turn-Off time $t_{off} = 10\ \mu\text{s max @ } I_C = 20\text{ mA, } I_{B1} = -I_{B2} = 2.0\text{ mA}$.

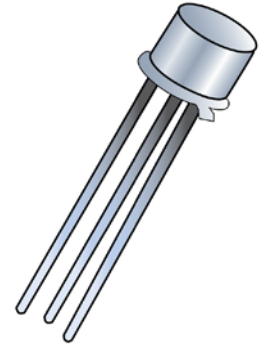
APPLICATIONS / BENEFITS

- General purpose transistors for medium power applications requiring high frequency switching and low package profile.
- Military and other high-reliability applications.

MAXIMUM RATINGS ($T_C = +25^\circ\text{C}$ unless otherwise noted)

Parameters / Test Conditions	Symbol	2N3439	2N3440	Unit
Collector-Emitter Voltage	V_{CEO}	350	250	V
Collector-Base Voltage	V_{CBO}	450	300	V
Emitter-Base Voltage	V_{EBO}	7.0		V
Collector Current	I_C	1.0		A
Total Power Dissipation	P_D	@ $T_A = +25^\circ\text{C}$ ⁽¹⁾	0.8	W
		@ $T_C = +25^\circ\text{C}$ ⁽²⁾	5.0	
Operating & Storage Junction Temperature Range	T_J, T_{stg}	-65 to +200		$^\circ\text{C}$


- Notes:**
1. Derate linearly @ 4.57mW/ $^\circ\text{C}$ for $T_A > +25^\circ\text{C}$.
 2. Derate linearly @ 28.5mW/ $^\circ\text{C}$ for $T_C > +25^\circ\text{C}$




**TO-39 (TO-205AD)
Package**

Also available in:


TO-5 package
(long leaded)

 [2N3439L - 2N3440L](#)

U4 package
(surface mount)

 [2N3439U4 - 2N3440U4](#)

UA package
(surface mount)

 [2N3439UA - 2N3440UA](#)

MSC – Lawrence

6 Lake Street,
Lawrence, MA 01841
Tel: 1-800-446-1158 or
(978) 620-2600
Fax: (978) 689-0803

MSC – Ireland

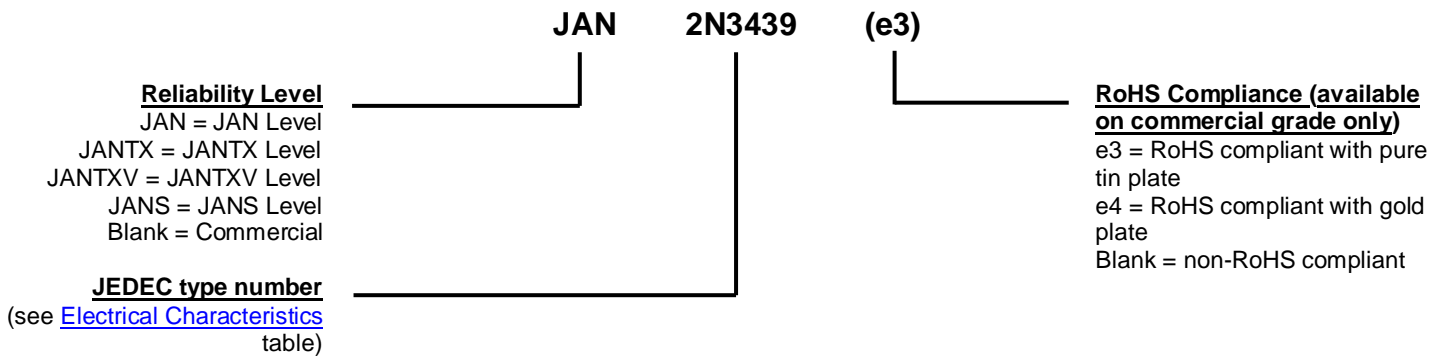
Gort Road Business Park,
Ennis, Co. Clare, Ireland
Tel: +353 (0) 65 6840044
Fax: +353 (0) 65 6822298

Website:

www.microsemi.com

MECHANICAL and PACKAGING

- CASE: Hermetically sealed, kovar base, nickel cap.
- TERMINALS: Tin/lead solder dip or RoHS compliant pure tin (commercial grade only) plate over gold.
- MARKING: Part number, date code, manufacturer's ID.
- POLARITY: NPN (see package outline).
- WEIGHT: Approximately 1.064 grams.
- See [Package Dimensions](#) on last page.

PART NOMENCLATURE

SYMBOLS & DEFINITIONS

Symbol	Definition
C_{obo}	Common-base open-circuit output capacitance.
I_{CEO}	Collector cutoff current, base open.
I_{CEX}	Collector cutoff current, circuit between base and emitter.
I_{EBO}	Emitter cutoff current, collector open.
h_{FE}	Common-emitter static forward current transfer ratio.
V_{CEO}	Collector-emitter voltage, base open.
V_{CBO}	Collector-emitter voltage, emitter open.
V_{EBO}	Emitter-base voltage, collector open.

ELECTRICAL CHARACTERISTICS ($T_A = +25^\circ\text{C}$, unless otherwise noted)

OFF CHARACTERISTICS

Parameters / Test Conditions	Symbol	Min.	Max.	Unit
Collector-Emitter Breakdown Voltage $I_C = 10\text{ mA}$ $R_{BB1} = 470\ \Omega$; $V_{BB1} = 6\text{ V}$ $L = 25\text{ mH (min)}$; $f = 30 - 60\text{ Hz}$	2N3439 2N3440 $V_{(BR)CEO}$	350 250		V
Collector-Emitter Cutoff Current $V_{CE} = 300\text{ V}$ $V_{CE} = 200\text{ V}$	2N3439 2N3440 I_{CEO}		2.0 2.0	μA
Emitter-Base Cutoff Current $V_{EB} = 7.0\text{ V}$	I_{EBO}		10	μA
Collector-Emitter Cutoff Current $V_{CE} = 450\text{ V}$, $V_{BE} = -1.5\text{ V}$ $V_{CE} = 300\text{ V}$, $V_{BE} = -1.5\text{ V}$	2N3439 2N3440 I_{CEX}		5.0 5.0	μA
Collector-Base Cutoff Current $V_{CB} = 360\text{ V}$ $V_{CB} = 250\text{ V}$ $V_{CB} = 450\text{ V}$ $V_{CB} = 300\text{ V}$	2N3439 2N3440 2N3439 2N3440 I_{CBO}		2.0 2.0 5.0 5.0	μA

ON CHARACTERISTICS ⁽¹⁾

Parameters / Test Conditions	Symbol	Min.	Max.	Unit
Forward-Current Transfer Ratio $I_C = 20\text{ mA}$, $V_{CE} = 10\text{ V}$ $I_C = 2.0\text{ mA}$, $V_{CE} = 10\text{ V}$ $I_C = 0.2\text{ mA}$, $V_{CE} = 10\text{ V}$	h_{FE}	40 30 10	160	
Collector-Emitter Saturation Voltage $I_C = 50\text{ mA}$, $I_B = 4.0\text{ mA}$	$V_{CE(sat)}$		0.5	V
Base-Emitter Saturation Voltage $I_C = 50\text{ mA}$, $I_B = 4.0\text{ mA}$	$V_{BE(sat)}$		1.3	V

DYNAMIC CHARACTERISTICS

Parameters / Test Conditions	Symbol	Min.	Max.	Unit
Magnitude of Common Emitter Small-Signal Short-Circuit Forward Current Transfer Ratio $I_C = 10\text{ mA}$, $V_{CE} = 10\text{ V}$, $f = 5.0\text{ MHz}$	$ h_{fe} $	3.0	15	
Forward Current Transfer Ratio $I_C = 5.0\text{ mA}$, $V_{CE} = 10\text{ V}$, $f = 1.0\text{ kHz}$	h_{fe}	25		
Output Capacitance $V_{CB} = 10\text{ V}$, $I_E = 0$, $100\text{ kHz} \leq f \leq 1.0\text{ MHz}$	C_{obo}		10	pF
Input Capacitance $V_{CB} = 5.0\text{ V}$, $I_E = 0$, $100\text{ kHz} \leq f \leq 1.0\text{ MHz}$	C_{ibo}		75	pF

(1) Pulse Test: Pulse Width = 300 μs , duty cycle $\leq 2.0\%$.

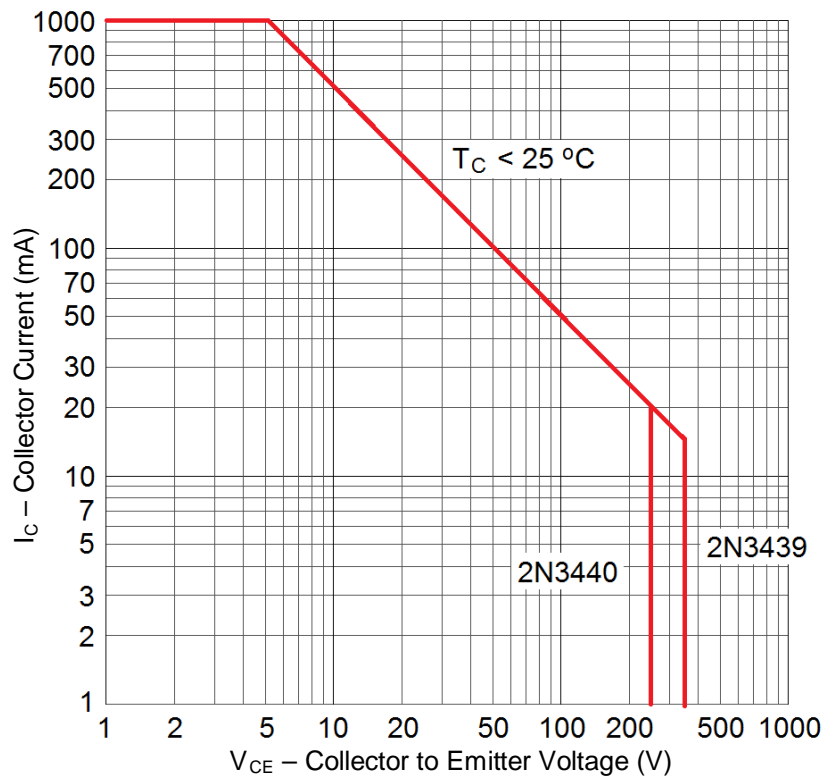
ELECTRICAL CHARACTERISTICS ($T_A = +25^\circ\text{C}$, unless otherwise noted) continued

SWITCHING CHARACTERISTICS

Parameters / Test Conditions	Symbol	Min.	Max.	Unit
Turn-On Time $V_{CC} = 200\text{ V}; I_C = 20\text{ mA}, I_{B1} = 2.0\text{ mA}$	t_{on}		1.0	μs
Turn-Off Time $V_{CC} = 200\text{ V}; I_C = 20\text{ mA}, I_{B1} = -I_{B2} = 2.0\text{ mA}$	t_{off}		10	μs

SAFE OPERATING AREA (See graph below and also reference test method 3053 of [MIL-STD-750](#).)

DC Tests	
$T_C = +25^\circ\text{C}$, 1 Cycle, $t = 1.0\text{ s}$	
Test 1 $V_{CE} = 5.0\text{ V}, I_C = 1.0\text{ A}$	Both Types
Test 2 $V_{CE} = 350\text{ V}, I_C = 14\text{ mA}$	2N3439
Test 3 $V_{CE} = 250\text{ V}, I_C = 20\text{ mA}$	2N3440



Maximum Safe Operating graph (continuous dc)

GRAPHS

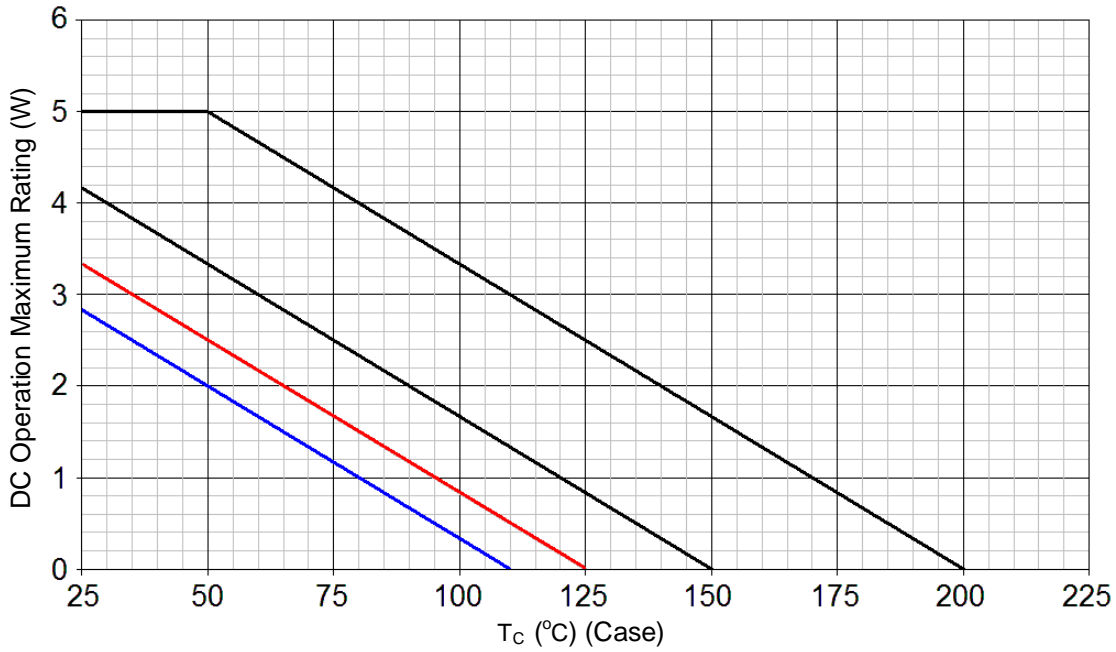


FIGURE 1

Temperature-Power Derating Curve

NOTES: Thermal Resistance Junction to Case = 30.0 °C/W
Max Finish-Alloy Temp = 175.0 °C

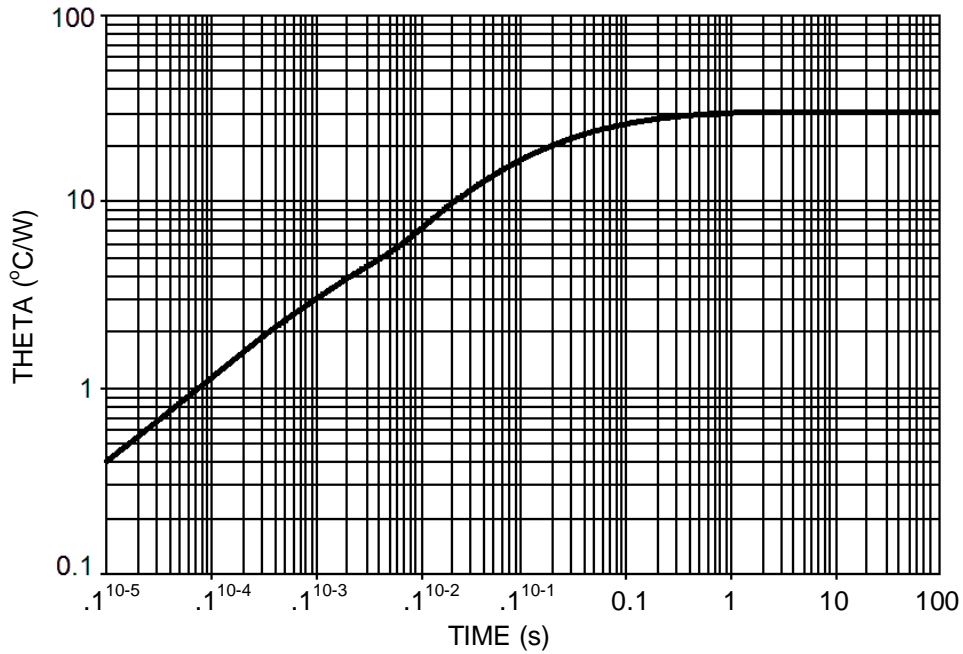
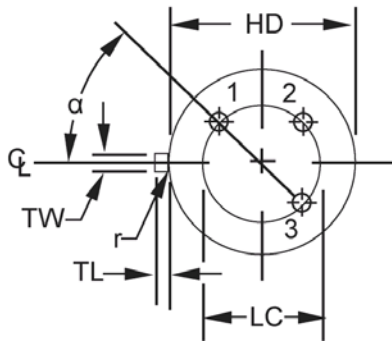
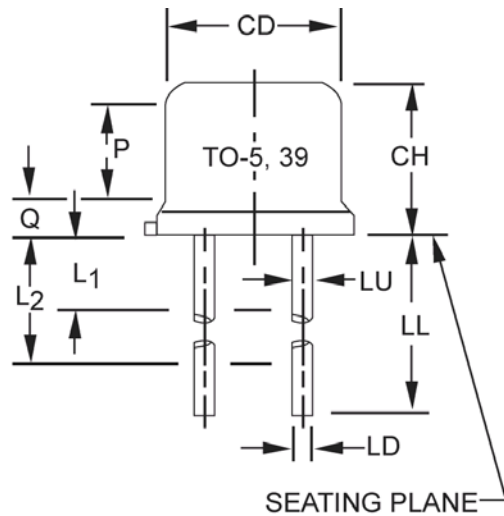


FIGURE 2

Maximum Thermal Impedance

NOTE: $T_c = +25\text{ °C}$, $P_T = 5.0\text{ W}$, thermal resistance $R_{\theta JC} = 30\text{ °C/W}$, steel.

PACKAGE DIMENSIONS


Symbol	Dimensions				Note
	Inches		Millimeters		
	Min	Max	Min	Max	
CD	.305	.335	7.75	8.51	6
CH	.240	.260	6.10	6.60	
HD	.335	.370	8.51	9.40	
LC	.200 TP		5.08 TP		7
LD	.016	.019	0.41	0.48	8,9
LL	See note 14				
LU	.016	.019	0.41	0.48	8,9
L1		.050		1.27	8,9
L2	.250		6.35		8,9
P	.100		2.54		7
Q		.030		0.76	5
TL	.029	.045	0.74	1.14	3,4
TW	.028	.034	0.71	0.86	3
r		.010		0.25	10
α	45° TP		45° TP		7

NOTES:

1. Dimensions are in inches.
2. Millimeters are given for general information only.
3. Beyond r (radius) maximum, TW shall be held for a minimum length of .011 (0.28 mm).
4. Dimension TL measured from maximum HD.
5. Body contour optional within zone defined by HD, CD, and Q.
6. CD shall not vary more than .010 inch (0.25 mm) in zone P. This zone is controlled for automatic handling.
7. Leads at gauge plane .054 +.001 -.000 inch (1.37 +0.03 -0.00 mm) below seating plane shall be within .007 inch (0.18 mm) radius of true position (TP) at maximum material condition (MMC) relative to tab at MMC. The device may be measured by direct methods or by gauging procedure.
8. Dimension LU applies between L1 and L2. Dimension LD applies between L2 and LL minimum. Diameter is uncontrolled in and beyond LL minimum.
9. All three leads.
10. The collector shall be internally connected to the case.
11. Dimension r (radius) applies to both inside corners of tab.
12. In accordance with ASME Y14.5M, diameters are equivalent to Φ x symbology.
13. Lead 1 = emitter, lead 2 = base, lead 3 = collector.
14. For transistor types 2N3439 and 2N3440 (TO-39), dimension LL = .5 inch (12.70 mm) min. and .750 inch (19.05 mm) max.



Стандарт Электрон Связь

Мы молодая и активно развивающаяся компания в области поставок электронных компонентов. Мы поставляем электронные компоненты отечественного и импортного производства напрямую от производителей и с крупнейших складов мира.

Благодаря сотрудничеству с мировыми поставщиками мы осуществляем комплексные и плановые поставки широчайшего спектра электронных компонентов.

Собственная эффективная логистика и склад в обеспечивает надежную поставку продукции в точно указанные сроки по всей России.

Мы осуществляем техническую поддержку нашим клиентам и предпродажную проверку качества продукции. На все поставляемые продукты мы предоставляем гарантию .

Осуществляем поставки продукции под контролем ВП МО РФ на предприятия военно-промышленного комплекса России , а также работаем в рамках 275 ФЗ с открытием отдельных счетов в уполномоченном банке. Система менеджмента качества компании соответствует требованиям ГОСТ ISO 9001.

Минимальные сроки поставки, гибкие цены, неограниченный ассортимент и индивидуальный подход к клиентам являются основой для выстраивания долгосрочного и эффективного сотрудничества с предприятиями радиоэлектронной промышленности, предприятиями ВПК и научно-исследовательскими институтами России.

С нами вы становитесь еще успешнее!

Наши контакты:

Телефон: +7 812 627 14 35

Электронная почта: sales@st-electron.ru

Адрес: 198099, Санкт-Петербург,
Промышленная ул, дом № 19, литера Н,
помещение 100-Н Офис 331