



ST is a global leader in the semiconductor market serving customers across the spectrum of sense and power and automotive products and embedded processing solutions. From energy management and savings to trust and data security, from healthcare and wellness to smart consumer devices, in the home, car and office, at work and at play, ST is found everywhere microelectronics make a positive and innovative contribution to people's life.

By getting more from technology  
to get more from life, ST stands for

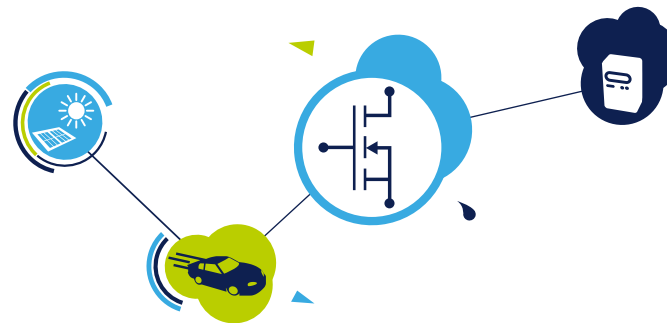
life.augmented



## Power MOSFET



### Selection guide



life.augmented

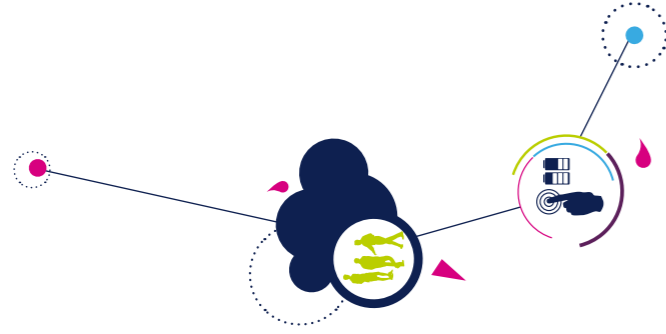


© STMicroelectronics - April 2016 - Printed in United Kingdom - All rights reserved  
The STMicroelectronics corporate logo is a registered trademark  
of the STMicroelectronics group of companies  
All other names are the property of their respective owners



# Content

N-channel STripFET 12 V to 30 V .....	2
N-channel STripFET >30 V to 350 V .....	4
N-channel >350 V to 700 V .....	18
N-channel >700 V .....	36
P-channel .....	43
N-channel fast recovery diode .....	46
Power MOSFETs: Nomenclature .....	49
Packages .....	50
Barcode of ST-MOSFET Finder .....	51



## N-channel STripFET 12 V to 30 V

Part Number	V <sub>DS</sub> (V)	R <sub>DS(on)</sub> (max) @ V <sub>GS</sub> 10 V (Ω)	R <sub>DS(on)</sub> (max) @ V <sub>GS</sub> 4.5 V or 5 V (Ω)	R <sub>DS(on)</sub> (max) @ 2.7 V (Ω)	Automotive Grade	I <sub>0(Com)</sub> (A)	Total Gate Charge (Qg) typ (nC)	Package
STR2N2VH5	20	-	0.035	0.055	-	6	6	SOT-23
STT5N2VH5	20	-	0.035	0.055	-	6	6	SOT23-6L
STS6NF20V	20	-	0.04	0.045	-	6	8.5	SO-8
STV300NH02L	24	0.0012	0.0015	-	-	120	109	PowerSO-10
STH300NH02L-6	24	0.0012	0.0015	-	Yes	180	109	PowerSO-6
STL220N3LLH7	30	0.0011	0.0015	-	-	220	46	PowerFLAT 5x6
STL160NS3LLH7	30	0.0021	0.0031	-	-	160	22	PowerFLAT 5x6
STB155N3H6	30	0.003	-	-	Yes	80	80	D <sup>2</sup> PAK
STD155N3H6	30	0.003	-	-	Yes	80	80	DPAK
STB155N3LH6	30	0.003	0.004	-	Yes	80	40	D <sup>2</sup> PAK
STD155N3LH6	30	0.003	0.004	-	Yes	80	40	DPAK
STP160N3LL	30	0.0032	0.0042	-	-	120	42	TO-220
STB100NF03L-03-1	30	0.0032	0.0045	-	-	30	160	PPAK
STB100NF03L-03T4	30	0.0032	0.0045	-	Yes	100	88	PPAK
STL110NS3LLH7	30	0.0034	0.005	-	-	120	13.7	PowerFLAT 5x6
STL23NS3LLH7	30	0.0037	0.005	-	-	23	13.7	PowerFLAT 3.3x3.3
STP105N3LL	30	0.0035	0.0045	-	-	80	42	TO-220
STB200NF03T4	30	0.0036	-	-	-	30	113	D <sup>2</sup> PAK
STL105NS3LLH7	30	0.0039	0.0055	-	-	27	13.7	PowerFLAT 5x6
STP80NF03L-04	30	0.004	0.0055	-	-	30	150	TO-220
STD96N3LLH6	30	0.0042	0.007	-	Yes	80	20	DPAK
STL90N3LLH6	30	0.0045	0.0073	-	-	90	17	PowerFLAT 5x6
STD86N3LH5	30	0.005	0.0065	-	Yes	80	14	DPAK
STD86N3LH5AG	30	0.005	0.0065	-	Yes	80	14	DPAK
STL86N3LLH6AG	30	0.0052	0.0076	-	Yes	80	17	PowerFLAT 5x6
STD100N3LF3	30	0.0055	0.01	-	Yes	80	20	DPAK
STL66N3LLH5	30	0.0058	0.0075	-	Yes	80	12	PowerFLAT 5x6
STL65DN3LLH5	30	0.0065	-	-	-	65	12	PowerFLAT 5x6 double island

## Barcode of ST-MOSFET Finder



For complete MOSFET product portfolio consult the APP ST-MOSFETFinder

## N-CHANNEL STRIPFET 12 V TO 30 V (CONT'D)

Part Number	V <sub>DSS</sub> (V)	R <sub>DS(on)</sub> (max) @ V <sub>GS</sub> 10 V (Ω)	R <sub>DS(on)</sub> (max) @ V <sub>GS</sub> 4.5 V or 5 V (Ω)	R <sub>DS(on)</sub> (max) @ 2.7 V (Ω)	Automotive Grade	I <sub>D(Cont)</sub> (A)	Total Gate Charge (Qg) typ (nC)	Package
STD65N3LLH5	30	0.0069	0.0093	-	-	65	8	DPAK
STL11N3LLH6	30	0.0075	0.0095	-	-	11	17	PowerFLAT 3.3x3.3
STL56N3LLH5	30	0.009	0.0112	-	-	56	6.5	PowerFLAT 5x6
STL58N3LLH5	30	0.009	0.0112	-	Yes	56	6.5	PowerFLAT 5x6
STI55NF03L	30	0.013	0.02	-	Yes	55	20	I <sup>2</sup> PAK
STL40DN3LLH5	30	0.018	0.025	-	Yes	11	4.5	PowerFLAT 5x6 double island
STL10N3LLH5	30	0.019	0.022	-	Yes	9	5	PowerFLAT 3.3x3.3
STP40NF03L	30	0.025	0.025	-	-	40	18	TO-220
STT6N3LLH6	30	0.025	0.036	-	-	6	3.6	SOT23-6L
STD30NF03LT4	30	0.025	0.035	-	-	30	31	DPAK
STD19N3LLH6AG	30	0.033	0.05	-	Yes	10	3.7	DPAK
STL19N3LLH6AG <sup>(*)</sup>	30	0.033	0.05	-	Yes	-	3.7	PowerFLAT 5x6
STN19N3LLH6AG <sup>(*)</sup>	30	0.033	0.05	-	Yes	-	3.7	SOT-223
STL6N3LLH6	30	0.035	0.06	-	-	6	3.6	PowerFLAT 2x2
STD17NF03LT4	30	0.05	0.06	-	-	30	9	DPAK
STD18NF03L	30	0.05	0.06	-	Yes	17	4.8	DPAK
STN4NF03L	30	0.05	0.06	-	-	4	6.5	SOT-223
STL66DN3LLH5	30	0.065	0.0079	-	Yes	20	12	PowerFLAT 5x6 double island
STP200N3LL <sup>(*)</sup>	30	0.0031	0.0024	-	-	120	40	TO-220
STD150NS3LLH7 <sup>(*)</sup>	30	0.0021	0.0031	-	-	160	22	DPAK
STD90NS3LLH7	30	0.0034	0.0053	-	-	80	13.7	DPAK

Note: \* Coming soon

## N-channel STripFET >30 V to 350 V

Part Number	V <sub>DSS</sub> (V)	R <sub>DS(on)</sub> (max) @ V <sub>GS</sub> 10 V (Ω)	R <sub>DS(on)</sub> (max) @ V <sub>GS</sub> 4.5 V or 5 V (Ω)	Automotive Grade	I <sub>D(Cont)</sub> (A)	Q <sub>g</sub> (typ) (nC)	Package
STP80NS04ZB	33	0.009	-	Yes	80	80	TO-220
STP70NS04ZC	33	0.011	-	Yes	80	58	TO-220
STP75NS04Z	33	0.011	-	-	80	50	TO-220
STD70NS04ZL	33	0.0125	0.0105	Yes	70	32	DPAK
STP62NS04Z	33	0.015	-	-	62	34	TO-220
STH410N4F7-2AG	40	0.0011	-	Yes	180	220	H <sup>2</sup> PAK-2
STH410N4F7-6AG	40	0.0011	-	Yes	180	220	H <sup>2</sup> PAK-6
STL285N4F7AG	40	0.0011	-	Yes	120	67	PowerFLAT 5x6
STL260N4LF7 <sup>(*)</sup>	40	0.0011	0.0014	-	120	63	PowerFLAT 5x6
STH400N4F6-2	40	0.00115	-	Yes	180	404	H <sup>2</sup> PAK-2
STH400N4F6-6	40	0.00115	-	Yes	180	404	H <sup>2</sup> PAK-6
STH360N4F6-2	40	0.00125	-	Yes	180	340	H <sup>2</sup> PAK-2
STH320N4F6-2	40	0.0013	-	Yes	200	240	H <sup>2</sup> PAK-2
STH320N4F6-6	40	0.0013	-	Yes	200	160	H <sup>2</sup> PAK-6
STV270N4F3	40	0.0015	-	Yes	270	110	PowerSO-10
STLD200N4F6AG	40	0.0015	-	Yes	120	172	PowerFLAT 5x6 dual side cooling
STI410N4F7AG	40	0.0015	-	Yes	180	220	TO-220
STP410N4F7AG	40	0.0015	-	Yes	180	220	TO-220
STH260N4LF7-2 <sup>(*)</sup>	40	0.0016	0.0019	-	180	63	H <sup>2</sup> PAK-2
STL210N4F7AG	40	0.0016	-	Yes	120	43	PowerFLAT 5x6
STH260N4LF7-6	40	0.0016	0.0019	-	-	60	H <sup>2</sup> PAK-6
STH270N4F3-2	40	0.0017	-	-	180	110	H <sup>2</sup> PAK-2
STH270N4F3-6	40	0.0017	-	Yes	180	110	H <sup>2</sup> PAK-6
STH290N4F6-6AG	40	0.0017	-	-	180	115	H <sup>2</sup> PAK-6
STH290N4F6-2AG	40	0.0017	-	-	180	115	H <sup>2</sup> PAK-2
STI400N4F6	40	0.0017	-	Yes	120	377	I <sup>2</sup> PAK
STP400N4F6	40	0.0017	-	Yes	120	377	TO-220

Note: \* Coming soon

## N-CHANNEL STRIPFET >30 V TO 350 V (CONT'D)

Part Number	V <sub>DSS</sub> (V)	R <sub>DS(on)</sub> (max) @ V <sub>GS</sub> 10 V (Ω)	R <sub>DS(on)</sub> (max) @ V <sub>GS</sub> 4.5 V or 5 V (Ω)	Automotive Grade	I <sub>D(Cont)</sub> (A)	Q <sub>g</sub> (typ) (nC)	Package
STI360N4F6	40	0.0018	-	Yes	120	340	I <sup>2</sup> PAK
STP360N4F6	40	0.0018	-	Yes	120	340	TO-220
STB270N4F3	40	0.002	-	Yes	160	110	D <sup>2</sup> PAK
STL190N4F7AG	40	0.002	-	Yes	120	41	PowerFLAT 5x6
STP260N4LF7	40	0.002	0.0023	-	110	63	TO-220
STF260N4F7(*)	40	0.0022	-	-	120	67	TO-220FP
STI300N4F6	40	0.0022	-	Yes	160	240	I <sup>2</sup> PAK
STFU260N4F7(*)	40	0.0022	-	-	120	67	TO-220FP ultra narrow leads
STL260N4F7(*)	40	0.0022	-	-	120	67	PowerFLAT 5x6
STP260N4F7(*)	40	0.0022	-	-	120	67	TO-220
STH175N4F6-2AG	40	0.0024	-	Yes	120	130	H <sup>2</sup> PAK-2
STH175N4F6-6AG	40	0.0024	-	Yes	120	130	H <sup>2</sup> PAK-6
STH180N4F6-2	40	0.0024	-	-	120	130	H <sup>2</sup> PAK-2
STL160N4F7	40	0.0025	-	-	120	29	PowerFLAT 5x6
STL140N4F7AG	40	0.0025	-	Yes	120	29	PowerFLAT 5x6
STI270N4F3	40	0.0026	-	Yes	160	110	I <sup>2</sup> PAK
STL140N4LLF5	40	0.0027	0.0031	-	140	45	PowerFLAT 5x6
STD175N4F6AG	40	0.0027	-	Yes	80	130	DPAK
STD180N4F6	40	0.0027	-	-	80	130	DPAK
STI175N4F6AG	40	0.0027	-	-	120	130	I <sup>2</sup> PAK
STP180N4F6	40	0.0027	-	-	120	130	TO-220
STD170N4F7AG	40	0.0028	-	Yes	-	-	DPAK
STH160N4LF6-2	40	0.0032	0.0046	-	160	180	H <sup>2</sup> PAK-2
STLD125N4F6AG	40	0.003	-	Yes	120	90	PowerFLAT 5x6 dual side cooling
STD134N4F7AG	40	0.0035	-	Yes	-	-	TO-220
STL120N4F6AG	40	0.0036	-	Yes	120	63	PowerFLAT 5x6
STD130N4F6AG	40	0.0036	-	Yes	80	7	DPAK
STL120N4LF6AG	40	0.0036	-	Yes	120	-	PowerFLAT 5x6

Note: \* Coming soon

## N-CHANNEL STRIPFET >30 V TO 350 V (CONT'D)

Part Number	V <sub>DSS</sub> (V)	R <sub>DS(on)</sub> (max) @ V <sub>GS</sub> 10 V (Ω)	R <sub>DS(on)</sub> (max) @ V <sub>GS</sub> 4.5 V or 5 V (Ω)	Automotive Grade	I <sub>D(Cont)</sub> (A)	Q <sub>g</sub> (typ) (nC)	Package
STB120N4F6	40	0.004	-	Yes	80	65	D <sup>2</sup> PAK
STB140N4F6	40	0.004	-	-	80	70	D <sup>2</sup> PAK
STB120N4LF6	40	0.004	0.005	Yes	80	80	D <sup>2</sup> PAK
STD120N4F6	40	0.004	-	Yes	80	65	DPAK
STD120N4LF6	40	0.004	0.005	Yes	80	80	DPAK
STP180NS04ZC	40	0.0042	-	Yes	120	110	TO-220
STP120N4F6	40	0.0043	-	Yes	80	65	TO-220
STP140N4F6	40	0.0043	-	-	80	70	TO-220
STL105DN4LF7AG	40	0.0045	0.008	Yes	-	-	PowerFLAT 5x6 double island
STL105N4LF7AG <sup>(*)</sup>	40	0.0045	0.008	-	105	13	PowerFLAT 5x6
STB100NF04T4	40	0.0046	-	-	120	110	D <sup>2</sup> PAK
STP100NF04	40	0.0046	-	Yes	120	110	TO-220
STB170NF04	40	0.005	-	Yes	80	117	D <sup>2</sup> PAK
STD95N4F3	40	0.0058	-	Yes	80	40	DPAK
STL76DN4LF7AG	40	0.006	0.0012	Yes	40	14	PowerFLAT 5x6 double island
STD95N4LF3	40	0.006	-	Yes	80	50	DPAK
STD80N4F6	40	0.006	-	Yes	80	36	DPAK
STP95N4F3	40	0.0062	-	Yes	80	40	TO-220
STB80N4F6AG	40	0.0063	-	Yes	80	36	D <sup>2</sup> PAK
STL70N4LLF5	40	0.0067	0.009	Yes	70	12.9	PowerFLAT 5x6
STP150NF04	40	0.007	-	Yes	80	118	TO-220
STD64N4F6AG	40	0.0082	-	Yes	54	44	DPAK
STL15DN4F5	40	0.009	-	Yes	15	25	PowerFLAT 5x6 double island
STD44N4LF6	40	0.0125	0.018	Yes	44	22	DPAK
STL52DN4LF7AG	40	0.016	0.02	Yes	18	12	PowerFLAT 5x6 double island
STD30NF04LT	40	0.03	0.05	Yes	30	17	DPAK
STL260N45LF7 <sup>(*)</sup>	45	0.00115	0.0015	-	120	55	PowerFLAT 5x6
STL200N45LF7	45	0.0018	0.0025	-	120	33	PowerFLAT 5x6

Note: \* Coming soon

## N-CHANNEL STRIPFET >30 V TO 350 V (CONT'D)

Part Number	V <sub>DSS</sub> (V)	R <sub>DS(on)</sub> (max) @ V <sub>GS</sub> 10 V (Ω)	R <sub>DS(on)</sub> (max) @ V <sub>GS</sub> 4.5 V or 5 V (Ω)	Automotive Grade	I <sub>D(Cont)</sub> (A)	Q <sub>g</sub> (typ) (nC)	Package
STP190N55LF3	55	0.0037	0.0045	Yes	120	60	TO-220
STP185N55F3	55	0.0038	-	Yes	120	110	TO-220
STP110N55F6	55	0.0052	-	-	110	126	TO-220
STB150NF55T4	55	0.006	-	Yes	120	140	D <sup>2</sup> PAK
STP150NF55	55	0.006	-	Yes	150	140	TO-220
STB80NF55-06-1	55	0.0065	-	Yes	80	140	I <sup>2</sup> PAK
STB80NF55-06T4	55	0.0065	-	-	80	140	D <sup>2</sup> PAK
STB80NF55L-06T4	55	0.0065	0.008	-	80	175	D <sup>2</sup> PAK
STP80NF55-06	55	0.0065	-	-	80	140	TO-220
STP80NF55-06FP	55	0.0065	-	-	80	140	TO-220FP
STP80NF55L-06	55	0.0065	0.008	-	80	175	TO-220
STP140NF55T4	55	0.008	-	-	80	142	D <sup>2</sup> PAK
STB141NF55	55	0.008	-	Yes	80	142	TO-220
STB78NF55-08	55	0.008	-	-	80	112	D <sup>2</sup> PAK
STB80NF55-08AG <sup>(*)</sup>	55	0.008	-	Yes	80	112	D <sup>2</sup> PAK
STB85NF55LT4	55	0.008	-	Yes	80	80	D <sup>2</sup> PAK
STB85NF55T4	55	0.008	0.01	Yes	80	120	D <sup>2</sup> PAK
STP140NF55	55	0.008	-	-	80	142	TO-220
STP141NF55	55	0.008	-	Yes	80	142	TO-220
STP80NF55-08AG <sup>(*)</sup>	55	0.008	-	Yes	80	112	TO-220
STP85NF55	55	0.008	-	Yes	80	120	TO-220
STP85NF55L	55	0.008	-	Yes	80	80	TO-220
STP90N55F4	55	0.008	-	-	80	90	TO-220
STD60N55F3	55	0.0085	-	-	65	33.5	DPAK
STD65N55LF3	55	0.0085	0.012	Yes	80	20	DPAK
STD60NF55LAT4	55	0.015	0.017	Yes	60	72	DPAK
STD60NF55LT4	55	0.015	0.017	-	60	72	DPAK
STL220N6F7	60	0.0014	-	-	260	100	PowerFLAT 5x6

Note: \* Coming soon

## N-CHANNEL STRIPFET >30 V TO 350 V (CONT'D)

Part Number	V <sub>DSS</sub> (V)	R <sub>DS(on)</sub> (max) @ V <sub>GS</sub> 10 V (Ω)	R <sub>DS(on)</sub> (max) @ V <sub>GS</sub> 4.5 V or 5 V (Ω)	Automotive Grade	I <sub>D(Cont)</sub> (A)	Q <sub>g</sub> (typ) (nC)	Package
STL225N6F7AG <sup>(*)</sup>	60	0.0014	-	Yes	260	100	PowerFLAT 5x6
STH272N6F7-6AG <sup>(*)</sup>	60	0.0015	-	Yes	180	170	H <sup>2</sup> PAK-6
STL220NS6F7 <sup>(*)</sup>	60	0.0016	-	-	-	100	PowerFLAT 5x6
STH220N6F7-2	60	0.0021	-	-	120	100	H <sup>2</sup> PAK-2
STH220N6F7-6	60	0.0021	-	-	120	100	H <sup>2</sup> PAK-6
STH265N6F6-2AG	60	0.0021	-	-	180	183	H <sup>2</sup> PAK-2
STH265N6F6-6AG	60	0.0021	-	-	180	183	H <sup>2</sup> PAK-6
STP220N6F7	60	0.0024	-	-	120	100	TO-220
STL140N6F7	60	0.0028	-	-	120	55	PowerFLAT 5x6
STW265N6F6AG	60	0.00285	-	Yes	180	183	TO-247
STH140N6F7-2	60	0.0032	-	-	80	55	H <sup>2</sup> PAK-2
STH140N6F7-6	60	0.0032	-	-	80	55	H <sup>2</sup> PAK-6
STF140N6F7	60	0.0035	-	-	80	55	TO-220FP
STF140N6F7	60	0.0035	-	-	80	55	I <sup>2</sup> PAKFP
STL130N6F7	60	0.0035	-	-	130	45	PowerFLAT 5x6
STD140N6F7	60	0.0038	-	-	80	55	DPAK
STP140N6F7	60	0.0038	-	-	80	40	TO-220
STD130N6F7	60	0.005	-	-	80	45	DPAK
STD80N6F6	60	0.005	-	Yes	80	147	DPAK
STP130N6F7	60	0.005	-	-	80	45	TO-220
STP80N6F6	60	0.005	-	Yes	80	147	TO-220
STB130N6F7	60	0.005	-	-	80	45	D <sup>2</sup> PAK
STL20N6F7	60	0.0054	-	-	20	30	PowerFLAT 3.3x3.3
STL90N6F7	60	0.0054	-	-	90	30	PowerFLAT 5x6
STF100N6F7	60	0.0056	-	-	46	30	TO-220FP
STP100N6F7	60	0.0056	-	-	100	30	TO-220
STB100N6F7	60	0.0056	-	-	100	30	D <sup>2</sup> PAK
STP90N6F6	60	0.0063	-	-	90	74.9	TO-220

Note: \* Coming soon



## N-CHANNEL STRIPFET >30 V TO 350 V (CONT'D)

Part Number	V <sub>DSS</sub> (V)	R <sub>DS(on)</sub> (max) @ V <sub>GS</sub> 10 V (Ω)	R <sub>DS(on)</sub> (max) @ V <sub>GS</sub> 4.5 V or 5 V (Ω)	Automotive Grade	I <sub>D(Cont)</sub> (A)	Q <sub>g</sub> (typ) (nC)	Package
STL16N6LF7 <sup>(*)</sup>	60	0.0064	0.0096	-	16	15	PowerFLAT 3.3x3.3
STL90N6LF7 <sup>(*)</sup>	60	0.0064	0.0096	-	90	15	PowerFLAT 5x6
STP77N6F6	60	0.007	-	-	77	70.5	TO-220
STD46N6F7	60	0.014	-	-	15	17	DPAK
STL50N6F7	60	0.014	-	-	50	17	PowerFLAT 5x6
STP60NF06L	60	0.014	0.016	-	60	35	TO-220
STP65NF06	60	0.014	-	-	60	54	TO-220
STB60NF06LT4	60	0.014	0.016	Yes	60	65	D <sup>2</sup> PAK
STL50DN6F7	60	0.014	-	-	50	17	PowerFLAT 5x6 double island
STL11N6F7	60	0.015	-	-	11	17	PowerFLAT 3.3x3.3
STB60NF06T4	60	0.016	0	-	60	49	D <sup>2</sup> PAK
STD60NF06T4	60	0.016	-	-	60	49	DPAK
STP60NF06	60	0.016	-	-	60	49	TO-220
STP60NF06FP	60	0.016	-	-	30	49	TO-220FP
STB55NF06LT4	60	0.017	0.02	-	35	25	D <sup>2</sup> PAK
STD35NF06LT4	60	0.017	-	Yes	35	25	DPAK
STB55NF06T4	60	0.018	-	-	50	44.5	D <sup>2</sup> PAK
STP55NF06	60	0.018	-	-	50	44.5	TO-220
STP55NF06L	60	0.018	0.02	-	55	27	TO-220
STS7NF60L	60	0.0195	0.0215	-	7.5	25	SO-8
STD35NF06T4	60	0.02	-	-	50	35	DPAK
STL7N6F7	60	0.023	-	-	7	8	PowerFLAT 2x2
STL8N6F7	60	0.023	-	-	8	8	PowerFLAT 3.3x3.3
STD35NF06T4	60	0.024	-	-	35	44.5	DPAK
STD30N6LF6AG	60	0.025	0.03	Yes	24	27.3	DPAK
STL36DN6F7	60	0.027	-	-	36	8	PowerFLAT 5x6 double island
STL8DN6LF6AG	60	0.027	0.031	Yes	9.6	27.3	PowerFLAT 5x6 double island
STL8N6LF6AG	60	0.027	0.031	Yes	9.6	27.3	PowerFLAT 5x6

Note: \* Coming soon

## N-CHANNEL STRIPFET >30 V TO 350 V (CONT'D)

Part Number	V <sub>DSS</sub> (V)	R <sub>DS(on)</sub> (max) @ V <sub>GS</sub> 10 V (Ω)	R <sub>DS(on)</sub> (max) @ V <sub>GS</sub> 4.5 V or 5 V (Ω)	Automotive Grade	I <sub>D(Cont)</sub> (A)	Q <sub>g</sub> (typ) (nC)	Package
STS8DN6LF6AG	60	0.027	0.031	Yes	9.6	27.3	SO-8
STS8N6LF6AG	60	0.027	0.031	Yes	9.6	27.3	SO-8
STB45NF06T4	60	0.028	-	-	38	0	D <sup>2</sup> PAK
STD29NF06L	60	0.028	0.03	-	28	0	DPAK
STD30NF06LAG	60	0.028	0.03	-	28	0	DPAK
STF40NF06	60	0.028	-	Yes	23	32	TO-220FP
STP45NF06	60	0.028	-	-	38	32	TO-220
STL8DN6LF3	60	0.03	0.044	Yes	7.8	13	PowerFLAT 5x6 double island
STL8N6LF3	60	0.03	0.044	Yes	7.8	13	PowerFLAT 5x6
STL20DNF06LAG	60	0.04	0.05	Yes	20	22.5	PowerFLAT 5x6 double island
STD19NF06L	60	0.04	0.048	-	-	-	DPAK
STD20NF06	60	0.04	-	-	23	20	DPAK
STD20NF06LAG <sup>(*)</sup>	60	0.04	0.048	Yes	-	12	DPAK
STD22NF06AG	60	0.04	-	Yes	23	20	DPAK
STL20NF06LAG <sup>(*)</sup>	60	0.04	0.05	Yes	20	22.5	PowerFLAT 5x6
STP36NF06L	60	0.04	0.05	Yes	30	12	TO-220
STL7DN6LF3	60	0.043	0.06	Yes	6.5	8.7	PowerFLAT 5x6 double island
STL7N6LF3	60	0.043	0.06	Yes	6.5	8.8	PowerFLAT 5x6
STS5DNF60L	60	0.045	0.065	Yes	4	15	SO-8
STS4DNF60L	60	0.055	0.065	-	4	32	SO-8
STS5NF60L	60	0.055	0.065	Yes	5	17	SO-8
STB25NF06AG	60	0.07	-	Yes	16	14	D <sup>2</sup> PAK
STB25NF06LAG <sup>(*)</sup>	60	0.07	0.085	Yes	25	14	D <sup>2</sup> PAK
STD16NF06LT4	60	0.07	0.085	-	24	14	DPAK
STD16NF06T4	60	0.07	-	-	16	14	DPAK
STP16NF06L	60	0.09	-	-	16	7.3	TO-220
STD11NF06L <sup>(*)</sup>	60	0.1	0.12	-	12	7.5	DPAK
STD12NF06LAG <sup>(*)</sup>	60	0.1	0.12	Yes	12	7.5	DPAK

Note: \* Coming soon

## N-CHANNEL STRIPFET >30 V TO 350 V (CONT'D)

Part Number	V <sub>DSS</sub> (V)	R <sub>DS(on)</sub> (max) @ V <sub>GS</sub> 10 V (Ω)	R <sub>DS(on)</sub> (max) @ V <sub>GS</sub> 4.5 V or 5 V (Ω)	Automotive Grade	I <sub>D(Cont)</sub> (A)	Q <sub>g</sub> (typ) (nC)	Package
STD12NF06T4	60	0.1	-	-	12	10	DDPAK
STN3NF06	60	0.1	-	-	3	10	SOT-223
STN3NF06L	60	0.1	0.12	-	3	12	SOT-223
STN4NF06L	60	0.1	0.12	Yes	4	7	SOT-223
STP80N70F6	68	0.008	-	-	96	100	TO-220
STP110N7F6	68	0.0065	-	-	110	100	TO-220
STP80N70F4	68	0.0098	0	-	85	76	TO-220
STH110N7F6-2	68	0.0063	-	-	110	100	H <sup>2</sup> PAK-2
STH240N75F3-2	75	0.003	-	-	180	87	H <sup>2</sup> PAK-2
STH245N75F3-6	75	0.003	-	Yes	180	87	H <sup>2</sup> PAK-6
STP160N75F3	75	0.004	-	-	120	85	TO-220
STP140NF75	75	0.0075	-	-	120	160	TO-220
STP75NF75FP	75	0.011	-	-	40	117	TO-220FP
STP76NF75	75	0.011	-	Yes	80	117	TO-220
STP75NF75	75	0.013	-	-	75	110	TO-220
STB160N75F3	75	0.0037	-	-	120	85	D <sup>2</sup> PAK
STB140NF75T4	75	0.0075	-	-	120	160	D <sup>2</sup> PAK
STB75NF75LT4	75	0.011	0.013	-	75	150	D <sup>2</sup> PAK
STB75NF75T4	75	0.011	-	-	80	117	D <sup>2</sup> PAK
STD45NF75T4	75	0.024	-	Yes	30	60	DDPAK
STB76NF75	75	0.011	-	Yes	80	117	D <sup>2</sup> PAK
STH245N75F3-6	75	0.03	0	-	180	87	H <sup>2</sup> PAK-6
STH270N8F7-2	80	0.0021	-	-	180	193	H <sup>2</sup> PAK-2
STH270N8F7-6	80	0.0021	-	-	180	193	H <sup>2</sup> PAK-6
STH275N8F7-2AG	80	0.0021	-	Yes	180	193	H <sup>2</sup> PAK-2
STH275N8F7-6AG	80	0.0021	-	Yes	180	193	H <sup>2</sup> PAK-6
STP270N8F7	80	0.0025	-	-	180	193	TO-220
STL130N8F7	80	0.0036	-	-	24	96	PowerFLAT 5x6

Note: \* Coming soon

## N-CHANNEL STRIPFET >30 V TO 350 V (CONT'D)

Part Number	V <sub>DSS</sub> (V)	R <sub>DS(on)</sub> (max) @ V <sub>GS</sub> 10 V (Ω)	R <sub>DS(on)</sub> (max) @ V <sub>GS</sub> 4.5 V or 5 V (Ω)	Automotive Grade	I <sub>D(Cont)</sub> (A)	Q <sub>g</sub> (typ) (nC)	Package
STL135N8F7AG	80	0.0036	-	Yes	130	96	PowerFLAT 5x6
STLD130N8F7(*)	80	0.0036	-	-	0	96	PowerFLAT 5x6
STH170N8F7-2	80	0.0037	-	-	120	120	H <sup>2</sup> PAK-2
STP170N8F7	80	0.0039	-	-	120	120	TO-220
STH140N8F7-2	80	0.004	-	-	90	96	H <sup>2</sup> PAK-2
STH145N8F7-2AG	80	0.004	-	Yes	90	96	H <sup>2</sup> PAK-2
STF140N8F7	80	0.0043	-	-	64	96	TO-220FP
STP140N8F7	80	0.0043	-	-	90	96	TO-220
STL120N8F7	80	0.0044	-	-	120	60	PowerFLAT 5x6
STH130N8F7-2	80	0.005	0	-	110	60	H <sup>2</sup> PAK-2
STP130N8F7	80	0.0058	0	-	80	60	TO-220
STL100N8F7	80	0.0061	-	-	100	47	PowerFLAT 5x6
STD110N8F6	80	0.0065	-	-	110	150	DPAK
STP110N8F6	80	0.0065	-	-	110	150	TO-220
STL100N8F7	80	0.007	-	-	110	47	PowerFLAT 5x6
STL75N8LF6	80	0.0074	0.0082	-	18	51	PowerFLAT 5x6
STP110N8F7	80	0.0075	-	-	80	47	TO-220
STP100N8F6	80	0.009	-	-	100	90	TO-220
STH310N10F7-2	100	0.0023	-	-	180	180	H <sup>2</sup> PAK-2
STH310N10F7-6	100	0.0023	-	-	180	180	H <sup>2</sup> PAK-6
STH315N10F7-2	100	0.0023	-	Yes	180	180	H <sup>2</sup> PAK-2
STH315N10F7-6	100	0.0023	-	Yes	180	180	H <sup>2</sup> PAK-6
STH240N10F7-2	100	0.0025	-	-	180	160	H <sup>2</sup> PAK-2
STH240N10F7-6	100	0.0025	-	-	180	160	H <sup>2</sup> PAK-6
STP310N10F7	100	0.0027	-	-	180	180	TO-220
STP315N10F7	100	0.0027	-	Yes	180	180	TO-220
STP240N10F7	100	0.0032	-	-	110	160	TO-220
STF150N10F7	100	0.0042	-	-	65	117	TO-220FP

Note: \* Coming soon

## N-CHANNEL STRIPFET >30 V TO 350 V (CONT'D)

Part Number	V <sub>DSS</sub> (V)	R <sub>DS(on)</sub> (max) @ V <sub>GS</sub> 10 V (Ω)	R <sub>DS(on)</sub> (max) @ V <sub>GS</sub> 4.5 V or 5 V (Ω)	Automotive Grade	I <sub>D(Cont)</sub> (A)	Q <sub>g</sub> (typ) (nC)	Package
STI150N10F7	100	0.0042	-	-	110	117	I <sup>2</sup> PAK
STP150N10F7	100	0.0042	-	-	110	117	TO-220
STH180N10F3-2	100	0.0045	-	-	180	114.6	H <sup>2</sup> PAK-2
STH185N10F3-2	100	0.0045	-	Yes	180	114.6	H <sup>2</sup> PAK-2
STH150N10F7-2	100	0.0045	-	-	90	92	H <sup>2</sup> PAK-2
STP180N10F3	100	0.0051	-	-	120	115	TO-220
STP165N10F4	100	0.0055	-	-	120	180	TO-220
STL110N10F7	100	0.006	-	-	100	72	PowerFLAT 5x6
STLD110N10F7(*)	100	0.006	-	-	100	72	PowerFLAT 5x6 dual side cooling
STH110N10F7-2(*)	100	0.0065	-	-	110	72	H <sup>2</sup> PAK-2
STH110N10F7-6	100	0.0065	-	-	110	72	H <sup>2</sup> PAK-6
STF110N10F7	100	0.007	-	-	45	72	TO-220FP
STP110N10F7	100	0.007	-	-	110	72	TO-220
STL100N10F7	100	0.0073	-	-	19	61	PowerFLAT 5x6
STL90N10F7	100	0.008	-	-	70	45	PowerFLAT 5x6
STD100N10F7	100	0.008	-	-	80	61	DPAK
STD105N10F7AG	100	0.008	-	Yes	80	61	DPAK
STF100N10F7	100	0.008	-	-	45	61	TO-220FP
STP100N10F7	100	0.008	-	-	80	61	TO-220
STB100N10F7	100	0.008	-	-	80	61	D <sup>2</sup> PAK
STH80N10F7-2	100	0.0095	-	-	80	45	H <sup>2</sup> PAK-2
STF130N10F3	100	0.0096	-	-	46	57	I <sup>2</sup> PAKFP
STD80N10F7	100	0.01	-	-	70	45	DPAK
STD85N10F7AG	100	0.01	-	-	80	45	DPAK
STF80N10F7	100	0.01	-	-	40	45	TO-220FP
STP80N10F7	100	0.01	-	-	80	45	TO-220
STH80N10LF7-2AG	100	0.01	0.016	Yes	-	-	H <sup>2</sup> PAK-2
STL80N10LF7AG	100	0.01	0.016	Yes	-	-	PowerFLAT 5x6

Note: \* Coming soon

## N-CHANNEL STRIPFET >30 V TO 350 V (CONT'D)

Part Number	V <sub>DSS</sub> (V)	R <sub>DS(on)</sub> (max) @ V <sub>GS</sub> 10 V (Ω)	R <sub>DS(on)</sub> (max) @ V <sub>GS</sub> 4.5 V or 5 V (Ω)	Automotive Grade	I <sub>D(Cont)</sub> (A)	Q <sub>g</sub> (typ) (nC)	Package
STB120NF10T4	100	0.0105	0	-	120	172	D <sup>2</sup> PAK
STP80NF10	100	0.014	-	-	80	140	TO-220
STP80NF10FP	100	0.015	-	-	38	140	TO-220FP
STB80NF10T4	100	0.015	-	-	80	135	D <sup>2</sup> PAK
STD45N10F7	100	0.016	-	-	45	22	DPAK
STD47N10F7AG	100	0.016	-	Yes	45	25	DPAK
STI45N10F7	100	0.016	-	-	45	22	I <sup>2</sup> PAK
STP45N10F7	100	0.016	-	-	45	22	TO-220
STL60N10F7	100	0.0165	-	-	12	25	PowerFLAT 5x6
STF45N10F7	100	0.018	-	-	30	25	TO-220FP
STW70N10F4	100	0.0195	-	-	65	85	TO-247
STH52N10LF3-2AG	100	0.02	0.026	Yes	52	18.5	H <sup>2</sup> PAK-2
STL8N10F7	100	0.02	-	-	35	25	PowerFLAT 3.3x3.3
STP60NF10	100	0.023	-	-	80	104	TO-220
STB60NF10	100	0.023	-	-	80	104	D <sup>2</sup> PAK
STD30N10F7	100	0.024	-	-	35	19	DPAK
STF30N10F7	100	0.024	-	-	35	19	TO-220FP
STL40N10F7	100	0.024	-	-	10	14	PowerFLAT 5x6
STP30N10F7	100	0.024	-	-	35	18	TO-220
STD40NF10	100	0.028	-	-	50	46.5	DPAK
STP40NF10	100	0.028	-	-	50	60	TO-220
STP40NF10L	100	0.033	0.036	-	40	0	TO-220
STB40NF10LT4	100	0.033	0.036	-	40	0	D <sup>2</sup> PAK
STL8N10LF3	100	0.035	0.05	Yes	7.8	20.5	PowerFLAT 5x6
STD25N10F7	100	0.035	-	-	25	13	DPAK
STF25N10F7	100	0.035	-	-	25	13	TO-220FP
STL30N10F7	100	0.035	-	-	8	14	PowerFLAT 5x6
STL7N10F7	100	0.035	-	-	7	14	PowerFLAT 3.3x3.3
STP25N10F7	100	0.035	-	-	25	13	TO-220

## N-CHANNEL STRIPFET >30 V TO 350 V (CONT'D)

Part Number	V <sub>DSS</sub> (V)	R <sub>DS(on)</sub> (max) @ V <sub>GS</sub> 10 V (Ω)	R <sub>DS(on)</sub> (max) @ V <sub>GS</sub> 4.5 V or 5 V (Ω)	Automotive Grade	I <sub>D(Cont)</sub> (A)	Q <sub>g</sub> (typ) (nC)	Package
STU25N10F7	100	0.035	-	-	25	10	IPAK
STD25NF10LA	100	0.035	0.04	Yes	25	38	DPAK
STD25NF10LT4	100	0.035	0.04	-	25	0	DPAK
STL8DN10LF3	100	0.035	0.05	Yes	7.8	20.5	PowerFLAT 5x6 double island
STD25NF10T4	100	0.038	0	-	25	55	DPAK
STD26NF10T4	100	0.038	-	Yes	25	55	DPAK
STD20NF10	100	0.045	-	-	30	40	DPAK
STB30NF10T4	100	0.045	0	-	35	40	D <sup>2</sup> PAK
STP30NF10	100	0.052	-	-	30	40	TO-220
STP24NF10	100	0.06	-	-	26	30	TO-220
STD15NF10T4	100	0.065	-	-	23	30	DPAK
STL3N10F7	100	0.07	-	-	4	7.8	PowerFLAT 2x2
STL4N10F7	100	0.07	-	-	4.5	7.8	PowerFLAT 3.3x3.3
STL20DN10F7	100	0.08	-	-	5	9	PowerFLAT 5x6 double island
STL92N10F7AG	100	0.085	-	Yes	70	45	PowerFLAT 5x6
STD100N10LF7AG	100	0.089	0.0112	Yes	-	-	DPAK
STD10NF10T4	100	0.13	0	-	13	15	DPAK
STD6NF10T4	100	0.25	0	-	6	10	DPAK
STU6NF10	100	0.25	-	-	6	10	IPAK
STD6NF10	100	0.25	-	-	6	12	DPAK
STN2NF10	100	0.26	-	-	2.4	10	SOT-223
STN1NF10	100	0.8	-	-	1	4	SOT-223
STI100N10F7	100	80	-	-	80	60	I <sup>2</sup> PAK
STL80N12F7 <sup>(*)</sup>	120	0.0016	-	-	-	35	PowerFLAT 5x6
STF200N12F7 <sup>(*)</sup>	120	0.0043	-	-	-	110	TO-220FP
STP200N12F7 <sup>(*)</sup>	120	0.0043	-	-	-	110	TO-220
STH200N12F7-2 <sup>(*)</sup>	120	0.0046	-	-	-	110	H <sup>2</sup> PAK-2
STL100N12F7 <sup>(*)</sup>	120	0.0075	-	-	-	50	PowerFLAT 5x6

Note: \* Coming soon

## N-CHANNEL STRIPFET >30 V TO 350 V (CONT'D)

Part Number	V <sub>DSS</sub> (V)	R <sub>DS(on)</sub> (max) @ V <sub>GS</sub> 10 V (Ω)	R <sub>DS(on)</sub> (max) @ V <sub>GS</sub> 4.5 V or 5 V (Ω)	Automotive Grade	I <sub>D(Cont)</sub> (A)	Q <sub>g</sub> (typ) (nC)	Package
STH100N12F7-6 <sup>(*)</sup>	120	0.008	-	-	-	50	H <sup>2</sup> PAK-6
STH100N12F7-2 <sup>(*)</sup>	120	0.008	-	-	-	50	H <sup>2</sup> PAK-2
STF100N12F7 <sup>(*)</sup>	120	0.0085	-	-	-	50	TO-220FP
STP100N12F7 <sup>(*)</sup>	120	0.0085	-	-	-	50	TO-220
STP80NF12	120	0.018	-	-	80	140	TO-220
STP40NF12	120	0.032	-	-	40	60	TO-220
STH180N15F7-2 <sup>(*)</sup>	150	0.0053	-	-	-	125	H <sup>2</sup> PAK-2
STP110N15F7 <sup>(*)</sup>	150	0.0056	-	-	-	125	TO-220
STP180N15F7 <sup>(*)</sup>	150	0.0056	-	-	-	125	TO-220
STH110N15F7-2 <sup>(*)</sup>	150	0.0107	-	-	-	70	H <sup>2</sup> PAK-2
STL80N15F7 <sup>(*)</sup>	150	0.0135	-	-	-	53	PowerFLAT 5x6
STH90N15F7-2 <sup>(*)</sup>	150	0.0142	-	-	-	53	H <sup>2</sup> PAK-2
STF90N15F7 <sup>(*)</sup>	150	0.0145	-	-	-	53	TO-220
STP90N15F7 <sup>(*)</sup>	150	0.0145	-	-	-	53	TO-220
STS5N15F4	150	0.063	-	-	5	48	SO-8
STD5N20LT4	200	-	0.7	-	5	0	DPAK
STP75NF20	200	0.034	-	-	75	84	TO-220
STW75NF20	200	0.034	-	-	75	84	TO-247
STF40NF20	200	0.045	-	-	40	75	TO-220FP
STP40NF20	200	0.045	-	-	40	75	TO-220
STW40NF20	200	0.045	-	-	40	75	TO-247
STP30NF20	200	0.075	-	-	30	38	TO-220
STD20NF20	200	0.125	-	-	18	28	DPAK
STD25NF20	200	0.125	-	Yes	18	28	DPAK
STF20NF20	200	0.125	-	-	18	28	TO-220FP
STP20NF20	200	0.125	-	-	18	28	TO-220
STF19NF20	200	0.16	-	-	11	24	TO-220FP
STP19NF20	200	0.16	-	-	11	24	TO-220

Note: \* Coming soon



## N-CHANNEL STripFET >30 V TO 350 V (CONT'D)

Part Number	V <sub>DSS</sub> (V)	R <sub>DS(on)</sub> (max) @ V <sub>GS</sub> 10 V (Ω)	R <sub>DS(on)</sub> (max) @ V <sub>GS</sub> 4.5 V or 5 V (Ω)	Automotive Grade	I <sub>D(Cont)</sub> (A)	Q <sub>g</sub> (typ) (nC)	Package
STN1NF20	200	1.5	-	-	1	5.7	SOT-223
STN4NF20L	200	1.5	-	-	1	0.9	SOT-223
STB80N20M5	200	0.023	-	-	61	104	D <sup>2</sup> PAK
STB75NF20	200	0.034	-	-	75	84	D <sup>2</sup> PAK
STB40NF20	200	0.045	-	-	40	75	D <sup>2</sup> PAK
STB30NF20	200	0.075	-	-	30	38	D <sup>2</sup> PAK
STB30NF20L	200	0.075	-	Yes	30	65	D <sup>2</sup> PAK
STP50NF25	250	0.069	-	-	45	68	TO-220
STB18NF25	250	0.165	-	Yes	17	29.5	D <sup>2</sup> PAK
STD17NF25	250	0.165	-	-	17	30	DPAK
STD18NF25	250	0.165	-	Yes	17	29.5	DPAK
STF17NF25	250	0.165	-	-	17	29.5	TO-220FP
STP17NF25	250	0.165	-	-	17	29.5	TO-220
STD16NF25	250	0.235	-	-	14	18	DPAK
STF16NF25	250	0.235	-	-	14	18	TO-220FP
STD8NF25	250	0.42	-	Yes	8	16	DPAK
STU7NF25	250	0.42	-	-	8	16	IPAK
STB46N30M5	300	0.04	-	Yes	53	95	D <sup>2</sup> PAK
STW75NF30	300	0.045	-	Yes	60	164	TO-247
STB46NF30	300	0.075	-	Yes	45	84	D <sup>2</sup> PAK
STP46NF30	300	0.075	-	Yes	45	84	TO-220
STW46NF30	300	0.075	-	Yes	45	84	TO-247
STD10NF30	300	0.33	-	Yes	10	23	DPAK
STB18NF30	330	0.18	-	Yes	18	44	D <sup>2</sup> PAK

## N-channel >350 V to 700 V

Part Number	V <sub>DSS</sub> (V)	R <sub>DS(on)</sub> (max) @ V <sub>GS</sub> 10 V (Ω)	Automotive Grade	I <sub>D(Cont)</sub> (A)	Q <sub>g</sub> (typ) (nC)	Package
STB46N30M5	300	0.04	Yes	53	95	D <sup>2</sup> PAK
STB46NF30	300	0.075	Yes	45	85	D <sup>2</sup> PAK
STP46NF30	300	0.075	Yes	45	85	TO-220
STB46NF30	300	0.075	Yes	45	85	D <sup>2</sup> PAK
STW46NF30	300	0.075	Yes	45	85	TO-247
STB18NF30	300	0.18	-	18	44	D <sup>2</sup> PAK
STD10NF30	300	0.33	Yes	10	23	DPAK
STW75NF30AG <sup>(*)</sup>	300	0.045	Yes	60	180	TO-247
STW74NF30 <sup>(*)</sup>	300	0.045	Yes	60	180	TO-247
STB45N40DM2AG <sup>(1)</sup>	400	0.072	Yes	38	56	D <sup>2</sup> PAK
STP45N40DM2AG <sup>(1)</sup>	400	0.072	Yes	38	56	TO-220
STD7NK40ZT4	400	1	-	6	20	DPAK
STD5NK40ZT4	400	1.8	-	4	12	DPAK
STD5NK40Z-1	400	1.8	-	4	12	IPAK
STD3N40K3	400	3.4	-	2	11	DPAK
STN3N40K3	400	3.4	-	1.8	11	SOT-223
STL3NK40	400	5.5	-	0.43	8.7	PowerFLAT 5X5 HV
STN3N45K3	450	3.8	-	0.6	6	SOT-223
STU3N45K3	450	3.8	-	1.8	6	IPAK
STY105NM50N	500	0.022	-	110	326	Max247
STE53NC50	500	0.08	-	53	310	ISOTOP
STB45N50DM2AG <sup>(1)</sup>	500	0.084	Yes	34	57	D <sup>2</sup> PAK
STB34N50DM2AG <sup>(1)</sup>	500	0.12	Yes	26	44	D <sup>2</sup> PAK
STB23NM50N	500	0.19	-	17	45	D <sup>2</sup> PAK
STF23NM50N	500	0.19	-	17	45	TO-220FP
STW23NM50N	500	0.19	-	17	45	TO-247
STP23NM50N	500	0.19	-	17	45	TO-220

Note: (\*) coming soon, (1) Fast recovery diode devices

## N-CHANNEL >350 V TO 700 V (CONT'D)

Part Number	V <sub>DSS</sub> (V)	R <sub>DS(on)</sub> (max) @ V <sub>GS</sub> 10 V (Ω)	Automotive Grade	I <sub>D(Cont)</sub> (A)	Q <sub>g</sub> (typ) (nC)	Package
STP19NM50N	500	0.25	-	14	34	TO-220
STF19NM50N	500	0.25	-	14	34	TO-220FP
STB21NK50Z	500	0.27	Yes	17	85	D <sup>2</sup> PAK
STD16N50M2	500	0.28	-	13	19.5	DPAK
STF16N50M2	500	0.28	-	13	19.5	TO-220FP
STP16N50M2	500	0.28	-	13	19.5	TO-220
STD13NM50N	500	0.32	-	12	27	DPAK
STD12N50DM2 <sup>(1)</sup>	500	0.35	-	11	16	DPAK
STF12N50DM2 <sup>(1)</sup>	500	0.35	-	11	16	TO-220FP
STD12N50M2	500	0.38	-	10	15	DPAK
STF12N50M2	500	0.38	-	10	15	TO-220FP
STP12N50M2	500	0.38	-	10	15	TO-220
STD11N50DM2 <sup>(1)</sup>	500	0.53	-	8	12	DPAK
STD11N50M2	500	0.53	-	8	12	DPAK
STF11N50M2	500	0.53	-	8	12	TO-220FP
STD8NM50N	500	0.79	-	5	14	DPAK
STD9NM50N	500	0.79	Yes	5	14	DPAK
STF8NM50N	500	0.79	-	5	14	TO-220FP
STP8NM50N	500	0.79	-	5	14	TO-220
STD14NM50NAG <sup>(*)</sup>	500	0.32	Yes	12	27	DPAK
STD15N50M2AG <sup>(*)</sup>	500	0.38	Yes	10	15	DPAK
STD11N50DM2 <sup>(*)</sup> (1)	500	0.53	-	8	8	DPAK
STD5N52U	525	0.06	-	4.4	16.9	DPAK
STD7N52K3	525	0.85	-	6	33	DPAK
STD6N52K3	525	1.2	-	5	-	DPAK
STD5N52K3	525	1.5	-	4.4	17	DPAK
STU5N52K3	525	1.5	-	4.4	17	IPAK
STD5N52U <sup>(1)</sup>	525	1.5	-	4.4	17	DPAK

Note: (\*) coming soon, (1) Fast recovery diode devices

## N-CHANNEL >350 V TO 700 V (CONT'D)

Part Number	V <sub>DSS</sub> (V)	R <sub>DS(on)</sub> (max) @ V <sub>GS</sub> 10 V (Ω)	Automotive Grade	I <sub>D(Cont)</sub> (A)	Q <sub>g</sub> (typ) (nC)	Package
STD4N52K3	525	2.6	-	2.5	11	DPAK
STP36N55M5	550	0.08	-	33	72	TO-220
STL36N55M5	550	0.09	-	22.5	67	PowerFLAT 8x8 HV
STD18N55M5	550	0.192	-	16	31	DPAK
STY100NM60N	600	0.029	-	98	330	Max247
STW75N60M6 <sup>(*)</sup>	600	0.035	-	-	-	TO-247
STWA75N60M6 <sup>(*)</sup>	600	0.035	-	-	-	TO-247 long leads
STW75N60M6-4 <sup>(*)</sup>	600	0.035	-	-	-	TO247-4
STW70N60M2	600	0.04	-	68	130	TO-247
STW68N60M6-4 <sup>(*)</sup>	600	0.041	-	-	-	TO247-4
STW68N60M6 <sup>(*)</sup>	600	0.041	-	-	-	TO-247
STWA68N60M6 <sup>(*)</sup>	600	0.041	-	-	-	TO-247 long leads
STW72N60DM2AG <sup>(1)</sup>	600	0.042	Yes	66	121	TO-247
STW70N60DM2 <sup>(1)</sup>	600	0.042	-	68	121	TO-247
STW56N60M2	600	0.055	-	52	91	TO-247
STW56N60M2-4	600	0.055	-	52	91	TO247-4
STWA58N60DM2AG <sup>(*)</sup> (1)	600	0.06	Yes	50	110	TO-247 long leads
STW58N60DM2AG <sup>(1)</sup>	600	0.06	Yes	50	90	TO-247
STW56N60DM2 <sup>(1)</sup>	600	0.06	-	50	110	TO-247
STW58N60DM2AG <sup>(1)</sup>	600	0.06	Yes	50	110	TO-247
STW48N60M6 <sup>(*)</sup>	600	0.069	-	-	-	TO-247
STW48N60M6-4 <sup>(*)</sup>	600	0.069	-	-	-	TO247-4
STWA48N60M6 <sup>(*)</sup>	600	0.069	-	-	-	TO-247 long leads
STW48N60M2	600	0.07	-	42	70	TO-247
STW48N60M2-4	600	0.07	-	42	70	TO247-4
STWA48N60M2	600	0.07	-	42	70	TO-247 long leads
STB42N60M2-EP	600	0.087	-	34	55	D <sup>2</sup> PAK
STF42N60M2-EP	600	0.087	-	34	55	TO-220FP

Note: (\*) coming soon, (1) Fast recovery diode devices

## N-CHANNEL >350 V TO 700 V (CONT'D)

Part Number	V <sub>DSS</sub> (V)	R <sub>DS(on)</sub> (max) @ V <sub>GS</sub> 10 V (Ω)	Automotive Grade	I <sub>D(Cont)</sub> (A)	Q <sub>g</sub> (typ) (nC)	Package
STFW42N60M2-EP	600	0.087	-	34	55	TO-3PF
STP42N60M2-EP	600	0.087	-	34	55	TO-220
STW42N60M2-EP	600	0.087	-	34	55	TO-247
STB40N60M2	600	0.088	-	34	57	D <sup>2</sup> PAK
STF40N60M2	600	0.088	-	34	57	TO-220FP
STF40N60M2	600	0.088	-	34	57	I <sup>2</sup> PAKFP
STFW40N60M2	600	0.088	-	34	57	TO-3PF
STP40N60M2	600	0.088	-	34	57	TO-220
STW40N60M2	600	0.088	-	34	57	TO-247
STW40N60M2-4	600	0.088	-	34	57	TO247-4
STWA40N60M2	600	0.088	-	34	57	TO-247 long leads
STW47NM60ND	600	0.088	Yes	35	120	TO-247
STWA45N60DM2AG <sup>(*)</sup>	600	0.093	Yes	34	56	TO-247 long leads
STB45N60DM2AG <sup>(1)</sup>	600	0.093	Yes	34	56	D <sup>2</sup> PAK
STB43N60DM2 <sup>(1)</sup>	600	0.093	-	34	56	D <sup>2</sup> PAK
STP45N60DM2AG <sup>(1)</sup>	600	0.093	Yes	34	56	TO-220
STW45N60DM2AG <sup>(1)</sup>	600	0.093	Yes	34	56	TO-247
STF43N60DM2 <sup>(1)</sup>	600	0.093	-	34	56	TO-220FP
STP43N60DM2 <sup>(1)</sup>	600	0.093	-	34	56	TO-220
STW43N60DM2 <sup>(1)</sup>	600	0.093	-	34	56	TO-247
STB36N60M6 <sup>(*)</sup>	600	0.099	-	30	48	D <sup>2</sup> PAK
STW36N60M6-4 <sup>(*)</sup>	600	0.099	-	30	48	TO247-4
STW36N60M6 <sup>(*)</sup>	600	0.099	-	30	48	TO-247
STF36N60M6	600	0.099	-	30	48	TO-220FP
STP36N60M6 <sup>(*)</sup>	600	0.099	-	30	48	TO-220
STL45N60DM6 <sup>(*)</sup>	600	0.1	-	26	50	PowerFLAT 8x8 HV
STB34NM60N	600	0.105	-	29	85	D <sup>2</sup> PAK
STB36NM60N	600	0.105	Yes	29	83.6	D <sup>2</sup> PAK

Note: (\*) coming soon, (1) Fast recovery diode devices

## N-CHANNEL >350 V TO 700 V (CONT'D)

Part Number	V <sub>DSS</sub> (V)	R <sub>DS(on)</sub> (max) @ V <sub>GS</sub> 10 V (Ω)	Automotive Grade	I <sub>D(Cont)</sub> (A)	Q <sub>3</sub> (typ) (nC)	Package
STP34NM60N	600	0.105	-	31.5	84	TO-220
STW34NM60N	600	0.105	-	31.5	84	TO-247
STW36NM60N	600	0.105	Yes	29	85	TO-247
STB34NM60ND <sup>(1)</sup>	600	0.11	-	29	80.4	D <sup>2</sup> PAK
STF34NM60ND <sup>(1)</sup>	600	0.11	-	29	80.4	TO-220FP
STP34NM60ND <sup>(1)</sup>	600	0.11	-	29	80.4	TO-220
STW34NM60ND <sup>(1)</sup>	600	0.11	-	29	80.4	TO-247
STL36N60M6 <sup>(*)</sup>	600	0.11	-	25	48	PowerFLAT 8x8 HV
STB36NM60ND <sup>(1)</sup>	600	0.11	Yes	29	80.4	D <sup>2</sup> PAK
STW36NM60ND <sup>(1)</sup>	600	0.11	Yes	29	80.4	TO-247
STWA37N60DM2AG <sup>(*)M1)</sup>	600	0.11	Yes	28	54	TO-247 long leads
STB35N60DM2 <sup>(1)</sup>	600	0.11	-	28	54	D <sup>2</sup> PAK
STB37N60DM2AG <sup>(1)</sup>	600	0.11	Yes	28	54	D <sup>2</sup> PAK
STF35N60DM2 <sup>(1)</sup>	600	0.11	-	28	54	TO-220FP
STP35N60DM2 <sup>(1)</sup>	600	0.11	-	28	54	TO-220
STW35N60DM2 <sup>(1)</sup>	600	0.11	-	28	54	TO-247
STW37N60DM2AG <sup>(1)</sup>	600	0.11	Yes	28	54	TO-247
STP33N60M6 <sup>(*)</sup>	600	0.125	-	-	-	TO-220
STW33N60M6 <sup>(*)</sup>	600	0.125	-	-	-	TO-247
STF33N60M6 <sup>(*)</sup>	600	0.125	-	-	-	TO-220FP
STB33N60M2	600	0.125	-	26	45.5	D <sup>2</sup> PAK
STF33N60M2	600	0.125	-	26	45.5	TO-220FP
STI33N60M2	600	0.125	-	26	45.5	I <sup>2</sup> PAK
STP33N60M2	600	0.125	-	26	45.5	TO-220
STW33N60M2	600	0.125	-	26	45.5	TO-247
STF33N60DM2 <sup>(1)</sup>	600	0.13	-	24	80	TO-220FP
STE40NC60	600	0.13	-	40	307.5	ISOTOP
STP33N60DM2 <sup>(1)</sup>	600	0.13	-	24	80	TO-220FP

Note: (\*) coming soon, (1) Fast recovery diode devices

## N-CHANNEL >350 V TO 700 V (CONT'D)

Part Number	V <sub>DSS</sub> (V)	R <sub>DS(on)</sub> (max) @ V <sub>GS</sub> 10 V (Ω)	Automotive Grade	I <sub>D(Cont)</sub> (A)	Q <sub>g</sub> (typ) (nC)	Package
STB33N60DM2 <sup>(1)</sup>	600	0.13	-	24	80	D <sup>2</sup> PAK
STL33N60M6 <sup>(*)</sup>	600	0.135	-	-	-	PowerFLAT 8x8 HV
STL33N60M2	600	0.135	-	22	45.5	PowerFLAT 8x8 HV
STL33N60DM2 <sup>(1)</sup>	600	0.14	-	22	80	PowerFLAT 8x8 HV
STW33N60DM2 <sup>(1)</sup>	600	0.13	-	24	80	TO-247
STB28N60M2	600	0.15	-	22	36	D <sup>2</sup> PAK
STF28N60M2	600	0.15	-	22	36	TO-220FP
STF128N60M2	600	0.15	-	22	36	I <sup>2</sup> PAKFP
STP28N60M2	600	0.15	-	22	36	TO-220
STW28N60M2	600	0.15	-	22	36	TO-247
STB28N60DM2 <sup>(1)</sup>	600	0.16	-	22	34	D <sup>2</sup> PAK
STP28N60DM2 <sup>(1)</sup>	600	0.16	-	22	34	TO-220
STW28N60DM2 <sup>(1)</sup>	600	0.16	-	22	34	TO-247
STF28N60DM2 <sup>(1)</sup>	600	0.16	-	22	34	TO-220FP
STB27NM60ND	600	0.16	Yes	21	80	D <sup>2</sup> PAK
STL28N60M2	600	0.161	-	-	36	PowerFLAT 8x8 HV
STF27N60M2-EP	600	0.163	-	20	33	TO-220FP
STP27N60M2-EP	600	0.163	-	20	33	TO-220
STW27N60M2-EP	600	0.163	-	20	33	TO-247
STF26N60M2	600	0.165	-	20	34	TO-220FP
STF126N60M2	600	0.165	-	20	34	I <sup>2</sup> PAKFP
STP26N60M2	600	0.165	-	20	34	TO-220
STW26N60M2	600	0.165	-	20	34	TO-247
STP26N60M6	600	0.168	-	-	-	TO-220
STF26N60M6	600	0.168	-	-	-	TO-220FP
STW26N60M6	600	0.168	-	-	-	TO-247
STL28N60DM2 <sup>(1)</sup>	600	0.175	-	-	34	PowerFLAT 8x8 HV
STB24N60M6 <sup>(*)</sup>	600	0.19	-	-	-	D <sup>2</sup> PAK

Note: (\*) coming soon, (1) Fast recovery diode devices

## N-CHANNEL >350 V TO 700 V (CONT'D)

Part Number	V <sub>DSS</sub> (V)	R <sub>DS(on)</sub> (max) @ V <sub>GS</sub> 10 V (Ω)	Automotive Grade	I <sub>D(Cont)</sub> (A)	Q <sub>g</sub> (typ) (nC)	Package
STI24N60M6 <sup>(*)</sup>	600	0.19	-	-	-	I <sup>2</sup> PAK
STF24N60M6 <sup>(*)</sup>	600	0.19	-	-	-	TO-220FP
STW24N60M6 <sup>(*)</sup>	600	0.19	-	-	-	TO-247
STP24N60M6 <sup>(*)</sup>	600	0.19	-	-	-	TO-220
STF25N60M2-EP	600	0.19	-	18	29	TO-220FP
STP25N60M2-EP	600	0.19	-	18	29	TO-220
STW25N60M2-EP	600	0.19	-	18	29	TO-247
STB24N60M2	600	0.19	-	18	29	D <sup>2</sup> PAK
STF24N60M2	600	0.19	-	18	29	TO-220FP
STFI24N60M2	600	0.19	-	18	29	I <sup>2</sup> PAKFP
STFU24N60M2	600	0.19	-	18	29	TO-220FP ultra narrow leads
STFW24N60M2	600	0.19	-	18	29	TO-3PF
STI24N60M2	600	0.19	-	18	29	I <sup>2</sup> PAK
STP24N60M2	600	0.19	-	18	29	TO-220
STW24N60M2	600	0.19	-	18	29	TO-247
STB24N60DM2 <sup>(1)</sup>	600	0.2	-	18	29	D <sup>2</sup> PAK
STP24N60DM2 <sup>(1)</sup>	600	0.2	-	-	-	TO-220
STB24N60DM2 <sup>(1)</sup>	600	0.2	-	-	-	D <sup>2</sup> PAK
STF24N60DM2 <sup>(1)</sup>	600	0.2	-	-	-	TO-220FP
STW24N60DM2 <sup>(1)</sup>	600	0.2	-	-	-	TO-247
STF24N60DM2 <sup>(1)</sup>	600	0.2	-	18	29	TO-220FP
STP24N60DM2 <sup>(1)</sup>	600	0.2	-	18	29	TO-220
STW24N60DM2 <sup>(1)</sup>	600	0.2	-	18	29	TO-247
STL25N60M2-EP <sup>(1)</sup>	600	0.206	-	16	29	PowerFLAT 8x8 HV
STL24N60M6 <sup>(*)</sup>	600	0.21	-	-	-	PowerFLAT 8x8 HV
STL24N60M2	600	0.21	-	18	29	PowerFLAT 8x8 HV
STL24N60DM2 <sup>(*)</sup> (1)	600	0.22	-	-	-	PowerFLAT 8x8 HV
STB22N60M6 <sup>(*)</sup>	600	0.23	-	-	20	D <sup>2</sup> PAK

Note: (\*) coming soon, (1) Fast recovery diode devices



## N-CHANNEL >350 V TO 700 V (CONT'D)

Part Number	V <sub>DSS</sub> (V)	R <sub>DS(on)</sub> (max) @ V <sub>GS</sub> 10 V (Ω)	Automotive Grade	I <sub>D(Cont)</sub> (A)	Q <sub>g</sub> (typ) (nC)	Package
STP22N60M6 <sup>(*)</sup>	600	0.23	-	-	20	TO-220
STF22N60M6 <sup>(*)</sup>	600	0.23	-	-	20	TO-220FP
STB20N60M2-EP	600	0.278	-	13	22	D <sup>2</sup> PAK
STF20N60M2-EP	600	0.278	-	13	22	TO-220FP
STI20N60M2-EP	600	0.278	-	13	22	I <sup>2</sup> PAK
STP20N60M2-EP	600	0.278	-	13	22	TO-220
STW20N60M2-EP	600	0.278	-	13	22	TO-247
STF18N60M6 <sup>(*)</sup>	600	0.28	-	-	-	TO-220FP
STP18N60M6 <sup>(*)</sup>	600	0.28	-	-	-	TO-220
STD18N60M6 <sup>(*)</sup>	600	0.28	-	-	-	DPAK
STI18N60M6 <sup>(*)</sup>	600	0.28	-	-	-	I <sup>2</sup> PAK
STB18N60M6 <sup>(*)</sup>	600	0.28	-	-	-	D <sup>2</sup> PAK
STB18N60M2	600	0.28	-	13	21.5	D <sup>2</sup> PAK
STF18N60M2	600	0.28	-	13	21.5	TO-220FP
STP18N60M2	600	0.28	-	13	21.5	TO-220
STW18N60M2	600	0.28	-	13	21.5	TO-247
STF18NM60N	600	0.285	-	13	35	TO-220FP
STP18NM60N	600	0.285	-	13	35	TO-220
STW19NM60N	600	0.285	Yes	13	35	TO-247
STB18N60DM2 <sup>(1)</sup>	600	0.295	-	12	20	D <sup>2</sup> PAK
STW18N60DM2 <sup>(1)</sup>	600	0.295	-	12	20	TO-247
STP18N60DM2 <sup>(1)</sup>	600	0.295	-	12	20	TO-220
STW18N60DM2 <sup>(1)</sup>	600	0.295	-	12	20	TO-247
STF18N60DM2 <sup>(1)</sup>	600	0.295	-	12	20	TO-220FP
STL18N60M2	600	0.308	-	9	21.5	PowerFLAT 5x6 HV
STL19N60M2	600	0.308	-	12	21.5	PowerFLAT 8x8 HV
STFU18N60M2	600	0.308	-	9	21.5	TO-220FP ultra narrow leads
STL18N60M6 <sup>(*)</sup>	600	0.31	-	-	-	PowerFLAT 5x6 HV

Note: (\*) coming soon, (1) Fast recovery diode devices

## N-CHANNEL >350 V TO 700 V (CONT'D)

Part Number	V <sub>DSS</sub> (V)	R <sub>DS(on)</sub> (max) @ V <sub>GS</sub> 10 V (Ω)	Automotive Grade	I <sub>D(Cont)</sub> (A)	Q <sub>g</sub> (typ) (nC)	Package
STL18NM60N	600	0.31	-	12	35	PowerFLAT 8x8 HV
STW16N60M6 <sup>(*)</sup>	600	0.32	-	12	18	TO-247
STD16N60M6 <sup>(*)</sup>	600	0.32	-	12	18	DPAK
STP16N60M6 <sup>(*)</sup>	600	0.32	-	12	18	TO-220
STF16N60M6 <sup>(*)</sup>	600	0.32	-	12	18	TO-220FP
STL19N60DM2 <sup>(1)</sup>	600	0.32	-	-	20	PowerFLAT 8x8 HV
STD16N60M2	600	0.32	-	12	19	DPAK
STF16N60M2	600	0.32	-	12	19	TO-220FP
STP16N60M2	600	0.32	-	12	19	TO-220
STU16N60M2	600	0.32	-	12	18	IPAK
STF116N60M6 <sup>(*)</sup>	600	0.32	-	12	18	I <sup>2</sup> PAKFP
STL16N60M6 <sup>(*)</sup>	600	0.35	-	8	18	PowerFLAT 5x6 HV
STL16N60M2	600	0.355	-	8	19	PowerFLAT 5x6 HV
STP13NM60N	600	0.36	-	11	30	TO-220
STD13N60DM2 <sup>(*)</sup> (1)	600	0.365	-	8.5	13	DPAK
STF13N60DM2 <sup>(*)</sup> (1)	600	0.365	-	8.5	13	TO-220FP
STD13N60DM2 <sup>(*)</sup> (1)	600	0.365	-	12	20	DPAK
STD15N60M2-EP	600	0.378	-	11	17	DPAK
STF15N60M2-EP	600	0.378	-	11	17	TO-220FP
STF115N60M2-EP	600	0.378	-	11	17	I <sup>2</sup> PAKFP
STP15N60M2-EP	600	0.378	-	11	17	TO-220
STD13NM60ND <sup>(1)</sup>	600	0.38	-	11	24.5	DPAK
STF13NM60ND <sup>(1)</sup>	600	0.38	-	11	24.5	TO-220FP
STB13N60M2	600	0.38	-	11	17	D <sup>2</sup> PAK
STD13N60M2	600	0.38	-	11	17	DPAK
STF13N60M2	600	0.38	-	11	17	TO-220FP
STP13N60M2	600	0.38	-	11	17	TO-220
STU13N60M2	600	0.38	-	11	17	IPAK

Note: (\*) coming soon, (1) Fast recovery diode devices

## N-CHANNEL >350 V TO 700 V (CONT'D)

Part Number	V <sub>DSS</sub> (V)	R <sub>DS(on)</sub> (max) @ V <sub>GS</sub> 10 V (Ω)	Automotive Grade	I <sub>D(Cont)</sub> (A)	Q <sub>s</sub> (typ) (nC)	Package
STW13N60M2	600	0.38	-	11	17	TO-247
STF13N60M2	600	0.38	-	11	17	TO-220FP ultra narrow leads
STL13N60DM2 <sup>(*)</sup> (1)	600	0.38	-	8.5	20	PowerFLAT 5x6 HV
STL15N60M2-EP	600	0.418	-	7	17	PowerFLAT 5x6 HV
STL13N60M2	600	0.42	-	7	16	PowerFLAT 5x6 HV
STP11N60DM2 <sup>(*)</sup> (1)	600	0.42	-	11	16	TO-220
STF11N60DM2 <sup>(*)</sup> (1)	600	0.42	-	11	16	TO-220FP
STD11N60DM2 <sup>(*)</sup> (1)	600	0.42	-	11	16	DPAK
STD12N60M2	600	0.45	-	9	16	DPAK
STF12N60M2	600	0.45	-	9	16	TO-220FP
STF12N60M2	600	0.45	-	9	16	IPAKFP
STP12N60M2	600	0.45	-	9	16	TO-220
STU12N60M2	600	0.45	-	9	16	IPAK
STL12N60M2	600	0.495	-	6.5	16	PowerFLAT 5x6 HV
STF10N60DM2 <sup>(*)</sup> (1)	600	0.53	-	8.5	14	TO-220FP
STD10N60DM2 <sup>(*)</sup> (1)	600	0.53	-	8.5	14	DPAK
STD11N60M2-EP	600	0.595	-	7.5	12	DPAK
STF11N60M2-EP	600	0.595	-	7.5	12	TO-220FP
STF11N60M2-EP	600	0.595	-	7.5	12	IPAKFP
STD10NM60ND <sup>(1)</sup>	600	0.6	-	8	20	DPAK
STF10NM60ND <sup>(1)</sup>	600	0.6	-	8	20	TO-220FP
STB10N60M2	600	0.6	-	7.5	13.5	D <sup>2</sup> PAK
STD10N60M2	600	0.6	-	7.5	13.5	DPAK
STF10N60M2	600	0.6	-	7.5	13.5	TO-220FP
STP10N60M2	600	0.6	-	7.5	13.5	TO-220
STU10N60M2	600	0.6	-	7.5	13.5	IPAK
STF8N60DM2 <sup>(*)</sup> (1)	600	0.6	-	8	13.5	TO-220FP
STD8N60DM2 <sup>(*)</sup> (1)	600	0.6	-	8	13.5	DPAK

Note: (\*) coming soon, (1) Fast recovery diode devices

## N-CHANNEL >350 V TO 700 V (CONT'D)

Part Number	V <sub>DSS</sub> (V)	R <sub>DS(on)</sub> (max) @ V <sub>GS</sub> 10 V (Ω)	Automotive Grade	I <sub>D(Cont)</sub> (A)	Q <sub>g</sub> (typ) (nC)	Package
STL11N60M2-EP	600	0.652	-	4	12	PowerFLAT 5X5 HV
STL10N60M2	600	0.66	-	5.5	13.5	PowerFLAT 5x6 HV
STD9N60M2	600	0.78	-	5.5	10	DPAK
STF9N60M2	600	0.78	-	5.5	10	TO-220FP
STP9N60M2	600	0.78	-	5.5	10	TO-220
STU9N60M2	600	0.78	-	5.5	10	IPAK
STL9N60M2	600	0.86	-	4.8	10	PowerFLAT 5x6 HV
STD7NM60N	600	0.9	-	5	14	DPAK
STU7NM60N	600	0.9	-	5	14	IPAK
STD10N60M2	600	0.95	-	5	8.8	TO-220FP
STD7N60M2	600	0.95	-	5	8.8	DPAK
STF7N60M2	600	0.95	-	5	8.8	TO-220FP
STP7N60M2	600	0.95	-	5	8.8	TO-220
STU7N60M2	600	0.95	-	5	8.8	IPAK
STL7N60M2	600	1.05	-	5	8.8	PowerFLAT 5X5 HV
STB6N60M2	600	1.2	-	4.5	8	D <sup>2</sup> PAK
STD6N60M2	600	1.2	-	4.5	8	DPAK
STF6N60M2	600	1.2	-	4.5	8	TO-220FP
STP6N60M2	600	1.2	-	4.5	8	TO-220
STU6N60M2	600	1.2	-	4.5	8	IPAK
STD5N60M2	600	1.4	-	3.7	4.5	DPAK
STF5N60M2	600	1.4	-	3.7	4.5	TO-220FP
STP5N60M2	600	1.4	-	3.7	4.5	TO-220
STU5N60M2	600	1.4	-	3.7	4.5	IPAK
STD5N60DM2 <sup>(*)</sup> (1)	600	1.55	-	3.5	8.6	DPAK
STD3NM60N	600	1.8	-	3.3	9.5	DPAK
STL3NM60N	600	1.8	-	2.2	9.5	PowerFLAT 3.3 X 3.3 HV
STD2LN60K3	600	4.5	-	2	12	DPAK

Note: (\*) coming soon, (1) Fast recovery diode devices

## N-CHANNEL >350 V TO 700 V (CONT'D)

Part Number	V <sub>DSS</sub> (V)	R <sub>DS(on)</sub> (max) @ V <sub>GS</sub> 10 V (Ω)	Automotive Grade	I <sub>D(Cont)</sub> (A)	Q <sub>g</sub> (typ) (nC)	Package
STQ2LN60K3-AP	600	4.5	-	2	9	TO-92
STF17N62K3	620	0.34	-	15.5	105	TO-220FP
STF10N62K3	620	0.75	-	8.4	42	TO-220FP
STF110N62K3	620	0.75	-	8.4	42	IPAKFP
STD6N62K3	620	1.2	-	5.5	34	DPAK
STF6N62K3	620	1.2	-	5.5	34	TO-220FP
STP6N62K3	620	1.2	-	5.5	34	TO-220
STU6N62K3	620	1.2	-	5.5	34	IPAK
STD5N62K3	620	1.6	-	4.2	26	DPAK
STD4N62K3	620	2	-	3.8	22	DPAK
STF4N62K3	620	2	-	3.8	22	TO-220FP
STU4N62K3	620	2	-	3.8	22	IPAK
STD3N62K3	620	2.5	-	2.7	13	DPAK
STF3N62K3	620	2.5	-	2.7	13	TO-220FP
STD3LN62K3	620	3	-	2.5	17	DPAK
STU3LN62K3	620	3	-	2.5	17	IPAK
STD2N62K3	620	3.6	-	2.2	15	DPAK
STF2N62K3	620	3.6	-	2.2	15	TO-220FP
STU2N62K3	620	3.6	-	2.2	10	IPAK
STE145N65M5	650	0.015	-	138	414	ISOTOP
STY145N65M5	650	0.015	-	138	434	Max247
STE139N65M5 <sup>(*)</sup>	650	0.017	-	130	363	ISOTOP
STY139N65M5	650	0.017	-	130	363	Max247
STE88N65M5	650	0.029	-	88	204	ISOTOP
STW88N65M5	650	0.029	-	84	204	TO-247
STW88N65M5-4	650	0.029	-	84	204	TO247-4
STWA88N65M5	650	0.029	-	84	204	TO-247 long leads
STW78N65M5	650	0.032	Yes	69	203	TO-247

Note: (\*) coming soon, (1) Fast recovery diode devices

## N-CHANNEL >350 V TO 700 V (CONT'D)

Part Number	V <sub>DSS</sub> (V)	R <sub>DS(on)</sub> (max) @ V <sub>GS</sub> 10 V (Ω)	Automotive Grade	I <sub>D(Cont)</sub> (A)	Q <sub>3</sub> (typ) (nC)	Package
STFW69N65M5	650	0.045	-	58	143	TO-3PF
STW69N65M5	650	0.045	-	58	143	TO-247
STW69N65M5-4	650	0.045	-	58	143	TO247-4
STW62N65M5	650	0.049	Yes	46	142	TO-247
STWA65N65DM2AG <sup>(1)</sup>	650	0.05	Yes	60	120	TO-247 long leads
STW65N65DM2AG <sup>(1)</sup>	650	0.05	Yes	60	120	TO-247
STW70N65M2	650	0.062	-	48	110	TO-247
STW56N65M2	650	0.062	-	49	93	TO-247
STW56N65M2-4	650	0.062	-	49	93	TO247-4
STB43N65M5	650	0.063	Yes	42	100	D2PAK
STB57N65M5	650	0.063	-	42	98	D2PAK
STF57N65M5	650	0.063	-	42	98	TO-220FP
STP57N65M5	650	0.063	-	42	98	TO-220
STW57N65M5	650	0.063	-	42	98	TO-247
STW57N65M5-4	650	0.063	-	42	98	TO247-4
STWA57N65M5	650	0.063	-	42	98	TO-247 long leads
STW56N65DM2 <sup>(1)</sup>	650	0.065	-	48	88	TO-247
STW58N65DM2AG <sup>(1)</sup>	650	0.065	Yes	48	88	TO-247
STL57N65M5	650	0.069	-	22.5	96	PowerFLAT 8x8 HV
STB45N65M5	650	0.078	-	35	82	D <sup>2</sup> PAK
STF45N65M5	650	0.078	-	35	82	TO-220FP
STFW45N65M5	650	0.078	-	35	82	TO-3PF
STP45N65M5	650	0.078	-	35	82	TO-220
STW45N65M5	650	0.078	-	35	82	TO-247
STWA45N65M5	650	0.078	-	35	82	TO-247 long leads
STL45N65M5	650	0.086	-	22.5	82	PowerFLAT 8x8 HV
STW50N65DM2AG <sup>(1)</sup>	650	0.087	Yes	38	70	TO-247
STB38N65M5	650	0.095	-	30	71	D <sup>2</sup> PAK

Note: (\*) coming soon, (1) Fast recovery diode devices

## N-CHANNEL >350 V TO 700 V (CONT'D)

Part Number	V <sub>DSS</sub> (V)	R <sub>DS(on)</sub> (max) @ V <sub>GS</sub> 10 V (Ω)	Automotive Grade	I <sub>D(Cont)</sub> (A)	Q <sub>g</sub> (typ) (nC)	Package
STF38N65M5	650	0.095	-	30	71	TO-220FP
STFW38N65M5	650	0.095	-	30	71	TO-3PF
STP38N65M5	650	0.095	-	30	71	TO-220
STW38N65M5	650	0.095	-	30	71	TO-247
STW38N65M5-4 <sup>(*)</sup>	650	0.095	-	30	71	TO247-4
STF40N65M2	650	0.099	-	32	56	TO-220FP
STI40N65M2	650	0.099	-	32	56	I <sup>2</sup> PAK
STP40N65M2	650	0.099	-	32	56	TO-220
STW40N65M2	650	0.099	-	32	56	TO-247
STL38N65M5	650	0.105	-	22.5	71	PowerFLAT 8x8 HV
STB34N65M5	650	0.11	-	29	70	D <sup>2</sup> PAK
STF34N65M5	650	0.11	-	29	70	TO-220FP
STFI34N65M5	650	0.11	-	29	70	I <sup>2</sup> PAKFP
STP34N65M5	650	0.11	-	29	70	TO-220
STW34N65M5	650	0.11	-	29	70	TO-247
STL34N65M5	650	0.12	-	22.5	62.5	PowerFLAT 8x8 HV
STB33N65M2	650	0.14	-	24	41.5	D <sup>2</sup> PAK
STF33N65M2	650	0.14	-	24	41.5	TO-220FP
STI33N65M2	650	0.14	-	24	41.5	I <sup>2</sup> PAK
STP33N65M2	650	0.14	-	24	41.5	TO-220
STB31N65M5	650	0.148	-	22	55	D <sup>2</sup> PAK
STF31N65M5	650	0.148	-	22	55	TO-220FP
STFI31N65M5	650	0.148	-	22	55	I <sup>2</sup> PAKFP
STP31N65M5	650	0.148	-	22	55	TO-220
STW31N65M5	650	0.148	-	22	55	TO-247
STL33N65M2	650	0.154	-	20	41.5	PowerFLAT 8x8 HV
STL31N65M5	650	0.162	-	15	45	PowerFLAT 8x8 HV
STB28N65M2	650	0.18	-	20	35	D <sup>2</sup> PAK

Note: (\*) coming soon, (1) Fast recovery diode devices

## N-CHANNEL >350 V TO 700 V (CONT'D)

Part Number	V <sub>DSS</sub> (V)	R <sub>DS(on)</sub> (max) @ V <sub>GS</sub> 10 V (Ω)	Automotive Grade	I <sub>D(Cont)</sub> (A)	Q <sub>g</sub> (typ) (nC)	Package
STF28N65M2	650	0.18	-	20	35	TO-220FP
STFU28N65M2	650	0.18	-	20	35	TO-220FP ultra narrow leads
STP28N65M2	650	0.18	-	20	35	TO-220
STW28N65M2	650	0.18	-	20	35	TO-247
STB20N65M5	650	0.19	-	18	36	D <sup>2</sup> PAK
STF20N65M5	650	0.19	-	18	36	TO-220FP
STFI20N65M5	650	0.19	-	18	36	I <sup>2</sup> PAKFP
STP20N65M5	650	0.19	-	18	36	TO-220
STW20N65M5	650	0.19	-	18	36	TO-247
STL22N65M5	650	0.22	-	15	45	PowerFLAT 8x8 HV
STF18N65M5	650	0.22	-	15	34	TO-220FP
STP18N65M5	650	0.22	-	15	34	TO-220
STB24N65M2	650	0.23	-	16	29	D <sup>2</sup> PAK
STF24N65M2	650	0.23	-	16	29	TO-220FP
STP24N65M2	650	0.23	-	16	29	TO-220
STL18N65M5	650	0.24	-	15	31	PowerFLAT 5x6 HV
STL19N65M5	650	0.24	-	12.5	31	PowerFLAT 8x8 HV
STL24N65M2	650	0.25	-	14	29	PowerFLAT 8x8 HV
STF18N65M2	650	0.33	-	12	20	TO-220FP
STFU18N65M2	650	0.33	-	12	20	TO-220FP ultra narrow leads
STI18N65M2	650	0.33	-	12	20	I <sup>2</sup> PAK
STP18N65M2	650	0.33	-	12	20	TO-220
STFI18N65M2	650	0.33	-	12	20	I <sup>2</sup> PAKFP
STB15N65M5	650	0.34	-	11	22	D <sup>2</sup> PAK
STD15N65M5	650	0.34	-	11	22	DPAK
STF15N65M5	650	0.34	-	11	22	TO-220FP
STFI15N65M5	650	0.34	-	11	22	I <sup>2</sup> PAKFP
STP15N65M5	650	0.34	-	11	22	TO-220
STD16N65M2	650	0.36	-	11	19.5	DPAK



## N-CHANNEL >350 V TO 700 V (CONT'D)

Part Number	V <sub>DSS</sub> (V)	R <sub>DS(on)</sub> (max) @ V <sub>GS</sub> 10 V (Ω)	Automotive Grade	I <sub>D(Cont)</sub> (A)	Q <sub>g</sub> (typ) (nC)	Package
STF16N65M2	650	0.36	-	11	19.5	TO-220FP
STP16N65M2	650	0.36	-	11	19.5	TO-220
STU16N65M2	650	0.36	-	11	19.5	IPAK
STL18N65M2	650	0.365	-	8	20	PowerFLAT 5x6 HV
STL17N65M5	650	0.374	-	10	22	PowerFLAT 8x8 HV
STL15N65M5	650	0.375	-	10	22	PowerFLAT 5x6 HV
STL16N65M2	650	0.395	-	7.5	19.5	PowerFLAT 5x6 HV
STL16N65M2	650	0.395	-	7.5	-	PowerFLAT 5x6 HV
STD13N65M2	650	0.43	-	10	17	DPAK
STF13N65M2	650	0.43	-	10	17	TO-220FP
STF113N65M2	650	0.43	-	10	17	I <sup>2</sup> PAKFP
STFU13N65M2	650	0.43	-	10	17	TO-220FP ultra narrow leads
STP13N65M2	650	0.43	-	10	17	TO-220
STU13N65M2	650	0.43	-	10	17	IPAK
STL13N65M2	650	0.475	-	6.5	17	PowerFLAT 5x6 HV
STD11N65M5	650	0.48	-	9	17	DPAK
STF11N65M5	650	0.48	-	9	17	TO-220FP
STP11N65M5	650	0.48	-	9	17	TO-220
STD12N65M2	650	0.5	-	8	16.5	DPAK
STF12N65M2	650	0.5	-	8	16.5	TO-220FP
STP12N65M2	650	0.5	-	8	16.5	TO-220
STL12N65M5	650	0.53	-	8.5	17	PowerFLAT 5x6 HV
STL12HN65M2	650	0.55	-	8	16.5	PowerFLAT 5x6 HV
STD11N65M2	650	0.68	-	7	12.5	DPAK
STF11N65M2	650	0.68	-	7	12.5	TO-220FP
STF11N65M2	650	0.68	-	7	12.5	I <sup>2</sup> PAKFP
STP11N65M2	650	0.68	-	7	12.5	TO-220
STU11N65M2	650	0.68	-	7	12.5	IPAK
STL12N65M2	650	0.75	-	5	12.5	PowerFLAT 5x6 HV

## N-CHANNEL >350 V TO 700 V (CONT'D)

Part Number	$V_{DSS}$ (V)	$R_{DS(on)}$ (max) @ $V_{GS}$ 10 V ( $\Omega$ )	Automotive Grade	$I_{D(Cont)}$ (A)	$Q_g$ (typ) (nC)	Package
STL11N65M2	650	0.75	-	5	12.5	PowerFLAT 5X5 HV
STD9HN65M2	650	0.82	-	5.5	11.5	DPAK
STF9HN65M2	650	0.82	-	5.5	11.5	TO-220FP
STU9HN65M2	650	0.82	-	5.5	11.5	IPAK
STD9N65M2	650	0.9	-	5	10	DPAK
STF9N65M2	650	0.9	-	5	10	TO-220FP
STP9N65M2	650	0.9	-	5	10	TO-220
STU9N65M2	650	0.9	-	5	10	IPAK
STL10HN65M2	650	0.9	-	5	11.5	PowerFLAT 5x6 HV
STD7N65M6 <sup>(*)</sup>	650	0.99	-	5	-	DPAK
STU7N65M6 <sup>(*)</sup>	650	0.99	-	5	-	IPAK
STL9N65M2	650	1	-	4.5	10	PowerFLAT 5X5 HV
STL10N65M2	650	1	-	4.5	10	PowerFLAT 5x6 HV
STF10N65K3	650	1	-	10	42	TO-220FP
STP7N65M2	650	1.15	-	5	9	TO-220
STU7N65M2	650	1.15	-	5	9	IPAK
STD7N65M2	650	1.15	-	5	9	DPAK
STF7N65M2	650	1.15	-	5	9	TO-220FP
STD7N65M2	650	1.15	-	5	9	DPAK
STF7N65M2	650	1.15	-	5	9	TO-220FP
STP7N65M2	650	1.15	-	5	9	TO-220
STU7N65M2	650	1.15	-	5	9	IPAK
STL8N65M2	650	1.25	-	5	9	PowerFLAT 5x6 HV
STL8N65M2	650	1.25	-	5	9	PowerFLAT 5x6 HV
STU5N65M6 <sup>(*)</sup>	650	1.3	-	3.8	7	IPAK
STF5N65M6 <sup>(*)</sup>	650	1.3	-	3.8	7	TO-220FP
STD5N65M6 <sup>(*)</sup>	650	1.3	-	3.8	7	DPAK
STF6N65K3	650	1.3	-	5.4	33	TO-220FP

Note: (\*) coming soon, (1) Fast recovery diode devices

## N-CHANNEL >350 V TO 700 V (CONT'D)

Part Number	$V_{DSS}$ (V)	$R_{DS(on)}$ (max) @ $V_{GS}$ 10 V ( $\Omega$ )	Automotive Grade	$I_{D(Cont)}$ (A)	$Q_g$ (typ) (nC)	Package
STB6N65M2	650	1.35	-	4	9.8	D <sup>2</sup> PAK
STD6N65M2	650	1.35	-	4	9.8	DPAK
STF6N65M2	650	1.35	-	4	9.8	TO-220FP
STP6N65M2	650	1.35	-	4	9.8	TO-220
STU6N65M2	650	1.35	-	4	9.8	IPAK
STL3N65M6 <sup>(*)</sup>	650	1.5	-	3.5	-	PowerFLAT 3.3 X 3.3 HV
STF3N65M6 <sup>(*)</sup>	650	1.5	-	3.5	-	TO-220FP
STU3N65M6 <sup>(*)</sup>	650	1.5	-	3.5	-	IPAK
STD3N65M6 <sup>(*)</sup>	650	1.5	-	3.5	-	DPAK
STU7N70M6 <sup>(*)</sup>	700	0.99	-	4	-	IPAK
STQ2NK60ZR-AP	600	7.8	-	0.25	7	TO-92
STD1HN60K3	600	8	-	1.2	9.5	DPAK
STN1NK60Z	600	15	-	0.3	4.9	SOT-223

Note: (\*) coming soon, (1) Fast recovery diode devices

# N-channel >700 V

Part Number	V <sub>DSS</sub> (V)	R <sub>DS(on)</sub> (max) @ V <sub>GS</sub> 10 V (Ω)	Automotive Grade	I <sub>D(Cont)</sub> (A)	Q <sub>g</sub> (typ) (nC)	Package
STW65N80K5	800	0.08	-	46	92	TO-247
STB30N80K5	800	0.18	-	24	43	D <sup>2</sup> PAK
STW30N80K5	800	0.18	-	24	43	TO-247
STB25N80K5	800	0.26	-	19.5	40	D <sup>2</sup> PAK
STF25N80K5	800	0.26	-	19.5	40	TO-220FP
STP25N80K5	800	0.26	-	19.5	40	TO-220
STW25N80K5	800	0.26	-	19.5	40	TO-247
STB23N80K5	800	0.28	-	16	33	D <sup>2</sup> PAK
STP23N80K5	800	0.28	-	16	33	TO-220
STF23N80K5	800	0.28	-	16	33	TO-220FP
STW23N80K5	800	0.28	-	16	33	TO-247
STB17N80K5	800	0.34	-	14	26	D <sup>2</sup> PAK
STF17N80K5	800	0.34	-	14	26	TO-220FP
STP17N80K5	800	0.34	-	14	26	TO-220
STB15N80K5	800	0.375	-	14	30	D <sup>2</sup> PAK
STF15N80K5	800	0.375	-	14	30	TO-220FP
STFU15N80K5	800	0.375	-	14	32	TO-220FP ultra narrow leads
STP15N80K5	800	0.375	-	14	30	TO-220
STW15N80K5	800	0.375	-	14	30	TO-247
STB14N80K5	800	0.445	-	12	22	D <sup>2</sup> PAK
STF14N80K5	800	0.445	-	12	22	TO-220FP
STFI14N80K5	800	0.445	-	12	22	I <sup>2</sup> PAKFP
STP14N80K5	800	0.445	-	12	22	TO-220
STB13N80K5	800	0.45	-	12	29	D <sup>2</sup> PAK
STF13N80K5	800	0.45	-	12	29	TO-220FP
STFI13N80K5	800	0.45	-	12	29	I <sup>2</sup> PAKFP
STP13N80K5	800	0.45	-	12	29	TO-220
STW13N80K5	800	0.45	-	12	29	TO-247

## N-CHANNEL >700 V (CONT'D)

Part Number	V <sub>DSS</sub> (V)	R <sub>DS(on)</sub> (max) @ V <sub>GS</sub> 10 V (Ω)	Automotive Grade	I <sub>D(Cont)</sub> (A)	Q <sub>g</sub> (typ) (nC)	Package
STB10LN80K5	800	0.63	-	8	15	D <sup>2</sup> PAK
STD10LN80K5	800	0.63	-	8	15	DPAK
STF10LN80K5	800	0.63	-	8	15	TO-220FP
STF110LN80K5	800	0.63	-	8	15	I <sup>2</sup> PAKFP
STP10LN80K5	800	0.63	-	8	15	TO-220
STL10LN80K5	800	0.66	-	6	15	PowerFLAT 5x6 HV
STD9N80K5	800	0.9	-	7	12.5	DPAK
STF9N80K5	800	0.9	-	7	12.5	TO-220FP
STF19N80K5	800	0.9	-	7	12.5	I <sup>2</sup> PAKFP
STL9N80K5	800	0.9	-	7	12.5	PowerFLAT 5x6 HV
STP9N80K5	800	0.9	-	7	12.5	TO-220
STW9N80K5	800	0.9	-	7	12.5	TO-247
STD8N80K5	800	0.95	-	6	16.5	DPAK
STF10N80K5	800	0.95	-	9	22	TO-220FP
STF8N80K5	800	0.95	-	6	16.5	TO-220FP
STF18N80K5	800	0.95	-	6	16.5	I <sup>2</sup> PAKFP
STL8N80K5	800	0.95	-	6	16.5	PowerFLAT 5x6 VHV
STP8N80K5	800	0.95	-	6	16.5	TO-220
STU8N80K5	800	0.95	-	6	16.5	IPAK
STD7LN80K5	800	1.15	-	5	12	DPAK
STF7LN80K5	800	1.15	-	5	12	TO-220FP
STF17LN80K5	800	1.15	-	5	12	TO-220FP
STP7LN80K5	800	1.15	-	5	12	TO-220
STU7LN80K5	800	1.15	-	5	12	IPAK
STL7LN80K5	800	1.15	-	5	12	PowerFLAT 5x6 HV
STD7N80K5	800	1.2	-	6	13.4	DPAK
STF7N80K5	800	1.2	-	6	13.4	TO-220FP
STF17N80K5	800	1.2	-	6	13.4	I <sup>2</sup> PAKFP
STL7N80K5	800	1.2	-	3.6	13.4	PowerFLAT 5x6 VHV

## N-CHANNEL >700 V (CONT'D)

Part Number	V <sub>DSS</sub> (V)	R <sub>DS(on)</sub> (max) @ V <sub>GS</sub> 10 V (Ω)	Automotive Grade	I <sub>D(Cont)</sub> (A)	Q <sub>g</sub> (typ) (nC)	Package
STP7N80K5	800	1.2	-	6	13.4	TO-220
STU7N80K5	800	1.2	-	6	13.4	IPAK
STB6N80K5	800	1.6	-	4.5	7.5	D <sup>2</sup> PAK
STD6N80K5	800	1.6	-	4.5	7.5	DPAK
STF6N80K5	800	1.6	-	4.5	7.5	TO-220FP
STF16N80K5	800	1.6	-	4.5	7.5	I <sup>2</sup> PAKFP
STI6N80K5	800	1.6	-	4.5	7.5	I <sup>2</sup> PAK
STP6N80K5	800	1.6	-	4.5	7.5	TO-220
STB5N80K5	800	1.75	-	4	5.5	D <sup>2</sup> PAK
STF15N80K5 <sup>(*)</sup>	800	1.75	-	4	5.5	I <sup>2</sup> PAKFP
STP5N80K5 <sup>(*)</sup>	800	1.75	-	4	5.5	TO-220
STD5N80K5 <sup>(*)</sup>	800	1.75	-	4	5.5	DPAK
STF5N80K5 <sup>(*)</sup>	800	1.75	-	4	5.5	TO-220FP
STL5N80K5 <sup>(*)</sup>	800	1.75	-	4	5.5	PowerFLAT 5x6 HV
STB9N80Z	800	1.8	Yes	5.2	40	D <sup>2</sup> PAK
STD4N80K5	800	2.5	-	3	10.5	DPAK
STF4N80K5	800	2.5	-	3	10.5	TO-220FP
STL4N80K5	800	2.5	-	3	10.5	PowerFLAT 5x6 HV
STP4N80K5	800	2.5	-	3	10.5	TO-220
STU4N80K5	800	2.5	-	3	10.5	IPAK
STD4LN80K5 <sup>(*)</sup>	800	2.6	-	3	4	DPAK
STF4LN80K5 <sup>(*)</sup>	800	2.6	-	3	4	TO-220FP
STL4LN80K5 <sup>(*)</sup>	800	2.6	-	3	4	PowerFLAT 5x6 HV
STP4LN80K5 <sup>(*)</sup>	800	2.6	-	3	4	TO-220
STF3LN80K5 <sup>(*)</sup>	800	3.25	-	2.4	-	TO-220FP
STD3LN80K5 <sup>(*)</sup>	800	3.25	-	2.4	-	DPAK
STP3LN80K5 <sup>(*)</sup>	800	3.25	-	2.4	-	TO-220
STU3LN80K5 <sup>(*)</sup>	800	3.25	-	2.4	-	IPAK

Note: \* coming soon

## N-CHANNEL >700 V (CONT'D)

Part Number	V <sub>DSS</sub> (V)	R <sub>DS(on)</sub> (max) @ V <sub>GS</sub> 10 V (Ω)	Automotive Grade	I <sub>D(Cont)</sub> (A)	Q <sub>g</sub> (typ) (nC)	Package
STD3N80K5	800	3.5	-	2.5	9.5	DPAK
STF3N80K5	800	3.5	-	2.5	9.5	TO-220FP
STP3N80K5	800	3.5	-	2.5	9.5	TO-220
STU3N80K5	800	3.5	-	2.5	9.5	IPAK
STD2N80K5	800	4.5	-	2	5	DPAK
STF2N80K5	800	4.5	-	2	5	TO-220FP
STP2N80K5	800	4.5	-	2	5	TO-220
STU2N80K5	800	4.5	-	2	5	IPAK
STL2N80K5	800	4.5	-	1.5	5	PowerFLAT 5x6 VHV
STD1NK80ZT4	800	16	-	1	5	DPAK
STN1NK80Z	800	16	-	0.25	5	SOT-223
STW23N85K5	850	0.275	-	19	38	TO-247
STL23N85K5(*)	850	0.275	-	18	38	PowerFLAT 8x8 HV
STW40N90K5(*)	900	0.11	-	40	95	TO-247
STWA40N90K5(*)	900	0.11	-	40	95	TO-247 long leads
STW40N95K5	950	0.13	-	38	93	TO-247
STWA40N95K5	950	0.13	-	38	93	TO-247 long leads
STB20N90K5(*)	900	0.26	-	20	45	D <sup>2</sup> PAK
STF20N90K5(*)	900	0.26	-	20	45	TO-220FP
STP20N90K5(*)	900	0.26	-	20	45	TO-220
STW20N90K5(*)	900	0.26	-	20	45	TO-247
STB21N90K5	900	0.299	-	18.5	43	D <sup>2</sup> PAK
STF21N90K5	900	0.299	-	18.5	43	TO-220FP
STP21N90K5	900	0.299	-	18.5	43	TO-220
STW21N90K5	900	0.299	-	18.5	43	TO-247
STB20N95K5	950	0.33	-	17.5	48	D <sup>2</sup> PAK
STF20N95K5	950	0.33	-	17.5	48	TO-220FP
STP20N95K5	950	0.33	-	17.5	48	TO-220

Note: \* coming soon

## N-CHANNEL >700 V (CONT'D)

Part Number	V <sub>DSS</sub> (V)	R <sub>DS(on)</sub> (max) @ V <sub>GS</sub> 10 V (Ω)	Automotive Grade	I <sub>D(Cont)</sub> (A)	Q <sub>g</sub> (typ) (nC)	Package
STW20N95K5	950	0.33	-	17.5	48	TO-247
STW22N95K5	950	0.33	Yes	17.5	48	TO-247
STWA20N95K5	950	0.33	-	17.5	48	TO-247 long leads
STF15N95K5	950	0.5	-	12	27	TO-220FP
STP15N95K5	950	0.5	-	12	27	TO-220
STW15N95K5	950	0.5	-	12	27	TO-247
STW8N90K5 <sup>(*)</sup>	900	0.8	-	8	17	TO-247
STP8N90K5 <sup>(*)</sup>	900	0.8	-	8	17	TO-220
STF8N90K5 <sup>(*)</sup>	900	0.8	-	8	17	TO-220FP
STB8N90K5 <sup>(*)</sup>	900	0.8	-	8	17	D <sup>2</sup> PAK
STB10N95K5	950	0.8	-	8	20	D <sup>2</sup> PAK
STB10N95K5	950	0.8	-	8	20	D <sup>2</sup> PAK
STF10N95K5	950	0.8	-	8	20	TO-220FP
STP10N95K5	950	0.8	-	8	20	TO-220
STW10N95K5	950	0.8	-	8	20	TO-247
STD6N90K5 <sup>(*)</sup>	900	1.25	-	6	13	DPAK
STF6N90K5 <sup>(*)</sup>	900	1.25	-	6	13	TO-220FP
STP6N90K5 <sup>(*)</sup>	900	1.25	-	6	13	TO-220
STU6N90K5 <sup>(*)</sup>	900	1.25	-	6	13	IPAK
STW6N90K5 <sup>(*)</sup>	900	1.25	-	6	13	TO-247
STD6N95K5	950	1.25	-	9	13	DPAK
STF6N95K5	950	1.25	-	9	13	TO-220FP
STH6N95K5-2	950	1.25	-	6	13	H <sup>2</sup> PAK-2
STP6N95K5	950	1.25	-	9	13	TO-220
STU6N95K5	950	1.25	-	9	13	IPAK
STW6N95K5	950	1.25	-	9	13	TO-247
STF9NK90Z	900	1.3	-	8	72	TO-220FP
STD4N90K5 <sup>(*)</sup>	900	2.4	-	3.5	8	DPAK

Note: \* coming soon



## N-CHANNEL >700 V (CONT'D)

Part Number	V <sub>DSS</sub> (V)	R <sub>DS(on)</sub> (max) @ V <sub>GS</sub> 10 V (Ω)	Automotive Grade	I <sub>D(Cont)</sub> (A)	Q <sub>g</sub> (typ) (nC)	Package
STF4N90K5(*)	900	2.4	-	3.5	8	TO-220FP
STP4N90K5(*)	900	2.4	-	3.5	8	TO-220
STD5N95K5	950	2.5	-	3.5	7	DPAK
STF5N95K5	950	2.5	-	3.5	7	TO-220FP
STU5N95K5	950	2.5	-	3.5	7	IPAK
STP5N95K5	950	2.5	-	3.5	7	TO-220
STD2N95K5	950	5	-	2	10	DPAK
STF2N95K5	950	5	-	2	10	TO-220FP
STP2N95K5	950	5	-	2	10	TO-220
STU3N95K5AG(*)	950	5	Yes	2	10	IPAK
STD3N95K5AG(*)	950	5	Yes	2	10	DPAK
STU2N95K5	950	5	-	2	10	IPAK
STW13NK100Z	1000	0.7	-	13.5	220	TO-247
STF10N105K5	1050	1.3	-	6	21.5	TO-220FP
STP10N105K5	1050	1.3	-	6	21.5	TO-220
STD3NK90Z	900	4.8	-	3	22.7	DPAK
STD2NK90Z	900	6.5	-	2.1	19.5	DPAK
STD2NK90Z-1	900	6.5	-	2.1	19.5	IPAK
STW10N105K5	1050	1.3	-	6	21.5	TO-247
STF7N105K5	1050	2	-	4	17	TO-220FP
STP7N105K5	1050	2	-	4	17	TO-220
STU7N105K5	1050	2	-	4	17	IPAK
STW7N105K5	1050	2	-	4	17	TO-247
STF5N105K5	1050	3.5	-	3	12.5	TO-220FP
STP5N105K5	1050	3.5	-	3	12.5	TO-220
STD3NK100Z	1000	6	-	2.5	18	DPAK
STD4NK100Z	1000	6.8	Yes	2.2	18	DPAK
STD2N105K5	1050	8	-	1.5	10	DPAK

Note: \* coming soon

## N-CHANNEL >700 V (CONT'D)

Part Number	V <sub>DSS</sub> (V)	R <sub>DS(on)</sub> (max) @ V <sub>GS</sub> 10 V (Ω)	Automotive Grade	I <sub>D(Cont)</sub> (A)	Q <sub>g</sub> (typ) (nC)	Package
STFW2N105K5	1050	8	-	1.5	10	TO-3PF
STP2N105K5	1050	8	-	1.5	10	TO-220
STU2N105K5	1050	8	-	1.5	10	IPAK
STP2NK100Z	1000	8.5	-	1.85	16	TO-220
STFW1N105K3	1050	11	-	1.4	13	TO-3PF
STF12N120K5	1200	0.69	-	12	44.2	TO-220FP
STW21N150K5	1500	0.9	-	14	95	TO-247
STW12N150K5	1500	1.9	-	7	47	TO-247
STFW12N120K5	1200	0.69	-	12	44.2	TO-3PF
STH12N120K5-2	1200	0.69	-	12	44.2	H <sup>2</sup> PAK-2
STP12N120K5	1200	0.69	-	12	44.2	TO-220
STW12N120K5	1200	0.69	-	12	44.2	TO-247
STWA12N120K5	1200	0.69	-	12	44.2	TO-247 long leads
STFW6N120K3	1200	2.4	-	6	34	TO-3PF
STP6N120K3	1200	2.4	-	6	34	TO-220
STW6N120K3	1200	2.4	-	6	34	TO-247
STW9N150	1500	2.5	-	8	89.3	TO-247
STP4N150	1500	7	-	3.1	35	TO-220
STFW4N150	1500	7	-	4	30	TO-3PF
STW4N150	1500	7	-	4	30	TO-247
STP3N150	1500	9	-	2.5	29.3	TO-220
STFW3N150	1500	9	-	2.5	29.3	TO-3PF
STH3N150-2	1500	9	-	2.5	29.3	H <sup>2</sup> PAK-2
STW3N150	1500	9	-	2.5	29.3	TO-247
STFW3N170	1700	13	-	2.6	44	TO-3PF
STW3N170	1700	13	-	2.6	44	TO-247

# P-channel

Part Number	V <sub>DSS</sub> (V)	R <sub>DS(on)</sub> (max) @ 1.8 V (Ω)	R <sub>DS(on)</sub> (max) @ 2.5 V (Ω)	R <sub>DS(on)</sub> (max) (@ 4.5 V or 5 V) (Ω)	R <sub>DS(on)</sub> (max) (@ V <sub>GS</sub> = 10 V) (Ω)	Automotive Grade	I <sub>D(Cont)</sub> (A)	Q <sub>g</sub> (typ) (nC)	Package
STD3PK50Z	-500	-	-	-	4	-	-2.8	20	DPAK
STD10P10F6	-100	-	-	-	0.18	-	-10	17	DPAK
STL13DP10F6	-100	-	-	-	0.18	-	-3.3	17	PowerFLAT 5x6 double island
STD40P8F6AG <sup>(*)</sup>	-80	-	-	-	0.028	-	-	-	DPAK
STL42P6LLF6	-60	-	-	0.034	0.026	-	-42	30	PowerFLAT 5x6
STD35P6LLF6	-60	-	-	0.036	0.028	-	-35	30	DPAK
STF21P6LLF6	-60	-	-	0.036	0.028	-	-21	30	TO-220FP
STD10P6F6	-60	-	-	-	0.16	-	-10	6.4	DPAK
STD15P6F6AG	-60	-	-	-	0.16	Yes	-10	6.4	DPAK
STF10P6F6	-60	-	-	-	0.16	-	-10	6.4	TO-220FP
STL12P6F6	-60	-	-	-	0.16	-	-3	6.4	PowerFLAT 5x6
STN3P6F6	-60	-	-	-	0.16	-	-3	6.4	SOT-223
STN4P6F6AG <sup>(*)</sup>	-60	-	-	-	0.16	Yes	-3	6.4	SOT-223
STP10P6F6	-60	-	-	-	0.16	-	-10	6.4	TO-220
STS3P6F6	-60	-	-	-	0.16	-	-3	6.4	SO-8
STU10P6F6	-60	-	-	-	0.16	-	-10	6.4	IPAK
STU10P6F6	-60	-	-	-	0.16	-	-19	6.4	IPAK
STP80PF55	-55	-	-	-	0.018	-	-80	190	TO-220
STL60P4LLF6	-40	-	-	0.0019	0.014	-	-60	34	PowerFLAT 5x6
STL65P4LLF6AG <sup>(*)</sup>	-40	-	-	0.0019	0.014	-	-60	34	PowerFLAT 5x6
STD46P4LLF6	-40	-	-	0.02	0.015	-	-50	34	DPAK
STD45P4LLF6AG	-40	-	-	0.02	0.015	Yes	-50	65.5	DPAK
STS10P4LLF6	-40	-	-	0.02	0.015	-	-10	34	SO-8
STL42P4LLF6	-40	-	-	0.026	0.018	-	-42	22	PowerFLAT 5x6
STL8P4LLF6	-40	-	-	0.029	0.0205	-	-8	22	PowerFLAT 3.3x3.3
STS7P4LLF6	-40	-	-	0.029	0.0205	-	-7	22	SO-8
STD36P4LLF6	-40	-	-	0.029	0.022	-	-36	22	DPAK

Note: \* coming soon

## P-CHANNEL (CONT'D)

Part Number	V <sub>DSS</sub> (V)	R <sub>DS(on)</sub> (max) @ 1.8 V (Ω)	R <sub>DS(on)</sub> (max) @ 2.5 V (Ω)	R <sub>DS(on)</sub> (max) (@ 4.5 V or 5 V) (Ω)	R <sub>DS(on)</sub> (max) (@ V <sub>GS</sub> = 10 V) (Ω)	Automotive Grade	I <sub>D(Cont)</sub> (A)	Q <sub>g</sub> (typ) (nC)	Package
STL150P3LLH6(*)	-30	-	-	0.0052	0.0035	-	-	93	PowerFLAT 5x6
STD95P3LLH6AG(*)	-30	-	-	0.0097	0.0068	-	-	-	DBPAK
STS10P3LLH6	-30	-	-	0.017	0.012	-	-12.5	33	SO-8
STD37P3H6AG	-30	-	-	-	0.015	Yes	-49	30.6	DBPAK
STL62P3LLH6	-30	-	-	0.0105	0.016	-	-62	25	PowerFLAT 5x6
STL65P3LLH6AG(*)	-30	-	-	0.0105	0.016	Yes	-62	33	PowerFLAT 5x6
STD52P3LLH6	-30	-	-	0.012	0.017	-	-52	33	DBPAK
STP52P3LLH6	-30	-	-	0.012	0.017	-	-52	33	TO-220
STD40P3LLH6	-30	-	-	0.03	0.018	-	-40	26	DBPAK
STL45P3LLH6	-30	-	-	0.03	0.018	-	-45	26	PowerFLAT 5x6
STL9P3LLH6	-30	-	-	0.03	0.018	-	-9	26	PowerFLAT 3.3x3.3
STS9P3LLH6	-30	-	-	0.03	0.018	-	-9	26	SO-8
STD26P3LLH6	-30	-	-	0.045	0.03	-	-24	12	DBPAK
STD28P3LLH6AG	-30	-	-	0.05	0.03	Yes	-12	29	DBPAK
STL30P3LLH6	-30	-	-	0.05	0.03	-	-30	26	PowerFLAT 5x6
STL6P3LLH6	-30	-	-	0.05	0.03	-	-6	12	PowerFLAT 3.3x3.3
STS6P3LLH6	-30	-	-	0.05	0.03	-	-6	12	SO-8
STD20P3H6AG	-30	-	-	-	0.05	Yes	-20	12.8	DBPAK
STS5PF30L	-30	-	-	0.075	0.055	-	-5	12.5	SO-8
STL4P3LLH6	-30	-	-	0.09	0.056	-	-4	6	PowerFLAT 2x2
STR2P3LLH6	-30	-	-	0.09	0.056	-	-2	6	SOT-23
STS5P3LLH6	-30	-	-	0.09	0.056	-	-5	6	SO-8
STT4P3LLH6	-30	-	-	0.09	0.056	-	-4	6	SOT23-6L
STS5DP3LLH6	-30	-	-	0.09	0.06	-	0	0	SO-8
STD20P3H6AG	-30	-	-	-	0.05	-	-20	12.8	DBPAK
STL8P2UH7	-20	0.043	0.025	0.0225	-	-	-8	22	PowerFLAT 2x2
STL9P2UH7	-20	0.043	0.025	0.0225	-	-	-9	22	PowerFLAT 3.3x3.3
STS9P2UH7	-20	0.043	0.025	0.0225	-	-	-9	22	SO-8

Note: \* coming soon

## P-CHANNEL (CONT'D)

Part Number	V <sub>DSS</sub> (V)	R <sub>DS(on)</sub> (max) @ 1.8 V (Ω)	R <sub>DS(on)</sub> (max) @ 2.5 V (Ω)	R <sub>DS(on)</sub> (max) (@ 4.5 V or 5 V) (Ω)	R <sub>DS(on)</sub> (max) (@ V <sub>GS</sub> = 10 V) (Ω)	Automotive Grade	I <sub>D(Cont)</sub> (A)	Q <sub>y</sub> (typ) (nC)	Package
STT7P2UH7	-20	0.043	0.025	0.0225	-	-	-7	22	SOT23-6L
STL4P2UH7	-20	0.18	0.13	0.1	-	-	-4	4.8	PowerFLAT 2x2
STR1P2UH7	-20	0.18	0.13	0.1	-	-	-1.4	4.8	SOT23
STT3P2UH7	-20	0.18	0.13	0.1	-	-	-3	4.8	SOT23-6L
<b>Complementary pair</b>									
STL40C30H3LL	-30	-	-	0.05	0.03	-	-30	12	PowerFLAT 5x6 double island
STL40C30H3LL	30	-	-	0.028	0.021	-	40	4.6	PowerFLAT 5x6 double island
STS8C5H30L	-30	-	-	0.75	0.55	-	-5	16	S0-8
STS8C5H30L	30	-	-	0.25	0.22	-	8	10	S0-8

# N-channel fast recovery diode

Part Number	V <sub>DSS</sub> (V)	R <sub>DS(on)</sub> (max) @ 10 V (Ω)	Automotive Grade	I <sub>D(Cont)</sub> (A)	Q <sub>g</sub> (typ) (nC)	t <sub>tr</sub> (typ) (ns)	Q <sub>rr</sub> (typ) (nC)	I <sub>rm</sub> (typ) (A)	Package
STW70N60DM2	600	0.042	-	68	121	150	750	9.6	TO-247
STW72N60DM2AG	600	0.042	Yes	68	121	150	750	9.6	TO-247
STWA72N60DM2AG(*)	600	0.042	Yes	68	121	150	720	9.6	TO-247 long leads
STWA70N60DM2	600	0.042	-	68	121	150	720	9.6	TO-247 long leads
STW56N60DM2	600	0.060	-	50	110	140	756	10.8	TO-247
STW58N60DM2AG	600	0.060	Yes	50	110	140	756	10.8	TO-247
STWA58N60DM2AG	600	0.060	Yes	50	90	140	756	10.8	TO-247 long leads
STW58N60DM2AG	600	0.060	Yes	50	90	140	756	10.8	TO-247
STW48N60DM2	600	0.079	-	40	90	130	650	10	TO-247
STW47NM60ND	600	0.088	Yes	35	120	190	1600	17	TO-247
STB43N60DM2	600	0.093	-	34	56	120	624	10.4	D <sup>2</sup> PAK
STB45N60DM2AG	600	0.093	-	34	56	120	624	10.4	D <sup>2</sup> PAK
STF43N60DM2	600	0.093	-	34	56	120	624	10.4	TO-220FP
STP43N60DM2	600	0.093	-	34	56	120	624	10.4	TO-220
STP45N60DM2AG	600	0.093	-	34	56	120	624	10.4	TO-220
STW43N60DM2	600	0.093	-	34	56	120	624	10.4	TO-247
STW45N60DM2AG	600	0.093	-	34	56	120	624	10.4	TO-247
STW45N60DM2AG	600	0.093	-	34	56	120	624	10.4	TO-247
STWA45N60DM2AG(*)	600	0.093	-	34	56	120	624	10.4	TO-247 long leads
STB35N60DM2	600	0.110	-	28	54	120	612	10.2	D <sup>2</sup> PAK
STB37N60DM2AG	600	0.110	Yes	28	54	120	612	10.2	D <sup>2</sup> PAK
STF35N60DM2	600	0.110	-	28	54	120	612	10.2	TO-220FP
STP35N60DM2	600	0.110	-	28	54	120	612	10.2	TO-220
STW35N60DM2	600	0.110	-	28	54	120	612	10.2	TO-247
STW37N60DM2AG	600	0.110	Yes	28	54	120	612	10.2	TO-247
STWA37N60DM2AG(*)	600	0.110	Yes	28	54	120	612	10.2	TO-247 long leads
STB36NM60ND	600	0.110	Yes	29	80.4	175	1400	16	D <sup>2</sup> PAK

Note: \* coming soon

## N-CHANNEL FAST RECOVERY DIODE (CONT'D)

Part Number	V <sub>DSS</sub> (V)	R <sub>DS(on)</sub> (max) @ 10 V (Ω)	Automotive Grade	I <sub>Dj(Cont)</sub> (A)	Q <sub>s</sub> (typ) (nC)	t <sub>rr</sub> (typ) (ns)	Q <sub>rr</sub> (typ) (nC)	I <sub>rm</sub> (typ) (A)	Package
STL45N60DM6 <sup>(*)</sup>	600	0.100	-	26	50	-	-	-	PowerFLAT 8x8 HV
STW36NM60ND	600	0.110	Yes	29	80.4	175	1400	16	TO-247
STB33N60DM2	600	0.130	-	24	43	120	530	8.8	D <sup>2</sup> PAK
STF33N60DM2	600	0.130	-	24	43	120	530	8.8	D <sup>2</sup> PAK
STP33N60DM2	600	0.130	-	24	43	120	530	8.8	TO-220FP
STW33N60DM2	600	0.130	-	24	43	120	530	8.8	TO-220
STL33N60DM2	600	0.140	-	21	43	120	530	8.8	PowerFLAT 8x8 HV
STB27NM60ND	600	0.160	Yes	21	80	160	1000	15	D <sup>2</sup> PAK
STW27NM60ND	600	0.160	Yes	21	80	160	1000	15	TO-247
STB28N60DM2	600	0.160	-	22	34	110	407	7.4	D <sup>2</sup> PAK
STF28N60DM2	600	0.160	-	22	34	110	407	7.4	TO-220FP
STP28N60DM2	600	0.160	-	22	34	110	407	7.4	TO-220
STW28N60DM2	600	0.160	-	22	34	110	407	7.4	TO-247
STL28N60DM2	600	0.175	-	21	34	110	407	7.4	PowerFLAT 8x8 HV
STB24N60DM2	600	0.200	-	18	29	155	956	12.5	D <sup>2</sup> PAK
STF24N60DM2	600	0.200	-	18	29	155	956	12.5	TO-220FP
STP24N60DM2	600	0.200	-	18	29	155	956	12.5	TO-220
STW24N60DM2	600	0.200	-	18	29	155	956	12.5	TO-247
STL24N60DM2	600	0.220	-	18	29	155	956	12.5	PowerFLAT 8x8 HV
STB18N60DM2	600	0.295	-	12	20	125	675	11	D <sup>2</sup> PAK
STF18N60DM2	600	0.295	-	12	20	125	675	11	TO-220FP
STP18N60DM2	600	0.295	-	12	20	125	675	11	TO-220
STW18N60DM2	600	0.295	-	12	20	125	675	11	TO-247
STL19N60DM2	600	0.320	-	11	20	125	675	11	PowerFLAT 8x8 HV
STD13N60DM2 <sup>(*)</sup>	600	0.365	-	12	20	90	252	5.6	DPAK
STF13N60DM2 <sup>(*)</sup>	600	0.365	-	12	20	90	252	5.6	TO-220FP
STL13N60DM2 <sup>(*)</sup>	600	0.380	-	12	20	90	252	5.6	PowerFLAT 5x6 HV
STD13NM60ND	600	0.380	-	11	24.5	150	755	12	DPAK

Note: \* coming soon

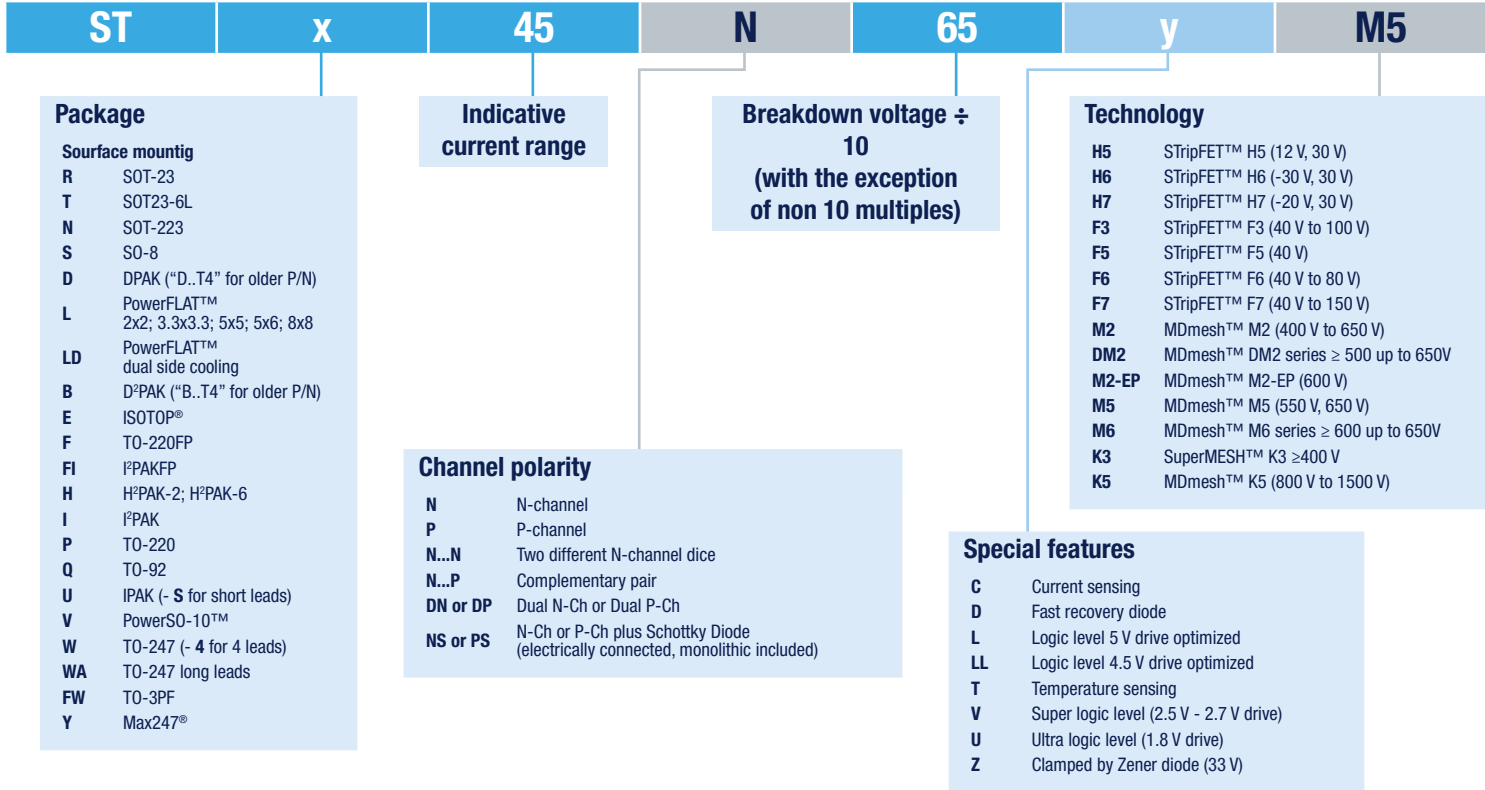
## N-CHANNEL FAST RECOVERY DIODE (CONT'D)

Part Number	V <sub>DSS</sub> (V)	R <sub>DS(on)</sub> (max) @ 10 V (Ω)	Automotive Grade	I <sub>D(Cont)</sub> (A)	Q <sub>s</sub> (typ) (nC)	t <sub>rr</sub> (typ) (ns)	Q <sub>rr</sub> (typ) (nC)	I <sub>rm</sub> (typ) (A)	Package
STF13NM60ND	600	0.380	-	11	24.5	150	755	12	TO-220FP
STD11N60DM2(*)	600	0.420	-	11	16	90	-	-	DPAK
STF11N60DM2(*)	600	0.420	-	11	16	90	-	-	TO-220FP
STP11N60DM2(*)	600	0.420	-	11	16	90	-	-	TO-220
STD10N60DM2(*)	600	0.530	-	8.5	13	90	-	-	DPAK
STF10N60DM2(*)	600	0.530	-	8.5	13	90	-	-	TO-220FP
STF10NM60ND	600	0.600	-	8	20	118	680	11	TO-220FP
STP10NM60ND	600	0.600	-	8	20	118	680	11	TO-220
STF8N60DM2(*)	600	0.600	-	8	13.5	80	188	4.7	TO-220FP
STD8N60DM2(*)	600	0.600	-	8	13.5	80	188	4.7	DPAK
STD10NM60ND	600	0.600	-	8	20	118	680	11	DPAK
STF10NM60ND	600	0.600	-	8	20	118	680	11	TO-220FP
STD5N60DM2(*)	600	1.550	-	3.5	8.6	70	133	3.8	DPAK

Note: \* coming soon

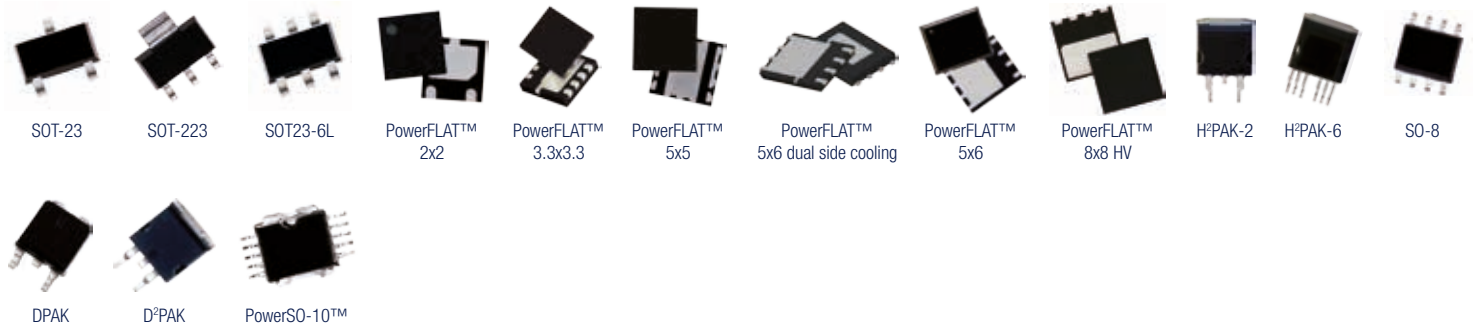


# Power MOSFETs: Nomenclature

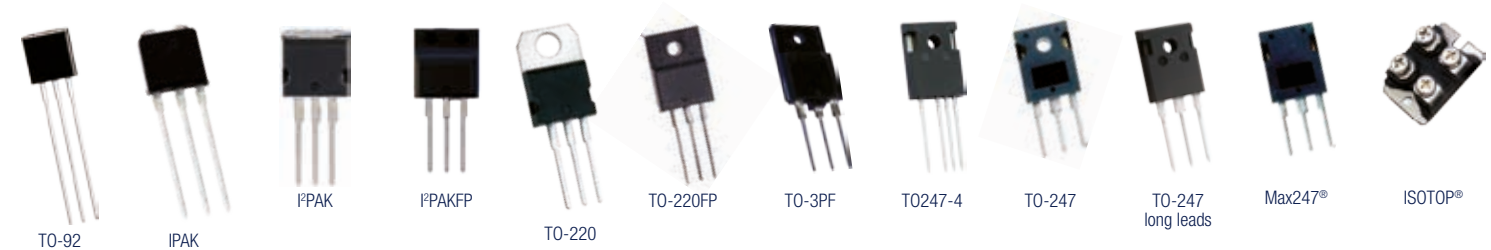


# Packages

## SURFACE MOUNTING PACKAGES



## THROUGH HOLE PACKAGES



Package images are not to scale



## Стандарт Электрон Связь

Мы молодая и активно развивающаяся компания в области поставок электронных компонентов. Мы поставляем электронные компоненты отечественного и импортного производства напрямую от производителей и с крупнейших складов мира.

Благодаря сотрудничеству с мировыми поставщиками мы осуществляем комплексные и плановые поставки широчайшего спектра электронных компонентов.

Собственная эффективная логистика и склад в обеспечивает надежную поставку продукции в точно указанные сроки по всей России.

Мы осуществляем техническую поддержку нашим клиентам и предпродажную проверку качества продукции. На все поставляемые продукты мы предоставляем гарантию .

Осуществляем поставки продукции под контролем ВП МО РФ на предприятия военно-промышленного комплекса России , а также работаем в рамках 275 ФЗ с открытием отдельных счетов в уполномоченном банке. Система менеджмента качества компании соответствует требованиям ГОСТ ISO 9001.

Минимальные сроки поставки, гибкие цены, неограниченный ассортимент и индивидуальный подход к клиентам являются основой для выстраивания долгосрочного и эффективного сотрудничества с предприятиями радиоэлектронной промышленности, предприятиями ВПК и научно-исследовательскими институтами России.

С нами вы становитесь еще успешнее!

### Наши контакты:

**Телефон:** +7 812 627 14 35

**Электронная почта:** [sales@st-electron.ru](mailto:sales@st-electron.ru)

**Адрес:** 198099, Санкт-Петербург,  
Промышленная ул, дом № 19, литера Н,  
помещение 100-Н Офис 331