

---

# Getting Started with the ATA5745/ATA5746 Evaluation Kit

## 1. Introduction

ATA5745/ATA5746 is a transparent receiver which can be applied to process the data for two different applications, tire pressure monitoring systems (TPMS) and remote keyless entry (RKE). The two systems can have a different data rate as well as modulation type. To handle different applications, ATA5745/ATA5746 can be switched very quickly between ASK and FSK modulation types, and, of course, between four different baud rate ranges. The ATA5745/ATA5746 Evaluation Kit was designed for evaluation purposes of the receiver.

The receiver can be evaluated without a microcontroller since there are eight switches implemented for setting the receiver. The board is assembled for an operating voltage of 3V. For operation with a 5V power supply, the on-board external circuitry of the receiver's power supply has to be changed (please refer to the datasheet for more information on this issue). The RF input is matched to 50Ω. This simplifies the verification of the input stage with standard RF instruments.

[Figure 1-1 on page 2](#) is a photo of an assembled board, [Figure 1-2 on page 2](#) shows the layout of the the top layer, and [Figure 1-3 on page 3](#) shows the allocation of the test pins (Jx, where x is an index) on the board. For each test pin there is a ground pin available in order to simplify measurement with an oscilloscope's probe. When measuring the clock signal, the load capacitance of the probe has to be taken to account. [Table 1-1 on page 3](#) shows the information important for measurement purposes. The bill of materials for the board is listed in [Table 1-4 on page 4](#).



---

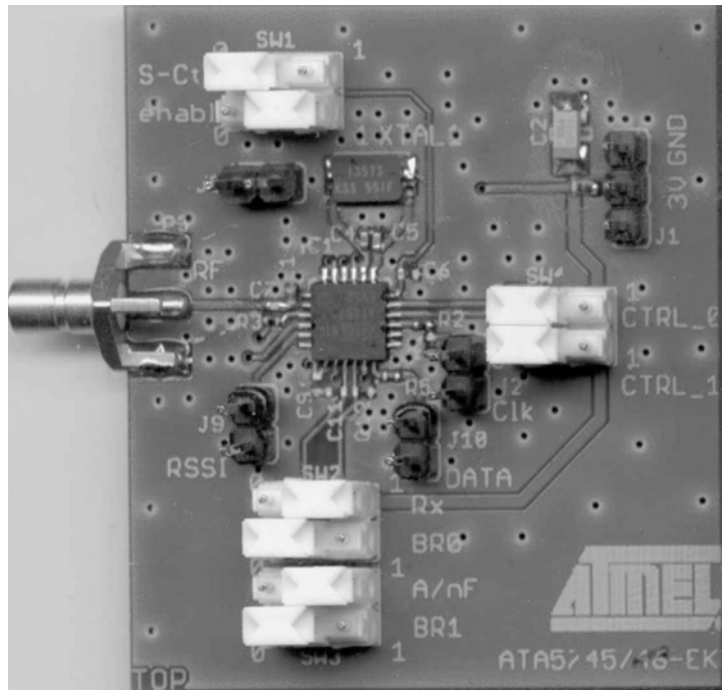
**ATA5745/  
ATA5746  
Evaluation Kit**

---

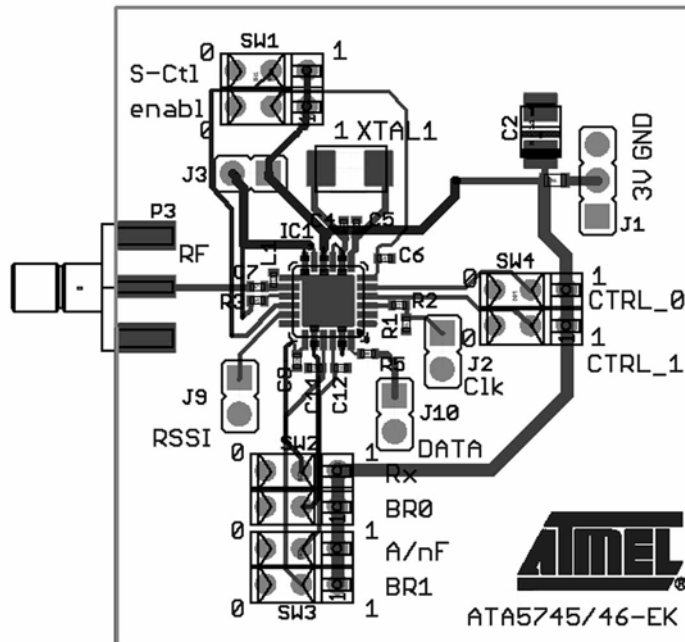
**Application Note**



**Figure 1-1.** Evaluation Board of the ATA5745/ATA5746



**Figure 1-2.** Top Layer Layout of the ATA5745/ATA5746

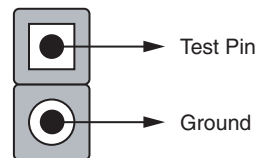


**Table 1-1.** Mapping of the Board Components and Designators to the Pins of ATA5745/ATA5746

Board Components	Designator and Description	The Corresponding Pin of the ATA5745/ATA5746
SW1	S-Ctl, <i>enabl</i>	SENSE_CTRL, ENABLE
SW2	Rx, BR0	RX, BR0
SW3	A/nF, BR1	ASK_NFSK, BR1
SW4	CTRL_0, CTRL_1	CLK_OUT_CTRL_0, CLK_OUT_CTRL_1
J1	Power supply of the board, $V_S = 3V$	
J2	Test pin to measure the clock signal. Connected to pin CLK_OUT over a 0Ω resistor (R2) (see <a href="#">Figure 1-3</a> )	CLK_OUT
J3	The connector between VS3 and VS5	VS5V, VS3V_AVCC
J9	Test pin to measure the RSSI signal (see <a href="#">Figure 1-3</a> )	RSSI
J10	Test pin to measure the demodulated data. Connected to pin DATA_OUT over a 0Ω resistor (R5) (see <a href="#">Figure 1-3</a> )	DATA_OUT

Note: The switches are double switches. One switch component (SWx) consists of two switches.

**Figure 1-3.** Allocation of the Row Connectors (Test Pins) for Measurement Assembly



The following steps need to be followed to start working with the evaluation board:

1. Activate the 3V power supply.
2. Set switches *enabl* and *Rx* to “1” in order to start the receiver in receiving mode.
3. Set switches *BR0* and *BR1* according to [Table 1-2](#) for the desired data rate to be processed by the receiver.

**Table 1-2.** The Receiver’s Bit Rate Depends on the Combination of *BR0* and *BR1*

BR1	BR0	BR_Range	Recommended Bit Rate (Manchester)
0	0	BR_Range0	1 kBit/s to 2.5 kBits/s
0	1	BR_Range1	2 kBits/s to 5 kBits/s
1	0	BR_Range2	4 kBits/s to 10 kBits/s
1	1	BR_Range3	8 kBits/s to 10 kBits/s (ASK) 8 kBits/s to 20 kBits/s (FSK)

4. Set switch *A/nF* as desired to set the modulation type of the receiver: “1” for ASK, or “0” for an FSK-modulated signal.
5. Set switch *S-Ctl* as desired for the sensitivity reduction's functionality. Set *S-Ctl* to LOW for normal sensitivity or HIGH for the sensitivity reduction functionality. The resistor on pin SENSE (R3) determines the value of the reduction. For more information, refer to the datasheet.
6. Set *CTRL\_0* and *CTRL\_1* as shown in [Table 1-3](#) for the frequency of the clock signal to be measured on test pin J2.

**Table 1-3.** The Functionality of the Pin CLOCK\_OUT Depending on the Logic Combination of the Pins CTRL\_0 and CTRL\_1

CTRL_1	CTRL_0	Function
0	0	Pin CLK_OUT is switched off
0	1	$f_{CLK\_OUT} = f_{XTO} / 3$
1	0	$f_{CLK\_OUT} = f_{XTO} / 6$
1	1	$f_{CLK\_OUT} = f_{XTO} / 12$

Note:  $f_{XTO}$  at 433 MHz = 13.57375 MHz,  $f_{XTO}$  at 315 MHz = 13.1433 MHz

**Table 1-4.** Bill of Materials of the ATA5745/ATA5746

Components	Pcs	315 MHz	433 MHz	Value	Tolerance	Material/Series	Housing	Manufacturer/ Distributor
IC1	1	x		ATA5746			QFN24	Atmel®
			x	ATA5745				
R2, R3, R5	4	x	x	0Ω			0402	Murata®
C2	1	x	x	4.7 μF				
C4, C5	2	x	x	18 pF			0402	
C51, C52, C53	3	x	x	10 nF			0402	
C7	1	x	x	2.2 pF		X7R	0402	
C54	1	x	x	15 nF		X7R	0402	
L1	1	x		68 nH	Q = 20	0402CS	0402	Coilcraft®
			x	36 nH	Q = 15	0402CS	0402	Coilcraft
XTAL1	1	x		13.1433 MHz			CX-53G	Kyocera® Kinseki
			x	13.57375 MHz				
SW1, SW2, SW3, SW4	4	x	x			JSK9-1G2-G0		ITW/PANCON - Heilind Electronics
J2, J3, J9, J10	4	x	x	Row connector		800-10-012-10-001	2 pins/ 0.1 in. pitch	CAB
J1	1	x	x	Row connector		800-10-012-10-001	3 pins/ 0.1 in. pitch	CAB
P3				SMB connector		Radiall®		Radiall
R1, C6, C9, C11, C12, C55, FB1	n.m.							



## Atmel Corporation

2325 Orchard Parkway  
San Jose, CA 95131, USA  
Tel: 1(408) 441-0311  
Fax: 1(408) 487-2600

## Regional Headquarters

### Europe

Atmel Sarl  
Route des Arsenaux 41  
Case Postale 80  
CH-1705 Fribourg  
Switzerland  
Tel: (41) 26-426-5555  
Fax: (41) 26-426-5500

### Asia

Room 1219  
Chinachem Golden Plaza  
77 Mody Road Tsimshatsui  
East Kowloon  
Hong Kong  
Tel: (852) 2721-9778  
Fax: (852) 2722-1369

### Japan

9F, Tonetsu Shinkawa Bldg.  
1-24-8 Shinkawa  
Chuo-ku, Tokyo 104-0033  
Japan  
Tel: (81) 3-3523-3551  
Fax: (81) 3-3523-7581

## Atmel Operations

### Memory

2325 Orchard Parkway  
San Jose, CA 95131, USA  
Tel: 1(408) 441-0311  
Fax: 1(408) 436-4314

### Microcontrollers

2325 Orchard Parkway  
San Jose, CA 95131, USA  
Tel: 1(408) 441-0311  
Fax: 1(408) 436-4314

La Chantrerie  
BP 70602  
44306 Nantes Cedex 3, France  
Tel: (33) 2-40-18-18-18  
Fax: (33) 2-40-18-19-60

### ASIC/ASSP/Smart Cards

Zone Industrielle  
13106 Rousset Cedex, France  
Tel: (33) 4-42-53-60-00  
Fax: (33) 4-42-53-60-01

1150 East Cheyenne Mtn. Blvd.  
Colorado Springs, CO 80906, USA  
Tel: 1(719) 576-3300  
Fax: 1(719) 540-1759

Scottish Enterprise Technology Park  
Maxwell Building  
East Kilbride G75 0QR, Scotland  
Tel: (44) 1355-803-000  
Fax: (44) 1355-242-743

### RF/Automotive

Theresienstrasse 2  
Postfach 3535  
74025 Heilbronn, Germany  
Tel: (49) 71-31-67-0  
Fax: (49) 71-31-67-2340

1150 East Cheyenne Mtn. Blvd.  
Colorado Springs, CO 80906, USA  
Tel: 1(719) 576-3300  
Fax: 1(719) 540-1759

### Biometrics/Imaging/Hi-Rel MPU/ High-Speed Converters/RF Datacom

Avenue de Rochepleine  
BP 123  
38521 Saint-Egreve Cedex, France  
Tel: (33) 4-76-58-30-00  
Fax: (33) 4-76-58-34-80

---

## Literature Requests

[www.atmel.com/literature](http://www.atmel.com/literature)

**Disclaimer:** The information in this document is provided in connection with Atmel products. No license, express or implied, by estoppel or otherwise, to any intellectual property right is granted by this document or in connection with the sale of Atmel products. **EXCEPT AS SET FORTH IN ATMEL'S TERMS AND CONDITIONS OF SALE LOCATED ON ATMEL'S WEB SITE, ATMEL ASSUMES NO LIABILITY WHATSOEVER AND DISCLAIMS ANY EXPRESS, IMPLIED OR STATUTORY WARRANTY RELATING TO ITS PRODUCTS INCLUDING, BUT NOT LIMITED TO, THE IMPLIED WARRANTY OF MERCHANTABILITY, FITNESS FOR A PARTICULAR PURPOSE, OR NON-INFRINGEMENT. IN NO EVENT SHALL ATMEL BE LIABLE FOR ANY DIRECT, INDIRECT, CONSEQUENTIAL, PUNITIVE, SPECIAL OR INCIDENTAL DAMAGES (INCLUDING, WITHOUT LIMITATION, DAMAGES FOR LOSS OF PROFITS, BUSINESS INTERRUPTION, OR LOSS OF INFORMATION) ARISING OUT OF THE USE OR INABILITY TO USE THIS DOCUMENT, EVEN IF ATMEL HAS BEEN ADVISED OF THE POSSIBILITY OF SUCH DAMAGES.** Atmel makes no representations or warranties with respect to the accuracy or completeness of the contents of this document and reserves the right to make changes to specifications and product descriptions at any time without notice. Atmel does not make any commitment to update the information contained herein. Unless specifically provided otherwise, Atmel products are not suitable for, and shall not be used in, automotive applications. Atmel's products are not intended, authorized, or warranted for use as components in applications intended to support or sustain life.

© 2006 Atmel Corporation. All rights reserved. Atmel®, logo and combinations thereof, Everywhere You Are® and others are registered trademarks or trademarks of Atmel Corporation or its subsidiaries. Other terms and product names may be trademarks of others.



## Стандарт Электрон Связь

Мы молодая и активно развивающаяся компания в области поставок электронных компонентов. Мы поставляем электронные компоненты отечественного и импортного производства напрямую от производителей и с крупнейших складов мира.

Благодаря сотрудничеству с мировыми поставщиками мы осуществляем комплексные и плановые поставки широчайшего спектра электронных компонентов.

Собственная эффективная логистика и склад в обеспечивает надежную поставку продукции в точно указанные сроки по всей России.

Мы осуществляем техническую поддержку нашим клиентам и предпродажную проверку качества продукции. На все поставляемые продукты мы предоставляем гарантию .

Осуществляем поставки продукции под контролем ВП МО РФ на предприятия военно-промышленного комплекса России , а также работаем в рамках 275 ФЗ с открытием отдельных счетов в уполномоченном банке. Система менеджмента качества компании соответствует требованиям ГОСТ ISO 9001.

Минимальные сроки поставки, гибкие цены, неограниченный ассортимент и индивидуальный подход к клиентам являются основой для выстраивания долгосрочного и эффективного сотрудничества с предприятиями радиоэлектронной промышленности, предприятиями ВПК и научно-исследовательскими институтами России.

С нами вы становитесь еще успешнее!

### Наши контакты:

**Телефон:** +7 812 627 14 35

**Электронная почта:** [sales@st-electron.ru](mailto:sales@st-electron.ru)

**Адрес:** 198099, Санкт-Петербург,  
Промышленная ул, дом № 19, литера Н,  
помещение 100-Н Офис 331