

DS28C40 Evaluation System Lite Version

Evaluates: DS28C40

General Description

The DS28C40 evaluation system (EV system) provides the hardware and software necessary to exercise the features of the DS28C40. The EV system consists of five DS28C40 devices in a 10-pin TDFN package, a DS9121CQ+ evaluation TDFN socket board, and a DS9481P-300# USB-to-I²C/1-Wire[®] adapter. The evaluation software runs under Windows[®] 10, Windows 8, and Windows 7 operating systems, both 64- and 32-bit versions. It provides a handy user interface to exercise the features of the DS28C40.

Features

- Demonstrates the Features of the DS28C40 DeepCover Secure Authenticator
- Logs 1-Wire/I²C Communication to Aid Firmware Designers Understanding of DS28C40
- 1-Wire/I²C USB Adapter Creates a Virtual COM Port on Any PC

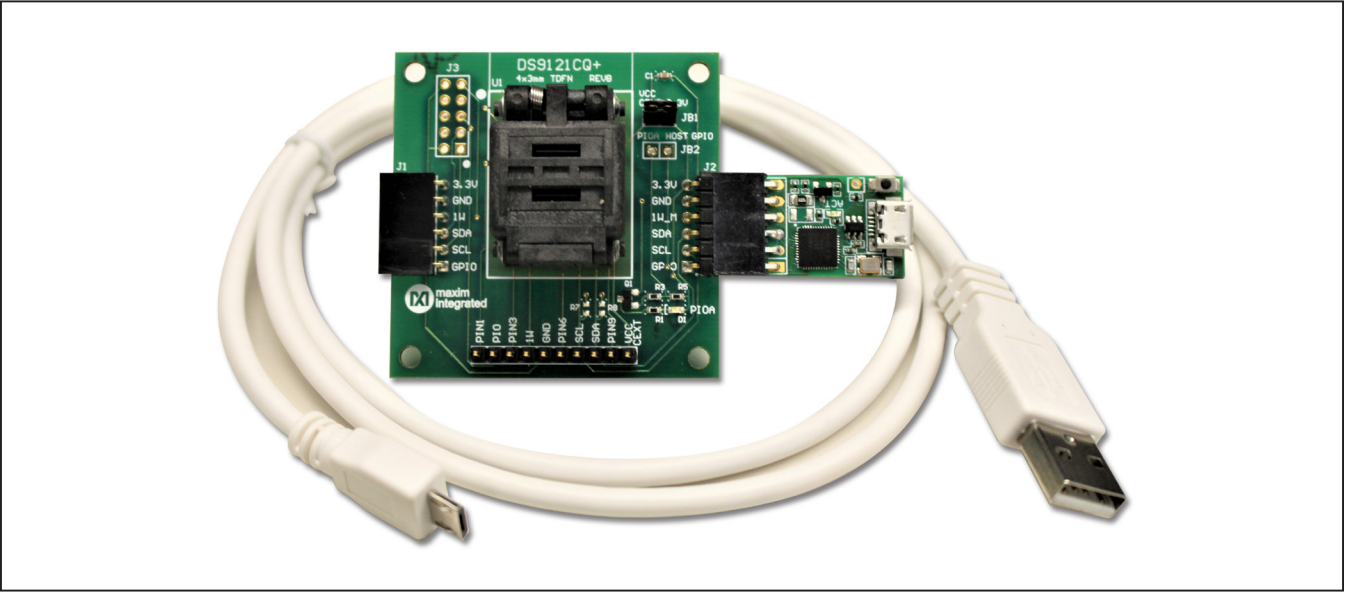
- Fully Compliant with USB Specification v2.0
- Software Runs on Windows 10, Windows 8, and Windows 7 for Both 64- and 32-Bit Versions
- 3.3V \pm 3% I²C Operating Voltage
- Convenient On-Board Test Points, TDFN Socket
- Evaluation Software Available by Request

EV Kit Contents

QTY	DESCRIPTION
5	DS28C40Q+ DeepCover secure authenticator with (10 TDFN)
1	DS9121CQ+ socket board (10 TDFN)
1	DS9481P-300# USB to 1W/I ² C Adapter
1	USB Type-A to USB Mini Type-B cable

Ordering Information appears at end of data sheet.

DS28C40 EV System with a USB Cable



DeepCover is a registered trademark of Maxim Integrated Products, Inc.
Windows is registered trademarks of Microsoft Corp.
Windows is a registered trademark and registered service mark of Microsoft Corporation.

DS28C40 Evaluation System Lite Version

Evaluates: DS28C40

Quick Start

This section is intended to give the DS28C40 evaluator a list of recommended equipment and instructions on how to set up the Windows-based computer for the evaluation software.

Recommended Equipment

- DS9481P-300# USB to 1W/I²C Adapter
- DS9121CQ+ TDFN socket board
- DS28C40Q+ (five devices included)
- USB Type A-to-USB Micro-Type B cable (included)
- Computer with a Windows 10, Windows 8, or Windows 7 operating system (64- or 32-bit) and a spare USB 2.0 or higher port
- DS28C40 EV kit software. If needed go to the Maxim website and search for the DS28C40 EV kit.

Click the **Design Resources** link. Then click the **DS28C40EVKIT Software Lite** link to download the **DS28C40_Evaluation_Kit_Lite_Version_Setup_V1_2_0.zip** file or newer version software.

Note: In the following sections, EV kit software related items are identified in **bold**. Windows operating system related items are identified in **bold and underline**.

Hardware Setup and Driver Installation Quick Start

The following steps were performed on a Windows 7 PC to setup the DS28C40 EV kit hardware/software:

- 1) Obtain and unpack **DS28C40_Evaluation_Kit_Lite_Version_Setup_V1_2_0.zip** file or newer version.
- 2) In a file viewer, double click on the **DS28C40_Evaluation_Kit_Lite_Version_Setup_V1_2_0** to begin the installation.

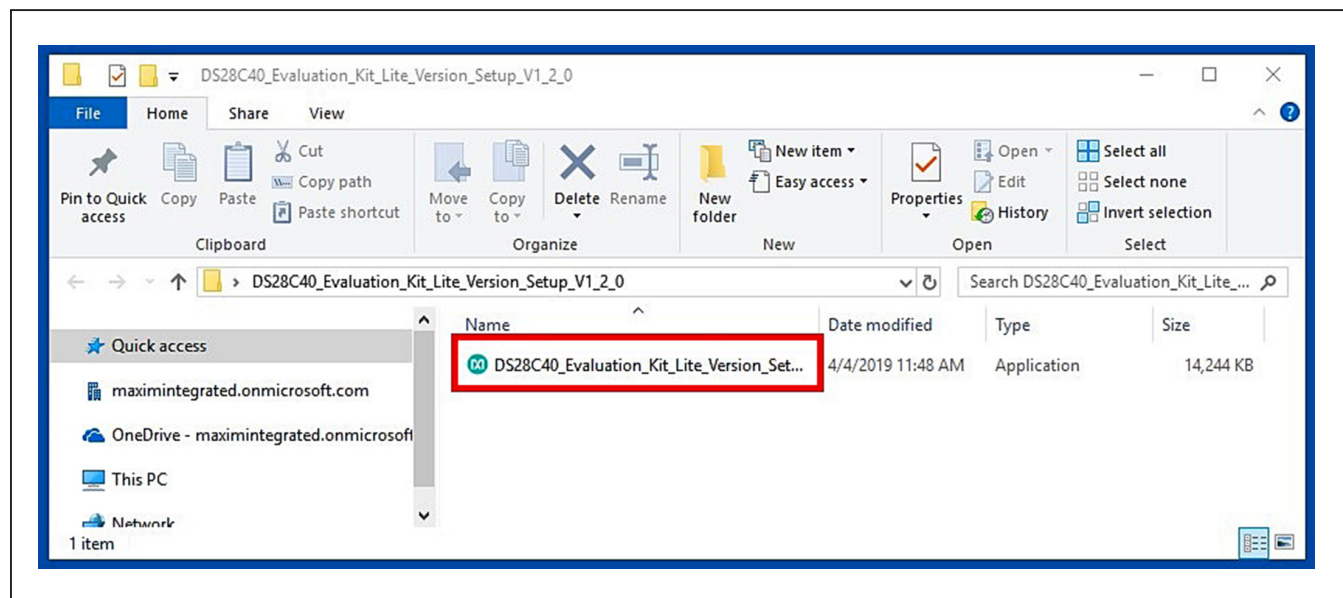


Figure 1. File Viewer

DS28C40 Evaluation System Lite Version

Evaluates: DS28C40

- 3) The setup wizard opens. Click on **Next** (Figure 2):
- 4) Click **Next** (Figure 3) to install to the default folder.

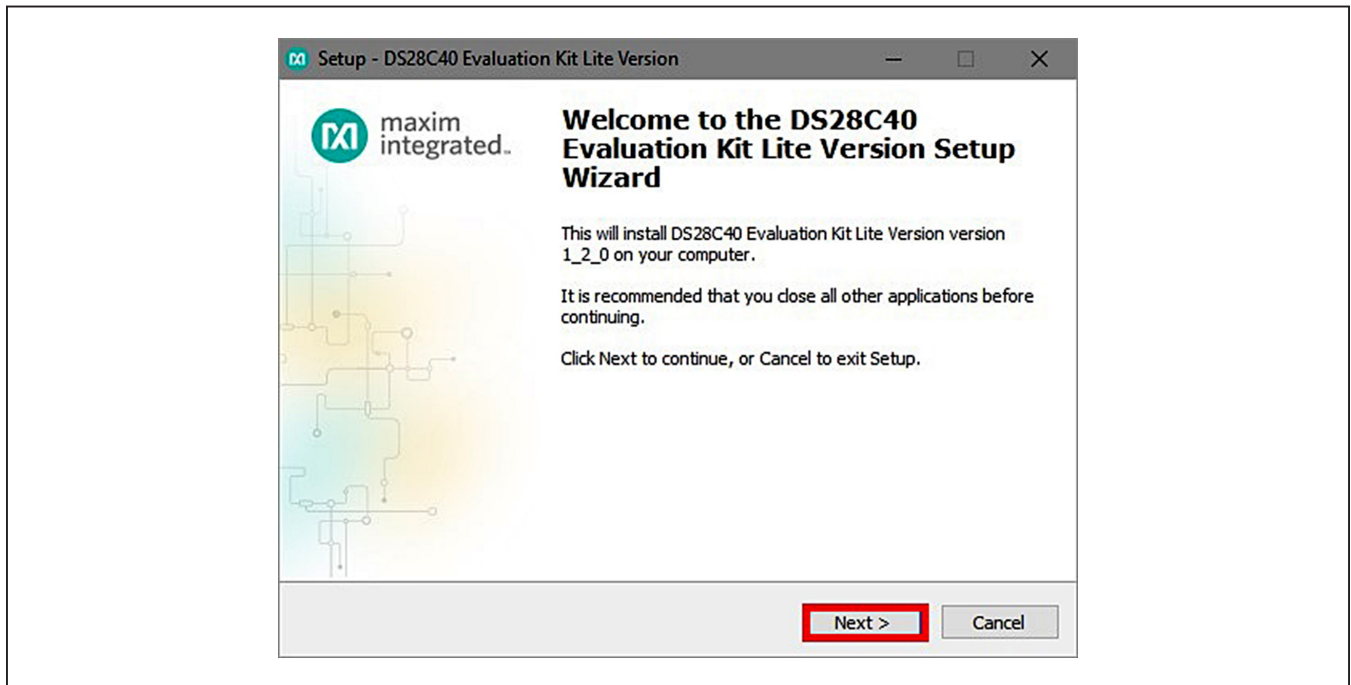


Figure 2. DS28C40 Setup Wizard

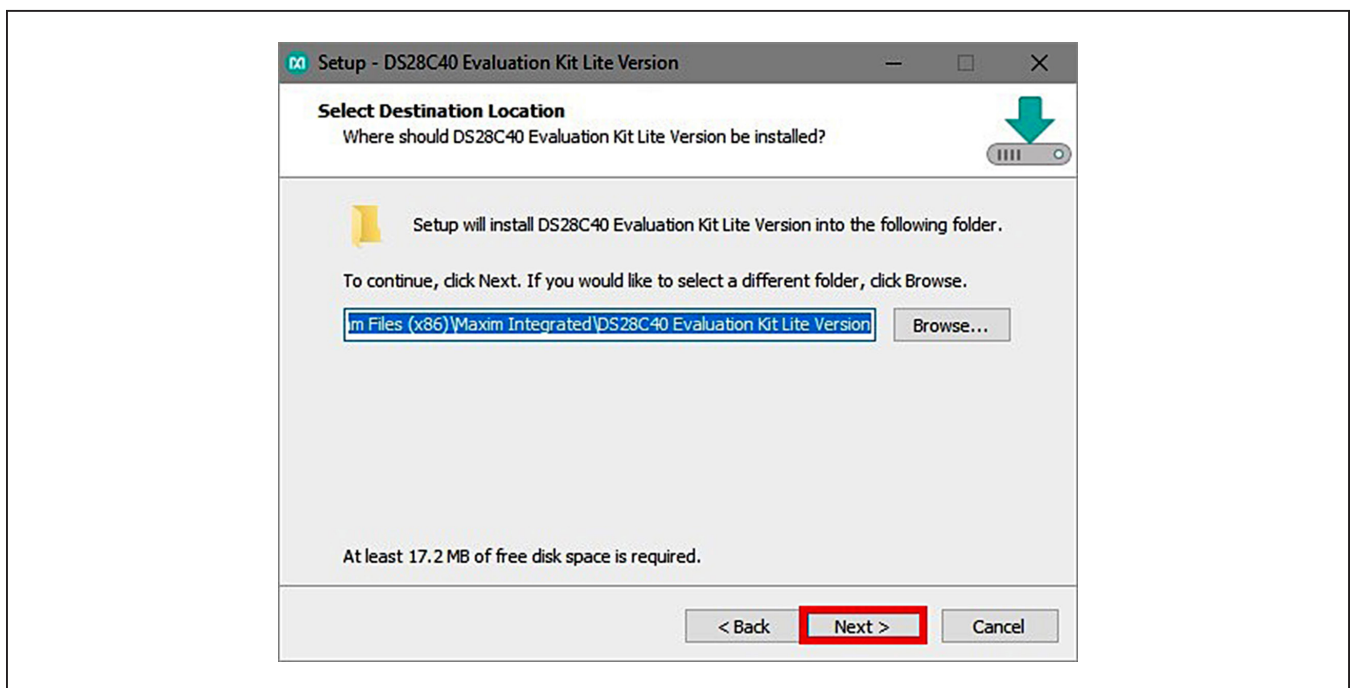


Figure 3. Install Folder Location

- 5) Click **Next** to install shortcuts to the default folder (Figure 4).
- 6) Unplug any Maxim adapter and click on **Next** (Figure 5) with the default settings checked. This action installs the DS9481P-300 driver that is needed to communicate through the USB by a virtual COM port.

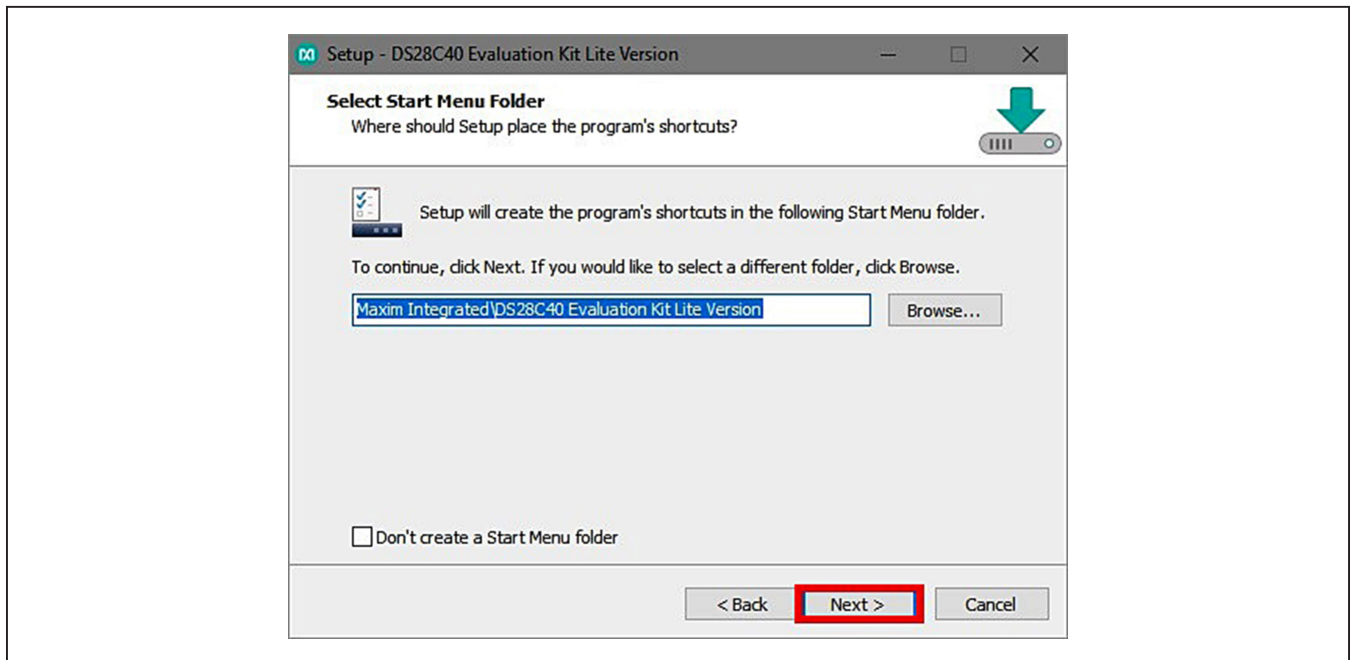


Figure 4. Program Shortcuts Location

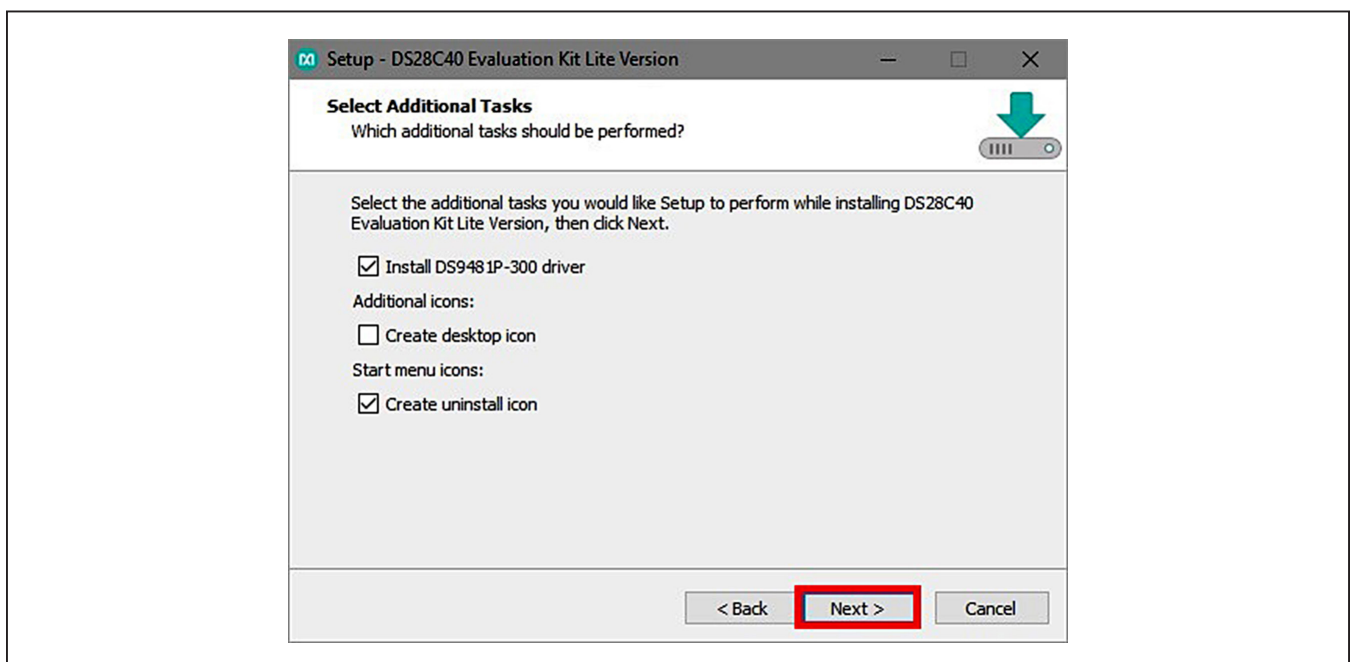


Figure 5. Select to Install the Driver

- 7) Next click on **Install** (Figure 6). A new window pops up to show progress of the installation.
- 8) Click on **Next** (Figure 7) when the **Device Driver Installation Wizard** appears.

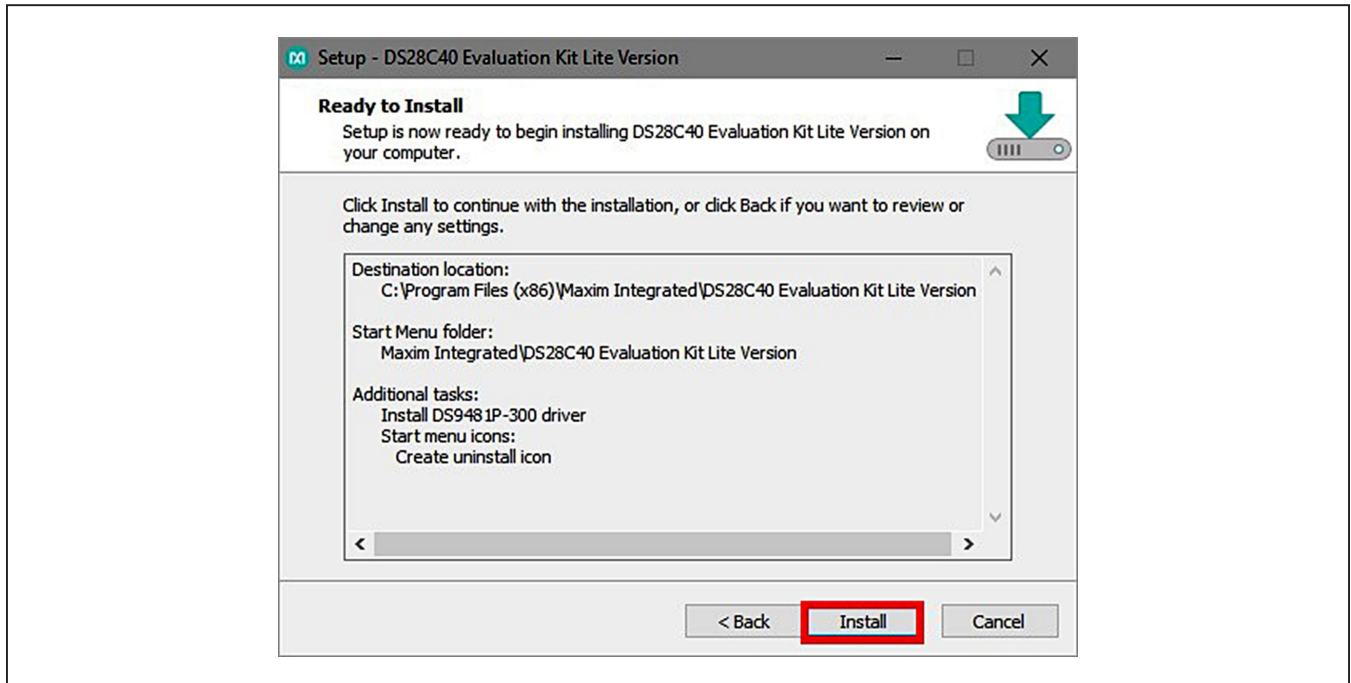


Figure 6. Ready to Install

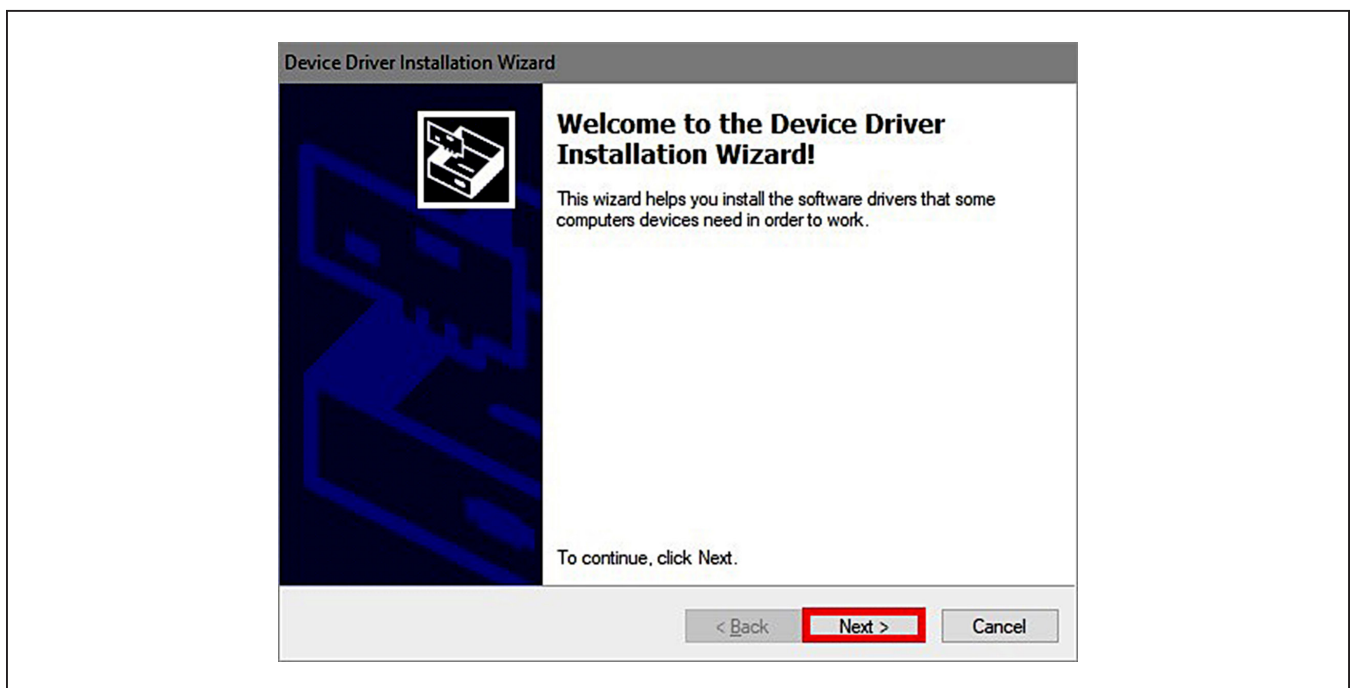


Figure 7. Device Driver

- 9) Click on **Finish** (Figure 8) to close the final window confirming the driver was installed correctly.
- 10) Now that the driver is installed, connect the hardware by doing the following:
 - a) Open the socket and insert a DS28C40 into one of the cavities, as shown in Figure 9. **Note:** The plus (+) on the package must be on aligned with the top of the marker in the socket.
 - b) Close the clamshell socket.
 - c) Connect the DS9121CQ J2, 10-pin male plug, into the DS9481P-300#, 10-pin female socket (Figure 10).
 - d) For the DS9121CQ+, insert jumper JB1 to use VCC (Figure 10).
 - e) Plug-in the DS9481P-300# using USB Type-A to USB Micro Type-B cable into the PC.

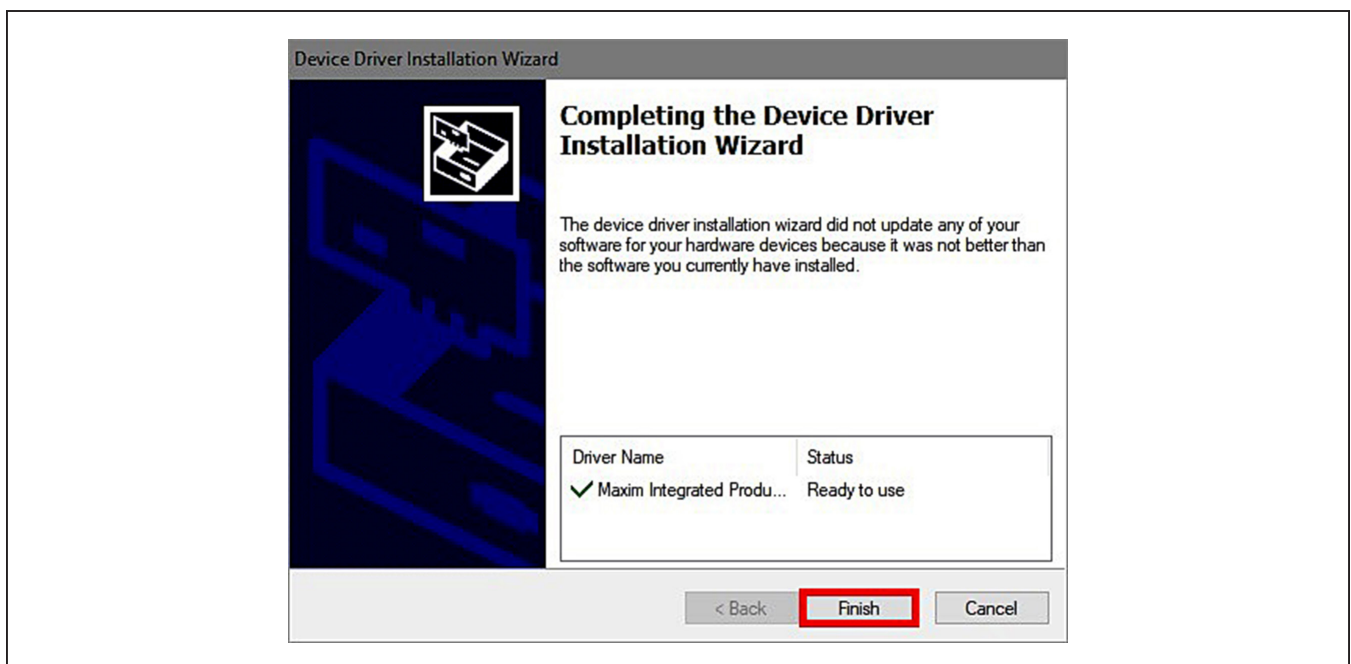


Figure 8. Device Driver Installed Finished

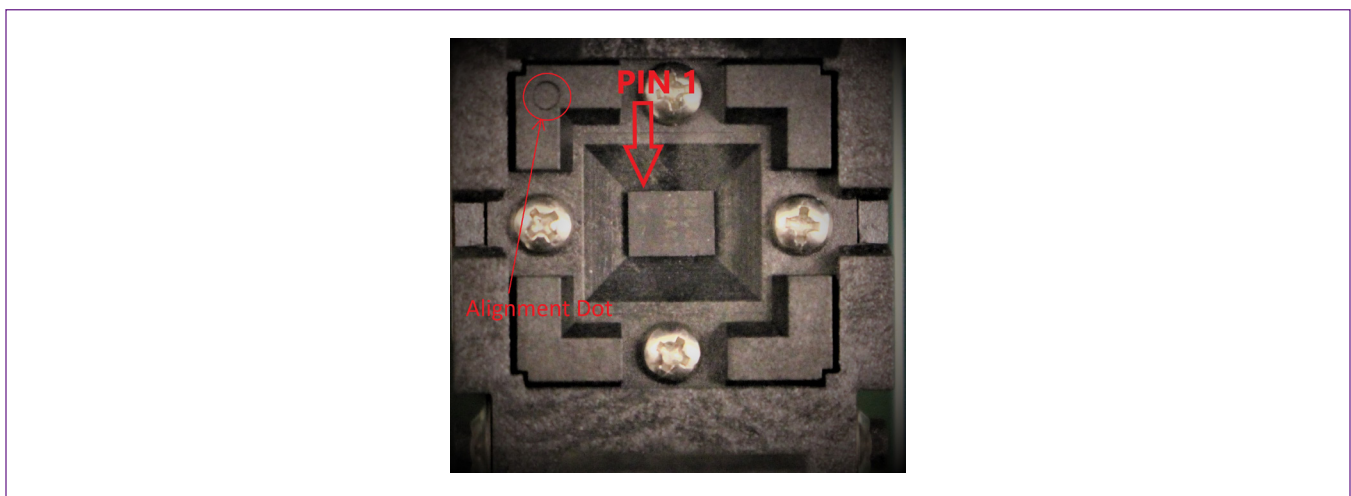


Figure 9. Orientation of the DS28C40 in the Clamshell Socket

DS28C40 Evaluation System Lite Version

Evaluates: DS28C40

11) Click on **Finish** (Figure 11) to close the final window confirming the software was installed correctly.

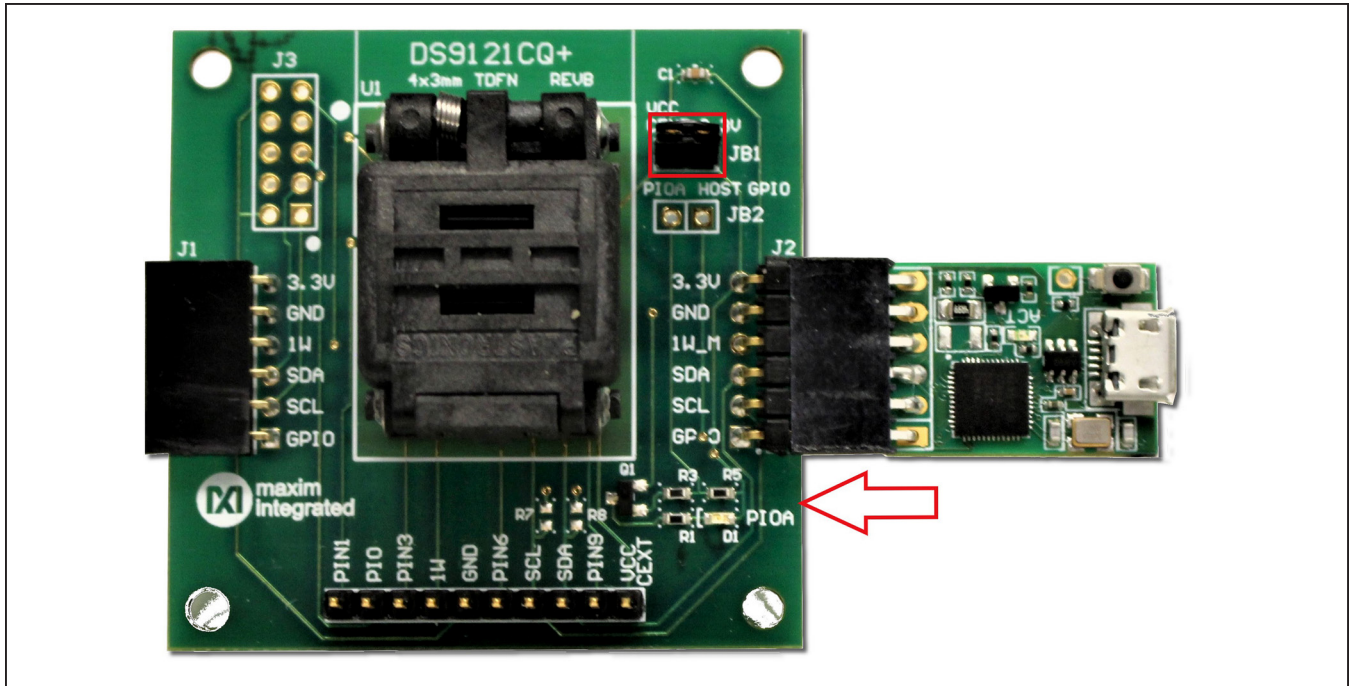


Figure 10. DS9481QA-300 and DS9121CQ

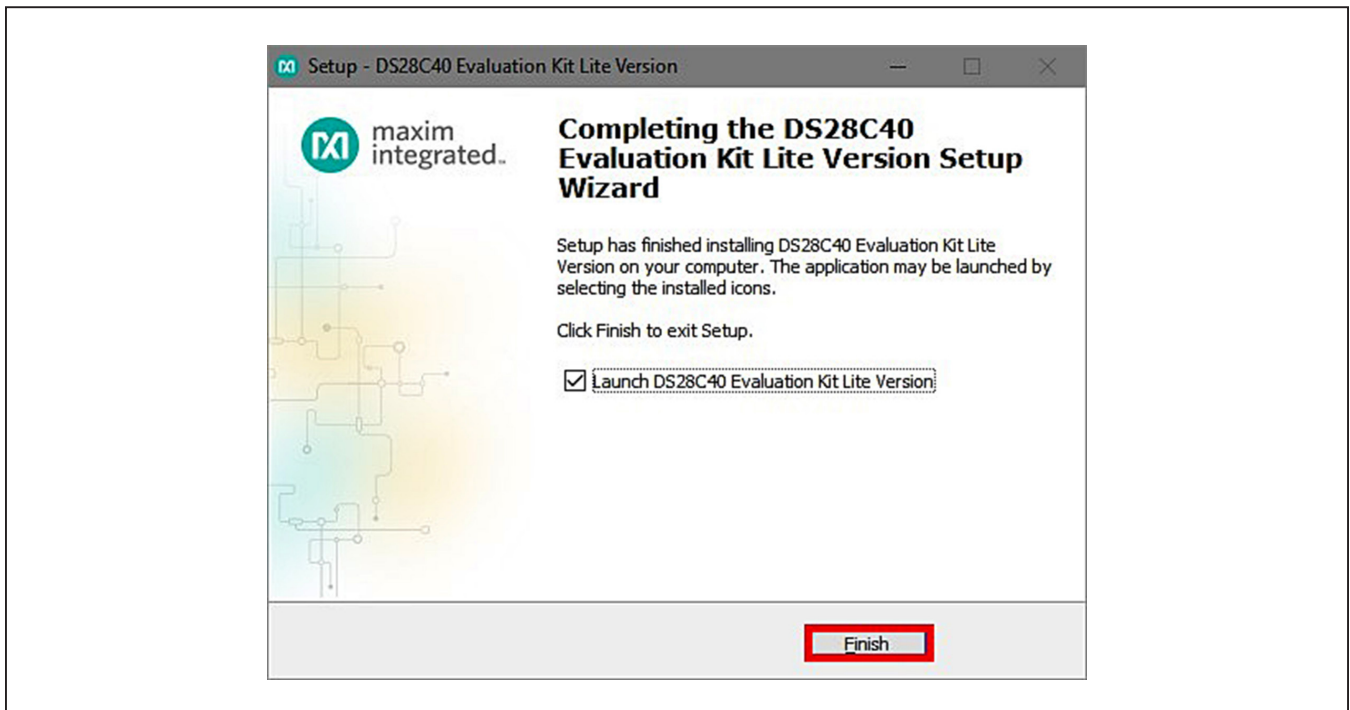


Figure 11. Software Installation Finished

12) The DS28C40 EV kit program now opens and connects to the DS9481P-300 COM port. This can be verified in the lower right corner of the window as shown in [Figure 12](#).

Available Options

The DS28C40 EV Kit Lite Program is designed as a usage example to show step by step how to use the

DS28C40 device. This version includes options to write, read, and run a compute authentication page using SHA2 or ECDSA. To access the full potential of the DS28C40, request the full version available under NDA request.

The GUI displays all the I²C sequences for each step performed to assist the firmware engineer.

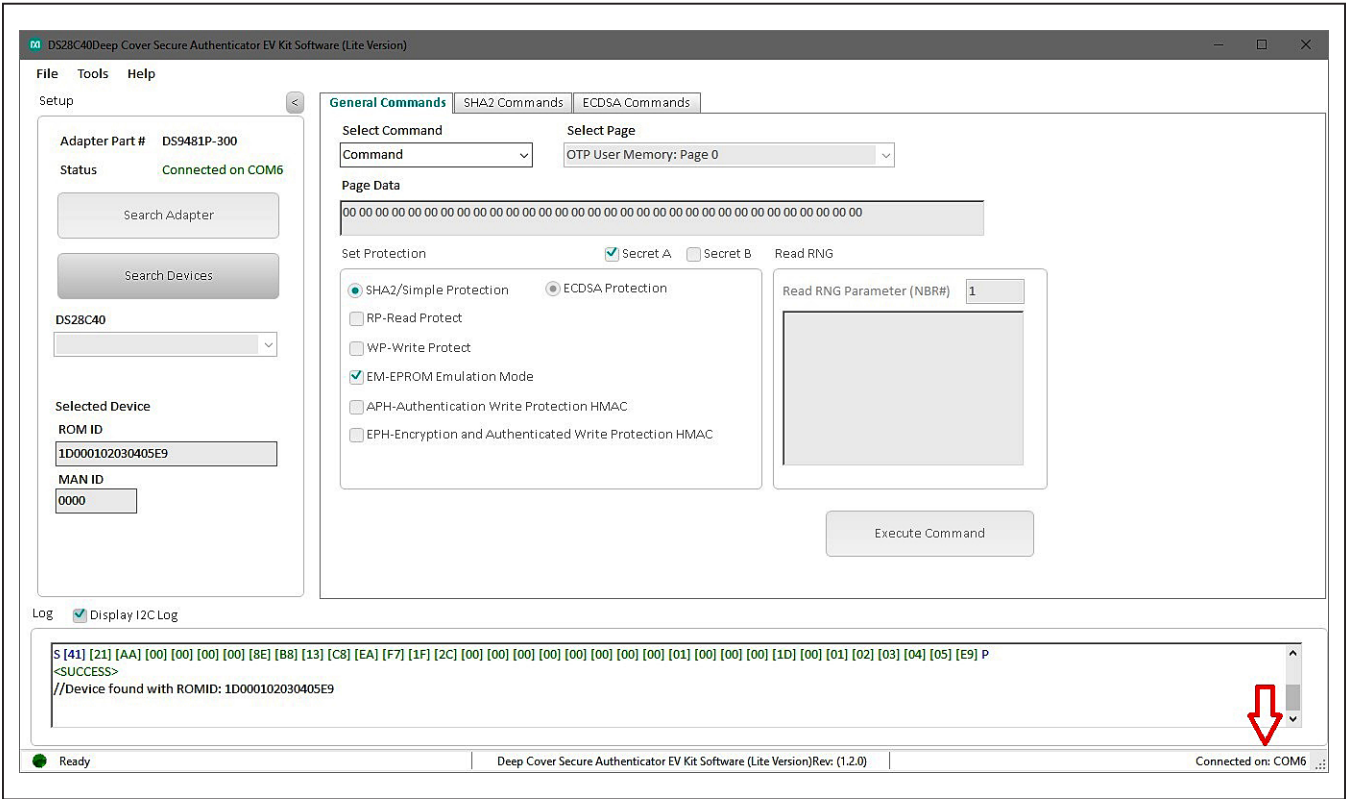


Figure 12. DS28C40 EV Kit Program (Default View upon Opening)

Usage Example—Feature Write Memory and Read Memory

- 1) Select the **General Commands** tab (Figure 13).
- 2) Select the **Write Memory** command from the combo box selection (Figure 13).

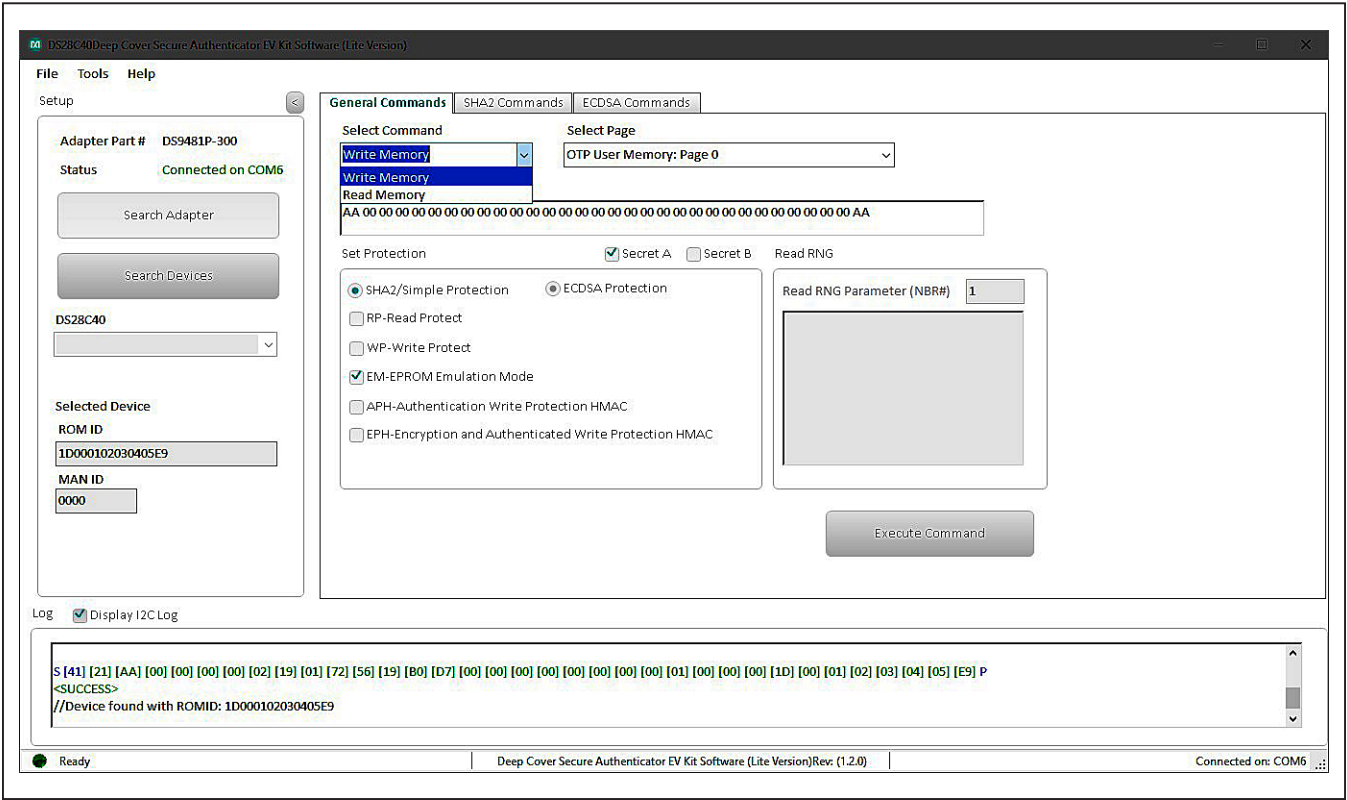


Figure 13. Selecting Command

[illegible]

Figure 14. Write Data

4) Select the page for writing (Figure 15).

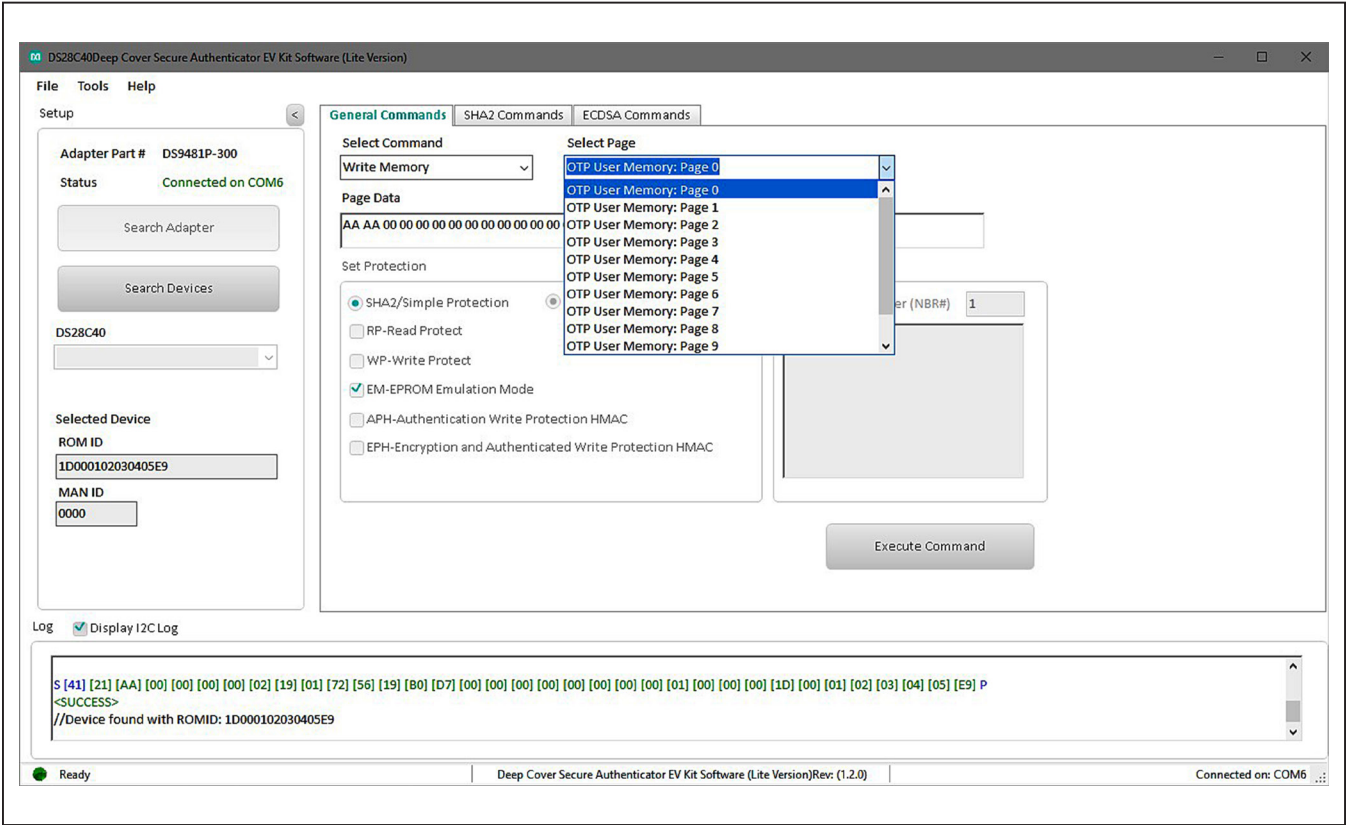


Figure 15. Select Page

- 5) Click the **Execute Command** button ([Figure 16](#)). The I2C communication is displayed on the **Log** window and aids to understand how the command is executed.
- 6) To perform a memory read, in the **General Commands** tab, select the command from the **Select Command** drop-down menu ([Figure 13](#)).
- 7) From the **Select Page** drop-down menu, select the desired page to read ([Figure 15](#)).
- 8) Click the **Execute Command** button ([Figure 16](#)).

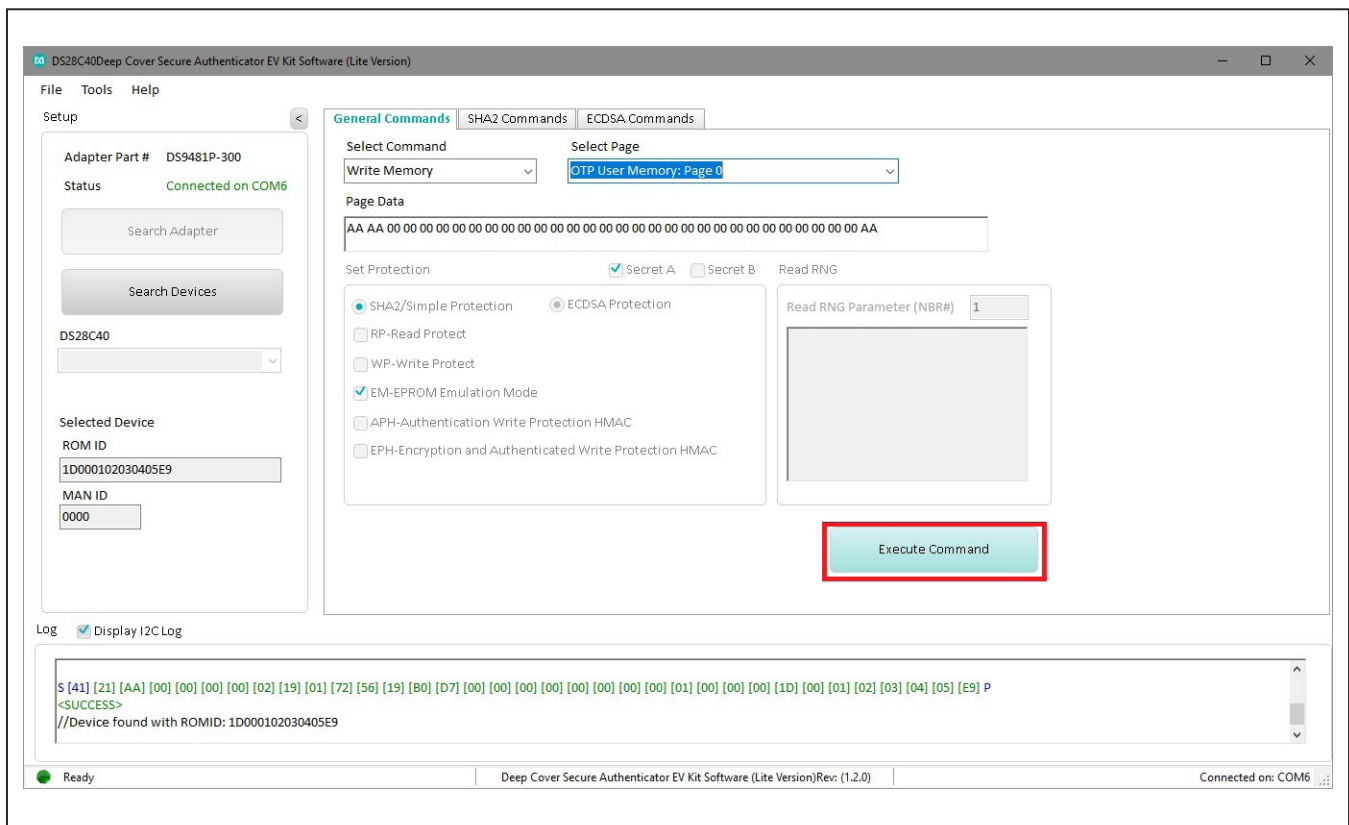


Figure 16. Execute Command

Usage Example—SHA2 Compute and Read Page Authentication

- 1) Under the **General Commands** tab, in the **Select Command** drop-down menu, select **Write Memory** (Figure 13).
- 2) Select the Secret A or B from **Select Page** drop-down menu for writing (Figure 17).
- 3) Write the desired secret on the **Page Data** text box and click **Execute Command** button (Figure 18).
- 4) Select the **SHA2 Commands** tab.
- 5) Select the **Compute and Read Page Authentication** command from the **Select Command** drop-down menu selection (Figure 19).

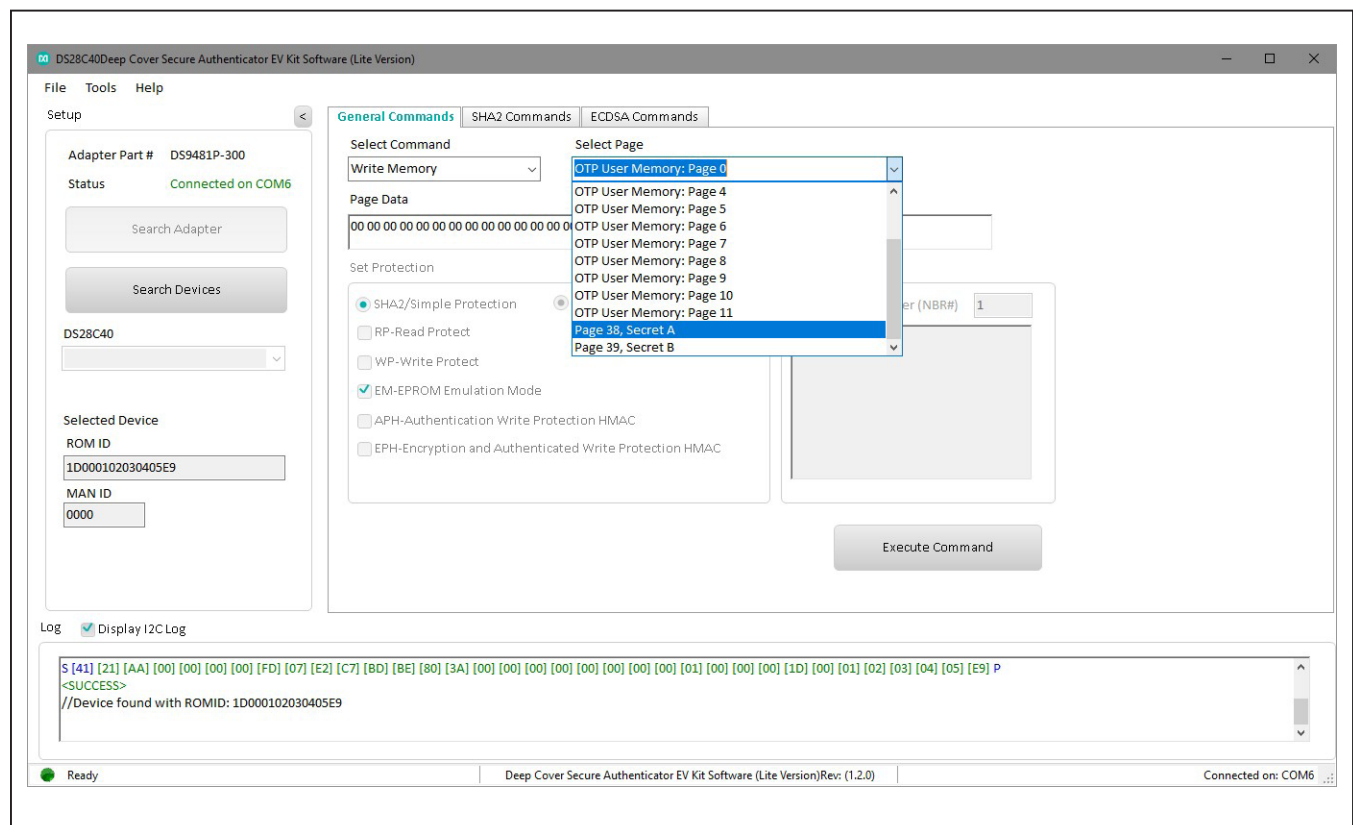


Figure 17. Selecting SHA2 Command

Evaluates: DS28C40



6) From the **Select Page** drop-down menu, select a page to execute the command (Figure 20).

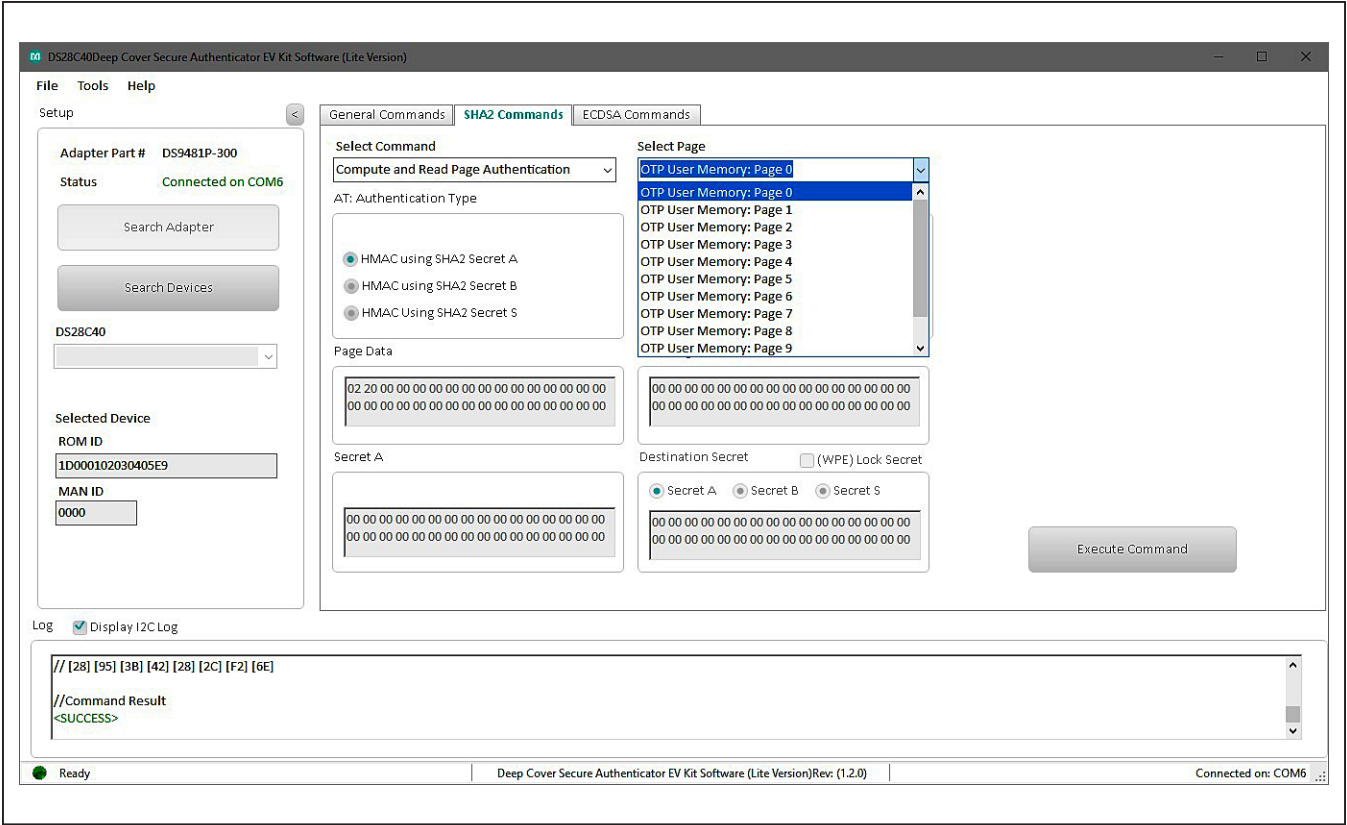


Figure 20. Select Page

7) In the **AT: Authentication Type** combo box, select a secret to compute the HMAC on selected page ([Figure 21](#)).

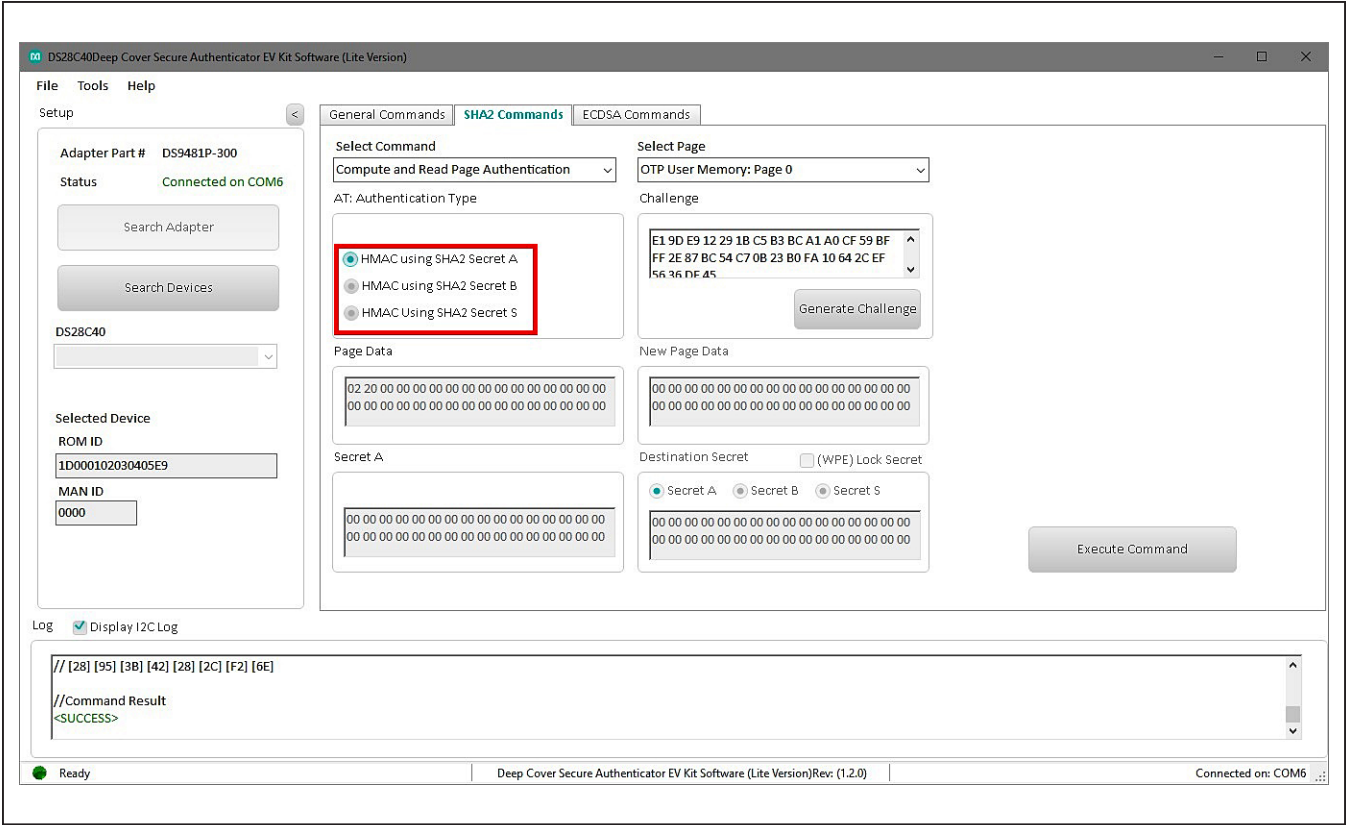


Figure 21. Select Secret

8) Click the **Generate Challenge** button to create a random challenge for command ([Figure 22](#)).

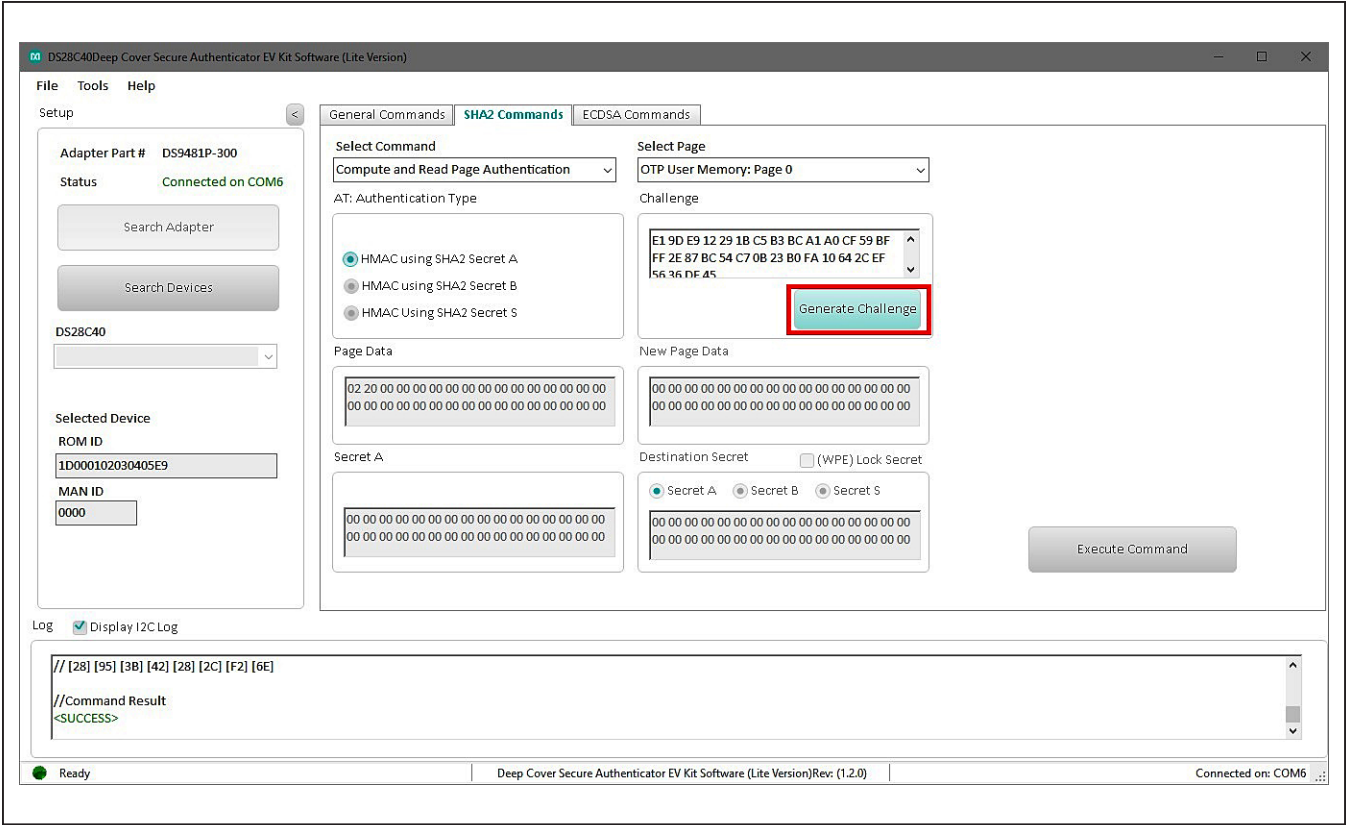


Figure 22. Generate Challenge

- 9) Click the **Execute Command** button to run the sequence (Figure 23). The command result is displayed on the **Log** box.

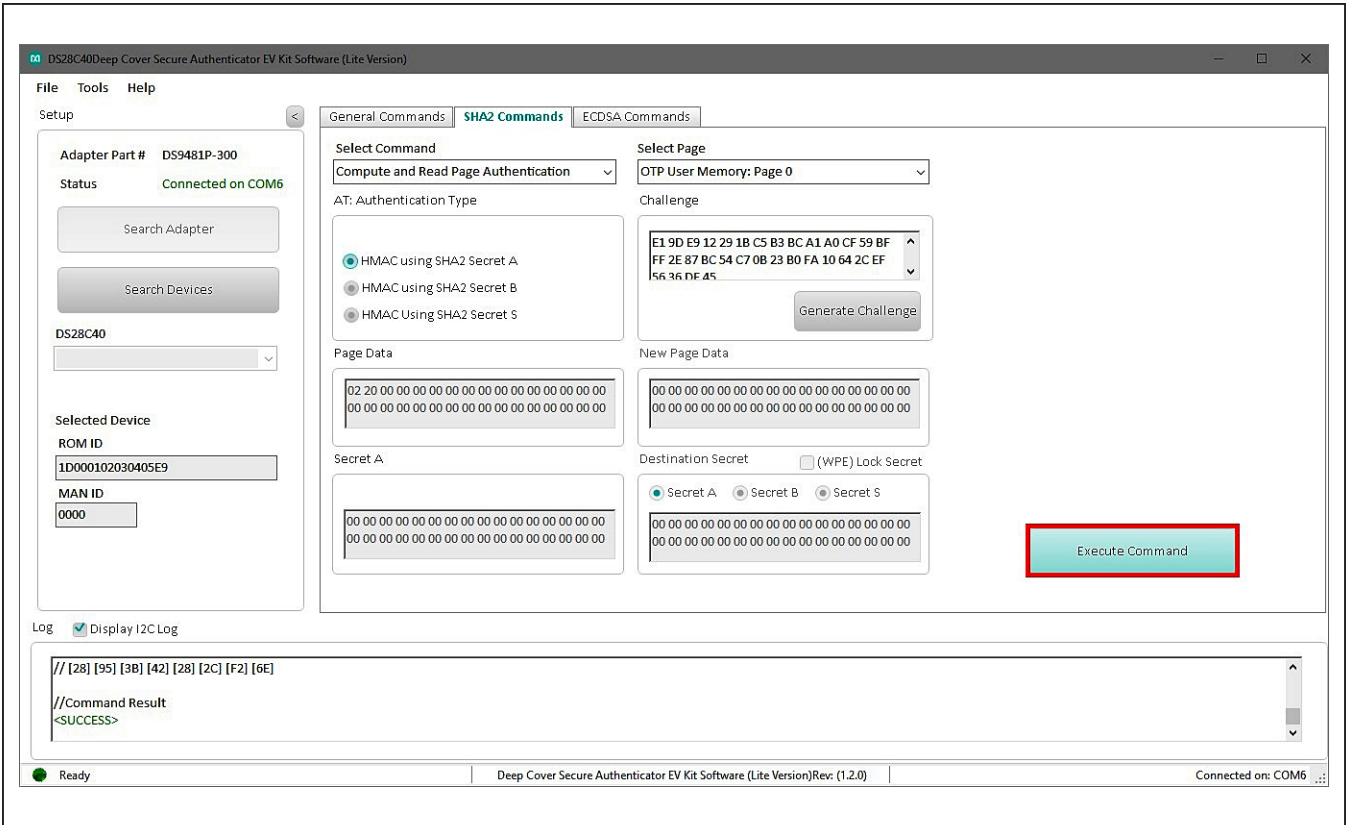


Figure 23. Execute Command

Usage Example—ECDSA Compute and Read Page Authentication

- 1) Select the **ECDSA Commands** tab (Figure 24).
- 2) From the **Select Command** drop-down menu, select the **Generate ECC-256 Key Pair** and select the desired **Public/Private Key** from the **Key Selection** combo box (Figure 24).

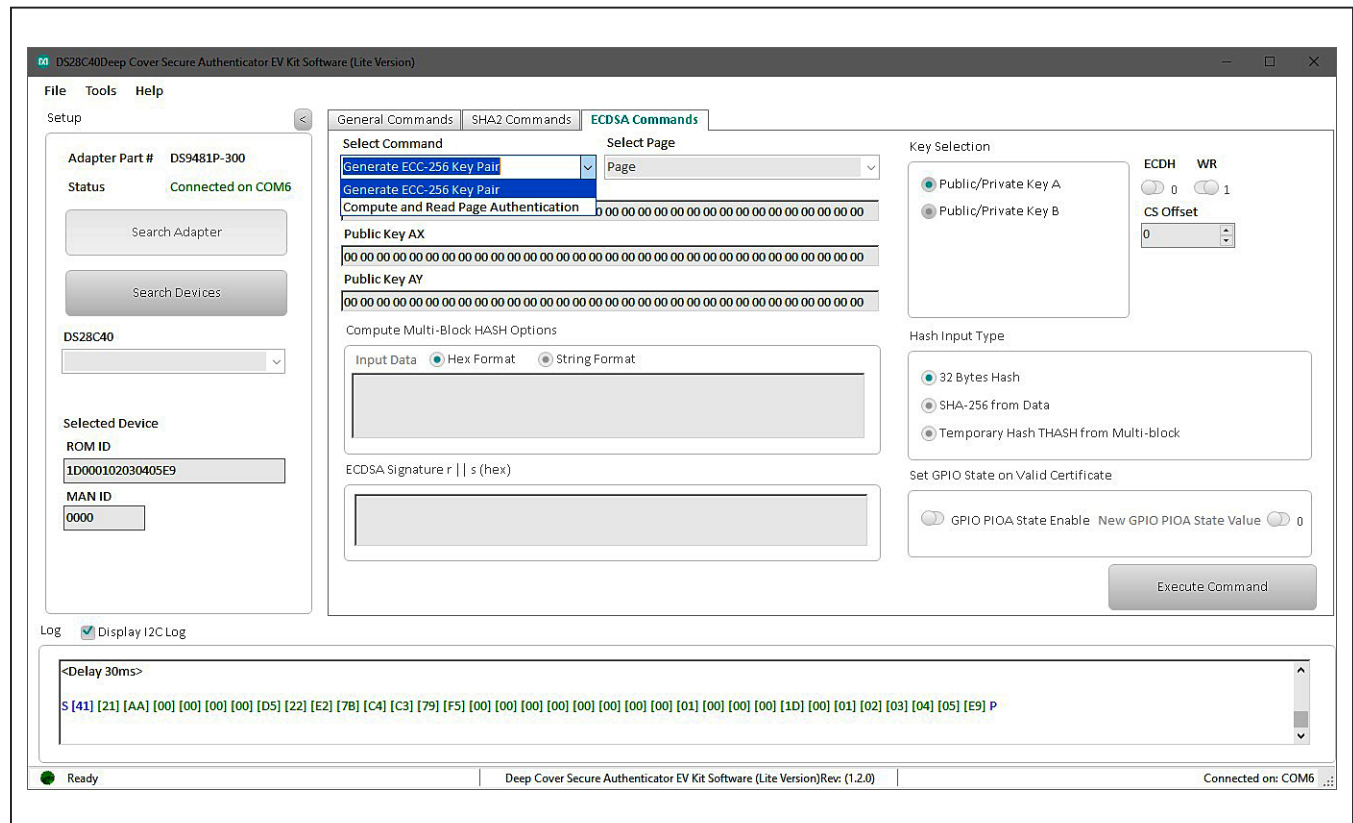


Figure 24. Generate ECC Key pair

3) Click the **Execute Command** button (Figure 25).

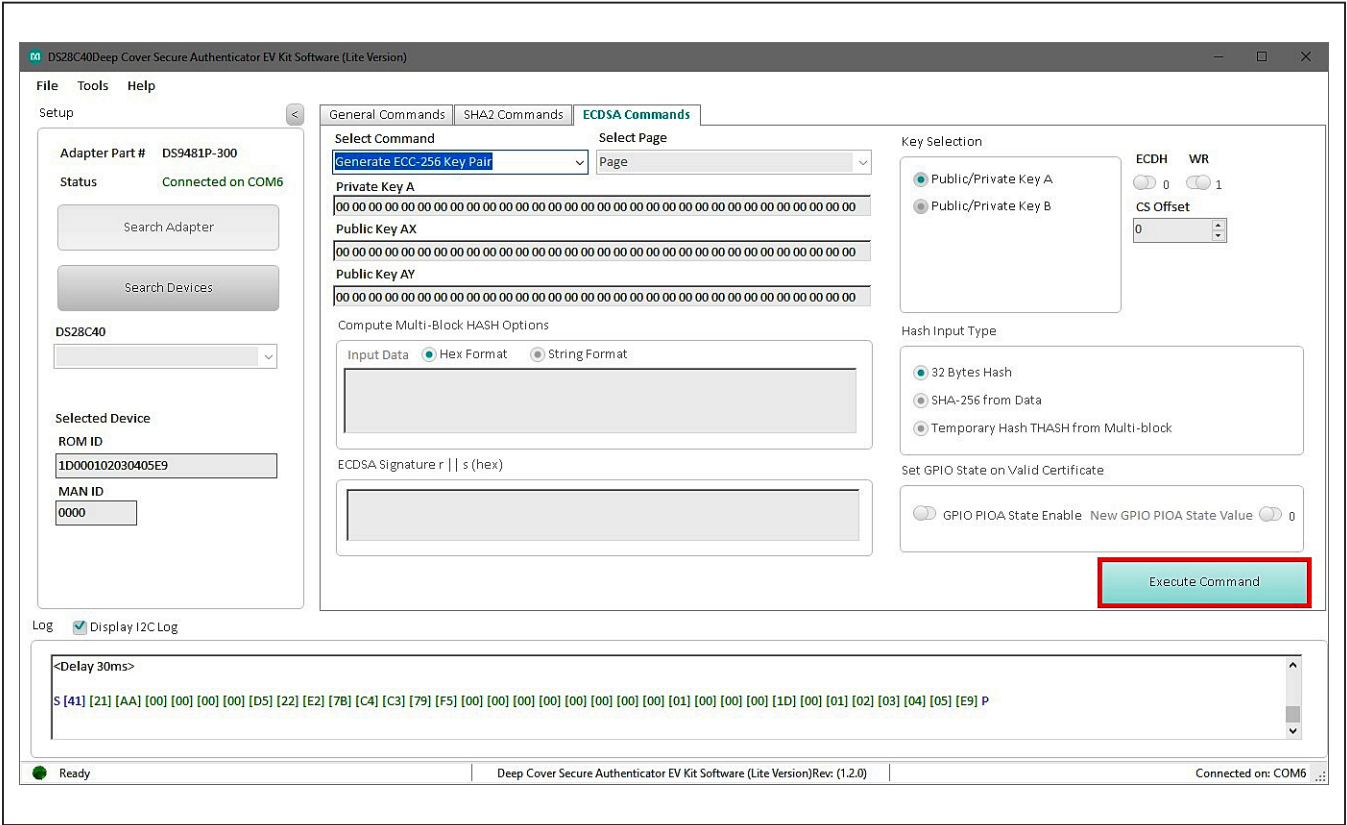


Figure 25. Execute Generate ECC Key

- 4) In the **Select Command** drop-down menu, select the **Compute and Read Page Authentication** command and the **Public/Private Key** from the **Key Selection** combo box (Figure 26).

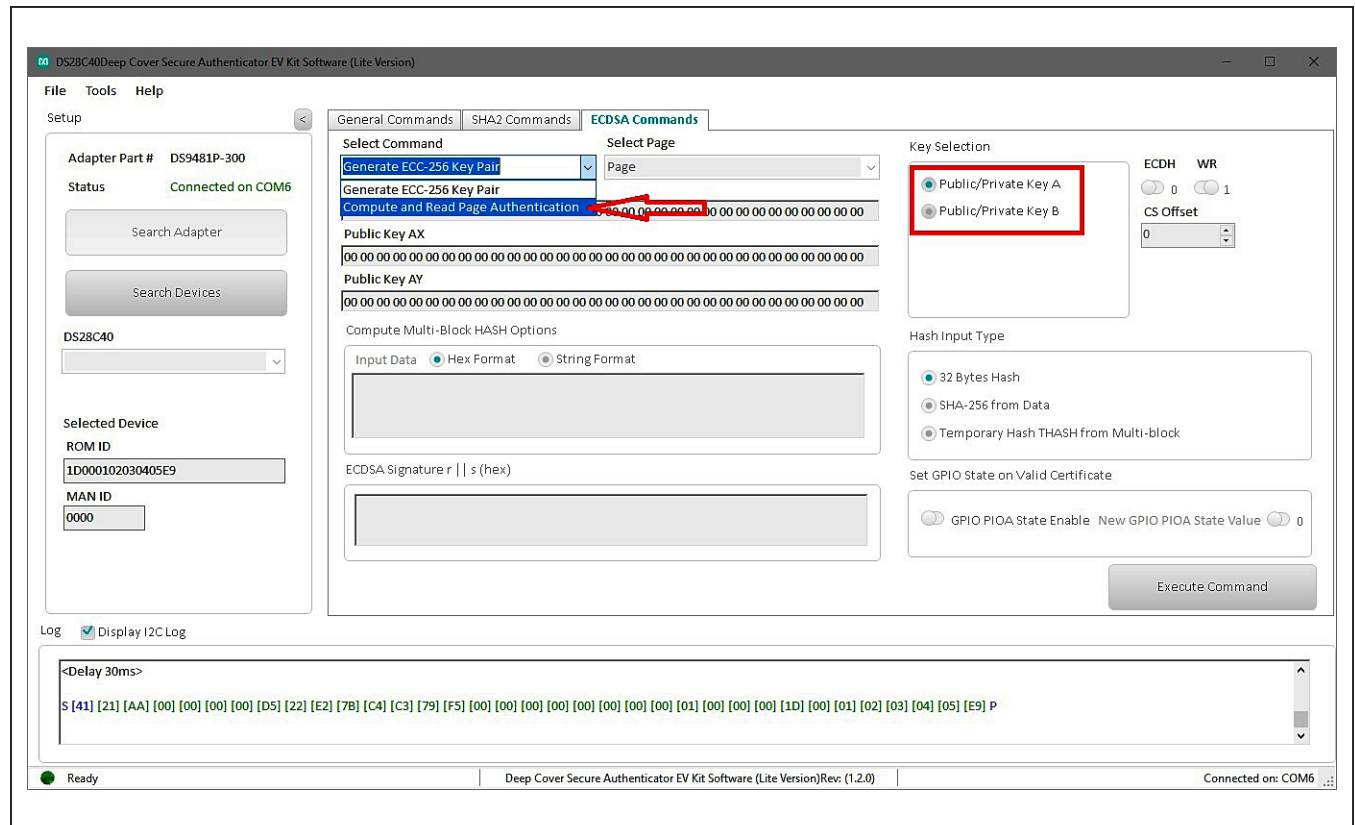


Figure 26. Selecting Command

DS28C40 Evaluation System Lite Version

Evaluates: DS28C40

- From the **Select Page** drop-down menu, select the desired page and public key (Figure 27).
- From the **AT: Authentication Type** combo box, select the private key (Figure 27).
- Click the **Generate Challenge** button and then click **Execute Command** button to perform the sequence (Figure 28). Results are displayed in the **Log** box.

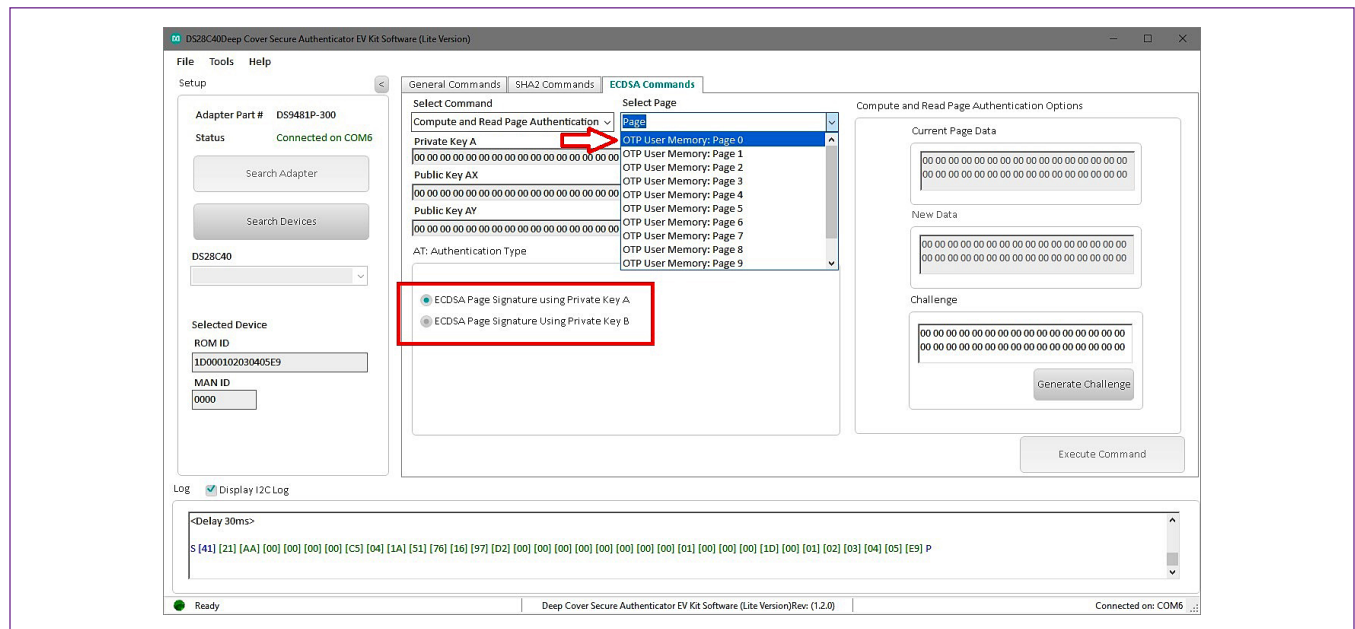


Figure 27. Selecting Page and Key

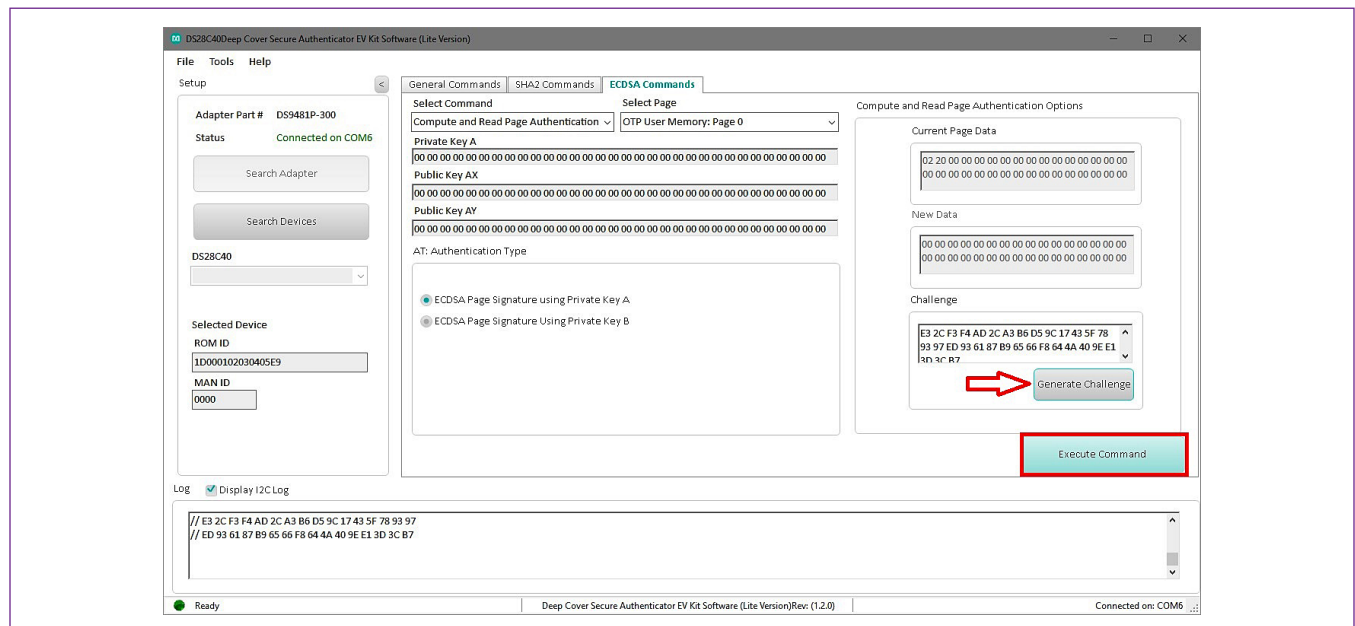


Figure 28. Execute Command

Navigating

The DS28C40 EV Kit Lite Program is divided in five sections: the top menu bar, **Setup** panel, tab control, **Log**, and the status bar.

- **Menu Bar:** Provides additional software features and information used to support the software operation.
- **Setup Panel:** Information for hardware connection and device status.
- **Command Panel:** Main section for command execution and command option selection.
- **Log:** Software communication results for all commands and software transaction. Shows the I²C results and command's inputs and results.
- **Status Bar:** Displays the state of the software after connection the hardware necessary for operation

Connecting and Detecting Hardware

The DS28C40 EV Kit Lite Program detects automatically the required hardware on initialization. To exercise a different DS28C40, open the DS9121CQ socket and replace the device ([Figure 9](#)). Then click the **Search Device** button to detect then new DS28C40.

If, for any reason, the DS9481P-300 is not detected during the initial software load, click the **Search Adapter** button to detect and initialize the USB adapter.

DS28C40 Evaluation System Lite Version

Evaluates: DS28C40

Ordering Information

PART	TYPE
DS28C40EVKIT#	EV System

#Denotes RoHS compliance.

DS9121CQ EV Kit Bill of Materials

DESIGNATION	QTY	DESCRIPTION
Pack-Out	1	I2C AUTHENTICATOR AUTO, EV KIT DS28C40EVKIT#
Pack-Out	5	AUTOMOTIVE I2C AUTHENTICATOR, 6Kb DS28C40G/V+
Pack-Out	1	CABLE, USB A-TO-MICRO-B CABLE (1M) 68784-0001
Pack-Out	1	1W/I2C 4x3MM TDFN SOCKET BOARD DS9121CQ+
Pack-Out	1	BOX, BROWN, 9 3/16" X 7" X 1 1/4"
Pack-Out	1	FOAM, ANTI-STATIC PE 12X12X3.175MM
Pack-Out	2	LABEL, SATIN 1-3/4" X 1-3/8"
Pack-Out	1	2X3", STATISHIELDING, ZIPTOP
Pack-Out	1	INSERT+, MAXIM WEB INSTRUCTION
Pack-Out	1	DS9481P-300 EVAL KIT# DS9481P-300#
Pack-Out	1	1W/I2C 4X3MM TDFN SOCKET BOARD DS9121CQ+
DS9121CQ+ PCB	1	PCB+, DS9121CQ+
J4	1	CONN HEADER VERT 10POS 2.54MM 22284103
J2	0.1	CONN+,HEADER,50PS, 100 SGL, R/A, AU TSW-150-08-G-S-RA

DESIGNATION	QTY	DESCRIPTION
J1	1	CONN+, RCPT, 100" 6POS, R/A GOLD PPPC061LGBN-RC
U1	1	SOCKET+, IC, TDFN10, 4X3MM, CLAMSHELL 10QH50A14030-D
PACK-OUT	1	LABEL BLANK THT-1-423 0.75 X 0.25
PACK-OUT	1	BAG, STATIC SHIELDZIP4X6, W/ESD LO
C1	1	CAP+, 0.1µF, 10%, 10V, X7R, 0603 C0603C104K8RACTU
D1	1	LED+,GREEN CLEAR, 3.2V,20MA,0603 598-8081-107F
JB1	0.1	HEADER 36-40 PINS (CUT TO FIT) 22-28-4363
Populate to JB1	1	SHUNT+, LP W/HANDLE 2 POS 30AU 881545-2
Q1	1	MOSFET, N-CH ENHANCEMENT BSS138LT1G
R3	1	3.3KΩ 1% RESISTOR (0603 PB FREE) ERJ-3EKF3301V
R1, R5	2	RES,10KΩ 1% 0603 ERJ-3EKF1002V

Evaluates: DS28C40

JUMPER LEGEND

J1	J2
DS28E40G/V+	DS28C40G/V+
DS28C40G/V+	Not Used

TDFN Socket Schematic

DS28E40G/V+
DS28C40G/V+

3.3V
R7
R8
R9
R10
R11
R12
R13
R14
R15
R16
R17
R18
R19
R20
R21
R22
R23
R24
R25
R26
R27
R28
R29
R30
R31
R32
R33
R34
R35
R36
R37
R38
R39
R40
R41
R42
R43
R44
R45
R46
R47
R48
R49
R50
R51
R52
R53
R54
R55
R56
R57
R58
R59
R60
R61
R62
R63
R64
R65
R66
R67
R68
R69
R70
R71
R72
R73
R74
R75
R76
R77
R78
R79
R80
R81
R82
R83
R84
R85
R86
R87
R88
R89
R90
R91
R92
R93
R94
R95
R96
R97
R98
R99
R100
R101
R102
R103
R104
R105
R106
R107
R108
R109
R110
R111
R112
R113
R114
R115
R116
R117
R118
R119
R120
R121
R122
R123
R124
R125
R126
R127
R128
R129
R130
R131
R132
R133
R134
R135
R136
R137
R138
R139
R140
R141
R142
R143
R144
R145
R146
R147
R148
R149
R150
R151
R152
R153
R154
R155
R156
R157
R158
R159
R160
R161
R162
R163
R164
R165
R166
R167
R168
R169
R170
R171
R172
R173
R174
R175
R176
R177
R178
R179
R180
R181
R182
R183
R184
R185
R186
R187
R188
R189
R190
R191
R192
R193
R194
R195
R196
R197
R198
R199
R200
R201
R202
R203
R204
R205
R206
R207
R208
R209
R210
R211
R212
R213
R214
R215
R216
R217
R218
R219
R220
R221
R222
R223
R224
R225
R226
R227
R228
R229
R230
R231
R232
R233
R234
R235
R236
R237
R238
R239
R240
R241
R242
R243
R244
R245
R246
R247
R248
R249
R250
R251
R252
R253
R254
R255
R256
R257
R258
R259
R260
R261
R262
R263
R264
R265
R266
R267
R268
R269
R270
R271
R272
R273
R274
R275
R276
R277
R278
R279
R280
R281
R282
R283
R284
R285
R286
R287
R288
R289
R290
R291
R292
R293
R294
R295
R296
R297
R298
R299
R300
R301
R302
R303
R304
R305
R306
R307
R308
R309
R310
R311
R312
R313
R314
R315
R316
R317
R318
R319
R320
R321
R322
R323
R324
R325
R326
R327
R328
R329
R330
R331
R332
R333
R334
R335
R336
R337
R338
R339
R340
R341
R342
R343
R344
R345
R346
R347
R348
R349
R350
R351
R352
R353
R354
R355
R356
R357
R358
R359
R360
R361
R362
R363
R364
R365
R366
R367
R368
R369
R370
R371
R372
R373
R374
R375
R376
R377
R378
R379
R380
R381
R382
R383
R384
R385
R386
R387
R388
R389
R390
R391
R392
R393
R394
R395
R396
R397
R398
R399
R400
R401
R402
R403
R404
R405
R406
R407
R408
R409
R410
R411
R412
R413
R414
R415
R416
R417
R418
R419
R420
R421
R422
R423
R424
R425
R426
R427
R428
R429
R430
R431
R432
R433
R434
R435
R436
R437
R438
R439
R440
R441
R442
R443
R444
R445
R446
R447
R448
R449
R450
R451
R452
R453
R454
R455
R456
R457
R458
R459
R460
R461
R462
R463
R464
R465
R466
R467
R468
R469
R470
R471
R472
R473
R474
R475
R476
R477
R478
R479
R480
R481
R482
R483
R484
R485
R486
R487
R488
R489
R490
R491
R492
R493
R494
R495
R496
R497
R498
R499
R500
R501
R502
R503
R504
R505
R506
R507
R508
R509
R510
R511
R512
R513
R514
R515
R516
R517
R518
R519
R520
R521
R522
R523
R524
R525
R526
R527
R528
R529
R530
R531
R532
R533
R534
R535
R536
R537
R538
R539
R540
R541
R542
R543
R544
R545
R546
R547
R548
R549
R550
R551
R552
R553
R554
R555
R556
R557
R558
R559
R560
R561
R562
R563
R564
R565
R566
R567
R568
R569
R570
R571
R572
R573
R574
R575
R576
R577
R578
R579
R580
R581
R582
R583
R584
R585
R586
R587
R588
R589
R590
R591
R592
R593
R594
R595
R596
R597
R598
R599
R600
R601
R602
R603
R604
R605
R606
R607
R608
R609
R610
R611
R612
R613
R614
R615
R616
R617
R618
R619
R620
R621
R622
R623
R624
R625
R626
R627
R628
R629
R630
R631
R632
R633
R634
R635
R636
R637
R638
R639
R640
R641
R642
R643
R644
R645
R646
R647
R648
R649
R650
R651
R652
R65

Exposed metal needs 30µin Hard Au over 300µin Ni over 1oz Cu

Hard Gold 30 microns
Nickel 300 microns
Copper 1oz
FR4

DS9121CQ+				
Part Number: 90-28C40#K00				
Property of			Rev	
			B	
Drill and Mechanical Layer				
Date: JAN 10 2019 Units in mils				
SIZE	QTY	SYM	PLATED	TOLERANCE
13	15	□	YES	+/- 0.003
39	1	▽	NO	+/- 0.003
39	36	✱	YES	+/- 0.003
47	1	⊙	NO	+/- 0.003
67	4	⊙	YES	+/- 0.003
125	4	✱	NO	+/- 0.003

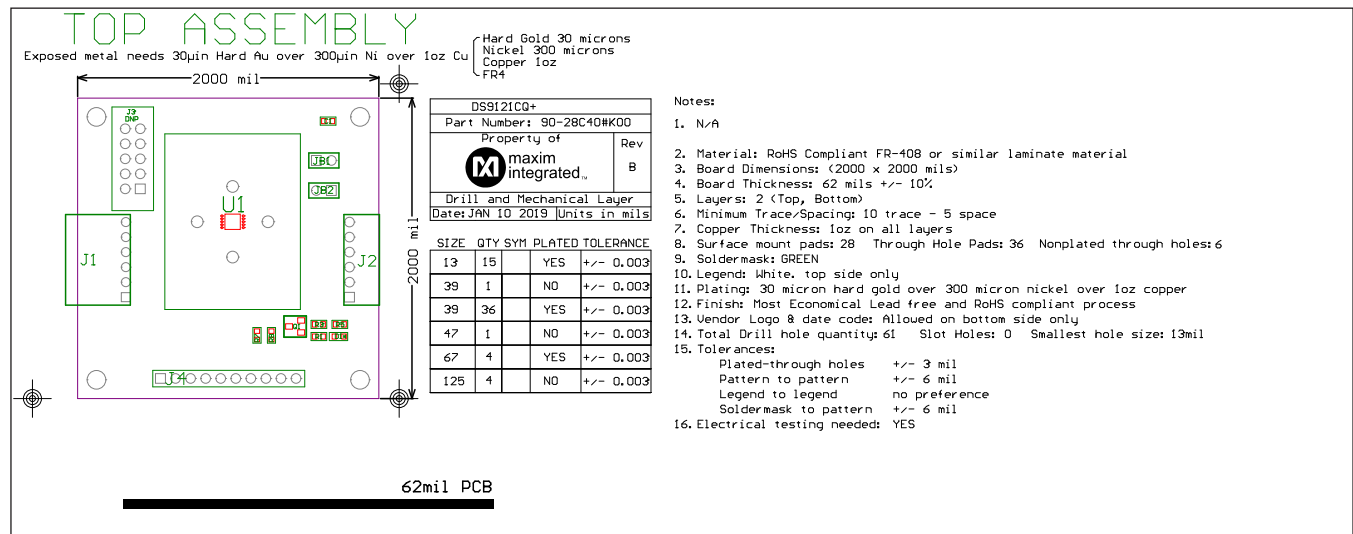
62mil PCB

Notes:

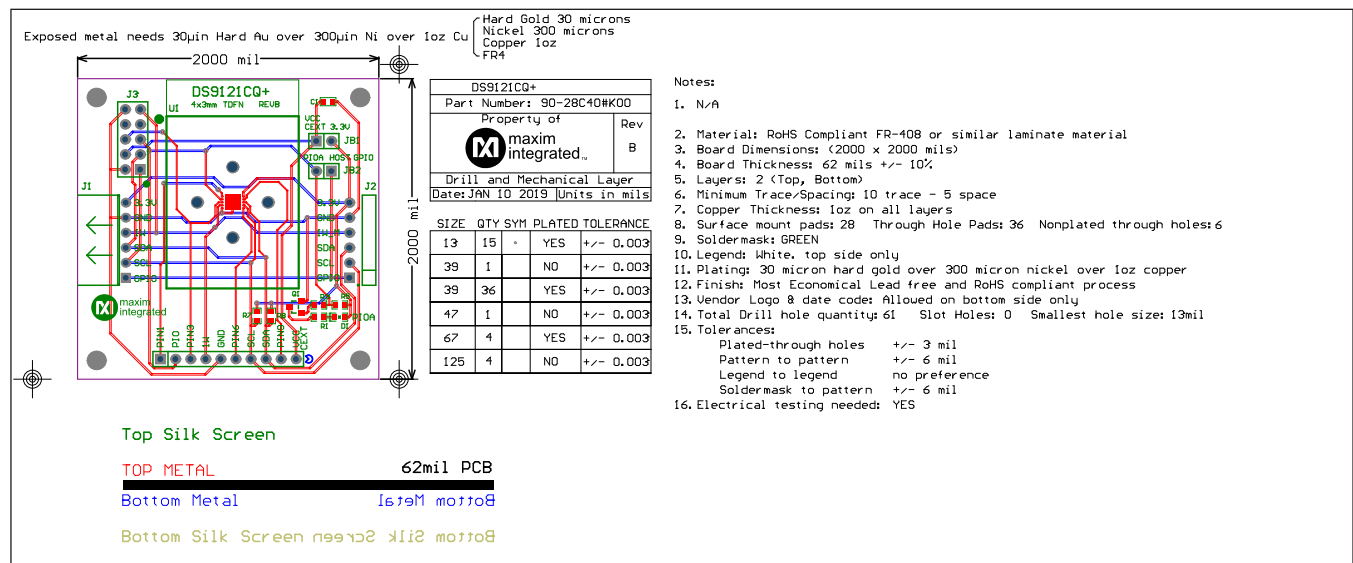
- N/A
- Material: RoHS Compliant FR-408 or similar laminate material
- Board Dimensions: (2000 x 2000 mils)
- Board Thickness: 62 mils +/- 10%
- Layers: 2 (Top, Bottom)
- Minimum Trace/Spacing: 10 trace - 5 space
- Copper Thickness: 1oz on all layers
- Surface mount pads: 28 Through Hole Pads: 36 Nonplated through holes: 6
- Soldermask: GREEN
- Legend: White, top side only
- Plating: 30 micron hard gold over 300 micron nickel over 1oz copper
- Finish: Most Economical Lead free and RoHS compliant process
- Vendor Logo & date code: Allowed on bottom side only
- Total Drill hole quantity: 61 Slot Holes: 0 Smallest hole size: 13mil
- Tolerances:
 - Plated-through holes +/- 3 mil
 - Pattern to pattern +/- 6 mil
 - Legend to legend no preference
 - Soldermask to pattern +/- 6 mil
- Electrical testing needed: YES

Maxim Integrated | 25

DS28C40 EV Kit PCB Layout Diagrams (continued)



Drill and Mechanical Layer (2 of 3)



Drill and Mechanical Layer (3 of 3)

Revision History

REVISION NUMBER	REVISION DATE	DESCRIPTION	PAGES CHANGED
0	6/19	Initial release	—

For pricing, delivery, and ordering information, please visit Maxim Integrated's online storefront at <https://www.maximintegrated.com/en/storefront/storefront.html>.

Maxim Integrated cannot assume responsibility for use of any circuitry other than circuitry entirely embodied in a Maxim Integrated product. No circuit patent licenses are implied. Maxim Integrated reserves the right to change the circuitry and specifications without notice at any time.



**Стандарт
Электрон
Связь**

Мы молодая и активно развивающаяся компания в области поставок электронных компонентов. Мы поставляем электронные компоненты отечественного и импортного производства напрямую от производителей и с крупнейших складов мира.

Благодаря сотрудничеству с мировыми поставщиками мы осуществляем комплексные и плановые поставки широчайшего спектра электронных компонентов.

Собственная эффективная логистика и склад в обеспечивает надежную поставку продукции в точно указанные сроки по всей России.

Мы осуществляем техническую поддержку нашим клиентам и предпродажную проверку качества продукции. На все поставляемые продукты мы предоставляем гарантию .

Осуществляем поставки продукции под контролем ВП МО РФ на предприятия военно-промышленного комплекса России , а также работаем в рамках 275 ФЗ с открытием отдельных счетов в уполномоченном банке. Система менеджмента качества компании соответствует требованиям ГОСТ ISO 9001.

Минимальные сроки поставки, гибкие цены, неограниченный ассортимент и индивидуальный подход к клиентам являются основой для выстраивания долгосрочного и эффективного сотрудничества с предприятиями радиоэлектронной промышленности, предприятиями ВПК и научно-исследовательскими институтами России.

С нами вы становитесь еще успешнее!

Наши контакты:

Телефон: +7 812 627 14 35

Электронная почта: sales@st-electron.ru

Адрес: 198099, Санкт-Петербург,
Промышленная ул, дом № 19, литера Н,
помещение 100-Н Офис 331