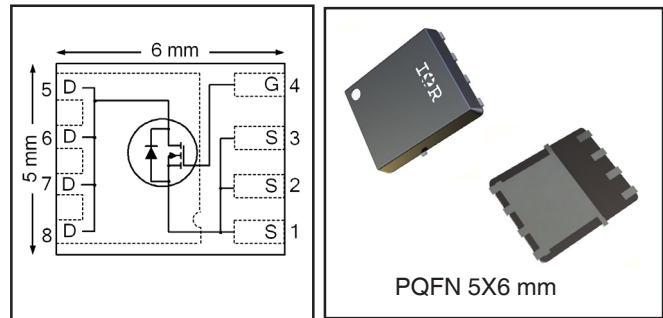


HEXFET® Power MOSFET

| | | |
|--|-------------|-----------|
| V_{DS} | 30 | V |
| $V_{GS\ max}$ | ± 20 | V |
| $R_{DS(on)\ max}$ (@ $V_{GS} = 10V$) | 6.6 | mΩ |
| (@ $V_{GS} = 4.5V$) | 9.9 | |
| $Q_g\ typ.$ | 9.3 | nC |
| I_D (@ $T_{c(Bottom)} = 25^\circ C$) | 25 Ⓣ | A |



Applications

- Control MOSFET for high frequency buck converters
- Synchronous MOSFET for high frequency buck converters

Features and Benefits

Features

| |
|--|
| Low Thermal Resistance to PCB (< 3.6°C/W) |
| Low Profile (<1.2mm) |
| Industry-Standard Pinout |
| Compatible with Existing Surface Mount Techniques |
| RoHS Compliant Containing no Lead, no Bromide and no Halogen |
| MSL1, Consumer Qualification |

results in



Benefits

| |
|-----------------------------------|
| Enable better thermal dissipation |
| Increased Power Density |
| Multi-Vendor Compatibility |
| Easier Manufacturing |
| Environmentally Friendlier |
| Increased Reliability |

| Orderable part number | Package Type | Standard Pack | | Note |
|-----------------------|----------------|---------------|----------|-----------------|
| | | Form | Quantity | |
| IRFH8330TRPBF | PQFN 5mm x 6mm | Tape and Reel | 4000 | |
| IRFH8330TR2PBF | PQFN 5mm x 6mm | Tape and Reel | 400 | EOL notice #259 |

Absolute Maximum Ratings

| | Parameter | Max. | Units |
|-------------------------------------|--|--------------|-------|
| V_{DS} | Drain-to-Source Voltage | 30 | V |
| V_{GS} | Gate-to-Source Voltage | ± 20 | |
| $I_D @ T_A = 25^\circ C$ | Continuous Drain Current, $V_{GS} @ 10V$ | 17 | A |
| $I_D @ T_A = 70^\circ C$ | Continuous Drain Current, $V_{GS} @ 10V$ | 14 | |
| $I_D @ T_{c(Bottom)} = 25^\circ C$ | Continuous Drain Current, $V_{GS} @ 10V$ | 56 | |
| $I_D @ T_{c(Bottom)} = 100^\circ C$ | Continuous Drain Current, $V_{GS} @ 10V$ | 36 | |
| $I_D @ T_C = 25^\circ C$ | Continuous Drain Current, $V_{GS} @ 10V$ (Source Bonding Technology Limited) | 25 | |
| I_{DM} | Pulsed Drain Current ① | 210 | |
| $P_D @ T_A = 25^\circ C$ | Power Dissipation ② | 3.3 | W |
| $P_D @ T_{c(Bottom)} = 25^\circ C$ | Power Dissipation ② | 35 | |
| | Linear Derating Factor ③ | 0.026 | W/°C |
| T_J | Operating Junction and | -55 to + 150 | °C |
| T_{STG} | Storage Temperature Range | | |

Notes ① through ③ are on page 9

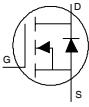
Static @ T_J = 25°C (unless otherwise specified)

| | Parameter | Min. | Typ. | Max. | Units | Conditions |
|-------------------------------------|---|------|------|------|-------|--|
| BV _{DSS} | Drain-to-Source Breakdown Voltage | 30 | — | — | V | V _{GS} = 0V, I _D = 250μA |
| ΔBV _{DSS} /ΔT _J | Breakdown Voltage Temp. Coefficient | — | 23 | — | mV/°C | Reference to 25°C, I _D = 1.0mA |
| R _{DS(on)} | Static Drain-to-Source On-Resistance | — | 5.3 | 6.6 | mΩ | V _{GS} = 10V, I _D = 20A ③ |
| | | — | 7.7 | 9.9 | | V _{GS} = 4.5V, I _D = 16A ③ |
| V _{GS(th)} | Gate Threshold Voltage | 1.35 | 1.8 | 2.35 | V | V _{DS} = V _{GS} , I _D = 25μA |
| ΔV _{GS(th)} | Gate Threshold Voltage Coefficient | — | -6.3 | — | mV/°C | |
| I _{DSS} | Drain-to-Source Leakage Current | — | — | 1.0 | μA | V _{DS} = 24V, V _{GS} = 0V |
| | | — | — | 150 | | V _{DS} = 24V, V _{GS} = 0V, T _J = 125°C |
| I _{GSS} | Gate-to-Source Forward Leakage | — | — | 100 | nA | V _{GS} = 20V |
| | Gate-to-Source Reverse Leakage | — | — | -100 | | V _{GS} = -20V |
| g _{fs} | Forward Transconductance | 61 | — | — | S | V _{DS} = 10V, I _D = 20A |
| Q _g | Total Gate Charge | — | 20 | — | nC | V _{GS} = 10V, V _{DS} = 15V, I _D = 20A |
| Q _g | Total Gate Charge | — | 9.3 | — | nC | V _{DS} = 15V V _{GS} = 4.5V I _D = 20A |
| Q _{gs1} | Pre-V _{th} Gate-to-Source Charge | — | 2.7 | — | | |
| Q _{gs2} | Post-V _{th} Gate-to-Source Charge | — | 1.6 | — | | |
| Q _{gd} | Gate-to-Drain Charge | — | 2.5 | — | | |
| Q _{godr} | Gate Charge Overdrive | — | 2.5 | — | | |
| Q _{sw} | Switch Charge (Q _{gs2} + Q _{gd}) | — | 4.1 | — | nC | V _{DS} = 16V, V _{GS} = 0V |
| Q _{oss} | Output Charge | — | 7.1 | — | | |
| R _G | Gate Resistance | — | 1.8 | — | Ω | |
| t _{d(on)} | Turn-On Delay Time | — | 9.2 | — | ns | V _{DD} = 30V, V _{GS} = 4.5V I _D = 20A R _G = 1.8Ω |
| t _r | Rise Time | — | 15 | — | | |
| t _{d(off)} | Turn-Off Delay Time | — | 10 | — | | |
| t _f | Fall Time | — | 5.7 | — | | |
| C _{iss} | Input Capacitance | — | 1450 | — | pF | V _{GS} = 0V V _{DS} = 25V f = 1.0MHz |
| C _{oss} | Output Capacitance | — | 250 | — | | |
| C _{rss} | Reverse Transfer Capacitance | — | 110 | — | | |

Avalanche Characteristics

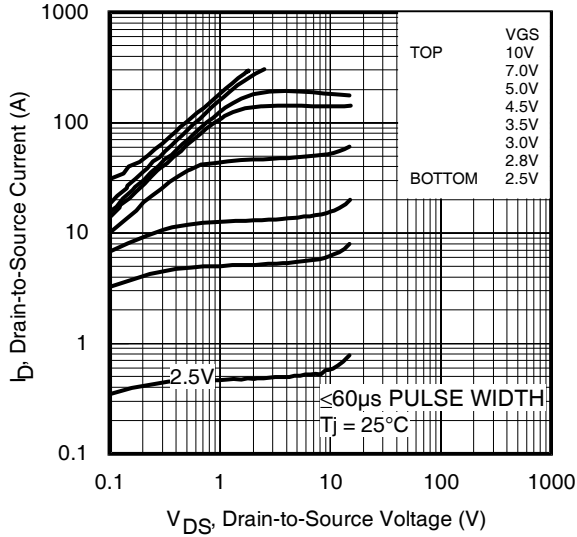
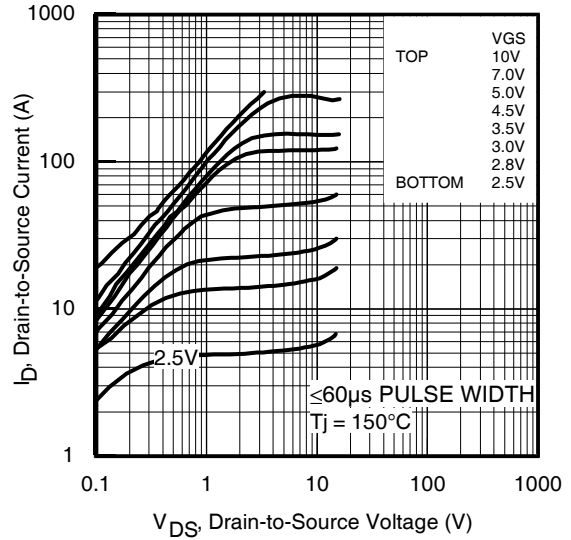
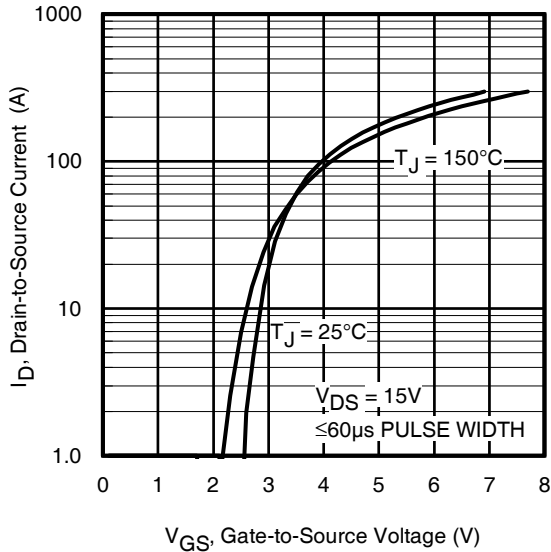
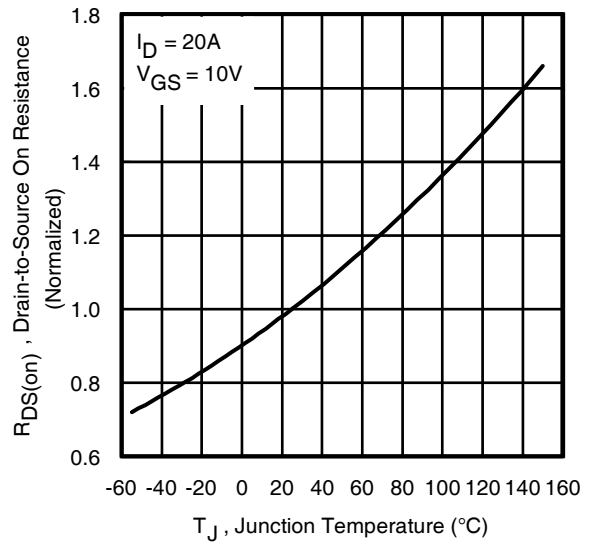
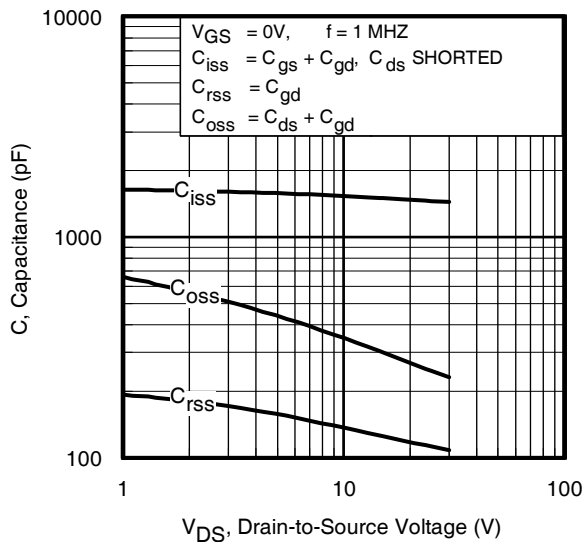
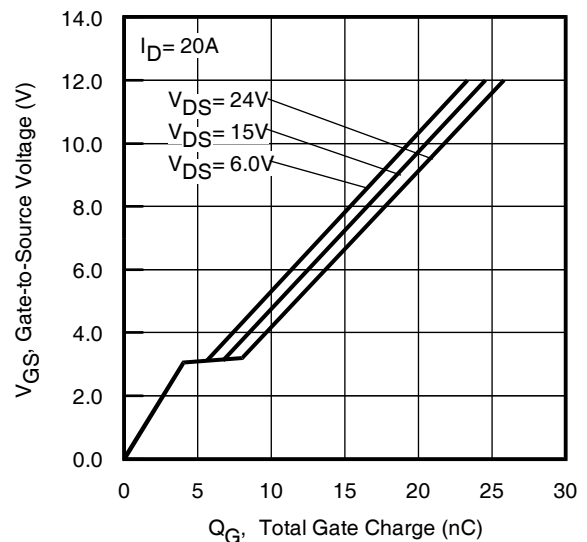
| | Parameter | Typ. | Max. | Units |
|-----------------|---------------------------------|------|------|-------|
| E _{AS} | Single Pulse Avalanche Energy ② | — | 52 | mJ |
| I _{AR} | Avalanche Current ① | — | 20 | A |

Diode Characteristics

| | Parameter | Min. | Typ. | Max. | Units | Conditions |
|-----------------|---|---|------|------|-------|--|
| I _S | Continuous Source Current (Body Diode) | — | — | 20 | A | MOSFET symbol showing the integral reverse p-n junction diode.  |
| I _{SM} | Pulsed Source Current (Body Diode) ① | — | — | 210 | | |
| V _{SD} | Diode Forward Voltage | — | — | 1.0 | V | T _J = 25°C, I _S = 20A, V _{GS} = 0V ③ |
| t _{rr} | Reverse Recovery Time | — | 14 | 21 | ns | T _J = 25°C, I _F = 20A, V _{DD} = 15V |
| Q _{rr} | Reverse Recovery Charge | — | 23 | 35 | nC | di/dt = 390 A/μs ③ |
| t _{on} | Forward Turn-On Time | Time is dominated by parasitic inductance | | | | |

Thermal Resistance

| | Parameter | Typ. | Max. | Units |
|---------------------------|-----------------------|------|------|-------|
| R _{θJC} (Bottom) | Junction-to-Case ④ | — | 3.6 | °C/W |
| R _{θJC} (Top) | Junction-to-Case ④ | — | 40 | |
| R _{θJA} | Junction-to-Ambient ⑤ | — | 38 | |
| R _{θJA} (<10s) | Junction-to-Ambient ⑤ | — | 25 | |


Fig 1. Typical Output Characteristics

Fig 2. Typical Output Characteristics

Fig 3. Typical Transfer Characteristics

Fig 4. Normalized On-Resistance vs. Temperature

Fig 5. Typical Capacitance vs. Drain-to-Source Voltage

Fig 6. Typical Gate Charge vs. Gate-to-Source Voltage

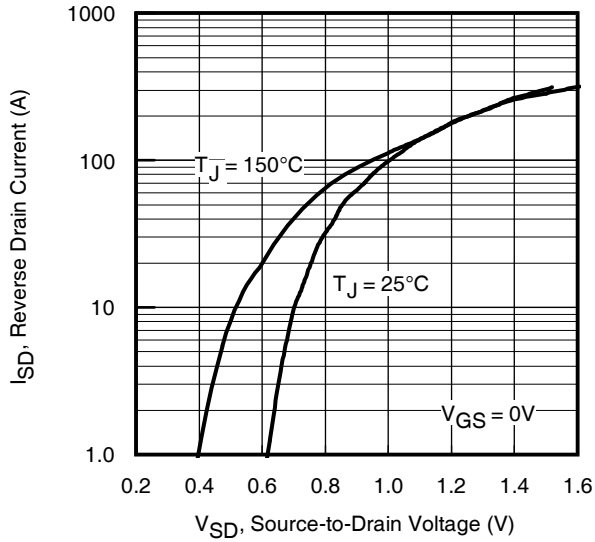


Fig 7. Typical Source-Drain Diode Forward Voltage

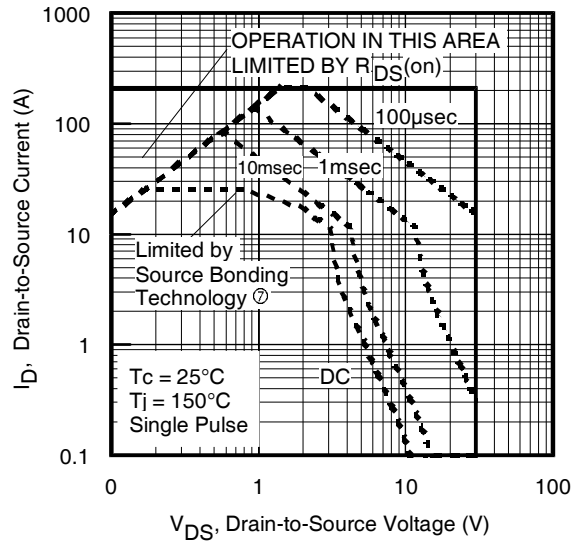


Fig 8. Maximum Safe Operating Area

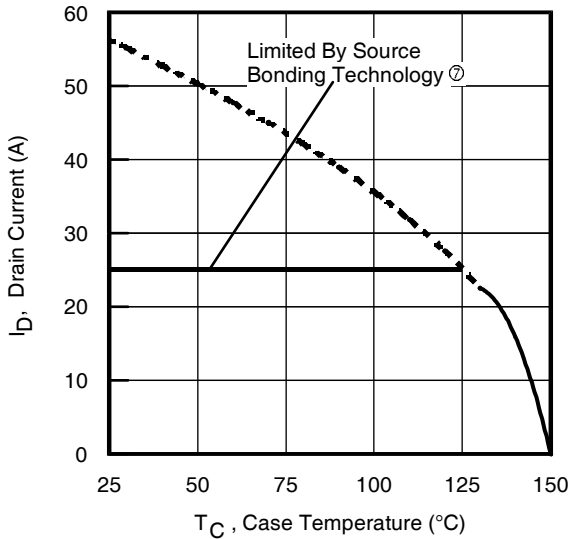


Fig 9. Maximum Drain Current vs. Case (Bottom) Temperature

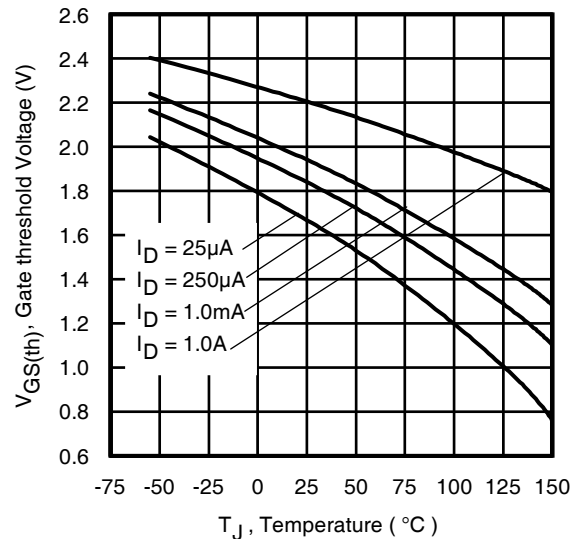


Fig 10. Threshold Voltage vs. Temperature

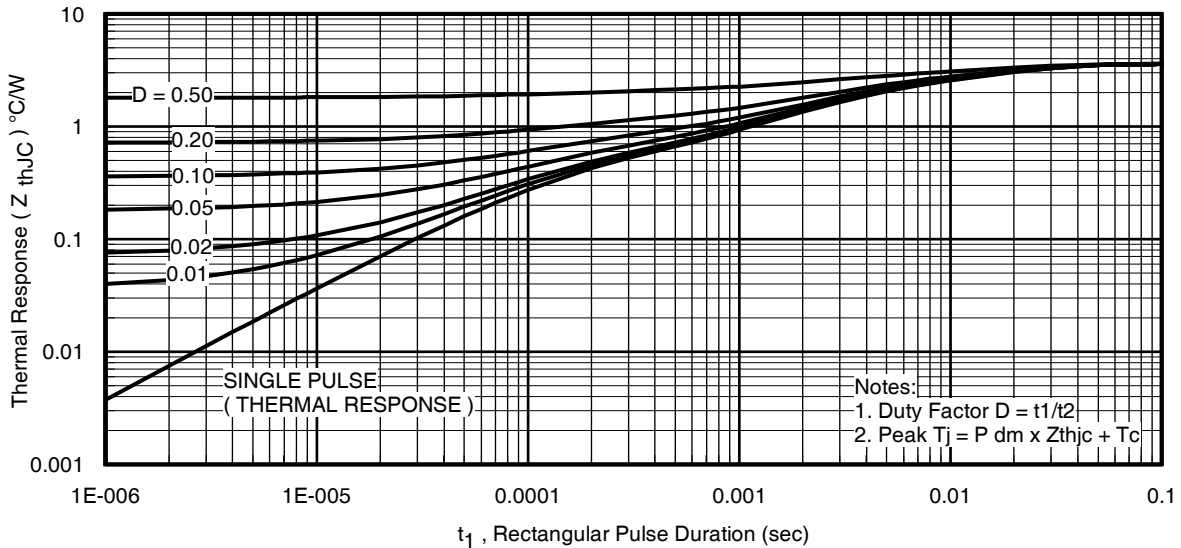


Fig 11. Maximum Effective Transient Thermal Impedance, Junction-to-Case (Bottom)

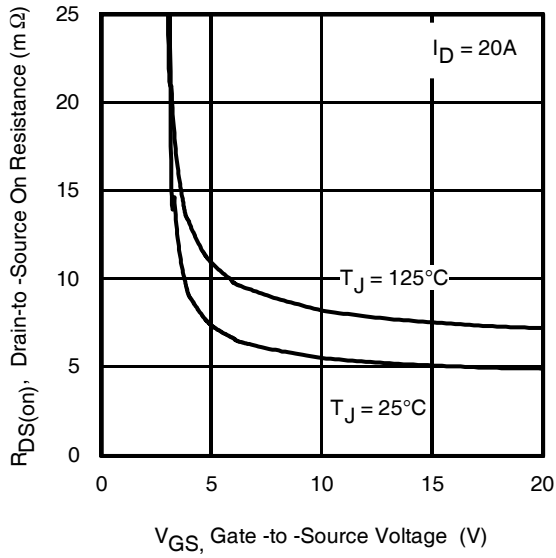


Fig 12. On-Resistance vs. Gate Voltage

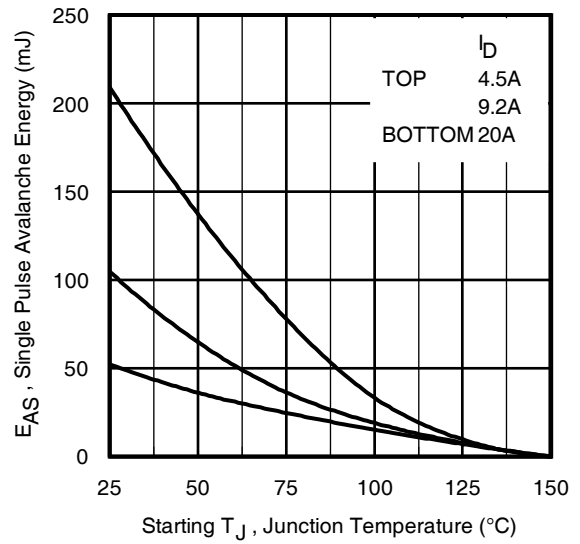


Fig 13. Maximum Avalanche Energy vs. Drain Current

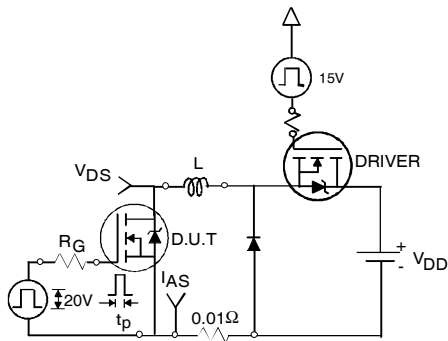


Fig 14a. Unclamped Inductive Test Circuit

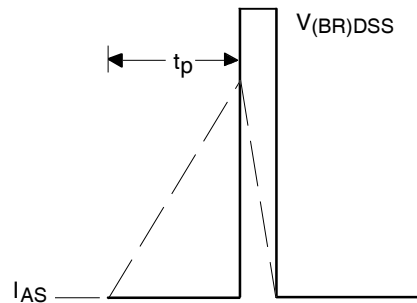


Fig 14b. Unclamped Inductive Waveforms

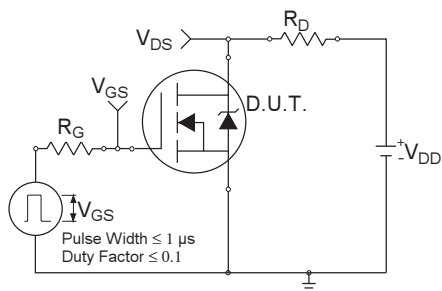


Fig 15a. Switching Time Test Circuit

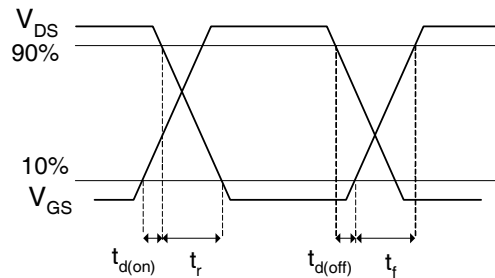


Fig 15b. Switching Time Waveforms

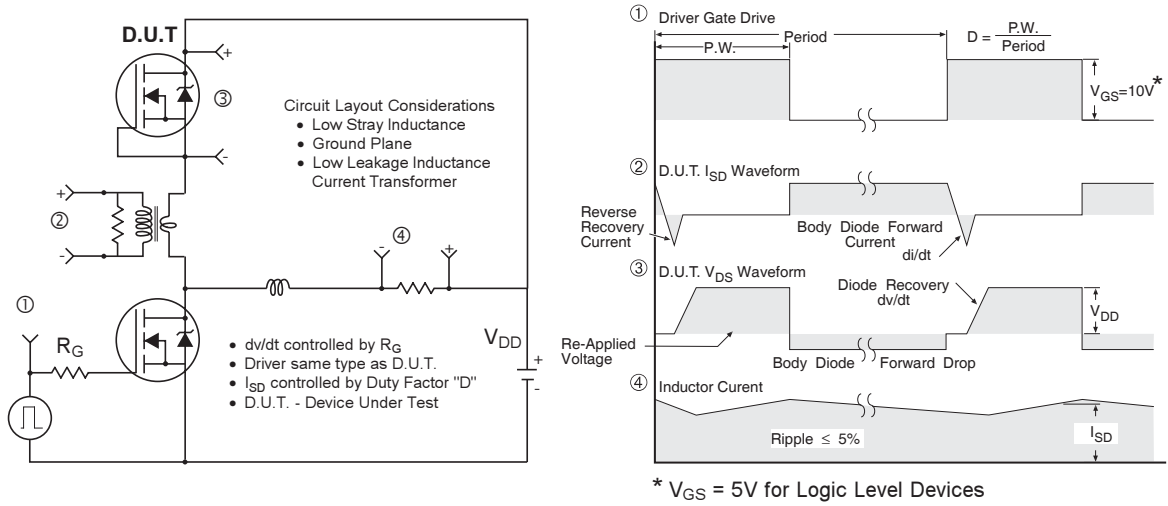


Fig 16. Peak Diode Recovery dv/dt Test Circuit for N-Channel HEXFET[®] Power MOSFETs

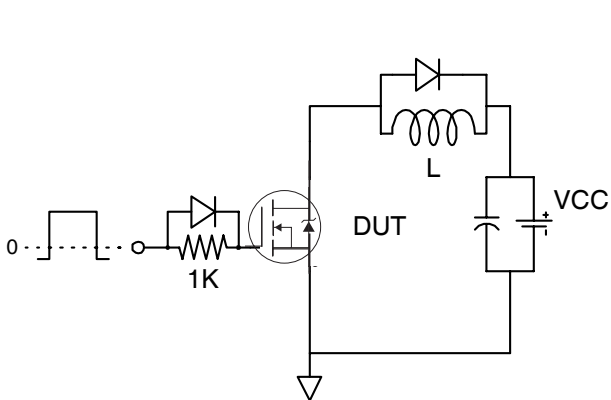


Fig 17. Gate Charge Test Circuit

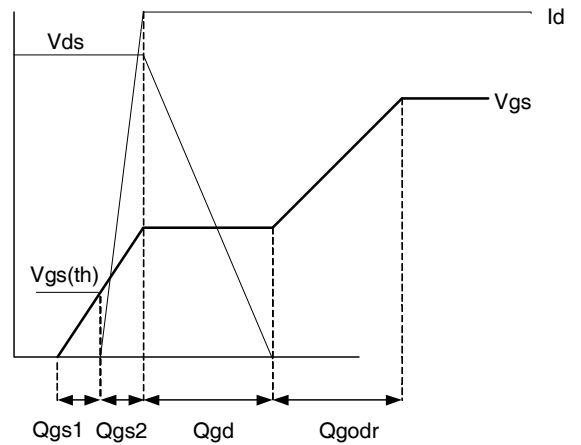
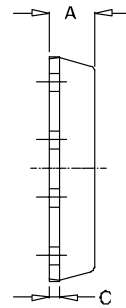
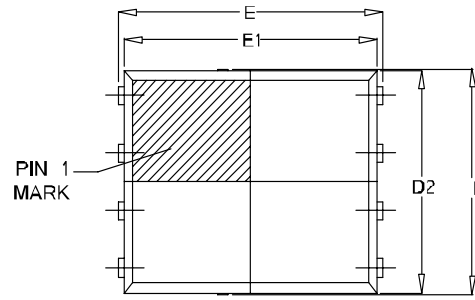


Fig 18. Gate Charge Waveform

PQFN 5x6 Outline "E" Package Details

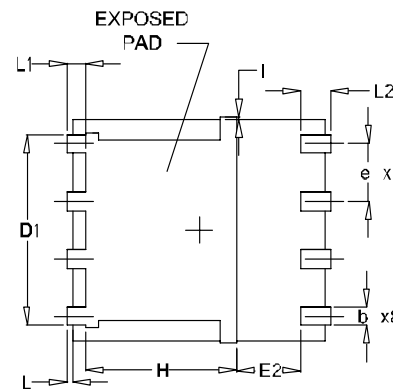


SIDEVIEW



TOP VIEW

| SYMBOL | OUTLINE PQFN 5X6E | | |
|--------|-------------------|------|------|
| | MIN. | NOM. | MAX. |
| A | 0.90 | 1.03 | 1.17 |
| b | 0.33 | 0.41 | 0.48 |
| C | 0.20 | 0.25 | 0.35 |
| D | 4.80 | 4.98 | 5.15 |
| D1 | 3.91 | 4.11 | 4.31 |
| D2 | 4.80 | 4.90 | 5.00 |
| E | 5.90 | 6.02 | 6.15 |
| E1 | 5.65 | 5.75 | 5.85 |
| E2 | 1.10 | — | — |
| e | 1.27 BSC | | |
| L | 0.05 | 0.15 | 0.25 |
| L1 | 0.38 | 0.44 | 0.50 |
| L2 | 0.51 | 0.68 | 0.86 |
| H | 3.32 | 3.45 | 3.58 |
| I | — | — | 0.18 |



BOTTOM VIEW

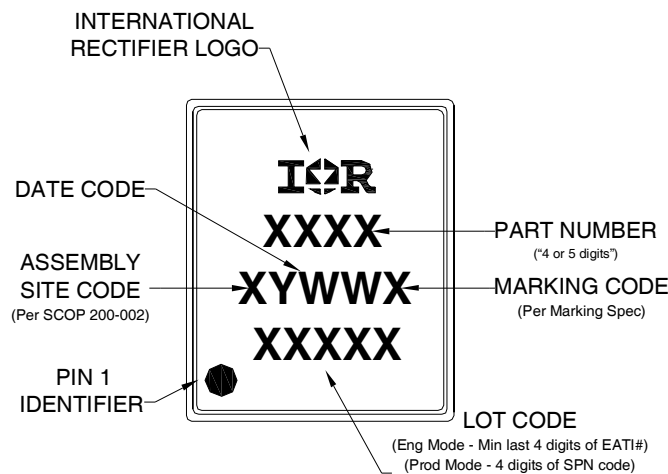
For more information on board mounting, including footprint and stencil recommendation, please refer to application note AN-1136:

<http://www.irf.com/technical-info/appnotes/an-1136.pdf>

For more information on package inspection techniques, please refer to application note AN-1154:

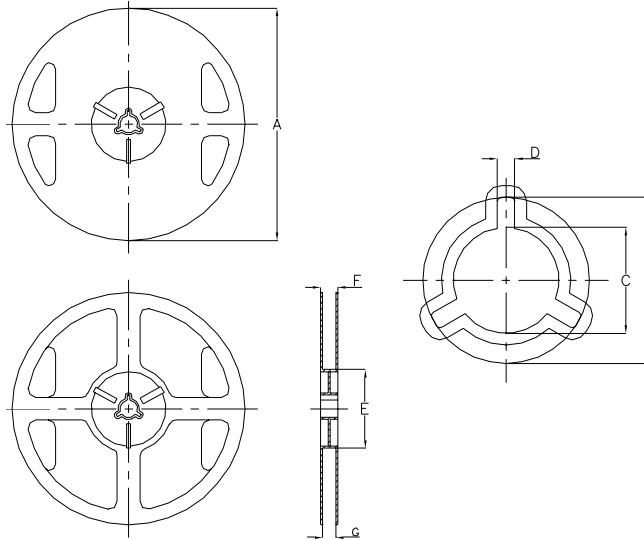
<http://www.irf.com/technical-info/appnotes/an-1154.pdf>

PQFN 5x6 Outline "E" Part Marking



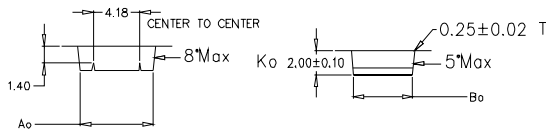
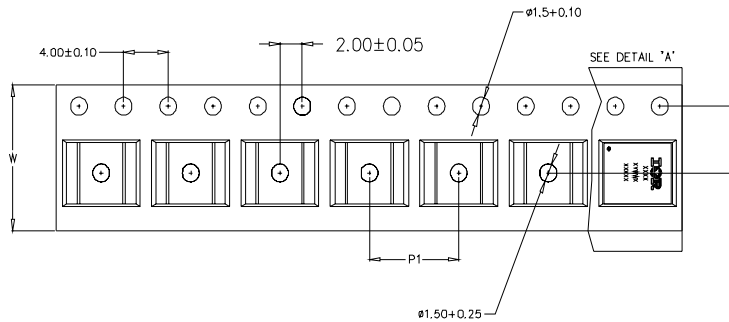
Note: For the most current drawing please refer to IR website at: <http://www.irf.com/package/>

PQFN 5x6 Outline "E" Tape and Reel

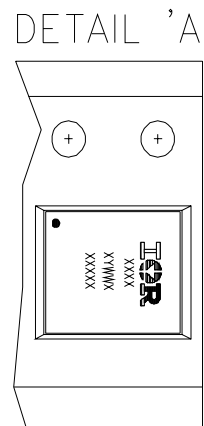


NOTE: Controlling dimensions in mm Std reel quantity is 4000 parts.

| REEL DIMENSIONS | | | | | | | | |
|-----------------|----------------------------|-------|----------|--------|---------------------|-------|----------|-------|
| CODE | STANDARD OPTION (QTY 4000) | | | | TR OPTION (QTY 400) | | | |
| | METRIC | | IMPERIAL | | METRIC | | IMPERIAL | |
| A | 329.5 | 330.5 | 12.972 | 13.011 | 177.5 | 178.5 | 6.988 | 7.028 |
| B | 20.9 | 21.5 | 0.823 | 0.846 | 20.9 | 21.5 | 0.823 | 0.846 |
| C | 12.8 | 13.5 | 0.504 | 0.532 | 13.2 | 13.8 | 0.520 | 0.543 |
| D | 1.7 | 2.3 | 0.067 | 0.091 | 1.9 | 2.3 | 0.075 | 0.091 |
| E | 97 | 99 | 3.819 | 3.898 | 65 | 66 | 2.350 | 2.598 |
| F | Ref | 17.4 | | | Ref | 12 | | |
| G | 13 | 14.5 | 0.512 | 0.571 | 13 | 14.5 | 0.512 | 0.571 |



| | |
|----|-------------|
| Ao | 6.50 ±0.10 |
| Bo | 5.28 ±0.10 |
| F | 5.50 ±0.05 |
| P1 | 8.00 ±0.10 |
| W | 12.00 ±0.05 |



Qualification information†

| | | |
|----------------------------|---|--|
| Qualification level | Consumer ^{††} (per JEDEC JESD47F ^{†††} guidelines) | |
| Moisture Sensitivity Level | PQFN 5mm x 6mm | MSL1 (per JEDEC J-STD-020D ^{†††}) |
| RoHS compliant | Yes | |

- † Qualification standards can be found at International Rectifier’s web site
<http://www.irf.com/product-info/reliability>
- †† Higher qualification ratings may be available should the user have such requirements. Please contact your International Rectifier sales representative for further information:
<http://www.irf.com/whoto-call/salesrep/>
- ††† Applicable version of JEDEC standard at the time of product release.

Notes:

- ① Repetitive rating; pulse width limited by max. junction temperature.
- ② Starting $T_J = 25^\circ\text{C}$, $L = 0.26\text{mH}$, $R_G = 50\Omega$, $I_{AS} = 20\text{A}$.
- ③ Pulse width $\leq 400\mu\text{s}$; duty cycle $\leq 2\%$.
- ④ R_θ is measured at T_J of approximately 90°C .
- ⑤ When mounted on 1 inch square 2 oz copper pad on 1.5x1.5 in. board of FR-4 material.
- ⑥ Calculated continuous current based on maximum allowable junction temperature.
- ⑦ Current is limited to 25A by source bonding technology.

Revision History

| Date | Comment |
|----------|--|
| 1/9/2014 | <ul style="list-style-type: none"> • Updated ordering information to reflect the End-Of-Life (EOL) of the mini-reel option (EOL notice #259). • Updated data sheet with the new IR corporate template. |



Стандарт Электрон Связь

Мы молодая и активно развивающаяся компания в области поставок электронных компонентов. Мы поставляем электронные компоненты отечественного и импортного производства напрямую от производителей и с крупнейших складов мира.

Благодаря сотрудничеству с мировыми поставщиками мы осуществляем комплексные и плановые поставки широчайшего спектра электронных компонентов.

Собственная эффективная логистика и склад в обеспечивает надежную поставку продукции в точно указанные сроки по всей России.

Мы осуществляем техническую поддержку нашим клиентам и предпродажную проверку качества продукции. На все поставляемые продукты мы предоставляем гарантию .

Осуществляем поставки продукции под контролем ВП МО РФ на предприятия военно-промышленного комплекса России , а также работаем в рамках 275 ФЗ с открытием отдельных счетов в уполномоченном банке. Система менеджмента качества компании соответствует требованиям ГОСТ ISO 9001.

Минимальные сроки поставки, гибкие цены, неограниченный ассортимент и индивидуальный подход к клиентам являются основой для выстраивания долгосрочного и эффективного сотрудничества с предприятиями радиоэлектронной промышленности, предприятиями ВПК и научно-исследовательскими институтами России.

С нами вы становитесь еще успешнее!

Наши контакты:

Телефон: +7 812 627 14 35

Электронная почта: sales@st-electron.ru

Адрес: 198099, Санкт-Петербург,
Промышленная ул, дом № 19, литера Н,
помещение 100-Н Офис 331