

LT3477 and LT3003
 High Current Multi-String LED Driver with
 Wide PWM Dimming Range

WARNING!
 DO NOT LOOK AT OPERATING LED.
 This circuit produces light that can damage eyes.

DESCRIPTION

Demonstration circuit 1130 is a High Current Multi-String LED Driver with Wide PWM Dimming Range featuring the LT3477 and LT3003. The demo circuit boosts V_{IN} , between 8V and 16V, to the required V_{OUT} for a load of three LED strings. The current in each string is 110mA. The LT3003 LED ballaster offers high efficiency and good current matching. The circuit can drive 6 to 8 white LEDs per string. For 8 LEDs, it is recommended to change R5 to 1.15M. For other colors, the number of LEDs the circuit can drive depends on the forward voltage of LEDs used. The demo circuit operates at 2MHz, offering small solution size while avoiding the frequency band of the AM radio. Pulling the SHDN terminal to ground (GND) will disable the demo board. OT1 or OT2 can be left floating.

Fast LED current turn-on and -off is made possible by adding Q1 and D2. This allows wide PWM

dimming ratio. PWM dimming offers better LED color integrity than the DC dimming. At 100Hz PWM frequency, 300:1 dimming ratio can be easily achieved with this demo circuit.

Other current levels and/or load configurations can be achieved with simple modifications. Please consult the datasheets or the factory for customization details.

The LT3477 and the LT3003 datasheets give complete description of the part, operation and application information. The datasheets must be read in conjunction with this quick start guide for working on or modifying the demo circuit 1130.

Design files for this circuit board are available. Call the LTC factory.

LT, LTC and LT are registered trademarks of Linear Technology Corporation. ThinSOT and PowerPath are trademarks of Linear Technology Corporation.

PERFORMANCE SUMMARY

Specifications are at $T_A = 25^\circ\text{C}$

| SYMBOL | PARAMETER | CONDITIONS | MIN | TYP | MAX | UNITS |
|------------|-----------------------------|--|-----|-----|-----|-------|
| V_{IN} | Input Supply Range | | 8 | | 16 | V |
| V_{PWM} | PWM Voltage | | 3 | | 6 | V |
| F_s | Switching Frequency | | | 2 | | MHz |
| N | Number of LED Strings | | | 3 | | N/A |
| I_{OUT} | Total Output Current | | | 330 | | mA |
| V_{OPEN} | Open Circuit Output Voltage | No Load | | 29 | | V |
| η | Efficiency | $V_{IN} = 12\text{V}$ 3 LED strings, 8 LEDs per string, 110mA/string | | 78 | | % |

QUICK START PROCEDURE

Demonstration circuit 1130 is easy to set up to evaluate the performance of the LT3477 and LT3003. Refer to Figure 1 for proper measurement equipment setup and follow the procedure below:

NOTE. When measuring the input or output voltage ripple, care must be taken to avoid a long ground lead on the oscilloscope probe. Measure the input or output voltage ripple by touching the probe tip directly across the V_{IN} or V_{OUT} and GND terminals. See Figure 2 for proper scope probe technique.

1. With power off, connect an input power supply to V_{IN} and GND.
2. Connect the PWM turret to a different supply.
3. Connect three (3) LED strings between V_{OUT} and LED1- to LED3- respectively.
4. Turn on V_{IN} and PWM supplies.
NOTE. Make sure that the input voltage does not exceed 16V.
5. Check for the proper voltages and currents.
NOTE. If the LEDs do not light up, check all the connections.
6. Once the proper operations are established, adjust the input within the operating range and observe the parameters interested.
7. To test PWM dimming, apply a PWM signal to the PWM turret and observe the relationship between the LED average current and the dimming ratio.

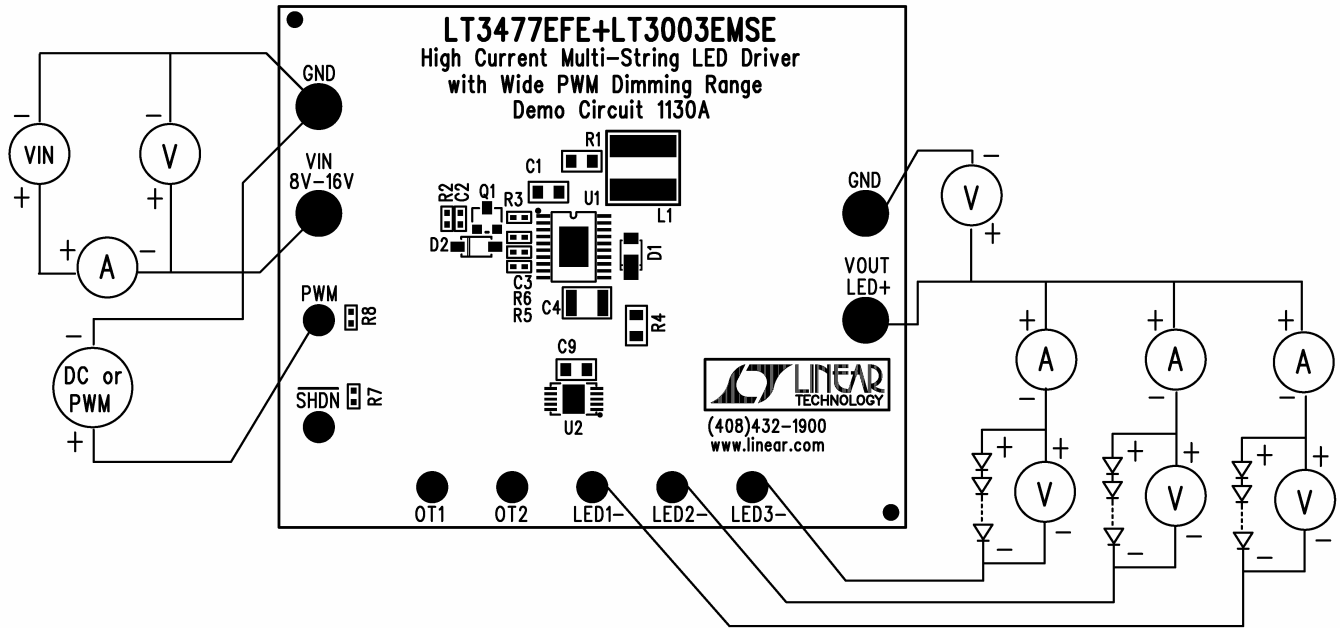


Figure 1. Proper Measurement Equipment Setup

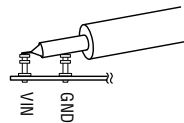
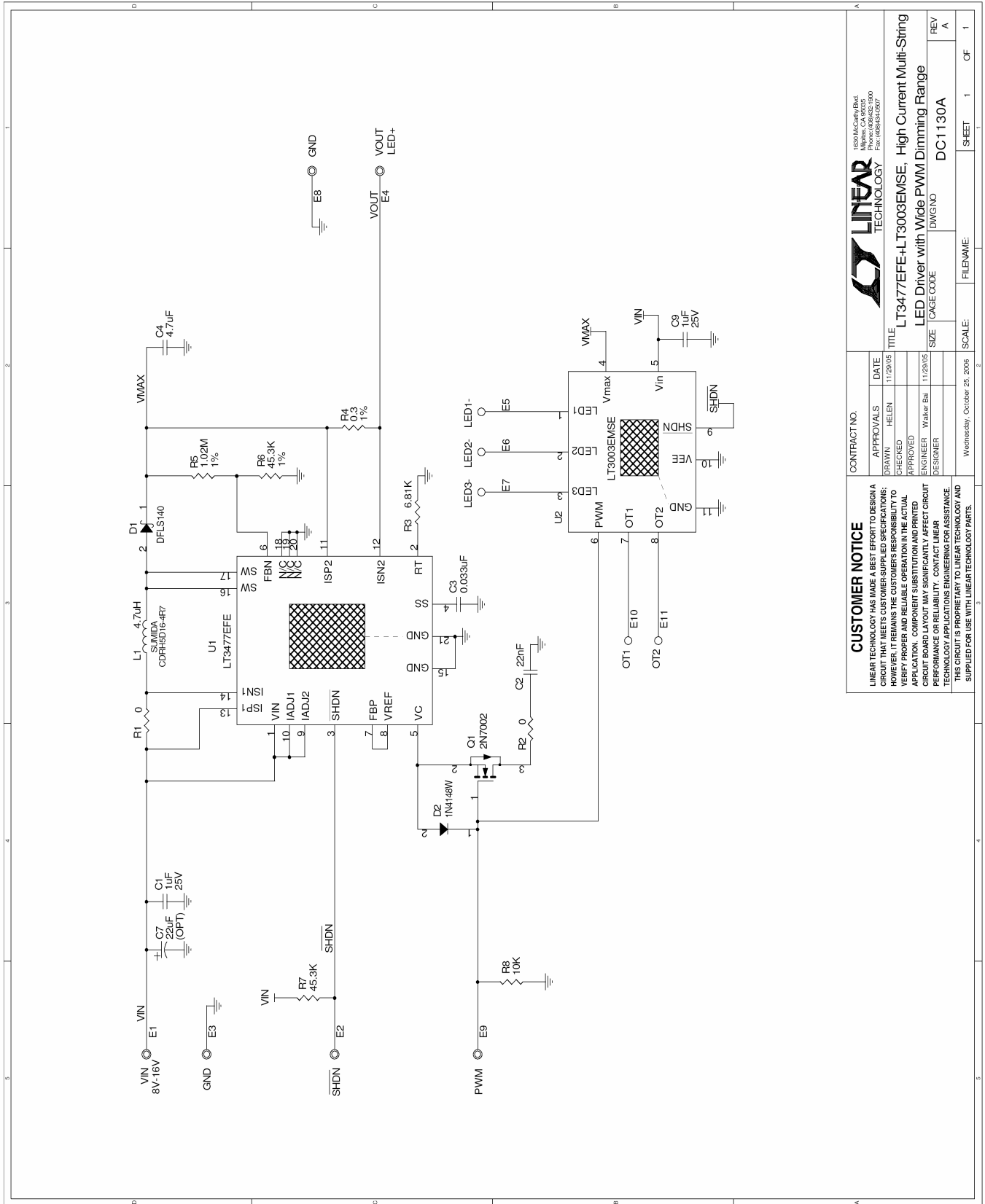


Figure 2. Measuring Input or Output Ripple

LT3477 AND LT3003



| | | | |
|---|-----------|---|--------------|
| CUSTOMER NOTICE | | CONTRACT NO. | |
| <p>LINEAR TECHNOLOGY HAS MADE A BEST EFFORT TO DESIGN A CIRCUIT THAT MEETS CUSTOMER-SUPPLIED SPECIFICATIONS. CUSTOMERS ARE RESPONSIBLE FOR VERIFYING THE ACTUAL PERFORMANCE OF THE CIRCUIT TO MEET THEIR APPLICATION. COMPONENT SUBSTITUTION AND PRINTED CIRCUIT BOARD LAYOUT MAY SIGNIFICANTLY AFFECT CIRCUIT PERFORMANCE OR RELIABILITY. CONTACT LINEAR TECHNOLOGY APPLICATIONS ENGINEERING FOR ASSISTANCE. THIS CIRCUIT IS PROPRIETARY TO LINEAR TECHNOLOGY AND SUPPLIED FOR USE WITH LINEAR TECHNOLOGY PARTS.</p> | | | |
| APPROVALS | DATE | TITLE | |
| CHECKED | 11/29/05 | LT3477FE-LT3003EMSE: High Current Multi-String LED Driver with Wide PWM Dimming Range | |
| APPROVED | 11/29/05 | SIZE | |
| ENGINEER: Walker Bui | DESIGNER: | DC1130A | |
| SCALE: Wednesday, October 25, 2006 | | FILENAME: | SHEET 1 OF 1 |



 1650 McCarthy Blvd.
 Milpitas, CA 95035
 Fax: (408)434-2070

| Item | Qty | Reference | Part Description | Manufacturer / Part # |
|--|-----|-----------------|------------------------------------|-----------------------------------|
| REQUIRED CIRCUIT COMPONENTS: | | | | |
| 1 | 2 | C1,C9 | CAP., X5R, 1uF,25V,10%, 0805 | AVX, 08053D105KAT2A |
| 2 | 1 | C2 | CAP., X7R, 22nF, 25V, 10%, 0402 | TDK, C1005X7R1E223K |
| 3 | 1 | C3 | CAP., X7R, 0.033uF, 16V,10%, 0402 | TDK, C1005X7R1C333K |
| 4 | 1 | C4 | CAP., X7R, 4.7uF, 50V,10%, 1210 | Murata, GRM32ER71H475KA88L |
| 5 | 1 | D1 | DIODE, SCHOTTKY RECT, POWERDI1 | DIODES INC, DFLS140-7 |
| 6 | 1 | D2 | DIODE, SWITCHING DIODE,SOD-123 | DIODES INC, 1N4148W-7-F |
| 7 | 1 | L1 | INDUCTOR., 4.7uH | SUMIDA, CDRH5D16NP-4R7NC |
| 8 | 1 | Q1 | N-CHANNEL MOSFET, SOT-23 | DIODES INC, 2N7002-7 |
| 9 | 1 | R3 | RES., CHIP, 6.81K, 1/16W,1%, 0402 | AAC, CR05-6811FM |
| 10 | 1 | R4 | RES., CHIP, 0.3, 1/16W, 1%, 0805 | THIN FILM INC, RL1220SR30-F |
| 11 | 1 | R5 | RES., CHIP, 1.02M, 1/16W 1%,0402 | VISHAY, CRCW04021M02FKED |
| 12 | 1 | R6 | RES., CHIP, 45.3K, 1/16W, 1%, 0402 | AAC, CR05-4532FM |
| 13 | 1 | U1 | I.C, LT3477EFE, TSSOP(4.4mm) | LINEAR TECH., LT3477EFE |
| 14 | 1 | U2 | I.C LT3003EMSE#PBF,10-lead, MSOP | LINEAR TECH., LT3003EMSE#PBF |
| ADDITIONAL DEMO BOARD CIRCUIT COMPONENTS: | | | | |
| 1 | 1 | C7 | CAP., TANT, 22uF, 25V, 20%, | AVX, TAJC226M025R |
| 2 | 1 | R1 | RES., CHIP, 0, 1/16W, 0805 | AAC, CJ10-000M |
| 3 | 1 | R2 | RES., CHIP, 0, 1/16W, 0402 | AAC, CJ05-000M |
| 4 | 1 | R7 | RES., CHIP, 45.3K, 1/16W, 1%, 0402 | AAC, CR05-4532FM |
| 5 | 1 | R8 | RES., CHIP, 10K, 1/16W, 1%, 0402 | VISHAY, CRCW0402103D |
| HARDWARE-FOR DEMO BOARD ONLY: | | | | |
| 1 | 4 | E1,E3,E4,E8 | TESTPOINT, TURRET, .095" | MILL-MAX, 2501-2-00-80-00-00-07-0 |
| 2 | 7 | E2,E5-E7,E9-E11 | TESTPOINT, TURRET, .065" | MILL-MAX, 2308-2-00-80-00-00-07-0 |



Стандарт Электрон Связь

Мы молодая и активно развивающаяся компания в области поставок электронных компонентов. Мы поставляем электронные компоненты отечественного и импортного производства напрямую от производителей и с крупнейших складов мира.

Благодаря сотрудничеству с мировыми поставщиками мы осуществляем комплексные и плановые поставки широчайшего спектра электронных компонентов.

Собственная эффективная логистика и склад в обеспечивает надежную поставку продукции в точно указанные сроки по всей России.

Мы осуществляем техническую поддержку нашим клиентам и предпродажную проверку качества продукции. На все поставляемые продукты мы предоставляем гарантию .

Осуществляем поставки продукции под контролем ВП МО РФ на предприятия военно-промышленного комплекса России , а также работаем в рамках 275 ФЗ с открытием отдельных счетов в уполномоченном банке. Система менеджмента качества компании соответствует требованиям ГОСТ ISO 9001.

Минимальные сроки поставки, гибкие цены, неограниченный ассортимент и индивидуальный подход к клиентам являются основой для выстраивания долгосрочного и эффективного сотрудничества с предприятиями радиоэлектронной промышленности, предприятиями ВПК и научно-исследовательскими институтами России.

С нами вы становитесь еще успешнее!

Наши контакты:

Телефон: +7 812 627 14 35

Электронная почта: sales@st-electron.ru

Адрес: 198099, Санкт-Петербург,
Промышленная ул, дом № 19, литера Н,
помещение 100-Н Офис 331