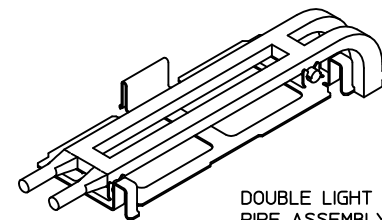
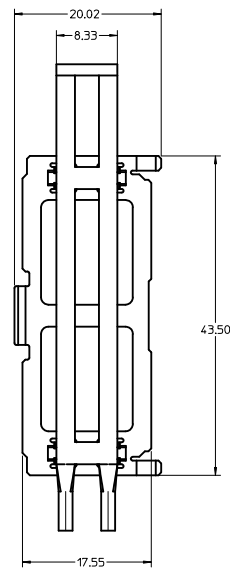
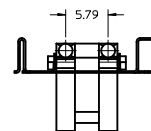
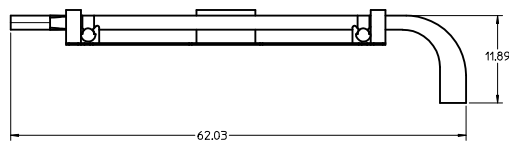
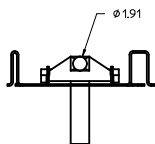


SINGLE LIGHT PIPE ASSEMBLY (74750-0030)



DOUBLE LIGHT PIPE ASSEMBLY (74750-0031)

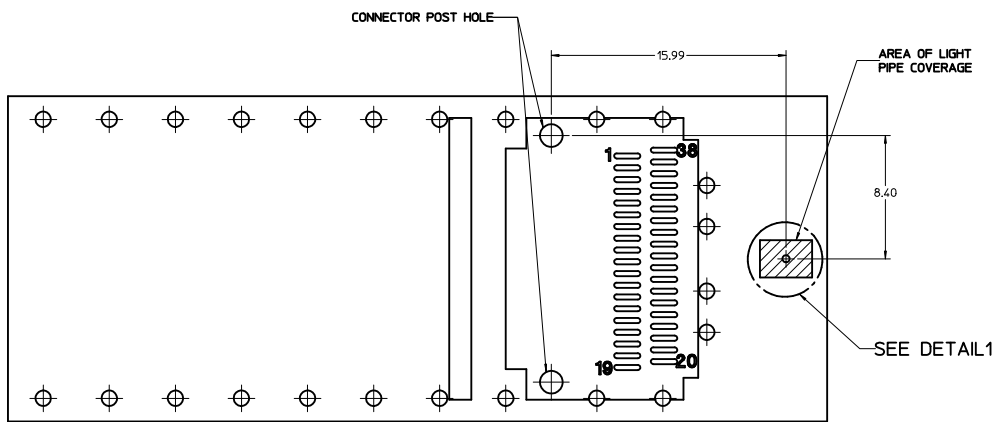


NOTES:

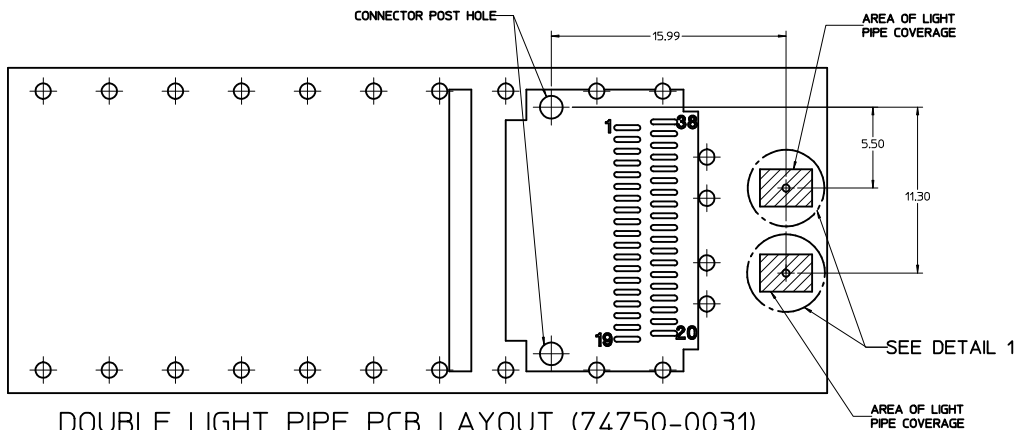
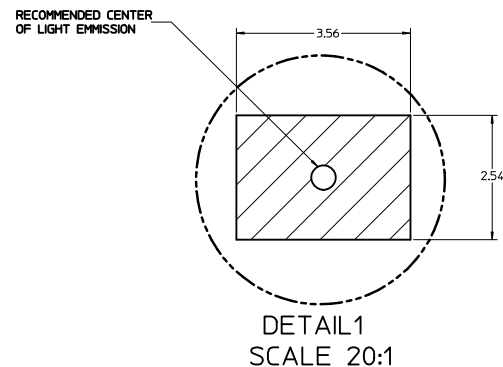
1. MATERIALS:
LIGHT PIPE CLIP: UNPLATED STAINLESS STEEL
LIGHT PIPE: CLEAR LEXAN
2. THESE LIGHT PIPE ASSEMBLIES TO BE USED WITH THE QSFP CAGE ASSEMBLY (74750-0001)
3. IT IS RECOMMENDED THAT THE CAGE ASSEMBLY BE PRESSED INTO THE PCB PRIOR TO ASSEMBLING THE LIGHT PIPE ASSEMBLY
4. RECOMMENDED LED'S INCLUDE THE FOLLOWING MANUFACTURERS:
DIALIGHT: 597-77X1-5XX SERIES
CHICAGO MINIATURE: 7016 SERIES
KINGBRIGHT: APBL3025 SERIES (BICOLOR)
APL3015 SERIES (SINGLE COLOR)
5. THIS PRODUCT MEETS THE RESTRICTION OF HAZARDOUS SUBSTANCES IN ELECTRICAL AND ELECTRONIC EQUIPMENT (RoHS) DIRECTIVE (2002/95/EC)

ENTER DESCRIPTION IEC NO. USY2010-0460 DRAWN BY CHYKORUSSELL 2007/01/10 CHECKED BY APPRO:RAHMOOD 2010/03/31	QUALITY SYMBOLS ▽=0 ▽=0	GENERAL TOLERANCES (UNLESS SPECIFIED)		DIMENSION STYLE MM ONLY	SCALE 3:1	DESIGN UNITS METRIC	<input checked="" type="checkbox"/> THIRD ANGLE PROJECTION	
		4 PLACES ± mm	± INCH	DRAWN BY DATE CHIRSCHY 2007/01/10	TITLE QSFP LIGHT PIPE ASSEMBLIES			
		3 PLACES ±	±	CHECKED BY DATE BRUSSELL 2007/01/10	MOLEX INCORPORATED			
		2 PLACES ± 0.13	±	APPROVED BY DATE RAHMOOD 2010/03/31	WATERL. NO. SEE ABOVE	DOCUMENT NO. SD-74750-0030	SHEET NO. 1 OF 4	
1 PLACE ± 0.25	±	ANGULAR ± 1°	THIS DRAWING CONTAINS INFORMATION THAT IS PROPRIETARY TO MOLEX INCORPORATED AND SHOULD NOT BE USED WITHOUT WRITTEN PERMISSION					
DRAFT WHERE APPLICABLE MUST REMAIN WITHIN DIMENSIONS								

20 19 18 17 16 15 14 13 12 11 10 9 8 7 6 5 4 3 2 1



SINGLE LIGHT PIPE PCB LAYOUT (74750-0030)

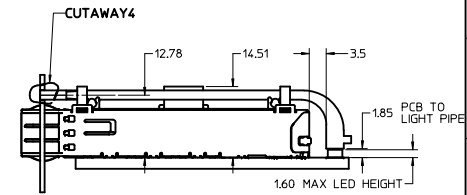
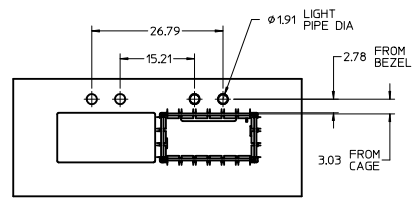
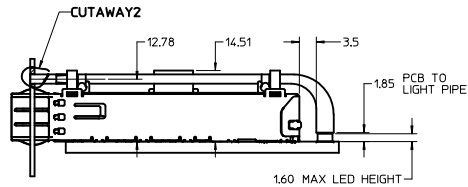
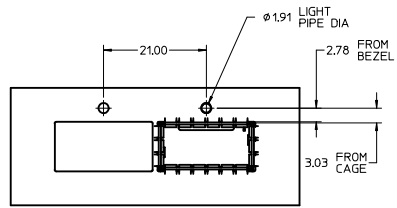
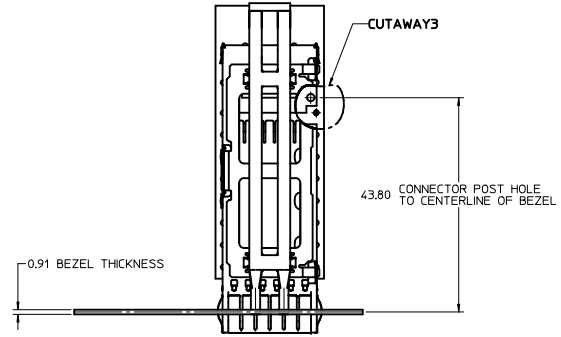
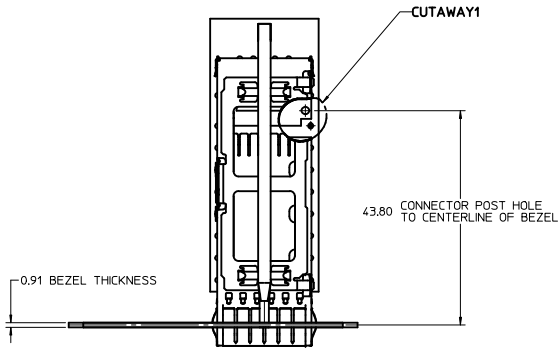


DOUBLE LIGHT PIPE PCB LAYOUT (74750-0031)

ENTER DESCRIPTION IEC NO. USY2010-0460 DRAWN BY CHIRRSCHY 2008/07/08 CHECKED BY CHYD BRUSSELL 2007/01/10 APPROVED BY APPR:RAHMOOD 2010/03/31	QUALITY SYMBOLS	GENERAL TOLERANCES (UNLESS SPECIFIED)	DIMENSION STYLE	SCALE	DESIGN UNITS	THIRD ANGLE PROJECTION																		
	$\nabla=0$ $\nabla=0$	<table border="1"> <tr> <th></th> <th>mm</th> <th>INCH</th> </tr> <tr> <td>4 PLACES</td> <td>±---</td> <td>±---</td> </tr> <tr> <td>3 PLACES</td> <td>±---</td> <td>±---</td> </tr> <tr> <td>2 PLACES</td> <td>±0.13</td> <td>±---</td> </tr> <tr> <td>1 PLACE</td> <td>±0.25</td> <td>±---</td> </tr> <tr> <td colspan="3">ANGULAR ± 1°</td> </tr> </table>		mm	INCH	4 PLACES	±---	±---	3 PLACES	±---	±---	2 PLACES	±0.13	±---	1 PLACE	±0.25	±---	ANGULAR ± 1°			MM ONLY	6:1	METRIC	
		mm	INCH																					
	4 PLACES	±---	±---																					
3 PLACES	±---	±---																						
2 PLACES	±0.13	±---																						
1 PLACE	±0.25	±---																						
ANGULAR ± 1°																								
DRAFT WHERE APPLICABLE MUST REMAIN WITHIN DIMENSIONS	DRAWN BY DATE CHIRRSCHY 2007/01/10 CHECKED BY DATE BRUSSELL 2007/01/10 APPROVED BY DATE RAHMOOD 2010/03/31	TITLE	QSFP LIGHT PIPE ASSEMBLIES																					
MATERIAL NO. SEE SHEET 1	DOCUMENT NO. SD-74750-0030	MOLEX INCORPORATED			SHEET NO. 2 OF 4																			

19 18 17 16 15 14 13 12 11 10 9 8 7 6 5 4 3 2 1

20 19 18 17 16 15 14 13 12 11 10 9 8 7 6 5 4 3 2 1



ENTER DESCRIPTION IEC NO. USY2010-0460 DRAWN BY CHIRRSCHY 2008/07/08 CHECKED BY CHYDORUSSELL 2007/01/10 APPROVED BY APPR:RAHMOOD 2010/03/31	QUALITY SYMBOLS	GENERAL TOLERANCES (UNLESS SPECIFIED)	DIMENSION STYLE	SCALE	DESIGN UNITS	THIRD ANGLE PROJECTION	
	▽=0 ▽=0	mm INCH 4 PLACES ± --- ± --- 3 PLACES ± --- ± --- 2 PLACES ± 0.13 ± --- 1 PLACE ± 0.25 ± --- ANGULAR ± 1°	MM ONLY	2:1	METRIC	TITLE QSFP LIGHT PIPE ASSEMBLIES	
	DESCRIPTION RAHMOOD 2010/03/31	DRAFT WHERE APPLICABLE MUST REMAIN WITHIN DIMENSIONS	DRAWN BY DATE CHIRRSCHY 2007/01/10 CHECKED BY DATE BRUSSELL 2007/01/10 APPROVED BY DATE RAHMOOD 2010/03/31	WATERL. NO. SEE SHEET 1	DOCUMENT NO. SD-74750-0030	Molex MOLEX INCORPORATED	SHEET NO. 3 OF 4
	SIZE D	THIS DRAWING CONTAINS INFORMATION THAT IS PROPRIETARY TO MOLEX INCORPORATED AND SHOULD NOT BE USED WITHOUT WRITTEN PERMISSION					

19 18 17 16 15 14 13 12 11 10 9 8 7 6 5 4 3 2 1

DATE	REV	DESCRIPTION
2008/04/03	A	INITIAL RELEASE
2009/04/13	B	UPDATED VIEWS TO SHOW TOOLING CHANGES IN LIGHT PIPE CLIP AND CAGE (NO DIMENSIONS AFFECTED)

ENTER DESCRIPTION IEC NO: USY2010-0460 DRAWN BY: CHYKORUSSCHY 2008/07/08 CHECKED BY: CHYKORUSSCHY 2007/01/10 APPR: RMAHMOOD 2010/03/31	QUALITY SYMBOLS ▽=0 ▽=0	GENERAL TOLERANCES (UNLESS SPECIFIED) <table border="1"> <thead> <tr> <th></th> <th>mm</th> <th>INCH</th> </tr> </thead> <tbody> <tr> <td>4 PLACES</td> <td>±---</td> <td>±---</td> </tr> <tr> <td>3 PLACES</td> <td>±---</td> <td>±---</td> </tr> <tr> <td>2 PLACES</td> <td>±0.13</td> <td>±---</td> </tr> <tr> <td>1 PLACE</td> <td>±0.25</td> <td>±---</td> </tr> </tbody> </table> ANGULAR ± 1°		mm	INCH	4 PLACES	±---	±---	3 PLACES	±---	±---	2 PLACES	±0.13	±---	1 PLACE	±0.25	±---	DIMENSION STYLE MM ONLY	SCALE 1:1	DESIGN UNITS METRIC	THIRD ANGLE PROJECTION
		mm	INCH																		
	4 PLACES	±---	±---																		
	3 PLACES	±---	±---																		
2 PLACES	±0.13	±---																			
1 PLACE	±0.25	±---																			
DRAWN BY: CHIRRSCHY 2007/01/10 CHECKED BY: BRUSSELL 2007/01/10 APPROVED BY: RMAHMOOD 2010/03/31	DRAFT WHERE APPLICABLE MUST REMAIN WITHIN DIMENSIONS		WATERL. NO. SEE SHEET 1	DOCUMENT NO. SD-74750-0030	TITLE QSFP LIGHT PIPE ASSEMBLIES	SHEET NO. 4 OF 4															
MATERIAL NO.			Molex MOLEX INCORPORATED			THIS DRAWING CONTAINS INFORMATION THAT IS PROPRIETARY TO MOLEX INCORPORATED AND SHOULD NOT BE USED WITHOUT WRITTEN PERMISSION															
SIZE D			THIS DRAWING CONTAINS INFORMATION THAT IS PROPRIETARY TO MOLEX INCORPORATED AND SHOULD NOT BE USED WITHOUT WRITTEN PERMISSION																		



Стандарт Электрон Связь

Мы молодая и активно развивающаяся компания в области поставок электронных компонентов. Мы поставляем электронные компоненты отечественного и импортного производства напрямую от производителей и с крупнейших складов мира.

Благодаря сотрудничеству с мировыми поставщиками мы осуществляем комплексные и плановые поставки широчайшего спектра электронных компонентов.

Собственная эффективная логистика и склад в обеспечивает надежную поставку продукции в точно указанные сроки по всей России.

Мы осуществляем техническую поддержку нашим клиентам и предпродажную проверку качества продукции. На все поставляемые продукты мы предоставляем гарантию .

Осуществляем поставки продукции под контролем ВП МО РФ на предприятия военно-промышленного комплекса России , а также работаем в рамках 275 ФЗ с открытием отдельных счетов в уполномоченном банке. Система менеджмента качества компании соответствует требованиям ГОСТ ISO 9001.

Минимальные сроки поставки, гибкие цены, неограниченный ассортимент и индивидуальный подход к клиентам являются основой для выстраивания долгосрочного и эффективного сотрудничества с предприятиями радиоэлектронной промышленности, предприятиями ВПК и научно-исследовательскими институтами России.

С нами вы становитесь еще успешнее!

Наши контакты:

Телефон: +7 812 627 14 35

Электронная почта: sales@st-electron.ru

Адрес: 198099, Санкт-Петербург,
Промышленная ул, дом № 19, литера Н,
помещение 100-Н Офис 331