

TOSHIBA Bi-CMOS INTEGRATED CIRCUIT SILICON MONOLITHIC

# TB62785NG, TB62785FTG

7-SEGMENT DRIVERS WITH BUILT-IN DECODERS  
(COMMON ANODE CAPABILITY, MAXIMUM 4-DIGIT CONTROL)

The TB62785NG / TB62785FTG are multifunctional, compact, 7-segment LED display drivers.

These ICs can directly drive 7-segment displays and individual LEDs, and can control either a 4-digit display with decimal points, or 32 individual LEDs.

These ICs can also be used with common-anode displays. Their outputs are constant current, the ampere levels at which are set using an external resistor.

A synchronous serial port connects the IC to the CPU.

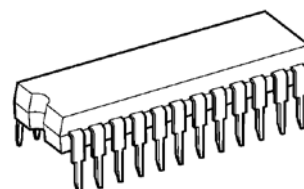
The different modes of control provided by this device including Duty Control Register Set, Digit Set, Decode Set and Standby Set, are all based on every 16-bit of serial data.

## FEATURES

- Control circuit power supply  
:  $V_{DD} = 4.5$  to  $5.5$  V
- Digit output rating  
:  $17$  V /  $-400$  mA
- Decoder output rating  
:  $17$  V /  $50$  mA
- Built-in decoder  
: Decodes the numerals 0 to 9, certain alphabetic characters, and of course blanks code.
- Digit control function  
: Can scan digit outputs DIG-0 to DIG-3 when connected to the common anode pins of a 7-segment display.
- Maximum transmission frequency  
:  $f_{CLK} = 15$  MHz
- Decoder outputs (OUT-a to OUT-Dp)  
Output current can be set up to a 40mA maximum using an external resistor.
- Constant current tolerance ( $T_a = 25^\circ\text{C}$ ,  $V_{DD} = 5.0$  V)  
: Variation between bits =  $\pm 7\%$ , variation between devices (including variation between bits) =  $\pm 15\%$  at  $V_{CE} \geq 0.7$  V
- Package
 

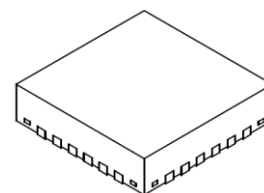
|              |                        |
|--------------|------------------------|
| : TB62785NG  | SDIP24-P-300-1.78      |
| : TB62785FTG | P-VQFN24-0404-0.50-001 |

TB62785NG



SDIP24-P-300-1.78  
Weight 1.22g (typ.)

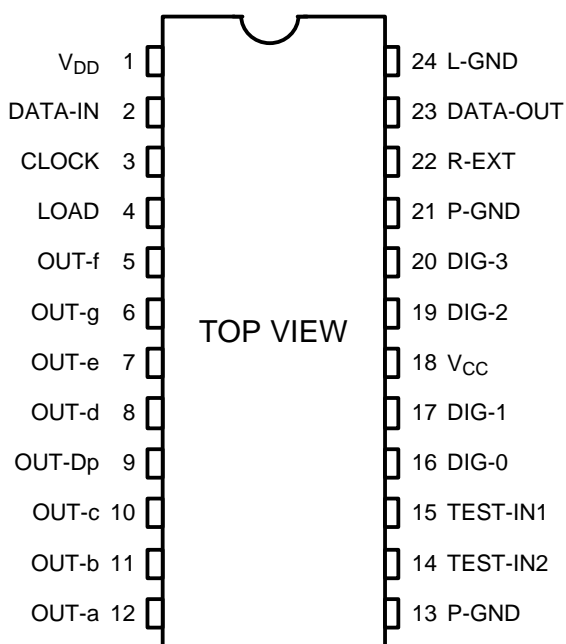
TB62785FTG



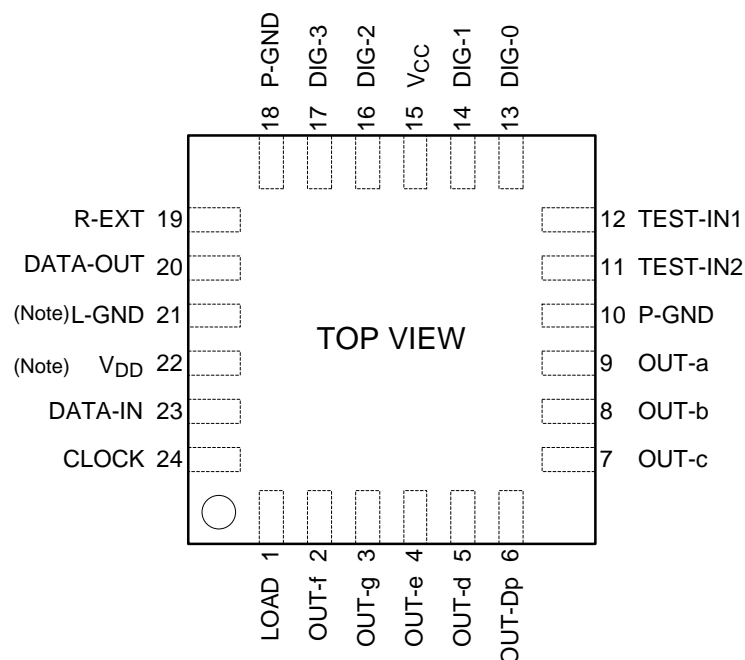
P-VQFN24-0404-0.50-001  
Weight 0.037g (typ.)

## PIN ASSIGNMENT (Top view)

< TB62785NG (SDIP24) >

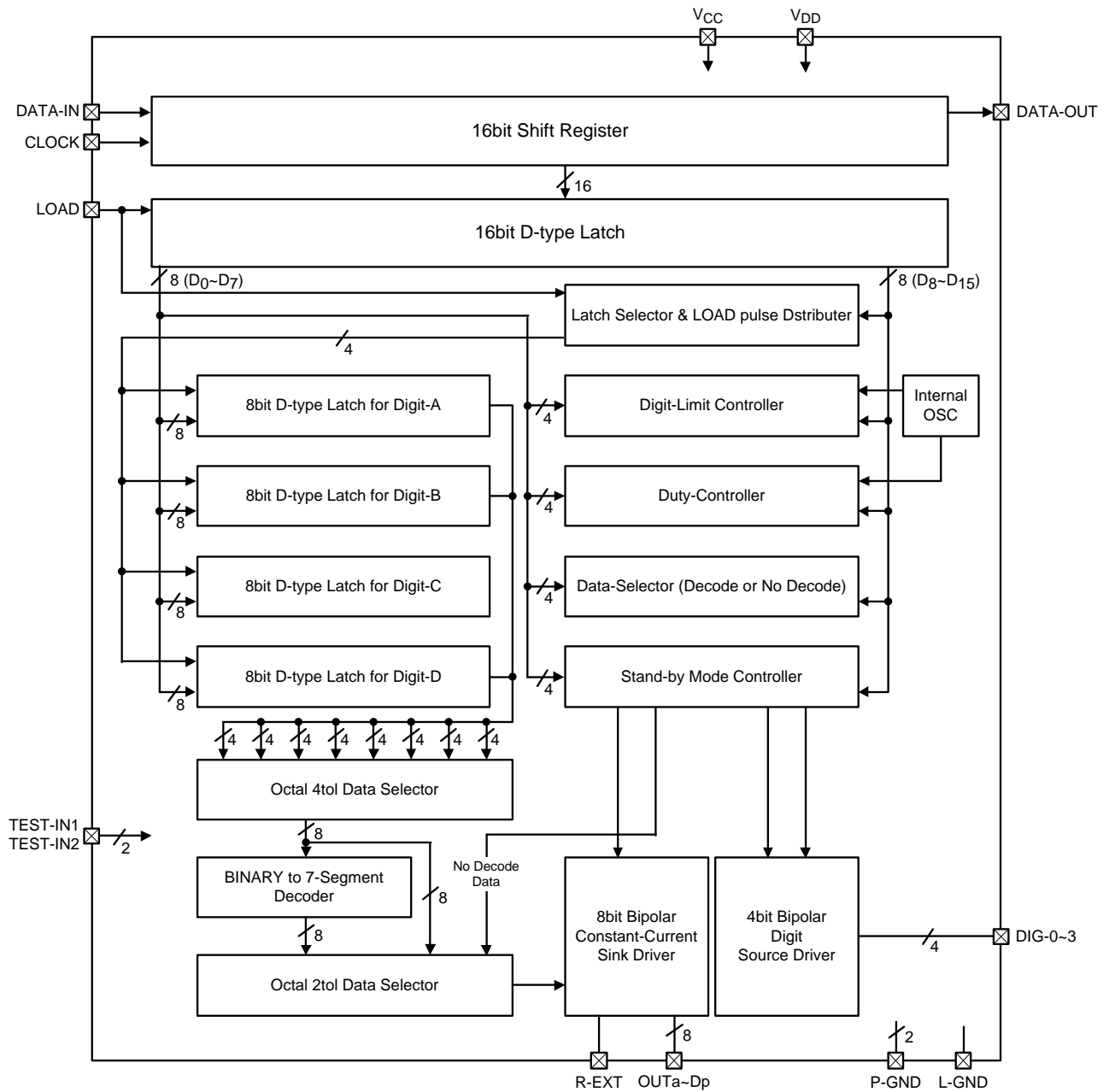


< TB62785FTG (VQFN24) >



\*Note: VDD and L-GND are adjacent in TB62785FTG. (21pin / 22pin)  
Please be careful.

### BLOCK DIAGRAM



### PIN FUNCTIONS

#### TB62785NG (SDIP24)

| PIN NUMBER     | I/O (Note) | PIN NAME        | FUNCTION  |
|----------------|------------|-----------------|---|
| 1              | P          | V <sub>DD</sub> | 5 V power pin.  |
| 2              | I          | DATA-IN (DI)    | Serial data input pin.  |
| 3              | I          | CLOCK (CK)      | Clock input pin. The shift register shifts data on the clock's rising edge.   |
| 4              | I          | LOAD (LD)       | Load signal input pin. The data in the D <sub>8</sub> to D <sub>15</sub> are read on the rising edge and the load register is selected. And, the data of the D <sub>0</sub> to D <sub>7</sub> which corresponded each register on the falling edge. |
| 5 to 12        | O          | OUT-a to OUT-Dp | Segment drive output pins. The a to Dp outputs correspond to the seven segments. These pins output constant sink current. Connect each of these pins to the corresponding LED's cathode.  |
| 13, 21         | P          | P-GND           | Ground pins, There are two which can be used to ground the output OUT-a to OUT-Dp pins.   |
| 14             | I          | TEST-IN2        | Product test pin. In normal use, be sure to connect to ground.  |
| 15             | I          | TEST-IN1        | Product test pin. In normal use, be sure to connect to ground.  |
| 16, 17, 19, 20 | O          | DIG-0 to DIG-3  | Digit output pins. Each of these pins can control one of the four seven-segment digits in a display. These pins output the V <sub>CC</sub> pin voltage as a source current output. Connect these pins to the LED anodes.                            |
| 18             | P          | V <sub>CC</sub> | Power pin for digit output.   |
| 22             | O          | R-EXT           | Current setting pin for the OUT-a to OUT-Dp pins. Connect a resistor between this pin and ground when setting the current.  |
| 23             | O          | DATA-OUT (DO)   | Serial data output pin. Use when TB62785NG/ TB62785FTG device is used in cascade connections.   |
| 24             | P          | L-GND           | Ground pin for logic and analog circuits.   |

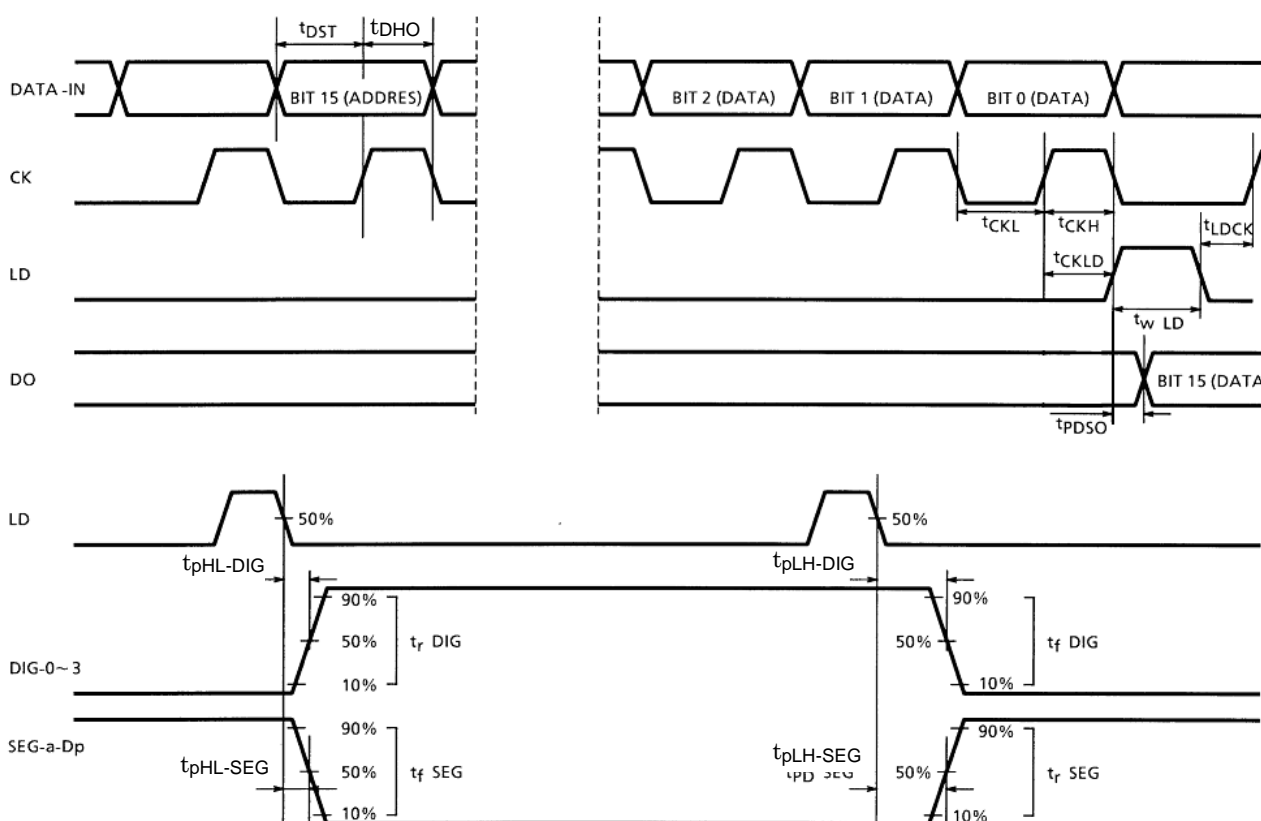
\*Note Explanation of I/O: I = Input Terminal, O = Output Terminal, P = Power Supply

### TB62785FTG (VQFN24)

| PIN NUMBER     | I/O (Note) | PIN NAME                | FUNCTION  |
|----------------|------------|-------------------------|---|
| 1              | I          | LOAD (LD)               | Load signal input pin. The data in the D <sub>8</sub> to D <sub>15</sub> are read on the rising edge and the load register is selected. And, the data of the D <sub>0</sub> to D <sub>7</sub> which corresponded each register on the falling edge. |
| 2 to 9         | O          | OUT-a to D <sub>p</sub> | Segment drive output pins. The A to D <sub>p</sub> outputs correspond to the seven segments. These pins output constant sink current. Connect each of these pins to the corresponding LED's cathode.  |
| 10, 18         | P          | P-GND                   | Ground pins, There are two which can be used to ground the output OUT-a to OUT-D <sub>p</sub> pins.   |
| 11             | I          | TEST-IN2                | Product test pin. In normal use, be sure to connect to ground.  |
| 12             | I          | TEST-IN1                | Product test pin. In normal use, be sure to connect to ground.  |
| 13, 14, 16, 17 | O          | DIG-0 to DIG-3          | Digit output pins. Each of these pins can control one of the four seven-segment digits in a display. These pins output the V <sub>CC</sub> pin voltage as a source current output. Connect these pins to the LED anodes.                            |
| 15             | P          | V <sub>CC</sub>         | Power pin for digit output.   |
| 19             | O          | R-EXT                   | Current setting pin for the OUT-a to OUT-D <sub>p</sub> pins. Connect a resistor between this pin and ground when setting the current.  |
| 20             | O          | DATA-OUT (DO)           | Serial data output pin. Use when TB62785NG/TB62785FTG device is used in cascade connections.  |
| 21             | P          | L-GND                   | Ground pin for logic and analog circuits.   |
| 22             | P          | V <sub>DD</sub>         | 5 V power pin.  |
| 23             | I          | DATA-IN (DI)            | Serial data input pin.  |
| 24             | I          | CLOCK (CK)              | Clock input pin. The shift register shifts data on the clock's rising edge.   |

\*Note Explanation of I/O: I = Input Terminal, O = Output Terminal, P = Power Supply

### TIMING DIAGRAM



### DATA INPUT

- Transfer data to the DATA-IN pin on every 16-bit combining address (8bits) and data (8bits). After the 16<sup>th</sup> clock signal input following this data transfer input a load signal from the LD pin.
- Input the load signal using an Active High pulse. The register address is set on the rising edge of the load pulse. On the subsequent falling edge, the data are read as data of the mode of the register.

## DESCRIPTION OF OPERATION

- Data input (DATA-IN, CLOCK, LOAD)

The data are input serially using the DATA-IN pin. The data input interface consists of a total of three inputs: DATA-IN, LOAD, and CLOCK.

Binary code stored in the 16-bit shift register offers control modes including duty Control Register Set, Digitset, Decode Set, and Standby Set,

The data are shifted on the rising edge of the clock, starting from the MSB. Cascade-connecting TB62785NG/TB62785FTG devices provides capability for controlling a larger number of digits.

The serial data in the 16-bit shift register are used as follows: the four bits D15 (MSB) to D12 select the IC operating mode (Table 1), while D11 to D8 select the register corresponding to the operating mode (Table 2).

Bits D7 to D0 (LSB) of the 16-bit shift register are used for detail settings, such as number of digits in use, character settings in each digit, and light intensity.

The internal registers are loaded on the rising edge of the LOAD signal, which causes loading of data from an external source into the D15 (MSB) to D8 bits of the shift register, operating mode and the corresponding register selection data. On the subsequent falling edge, the detail setting data of D7 to D0 (LSB) are loaded.

Normally LOAD is Low. After a serial transfer of 16bits, the input of a High-level pulse loads the data.

Note the following caution: Use the D15 to D8 setting and the D7 to D0 detail data setting as a pair. If only the D7 to D0 data are input without setting D15 to D8 an error condition may result, in which the device will not operate normally. If the current mode is set again by a new signal, the data for D15 to D8 must also be re-input.

- Operating precautions

At power-on or after operation in Clear mode (in initial state), set the IC to Normal mode again. Otherwise, the IC will not drive the LED.

Operating the IC in Blank mode (all lights off) or in All On mode (all lights lit) does not affect the internal data. Setting the IC to Normal mode again continues the LED lighting in the state governed by the settings made immediately before mode change.

Normal mode (not Shut Down, Clear, Blank, or All On mode) continues the operations set in Load Register mode. In Normal mode, operations are governed by any new settings made in the Load Register, as soon as the changed setting values are loaded.

- Operating modes (Table 1.)

These ICs support the following five operating modes:

- Blank** : Forcibly turns OFF the constant-current output both for data and for digit setting. This mode is not affected by the values in bits D11 to D0.
- Normal Operate** : Used for display operations after the settings of the digits are complete. This mode is not affected by the values in bits D11 to D0. Note that setting this mode without making any other settings will cause display of the numeral 0.
- Load Register** : Used for the detail settings of the Duty Control Register, for setting Decode / No Decode, for inputting display data, and for setting the number of digits to drive. D11 to D0 of the shift register are used for the detail settings of the digits currently being driven (Table 2).
- All On** : Forcibly turns ON the data-side constant-current output. This mode is not affected by D11 to D0.  
The initial setting is four digits. When the digits must be changed, use Load Register mode to set the number of digits to drive.
- Standby** : Used to set Standby state (in which internal data are not cleared) and to clear data (initialization). The settings in D3 to D0 of the shift register determine the choice between standby state or initialization.

**Table 1 Operating mode settings**

|  | REGISTER DATA |     |     |     |           |          |          |          | INITIAL SETTING |
|--|---------------|-----|-----|-----|-----------|----------|----------|----------|-----------------|
|  | D15           | D14 | D13 | D12 | D11 to D8 | D7 to D4 | D3 to D0 | HEX CODE |                 |
| BLANK (OUT-n & DIG-0 to 3 ALL-OFF)         | 0             | 0   | 0   | 0   | -         | -        | -        | 0---H    | *               |
| NORMAL (OPERATION)                         | 0             | 0   | 0   | 1   | -         | -        | -        | 1---H    | -               |
| LOAD REGISTER (DUTY, DECODE, DIGIT & DATA) | 0             | 0   | 1   | 0   | X         | X        | X        | 2XXXH    | -               |
| ALL ON (OUTn ALL-ON)                       | 0             | 0   | 1   | 1   | -         | -        | -        | 3---H    | -               |
| STAND-BY                                   | 0             | 1   | 0   | 0   | -         | -        | X        | 4--XH    | -               |

X = Input H or L. "-" = Are not affected by the truth table.



- Load Register Selection modes (Table 2)

These modes select the register to provide the data to control the IC operation. The Load Register selection mode is determined by the settings of D15 to D12 and D11 to D8 of the shift register.

1. Duty Register : The data in D7 to D0 of this register set the digit output duty cycle.  
Duty settings can be made in 16 steps from 0 / 16 to 15 / 16.  
(See Table 3)
2. Decode & Digit Register : Sets Decode / No Decode and the number of digits to drive. Decode can be set using D7 to D4.  
The number of digits driven can be set using D3 to D0. Decode / No Decode and the number of digits driven are set simultaneously.
3. Data registers 0 to 3 : Set the display data corresponding to DIG0 to DIG3 respectively.  
D7 to D0 of the shift register are used to set the display data.

**Table 2 Load register selection**

|                              | REGISTER DATA |     |     |    |    |          |          |          |
|------------------------------|---------------|-----|-----|----|----|----------|----------|----------|
|                              | D15 to D12    | D11 | D10 | D9 | D8 | D7 to D4 | D3 to D0 | HEX CODE |
| LOAD DUTY REGISTER           | 2H            | 0   | 0   | 0  | 0  | X        | X        | 20XXH    |
| LOAD DECODE & DIGIT REGISTER | 2H            | 0   | 0   | 0  | 1  | X        | X        | 21XXH    |
| LOAD DATA REGISTER 0         | 2H            | 0   | 0   | 1  | 0  | X        | X        | 22XXH    |
| LOAD DATA REGISTER 1         | 2H            | 0   | 0   | 1  | 1  | X        | X        | 23XXH    |
| LOAD DATA REGISTER 2         | 2H            | 0   | 1   | 0  | 0  | X        | X        | 24XXH    |
| LOAD DATA REGISTER 3         | 2H            | 0   | 1   | 0  | 1  | X        | X        | 25XXH    |

X = Input H or L. "-" = Are not affected by the truth table.

## DUTY CONTROL REGISTER SETTINGS

- Duty Control Register detail settings and operation (Table 3)

Writing 20H to D15 to D8 and writing 0 to FH to D3 to D0 sets the duty cycle shown in the following table for the digit-side source driver output. The duty cycle can be set in 16 steps.

The initial setting is 15 / 16. After Data Clear, the setting is also 15 / 16.

The current settings continue until changed (by reset execution, or to the initial state, Data Clear state, or standby state).

**Table 3 Duty control register settings**

| DUTY CYCLE | REGISTER DATA |          |    |    |    |    |          | INITIAL SETTING |
|------------|---------------|----------|----|----|----|----|----------|-----------------|
|            | D15 to D8     | D7 to D4 | D3 | D2 | D1 | D0 | HEX CODE |                 |
| 0 / 16     | 20H           | -        | 0  | 0  | 0  | 0  | 20X0H    | -               |
| 1 / 16     | 20H           | -        | 0  | 0  | 0  | 1  | 20X1H    | -               |
| 2 / 16     | 20H           | -        | 0  | 0  | 1  | 0  | 20X2H    | -               |
| 3 / 16     | 20H           | -        | 0  | 0  | 1  | 1  | 20X3H    | -               |
| 4 / 16     | 20H           | -        | 0  | 1  | 0  | 0  | 20X4H    | -               |
| 5 / 16     | 20H           | -        | 0  | 1  | 0  | 1  | 20X5H    | -               |
| 6 / 16     | 20H           | -        | 0  | 1  | 1  | 0  | 20X6H    | -               |
| 7 / 16     | 20H           | -        | 0  | 1  | 1  | 1  | 20X7H    | -               |
| 8 / 16     | 20H           | -        | 1  | 0  | 0  | 0  | 20X8H    | -               |
| 9 / 16     | 20H           | -        | 1  | 0  | 0  | 1  | 20X9H    | -               |
| 10 / 16    | 20H           | -        | 1  | 0  | 1  | 0  | 20XAH    | -               |
| 11 / 16    | 20H           | -        | 1  | 0  | 1  | 1  | 20XBH    | -               |
| 12 / 16    | 20H           | -        | 1  | 1  | 0  | 0  | 20XCH    | -               |
| 13 / 16    | 20H           | -        | 1  | 1  | 0  | 1  | 20XDH    | -               |
| 14 / 16    | 20H           | -        | 1  | 1  | 1  | 0  | 20XEH    | -               |
| 15 / 16    | 20H           | -        | 1  | 1  | 1  | 1  | 20XFH    | *               |

X = Input H or L. "-" = Are not affected by the truth table.

## DIGIT SETTINGS

- Setting the number of digits (Table 4)

Writing 21H to D15 to D8 and at the same step writing 0H to 3H to D3 to D0 sets the number of digits to a maximum of four the display. The initial setting is four digits, and four will also be set by a Data Clear.

The current settings continue until changed (by reset execution, or to the initial state, Data Clear state, or standby state).

When changing the number of digits, also set D7 to D4.

**Table 4 Digit settings**

|                       | REGISTER DATA |          |    |    |    |    |          | INITIAL SETTING |
|-----------------------|---------------|----------|----|----|----|----|----------|-----------------|
|                       | D15 to D8     | D7 to D4 | D3 | D2 | D1 | D0 | HEX CODE |                 |
| ACTIVATED DIG--0 ONLY | 21H           | X        | 0  | 0  | 0  | 0  | 21X0H    | -               |
| ACTIVATED DIG--0 to 1 | 21H           | X        | 0  | 0  | 0  | 1  | 21X1H    | -               |
| ACTIVATED DIG--0 to 2 | 21H           | X        | 0  | 0  | 1  | 0  | 21X2H    | -               |
| ACTIVATED DIG--0 to 3 | 21H           | X        | 0  | 0  | 1  | 1  | 21X3H    | *               |

X = Input H or L. "-" = Are not affected by the truth table.

## DECODE SETTINGS

- Decode settings (Table 5)

The settings for Decode are the same as the settings for the number of digits, described under setting, above.

Writing 21H to D15 to D8 and writing 0 to 1H to D7 to D4 set Decode mode.

When using this IC for controlling the lighting on individual LEDs used for a dot matrix rather than a 7-segment display, set to No Decode.

As Table 6 shows, D0 in the data register is used to turn OUT-a ON and OFF ; D1 turns OUT-b ON and OFF.

The initial setting is Decode mode, and Decode mode will also be set by a Data Clear.

The current settings continue until changed (by reset execution, or to the initial state, Data Clear state, or standby state).

Since D3 to D0 are also used for setting the number of digits, when changing the Decode setting, also set D3 to D0.

**Table 5 Decode settings**

|                          | REGISTER DATA |    |    |    |    |          |          | INITIAL SETTING |
|--------------------------|---------------|----|----|----|----|----------|----------|-----------------|
|                          | D15 to D8     | D7 | D6 | D5 | D4 | D3 to D0 | HEX CODE |                 |
| PASS DECODER (NO DECODE) | 21H           | 0  | 0  | 0  | 0  | X        | 210XH    | -               |
| DECODE                   | 21H           | 0  | 0  | 0  | 1  | X        | 211XH    | *               |

X = Input H or L. "-" = Are not affected by the truth table.

THE FOLLOWING TABLE SHOWS THE CORRESPONDENCE BETWEEN THE SERIAL DATA AND THE OUTPUT PINS WHEN NO DECODE IS SET

**Table 6 Correspondence between serial data and output pins in no decode mode**

| REGISTER DATA  | OUTPUT | INITIAL STATE | NOTE  |
|----------------|--------|---------------|---|
| D <sub>0</sub> | OUT-a  | L             | Output is ON when data = H and OFF when data = L. |
| D <sub>1</sub> | OUT-b  | L             |   |
| D <sub>2</sub> | OUT-c  | L             |   |
| D <sub>3</sub> | OUT-d  | L             |   |
| D <sub>4</sub> | OUT-e  | L             |   |
| D <sub>5</sub> | OUT-f  | L             |   |
| D <sub>6</sub> | OUT-g  | L             |   |
| D <sub>7</sub> | OUT-Dp | L             |   |

## STANDBY SETTINGS

- Standby mode settings and operation (Table 7)

Writing 4H to D<sub>15</sub> to D<sub>12</sub> and writing 0H to D<sub>3</sub> to D<sub>0</sub> sets Standby mode. Writing 4H to D<sub>15</sub> to D<sub>12</sub> and writing 1H to D<sub>3</sub> to D<sub>0</sub> sets All Data Clear mode.

Standby mode maintains the settings made immediately before this mode came in force, turns the output current OFF, and controls the bias current flowing in the internal circuits. All Data Clear resets all settings to their initial states.

**Table 7 Standby settings**

|                         | REGISTER DATA                     |                                  |                |                |                |                | HEX CODE |
|-------------------------|-----------------------------------|----------------------------------|----------------|----------------|----------------|----------------|----------|
|                         | D <sub>15</sub> to D <sub>8</sub> | D <sub>7</sub> to D <sub>4</sub> | D <sub>3</sub> | D <sub>2</sub> | D <sub>1</sub> | D <sub>0</sub> |          |
| STANDBY (NO DATA CLEAR) | 4-H                               | -                                | 0              | 0              | 0              | 0              | 4XX0H    |
| ALL DATA CLEAR          | 4-H                               | -                                | 0              | 0              | 0              | 1              | 4XX1H    |

X = Input H or L. "-" Are not affected by the truth table.

## LIST OF CHARACTER GENERATOR DECODING DATA

- Character generator decoding (Table 8)

As the following table shows, the characters are decoded using combinations of the data in D0 to D3 and D5 to D4.

In decoding, D6 is used exclusively for setting decimal points.

Spaces where (D0, D1, D2, D3) = (0000) and (D5, D4) = (01) are regarded as blank.

**Table 8 List of character generator decoding data**

|    |    |     |    |   |   |   |   |   |   |   |   |   |   |   |   |   |   |   |   |
|----|----|-----|----|---|---|---|---|---|---|---|---|---|---|---|---|---|---|---|---|
|    |    |     | D0 | 0 | 1 | 0 | 1 | 0 | 1 | 0 | 1 | 0 | 1 | 0 | 1 | 0 | 1 |   |   |
|    |    |     | D1 | 0 | 0 | 1 | 1 | 0 | 0 | 1 | 1 | 0 | 0 | 1 | 1 | 0 | 0 | 1 | 1 |
|    |    |     | D2 | 0 | 0 | 0 | 0 | 1 | 1 | 1 | 1 | 0 | 0 | 0 | 0 | 1 | 1 | 1 | 1 |
|    |    |     | D3 | 0 | 0 | 0 | 0 | 0 | 0 | 0 | 0 | 1 | 1 | 1 | 1 | 1 | 1 | 1 | 1 |
| D5 | D4 | HEX | 0  | 1 | 2 | 3 | 4 | 5 | 6 | 7 | 8 | 9 | A | B | C | D | E | F |   |
| 0  | 0  | 0   | 0  | 1 | 2 | 3 | 4 | 5 | 6 | 7 | 8 | 9 | A | B | C | D | E | F |   |
| 0  | 1  | 1   |    | 0 | 1 | 2 | 3 | 4 | 5 | 6 | 7 | 8 | 9 | - | . | , | + | 3 |   |

|    |    |        |
|----|----|--------|
| D7 | D6 |        |
| X  | 0  | Dp OFF |
| X  | 1  | Dp ON  |

### DATA INPUT

(Example 1: Displays and blinks characters a, b, c and d in digits 0, 1, 2 and 3 respectively.)

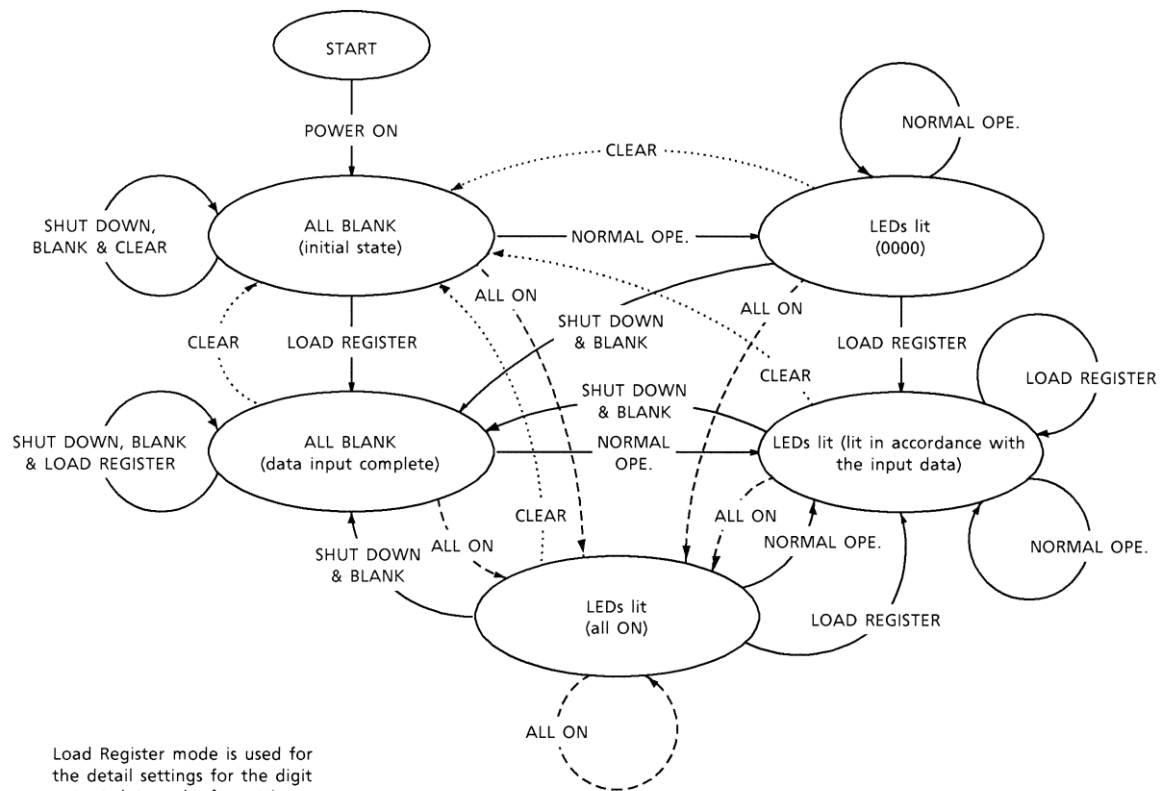
| STEP | D15 to D12 | D11 to D8 | D7 to D4 | D3 to D0 | DIG-0 to 3 | SEG<br>-a, b, c, d, e, f, g | SEG<br>-Dp | MODE                          | DISPLAY<br>INDICATE |
|------|------------|-----------|----------|----------|------------|-----------------------------|------------|-------------------------------|---------------------|
| 0    | -          | -         | -        | -        | OFF        | OFF                         | OFF        | At power-on<br>(= CLEAR MODE) | ALL BLANK           |
| 1    | 0010       | 0000      | XXXX     | 1111     | OFF        | OFF                         | OFF        | DUTY = 15 / 16                | ALL BLANK           |
| 2    | 0010       | 0001      | 0001     | 0011     | OFF        | OFF                         | OFF        | DECODE, 4DIG                  | ALL BLANK           |
| 3    | 0010       | 0010      | X000     | 1010     | OFF        | OFF                         | OFF        | DIG-0 = a                     | ALL BLANK           |
| 4    | 0010       | 0011      | X000     | 1011     | OFF        | OFF                         | OFF        | DIG-1 = b                     | ALL BLANK           |
| 5    | 0010       | 0100      | X000     | 1100     | OFF        | OFF                         | OFF        | DIG-2 = c                     | ALL BLANK           |
| 6    | 0010       | 0101      | X000     | 1101     | OFF        | OFF                         | OFF        | DIG-3 = d                     | ALL BLANK           |
| 7    | 0001       | XXXX      | XXXX     | XXXX     | ON         | ON                          | OFF        | NORMAL                        | a-b-c-d             |
| 8    | 0010       | 0000      | XXXX     | 1000     | ON         | ON                          | OFF        | DUTY = 8 / 16                 | a-b-c-d             |
| 9    | 0000       | XXXX      | XXXX     | XXXX     | OFF        | OFF                         | OFF        | BLANK                         | ALL BLANK           |
| 10   | 0001       | XXXX      | XXXX     | XXXX     | ON         | ON                          | OFF        | NORMAL                        | a-b-c-d             |
| 11   | 0000       | XXXX      | XXXX     | XXXX     | OFF        | OFF                         | OFF        | BLANK                         | ALL BLANK           |
| 12   | 0001       | XXXX      | XXXX     | XXXX     | ON         | ON                          | OFF        | NORMAL                        | a-b-c-d             |
| 13   | 0000       | XXXX      | XXXX     | XXXX     | OFF        | OFF                         | OFF        | BLANK                         | ALL BLANK           |
| 14   | 0001       | XXXX      | XXXX     | XXXX     | ON         | ON                          | OFF        | NORMAL                        | a-b-c-d             |
| 15   | 0100       | XXXX      | XXXX     | 0000     | OFF        | OFF                         | OFF        | STAND-BY<br>(SHUT DOWN)       | ALL BLANK           |

### DATA INPUT

(Example 2: Scroll-lights digits 0, 1, 2, 3 = a., b., c., d. (with decimal points))

| STEP | D15 to D12 | D11 to D8 | D7 to D4 | D3 to D0 | DIG<br>-0 to 3 | SEG<br>-a, b, c, d, e, f, g | SEG<br>-Dp | MODE                          | DISPLAY<br>INDICATE |
|------|------------|-----------|----------|----------|----------------|-----------------------------|------------|-------------------------------|---------------------|
| 0    | -          | -         | -        | -        | OFF            | OFF                         | OFF        | At power-on<br>(= CLEAR MODE) | ALL BLANK           |
| 1    | 0010       | 0000      | XXXX     | 1111     | OFF            | OFF                         | OFF        | DUTY = 15 / 16                | ALL BLANK           |
| 2    | 0010       | 0001      | 0001     | 0011     | OFF            | OFF                         | OFF        | DECODE, 4DIG                  | ALL BLANK           |
| 3    | 0010       | 0010      | X100     | 1010     | OFF            | OFF                         | OFF        | DIG-0 = a.                    | ALL BLANK           |
| 4    | 0010       | 0011      | X001     | 0000     | OFF            | OFF                         | OFF        | DIG-1 = blank                 | ALL BLANK           |
| 5    | 0010       | 0100      | X001     | 0000     | OFF            | OFF                         | OFF        | DIG-2 = blank                 | ALL BLANK           |
| 6    | 0010       | 0101      | X001     | 0000     | OFF            | OFF                         | OFF        | DIG-3 = blank                 | ALL BLANK           |
| 7    | 0001       | XXXX      | XXXX     | XXXX     | ON             | ON                          | ON         | NORMAL                        | a.--                |
| 8    | 0010       | 0010      | X001     | 0000     | OFF            | ON                          | OFF        | DIG-0 = blank                 | ALL BLANK           |
| 9    | 0010       | 0011      | X100     | 1011     | ON             | ON                          | ON         | DIG-1 = b.                    | -b.--               |
| 10   | 0010       | 0011      | X001     | 0000     | OFF            | ON                          | OFF        | DIG-1 = blank                 | ALL BLANK           |
| 11   | 0010       | 0100      | X100     | 1100     | ON             | ON                          | ON         | DIG-2 = c.                    | --c.-               |
| 12   | 0010       | 0100      | X001     | 0000     | OFF            | ON                          | OFF        | DIG-2 = blank                 | ALL BLANK           |
| 13   | 0010       | 0101      | X100     | 1101     | ON             | ON                          | ON         | DIG-3 = d.                    | ---d.               |
| 14   | 0100       | XXXX      | XXXX     | 0000     | OFF            | OFF                         | OFF        | STAND-BY<br>(SHUT DOWN)       | ALL BLANK           |

## STATE TRANSITION DIAGRAM



Load Register mode is used for the detail settings for the digit output duty cycle, for setting Decode/No Decode, for inputting display data, and for setting the number of digits to use.

### ABSOLUTE MAXIMUM RATINGS (Ta = 25°C)

| CHARACTERISTIC                    | SYMBOL                            | RATING                                 | UNIT |
|-----------------------------------|-----------------------------------|--|------|
| Supply Voltage for Logic Circuits | V <sub>DD</sub>                   | 6.0                                    | V    |
| Supply Voltage                    | V <sub>CC</sub>                   | 17                                     | V    |
| DIG-0 to DIG-3 Output Current     | I <sub>DIG</sub>                  | -400                                   | mA   |
| OUT-a to Dp Output Current        | I <sub>OUT</sub>                  | 50                                     | mA   |
| Output Current for Logic Block    | I <sub>OH</sub> / I <sub>OL</sub> | ±5                                     | mA   |
| Input Voltage                     | V <sub>IN</sub>                   | -0.3 to V <sub>DD</sub> + 0.3 (Note 1) | V    |
| Operating Frequency               | f <sub>CK</sub>                   | 15.0 (Operation with 1IC)              | MHz  |
| Total Supply Current              | I <sub>VDD</sub>                  | 400                                    | mA   |
| Power Dissipation                 | P <sub>D</sub>                    | SDIP24: 1.78                           | W    |
|                                   |                                   | VQFN24: 2.4                            |      |
| Operating Temperature             | T <sub>opr</sub>                  | -40 to 85                              | °C   |
| Storage Temperature               | T <sub>stg</sub>                  | -55 to 150                             | °C   |

Note 1: However, do not exceed 6.0 V

### ELECTRICAL CHARACTERISTICS

(Unless otherwise stated, V<sub>DD</sub> = 5.0 V, V<sub>CC</sub> = 5.0 V, R<sub>EXT</sub> = 760 Ω, Ta = 25°C)

| CHARACTERISTIC                                  | SYMBOL             | TEST CIRCUIT | TEST CONDITION   | MIN | TYP. | MAX | UNIT |
|---|--------------------|--------------|--|-----|------|-----|------|
| Operating Power Supply Current for Output Block | I <sub>CC1</sub>   | 1            | SET NORMAL OPE. MODE, R <sub>EXT</sub> = 760 Ω @OUT-a to Dp ALL ON, Ta = 25°C                        | -   | 300  | -   | mA   |
|   | I <sub>CC2</sub>   | 1            | SET NORMAL OPE. MODE, R <sub>EXT</sub> = 760 Ω @OUT-a to Dp ALL ON V <sub>CC</sub> = 12 V, Ta = 25°C | -   | 320  | -   |      |
| DIG-0 to DIG-3 Scan Frequency                   | f <sub>OSC</sub>   | 2            | NORMAL OPE. MODE, V <sub>DD</sub> = 4.5 to 5.5 V   | 240 | 480  | 960 | Hz   |
| OUT-a to Dp Output Sink Current                 | I <sub>SEG</sub>   | 3            | NORMAL OPE. MODE, V <sub>CE</sub> = 0.7 V, R <sub>EXT</sub> = 760 Ω                                  | 29  | 34   | 40  | mA   |
| DIG-0 to 3 Output Leakage Current               | I <sub>leak1</sub> | 4            | ALL OFF MODE, V <sub>CC</sub> = 17 V   | -   | -    | -1  | μA   |
| OUT-a to Dp Output Leakage Current              | I <sub>leak2</sub> | 4            | ALL OFF MODE, V <sub>CC</sub> = 17 V   | -   | -    | 1   | μA   |
| DIG-0 to 3 Output Voltage                       | V <sub>OUT</sub>   | 5            | NORMAL OPE. MODE, I <sub>DIG</sub> = -320 mA   | 3.0 | -    | -   | V    |



### Logic block

| CHARACTERISTIC                                    | SYMBOL           | TEST CIR-<br>CUIT | TEST CONDITION  | MIN | TYP.            | MAX  | UNIT |
|---|------------------|-------------------|---|-----|-----------------|------|------|
| Static Power Supply Current for Logic Circuits    | I <sub>DD1</sub> | 6                 | STANDBY MODE, Ta = 25°C   | -   | -               | 200  | μA   |
|   | I <sub>DD2</sub> | 6                 | BLANK MODE, Ta = 25°C   | -   | -               | 12.5 | mA   |
| Operating Power Supply Current for Logic Circuits | I <sub>DD3</sub> | 6                 | NORMAL OPE. MODE,<br>f <sub>CLK</sub> = 10MHz,<br>DATA-IN: OUT-a to Dp = ON,<br>Ta = 25°C | -   | -               | 20.5 | mA   |
| High Input Current for Logic Circuits             | I <sub>IH</sub>  | -                 | DATA-IN, LOAD & CLOCK:<br>V <sub>IN</sub> = 5 V   | -   | -               | 1    | μA   |
| Low Input Current for Logic Circuits              | I <sub>IL</sub>  | -                 | DATA-IN, LOAD & CLOCK:<br>V <sub>IN</sub> = 0 V   | -   | -               | -1   | μA   |
| High Output Voltage for Logic Circuits            | V <sub>OH1</sub> | 6                 | DATA-OUT, I <sub>OH</sub> = -1.0 mA   | 4.6 | -               | -    | V    |
|   | V <sub>OH2</sub> | 6                 | DATA-OUT, I <sub>OH</sub> = -1.0 μA   | -   | V <sub>DD</sub> | -    |      |
| Low Output Voltage for Logic Circuits             | V <sub>OL1</sub> | 6                 | DATA-OUT, I <sub>OL</sub> = 1.0 mA  | -   | -               | 0.4  | V    |
|   | V <sub>OL2</sub> | 6                 | DATA-OUT, I <sub>OL</sub> = 1.0 μA  | -   | 0.1             | -    |      |
| Clock Frequency                                   | f <sub>CLK</sub> | 6                 | CASCADE CONNECTED,<br>Ta = -40 to 85°C  | -   | -               | 10   | MHz  |

### SWITCHING CHARACTERISTICS

(Unless otherwise stated, VDD = 5.0 V, VCC = 5.0 V, Ta = 25°C)

| CHARACTERISTIC   | SYMBOL   | TEST CIR-<br>CUIT | TEST CONDITION        | MIN | TYP. | MAX  | UNIT |
|--|----------|-------------------|-----------------------|-----|------|------|------|
| Data Hold Time (D-IN-CLOCK)                                  | tDHO     | -                 | -                     | -   | 10   | -    | ns   |
| Data Setup Time (D-IN-CLOCK)                                 | tDST     | -                 | -                     | -   | 20   | -    | ns   |
| Serial Output Delay Time<br>(CLOCK-D-OUT)                    | tPHL-SO  | -                 | CL = 10 pF            | -   | 25   | -    | ns   |
|  | tPLH-SO  |                   | CL = 10 pF            | -   | 25   | -    |      |
| High Clock Pulse Width                                       | tCKH     | -                 | -                     | -   | 30   | -    | ns   |
| Low Clock Pulse Width  | tCKL     | -                 | -                     | -   | 30   | -    | ns   |
| Load Pulse Width   | twLD     | -                 | -                     | -   | 100  | -    | ns   |
| Load Clock Time<br>(CLOCK-LOAD)                              | tCKLD    | -                 | -                     | -   | 50   | -    | ns   |
| Clock Load Time<br>(LOAD-CLOCK)                              | tLDCK    | -                 | -                     | -   | 50   | -    | ns   |
| OUT-a to Dp Output Delay Time<br>(LOAD(Internal EN)-OUTn)    | tPHL-SEG | -                 | CL = 10 pF, Test mode | -   | -    | 5.0  | μs   |
|  | tPLH-SEG |                   | CL = 10 pF, Test mode | -   | -    | 5.0  |      |
| OUT-a to Dp Output Rise Time<br>(OUTn)                       | tr SEG   | -                 | CL = 10 pF            | 0.2 | 1.0  | -    | μs   |
| OUT-a to Dp Output Fall Time<br>(OUTn)                       | tf SEG   | -                 | CL = 10 pF            | 0.2 | 1.0  | -    | μs   |
| DIG-0 to DIG-3 Output Delay<br>Time (LOAD(Internal EN)-DIGn) | tPHL-DIG | -                 | CL = 10 pF, Test mode | -   | -    | 10.0 | μs   |
|  | tPLH-DIG |                   | CL = 10 pF, Test mode | -   | -    | 10.0 |      |
| DIG-0 to DIG-3 Output Rise<br>Time (DIGn)                    | tr DIG   | -                 | CL = 10 pF            | 5   | 20   | -    | ns   |
| DIG-0 to DIG-3 Output Fall Time<br>(DIGn)                    | tf DIG   | -                 | CL = 10 pF            | 50  | 150  | -    | ns   |

### RECOMMENDED OPERATING CONDITIONS

(Unless otherwise stated,  $V_{DD} = 5.0\text{ V}$ ,  $V_{CC} = 5.0\text{ V}$ ,  $T_a = -40\text{ to }85^\circ\text{C}$ )

#### Output

| CHARACTERISTIC                       | SYMBOL    | TEST CIR-<br>CUIT | TEST CONDITION           | MIN | TYP. | MAX  | UNIT |
|--------------------------------------|-----------|-------------------|--------------------------|-----|------|------|------|
| Supply Voltage for Output Block      | $V_{CC}$  | -                 | -                        | 4.0 | -    | 6.0  | V    |
| DIG-0 to DIG-3 Output Source Current | $I_{DIG}$ | -                 | $V_{OUT} = 3.0\text{ V}$ | -   | -    | -320 | mA   |
| OUT-a to OUT-Dp Output Sink Current  | $I_{SEG}$ | -                 | $V_{CE} = 0.7\text{ V}$  | -   | -    | 40   | mA   |

#### Logic block

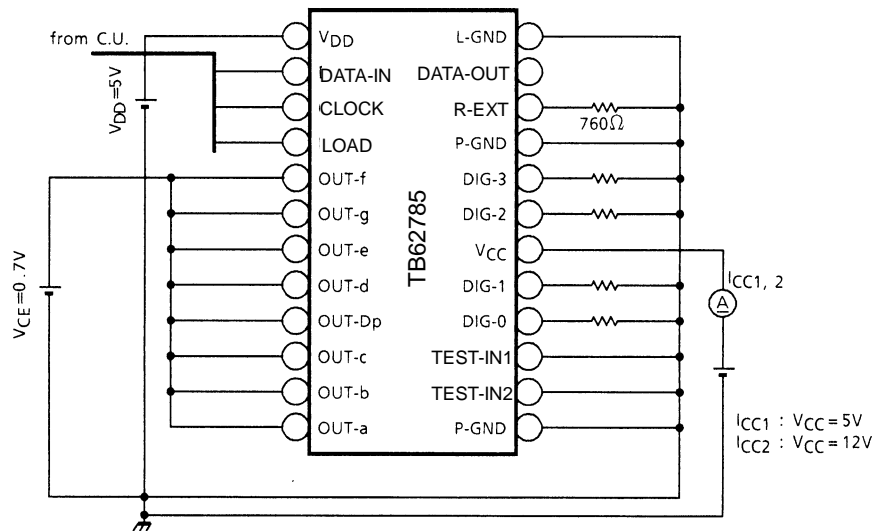
| CHARACTERISTIC                        | SYMBOL   | TEST CIR-<br>CUIT | TEST CONDITION                                  | MIN             | TYP. | MAX             | UNIT          |
|---------------------------------------|----------|-------------------|---|-----------------|------|-----------------|---------------|
| Supply Voltage for Logic Block        | $V_{DD}$ | -                 | -   | 4.5             | -    | 5.5             | V             |
| High Input Current for Logic Circuits | $I_{IH}$ | -                 | DATA-IN, LOAD & CLOCK,<br>$V_{IN} = V_{DD}$     | -               | -    | 1               | $\mu\text{A}$ |
| Low Input Current for Logic Circuits  | $I_{IL}$ | -                 | DATA-IN, LOAD & CLOCK,<br>$V_{IN} = 0\text{ V}$ | -               | -    | -1              | $\mu\text{A}$ |
| High Input Voltage for Logic Circuits | $V_{IH}$ | -                 | -   | 0.7<br>$V_{DD}$ | -    | -               | V             |
| Low Input Voltage for Logic Circuits  | $V_{IL}$ | -                 | -   | -               | -    | 0.3<br>$V_{DD}$ | V             |

### SWITCHING CONDITIONS

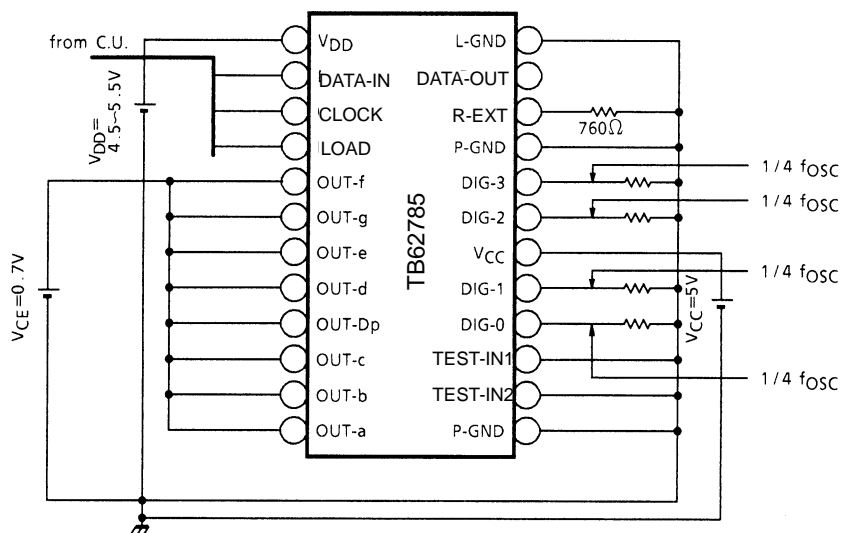
| CHARACTERISTIC                         | SYMBOL      | TEST CIR-<br>CUIT | TEST CONDITION       | MIN | TYP. | MAX | UNIT |
|--|-------------|-------------------|----------------------|-----|------|-----|------|
| Data Hold Time (D-IN-CLOCK)            | $t_{DHO}$   | -                 | -                    | 30  | -    | -   | ns   |
| Data Setup Time (D-IN-CLOCK)           | $t_{DST}$   | -                 | -                    | 50  | -    | -   | ns   |
| Serial Output Delay Time (CLOCK-D-OUT) | $t_{PDSO}$  | -                 | $C_L = 10\text{ pF}$ | 50  | -    | -   | ns   |
| High Clock Pulse Width                 | $t_{CKH}$   | -                 | -                    | 30  | -    | -   | ns   |
| Low Clock Pulse Width                  | $t_{CKL}$   | -                 | -                    | 30  | -    | -   | ns   |
| Load Pulse Width                       | $t_{wLD}$   | -                 | -                    | 150 | -    | -   | ns   |
| Load Clock Time (CLOCK-LOAD)           | $t_{CLKLD}$ | -                 | -                    | 100 | -    | -   | ns   |
| Clock Load Time (LOAD-CLOCK)           | $t_{LDCLK}$ | -                 | -                    | 100 | -    | -   | ns   |

### TEST CIRCUITS

#### (1) I<sub>CC1</sub>, I<sub>CC2</sub>

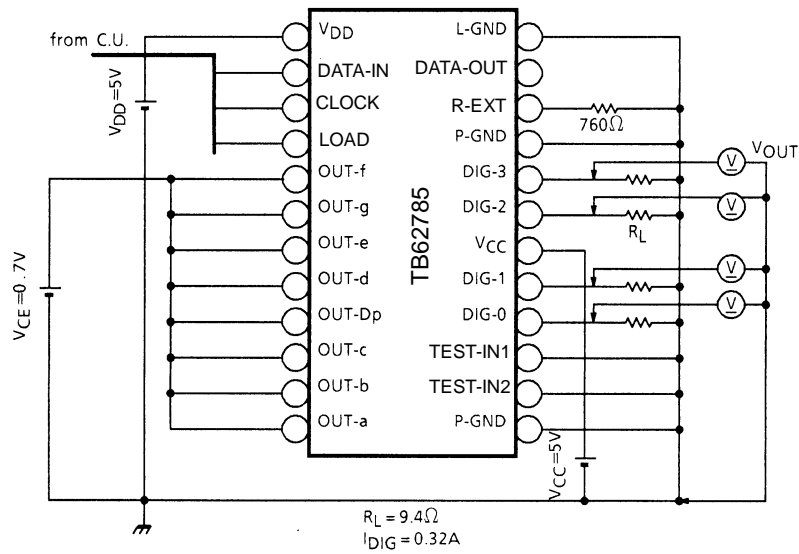


#### (2) f<sub>osc</sub>

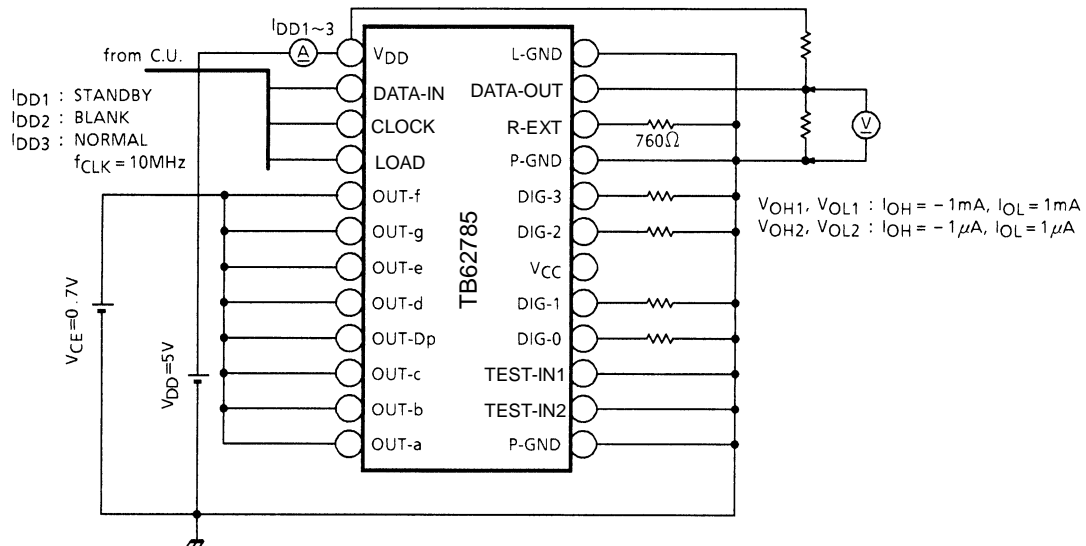


The diagram shows the TB62785 driver chip with its pinout and connections. The chip is powered by a 5V VDD supply and a 17V VCC supply. The R-EXT pin is connected to a 760Ω resistor. The chip is labeled 'TB62785'.

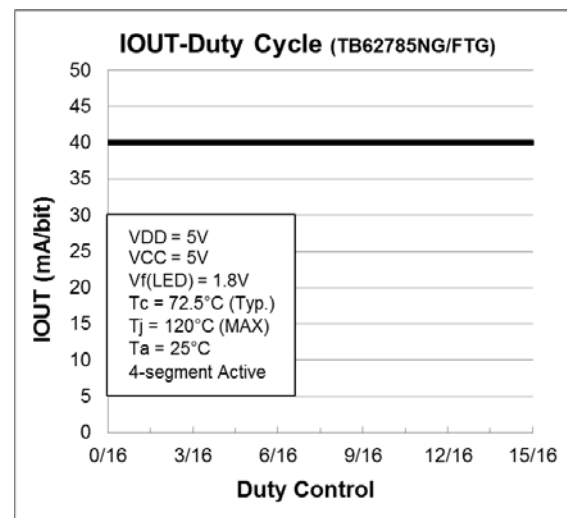
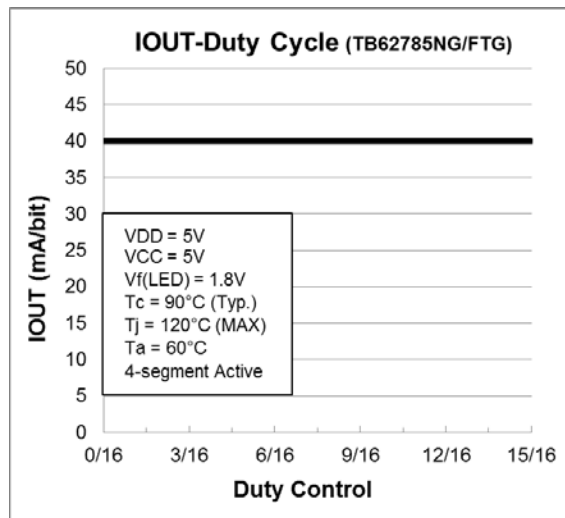
### (5) V<sub>OUT</sub>



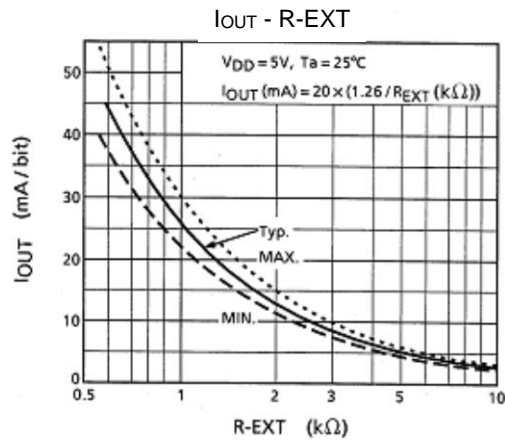
### (6) I<sub>DD1</sub>, I<sub>DD2</sub>, I<sub>DD3</sub>, V<sub>OH1</sub>, V<sub>OH2</sub>, V<sub>OL1</sub>, V<sub>OL2</sub>, f<sub>CLK</sub>



## DUTY CYCLE SETTINGS AND OUTPUT CURRENT VALUES



## EXTERNAL RESISTANCE AND OUTPUT CURRENT VALUES



The following diagram shows application circuits.

Because operation may be unstable due to influences such as the electromagnetic induction of the wiring, the IC should be located as close as possible to the LED.

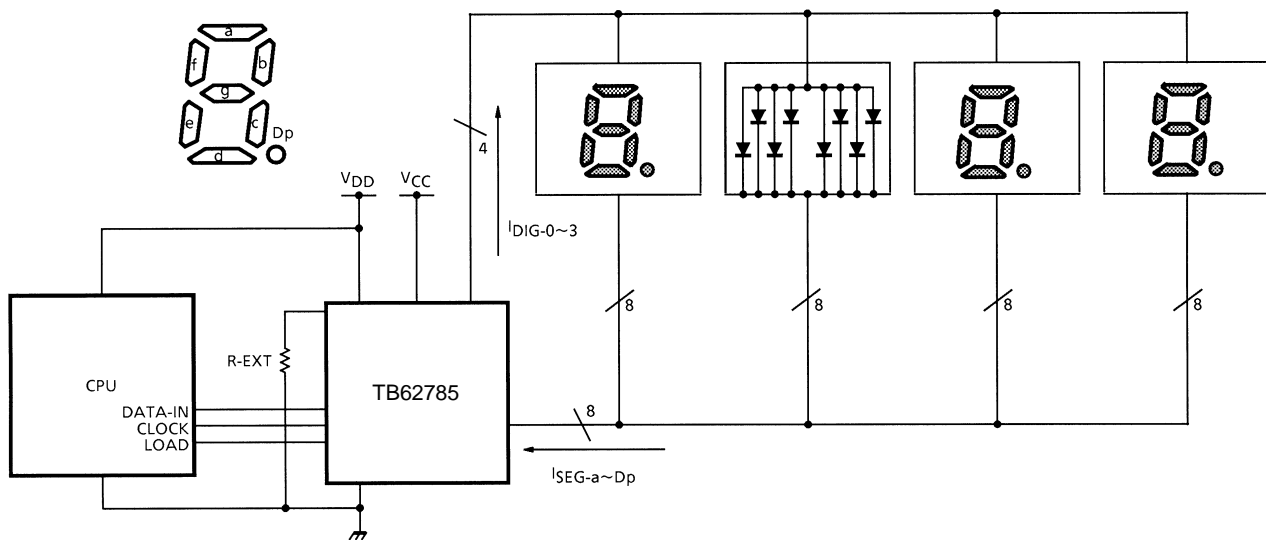
The L-GND and P-GND of the IC are connected to the substrate in the IC.

Take care to avoid a potential difference exceeding 0.4V at two pins.

When executing the pattern layout, Toshiba recommends not including inductance components in the GND or output pin lines, and not inserting capacitance components exceeding 50pF between the R-EXT and GND.



### APPLICATION CIRCUIT EXAMPLE (Connection example)



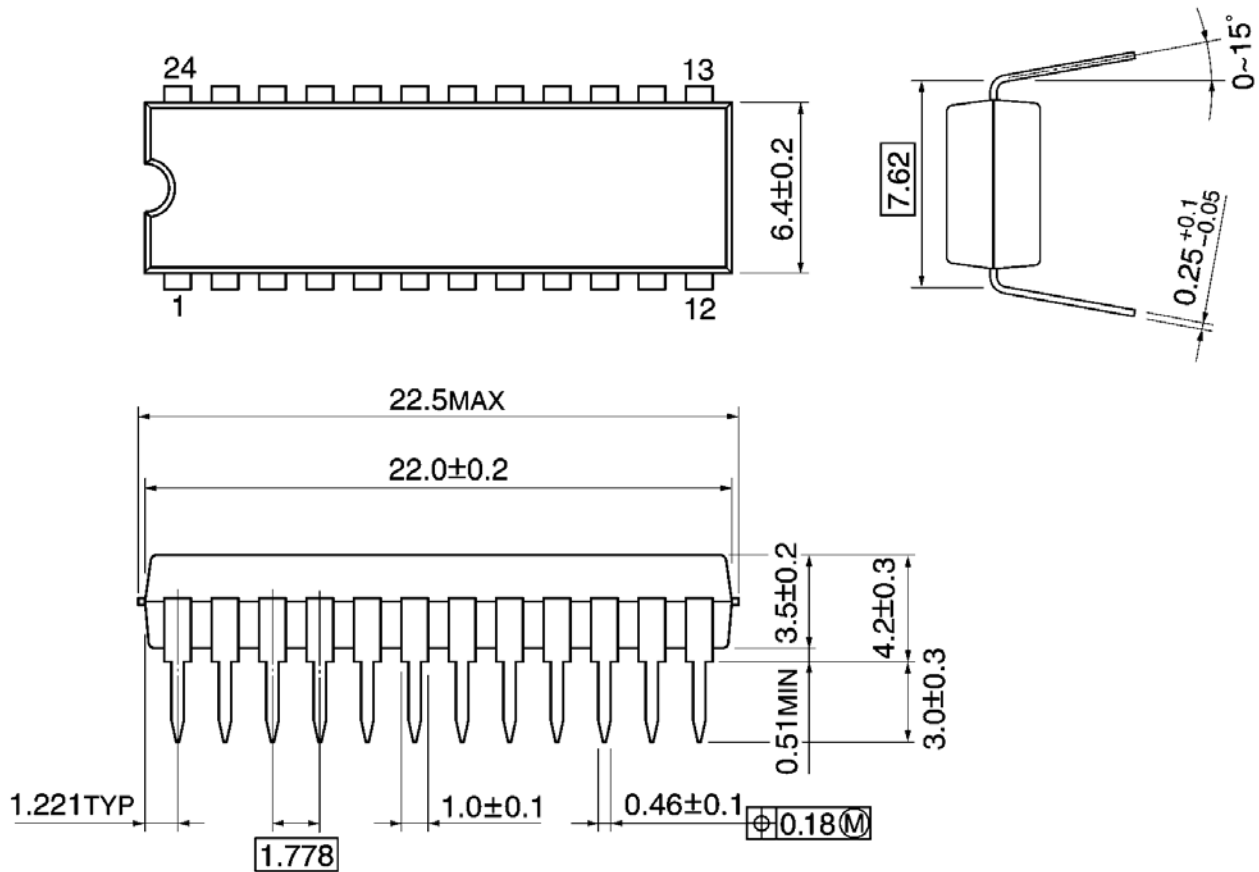
### PRECAUTIONS for USING

Utmost care is necessary in the design of the output line, VCC (VDD) and (L-GND, P-GND) line since IC may be destroyed due to short-circuit between outputs, air contamination fault, or fault by improper grounding.

## Package Dimensions

### SDIP24-P-300-1.78

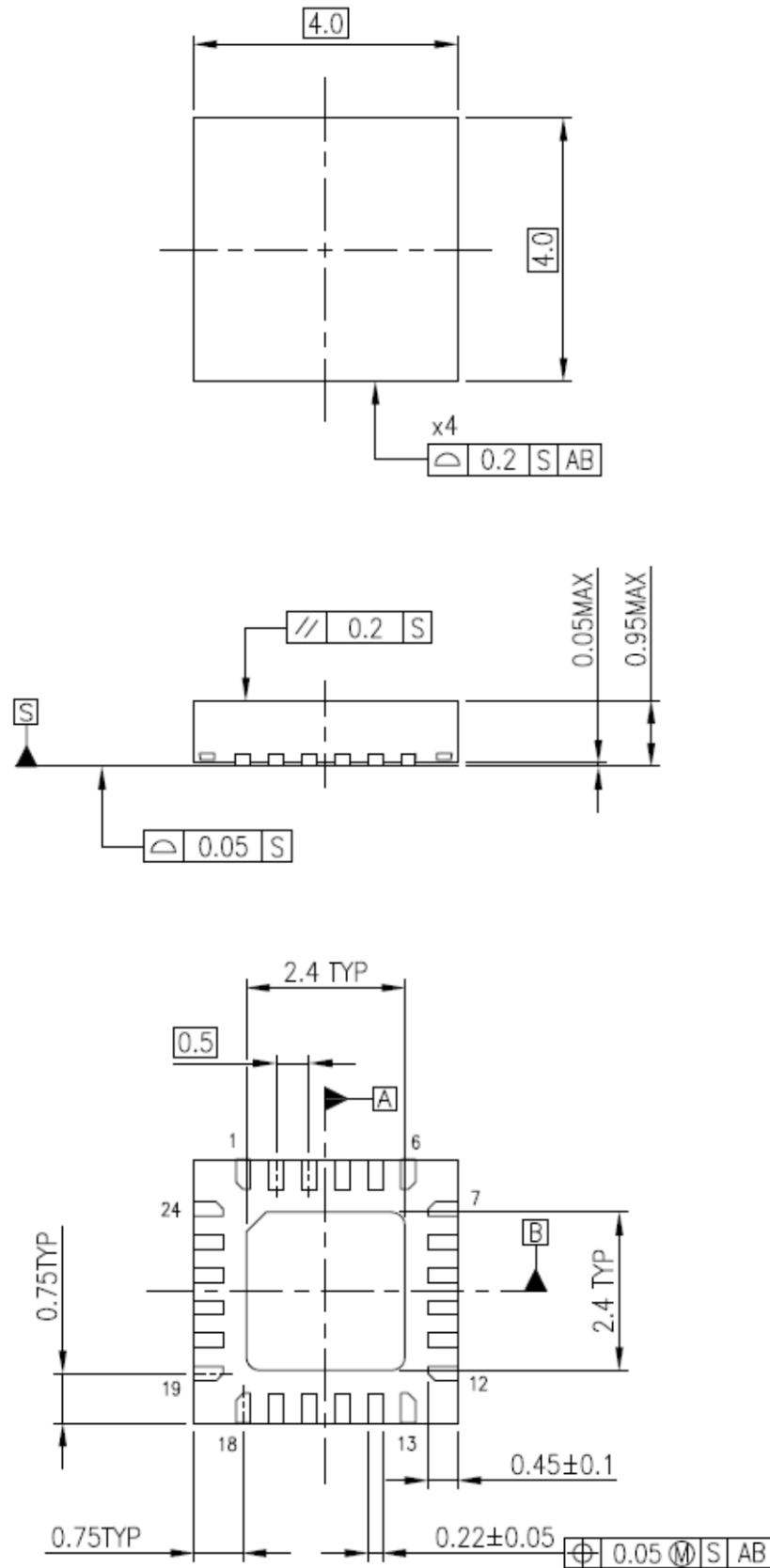
Unit: mm



Weight: 1.22 g (typ.)

P-VQFN24-0404-0.50-001

Unit: mm



Weight: 0.037 g (typ.)

## **Notes on Contents**

### **1. Block Diagrams**

Some of the functional blocks, circuits, or constants in the block diagram may be omitted or simplified for explanatory purposes.

### **2. Equivalent Circuits**

The equivalent circuit diagrams may be simplified or some parts of them may be omitted for explanatory purposes.

### **3. Timing Charts**

Timing charts may be simplified for explanatory purposes.

### **4. Application Circuits**

The application circuits shown in this document are provided for reference purposes only. Thorough evaluation is required, especially at the mass production design stage.

Toshiba does not grant any license to any industrial property rights by providing these examples of application circuits.

### **5. Test Circuits**

Components in the test circuits are used only to obtain and confirm the device characteristics. These components and circuits are not guaranteed to prevent malfunction or failure from occurring in the application equipment.

## **IC Usage Considerations**

### **Notes on handling of ICs**

- [1] The absolute maximum ratings of a semiconductor device are a set of ratings that must not be exceeded, even for a moment. Do not exceed any of these ratings.  
Exceeding the rating(s) may cause the device breakdown, damage or deterioration, and may result injury by explosion or combustion.
- [2] Use an appropriate power supply fuse to ensure that a large current does not continuously flow in case of over current and/or IC failure. The IC will fully break down when used under conditions that exceed its absolute maximum ratings, when the wiring is routed improperly or when an abnormal pulse noise occurs from the wiring or load, causing a large current to continuously flow and the breakdown can lead smoke or ignition. To minimize the effects of the flow of a large current in case of breakdown, appropriate settings, such as fuse capacity, fusing time and insertion circuit location, are required.
- [3] If your design includes an inductive load such as a motor coil, incorporate a protection circuit into the design to prevent device malfunction or breakdown caused by the current resulting from the inrush current at power ON or the negative current resulting from the back electromotive force at power OFF. IC breakdown may cause injury, smoke or ignition.  
Use a stable power supply with ICs with built-in protection functions. If the power supply is unstable, the protection function may not operate, causing IC breakdown. IC breakdown may cause injury, smoke or ignition.
- [4] Do not insert devices in the wrong orientation or incorrectly.  
Make sure that the positive and negative terminals of power supplies are connected properly.  
Otherwise, the current or power consumption may exceed the absolute maximum rating, and exceeding the rating(s) may cause the device breakdown, damage or deterioration, and may result injury by explosion or combustion.  
In addition, do not use any device that is applied the current with inserting in the wrong orientation or incorrectly even just one time.

- [5] Carefully select external components (such as inputs and negative feedback capacitors) and load components (such as speakers), for example, power amp and regulator.

If there is a large amount of leakage current such as input or negative feedback condenser, the IC output DC voltage will increase. If this output voltage is connected to a speaker with low input withstand voltage, overcurrent or IC failure can cause smoke or ignition. (The over current can cause smoke or ignition from the IC itself.) In particular, please pay attention when using a Bridge Tied Load (BTL) connection type IC that inputs output DC voltage to a speaker directly.

### Points to remember on handling of ICs

#### (1) Heat Radiation Design

In using an IC with large current flow such as power amp, regulator or driver, please design the device so that heat is appropriately radiated, not to exceed the specified junction temperature ( $T_j$ ) at any time and condition. These ICs generate heat even during normal use. An inadequate IC heat radiation design can lead to decrease in IC life, deterioration of IC characteristics or IC breakdown. In addition, please design the device taking into consideration the effect of IC heat radiation with peripheral components.

#### (2) Back-EMF

When a motor rotates in the reverse direction, stops or slows down abruptly, a current flows back to the motor's power supply due to the effect of back-EMF. If the current sink capability of the power supply is small, the device's motor power supply and output pins might be exposed to conditions beyond absolute maximum ratings. To avoid this problem, take the effect of back-EMF into consideration in system design.

## RESTRICTIONS ON PRODUCT USE

- Toshiba Corporation, and its subsidiaries and affiliates (collectively "TOSHIBA"), reserve the right to make changes to the information in this document, and related hardware, software and systems (collectively "Product") without notice.
- This document and any information herein may not be reproduced without prior written permission from TOSHIBA. Even with TOSHIBA's written permission, reproduction is permissible only if reproduction is without alteration/omission.
- Though TOSHIBA works continually to improve Product's quality and reliability, Product can malfunction or fail. Customers are responsible for complying with safety standards and for providing adequate designs and safeguards for their hardware, software and systems which minimize risk and avoid situations in which a malfunction or failure of Product could cause loss of human life, bodily injury or damage to property, including data loss or corruption. Before customers use the Product, create designs including the Product, or incorporate the Product into their own applications, customers must also refer to and comply with (a) the latest versions of all relevant TOSHIBA information, including without limitation, this document, the specifications, the data sheets and application notes for Product and the precautions and conditions set forth in the "TOSHIBA Semiconductor Reliability Handbook" and (b) the instructions for the application with which the Product will be used with or for. Customers are solely responsible for all aspects of their own product design or applications, including but not limited to (a) determining the appropriateness of the use of this Product in such design or applications; (b) evaluating and determining the applicability of any information contained in this document, or in charts, diagrams, programs, algorithms, sample application circuits, or any other referenced documents; and (c) validating all operating parameters for such designs and applications. **TOSHIBA ASSUMES NO LIABILITY FOR CUSTOMERS' PRODUCT DESIGN OR APPLICATIONS.**
- **PRODUCT IS NEITHER INTENDED NOR WARRANTED FOR USE IN EQUIPMENTS OR SYSTEMS THAT REQUIRE EXTRAORDINARILY HIGH LEVELS OF QUALITY AND/OR RELIABILITY, AND/OR A MALFUNCTION OR FAILURE OF WHICH MAY CAUSE LOSS OF HUMAN LIFE, BODILY INJURY, SERIOUS PROPERTY DAMAGE AND/OR SERIOUS PUBLIC IMPACT ("UNINTENDED USE").** Except for specific applications as expressly stated in this document, Unintended Use includes, without limitation, equipment used in nuclear facilities, equipment used in the aerospace industry, medical equipment, equipment used for automobiles, trains, ships and other transportation, traffic signaling equipment, equipment used to control combustions or explosions, safety devices, elevators and escalators, devices related to electric power, and equipment used in finance-related fields. **IF YOU USE PRODUCT FOR UNINTENDED USE, TOSHIBA ASSUMES NO LIABILITY FOR PRODUCT.** For details, please contact your TOSHIBA sales representative.
- Do not disassemble, analyze, reverse-engineer, alter, modify, translate or copy Product, whether in whole or in part.
- Product shall not be used for or incorporated into any products or systems whose manufacture, use, or sale is prohibited under any applicable laws or regulations.
- The information contained herein is presented only as guidance for Product use. No responsibility is assumed by TOSHIBA for any infringement of patents or any other intellectual property rights of third parties that may result from the use of Product. No license to any intellectual property right is granted by this document, whether express or implied, by estoppel or otherwise.
- **ABSENT A WRITTEN SIGNED AGREEMENT, EXCEPT AS PROVIDED IN THE RELEVANT TERMS AND CONDITIONS OF SALE FOR PRODUCT, AND TO THE MAXIMUM EXTENT ALLOWABLE BY LAW, TOSHIBA (1) ASSUMES NO LIABILITY WHATSOEVER, INCLUDING WITHOUT LIMITATION, INDIRECT, CONSEQUENTIAL, SPECIAL, OR INCIDENTAL DAMAGES OR LOSS, INCLUDING WITHOUT LIMITATION, LOSS OF PROFITS, LOSS OF OPPORTUNITIES, BUSINESS INTERRUPTION AND LOSS OF DATA, AND (2) DISCLAIMS ANY AND ALL EXPRESS OR IMPLIED WARRANTIES AND CONDITIONS RELATED TO SALE, USE OF PRODUCT, OR INFORMATION, INCLUDING WARRANTIES OR CONDITIONS OF MERCHANTABILITY, FITNESS FOR A PARTICULAR PURPOSE, ACCURACY OF INFORMATION, OR NONINFRINGEMENT.**
- Do not use or otherwise make available Product or related software or technology for any military purposes, including without limitation, for the design, development, use, stockpiling or manufacturing of nuclear, chemical, or biological weapons or missile technology products (mass destruction weapons). Product and related software and technology may be controlled under the applicable export laws and regulations including, without limitation, the Japanese Foreign Exchange and Foreign Trade Law and the U.S. Export Administration Regulations. Export and re-export of Product or related software or technology are strictly prohibited except in compliance with all applicable export laws and regulations.
- Please contact your TOSHIBA sales representative for details as to environmental matters such as the RoHS compatibility of Product. Please use Product in compliance with all applicable laws and regulations that regulate the inclusion or use of controlled substances, including without limitation, the EU RoHS Directive. **TOSHIBA ASSUMES NO LIABILITY FOR DAMAGES OR LOSSES OCCURRING AS A RESULT OF NONCOMPLIANCE WITH APPLICABLE LAWS AND REGULATIONS.**

# Mouser Electronics

Authorized Distributor

Click to View Pricing, Inventory, Delivery & Lifecycle Information:

Toshiba:

TB62785FTG,EL



**Стандарт  
Электрон  
Связь**

Мы молодая и активно развивающаяся компания в области поставок электронных компонентов. Мы поставляем электронные компоненты отечественного и импортного производства напрямую от производителей и с крупнейших складов мира.

Благодаря сотрудничеству с мировыми поставщиками мы осуществляем комплексные и плановые поставки широчайшего спектра электронных компонентов.

Собственная эффективная логистика и склад в обеспечивает надежную поставку продукции в точно указанные сроки по всей России.

Мы осуществляем техническую поддержку нашим клиентам и предпродажную проверку качества продукции. На все поставляемые продукты мы предоставляем гарантию .

Осуществляем поставки продукции под контролем ВП МО РФ на предприятия военно-промышленного комплекса России , а также работаем в рамках 275 ФЗ с открытием отдельных счетов в уполномоченном банке. Система менеджмента качества компании соответствует требованиям ГОСТ ISO 9001.

Минимальные сроки поставки, гибкие цены, неограниченный ассортимент и индивидуальный подход к клиентам являются основой для выстраивания долгосрочного и эффективного сотрудничества с предприятиями радиоэлектронной промышленности, предприятиями ВПК и научно-исследовательскими институтами России.

С нами вы становитесь еще успешнее!

**Наши контакты:**

**Телефон:** +7 812 627 14 35

**Электронная почта:** [sales@st-electron.ru](mailto:sales@st-electron.ru)

**Адрес:** 198099, Санкт-Петербург,  
Промышленная ул, дом № 19, литера Н,  
помещение 100-Н Офис 331