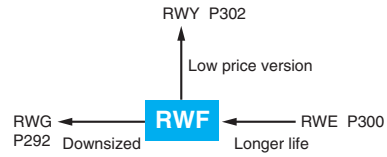


# RWF Series

- High ripple capability
- Endurance with ripple current : 5,000 hours at 85°C
- Wide range of case sizes from  $\phi 50$  to  $\phi 100$
- RoHS Compliant



## SPECIFICATIONS

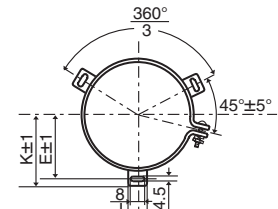
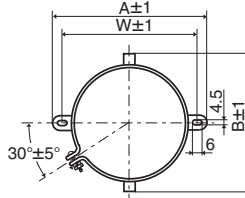
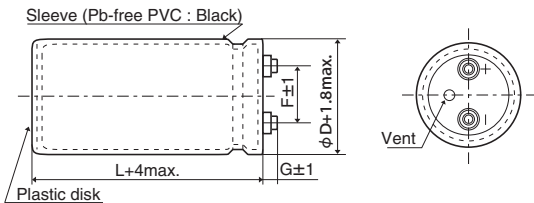
| Items                           | Characteristics  |
|---------------------------------|--|
| Category                        |  |
| Temperature Range               | -25 to +85°C   |
| Rated Voltage Range             | 350 to 450V <sub>dc</sub>  |
| Capacitance Tolerance           | ±20% (M) (at 20°C, 120Hz)  |
| Leakage Current                 | I=0.02CV or 5mA, whichever is smaller.<br>Where, I : Max. leakage current (μA), C : Nominal capacitance (μF), V : Rated voltage (V) (at 20°C after 5 minutes)  |
| Dissipation Factor (tan δ)      | 0.25 max. (at 20°C, 120Hz)   |
| Low Temperature Characteristics | Capacitance change $C(-25^{\circ}\text{C})/C(+20^{\circ}\text{C}) \geq 0.7$ (at 120Hz)   |
| Insulation Resistance           | When measured between the terminals that are connected to each other and to the mounting clamp on the insulating sleeve covering the case by using an insulation resistance meter of 500V <sub>dc</sub> , the insulation resistance shall not be less than 100MΩ.                    |
| Insulation Withstanding Voltage | When a voltage of 2,000V <sub>ac</sub> is applied for 1 minute between the terminals that are connected to each other and to the mounting clamp on the insulating sleeve covering the case, there shall not be electrical damage.  |
| Endurance                       | The following specifications shall be satisfied when the capacitors are restored to 20°C after subjected to DC voltage with the rated ripple current is applied (the peak voltage shall not exceed the rated voltage) for 5,000 hours at 85°C.                                       |
|                                 | Capacitance change $\leq \pm 20\%$ of the initial value  |
|                                 | D.F. (tan δ) $\leq 200\%$ of the initial specified value   |
|                                 | Leakage current $\leq$ The initial specified value   |
| Shelf Life                      | The following specifications shall be satisfied when the capacitors are restored to 20°C after exposing them for 500 hours at 85°C without voltage applied. Before the measurement, the capacitor shall be preconditioned by applying voltage according to Item 4.1 of JIS C 5101-4. |
|                                 | Capacitance change $\leq \pm 20\%$ of the initial value  |
|                                 | D.F. (tan δ) $\leq 200\%$ of the initial specified value   |
|                                 | Leakage current $\leq$ The initial specified value   |

## DIMENSIONS (Screw-Mount) [mm]

● Terminal Code : LG

● Mounting Clamp Code : B

● Mounting Clamp Code : C



| φD   | A     | B    | W    | F    |
|------|-------|------|------|------|
| 50   | 78.0  | 64.0 | 68.0 | 22.4 |
| 63.5 | 90.0  | 76.0 | 80.0 | 28.0 |
| 76.2 | 104.5 | 90.0 | 93.5 | 31.5 |

| φD   | E    | K    | F    | J    |
|------|------|------|------|------|
| 50   | 32.5 | 37.0 | 22.4 | 14.0 |
| 63.5 | 38.1 | 43.5 | 28.0 | 14.0 |
| 76.2 | 44.5 | 50.0 | 31.5 | 14.0 |
| 89   | 50.8 | 56.5 | 31.5 | 16.0 |
| 100  | 56.5 | 63.4 | 41.5 | 18.0 |

- φ50 & φ63.5 : G=6
- φ76.2 & φ89 : G=5
- φ100 : G=10

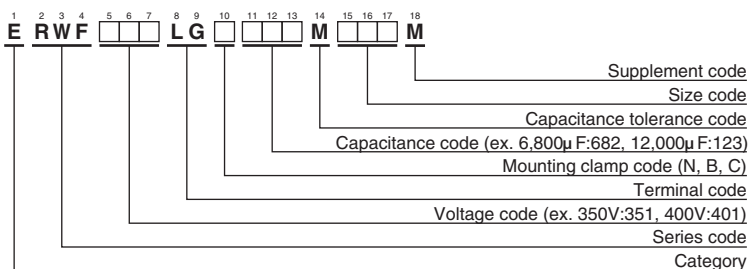
<Screw specifications>

to φ89 Plus hexagon-headed screw : M5×0.8×10  
Maximum screw tightening torque : 3.23Nm

φ100 Cross-recessed head (phillips) screw : M8×1.25×16  
Spring washer, Washer  
Maximum screw tightening torque : 6.31Nm

\* The screw and the mounting clamp are separately supplied and not attached to the product.

## PART NUMBERING SYSTEM



Please refer to "Product code guide (screw-mount terminal type)"

RWF Series

◆STANDARD RATINGS

| WV (V <sub>dc</sub> ) | Cap (μF)  | Case size φD×L(mm) | tan δ | Rated ripple current (Arms/85°C, 120Hz) | Part No.           | WV (V <sub>dc</sub> ) | Cap (μF)  | Case size φD×L(mm) | tan δ      | Rated ripple current (Arms/85°C, 120Hz) | Part No.           |                    |
|-----------------------|-----------|--------------------|-------|---|--------------------|-----------------------|-----------|--------------------|------------|---|--------------------|--------------------|
| 350                   | 1,200     | 50 × 60            | 0.25  | 4.90                                    | ERWF351LGC122MC60M | 400                   | 5,600     | 63.5 × 190         | 0.25       | 18.2                                    | ERWF401LGC562MDK0M |                    |
|                       | 1,800     | 50 × 75            | 0.25  | 6.50                                    | ERWF351LGC182MC75M |                       | 5,600     | 76.2 × 130         | 0.25       | 16.9                                    | ERWF401LGC562MED0M |                    |
|                       | 2,200     | 50 × 85            | 0.25  | 7.50                                    | ERWF351LGC222MC85M |                       | 6,800     | 76.2 × 155         | 0.25       | 20.2                                    | ERWF401LGC682MEF5M |                    |
|                       | 2,200     | 50 × 96            | 0.25  | 7.70                                    | ERWF351LGC222MC96M |                       | 8,200     | 76.2 × 170         | 0.25       | 22.8                                    | ERWF401LGC822MEH0M |                    |
|                       | 2,700     | 50 × 115           | 0.25  | 9.30                                    | ERWF351LGC272MCB5M |                       | 10,000    | 89 × 155           | 0.25       | 26.6                                    | ERWF401LGC103MFF5M |                    |
|                       | 3,300     | 50 × 130           | 0.25  | 10.8                                    | ERWF351LGC332MCD0M |                       | 12,000    | 89 × 170           | 0.25       | 30.0                                    | ERWF401LGC123MFH0M |                    |
|                       | 3,900     | 63.5 × 115         | 0.25  | 12.1                                    | ERWF351LGC392MDB5M |                       | 15,000    | 100 × 190          | 0.25       | 33.7                                    | ERWF401LGC153MGK0M |                    |
|                       | 4,700     | 63.5 × 130         | 0.25  | 14.0                                    | ERWF351LGC472MDD0M |                       | 18,000    | 100 × 220          | 0.25       | 37.4                                    | ERWF401LGC183MGN0M |                    |
|                       | 5,600     | 63.5 × 155         | 0.25  | 16.6                                    | ERWF351LGC562MDF5M |                       | 450       | 820                | 50 × 60    | 0.25                                    | 4.00               | ERWF451LGC821MC60M |
|                       | 5,600     | 76.2 × 115         | 0.25  | 16.1                                    | ERWF351LGC562MEB5M |                       |           | 1,000              | 50 × 75    | 0.25                                    | 4.80               | ERWF451LGC102MC75M |
|                       | 6,800     | 63.5 × 190         | 0.25  | 20.0                                    | ERWF351LGC682MDK0M |                       |           | 1,200              | 50 × 85    | 0.25                                    | 5.60               | ERWF451LGC122MC85M |
|                       | 6,800     | 76.2 × 130         | 0.25  | 18.6                                    | ERWF351LGC682MED0M |                       |           | 1,200              | 50 × 96    | 0.25                                    | 5.70               | ERWF451LGC122MC96M |
|                       | 8,200     | 76.2 × 155         | 0.25  | 22.2                                    | ERWF351LGC822MEF5M |                       |           | 1,500              | 50 × 96    | 0.25                                    | 6.30               | ERWF451LGC152MC96M |
|                       | 10,000    | 76.2 × 170         | 0.25  | 25.2                                    | ERWF351LGC103MEH0M |                       |           | 1,800              | 50 × 115   | 0.25                                    | 7.60               | ERWF451LGC182MCB5M |
|                       | 12,000    | 89 × 155           | 0.25  | 29.1                                    | ERWF351LGC123MFF5M |                       |           | 2,200              | 50 × 130   | 0.25                                    | 8.80               | ERWF451LGC222MCD0M |
|                       | 15,000    | 89 × 190           | 0.25  | 35.7                                    | ERWF351LGC153MFK0M |                       |           | 2,700              | 63.5 × 115 | 0.25                                    | 10.1               | ERWF451LGC272MDB5M |
| 18,000                | 100 × 190 | 0.25               | 36.9  | ERWF351LGC183MGK0M                      | 3,300              | 63.5 × 130            |           | 0.25               | 11.7       | ERWF451LGC332MDD0M                      |                    |                    |
| 22,000                | 100 × 250 | 0.25               | 46.1  | ERWF351LGC223MGR0M                      | 3,900              | 63.5 × 155            |           | 0.25               | 13.8       | ERWF451LGC392MDF5M                      |                    |                    |
| 400                   | 1,000     | 50 × 60            | 0.25  | 4.40                                    | ERWF401LGC102MC60M | 3,900                 |           | 76.2 × 115         | 0.25       | 13.4                                    | ERWF451LGC392MEB5M |                    |
|                       | 1,500     | 50 × 75            | 0.25  | 5.90                                    | ERWF401LGC152MC75M | 4,700                 |           | 63.5 × 190         | 0.25       | 16.7                                    | ERWF451LGC472MDK0M |                    |
|                       | 1,800     | 50 × 85            | 0.25  | 6.80                                    | ERWF401LGC182MC85M | 4,700                 |           | 76.2 × 130         | 0.25       | 15.5                                    | ERWF451LGC472MED0M |                    |
|                       | 1,800     | 50 × 96            | 0.25  | 7.00                                    | ERWF401LGC182MC96M | 5,600                 |           | 76.2 × 155         | 0.25       | 18.3                                    | ERWF451LGC562MEF5M |                    |
|                       | 2,200     | 50 × 105           | 0.25  | 8.00                                    | ERWF401LGC222MCA5M | 6,800                 |           | 76.2 × 170         | 0.25       | 20.7                                    | ERWF451LGC682MEH0M |                    |
|                       | 2,700     | 50 × 130           | 0.25  | 9.80                                    | ERWF401LGC272MCD0M | 8,200                 |           | 89 × 155           | 0.25       | 24.1                                    | ERWF451LGC822MFF5M |                    |
|                       | 3,300     | 63.5 × 115         | 0.25  | 11.1                                    | ERWF401LGC332MDB5M | 10,000                | 89 × 170  | 0.25               | 27.8       | ERWF451LGC103MFH0M                      |                    |                    |
|                       | 3,900     | 63.5 × 130         | 0.25  | 12.7                                    | ERWF401LGC392MDD0M | 12,000                | 100 × 190 | 0.25               | 29.3       | ERWF451LGC123MGK0M                      |                    |                    |
|                       | 4,700     | 63.5 × 155         | 0.25  | 15.2                                    | ERWF401LGC472MDF5M | 15,000                | 100 × 250 | 0.25               | 37.0       | ERWF451LGC153MGR0M                      |                    |                    |
|                       | 4,700     | 76.2 × 115         | 0.25  | 14.7                                    | ERWF401LGC472MEB5M |                       |           |                    |            |   |                    |                    |

◆RATED RIPPLE CURRENT MULTIPLIERS

● Frequency Multipliers

| Frequency (Hz) | 50  | 120 | 300 | 1k  | 3k  |
|----------------|-----|-----|-----|-----|-----|
| Coefficient    | 0.8 | 1.0 | 1.1 | 1.3 | 1.4 |

Note : The endurance of capacitors is reduced with internal heating produced by ripple current at the rate of halving the lifetime with every 5 to 10°C rise. When long life performance is required in actual use, the rms ripple current has to be reduced. Also, for the RWF series capacitors, using them at operating voltage less than their rated voltage can extend their lifetime. For details, please contact a representative of Nippon Chemi-Con.



## Стандарт Электрон Связь

Мы молодая и активно развивающаяся компания в области поставок электронных компонентов. Мы поставляем электронные компоненты отечественного и импортного производства напрямую от производителей и с крупнейших складов мира.

Благодаря сотрудничеству с мировыми поставщиками мы осуществляем комплексные и плановые поставки широчайшего спектра электронных компонентов.

Собственная эффективная логистика и склад в обеспечивает надежную поставку продукции в точно указанные сроки по всей России.

Мы осуществляем техническую поддержку нашим клиентам и предпродажную проверку качества продукции. На все поставляемые продукты мы предоставляем гарантию .

Осуществляем поставки продукции под контролем ВП МО РФ на предприятия военно-промышленного комплекса России , а также работаем в рамках 275 ФЗ с открытием отдельных счетов в уполномоченном банке. Система менеджмента качества компании соответствует требованиям ГОСТ ISO 9001.

Минимальные сроки поставки, гибкие цены, неограниченный ассортимент и индивидуальный подход к клиентам являются основой для выстраивания долгосрочного и эффективного сотрудничества с предприятиями радиоэлектронной промышленности, предприятиями ВПК и научно-исследовательскими институтами России.

С нами вы становитесь еще успешнее!

### Наши контакты:

**Телефон:** +7 812 627 14 35

**Электронная почта:** [sales@st-electron.ru](mailto:sales@st-electron.ru)

**Адрес:** 198099, Санкт-Петербург,  
Промышленная ул, дом № 19, литера Н,  
помещение 100-Н Офис 331