

LTM4608AEV: 8A Step-Down Power µModule® Regulator

DESCRIPTION

Demonstration circuit DC1400A features the LTM®4608AEV, the high efficiency, high density switch mode step-down power module. The input voltage range is 2.5V to 5.5V. The output voltage is jumper selectable from 0.6V to 3.3V. The rated load current is 8A although derating is necessary for certain V_{IN} , V_{OUT} and thermal conditions. LTM4608A offers a novel phase-shift clock output to support current sharing with other regulators. The TRACK/SS pin allows the user to program output voltage ramp-up and ramp-down slew rate. The same pin also allows the output to

coincidentally or ratiometrically track another voltage rail. The margining function is provided for users who wish to stress their systems by varying supply voltages during testing. The LTM4608A data sheet must be read in conjunction with this demo manual prior to working on or modifying the DC1400A

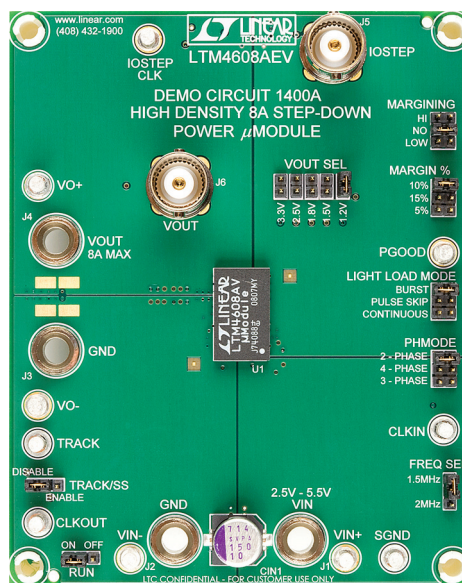
Design files for this circuit board are available at <http://www.linear.com/demo>

LT, LTC, LTM, µModule, Linear Technology and the Linear logo are registered trademarks of Linear Technology Corporation. All other trademarks are the property of their respective owners.

PERFORMANCE SUMMARY (T_A = 25°C)

PARAMETER	CONDITION	VALUE
Input Voltage Range		2.5V to 5.5V
Output Voltage Range	Jumper Selectable (Open for 0.6V)	1.2V, 1.5V, 1.8V, 2.5V, 3.3V; ±2%
Maximum Continuous Output Current	Derating is Necessary for Certain V_{IN} , V_{OUT} and Thermal Conditions	8A DC
Default Operating Frequency		1.5MHz
Efficiency	$V_{IN} = 5V$, $V_{OUT} = 2.5V$, $I_{OUT} = 8A$	84.5%, See Figure 3 for More Information

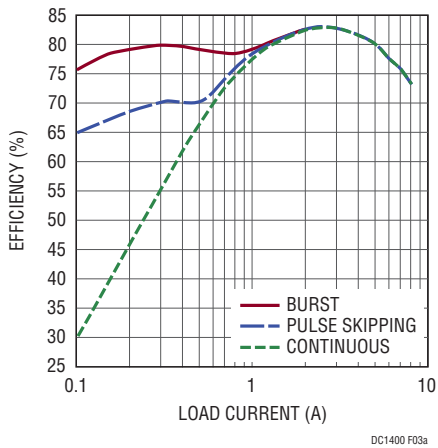
BOARD PHOTO



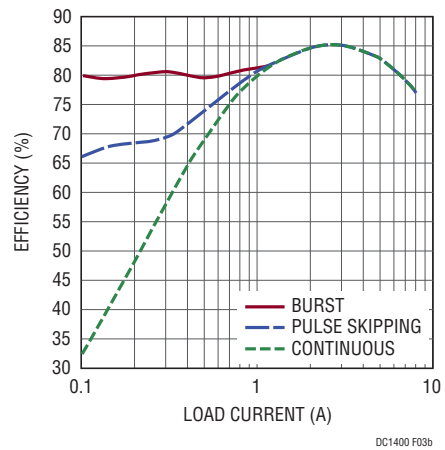
dc1400af

QUICK START PROCEDURE

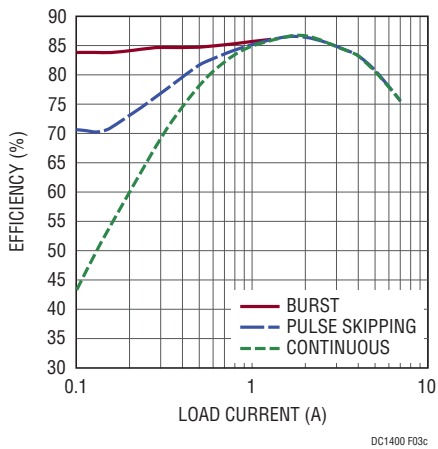
Efficiency vs Load Current with 5V_{IN}, 1.2V_{OUT}



Efficiency vs Load Current with 5V_{IN}, 1.5V_{OUT}



Efficiency vs Load Current with 3.3V_{IN}, 1.2V_{OUT}



Efficiency vs Load Current with 3.3V_{IN}, 1.5V_{OUT}

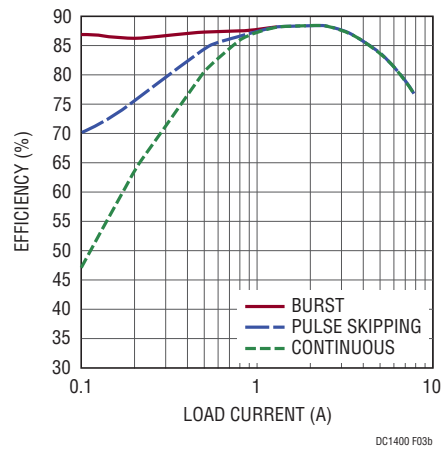


Figure 3. Measured Supply Efficiency with Different V_{IN} and V_{OUT}

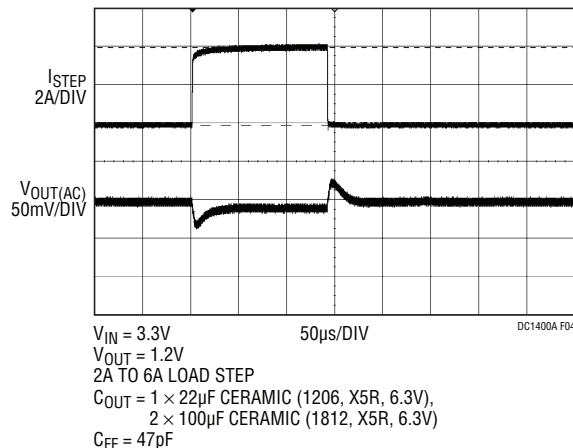


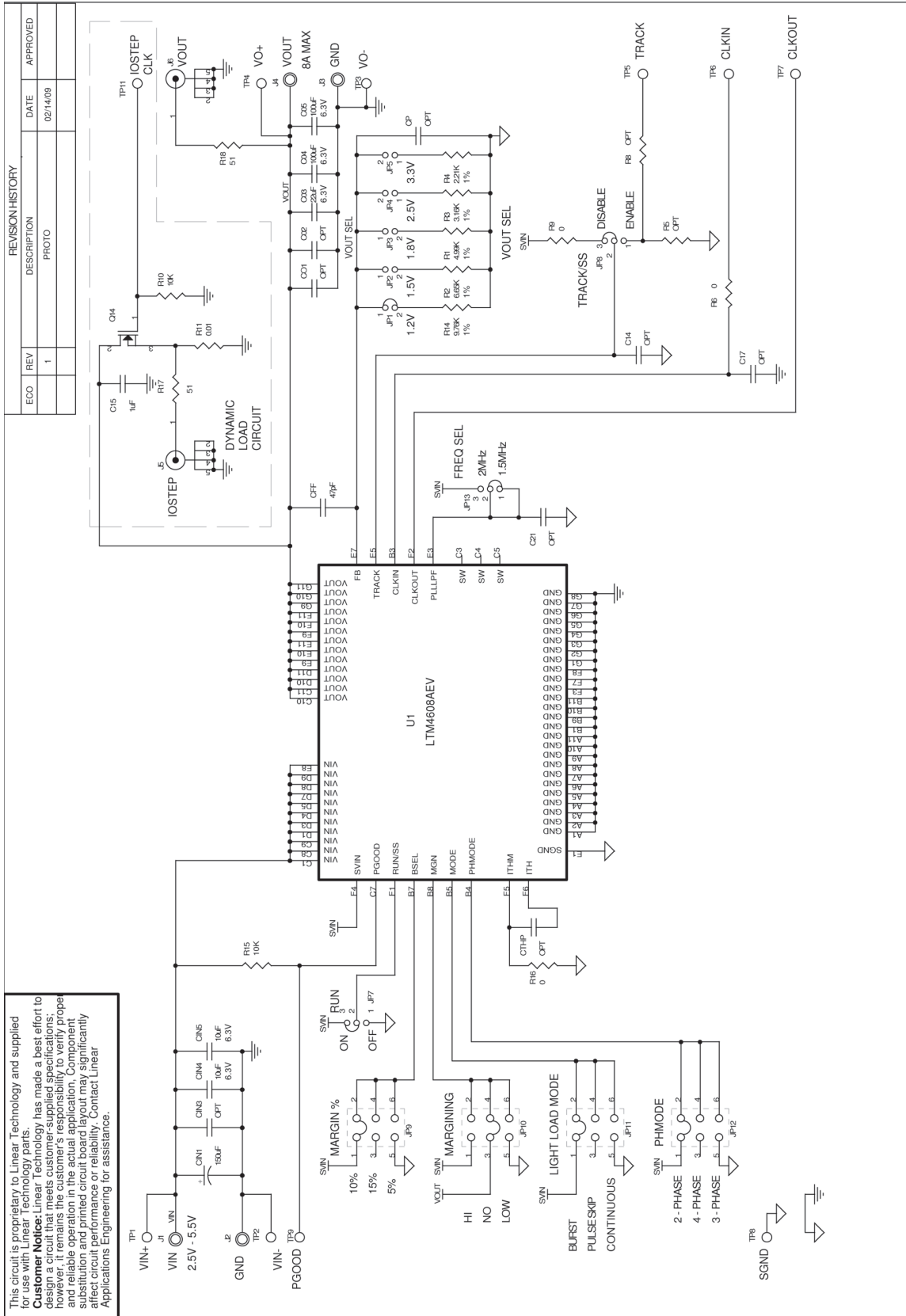
Figure 4. Measured Load Transient Response (4A Step, 25% to 75%)



DEMO MANUAL DC1400A

PARTS LIST

ITEM	QTY	REFERENCE	DESCRIPTION	MANUFACTURER'S PART NUMBER
Required Circuit Components				
1	1	CFF	CAP, 0603 47pF 10% 25V NPO	AVX 06033A470KAT
2	1	CIN1	CAP, 150μF 20% 10V ELEC	SANYO 10SVPA150MAA
3	2	CIN5, CIN4	CAP, 0805 10μF 10% 6.3V X5R	AVX 08056D106KAT2A
4	1	C03	CAP, 1206 22μF 20% 6.3V X5R	AVX 12066D226MAT2A
5	2	C05, C04	CAP, 1812 100μF 20% 6.3V X5R	TDK C4532X5R0J107MZ
6	1	R14	RES, 0603 9.76k 1% 1/10W	VISHAY CRCW06039K76FKEA
7	1	U1	IC, LOW VOLTAGE POWER MODULE	LINEAR TECH. LTM4608AEV
Additional Demo Board Circuit Components				
1	0	C02, CIN3	CAP, 1812 100μF 20% 6.3V X5R OPTION	TDK C4532X5R0J107MZ OPTION
2	0	C01	CAP, 1812 OPTION	TAIYO YUDEN JMK432BJ107MU-T OPTION
3	0	C14, C21, CTHP, CP	CAP, 0603 OPTION	OPTION
4	1	C15	CAP, 0603 1μF 20% 10V X5R	TAIYO YUDEN LMK107BJ105MA-T
5	0	C17	CAP, 0603 1μF 20% 16V X5R OPTION	TDK C1608X7R1C105M OPTION
6	1	Q14	XSTR, MOSFET	VISHAY SUD50N03-09CP-E3
7	1	R1	RES, 0603 4.99k 1% 1/10W	VISHAY CRCW06034K99FKEA
8	1	R2	RES, 0603 6.65k 1% 1/10W	VISHAY CRCW06036K65FKEA
9	1	R3	RES, 0603 3.16k 1% 1/10W	VISHAY CRCW06033K16FKEA
10	1	R4	RES, 0603 2.21k 1% 1/10W	VISHAY CRCW06032K21FKEA
11	0	R8, R5	RES, 0603 OPTION	OPTION
12	3	R6, R9, R16	RES, 0603 0Ω JUMPER	VISHAY CRCW06030000Z0EA
13	2	R10, R15	RES, 0603 10k 5% 1/10W	VISHAY CRCW060310K0JNEA
14	1	R11	RES, 2512 0.01Ω 1% 1W	PANASONIC ERJ-M1WSF10MU
15	2	R18, R17	RES, 0603 51Ω 5% 1/10W	VISHAY CRCW060351R0JNEA
Hardware				
1	5	JP1, JP2, JP3, JP4, JP5	HEADER, 2-PIN, 2mm	SAMTEC TMM 102-02-L-S
2	3	JP7, JP8, JP13	HEADER, 3-PIN, 2mm	SAMTEC TMM-103-02-L-S
3	4	JP9, JP10, JP11, JP12	HEADER, 3 × 2 2mm	SAMTEC TMM-103-02-L-D
4	4	J1, J2, J3, J4	JACK, BANANA	KEYSTONE 575-4
5	2	J5, J6	CONN, BNC, 5 PINS	CONNEX 112404
6	10	TP1-TP9, TP11	TURRET	MILL MAX 2501-2-00-80-00-00-07-0
7	8	JP1, JP7-JP13	SHUNT, 2mm	SAMTEC 2SN-BK-G
8	4		STANDOFF, SNAP ON	KEYSTONE_8834

SCHEMATIC DIAGRAM



 1030 McCarty Blvd Milpitas, CA 95035 Tel: (415) 964-7000 Fax: (415) 964-5007		TITLE SCH1, LTM4608AEV, HIGH DENSITY 8A STEP-DOWN POWER μ MODULE	
CONTRACT NO.	APPROVALS	DATE	REV
	DRAWN MEI	02/14/09	1
	CHECKED		
	APPROVED		
	ENGINEER		
	DESIGNER		
	Tuesday, May 13, 2008		
UNLESS OTHERWISE SPECIFIED DIMENSIONS ARE IN INCHES TOLERANCE ON ANGLES... 2 PLACES... 3 PLACES... MIL PRECISION ANGLE REF. AS SHOWN	THIRD ANGLE PROJECTION	SCALE: NONE	FILENAME: 1400A-1.DSN
 DO NOT SCALE DRAWING	SIZE CAGE CODE DWG NO DC1400A	SHEET 1 OF 1	SCALE: NONE FILENAME: 1400A-1.DSN SHEET 1 OF 1

This circuit is proprietary to Linear Technology and supplied for use with Linear Technology parts.
 Customer Notice: Linear Technology has made a best effort to ensure that the information provided is accurate and reliable; however, it remains the customer's responsibility to verify proper and reliable operation in the actual application. Component substitution and printed circuit board layout may significantly affect circuit performance or reliability. Contact Linear Applications Engineering for assistance.

DEMO MANUAL DC1400A

DEMONSTRATION BOARD IMPORTANT NOTICE

Linear Technology Corporation (LTC) provides the enclosed product(s) under the following **AS IS** conditions:

This demonstration board (DEMO BOARD) kit being sold or provided by Linear Technology is intended for use for **ENGINEERING DEVELOPMENT OR EVALUATION PURPOSES ONLY** and is not provided by LTC for commercial use. As such, the DEMO BOARD herein may not be complete in terms of required design-, marketing-, and/or manufacturing-related protective considerations, including but not limited to product safety measures typically found in finished commercial goods. As a prototype, this product does not fall within the scope of the European Union directive on electromagnetic compatibility and therefore may or may not meet the technical requirements of the directive, or other regulations.

If this evaluation kit does not meet the specifications recited in the DEMO BOARD manual the kit may be returned within 30 days from the date of delivery for a full refund. **THE FOREGOING WARRANTY IS THE EXCLUSIVE WARRANTY MADE BY THE SELLER TO BUYER AND IS IN LIEU OF ALL OTHER WARRANTIES, EXPRESSED, IMPLIED, OR STATUTORY, INCLUDING ANY WARRANTY OF MERCHANTABILITY OR FITNESS FOR ANY PARTICULAR PURPOSE. EXCEPT TO THE EXTENT OF THIS INDEMNITY, NEITHER PARTY SHALL BE LIABLE TO THE OTHER FOR ANY INDIRECT, SPECIAL, INCIDENTAL, OR CONSEQUENTIAL DAMAGES.**

The user assumes all responsibility and liability for proper and safe handling of the goods. Further, the user releases LTC from all claims arising from the handling or use of the goods. Due to the open construction of the product, it is the user's responsibility to take any and all appropriate precautions with regard to electrostatic discharge. Also be aware that the products herein may not be regulatory compliant or agency certified (FCC, UL, CE, etc.).

No License is granted under any patent right or other intellectual property whatsoever. **LTC assumes no liability for applications assistance, customer product design, software performance, or infringement of patents or any other intellectual property rights of any kind.**

LTC currently services a variety of customers for products around the world, and therefore this transaction **is not exclusive**.

Please read the DEMO BOARD manual prior to handling the product. Persons handling this product must have electronics training and observe good laboratory practice standards. **Common sense is encouraged.**

This notice contains important safety information about temperatures and voltages. For further safety concerns, please contact a LTC application engineer.

Mailing Address:

Linear Technology
1630 McCarthy Blvd.
Milpitas, CA 95035

Copyright © 2004, Linear Technology Corporation



Стандарт Электрон Связь

Мы молодая и активно развивающаяся компания в области поставок электронных компонентов. Мы поставляем электронные компоненты отечественного и импортного производства напрямую от производителей и с крупнейших складов мира.

Благодаря сотрудничеству с мировыми поставщиками мы осуществляем комплексные и плановые поставки широчайшего спектра электронных компонентов.

Собственная эффективная логистика и склад в обеспечивает надежную поставку продукции в точно указанные сроки по всей России.

Мы осуществляем техническую поддержку нашим клиентам и предпродажную проверку качества продукции. На все поставляемые продукты мы предоставляем гарантию .

Осуществляем поставки продукции под контролем ВП МО РФ на предприятия военно-промышленного комплекса России , а также работаем в рамках 275 ФЗ с открытием отдельных счетов в уполномоченном банке. Система менеджмента качества компании соответствует требованиям ГОСТ ISO 9001.

Минимальные сроки поставки, гибкие цены, неограниченный ассортимент и индивидуальный подход к клиентам являются основой для выстраивания долгосрочного и эффективного сотрудничества с предприятиями радиоэлектронной промышленности, предприятиями ВПК и научно-исследовательскими институтами России.

С нами вы становитесь еще успешнее!

Наши контакты:

Телефон: +7 812 627 14 35

Электронная почта: sales@st-electron.ru

Адрес: 198099, Санкт-Петербург,
Промышленная ул, дом № 19, литера Н,
помещение 100-Н Офис 331