



## DATA SHEET

# BIPOLAR ANALOG INTEGRATED CIRCUIT

# $\mu$ PC8179TK

## 3 V SILICON MMIC LOW CURRENT AMPLIFIER FOR MOBILE COMMUNICATIONS

### DESCRIPTION

The  $\mu$ PC8179TK is a silicon monolithic integrated circuit designed as amplifier for mobile communications. This IC can realize low current consumption with external chip inductor which can not be realized on internal 50  $\Omega$  wide band matched IC.  $\mu$ PC8179TK adopts 6-pin lead-less minimold package using same chip as the conventional  $\mu$ PC8179TB in 6-pin super minimold.

TK suffix IC which is smaller package than TB suffix IC contributes to reduce mounting space by 50%.

This IC is manufactured using our 30 GHz  $f_{max}$  UHS0 (Ultra High Speed Process) silicon bipolar process.

### FEATURES

- Low current consumption :  $I_{CC} = 4.0$  mA TYP. @  $V_{CC} = 3.0$  V
- Supply voltage :  $V_{CC} = 2.4$  to 3.3 V
- Excellent isolation : ISL = 43.0 dB TYP. @  $f = 1.0$  GHz  
ISL = 42.0 dB TYP. @  $f = 1.9$  GHz  
ISL = 42.0 dB TYP. @  $f = 2.4$  GHz
- Power gain :  $G_P = 13.5$  dB TYP. @  $f = 1.0$  GHz  
 $G_P = 15.5$  dB TYP. @  $f = 1.9$  GHz  
 $G_P = 16.0$  dB TYP. @  $f = 2.4$  GHz
- Gain 1 dB compression output power :  $P_{O(1\text{ dB})} = +2.0$  dBm TYP. @  $f = 1.0$  GHz  
 $P_{O(1\text{ dB})} = +0.5$  dBm TYP. @  $f = 1.9$  GHz  
 $P_{O(1\text{ dB})} = +0.5$  dBm TYP. @  $f = 2.4$  GHz
- Operating frequency : 0.1 to 2.4 GHz (Output port LC matching)
- High-density surface mounting : 6-pin lead-less minimold package (1.5  $\times$  1.3  $\times$  0.55 mm)
- Light weight : 3 mg (Standard value)

### APPLICATION

- Buffer amplifiers on 0.1 to 2.4 GHz mobile communications system

**Caution: Observe precautions when handling because these devices are sensitive to electrostatic discharge**

The information in this document is subject to change without notice. Before using this document, please confirm that this is the latest version.

**ORDERING INFORMATION**

| Part Number  | Order Number   | Package   | Marking | Supplying Form   |
|--------------|----------------|---|---------|--|
| μPC8179TK-E2 | μPC8179TK-E2-A | 6-pin lead-less minimold (1511) (Pb-Free) <sup>Note</sup> | 6C      | <ul style="list-style-type: none"> <li>• Embossed tape 8 mm wide</li> <li>• Pin 1, 6 face the perforation side of the tape</li> <li>• Qty 5 kpcs/reel</li> </ul> |

**Note** With regards to terminal solder (the solder contains lead) plated products (conventionally plated), contact your nearby sales office.

**Remark** To order evaluation samples, contact your nearby sales office.

Part number for sample order: μPC8179TK-A

**PRODUCT LINE-UP (T<sub>A</sub> = +25°C, V<sub>CC</sub> = V<sub>out</sub> = 3.0 V, Z<sub>S</sub> = Z<sub>L</sub> = 50 Ω)**

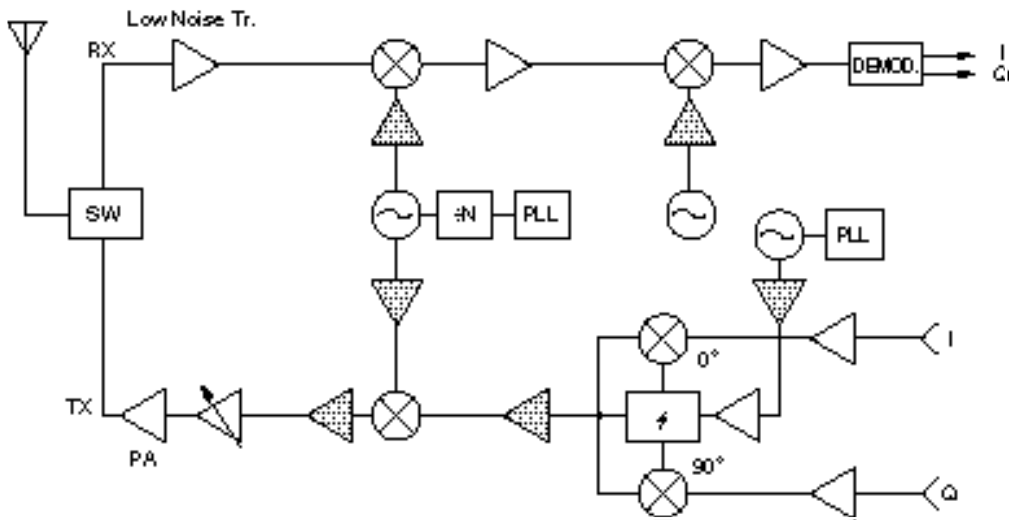
| Parameter<br>Part No. | I <sub>CC</sub><br>(mA) | 1.0 GHz output port<br>matching frequency |             |                               | 1.66 GHz output port<br>matching frequency |             |                               | 1.9 GHz output port<br>matching frequency |             |                               | 2.4 GHz output port<br>matching frequency |             |                               | Marking |
|-----------------------|-------------------------|---|-------------|-------------------------------|--|-------------|-------------------------------|---|-------------|-------------------------------|---|-------------|-------------------------------|---------|
|                       |                         | G <sub>P</sub><br>(dB)                    | ISL<br>(dB) | P <sub>O (1dB)</sub><br>(dBm) | G <sub>P</sub><br>(dB)                     | ISL<br>(dB) | P <sub>O (1dB)</sub><br>(dBm) | G <sub>P</sub><br>(dB)                    | ISL<br>(dB) | P <sub>O (1dB)</sub><br>(dBm) | G <sub>P</sub><br>(dB)                    | ISL<br>(dB) | P <sub>O (1dB)</sub><br>(dBm) |         |
| μPC8178TB             | 1.9                     | 11.0                                      | 39.0        | -4.0                          | -  | -           | -                             | 11.5                                      | 40.0        | -7.0                          | 11.5                                      | 38.0        | -7.5                          | C3B     |
| μPC8178TK             | 1.9                     | 11.0                                      | 40.0        | -5.5                          | -  | -           | -                             | 11.0                                      | 41.0        | -8.0                          | 11.0                                      | 42.0        | -8.0                          | 6B      |
| μPC8179TB             | 4.0                     | 13.5                                      | 44.0        | +3.0                          | -  | -           | -                             | 15.5                                      | 42.0        | +1.5                          | 15.5                                      | 41.0        | +1.0                          | C3C     |
| μPC8179TK             | 4.0                     | 13.5                                      | 43.0        | +2.0                          | -  | -           | -                             | 15.5                                      | 42.0        | +0.5                          | 16.0                                      | 42.0        | +0.5                          | 6C      |
| μPC8128TB             | 2.8                     | 12.5                                      | 39.0        | -4.0                          | 13.0                                       | 39.0        | -4.0                          | 13.0                                      | 37.0        | -4.0                          | -   | -           | -                             | C2P     |
| μPC8151TB             | 4.2                     | 12.5                                      | 38.0        | +2.5                          | 15.0                                       | 36.0        | +1.5                          | 15.0                                      | 34.0        | +0.5                          | -   | -           | -                             | C2U     |
| μPC8152TB             | 5.6                     | 23.0                                      | 40.0        | -4.5                          | 19.5                                       | 38.0        | -8.5                          | 17.5                                      | 35.0        | -8.5                          | -   | -           | -                             | C2V     |

**Remarks 1.** Typical performance. Please refer to **ELECTRICAL CHARACTERISTICS** in detail.

**2.** To know the associated product, please refer to each latest data sheet.

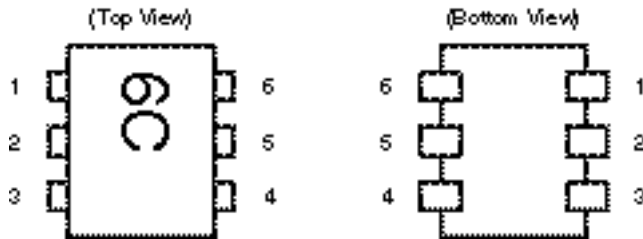
SYSTEM APPLICATION EXAMPLE

Location examples in digital cellular



These ICs can be added to your system around  $\Delta$  parts, when you need more isolation or gain. The application herein, however, shows only examples, therefore the application can depend on your kit evaluation.

**PIN CONNECTIONS**



| Pin No. | Pin Name        |
|---------|-----------------|
| 1       | INPUT           |
| 2       | GND             |
| 3       | GND             |
| 4       | OUTPUT          |
| 5       | GND             |
| 6       | V <sub>cc</sub> |

**PIN EXPLANATION**

| Pin No.     | Pin Name        | Applied Voltage (V)  | Pin Voltage (V)<br><small>Note</small> | Function and Applications  | Internal Equivalent Circuit |
|-------------|-----------------|--|--|--|-----------------------------|
| 1           | INPUT           | –  | 0.90                                   | Signal input pin. A internal matching circuit, configured with resistors, enables 50 Ω connection over a wide band. This pin must be coupled to signal source with capacitor for DC cut.   |                             |
| 2<br>3<br>5 | GND             | 0  | –                                      | Ground pin. This pin should be connected to system ground with minimum inductance. Ground pattern on the board should be formed as wide as possible. All the ground pins must be connected together with wide ground pattern to decrease impedance defference. |                             |
| 4           | OUTPUT          | Voltage as same as V <sub>cc</sub> through external inductor | –                                      | Signal output pin. This pin is designed as collector output. Due to the high impedance output, this pin should be externally equipped with LC matching circuit to next stage. For L, a size 1 005 chip inductor can be chosen.                                 |                             |
| 6           | V <sub>cc</sub> | 2.4 to 3.3   | –                                      | Power supply pin. This pin should be externally equipped with bypass capacitor to minimize its impedance.  |                             |

**Note** Pin voltage is measured at V<sub>cc</sub> = 3.0 V.

**ABSOLUTE MAXIMUM RATINGS**

| Parameter                     | Symbol           | Test Conditions                      | Ratings     | Unit |
|-------------------------------|------------------|--------------------------------------|-------------|------|
| Supply Voltage                | V <sub>CC</sub>  | T <sub>A</sub> = +25°C, Pin 4, Pin 6 | 3.6         | V    |
| Circuit Current               | I <sub>CC</sub>  | T <sub>A</sub> = +25°C               | 15          | mA   |
| Power Dissipation             | P <sub>D</sub>   | T <sub>A</sub> = +85°C <b>Note</b>   | 232         | mW   |
| Operating Ambient Temperature | T <sub>A</sub>   |                                      | -40 to +85  | °C   |
| Storage Temperature           | T <sub>stg</sub> |                                      | -55 to +150 | °C   |
| Input Power                   | P <sub>in</sub>  | T <sub>A</sub> = +25°C               | +5          | dBm  |

**Note** Mounted on double-sided copper-clad 50 × 50 × 1.6 mm epoxy glass PWB

**RECOMMENDED OPERATING RANGE**

| Parameter                     | Symbol          | MIN. | TYP. | MAX. | Unit | Remarks  |
|-------------------------------|-----------------|------|------|------|------|--|
| Supply Voltage                | V <sub>CC</sub> | 2.4  | 3.0  | 3.3  | V    | The same voltage should be applied to pin 4 and pin 6. |
| Operating Ambient Temperature | T <sub>A</sub>  | -40  | +25  | +85  | °C   |  |

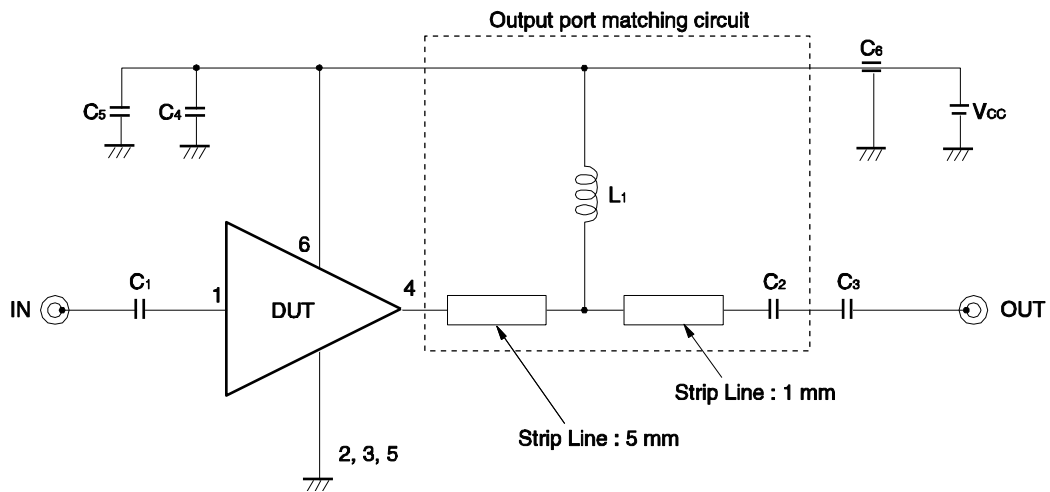
**ELECTRICAL CHARACTERISTICS**

(Unless otherwise specified, T<sub>A</sub> = +25°C, V<sub>CC</sub> = V<sub>out</sub> = 3.0 V, Z<sub>s</sub> = Z<sub>L</sub> = 50 Ω, at LC matched frequency)

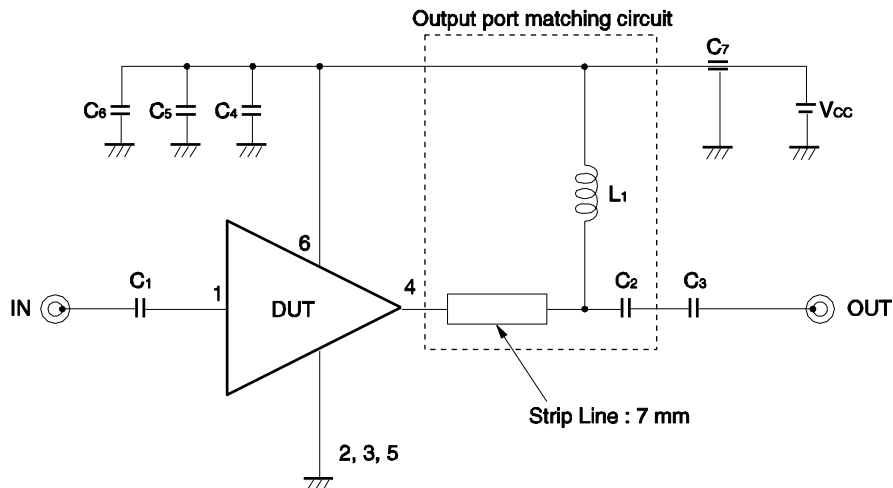
| Parameter                          | Symbol              | Test Conditions  | MIN.                 | TYP.                 | MAX.                 | Unit |
|------------------------------------|---------------------|--|----------------------|----------------------|----------------------|------|
| Circuit Current                    | I <sub>CC</sub>     | No signal  | 2.9                  | 4.0                  | 5.4                  | mA   |
| Power Gain                         | G <sub>P</sub>      | f = 1.0 GHz, P <sub>in</sub> = -30 dBm<br>f = 1.9 GHz, P <sub>in</sub> = -30 dBm<br>f = 2.4 GHz, P <sub>in</sub> = -30 dBm | 11.0<br>13.0<br>14.0 | 13.5<br>15.5<br>16.0 | 15.5<br>17.5<br>18.5 | dB   |
| Isolation                          | ISL                 | f = 1.0 GHz, P <sub>in</sub> = -30 dBm<br>f = 1.9 GHz, P <sub>in</sub> = -30 dBm<br>f = 2.4 GHz, P <sub>in</sub> = -30 dBm | 39.0<br>37.0<br>37.0 | 43.0<br>42.0<br>42.0 | -<br>-<br>-          | dB   |
| Gain 1 dB Compression Output Power | P <sub>O(1dB)</sub> | f = 1.0 GHz<br>f = 1.9 GHz<br>f = 2.4 GHz  | -0.5<br>-2.0<br>-3.0 | +2.0<br>+0.5<br>+0.5 | -<br>-<br>-          | dBm  |
| Noise Figure                       | NF                  | f = 1.0 GHz<br>f = 1.9 GHz<br>f = 2.4 GHz  | -<br>-<br>-          | 5.0<br>5.0<br>5.0    | 6.5<br>6.5<br>6.5    | dB   |
| Input Return Loss                  | RL <sub>in</sub>    | f = 1.0 GHz, P <sub>in</sub> = -30 dBm<br>f = 1.9 GHz, P <sub>in</sub> = -30 dBm<br>f = 2.4 GHz, P <sub>in</sub> = -30 dBm | 4.0<br>4.0<br>6.0    | 7.0<br>7.0<br>9.0    | -<br>-<br>-          | dB   |

TEST CIRCUITS

<1> f = 1.0 GHz



<2> f = 1.9 GHz



<3> f = 2.4 GHz

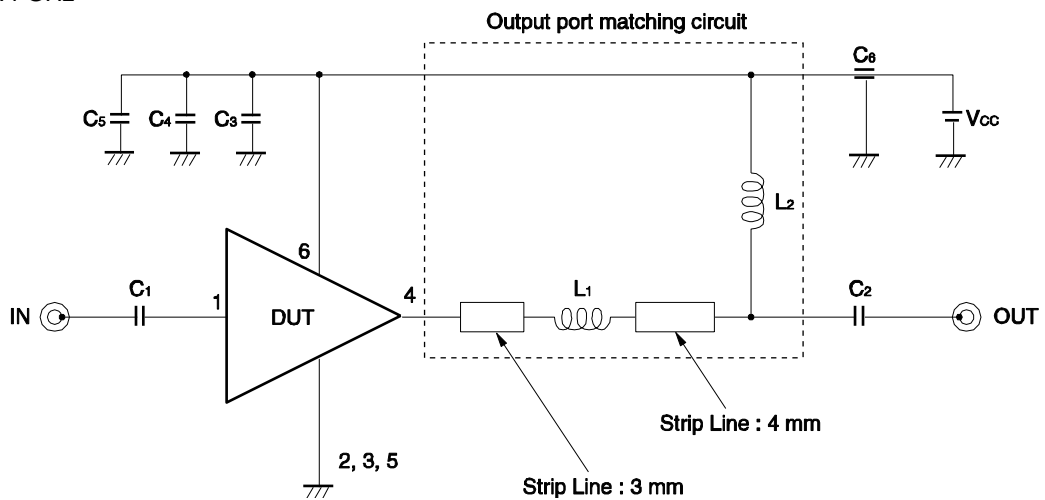
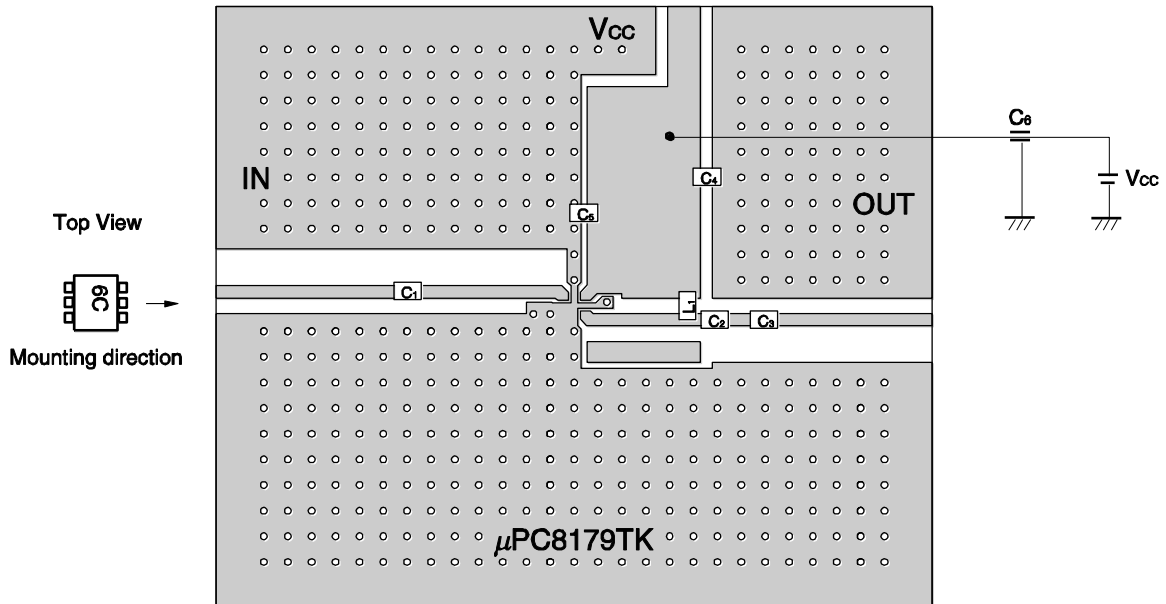


ILLUSTRATION OF THE TEST CIRCUIT ASSEMBLED ON EVALUATION BOARD

<1> f = 1.0 GHz

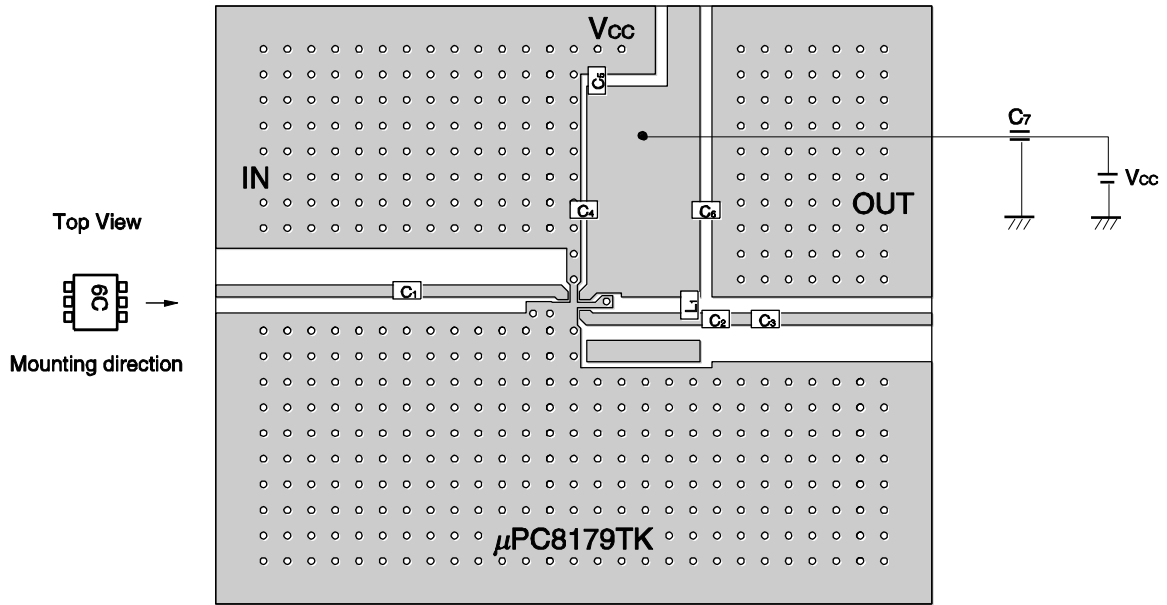


- Remarks 1.** 42 × 35 × 0.4 mm double-sided copper-clad polyimide board  
**2.** Back side: GND pattern  
**3.** Gold plated on pattern  
**4.** ○ :Through holes

**COMPONENT LIST**

| Form                   | Symbol                          | Value    | Type code             | Maker  |
|------------------------|---------------------------------|----------|-----------------------|--------|
| Chip capacitor         | C <sub>1</sub> , C <sub>3</sub> | 1 000 pF | GRM40CH102J50PT       | murata |
|                        | C <sub>2</sub>                  | 0.75 pF  | GRM39CKR75C50PT       | murata |
|                        | C <sub>4</sub>                  | 5 pF     | GRM39CH050C50PT       | murata |
|                        | C <sub>5</sub>                  | 8 pF     | GRM39CH080D50PT       | murata |
| Feed-through Capacitor | C <sub>6</sub>                  | 1 000 pF | DFT301-801 × 7R102S50 | murata |
| Chip inductor          | L <sub>1</sub>                  | 12 nH    | LL1608-FH12N          | TOKO   |

<2> f = 1.9 GHz



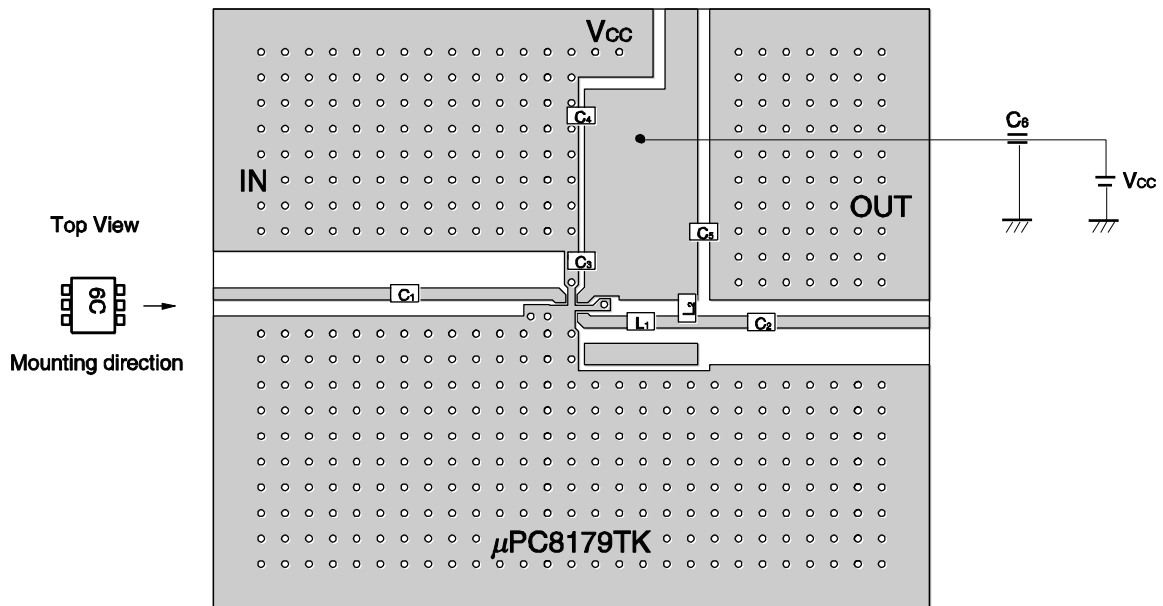
- Remarks 1.** 42 × 35 × 0.4 mm double-sided copper-clad polyimide board  
**2.** Back side: GND pattern  
**3.** Gold plated on pattern  
**4.** o :Through holes

**COMPONENT LIST**

| Form                   | Symbol  | Value    | Type code             | Maker  |
|------------------------|---|----------|-----------------------|--------|
| Chip capacitor         | C <sub>1</sub> , C <sub>3</sub> , C <sub>5</sub> , C <sub>6</sub> | 1 000 pF | GRM40CH102J50PT       | murata |
|                        | C <sub>2</sub>  | 0.5 pF   | GRM39CKR5C50PT        | murata |
|                        | C <sub>4</sub>  | 8 pF     | GRM39CH080D50PT       | murata |
| Feed-through Capacitor | C <sub>7</sub>  | 1 000 pF | DFT301-801 × 7R102S50 | murata |
| Chip inductor          | L <sub>1</sub>  | 2.7 nH   | LL1608-FH2N7S         | TOKO   |



<3> f = 2.4 GHz

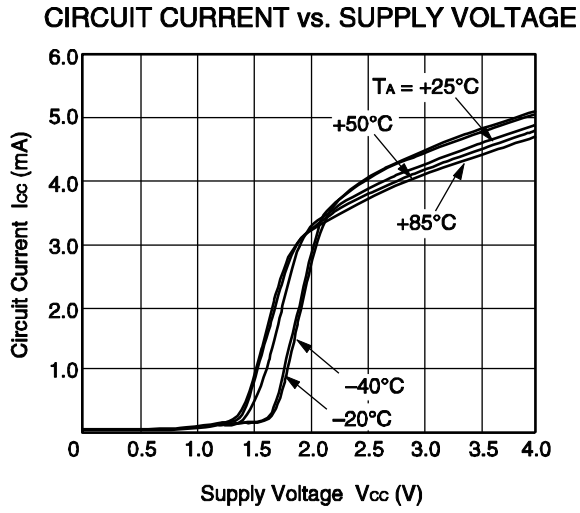


- Remarks 1.** 42 × 35 × 0.4 mm double-sided copper-clad polyimide board  
**2.** Back side: GND pattern  
**3.** Gold plated on pattern  
**4.** ○ :Through holes

**COMPONENT LIST**

| Form                   | Symbol  | Value    | Type code             | Maker  |
|------------------------|---|----------|-----------------------|--------|
| Chip capacitor         | C <sub>1</sub> , C <sub>2</sub> , C <sub>4</sub> , C <sub>5</sub> | 1 000 pF | GRM40CH102J50PT       | murata |
|                        | C <sub>3</sub>  | 10 pF    | GRM39CH100D50PT       | murata |
| Feed-through Capacitor | C <sub>6</sub>  | 1 000 pF | DFT301-801 × 7R102S50 | murata |
| Chip inductor          | L <sub>1</sub>  | 2.7 nH   | LL1608-FH2N7S         | TOKO   |
|                        | L <sub>2</sub>  | 1.8 nH   | LL1608-FH1N8S         | TOKO   |

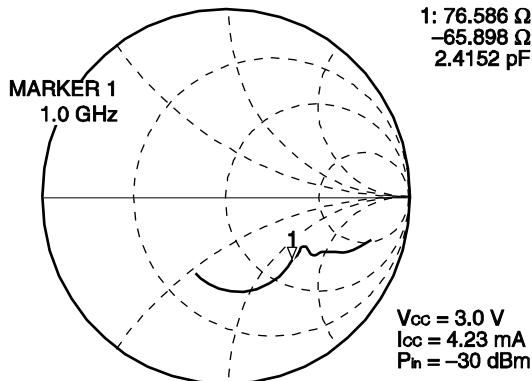
■ TYPICAL CHARACTERISTICS ( $T_A = +25^\circ\text{C}$ , unless otherwise specified)



**Remark** The graph indicates nominal characteristics.

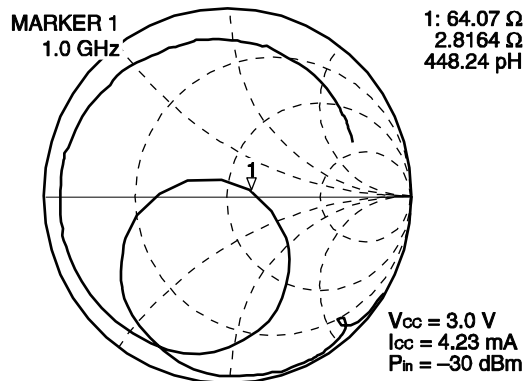
f = 1.0 GHz MATCHING

S11-FREQUENCY



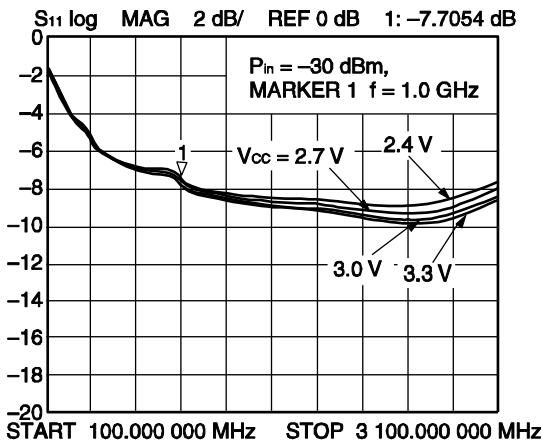
START 100.000 000 MHz STOP 3 100.000 000 MHz

S22-FREQUENCY

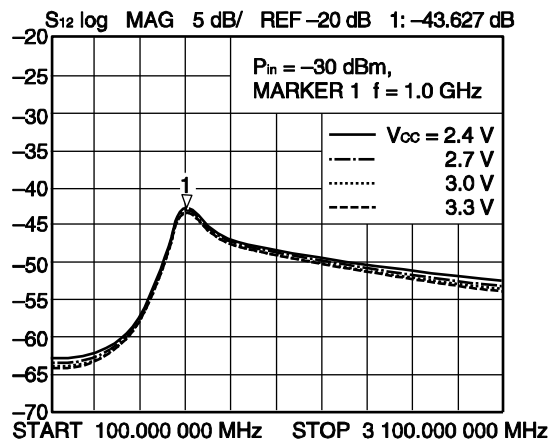


START 100.000 000 MHz STOP 3 100.000 000 MHz

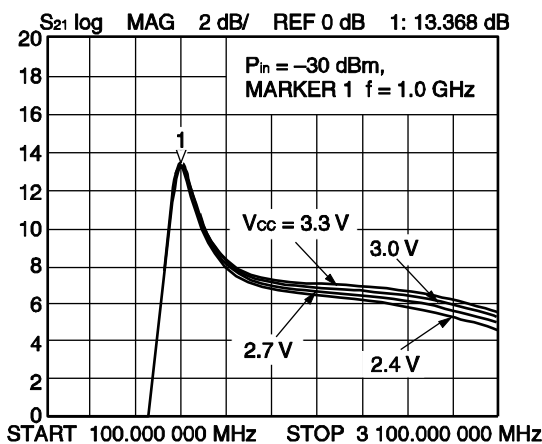
S11-FREQUENCY



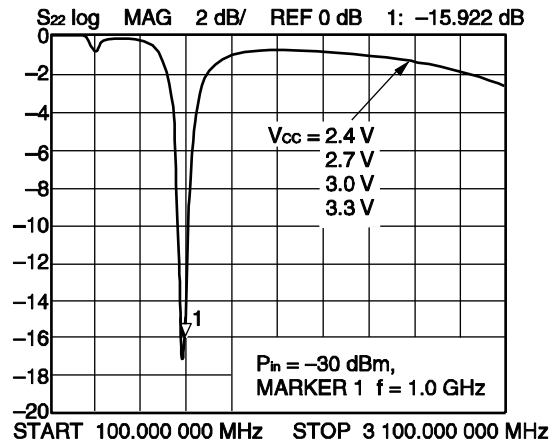
S12-FREQUENCY



S21-FREQUENCY

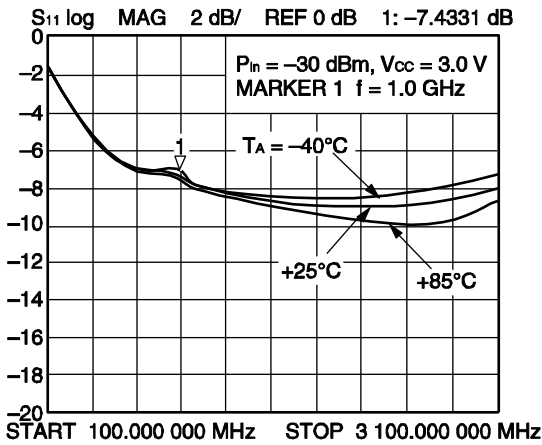


S22-FREQUENCY

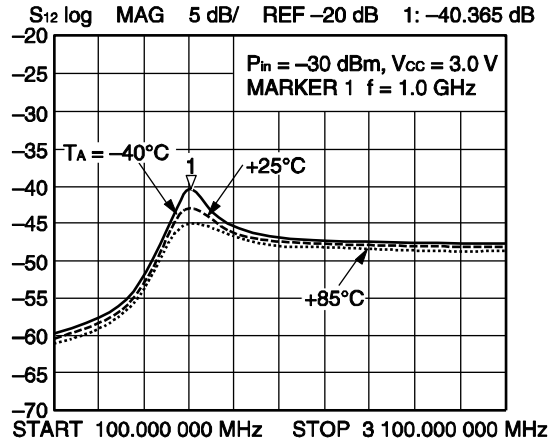


Remark The graphs indicate nominal characteristics.

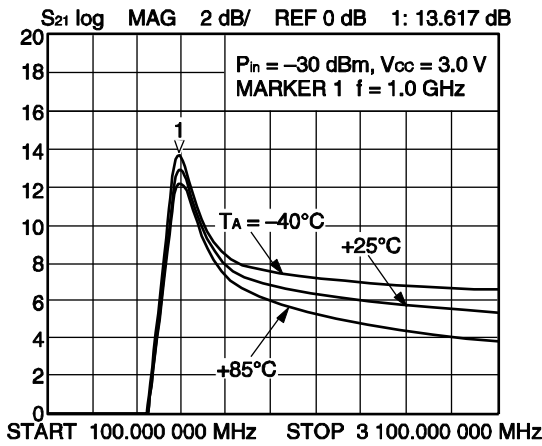
S<sub>11</sub>-FREQUENCY



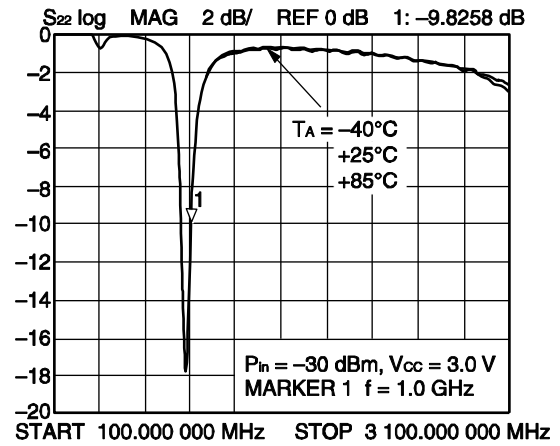
S<sub>12</sub>-FREQUENCY



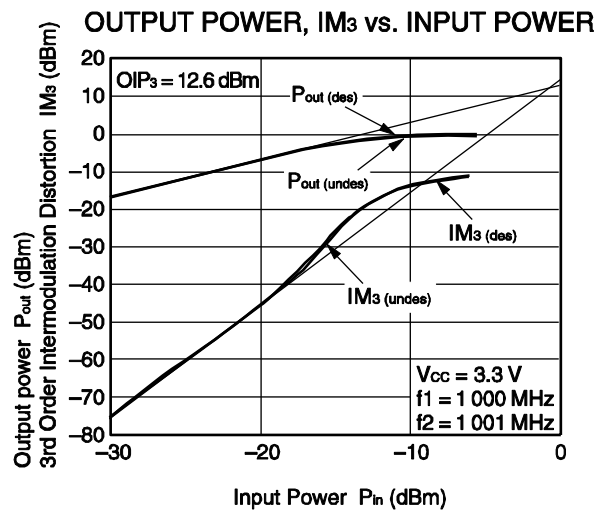
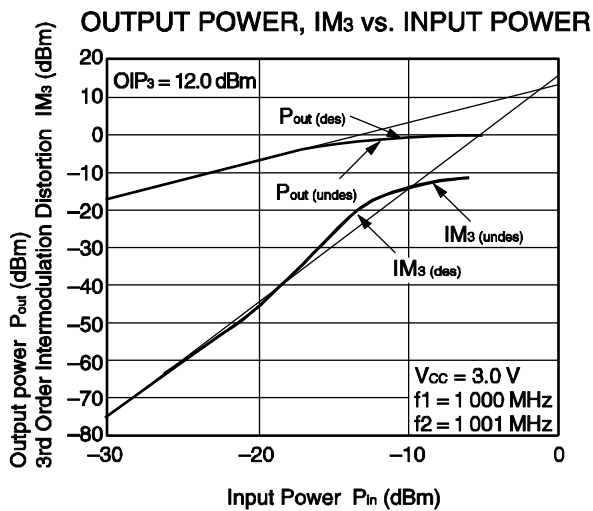
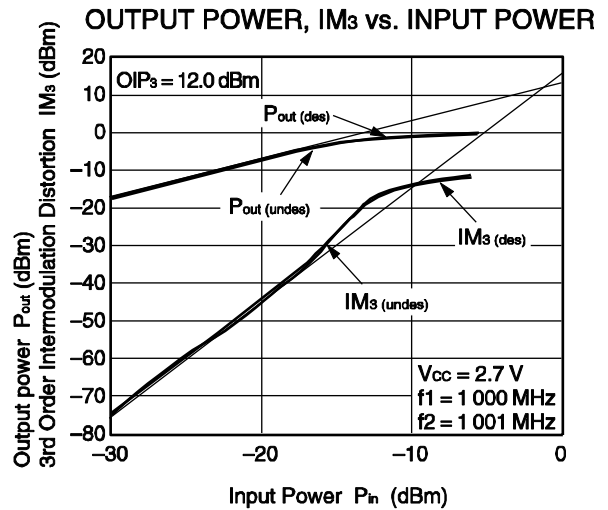
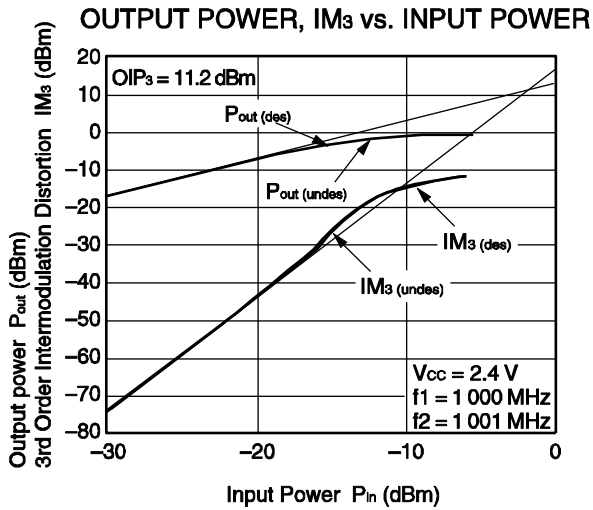
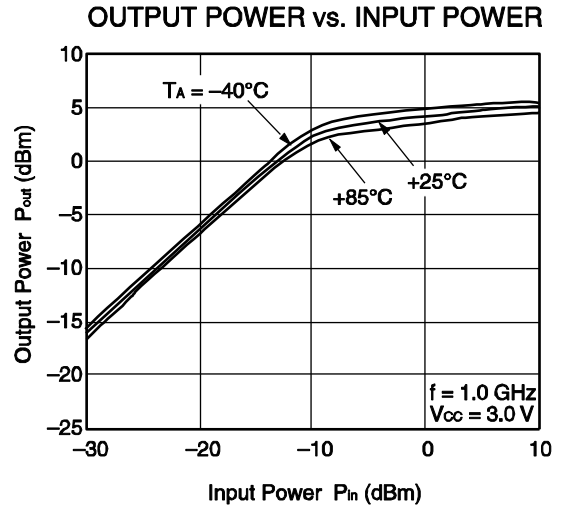
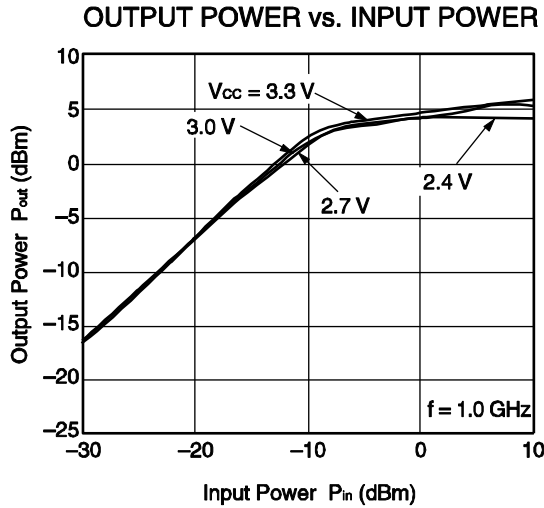
S<sub>21</sub>-FREQUENCY



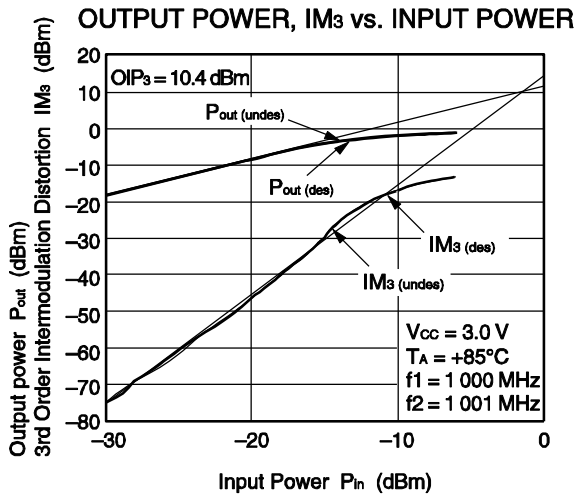
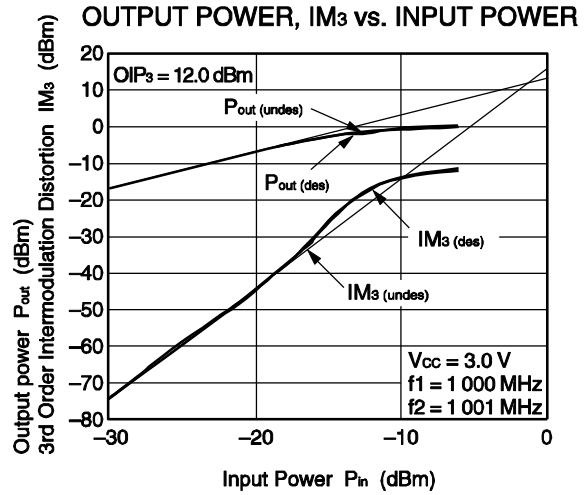
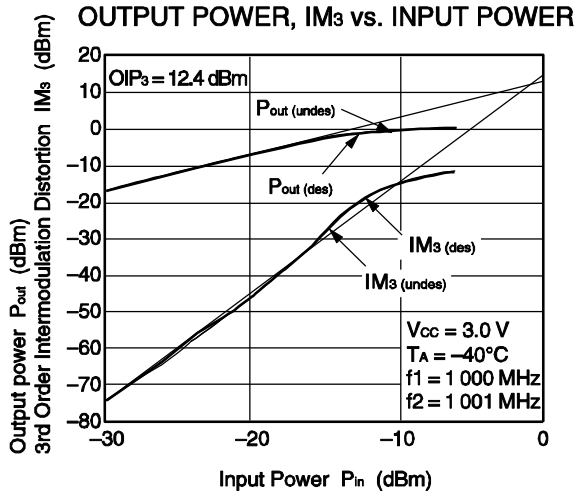
S<sub>22</sub>-FREQUENCY



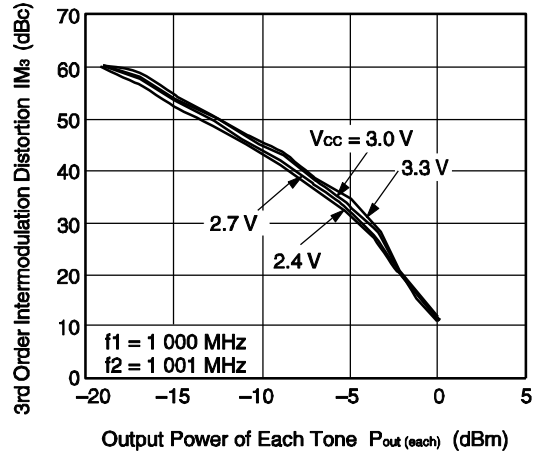
Remark The graphs indicate nominal characteristics.



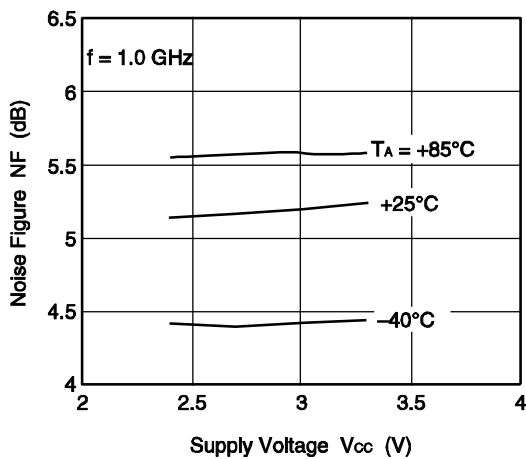
**Remark** The graphs indicate nominal characteristics.



**3RD ORDER INTERMODULATION DISTORTION vs. OUTPUT POWER OF EACH TONE**



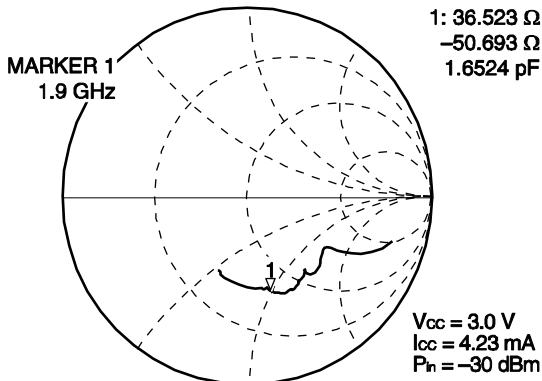
**NOISE FIGURE vs. SUPPLY VOLTAGE**



**Remark** The graphs indicate nominal characteristics.

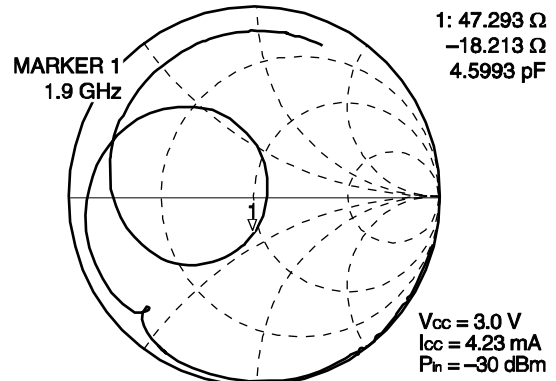
f = 1.9 GHz MATCHING

S11-FREQUENCY



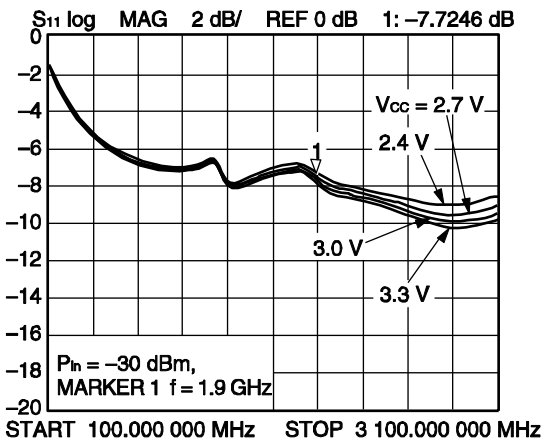
START 100.000 000 MHz STOP 3 100.000 000 MHz

S22-FREQUENCY

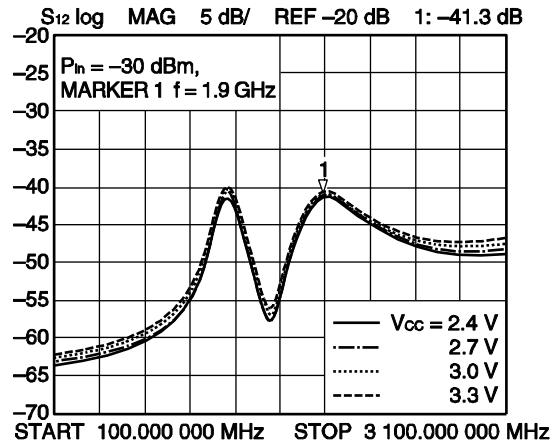


START 100.000 000 MHz STOP 3 100.000 000 MHz

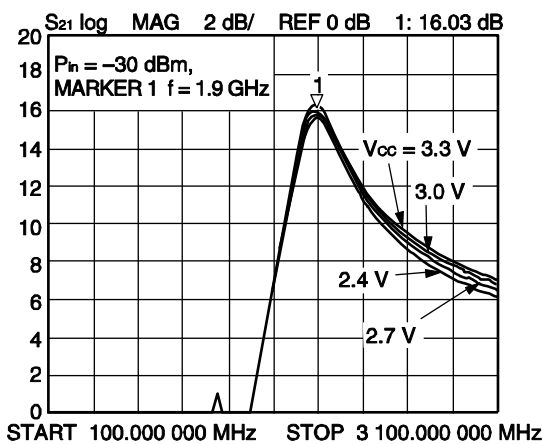
S11-FREQUENCY



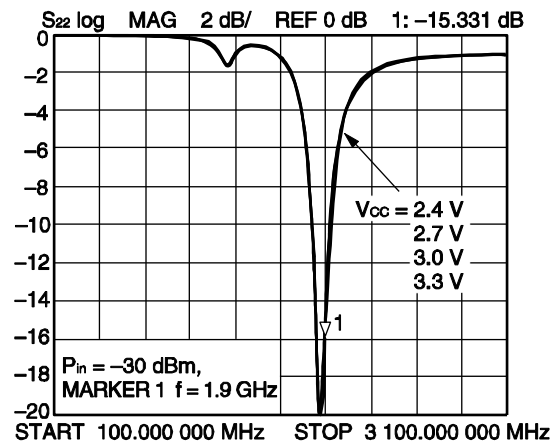
S12-FREQUENCY



S21-FREQUENCY

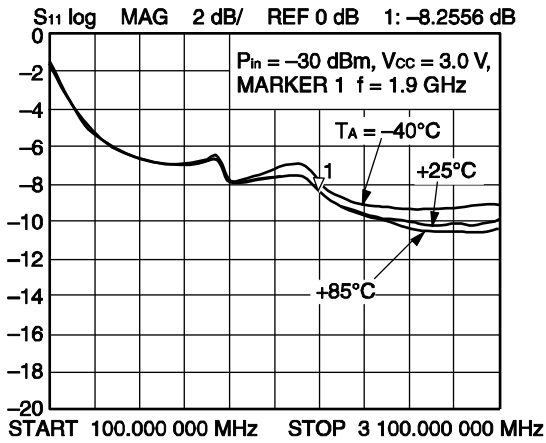


S22-FREQUENCY

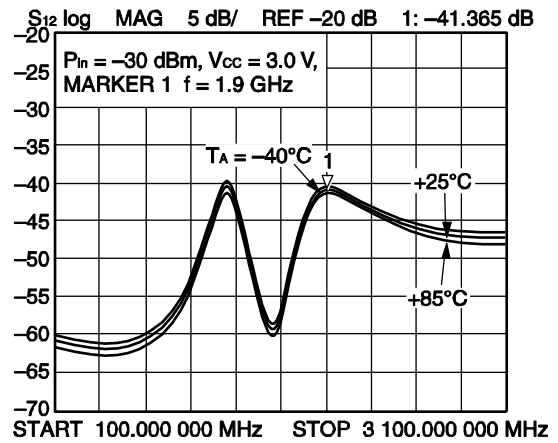


Remark The graphs indicate nominal characteristics.

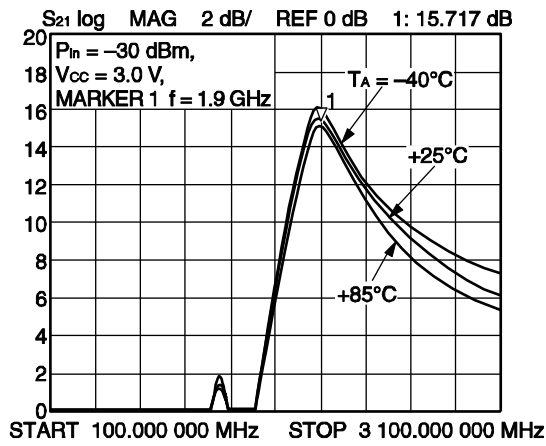
S<sub>11</sub>-FREQUENCY



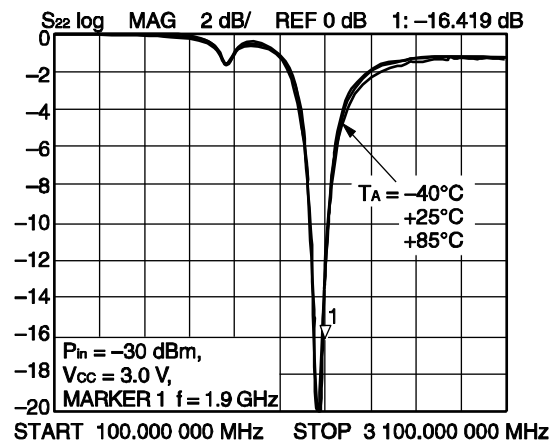
S<sub>12</sub>-FREQUENCY



S<sub>21</sub>-FREQUENCY

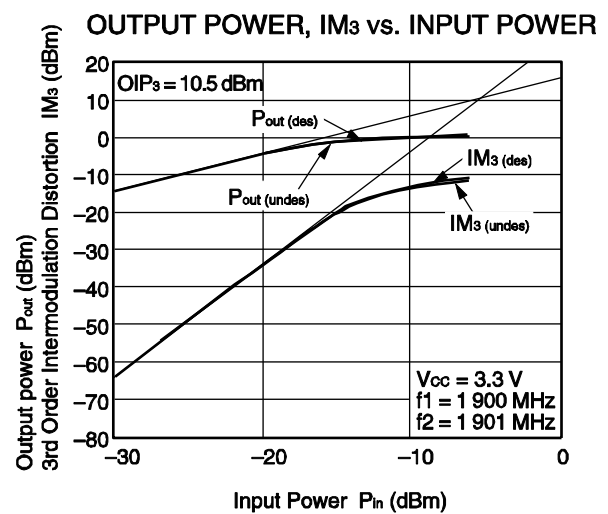
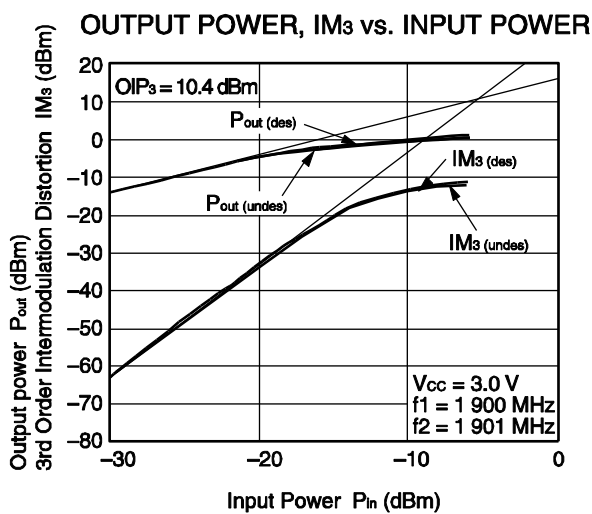
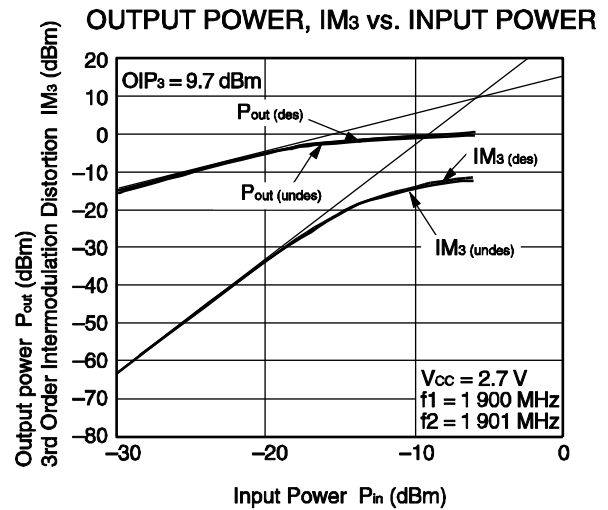
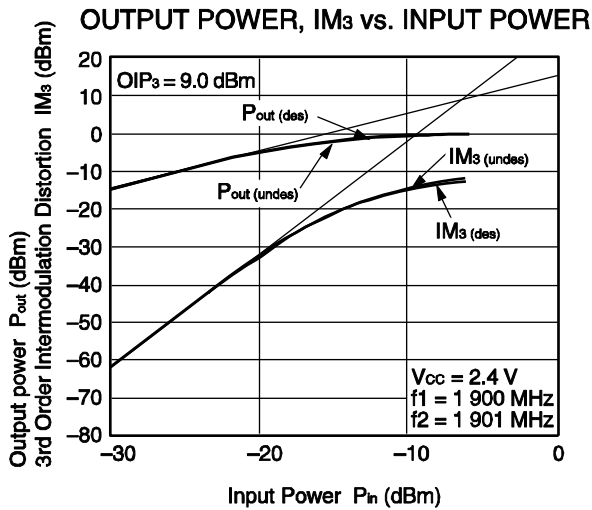
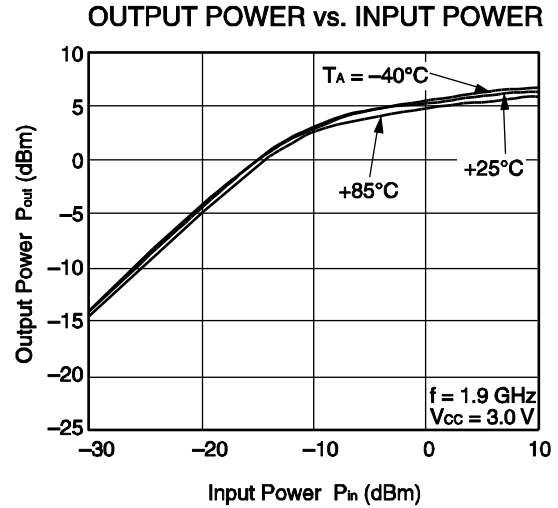
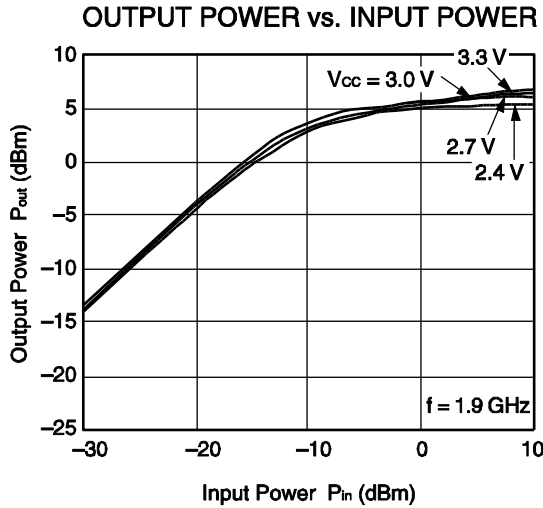


S<sub>22</sub>-FREQUENCY

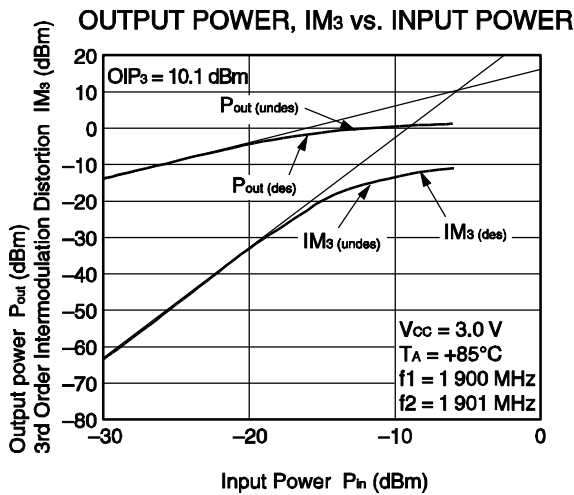
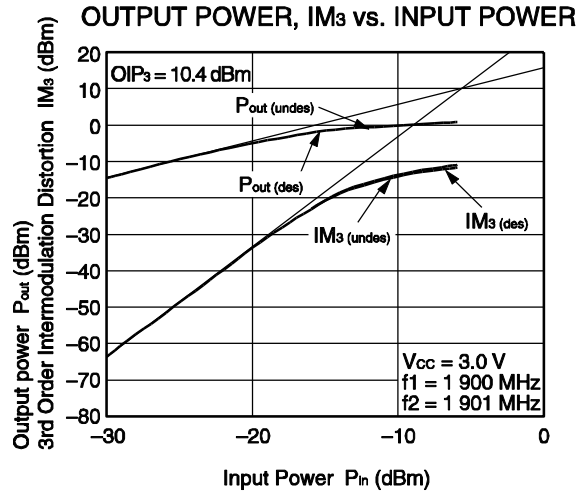
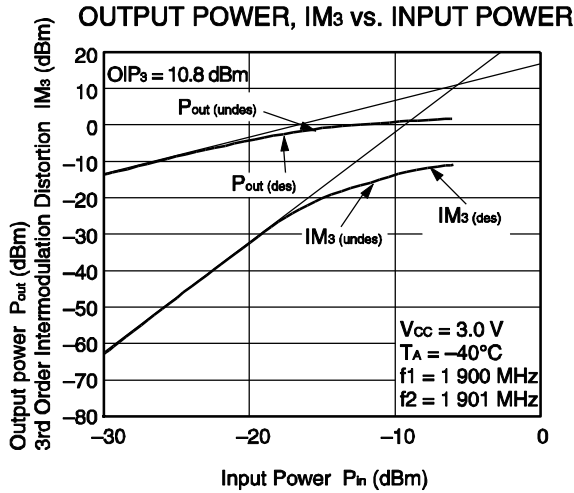


**Remark** The graphs indicate nominal characteristics.

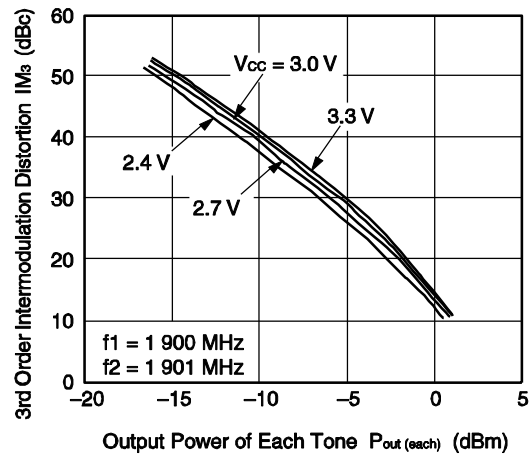




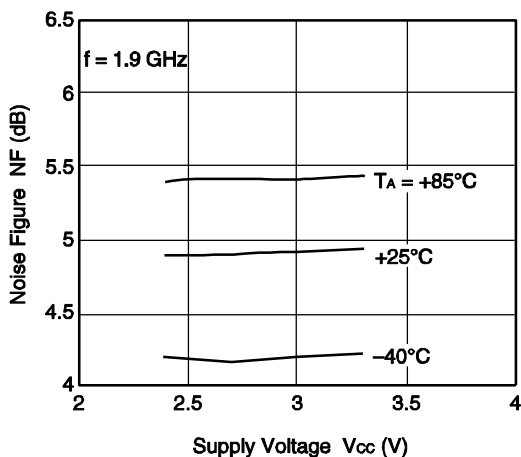
**Remark** The graphs indicate nominal characteristics.



3RD ORDER INTERMODULATION DISTORTION vs. OUTPUT POWER OF EACH TONE

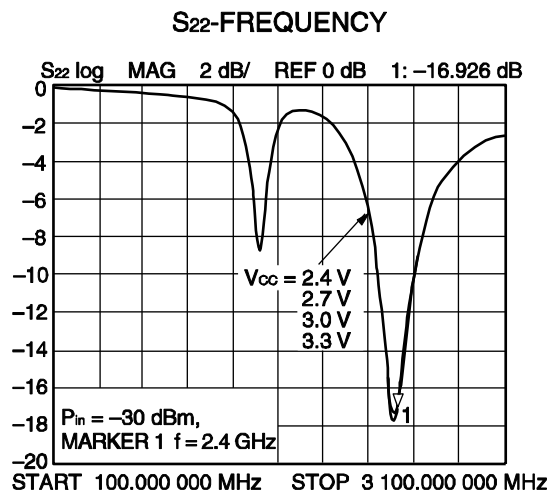
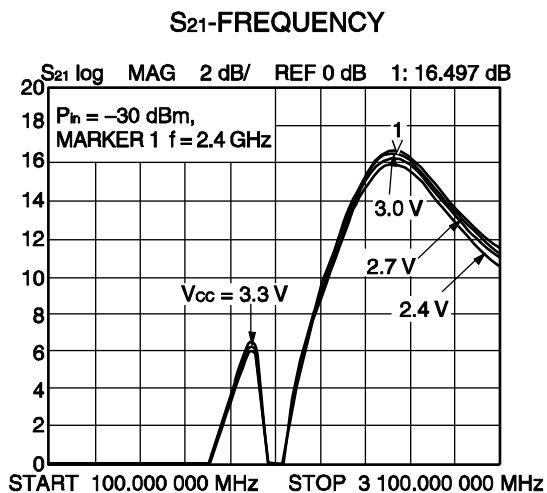
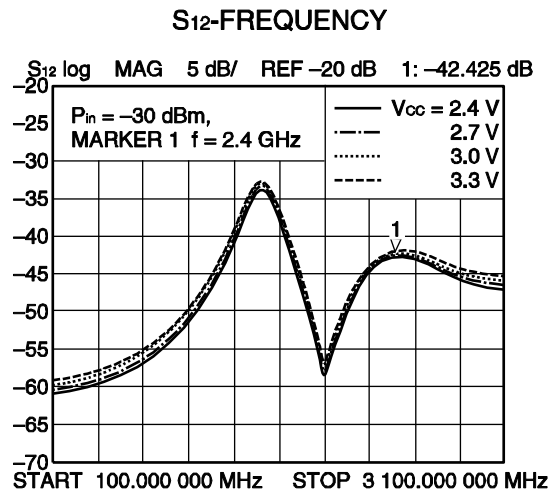
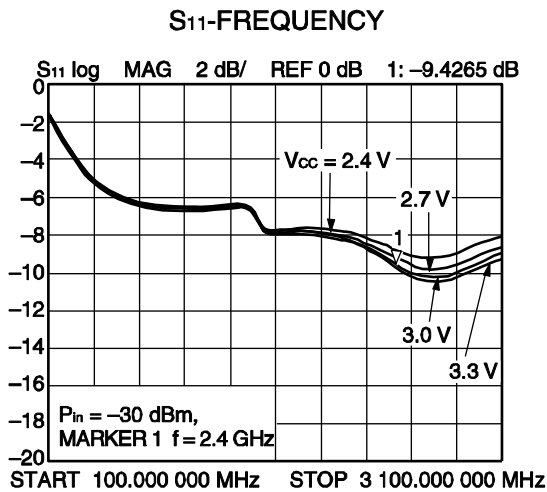
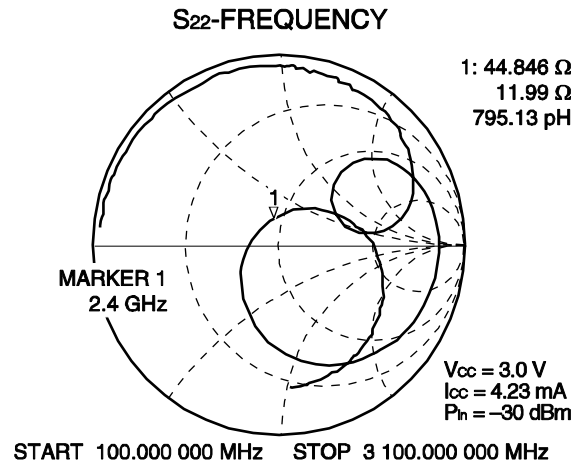
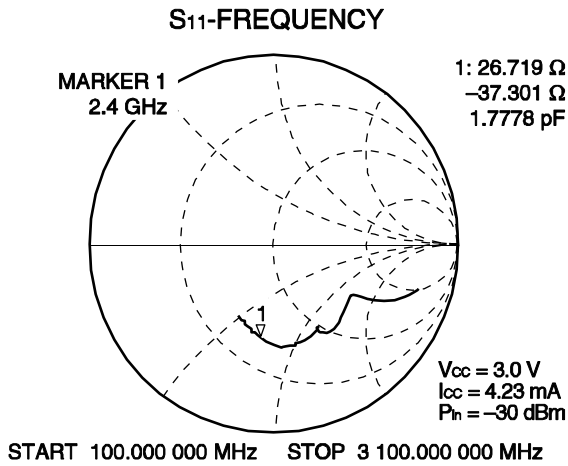


NOISE FIGURE vs. SUPPLY VOLTAGE



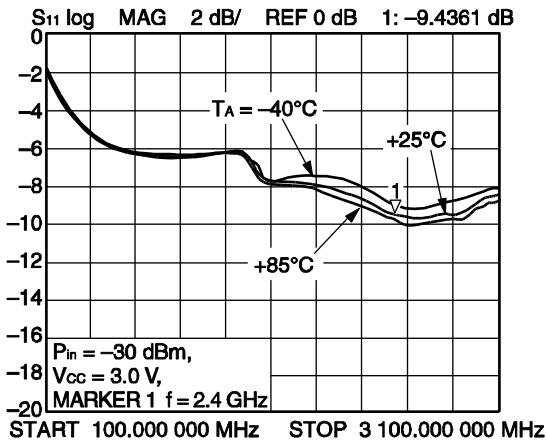
**Remark** The graphs indicate nominal characteristics.

f = 2.4 GHz MATCHING

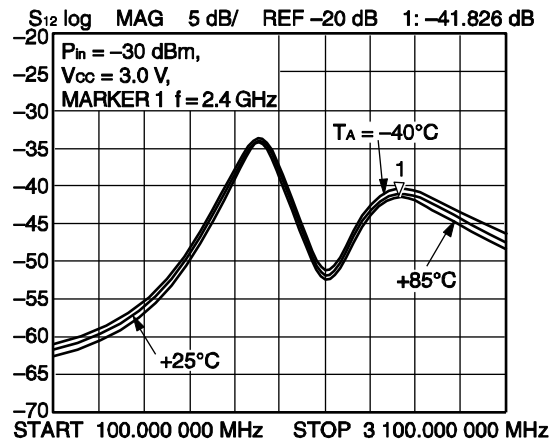


**Remark** The graphs indicate nominal characteristics.

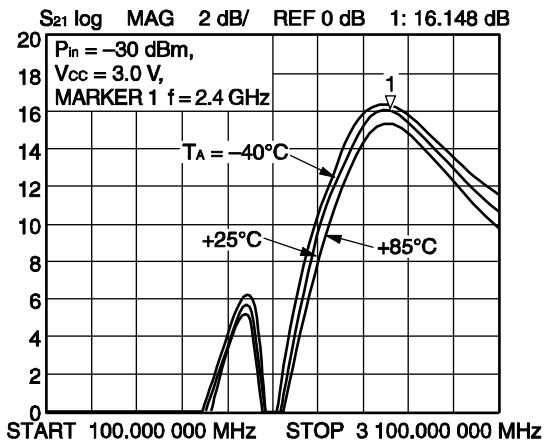
S11-FREQUENCY



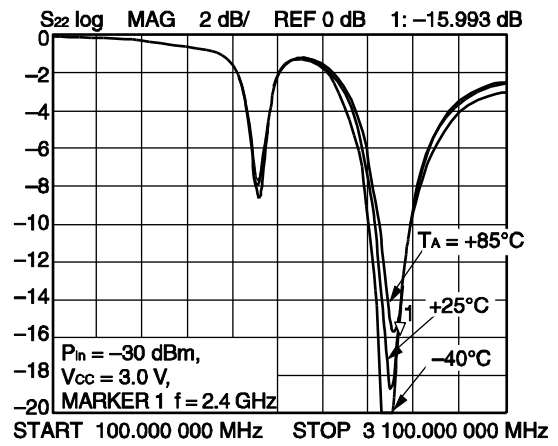
S12-FREQUENCY



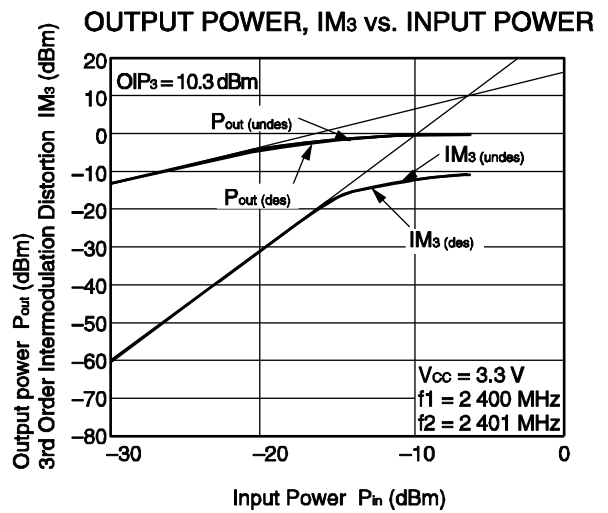
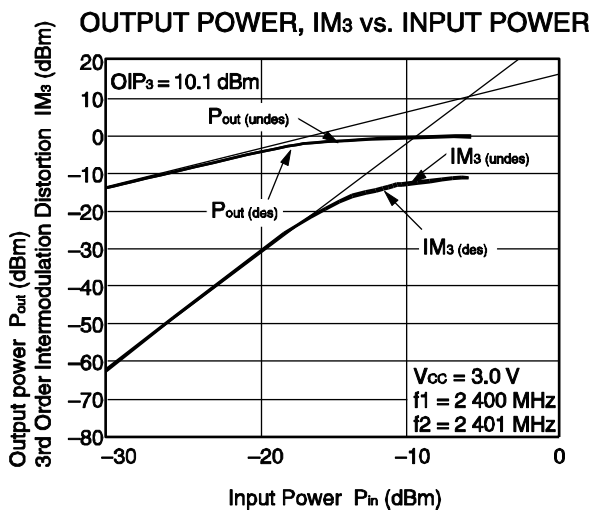
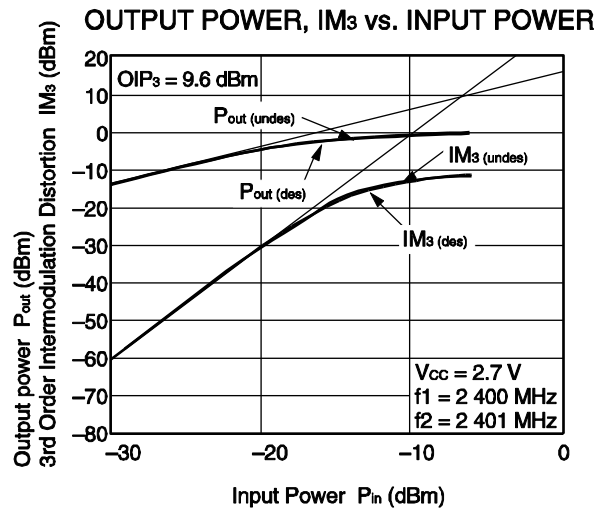
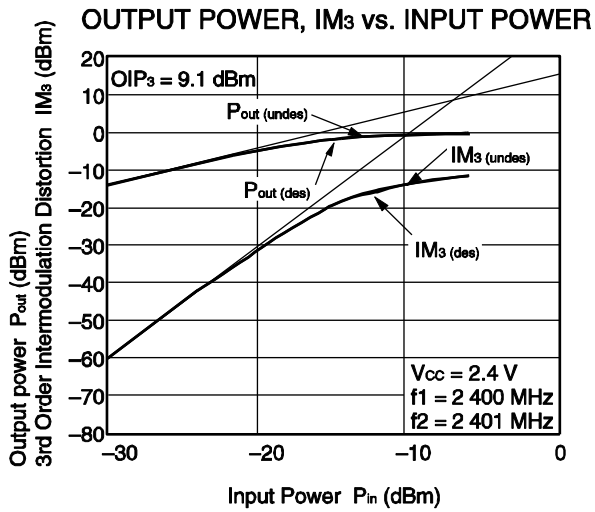
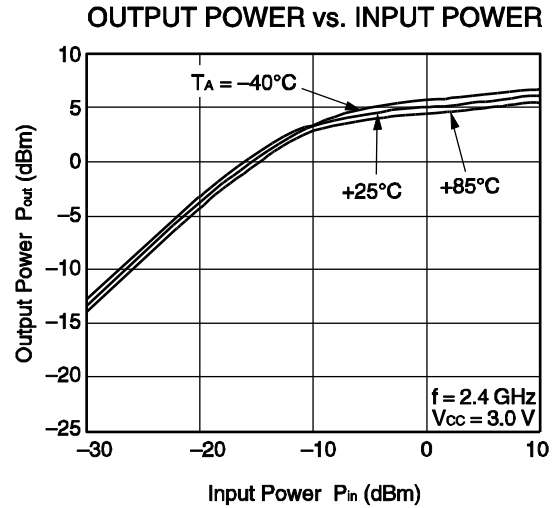
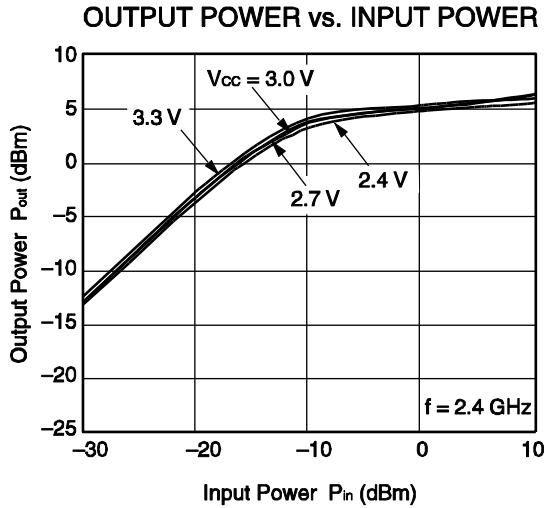
S21-FREQUENCY



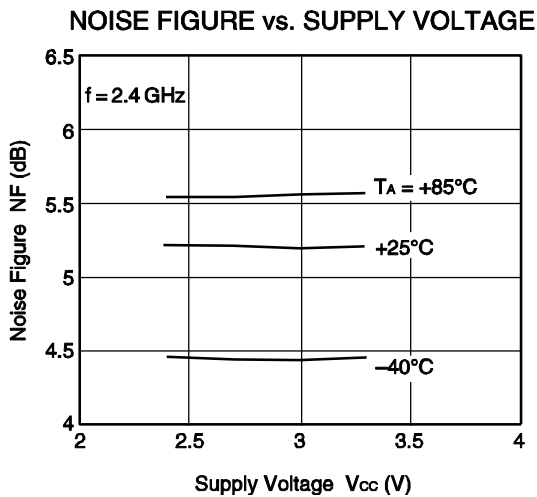
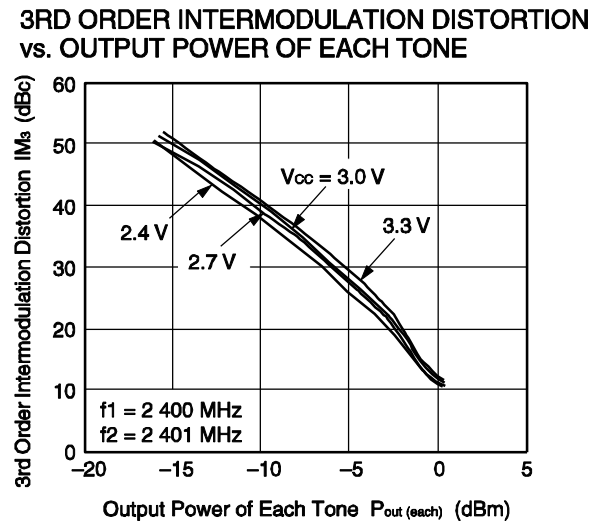
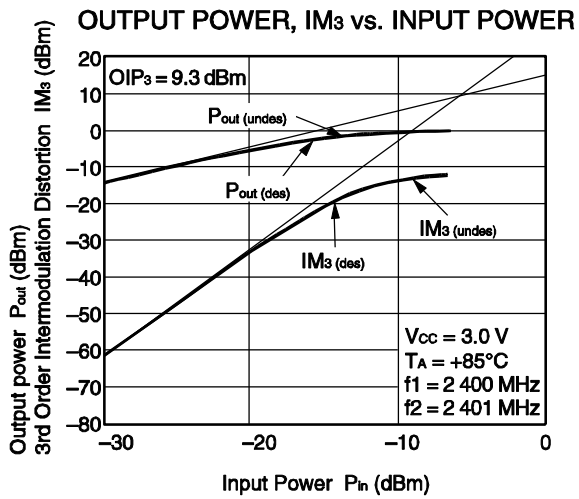
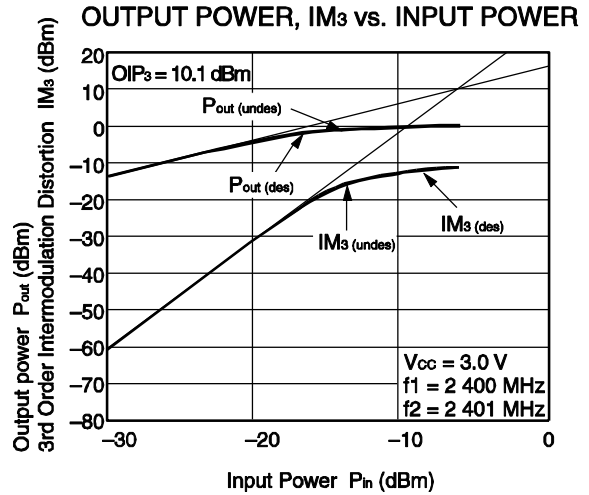
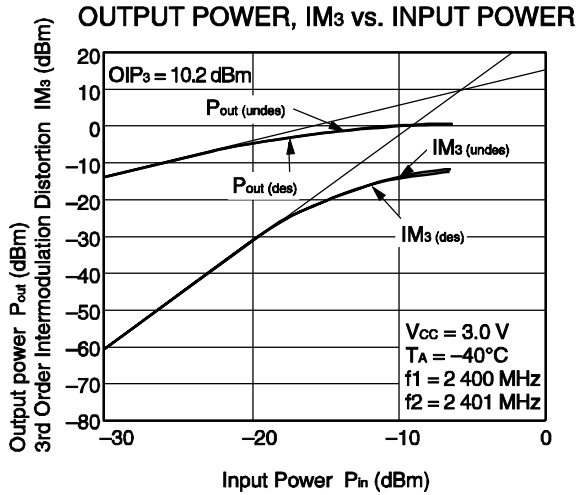
S22-FREQUENCY



Remark The graphs indicate nominal characteristics.

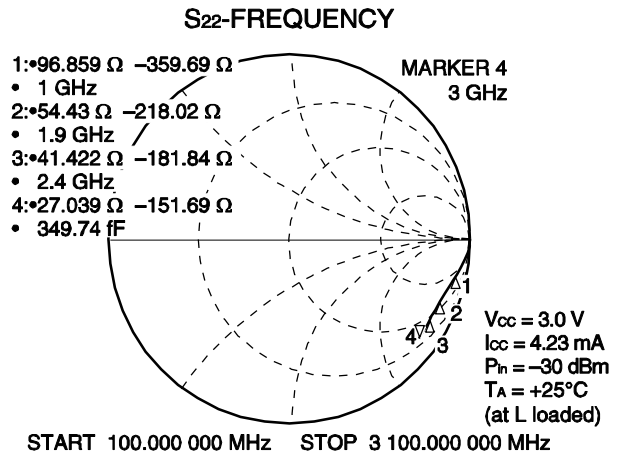
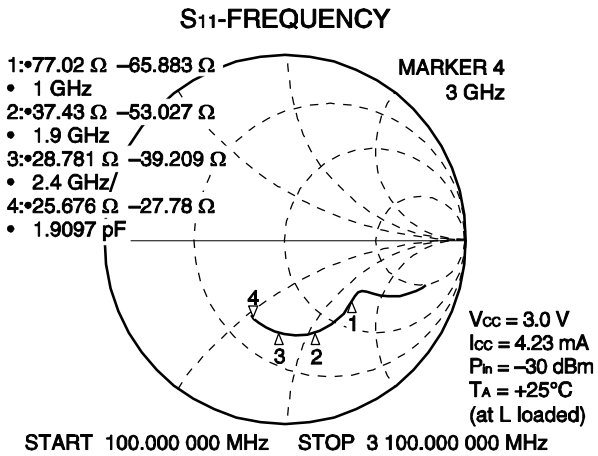


**Remark** The graphs indicate nominal characteristics.



**Remark** The graphs indicate nominal characteristics.

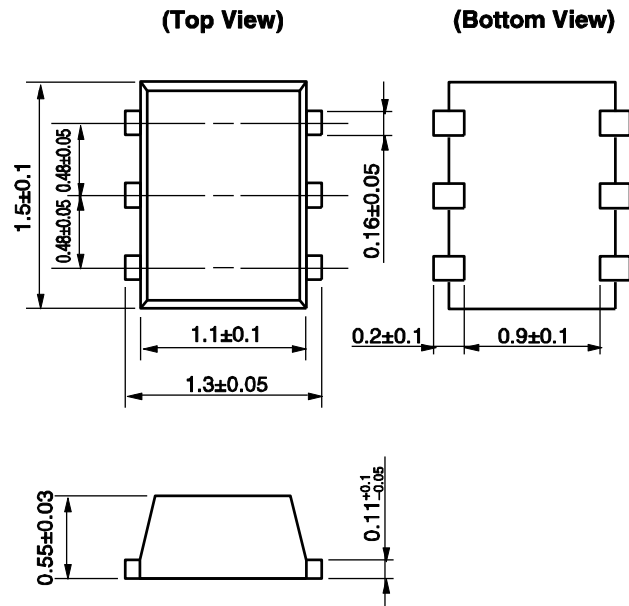
f = 3.0 GHz MATCHING



Remark The graphs indicate nominal characteristics.

PACKAGE DIMENSIONS

6-PIN LEAD-LESS MINIMOLD (1511) (UNIT: mm)





**NOTE ON CORRECT USE**

- (1) Observe precautions for handling because of electro-static sensitive devices.
- (2) Form a ground pattern as widely as possible to minimize ground impedance (to prevent undesired oscillation). All the ground pins must be connected together with wide ground pattern to decrease impedance difference.
- (3) The bypass capacitor should be attached to V<sub>cc</sub> line.
- (4) The inductor (L) should be attached between output and V<sub>cc</sub> pins. The L and series capacitor (C) values should be adjusted for applied frequency to match impedance to next stage.
- (5) The DC capacitor must be attached to input pin.



**RECOMMENDED SOLDERING CONDITIONS**

This product should be soldered and mounted under the following recommended conditions. For soldering methods and conditions other than those recommended below, contact your nearby sales office.

| Soldering Method | Soldering Conditions  | Condition Symbol |
|------------------|---|------------------|
| Infrared Reflow  | Peak temperature (package surface temperature) : 260°C or below<br>Time at peak temperature : 10 seconds or less<br>Time at temperature of 220°C or higher : 60 seconds or less<br>Preheating time at 120 to 180°C : 120±30 seconds<br>Maximum number of reflow processes : 3 times<br>Maximum chlorine content of rosin flux (% mass) : 0.2%(Wt.) or below | IR260            |
| Wave Soldering   | Peak temperature (molten solder temperature) : 260°C or below<br>Time at peak temperature : 10 seconds or less<br>Preheating temperature (package surface temperature) : 120°C or below<br>Maximum number of flow processes : 1 time<br>Maximum chlorine content of rosin flux (% mass) : 0.2%(Wt.) or below  | WS260            |
| Partial Heating  | Peak temperature (terminal temperature) : 350°C or below<br>Soldering time (per side of device) : 3 seconds or less<br>Maximum chlorine content of rosin flux (% mass) : 0.2%(Wt.) or below   | HS350            |

**Caution Do not use different soldering methods together (except for partial heating).**



## Стандарт Электрон Связь

Мы молодая и активно развивающаяся компания в области поставок электронных компонентов. Мы поставляем электронные компоненты отечественного и импортного производства напрямую от производителей и с крупнейших складов мира.

Благодаря сотрудничеству с мировыми поставщиками мы осуществляем комплексные и плановые поставки широчайшего спектра электронных компонентов.

Собственная эффективная логистика и склад в обеспечивает надежную поставку продукции в точно указанные сроки по всей России.

Мы осуществляем техническую поддержку нашим клиентам и предпродажную проверку качества продукции. На все поставляемые продукты мы предоставляем гарантию .

Осуществляем поставки продукции под контролем ВП МО РФ на предприятия военно-промышленного комплекса России , а также работаем в рамках 275 ФЗ с открытием отдельных счетов в уполномоченном банке. Система менеджмента качества компании соответствует требованиям ГОСТ ISO 9001.

Минимальные сроки поставки, гибкие цены, неограниченный ассортимент и индивидуальный подход к клиентам являются основой для выстраивания долгосрочного и эффективного сотрудничества с предприятиями радиоэлектронной промышленности, предприятиями ВПК и научно-исследовательскими институтами России.

С нами вы становитесь еще успешнее!

### Наши контакты:

**Телефон:** +7 812 627 14 35

**Электронная почта:** [sales@st-electron.ru](mailto:sales@st-electron.ru)

**Адрес:** 198099, Санкт-Петербург,  
Промышленная ул, дом № 19, литера Н,  
помещение 100-Н Офис 331