

MAX17503 3.3V Output Evaluation Kit

Evaluates: MAX17503 in 3.3V Output-Voltage Application

General Description

The MAX17503 3.3V output evaluation kit (EV kit) provides a proven design to evaluate the MAX17503 high-voltage, high-efficiency, synchronous step-down DC-DC converter. The EV kit is preset for 3.3V output at load currents up to 2.5A and features a 450kHz switching frequency for optimum efficiency and component size. The EV kit features adjustable input undervoltage lockout, adjustable soft-start, open-drain $\overline{\text{RESET}}$ signal, and external frequency synchronization.

Ordering Information appears at end of data sheet.

Features

- Operates from a 5V to 60V Input Supply
- 3.3V Output Voltage
- Up to 2.5A Output Current
- 450kHz Switching Frequency
- Enable/UVLO Input, Resistor-Programmable UVLO Threshold
- Adjustable Soft-Start Time
- MODE Pin to Select Among PWM, PFM, or DCM Modes
- Open-Drain $\overline{\text{RESET}}$ Output
- External Frequency Synchronization
- Overcurrent and Overtemperature Protection
- Proven PCB Layout
- Fully Assembled and Tested

Component List

| DESIGNATION | QTY | DESCRIPTION |
|---------------|-----|--|
| C1 | 1 | 2.2 μ F \pm 10%, 100V X7R ceramic capacitor (1210) Murata GRM32ER72A225KA35 |
| C2 | 1 | 2.2 μ F \pm 10%, 10V X7R ceramic capacitor (0603) Murata GRM188R71A225K |
| C3 | 1 | 5600pF \pm 10%, 25V X7R ceramic capacitor (0402) Murata GRM155R71E562K |
| C4 | 1 | 47 μ F \pm 10%, 10V X7R ceramic capacitor (1210) Murata GRM32ER71A476K |
| C5 | 1 | 0.1 μ F \pm 10%, 16V X7R ceramic capacitor (0402) Murata GRM155R71C104K |
| C6 | 0 | Not installed, ceramic capacitor (0402) |
| C7 | 1 | 47 μ F, 80V aluminum electrolytic capacitor (D = 10mm) Panasonic EEEFK1K470P |
| JU1, JU2, JU3 | 3 | 3-pin headers |

| DESIGNATION | QTY | DESCRIPTION |
|-------------|-----|---|
| L1 | 1 | 6.8 μ H, 5A inductor Coilcraft MSS1048-682NL Taiyo Yuden NS10165T6R8NNA |
| R1 | 1 | 3.32M Ω \pm 1% resistor (0402) |
| R2 | 1 | 1M Ω \pm 1% resistor (0402) |
| R3 | 1 | 127k Ω \pm 1% resistor (0402) |
| R4 | 1 | 47.5k Ω \pm 1% resistor (0402) |
| R5 | 0 | 45.3k Ω \pm 1% resistor (0402) |
| R6 | 1 | 10k Ω \pm 1% resistor (0402) |
| TP1, TP2 | 2 | Test pads |
| U1 | 1 | Buck converter (20 TQFN-EP*) Maxim MAX17503ATP+ |
| — | 3 | Shunts (JU1, JU2, JU3) |
| — | 1 | PCB: MAX17503 – 3.3V Output EVKIT |

*EP = Exposed pad.

Note: C7, R1, and R2 are optional components; R1 and R2 are not needed if the EN/UVLO pin is permanently connected to VIN. The electrolytic capacitor (C7) is required only when the VIN power supply is situated far from the MAX17503-based circuit. When R5 is open, the device switches at 500kHz switching frequency.

Component Suppliers

| SUPPLIER | PHONE | WEBSITE |
|-----------------|--------------|------------------------|
| Coilcraft, Inc. | 847-639-6400 | www.coilcraft.com |
| Murata Americas | 800-241-6574 | www.murataamericas.com |
| Panasonic Corp. | 800-344-2112 | www.panasonic.com |
| Taiyo Yuden | 800-348-2496 | www.t-yuden.com |

Note: Indicate that you are using the MAX17503 when contacting these component suppliers.

Quick Start

Recommended Equipment

- MAX17503 3.3V output EV kit
- 5V to 60V, 5A DC input power supply
- Load capable of sinking 2.5A
- Digital voltmeter (DVM)

Procedure

The EV kit is fully assembled and tested. Follow the steps below to verify the board operation. **Caution: Do not turn on power supply until all connections are completed.**

- 1) Set the power supply at a voltage between 5V and 60V. Disable the power supply.
- 2) Connect the positive terminal of the power supply to the VIN PCB pad and the negative terminal to the nearest PGND PCB pad. Connect the positive terminal of the 2.5A load to the VOUT PCB pad and the negative terminal to the nearest PGND PCB pad.
- 3) Connect the DVM across the VOUT PCB pad and the nearest PGND PCB pad.
- 4) Verify that shunts are installed across pins 1-2 on jumper JU1 and pins 2-3 on jumper JU3 (see Tables 1 and 3 for details).
- 5) Select the shunt position on jumper JU2 according to the intended mode of operation (see Table 2 for details).
- 6) Turn on the DC power supply.
- 7) Enable the load.
- 8) Verify that the DVM displays 3.3V.

Detailed Description

The MAX17503 3.3V output EV kit provides a proven design to evaluate the MAX17503 high-voltage, high-efficiency, synchronous step-down DC-DC converter. The EV kit is preset for 3.3V output from 5V to 60V input at load currents up to 2.5A and features a 450kHz switching frequency for optimum efficiency and component size.

The EV kit includes an EN/UVLO PCB pad and jumper JU1 to enable the output at a desired input voltage. The SYNC PCB pad and jumper JU3 allow an external clock to synchronize the device. Jumper JU2 allows the selection of a particular mode of operation based on light-load performance requirements. An additional RESET PCB pad is available for monitoring whether the converter output is in regulation.

Soft-Start Input (SS)

The device utilizes an adjustable soft-start function to limit inrush current during startup. The soft-start time is adjusted by the value of C3, the external capacitor from SS to GND. The selected output capacitance (C_{SEL}) and the output voltage (V_{OUT}) determine the minimum value of C3, as shown by the following equation:

$$C3 \geq 28 \times 10^{-6} \times C_{SEL} \times V_{OUT}$$

The soft-start time (t_{SS}) is related to C3 by the following equation:

$$t_{SS} = C3 / (5.55 \times 10^{-6})$$

For example, to program a 1ms soft-start time, C3 should be 5.6nF.

Regulator Enable/Undervoltage-Lockout Level (EN/UVLO)

The device offers an adjustable input undervoltage-lockout level. For normal operation, a shunt should be installed across pins 1-2 on jumper JU1. To disable the output, install a shunt across pins 2-3 on JU1 and the EN/UVLO pin is pulled to GND. See Table 1 for JU1 settings.

Set the voltage at which the device turns on with the resistive voltage-divider R1/R2 connected from VIN_ to SGND. Connect the center node of the divider to EN/UVLO.

Choose R1 to be 3.32MΩ and then calculate R2 as follows:

$$R2 = \frac{R1 \times 1.215}{(V_{INU} - 1.215)}$$

where V_{INU} is the voltage at which the device is required to turn on.

MODE Selection (MODE)

The device's MODE pin can be used to select among PWM, PFM, or DCM modes of operation. The logic state of the MODE pin is latched when VCC and EN/UVLO voltages exceed the respective UVLO rising thresholds and all internal voltages are ready to allow LX switching. State

Table 1. Regulator Enable (EN/UVLO) Description (JU1)

| SHUNT POSITION | EN/UVLO PIN | MAX17503_ OUTPUT |
|----------------|--|---|
| 1-2* | Connected to VIN | Enabled |
| Not installed | Connected to the center node of resistor-divider R1 and R2 | Enabled, UVLO level set through the R1 and R2 resistors |
| 2-3 | Connected to SGND | Disabled |

*Default position.

changes on the MODE pin are ignored during normal operation. Refer to the MAX17503 IC data sheet for more information on PWM, PFM, and DCM modes of operation.

Table 2 shows EV kit jumper settings that can be used to configure the desired mode of operation.

External Clock Synchronization (SYNC)

The internal oscillator of the device can be synchronized to an external clock signal on the SYNC pin. The external synchronization clock frequency must be between 1.1f_{SW} and 1.4f_{SW}, where f_{SW} is the frequency of operation set by R5. The minimum external clock high pulse width should be greater than 50ns and the minimum external clock low pulse width should be greater than 160ns.

Table 2. MODE Description (JU2)

| SHUNT POSITION | MODE PIN | MAX17503_ MODE |
|----------------|-------------------|-----------------------|
| Not installed* | Unconnected | PFM mode of operation |
| 1-2 | Connected to SGND | PWM mode of operation |
| 2-3 | Connected to VCC | DCM mode of operation |

*Default position.

Table 3. SYNC Description (JU3)

| SHUNT POSITION | SYNC PIN | MAX17503_ SYNC |
|----------------|-------------------------------|--|
| 1-2 | Connected to test loop on PCB | Frequency can be synchronized with an external clock |
| 2-3* | Connected to SGND | SYNC feature unused |

*Default position.

EV Kit Test Report

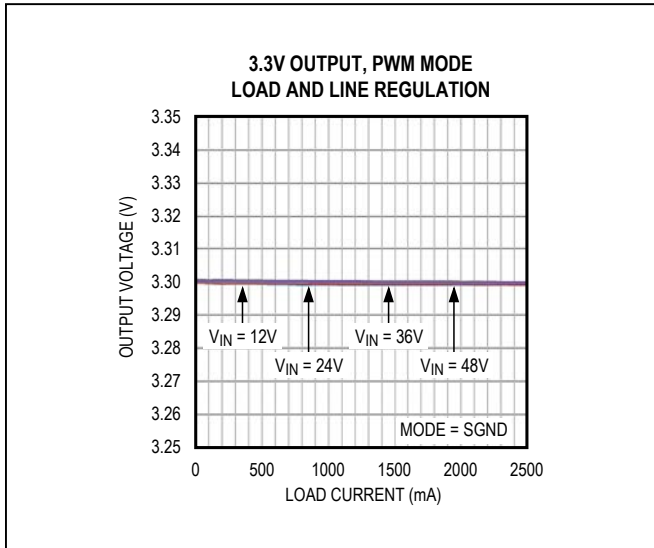


Figure 1. MAX17503 3.3V Output Load and Line Regulation (PWM Mode)

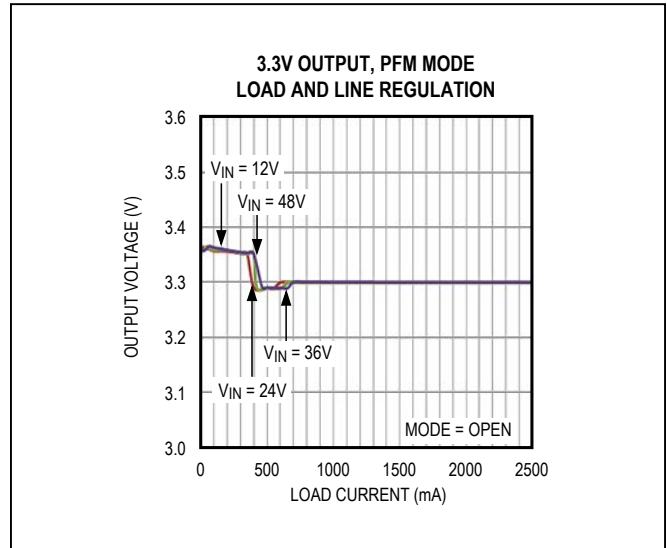


Figure 3. MAX17503 3.3V Output Load and Line Regulation (PFM Mode)

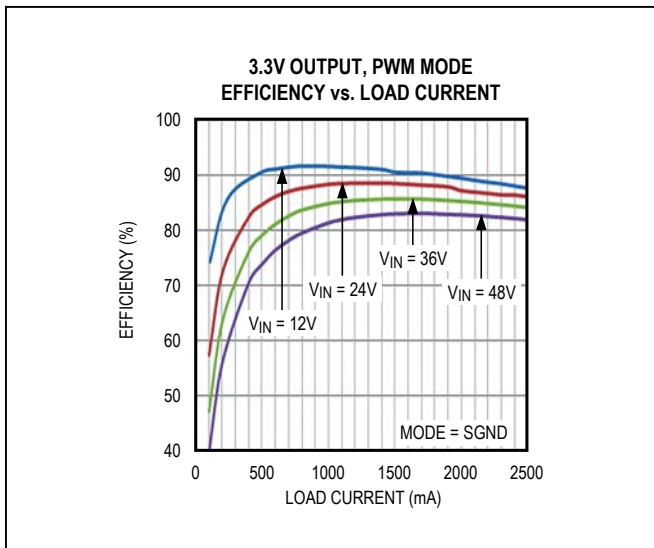


Figure 2. MAX17503 3.3V Output Efficiency (PWM Mode)

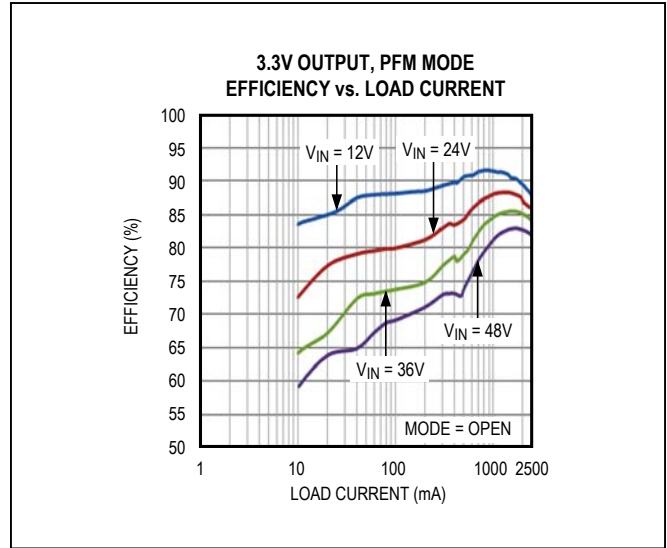


Figure 4. MAX17503 3.3V Output Efficiency (PFM Mode)

EV Kit Test Report (continued)

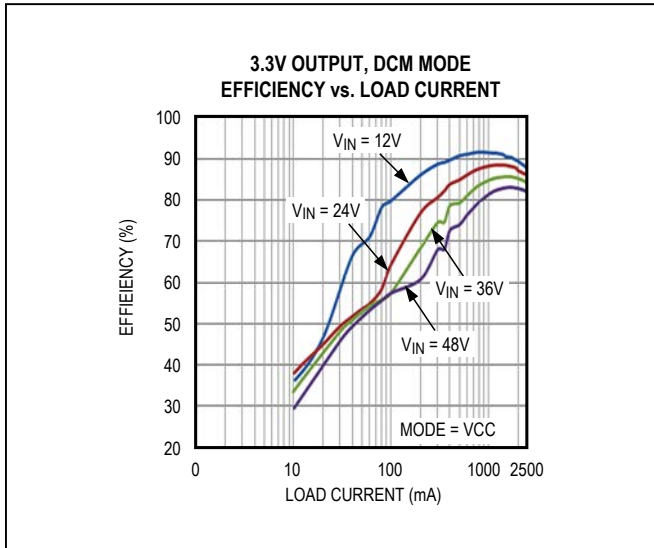


Figure 5. MAX17503 3.3V Output Efficiency (DCM Mode)

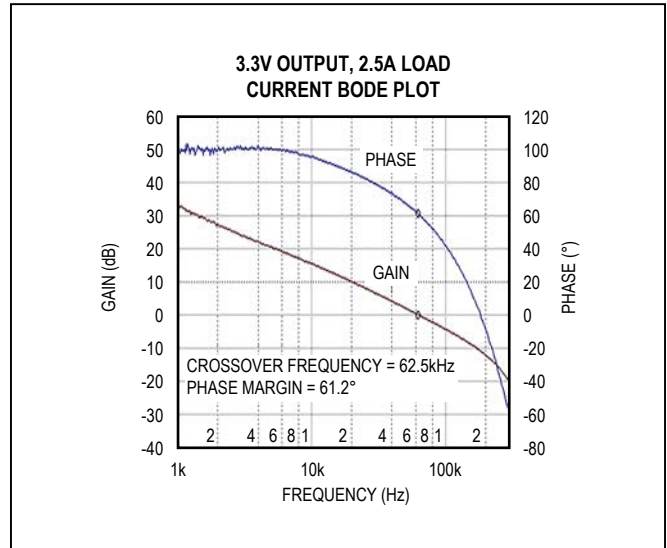


Figure 6. MAX17503 3.3V Output Full Load Bode Plot (VIN = 24V)

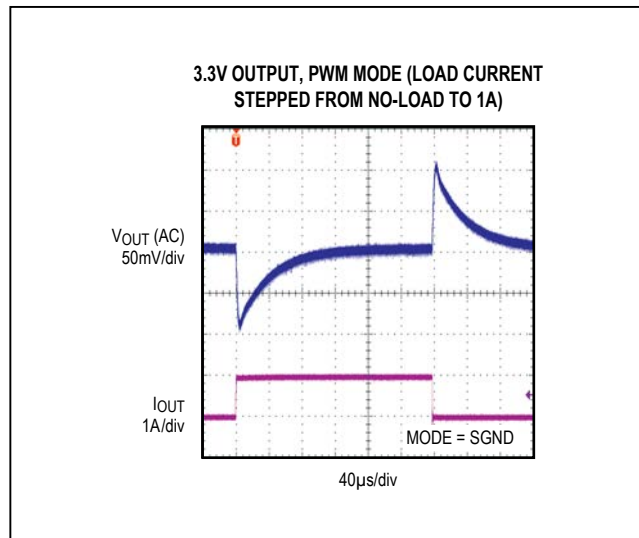


Figure 7. MAX17503 3.3V Output, No Load to 1A Load Transient (PWM Mode)

EV Kit Test Report (continued)

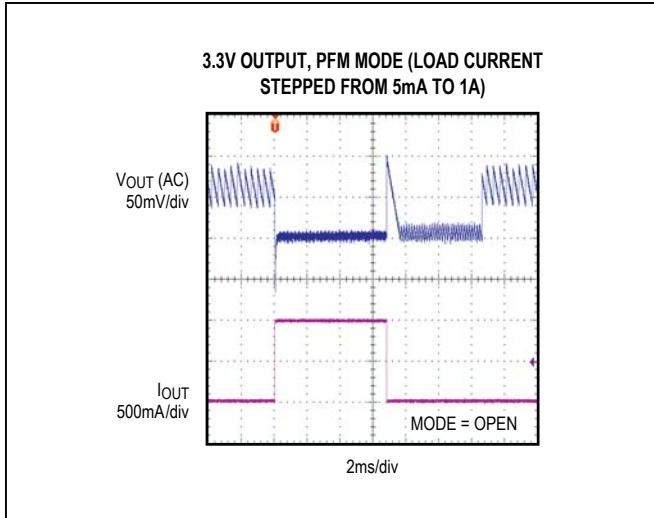


Figure 8. MAX17503 3.3V Output, 5mA to 1A Load Transient (PFM Mode)

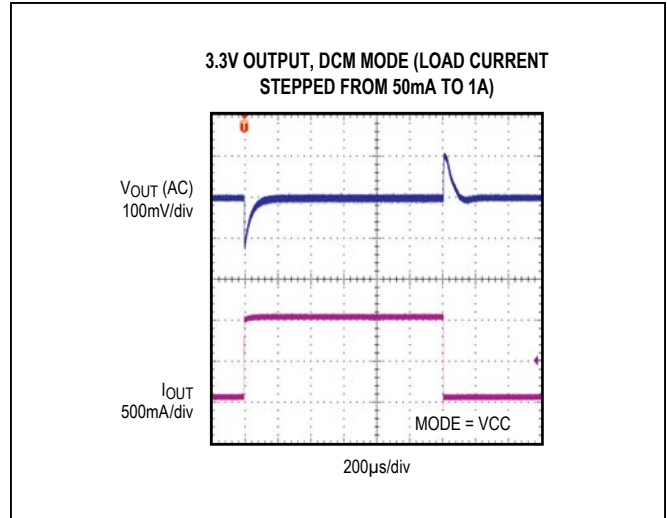


Figure 9. MAX17503 3.3V Output, 50mA to 1A Load Transient (DCM Mode)

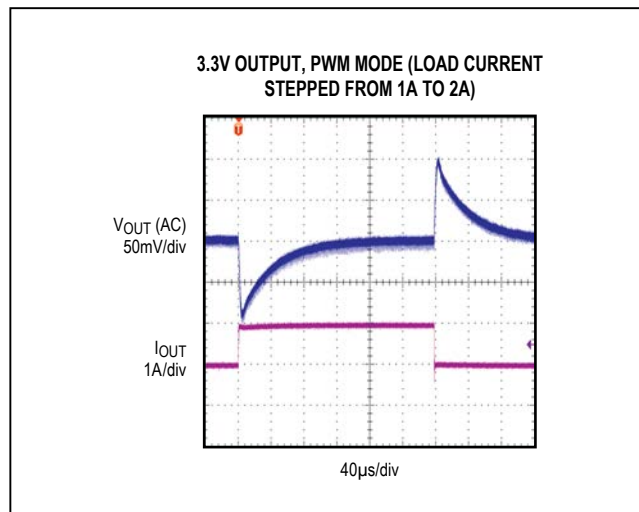


Figure 10. MAX17503 3.3V Output, 1A to 2A Load Transient

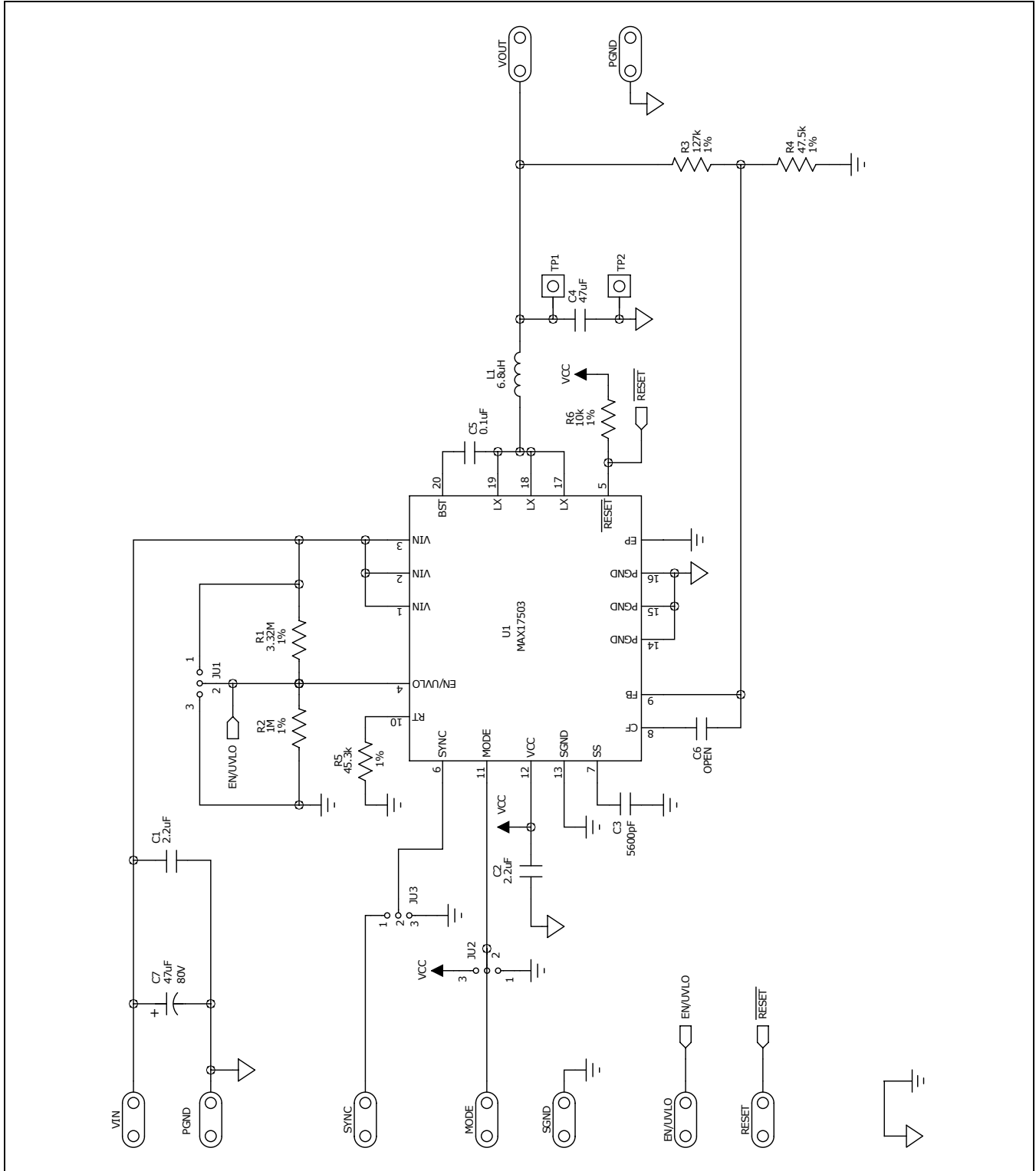


Figure 11. MAX17503 3.3V Output EV Kit Schematic

MAX17503 3.3V Output Evaluation Kit

Evaluates: MAX17503 in 3.3V Output-Voltage Application

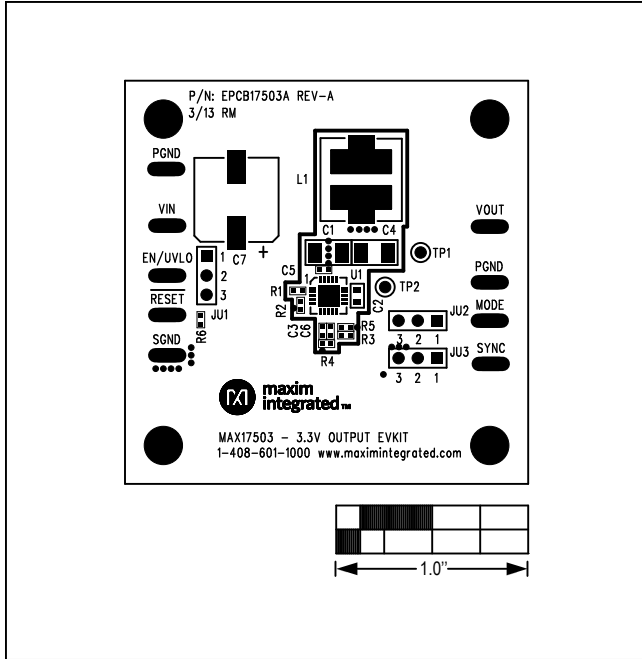


Figure 12. MAX17503 3.3V Output EV Kit Component Placement Guide—Component Side

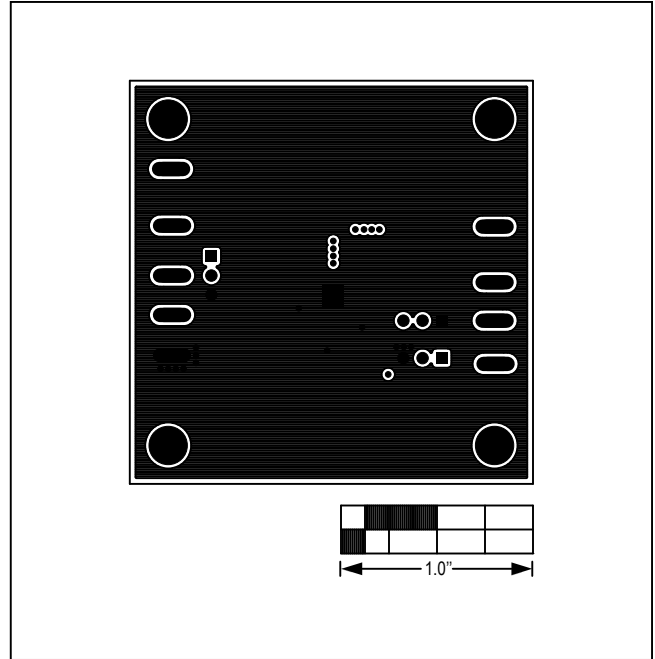


Figure 14. MAX17503 3.3V Output EV Kit PCB Layout—Inner Layer 1

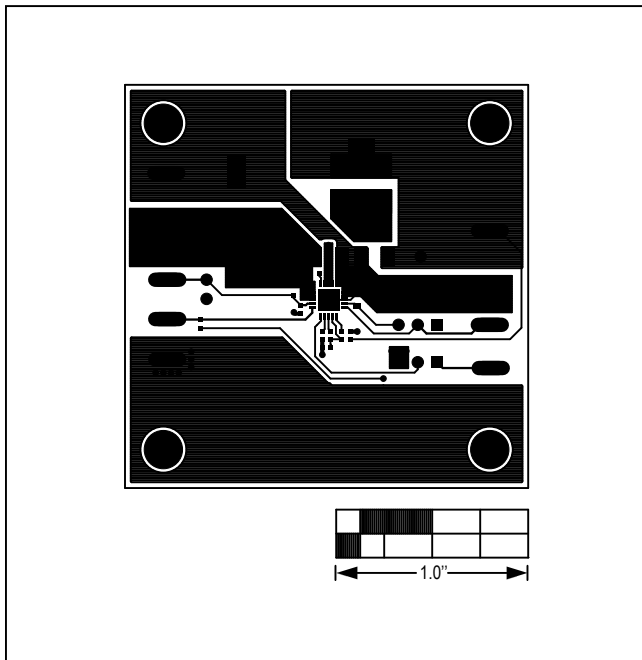


Figure 13. MAX17503 3.3V Output EV Kit Component Side PCB layout

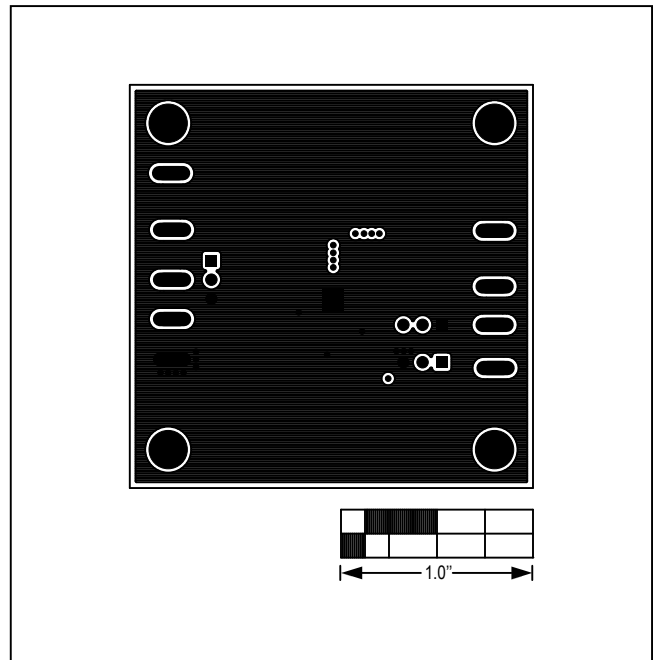


Figure 15. MAX17503 3.3V Output EV Kit PCB Layout—Inner Layer 2

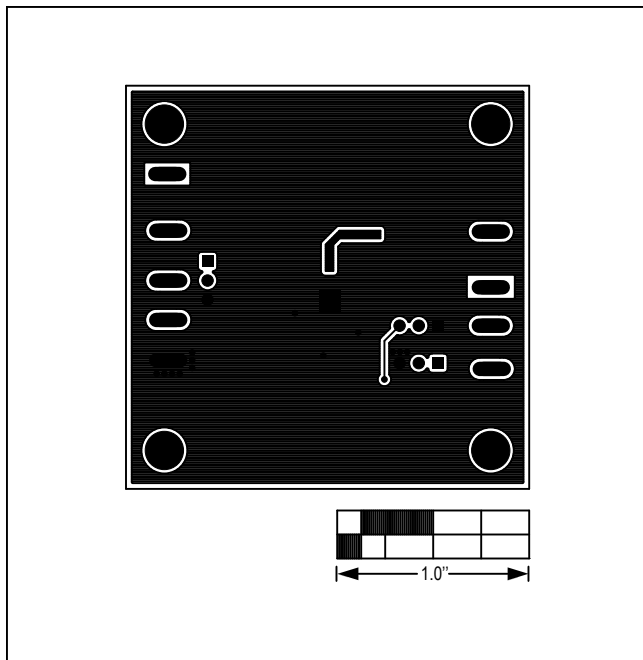


Figure 16. MAX17503 3.3V Output EV Kit PCB Layout—
Solder Side

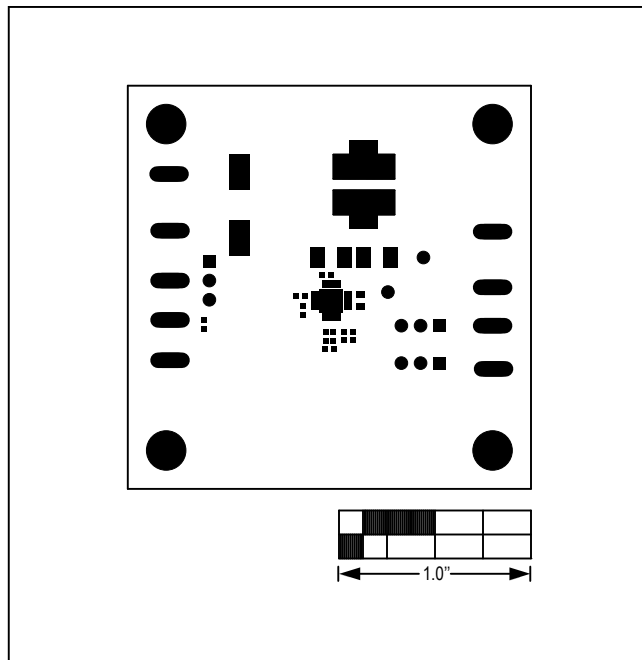


Figure 17. MAX17503 3.3V Output EV Kit Component
Placement Guide—Top Solder Mask

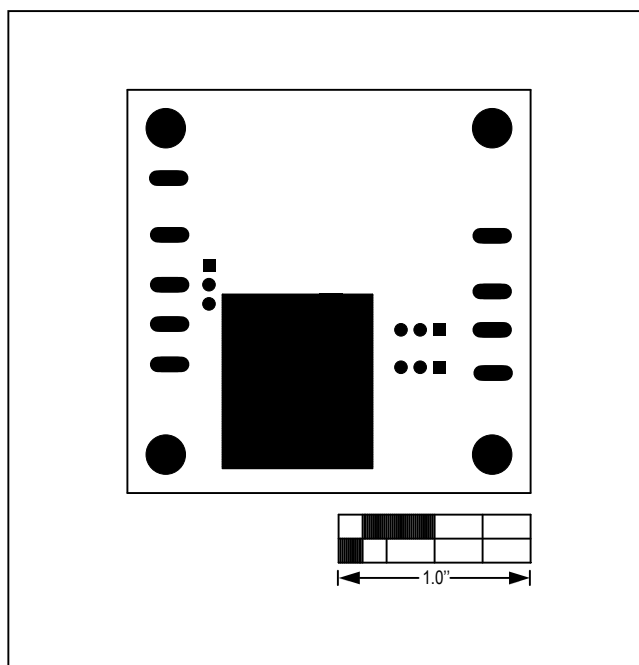


Figure 18. MAX17503 3.3V Output EV Kit Component
Placement Guide—Bottom Solder Mask

Ordering Information

| PART | TYPE |
|-----------------|--------|
| MAX17503EVKITA# | EV Kit |

#Denotes RoHS compliant.

Revision History

| REVISION NUMBER | REVISION DATE | DESCRIPTION | PAGES CHANGED |
|-----------------|---------------|-----------------|---------------|
| 0 | 9/13 | Initial release | — |

For pricing, delivery, and ordering information, please contact Maxim Direct at 1-888-629-4642, or visit Maxim Integrated's website at www.maximintegrated.com.

Maxim Integrated cannot assume responsibility for use of any circuitry other than circuitry entirely embodied in a Maxim Integrated product. No circuit patent licenses are implied. Maxim Integrated reserves the right to change the circuitry and specifications without notice at any time.



Стандарт Электрон Связь

Мы молодая и активно развивающаяся компания в области поставок электронных компонентов. Мы поставляем электронные компоненты отечественного и импортного производства напрямую от производителей и с крупнейших складов мира.

Благодаря сотрудничеству с мировыми поставщиками мы осуществляем комплексные и плановые поставки широчайшего спектра электронных компонентов.

Собственная эффективная логистика и склад в обеспечивает надежную поставку продукции в точно указанные сроки по всей России.

Мы осуществляем техническую поддержку нашим клиентам и предпродажную проверку качества продукции. На все поставляемые продукты мы предоставляем гарантию .

Осуществляем поставки продукции под контролем ВП МО РФ на предприятия военно-промышленного комплекса России , а также работаем в рамках 275 ФЗ с открытием отдельных счетов в уполномоченном банке. Система менеджмента качества компании соответствует требованиям ГОСТ ISO 9001.

Минимальные сроки поставки, гибкие цены, неограниченный ассортимент и индивидуальный подход к клиентам являются основой для выстраивания долгосрочного и эффективного сотрудничества с предприятиями радиоэлектронной промышленности, предприятиями ВПК и научно-исследовательскими институтами России.

С нами вы становитесь еще успешнее!

Наши контакты:

Телефон: +7 812 627 14 35

Электронная почта: sales@st-electron.ru

Адрес: 198099, Санкт-Петербург,
Промышленная ул, дом № 19, литера Н,
помещение 100-Н Офис 331