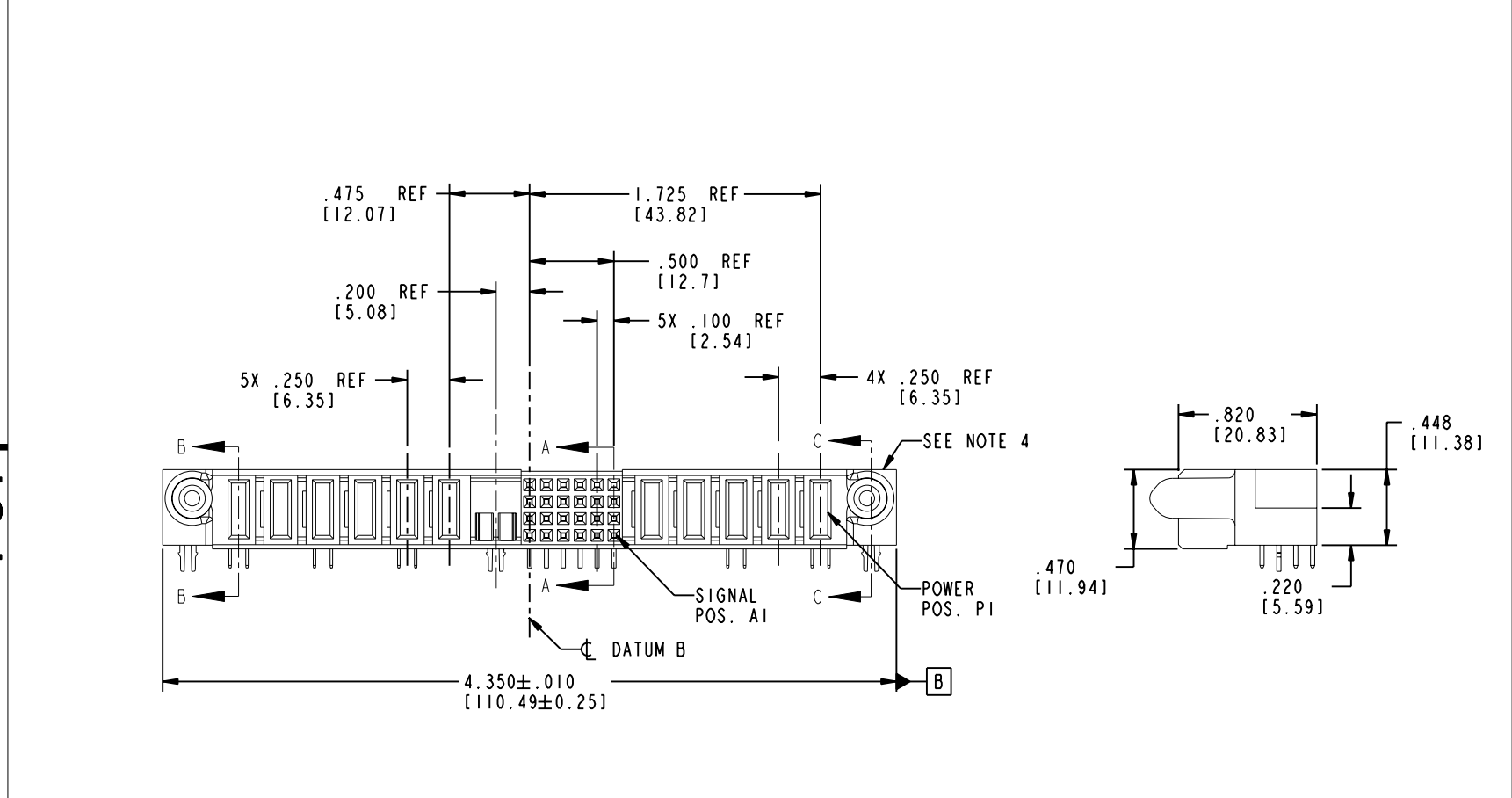
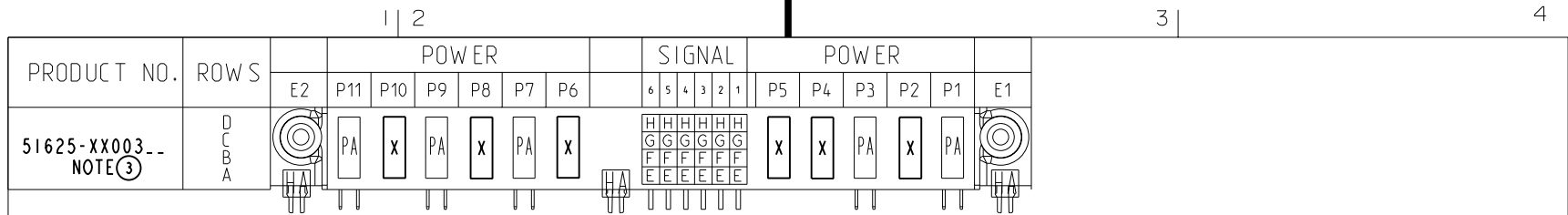


Tous droits strictement réservés. Reproduction ou communication ou des tiers interdite sous quelque forme que ce soit sans autorisation écrite du propriétaire. Propriété de c FCI. Droits de reproduction FCI.

FCI

All rights strictly reserved. Reproduction or issue to third parties in any form whenever is not permitted without written authority from the proprietor. Property of FCI. Copyright FCI.



| CODE | DIM "M" MATING LENGTH | CONTACT TYPE |
|------|-----------------------|--------------|
| HA | N/A [N/A] | HOLD-DOWN |
| PA | .042 [1.07] | POWER |
| H | N/A [N/A] | SIGNAL |
| G | N/A [N/A] | SIGNAL |
| F | N/A [N/A] | SIGNAL |
| E | N/A [N/A] | SIGNAL |
| X | OMITTED | OMITTED |

| | | | | | | | | | | | |
|-----------------------|-----------|----------------|----------|---------------------------------------|------------------------|-----------|--|-------------------------------|---|-------------------------|--------------|
| mat'l code SEE NOTE 2 | | | | tolerances unless otherwise specified | | CUSTOMER | | FCI www.fciconnect.com | | | |
| ltr | ecn no. | dr | date | linear | .XX±.01/0.X±0.3 | COPY | | projection | title 5P + 24S + 1M + 6P R/A SOLDER RECEPTACLE | | |
| A | V04-0954 | TAB | 09/30/04 | | .XXX±.005/0.XXX±0.13 | INCH/MM | | | | product family PwrBlade | code 213 |
| B | DG05-0097 | SW | 04/27/05 | | .XXX±.0020/0.XXX±0.051 | scale 1:1 | | | | size | sheet 1 of 4 |
| sheet index | | revision sheet | B 1 | B 2 | B 3 | B 4 | | | cage code 22526 | | |

Pro/E

PDM: Rev:B

STATUS: Released

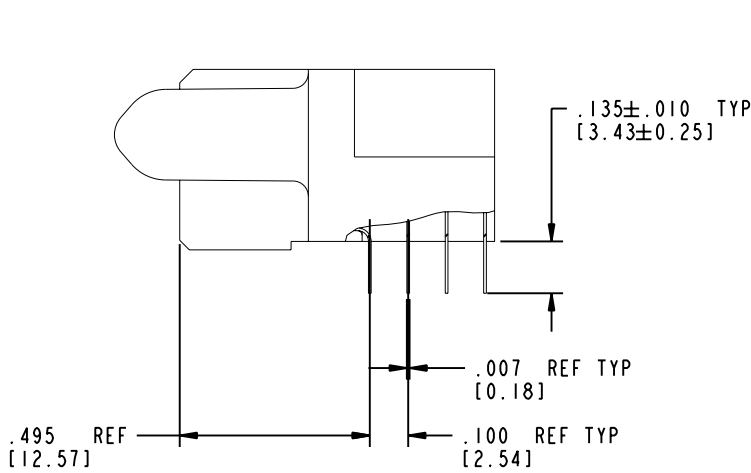
Printed: Dec 20, 2010

Tous droits strictement réservés. Reproduction ou communication a des tiers interdite sous quelque forme que ce soit sans autorisation écrite du propriétaire. Propriété de c FCI. Droits de reproduction FCI.

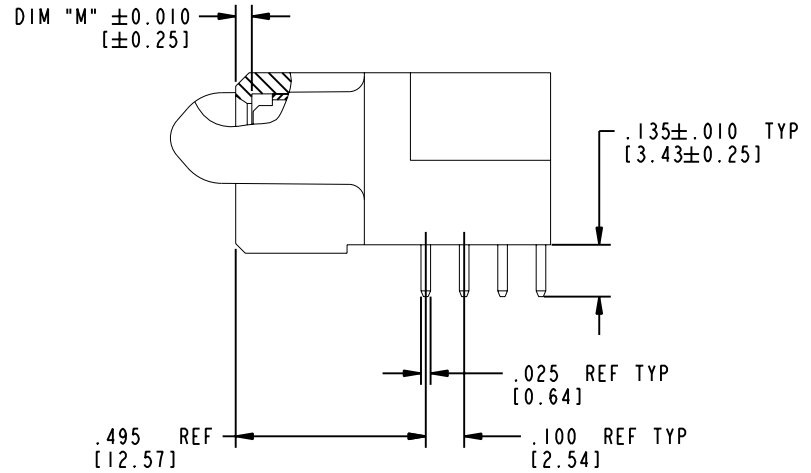
All rights strictly reserved. Reproduction or issue to third parties in any form whatever is not permitted without written authority from the proprietor. Property of FCI. Copyright FCI.

PRODUCT NUMBER

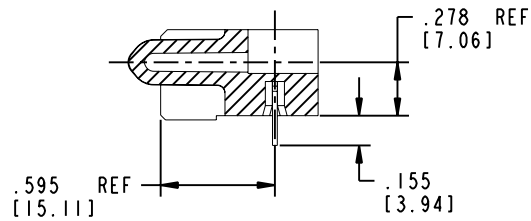
51625-XX003..
NOTE ③



BROKEN-OUT SECTION A-A
SCALE 2:1



BROKEN-OUT SECTION B-B
SCALE 2:1



SECTION C-C

| | | | | | | | | | |
|-------------|---------|----------------|------|---------------------------------------|------------------------|----------------------|--|---|--|
| mat'l code | | SEE NOTE 2 | | tolerances unless otherwise specified | | CUSTOMER | | www.fciconnect.com | |
| ltr | ecn no. | dr | date | linear | .XX±.01/0.X±0.3 | COPY | | title | |
| B | | | | projection | .XXX±.005/0.XX±0.13 | | | 5P + 24S + 1M + 6P R/A SOLDER RECEPTACLE | |
| | | | | angles | .XXX±.0020/0.XXX±0.051 | INCH/MM scale 1:1 | | product family | |
| | | | | dr | T. BRUNGARD 09/30/04 | | | PwrBlade | |
| | | | | engr | M. GRAY 09/30/04 | | | code | |
| | | | | chr | M. GRAY 09/30/04 | | | 213 | |
| | | | | appd | M. GRAY 09/30/04 | | | sheet | |
| sheet index | | revision sheet | | | | | | 2 of 4 | |

Pro/E

cage code 22526

PDM: Rev:B

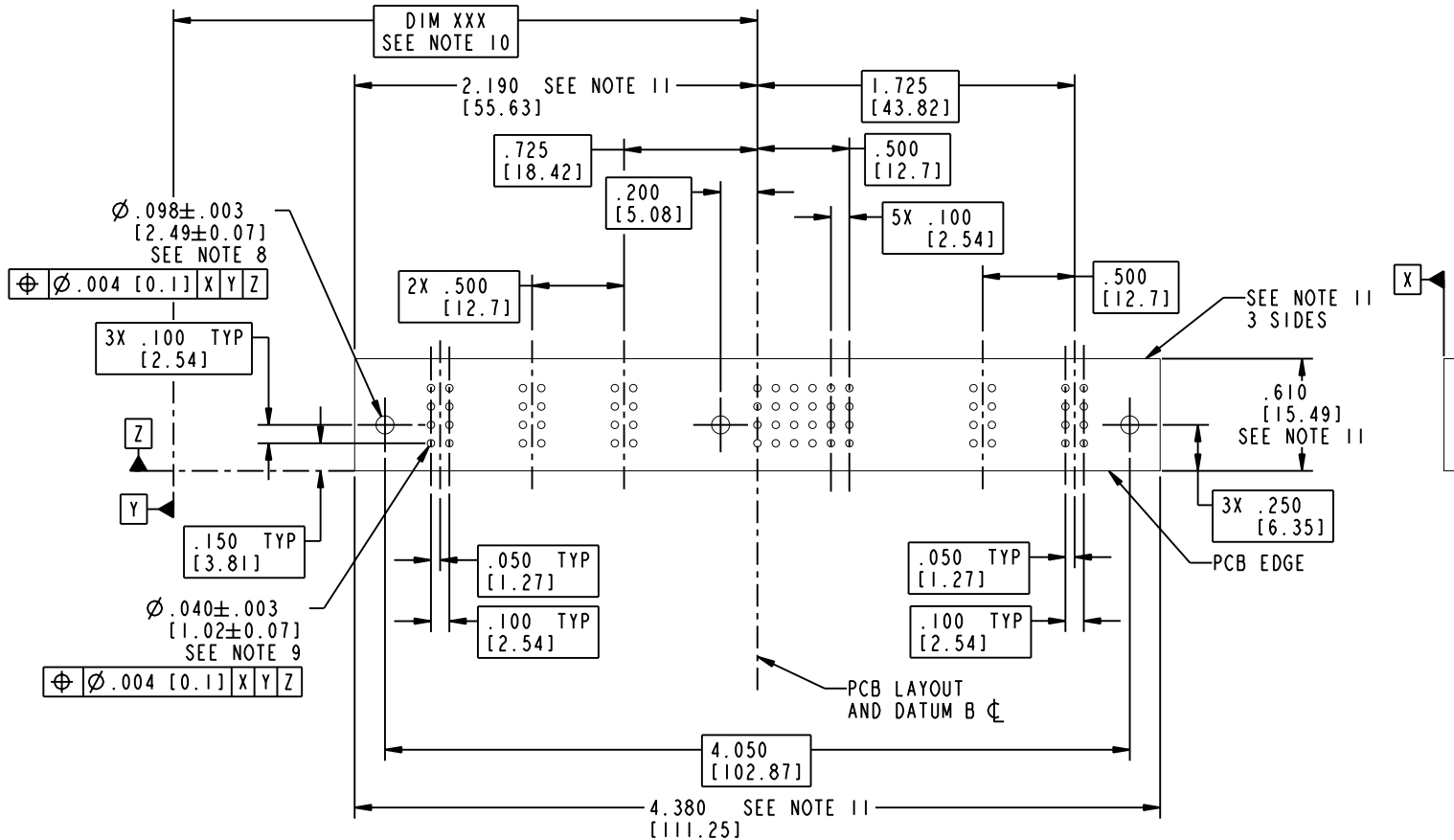
STATUS: Released


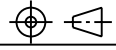

Printed: Dec 20, 2010

Tous droits strictement réservés. Reproduction ou communication o des tiers interdite sous quelque forme que ce soit sans autorisation écrite du propriétaire. Propriété de c FCI. Droits de reproduction FCI.

All rights strictly reserved. Reproduction or issue to third parties in any form whatever is not permitted without written authority from the proprietor. Property of FCI. Copyright FCI.

PRODUCT NUMBER
51625-XX003..
 NOTE ③



| | | | | | | | | | |
|-------------|---------|----------------|------|---------------------------------------|-----------------------------|---|--|---|--|
| mat'l code | | SEE NOTE 2 | | tolerances unless otherwise specified | | CUSTOMER | |  www.fciconnect.com | |
| ltr | ecn no. | dr | date | linear | .XX ± .01 / 0.X ± 0.3 | COPY | | title | |
| B | | | | projection | .XXX ± .005 / 0.XX ± 0.13 |  | | 5P + 24S + 1M + 6P R/A SOLDER RECEPTACLE | |
| | | | | angles | .XXX ± .0020 / 0.XX ± 0.051 | INCH/MM | | product family | |
| | | | | dr | T. BRUNGARD 09/30/04 |  | | PwrBlade | |
| | | | | enr | M. GRAY 09/30/04 | scale | | code | |
| | | | | chr | M. GRAY 09/30/04 | 1:1 | | 213 | |
| | | | | appd | M. GRAY 09/30/04 | | | sheet | |
| sheet index | | revision sheet | | | | | | 3 of 4 | |
| | | | | | | | | A | |

cage code **22526**

Pro/E

PDM: Rev:B

STATUS: Released

Printed: Dec 20, 2010

Tous droits strictement réservés. Reproduction ou communication a des tiers interdite sous quelque forme que ce soit sans autorisation écrite du propriétaire. Propriété de c FCI. Droits de reproduction FCI.

A
FCI

All rights strictly reserved. Reproduction or issue to third parties in any form, whenever is not permitted without written authority from the proprietor. Property of FCI. Copyright FCI.

B

PRODUCT NUMBER

51625-XX003..
NOTE ③

NOTES:

1. DIMENSIONS AND TOLERANCES ARE IN ACCORDANCE WITH ASME Y14.5M, 1994 UNLESS OTHERWISE SPECIFIED.

CONNECTOR NOTES:

② HOUSING MATERIAL: UL 94 V-0 GLASS FILLED

HIGH-TEMP THERMOPLASTIC
POWER CONTACT MATERIAL: COPPER ALLOY
SIGNAL PIN MATERIAL: COPPER ALLOY

3. PLATING:

51625-XX003 Singal Pin:30u"/0.76um Au OVER 50u"/1.27um Ni ON THE COTACT AREA.
AND 100u"/2.54um SnPb PLATING OVER 50u"/1.27um Ni ON THE TERMINATION SECTION.
Power Pin:30u"/0.76um Au OVER 50u"/1.27um Ni ON THE CONTACT AREA,
AND 100u"/2.54um SnPb PLATING OVER 50u"/1.27um Ni ON THE TERMINATION SECTION.

51625-XX003LF Singal Pin:30u"/0.76um Au OVER 50u"/1.27um Ni ON THE CONTACT AREA.
AND 78u"/2.00um Sn PLATING OVER 50u"/1.27um Ni ON THE TERMINATION SECTION.
Power Pin:30u"/0.76um Au OVER 50u"/1.27um Ni ON THE CONTACT AREA,
AND 78u"/2.00um Sn PLATING OVER 50u"/1.27um Ni ON THE TERMINATION SECTION.

PART NUMBER 51625-XX003LF MEETS EUROPEAN UNION DIRECTIVE AND OTHER COUNTRY REGULATIONS AS DESCRIBED IN GS-22-008.

THE HOUSING WILL WITHSTAND EXPOSURE TO 260° PEAK TEMPERATURE FOR 10 SECONDS IN A WAVE SOLDER APPLICATION WITH A CIRCUIT BOARD.

④ MANUFACTURER'S NAME, P/N, AND DATE CODE TO APPEAR ON THIS SURFACE.

5. PRODUCT SPECIFICATION GS-12-149.
APPLICATION SPECIFICATION BUS-20-067.

6. PACKAGED IN TRAYS.

PCB NOTES:

7. ALL HOLE DIAMETERS ARE FINISHED HOLE SIZE.

⑧ MOUNTING HOLES, WHERE APPLICABLE, ARE UNPLATED.

⑨ $\varnothing .0453 \pm .0010$ [1.151±0.025] DRILLED HOLES PLATED WITH
.0003 [0.008] MIN SnPb OVER .001 [0.03]
TO .003 [0.08] Cu PLATING TO ACHIEVE
 $\varnothing .040 \pm .003$ [1.02±.07] HOLE.

⑩ "DIM XXX" TO BE DETERMINED BY THE CUSTOMER.

⑪ CONNECTOR KEEP-OUT ZONE.

| | | | | | | | | | |
|-------------|----------------|------------|------|---------------------------------------|------------------------|----------|------------|---|--|
| mat'l code | | SEE NOTE 2 | | tolerances unless otherwise specified | | CUSTOMER | | A FCI www.fciconnect.com | |
| ltr | ecn no. | dr | date | linear | .XX±.01/0.X±0.3 | | COPY | | title 5P + 24S + 1M + 6P R/A SOLDER RECEPTACLE |
| B | | | | | .XXX±.005/0.XX±0.13 | | projection | | |
| | | | | angles | .XXX±.0020/0.XXX±0.051 | | | | product family PwrBlade code 213 |
| | | | | dr | ° ± ° | | INCH/MM | | |
| | | | | enr | T. BRUNGARD 09/30/04 | | scale | | size 51625-XX003 sheet 4 of 4 |
| | | | | chr | M. GRAY 09/30/04 | | 1:1 | | |
| | | | | appd | M. GRAY 09/30/04 | | | | |
| sheet index | revision sheet | | | | | | | | |

Pro/E

cage code **22526**

PDM: Rev:B

STATUS: **Released**

Printed: Dec 20, 2010



Стандарт Электрон Связь

Мы молодая и активно развивающаяся компания в области поставок электронных компонентов. Мы поставляем электронные компоненты отечественного и импортного производства напрямую от производителей и с крупнейших складов мира.

Благодаря сотрудничеству с мировыми поставщиками мы осуществляем комплексные и плановые поставки широчайшего спектра электронных компонентов.

Собственная эффективная логистика и склад в обеспечивает надежную поставку продукции в точно указанные сроки по всей России.

Мы осуществляем техническую поддержку нашим клиентам и предпродажную проверку качества продукции. На все поставляемые продукты мы предоставляем гарантию .

Осуществляем поставки продукции под контролем ВП МО РФ на предприятия военно-промышленного комплекса России , а также работаем в рамках 275 ФЗ с открытием отдельных счетов в уполномоченном банке. Система менеджмента качества компании соответствует требованиям ГОСТ ISO 9001.

Минимальные сроки поставки, гибкие цены, неограниченный ассортимент и индивидуальный подход к клиентам являются основой для выстраивания долгосрочного и эффективного сотрудничества с предприятиями радиоэлектронной промышленности, предприятиями ВПК и научно-исследовательскими институтами России.

С нами вы становитесь еще успешнее!

Наши контакты:

Телефон: +7 812 627 14 35

Электронная почта: sales@st-electron.ru

Адрес: 198099, Санкт-Петербург,
Промышленная ул, дом № 19, литера Н,
помещение 100-Н Офис 331