

DESCRIPTION

Demonstration circuit 1608A features the LT[®]3745, 16-channel 50mA LED driver with buck controller and serial interface. Each channel has an individually adjustable 12-bit (4096-step) grayscale PWM dimming control and a 6-bit (64-step) dot correction current adjustment. Both dimming control and current adjustment are accessible via a 30MHz cascadable serial data interface. Individual open/short LED and overtemperature flags are sent back during status read back.

Three LT3745's are connected in series to control 16 RGB LEDs stuffed on the demo board. Each IC drives a separate color. The evaluation software installed in a host computer

communicates with the DC1608A via the interface board DC590B, an USB serial controller.

The LT3745 data sheet gives a complete description of the part, its operation and application information. The datasheet must be read in conjunction with this quick start guide for working on or modifying the demo circuit 1608A.

Design files for this circuit board are available at <http://www.linear.com/demo>

LT, LT, LTC, LTM, Linear Technology and the Linear logo are registered trademarks and QuikEval is a trademark of Linear Technology Corporation. All other trademarks are the property of their respective owners.

PERFORMANCE SUMMARY Specifications are at T_A = 25°C.

SYMBOL	PARAMETER	CONDITIONS	MIN	TYP	MAX	UNITS
V _{IN}	Input Supply Range		9		40	V
V _{OUT-R}	Precharge Voltage (Red)			3.4		V
V _{OUT-G}	Precharge Voltage (Green)			4.2		V
V _{OUT-B}	Precharge Voltage (Blue)			4.2		V
f _S	Free-Running Switching Frequency			400		kHz

DEMO MANUAL DC1608A

QUICK START PROCEDURE

Demonstration circuit 1608A is easy to set up to evaluate the performance of the LT3745. Refer to Figure 1 for proper measurement equipment setup and follow the procedure below:

1. Install the QuikEval™ System software on the host computer. The software can be downloaded from http://www.linear.com/designtools/software/quik_eval.jsp
2. Install Microsoft .NET framework. The software can be downloaded from <http://www.microsoft.com/.NET/>
3. Copy LT3745Release folder to the host computer. Run vcredist_x86.exe. You may need to restart the computer.

4. Place jumpers in the following positions:

JP1 On

JP2 TO PWMCK

5. Connect the demo board to DC590B as shown in Figure 1.
6. With power off, connect the input power supply to V_{IN} and GND.
7. Apply 9V to 40V to DC1608A input.
8. Run LTcolorLEDarray.exe in the LT3745Release folder.
9. The initial start-up screen appears, at this point, none of the LEDs should light up. Proceed with board evaluation.

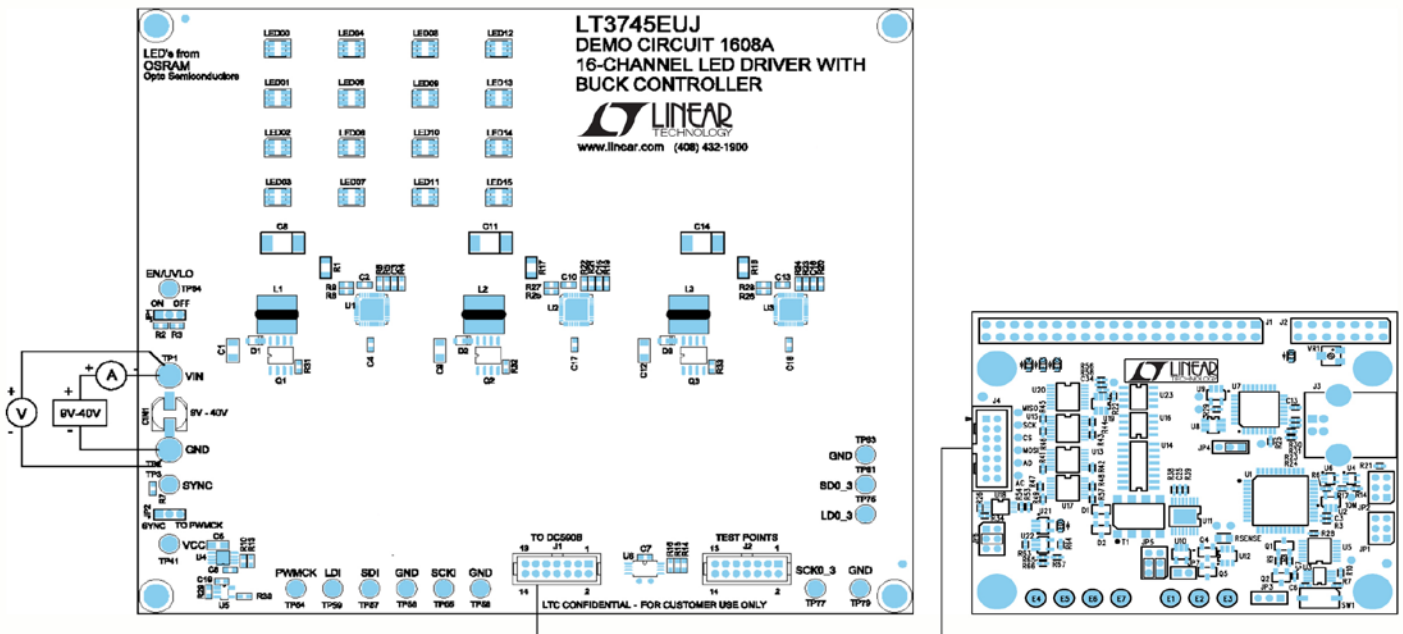


Figure 1. Proper Measurement Equipment Setup

OPERATING THE CONTROL SCREEN

Figure 2 is the initial start-up screen that appears when the program is launched.

1. Send Data Frame to Chip.

Double-click one of the black squares in the “LED Colors” grid. The standard color selector dialog box appears. Select a color and click “OK.” Or select the LED number in the “LED Configuration” grid, adjust the LED color by moving the sliding bars.

Click the command button labeled “Send Data Frame to Chip.” Verify that the LEDs light up in corresponding colors.

2. Play Pattern File.

Click the “Browse” button and pick the file “test”. Click the command button labeled “Play Pattern File.” Verify that all 16 RGB LEDs light up in red, green, blue and white in sequence.

Check the “Auto-Update Data/Loop File” option. Click the command button labeled “Play Pattern File.” Click the “stop” button at any time to stop.

3. Append Data Frame to Pattern File.

Create a blank text file. Click the “Browse” button and pick this new file. Create and then add the first data frame to the file by clicking the “Append Data Frame to Pattern File” button. Create the second data frame and add it to the file by clicking the “Append” button. Repeat until all the data frames are added to the file. Click the command button labeled “Play Pattern File.”

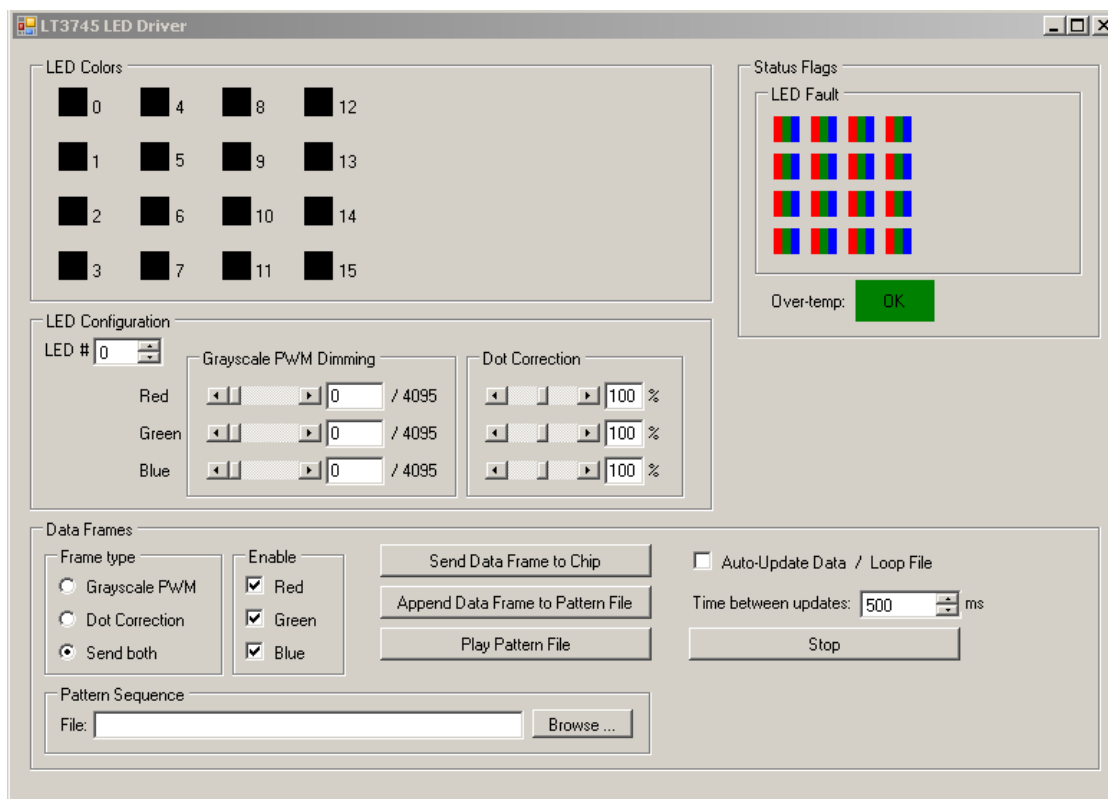


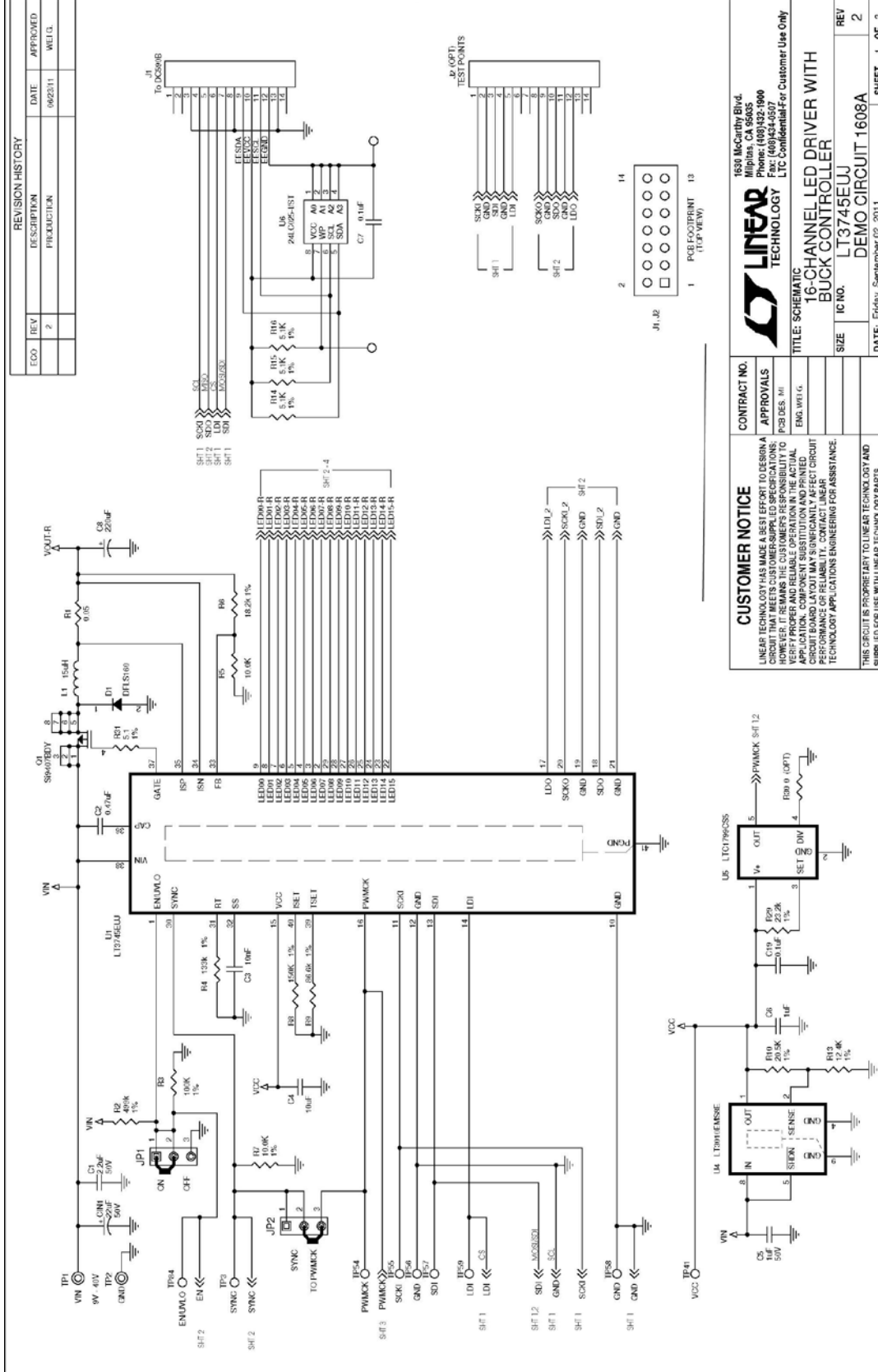
Figure 2. GUI Control Panel Start-Up Screen

DEMO MANUAL DC1608A

PARTS LIST

ITEM	QUANTITY	REFERENCE-DESCRIPTION	DESCRIPTION	MANUFACTURER'S PART NUMBER
Required Circuit Components				
1	3	C1, C9, C12	Capacitor, 1206, 2.2 μ F, 10%, 50V, X5R	Murata GRM31CR71H225KA88L
2	3	C2, C10, C13	Capacitor, 0603, 0.47 μ F, 10%, 16V, X7R	TDK C1608X7R1C474KT
3	3	C3, C15, C16	Capacitor, 0603, 10nF, 10%, 50V, X7R	AVX 06035C103KAT2A
4	3	C4, C17, C18	Capacitor, 0603, 10 μ F, 10%, 6.3V, X5R	Murata GRM188R60J106ME47D
5	1	C5	Capacitor, 0805 1 μ F, 10%, 50V, X7R	Murata GRM21BR71H105KA12L
6	1	C6	Capacitor, 0603, 1 μ F, 10%, 16V, X7R	TDK C1608X7R1C105K
7	2	C7, C19	Capacitor, 0603, 0.1 μ F, 10%, 50V, X7R	TDK C1608X7R1H104K
8	3	C8, C11, C14	Capacitor, 7343 220 μ F, 20%, 6.3V, POSCAP	SANYO POSCAP 6TPE220ML
9	3	D1, D2, D3	Diode, Rectifier, Barrier, Schottky, 1A	Diodes Inc. DFSL160
10	16	LED00-LED15	LED, Top, 6-Lead	OSRAM LRTB-G6TG
11	3	L1, L2, L3	Inductor, 15 μ H	Würth 744778115
12	3	Q1, Q2, Q3	XSTR, P-channel MOSFET	Vishay Si9407BDY
13	3	R1, R17, R18	Resistor, 1206, 0.05 Ω , 1%, 1/8W	SUSUMU RL32R-R050-F
14	1	R2	Resistor, 0603, 499k, 1%, 1/10W	Vishay CRCW0603499KFKEA
15	1	R3	Resistor, 0603, 100k, 1%, 1/10W	Vishay CRCW0603100KFKEA
16	3	R4, R19, R20	Resistor, 0603, 133k, 1%, 1/10W	Vishay CRCW0603133KFKEA
17	4	R5, R7, R21, R23	Resistor, 0603, 10k, 1%, 1/10W	Vishay CRCW060310K0FKED
18	1	R6	Resistor, 0603, 18.2k, 1%, 1/10W	Vishay CRCW060318K2FKEA
19	3	R8, R25, R26	Resistor, 0603, 150k, 1%, 1/10W	Vishay CRCW0603150KFKEA
20	3	R9, R27, R28	Resistor, 0603, 86.6k, 1%, 1/10W	Vishay CRCW060386K6FKEA
21	1	R10	Resistor, 0603, 20.5k, 1%, 1/10W	Vishay CRCW060320K5FKED
22	1	R13	Resistor, 0603, 12.4k, 1%, 1/10W	Vishay CRCW060312K4FKED
23	3	R14, R15, R16	Resistor, 0603, 5.1k, 1%, 1/10W	Vishay CRCW06035K10FKED
24	2	R22, R24	Resistor, 0603, 24.9k, 1%, 1/10W	Vishay CRCW060324K9FKED
25	1	R29	Resistor, 0603, 23.2k, 1%, 1/10W	Vishay CRCW060323K2FKED
26	3	R31, R32, R33	Resistor, 0603, 5.1 Ω , 1%, 1/10W	Vishay CRCW06035R10FNEA
27	3	U1, U2, U3	IC, 16-Channel LED Driver	Linear Technology LT3745EUJ
28	1	U4	IC, LT3010EMS8E	Linear Technology LT3010EMS8E
29	1	U5	IC, LTC1799CS5	Linear Technology LTC1799CS5
30	1	U6	IC, 24LC025-I/ST	Microchip Tech. 24LC025-I/ST
Additional Demo Board Circuit Components				
1	1	C1N1	Capacitor, 22 μ F, 20%, 50V	Sun Elect. 50CE22BS
2	0	R30	Resistor, 0603, 0 Ω , Jumper Option	Vishay CRCW06030000Z0ED Option
Hardware				
1	2	JP1, JP2	Header, 3-Pin, 2mm	Samtec TMM-103-02-L-S
2	1	J1	Header, 2x7 2mm	Molex 87831-1420
3	0	J2	Header, 2x7 2mm Option	Molex 87831-1420 Option
4	2	TP1, TP2	Turrets	Mill-Max 2501-2-00-80-00-00-07-0
5	14	TP3, TP41, TP54-TP59, TP75, TP77, TP79, TP81, TP83, TP84	Turrets	Mill-Max 2308-2-00-80-00-00-07-0
6	2	JP1, JP2	Shunt, 2mm	Samtec 2SN-BK-G
7	4		Standoff, Snap-On	Keystone 8831

SCHEMATIC DIAGRAMS



REVISION HISTORY

ECO	REV	DESCRIPTION	DATE	APPROVED
	2	PRODUCTION	06/22/11	WEL.G.

LINEAR TECHNOLOGY
 1630 McCarty Blvd.
 Milpitas, CA 95035
 Phone: (408)328-1900
 Fax: (408)424-0507
 LTC Confidential For Customer Use Only

TITLE: SCHEMATIC
16-CHANNEL LED DRIVER WITH
BUCK CONTROLLER

IC NO. LT3745EU
 DEMO CIRCUIT 1608A

DATE: Friday, September 02, 2011
 SHEET 1 OF 3

CUSTOMER NOTICE
 LINEAR TECHNOLOGY HAS MADE A BEST EFFORT TO DESIGN A CIRCUIT THAT MEETS CUSTOMER-SUPPLIED SPECIFICATIONS. HOWEVER, IT REMAINS THE CUSTOMER'S RESPONSIBILITY TO VERIFY THE PERFORMANCE OF THE CIRCUIT IN THEIR APPLICATION. COMPONENT SUBSTITUTION AND PHYSICAL CIRCUIT BOARD LAYOUT MAY SIGNIFICANTLY AFFECT CIRCUIT PERFORMANCE OR RELIABILITY. CONTACT LINEAR TECHNOLOGY APPLICATIONS ENGINEERING FOR ASSISTANCE.

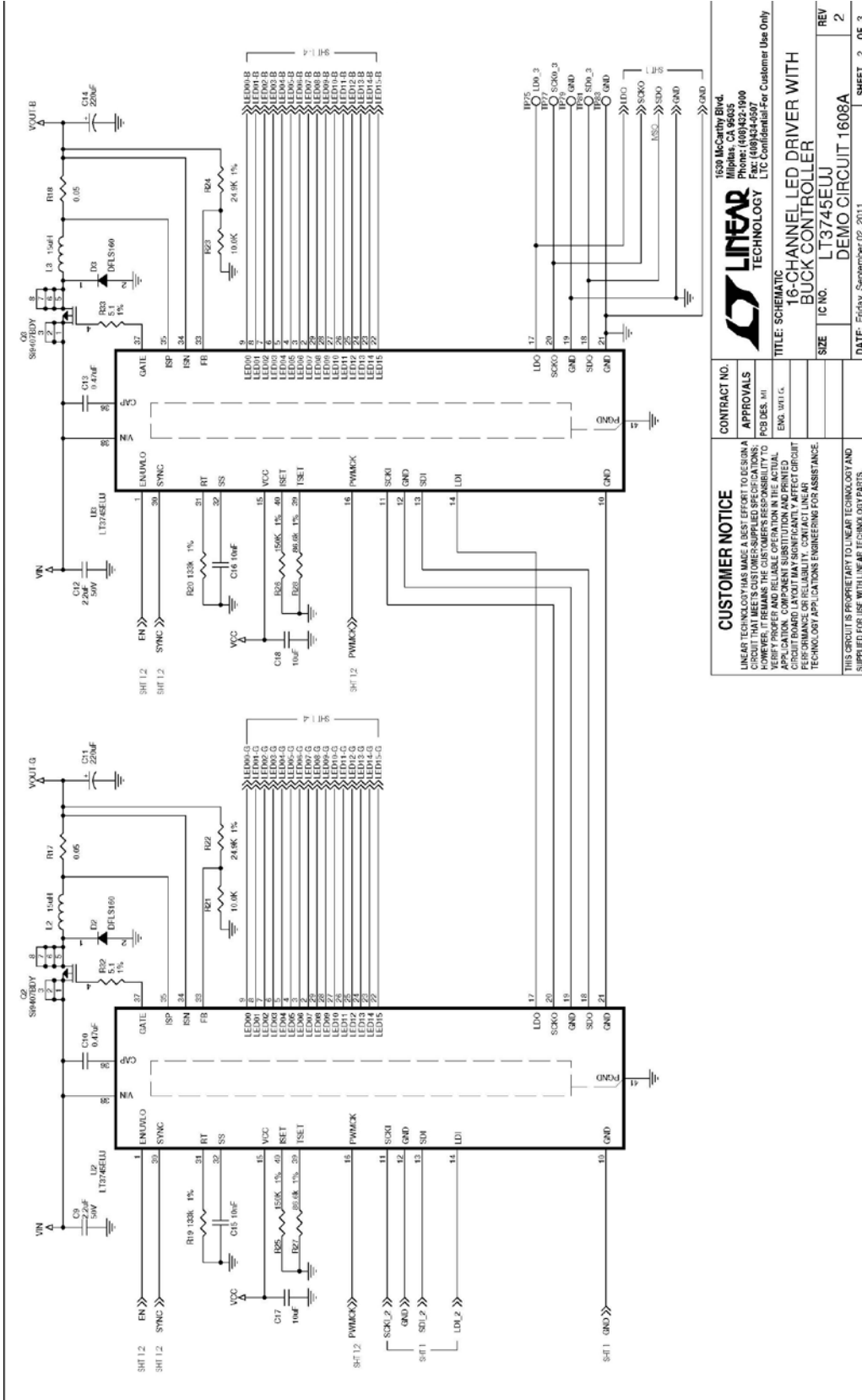
CONTRACT NO.
APPROVALS
 JOB DES. BY
 ENG. WRT. G.

THIS CIRCUIT IS PROPRIETARY TO LINEAR TECHNOLOGY AND SUPPLIED FOR USE WITH LINEAR TECHNOLOGY PARTS.



DEMO MANUAL DC1608A

SCHEMATIC DIAGRAMS



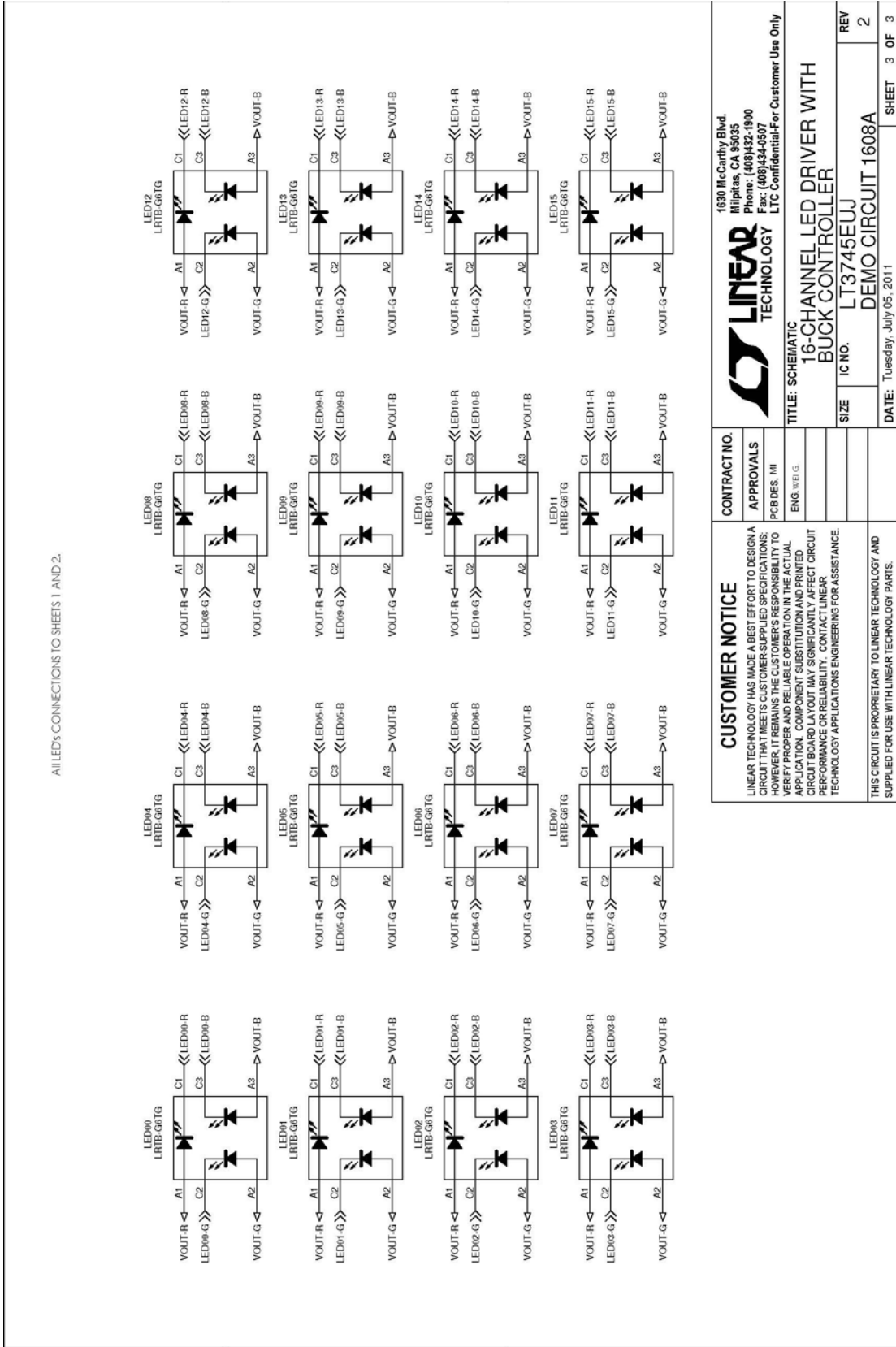
CUSTOMER NOTICE		CONTRACT NO.	
LINEAR TECHNOLOGY HAS MADE A BEST EFFORT TO DESIGN A CIRCUIT THAT MEETS CUSTOMER-SUPPLIED SPECIFICATIONS. HOWEVER, IT REMAINS THE CUSTOMER'S RESPONSIBILITY TO VERIFY THE PERFORMANCE OF THE CIRCUIT IN THEIR APPLICATION. COMPONENT SUBSTITUTION AND REWIRING OF THE CIRCUIT BOARD LAYOUT MAY SIGNIFICANTLY AFFECT CIRCUIT PERFORMANCE OR RELIABILITY. CONTACT LINEAR TECHNOLOGY APPLICATIONS ENGINEERING FOR ASSISTANCE.		APPROVALS	
		PCB DES. (M)	
		ENG. (M) (S)	
		TITLE: SCHEMATIC	
		16-CHANNEL LED DRIVER WITH BUCK CONTROLLER	
SIZE	IC NO.	REV	REV
	LT3745EU	2	2
		DEMO CIRCUIT 1608A	
		DATE: Friday, September 02, 2011	
		SHEET 2 OF 3	

1630 MacArthur Blvd.
Folsom, CA 95630
Phone: (408)432-1900
Fax: (408)434-6567
LTC Confidential For Customer Use Only



LINEAR TECHNOLOGY HAS MADE A BEST EFFORT TO DESIGN A CIRCUIT THAT MEETS CUSTOMER-SUPPLIED SPECIFICATIONS. HOWEVER, IT REMAINS THE CUSTOMER'S RESPONSIBILITY TO VERIFY THE PERFORMANCE OF THE CIRCUIT IN THEIR APPLICATION. COMPONENT SUBSTITUTION AND REWIRING OF THE CIRCUIT BOARD LAYOUT MAY SIGNIFICANTLY AFFECT CIRCUIT PERFORMANCE OR RELIABILITY. CONTACT LINEAR TECHNOLOGY APPLICATIONS ENGINEERING FOR ASSISTANCE.

SCHEMATIC DIAGRAMS



CUSTOMER NOTICE LINEAR TECHNOLOGY HAS MADE A BEST EFFORT TO DESIGN A CIRCUIT THAT MEETS CUSTOMER-SUPPLIED SPECIFICATIONS; HOWEVER, IT REMAINS THE CUSTOMER'S RESPONSIBILITY TO VERIFY PROPER AND RELIABLE OPERATION IN THE ACTUAL APPLICATION. COMPONENT SUBSTITUTION AND PRINTED CIRCUIT BOARD LAYOUT MAY SIGNIFICANTLY AFFECT CIRCUIT PERFORMANCE OR RELIABILITY. CONTACT LINEAR TECHNOLOGY APPLICATIONS ENGINEERING FOR ASSISTANCE.	CONTRACT NO.	1630 McCarthy Blvd. Milpitas, CA 95035 Phone: (408)432-1900 Fax: (408)434-0507 LTC Confidential-For Customer Use Only
	APPROVALS	LINEAR TECHNOLOGY
	ENG. DES. MI	
	PCB DES. MI	
	ENG. VED G	
	TITLE: SCHEMATIC	
	16-CHANNEL LED DRIVER WITH BUCK CONTROLLER	
	SIZE IC NO.	REV
	LT3745EUJ	2
	DATE: Tuesday, July 05, 2011	SHEET 3 OF 3
	DEMO CIRCUIT 1608A	



DEMO MANUAL DC1608A

DEMONSTRATION BOARD IMPORTANT NOTICE

Linear Technology Corporation (LTC) provides the enclosed product(s) under the following **AS IS** conditions:

This demonstration board (DEMO BOARD) kit being sold or provided by Linear Technology is intended for use for **ENGINEERING DEVELOPMENT OR EVALUATION PURPOSES ONLY** and is not provided by LTC for commercial use. As such, the DEMO BOARD herein may not be complete in terms of required design-, marketing-, and/or manufacturing-related protective considerations, including but not limited to product safety measures typically found in finished commercial goods. As a prototype, this product does not fall within the scope of the European Union directive on electromagnetic compatibility and therefore may or may not meet the technical requirements of the directive, or other regulations.

If this evaluation kit does not meet the specifications recited in the DEMO BOARD manual the kit may be returned within 30 days from the date of delivery for a full refund. THE FOREGOING WARRANTY IS THE EXCLUSIVE WARRANTY MADE BY THE SELLER TO BUYER AND IS IN LIEU OF ALL OTHER WARRANTIES, EXPRESSED, IMPLIED, OR STATUTORY, INCLUDING ANY WARRANTY OF MERCHANTABILITY OR FITNESS FOR ANY PARTICULAR PURPOSE. EXCEPT TO THE EXTENT OF THIS INDEMNITY, NEITHER PARTY SHALL BE LIABLE TO THE OTHER FOR ANY INDIRECT, SPECIAL, INCIDENTAL, OR CONSEQUENTIAL DAMAGES.

The user assumes all responsibility and liability for proper and safe handling of the goods. Further, the user releases LTC from all claims arising from the handling or use of the goods. Due to the open construction of the product, it is the user's responsibility to take any and all appropriate precautions with regard to electrostatic discharge. Also be aware that the products herein may not be regulatory compliant or agency certified (FCC, UL, CE, etc.).

No License is granted under any patent right or other intellectual property whatsoever. **LTC assumes no liability for applications assistance, customer product design, software performance, or infringement of patents or any other intellectual property rights of any kind.**

LTC currently services a variety of customers for products around the world, and therefore this transaction **is not exclusive**.

Please read the DEMO BOARD manual prior to handling the product. Persons handling this product must have electronics training and observe good laboratory practice standards. **Common sense is encouraged.**

This notice contains important safety information about temperatures and voltages. For further safety concerns, please contact a LTC application engineer.

Mailing Address:

Linear Technology
1630 McCarthy Blvd.
Milpitas, CA 95035

Copyright © 2004, Linear Technology Corporation



Стандарт Электрон Связь

Мы молодая и активно развивающаяся компания в области поставок электронных компонентов. Мы поставляем электронные компоненты отечественного и импортного производства напрямую от производителей и с крупнейших складов мира.

Благодаря сотрудничеству с мировыми поставщиками мы осуществляем комплексные и плановые поставки широчайшего спектра электронных компонентов.

Собственная эффективная логистика и склад в обеспечивает надежную поставку продукции в точно указанные сроки по всей России.

Мы осуществляем техническую поддержку нашим клиентам и предпродажную проверку качества продукции. На все поставляемые продукты мы предоставляем гарантию .

Осуществляем поставки продукции под контролем ВП МО РФ на предприятия военно-промышленного комплекса России , а также работаем в рамках 275 ФЗ с открытием отдельных счетов в уполномоченном банке. Система менеджмента качества компании соответствует требованиям ГОСТ ISO 9001.

Минимальные сроки поставки, гибкие цены, неограниченный ассортимент и индивидуальный подход к клиентам являются основой для выстраивания долгосрочного и эффективного сотрудничества с предприятиями радиоэлектронной промышленности, предприятиями ВПК и научно-исследовательскими институтами России.

С нами вы становитесь еще успешнее!

Наши контакты:

Телефон: +7 812 627 14 35

Электронная почта: sales@st-electron.ru

Адрес: 198099, Санкт-Петербург,
Промышленная ул, дом № 19, литера Н,
помещение 100-Н Офис 331