



NPN MEDIUM POWER SILICON TRANSISTOR

Qualified per MIL-PRF-19500/393

Qualified Levels:
JAN, JANTX and
JANTXV

DESCRIPTION

This family of high-frequency, epitaxial planar transistors feature low saturation voltage. These devices are also available in TO-5 and low profile U4 packages. Microsemi also offers numerous other transistor products to meet higher and lower power ratings with various switching speed requirements in both through-hole and surface-mount packages.

Important: For the latest information, visit our website <http://www.microsemi.com>.

FEATURES

- JEDEC registered 2N3418 through 2N3421 series.
- JAN, JANTX, and JANTXV qualifications are available per MIL-PRF-19500/393.
- RoHS compliant versions available (commercial grade only).
- $V_{CE(sat)} = 0.25\text{ V @ } I_C = 1\text{ A}$.
- Rise time $t_r = 0.22\ \mu\text{s max @ } I_C = 1.0\text{ A, } I_{B1} = 100\text{ mA}$.
- Fall time $t_f = 0.20\ \mu\text{s max @ } I_C = 1.0\text{ A, } I_{B2} = -10\text{ mA}$.

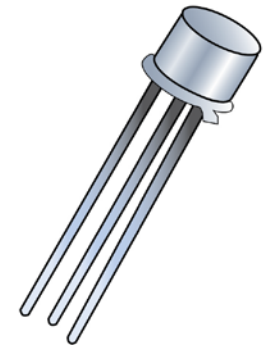
APPLICATIONS / BENEFITS

- General purpose transistors for medium power applications requiring high frequency switching and low package profile.
- Military and other high-reliability applications.

MAXIMUM RATINGS

Parameters / Test Conditions	Symbol	2N3418S 2N3420S	2N3419S 2N3421S	Unit
Collector-Emitter Voltage	V_{CEO}	60	80	V
Collector-Base Voltage	V_{CBO}	85	125	V
Emitter-Base Voltage	V_{EBO}	8		V
Collector Current $t_p \leq 1\text{ ms, duty cycle } \leq 50\%$	I_C	3 5		A
Total Power Dissipation @ $T_A = +25\text{ }^\circ\text{C}^{(1)}$ @ $T_C = +100\text{ }^\circ\text{C}^{(2)}$	P_D	1 5		W
Operating & Storage Junction Temperature Range	T_J, T_{stg}	-65 to +200		$^\circ\text{C}$


- Notes:**
1. Derate linearly 5.72 mW/ $^\circ\text{C}$ for $T_A > +25\text{ }^\circ\text{C}$.
 2. Derate linearly 150 mW/ $^\circ\text{C}$ for $T_C > +100\text{ }^\circ\text{C}$.




**TO-39 (TO-205AD)
Package**

Also available in:

TO-5 package
(lead)

 [2N3418 – 2N3421](#)

U4 package
(surface mount)

 [2N3418U4 – 2N3421U4](#)

MSC – Lawrence

6 Lake Street,
Lawrence, MA 01841
Tel: 1-800-446-1158 or
(978) 620-2600
Fax: (978) 689-0803

MSC – Ireland

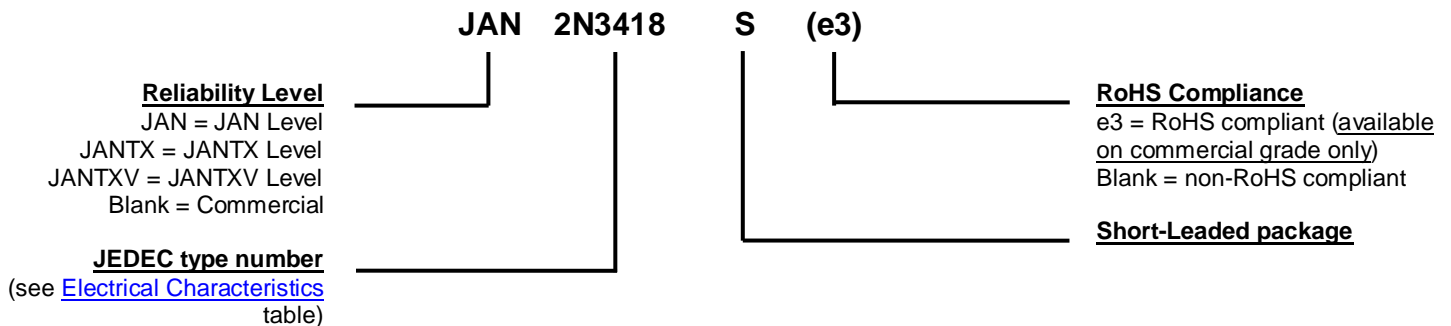
Gort Road Business Park,
Ennis, Co. Clare, Ireland
Tel: +353 (0) 65 6840044
Fax: +353 (0) 65 6822298

Website:

www.microsemi.com

MECHANICAL and PACKAGING

- CASE: Hermetically sealed, kovar base, nickel cap.
- MARKING: Part number, date code, manufacturer's ID.
- POLARITY: See [Package Dimensions](#) on last page.

PART NOMENCLATURE

SYMBOLS & DEFINITIONS

Symbol	Definition
C_{obo}	Common-base open-circuit output capacitance.
I_{CEO}	Collector cutoff current, base open.
I_{CEX}	Collector cutoff current, circuit between base and emitter.
I_{EBO}	Emitter cutoff current, collector open.
h_{FE}	Common-emitter static forward current transfer ratio.
T_A	Ambient temperature, free-air temperature.
V_{CEO}	Collector-emitter voltage, base open.
V_{CBO}	Collector-emitter voltage, emitter open.
V_{EBO}	Emitter-base voltage, collector open.

ELECTRICAL CHARACTERISTICS ($T_A = +25^\circ\text{C}$, unless otherwise noted)

OFF CHARACTERISTICS

Parameters / Test Conditions	Symbol	Min.	Max.	Unit
Collector-Emitter Breakdown Current $I_C = 50\text{ mA}$, $I_B = 0$ 2N3418S, 2N3420S 2N3419S, 2N3421S	$V_{(BR)CEO}$	60 80		V
Collector-Emitter Cutoff Current $V_{BE} = -0.5\text{ V}$, $V_{CE} = 80\text{ V}$ $V_{BE} = -0.5\text{ V}$, $V_{CE} = 120\text{ V}$ 2N3418S, 2N3420S 2N3419S, 2N3421S	I_{CEX}		0.3 0.3	μA
Collector-Base Cutoff Current $V_{CE} = 45\text{ V}$, $I_B = 0$ $V_{CE} = 60\text{ V}$, $I_B = 0$ 2N3418S, 2N3420S 2N3419S, 2N3421S	I_{CEO}		5.0 5.0	μA
Emitter-Base Cutoff Current $V_{EB} = 6.0\text{ V}$, $I_C = 0$ $V_{EB} = 8.0\text{ V}$, $I_C = 0$	I_{EBO}		0.5 10	μA

ON CHARACTERISTICS ⁽¹⁾

Parameters / Test Conditions	Symbol	Min.	Max.	Unit
Forward-Current Transfer Ratio $I_C = 100\text{ mA}$, $V_{CE} = 2.0\text{ V}$ 2N3418S, 2N3419S 2N3420S, 2N3421S	h_{FE}	20 40		
$I_C = 1.0\text{ A}$, $V_{CE} = 2.0\text{ V}$ 2N3418S, 2N3419S 2N3420S, 2N3421S		20 40	60 120	
$I_C = 2.0\text{ A}$, $V_{CE} = 2.0\text{ V}$ 2N3418S, 2N3419S 2N3420S, 2N3421S		15 30		
$I_C = 5.0\text{ A}$, $V_{CE} = 5.0\text{ V}$ 2N3418S, 2N3419S 2N3420S, 2N3421S		10 15		
Collector-Emitter Saturation Voltage $I_C = 1.0\text{ A}$, $I_B = 0.1\text{ A}$ $I_C = 2.0\text{ A}$, $I_B = 0.2\text{ A}$	$V_{CE(sat)}$		0.25 0.5	V
Base-Emitter Saturation Voltage $I_C = 1.0\text{ A}$, $I_B = 0.1\text{ A}$ $I_C = 2.0\text{ A}$, $I_B = 0.2\text{ A}$	$V_{BE(sat)}$	0.6 0.7	1.2 1.4	V

DYNAMIC CHARACTERISTICS

Parameters / Test Conditions	Symbol	Min.	Max.	Unit
Magnitude of Common Emitter Small-Signal Short Circuit Forward Current Transfer Ratio $I_C = 0.1\text{ A}$, $V_{CE} = 10\text{ V}$, $f = 20\text{ MHz}$	$ h_{fe} $	1.3	0.8	
Output Capacitance $V_{CB} = 10\text{ V}$, $I_E = 0$, $100\text{ kHz} \leq f \leq 1.0\text{ MHz}$	C_{obo}		150	pF

NOTES: (1) Pulse Test: Pulse Width = 300 μs , Duty Cycle $\leq 2.0\%$.

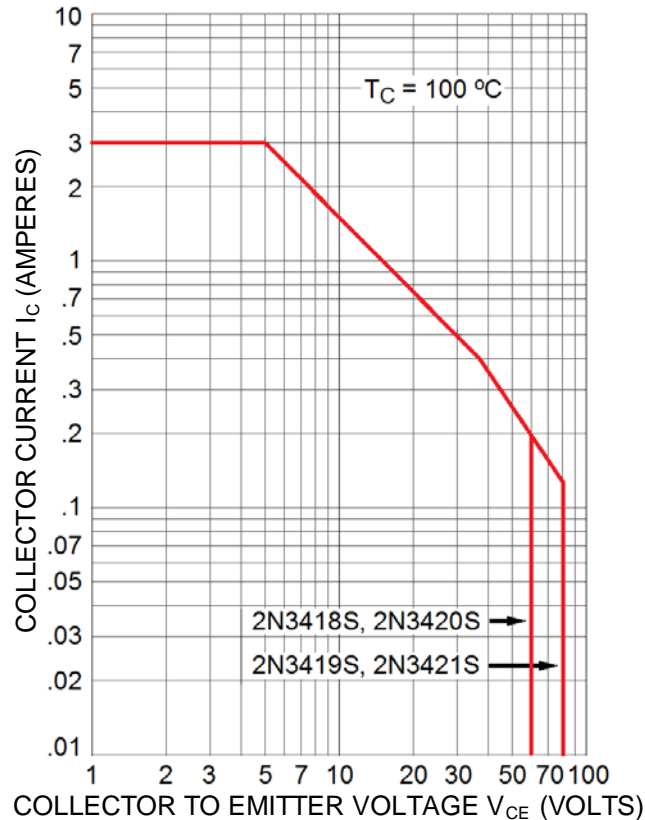
ELECTRICAL CHARACTERISTICS ($T_A = +25^\circ\text{C}$, unless otherwise noted) continued

SWITCHING CHARACTERISTICS

Parameters / Test Conditions (for all symbols)	Symbol	Min.	Max.	Unit
Delay Time Rise Time	$V_{BE(off)} = -3.7\text{ V}$, $I_C = 1.0\text{ A}$, $I_{B1} = 100\text{ mA}$	t_d t_r	0.08 0.22	μs
Storage Time Fall Time	$V_{BE(off)} = -3.7\text{ V}$, $I_C = 1.0\text{ A}$, $I_{B2} = -100\text{ mA}$	t_s t_f	1.10 0.20	μs
Turn-Off Time	$V_{BE(off)} = -3.7\text{ V}$, $I_C = 1.0\text{ A}$, $I_{B2} = -100\text{ mA}$, $R_L = 20\ \Omega$	t_{off}	1.20	μs

SAFE OPERATING AREA (See graph below and reference [MIL-STD-750, method 3053](#))

DC Test	
$T_C = +100^\circ\text{C}$, 1 cycle, $t \geq 1.0\text{ s}$	
Test 1	
$V_{CE} = 5.0\text{ V}$, $I_C = 3.0\text{ A}$	
Test 2	
$V_{CE} = 37\text{ V}$, $I_C = 0.4\text{ A}$	
Test 3	
$V_{CE} = 60\text{ V}$, $I_C = 0.185\text{ A}$	2N3418S, 2N3420S
$V_{CE} = 80\text{ V}$, $I_C = 0.12\text{ A}$	2N3419S, 2N3421S
Clamped Switching	$T_A = +25^\circ\text{C}$, $I_B = 0.5\text{ A}$, $I_C = 3.0\text{ A}$


Maximum Safe Operating Area (continuous dc)

GRAPHS

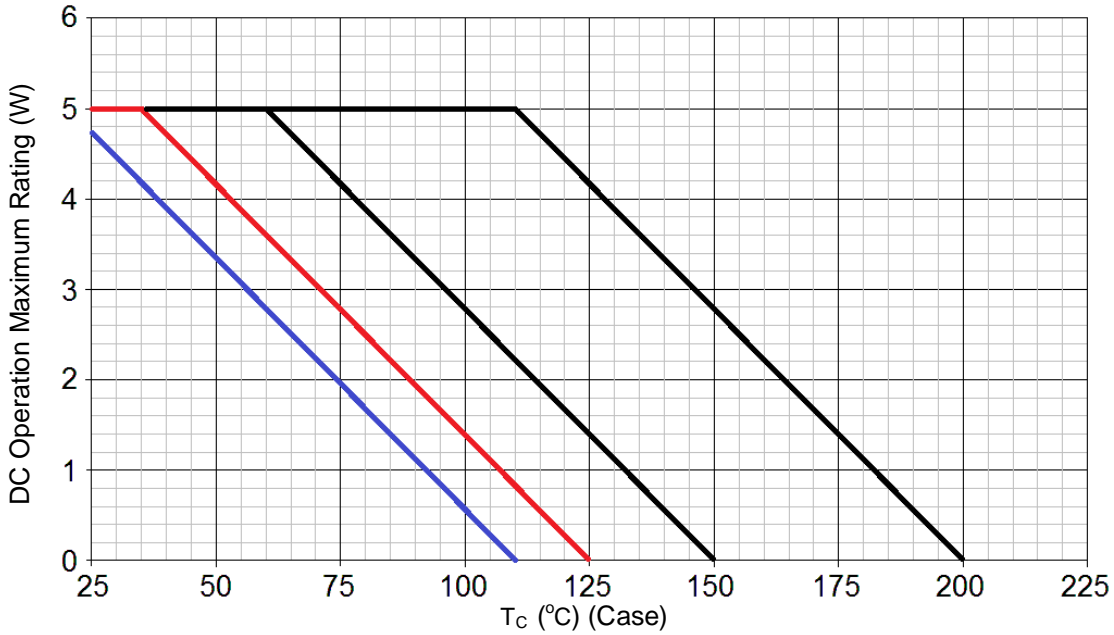


FIGURE 1
Temperature-Power Derating Curve
 NOTES: Thermal Resistance Junction to Case = 4.5 °C/W
 Max Finish-Alloy Temp = 175.0 °C

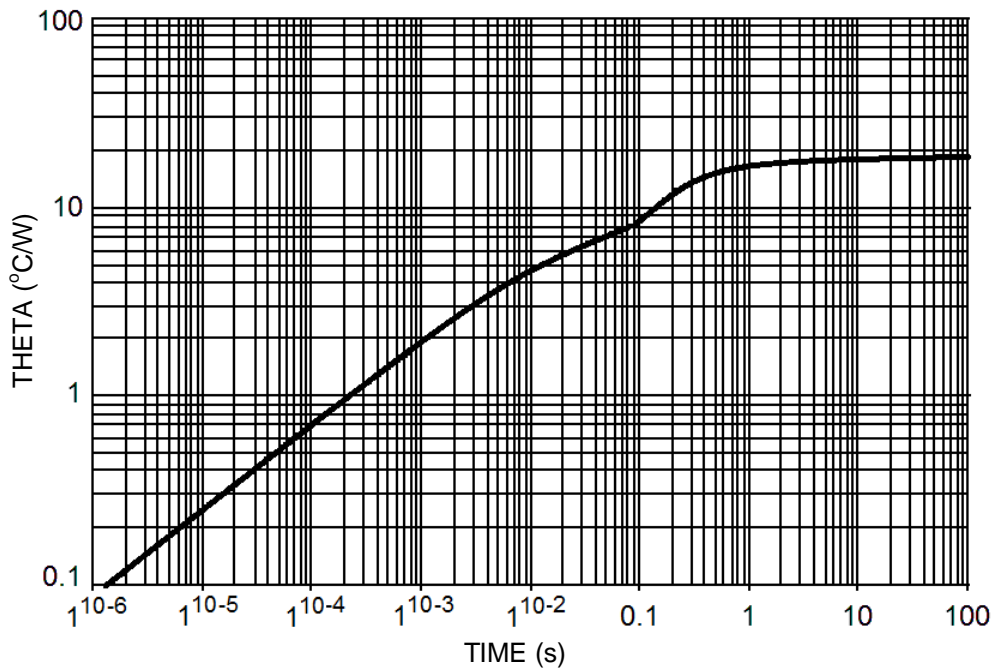
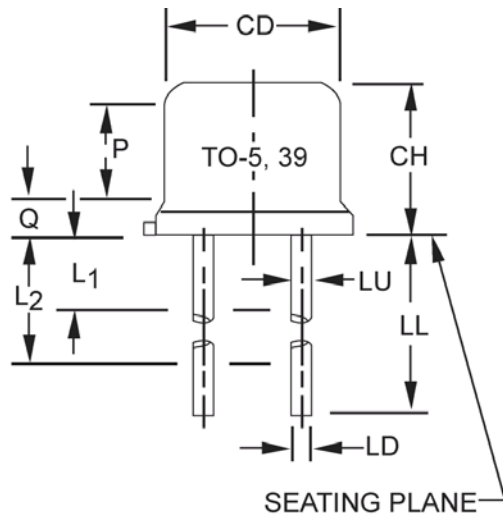
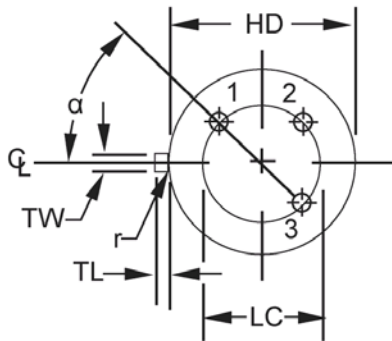


FIGURE 2
Maximum Thermal Impedance
 NOTE: T_C = +25 °C, Thermal Resistance R_{θJC} = 4.5 °C/W

PACKAGE DIMENSIONS


Symbol	Dimensions				Note
	Inches		Millimeters		
	Min	Max	Min	Max	
CD	.305	.335	7.75	8.51	
CH	.240	.260	6.10	6.60	
HD	.335	.370	8.51	9.40	
LC	.200 TP		5.08 TP		6
LD	.016	.021	0.41	0.53	
LL	.500	.750	12.7	19.05	7
LU	See notes 7, 13, 14				
L ₁		.050		1.27	7
L ₂	.250		6.35		7
P	.100		2.54		5
Q		.040		1.02	4
TL	.029	.045	0.74	1.14	3, 10
TW	.028	.034	0.71	.86	9, 10
r		.010		0.25	11
α	45° TP		45° TP		6



- Dimensions are in inches.
- Millimeters are given for general information only.
- Symbol TL is measured from HD maximum.
- Details of outline in this zone are optional.
- Symbol CD shall not vary more than .010 inch (0.25 mm) in zone P. This zone is controlled for automatic handling.
- Leads at gauge plane .054 inch (1.37 mm) +.001 inch (0.03 mm) -.000 inch (0.00 mm) below seating plane shall be within .007 inch (0.18 mm) radius of TP relative to tab. Device may be measured by direct methods or by gauge.
- Symbol LU applies between L₁ and L₂. Dimension LD applies between L₂ and LL minimum. Diameter is uncontrolled in L₁ and beyond LL minimum.
- Lead number 3 is electrically connected to case.
- Beyond r maximum, TW shall be held for a minimum length of .021 inch (0.53 mm).
- Lead number 4 omitted on this variation.
- Symbol r applied to both inside corners of tab.
- For transistor types 2N3418S, 2N3419S, 2N3420S, 2N3421S, LL is .500 (12.70 mm) minimum and .750 (19.05 mm) maximum.
- In accordance with ASME Y14.5M, diameters are equivalent to Φx symbology.
- Lead 1 is emitter, lead 2 is base, and lead 3 is collector.



**Стандарт
Электрон
Связь**

Мы молодая и активно развивающаяся компания в области поставок электронных компонентов. Мы поставляем электронные компоненты отечественного и импортного производства напрямую от производителей и с крупнейших складов мира.

Благодаря сотрудничеству с мировыми поставщиками мы осуществляем комплексные и плановые поставки широчайшего спектра электронных компонентов.

Собственная эффективная логистика и склад в обеспечивает надежную поставку продукции в точно указанные сроки по всей России.

Мы осуществляем техническую поддержку нашим клиентам и предпродажную проверку качества продукции. На все поставляемые продукты мы предоставляем гарантию .

Осуществляем поставки продукции под контролем ВП МО РФ на предприятия военно-промышленного комплекса России , а также работаем в рамках 275 ФЗ с открытием отдельных счетов в уполномоченном банке. Система менеджмента качества компании соответствует требованиям ГОСТ ISO 9001.

Минимальные сроки поставки, гибкие цены, неограниченный ассортимент и индивидуальный подход к клиентам являются основой для выстраивания долгосрочного и эффективного сотрудничества с предприятиями радиоэлектронной промышленности, предприятиями ВПК и научно-исследовательскими институтами России.

С нами вы становитесь еще успешнее!

Наши контакты:

Телефон: +7 812 627 14 35

Электронная почта: sales@st-electron.ru

Адрес: 198099, Санкт-Петербург,
Промышленная ул, дом № 19, литера Н,
помещение 100-Н Офис 331