

Communication Markets Division
3M™ SLiC™ Aerial Closures and Terminals

The Network of Networks



Reliable Protection and Easy Access



3M™ SLiC™ Closures and Terminals for Copper Networks

Copper is the foundation of your network, now and for the foreseeable future. It is your key to provide quality service to both new and existing customers.

In the face of rising costs and increased customer demands, the proper protection and upkeep of your outside plant architecture is crucial—at the regional level, in the neighborhood and at the last mile.

The integrity of your aerial network plays a critical role in delivering the bandwidth and uncompromised triple play service your customers want. You need cutting-edge reliability, accessibility and expandability as never before.

For the last 20 years, 3M SLiC closures and terminals have protected aerial networks, globally, in more than 30 different countries.



3M™ SLiC™ Closures



3M™ SLiC™ Terminals 319, 328, 530

Features and Benefits

One-piece construction	Provides easy installation; no loose parts
Double walled, molded construction	Resists breaking or cracking
Interlocking ends	Extendible for long sheath openings
Hanger/bonding system	No external or additional bonding material required
Quick release latch	Easy re-entry
Attached sheath retention (SR) bracket (only for rigid bond)	Protects cable sheath pull-out or movement
Rubber and spiral end seals	One size fits multiple cable configurations

One-piece construction with no loose parts



Free-breathing Aerial Closures

3M™ SLiC™ Closures and Terminals are free-breathing, meaning they are purposely built to allow for free air circulation of ambient outdoor air through the splice, allowing condensation to drain away. At the same time, your connections are protected from UV sunlight, animals and weather.

3M SLiC Closures are double-wall molded, single-piece closures that are easily installed in construction or maintenance situations.

The one-piece construction permits complete splice access after placement without removal of the closure or bonding from the cables. All components attach to the closure, so there are no parts to lose.



Available in seven sizes that can accommodate splice bundles from 2.2 inches to 9.6 inches, the SLiC closure can be easily extended. Take one or more additional (same size) closures, cut them in half and connect to the left or right side of your existing closures via the interlocking ends. Because of these interlocking ends, the 3M SLiC Closure (2.6x29, 3.6x33, 5.6x33, 7.6x33 models) can expand to meet virtually any size sheath opening without a need to stock special kits.



End Seals for the 3M™ SLiC™ Aerial Closures and Terminals

The 3M™ SLiC™ Aerial Closures and Terminals are offered with two types of end seals. Both options ensure a snug fit on the cables and virtually eliminate the need for drip collars.

- 3M SLiC Rubber End Seal (RES) – These are offered in one-, two- and three-port configurations and can accommodate cables ranging from 0.5 to 3.8 inches. They can be applied in new construction by measuring the cable and cutting the appropriate ring. In the case of existing cables, slit the end seal from outside and tear out the center section. Additional drop can be added by puncturing the smaller circles in the front side of the end seal.
- 3M SLiC Spiral End Seal (SES) – These are offered in three-, four- or five-port configurations based on diameter. End seals can be used in new construction or with existing cables by simply removing the right-sized plugs. The cable range is molded in the end seal.



3M™ SLiC™ Rubber End Seals for the 3M™ SLiC™ Aerial Closures and Terminals



3M™ SLiC™ Spiral End Seals for the 3M™ SLiC™ Aerial Closures and Terminals

The choice
is yours

3M™ SLiC™ Aerial Closures with Floating Bond and Rubber End Seal

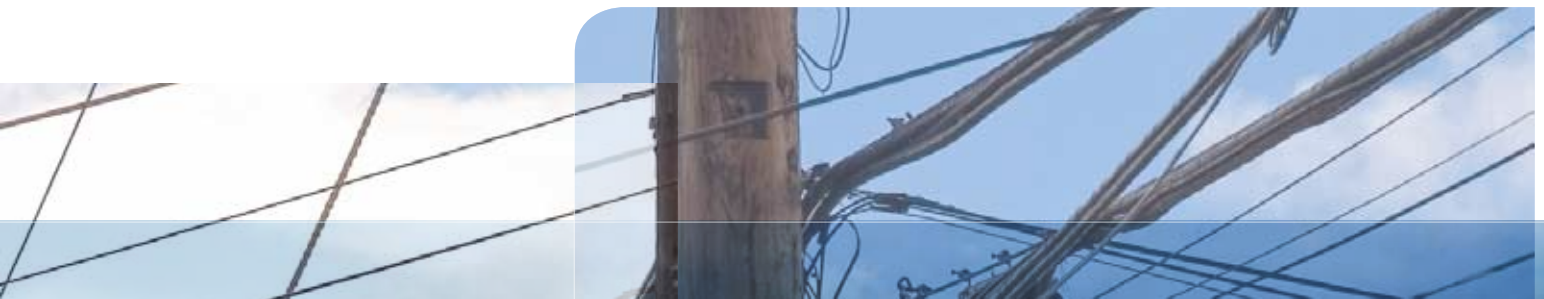
	SLIC-2.2X19	SLIC-2.6X29	SLIC-3.6X19-FB	SLIC-3.6X33	SLIC-5.6X33	SLIC-7.6X33	SLIC-9.6X36
Max. splice opening	14"	17"	14"	21"	21"	21"	25"
Max. splice bundle diameter	2.2"	2.6"	3.6"	3.6"	5.6"	7.6"	9.6"
Max. modular pair count	100 (26 or 24 AWG) 0.4 or 0.5	200 (26 or 24 AWG) 0.4 or 0.5	200 (26 or 24 AWG) 0.4 or 0.5	400 (26 or 24 AWG) 0.4 or 0.5	1200 (26 AWG) 0.4	2400 (26 AWG) 0.4	3600 (26 AWG) 0.4
Max. discrete pair count	50	100	100	200	400	900	1200
End seals included	(2) double port	(2) double port	(2) triple port	(2) triple port	(2) triple port	(2) triple port	(2) triple port
1 Port end seal diameter port #1	NA	NA	NA	NA	NA	NA	NA
2 Port end seal diameter port #1	0.2-1.0"	0.2-1.0"	NA	NA	NA	NA	NA
2 Port end seal diameter port #2	0.2-0.6"	0.2-0.6"	NA	NA	NA	NA	NA
3 Port end seal diameter port #1	NA	NA	0.2-1.6"	0.2-1.6"	0.6-2.2"	1.4-3.8"	1.4-3.8"
3 Port end seal diameter port #2	NA	NA	0.2-1.0"	0.2-1.0"	0.2-1.4"	0.6-1.8"	0.6-1.8"
3 Port end seal diameter port #3	NA	NA	0.2-1.0"	0.2-1.0"	0.2-1.4"	0.6-1.8"	0.6-1.8"
Extendable	No	Yes	No	Yes	Yes	Yes	No
3M ID	80-6104-1494-0	80-6104-1258-9	80-6104-6680-4	80-6104-1257-1	80-6104-1256-3	80-6104-1255-5	80-6105-8169-8

3M™ SLiC™ Aerial Closures with Sheath Retention Rubber End Seal

	SLIC-3.6X33-SR/RES	SLIC-5.6X33-SR/RES
Max. splice opening	21"	21"
Max. splice bundle diameter	3.6"	5.6"
Max. modular pair count	400 (26 or 24 AWG) 0.4 or 0.5	1200 (26 AWG) 0.4
Max. discrete pair count	200	600
End seals included	(2) triple port	(2) four port
Bond assembly model number	4462	4462
3 Port end seal diameter port #1	1.6"	0.2-1.6"
3 Port end seal diameter port #2	0.2-1.0"	0.2-1.0"
3 Port end seal diameter port #3	0.2-1.0"	0.2-1.0"
Extendable	Yes	Yes
3M ID	80-6113-1049-3	80-6113-1051-9

3M™ SLiC™ Aerial Closures with Terminal Brackets and Rubber End Seal

	SLIC-3.6X19-TB/RES
Max. splice opening	21"
Max. splice bundle diameter	3.6"
Max. modular pair count	NA
Max. discrete pair count	NA
End seals included	(2) triple port
Bond assembly model number	NA
3 Port end seal diameter port #1	0.2-1.6"
3 Port end seal diameter port #2	0.2-1.0"
3 Port end seal diameter port #3	0.2-1.0"
Extendable	Yes
3M ID	80-6113-8179-1



3M™ SLiC™ Closures with Floating Bond and Spiral End Seal

	SLIC-2.2X19-SES	SLIC-2.6X29-SES	SLIC-3.6X19-SES	SLIC-3.6X33-SES	SLIC-5.6X33-SES	SLIC-7.6X33-SES	SLIC-9.6X36-SES
Max. splice opening	14"	17"	14"	21"	21"	21"	25"
Max. splice bundle diameter	2.2"	2.6"	3.6"	3.6"	5.6"	7.6"	9.6"
Max. modular pair count	100 (26 or 24 AWG) 0.4 or 0.5	200 (26 or 24 AWG) 0.4 or 0.5	200 (26 or 24 AWG) 0.4 or 0.5	400 (26 or 24 AWG) 0.4 or 0.5	1200 (26 AWG) 0.4	2400 (26 AWG) 0.4	3600 (26 AWG) 0.4
Max. discrete pair count	50	100	100	200	400	900	1200
End seals included	(2) double port	(2) double port	(2) triple port	(2) four port	(2) five port	(2) five port	
End seal diameter range port #1	0.8-1.6"	0.8-1.6"	0.8-2.6"	0.8-2.6"	1.2-3.0"	1.5-3.8"	1.5-3.8"
End seal diameter range port #2	0.5-1.0"	0.5-1.0"	0.5-1.0"	0.5-1.0"	0.8-1.4"	1.2-1.8"	1.2-1.8"
End seal diameter range port #3	0.5-1.0"	0.5-1.0"	0.5-1.0"	0.5-1.0"	1.4-2.0"	0.5-1.2"	0.5-1.2"
End seal diameter range port #4	NA	NA	NA	NA	0.5-1.2"	1.8-2.4"	1.8-2.4"
End seal diameter range port #5	NA	NA	NA	NA	NA	0.5-1.2"	0.5-1.2"
Extendable	No	Yes	No	Yes	Yes	Yes	No
3M ID	80-6107-5998-9	80-6107-5999-7	80-6111-6678-8	80-6107-6000-3	80-6107-6001-1	80-6107-6002-9	80-6107-6003-7

3M™ SLiC™ Aerial Closures with Rigid Bond/Sheath Retention and Spiral End Seal

	SLIC-2.2X19-SR/SES	SLIC-2.6X29-SR/SES	SLIC-3.6X33-SR/SES	SLIC-5.6X33-SR/SES	SLIC-7.6X33-SR/SES	SLIC-9.6X36-SR/SES
Max. splice opening	14"	17"	21"	21"	21"	25"
Max. splice bundle diameter	2.2"	2.6"	3.6"	5.6"	7.6"	9.6"
Max. modular pair count	100 (26 or 24 AWG) 0.4 or 0.5	200 (26 or 24 AWG) 0.4 or 0.5	400 (26 or 24 AWG) 0.4 or 0.5	1200 (26 AWG) 0.4	2400 (26 AWG) 0.4	3600 (26 AWG) 0.4
Max. discrete pair count	50	100	200	400	900	1200
End seals included	(2) double port	(2) double port	(2) triple port	(2) four port	(2) five port	(2) five port
End seal diameter range port #1	0.8-1.6"	0.8-1.6"	0.8-2.6"	1.2-3.0"	1.5-3.8"	1.5-3.8"
End seal diameter range port #2	0.5-1.0"	0.5-1.0"	0.5-1.0"	0.8-1.4"	1.2-1.8"	1.2-1.8"
End seal diameter range port #3	0.5-1.0"	0.5-1.0"	0.5-1.0"	1.4-2.0"	0.5-1.2"	0.5-1.2"
End seal diameter range port #4	0.5-1.0"	0.5-1.0"	0.5-1.0"	0.5-1.2"	1.8-2.4"	1.8-2.4"
End seal diameter range port #5	NA	NA	NA	0.5-1.0"	0.5-1.2"	0.5-1.2"
Extendable	No	Yes	Yes	Yes	Yes	No
3M ID	80-6107-6010-2	80-6107-6011-0	80-6107-6012-8	80-6107-6013-6	80-6107-6014-4	80-6107-6015-1

3M™ SLiC™ Aerial Closures with Shield Bond Assembly 4460S/4462 and Rubber End Seal

	SLIC-2.2X19-4460S SLIC-2.2X19-BA	SLIC-2.6X29-4460S SLIC-2.6X29-BA	SLIC-3.6X33-4460S SLIC-3.6X33-BA	SLIC-5.6X33-4460S SLIC-5.6X33-BA	SLIC-7.6X33-4460S SLIC-7.6X33-BA	SLIC-9.6X36-BA
Max. splice opening	14"	17"	21"	21"	21"	25"
Max. splice bundle diameter	2.2"	2.6"	3.6"	5.6"	7.6"	9.6"
Max. modular pair count	100 (26 or 24 AWG) 0.4 or 0.5	200 (26 or 24 AWG) 0.4 or 0.5	400 (26 or 24 AWG) 0.4 or 0.5	1200 (26 AWG) 0.4	2400 (26 AWG) 0.4	3600 (26 AWG) 0.4
Max. discrete pair count	50	100	200	400	900	1200
End seals included	(2) double port	(2) double port	(1) double port/ (1) triple port	(1) double port/ (1) triple port	(1) double port/ (1) triple port	(1) double port/ (1) triple port
Bond assembly (BA) model number	4460S	4460S	4460S	4460S	4460S	4462
Bond assembly model number (BA Version)	BA version uses 4462	BA version uses 4462	BA version uses 4462	BA version uses 4462	BA version uses 4462	NA
1 Port end seal diameter port #1	NA	NA	NA	NA	NA	NA
2 Port end seal diameter port #1	0.2-1.0"	0.2-1.0"	0.2-2.0"	0.8-2.2"	1.6-3.2"	1.6-3.2"
2 Port end seal diameter port #2	0.2-0.6"	0.2-0.6"	0.2-0.6"	0.2-2.2"	0.2-3.2"	0.2-3.2"
3 Port end seal diameter port #1	NA	NA	0.2-1.6"	0.6-2.2"	1.4-3.8"	1.4-3.8"
3 Port end seal diameter port #2	NA	NA	0.2-1.0"	0.2-1.4"	0.6-1.8"	0.6-1.8"
3 Port end seal diameter port #3	NA	NA	0.2-1.0"	0.2-1.4"	0.6-1.8"	0.6-1.8"
Extendable	No	Yes	Yes	Yes	Yes	No
3M ID	80-6105-7892-6	80-6105-7893-4	80-6105-7894-2	80-6105-7895-9	80-6105-7896-7	80-6105-8170-6
3M ID (BA Version)	80-6105-7831-4	80-6105-7832-2	80-6105-7833-0	80-6104-1597-0	80-6104-1598-8	NA

3M™ SLiC™ Aerial Closures with Shield Bond Assembly 4462 and Spiral End Seal

	SLIC-2.2X19-BA/ SES	SLIC-2.6X29-BA/ SES	SLIC-3.6X19-BA/ SES	SLIC-5.6X33-BA/ SES	SLIC-7.6X33-BA/ SES	SLIC-9.6X36-BA/ SES
Max. splice opening	14"	17"	21"	21"	21"	25"
Max. splice bundle diameter	2.2"	2.6"	3.6"	5.6"	7.6"	9.6"
Max. modular pair count	100 (26 or 24 AWG) 0.4 or 0.5	200 (26 or 24 AWG) 0.4 or 0.5	400 (26 or 24 AWG) 0.4 or 0.5	1200 (26 AWG) 0.4	2400 (26 AWG) 0.4	3600 (26 AWG) 0.4
Max. discrete pair count	50	100	200	400	900	1200
End seals included	(2) double port	(2) double port	(2) triple port	(2) four port	(2) five port	(2) five port
Bond assembly (BA) model number	4462	4462	4462	4462	4462	4462
End seal diameter range port #1	0.8-1.6"	0.8-1.6"	0.8-2.6"	1.2-3.0"	1.5-3.8"	1.5-3.8"
End seal diameter range port #2	0.5-1.0"	0.5-1.0"	0.5-1.0"	0.8-1.4"	1.2-1.8"	1.2-1.8"
End seal diameter range port #3	0.5-1.0"	0.5-1.0"	0.5-1.0"	1.4-2.0"	0.5-1.2"	0.5-1.2"
End seal diameter range port #4	NA	NA	NA	0.5-1.2"	1.8-2.4"	1.8-2.4"
End seal diameter range port #5	NA	NA	NA	NA	0.5-1.2"	0.5-1.2"
Extendable	No	Yes	Yes	Yes	Yes	No
3M ID	80-6107-6004-5	80-6107-6005-2	80-6107-6679-6	80-6107-6007-8	80-6107-6008-6	80-6107-6009-4

Terminals

3M™ SLiC™ Aerial Terminals are distribution terminals and closures contained within a lightweight, double-walled plastic housing. All three sizes of terminals are offered with rubber end seal (RES) or spiral end seal (SES) versions to ensure a snug fit on cables, virtually eliminating the need for drip collars. The 3M SLiC terminal with spiral end seals comes packaged with four-port end seals.

The interlocking ends of this SLiC terminal can be extended to accommodate the splice opening by cutting a standard 3.6x33 (or) 5.6x33 closure in half. Each respective half can be used to extend the terminal to the left or the right.



3M Terminal Blocks

The 3M™ SLiC™ Aerial Terminal system won't block your creativity. You can build your system in 5-, 10- or 25-pair blocks, or build it one pair at a time.

- 3M™ Multi-Pair Terminating System ATS/TR Dual IDC Terminal Blocks (18-24AWG)
- 3M™ Termination Module MX2000 Single-Pair Terminal Blocks (18-24AWG)
- 3M™ Quick Connect System (QCS) 2810 Multi-Pair Blocks (22-24AWG)



3M™ Multi-Pair Terminating System ATS/TR Dual IDC Terminal Blocks Family



3M™ Quick Connect System (QCS) 2810



3M™ Termination Module MX2000 Single-Pair Terminal Block



3M™ SLiC™ Aerial Terminals 319 with Spiral End Seals

	319-MT-DIN/MX/SES	319-MTPI/MX/SES	319-MX-10-SES	319-PI-10-TR/SES
Terminal block pair count provided	Empty (for use with MX2000 with/without protection)	Empty (for use with ATS/TR and MX2000 blocks with/without protection)	10-pair MX2000 without protection	10-pair ATS block
Terminal block max. pair count capability	10 pair	10 pair	10 pair	10 pair
Connection type	IDC	IDC	IDC	IDC
Block type	NA	NA	Single pair	Multi pair
Max. incoming cable ports	4	4	4	4
Max. outgoing cable ports	4	4	4	4
End seal diameter range	0.5-2.6"	0.5-2.6"	0.5-2.6"	0.5-2.6"
3M ID	80-6113-2152-4	80-6113-1771-2	80-6113-1775-3	80-6113-1773-8

3M™ SLiC™ Aerial Terminals 319 with Rubber End Seals

	319-MTPI/MX/RES	319-PI-5-TR/RES	319-PI-10-TR/RES
Terminal block pair count provided	Empty (for use with ATS/TR and MX2000 blocks with/without protection)	5-pair ATS block	10-pair ATS block
Terminal block max. pair count capability	10 pair	10 pair	10 pair
Connection type	IDC	IDC	IDC
Max. incoming cable ports	1	1	1
Max. outgoing cable ports	1	1	1
End seal diameter range	0.2-2.6"	0.2-2.6"	0.2-2.6"
3M ID	80-6113-1770-4	80-6113-1950-2	80-6113-1772-0

3M™ SLiC™ Aerial Terminals 328 with Rubber End Seals

	328-MT	328-MTA/RES	328-MTPI-TR/RES	328-PI-10-TR/RES	328-PI-20-SR/RES	328-PI-25-TR/RES	328-PI-50-TR/RES
Terminal block pair count provided	Empty	Empty	Empty (for use with ATS block)	10-pair ATS block	20-pair ATS block	25-pair ATS block	50-pair ATS block
Terminal block max. pair count capability	25 pair	25 pair	25 pair	25 pair	25 pair	25 pair	50 pair
Connection type	Binding Post	IDC	IDC	IDC	IDC	IDC	IDC
Sheath retention	No	No	No	No	Yes	No	No
Max. incoming cable ports	1	1	1	1	1	1	1
Max. outgoing cable ports	1	1	1	1	3	1	1
End seal diameter range	0.2-2.6"	0.2-2.6"	0.2-2.6"	0.2-2.6"	0.2-2.6"	0.2-2.6"	0.2-2.6"
3M ID	80-6107-4688-7	80-6113-2180-5	80-6113-1217-6	80-6113-0396-9	80-6113-1044-4	80-6113-0397-7	80-6113-0399-3

3M™ SLiC™ Aerial Terminals 328 with Sprial End Seals

	328-MT/MX/SES	328-MT/SES	328-MTA/SES	328-MTPI-TR/SES	328-PI-5-TR/SES	328-PI-10-TR/SES	328-PI-25-TR/SES	328-PI-50-TR/SES
Terminal block pair count provided	Empty (for use with MX2000 with and without protection)	Empty	Empty	Empty (for use with ATS block)	5-pair ATS block	10-pair ATS block	25-pair ATS block	50-pair ATS block
Terminal block max. pair count capability	25 pair	25 pair	25 pair	25 pair	25 pair	25 pair	25 pair	50 pair
Connection type	IDC	Binding Post	IDC	IDC	IDC	IDC	IDC	IDC
Sheath retention	No	No	No	No	No	No	No	No
Max. incoming cable ports	3	3	3	3	3	3	3	3
Max. outgoing cable ports	3	3	3	3	3	3	3	3
End seal diameter range	0.5-2.6"	0.5-2.6"	0.5-2.6"	0.5-2.6"	0.5-2.6"	0.5-2.6"	0.5-2.6"	0.5-2.6"
3M ID	80-6113-2386-8	80-6107-6034-2	80-6113-6079-7	80-6113-5692-0	80-6113-0703-6	80-6113-0700-2	80-6113-0702-8	80-6113-0704-4

3M™ SLiC™ Aerial Terminals 530 with Spiral End Seals

	530-MT/SES	530-MTA/SES	530-MTPI-TR/SES	530-PI-5-TR/SES	530-PI-10-TR/SES	530-PI-25-TR/SES	530-PI-50-TR/SES
Terminal block pair count provided	Empty	Empty	Empty (for use with ATS block)	5-pair ATS block	10-pair ATS block	25-pair ATS block	50-pair ATS block
Terminal block max. pair count capability	25 pair	25 pair	25 pair	25 pair	25 pair	25 pair	50 pair
Connection type	Binding Post	IDC	IDC	IDC	IDC	IDC	IDC
Max. incoming cable ports	4	4	4	4	4	4	4
Max. outgoing cable ports	4	4	4	4	4	4	4
End seal diameter range port #1	1.2-3.0"	1.2-3.0"	1.2-3.0"	1.2-3.0"	1.2-3.0"	1.2-3.0"	1.2-3.0"
End seal diameter range port #2	0.8-1.4"	0.8-1.4"	0.8-1.4"	0.8-1.4"	0.8-1.4"	0.8-1.4"	0.8-1.4"
End seal diameter range port #3	1.4-2.0"	1.4-2.0"	1.4-2.0"	1.4-2.0"	1.4-2.0"	1.4-2.0"	1.4-2.0"
End seal diameter range port #4	0.5-1.2"	0.5-1.2"	0.5-1.2"	0.5-1.2"	0.5-1.2"	0.5-1.2"	0.5-1.2"
3M ID	80-6107-6035-9	80-6107-6078-9	80-6111-5693-8	80-6113-0708-5	80-6113-0705-1	80-6113-0707-7	80-6113-0709-3

3M™ SLiC™ Aerial Terminals 530 with Rubber End Seals

	530-MTPI-TR/RES	530-PI-10-TR/RES	530-PI-20-SR/RES	530-PI-25-TR/RES	530-PI-50-TR/RES
Terminal block pair count provided	Empty (for use with ATS block)	10-pair ATS block	20-pair ATS block	25-pair ATS block	50-pair ATS block
Terminal block max. pair count capability	25 pair	25 pair	25 pair	25 pair	50 pair
Connection type	IDC	IDC	IDC	IDC	IDC
Max. incoming cable ports	1	1	1	1	1
Max. outgoing cable ports	1	1	3	1	1
End seal diameter range	0.2-4.0"	0.2-4.0"	0.2-4.0"	0.2-4.0"	0.2-4.0"
3M ID	80-6113-1218-4	80-6113-1220-0	80-6113-1047-7	80-6113-1221-8	80-6113-1222-6

3M™ SLiC™ Stubbed Aerial Terminal

The 3M SLiC Stubbed Aerial Terminals are designed to provide flexibility to the installer. They offer fixed-count termination for aerial drop wires in a weatherproof, non-metallic housing.

The stubbed aerial terminals can be installed on the left or right side of an aerial closure, offered with a 12-foot cable tail. The terminal is offered with 10- or 25-pair 3M™ Multi-Pair Terminating System ATS/TR termination block or 10-pair 3M™ Termination Module MX2000 Single-Pair Terminal Block (protected or unprotected). The unprotected version can be upgraded by switching the blocks to protected version in the same terminal if needed.



3M™ SLiC™ Stubbed Aerial Terminal with 3M™ SLiC™ Aerial Closure



3M™ SLiC™ Stubbed Aerial Terminal with 3M™ Multi-Pair Terminating System ATS/TR termination block



3M™ SLiC™ Stubbed Aerial Terminal with 3M™ Termination Module MX2000 unprotected/protected Terminal Block

3M™ SLiC™ Stubbed Aerial Terminals

	SAT-MX-10-R	SAT-MXP-10-L	SAT-PI-10-L	SAT-PI-10-R	SAT-PI-25-L	SAT-PI-25-R
Terminal block pair count provided	10-pair MX2000 block	10-pair MX2000 block with protection	10-pair ATS/TR block	10-pair ATS/TR block	25-pair ATS/TR block	25-pair ATS/TR block
Connection type	IDC	IDC	IDC	IDC	IDC	IDC
Cable entry	Right	Left	Left	Right	Left	Right
Protected	No	Yes	No	No	No	No
3M ID	80-6113-2386-8	80-6107-6034-2	80-6113-6079-7	80-6113-5692-0	80-6113-0700-2	80-6113-0702-8



Extension of 3M™ SLiC™ Closures or Terminals

3M SLiC Aerial Closures and Terminals can be extended to cover sheath damage or longer splice opening by simply cutting a second closure in the middle. Each cut half section will only fit over the similar end of the main closure/terminal body. The 3M SLiC Closures that can be extended are 2.6x29, 3.6x33, 5.6x33 and 7.6x33.

The 3M SLiC Aerial Terminals 319 and 328 can be extended by cutting the 3.6x33 closure in the middle and attaching it to the terminal. 3M SLiC Terminal 530 can be extended by using the 5.6x33 closure.



Secure Your Investment

The 3M™ SLiC™ Aerial Closure can be sealed and secured against unauthorized access. This can be done by slitting through the thin plastic membrane (Fig. 1) and placing a heavy duty cable tie (Fig. 2) or hose clamp (Fig. 3).

The 3M™ SLiC™ Aerial Terminal can also be sealed and secured against unauthorized access by placing a lock or cable tie (Fig. 4).

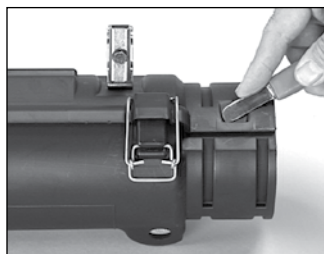


Figure 1

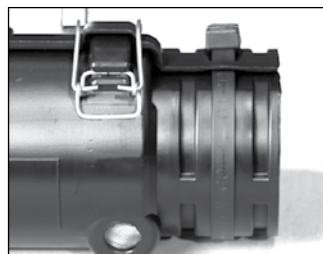


Figure 2



Figure 3



Figure 4

3M™ SLiC™ Aerial Closures and Terminals Accessories

	Product Number/Packaging Info	Description
	SLIC-SR-3 Packaging: 10 kits per box Min. Order: 10 kits 3M ID: 80-6108-6428-4	3M™ SLiC™ Sheath Retention Kit For 3" Terminals and 2", 3" Closures Sheath Retention Kit adds sheath retention to 3" SLiC terminals and closures. These are used to restrict the cable movement.
	SLIC-SR-5 Packaging: 10 kits per box Min. Order: 10 Kits 3M ID: 80-6108-6429-2	3M™ SLiC™ Sheath Retention Kit For 5" Terminals and 5", 7", 9" Closures Sheath Retention Kit adds sheath retention to 5" SLiC terminals and closures. These are used to restrict the cable movement.
	SLIC-AC-HB1 Packaging: 10 sets per box Min. Order: 10 set 3M ID: 80-6101-3353-2	3M™ SLiC™ Offset Hanger Bracket Designed to support and bond the SLiC closures and terminals to the messenger strand when more than one cable is supported by the messenger.
	SLIC-AC-HB2 Packaging: 10 sets per box Min. Order: 10 sets 3M ID: 80-6108-4677-8	3M™ SLiC™ Extended Hanger Bracket Stainless steel aerial offset hanger bracket 3.0" for the SLiC 530 Fiber Terminal Closures, SLiC 533 & 733 Fiber Closures, and the SLiC Copper Closures and Terminals.
	AC-HB4 Packaging: 2 each Min. Order: 2 each 3M ID: 80-6113-1470-1	Aerial Offset Hanger Bracket, 4.0" For overlashing application.
	4460-S Packaging: 100 each per box Min. Order: 100 each 3M ID: 80-6100-6312-7	3M™ Scotchlok™ Shield Bond Connector The 4462-SNA shield bond connector has a longer stud, deepened nuts and an insulating shoe. Suitable for cable size 100 pair or less.
	4460-DS Packaging: 100 each per box Min. Order: 100 each 3M ID: 80-6113-1641-7	3M™ Scotchlok™ Shield Bond Connector The 4460-DS connector is similar to 4460-D shield connector and is supplied with a small piece of pair saver to aid connector insertion and to protect conductors. This connector is suitable for a cable size of 100 pair or less.
	4462-SN Packaging: 500 each per box Min. Order: 500 each 3M ID: 80-6104-1542-6	3M™ Scotchlok™ Shield Bond Connector The 4462-SN shield bond connector is an improved version of the popular 4462 shield bond connector, with a longer and stronger stud to easily accommodate two bond braids (with eyelets).
	4462-SNA Packaging: 500 each per box Min. Order: 500 each 3M ID: 80-6105-8211-8	3M™ Scotchlok™ Shield Bond Connector The 4462-SNA shield bond connector has a longer stud, deepened nuts and an insulating shoe.
	SLIC-2-SES Packaging: 10 each per box Min. Order: 10 each 3M ID: 80-6107-6046-6	3M™ SLiC™ Spiral End Seal For 2" Closures Triple port spiral end seal for 2.6x19 or 2.6x29 closures.

3M™ SLiC™ Aerial Closures and Terminals Accessories

	Product Number/Packaging Info	Description
	SLIC-3-SES Packaging: 10 each per box Min. Order: 10 each 3M ID: 80-6107-6047-4	3M™ SLiC™ Spiral End Seal For 3" Closures and Terminals Triple-port spiral end seal for 3.6x19 and 3.6x33 closures and 319 and 328 terminals..
	SLIC-5-SES Packaging: 10 each per box Min. Order: 10 each 3M ID: 80-6107-6048-2	3M™ SLiC™ Spiral End Seal For 5" Closures & Terminals Four-port spiral end seal for 5.6x33 closure and 530 terminal.
	SLIC-7-SES Packaging: 5 each per box Min. Order: 5 each 3M ID: 80-6107-6049-0	3M™ SLiC™ Spiral End Seal For 7" Closures Five-port spiral end seal for 7" and 9" closures.
	SLIC-ES/2DC Packaging: 10 each per box Min. Order: 10 each 3M ID: 80-6104-1487-4	3M™ SLiC™ Closure Rubber End Seal Double Port 2" double-port rubber end seal for 2.6X19 and 2.6X29 closures.
	SLIC-ES/2SC Packaging: 10 each per box Min. Order: 10 each 3M ID: 80-6105-8173-0	3M™ SLiC™ Closure Rubber End Seal Single Port 2" single-port rubber end seal for 2.6X19 and 2.6X29 closures.
	SLIC-ES/3DC Packaging: 10 each per box Min. Order: 10 each 3M ID: 80-6105-8175-5	3M™ SLiC™ Closure Rubber End Seal Double Port Double-port rubber end seal for 3.6x19 and 3.6x33 closures and 319 and 328 terminals.
	SLIC-ES/3SC Packaging: 10 each per box Min. Order: 10 each 3M ID: 80-6105-8174-8	3M™ SLiC™ Closure Rubber End Seal Single Port Single-port rubber end seal for 3.6x19 and 3.6x33 closures and 319 and 328 terminals.
	SLIC-ES/3TC Packaging: 10 each per box Min. Order: 10 each 3M ID: 80-6104-1490-8	3M™ SLiC™ Closure Rubber End Seal Triple Port Triple-port rubber end seal for 3.6x19 and 3.6x33 closures and 319 and 328 terminals.
	SLIC-ES/5DC Packaging: 5 each per box Min. Order: 5 each 3M ID: 80-6105-7816-5	3M™ SLiC™ Closure Rubber End Seal Double Port Double-port rubber end seal for the 5.6x33 closure and the 530 terminal.
	SLIC-ES/5SC Packaging: 5 each per box Min. Order: 5 each 3M ID: 80-6107-7196-8	3M™ SLiC™ Closure Rubber End Seal Single Port Single-port rubber end seal for the 5.6x33 closure and the 530 terminal.
	SLIC-ES/5TC Packaging: 5 each per box Min. Order: 5 each 3M ID: 80-6104-1489-0	3M™ SLiC™ Closure Rubber End Seal Triple Port Triple-port rubber end seal for the 5.6x33 closure and the 530 terminal.
	SLIC-ES/7DC Packaging: 5 each per box Min. Order: 5 each 3M ID: 80-6104-1699-4	3M™ SLiC™ Closure Rubber End Seal Double Port Double-port rubber end seal. Also fits in a 9" closure for 7.6x33 and 9.6x36 closures.
	SLIC-ES/7TC Packaging: 5 each per box Min. Order: 5 each 3M ID: 80-6104-1488-2	3M™ SLiC™ Closure Rubber End Seal Triple Port Triple-port rubber end seal. Also fits in a 9" closure for 7.6x33 and 9.6x36 closures.

3M™ SLiC™ Aerial Closures and Terminals Accessories

	Product Number/Packaging Info	Description
	<p>SLIC-TB Packaging: 10 each per box Min. Order: 10 each 3M ID: 80-6113-8197-3</p>	<p>3M™ SLiC™ Terminal Bracket Terminal bracket for 6-pair Emerson Block. Can be used with 3.6x19, 3.6x33, 5.6x33 and 7.6x33 closures.</p>
	<p>3900-A Packaging: 100 each per box Min. Order: 100 each 3M ID: 80-6107-5739-7</p>	<p>3M™ Aerial Service Wire Closure Kit 3900-A The 3900-A Aerial Service Wire Closure is a free-breathing aerial butt splice for 2 pair drop-wire applications that can be pole- or wall-mounted. Utilizing 3M Scotchlok™ Connectors UY2 or UR2 connectors the 3900-A provides primary physical protection that is resistant to UV rays.</p>
	<p>SLIC-SACS Packaging: 100 each per box Min. Order: 1 box 3M ID: 80-6113-9056-0</p>	<p>3M™ SLiC™ Cable Spacers These aerial cable spacers are stackable so the desired height can be achieved.</p>
	<p>SLIC-DCS Packaging: 10 each per box Min. Order: 10 each 3M ID: 80-6113-9057-8</p>	<p>3M™ SLiC™ Cable Strap Delrin cablestrap in a 50-foot reel.</p>
	<p>SLIC-DLH Packaging: 100 each per box Min. Order: 1 box 3M ID: 80-6113-9058-6</p>	<p>3M™ SLiC™ Locking Heads Delrin locking heads to use with Delrin strap.</p>

3M, SLiC and Scotchlok are trademarks of 3M Company.

Important Notice

All statements, technical information, and recommendations related to 3M's products are based on information believed to be reliable, but the accuracy or completeness is not guaranteed. Before using this product, you must evaluate it and determine if it is suitable for your intended application. You assume all risks and liability associated with such use. Any statements related to the product which are not contained in 3M's current publications, or any contrary statements contained on your purchase order shall have no force or effect unless expressly agreed upon, in writing, by an authorized officer of 3M.

Warranty; Limited Remedy; Limited Liability.

This product will be free from defects in material and manufacture for a period of 12 months from the date of purchase. **3M MAKES NO OTHER WARRANTIES INCLUDING, BUT NOT LIMITED TO, ANY IMPLIED WARRANTY OF MERCHANTABILITY OR FITNESS FOR A PARTICULAR PURPOSE.** If this product is defective within the warranty period stated above, your exclusive remedy shall be, at 3M's option, to replace or repair the 3M product or refund the purchase price of the 3M product. **Except where prohibited by law, 3M will not be liable for any loss or damage arising from this 3M product, whether indirect, special, incidental or consequential regardless of the legal theory asserted.**



Communication Markets Division

6801 River Place Blvd.
 Austin, TX 78726-9000
 800/426 8688
 Fax 800/626 0329
www.3M.com/Telecom

Please recycle. Printed in USA.
 © 3M 2012. All rights reserved.
 80-6113-8637-8



Стандарт Электрон Связь

Мы молодая и активно развивающаяся компания в области поставок электронных компонентов. Мы поставляем электронные компоненты отечественного и импортного производства напрямую от производителей и с крупнейших складов мира.

Благодаря сотрудничеству с мировыми поставщиками мы осуществляем комплексные и плановые поставки широчайшего спектра электронных компонентов.

Собственная эффективная логистика и склад в обеспечивает надежную поставку продукции в точно указанные сроки по всей России.

Мы осуществляем техническую поддержку нашим клиентам и предпродажную проверку качества продукции. На все поставляемые продукты мы предоставляем гарантию .

Осуществляем поставки продукции под контролем ВП МО РФ на предприятия военно-промышленного комплекса России , а также работаем в рамках 275 ФЗ с открытием отдельных счетов в уполномоченном банке. Система менеджмента качества компании соответствует требованиям ГОСТ ISO 9001.

Минимальные сроки поставки, гибкие цены, неограниченный ассортимент и индивидуальный подход к клиентам являются основой для выстраивания долгосрочного и эффективного сотрудничества с предприятиями радиоэлектронной промышленности, предприятиями ВПК и научно-исследовательскими институтами России.

С нами вы становитесь еще успешнее!

Наши контакты:

Телефон: +7 812 627 14 35

Электронная почта: sales@st-electron.ru

Адрес: 198099, Санкт-Петербург,
Промышленная ул, дом № 19, литера Н,
помещение 100-Н Офис 331