

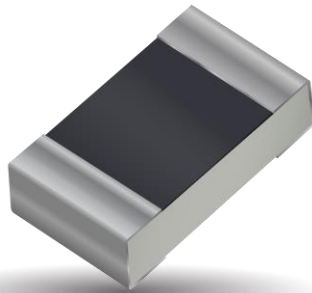


Part No. 1001312

Wi-Fi / BT / Zigbee or UWB Ceramic Antenna

2.4 GHz or 6.0 – 8.5 GHz

Supports: Wi-Fi applications, Agriculture, Automotive, Bluetooth, Zigbee, WLAN, Smart Home, Healthcare, Digital Signage, UWB



*UWB layout offered in Appendix 1

Ceramic Wi-Fi or UWB Ceramic Antenna

2400 – 2485 MHz;
6.0 – 8.5 GHz

KEY BENEFITS

Stay-in-Tune

IMD antenna technology provides superior RF field containment, resulting in less interaction with surrounding components.

Quicker Time-to-Market

By optimizing antenna size, performance and emissions, customer and regulatory specifications are more easily met.

Reliability

Products are the latest RoHS version compliant.

APPLICATIONS

- Embedded design
- Cellular, Headsets, Tablets
- Gateway, Access Point
- Handheld
- Telematics
- Tracking
- Healthcare
- M2M, Industrial devices
- Smart Grid
- OBD-II
- UWB

Ethertronics' series of ceramic Isolated Magnetic Dipole™ (IMD) antennas deliver on the key needs of device designers for higher functionality and performance in smaller/thinner designs.

Real-World Performance and Implementation

Ceramic antennas may look alike on the outside, but the important difference is inside. Other antennas may contain simple PIFA or monopole designs that interact with their surroundings, complicating layout or changing performance with use position. Ethertronics' antennas utilize patented IMD technology to deliver a unique size and performance combination.

Layouts:

1001312-01: Single Band 2.4 GHz layout

1001312-04: UWB 6.0 - 8.5 GHz layout (Appendix 1)

Electrical Specifications

Typical performance on 55 x 25 mm PCB

| Frequency | 2400 – 2485 MHz | 6.0 – 8.5 GHz |
|----------------------|--------------------|---------------------|
| Peak Gain | 1.88 dBi | Refer to Appendix 1 |
| Average Efficiency | 62% | |
| VSWR Match | 1.8:1 max | |
| Feed Point Impedance | 50 ohms unbalanced | |
| Polarization | Linear | |
| Power Handling | 0.5 Watt CW | |

Mechanical Specifications & Ordering Part Number

| Ordering Part Number | 1001312 |
|----------------------|--|
| Size (mm) | 2.00 x 1.20 x 0.55 |
| Mounting | SMT |
| Weight (grams) | 0.003 |
| Packaging | Tape & Reel, 1001312 – 1,000 pieces per reel |
| Demo Board | 1001312-01 (2.400 - 2.485 GHz) 1001312-04 (UWB 6.000 - 8.500 GHz) |

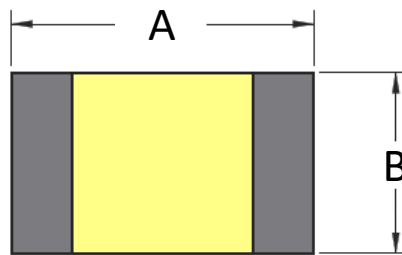
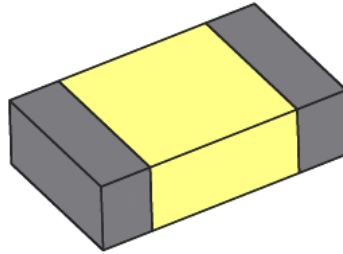


2.4GHz Ethertronics' Embedded Antenna Specifications
Ethertronics produces a wide variety of standard and custom antennas to meet user needs.

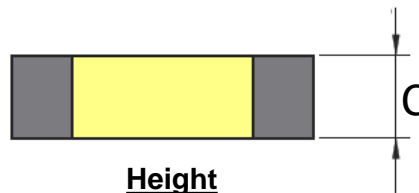
Antenna Dimensions

Typical antenna dimensions (mm)

| Part Number | A (mm) | B (mm) | C (mm) |
|-------------|-----------|-----------|------------|
| 1001312 | 2.0 ± 0.3 | 1.2 ± 0.3 | 0.55 ± 0.2 |



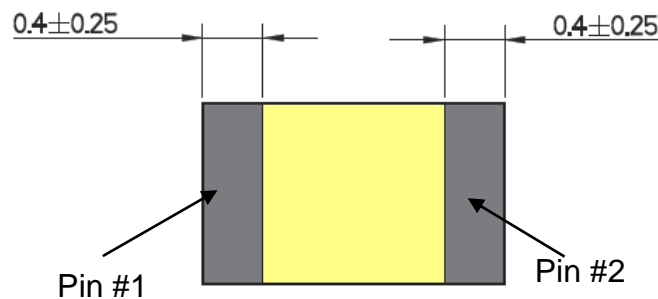
Top View



Height

| Pin | Description |
|-----|-------------|
| 1 | Feed |
| 2 | Ground |

*Pin #1 and Pin #2 are interchangeable.



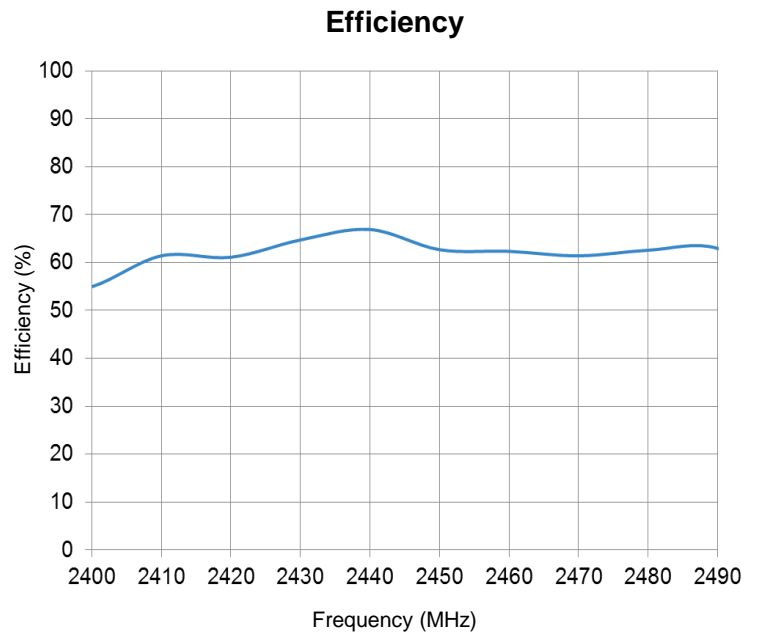
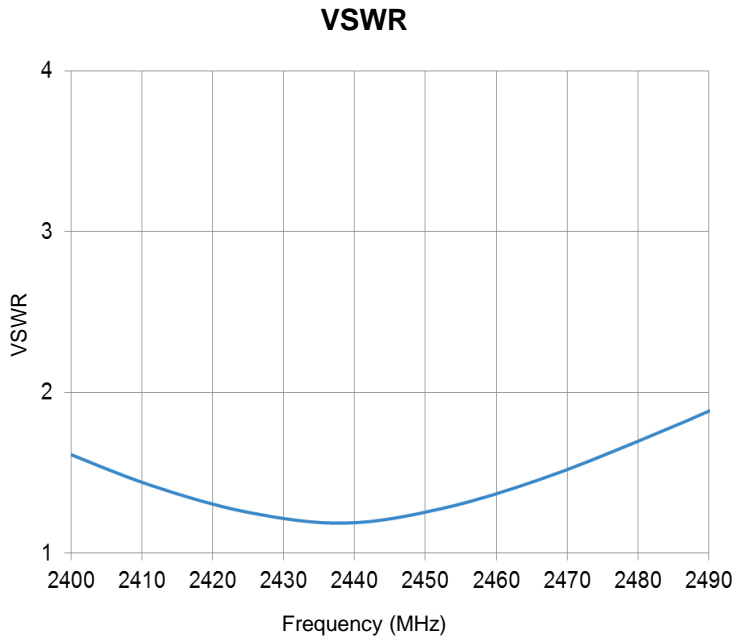
Bottom View



2.4GHz Ethertronics' Embedded Antenna Specifications
Ethertronics produces a wide variety of standard and custom antennas to meet user needs.

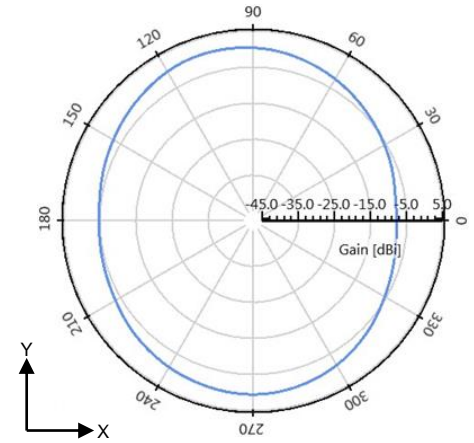
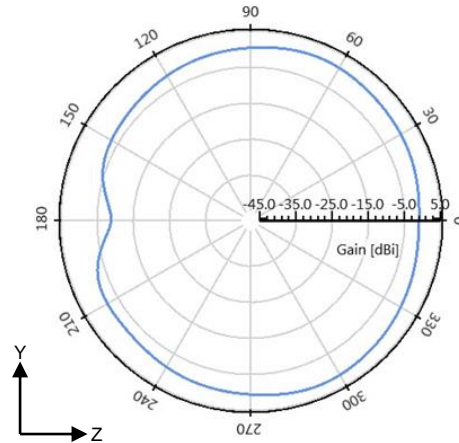
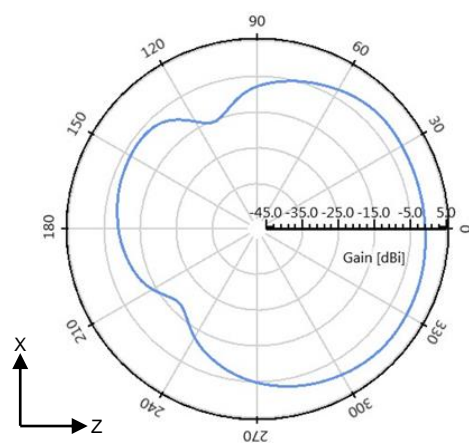
VSWR, Efficiency Plots

Typical performance on 55 x 25 mm PCB



Antenna Radiation Patterns

Typical performance on 55 x 25 mm PCB
Measured @ 2440 MHz



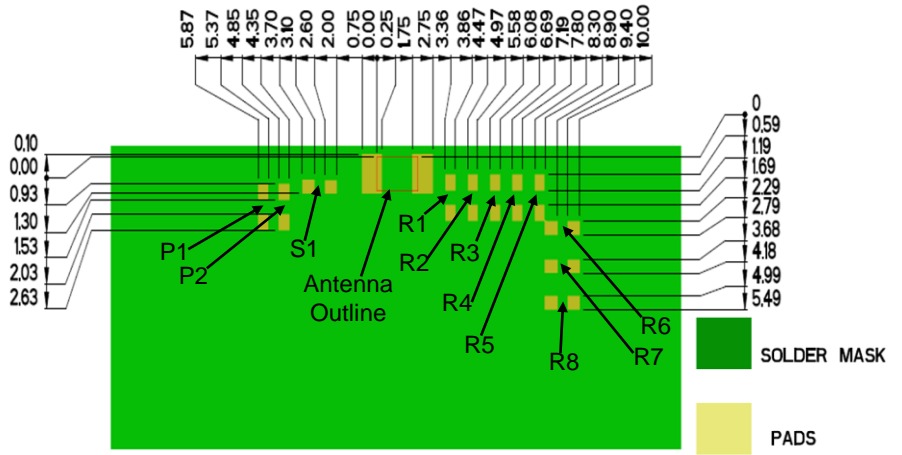
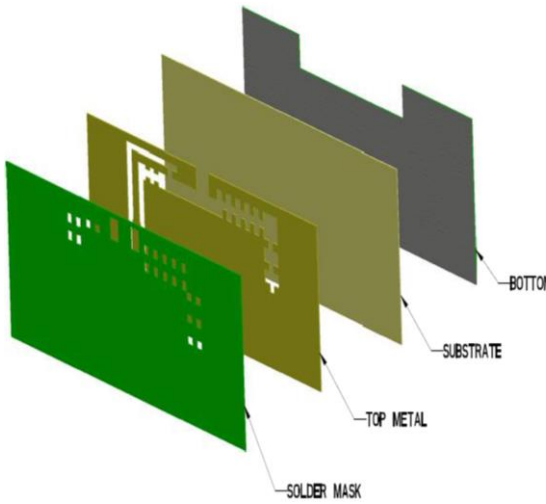


2.4GHz Ethertronics' Embedded Antenna Specifications

Ethertronics produces a wide variety of standard and custom antennas to meet user needs.

Antenna Layout (1001312-01)

Typical layout dimensions (mm)



- Additional VIAS : Diam. 0.2mm to be placed around antenna, (no vias on transmission lines).
- Via holes must be covered by solder mask

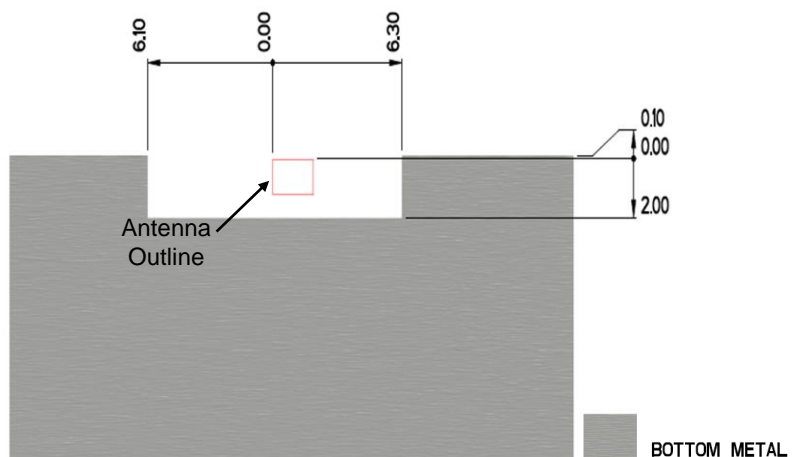
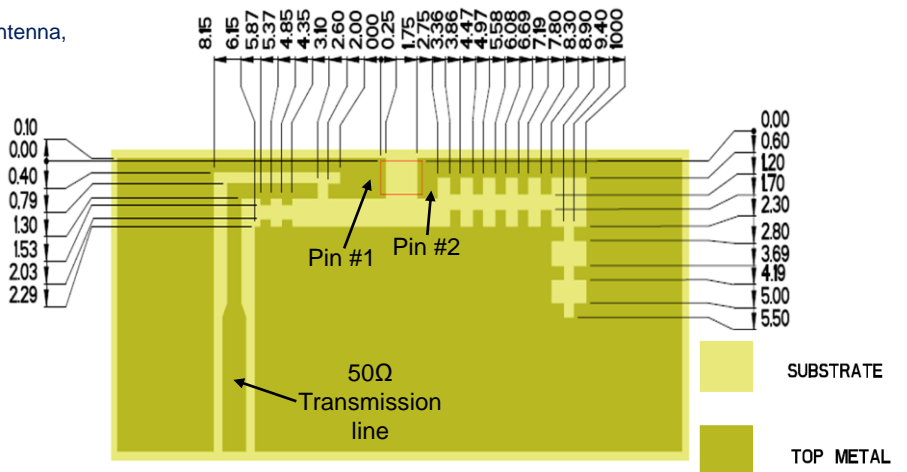
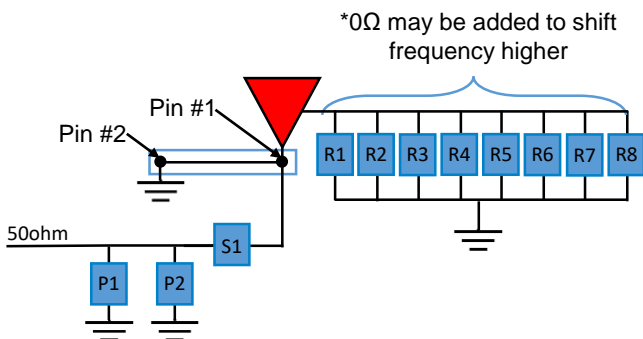
Pin Descriptions

| Pin# | Description |
|------|-------------|
| 1 | Feed |
| 2 | Ground |

Matching Pi Network (Demo Board)

| Component | Value | Tolerance |
|-----------|-------|-----------|
| P1 | 4.7nH | ±0.1nH |
| P2 | DNI | N/A |
| S1 | 0Ω | N/A |
| R1 | 0Ω | N/A |
| R2 – R8 | DNI | N/A |

*Actual matching values depend on customer design



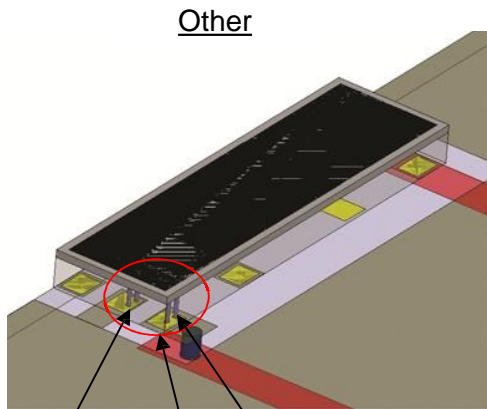


2.4GHz Ethertronics' Embedded Antenna Specifications

Ethertronics produces a wide variety of standard and custom antennas to meet user needs.

Antenna Layout Tips (General reference)

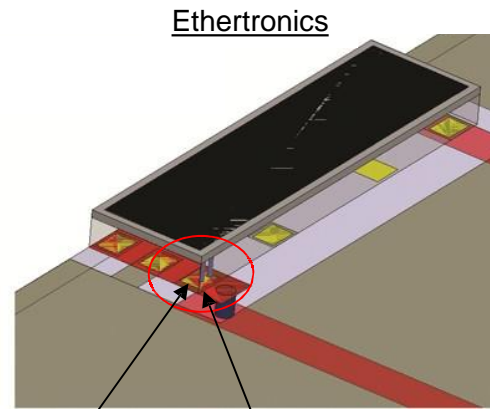
Important layout guidelines for correct operation of Ethertronics Ceramic Antennas. Please read guidelines below before laying out the antenna in a device. Figure 1 shows the typical antenna layout. Figure 2 shows Ethertronics' antenna layout.



Other

Shorting pin Feed pin

Antenna tuning loop:
Figure 1
Typical antenna layout



Ethertronics

Shorting pin and feed pin are shared in Ethertronics ceramic antennas

Figure 2
Ethertronics antenna layout
(required)

- The antenna tuning loop is formed by the PCB layout.
- The feed pin and shorting pin are combined because it requires very close proximity to achieve more band- width.



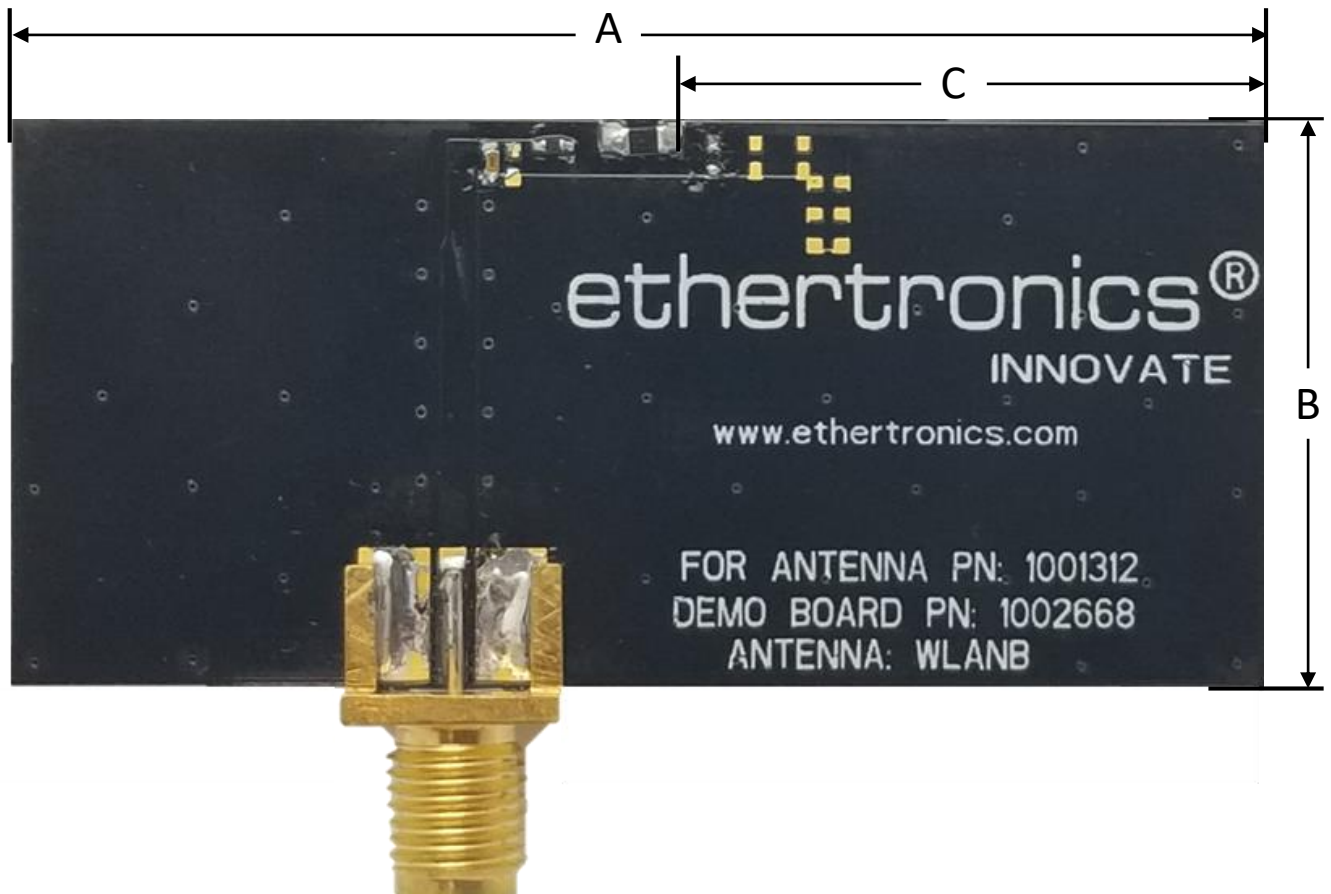
2.4GHz Ethertronics' Embedded Antenna Specifications

Ethertronics produces a wide variety of standard and custom antennas to meet user needs.

Antenna Demo Board

Typical layout dimensions (mm)

| Part Number | A (mm) | B (mm) | C (mm) |
|-------------|--------|--------|--------|
| 1001312-01 | 55.0 | 25.0 | 26.0 |





Appendix 1 UWB Ceramic Ethertronics' Embedded Antenna Specifications
Ethertronics produces a wide variety of standard and custom antennas to meet user needs.

Appendix 1

Appendix 1 gives instructions on how to achieve UWB performances through layout and impedance matching network.
(6.0 – 8.5 GHz)

| Frequency (GHz) | 6.0 – 8.5 |
|----------------------|--------------------|
| Peak Gain | 4.8 dBi |
| Average Efficiency | 84% |
| VSWR Match | 2.0:1 max |
| Feed Point Impedance | 50 ohms unbalanced |
| Polarization | Linear |
| Power Handling | 2 Watt CW |

*Data shown above has Appendix 1 matching applied on 26.0 x 25.0 mm PCB,
Using UWB 1001312-04 layout



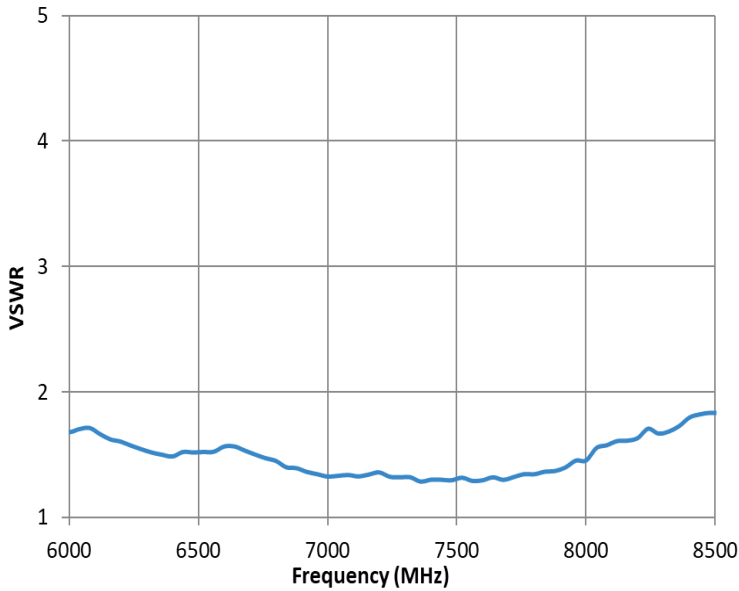


Appendix 1 UWB Ceramic Ethertronics' Embedded Antenna Specifications
Ethertronics produces a wide variety of standard and custom antennas to meet user needs.

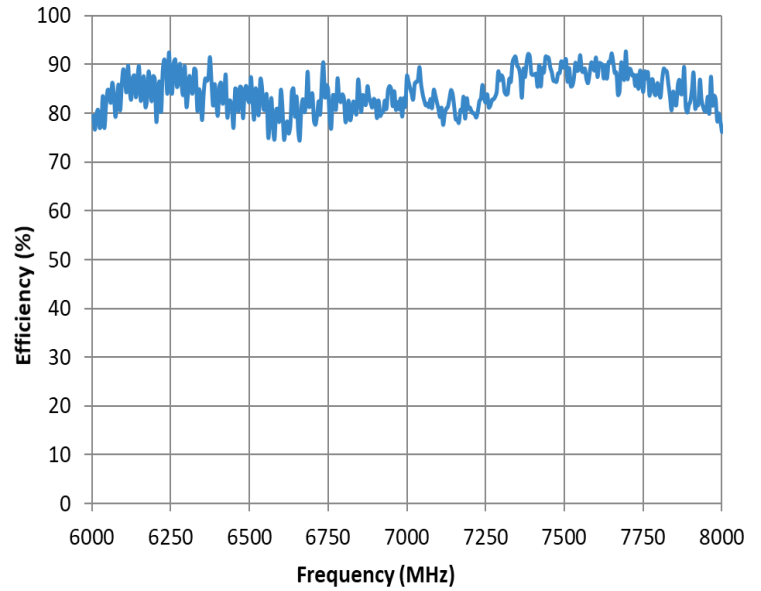
VSWR, Efficiency Plots

Typical performance on 26.0 x 25.0 mm PCB

VSWR



Efficiency

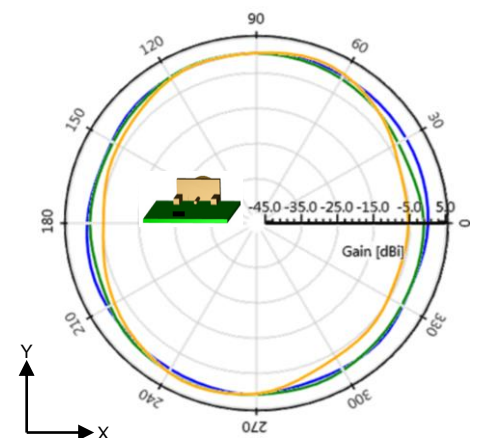
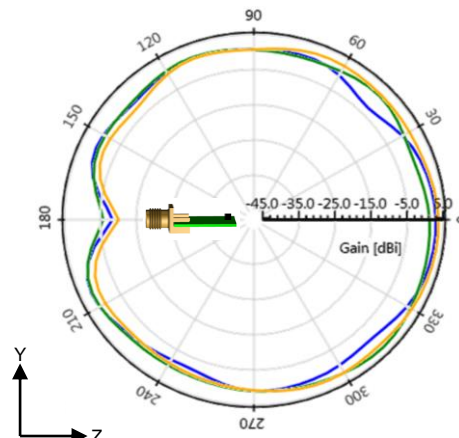
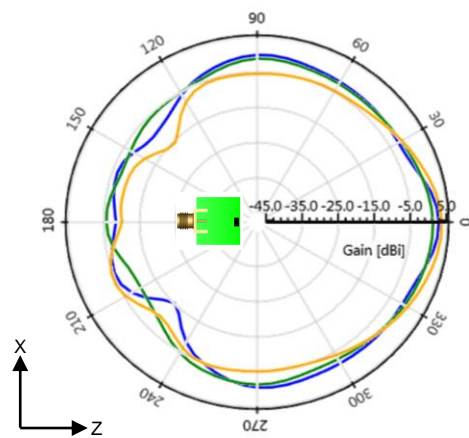
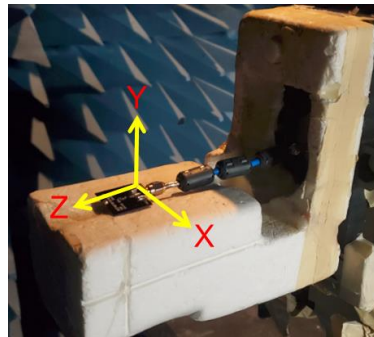


Antenna Radiation Patterns

Typical performance on 26.0 x 25.0 mm PCB

Measured @ 6500, 7000, 8000 MHz

- 6500 MHz
- 7000 MHz
- 8000 MHz

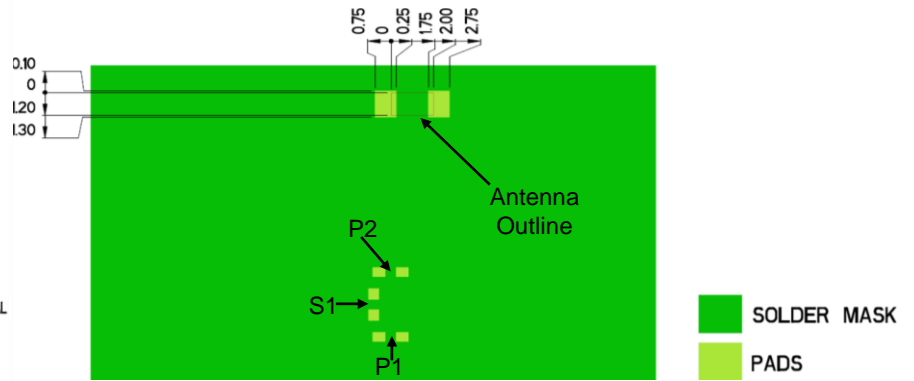
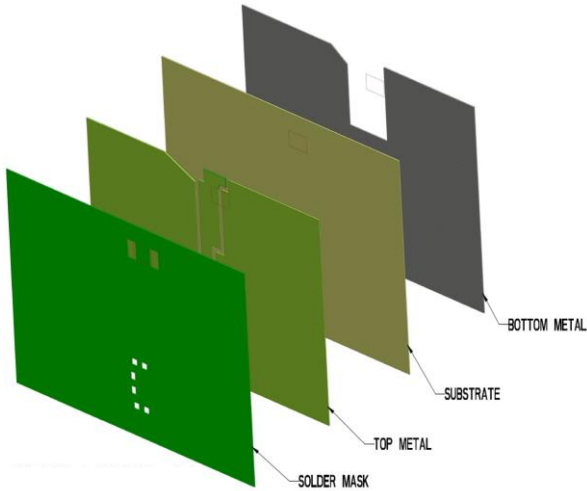




Appendix 1 UWB Ceramic Ethertronics' Embedded Antenna Specifications
Ethertronics produces a wide variety of standard and custom antennas to meet user needs.

Antenna Layout (1001312-04)

Typical layout dimensions (mm)



- Additional VIAS : Diam. 0.2mm to be placed around antenna, (no vias on transmission lines).
- Via holes must be covered by solder mask

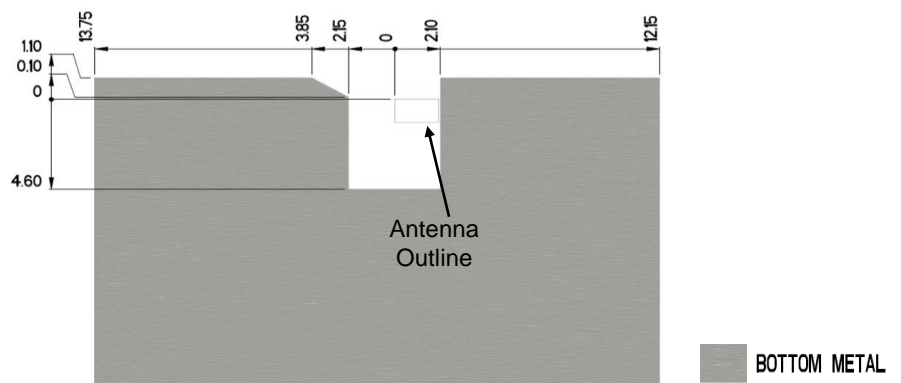
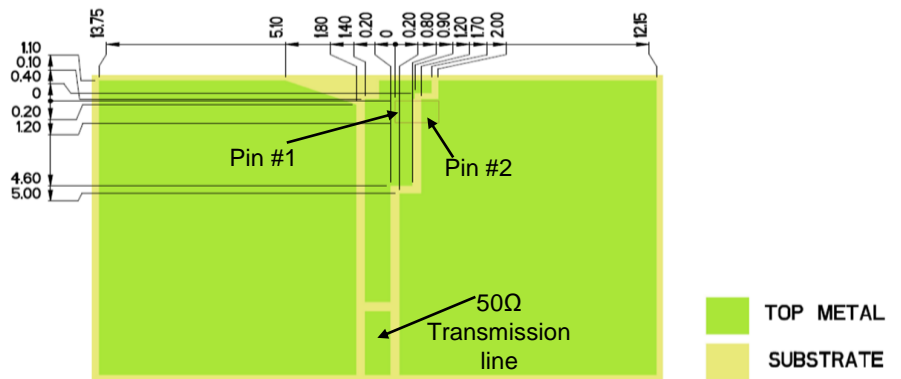
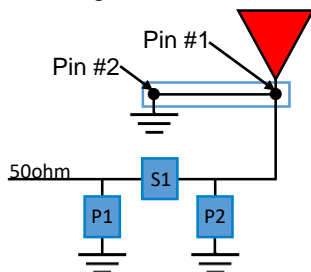
Pin Descriptions

| Pin# | Description |
|------|-------------|
| 1 | Feed |
| 2 | Ground |

Matching Pi Network (Demo Board)

| Component | Value | Tolerance |
|-----------|-------|-----------|
| P1 | DNI | N/A |
| S1 | 0Ω | N/A |
| P2 | DNI | N/A |

*Actual matching values depend on customer design



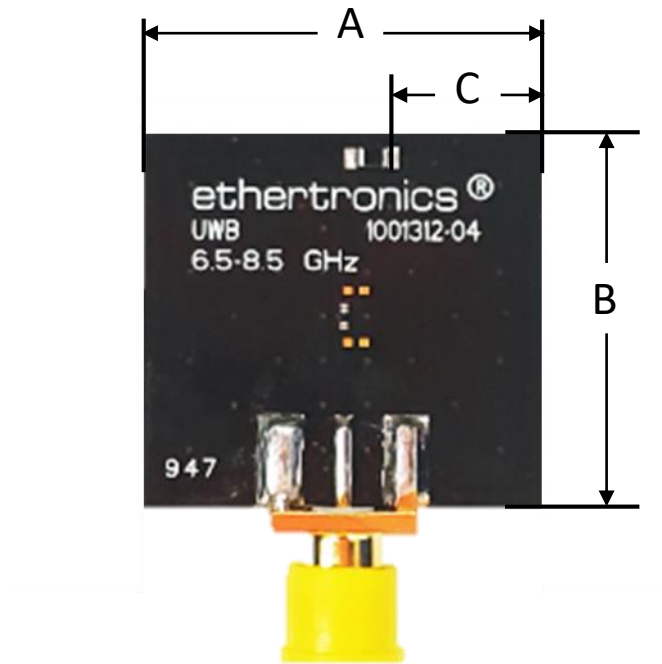


Appendix 1 UWB Ceramic Ethertronics' Embedded Antenna Specifications
Ethertronics produces a wide variety of standard and custom antennas to meet user needs.

Antenna Demo Board

Typical layout dimensions (mm)

| Part Number | A (mm) | B (mm) | C (mm) |
|-------------|-------------|-------------|--------|
| 1001312-04 | 26.0 ± 0.25 | 25.0 ± 0.25 | 10.15 |





**Стандарт
Электрон
Связь**

Мы молодая и активно развивающаяся компания в области поставок электронных компонентов. Мы поставляем электронные компоненты отечественного и импортного производства напрямую от производителей и с крупнейших складов мира.

Благодаря сотрудничеству с мировыми поставщиками мы осуществляем комплексные и плановые поставки широчайшего спектра электронных компонентов.

Собственная эффективная логистика и склад в обеспечивает надежную поставку продукции в точно указанные сроки по всей России.

Мы осуществляем техническую поддержку нашим клиентам и предпродажную проверку качества продукции. На все поставляемые продукты мы предоставляем гарантию .

Осуществляем поставки продукции под контролем ВП МО РФ на предприятия военно-промышленного комплекса России , а также работаем в рамках 275 ФЗ с открытием отдельных счетов в уполномоченном банке. Система менеджмента качества компании соответствует требованиям ГОСТ ISO 9001.

Минимальные сроки поставки, гибкие цены, неограниченный ассортимент и индивидуальный подход к клиентам являются основой для выстраивания долгосрочного и эффективного сотрудничества с предприятиями радиоэлектронной промышленности, предприятиями ВПК и научно-исследовательскими институтами России.

С нами вы становитесь еще успешнее!

Наши контакты:

Телефон: +7 812 627 14 35

Электронная почта: sales@st-electron.ru

Адрес: 198099, Санкт-Петербург,
Промышленная ул, дом № 19, литера Н,
помещение 100-Н Офис 331