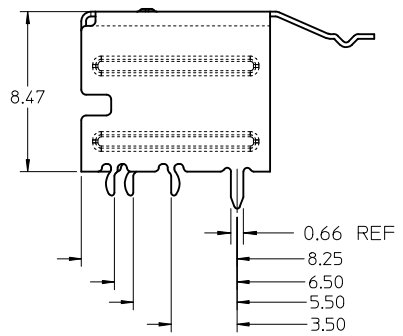
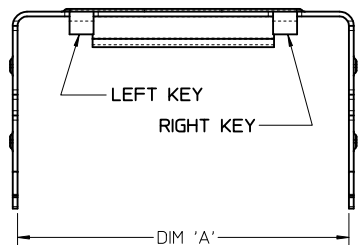
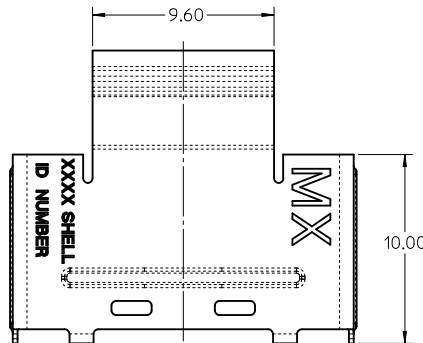
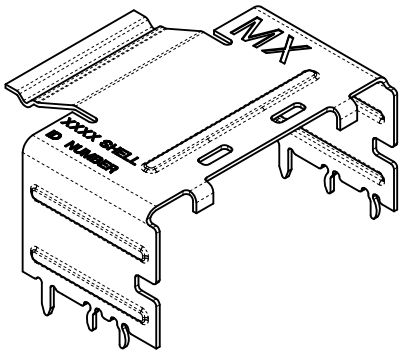


RETENTION FIT SHELL



| ITEM NUMBER | CIRCUIT SIZE | DIM 'A' | KEY |
|-------------|--------------|---------|-----------|
| 76010-5000 | 26 | 13.55 | LEFT |
| 76010-5010 | 26 | 13.55 | RIGHT |
| 76010-5020 | 26 | 13.55 | DUAL |
| 76010-5100 | 36 | 17.55 | LEFT |
| 76010-5110 | 36 | 17.55 | RIGHT |
| 76010-5120 | 36 | 17.55 | DUAL |
| 76010-5030 | 26 | 13.55 | UNIVERSAL |
| 76010-5130 | 36 | 17.55 | UNIVERSAL |
| 76010-5200 | 50 | 23.15 | LEFT |
| 76010-5210 | 50 | 23.15 | RIGHT |
| 76010-5220 | 50 | 23.15 | DUAL |
| 76010-5300 | 68 | 30.35 | LEFT |
| 76010-5310 | 68 | 30.35 | RIGHT |
| 76010-5320 | 68 | 30.35 | DUAL |
| 76010-5230 | 50 | 23.15 | UNIVERSAL |
| 76010-5330 | 68 | 30.35 | UNIVERSAL |

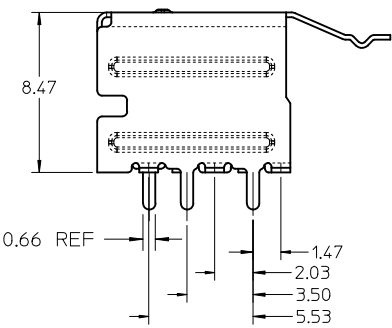
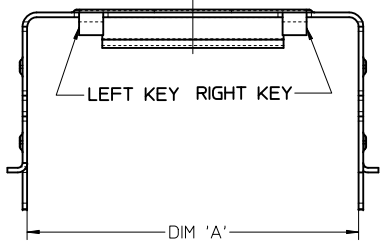
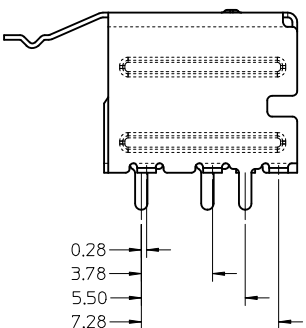
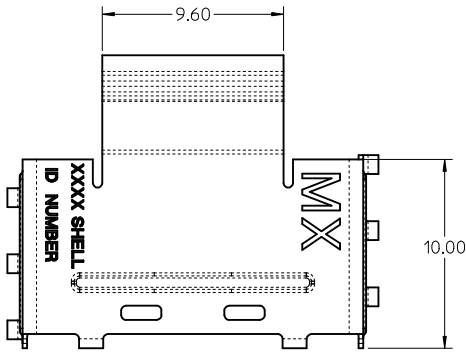
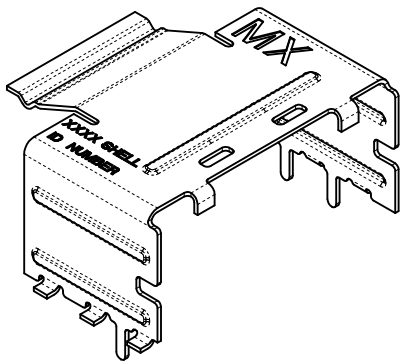
UNIVERSAL = NO KEY

- NOTES:**
- MATERIAL: SILVER NICKEL, THICKNESS: 0.250/0.254
 - TO BE USED WITH CONNECTOR SERIES 75586, CABLE SERIES 79575/74563/79576/74573/79536/74562/74569/74586
 - PACKAGED PER PACKAGING SPECIFICATION PK-76010-001
 - DATE CODE WILL APPEAR ON SHIPPING CARTON ONLY

iPass™ IS A TRADEMARK OF MOLEX

| | | | | | | | | |
|--|-------------------------------|---------------------------------------|-----------------------|-----------------------------------|-------------------------------------|-------------------------------|---|---------------------------|
| ADD REF DIMENSION EC NO: UCP2012-1863 DRW: KLKLANG 2011/12/09 CHKD: MBANAKIS APPR: MBANAKIS 2011/12/09 | QUALITY SYMBOLS ▽=0 ▽=0 | GENERAL TOLERANCES (UNLESS SPECIFIED) | | DIMENSION STYLE MM ONLY | SCALE 5:1 | DESIGN UNITS METRIC | THIRD ANGLE PROJECTION | |
| | | | mm | INCH | DRAWN BY JLSWENSON | DATE 2006/02/16 | I-PASS SHELL RIGHT ANGLE INTERNAL CABLE | |
| | | 4 PLACES ± --- ± --- | 3 PLACES ± 0.13 ± --- | 2 PLACES ± 0.13 ± --- | 1 PLACE ± 0.25 ± --- | CHECKED BY KLKLANG | | |
| | | ANGULAR ±1/2° | | | | APPROVED BY MBANAKIS | DATE 2006/02/16 | MOLEX INCORPORATED |
| DRAFT WHERE APPLICABLE MUST REMAIN WITHIN DIMENSIONS | | | | MATERIAL NO. SEE CHART | DOCUMENT NO. SD-76010-001 | SHEET NO. 1 OF 7 | | |

SMT SHELL



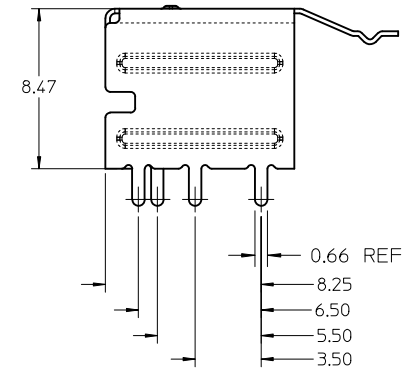
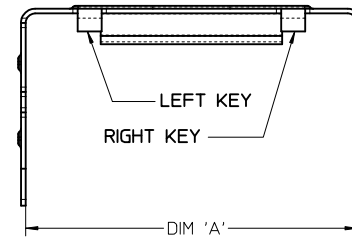
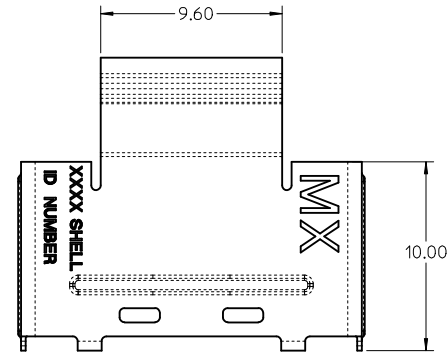
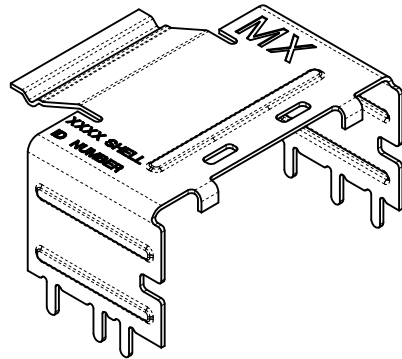
| ITEM NUMBER | CIRCUIT SIZE | DIM 'A' | KEY |
|-------------|--------------|---------|-----------|
| 76010-5001 | 26 | 13.55 | LEFT |
| 76010-5011 | 26 | 13.55 | RIGHT |
| 76010-5021 | 26 | 13.55 | DUAL |
| 76010-5101 | 36 | 17.55 | LEFT |
| 76010-5111 | 36 | 17.55 | RIGHT |
| 76010-5121 | 36 | 17.55 | DUAL |
| 76010-5031 | 26 | 13.55 | UNIVERSAL |
| 76010-5131 | 36 | 17.55 | UNIVERSAL |
| 76010-5201 | 50 | 23.15 | LEFT |
| 76010-5211 | 50 | 23.15 | RIGHT |
| 76010-5221 | 50 | 23.15 | DUAL |
| 76010-5301 | 68 | 30.35 | LEFT |
| 76010-5311 | 68 | 30.35 | RIGHT |
| 76010-5321 | 68 | 30.35 | DUAL |
| 76010-5231 | 50 | 23.15 | UNIVERSAL |
| 76010-5331 | 68 | 30.35 | UNIVERSAL |

UNIVERSAL - NO KEY

iPass™ IS A TRADEMARK OF MOLEX

| SEE SHEET 1 EC NO: UCP2012-1863 DRW:KLANG 2011/12/09 CHKD: APPR:MBANAKIS 2011/12/09 | QUALITY SYMBOLS ▽=0 ▽=0 | GENERAL TOLERANCES (UNLESS SPECIFIED) <table border="1"> <tr><th colspan="2">mm</th><th colspan="2">INCH</th></tr> <tr><td>4 PLACES</td><td>± .---</td><td>± .---</td><td></td></tr> <tr><td>3 PLACES</td><td>± 0.13</td><td>± .---</td><td></td></tr> <tr><td>2 PLACES</td><td>± 0.13</td><td>± .---</td><td></td></tr> <tr><td>1 PLACE</td><td>± 0.25</td><td>± .---</td><td></td></tr> </table> ANGULAR ±1/2° | mm | | INCH | | 4 PLACES | ± .--- | ± .--- | | 3 PLACES | ± 0.13 | ± .--- | | 2 PLACES | ± 0.13 | ± .--- | | 1 PLACE | ± 0.25 | ± .--- | | DIMENSION STYLE MM ONLY DRAWN BY: JLSWENSON DATE: 2006/02/16 CHECKED BY: KLANG DATE: 2006/02/16 APPROVED BY: MBANAKIS DATE: 2006/02/16 MATERIAL NO. | SCALE 5:1 DESIGN UNITS METRIC THIRD ANGLE PROJECTION | TITLE I-PASS SHELL RIGHT ANGLE INTERNAL CABLE | MOLEX MOLEX INCORPORATED | DOCUMENT NO. SD-76010-001 | SHEET NO. 2 OF 7 |
|---|-------------------------------|---|---|--|------|--|----------|--------|--------|--|----------|--------|--------|--|----------|--------|--------|--|---------|--------|--------|--|---|--|---|------------------------------------|------------------------------|---------------------|
| | mm | | INCH | | | | | | | | | | | | | | | | | | | | | | | | | |
| | 4 PLACES | ± .--- | ± .--- | | | | | | | | | | | | | | | | | | | | | | | | | |
| | 3 PLACES | ± 0.13 | ± .--- | | | | | | | | | | | | | | | | | | | | | | | | | |
| 2 PLACES | ± 0.13 | ± .--- | | | | | | | | | | | | | | | | | | | | | | | | | | |
| 1 PLACE | ± 0.25 | ± .--- | | | | | | | | | | | | | | | | | | | | | | | | | | |
| DRAFT WHERE APPLICABLE MUST REMAIN WITHIN DIMENSIONS | | SEE CHART | THIS DRAWING CONTAINS INFORMATION THAT IS PROPRIETARY TO MOLEX INCORPORATED AND SHOULD NOT BE USED WITHOUT WRITTEN PERMISSION | | | | | | | | | | | | | | | | | | | | | | | | | |

THROUGH HOLE SHELL (PART NUMBERS ON SHEET 4)



iPass™ IS A TRADEMARK OF MOLEX

| | | | | | | | | | | |
|---|-------------------------------|---------------------------------------|---|-----------------------------------|-------------------------|--------------------|---|------------------------|---------------------|--|
| SEE SHEET 1 EC NO: UCP2012-1863 DRW:KLANG 2011/12/09 CHKD: APPR:MBANAKIS 2011/12/09 | QUALITY SYMBOLS ▽=0 ▽=0 | GENERAL TOLERANCES (UNLESS SPECIFIED) | | DIMENSION STYLE MM ONLY | | SCALE 5:1 | DESIGN UNITS METRIC | THIRD ANGLE PROJECTION | | |
| | | | mm | INCH | DRAWN BY JLSWENSON | DATE 2006/02/16 | TITLE I-PASS SHELL RIGHT ANGLE INTERNAL CABLE | | | |
| | | 4 PLACES ± --- | ± --- | ± --- | CHECKED BY KLANG | DATE 2006/02/16 | | | | |
| | | 3 PLACES ± 0.13 | ± --- | ± --- | APPROVED BY MBANAKIS | DATE 2006/02/16 | DOCUMENT NO. SD-76010-001 | | SHEET NO. 3 OF 7 | |
| 2 PLACES ± 0.13 | ± --- | ± --- | MATERIAL NO. | | MOLEX INCORPORATED | | | | | |
| 1 PLACE ± 0.25 | ± --- | ± --- | DRAFT WHERE APPLICABLE MUST REMAIN WITHIN DIMENSIONS | | | | | | | |
| ANGULAR ± 1/2° | SEE CHART | | THIS DRAWING CONTAINS INFORMATION THAT IS PROPRIETARY TO MOLEX INCORPORATED AND SHOULD NOT BE USED WITHOUT WRITTEN PERMISSION | | | | | | | |

| ITEM NUMBER | CIRCUIT SIZE | DIM 'A' | DIM 'B' | KEY |
|-------------|--------------|---------|---------|-----------|
| 76010-5002 | 26 | 13.55 | 1.96 | LEFT |
| 76010-5012 | 26 | 13.55 | 1.96 | RIGHT |
| 76010-5022 | 26 | 13.55 | 1.96 | DUAL |
| 76010-5102 | 36 | 17.55 | 1.96 | LEFT |
| 76010-5112 | 36 | 17.55 | 1.96 | RIGHT |
| 76010-5122 | 36 | 17.55 | 1.96 | DUAL |
| 76010-5032 | 26 | 13.55 | 1.96 | UNIVERSAL |
| 76010-5132 | 36 | 17.55 | 1.96 | UNIVERSAL |
| 76010-5103 | 36 | 17.55 | 2.79 | LEFT |
| 76010-5113 | 36 | 17.55 | 2.79 | RIGHT |
| 76010-5123 | 36 | 17.55 | 2.79 | DUAL |
| 76010-5133 | 36 | 17.55 | 2.79 | UNIVERSAL |
| 76010-5104 | 36 | 17.55 | 3.18 | LEFT |
| 76010-5114 | 36 | 17.55 | 3.18 | RIGHT |
| 76010-5124 | 36 | 17.55 | 3.18 | DUAL |
| 76010-5134 | 36 | 17.55 | 3.18 | UNIVERSAL |
| 76010-5141 | 36 | 17.55 | 3.56 | LEFT |
| 76010-5151 | 36 | 17.55 | 3.56 | RIGHT |
| 76010-5161 | 36 | 17.55 | 3.56 | DUAL |
| 76010-5171 | 36 | 17.55 | 3.56 | UNIVERSAL |
| 76010-5202 | 50 | 23.15 | 1.96 | LEFT |
| 76010-5212 | 50 | 23.15 | 1.96 | RIGHT |
| 76010-5222 | 50 | 23.15 | 1.96 | DUAL |
| 76010-5302 | 68 | 30.35 | 1.96 | LEFT |
| 76010-5312 | 68 | 30.35 | 1.96 | RIGHT |
| 76010-5322 | 68 | 30.35 | 1.96 | DUAL |
| 76010-5232 | 50 | 23.15 | 1.96 | UNIVERSAL |
| 76010-5332 | 68 | 30.35 | 1.96 | UNIVERSAL |

| ITEM NUMBER | CIRCUIT SIZE | DIM 'A' | DIM 'B' | KEY |
|-------------|--------------|---------|---------|-----------|
| 76010-5003 | 26 | 13.55 | 2.79 | LEFT |
| 76010-5013 | 26 | 13.55 | 2.79 | RIGHT |
| 76010-5023 | 26 | 13.55 | 2.79 | DUAL |
| 76010-5033 | 26 | 13.55 | 2.79 | UNIVERSAL |
| 76010-5004 | 26 | 13.55 | 3.18 | LEFT |
| 76010-5014 | 26 | 13.55 | 3.18 | RIGHT |
| 76010-5024 | 26 | 13.55 | 3.18 | DUAL |
| 76010-5034 | 26 | 13.55 | 3.18 | UNIVERSAL |
| 76010-5203 | 50 | 23.15 | 2.79 | LEFT |
| 76010-5213 | 50 | 23.15 | 2.79 | RIGHT |
| 76010-5223 | 50 | 23.15 | 2.79 | DUAL |
| 76010-5233 | 50 | 23.15 | 2.79 | UNIVERSAL |
| 76010-5204 | 50 | 23.15 | 3.18 | LEFT |
| 76010-5214 | 50 | 23.15 | 3.18 | RIGHT |
| 76010-5224 | 50 | 23.15 | 3.18 | DUAL |
| 76010-5234 | 50 | 23.15 | 3.18 | UNIVERSAL |
| 76010-5303 | 68 | 30.35 | 2.79 | LEFT |
| 76010-5313 | 68 | 30.35 | 2.79 | RIGHT |
| 76010-5323 | 68 | 30.35 | 2.79 | DUAL |
| 76010-5333 | 68 | 30.35 | 2.79 | UNIVERSAL |
| 76010-5304 | 68 | 30.35 | 3.18 | LEFT |
| 76010-5314 | 68 | 30.35 | 3.18 | RIGHT |
| 76010-5324 | 68 | 30.35 | 3.18 | DUAL |
| 76010-5334 | 68 | 30.35 | 3.18 | UNIVERSAL |

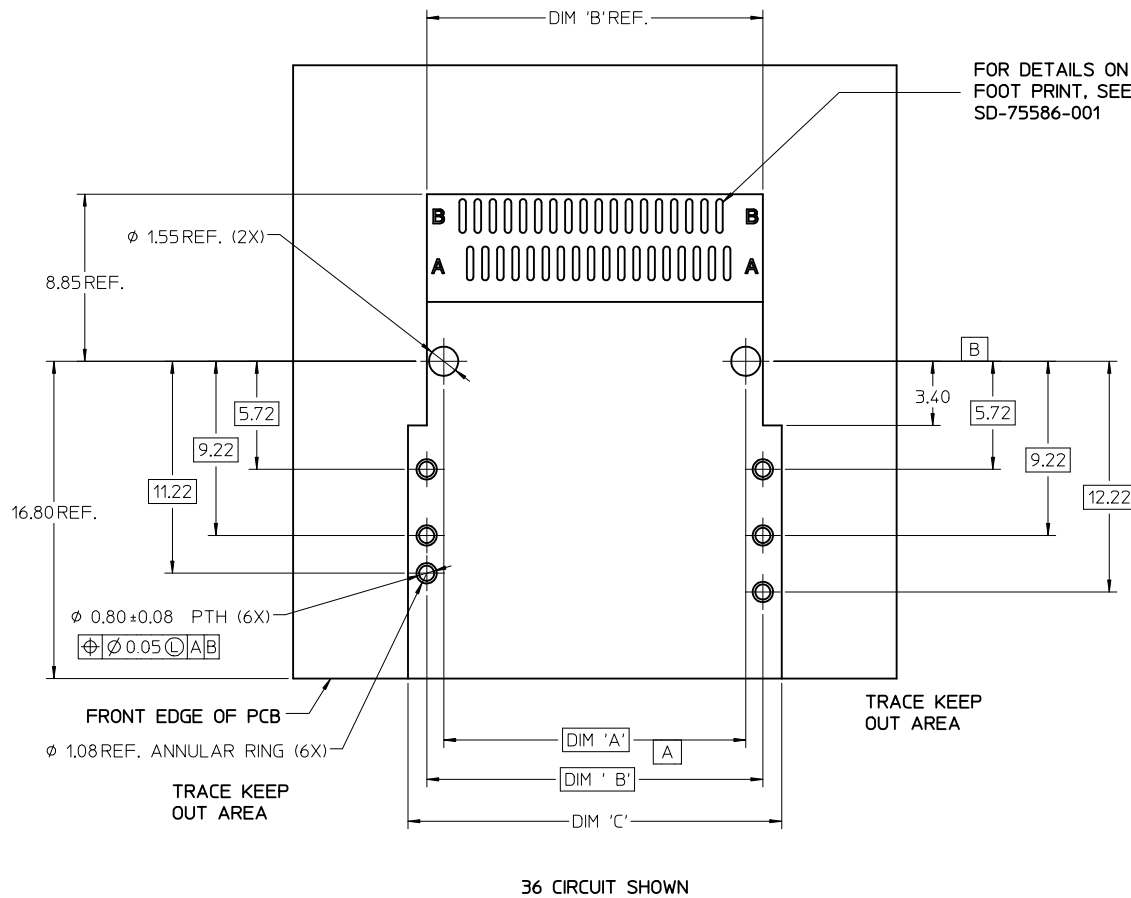
UNIVERSAL = NO KEY

THROUGH HOLE SHELL (PART NUMBERS)

iPass™ IS A TRADEMARK OF MOLEX

| SEE SHEET 1 EC NO: UCP2012-1863 DRW:KLANG 2011/12/09 CHKD: APPR:MBANAKIS 2011/12/09 | QUALITY SYMBOLS | GENERAL TOLERANCES (UNLESS SPECIFIED) | | DIMENSION STYLE MM ONLY | SCALE 5:1 | DESIGN UNITS METRIC | THIRD ANGLE PROJECTION | | | | | | | | | | | | | | | | |
|---|---------------------|--|-------|---|---------------------|---|------------------------|-------|-------|----------|--------|-------|----------|--------|-------|---------|--------|-------|---------------------------------------|--|---|--|--|
| | | <table border="1"> <tr><th></th><th>mm</th><th>INCH</th></tr> <tr><td>4 PLACES</td><td>± ---</td><td>± ---</td></tr> <tr><td>3 PLACES</td><td>± 0.13</td><td>± ---</td></tr> <tr><td>2 PLACES</td><td>± 0.13</td><td>± ---</td></tr> <tr><td>1 PLACE</td><td>± 0.25</td><td>± ---</td></tr> </table> | | | mm | INCH | 4 PLACES | ± --- | ± --- | 3 PLACES | ± 0.13 | ± --- | 2 PLACES | ± 0.13 | ± --- | 1 PLACE | ± 0.25 | ± --- | DRAWN BY DATE JLSWENSON 2006/02/16 | | TITLE I-PASS SHELL RIGHT ANGLE INTERNAL CABLE | | |
| | | | mm | INCH | | | | | | | | | | | | | | | | | | | |
| | | 4 PLACES | ± --- | ± --- | | | | | | | | | | | | | | | | | | | |
| 3 PLACES | ± 0.13 | ± --- | | | | | | | | | | | | | | | | | | | | | |
| 2 PLACES | ± 0.13 | ± --- | | | | | | | | | | | | | | | | | | | | | |
| 1 PLACE | ± 0.25 | ± --- | | | | | | | | | | | | | | | | | | | | | |
| ANGULAR ±1/2° | | CHECKED BY DATE KLANG 2006/02/16 | | APPROVED BY DATE MBANAKIS 2006/02/16 | | | | | | | | | | | | | | | | | | | |
| DRAFT WHERE APPLICABLE MUST REMAIN WITHIN DIMENSIONS | | SEE CHART | | MATERIAL NO. DOCUMENT NO. | | MOLEX INCORPORATED SD-76010-001 | | | | | | | | | | | | | | | | | |
| SIZE | | THIS DRAWING CONTAINS INFORMATION THAT IS PROPRIETARY TO MOLEX INCORPORATED AND SHOULD NOT BE USED WITHOUT WRITTEN PERMISSION | | | | | | | | | | | | | | | | | | | | | |

RIGHT ANGLE RETENTION FIT AND THROUGH HOLE SHELL PCB FOOT PRINT



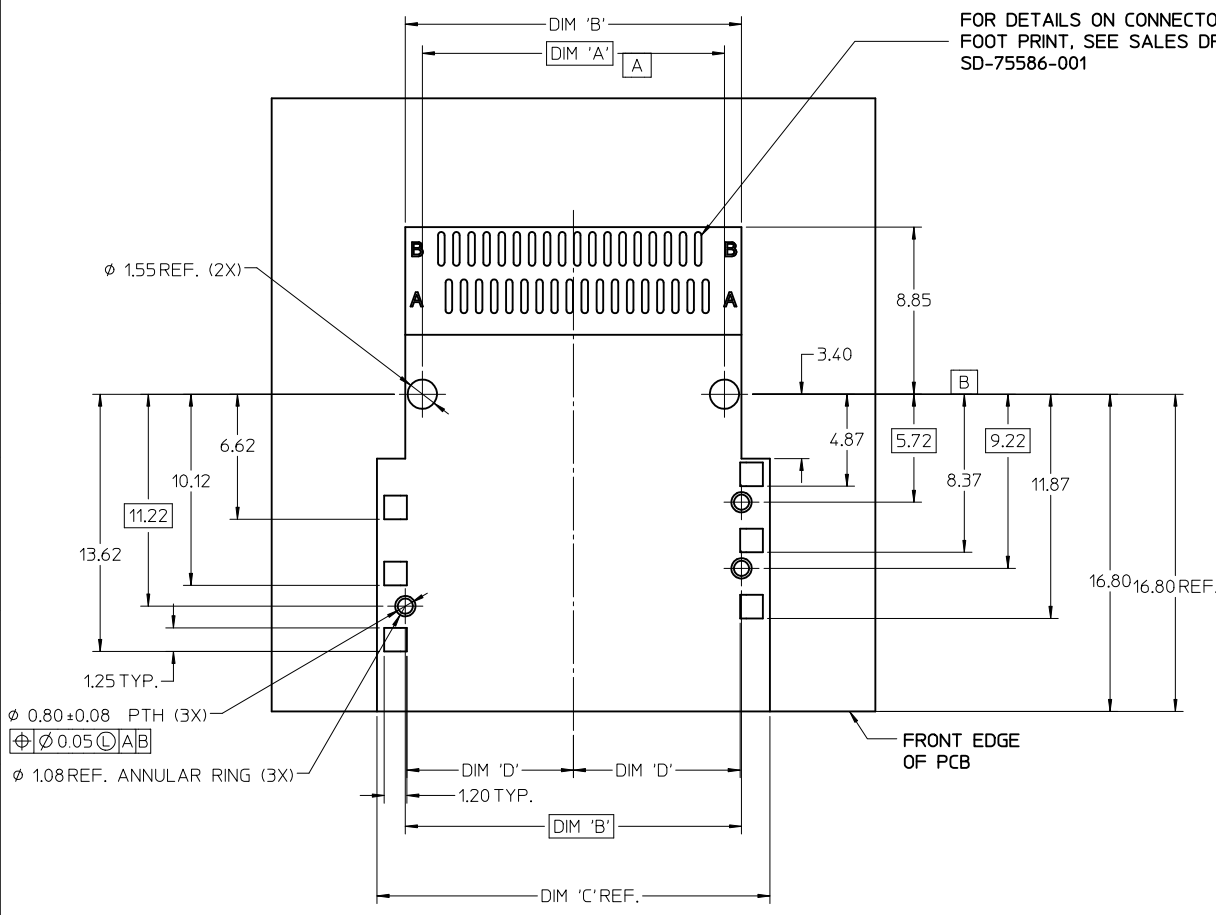
FOR DETAILS ON CONNECTOR
FOOT PRINT, SEE SALES DRAWING
SD-75586-001

| CIRCUIT SIZE | CONNECTOR PEG TO PEG | | |
|-----------------|-------------------------|---------|---------|
| | DIM 'A' | DIM 'B' | DIM 'C' |
| 26 | 12.00 | 13.80 | 16.80 |
| 36 | 16.00 | 17.80 | 20.80 |
| 50 | 21.60 | 23.40 | 25.40 |
| 68 | 28.80 | 30.60 | 32.60 |

iPass™ IS A TRADEMARK OF MOLEX

| SEE SHEET 1 EC NO: UCP2012-1863 DRW: KLANG 2011/12/09 CHKD: APPR: MBANAKIS 2011/12/09 | QUALITY SYMBOLS ▽=0 ▽=0 | GENERAL TOLERANCES (UNLESS SPECIFIED) | | DIMENSION STYLE MM ONLY | | SCALE 5:1 | DESIGN UNITS METRIC | THIRD ANGLE PROJECTION | | | | | | | | | | | | | | | | |
|---|-------------------------------|--|-------|-----------------------------------|---|---------------------|------------------------|---|-------|----------|--------|-------|----------|--------|-------|---------|--------|-------|-----------------------|--|--------------------|---|--|--|
| | | <table border="1"> <tr> <th></th> <th>mm</th> <th>INCH</th> </tr> <tr> <td>4 PLACES</td> <td>± ---</td> <td>± ---</td> </tr> <tr> <td>3 PLACES</td> <td>± 0.13</td> <td>± ---</td> </tr> <tr> <td>2 PLACES</td> <td>± 0.13</td> <td>± ---</td> </tr> <tr> <td>1 PLACE</td> <td>± 0.25</td> <td>± ---</td> </tr> </table> | | | mm | INCH | 4 PLACES | ± --- | ± --- | 3 PLACES | ± 0.13 | ± --- | 2 PLACES | ± 0.13 | ± --- | 1 PLACE | ± 0.25 | ± --- | DRAWN BY JLSWENSON | | DATE 2006/02/16 | TITLE I-PASS SHELL RIGHT ANGLE INTERNAL CABLE | | |
| | | | mm | INCH | | | | | | | | | | | | | | | | | | | | |
| | | 4 PLACES | ± --- | ± --- | | | | | | | | | | | | | | | | | | | | |
| 3 PLACES | ± 0.13 | ± --- | | | | | | | | | | | | | | | | | | | | | | |
| 2 PLACES | ± 0.13 | ± --- | | | | | | | | | | | | | | | | | | | | | | |
| 1 PLACE | ± 0.25 | ± --- | | | | | | | | | | | | | | | | | | | | | | |
| ANGULAR ±1/2° | | CHECKED BY KLANG | | DATE 2006/02/16 | | | | | | | | | | | | | | | | | | | | |
| DRAFT WHERE APPLICABLE MUST REMAIN WITHIN DIMENSIONS | | APPROVED BY MBANAKIS | | DATE 2006/02/16 | MOLEX MOLEX INCORPORATED DOCUMENT NO. SD-76010-001 | | | | | | | | | | | | | | | | | | | |
| C1 | REV | SEE CHART | | MATERIAL NO. | | SHEET NO. 5 OF 7 | | THIS DRAWING CONTAINS INFORMATION THAT IS PROPRIETARY TO MOLEX INCORPORATED AND SHOULD NOT BE USED WITHOUT WRITTEN PERMISSION | | | | | | | | | | | | | | | | |

RIGHT ANGLE SMT SHELL PCB FOOT PRINT



| CIRCUIT SIZE | DIMENSIONS | | | |
|--------------|------------|---------|---------|---------|
| | DIM 'A' | DIM 'B' | DIM 'C' | DIM 'D' |
| 26 | 12.00 | 13.80 | 16.80 | 6.825 |
| 36 | 16.00 | 17.80 | 20.80 | 8.825 |
| 50 | 21.60 | 23.40 | 26.40 | 11.625 |
| 68 | 28.80 | 30.60 | 33.60 | 15.225 |

iPass™ IS A TRADEMARK OF MOLEX

| | | | | | | | | | | | | | | | | | | | | | | | | |
|--|-----------------------|--|---|-------|-------------------------------------|----------|-------|-------|----------|--------|-------|----------|--------|-------|---------|--------|-------|----------------|--|--|-----------------------------------|---------------------|-------------------------------|------------------------|
| SEE SHEET 1 EC NO: UCP2012-1863 DRW: KLANG 2011/12/09 CHKD: MBANAKIS APPR: MBANAKIS 2011/12/09 | QUALITY SYMBOLS | GENERAL TOLERANCES (UNLESS SPECIFIED) <table border="1" style="font-size: small;"> <tr><td></td><td>mm</td><td>INCH</td></tr> <tr><td>4 PLACES</td><td>± ---</td><td>± ---</td></tr> <tr><td>3 PLACES</td><td>± 0.13</td><td>± ---</td></tr> <tr><td>2 PLACES</td><td>± 0.13</td><td>± ---</td></tr> <tr><td>1 PLACE</td><td>± 0.25</td><td>± ---</td></tr> <tr><td colspan="3" style="text-align: center;">ANGULAR ± 1/2°</td></tr> </table> | | mm | INCH | 4 PLACES | ± --- | ± --- | 3 PLACES | ± 0.13 | ± --- | 2 PLACES | ± 0.13 | ± --- | 1 PLACE | ± 0.25 | ± --- | ANGULAR ± 1/2° | | | DIMENSION STYLE MM ONLY | SCALE 5:1 | DESIGN UNITS METRIC | THIRD ANGLE PROJECTION |
| | | | mm | INCH | | | | | | | | | | | | | | | | | | | | |
| | 4 PLACES | | ± --- | ± --- | | | | | | | | | | | | | | | | | | | | |
| | 3 PLACES | | ± 0.13 | ± --- | | | | | | | | | | | | | | | | | | | | |
| 2 PLACES | ± 0.13 | ± --- | | | | | | | | | | | | | | | | | | | | | | |
| 1 PLACE | ± 0.25 | ± --- | | | | | | | | | | | | | | | | | | | | | | |
| ANGULAR ± 1/2° | | | | | | | | | | | | | | | | | | | | | | | | |
| ▽=0 ▽=0 | DRAWN BY JLSWENSON | DATE 2006/02/16 | TITLE I-PASS SHELL RIGHT ANGLE INTERNAL CABLE | | | | | | | | | | | | | | | | | | | | | |
| C1 | CHECKED BY KLANG | DATE 2006/02/16 | APPROVED BY MBANAKIS | | | | | | | | | | | | | | | | | | | | | |
| REV | MATERIAL NO. | | DATE 2006/02/16 | | DOCUMENT NO. SD-76010-001 | | | | | | | | | | | | | | | | | | | |

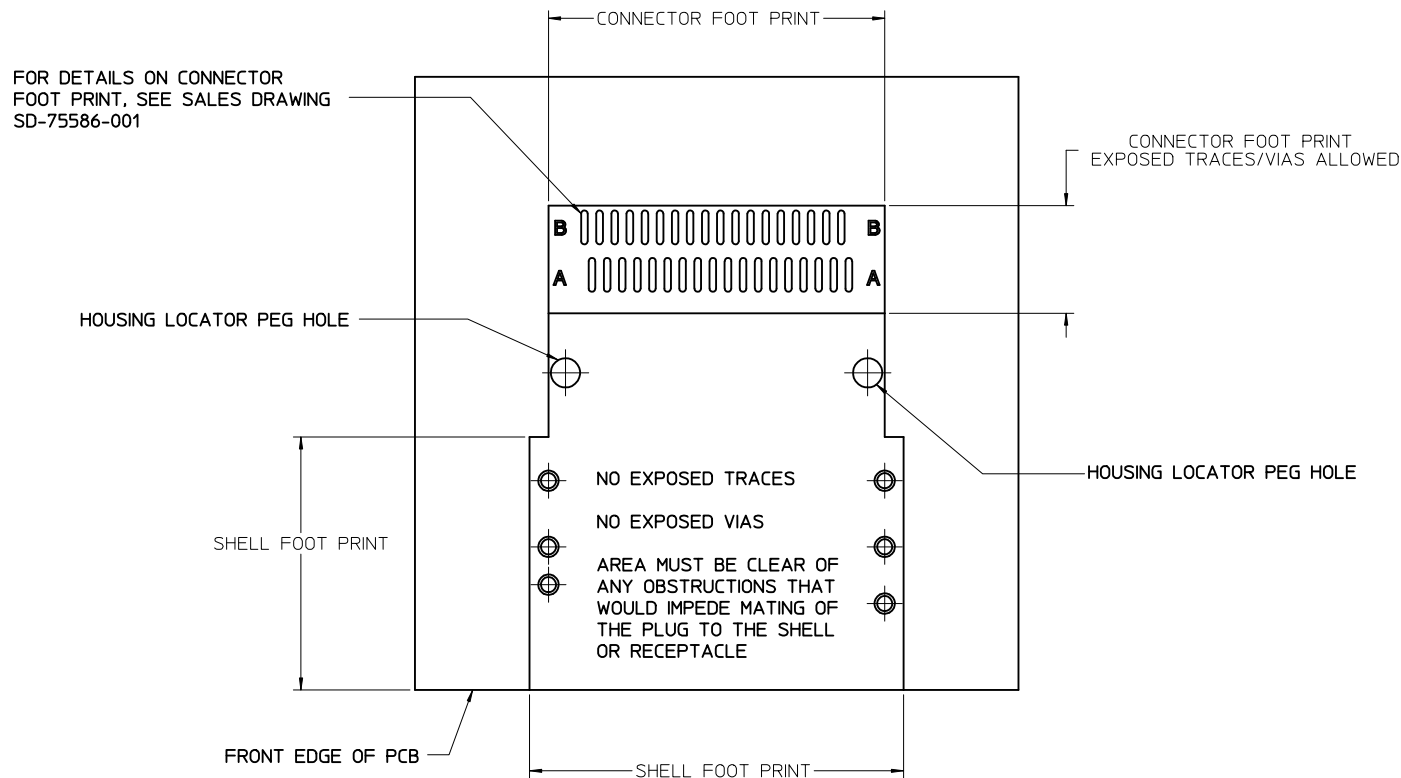
DRAFT WHERE APPLICABLE MUST REMAIN WITHIN DIMENSIONS

SEE CHART

SHEET NO.
6 OF 7

THIS DRAWING CONTAINS INFORMATION THAT IS PROPRIETARY TO MOLEX INCORPORATED AND SHOULD NOT BE USED WITHOUT WRITTEN PERMISSION

RIGHT ANGLE SHELL PCB FOOT PRINT DESCRIPTIONS



36 CIRCUIT SHOWN

NOTE: IF RECEPTACLE AND SHELL ARE NOT PLACED AT EDGE OF PCB AS SHOWN, ADDITIONAL CLEARANCE IS NEEDED FOR BODY OF PLUG AND CABLE

iPass™ IS A TRADEMARK OF MOLEX

| | | | | | | | | | |
|---|-------------------------------|---------------------------------------|-----------------------|---|----------------------|---|------------------------|----------------------------------|--|
| SEE SHEET 1 EC NO: UCP2012-1863 DRW: KLANG 2011/12/09 CHKD: MBANAKIS APPR: MBANAKIS 2011/12/09 | QUALITY SYMBOLS ▽=0 ▽=0 | GENERAL TOLERANCES (UNLESS SPECIFIED) | | DIMENSION STYLE MM ONLY | SCALE 5:1 | DESIGN UNITS METRIC | THIRD ANGLE PROJECTION | | |
| | | | | mm | INCH | TITLE I-PASS SHELL RIGHT ANGLE INTERNAL CABLE | | | |
| | | 4 PLACES ± --- ± --- | 3 PLACES ± 0.13 ± --- | 2 PLACES ± 0.13 ± --- | 1 PLACE ± 0.25 ± --- | DRAWN BY DATE JLSWENSON 2006/02/16 | | | |
| | | ANGULAR ± 1/2° | | | | CHECKED BY DATE KLANG 2006/02/16 | | | |
| DRAFT WHERE APPLICABLE MUST REMAIN WITHIN DIMENSIONS | | | | APPROVED BY DATE MBANAKIS 2006/02/16 | | | | MATERIAL NO. SEE CHART | |
| SIZE C | | | | DOCUMENT NO. SD-76010-001 | | | | SHEET NO. 7 OF 7 | |
| THIS DRAWING CONTAINS INFORMATION THAT IS PROPRIETARY TO MOLEX INCORPORATED AND SHOULD NOT BE USED WITHOUT WRITTEN PERMISSION | | | | | | | | | |



Стандарт Электрон Связь

Мы молодая и активно развивающаяся компания в области поставок электронных компонентов. Мы поставляем электронные компоненты отечественного и импортного производства напрямую от производителей и с крупнейших складов мира.

Благодаря сотрудничеству с мировыми поставщиками мы осуществляем комплексные и плановые поставки широчайшего спектра электронных компонентов.

Собственная эффективная логистика и склад в обеспечивает надежную поставку продукции в точно указанные сроки по всей России.

Мы осуществляем техническую поддержку нашим клиентам и предпродажную проверку качества продукции. На все поставляемые продукты мы предоставляем гарантию .

Осуществляем поставки продукции под контролем ВП МО РФ на предприятия военно-промышленного комплекса России , а также работаем в рамках 275 ФЗ с открытием отдельных счетов в уполномоченном банке. Система менеджмента качества компании соответствует требованиям ГОСТ ISO 9001.

Минимальные сроки поставки, гибкие цены, неограниченный ассортимент и индивидуальный подход к клиентам являются основой для выстраивания долгосрочного и эффективного сотрудничества с предприятиями радиоэлектронной промышленности, предприятиями ВПК и научно-исследовательскими институтами России.

С нами вы становитесь еще успешнее!

Наши контакты:

Телефон: +7 812 627 14 35

Электронная почта: sales@st-electron.ru

Адрес: 198099, Санкт-Петербург,
Промышленная ул, дом № 19, литера Н,
помещение 100-Н Офис 331