

| ZONE | REV | SCR NUMBER | DESCRIPTION | BY | DATE | APPROVED |
|------|-----|-------------------|-------------------|--------|------------|-----------|
| ALL | A | AASY-70UL9B.VER01 | NEW RELEASE | HCL-GM | 04/16/2009 | A.ASTBURY |
| | B | AASY-868QB.VER01 | ADDED XTALIC PN'S | HCL-GM | 06/10/2010 | D.SMITH |

9 5 1 - 4 X 0 C - X X X

XCede BACKPLANE MODULE MALE STANDARD LOAD

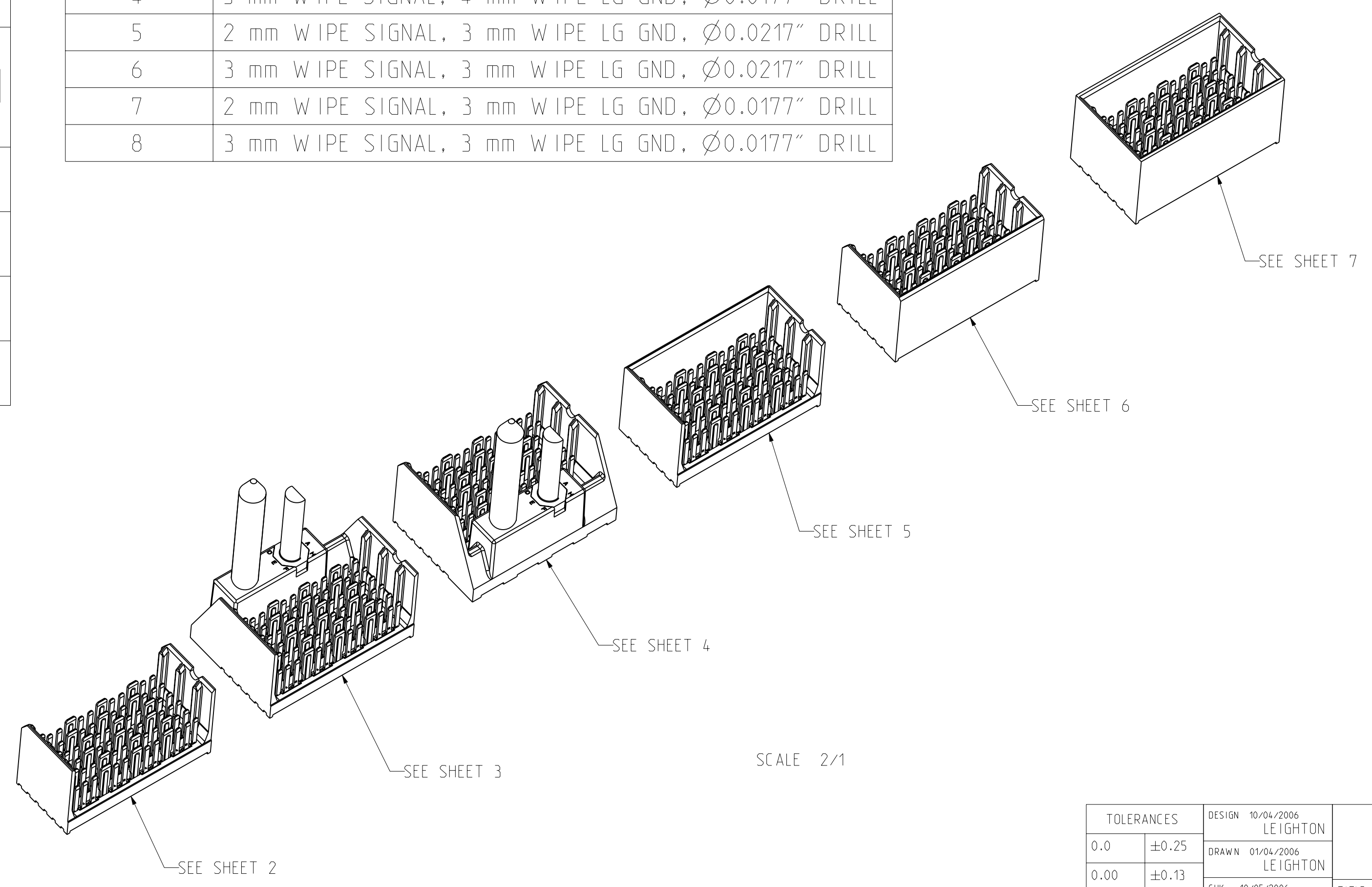
4 PAIR
6-POSITION

| PLATING ④ | |
|-----------|--|
| LETTER | DESCRIPTION |
| B | Ni SULFAMATE, STANDARD GOLD, LEADED |
| C | Ni SULFAMATE, HIGH GOLD, LEADED |
| D | Ni SULFAMATE, STANDARD GOLD, LEAD-FREE |
| E | Ni SULFAMATE, HIGH GOLD, LEAD-FREE |
| F | NANO Ni, STANDARD GOLD, LEADED |
| G | NANO Ni, HIGH GOLD, LEADED |
| H | NANO Ni, STANDARD GOLD, LEAD-FREE |
| J | NANO Ni, HIGH GOLD, LEAD-FREE |

| NUMBER | PIN STYLE, HEIGHT |
|--------|-----------------------------------|
| 0 | GUIDE PIN MACHINED, 31.6mm / NONE |
| 1 | GUIDE PIN ROLLED, 31.6mm |
| 4 | GUIDE PIN MACHINED, 25.7mm |
| 5 | GUIDE PIN ROLLED, 25.7mm |

| NUMBER | SIGNAL & LG. GROUND WIPE LENGTH, COMPLIANT PIN SIZE |
|--------|---|
| 1 | 2 mm WIPE SIGNAL, 4 mm WIPE LG GND, Ø0.0217" DRILL |
| 2 | 3 mm WIPE SIGNAL, 4 mm WIPE LG GND, Ø0.0217" DRILL |
| 3 | 2 mm WIPE SIGNAL, 4 mm WIPE LG GND, Ø0.0177" DRILL |
| 4 | 3 mm WIPE SIGNAL, 4 mm WIPE LG GND, Ø0.0177" DRILL |
| 5 | 2 mm WIPE SIGNAL, 3 mm WIPE LG GND, Ø0.0217" DRILL |
| 6 | 3 mm WIPE SIGNAL, 3 mm WIPE LG GND, Ø0.0217" DRILL |
| 7 | 2 mm WIPE SIGNAL, 3 mm WIPE LG GND, Ø0.0177" DRILL |
| 8 | 3 mm WIPE SIGNAL, 3 mm WIPE LG GND, Ø0.0177" DRILL |

| | LETTER | | | | | | | | | |
|--|------------------------|---------------|---|---|---|---|---|---|---|---|
| LEFT POLARIZING GUIDANCE (SEE SHEET 3) | N | J (NO KEY) | A | B | C | D | E | F | G | H |
| | NO KEY NO GUIDE PIN | | | | | | | | | |
| RIGHT POLARIZING GUIDANCE (SEE SHEET 4) | Z | Y (NO KEY) | P | Q | R | S | T | U | V | W |
| | NO KEY NO GUIDE PIN | | | | | | | | | |
| OPEN (SEE SHEET 2) | O (ZERO) | | | | | | | | | |
| LEFT WALL (SEE SHEET 5) | L | | | | | | | | | |
| RIGHT WALL (SEE SHEET 6) | M | | | | | | | | | |
| TWO WALL (SEE SHEET 7) | 1 | | | | | | | | | |



- NOTES:
- REFER TO TB-2150 FOR XCede PRODUCT SPECIFICATIONS.
 - ② NOTCH DESIGNATES "ROW A" SIDE OF SHROUD. NOTCH FEATURE ON OPPOSITE SIDE FROM PART MARKING.
 - PART MARKING AS FOLLOWS:
 LINE 1: "ATCS" AND DATECODE (ATCS YYWW).
 LINE 2: MODULE PART NUMBER (951-####-###).
 LINE 3: WORK ORDER NUMBER (#####).
 WHERE "*" DENOTES MANUFACTURING LOCATION.
 - ④ PLATING THICKNESS OF SIGNAL CONTACT AND GROUND CONTACT IS DETERMINED BY PLATING CODE. SEE PART NUMBER TREE SHEET 1.
 - REPAIR PROCEDURE FOR MODULE. SEE TB-2210.
 - ⑤ SEE TB-2149 FOR ROUTING GUIDELINES & PTH REQ'S.
 - ⑦ SEE DOC C190-1001-000 FOR TOOLING KEEPOUT ZONES.
 - ⑧ BACKPLANE DATUM REFERENCE.
 - ⑨ OPTIONAL HOLE/MOUNTING SCREW LOCATION FOR GROUNDED PIN OR ADDITIONAL GUIDE PIN SUPPORT. REFER TO TB-2211 FOR PROPER GUIDE PIN SELECTION AND DRAWING C942-4010-000 FOR OPTIONAL HOLE DETAILS. ONLY APPLIES FOR MACHINED GUIDE PIN APPLICATIONS.
 - DIMENSIONS APPLY FOR BOTH COMPLIANT PIN SIZES.

INTERPRET PER ASME Y14.5M
CODE IDENT 31413

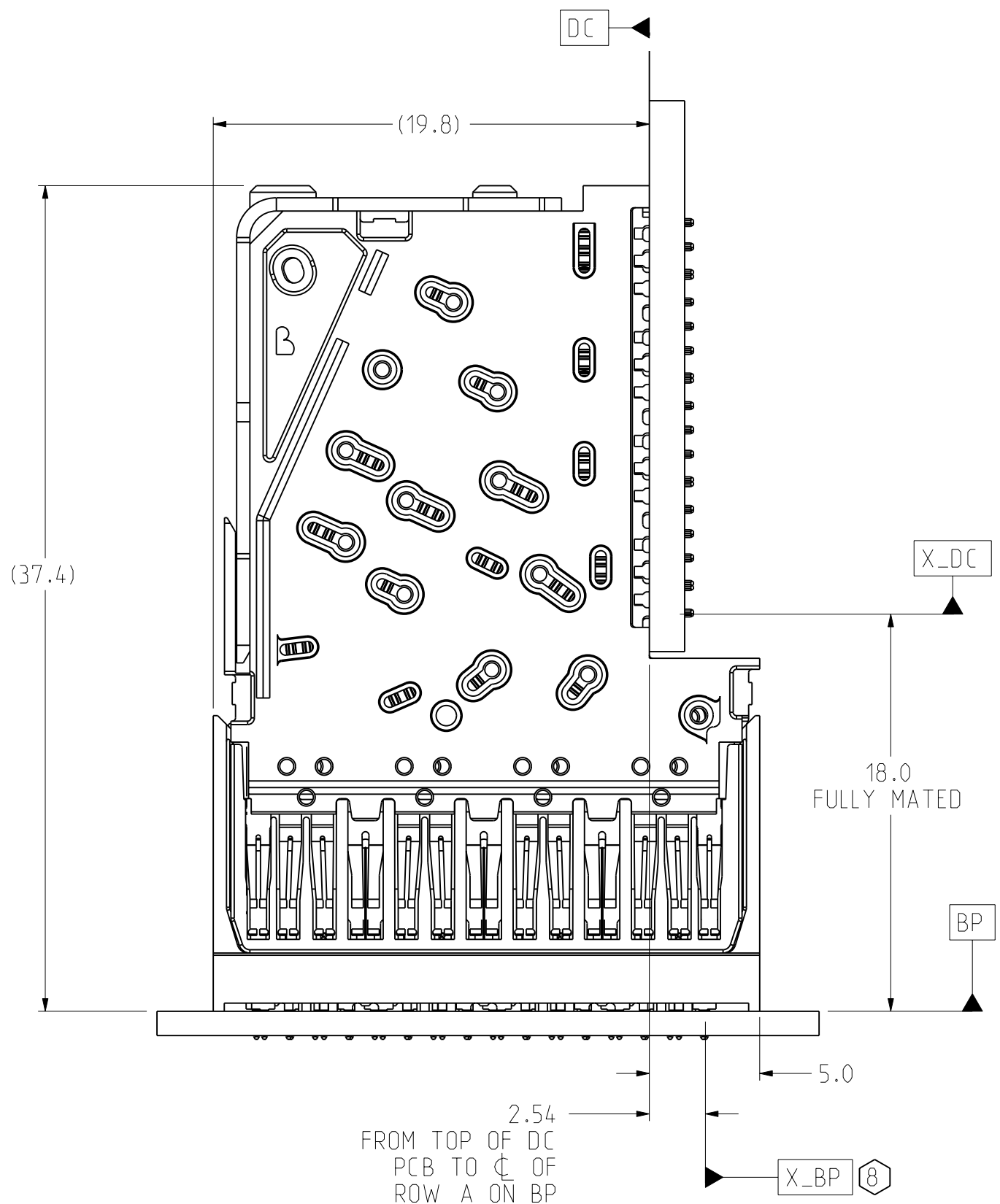
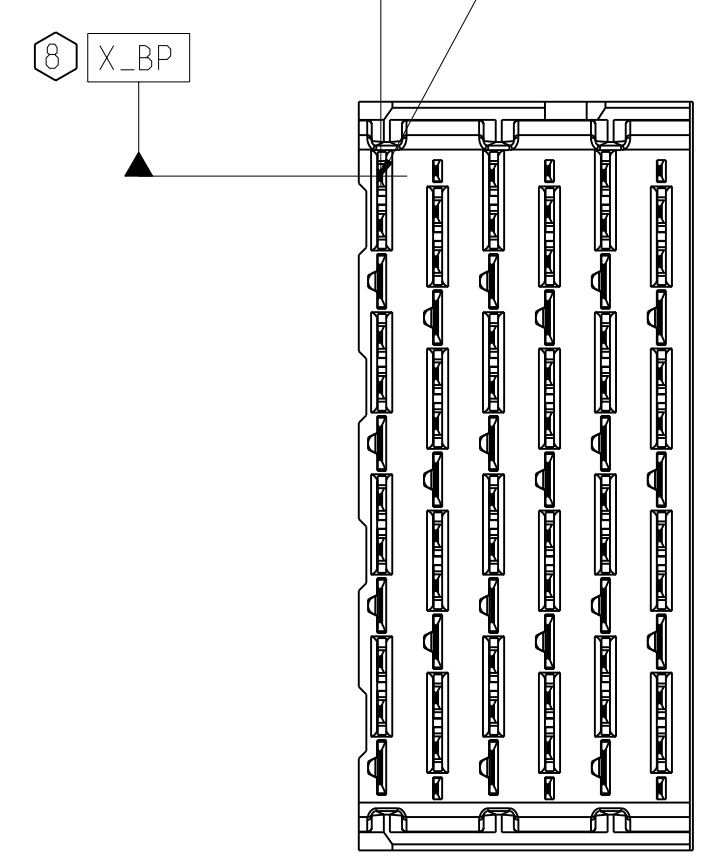
| TOLERANCES | DESIGN | DATE | Amphenol TCS A Division of Amphenol Corporation 200 Innovative Way, Nashua, NH 03062 803.879.3000 | |
|---|--------|------------|---|--|
| 0.0 | ±0.25 | 10/04/2006 | LEIGHTON | TITLE BACKPLANE MODULES, VERTICAL MALE HEADER XCede, 4 PAIR 6 POSITION |
| 0.00 | ±0.13 | 01/04/2006 | LEIGHTON | |
| 0.000 | ± | 10/05/2006 | A.PFAHNL | |
| ANGLES | ± 3° | 10/06/2006 | A.PFAHNL | |
| UNLESS OTHERWISE SPECIFIED DIMENSIONS ARE IN MM. DECIMAL MARKER IS PERIOD | | | PART NO. SEE PN TREE SHEET 1 | |
| CUSTOMER USE DRAWING | | | DRAWING NO. C951-400C-500 | |
| | | | ProE ASSEM C951-4-BP4 C951-400C-500.drw | |
| SIZE | D | SCALE | 4/1 | SHEET 1 OF 8 |

DRW NO. C951-400C-500

SH 1 REV B

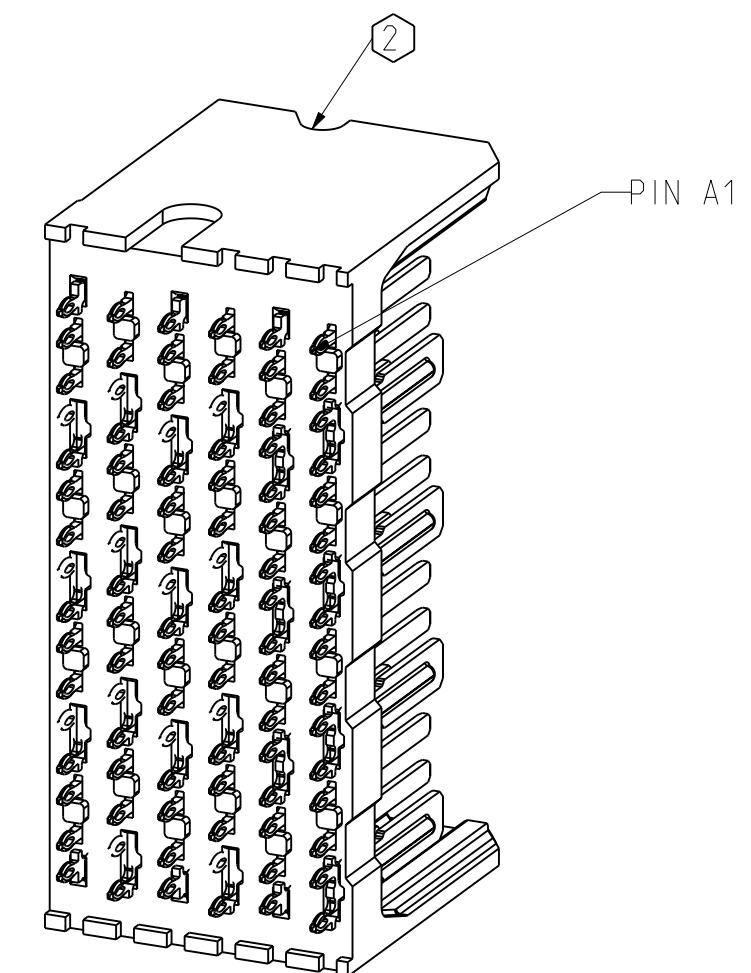
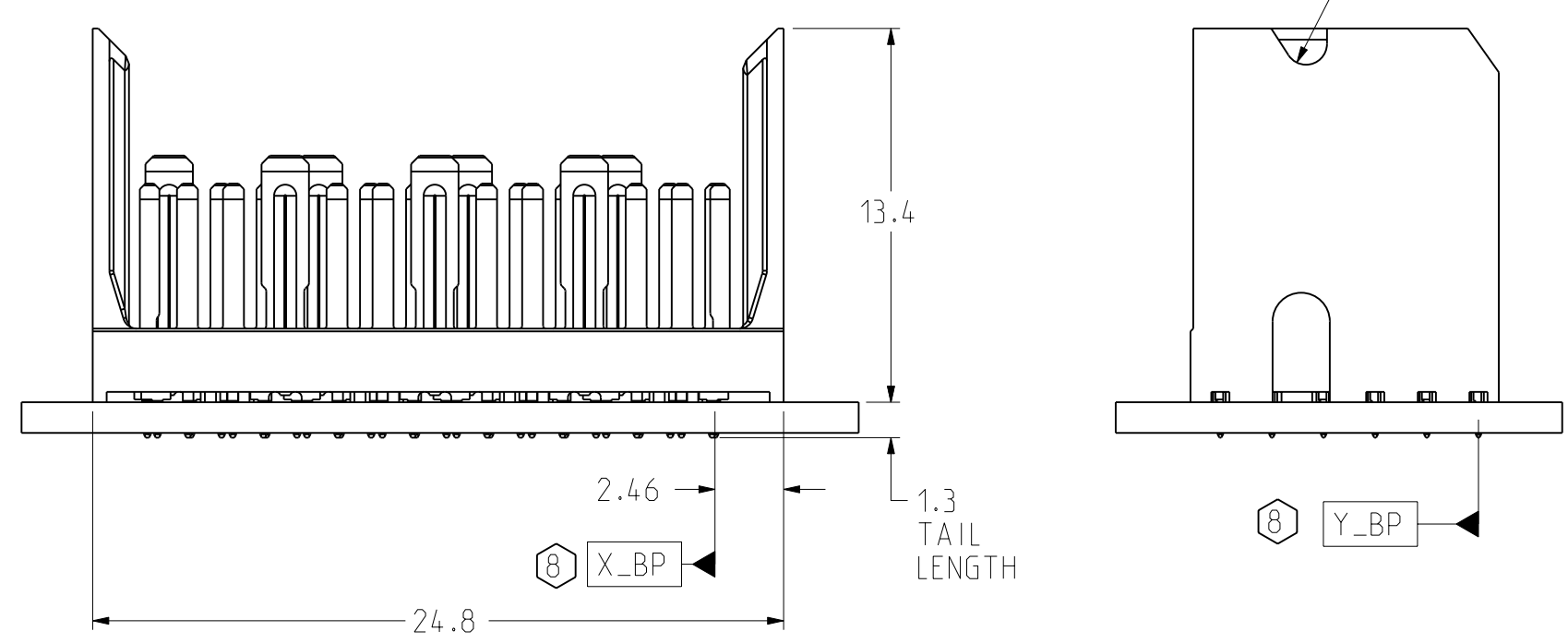
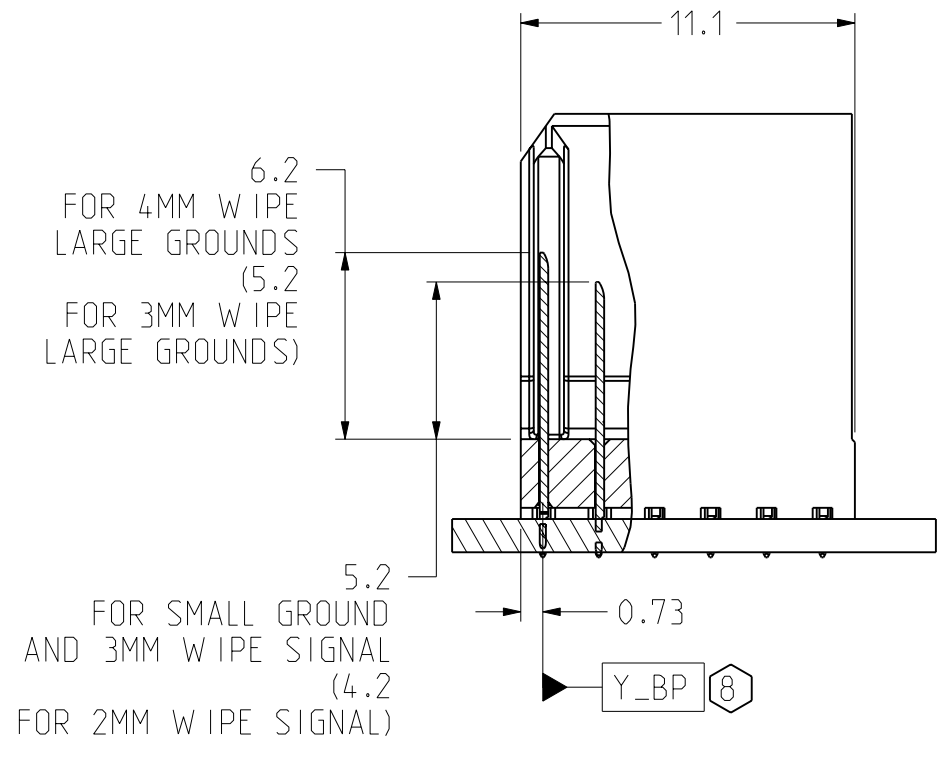
| ZONE | REV | SCR NUMBER | DESCRIPTION | BY | DATE | APPROVED |
|------|-----|------------|-------------|----|------|----------|
| | | | SEE SHEET 1 | | | |

DATUMS X_BP AND Y_BP INTERSECT THE SIGNAL A1 VIA ON BACKPLANE

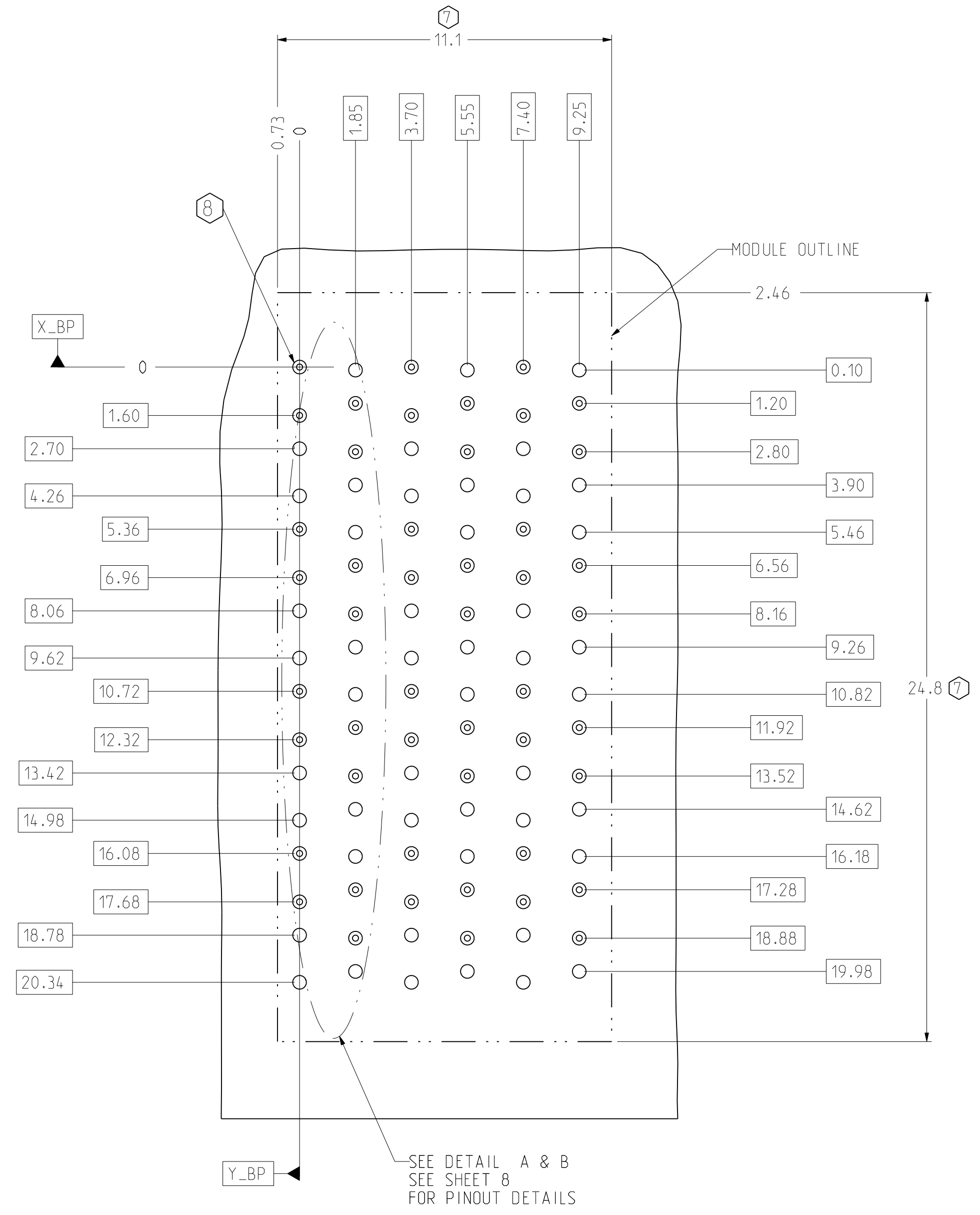


OPEN BACKPLANE MODULE DIMENSION

2.54 FROM TOP OF DC PCB TO CL OF ROW A ON BP
CONNECTOR REFERENCE SCALE 4/1



ISOMETRIC VIEW SCALE 4/1



BP HOLE PATTERN COMPONENT SIDE SCALE 8/1

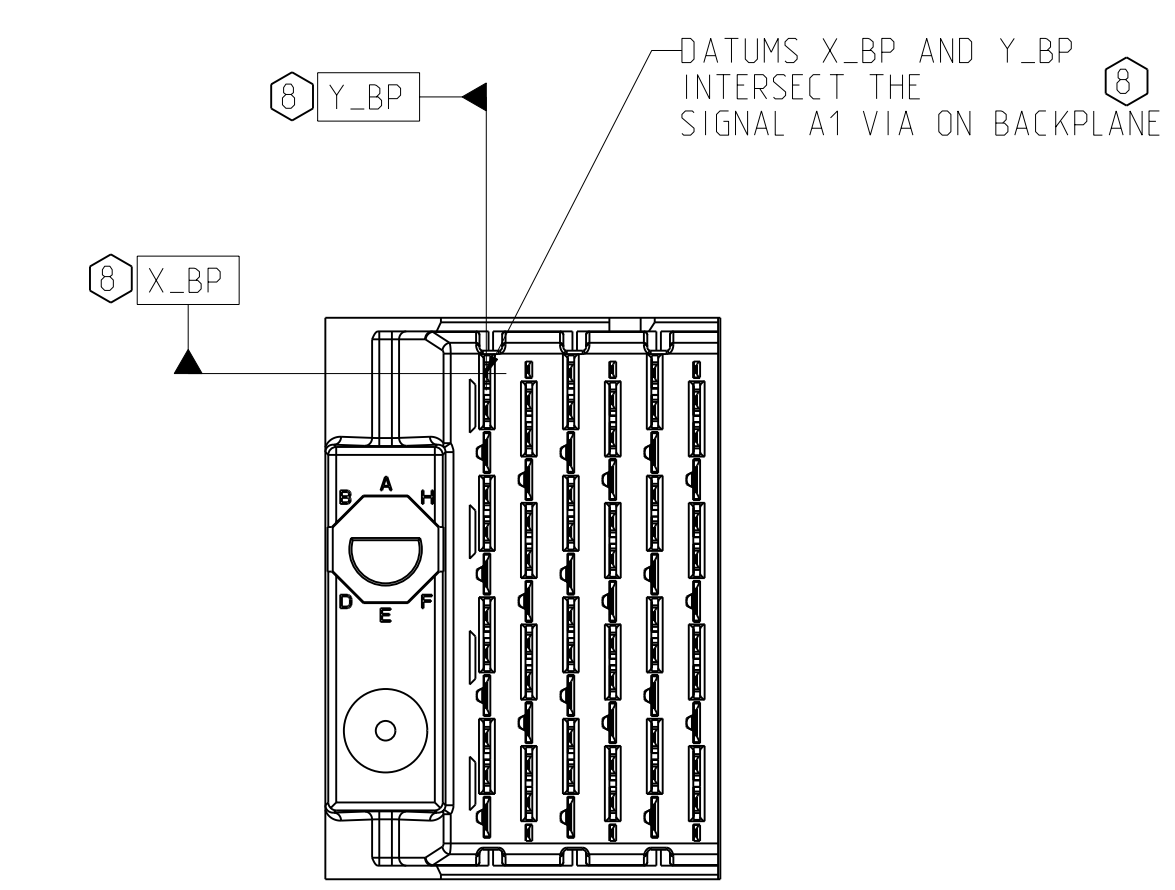
OPEN BACKPLANE FOOTPRINT

| TOLERANCES | | DESIGN | DATE | Amphenol TCS | |
|---|-------|----------|------------|---|---------------------|
| 0.0 | ±0.25 | LEIGHTON | 10/04/2006 | A Division of Amphenol Corporation | |
| 0.00 | ±0.13 | LEIGHTON | 01/04/2006 | 200 Innovative Way, Nashua, NH 03062 603.879.3000 | |
| 0.000 | ± - | A.PFAHNL | 10/05/2006 | TITLE BACKPLANE MODULES, VERTICAL MALE HEADER | |
| ANGLES | ± 3° | A.PFAHNL | 10/06/2006 | XCede, 4 PAIR 6 POSITION | |
| UNLESS OTHERWISE SPECIFIED DIMENSIONS ARE IN MM. DECIMAL MARKER IS PERIOD | | | | PART NO. | SEE PN TREE SHEET 1 |
| INTERPRET PER ASME Y14.5M | | | | DRAWING NO. | C951-400C-500 |
| CODE IDENT 31413 | | | | PROE ASSEM | C951-4-BP4 |
| CUSTOMER USE DRAWING | | | | FILE | C951-400C-500.drw |
| SIZE | D | SCALE | 4/1 | SHEET | 2 OF 8 |

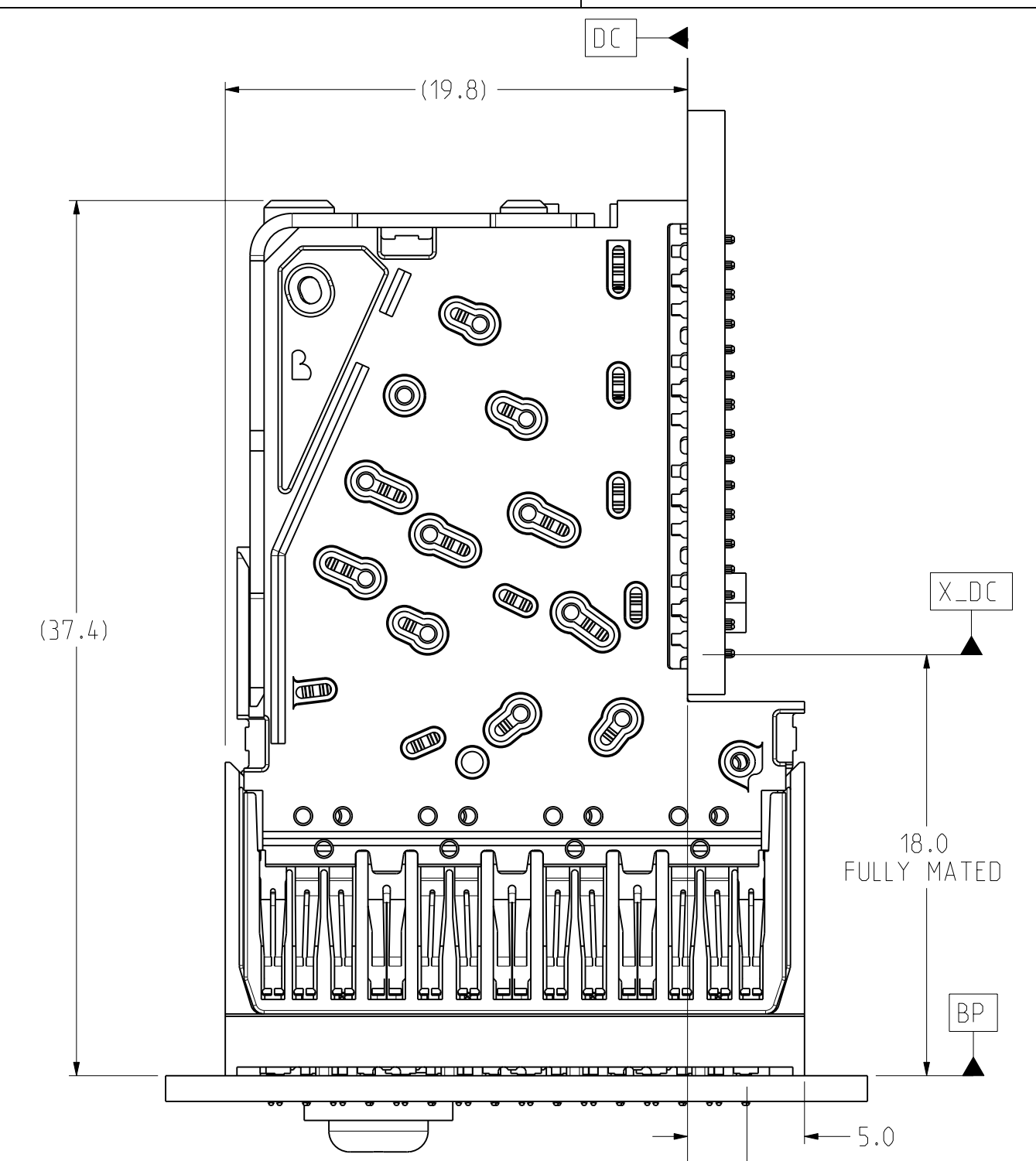
DRW NO. C951-400C-500

SH 2 REV B

| ZONE | REV | SCR NUMBER | DESCRIPTION | BY | DATE | APPROVED |
|------|-----|------------|-------------|----|------|----------|
| | | | SEE SHEET 1 | | | |

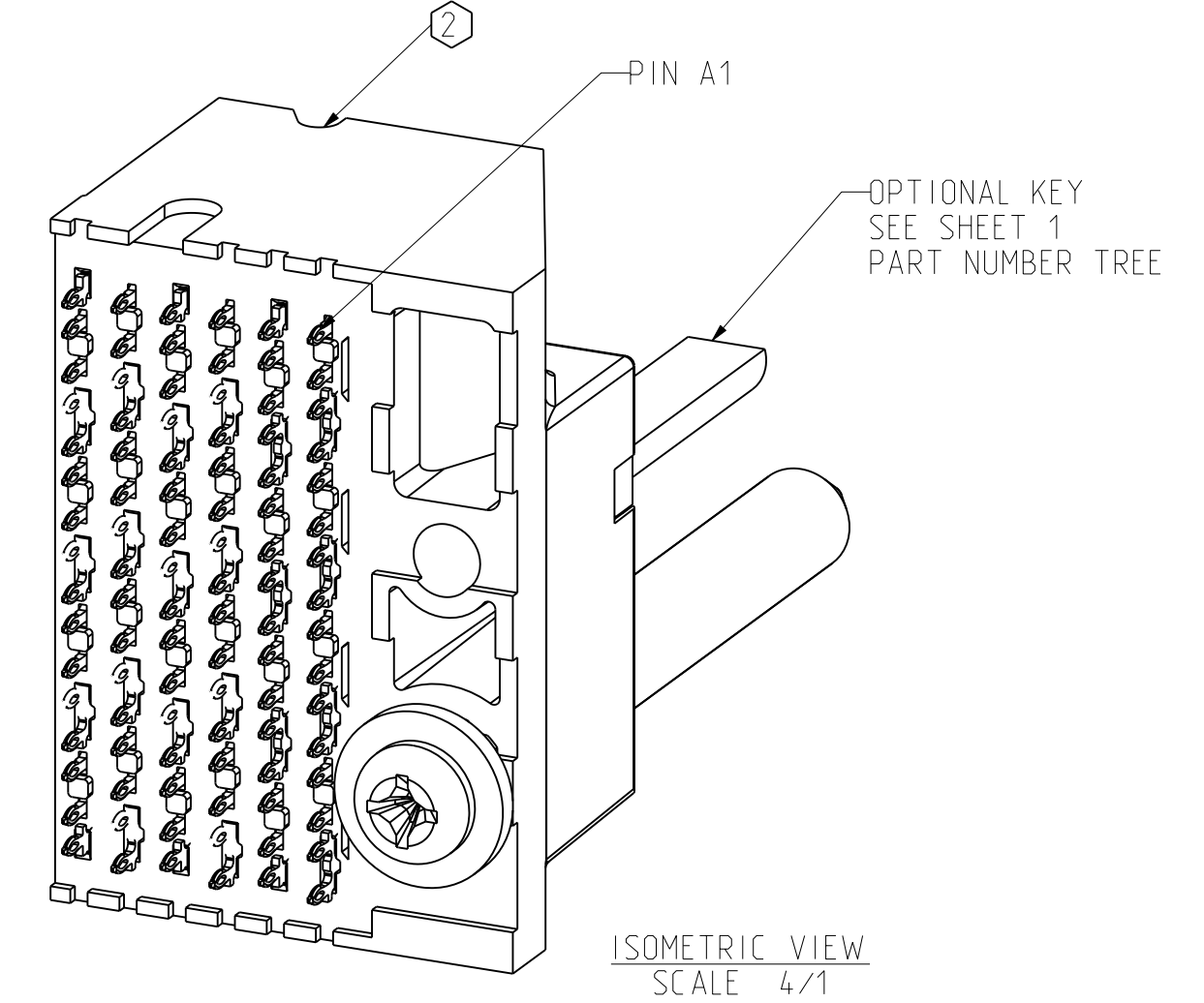
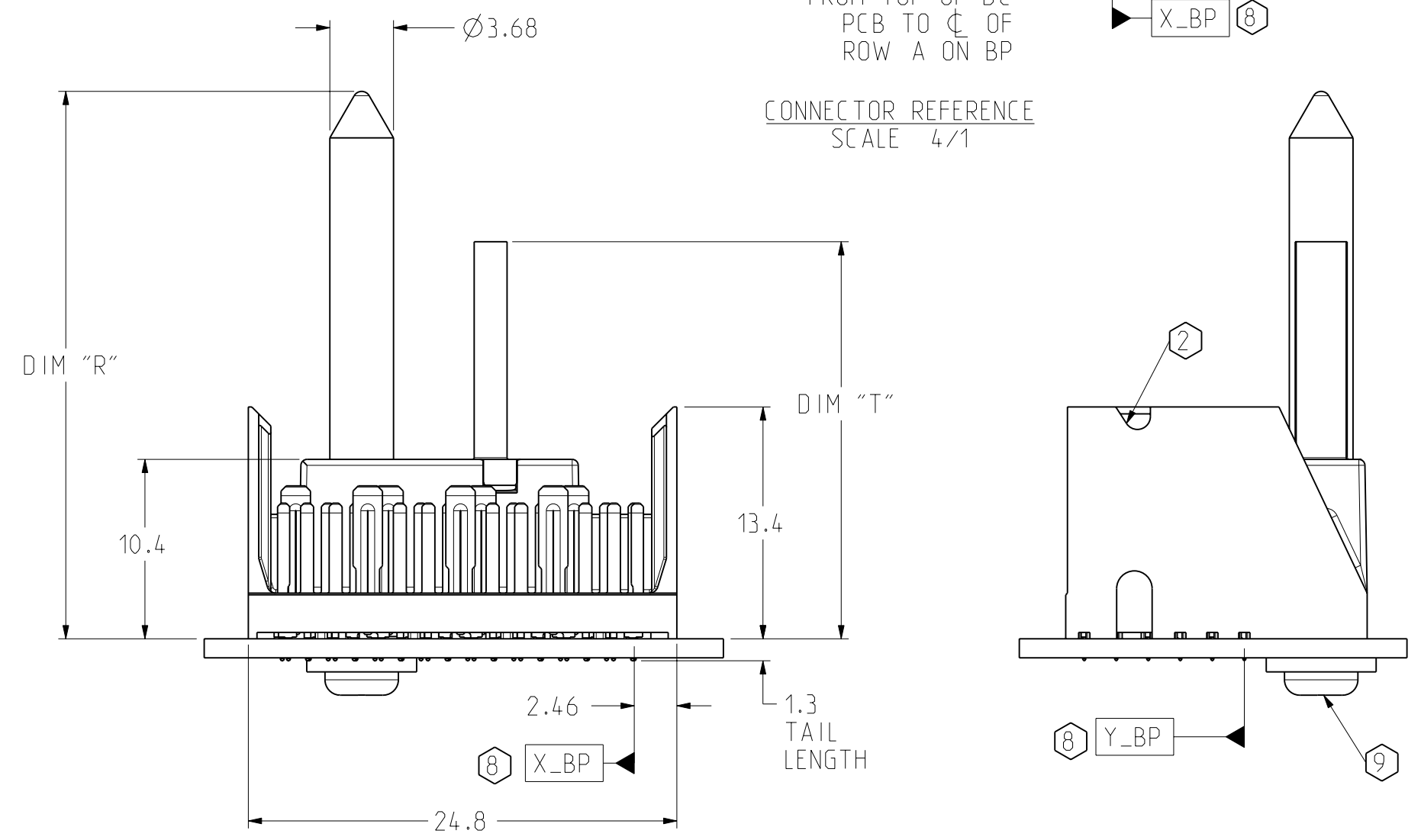
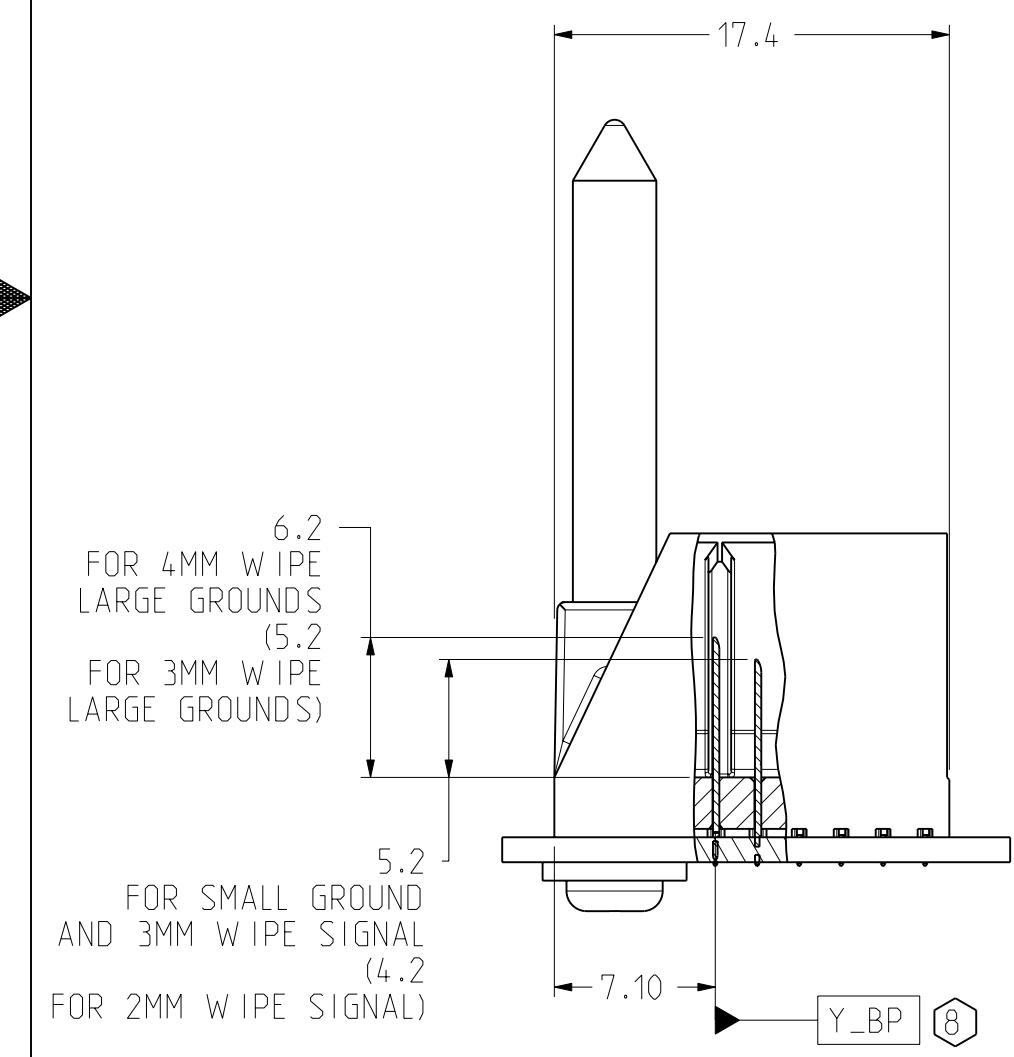


LEFT POLARIZING/GUIDE BACKPLANE MODULE DIMENSION

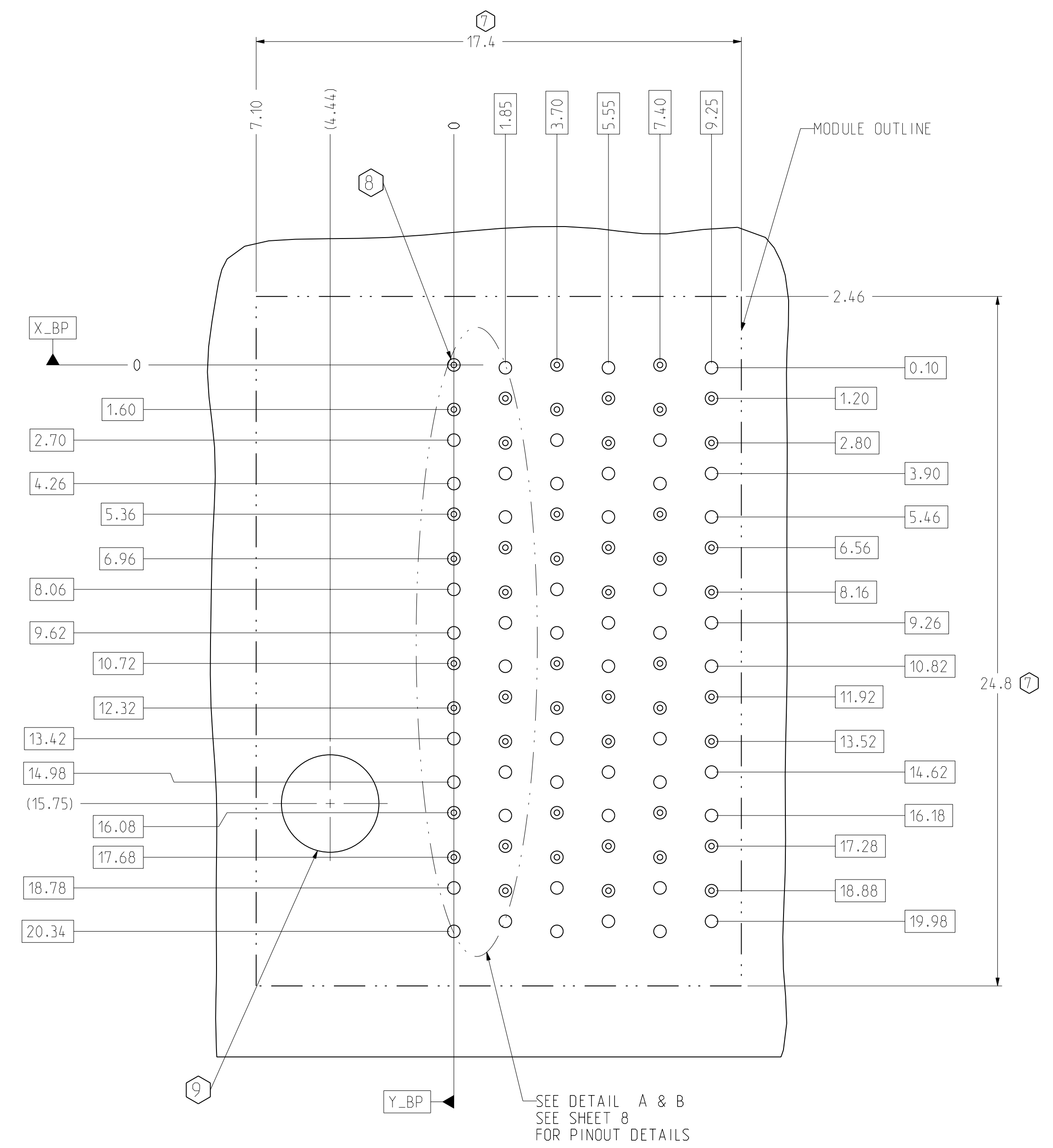


2.54 FROM TOP OF DC PCB TO C OF ROW A ON BP

CONNECTOR REFERENCE SCALE 4/1



| PART NUMBER | DIM "R" | DIM "T" |
|----------------------------------|---------|---------|
| 951-4X0C-X 0 X 951-4X0C-X 1 X | 31.6 | 23.0 |
| 951-4X0C-X 4 X 951-4X0C-X 5 X | 25.7 | 20.2 |



BP HOLE PATTERN COMPONENT SIDE SCALE 8/1

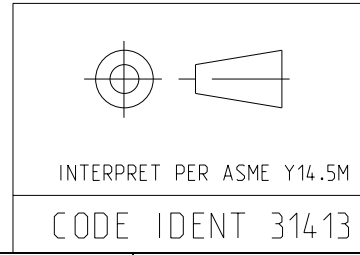
LEFT POLARIZING/GUIDE BACKPLANE FOOTPRINT

| TOLERANCES | DESIGN 10/04/2006 |
|------------|-------------------|
| 0.0 | ±0.25 |
| 0.00 | ±0.13 |
| 0.000 | ± - |
| ANGLES | ± 3° |

Amphenol TCS
A Division of Amphenol Corporation
200 Innovative Way, Nashua, NH 03062 603.879.3000

TITLE BACKPLANE MODULES, VERTICAL MALE HEADER
XCede, 4 PAIR 6 POSITION

UNLESS OTHERWISE SPECIFIED DIMENSIONS ARE IN MM. DECIMAL MARKER IS PERIOD



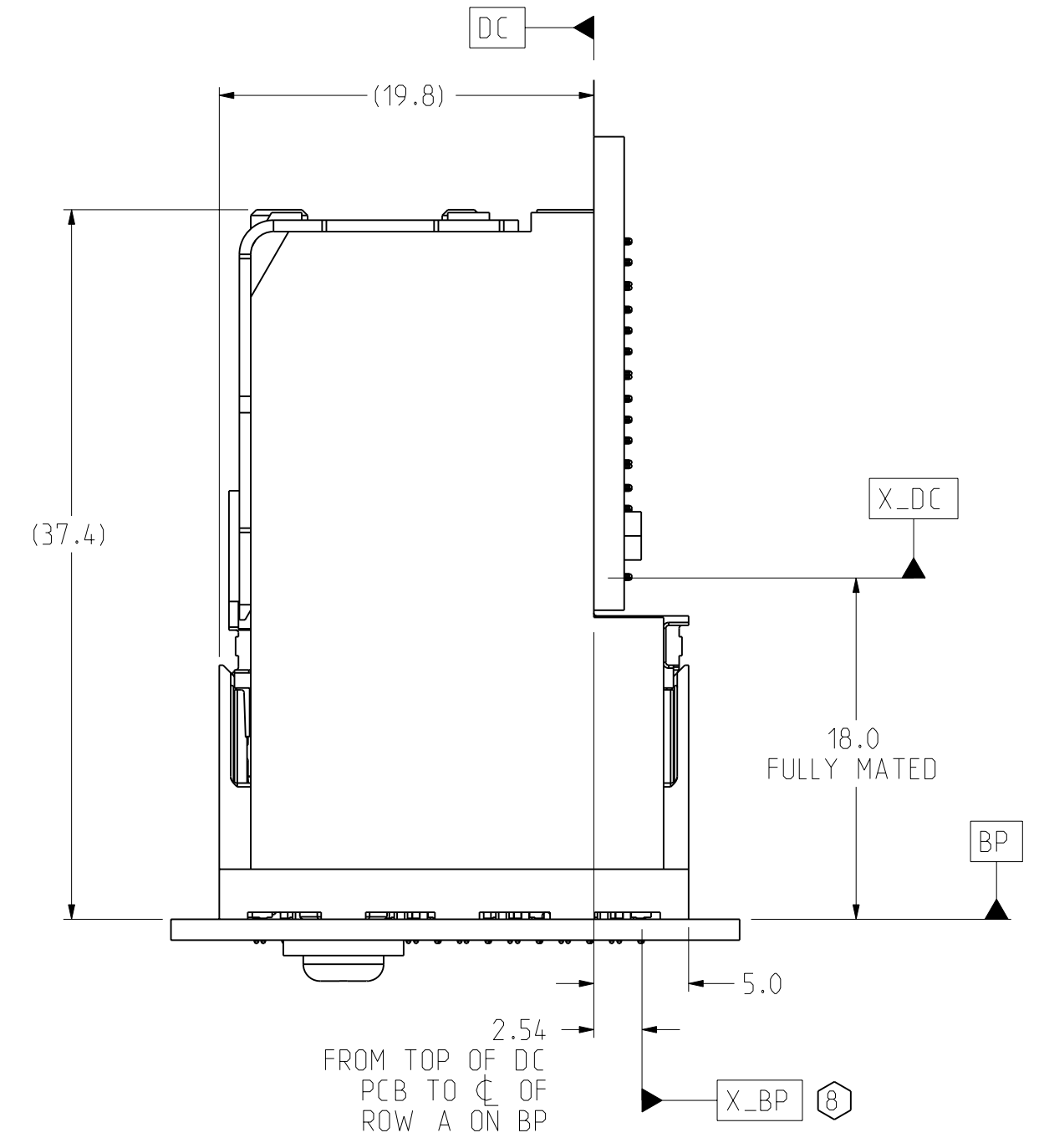
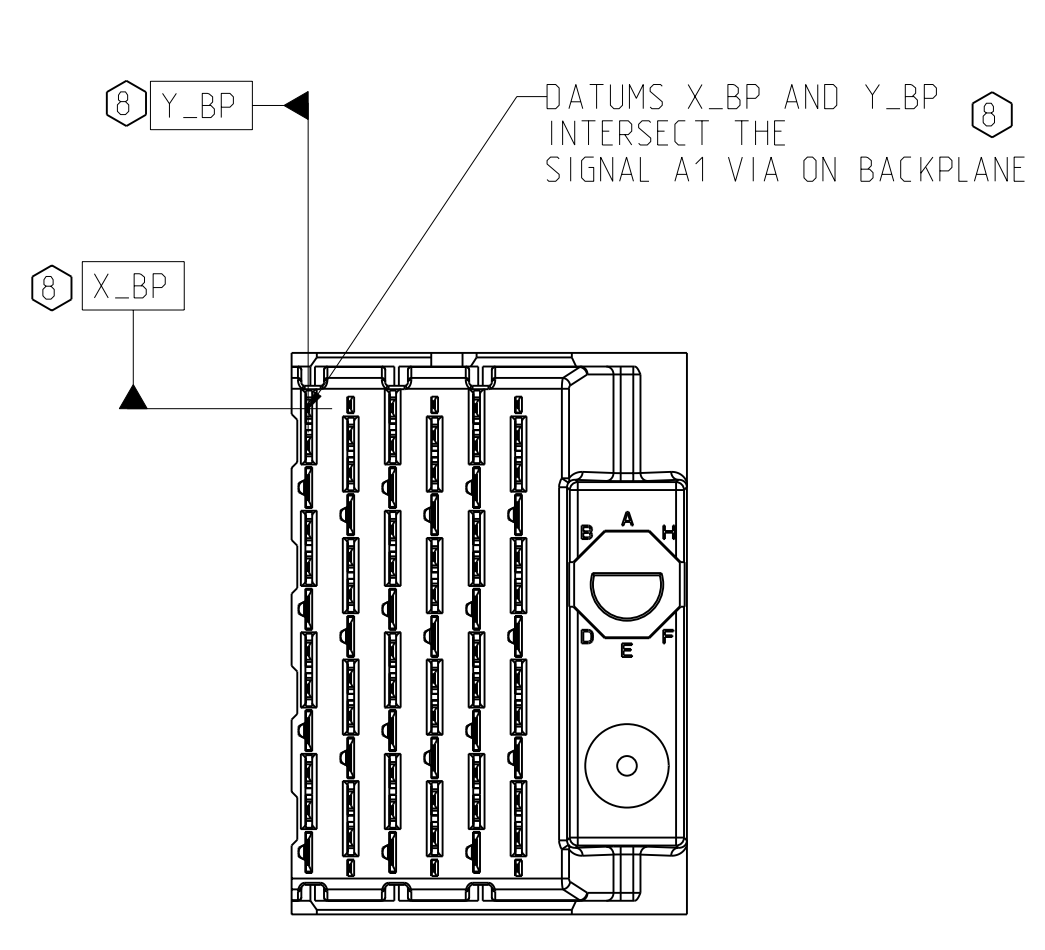
CUSTOMER USE DRAWING

| | | | |
|-------------|--|-------|--------|
| PART NO. | SEE PN TREE SHEET 1 | REV | N/A |
| DRAWING NO. | C951-400C-500 | REV | B |
| | ProE ASSEM C951-4-BP4 C951-400C-500.drw | 14.7 | B.0 |
| SIZE | D | SCALE | 4/1 |
| | | SHEET | 3 OF 8 |

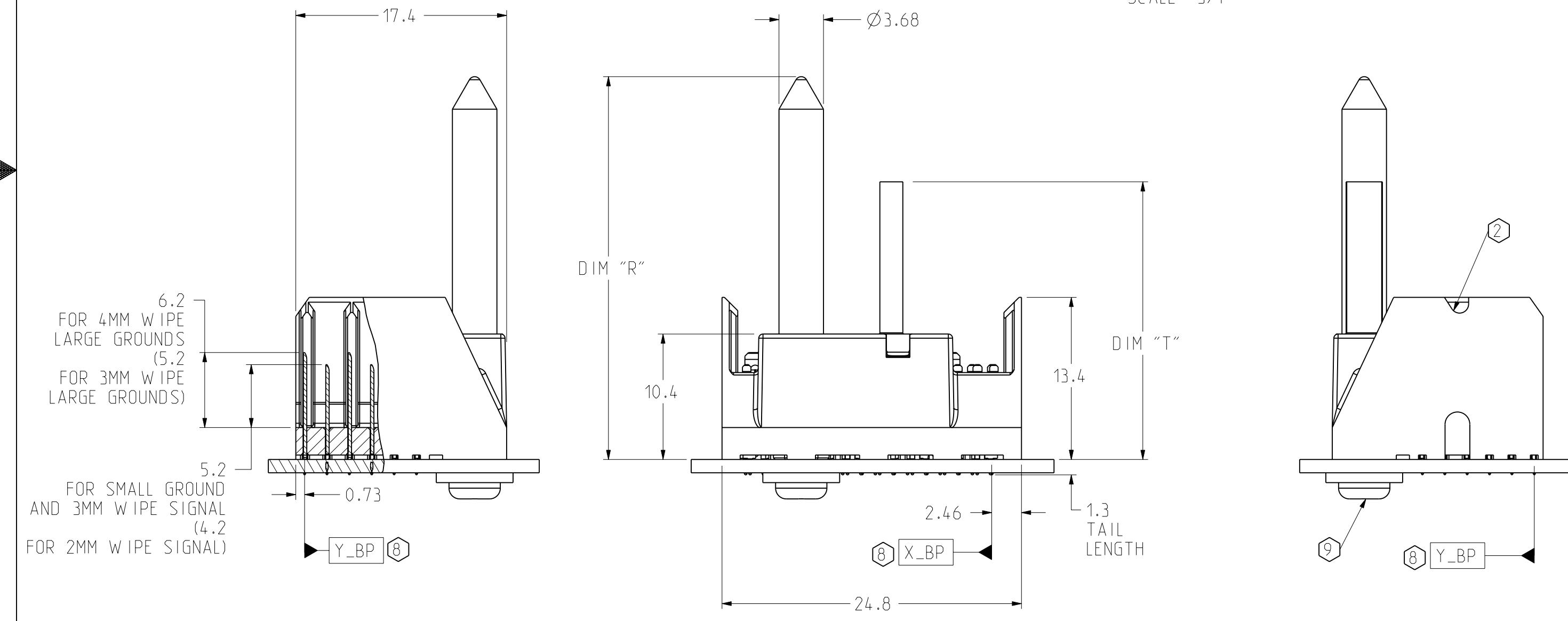
DRW NO. C951-400C-500

SH 3 REV B

RIGHT POLARIZING/GUIDE
BACKPLANE MODULE DIMENSION

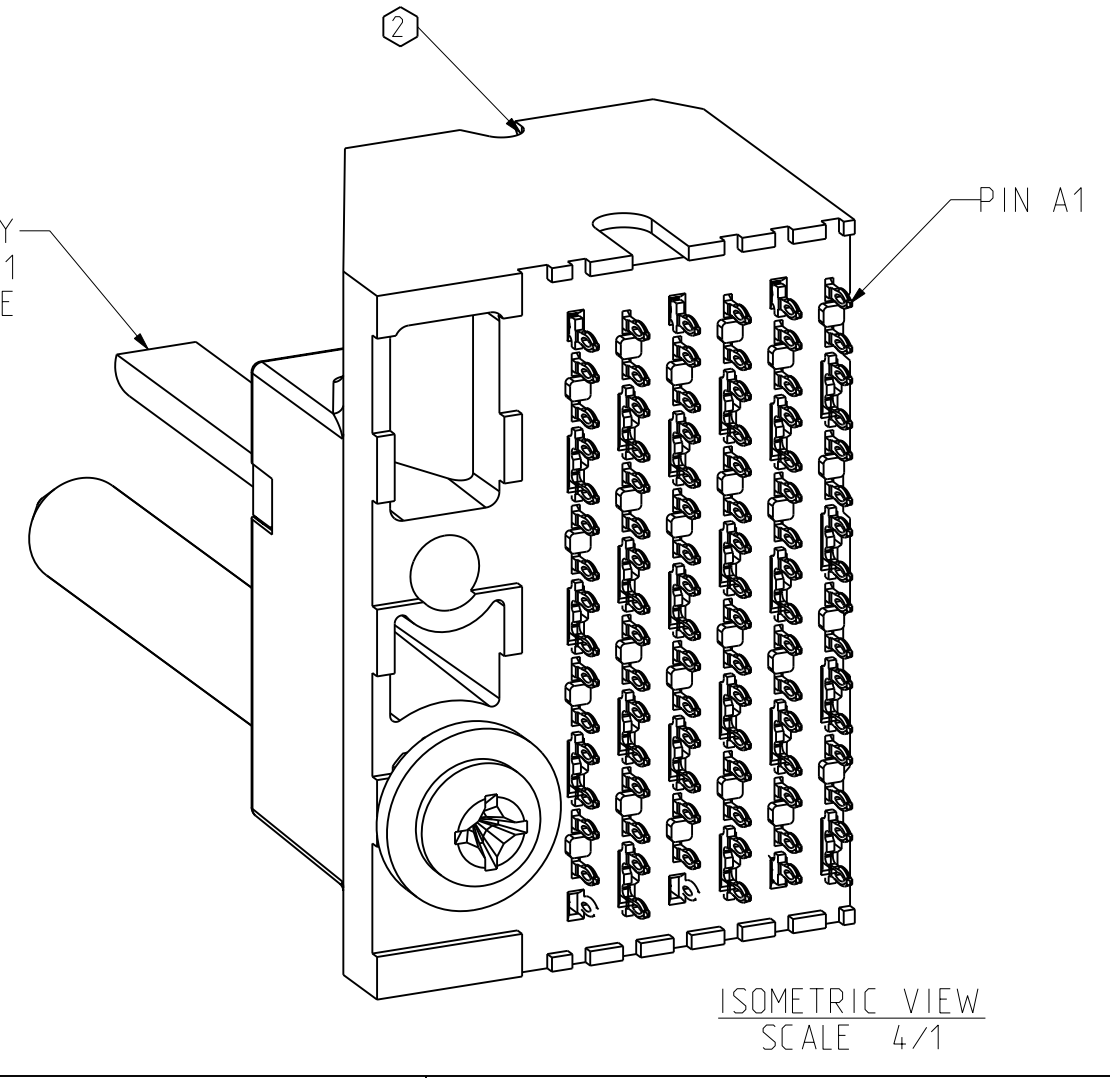


CONNECTOR REFERENCE
SCALE 3/1

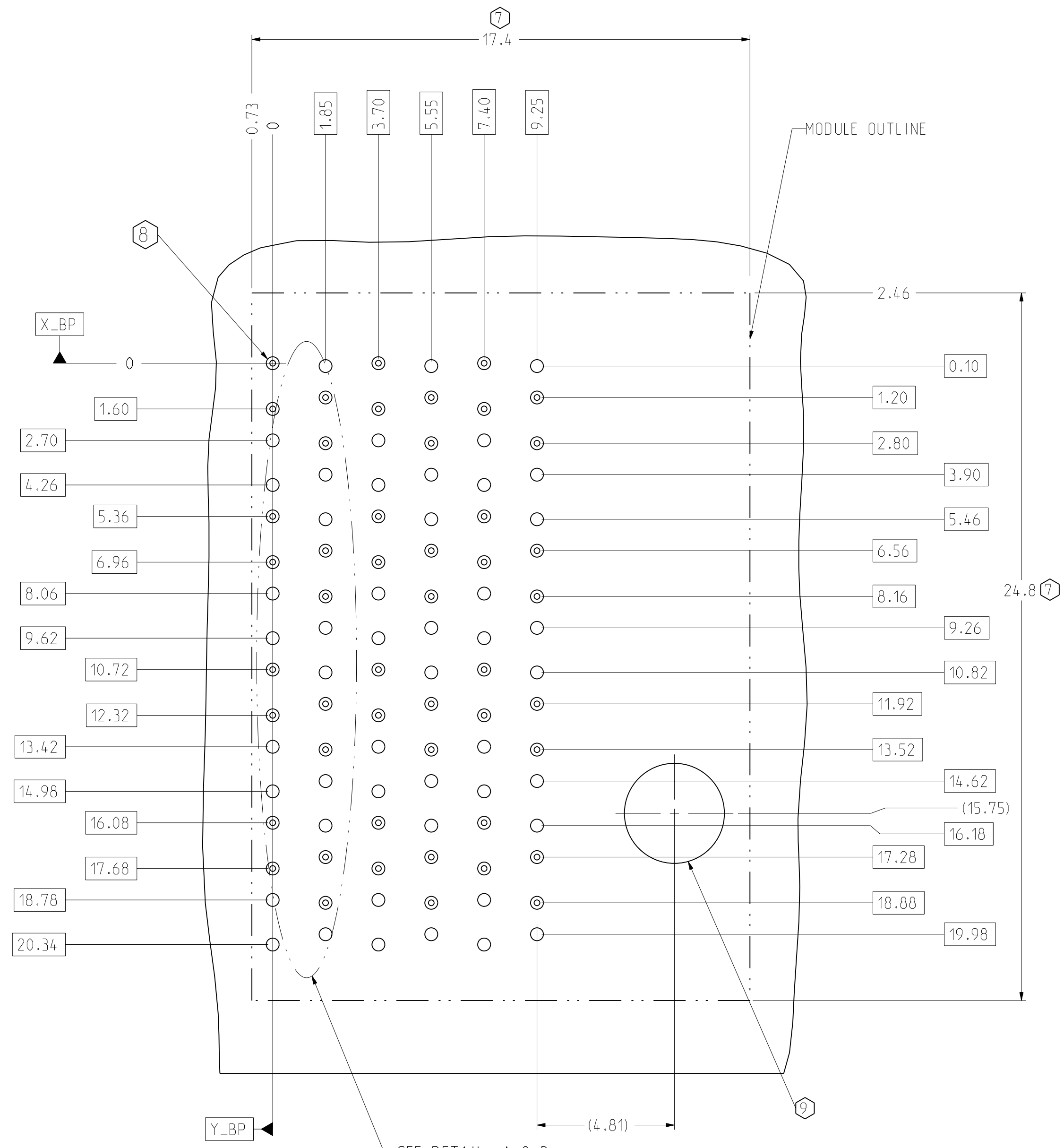


| PART NUMBER | DIM "R" | DIM "T" |
|----------------------------------|---------|---------|
| 951-4X0C-X 0 X 951-4X0C-X 1 X | 31.6 | 23.0 |
| 951-4X0C-X 4 X 951-4X0C-X 5 X | 25.7 | 20.2 |

OPTIONAL KEY -
SEE SHEET 1
PART NUMBER TREE



ISOMETRIC VIEW
SCALE 4/1



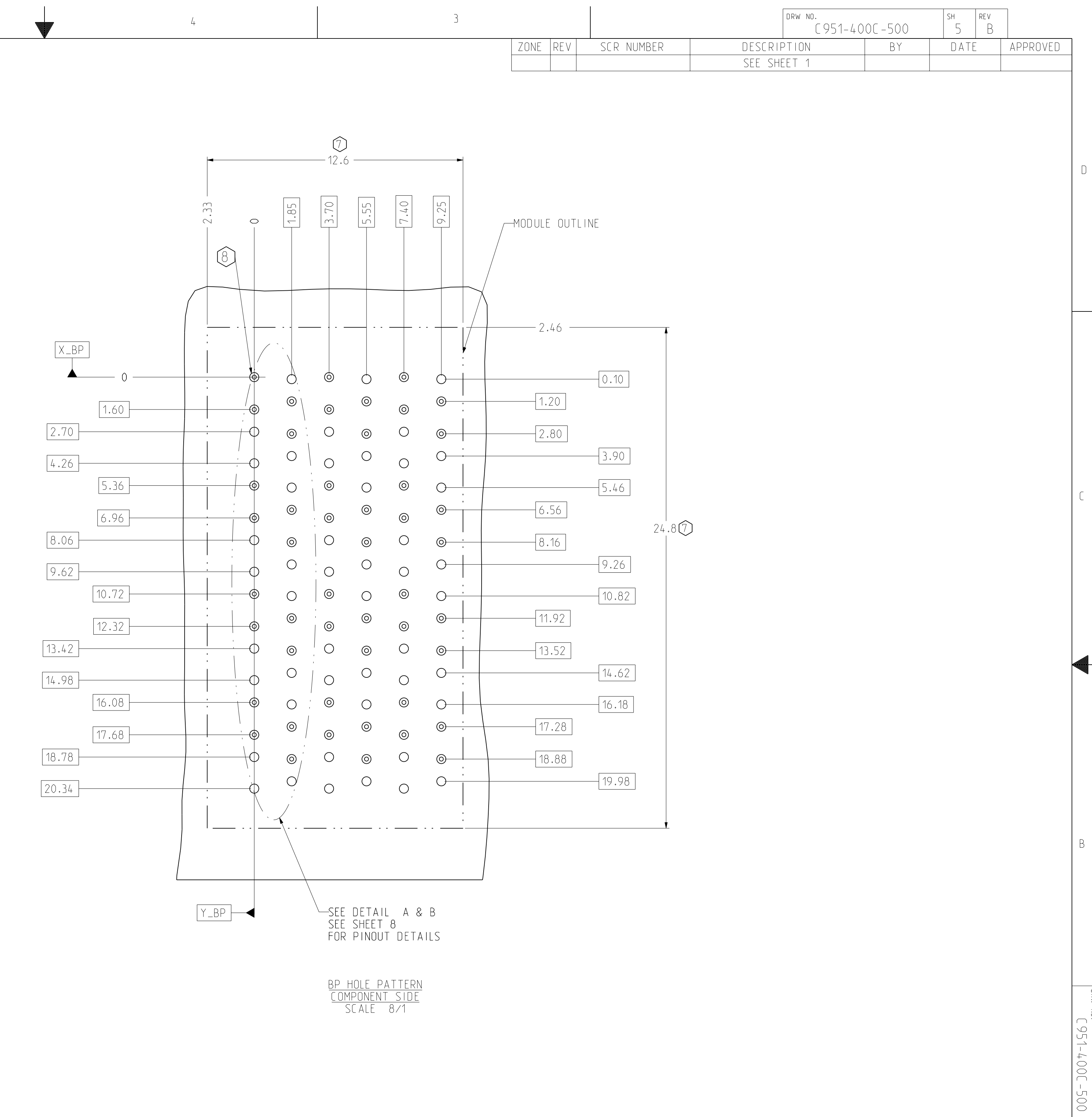
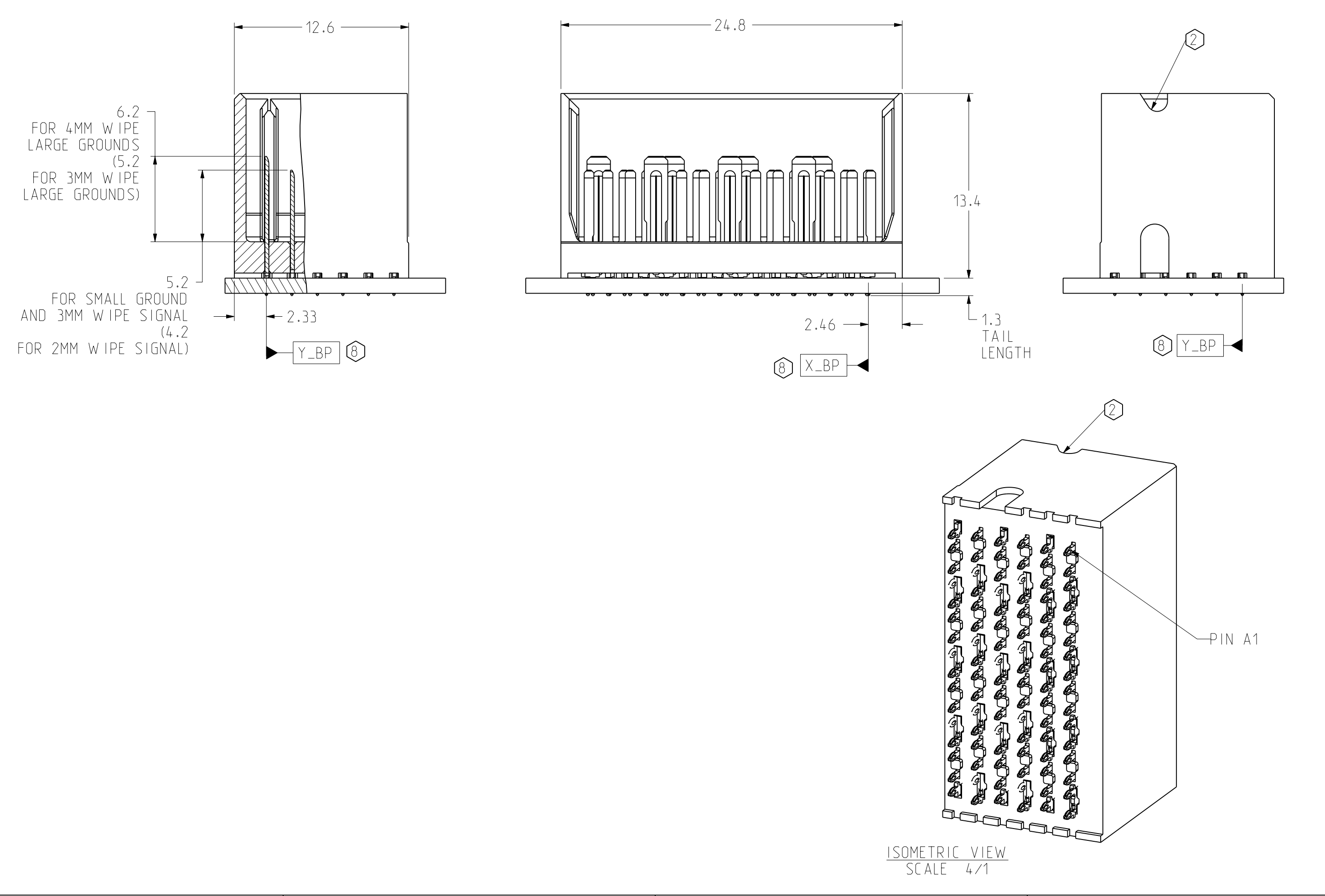
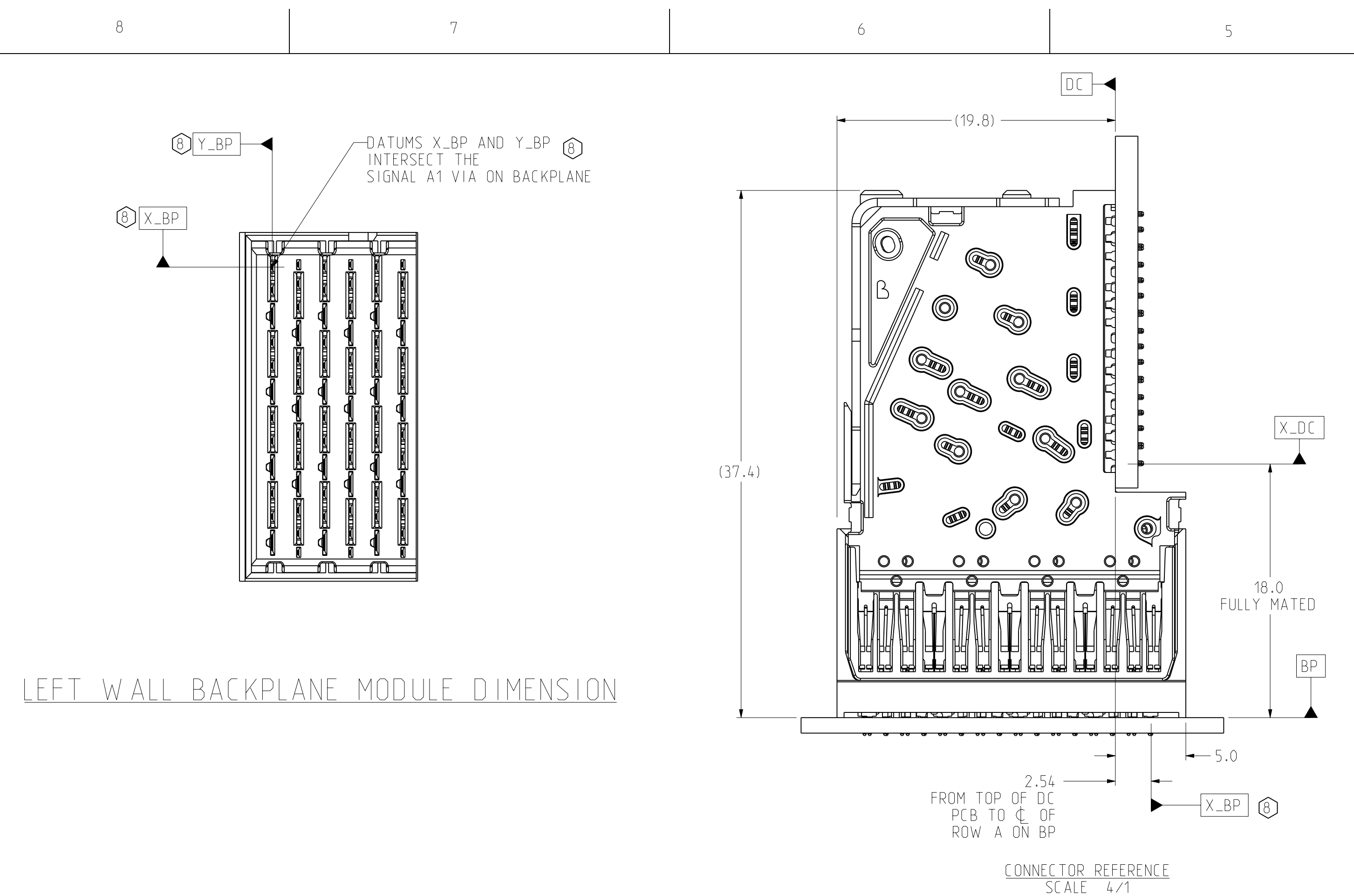
BP HOLE PATTERN
COMPONENT SIDE
SCALE 8/1

RIGHT POLARIZING/GUIDE
BACKPLANE FOOTPRINT

| | | | | |
|---|---|--|-------------------------|---|
| TOLERANCES | DESIGN 10/04/2006 LEIGHTON | Amphenol TCS A Division of Amphenol Corporation 200 Innovative Way, Nashua, NH 03062 603.879.3000 | TITLE | BACKPLANE MODULES, VERTICAL MALE HEADER XCede, 4 PAIR 6 POSITION |
| 0.0 ±0.25 | DRAWN 01/04/2006 LEIGHTON | | PART NO. | SEE PN TREE SHEET 1 |
| 0.00 ±0.13 | CHK 10/05/2006 A.PFAHNL | | DRAWING NO. | C951-400C-500 |
| 0.000 ± - | APVD 10/06/2006 A.PFAHNL | | PROJ ASSEM | C951-4-BP4 C951-400C-500.drw |
| ANGLES ± 3° | UNLESS OTHERWISE SPECIFIED DIMENSIONS ARE IN MM. DECIMAL MARKER IS PERIOD | | SIZE | D SCALE 3/1 SHEET 4 OF 8 |
| INTERPRET PER ASME Y14.5M CODE IDENT 31413 | | | CUSTOMER USE DRAWING | |

DRAWING NO. C951-400C-500

SH 4 REV B



LEFT WALL BACKPLANE FOOTPRINT

| | | | | | | |
|-------------|-------|---|--|-------------|---|--------------|
| TOLERANCES | | DESIGN 10/04/2006 LEIGHTON | Amphenol TCS A Division of Amphenol Corporation 200 Innovative Way, Nashua, NH 03062 603.879.3000 | TITLE | BACKPLANE MODULES, VERTICAL MALE HEADER XCede, 4 PAIR 6 POSITION | |
| 0.0 | ±0.25 | DRAWN 01/04/2006 LEIGHTON | | PART NO. | SEE PN TREE SHEET 1 | REV N/A |
| 0.00 | ±0.13 | CHK 10/05/2006 A.PFAHNL | | DRAWING NO. | C951-400C-500 | REV B |
| 0.000 | ± - | APVD 10/06/2006 A.PFAHNL | | PROJ ASSEM | C951-4-BP4 C951-400C-500.drw | 14.7 B.O |
| ANGLES ± 3° | | UNLESS OTHERWISE SPECIFIED DIMENSIONS ARE IN MM. DECIMAL MARKER IS PERIOD | | SIZE D | SCALE 4/1 | SHEET 5 OF 8 |

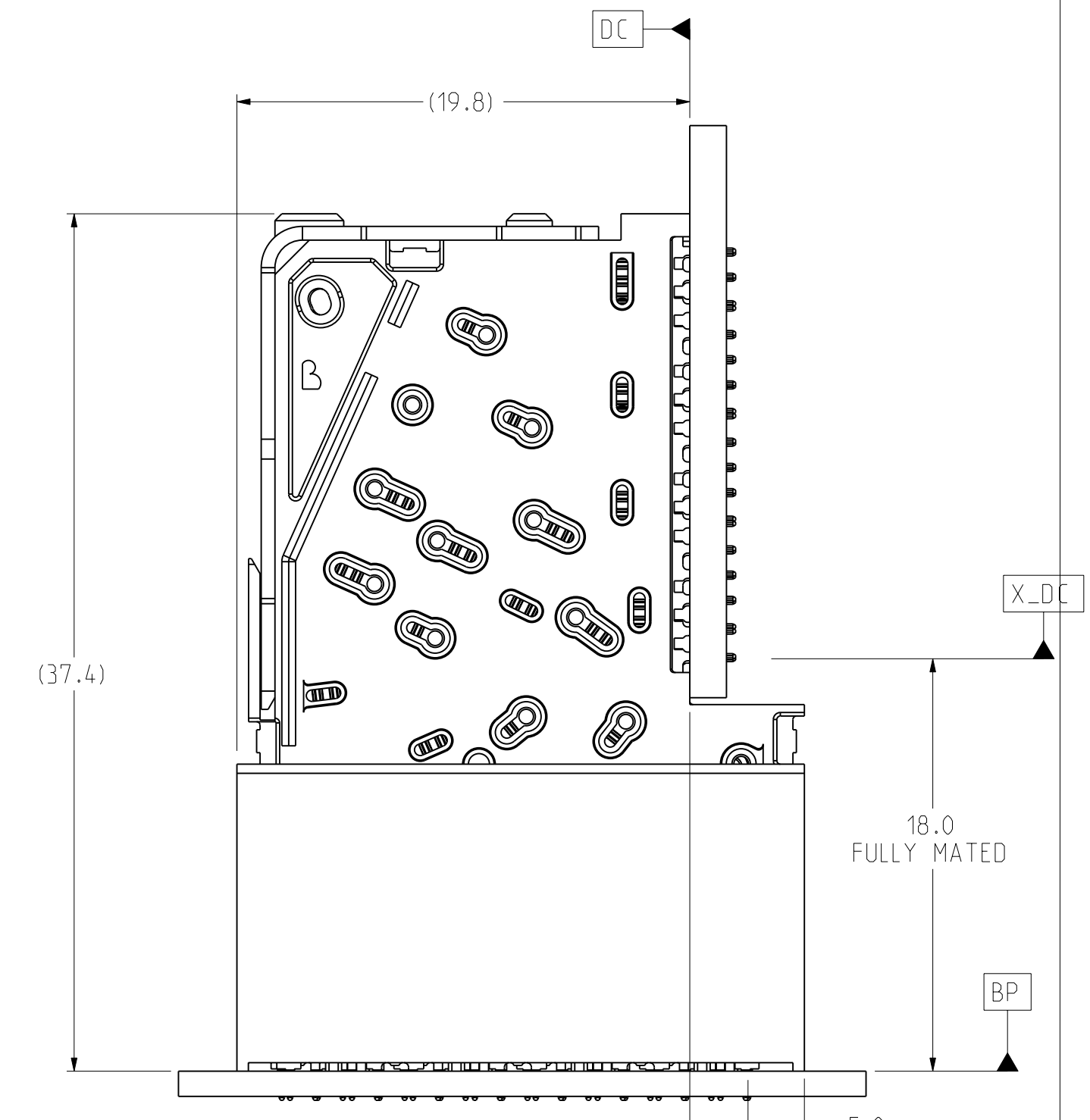
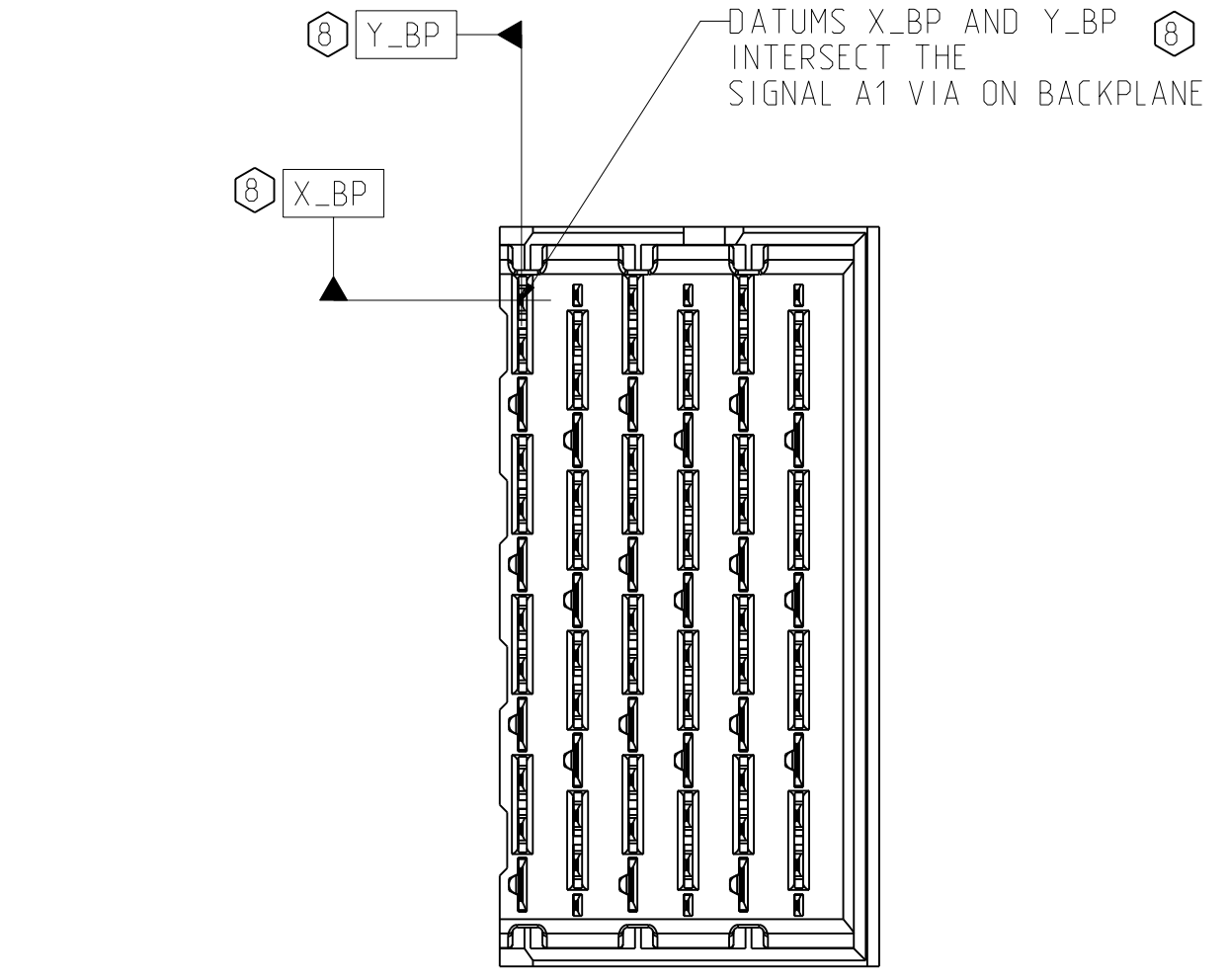
INTERPRET PER ASME Y14.5M
CODE IDENT 31413

CUSTOMER USE
DRAWING

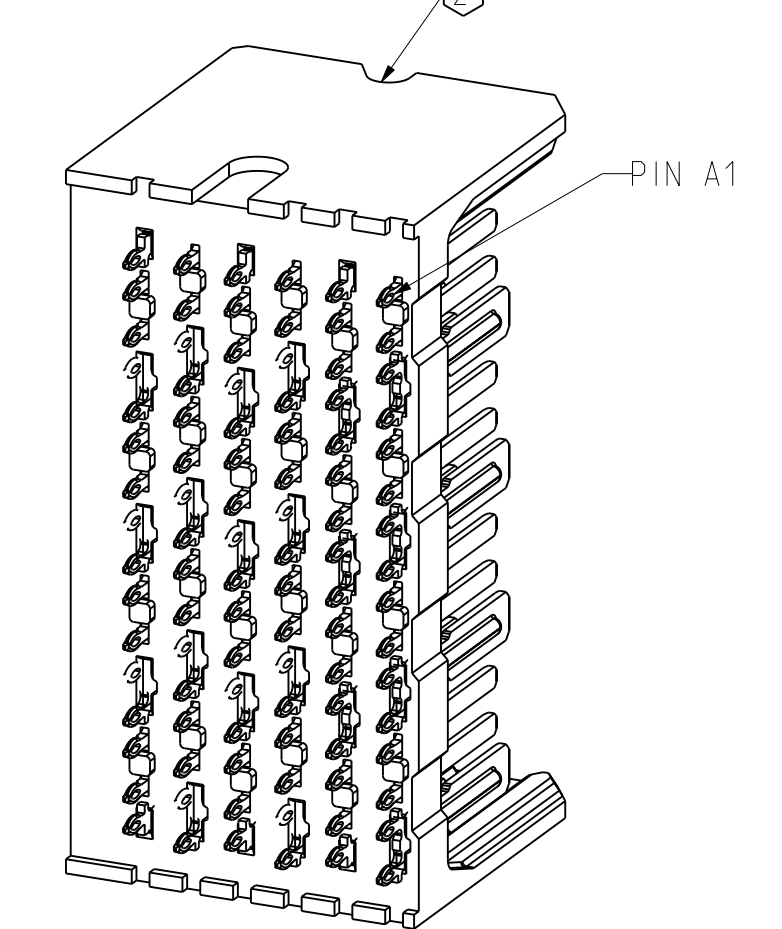
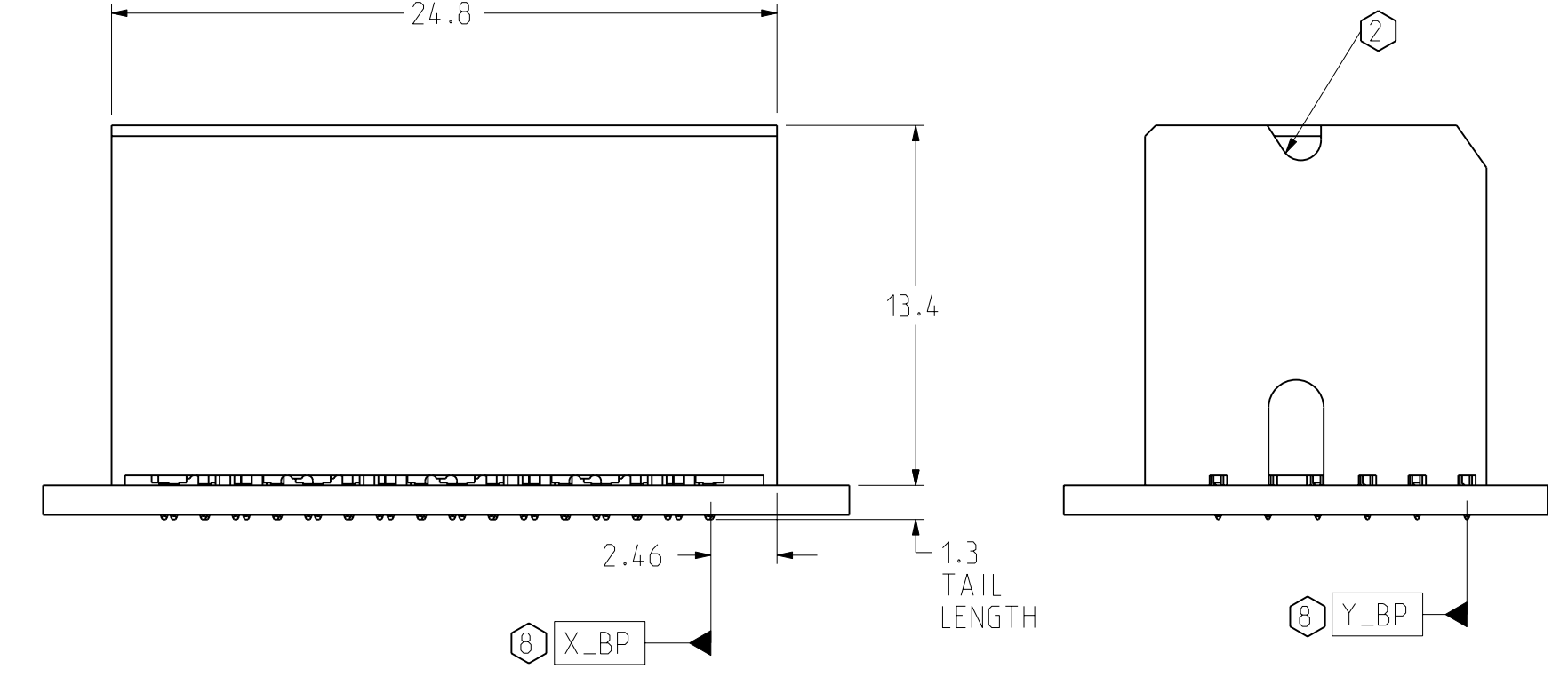
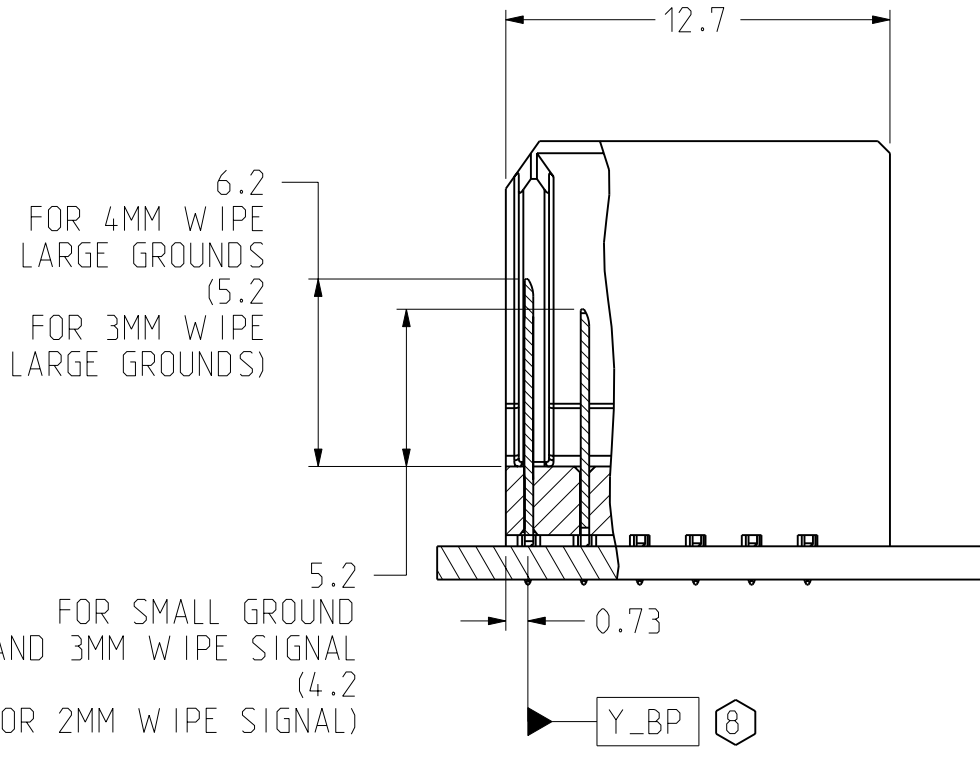
DRW NO. C951-400C-500

SH 5
REV B

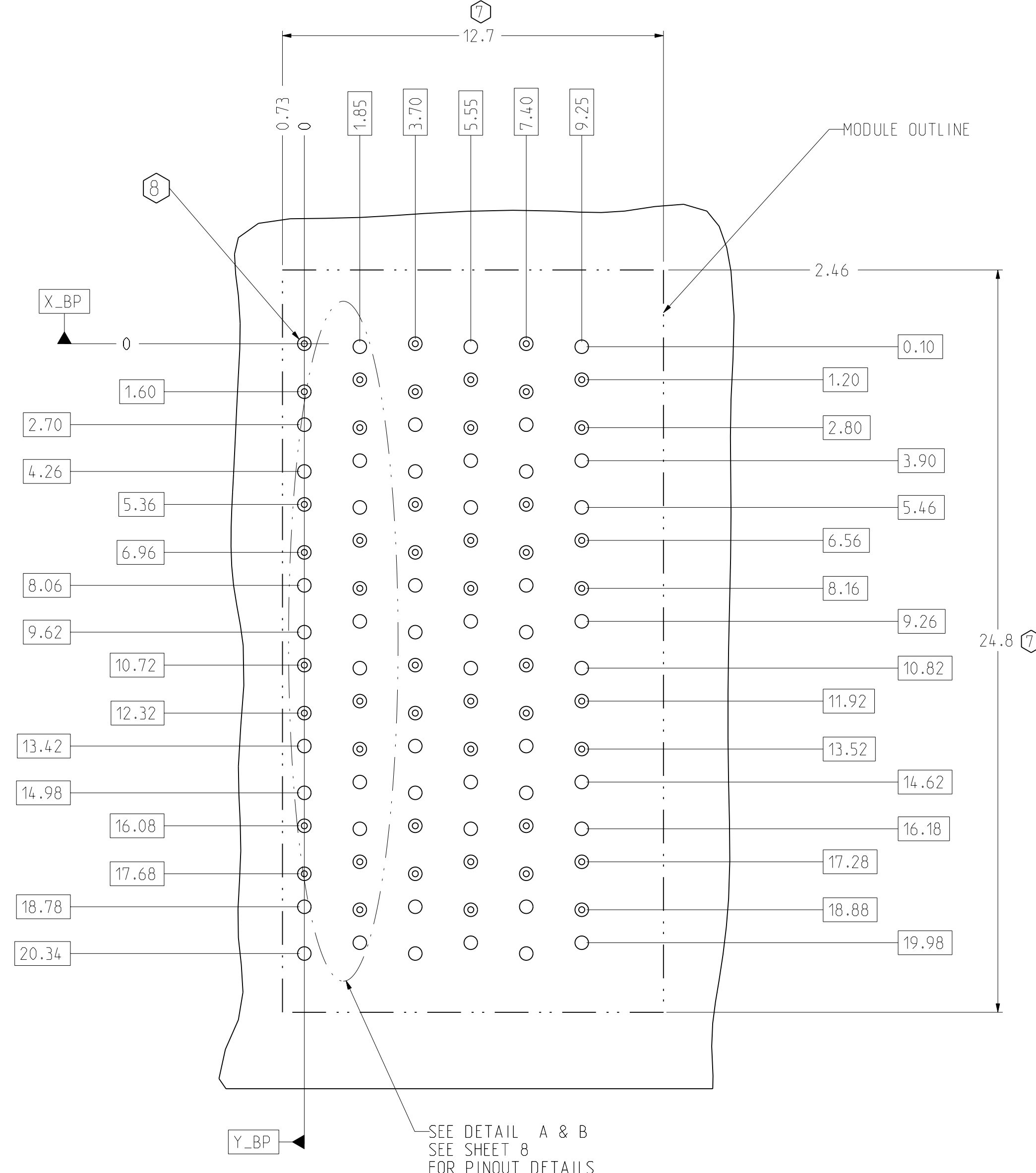
| ZONE | REV | SCR NUMBER | DESCRIPTION | BY | DATE | APPROVED |
|------|-----|------------|-------------|----|------|----------|
| | | | SEE SHEET 1 | | | |



RIGHT WALL BACKPLANE MODULE DIMENSION



ISOMETRIC VIEW SCALE 4/1



BP HOLE PATTERN COMPONENT SIDE SCALE 8/1

RIGHT WALL BACKPLANE FOOTPRINT

| TOLERANCES | | DESIGN | 10/04/2006 | LEIGHTON | |
|------------|-------|---|------------|----------|--|
| 0.0 | ±0.25 | DRAWN | 01/04/2006 | LEIGHTON | |
| 0.00 | ±0.13 | CHK | 10/05/2006 | A.PFAHNL | |
| 0.000 | ± | APVD | 10/06/2006 | A.PFAHNL | |
| ANGLES | ± 3° | UNLESS OTHERWISE SPECIFIED DIMENSIONS ARE IN MM, DECIMAL MARKER IS PERIOD | | | |

| | | | |
|--|---------------------|--|-----|
| Amphenol TCS A Division of Amphenol Corporation 200 Innovative Way, Nashua, NH 03062 603.879.3000 | | TITLE BACKPLANE MODULES, VERTICAL MALE HEADER XCede, 4 PAIR 6 POSITION | |
| PART NO. | SEE PN TREE SHEET 1 | REV | N/A |
| DRAWING NO. | C951-400C-500 | REV | B |
| SIZE | D | SCALE | 4/1 |
| SHEET 6 OF 8 | | 14.7 | B.O |

INTERPRET PER ASME Y14.5M
CODE IDENT 31413

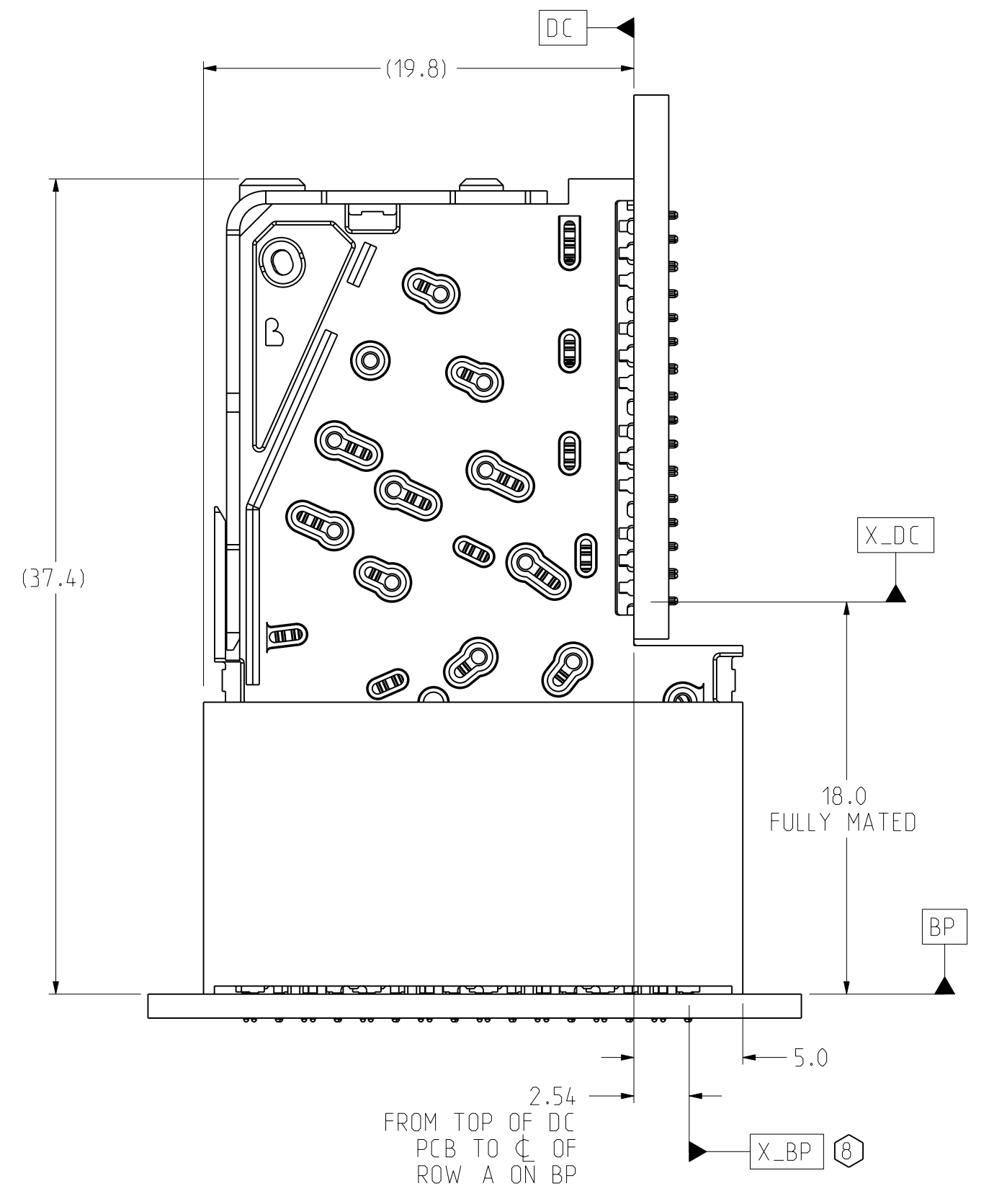
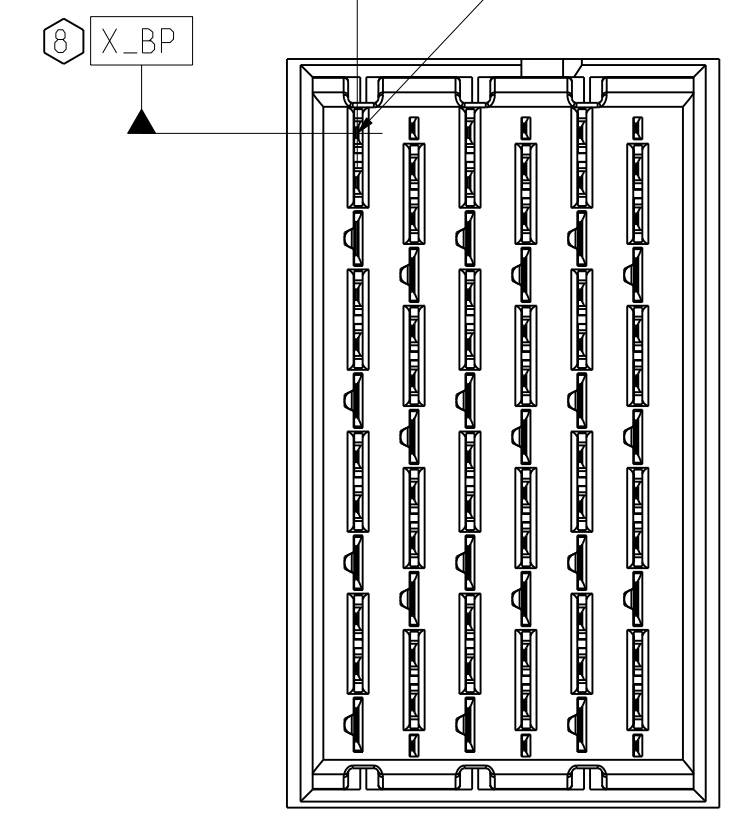
CUSTOMER USE
DRAWING

C951-400C-500

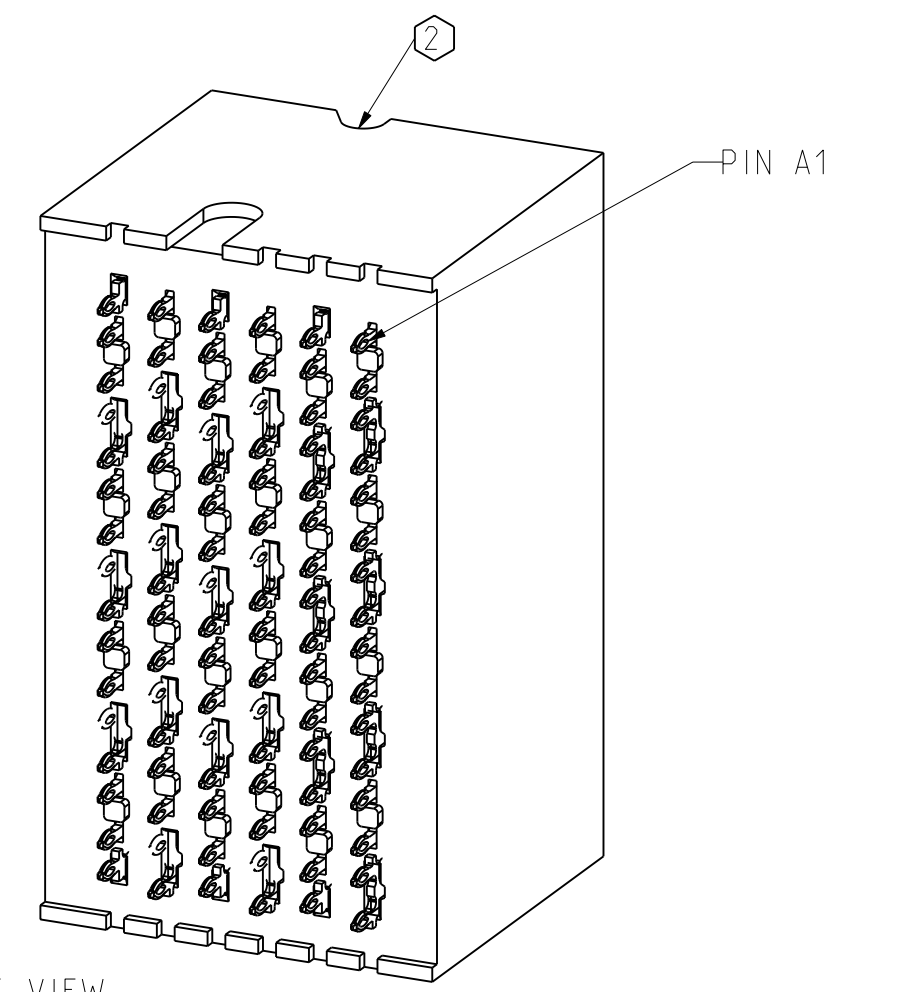
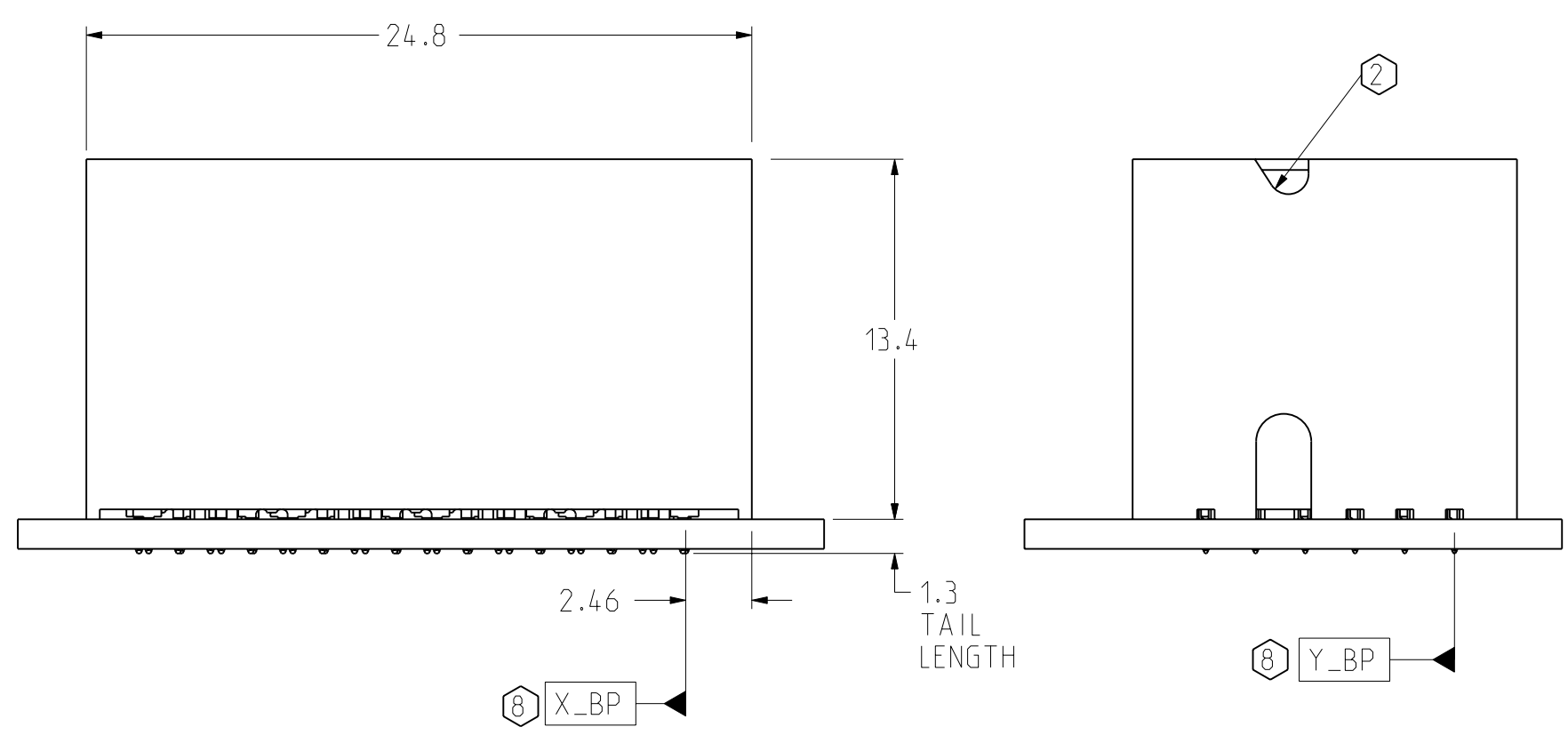
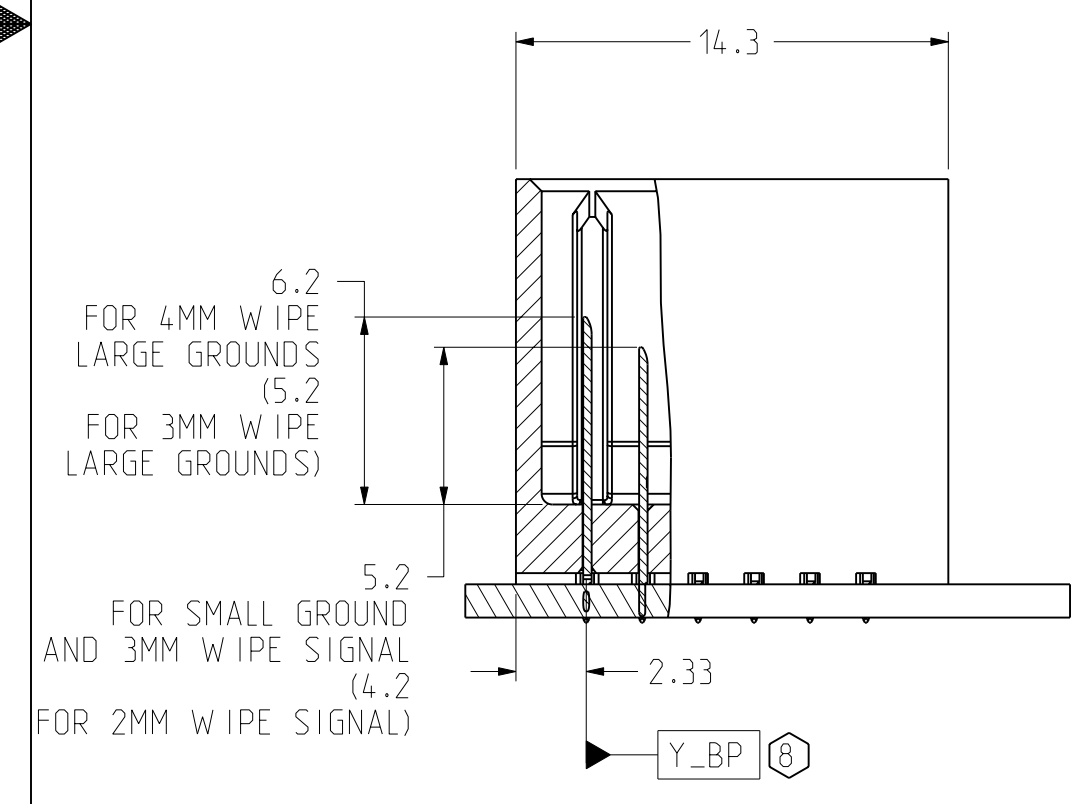
SH 6 REV B

| ZONE | REV | SCR NUMBER | DESCRIPTION | BY | DATE | APPROVED |
|------|-----|------------|-------------|----|------|----------|
| | | | SEE SHEET 1 | | | |

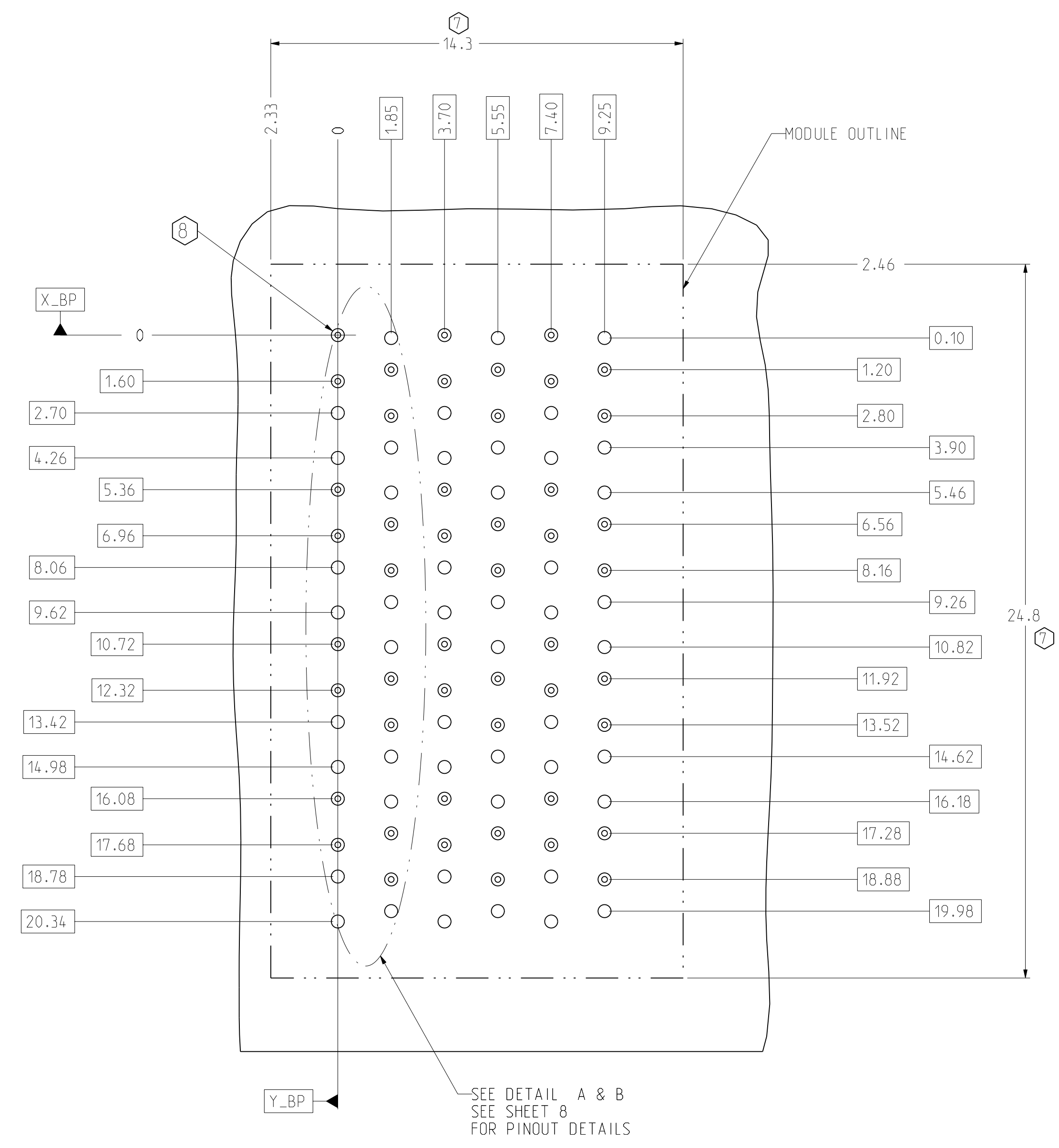
DATUMS X_BP AND Y_BP INTERSECT THE SIGNAL A1 VIA ON BACKPLANE



TWO WALL BACKPLANE MODULE DIMENSION



ISOMETRIC VIEW SCALE 4/1



SEE DETAIL A & B SEE SHEET 8 FOR PINOUT DETAILS

BP HOLE PATTERN COMPONENT SIDE SCALE 8/1

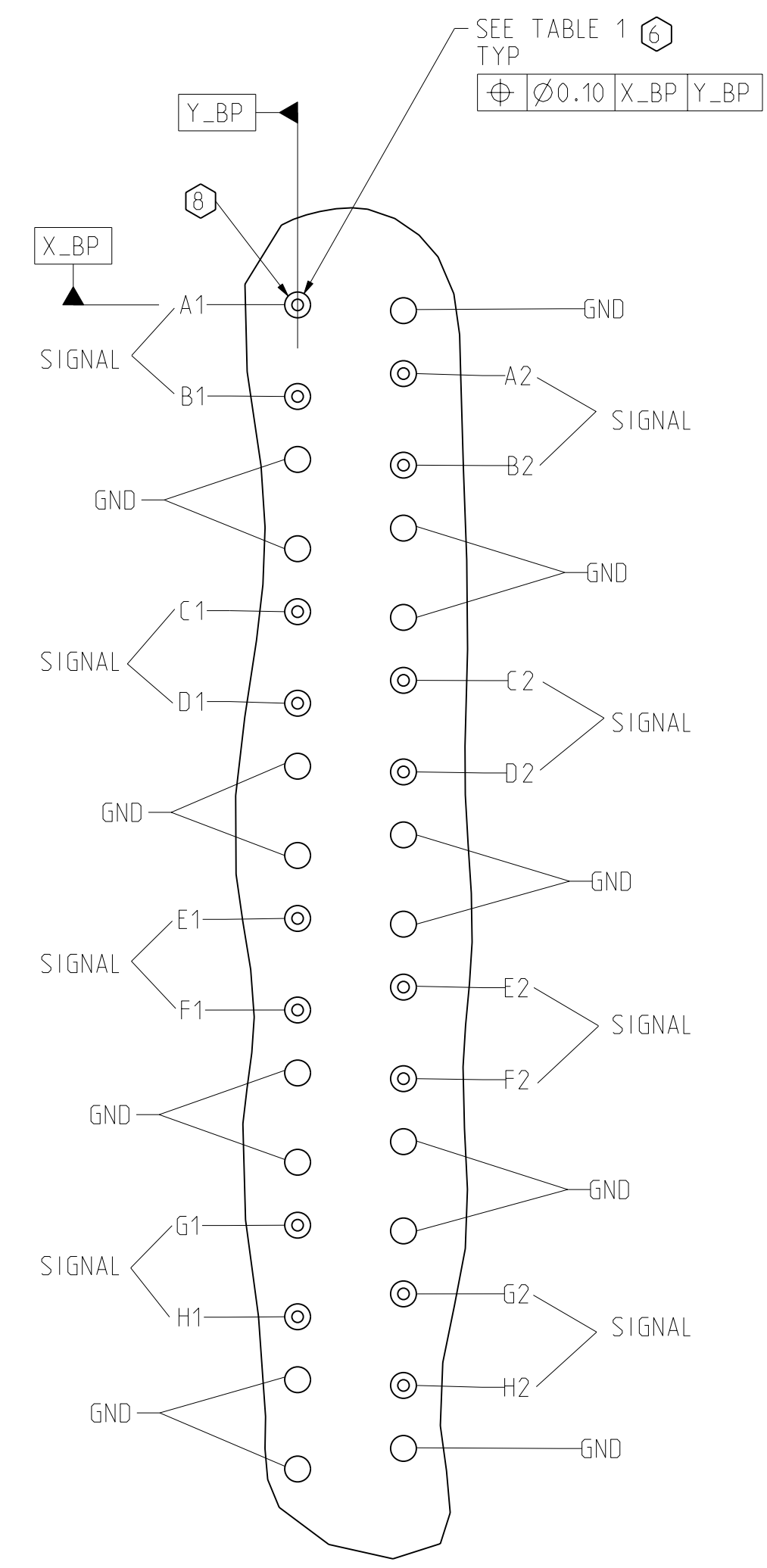
TWO WALL BACKPLANE FOOTPRINT

| TOLERANCES | | DESIGN | DATE | Amphenol TCS | |
|---|-------|-----------|------------|--|--|
| 0.0 | ±0.25 | LEIGHTON | 10/04/2006 | A Division of Amphenol Corporation | |
| 0.00 | ±0.13 | LEIGHTON | 01/04/2006 | 200 Innovative Way, Nashua, NH 03062 603.879.3000 | |
| 0.000 | ± - | A.PFAHNL | 10/05/2006 | TITLE BACKPLANE MODULES, VERTICAL MALE HEADER XCode, 4 PAIR 6 POSITION | |
| ANGLES | ± 3° | A.PFAHNL | 10/06/2006 | PART NO. SEE PN TREE SHEET 1 REV N/A | |
| UNLESS OTHERWISE SPECIFIED DIMENSIONS ARE IN MM, DECIMAL MARKER IS PERIOD | | | | DRAWING NO. C951-400C-500 REV B | |
| INTERPRET PER ASME Y14.5M CODE IDENT 31413 | | | | ProE ASSEM C951-4-BP4 C951-400C-500.drw 14.7 B.O | |
| CUSTOMER USE DRAWING | | SCALE 4/1 | | SHEET 7 OF 8 | |

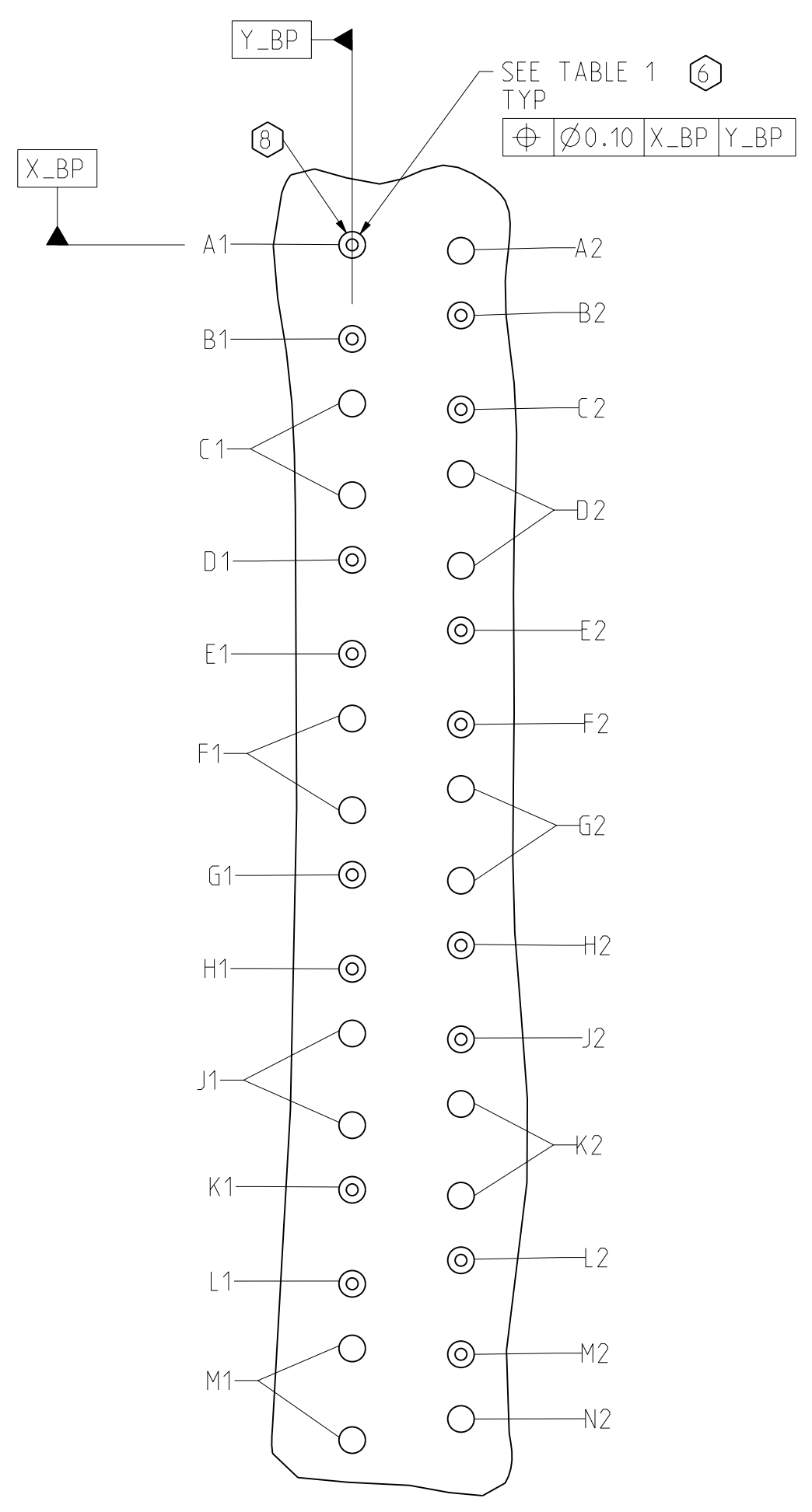
DRW NO. C951-400C-500

SH 7 REV B

| ZONE | REV | SCR NUMBER | DESCRIPTION | BY | DATE | APPROVED |
|------|-----|------------|-------------|----|------|----------|
| | | | SEE SHEET 1 | | | |



DETAIL A
HSD PINOUTS
SCALE 10/1



DETAIL B
LC PINOUTS
SCALE 10/1

| | COMPLIANT PIN DRILL $\varnothing 0.0217''$ | COMPLIANT PIN DRILL $\varnothing 0.0177''$ |
|-------|---|---|
| PTH | $\varnothing 0.45 \pm 0.05$ | $\varnothing 0.36 \pm 0.05$ |
| DRILL | $\varnothing 0.55 [0.0217'']$ | $\varnothing 0.45 [0.0177'']$ |
| PAD | $\varnothing 0.85$ | $\varnothing 0.75$ |

| | | | | | | |
|------------|---------------|-------------------------------|--|--|---|-------------|
| TOLERANCES | | DESIGN 10/04/2006 LEIGHTON | Amphenol TCS A Division of Amphenol Corporation 200 Innovative Way, Nashua, NH 03062 603.879.3000 | TITLE | BACKPLANE MODULES, VERTICAL MALE HEADER XCede, 4 PAIR 6 POSITION | |
| 0.0 | ± 0.25 | DRAWN 01/04/2006 LEIGHTON | | PART NO. | SEE PN TREE SHEET 1 | REV N/A |
| 0.00 | ± 0.13 | CHK 10/05/2006 A.PFAHNL | | DRAWING NO. | C951-400C-500 | REV B |
| 0.000 | $\pm -$ | APVD 10/06/2006 A.PFAHNL | | UNLESS OTHERWISE SPECIFIED DIMENSIONS ARE IN MM. DECIMAL MARKER IS PERIOD | ProE ASSEM C951-4--BP4 C951-400C-500.drw | 14.7 B.0 |
| ANGLES | $\pm 3^\circ$ | | CUSTOMER USE DRAWING | | SIZE D SCALE 4/1 SHEET 8 OF 8 | |

INTERPRET PER ASME Y14.5M
CODE IDENT 31413

C951-400C-500

SH 8
REV B



Стандарт Электрон Связь

Мы молодая и активно развивающаяся компания в области поставок электронных компонентов. Мы поставляем электронные компоненты отечественного и импортного производства напрямую от производителей и с крупнейших складов мира.

Благодаря сотрудничеству с мировыми поставщиками мы осуществляем комплексные и плановые поставки широчайшего спектра электронных компонентов.

Собственная эффективная логистика и склад в обеспечивает надежную поставку продукции в точно указанные сроки по всей России.

Мы осуществляем техническую поддержку нашим клиентам и предпродажную проверку качества продукции. На все поставляемые продукты мы предоставляем гарантию .

Осуществляем поставки продукции под контролем ВП МО РФ на предприятия военно-промышленного комплекса России , а также работаем в рамках 275 ФЗ с открытием отдельных счетов в уполномоченном банке. Система менеджмента качества компании соответствует требованиям ГОСТ ISO 9001.

Минимальные сроки поставки, гибкие цены, неограниченный ассортимент и индивидуальный подход к клиентам являются основой для выстраивания долгосрочного и эффективного сотрудничества с предприятиями радиоэлектронной промышленности, предприятиями ВПК и научно-исследовательскими институтами России.

С нами вы становитесь еще успешнее!

Наши контакты:

Телефон: +7 812 627 14 35

Электронная почта: sales@st-electron.ru

Адрес: 198099, Санкт-Петербург,
Промышленная ул, дом № 19, литера Н,
помещение 100-Н Офис 331