

# Vectorbord® Extenders



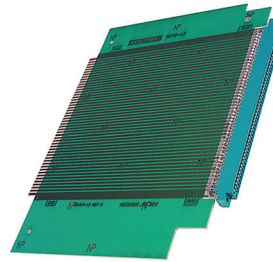
ELECTRONICS & TECHNOLOGY, INC.

## Card Edge Extenders

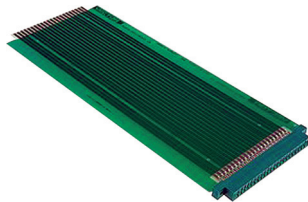
Vectorbord® extender cards provide convenient access to functioning circuit boards for testing. Engineered for quality, Vectorbord® extenders include low insertion force and gold-plated contacts for reliable connection and minimum wear on board.



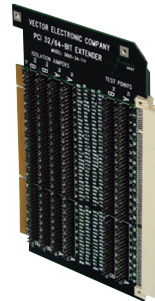
**3690**  
 Extension length 6.5"  
 22 contacts per side on 0.156" centers  
 Fits Vector Series 12 or 13 Subracks  
 Current rating: 5 amps at 10° F rise  
 Voltage rating: 200 RMS or 300 VDC  
 Trace Width: 0.092"  
 Capacitance: Between traces, 9.0pf  
 Length of trace: 4.5pf



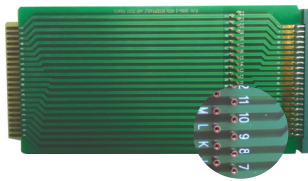
**3690-12** **S100**  
 Extension length: 7.5"  
 50 contacts per side on 0.125" centers  
 Double sided controlled impedance board  
 High reliability, gold plated connector (mounted)  
 Contact fingers on card are nickel/gold-plated  
 2 oz. copper clad, flame retardant epoxy glass composite material - 94V-O-UL classification  
 Current rating: 5 amps at 10° F rise  
 Voltage rating: 200 RMS or 300 VDC



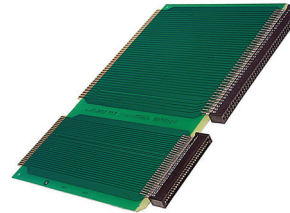
**3690-6**  
 Extension length 11.0"  
 22 contacts per side on 0.156" centers  
 Fits Vector Series 14 Subracks  
 Current rating: 5 amps at 10° F rise  
 Voltage rating: 200 RMS or 300 VDC  
 Trace Width: 0.092"  
 Capacitance: Between traces, 15.0pf  
 Length of trace: 8.0pf



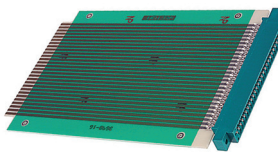
**3690-34-3V or 3690-34-5V** **PCI**  
 Extender card for PCI expansion card uses the "universal" pattern for 32/64 bits in the "short-card" size  
 Extenders are size and pin compatible with both 5.0V & 3.3V versions respectively  
 Length: 6.875" (174.6mm)  
 Contacts: 120 Ni/Gold, 0.050" centers (2x60 tabs removed in two areas for keying space)  
 Height: 4.2" (106.7mm)  
 Layers: 4 Power layers may use 3.3V or 5.0V  
 Decoupling Caps: Installed. .1mf, 20%  
 Mounting Bracket: Included



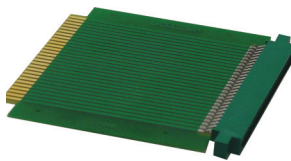
**3690-3**  
 Extension length 9.0"  
 22 contacts per side on 0.156" centers  
 R32 series test points for measuring power or signals, test points numbered and lettered to match connector.  
 Fits Vector Series 12 or 13 Subracks  
 Current rating: 5 amps at 10° F rise  
 Voltage rating: 200 RMS or 300 VDC  
 Trace Width: 0.092"  
 Capacitance: Between traces, 9.0pf  
 Length of trace: 4.5pf



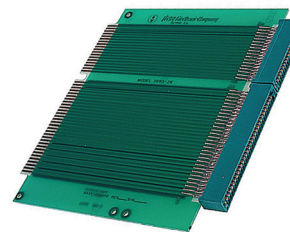
**3690-18** **Multibus**  
 Extension length: 7.65"  
 Double sided controlled impedance board  
 30 contacts each side on 0.100" centers and 43 contacts per side on 0.156" centers  
 Reliable gold plated connector mounted on top and connected to circuit traces  
 Nickel/gold-plated fingers on extender card  
 Current rating: 5 amps at 10° F rise  
 Voltage rating: 200 RMS or 300 VDC  
 Material: FR4, 2 oz copper clad  
 Also functions as cable terminator or experimental plugboard



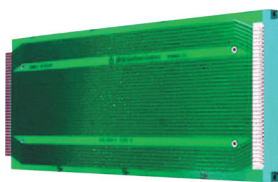
**3690-16** **STDbus**  
 Extension length: 6.5"  
 28 contacts per side on 0.125" centers  
 Fits Vector Series 12 or 13 Subracks  
 Also fits STD bus specifications  
 Current rating: 5 amps at 10° F rise  
 Voltage rating: 200 RMS or 300 VDC  
 Trace Width: 0.079"  
 Capacitance: Between traces, 9.0pf  
 Length of trace: 4.5pf



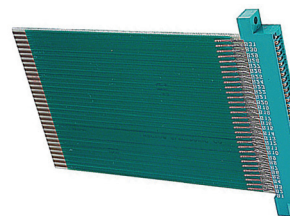
**3690-17** **STDbus**  
 Extension length 4.25"  
 28 contacts per side on 0.125" centers  
 Fits Vector Series 12 Subrack only  
 Also fits STD-bus specifications  
 Current rating: 5 amps at 10° F rise  
 Voltage rating: 200 RMS or 300 VDC  
 Trace Width: 0.062"  
 Capacitance: Between traces, 9.0pf  
 Length of trace: 4.5pf



**3690-26** **IBM AT-ISA**  
 Extension length: 5.6"  
 Double sided controlled impedance board  
 18/31 contacts each side on 0.100" centers  
 Current rating: 5 amps at 10° F rise  
 Voltage rating: 200 RMS or 300 VDC  
 Test points for mounting probes on each connector line  
 Also available 3690-26-1 multilayer extender with decoupling capacitors



**3690-2**  
 Extension length: 11.0"  
 36 contacts per side on 0.10" centers  
 Fits Vector Series 14 Subracks  
 Current rating: 5 amps at 10° F rise  
 Voltage rating: 200 RMS or 300 VDC  
 Trace Width: 0.062"  
 Capacitance: Between traces, 18.0pf  
 Length of trace: 6.3pf



**3690-22** **IBM PC, XT**  
 Extension length: 5.7"  
 Double sided controlled impedance board  
 31 contacts each side on 0.100" centers  
 Test points for mounting probes on each connector line  
 Current rating: 5 amps at 10° F rise  
 Voltage rating: 200 RMS or 300 VDC  
 Flame retardant laminate construction, 2 oz copper clad

Extenders

For a list of mating Vector Edge Connectors please see pages 69 and 70.

www.vectorelect.com

800-423-5659





## Стандарт Электрон Связь

Мы молодая и активно развивающаяся компания в области поставок электронных компонентов. Мы поставляем электронные компоненты отечественного и импортного производства напрямую от производителей и с крупнейших складов мира.

Благодаря сотрудничеству с мировыми поставщиками мы осуществляем комплексные и плановые поставки широчайшего спектра электронных компонентов.

Собственная эффективная логистика и склад в обеспечивает надежную поставку продукции в точно указанные сроки по всей России.

Мы осуществляем техническую поддержку нашим клиентам и предпродажную проверку качества продукции. На все поставляемые продукты мы предоставляем гарантию .

Осуществляем поставки продукции под контролем ВП МО РФ на предприятия военно-промышленного комплекса России , а также работаем в рамках 275 ФЗ с открытием отдельных счетов в уполномоченном банке. Система менеджмента качества компании соответствует требованиям ГОСТ ISO 9001.

Минимальные сроки поставки, гибкие цены, неограниченный ассортимент и индивидуальный подход к клиентам являются основой для выстраивания долгосрочного и эффективного сотрудничества с предприятиями радиоэлектронной промышленности, предприятиями ВПК и научно-исследовательскими институтами России.

С нами вы становитесь еще успешнее!

### Наши контакты:

**Телефон:** +7 812 627 14 35

**Электронная почта:** [sales@st-electron.ru](mailto:sales@st-electron.ru)

**Адрес:** 198099, Санкт-Петербург,  
Промышленная ул, дом № 19, литера Н,  
помещение 100-Н Офис 331