

| PART NUMBER | LED COLOR | |
|---------------|----------------------------|----------------------------|
| | POSITION 1 | POSITION 2 |
| 569-0111-000F | RED TINTED DIFFUSED | BLANK |
| 569-0111-100F | RED TINTED DIFFUSED | RED TINTED DIFFUSED |
| 569-0111-200F | RED TINTED DIFFUSED | GREEN TINTED DIFFUSED |
| 569-0111-300F | RED TINTED DIFFUSED | YELLOW TINTED DIFFUSED |
| 569-0111-700F | RED TINTED DIFFUSED | ORANGE TINTED DIFFUSED |
| 569-0111-900F | RED TINTED DIFFUSED | BLUE; WHITE DIFFUSED |
| 569-0112-000F | GREEN TINTED DIFFUSED | BLANK |
| 569-0112-100F | GREEN TINTED DIFFUSED | RED TINTED DIFFUSED |
| 569-0112-200F | GREEN TINTED DIFFUSED | GREEN TINTED DIFFUSED |
| 569-0112-300F | GREEN TINTED DIFFUSED | YELLOW TINTED DIFFUSED |
| 569-0112-700F | GREEN TINTED DIFFUSED | ORANGE TINTED DIFFUSED |
| 569-0113-100F | YELLOW TINTED DIFFUSED | RED TINTED DIFFUSED |
| 569-0113-200F | YELLOW TINTED DIFFUSED | GREEN TINTED DIFFUSED |
| 569-0113-300F | YELLOW TINTED DIFFUSED | YELLOW TINTED DIFFUSED |
| 569-0117-000F | ORANGE TINTED DIFFUSED | BLANK |
| 569-0117-700F | ORANGE TINTED DIFFUSED | ORANGE TINTED DIFFUSED |
| 569-0119-900F | BLUE; WHITE DIFFUSED | BLUE; WHITE DIFFUSED |
| 569-0211-100F | RED DIFFUSED; 2mA LC | RED DIFFUSED; 2mA LC |
| 569-0211-300F | RED DIFFUSED; 2mA LC | YELLOW DIFFUSED; 2mA LC |
| 569-0212-200F | GREEN DIFFUSED; 2mA LC | GREEN DIFFUSED; 2mA LC |
| 569-0212-300F | GREEN DIFFUSED; 2mA LC | YELLOW DIFFUSED; 2mA LC |
| 569-0213-300F | YELLOW DIFFUSED; 2mA LC | YELLOW DIFFUSED; 2mA LC |
| 569-0311-100F | RED DIFF; 5V INT RES | RED DIFF; 5V INT RES |
| 569-0312-200F | GREEN DIFF; 5V INT RES | GREEN DIFF; 5V INT RES |
| 569-0312-300F | GREEN DIFF; 5V INT RES | YELLOW DIFF; 5V INT RES |
| 569-0313-300F | YELLOW DIFF; 5V INT RES | YELLOW DIFF; 5V INT RES |
| 569-0711-100F | R/G BI-COLOR; WHITE DIFF | R/G BI-COLOR; WHITE DIFF |
| 569-0711-400F | R/G BI-COLOR; WHITE DIFF | Y/G BI-COLOR; WHITE DIFF |
| 569-0714-100F | Y/G BI-COLOR; WHITE DIFF | R/G BI-COLOR; WHITE DIFF |
| 569-0714-400F | Y/G BI-COLOR; WHITE DIFF | Y/G BI-COLOR; WHITE DIFF |
| 569-2211-100F | RED TINTED NON-DIFFUSED | RED TINTED NON-DIFFUSED |
| 569-2212-200F | GREEN TINTED NON-DIFFUSED | GREEN TINTED NON-DIFFUSED |
| 569-2213-300F | YELLOW TINTED NON-DIFFUSED | YELLOW TINTED NON-DIFFUSED |

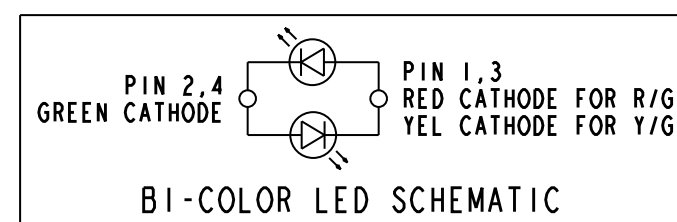
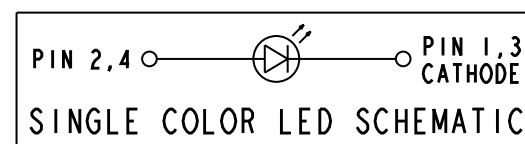
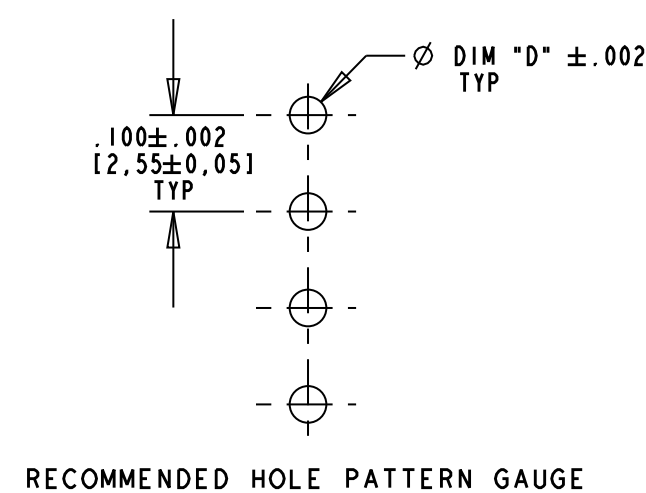
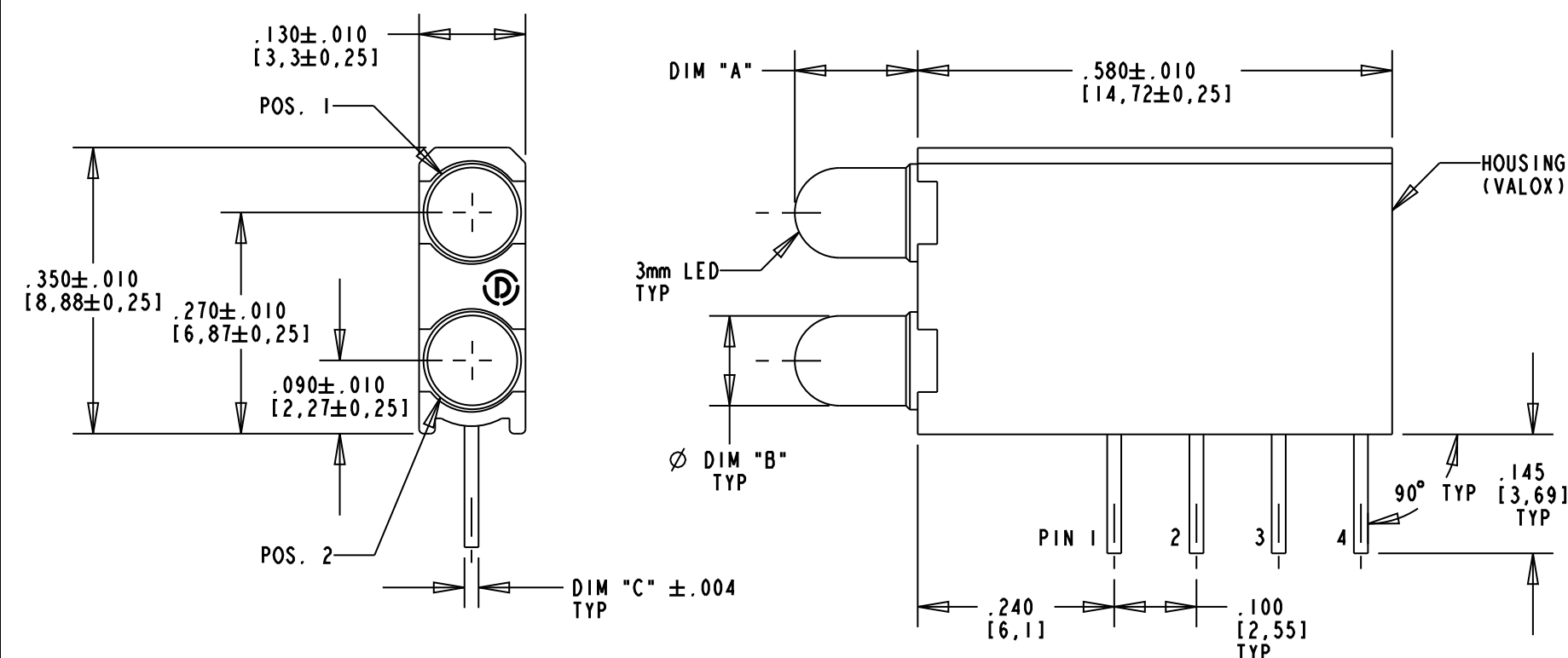
RoHS Compliant 569-XXIX-X00F Bi-Level Thru hole CBI
 Part Numbers with the "F" suffix ending are RoHS Compliant.
 For Example: 569-0112-700F
 The bag packaging is marked with "RoHS Compliant" label or equivalent markings. Parts can be wave soldered, dip soldered, or hand soldered using typical lead-free soldering process with max 260°C temp. for 5 sec.



ATTENTION:
 OBSERVE PRECAUTIONS FOR
 HANDLING ELECTROSTATIC
 SENSITIVE DEVICES

| REV | ECN NO | REVISIONS | DRN | CKD | APP | DATE |
|-----|--------|--|-----|-----|------|----------|
| A | | NEW RELEASE | TWC | MES | N.O. | 12-14-05 |
| B | | ADDED P/N 569-0111-000F; UPDATED ESD NOTATION | TWC | MES | N.O. | 3-1-06 |
| C | | ADDED P/N'S 569-2211-100F, 569-2212-200F, & 569-2213-300F; UPDATED TOLERANCES; ADDED NOTES 3, 4, & 5; ADDED DOM WAVELENGTH. | KLJ | ALV | N.O. | 6-8-09 |
| D | | ADDED P/N 569-0111-300F | AJF | KLJ | NO | 9-22-10 |

| LED COLOR | DIM "A" | DIM "B" | DIM "C" | DIM "D" | OPERATING CHARACTERISTICS AT 25°C AMBIENT | | | | | | | | | | | | | | | |
|--------------------------------|--------------|-----------|-------------|-------------|---|-----------|------|-------------------------------------|-----------|-----------------|-----|--------------------------|-----|-----|----------------------|-----|---------------------|-----|-----|----|
| | | | | | LUMINOUS INTENSITY TEST CONDITION | | | FORWARD VOLTAGE / CURRENT TEST COND | | REVERSE CURRENT | | DOMINANT WAVELENGTH (nm) | | | PEAK WAVELENGTH (nm) | | VIEWING ANGLE (DEG) | | | |
| | | | | | MIN | TYP | MAX | TYP | MAX | TYP | MAX | MAX | MIN | TYP | MAX | TYP | TYP | | | |
| RED TINTED DIFFUSED | .150 | .118±.010 | .018 x .016 | .040 | IF = 10mA | 7.4 | 10 | — | IF = 20mA | 2.0 | 2.8 | — | — | 100 | — | 623 | — | 635 | 60 | |
| GREEN TINTED DIFFUSED | .150 | .118±.010 | .018 x .016 | .040 | IF = 10mA | 4.7 | 12.6 | — | IF = 20mA | 2.1 | 2.8 | — | — | 100 | — | 569 | — | 565 | 60 | |
| YELLOW TINTED DIFFUSED | .150 | .118±.010 | .018 x .016 | .040 | IF = 10mA | 7.4 | 10 | — | IF = 20mA | 2.1 | 2.8 | — | — | 100 | — | 588 | — | 585 | 60 | |
| ORANGE TINTED DIFFUSED | .150 | .115±.010 | .018 SQ. | .040 | IF = 10mA | 3.4 | 7.4 | 10.8 | IF = 10mA | 1.9 | 2.4 | — | — | 100 | 597 | 602 | 620 | 600 | 60 | |
| BLUE; WHITE DIFFUSED | .156 | .110±.005 | .020 SQ. | .043 | IF = 10mA | 7.1 | 12.5 | 18 | IF = 10mA | 3.5 | 4.1 | — | — | 10 | 462 | 465 | 468 | 428 | 70 | |
| RED TINTED DIFFUSED; 2mA LC | .150 | .118±.010 | .018 x .016 | .040 | IF = 2mA | 1.0 | 1.6 | — | IF = 2mA | 1.7 | 2.2 | — | — | 10 | — | 623 | — | 635 | 60 | |
| GREEN TINTED DIFFUSED; 2mA LC | .150 | .118±.010 | .018 x .016 | .040 | IF = 2mA | 1.0 | 1.6 | — | IF = 2mA | 1.9 | 2.2 | — | — | 10 | — | 569 | — | 565 | 60 | |
| YELLOW TINTED DIFFUSED; 2mA LC | .150 | .118±.010 | .018 x .016 | .040 | IF = 2mA | 1.0 | 1.6 | — | IF = 2mA | 1.8 | 2.7 | — | — | 10 | — | 588 | — | 585 | 60 | |
| RED TINTED DIFF; 5V INT RES | .150 | .118±.010 | .018 x .016 | .040 | Vf = 5V | 8.7 | 29 | — | Vf = 5V | — | — | 10 | 20 | 100 | — | 623 | — | 635 | 60 | |
| GREEN TINTED DIFF; 5V INT RES | .150 | .118±.010 | .018 x .016 | .040 | Vf = 5V | 5.6 | 19 | — | Vf = 5V | — | — | 10 | 20 | 100 | — | 569 | — | 565 | 60 | |
| YELLOW TINTED DIFF; 5V INT RES | .150 | .118±.010 | .018 x .016 | .040 | Vf = 5V | 3.7 | 12.6 | — | Vf = 5V | — | — | 10 | 20 | 100 | — | 588 | — | 585 | 60 | |
| R/G BI-COLOR, WHITE DIFFUSED | RED GREEN | .150 | .118±.010 | .020 SQ. | .043 | IF = 10mA | 2.5 | 4.7 | — | IF = 20mA | 2.0 | 2.8 | — | — | 100 | — | 621 | — | 635 | 60 |
| | | | | | | | 3.7 | 10 | — | | — | — | — | 100 | — | 569 | — | 565 | 60 | |
| Y/G BI-COLOR, WHITE DIFFUSED | YELLOW GREEN | .150 | .118±.010 | .018 x .016 | .040 | IF = 10mA | 2.5 | 4.3 | — | IF = 20mA | 2.1 | 2.8 | — | — | 100 | 583 | 586 | 589 | 585 | 80 |
| | | | | | | | 2.5 | 6.3 | — | | — | — | — | 100 | — | 569 | — | 565 | 80 | |
| RED TINTED NON-DIFFUSED | .150 | .118±.010 | .018 x .016 | .040 | IF = 10mA | 8.7 | 29 | — | IF = 20mA | 2.0 | 2.8 | — | — | 100 | — | 623 | — | 635 | 45 | |
| GREEN TINTED NON-DIFFUSED | .150 | .118±.010 | .018 x .016 | .040 | IF = 10mA | 32 | 50 | — | IF = 20mA | 2.1 | 2.8 | — | — | 100 | — | 569 | — | 565 | 45 | |
| YELLOW TINTED DIFFUSED | .150 | .118±.010 | .018 x .016 | .040 | IF = 10mA | 10 | 30 | 50 | IF = 20mA | 2.1 | 2.8 | — | — | 100 | — | 588 | — | 585 | 45 | |



| LED COLOR | ABSOLUTE MAXIMUM RATINGS AT 25°C AMBIENT | | | | | | | | | |
|--------------------------------|--|------------------------|------------------------|-----------------------|----------------------|----------------------|----------------------------------|-----------------------|---------------------|---------------|
| | POWER DISSIPATION (mW) | CONT. FWD CURRENT (mA) | DC FORWARD VOLTAGE (V) | PEAK FWD CURRENT (mA) | LINEAR DERATION | REVERSE VOLTAGE (V) | SOLDERING TEMPERATURE FOR 5 SEC. | OPERATING TEMPERATURE | STORAGE TEMPERATURE | |
| RED TINTED DIFFUSED | 100 | 30 | — | 120 | 0.4 mA/°C FROM 50°C | 5 | 260 °C | -55°C /+100°C | -55°C /+100°C | |
| GREEN TINTED DIFFUSED | 100 | 30 | — | 120 | 0.4 mA/°C FROM 50°C | 5 | 260 °C | -55°C /+100°C | -55°C /+100°C | |
| YELLOW TINTED DIFFUSED | 60 | 20 | — | 80 | 0.25 mA/°C FROM 50°C | 5 | 260 °C | -55°C /+100°C | -55°C /+100°C | |
| ORANGE TINTED DIFFUSED | 135 | 25 | — | 90 | 0.5 mA/°C FROM 50°C | 5 | 260 °C | -55°C /+100°C | -55°C /+100°C | |
| BLUE; WHITE DIFFUSED | 90 | 20 | — | 200 | 0.44 mA/°C FROM 50°C | 5 | 260 °C | -55°C /+100°C | -55°C /+100°C | |
| RED TINTED DIFFUSED; 2mA LC | 20 | 7 | — | 500 | 0.7 mA/°C FROM 90°C | 5 | 260 °C | -55°C /+100°C | -55°C /+100°C | |
| GREEN TINTED DIFFUSED; 2mA LC | 20 | 7 | — | 500 | 0.7 mA/°C FROM 90°C | 5 | 260 °C | -55°C /+100°C | -55°C /+100°C | |
| YELLOW TINTED DIFFUSED; 2mA LC | 20 | 7 | — | 500 | 0.7 mA/°C FROM 90°C | 5 | 260 °C | -55°C /+100°C | -55°C /+100°C | |
| RED TINTED DIFF; 5V INT RES | — | — | 7.5 | — | 0.086 V/°C FROM 50°C | 5 | 260 °C | -40°C /+85°C | -55°C /+100°C | |
| GREEN TINTED DIFF; 5V INT RES | — | — | 7.5 | — | 0.086 V/°C FROM 50°C | 5 | 260 °C | -40°C /+85°C | -55°C /+100°C | |
| YELLOW TINTED DIFF; 5V INT RES | — | — | 7.5 | — | 0.086 V/°C FROM 50°C | 5 | 260 °C | -40°C /+85°C | -55°C /+100°C | |
| R/G BI-COLOR, WHITE DIFFUSED | 100 | 30 | — | 120 | 0.4 mA/°C FROM 50°C | 5 | 260 °C | -55°C /+100°C | -55°C /+100°C | |
| | Y/G BI-COLOR, WHITE DIFFUSED | 60 | 20 | — | 80 | 0.25 mA/°C FROM 50°C | 5 | 260 °C | -55°C /+100°C | -55°C /+100°C |
| RED TINTED NON-DIFFUSED | 100 | 30 | — | 120 | 0.4 mA/°C FROM 50°C | 5 | 260 °C | -55°C /+100°C | -55°C /+100°C | |
| GREEN TINTED NON-DIFFUSED | 100 | 30 | — | 120 | 0.4 mA/°C FROM 50°C | 5 | 260 °C | -55°C /+100°C | -55°C /+100°C | |
| YELLOW TINTED DIFFUSED | 60 | 20 | — | 80 | 0.25 mA/°C FROM 50°C | 5 | 260 °C | -55°C /+100°C | -55°C /+100°C | |

NOTES

- DIALIGHT PART NUMBER: 569-XXIX-X00F
- THIS ASSEMBLY CONTAINS ELECTROSTATIC DISCHARGE SENSITIVE DEVICES (ESDS). MAINTAIN ALL PRECAUTIONARY MEASURES DURING ASSEMBLY, HANDLING, AND STORAGE IN ACCORDANCE WITH IPC-A-610.
- LED LEAD DIMENSIONS SHOWN ARE MEASURED AT HOUSING EXIT.
- LEADS TO FIT INTO HOLES SPACED AS PER PATTERN.
- PIN NUMBERS FOR REFERENCE ONLY, DESIGNATION NON-EXISTENT ON PART.

THIS DRAWING AND THE CONTENTS HEREIN ARE CONFIDENTIAL AND THE SOLE PROPERTY OF DIALIGHT. REPRODUCTION OF THIS DRAWING OR CONSTRUCTION OF ANY PARTS WITHIN THIS DRAWING ARE FORBIDDEN WITHOUT THE WRITTEN CONSENT OF DIALIGHT.

SCALE: 5.000
 ALL DIM'S IN: INCHES (MM)
 TOLERANCES: UNLESS OTHERWISE SPECIFIED
 FRACTIONS: ±1/64
 DECIMALS (.XX): ±.02
 DECIMALS (.XXX): ±.015
 ANGLES: ±3°
 FINISH:

DRAWING NUMBER: C-17339
 REV: D

TITLE: BI-LEVEL CBI
 MATERIAL: RoHS COMPLIANT

Dialight
 1501 ROUTE 34 SOUTH
 FARMINGDALE, NJ 07727

FSCM 83330
 SHEET 1 OF 1 FAMILY TABLE:



Стандарт Электрон Связь

Мы молодая и активно развивающаяся компания в области поставок электронных компонентов. Мы поставляем электронные компоненты отечественного и импортного производства напрямую от производителей и с крупнейших складов мира.

Благодаря сотрудничеству с мировыми поставщиками мы осуществляем комплексные и плановые поставки широчайшего спектра электронных компонентов.

Собственная эффективная логистика и склад в обеспечивает надежную поставку продукции в точно указанные сроки по всей России.

Мы осуществляем техническую поддержку нашим клиентам и предпродажную проверку качества продукции. На все поставляемые продукты мы предоставляем гарантию .

Осуществляем поставки продукции под контролем ВП МО РФ на предприятия военно-промышленного комплекса России , а также работаем в рамках 275 ФЗ с открытием отдельных счетов в уполномоченном банке. Система менеджмента качества компании соответствует требованиям ГОСТ ISO 9001.

Минимальные сроки поставки, гибкие цены, неограниченный ассортимент и индивидуальный подход к клиентам являются основой для выстраивания долгосрочного и эффективного сотрудничества с предприятиями радиоэлектронной промышленности, предприятиями ВПК и научно-исследовательскими институтами России.

С нами вы становитесь еще успешнее!

Наши контакты:

Телефон: +7 812 627 14 35

Электронная почта: sales@st-electron.ru

Адрес: 198099, Санкт-Петербург,
Промышленная ул, дом № 19, литера Н,
помещение 100-Н Офис 331