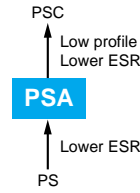


NPCAP™-PSA Series

- Super low ESR, high temperature resistance and high ripple current capability
- Rated voltage range : 2.5 to 16V_{dc}
- Endurance : 2,000 hours at 105°C
- Suitable for DC-DC converters, voltage regulators and decoupling applications for computer motherboards
- RoHS Compliant



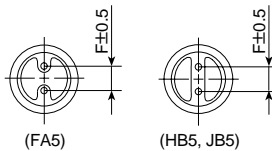
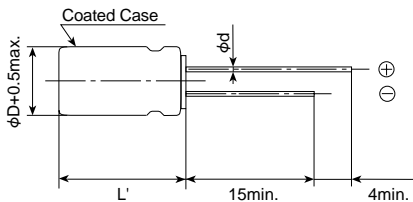
◆ SPECIFICATIONS

| Items | Characteristics | | | | | | | | | | |
|--|---|------------|-----------------------|--------------------|-----------------------------|-------------|---------------------------------------|-----|---------------------------------------|-----------------|-------------------------------|
| Category | | | | | | | | | | | |
| Temperature Range | -55 to +105°C | | | | | | | | | | |
| Rated Voltage Range | 2.5 to 16V _{dc} | | | | | | | | | | |
| Capacitance Tolerance | ±20% (M) (at 20°C, 120Hz) | | | | | | | | | | |
| Surge Voltage | Rated voltage×1.15 (at 105°C) | | | | | | | | | | |
| Leakage Current | I=0.2CV | | | | | | | | | | |
| *Note | Where, I : Max. leakage current (μA), C : Nominal capacitance (μF), V : Rated voltage (V _{dc}) (at 20°C after 2 minutes) | | | | | | | | | | |
| Dissipation Factor (tanδ) | 0.08 max. (FA5 size : 0.12max.) (at 20°C, 120Hz) | | | | | | | | | | |
| Low Temperature Characteristics (Max. Impedance Ratio) | Z(-25°C)/Z(+20°C) ≤ 1.15 Z(-55°C)/Z(+20°C) ≤ 1.25 (at 100kHz) | | | | | | | | | | |
| Endurance | The following specifications shall be satisfied when the capacitors are restored to 20°C after the rated voltage is applied for 2,000 hours at 105°C. | | | | | | | | | | |
| | <table border="1"> <tr><td>Appearance</td><td>No significant damage</td></tr> <tr><td>Capacitance change</td><td>≤ ±20% of the initial value</td></tr> <tr><td>D.F. (tanδ)</td><td>≤ 150% of the initial specified value</td></tr> <tr><td>ESR</td><td>≤ 150% of the initial specified value</td></tr> <tr><td>Leakage current</td><td>≤ The initial specified value</td></tr> </table> | Appearance | No significant damage | Capacitance change | ≤ ±20% of the initial value | D.F. (tanδ) | ≤ 150% of the initial specified value | ESR | ≤ 150% of the initial specified value | Leakage current | ≤ The initial specified value |
| Appearance | No significant damage | | | | | | | | | | |
| Capacitance change | ≤ ±20% of the initial value | | | | | | | | | | |
| D.F. (tanδ) | ≤ 150% of the initial specified value | | | | | | | | | | |
| ESR | ≤ 150% of the initial specified value | | | | | | | | | | |
| Leakage current | ≤ The initial specified value | | | | | | | | | | |
| Bias Humidity Test | The following specifications shall be satisfied when the capacitors are restored to 20°C after subjecting them to DC voltage at 60°C, 90 to 95% RH for 1,000 hours. | | | | | | | | | | |
| | <table border="1"> <tr><td>Appearance</td><td>No significant damage</td></tr> <tr><td>Capacitance change</td><td>≤ ±20% of the initial value</td></tr> <tr><td>D.F. (tanδ)</td><td>≤ 150% of the initial specified value</td></tr> <tr><td>ESR</td><td>≤ 150% of the initial specified value</td></tr> <tr><td>Leakage current</td><td>≤ The initial specified value</td></tr> </table> | Appearance | No significant damage | Capacitance change | ≤ ±20% of the initial value | D.F. (tanδ) | ≤ 150% of the initial specified value | ESR | ≤ 150% of the initial specified value | Leakage current | ≤ The initial specified value |
| Appearance | No significant damage | | | | | | | | | | |
| Capacitance change | ≤ ±20% of the initial value | | | | | | | | | | |
| D.F. (tanδ) | ≤ 150% of the initial specified value | | | | | | | | | | |
| ESR | ≤ 150% of the initial specified value | | | | | | | | | | |
| Leakage current | ≤ The initial specified value | | | | | | | | | | |
| Surge Voltage Test | The capacitors shall be subjected to 1,000 cycles each consisting of charge with the surge voltage specified at 105°C for 30 seconds through a protective resistor (R=1kΩ) and discharge for 5 minutes 30 seconds. | | | | | | | | | | |
| | <table border="1"> <tr><td>Appearance</td><td>No significant damage</td></tr> <tr><td>Capacitance change</td><td>≤ ±20% of the initial value</td></tr> <tr><td>D.F. (tanδ)</td><td>≤ 150% of the initial specified value</td></tr> <tr><td>ESR</td><td>≤ 150% of the initial specified value</td></tr> <tr><td>Leakage current</td><td>≤ The initial specified value</td></tr> </table> | Appearance | No significant damage | Capacitance change | ≤ ±20% of the initial value | D.F. (tanδ) | ≤ 150% of the initial specified value | ESR | ≤ 150% of the initial specified value | Leakage current | ≤ The initial specified value |
| Appearance | No significant damage | | | | | | | | | | |
| Capacitance change | ≤ ±20% of the initial value | | | | | | | | | | |
| D.F. (tanδ) | ≤ 150% of the initial specified value | | | | | | | | | | |
| ESR | ≤ 150% of the initial specified value | | | | | | | | | | |
| Leakage current | ≤ The initial specified value | | | | | | | | | | |
| Failure Rate | 0.5% per 1,000 hours maximum (Confidence level 60% at 105°C) | | | | | | | | | | |

*Note : If any doubt arises, measure the leakage current after the following voltage treatment.
Voltage treatment : DC rated voltage is applied to the capacitors for 120 minutes at 105°C.

◆ DIMENSIONS [mm]

- Terminal Code : E



| Size code | FA5 | HB5 | JB5 |
|-----------|-----------|----------|------|
| φD | 6.3 | 8.0 | 10.0 |
| φd | 0.5 | 0.8 | |
| F | 2.5 | 3.5 | 5.0 |
| φD' | φD+0.5max | | |
| L' | L+0.3max | L+1.5max | |

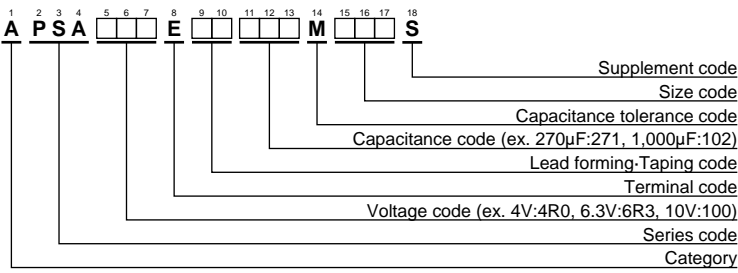
◆ MARKING

EX) 4V560μF



NPCAP™-PSA Series

◆PART NUMBERING SYSTEM



Please refer to "Product code guide (conductive polymer type)"

◆STANDARD RATINGS

| WV(Vdc) | Cap(μF) | Case size φD×L(mm) | ESR (mΩmax/20°C, 100k to 300kHz) | Rated ripple current (mArms/105°C, 100kHz) | Part No. |
|---------|---------|-----------------------|-------------------------------------|---|--------------------|
| 2.5 | 390 | 6.3×10.5 | 20 | 3,160 | APSA2R5E□□391MFA5S |
| | 680 | 8×11.5 | 7 | 5,580 | APSA2R5E□□681MHB5S |
| | 820 | 8×11.5 | 7 | 5,580 | APSA2R5E□□821MHB5S |
| | 1,000 | 10×11.5 | 6 | 5,860 | APSA2R5E□□102MJB5S |
| | 1,500 | 10×11.5 | 7 | 5,860 | APSA2R5E□□152MJB5S |
| 4 | 270 | 6.3×10.5 | 20 | 3,160 | APSA4R0E□□271MFA5S |
| | 390 | 6.3×10.5 | 24 | 3,300 | APSA4R0E□□391MFA5S |
| | 560 | 8×11.5 | 7 | 5,580 | APSA4R0E□□561MHB5S |
| | 820 | 10×11.5 | 6 | 5,860 | APSA4R0E□□821MJB5S |
| 6.3 | 220 | 6.3×10.5 | 20 | 3,160 | APSA6R3E□□221MFA5S |
| | 330 | 6.3×10.5 | 28 | 3,190 | APSA6R3E□□331MFA5S |
| | 390 | 8×11.5 | 8 | 5,080 | APSA6R3E□□391MHB5S |
| | 470 | 8×11.5 | 7 | 5,700 | APSA6R3E□□471MHB5S |
| | 680 | 10×11.5 | 7 | 5,860 | APSA6R3E□□681MJB5S |
| 10 | 47 | 6.3×10.5 | 25 | 2,820 | APSA100E□□470MFA5S |
| | 68 | 6.3×10.5 | 25 | 2,820 | APSA100E□□680MFA5S |
| | 100 | 6.3×10.5 | 25 | 2,820 | APSA100E□□101MFA5S |
| | 150 | 6.3×10.5 | 25 | 2,820 | APSA100E□□151MFA5S |
| | 270 | 8×11.5 | 9 | 4,710 | APSA100E□□271MHB5S |
| | 470 | 10×11.5 | 8 | 5,650 | APSA100E□□471MJB5S |
| 16 | 100 | 6.3×10.5 | 25 | 2,820 | APSA160E□□101MFA5S |

□□ : Enter the appropriate lead forming or taping code.



Стандарт Электрон Связь

Мы молодая и активно развивающаяся компания в области поставок электронных компонентов. Мы поставляем электронные компоненты отечественного и импортного производства напрямую от производителей и с крупнейших складов мира.

Благодаря сотрудничеству с мировыми поставщиками мы осуществляем комплексные и плановые поставки широчайшего спектра электронных компонентов.

Собственная эффективная логистика и склад в обеспечивает надежную поставку продукции в точно указанные сроки по всей России.

Мы осуществляем техническую поддержку нашим клиентам и предпродажную проверку качества продукции. На все поставляемые продукты мы предоставляем гарантию .

Осуществляем поставки продукции под контролем ВП МО РФ на предприятия военно-промышленного комплекса России , а также работаем в рамках 275 ФЗ с открытием отдельных счетов в уполномоченном банке. Система менеджмента качества компании соответствует требованиям ГОСТ ISO 9001.

Минимальные сроки поставки, гибкие цены, неограниченный ассортимент и индивидуальный подход к клиентам являются основой для выстраивания долгосрочного и эффективного сотрудничества с предприятиями радиоэлектронной промышленности, предприятиями ВПК и научно-исследовательскими институтами России.

С нами вы становитесь еще успешнее!

Наши контакты:

Телефон: +7 812 627 14 35

Электронная почта: sales@st-electron.ru

Адрес: 198099, Санкт-Петербург,
Промышленная ул, дом № 19, литера Н,
помещение 100-Н Офис 331