

Fast Recovery Diodes (Stud Version), 6 A, 12 A



DO-203AA (DO-4)

FEATURES

- Short reverse recovery time
- Low stored charge
- Wide current range
- Excellent surge capabilities
- Standard JEDEC® types
- Stud cathode and stud anode versions
- Fully characterized reverse recovery conditions
- Material categorization: for definitions of compliance please see www.vishay.com/doc?99912


RoHS
COMPLIANT

TYPICAL APPLICATIONS

- DC power supplies
- Inverters
- Converters
- Choppers
- Ultrasonic systems
- Freewheeling diodes

PRODUCT SUMMARY

| | |
|-----------------------|-----------------|
| $I_{F(AV)}$ | 6 A, 12 A |
| Package | DO-203AA (DO-4) |
| Circuit configuration | Single diode |

MAJOR RATINGS AND CHARACTERISTICS

| SYMBOL | TEST CONDITIONS | 1N3879(R) TO 1N3883(R) | 1N3889(R) TO 1N3893(R) | UNITS |
|---------------|-----------------|------------------------------------|------------------------------------|------------------|
| $I_{F(AV)}$ | | 6 ⁽¹⁾ | 12 ⁽¹⁾ | A |
| | T_C maximum | 100 | 100 | °C |
| $I_{F(RMS)}$ | | 9.5 | 19 | A |
| I_{FSM} | 50 Hz | 72 | 145 | A |
| | 60 Hz | 75 ⁽¹⁾ | 150 ⁽¹⁾ | |
| I^2t | 50 Hz | 26 | 103 | A ² s |
| | 60 Hz | 23 | 94 | |
| $I^2\sqrt{t}$ | | 363 | 856 | $I^2\sqrt{s}$ |
| V_{RRM} | Range | 50 to 400 ⁽¹⁾ | 50 to 400 ⁽¹⁾ | V |
| t_r | | See Recovery Characteristics table | See Recovery Characteristics table | ns |
| T_J | Range | -65 to +150 | -65 to +150 | °C |

Note
⁽¹⁾ JEDEC® registered values



ELECTRICAL SPECIFICATIONS

| VOLTAGE RATINGS | | | | | | |
|-----------------|--------------|---|---|--|---|---|
| TYPE NUMBER | VOLTAGE CODE | V _{RRM} , MAXIMUM REPETITIVE PEAK AND OFF-STATE VOLTAGE V | V _{RSM} , MAXIMUM NON-REPETITIVE PEAK VOLTAGE V | I _{RRM} MAXIMUM AT T _J = 25 °C µA | I _{RRM} MAXIMUM AT T _J = 100 °C mA | I _{RRM} MAXIMUM AT T _J = 150 °C mA |
| 1N3879(R) | - | 50 | 75 | 15 ⁽¹⁾ | 1.0 ⁽¹⁾ | 3.0 ⁽¹⁾ |
| 1N3880(R) | | 100 | 150 | | | |
| 1N3881(R) | | 200 | 250 | | | |
| 1N3882(R) | | 300 | 350 | | | |
| 1N3883(R) | | 400 | 450 | | | |
| 1N3889(R) | - | 50 | 75 | 25 ⁽¹⁾ | 3.0 ⁽¹⁾ | 5.0 ⁽¹⁾ |
| 1N3890(R) | | 100 | 150 | | | |
| 1N3891(R) | | 200 | 250 | | | |
| 1N3892(R) | | 300 | 350 | | | |
| 1N3893(R) | | 400 | 450 | | | |

Note

(1) JEDEC® registered values

| FORWARD CONDUCTION | | | | | | | |
|--|---------------------|---|----------------------------------|---|------------------------|------------------------|-------------------|
| PARAMETER | SYMBOL | TEST CONDITIONS | | | 1N3879(R) TO 1N3883(R) | 1N3889(R) TO 1N3893(R) | UNITS |
| Maximum average forward current at case temperature | I _{F(AV)} | 180° conduction, half sine wave DC | | | 6 ⁽¹⁾ | 12 ⁽¹⁾ | A |
| | | | | | 100 | 100 | °C |
| Maximum RMS current | I _{F(RMS)} | | | | 9.5 | 19 | A |
| Maximum peak, one-cycle non-repetitive forward current | I _{FSM} | t = 10 ms | No voltage reapplied | Sinusoidal half wave, initial T _J = 150 °C | 85 | 170 | |
| | | t = 8.3 ms | | | 90 | 180 | |
| | | t = 10 ms | 100 % V _{RRM} reapplied | | 72 | 145 | |
| | | t = 8.3 ms | | | 75 ⁽¹⁾ | 150 ⁽¹⁾ | |
| Maximum I ² t for fusing | I ² t | t = 10 ms | No voltage reapplied | | 36 | 145 | A ² s |
| | | t = 8.3 ms | | | 33 | 130 | |
| | | t = 10 ms | 100 % V _{RRM} reapplied | | 26 | 103 | |
| | | t = 8.3 ms | | | 23 | 94 | |
| Maximum I ² √t for fusing | I ² √t | t = 0.1 ms to 10 ms, no voltage reapplied | | | 363 | 1452 | A ² √s |
| Maximum forward voltage drop | V _{FM} | T _J = 25 °C; I _F = Rated I _{F(AV)} (DC) | | | 1.4 ⁽¹⁾ | 1.4 ⁽¹⁾ | V |
| | | T _C = 100 °C; I _{FM} = π × rated I _{F(AV)} | | | 1.5 ⁽¹⁾ | 1.5 ⁽¹⁾ | |

Note

(1) JEDEC® registered values



| RECOVERY CHARACTERISTICS | | | | | |
|---------------------------------|---------------|---|---------------------------|---------------------------|-------|
| PARAMETER | SYMBOL | TEST CONDITIONS | 1N3879(R) TO 1N3883(R) | 1N3889(R) TO 1N3893(R) | UNITS |
| Maximum reverse recovery time | t_{rr} | $T_J = 25\text{ }^\circ\text{C}$, $I_F = 1\text{ A}$ to $V_R = 30\text{ V}$, $di_F/dt = 100\text{ A}/\mu\text{s}$ | 150 | 150 | ns |
| | | $T_J = 25\text{ }^\circ\text{C}$, $di_F/dt = 25\text{ A}/\mu\text{s}$, $I_{FM} = \pi \times \text{rated } I_{F(AV)}$ | 300 ⁽¹⁾ | 300 ⁽¹⁾ | |
| Maximum peak recovery current | $I_{RM(REC)}$ | $I_{FM} = \pi \times \text{rated } I_{F(AV)}$ | 4 ⁽¹⁾ | 5 ⁽¹⁾ | - |
| Maximum reverse recovery charge | Q_{rr} | $T_J = 25\text{ }^\circ\text{C}$, $I_F = 1\text{ A}$ to $V_R = 30\text{ V}$, $di_F/dt = 100\text{ A}/\mu\text{s}$ | 400 | 350 | nC |
| | | $T_J = 25\text{ }^\circ\text{C}$, $di_F/dt = 25\text{ A}/\mu\text{s}$, $I_{FM} = \pi \times \text{rated } I_{F(AV)}$ | 400 | 400 | |



Note

⁽¹⁾ JEDEC® registered values

| THERMAL AND MECHANICAL SPECIFICATIONS | | | | | |
|--|------------|--|---------------------------|---------------------------|---------------------|
| PARAMETER | SYMBOL | TEST CONDITIONS | 1N3879(R) TO 1N3883(R) | 1N3889(R) TO 1N3893(R) | UNITS |
| Maximum junction operating temperature range | T_J | | -65 to +150 | | °C |
| Maximum storage temperature range | T_{Stg} | | -65 to +175 | | |
| Maximum thermal resistance, junction to case | R_{thJC} | DC operation | 2.5 | 2.0 | °C/W |
| Maximum thermal resistance, case to heatsink | R_{thCS} | Mounting surface, smooth, flat and greased | 0.5 | | |
| Allowable mounting torque | | Not lubricated threads | 1.5 +0 - 10 % (13) | | N · m (lbf · in) |
| | | Lubricated threads | 1.2 +0 - 10 % (10) | | |
| Approximate weight | | | 7 | | g |
| | | | 0.25 | | oz. |
| Case style | | JEDEC® | DO-203AA (DO-4) | | |

| ΔR_{thJC} CONDUCTION | | | | | | |
|------------------------------|---------------------------|---------------------------|---------------------------|---------------------------|-----------------------------------|-------|
| CONDUCTION ANGLE | 1N3879(R) TO 1N3883(R) | 1N3889(R) TO 1N3893(R) | 1N3879(R) TO 1N3883(R) | 1N3889(R) TO 1N3893(R) | TEST CONDITIONS | UNITS |
| | SINUSOIDAL CONDUCTION | | RECTANGULAR CONDUCTION | | | |
| 180° | 0.58 | 0.46 | 0.33 | 0.26 | $T_J = 150\text{ }^\circ\text{C}$ | K/W |
| 120° | 0.60 | 0.48 | 0.58 | 0.46 | | |
| 60° | 1.28 | 1.02 | 1.28 | 1.02 | | |
| 30° | 2.20 | 1.76 | 2.20 | 1.76 | | |

Note

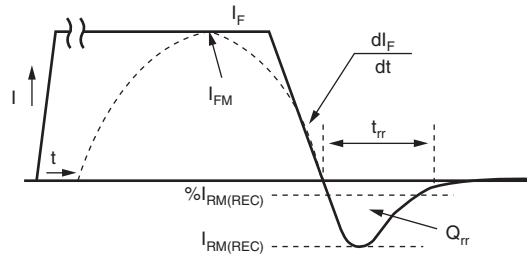
• The table above shows the increment of thermal resistance R_{thJC} when devices operate at different conduction angles than DC



Fig. 1 - Average Forward Current vs. Maximum Allowable Case Temperature, 1N3879 Series



Fig. 2 - Average Forward Current vs. Maximum Allowable Case Temperature, 1N3889 Series



I_F, I_{FM} - Peak forward current prior to commutation
 $-di_F/dt$ - Rate of fall of forward current
 $I_{RM(REC)}$ - Peak reverse recovery current
 t_{rr} - Reverse recovery time
 Q_{rr} - Reverse recovered charge

Fig. 3 - Reverse Recovery Time Test Waveform



| Conduction angle - ϕ | ΔR - K/W |
|---------------------------|------------------|
| 180° | 0.58 |
| 120° | 0.60 |
| 60° | 1.28 |
| 30° | 2.20 |

Fig. 4 - Current Rating Nomogram (Sinusoidal Waveforms), 1N3879 Series



Fig. 5 - Current Rating Nomogram (Rectangular Waveforms), 1N3879 Series



Fig. 6 - Current Rating Nomogram (Sinusoidal Waveforms), 1N3889 Series

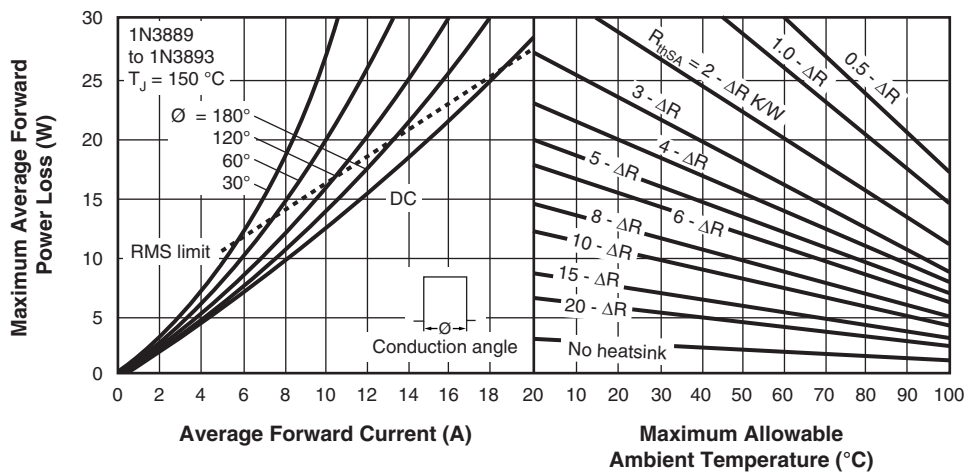


Fig. 7 - Current Rating Nomogram (Rectangular Waveforms), 1N3889 Series

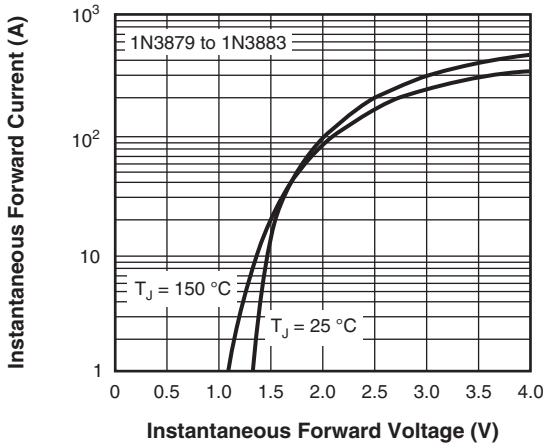


Fig. 8 - Maximum Forward Voltage vs. Forward Current, 1N3879 Series

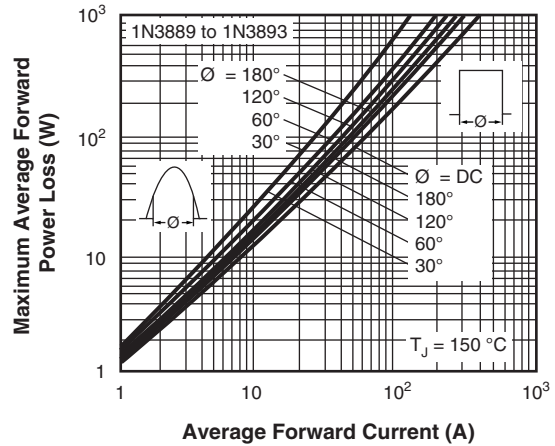


Fig. 11 - Maximum High Level Forward Power Loss vs. Average Forward Current, 1N3889 Series

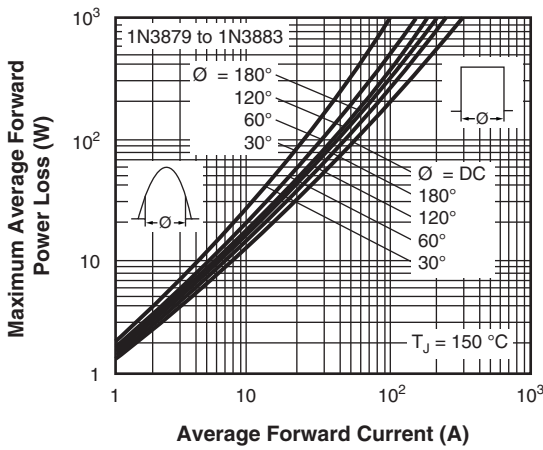


Fig. 9 - Maximum High Level Forward Power Loss vs. Average Forward Current, 1N3879 Series

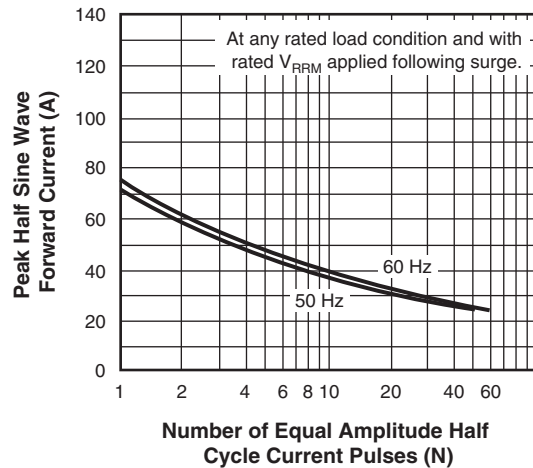


Fig. 12 - Maximum Non-Repetitive Surge Current vs. Number of Current Pulses, 1N3879 Series

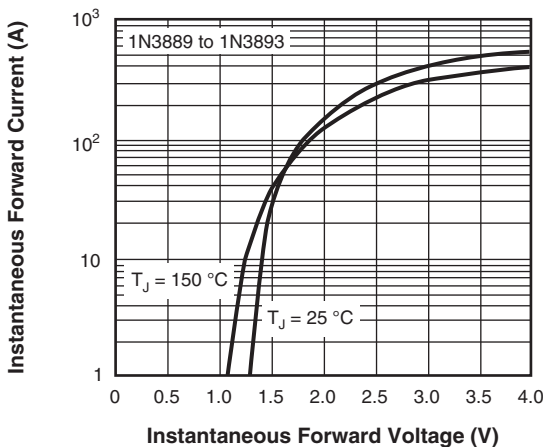


Fig. 10 - Maximum Forward Voltage vs. Forward Current, 1N3889 Series

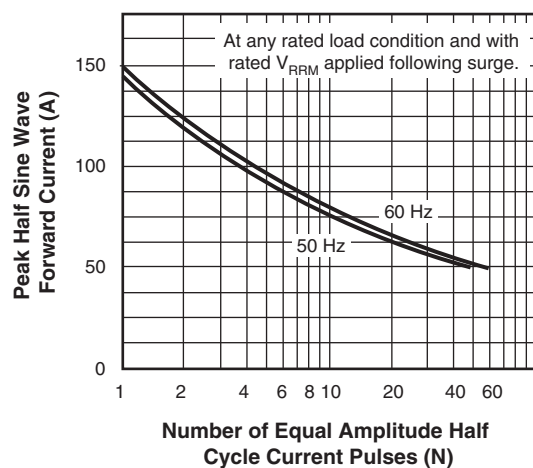


Fig. 13 - Maximum Non-Repetitive Surge Current vs. Number of Current Pulses, 1N3889 Series

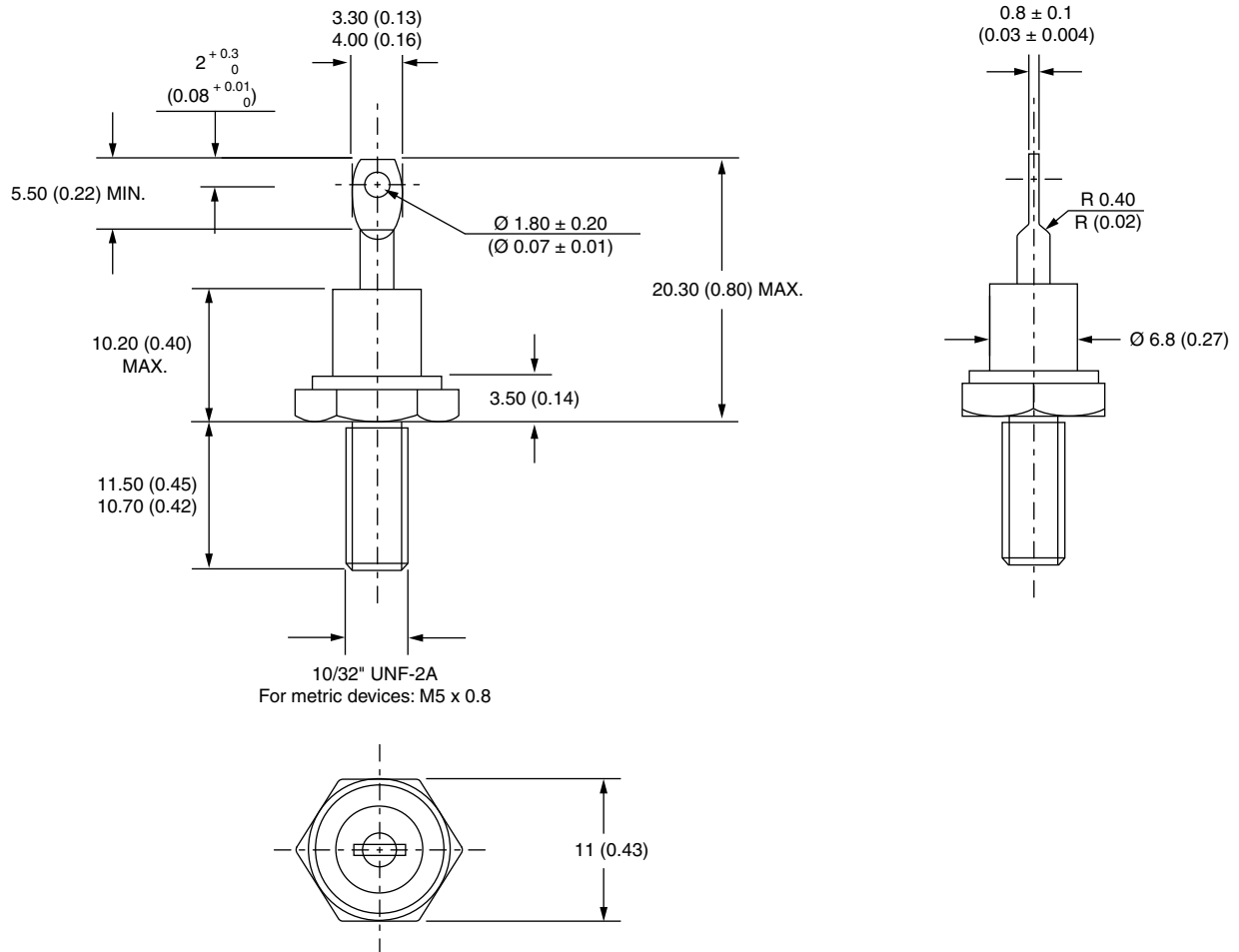


Fig. 14 - Maximum Transient Thermal Impedance, Junction to Case vs. Pulse Duration, All Series

| LINKS TO RELATED DOCUMENTS | |
|----------------------------|--|
| Dimensions | www.vishay.com/doc?95311 |

DO-203AA (DO-4)

DIMENSIONS in millimeters (inches)





Disclaimer

ALL PRODUCT, PRODUCT SPECIFICATIONS AND DATA ARE SUBJECT TO CHANGE WITHOUT NOTICE TO IMPROVE RELIABILITY, FUNCTION OR DESIGN OR OTHERWISE.

Vishay Intertechnology, Inc., its affiliates, agents, and employees, and all persons acting on its or their behalf (collectively, "Vishay"), disclaim any and all liability for any errors, inaccuracies or incompleteness contained in any datasheet or in any other disclosure relating to any product.

Vishay makes no warranty, representation or guarantee regarding the suitability of the products for any particular purpose or the continuing production of any product. To the maximum extent permitted by applicable law, Vishay disclaims (i) any and all liability arising out of the application or use of any product, (ii) any and all liability, including without limitation special, consequential or incidental damages, and (iii) any and all implied warranties, including warranties of fitness for particular purpose, non-infringement and merchantability.

Statements regarding the suitability of products for certain types of applications are based on Vishay's knowledge of typical requirements that are often placed on Vishay products in generic applications. Such statements are not binding statements about the suitability of products for a particular application. It is the customer's responsibility to validate that a particular product with the properties described in the product specification is suitable for use in a particular application. Parameters provided in datasheets and/or specifications may vary in different applications and performance may vary over time. All operating parameters, including typical parameters, must be validated for each customer application by the customer's technical experts. Product specifications do not expand or otherwise modify Vishay's terms and conditions of purchase, including but not limited to the warranty expressed therein.

Except as expressly indicated in writing, Vishay products are not designed for use in medical, life-saving, or life-sustaining applications or for any other application in which the failure of the Vishay product could result in personal injury or death. Customers using or selling Vishay products not expressly indicated for use in such applications do so at their own risk. Please contact authorized Vishay personnel to obtain written terms and conditions regarding products designed for such applications.

No license, express or implied, by estoppel or otherwise, to any intellectual property rights is granted by this document or by any conduct of Vishay. Product names and markings noted herein may be trademarks of their respective owners.

Material Category Policy

Vishay Intertechnology, Inc. hereby certifies that all its products that are identified as RoHS-Compliant fulfill the definitions and restrictions defined under Directive 2011/65/EU of The European Parliament and of the Council of June 8, 2011 on the restriction of the use of certain hazardous substances in electrical and electronic equipment (EEE) - recast, unless otherwise specified as non-compliant.

Please note that some Vishay documentation may still make reference to RoHS Directive 2002/95/EC. We confirm that all the products identified as being compliant to Directive 2002/95/EC conform to Directive 2011/65/EU.

Vishay Intertechnology, Inc. hereby certifies that all its products that are identified as Halogen-Free follow Halogen-Free requirements as per JEDEC JS709A standards. Please note that some Vishay documentation may still make reference to the IEC 61249-2-21 definition. We confirm that all the products identified as being compliant to IEC 61249-2-21 conform to JEDEC JS709A standards.



Стандарт Электрон Связь

Мы молодая и активно развивающаяся компания в области поставок электронных компонентов. Мы поставляем электронные компоненты отечественного и импортного производства напрямую от производителей и с крупнейших складов мира.

Благодаря сотрудничеству с мировыми поставщиками мы осуществляем комплексные и плановые поставки широчайшего спектра электронных компонентов.

Собственная эффективная логистика и склад в обеспечивает надежную поставку продукции в точно указанные сроки по всей России.

Мы осуществляем техническую поддержку нашим клиентам и предпродажную проверку качества продукции. На все поставляемые продукты мы предоставляем гарантию .

Осуществляем поставки продукции под контролем ВП МО РФ на предприятия военно-промышленного комплекса России , а также работаем в рамках 275 ФЗ с открытием отдельных счетов в уполномоченном банке. Система менеджмента качества компании соответствует требованиям ГОСТ ISO 9001.

Минимальные сроки поставки, гибкие цены, неограниченный ассортимент и индивидуальный подход к клиентам являются основой для выстраивания долгосрочного и эффективного сотрудничества с предприятиями радиоэлектронной промышленности, предприятиями ВПК и научно-исследовательскими институтами России.

С нами вы становитесь еще успешнее!

Наши контакты:

Телефон: +7 812 627 14 35

Электронная почта: sales@st-electron.ru

Адрес: 198099, Санкт-Петербург,
Промышленная ул, дом № 19, литера Н,
помещение 100-Н Офис 331