

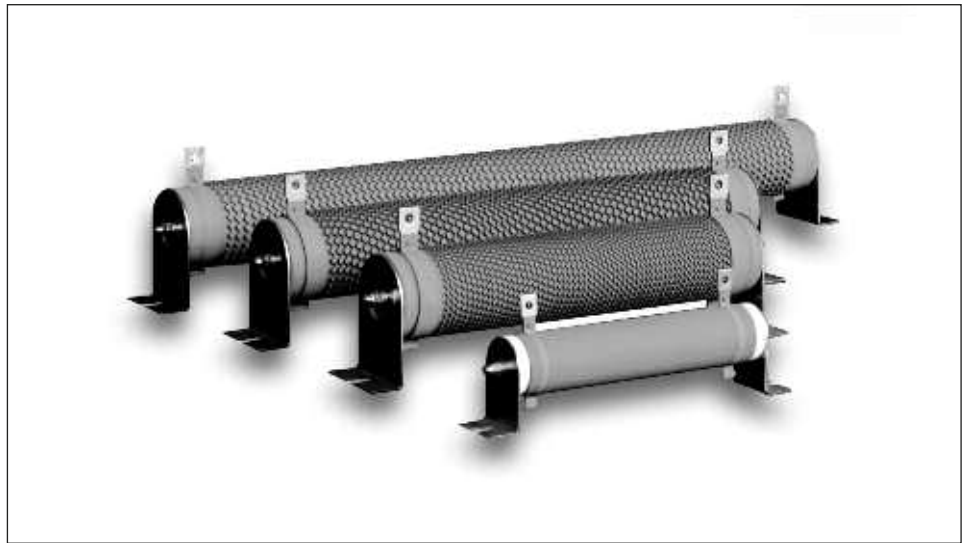
Type TE Series

Key Features

- Mullite Coated
- Up to 2500W Power Rating
- Corrugated Ribbon Element for Rapid Cooling
- 3x Overload for 5 Seconds
- Custom Terminations / Leads Available
- Flameproof Construction

Applications

- Large Electrical and Production Machinery
- Load Test Simulation
- Motor Start/Stop Cycles
- Dynamic Braking
- Equipment Discharge



TE Connectivity is a leading supplier of standard and custom-designed power resistors for industrial, control and general- purpose applications.

The TE range of Mullite coated tubular ceramic core resistors have a corrugated ribbon element for rapid cooling effect to enable up to 2500W power handling capability. Designed for heavy duty machinery, electrical equipment, motor control etc. requiring stability and reliability.

Test Method - Electrical

| Test Item | Specification | Test Details |
|------------------------|------------------------------------|--|
| Life (Moisture Load): | 40°C 95% RH 1000 hour on-off cycle | $\Delta R \pm 3.0\%$ |
| Short Term Overload: | 3 x rated wattage, 5 seconds | - |
| Flammability: | 16x rated power, 5 minutes | No Flames |
| Insulation Resistance: | DC 500V | Over 100M Ω |
| Voltage Resistibility: | AC 2500V 1 minute | Free of damage or flying arc |
| Resistor Strength: | 200N, 30 seconds | Free of visible damage |
| Terminal Strength: | Ual: 45N, 30 seconds | Free of visible damage $R \leq \pm (1\%R + 0.05\Omega)$ |

Type TE Series

Specifications- Electrical

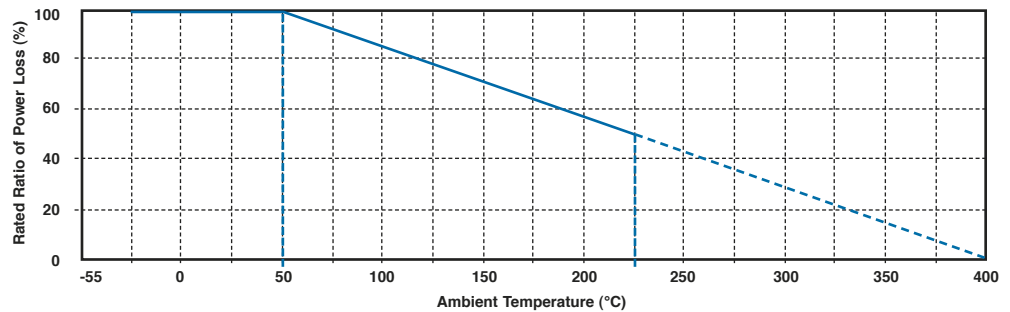
| | |
|-------------------------|---|
| Resistance Range (Ohms) | See Resistance Range Chart below |
| Selection Series | E12 |
| Tolerance | +/-5%, +/-10% as per Resistance Range Chart below |

| Type | Resistance Value | Tolerance |
|-------|------------------|-----------|
| 50W | R10 – R99 | 10% |
| | 1R0 – 2K7 | 5% |
| 60W | R10 – R99 | 10% |
| | 1R0 – 2K7 | 5% |
| 80W | R10 – R99 | 10% |
| | 1R0 – 2K7 | 5% |
| 100W | 1R0 – 2K7 | 5% |
| 120W | 1R0 – 2K7 | 5% |
| 150W | 1R0 – 2K7 | 5% |
| 200W | 1R0 – 2K7 | 5% |
| 300W | 1R0 – 2K7 | 5% |
| 400W | 1R0 – 2K7 | 5% |
| 500W | 1R0 – 2K7 | 5% |
| 600W | 1R0 – 2K7 | 5% |
| 750W | 1R0 – 2K7 | 5% |
| 1000W | 1R0 – 2K7 | 5% |
| 1200W | 1R0 – 2K7 | 5% |
| 1500W | 1R0 – 2K7 | 5% |
| 2000W | 1R0 – 2K7 | 5% |
| 2500W | 1R0 – 2K7 | 5% |

Characteristics - Environmental

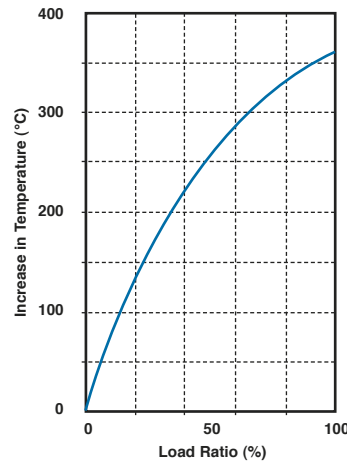
| | |
|--|---------------------------------------|
| Temperature Coefficient of Resistance: | Within ± 440 ppm/ $^{\circ}$ C |
| Rated Power Free Air: | 50 to 2500 Watts |
| Operating Temperature Range | -25 $^{\circ}$ C to +225 $^{\circ}$ C |

Derating Curve

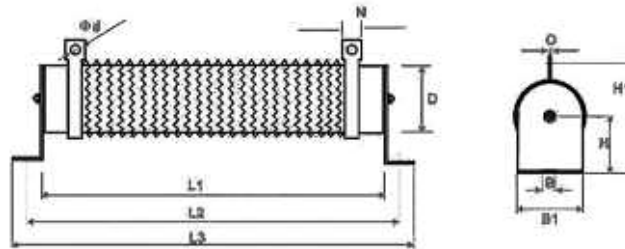


Type TE Series

Temperature Rise



Dimensions



| Rated Power (W) | Dimensions | | | | | | | | | | |
|-----------------|------------|---------|---------|--------|-----|----|----|---------|----|-----|-----|
| | L1 (±2) | L2 (±5) | L3 (±3) | D (±2) | B | B1 | H | H1 (±3) | N | d | O |
| 50 | 102 | 124 | 146 | 28 | 6.5 | 28 | 28 | 61 | 10 | 4.5 | 1.2 |
| 60 | 102 | 124 | 146 | 28 | 6.5 | 28 | 28 | 61 | 10 | 4.5 | 1.2 |
| 80 | 152 | 174 | 196 | 28 | 6.5 | 28 | 28 | 61 | 10 | 4.5 | 1.2 |
| 100 | 182 | 204 | 226 | 28 | 6.5 | 28 | 28 | 61 | 10 | 4.5 | 1.2 |
| 120 | 182 | 204 | 226 | 28 | 6.5 | 28 | 28 | 61 | 10 | 4.5 | 1.2 |
| 150 | 195 | 217 | 239 | 40 | 8 | 40 | 41 | 81 | 12 | 5.5 | 2.0 |
| 200 | 195 | 217 | 239 | 40 | 8 | 40 | 41 | 81 | 12 | 5.5 | 2.0 |
| 300 | 282 | 304 | 326 | 40 | 8 | 40 | 41 | 81 | 12 | 5.5 | 2.0 |
| 400 | 282 | 304 | 326 | 40 | 8 | 40 | 41 | 81 | 12 | 5.5 | 2.0 |
| 500 | 316 | 338 | 360 | 50 | 8 | 50 | 45 | 101 | 16 | 6 | 2.0 |
| 600 | 345 | 367 | 389 | 40 | 8 | 40 | 41 | 81 | 12 | 5.5 | 2.0 |
| 750 | 316 | 338 | 360 | 50 | 8 | 50 | 45 | 101 | 16 | 6 | 2.0 |
| 1000 | 300 | 325 | 350 | 60 | 8.5 | 60 | 60 | 119 | 16 | 6 | 2.0 |
| 1200 | 415 | 440 | 465 | 60 | 8.5 | 60 | 60 | 119 | 16 | 6 | 2.0 |
| 1500 | 415 | 440 | 465 | 60 | 8.5 | 60 | 60 | 119 | 16 | 6 | 2.0 |
| 2000 | 510 | 535 | 560 | 60 | 8.5 | 60 | 60 | 119 | 16 | 6 | 2.0 |
| 2500 | 600 | 625 | 650 | 60 | 8.5 | 60 | 60 | 119 | 16 | 6 | 2.0 |

How to Order

| TE | 50 | B | 1K0 | J |
|-------------------------------------|---|--|--|---------------------|
| Common Part | Power Rating | Mounting | Resistance Value | Tolerance |
| TE - High Power Wire Wound Resistor | 50 - 50 Watt 60 - 60 Watt 80 - 80 Watt 100 - 100 Watt etc. | A - Without Bracket B - With Bracket (Standard) | 1 ohm (1000 milliohms) 1R0 10 ohm (10 ohms) 10R 100R ohms (100 ohms) 100R 1k ohms (1000 ohms) 1K0 | J - ±5% K - ±10% |

TE Connectivity, TE connectivity (logo) and TE (logo) are trademarks. Other logos, product and Company names mentioned herein may be trademarks of their respective owners.

While TE has made every reasonable effort to ensure the accuracy of the information in this datasheet, TE does not guarantee that it is error-free, nor does TE make any other representation, warranty or guarantee that the information is accurate, correct, reliable or current. TE reserves the right to make any adjustments to the information contained herein at any time without notice. TE expressly disclaims all implied warranties regarding the information contained herein, including, but not limited to, any implied warranties of merchantability or fitness for a particular purpose. The dimensions in this datasheet are for reference purposes only and are subject to change without notice. Specifications are subject to change without notice. Consult TE for the latest dimensions and design specifications.



Стандарт Электрон Связь

Мы молодая и активно развивающаяся компания в области поставок электронных компонентов. Мы поставляем электронные компоненты отечественного и импортного производства напрямую от производителей и с крупнейших складов мира.

Благодаря сотрудничеству с мировыми поставщиками мы осуществляем комплексные и плановые поставки широчайшего спектра электронных компонентов.

Собственная эффективная логистика и склад в обеспечивает надежную поставку продукции в точно указанные сроки по всей России.

Мы осуществляем техническую поддержку нашим клиентам и предпродажную проверку качества продукции. На все поставляемые продукты мы предоставляем гарантию .

Осуществляем поставки продукции под контролем ВП МО РФ на предприятия военно-промышленного комплекса России , а также работаем в рамках 275 ФЗ с открытием отдельных счетов в уполномоченном банке. Система менеджмента качества компании соответствует требованиям ГОСТ ISO 9001.

Минимальные сроки поставки, гибкие цены, неограниченный ассортимент и индивидуальный подход к клиентам являются основой для выстраивания долгосрочного и эффективного сотрудничества с предприятиями радиоэлектронной промышленности, предприятиями ВПК и научно-исследовательскими институтами России.

С нами вы становитесь еще успешнее!

Наши контакты:

Телефон: +7 812 627 14 35

Электронная почта: sales@st-electron.ru

Адрес: 198099, Санкт-Петербург,
Промышленная ул, дом № 19, литера Н,
помещение 100-Н Офис 331