

# LTM2881: Isolated 20Mbps RS485/RS422 $\mu$ Module Transceiver with Power

## DESCRIPTION

Demonstration circuit DC1503A is an Isolated RS485/RS422  $\mu$ Module<sup>®</sup> transceiver + power featuring the LTM<sup>®</sup>2881. The demo circuit is a 2500V<sub>RMS</sub> galvanically isolated RS485/RS422 transceiver interface. All components are integrated into the  $\mu$ Module transceiver. The demo circuit operates from a supply on  $V_{CC}$  and a logic

supply on  $V_L$ . The part generates the output voltage  $V_{CC2}$  and communicates all necessary signaling across the isolation barrier using isolation  $\mu$ Module technology.

**Design files for this circuit board are available at <http://www.linear.com/demo>.**

LT, LT, LTC, LTM, Linear Technology and the Linear logo are registered trademarks of Linear Technology Corporation. All other trademarks are the property of their respective owners.

**Table 1. Performance Summary ( $T_A = 25^\circ\text{C}$ )**

SYMBOL	PARAMETER	CONDITIONS	MIN	TYP	MAX	UNITS
$V_{CC}$	Input Supply Range	LTM2881-5	4.5	5	5.5	V
		LTM2881-3	3.0	3	3.6	V
$V_L$	Logic Signal Supply Range		1.62		5.5	V
$V_{CC2}$	Output Voltage	$I_{LOAD} = 0\text{mA to }100\text{mA}$ , $DE = 0\text{V}$	4.7	5		V
$f_{MAX}$	Maximum Data rate	$\overline{SLO} = V_{CC2}$	20			Mbps
$V_{IORM}$	Maximum Working Insulation Voltage	GND to GND2	560			V
	Common Mode Transient Immunity	GND to GND2	30			kV/ $\mu$ s

## OPERATING PRINCIPLES

The LTM2881 contains an isolated DC/DC converter, delivering power to  $V_{CC2}$  at 5V from the input supply  $V_{CC}$ . Isolation is maintained by the separation of GND and GND2 where significant operating voltages and transients can exist without affecting the operation of the LTM2881. The logic side ON pin enables or shuts down the LTM2881. RS485/RS422 signaling is controlled by the logic inputs DE, DI, TE and RE. Connection to the transceiver pins (A, B, Y and Z) allows full- or half-duplex operation on the isolated side of the demo circuit. A full-/half-duplex switch is included on the demo circuit to ease setting the system

configuration. A driver termination resistor is included on the demo circuit to allow master termination in full-duplex configurations. Additional logic signaling from the isolated side to the logic side is available with the  $D_{IN}$  to  $D_{OUT}$  pins. The  $\overline{SLO}$  pin configures the slew rate of the driver output pins Y and Z.

Data is transmitted out the driver pins Y and Z from the input DI with the input DE set high. Data is received through the difference in A and B to the output RO with the input  $\overline{RE}$  set low.



**QUICK START PROCEDURE**

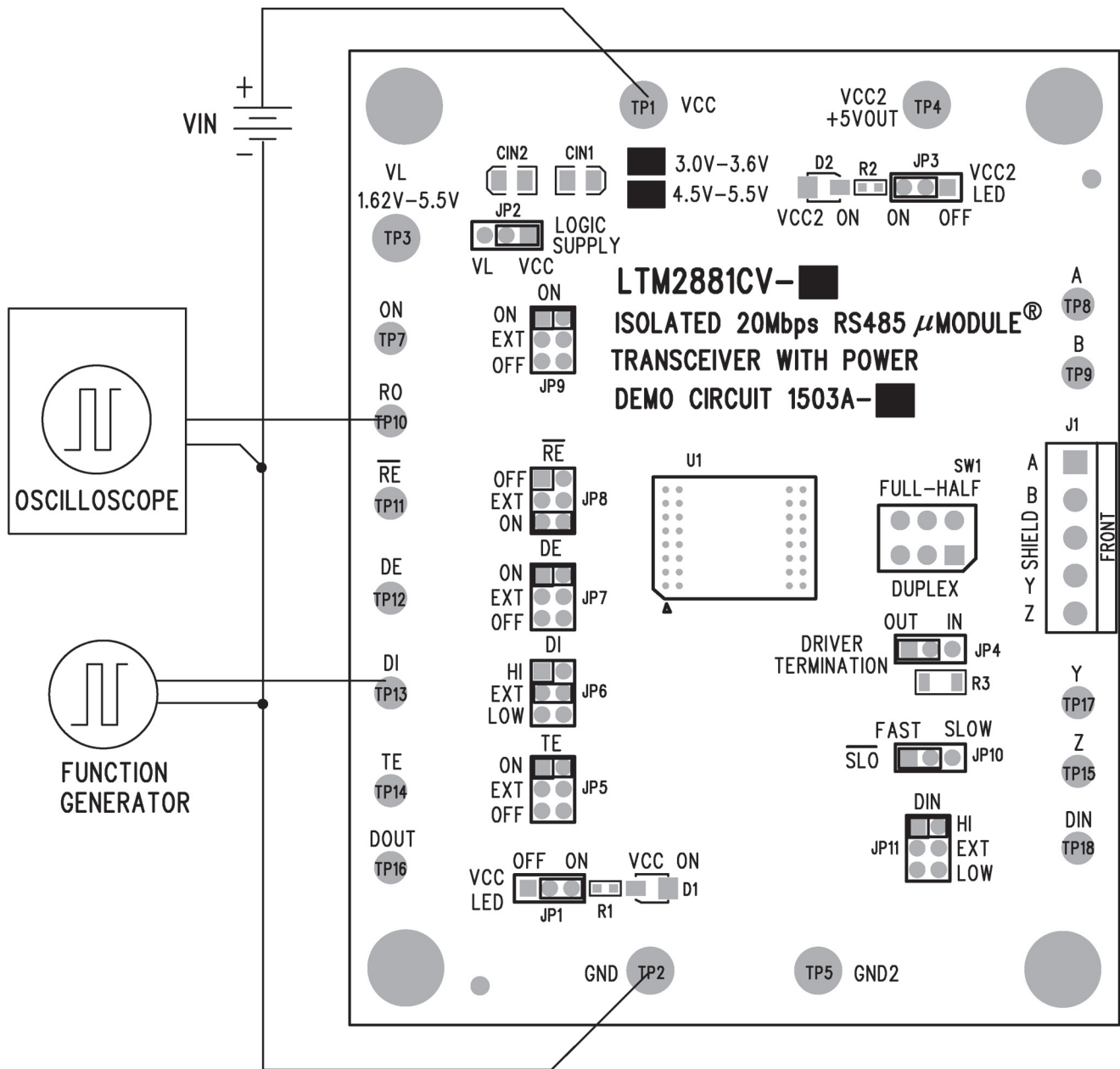


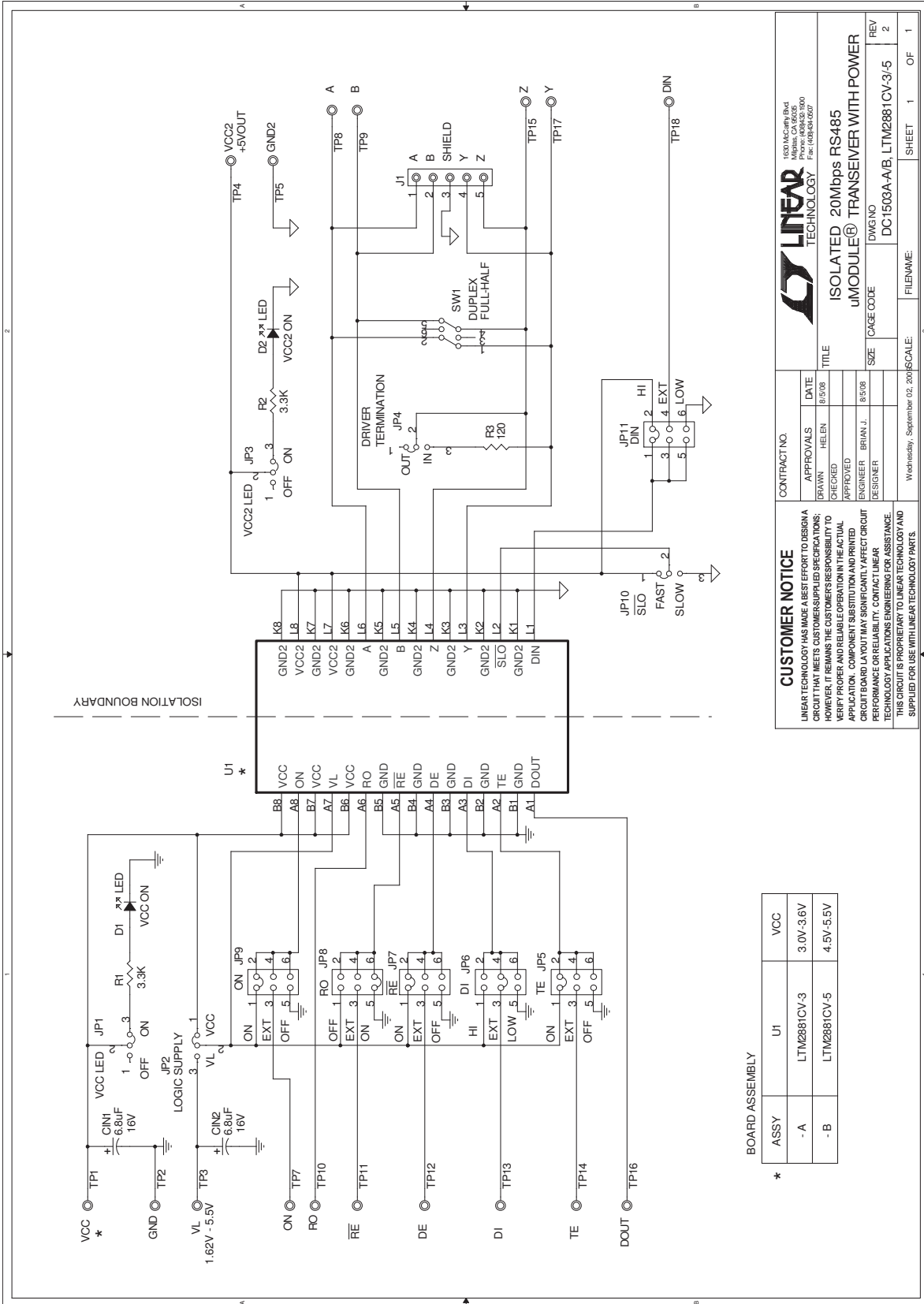
Figure 2. Proper Measurement Equipment Setup

# DEMO MANUAL DC1503A

## PARTS LIST

ITEM	QTY	REFERENCE	PART DESCRIPTION	MANUFACTURER/PART NUMBER
<b>REQUIRED CIRCUIT COMPONENTS</b>				
1	1	U1	I.C., LTM2881CV-3 I.C., LTM2881CV-5	LINEAR LTM2881CV-3#PBF LINEAR LTM2881CV-5#PBF
<b>HARDWARE (FOR DEMO BOARD ONLY)</b>				
2	2	CIN1, CIN2	CAP, TANT 6.8 $\mu$ F 16V 10% TAJA	AVX TAJA685K016R
3	2	D1, D2	LED, SMT, GREEN, 2.1V 15mA	PANASONIC LN1351C-(TR)
4	1	R1	RES., CHIP 1k 1/16W, 5%, 0603	VISHAY, CRCW06031K00JNEA
5	1	R2	RES., CHIP 3.3k 1/16W, 5%, 0603	VISHAY, CRCW06033K30JNEA
6	1	R3	RES., CHIP 120 $\Omega$ 1/4W, 5%, 1206	VISHAY, CRCW1206120RJNEA
7	1	SW1	SWITCH, SLIDE, DPDT	E-SWITCH, EG2271
8	1	J1	TERMINAL BLOCK, 5-PIN 3.5mm	ON-SHORE TECH ED555/5DS
9	5	JP1-JP4, JP10	2mm SINGLE ROW HEADER, 3 PIN	SAMTEC, TMM-103-02-L-S
10	6	JP5-JP9, JP11	2mm DOUBLE ROW HEADER, 6 PIN	SAMTEC, TMM-103-02-L-D
11	11	JP1-JP11	SHUNT	SAMTEC, 2SN-BK-G
12	5	TP1-TP5	TEST POINT, TURRET, 0.095	MILL-MAX, 2501-2-00-80-00-00-07-0
13	12	TP7-TP18	TEST POINT, TURRET, 0.065	MILL-MAX, 2308-2-00-80-00-00-07-0
14	4	(Stand-Off)	STAND-OFF, NYLON 0.375" tall	KEYSTONE, 8832 (SNAP ON)

**SCHEMATIC DIAGRAM**



# DEMO MANUAL DC1503A

---

## DEMONSTRATION BOARD IMPORTANT NOTICE

Linear Technology Corporation (LTC) provides the enclosed product(s) under the following **AS IS** conditions:

This demonstration board (DEMO BOARD) kit being sold or provided by Linear Technology is intended for use for **ENGINEERING DEVELOPMENT OR EVALUATION PURPOSES ONLY** and is not provided by LTC for commercial use. As such, the DEMO BOARD herein may not be complete in terms of required design-, marketing-, and/or manufacturing-related protective considerations, including but not limited to product safety measures typically found in finished commercial goods. As a prototype, this product does not fall within the scope of the European Union directive on electromagnetic compatibility and therefore may or may not meet the technical requirements of the directive, or other regulations.

If this evaluation kit does not meet the specifications recited in the DEMO BOARD manual the kit may be returned within 30 days from the date of delivery for a full refund. **THE FOREGOING WARRANTY IS THE EXCLUSIVE WARRANTY MADE BY THE SELLER TO BUYER AND IS IN LIEU OF ALL OTHER WARRANTIES, EXPRESSED, IMPLIED, OR STATUTORY, INCLUDING ANY WARRANTY OF MERCHANTABILITY OR FITNESS FOR ANY PARTICULAR PURPOSE. EXCEPT TO THE EXTENT OF THIS INDEMNITY, NEITHER PARTY SHALL BE LIABLE TO THE OTHER FOR ANY INDIRECT, SPECIAL, INCIDENTAL, OR CONSEQUENTIAL DAMAGES.**

The user assumes all responsibility and liability for proper and safe handling of the goods. Further, the user releases LTC from all claims arising from the handling or use of the goods. Due to the open construction of the product, it is the user's responsibility to take any and all appropriate precautions with regard to electrostatic discharge. Also be aware that the products herein may not be regulatory compliant or agency certified (FCC, UL, CE, etc.).

No License is granted under any patent right or other intellectual property whatsoever. **LTC assumes no liability for applications assistance, customer product design, software performance, or infringement of patents or any other intellectual property rights of any kind.**

LTC currently services a variety of customers for products around the world, and therefore this transaction **is not exclusive**.

**Please read the DEMO BOARD manual prior to handling the product.** Persons handling this product must have electronics training and observe good laboratory practice standards. **Common sense is encouraged.**

This notice contains important safety information about temperatures and voltages. For further safety concerns, please contact a LTC application engineer.

Mailing Address:

Linear Technology  
1630 McCarthy Blvd.  
Milpitas, CA 95035

Copyright © 2004, Linear Technology Corporation



**Стандарт  
Электрон  
Связь**

Мы молодая и активно развивающаяся компания в области поставок электронных компонентов. Мы поставляем электронные компоненты отечественного и импортного производства напрямую от производителей и с крупнейших складов мира.

Благодаря сотрудничеству с мировыми поставщиками мы осуществляем комплексные и плановые поставки широчайшего спектра электронных компонентов.

Собственная эффективная логистика и склад в обеспечивает надежную поставку продукции в точно указанные сроки по всей России.

Мы осуществляем техническую поддержку нашим клиентам и предпродажную проверку качества продукции. На все поставляемые продукты мы предоставляем гарантию .

Осуществляем поставки продукции под контролем ВП МО РФ на предприятия военно-промышленного комплекса России , а также работаем в рамках 275 ФЗ с открытием отдельных счетов в уполномоченном банке. Система менеджмента качества компании соответствует требованиям ГОСТ ISO 9001.

Минимальные сроки поставки, гибкие цены, неограниченный ассортимент и индивидуальный подход к клиентам являются основой для выстраивания долгосрочного и эффективного сотрудничества с предприятиями радиоэлектронной промышленности, предприятиями ВПК и научно-исследовательскими институтами России.

С нами вы становитесь еще успешнее!

**Наши контакты:**

**Телефон:** +7 812 627 14 35

**Электронная почта:** [sales@st-electron.ru](mailto:sales@st-electron.ru)

**Адрес:** 198099, Санкт-Петербург,  
Промышленная ул, дом № 19, литера Н,  
помещение 100-Н Офис 331