

TYPICAL INDICATOR ORDERING EXAMPLE

KB **02** **K** **W01** — **12** — **FF**

Shapes

| Bushings Mounting | |
|-------------------|-------------|
| 01 | Square |
| 02 | Round |
| 03 | Rectangular |
| Snap-in Mounting | |
| 04 | Square |
| 05 | Round |
| 06 | Rectangular |

Housing

| | |
|---|------------|
| K | Black only |
|---|------------|

Terminals

| | |
|-----|--------------------|
| W01 | Silver Solder Lug* |
|-----|--------------------|

* Wire harness & cable assemblies offered only in Americas

Lamps

Incandescent Lamp Used with Solid Cap

| | |
|----|---------|
| 05 | 5-volt |
| 12 | 12-volt |

Incandescent or Neon Lamp Used with Insert Cap

| | |
|----|---------------|
| 05 | 5-volt |
| 12 | 12-volt |
| 01 | 110-volt Neon |

Bright LED Used with Cap for LED

| Colors | Resistor | |
|----------|----------|-------------|
| 5C Red | No Code | No Resistor |
| 5D Amber | 05 | 5-volt |
| | 12 | 12-volt |
| 5F Green | 24 | 24-volt |

Super Bright LED Used with Cap for LED

| | |
|----|-------|
| 6B | White |
| 6F | Green |
| 6G | Blue |

Cap Types & Colors

Solid Cap: Lens/Filter Colors

| | | | |
|----|--------------|----|-------------|
| BB | White/White | FB | Green/White |
| CB | Red/White | FF | Green/Green |
| CC | Red/Red | GB | Blue/White |
| EB | Yellow/White | GG | Blue/Blue |

Insert Cap: Lens/Filter Colors

| | |
|-----|--------------|
| JB | Clear/White |
| JC | Clear/Red |
| JE | Clear/Yellow |
| *JF | Clear/Green |
| *JG | Clear/Blue |

* JF & JG not suitable with neon.

LED Cap: Lens/Diffuser Colors

| | |
|----|--|
| AB | Square Spot Illuminated Black Cap/White Window |
| JB | Clear/White |
| JC | Clear/Red |
| JD | Clear/Amber |
| JF | Clear/Green |

LED Cap: Lens/Diffuser Colors

| | |
|----|-------------|
| JB | Clear/White |
|----|-------------|

DESCRIPTION FOR TYPICAL ORDERING EXAMPLE

KB02KW01-12-FF



12-volt Incandescent Lamp Solid Cap with Green Lens and Green Filter

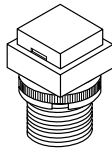
Black Housing Round with Bushing Mounting

Silver Solder Lug Terminals

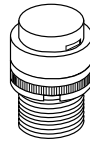
SHAPES & MOUNTING TYPES

Bushing Mounting

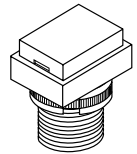
01 .551" (14mm)
Square



02 .551" (14mm)
Round

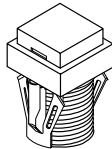


03 .551" x .728" (14mm x 18.5mm)
Rectangular

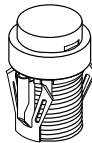


Snap-in Mounting

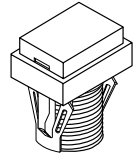
04 .551" (14mm)
Square



05 .551" (14mm)
Round



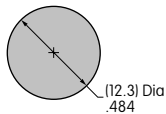
06 .551" x .728" (14mm x 18.5mm)
Rectangular



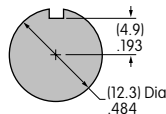
The bezel is an integral part of the indicator body.

Bushing Mounting

Without
Keyway



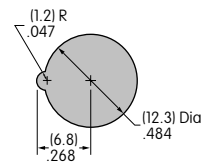
Panel Thickness:
.020" ~ .315"
(0.5 ~ 8mm)



With
Keyway

Snap-in Mounting

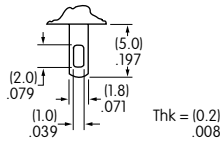
Panel Thickness:
.039" ~ .138"
(1.0 ~ 3.5mm)



TERMINALS

W01

Silver Solder Lug



LAMP COLORS & SPECIFICATIONS

The electrical specifications shown are determined at a basic temperature of 25°C.
If the source voltage exceeds the rated voltage, a ballast resistor is required.
The ballast resistor calculation and more lamp detail are shown in the Supplement section.

Incandescent & Neon Lamps

| AT611 Incandescent | AT615 Neon | | 05 | 12 | 01 | Recommended Resistors for Neon: 33K ohms for 110V AC; 100K ohms for 220V AC |
|-----------------------|---------------|---------------|-----------|-----------|-----------|--|
| | | | Voltage | V | 5V AC | |
| Current | I | 115mA | 60mA | 1.5mA | | |
| Endurance | Hours | 7,000 average | | 10,000 | | |

Bright LED without Resistor

| AT635 | Red | Amber | Green | No Code | No Resistor | | |
|-----------------------------------|-----------------------------------|--------------|-----------|----------------|--------------|-----------|-----------|
| | | | | Color Codes | Red | Amber | Green |
| LEDs are colored in OFF state. | 5C | 5D | 5F | | | | |
| | Forward Peak Current | I_{FM} | | | 30mA | 30mA | 30mA |
| | Continuous Forward Current | I_F | | | 20mA | 20mA | 20mA |
| | Forward Voltage | V_F | | | 1.9V | 2.0V | 2.1V |
| | Reverse Peak Voltage | V_{RM} | | | 5V | 5V | 5V |
| | Current Reduction Rate Above 25°C | ΔI_F | | | 0.42mA/°C | 0.29mA/°C | 0.42mA/°C |
| | Ambient Temperature Range | | | | -25° ~ +50°C | | |




T-1 1/2 Bi-pin

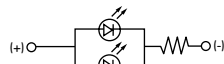
LAMP COLORS & SPECIFICATIONS

The electrical specifications shown are determined at a basic temperature of 25°C.
 If the source voltage exceeds the rated voltage, a ballast resistor is required.
 The ballast resistor calculation and more lamp detail are shown in the Supplement section.

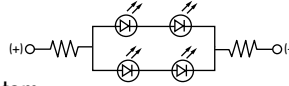
Bright LED with Resistor

| | | | | | | | | |
|---|-----------------------------------|------------------|--------------------|--------------------|----------------|-----------|-----------|------|
| AT634 LEDs are colored in OFF state.  T-1 1/4 Bi-pin | Color Codes: | Red 5C | Amber 5D | Green 5F | Resistor Codes | | | |
| | | | | | 05 | 12 | 24 | |
| | Forward Peak Current | | | | I_{FM} | — | — | — |
| | Continuous Forward Current | | | | I_F | 25mA | 20mA | 10mA |
| | Forward Voltage | | | | V_F | 5V | 12V | 24V |
| | Reverse Peak Voltage | | | | V_{RM} | 4V | 8V | 16V |
| | Current Reduction Rate Above 25°C | | | | ΔI_F | — | — | — |
| Ambient Temperature Range | | | | | -25° ~ +50°C | | | |

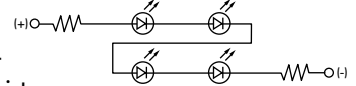
AT634
5-volt
2-element
with 1 Resistor





AT634
12-volt
4-element
with 2 Resistors



AT634
24-volt
4-element
with 2 Resistors



Super Bright Single Element LED

| | | | | | | | |
|---|--|--------------|--|--------------|-----------|-----------|-----------|
| AT625G Blue AT631B White AT632F Green  T-1 Bi-pin |  | | | 6B | 6F | 6G | |
| | Color | | | White | Green | Blue | |
| | Forward Peak Current | I_{FM} | | | 30mA | 30mA | 30mA |
| | Continuous Forward Current | I_F | | | 20mA | 20mA | 20mA |
| | Forward Voltage | V_F | | | 3.6V | 3.5V | 3.6V |
| | Reverse Peak Voltage | V_{RM} | | | 5V | 5V | 5V |
| | Current Reduction Rate Above 25°C | ΔI_F | | | 0.50mA/°C | 0.50mA/°C | 0.50mA/°C |
| Ambient Temperature Range | | | | -25° ~ +50°C | | | |

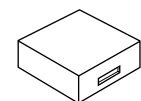
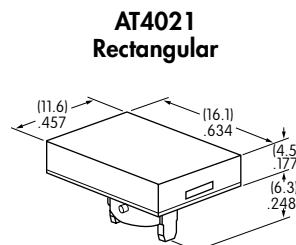
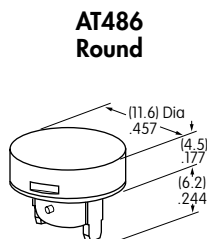
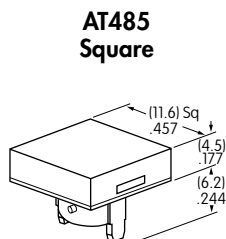
CAP TYPES & COLOR COMBINATIONS

Color Codes: **B** White **C** Red **E** Yellow **F** Green **G** Blue **J** Clear

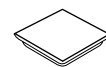
Solid Cap for Incandescent Lamp

Lens/Filter Colors Available:

- BB**
- FB**
- CB**
- FF**
- CC**
- GB**
- EB**
- GG**



Translucent Colored Lens



Translucent Colored Filter



Lamp AT611

Material: Polycarbonate Finish: Glossy

Toggles
Rocker
Pushbuttons
Illuminated PB
Programmable
Keylocks
Rotaries
Slides
Tactiles
Tilt
Touch
Accessories
Supplement

CAP TYPES & COLOR COMBINATIONS

Color Codes: A Black B White C Red D Amber E Yellow F Green G Blue J Clear

Insert Cap for Incandescent or Neon Lamp

Lens/Filter Colors Available:

JB

AT487
Square

AT488
Round

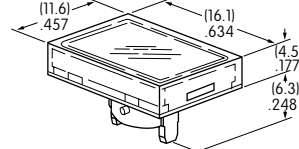
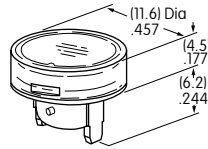
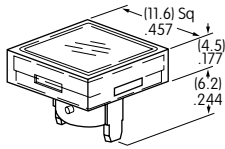
AT4022
Rectangular



Transparent Clear Lens

JC

JE



Translucent Colored Filter

JF

JG



JF and JG not suitable with neon lamp.

Material: Polycarbonate Finish: Glossy

Lamp AT611 Lamp AT615

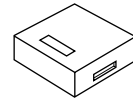
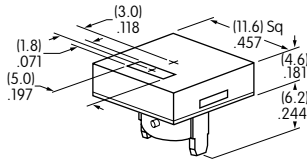
Spot Illuminated Cap for Bright LED without Resistor or with Resistor

Cap/Window Colors Available:

AB

Opaque Black Cap with Translucent White Window for Spot Illumination

AT4051
Square



Bright LED AT635

Bright LED AT634

Material: Polycarbonate Finish: Matte

Cap for Bright LED without Resistor or LED with Resistor

Lens/Diffuser Colors Available: (AT4133, 4132, 4134 white diffusers; AT4158, 4160, 4159 colored diffusers)

JB

AT4133

AT4132

AT4134



Transparent Clear Lens

Square

Round

Rectangular

JC

AT4158

AT4160

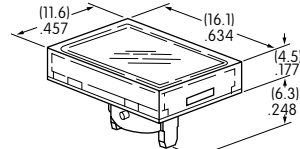
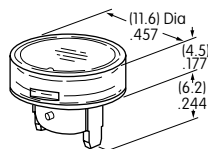
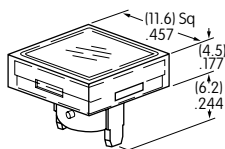
AT4159



Translucent Diffuser

JD

JF



Bright LED AT635

Bright LED AT634

Material: Polycarbonate Finish: Glossy

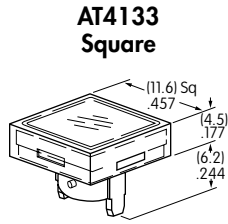
CAP TYPES & COLOR COMBINATIONS

Cap for Super Bright LED

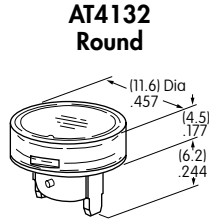
Lens/Diffuser
Colors Available:



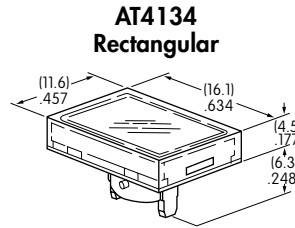
Clear Lens
White Diffuser



AT4133 Square



AT4132 Round



AT4134 Rectangular



Translucent Clear Lens



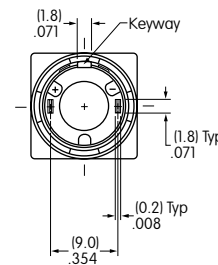
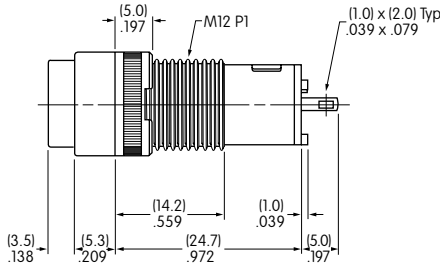
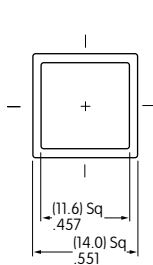
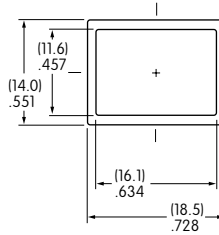
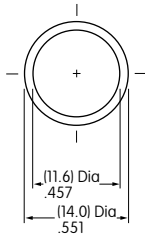
Translucent White Diffuser



Super Bright LEDs
AT625, AT631, AT632

Material: Polycarbonate Finish: Glossy

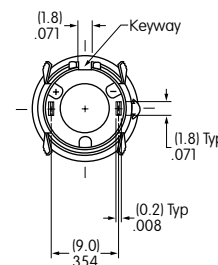
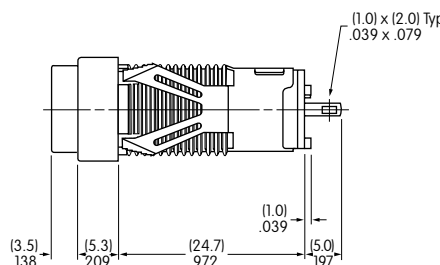
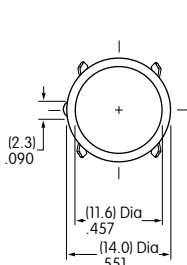
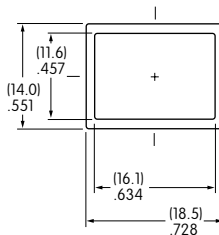
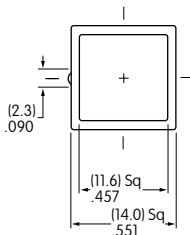
TYPICAL INDICATOR DIMENSIONS



Bushing Mount



KB01KW01-05-GG



Snap-in Mount



KB05KW01-05-FF



Стандарт Электрон Связь

Мы молодая и активно развивающаяся компания в области поставок электронных компонентов. Мы поставляем электронные компоненты отечественного и импортного производства напрямую от производителей и с крупнейших складов мира.

Благодаря сотрудничеству с мировыми поставщиками мы осуществляем комплексные и плановые поставки широчайшего спектра электронных компонентов.

Собственная эффективная логистика и склад в обеспечивает надежную поставку продукции в точно указанные сроки по всей России.

Мы осуществляем техническую поддержку нашим клиентам и предпродажную проверку качества продукции. На все поставляемые продукты мы предоставляем гарантию .

Осуществляем поставки продукции под контролем ВП МО РФ на предприятия военно-промышленного комплекса России , а также работаем в рамках 275 ФЗ с открытием отдельных счетов в уполномоченном банке. Система менеджмента качества компании соответствует требованиям ГОСТ ISO 9001.

Минимальные сроки поставки, гибкие цены, неограниченный ассортимент и индивидуальный подход к клиентам являются основой для выстраивания долгосрочного и эффективного сотрудничества с предприятиями радиоэлектронной промышленности, предприятиями ВПК и научно-исследовательскими институтами России.

С нами вы становитесь еще успешнее!

Наши контакты:

Телефон: +7 812 627 14 35

Электронная почта: sales@st-electron.ru

Адрес: 198099, Санкт-Петербург,
Промышленная ул, дом № 19, литера Н,
помещение 100-Н Офис 331