

iDigi® Gateway Development Kit

Development Kit for ZigBee Gateways and iDigi Platform

All the hardware, software, and documentation necessary to experience ZigBee to Internet connectivity, iDigi web services and Digi development tools.



Overview

The iDigi Gateway Development Kit is designed to make it easy to setup a ZigBee network, upload a custom iDigi® Dia application, and provide seamless connectivity to the iDigi® Device Cloud™ for web services integration to standard business applications over the Internet. The kit contains:

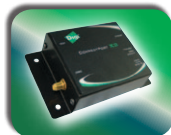
- ConnectPort® X4 ZigBee to Ethernet (or cellular/WiMAX) gateway
- Digi XBee Smart Plug™ (non-US versions substitute XBee® Range Extender)
- Battery-powered XBee temperature/light sensor
- Digi ESP Integrated Development Environment (IDE) for iDigi Dia/Python development
- Related cables, batteries and power supply

iDigi Gateway Development Kit users will explore three key aspects of Digi technology: ZigBee networking and gateway fundamentals, local customization on the gateway using iDigi Dia/Python software, and iDigi web services. The kit also provides an example of how a business application would utilize real-time sensor data via web services and Google Apps.

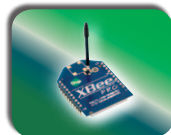
Related Products



ZigBee RF Module Dev Kit



Gateways



XBee Modules



XBee Adapters

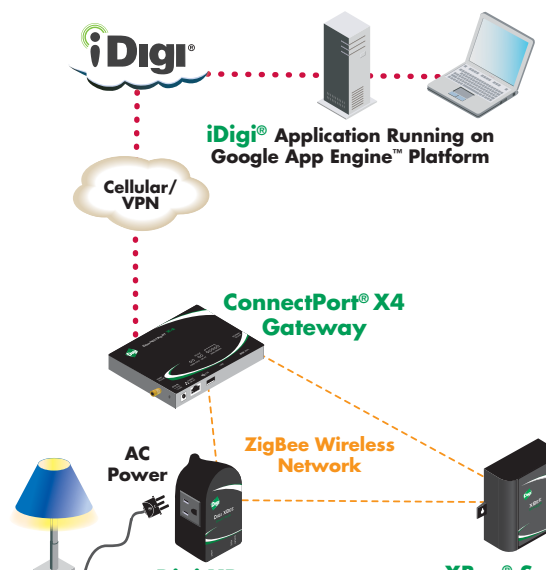


Range Extenders



iDigi Solutions

Application Highlight



Features/Benefits

- Jump-start application development with pre-packaged kit
- Learn how to discover and configure devices in a ZigBee network
- Read temperature and light values from the ZigBee network via the iDigi Device Cloud
- Provide IP (Ethernet or cellular/WiMAX) connectivity to the ZigBee network with a ConnectPort X4 gateway
- Google App Engine™ platform and supporting code provide a simple example of a business application working with iDigi
- Digi ESP™ for Python® simplifies Python development on Digi gateways



Product Type

ConnectPort® X4 Gateway

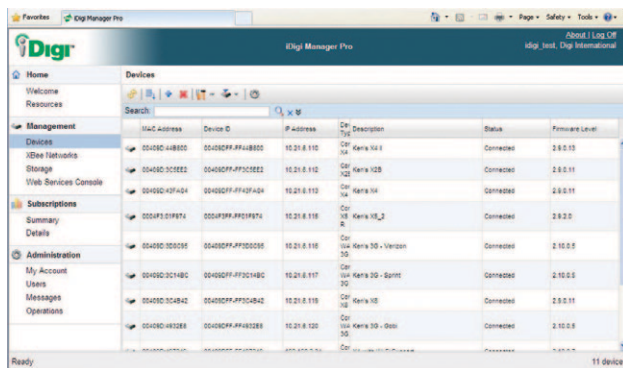
General	
Network Protocols	UDP/TCP, DHCP
Interfaces	Physical Interfaces: (1) RJ-45 Ethernet port, (1) DB-9 RS232 serial port, (1) USB port; RF Interfaces: (1) XBee-PRO® ZB 2.4 GHz, Optional generic GSM HSPA+, HSPA+/EV-DO 800/850/900/1700 (AWS)/1900/2100 MHz Gobi with Rx Diversity, or WiMAX
LEDs	Ethernet status, Power, XBee link/activity
Router/Security Features	NAT, Port forwarding, Access control lists (IP filtering)
Management	HTTP/HTTPS web interface, Password access control, IP service port control, Optional secure enterprise management via iDigi® Device Cloud™
Security	SSL tunnels, SSHv2, FIPS 197 (serial port)
VPN	IPsec with IKE/ISAKMP, multiple tunnel support, DES, 3DES and up to 256-bit AES encryption, VPN pass-through, GRE forwarding

Product Type	Digi XBee Smart Plug™ ZB (US Kits)	XBee® Range Extender (Non-US kits)
---------------------	---	---

General		
Current Sensor	Detects current draw from user AC socket, Range: 0 A to 8 A	N/A
Ambient Light Sensor	Range of spectral bandwidth: 360 to 970 nm (similar to human eye) Wavelength of peak sensitivity: 570 nm	
LEDs	Outlet (Yellow): Solid when user AC socket is powered; Associate (Green): Solid when external power is supplied, blinks when unit is connected and associated to an RF network	Power, XBee link/activity
Load Rating	Resistive: 120 VAC, 8A; Inductive (0.75 pf): 120 VAC, 960 VA Motor: 1/3 HP (7.2 FLA)	N/A

Product Type	XBee® Light/Temperature Sensor
---------------------	---------------------------------------

Performance	
Indoor/Urban Range	133 ft (40 m)
Outdoor RF Line-of-Sight Range	400 ft (120 m)
LEDs	Power, XBee link/activity
Temperature Sensor	Range: -18° C to +55° C; (-0.4° F to +131° F); Accuracy: +/- 2° C
Ambient Light Sensor	Range of spectral bandwidth: 360 to 970 nm (similar to human eye) Wavelength of peak sensitivity: 570 nm
Power Requirements	3 x AA alkaline 1.5 V batteries (batteries included with kit)



Visit www.digi.com for part numbers.

DIGI SERVICE AND SUPPORT - You can purchase with confidence knowing that Digi is here to support you with expert technical support and a strong five-year warranty. www.digi.com/support

**Digi International
Worldwide HQ**

877-912-3444
952-912-3444

**Digi International
France**

+33-1-55-61-98-98
www.digi.fr

**Digi International
Japan**

+81-3-5428-0261
www.digi-intl.co.jp

**Digi International
India**

+91-80-4287-9887

**Digi International
Singapore**

+65-6213-5380

**Digi International
China**

+86-21-5150-6898
www.digi.cn



91001658
A4/612

BUY ONLINE • www.digi.com

© 2010-2012 Digi International Inc.

All rights reserved. Digi, Digi International, the Digi logo, the iDigi logo, the Making Wireless M2M Easy logo, ConnectPort, Digi ESP, Digi XBee Smart Plug, iDigi, iDigi Device Cloud, XBee and XBee-PRO are trademarks or registered trademarks of Digi International Inc. in the United States and other countries worldwide. All other trademarks are the property of their respective owners. All information provided is subject to change without notice.

info@digi.com





Стандарт Электрон Связь

Мы молодая и активно развивающаяся компания в области поставок электронных компонентов. Мы поставляем электронные компоненты отечественного и импортного производства напрямую от производителей и с крупнейших складов мира.

Благодаря сотрудничеству с мировыми поставщиками мы осуществляем комплексные и плановые поставки широчайшего спектра электронных компонентов.

Собственная эффективная логистика и склад в обеспечивает надежную поставку продукции в точно указанные сроки по всей России.

Мы осуществляем техническую поддержку нашим клиентам и предпродажную проверку качества продукции. На все поставляемые продукты мы предоставляем гарантию .

Осуществляем поставки продукции под контролем ВП МО РФ на предприятия военно-промышленного комплекса России , а также работаем в рамках 275 ФЗ с открытием отдельных счетов в уполномоченном банке. Система менеджмента качества компании соответствует требованиям ГОСТ ISO 9001.

Минимальные сроки поставки, гибкие цены, неограниченный ассортимент и индивидуальный подход к клиентам являются основой для выстраивания долгосрочного и эффективного сотрудничества с предприятиями радиоэлектронной промышленности, предприятиями ВПК и научно-исследовательскими институтами России.

С нами вы становитесь еще успешнее!

Наши контакты:

Телефон: +7 812 627 14 35

Электронная почта: sales@st-electron.ru

Адрес: 198099, Санкт-Петербург,
Промышленная ул, дом № 19, литера Н,
помещение 100-Н Офис 331