

LOW-NOISE J-FET INPUT OPERATIONAL AMPLIFIERS

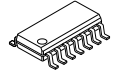
■ GENERAL DESCRIPTION

The NJM072C/082C/NJM074C/084C are JFET input operational amplifiers. They feature low input bias and offset currents, high input impedance and fast slew rate.

The low harmonic distortion and low noise make them ideally suit for amplifiers with high fidelity and audio amplifier applications.

In addition, the realization of a wide operating temperature reaches by a new design.

■ PACKAGE OUTLINE



NJM072CG / NJM072CAG
NJM082CG / NJM082CAG
Dual (SOP8)

NJM074CG / NJM074CAG
NJM084CG / NJM084CAG
Quad (SOP14)

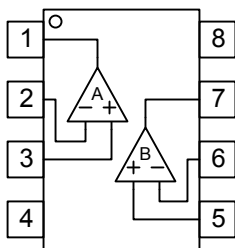
■ FEATURES

- Wide power supply range : ± 4 to ± 18 V
- Internal ESD protection : Human body model (HBM) ± 2000 V typ.
- High Input Resistance : $10^{12}\Omega$ typ.
- Wide temperature range : -40°C to $+105^\circ\text{C}$
- Bipolar Technology
- High Slew Rate : $13\text{V}/\mu\text{s}$ typ.
- Wide Unity Gain Bandwidth : 3MHz typ.

■ Input Offset Voltage

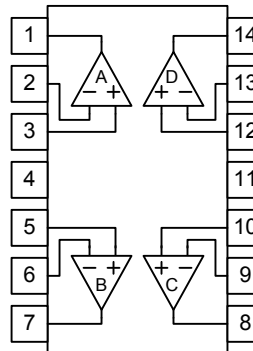
| NJM072C / 074C | NJM072CA / 074CA | NJM082C / 084C | NJM082CA / 084CA |
|----------------|------------------|----------------|------------------|
| 10mV max. | 6mV max. | 15mV max. | 6mV max. |

■ PIN CONFIGURATION (Top View)



- PIN FUNCTION**
1. A OUTPUT
 2. A -INPUT
 3. A +INPUT
 4. V^-
 5. B +INPUT
 6. B -INPUT
 7. B OUTPUT
 8. V^+

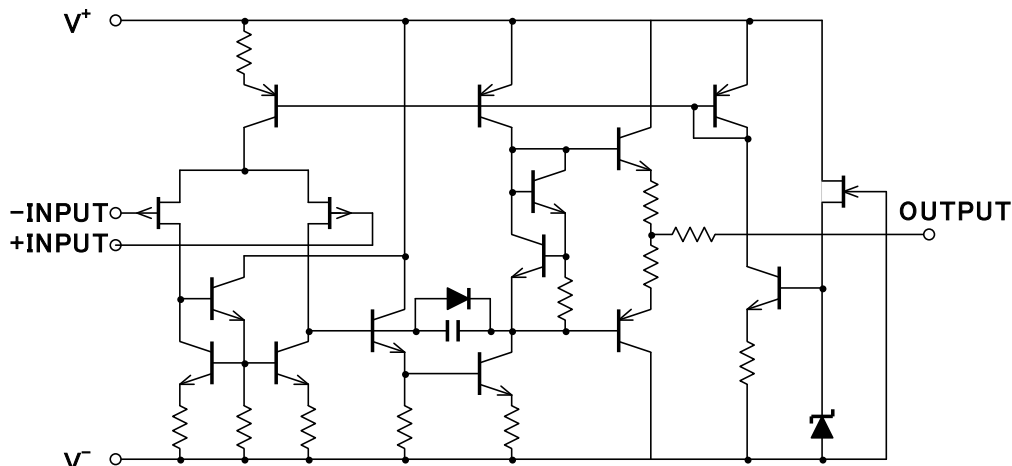
NJM072C / NJM082C
NJM072CA / NJM082CA



- PIN FUNCTION**
1. A OUTPUT
 2. A -INPUT
 3. A +INPUT
 4. V^+
 5. B +INPUT
 6. B -INPUT
 7. B OUTPUT
 8. C OUTPUT
 9. C -INPUT
 10. C +INPUT
 11. V^-
 12. D +INPUT
 13. D -INPUT
 14. D OUTPUT

NJM074C / NJM084C
NJM074CA / NJM084CA

■ EQUIVALENT CIRCUIT (Each Amplifier)



NJM072C/074C NJM072CA/074CA

NJM082C/084C NJM082CA/084CA

■ ABSOLUTE MAXIMUM RATINGS (Ta=25°C, unless otherwise noted.)

| PARAMETER | SYMBOL | RATINGS | UNIT |
|---|--------------------------------|---|------|
| Supply Voltage | V ⁺ /V ⁻ | ±18 | V |
| Differential Input Voltage ⁽¹⁾ | V _{ID} | ±36 | V |
| Input Voltage ⁽²⁾ | V _{IN} | V ⁻ -0.3 to V ⁺ +36 | V |
| Output Terminal Input Voltage | V _O | V ⁻ -0.3 to V ⁺ +0.3 | V |
| Power Dissipation | P _D | SOP8 : 690 ⁽³⁾ 1000 ⁽⁴⁾ SOP14 : 880 ⁽³⁾ 1200 ⁽⁴⁾ | mW |
| Operating Temperature Range | T _{opr} | -40 to +105 | °C |
| Storage Temperature Range | T _{stg} | -65 to +150 | °C |

(1) Differential voltage is the voltage difference between +INPUT and -INPUT.

(2) Input voltage is the voltage should be allowed to apply to the input terminal independent of the magnitude of V⁺.

The normal operation will establish when any input is within the Common Mode Input Voltage Range of electrical characteristics.

(3) EIA/JEDEC STANDARD Test board (76.2 x 114.3 x 1.6mm, 2layers, FR-4) mounting

(4) EIA/JEDEC STANDARD Test board (76.2 x 114.3 x 1.6mm, 4layers, FR-4) mounting

■ RECOMMENDED OPERATING CONDITIONS

| PARAMETER | SYMBOL | CONDITION | MIN. | TYP. | MAX. | UNIT |
|----------------|--------------------------------|-----------|------|------|------|------|
| Supply Voltage | V ⁺ /V ⁻ | Ta=25°C | ±4 | - | ±18 | V |

■ ELECTRICAL CHARACTERISTICS

V⁺/V⁻=±15V, Ta=25°C (unless otherwise noted)

() Applies to NJM082,NJM084

| PARAMETER | SYMBOL | CONDITION | NJM072C/NJM082C NJM074C/NJM084C | | | NJM072CA/NJM082CA NJM074CA/NJM084CA | | | UNIT |
|---------------------------------|----------------------|--|------------------------------------|------------------|------------------|--|----------|----------------|----------|
| | | | MIN. | TYP. | MAX. | MIN. | TYP. | MAX. | |
| Input Offset Voltage | V _{IO} | R _S =50Ω Ta=25°C 0°C < Ta < 70°C ⁽⁵⁾ | - | 3 | 10(15) 13(15) | - | 3 | 6(6) 7(7.5) | mV |
| Input Offset voltage drift | ΔV _{IO} /ΔT | R _S =50Ω 0°C < Ta < 70°C ⁽⁵⁾ | - | 18 | - | - | 18 | - | μV/°C |
| Input Offset Current | I _{IO} | Ta=25°C 0°C < Ta < 70°C ⁽⁵⁾ | - | 5 | 50(200) 10 | - | 5 | 50(100) 2 | pA nA |
| Input Bias Current | I _B | Ta=25°C 0°C < Ta < 70°C ⁽⁵⁾ | - | 30 | 200(400) 7 | - | 30 | 200 7 | pA nA |
| Input Resistance | R _{IN} | | - | 10 ¹² | - | ← | ← | ← | Ω |
| Open Loop Gain | A _V | R _L ≥2kΩ, V _O =±10V Ta=25°C 0°C < Ta < 70°C ⁽⁵⁾ | 25 15 | 200 - | - - | 50 25 | 200 - | - - | V/mV |
| Maximum Output Voltage Swing | V _{OM} | R _L =10kΩ Ta=25°C 0°C < Ta < 70°C ⁽⁵⁾ R _L =2kΩ 0°C < Ta < 70°C ⁽⁵⁾ | ±12 ±12 | ±135 - | - - | ← ← | ← ← | ← ← | V |
| Input Common Mode Voltage Range | V _{ICM} | ≥CMR MIN | ±11 | -12 to 15 | - | ← | ← | ← | V |
| Common Mode Rejection Ratio | CMR | V _{ICM} =V _{ICMmin} , R _S ≤10kΩ | 70 | 100 | - | 75 | 100 | - | dB |
| Supply Voltage Rejection Ratio | SVR | V ⁺ /V ⁻ =±9V to ±15V R _S ≤10kΩ | 70 | 100 | - | 80 | 100 | - | dB |
| Operating Current | I _{CC} | No signal each amplifier | - | 1.4 | 2.5(2.8) | ← | ← | ← | mA |
| Slew rate | SR | V _{IN} =10Vpp, R _L =2kΩ, C _L =100pF See Figure1 | 8 | 13 | - | ← | ← | ← | V/μs |
| Unity Gain Frequency | f _T | | - | 3 | - | ← | ← | ← | MHz |

NJM072C/074C NJM072CA/074CA NJM082C/084C NJM082CA/084CA

| PARAMETER | SYMBOL | CONDITION | NJM072C/NJM082C NJM074C/NJM084C | | | NJM072CA/NJM082CA NJM074CA/NJM084CA | | | UNIT |
|---------------------------------|----------|--|------------------------------------|-------|------|--|------|------|----------------|
| | | | MIN. | TYP. | MAX. | MIN. | TYP. | MAX. | |
| Rise time | t_r | $V_{IN}=20mV_{pp}$, $R_L=2k\Omega$, $C_L=100pF$ See Figure1 | - | 0.1 | - | ← | ← | ← | us |
| Overshoot factor | K_{OV} | $V_{IN}=20mV_{pp}$, $R_L=2k\Omega$, $C_L=100pF$ See Figure1 | - | 20 | - | ← | ← | ← | % |
| Total Harmonic Distortion | THD | $V_{IN}=6V_{rms}$, $G_V=0dB$ $R_L=2k\Omega$, $R_S=1k\Omega$, $f=1kHz$ | - | 0.003 | - | ← | ← | ← | % |
| Equivalent Input Noise Voltage1 | V_{NI} | $R_S=20\Omega$, $f=10Hz$ to $10kHz$ | - | 4 | - | ← | ← | ← | μV_{rms} |
| Equivalent Input Noise Voltage2 | e_n | $R_S=20\Omega$, $f=1kHz$ | - | 18 | - | ← | ← | ← | nV/\sqrt{Hz} |
| Equivalent Input Noise Current | i_n | $R_S=20\Omega$, $f=1kHz$ | - | 0.01 | - | ← | ← | ← | pA/\sqrt{Hz} |
| Channel Separation | CS | $G_V=40dB$ | - | 120 | - | ← | ← | ← | dB |

(5) This parameter is not 100% test.

■ MEASUREMENT CIRCUITS

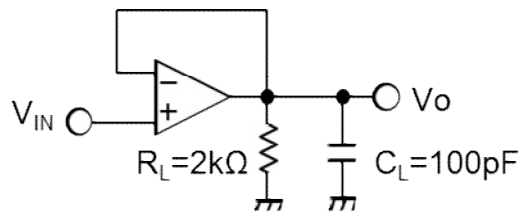


Figure1. Voltage Follower

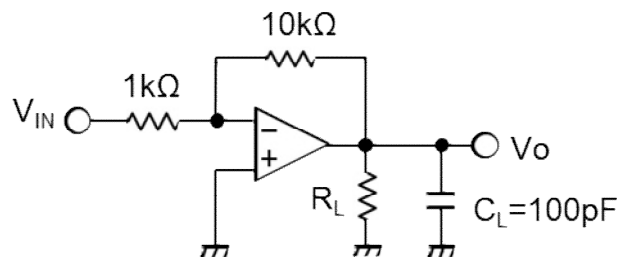
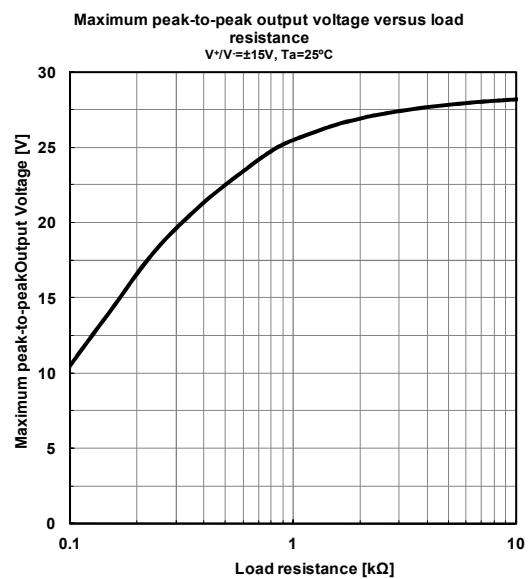
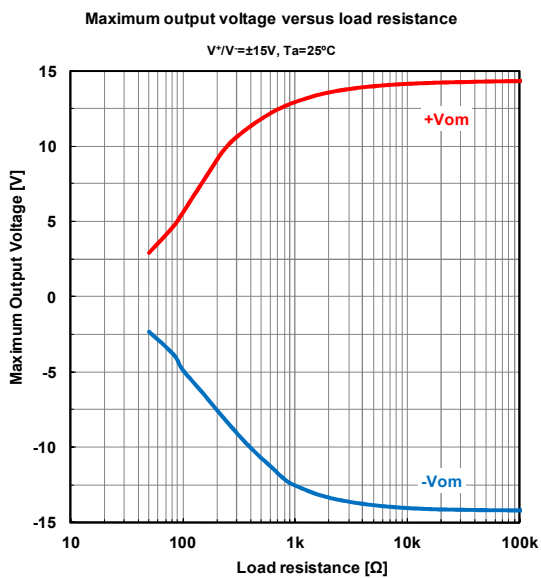
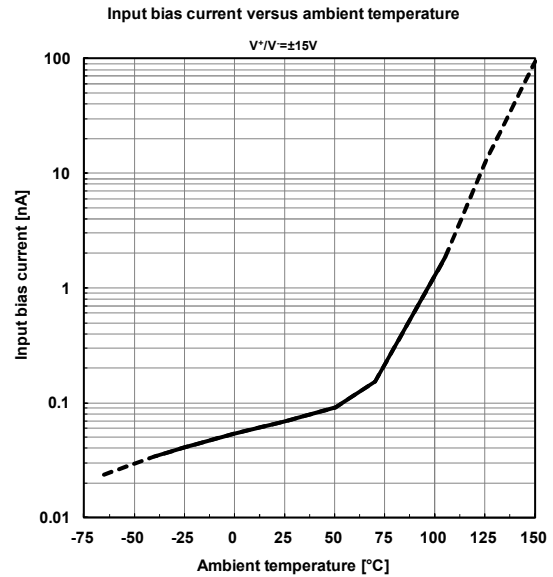
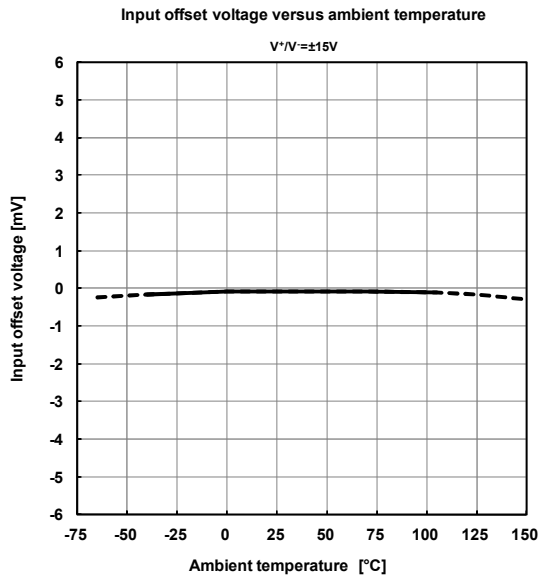
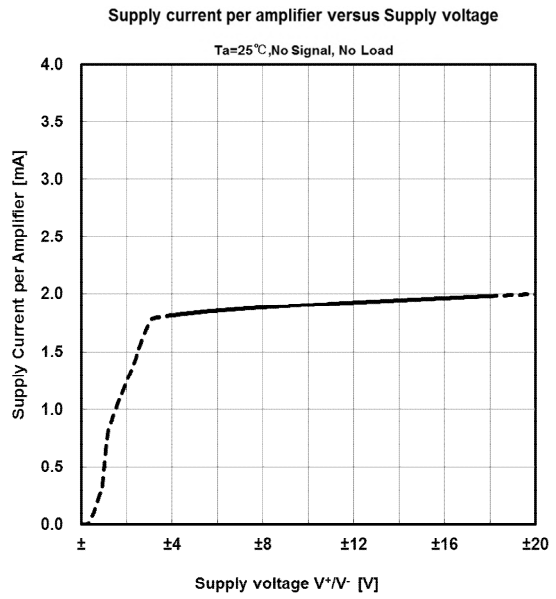
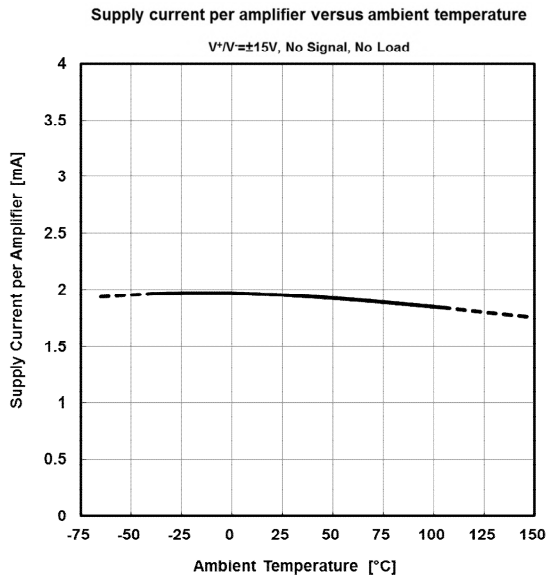


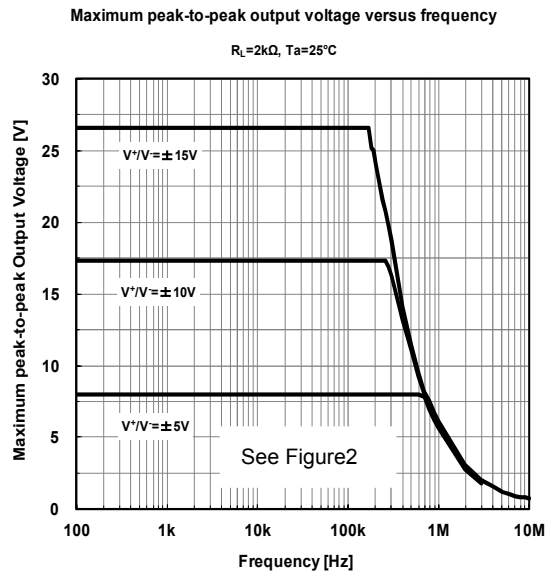
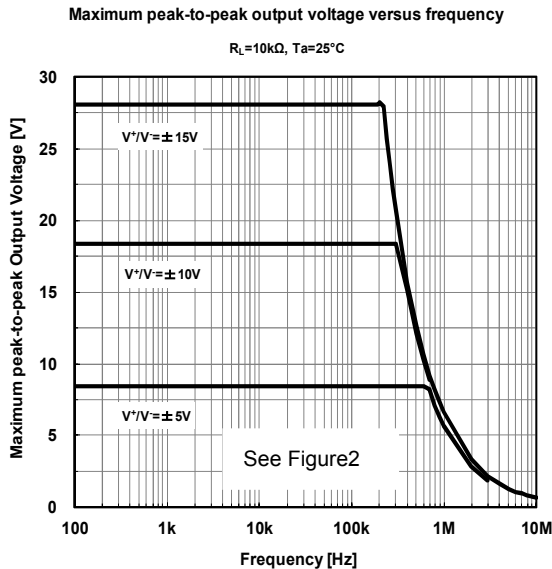
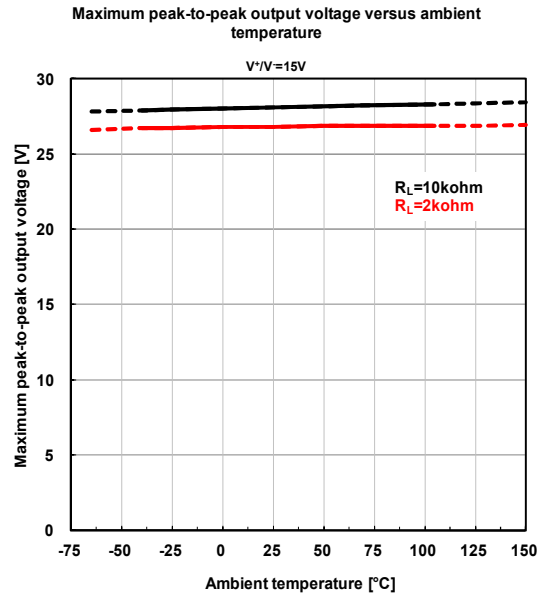
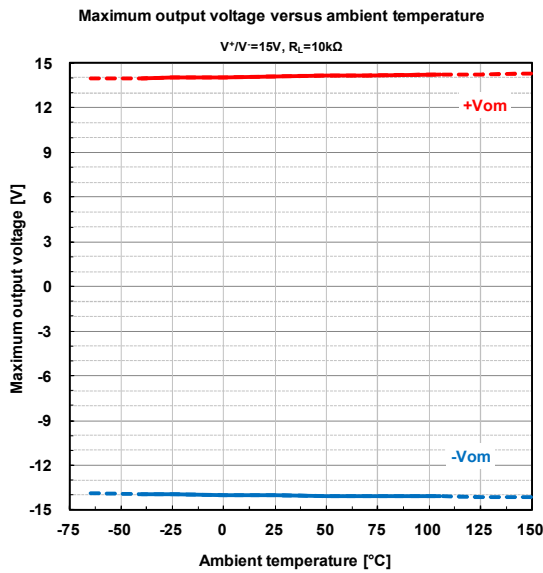
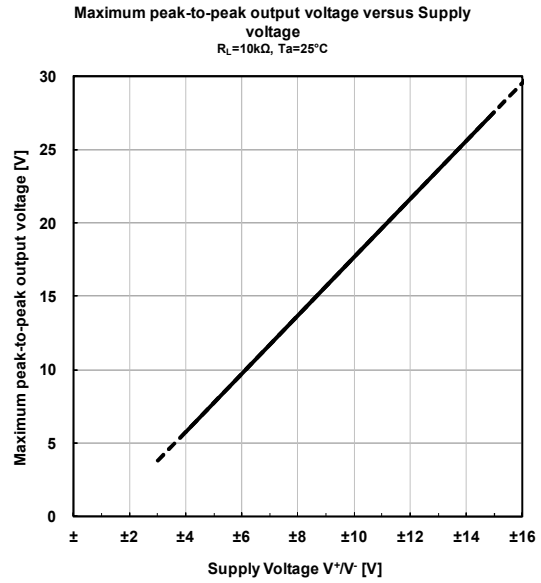
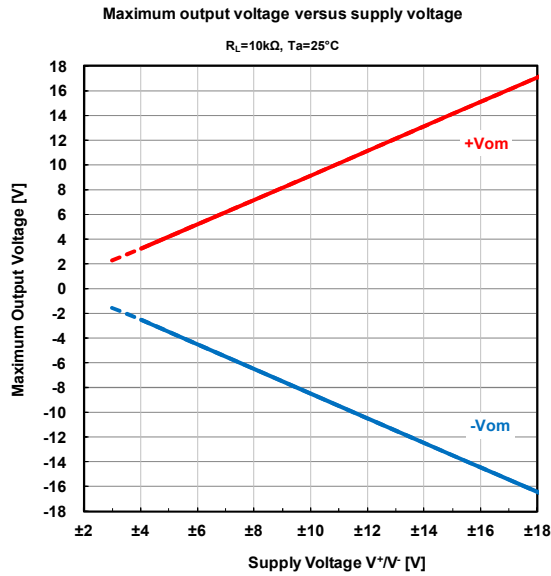
Figure2. 20dB Inverting Amplifier (*)

(*) 20dB Inverting Amplifier uses a Maximum Output Voltage vs. Frequency on page 5 and 6.

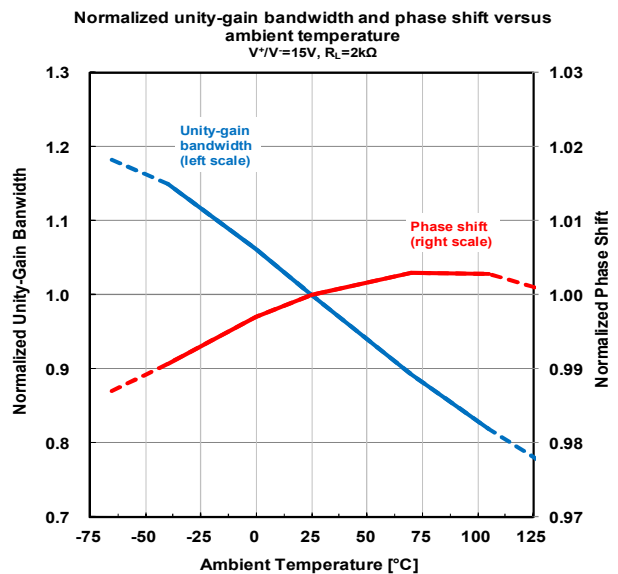
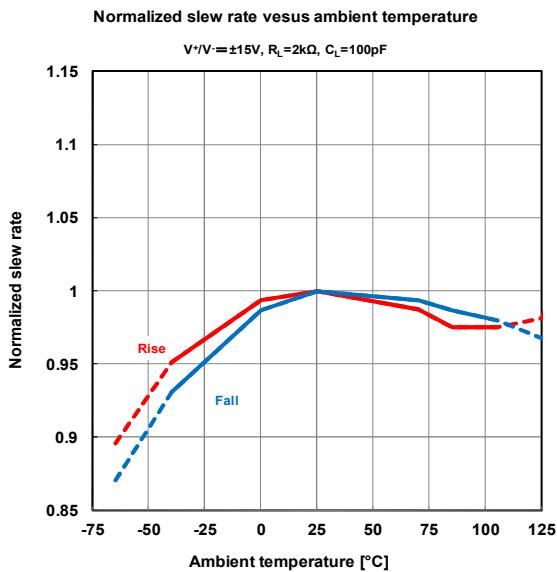
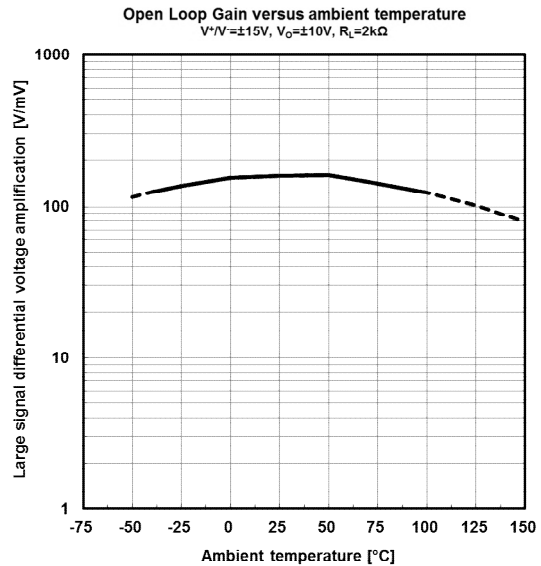
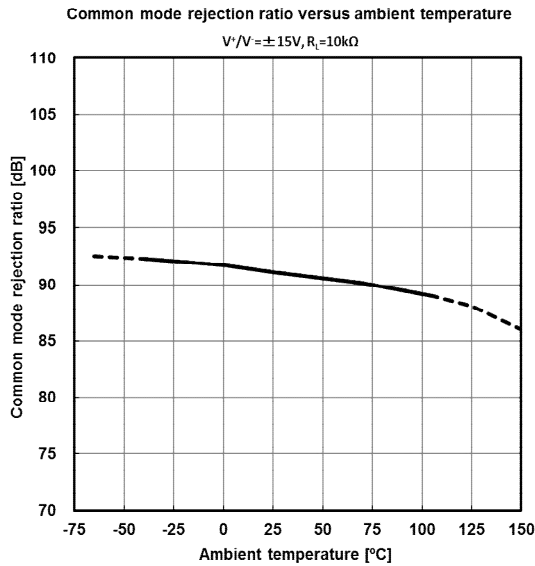
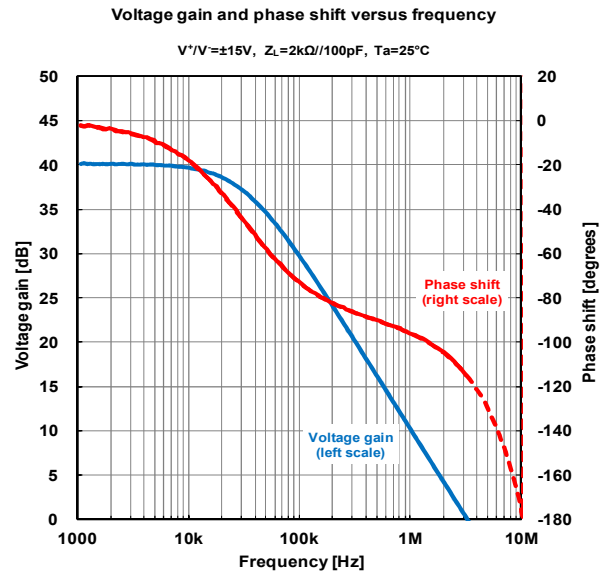
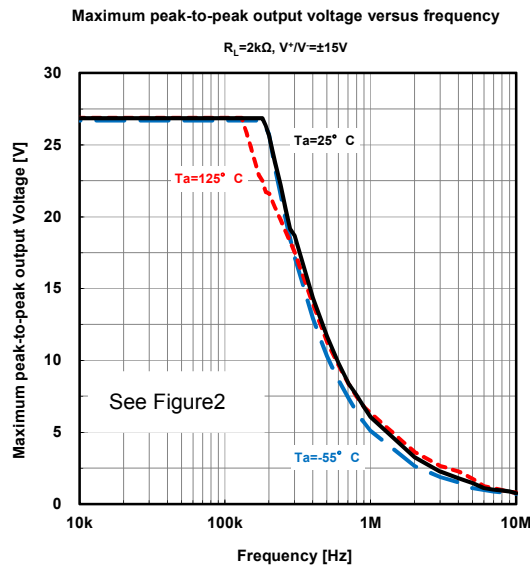
■ TYPICAL CHARACTERISTICS



■ TYPICAL CHARACTERISTICS

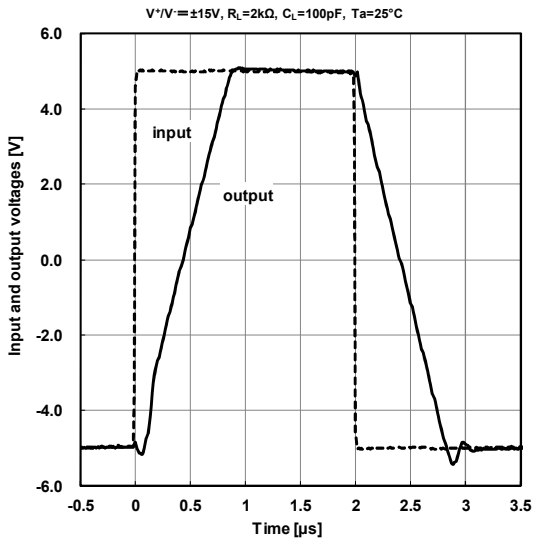


■ TYPICAL CHARACTERISTICS

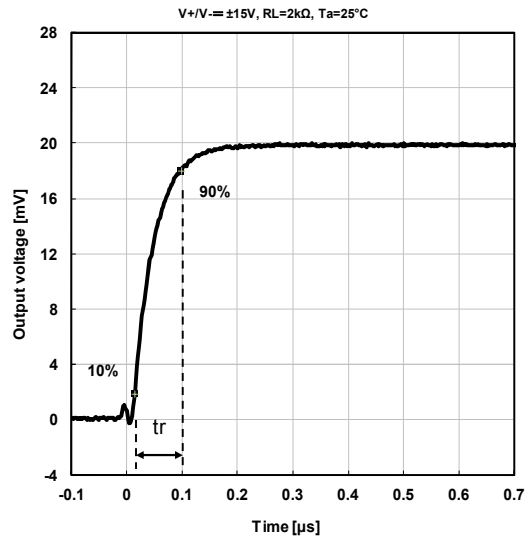


■ TYPICAL CHARACTERISTICS

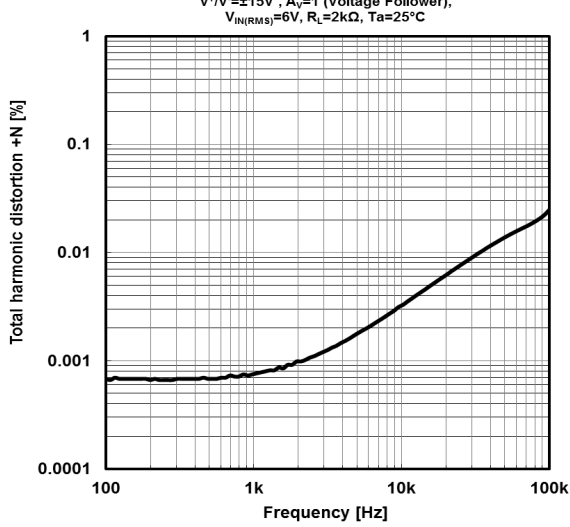
Voltage follower large signal pulse response



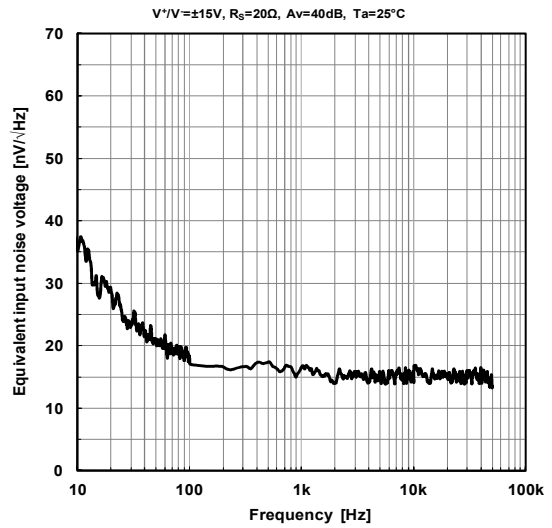
Output voltage versus elapsed time



Total harmonic distortion versus frequency

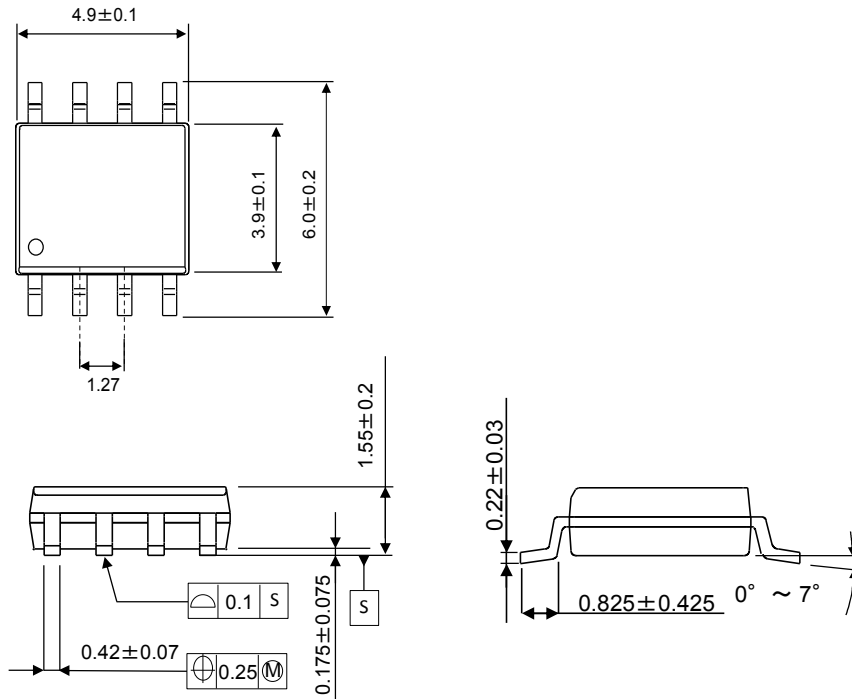


Equivalent input noise voltage versus frequency

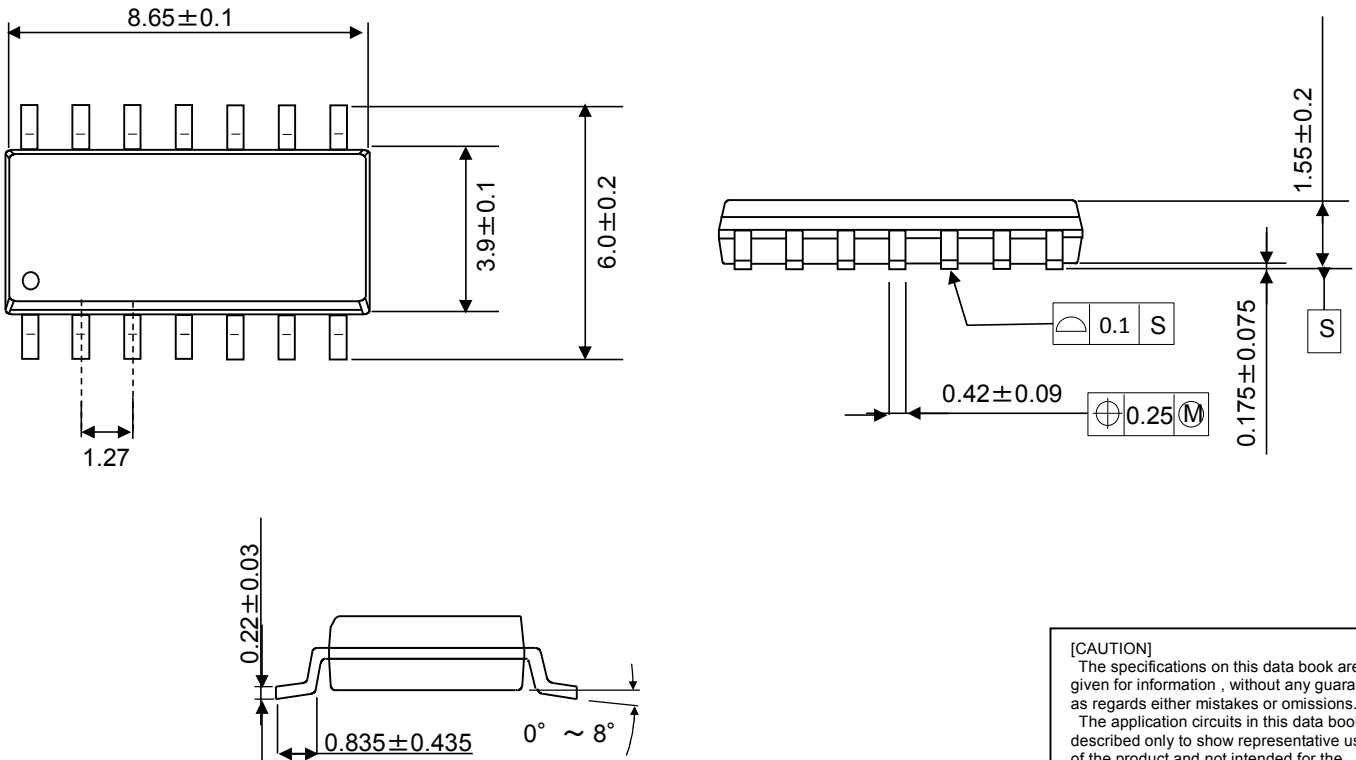


■ PACKAGE OUTLINE UNIT : mm

SOP8



SOP14



[CAUTION]
 The specifications on this data book are only given for information, without any guarantee as regards either mistakes or omissions.
 The application circuits in this data book are described only to show representative usages of the product and not intended for the guarantee or permission of any right including the industrial rights.

Mouser Electronics

Authorized Distributor

Click to View Pricing, Inventory, Delivery & Lifecycle Information:

[NJR:](#)

[NJM084CG-TE2](#) [NJM082CAG-TE2](#) [NJM082CG-TE2](#) [NJM074CG-TE2](#) [NJM074CAG-TE2](#) [NJM072CG-TE2](#)
[NJM084CAG-TE2](#) [NJM072CAG-TE2](#)



**Стандарт
Электрон
Связь**

Мы молодая и активно развивающаяся компания в области поставок электронных компонентов. Мы поставляем электронные компоненты отечественного и импортного производства напрямую от производителей и с крупнейших складов мира.

Благодаря сотрудничеству с мировыми поставщиками мы осуществляем комплексные и плановые поставки широчайшего спектра электронных компонентов.

Собственная эффективная логистика и склад в обеспечивает надежную поставку продукции в точно указанные сроки по всей России.

Мы осуществляем техническую поддержку нашим клиентам и предпродажную проверку качества продукции. На все поставляемые продукты мы предоставляем гарантию .

Осуществляем поставки продукции под контролем ВП МО РФ на предприятия военно-промышленного комплекса России , а также работаем в рамках 275 ФЗ с открытием отдельных счетов в уполномоченном банке. Система менеджмента качества компании соответствует требованиям ГОСТ ISO 9001.

Минимальные сроки поставки, гибкие цены, неограниченный ассортимент и индивидуальный подход к клиентам являются основой для выстраивания долгосрочного и эффективного сотрудничества с предприятиями радиоэлектронной промышленности, предприятиями ВПК и научно-исследовательскими институтами России.

С нами вы становитесь еще успешнее!

Наши контакты:

Телефон: +7 812 627 14 35

Электронная почта: sales@st-electron.ru

Адрес: 198099, Санкт-Петербург,
Промышленная ул, дом № 19, литера Н,
помещение 100-Н Офис 331