

# 0305 Combined Switch / Lampholder for Freezers

## Approvals and specifications



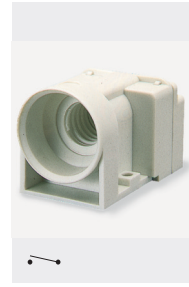
0.06A 250Vac 25 T 85 (0305 only)



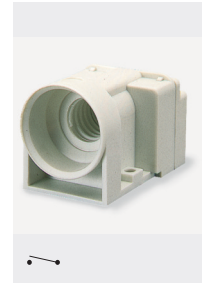
UL 15W 125/250Vac (0305 only)  
UL 65°C, file E116391 (0305 only)

Switched units have  $\mu$  contact gap.  
Technical data on pages 4 & 5.

- ▶ E12 (12mm or candelabra) and E14 (14mm or SES) lamps
- ▶ Switch rating up to 0.06A, 250V ac
- ▶ Auto switching
- ▶ Mercury free
- ▶ Available with right or left hand orientation
- ▶ Available as lampholder only



C0305RT - - -



C0305LT - - -

**C 0305 R T - - -**

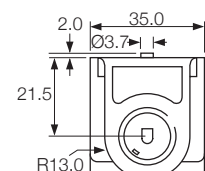
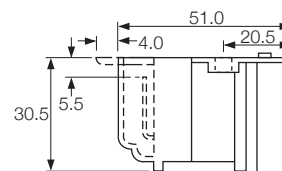
TERMINAL FUNCTION MOUNTING BODY COLOUR, ETC

▶ TERMINAL	▶ FUNCTION	▶ MOUNTING	▶ BODY	▶ OPTIONS
<p><b>C</b></p> <p>6.3 x 0.8</p>	<p><b>0305</b> (E14)</p> <p>ON - OFF Switch and Lampholder</p> <p><b>0306</b> (E12)</p> <p>ON - OFF Switch and Lampholder</p>	<p><b>L</b></p> <p>For Left hinged lid for 0305/0306 switches, not for 0307 lampholder</p> <p>View from bulb end</p> <p><b>R</b></p> <p>For Right hinged lid for 0307 lampholder or 0305/0306 switches</p> <p>View from bulb end</p>	<p><b>T</b></p> <p>Body without flange for 0305/0306 switches</p> <p>Top view</p> <p><b>S</b></p> <p>Body with rear flange for 0307 lampholder and for 0305/0306 switches</p> <p>Top view</p>	<p><b>Colour</b></p> <p>Call sales for colours. A full range is available for large orders.</p>

## Dimensions (mm) and Properties

The mechanism of this switch/lampholder does not contain mercury and may be safely used in food storage equipment.

When fitted to the lid of a freezer storage cabinet, the switch will operate the lamp when the lid is opened to the angle of tilt shown in the drawing.



# 0055 Door Switches



C0055RB ---



C0056RB ---

- ▶ Ratings up to 0.2A, 250V ac
- ▶ High temperature rating up to 125°C
- ▶ Long overtravel
- ▶ Choice of terminal orientation

## Approvals and specifications



**0055 & 0056**  
**0.2(0.2)A 250Vac 25T125 5E4**  
**(50,000 operations)**

µ contact gap

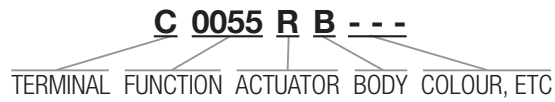
Technical data on pages 4 & 5



C0055RB ---

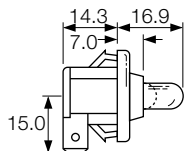


C0056RB ---

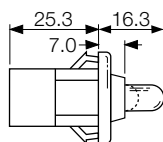


▶ TERMINAL	▶ FUNCTION	▶ ACTUATOR	▶ BODY	▶ OPTIONS				
<p><b>C</b></p> <p>6.3 x 0.8</p> <p>9.1</p>	<p><b>0055</b></p> <p>ON - OFF (momentary OFF) 90° terminals</p>	<p><b>R</b></p>	<p><b>B</b></p> <p>Panel cut-out</p> <p>Panel thickness</p> <table border="0"> <tr> <td>0055</td> <td>1.0 - 1.6</td> </tr> <tr> <td>0056</td> <td>1.0 - 2.6</td> </tr> </table> <p>Flange</p>	0055	1.0 - 1.6	0056	1.0 - 2.6	<p><b>Finish</b></p> <p>Gloss finish only</p> <p><b>Colour</b></p> <p>White or black</p> <p>Call sales for custom colours.</p>
0055	1.0 - 1.6							
0056	1.0 - 2.6							
<p><b>H (0056 only)</b></p> <p>4.8 x 0.8</p> <p>9.1</p>	<p><b>0056</b></p> <p>ON - OFF (momentary OFF) Straight terminals</p>							

**Dimensions (mm)**  
**C0055RB**



**C0056RB**



# 3005 Refrigerator Door Switches Splash resistant

## Approvals and specifications



**3005 25W 25T85 5E4 (50,000 Operations) 250Vac**  
**3006 65W 25T85 5E4 (50,000 Operations) 250Vac**



**UL 0.3A 250Vac**  
**UL 0.2A 125Vac**

These products require 3mm minimum actuator stroke to ensure switch action and rating above.

μ contact gap.  
 Technical data on pages 4 & 5.

\*Only the black variant is approved

- ▶ Door switches
- ▶ Momentary on and momentary off switching
- ▶ Splash resistant
- ▶ Choice of terminal orientation
- ▶ Choice of actuators



C3005CB ---



C3005BL ---

\*White version shown is unapproved

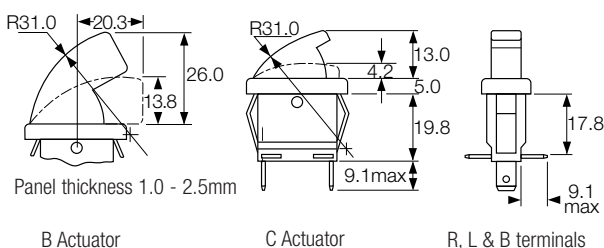
## C 3005 C B ---

TERMINAL FUNCTION ACTUATOR BODY COLOUR, ETC

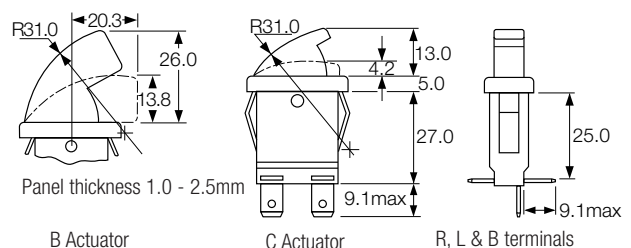
▶ TERMINAL	▶ FUNCTION	▶ ACTUATOR	▶ BEZEL / TERM ORIENTATION	▶ OPTIONS
<b>C</b>  6.3 x 0.8	<b>3005</b>  ON - OFF (momentary OFF) 1mm max travel to OFF position	<b>B</b>  26.0	<b>R L B</b>  Terminal direction (viewed from hinge end) Panel cut-out: 12.1/12.2, 25.4, 25.5 Bezel: 14.0, 30.2 Bezel Profile: 5.0	<b>Finish</b> Gloss finish only  <b>Colour</b> White is standard  Call sales for custom colours. A full range is available for large orders.
<b>H</b>  4.8 x 0.8	<b>3006</b>  ON - OFF (momentary ON) 3mm min travel to ON position	<b>C</b>  13.0		

### Dimensions (mm) (C terminals shown)

#### 3005

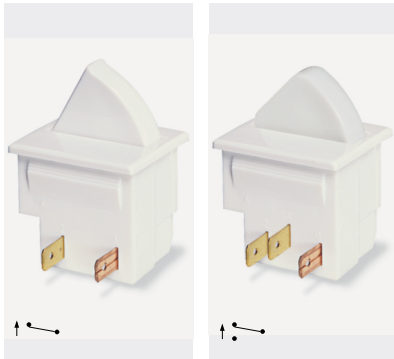


#### 3006



refrigerator switches

# 3100 Refrigerator Door Switches Splash resistant



E3102AA --- E3111BA ---

- ▶ Door switches
- ▶ Ratings up to 5A, 250V ac
- ▶ Splash resistant
- ▶ Changeover, momentary ON and momentary OFF
- ▶ Choice of actuators

## Approvals and specifications



5A 250Vac 25T85 5E4 (50,000 Operations)



UL CSA 5A 250Vac

UL 85°C, file E45221, CSA file LR10990

μ contact gap.

Technical data on pages 4 & 5.

Sealed terminals option available. Call sales for details.

## E 3102 A A ---

TERMINAL FUNCTION ACTUATOR BODY COLOUR, ETC

▶ TERMINAL	▶ FUNCTION	▶ ACTUATOR	▶ BODY	▶ OPTIONS
<p><b>E</b></p> <p>4.8 x 0.5</p> <p>7.9</p> <p>For sealed terminals call sales</p>	<p><b>3101</b></p> <p>ON - OFF (momentary ON)</p> <p><b>3102</b></p> <p>ON - OFF (momentary OFF)</p> <p><b>3111</b></p> <p>ON - ON (momentary 1 side)</p>	<p><b>A</b></p> <p>17.6 max</p> <p><b>B</b></p> <p>15.6 max</p> <p><b>C</b></p> <p>23.0 max</p> <p><b>D</b></p> <p>17.1 max</p>	<p><b>A</b></p> <p>Panel cut-out Panel thickness 1.0 - 2.5mm</p>	<p><b>Finish</b> Gloss finish only</p> <p><b>Colour</b> White is standard</p> <p>Call sales for custom colours. A full range is available for large orders.</p>

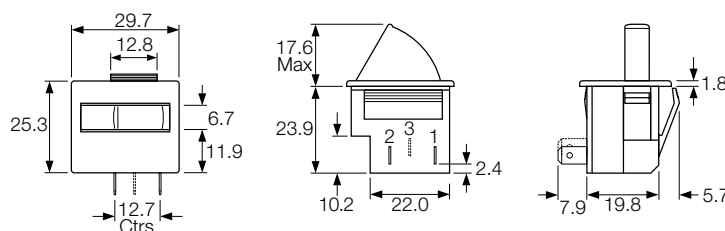
### Dimensions (mm) ("A" actuator shown)

**3101** uses terminals 1,2

**3102** uses terminals 1,2

**3111** uses terminals 1,2,3

For details of actuator travel and switching angles call sales.



# 3140 Refrigerator Door Switches Splash resistant

## Approvals and specifications



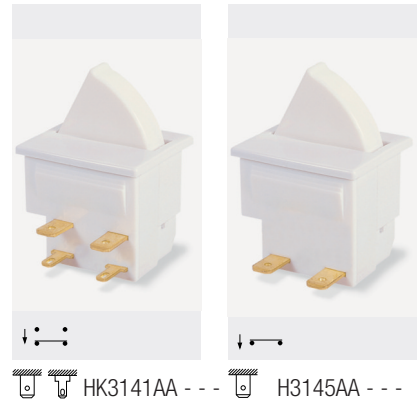
5A 250Vac 25T85 5E4 (50,000 Operations)



UL CSA 5A 250Vac  
UL 85°C, file E45221, CSA file LR10990

3141,  $\mu$  contact gap.  
3145 and 3146, 3mm contact gap.  
Technical data on pages 4 & 5.  
Sealed terminals option available. Call sales for details.

- ▶ Door switches
- ▶ Ratings up to 5A, 250V ac
- ▶ Splash resistant
- ▶ Momentary action
- ▶ Choice of actuators
- ▶ 2 circuit switch



**HK 3141 A A - - -**

TERMINALS    FUNCTION    ACTUATOR    BODY    COLOUR, ETC

▶ TERMINAL	▶ FUNCTION	▶ ACTUATOR	▶ BODY	▶ OPTIONS
<p><b>H</b></p> <p>4.8 x 0.8</p> <p>Standard format is H terminals in positions 1 &amp; 2 and K terminals in positions 3 &amp; 4</p> <p>For sealed terminals call sales</p>	<p><b>3141</b></p> <p>ON - ON (momentary)</p> <p><b>3145</b></p> <p>ON - OFF (momentary OFF)</p> <p><b>3146</b></p> <p>ON - OFF (momentary ON)</p>	<p><b>A</b></p> <p><b>B</b></p> <p><b>C</b></p> <p><b>D</b></p>	<p><b>A</b></p> <p>Optional cut-out for orientation</p> <p>Panel cut-out Panel thickness 1.0 - 2.5mm</p>	<p><b>Finish</b> Gloss finish only</p> <p><b>Colour</b> White is standard</p> <p>Call sales for custom colours. A full range is available for large orders.</p> <p><b>Reversed Actuators</b> Also available with actuators reversed.</p> <p>Order as: 3151 (3141 type) 3155 (3145 type) 3156 (3146 type)</p>

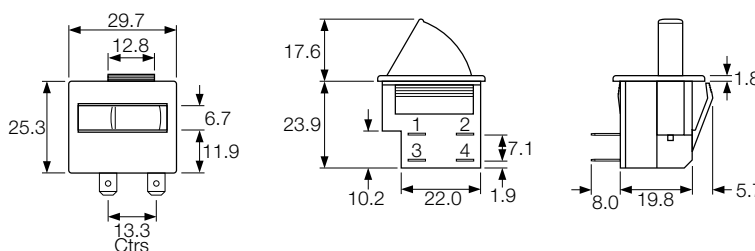
### Dimensions (mm) ("A" actuator shown)

**3141** uses terminals 1,2,3,4

**3145** uses terminals 3,4

**3146** uses terminals 1,2

For details of actuator travel and switching angles call sales.





## Стандарт Электрон Связь

Мы молодая и активно развивающаяся компания в области поставок электронных компонентов. Мы поставляем электронные компоненты отечественного и импортного производства напрямую от производителей и с крупнейших складов мира.

Благодаря сотрудничеству с мировыми поставщиками мы осуществляем комплексные и плановые поставки широчайшего спектра электронных компонентов.

Собственная эффективная логистика и склад в обеспечивает надежную поставку продукции в точно указанные сроки по всей России.

Мы осуществляем техническую поддержку нашим клиентам и предпродажную проверку качества продукции. На все поставляемые продукты мы предоставляем гарантию .

Осуществляем поставки продукции под контролем ВП МО РФ на предприятия военно-промышленного комплекса России , а также работаем в рамках 275 ФЗ с открытием отдельных счетов в уполномоченном банке. Система менеджмента качества компании соответствует требованиям ГОСТ ISO 9001.

Минимальные сроки поставки, гибкие цены, неограниченный ассортимент и индивидуальный подход к клиентам являются основой для выстраивания долгосрочного и эффективного сотрудничества с предприятиями радиоэлектронной промышленности, предприятиями ВПК и научно-исследовательскими институтами России.

С нами вы становитесь еще успешнее!

### Наши контакты:

**Телефон:** +7 812 627 14 35

**Электронная почта:** [sales@st-electron.ru](mailto:sales@st-electron.ru)

**Адрес:** 198099, Санкт-Петербург,  
Промышленная ул, дом № 19, литера Н,  
помещение 100-Н Офис 331