

LTC3864

55V Low I_Q Step-Down DC/DC Converter with 100% Duty Cycle Capability

DESCRIPTION

Demonstration circuit 1722A is a high voltage, current mode DC/DC step-down converter featuring the LTC[®]3864.

The board operates from an input range of 3.5V to 55V, and provides a 5V, 2A output when the input exceeds 5V. The PMOSFET architecture allows it to operate seamlessly up to 100% duty cycle, and function as a saturated switch below the regulation threshold, down to $3.5V_{IN}$. It operates at 350kHz and may be synchronized to an external clock. A soft-start feature controls output voltage slew rate at start-up, reducing current surge and voltage overshoot. Burst Mode[®] operation that improves efficiency at light loads can be enabled with a jumper. A power good output signal is provided. The demonstration board has options

for larger MOSFET and diode packages on the back of the board for higher output current requirements.

This board is suitable for a wide range of automotive, telecom, industrial, and other applications. The LTC3864 is available in small 12-pin thermally enhanced MSOP and DFN packages. For other output requirements, see the LTC3864 data sheet or contact the LTC factory.

Design files for this circuit board are available at <http://www.linear.com/demo/DC1722A>

LT, LT, LTC, LTM, Linear Technology, Burst Mode and the Linear logo are registered trademarks of Linear Technology Corporation. All other trademarks are the property of their respective owners.

PERFORMANCE SUMMARY Specifications are at $T_A = 25^\circ\text{C}$

SYMBOL	PARAMETER	CONDITIONS	MIN	TYP	MAX	UNITS
V_{IN}	Input Supply Range		3.5		55	V
V_{OUT}	Output Voltage			5.0		V
I_{OUT}	Output Current Range, Continuous		0		2	A
f_{SW}	Switching (Clock) Frequency			350		kHz
$V_{OUT(P-P)}$	Output Ripple	$V_{IN} = 14V, I_{OUT} = 2A$ (20MHz BW)		15		mV _{P-P}
V_{REG}	Output Regulation	Line and Load ($5.5V_{IN}$ to $55V_{IN}$, $0A_{OUT}$ to $2A_{OUT}$)		0.23		%
P_{OUT}/P_{IN}	Efficiency (See Figure 3)	$V_{IN} = 14V, I_{OUT} = 2A$		84		%
	Approximate Size	Component Area x Top Component Height		$0.6 \times 0.6 \times 0.14$		Inches

QUICK START PROCEDURE

Demonstration circuit 1722 is easy to set up to evaluate the performance of the LTC3864. Refer to Figure 1 for proper measurement equipment setup and follow the procedure below:

NOTE: When measuring the output voltage ripple, care must be taken to avoid a long ground lead on the oscilloscope probe. Measure the output voltage ripple by touching the probe tip and ground ring directly across the last output capacitor as shown in Figure 1.

1. Set an input power supply that is capable of 3.5V to 55V to 6V. Then turn off the supply.
2. With power off, connect the supply to the input terminals V_{IN} and GND.
 - a. Input voltages lower than 3.5V can keep the converter from turning on due to the undervoltage lockout feature of the LTC3864.
 - b. If efficiency measurements are desired, an ammeter capable of measuring $2A_{DC}$ or a resistor shunt can be put in series with the input supply in order to measure the DC1722A's input current.
 - c. A voltmeter with a capability of measuring at least 55V can be placed across the input terminals in order to get an accurate input voltage measurement.

3. Turn on the power at the input.

NOTE: Make sure that the input voltage never exceeds 55V.

4. Check for the proper output voltage of 5V. Turn off the power at the input.
5. Once the proper output voltage is established, connect a variable load capable of sinking 2A at 5V to the output terminals V_{OUT} and GND. Set the current for 0A.
 - a. If efficiency measurements are desired, an ammeter or a resistor shunt that is capable of handling $2A_{DC}$ can be put in series with the output load in order to measure the DC1722A's output current.
 - b. A voltmeter with a capability of measuring at least 5V can be placed across the output terminals in order to get an accurate output voltage measurement.
6. Turn on the power at the input.

NOTE: If there is no output, temporarily disconnect the load to make sure that the load is not set too high.

7. Once the proper output voltage is again established, adjust the load and/or input within the operating range and observe the output voltage regulation, ripple voltage, efficiency and other desired parameters.

QUICK START PROCEDURE

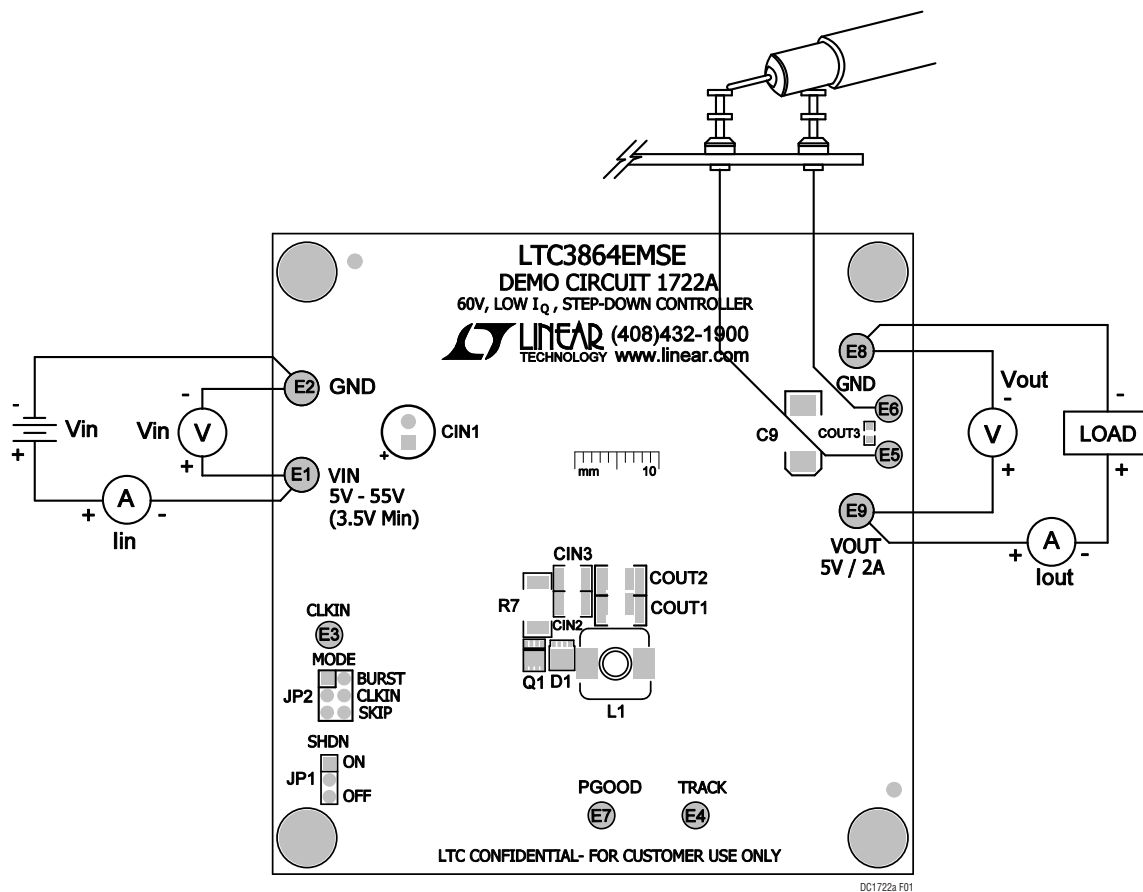


Figure 1. Proper Measurement Equipment Setup

QUICK START PROCEDURE

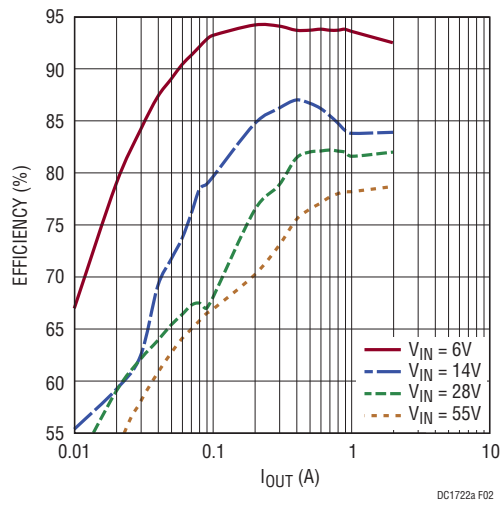


Figure 2. Efficiency with Burst Mode Operation at Light Loads

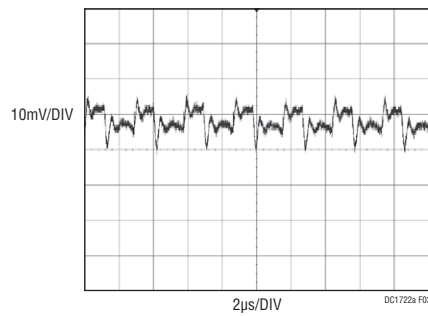


Figure 3. Output Ripple at 14V_{IN} and 2A_{OUT} (10mV, 2µs/DIV, 20MHz)

QUICK START PROCEDURE

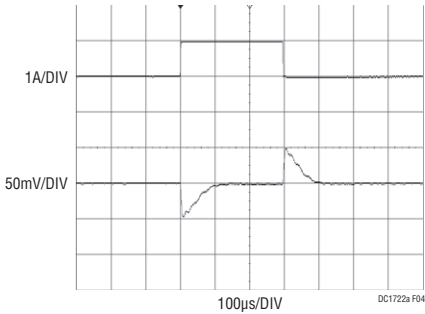


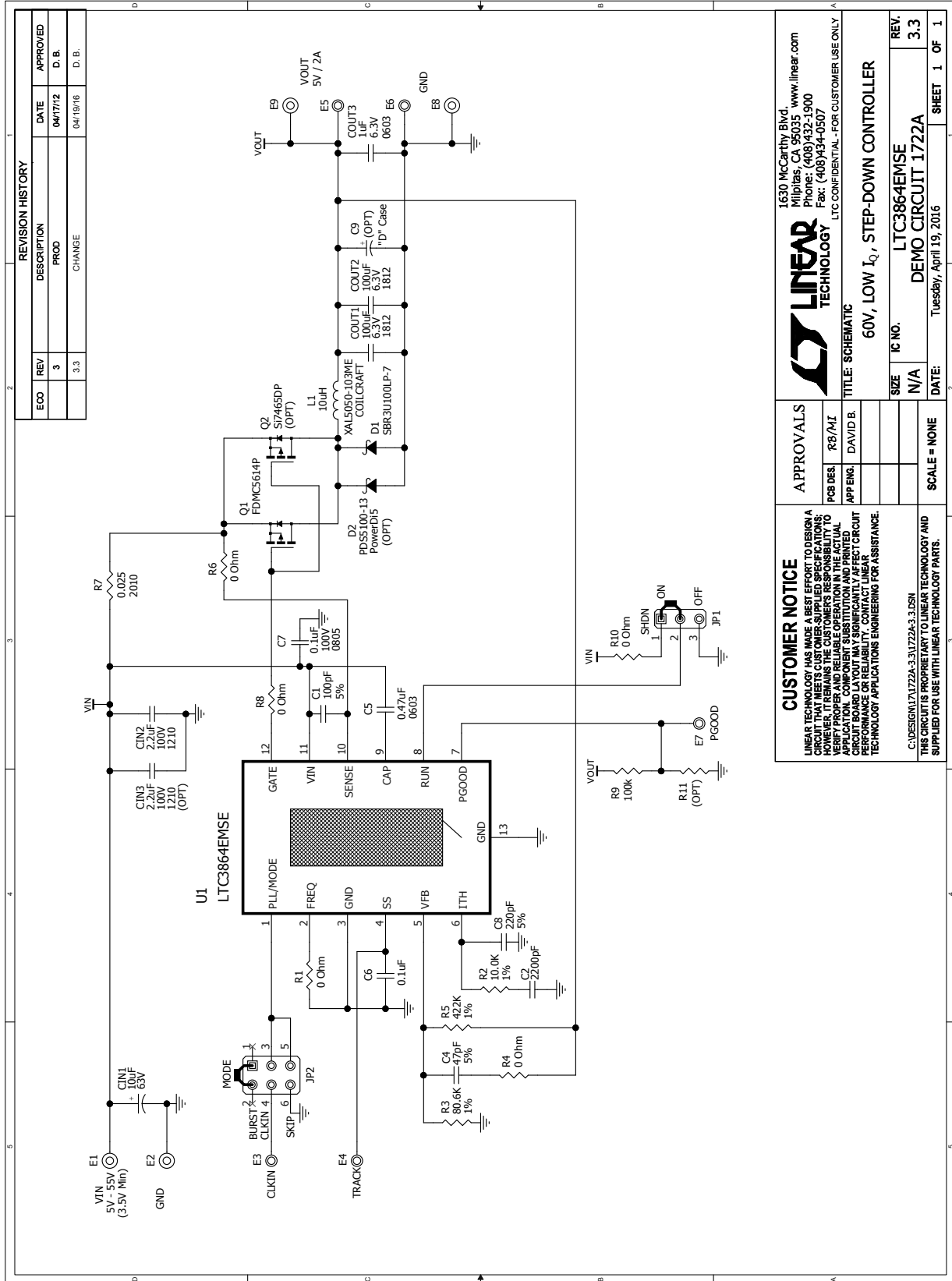
Figure 4. Transient Response Waveform at 14V_{IN} and 1A - 2A - 1A_{OUT} (1A, 50mV, 100µs/DIV)

DEMO MANUAL DC1722A

PARTS LIST

ITEM	QTY	REFERENCE	PART DESCRIPTION	MANUFACTURER/PART NUMBER
Required Circuit Components				
1	1	CIN1	CAP, 10 μ F 20% 63V ALUM	SUN ELEC. 63HEH10M
2	1	CIN2	CAP, 1210 2.2 μ F 10% 100V X7R	MURATA GRM32ER72A225KA35L
3	2	COUT1, COUT2	CAP, 1812 100 μ F 20% 6.3V X5R	TDK C4532X5R0J107M
4	1	COUT3	CAP, 0603 1 μ F 10% 6.3V X5R	TAIYO YUDEN JMK107BJ105KA-T
5	1	C1	CAP, 0402 100pF 5% 25V NPO	AVX 04023A101JAT2A
6	1	C2	CAP, 0402 220pF 10% 25V X7R	AVX 04023C222KAT2A
7	1	C4	CAP, 0402 47pF 5% 25V NPO	AVX 04023A470JAT2A
8	1	C5	CAP, 0603 0.47 μ F 20% 16V X7R	AVX 0603YC474MAT2A
9	1	C6	CAP, 0402 0.1 μ F 20% 16V X5R	AVX 0402YD104MAT2A
10	1	C7	CAP, 0805 0.1 μ F 20% 100V X5R	TDK C2012X5R2A104M
11	1	C8	CAP, 0402 220pF 5% 25V NPO	AVX 04023A221JAT2A
12	1	D1	DIODE, SUPER BARRIER RECTIFIER 100V DFN3030-8	DIODES INC./ZETEX SBR3U100LP-7
13	1	L1	IND, 10 μ H	COILCRAFT XAL5050-103ME
14	1	Q1	XSTR, FET P-CHANNEL 60V	FAIRCHILD SEMI FDMC5614P
15	5	R1, R4, R6, R8, R10	RES, 0402 0 Ω JUMPER	VISHAY CRCW04020000Z0ED
16	1	R2	RES, 0402 10k 1% 1/16W	VISHAY CRCW040210K0FKED
17	1	R3	RES, 0402 80.6k 1% 1/16W	VISHAY CRCW040280K6FKED
18	1	R5	RES, 0402 422k 1% 1/16W	VISHAY CRW0402422KFKED
19	1	R7	RES, 2010 0.025 Ω 1% 1/2W	VISHAY WSL2010R0250FEA
20	1	R9	RES, 0402 100k 5% 1/16W	VISHAY CRCW0402100KJNED
21	1	U1	IC, VOLTAGE REG. MSOP(12)-MSE	LINEAR TECH. LTC3864EMSE
Additional Demo Board Circuit Components				
1	0	CIN3	CAP, 1210 2.2 μ F 10% 100V X7R OPTION	MURATA GRM32ER72A225KA35L OPTION
2	0	C9	CAP, D CASE OPTION	OPTION
3	0	D2	DIODE, SCHOTTKY, 5A POWERDi5 OPTION	DIODES INC./ZETEXPDS5100-13 OPTION
4	0	L1 – ALTERNATE	IND, 10 μ H	TOKO B1134AS-100M
5	0	L1 – ALTERNATE	IND, 10 μ H	WURTH ELECTRONIK 744071100
6	0	Q2	XSTR, MOSFET P-CHANNEL 60V OPTION	VISHAY SILICONIX SI7465DP OPTION
7	0	R11	RES, 0402 OPTION	OPTION
Hardware				
1	4	E1, E2, E8, E9	TURRET	MILL MAX 2501-2-00-80-00-00-07-0
2	5	E3, E4, E5, E6, E7	TURRET	MILL MAX 2308-2-00-80-00-00-07-0
3	1	JP1	HEADER, 3-PIN SINGLE ROW 2mm	SAMTEC TMM-103-02-L-S
4	1	JP2	HEADER, 3-PIN DOUBLE ROW 2mm	SAMTEC TMM-103-02-L-D
5	4	MH1, MH2, MH3, MH4	STANDOFF, SNAP ON	KEYSTONE_8831
6	2	XJP1, XJP2	SHUNT, 2mm	SAMTEC 2SN-BK-G

SCHEMATIC DIAGRAM



REVISION HISTORY				
ECO	REV	DESCRIPTION	DATE	APPROVED
	3	PROD	04/17/12	D. B.
	3.3	CHANGE	04/19/16	D. B.

1630 McCarthy Blvd.,
Milpitas, CA 95035 www.linear.com
Phone: (408)432-1900
Fax: (408)434-0507
LTC CONFIDENTIAL - FOR CUSTOMER USE ONLY

LINEAR TECHNOLOGY

TITLE: SCHEMATIC
60V, LOW I_Q, STEP-DOWN CONTROLLER

SIZE IC NO. REV.
N/A LTC3864EMSE 3.3

DATE: Tuesday, April 19, 2016 SHEET 1 OF 1

APPROVALS

PCB DES.	RS/MT
APP. ENG.	DAVID B.

CUSTOMER NOTICE
LINEAR TECHNOLOGY HAS MADE A BEST EFFORT TO DESIGN A CIRCUIT THAT MEETS THE CUSTOMER'S SPECIFICATIONS. HOWEVER, IT REMAINS THE CUSTOMER'S RESPONSIBILITY TO VERIFY PROPER AND RELIABLE OPERATION IN THE ACTUAL APPLICATION. COMPONENT SUBSTITUTION AND PRINTED CIRCUIT BOARD MANUFACTURING VARIATIONS MAY AFFECT CIRCUIT PERFORMANCE OR RELIABILITY. CONTACT LINEAR TECHNOLOGY APPLICATIONS ENGINEERING FOR ASSISTANCE.

C:\DESIGN\171722A-3.1\1722A-3.3.DSN
THIS CIRCUIT IS PROPRIETARY TO LINEAR TECHNOLOGY AND SUPPLIED FOR USE WITH LINEAR TECHNOLOGY PARTS.



Information furnished by Linear Technology Corporation is believed to be accurate and reliable. However, no responsibility is assumed for its use. Linear Technology Corporation makes no representation that the interconnection of its circuits as described herein will not infringe on existing patent rights.

DEMO MANUAL DC1722A

DEMONSTRATION BOARD IMPORTANT NOTICE

Linear Technology Corporation (LTC) provides the enclosed product(s) under the following **AS IS** conditions:

This demonstration board (DEMO BOARD) kit being sold or provided by Linear Technology is intended for use for **ENGINEERING DEVELOPMENT OR EVALUATION PURPOSES ONLY** and is not provided by LTC for commercial use. As such, the DEMO BOARD herein may not be complete in terms of required design-, marketing-, and/or manufacturing-related protective considerations, including but not limited to product safety measures typically found in finished commercial goods. As a prototype, this product does not fall within the scope of the European Union directive on electromagnetic compatibility and therefore may or may not meet the technical requirements of the directive, or other regulations.

If this evaluation kit does not meet the specifications recited in the DEMO BOARD manual the kit may be returned within 30 days from the date of delivery for a full refund. **THE FOREGOING WARRANTY IS THE EXCLUSIVE WARRANTY MADE BY THE SELLER TO BUYER AND IS IN LIEU OF ALL OTHER WARRANTIES, EXPRESSED, IMPLIED, OR STATUTORY, INCLUDING ANY WARRANTY OF MERCHANTABILITY OR FITNESS FOR ANY PARTICULAR PURPOSE. EXCEPT TO THE EXTENT OF THIS INDEMNITY, NEITHER PARTY SHALL BE LIABLE TO THE OTHER FOR ANY INDIRECT, SPECIAL, INCIDENTAL, OR CONSEQUENTIAL DAMAGES.**

The user assumes all responsibility and liability for proper and safe handling of the goods. Further, the user releases LTC from all claims arising from the handling or use of the goods. Due to the open construction of the product, it is the user's responsibility to take any and all appropriate precautions with regard to electrostatic discharge. Also be aware that the products herein may not be regulatory compliant or agency certified (FCC, UL, CE, etc.).

No License is granted under any patent right or other intellectual property whatsoever. **LTC assumes no liability for applications assistance, customer product design, software performance, or infringement of patents or any other intellectual property rights of any kind.**

LTC currently services a variety of customers for products around the world, and therefore this transaction **is not exclusive**.

Please read the DEMO BOARD manual prior to handling the product. Persons handling this product must have electronics training and observe good laboratory practice standards. **Common sense is encouraged.**

This notice contains important safety information about temperatures and voltages. For further safety concerns, please contact a LTC application engineer.

Mailing Address:

Linear Technology
1630 McCarthy Blvd.
Milpitas, CA 95035

Copyright © 2004, Linear Technology Corporation



Стандарт Электрон Связь

Мы молодая и активно развивающаяся компания в области поставок электронных компонентов. Мы поставляем электронные компоненты отечественного и импортного производства напрямую от производителей и с крупнейших складов мира.

Благодаря сотрудничеству с мировыми поставщиками мы осуществляем комплексные и плановые поставки широчайшего спектра электронных компонентов.

Собственная эффективная логистика и склад в обеспечивает надежную поставку продукции в точно указанные сроки по всей России.

Мы осуществляем техническую поддержку нашим клиентам и предпродажную проверку качества продукции. На все поставляемые продукты мы предоставляем гарантию .

Осуществляем поставки продукции под контролем ВП МО РФ на предприятия военно-промышленного комплекса России , а также работаем в рамках 275 ФЗ с открытием отдельных счетов в уполномоченном банке. Система менеджмента качества компании соответствует требованиям ГОСТ ISO 9001.

Минимальные сроки поставки, гибкие цены, неограниченный ассортимент и индивидуальный подход к клиентам являются основой для выстраивания долгосрочного и эффективного сотрудничества с предприятиями радиоэлектронной промышленности, предприятиями ВПК и научно-исследовательскими институтами России.

С нами вы становитесь еще успешнее!

Наши контакты:

Телефон: +7 812 627 14 35

Электронная почта: sales@st-electron.ru

Адрес: 198099, Санкт-Петербург,
Промышленная ул, дом № 19, литера Н,
помещение 100-Н Офис 331