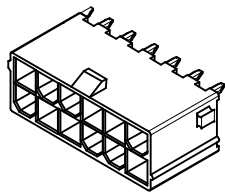


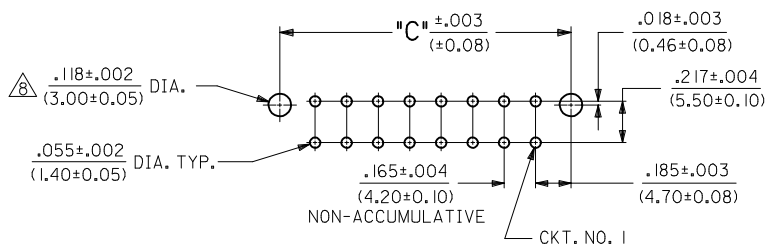
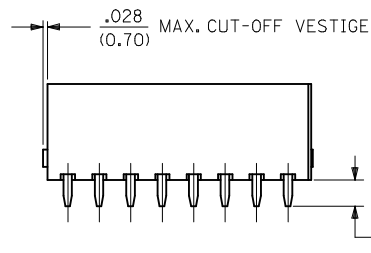
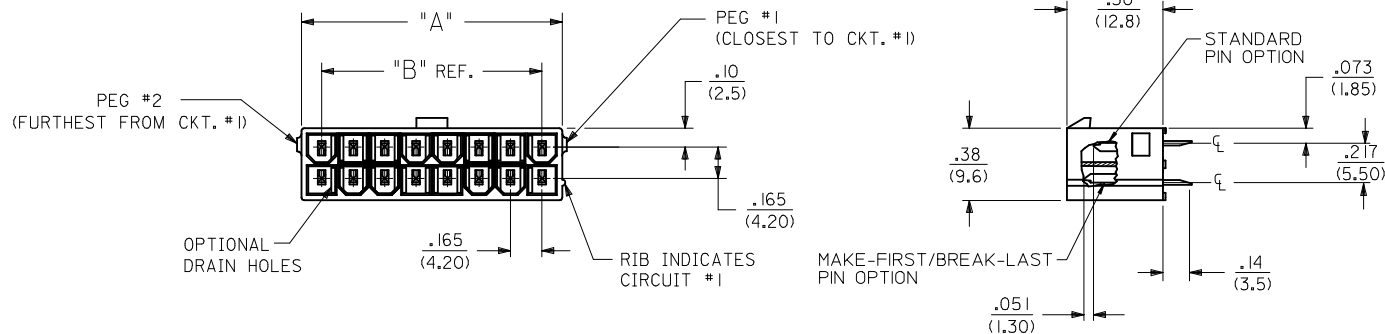
	13	12	11	10	9	8	7	6	5	4	3	2	1
	CIRCUIT SIZE	DIM. "A"	DIM. "B"	DIM. "C"									
J	2	.21 (5.4)	—	.370 (9.40)									
	4	.38 (9.6)	.17 (4.2)	.535 (13.60)									
	6	.54 (13.8)	.33 (8.4)	.701 (17.80)									
I	8	.71 (18.0)	.50 (12.6)	.866 (22.00)									
	10	.87 (22.2)	.66 (16.8)	1.031 (26.20)									
	12	1.04 (26.4)	.83 (21.0)	1.197 (30.40)									
H	14	1.20 (30.6)	.99 (25.2)	1.362 (34.60)									
	16	1.37 (34.8)	1.16 (29.4)	1.528 (38.80)									
	18	1.54 (39.0)	1.32 (33.6)	1.693 (43.00)									
G	20	1.70 (43.2)	1.49 (37.8)	1.858 (47.20)									
	22	1.87 (47.4)	1.65 (42.0)	2.024 (51.40)									
	24	2.03 (51.6)	1.82 (46.2)	2.189 (55.60)									



12 CKT SHOWN

NOTES:

- MATERIALS:  
HOUSING MATERIAL AND OPTIONS: SEE CHART  
TERMINALS: BRASS
- TERMINAL PLATING:  
A = .000035/(0.00089) MIN. BRIGHT TIN OVER  
.000020/(0.00051) MIN. COPPER OVERALL  
B = .000030/(0.00076) MIN. SELECT GOLD AND  
.000100/(0.00254) MIN. MATTE TIN OVER  
.000050/(0.00127) MIN. NICKEL OVERALL  
C = .000100/(0.00254) MIN. BRIGHT TIN OVER  
.000050/(0.00127) MIN. NICKEL OVERALL
- PRODUCT SPECIFICATION: PS-5556-001
- PACKAGING: SEE CHART.
- PART MATES WITH MINI-FIT JR. RECEPTACLE #5557.
- PARTS ARE NOT DESIGNED FOR CURRENT SHARING.
- CONNECTOR ASSEMBLIES ARE NOT DESIGNED TO BE MATED OR UNMATED WHILE CIRCUITS ARE LIVE.
- LOCATION OF .118±.002/(3.00±0.05) DIAMETER HOLES ON P.C. BOARD IS FOR OPTIONAL PEGS.
- PART CONFORMS TO CLASS "B" REQUIREMENTS OF COSMETIC SPECIFICATION PS-45499-002 EXCEPT IN AREA OF PEG CUT-OFF.
- 4 CIRCUIT PARTS WILL HAVE PEG DESIGN A. ALL OTHER CIRCUIT SIZES WILL HAVE PEG DESIGN B.

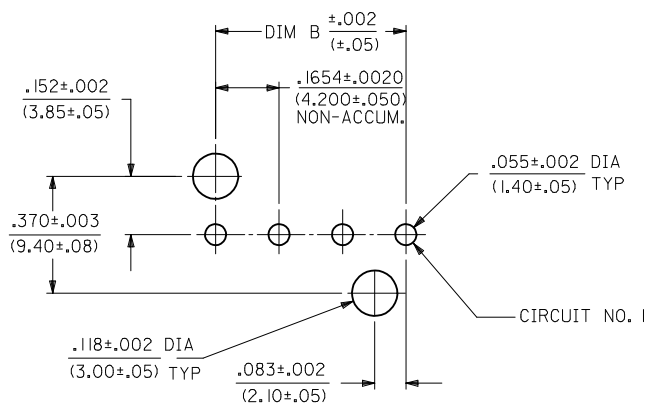
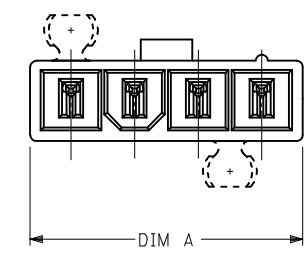
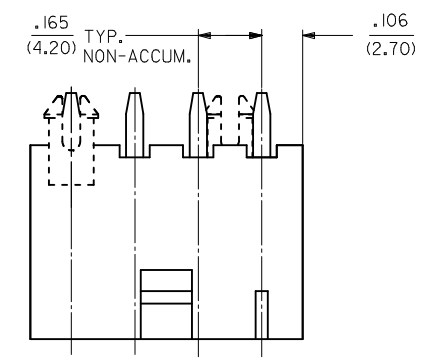
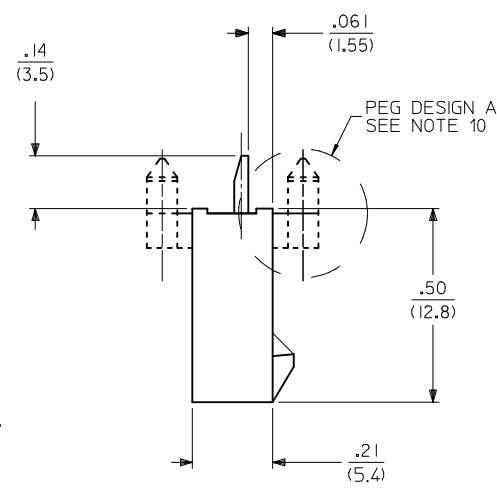
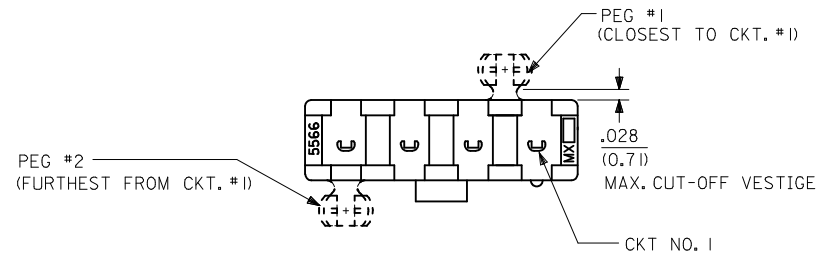
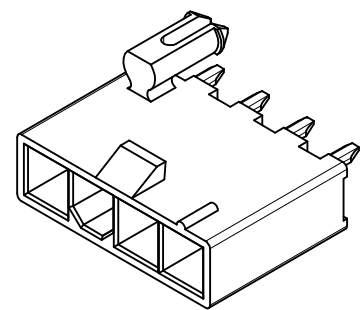


RECOMMENDED HOLE LAYOUT FOR .070/(1.78) MAX. THICK P.C. BOARD VIEWED FROM COMPONENT SIDE (SEE NOTE 8)

SEE SHEET 2 FOR SINGLE ROW PRODUCT

ADD -0025 EC NO: UCP2013-1389 DRW:BBEE 2012/10/08 CHKD:JBELL 2012/10/08 APPR:FSMITH 2012/10/12	QUALITY SYMBOLS ▽=0 ▽=0 ▽=0	GENERAL TOLERANCES (UNLESS SPECIFIED)		DIMENSION STYLE IN/MM		SCALE 2:1	DESIGN UNITS METRIC	THIRD ANGLE PROJECTION	
		mm	INCH	DRAWN BY AFG	DATE 1995/07/19	TITLE 2-24 CKT VERT HDR ASSY W/PEGS REMOVED OPTION W/WO DRAIN HOLE MINI-FIT			
REV D14	DESCRIPTION	4 PLACES ± --- ± ---	3 PLACES ± --- ± .015	CHECKED BY R/JF	DATE 1995/07/19	MOLEX INCORPORATED			
		2 PLACES ± 0.38 ± .020	1 PLACE ± 0.50 ± ---	APPROVED BY FSMITH	DATE 2010/03/08				
ANGULAR ±1/2°		MATERIAL NO.		DOCUMENT NO.		SHEET NO.			
DRAFT WHERE APPLICABLE MUST REMAIN WITHIN DIMENSIONS		SEE SHEET 3		SDA-43588-****		1 OF 4			
THIS DRAWING CONTAINS INFORMATION THAT IS PROPRIETARY TO MOLEX INCORPORATED AND SHOULD NOT BE USED WITHOUT WRITTEN PERMISSION									

CKT SIZE	DIM A	DIM B
4	.709 (18.00)	.496 (12.60)
5	.874 (22.20)	.661 (16.80)
6	1.039 (26.40)	.827 (21.00)
7	1.205 (30.60)	.992 (25.20)
8	1.370 (34.80)	1.157 (29.40)
9	1.535 (39.00)	1.323 (33.60)
10	1.701 (43.20)	1.488 (37.80)
11	1.866 (47.40)	1.654 (42.00)
12	2.031 (51.60)	1.819 (46.20)



RECOMMENDED HOLE LAYOUT FOR  
.070/(1.78) MAX. THICK P. C. BOARD  
VIEWED FROM COMPONENT SIDE  
(SEE NOTE 8)

SEE SHEET 1 FOR DUAL ROW PRODUCT

<b>SEE SHEET 1</b> EC NO: UCP2013-1389 DRWN:BBEE 2012/10/08 CHKD:JBELL 2012/10/08 APPR:FSMITH 2012/10/12	QUALITY SYMBOLS 	GENERAL TOLERANCES (UNLESS SPECIFIED)		DIMENSION STYLE <b>IN/MM</b>	SCALE <b>2:1</b>	DESIGN UNITS <b>METRIC</b>	THIRD ANGLE PROJECTION
		4 PLACES ± --- ± --- 3 PLACES ± --- ± .015 2 PLACES ± 0.38 ± .020 1 PLACE ± 0.50 ± ---	DRAWN BY AFG	DATE 1995/07/19	TITLE <b>2-24 CKT VERT HDR ASSY W/PEGS REMOVED OPTION W/NO DRAIN HOLE MINI-FIT</b>		
		ANGULAR ±1/2°	CHECKED BY RJF	DATE 1995/07/19	<b>MOLEX INCORPORATED</b>		
		DRAFT WHERE APPLICABLE MUST REMAIN WITHIN DIMENSIONS	APPROVED BY FSMITH	DATE 2010/03/08	MATERIAL NO. <b>SEE SHEET 3</b>	DOCUMENT NO. <b>SDA-43588-****</b>	SHEET NO. <b>2 OF 4</b>

THIS DRAWING CONTAINS INFORMATION THAT IS PROPRIETARY TO MOLEX INCORPORATED AND SHOULD NOT BE USED WITHOUT WRITTEN PERMISSION



	13	12	11	10	9	8	7	6	5	4	3	2	1																			
ITEM NO.	CKTS	MATERIAL	HOUSING TYPE	DRAIN HOLES	PEG 1	PEG 2	PLATING PER NOTE 2	TERMINAL VERSION REQUIRED AT EACH CIRCUIT LOCATION: V = VOID																								PACKAGING
								1	2	3	4	5	6	7	8	9	10	11	12	13	14	15	16	17	18	19	20	21	22	23	24	
43588-0024	06	94V-0	DUAL ROW	NO	NONE	NONE	C	4	V	4	4	V	4	-	-	-	-	-	-	-	-	-	-	-	-	-	-	-	-	-	PK-5566-001	
43588-0025	06	94V-0	DUAL ROW	NO	NONE	NONE	B	3	V	3	3	V	3	-	-	-	-	-	-	-	-	-	-	-	-	-	-	-	-	PK-5566-001		

TERMINAL CODES

TERMINAL TYPE	PLATING SEE NOTE 2	MATERIAL
1 = STANDARD	A	BRASS
2 = MF/BL	A	BRASS
3 = STANDARD	B	BRASS
4 = STANDARD	C	BRASS
5 = MF/BL	C	BRASS

<p><b>SEE SHEET 1</b>            EC NO: UCP2013-1389            DRW:BBEE 2012/10/08            CHKD:JBELL 2012/10/08            APPR:FSMITH 2012/10/12</p>	<p>DESCRIPTION</p>	<p>QUALITY SYMBOLS</p> <p>▽=0 ▽=0 ▽=0</p>	<p>GENERAL TOLERANCES (UNLESS SPECIFIED)</p> <table border="1"> <thead> <tr> <th></th> <th>mm</th> <th>INCH</th> </tr> </thead> <tbody> <tr> <td>4 PLACES</td> <td>± .---</td> <td>± .---</td> </tr> <tr> <td>3 PLACES</td> <td>± .---</td> <td>± .015</td> </tr> <tr> <td>2 PLACES</td> <td>± 0.38</td> <td>± .020</td> </tr> <tr> <td>1 PLACE</td> <td>± 0.50</td> <td>± .---</td> </tr> </tbody> </table>			mm	INCH	4 PLACES	± .---	± .---	3 PLACES	± .---	± .015	2 PLACES	± 0.38	± .020	1 PLACE	± 0.50	± .---	<p>DIMENSION STYLE IN/MM</p> <p>DRAWN BY DATE AFG 1995/07/19</p> <p>CHECKED BY DATE RJF 1995/07/19</p> <p>APPROVED BY DATE FSMITH 2010/03/08</p>		<p>SCALE 1:1</p> <p>DESIGN UNITS METRIC</p>	<p>THIRD ANGLE PROJECTION</p>	<p>TITLE 2-24 CKT VERT HDR ASSY W/PEGS REMOVED OPTION W/NO DRAIN HOLE MINI-FIT</p> <p><b>molex MOLEX INCORPORATED</b></p>				
			mm	INCH																								
4 PLACES	± .---	± .---																										
3 PLACES	± .---	± .015																										
2 PLACES	± 0.38	± .020																										
1 PLACE	± 0.50	± .---																										
<p>DRAFT WHERE APPLICABLE MUST REMAIN WITHIN DIMENSIONS</p>		<p>MATERIAL NO. SEE CHART</p>		<p>DOCUMENT NO. SDA-43588-****</p>	<p>SHEET NO. 4 OF 4</p>																							
<p>THIS DRAWING CONTAINS INFORMATION THAT IS PROPRIETARY TO MOLEX INCORPORATED AND SHOULD NOT BE USED WITHOUT WRITTEN PERMISSION</p>																												



## Стандарт Электрон Связь

Мы молодая и активно развивающаяся компания в области поставок электронных компонентов. Мы поставляем электронные компоненты отечественного и импортного производства напрямую от производителей и с крупнейших складов мира.

Благодаря сотрудничеству с мировыми поставщиками мы осуществляем комплексные и плановые поставки широчайшего спектра электронных компонентов.

Собственная эффективная логистика и склад в обеспечивает надежную поставку продукции в точно указанные сроки по всей России.

Мы осуществляем техническую поддержку нашим клиентам и предпродажную проверку качества продукции. На все поставляемые продукты мы предоставляем гарантию .

Осуществляем поставки продукции под контролем ВП МО РФ на предприятия военно-промышленного комплекса России , а также работаем в рамках 275 ФЗ с открытием отдельных счетов в уполномоченном банке. Система менеджмента качества компании соответствует требованиям ГОСТ ISO 9001.

Минимальные сроки поставки, гибкие цены, неограниченный ассортимент и индивидуальный подход к клиентам являются основой для выстраивания долгосрочного и эффективного сотрудничества с предприятиями радиоэлектронной промышленности, предприятиями ВПК и научно-исследовательскими институтами России.

С нами вы становитесь еще успешнее!

### Наши контакты:

**Телефон:** +7 812 627 14 35

**Электронная почта:** [sales@st-electron.ru](mailto:sales@st-electron.ru)

**Адрес:** 198099, Санкт-Петербург,  
Промышленная ул, дом № 19, литера Н,  
помещение 100-Н Офис 331