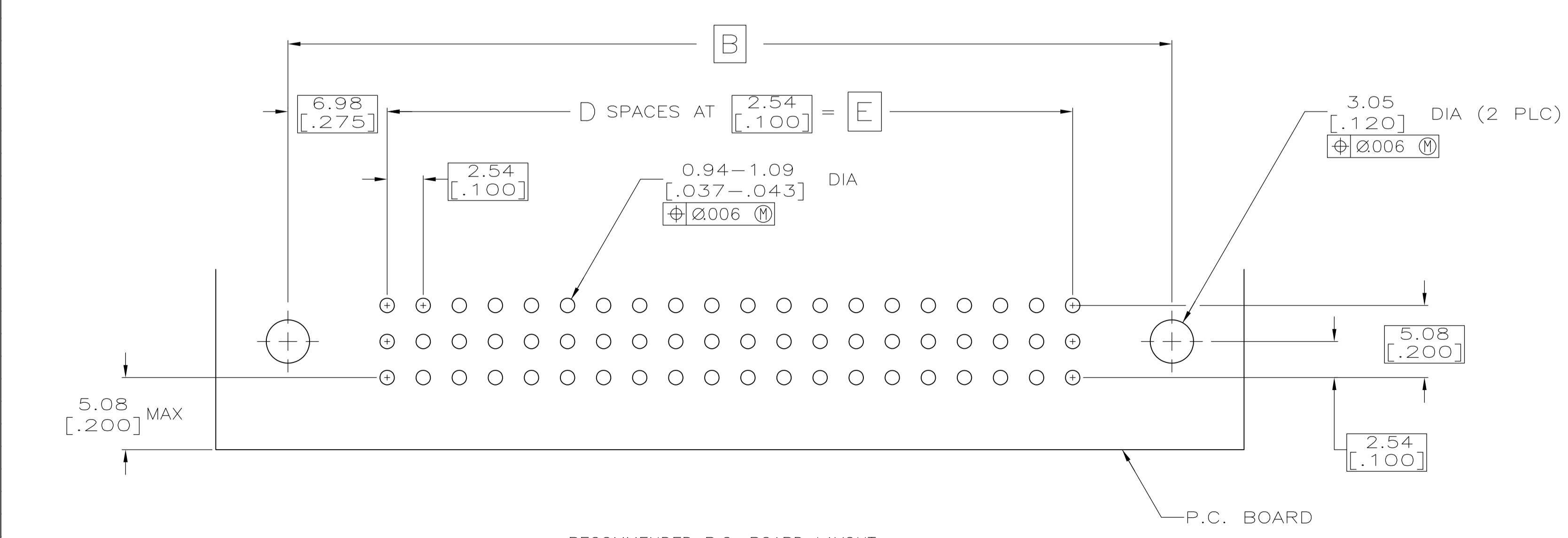
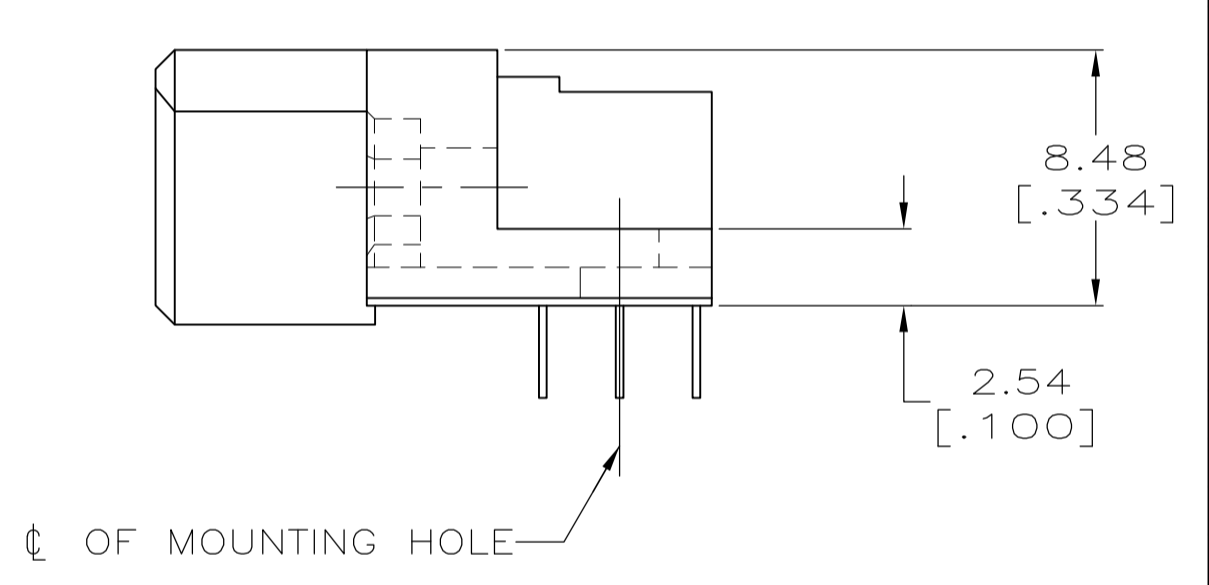
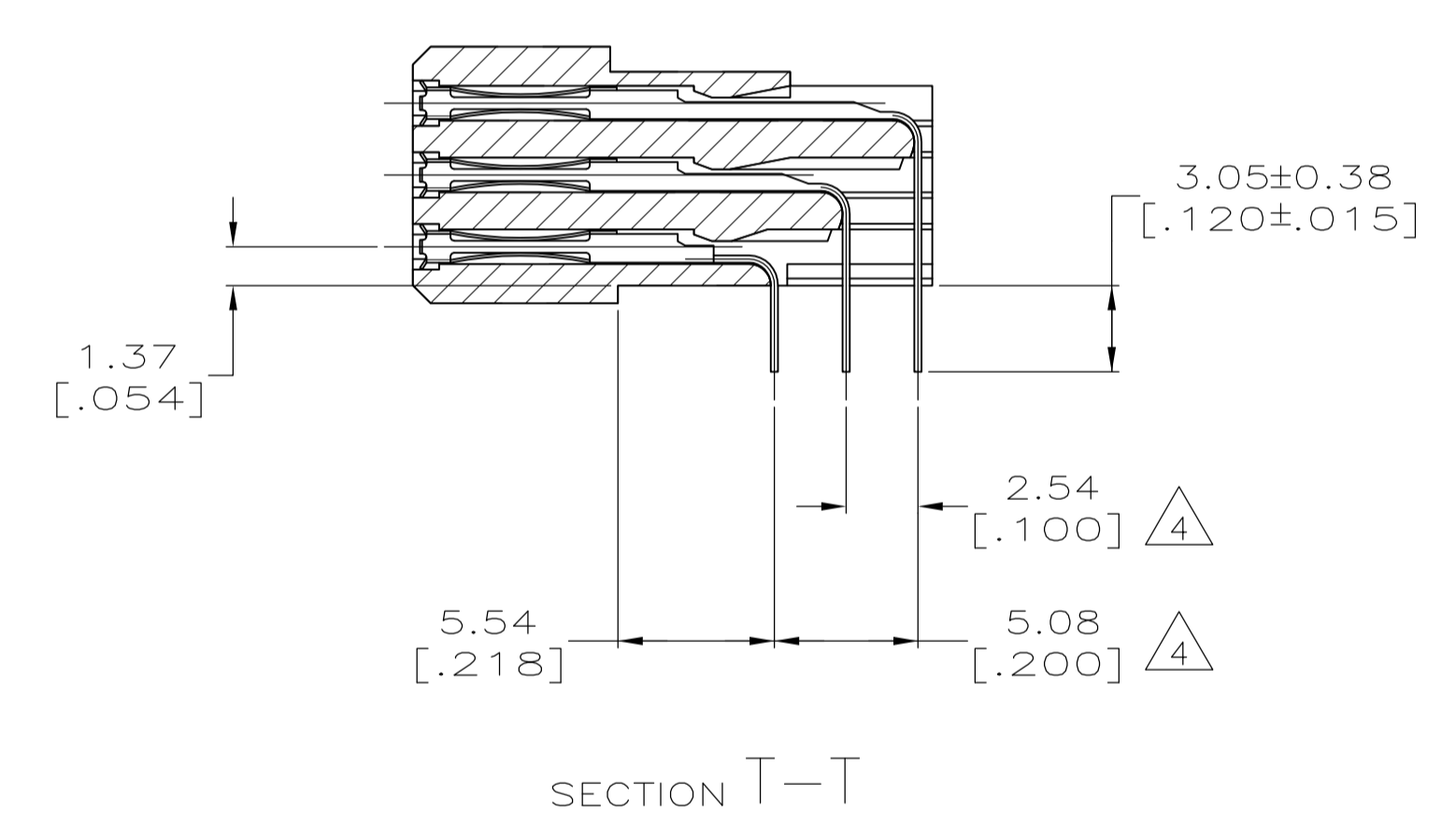
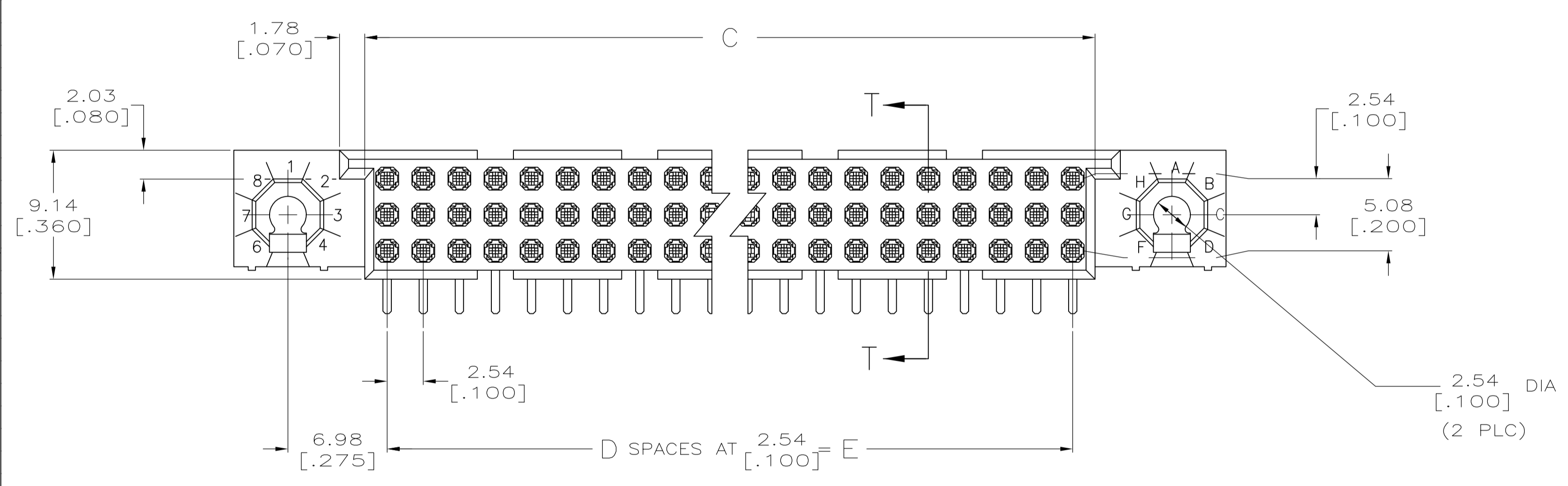
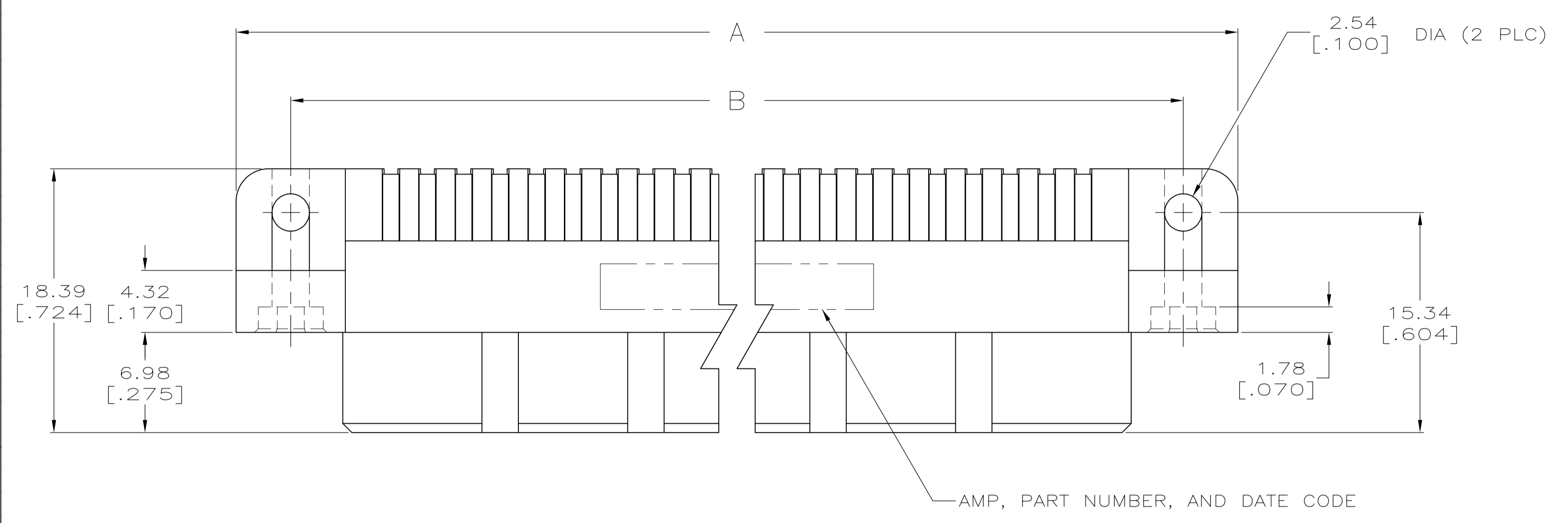


| REVISIONS | | | | | |
|-----------|-----|---------------------------|-----------|-----|------|
| P | LTR | DESCRIPTION | DATE | DMN | APVD |
| P | | REVISED PER ECO-16-009924 | 11JUL2016 | DS | SY |



RECOMMENDED P.C. BOARD LAYOUT

| | | | | | | | | | | | | | | | | | |
|--|---------------|--|-----|--|-----|--------|-----|-------------------|---------------|-------|-----|--------|-----|------|--|--|--|
| THIS DRAWING IS A CONTROLLED DOCUMENT. | | DIN R.K. SEIFRIED 06/18/90 | | STE TE Connectivity | | | | | | | | | | | | | |
| DIMENSIONS: mm [INCHES] | | TOLERANCES UNLESS OTHERWISE SPECIFIED: | | APVD G. SKIPPER 10/6/92 | | | | | | | | | | | | | |
| <table border="1"> <tr><td>0 PLC</td><td>± -</td></tr> <tr><td>1 PLC</td><td>± -</td></tr> <tr><td>2 PLC</td><td>± -</td></tr> <tr><td>3 PLC</td><td>± 0.13 [.005]</td></tr> <tr><td>4 PLC</td><td>± -</td></tr> <tr><td>ANGLES</td><td>± -</td></tr> </table> | | 0 PLC | ± - | 1 PLC | ± - | 2 PLC | ± - | 3 PLC | ± 0.13 [.005] | 4 PLC | ± - | ANGLES | ± - | NAME | | HDI, 3 ROW, RECEPTACLE ASSEMBLY, 3.05 [.120] LONG SOLDER TAILS | |
| 0 PLC | ± - | | | | | | | | | | | | | | | | |
| 1 PLC | ± - | | | | | | | | | | | | | | | | |
| 2 PLC | ± - | | | | | | | | | | | | | | | | |
| 3 PLC | ± 0.13 [.005] | | | | | | | | | | | | | | | | |
| 4 PLC | ± - | | | | | | | | | | | | | | | | |
| ANGLES | ± - | | | | | | | | | | | | | | | | |
| MATERIAL | | FINISH | | SIZE CAGE CODE DRAWING NO. RESTRICTED TO | | | | | | | | | | | | | |
| <table border="1"> <tr><td>1</td><td>2</td></tr> <tr><td>3</td><td>8</td></tr> </table> | | 1 | 2 | 3 | 8 | WEIGHT | | A1 00779 C=533268 | | | | | | | | | |
| 1 | 2 | | | | | | | | | | | | | | | | |
| 3 | 8 | | | | | | | | | | | | | | | | |
| CUSTOMER DRAWING | | SCALE 4:1 | | SHEET 1 OF 2 REV P | | | | | | | | | | | | | |

| REVISIONS | | | | |
|-----------|------|-------------|------|------|
| # | DATE | DESCRIPTION | DATE | APPD |
| - | - | SEE SHEET 1 | - | - |

- 1 HOUSING MATERIAL: THERMOPLASTIC, COLOR-NATURAL.
- 2 CONTACT MATERIAL: COPPER ALLOY.
- 3 FINISH:
MATING AREA: MEETS THE PERFORMANCE REQUIREMENTS OF PRODUCT SPECIFICATION 108-9063; BASED ON TELCORDIA DR-1217-CORE APPLICATIONS IN UNCONTROLLED ENVIRONMENTS.
SOLDER TAILS AREA: TIN-LEAD PLATED.
- 4 SOLDER TAILS MUST FIT HOLE PATTERN AS SHOWN ON THE RECOMMENDED P.C. BOARD LAYOUT.
- 5 DIMENSIONS IN BRACKETS ARE IN INCHES.
- 6 HOUSINGS WITH CENTER MOUNTING IS RECOMMENDED FOR ASSEMBLIES HAVING 75 CONTACTS PER ROW OR MORE.
- 7 PART NUMBER IS OBSOLETE.
- 8 FINISH:
CONTACT FINISH: .00127-.00254 [.000050-.000100] NICKEL
UNDERPLATE ALL OVER; .000762 [.000030] GOLD PLATE IN CONTACT AREA, TIN-LEAD PLATED POSTS.

| | | | | | | | |
|-----|-------------------|----|--------------------|--------------------|--------------------|------|-------------|
| 8 | 149.86 [5.900] | 59 | 153.01 [6.024] | 163.83 [6.450] | 171.45 [6.750] | 180 | 3-533268-9 |
| 8 | 124.46 [4.900] | 49 | 127.61 [5.024] | 138.43 [5.450] | 146.05 [5.750] | 150 | 3-533268-7 |
| 8 | 99.06 [3.900] | 39 | 102.21 [4.024] | 113.03 [4.450] | 120.65 [4.750] | 120 | 3-533268-5 |
| 7 | 22.86 [.900] | -9 | 26.01 [1.024] | 36.83 [1.450] | 44.45 [1.750] | -30 | 2-533268-0 |
| 7 | 81.28 [3.200] | 32 | 84.43 [3.324] | 95.25 [3.750] | 102.87 [4.050] | 99 | 1-533268-9 |
| 7 | 144.78 [5.700] | 57 | 147.93 [5.824] | 158.75 [6.250] | 166.37 [6.550] | 174 | 1-533268-8 |
| 6 7 | 251.46 [9.900] | 99 | 254.61 [10.024] | 265.43 [10.450] | 273.05 [10.750] | 300 | 1-533268-7 |
| 6 7 | 238.76 [9.400] | 94 | 241.91 [9.524] | 252.73 [9.950] | 260.35 [10.250] | 285 | 1-533268-6 |
| 6 | 226.06 [8.900] | 89 | 229.21 [9.024] | 240.03 [9.450] | 247.65 [9.750] | 270 | 1-533268-5 |
| 6 7 | 213.36 [8.400] | 84 | 216.51 [8.524] | 227.33 [8.950] | 234.95 [9.250] | 255 | 1-533268-4 |
| 6 | 200.66 [7.900] | 79 | 203.81 [8.024] | 214.63 [8.450] | 222.25 [8.750] | 240 | 1-533268-3 |
| 7 | 187.96 [7.400] | 74 | 191.11 [7.524] | 201.93 [7.950] | 209.55 [8.250] | 225 | 1-533268-2 |
| 7 | 175.26 [6.900] | 69 | 178.41 [7.024] | 189.23 [7.450] | 196.85 [7.750] | 210 | 1-533268-1 |
| 7 | 162.56 [6.400] | 64 | 165.71 [6.524] | 176.53 [6.950] | 184.15 [7.250] | 195 | 1-533268-0 |
| 7 | 149.86 [5.900] | 59 | 153.01 [6.024] | 163.83 [6.450] | 171.45 [6.750] | 180 | 533268-9 |
| | 137.16 [5.400] | 54 | 140.31 [5.524] | 151.13 [5.950] | 158.75 [6.250] | 165 | 533268-8 |
| | 124.46 [4.900] | 49 | 127.61 [5.024] | 138.43 [5.450] | 146.05 [5.750] | 150 | 533268-7 |
| | 111.76 [4.400] | 44 | 114.91 [4.524] | 125.73 [4.950] | 133.35 [5.250] | 135 | 533268-6 |
| | 99.06 [3.900] | 39 | 102.21 [4.024] | 113.03 [4.450] | 120.65 [4.750] | 120 | 533268-5 |
| | 86.36 [3.400] | 34 | 89.51 [3.524] | 100.33 [3.950] | 107.95 [4.250] | 105 | 533268-4 |
| | 78.74 [3.100] | 31 | 81.89 [3.224] | 92.71 [3.650] | 100.33 [3.950] | 96 | 533268-3 |
| 7 | 73.66 [2.900] | 29 | 76.81 [3.024] | 87.63 [3.450] | 95.25 [3.750] | 90 | 533268-2 |
| 8 | 60.96 [2.400] | 24 | 64.11 [2.524] | 74.93 [2.950] | 82.55 [3.250] | 75 | 533268-1 |
| | E | D | C | B | A | POSN | PART NUMBER |

| | | | | | | | | | | | | | | | | | | | | | | | |
|--|---|--|-------------------------------|---|--------------------|---|---|-------|---|---|-------|---|-------------|-------|---|---|--------|---|---|--------------|---------------|--|--|
| THIS DRAWING IS A CONTROLLED DOCUMENT. | | OWN R. K. SEIFRIED 10/6/92 | DATE 06/18/90 | TE Connectivity | | | | | | | | | | | | | | | | | | | |
| DIMENSIONS: mm [INCHES] | | TOLERANCES UNLESS OTHERWISE SPECIFIED: | APPD G. SKIPPER 10/6/92 | NAME HDI, 3 ROW, RECEPTACLE ASSEMBLY, 3.05 [.120] LONG SOLDER TAILS | | | | | | | | | | | | | | | | | | | |
| <table border="1"> <tr> <td>0 PLC</td> <td>±</td> <td>-</td> </tr> <tr> <td>1 PLC</td> <td>±</td> <td>-</td> </tr> <tr> <td>2 PLC</td> <td>±</td> <td>-</td> </tr> <tr> <td>3 PLC</td> <td>±</td> <td>0.13 [.005]</td> </tr> <tr> <td>4 PLC</td> <td>±</td> <td>-</td> </tr> <tr> <td>ANGLES</td> <td>±</td> <td>-</td> </tr> </table> | | 0 PLC | ± | - | 1 PLC | ± | - | 2 PLC | ± | - | 3 PLC | ± | 0.13 [.005] | 4 PLC | ± | - | ANGLES | ± | - | PRODUCT SPEC | RESTRICTED TO | | |
| 0 PLC | ± | - | | | | | | | | | | | | | | | | | | | | | |
| 1 PLC | ± | - | | | | | | | | | | | | | | | | | | | | | |
| 2 PLC | ± | - | | | | | | | | | | | | | | | | | | | | | |
| 3 PLC | ± | 0.13 [.005] | | | | | | | | | | | | | | | | | | | | | |
| 4 PLC | ± | - | | | | | | | | | | | | | | | | | | | | | |
| ANGLES | ± | - | | | | | | | | | | | | | | | | | | | | | |
| MATERIAL | | FINISH | APPLICATION SPEC | SIZE A1 | CAGE CODE 00779 | | | | | | | | | | | | | | | | | | |
| 1 2 | | 3 8 | WEIGHT 0 | DRAWING NO 533268 | REV P | | | | | | | | | | | | | | | | | | |
| CUSTOMER DRAWING | | | SCALE 4:1 | SHEET 2 OF 2 | REV P | | | | | | | | | | | | | | | | | | |



Стандарт Электрон Связь

Мы молодая и активно развивающаяся компания в области поставок электронных компонентов. Мы поставляем электронные компоненты отечественного и импортного производства напрямую от производителей и с крупнейших складов мира.

Благодаря сотрудничеству с мировыми поставщиками мы осуществляем комплексные и плановые поставки широчайшего спектра электронных компонентов.

Собственная эффективная логистика и склад в обеспечивает надежную поставку продукции в точно указанные сроки по всей России.

Мы осуществляем техническую поддержку нашим клиентам и предпродажную проверку качества продукции. На все поставляемые продукты мы предоставляем гарантию .

Осуществляем поставки продукции под контролем ВП МО РФ на предприятия военно-промышленного комплекса России , а также работаем в рамках 275 ФЗ с открытием отдельных счетов в уполномоченном банке. Система менеджмента качества компании соответствует требованиям ГОСТ ISO 9001.

Минимальные сроки поставки, гибкие цены, неограниченный ассортимент и индивидуальный подход к клиентам являются основой для выстраивания долгосрочного и эффективного сотрудничества с предприятиями радиоэлектронной промышленности, предприятиями ВПК и научно-исследовательскими институтами России.

С нами вы становитесь еще успешнее!

Наши контакты:

Телефон: +7 812 627 14 35

Электронная почта: sales@st-electron.ru

Адрес: 198099, Санкт-Петербург,
Промышленная ул, дом № 19, литера Н,
помещение 100-Н Офис 331