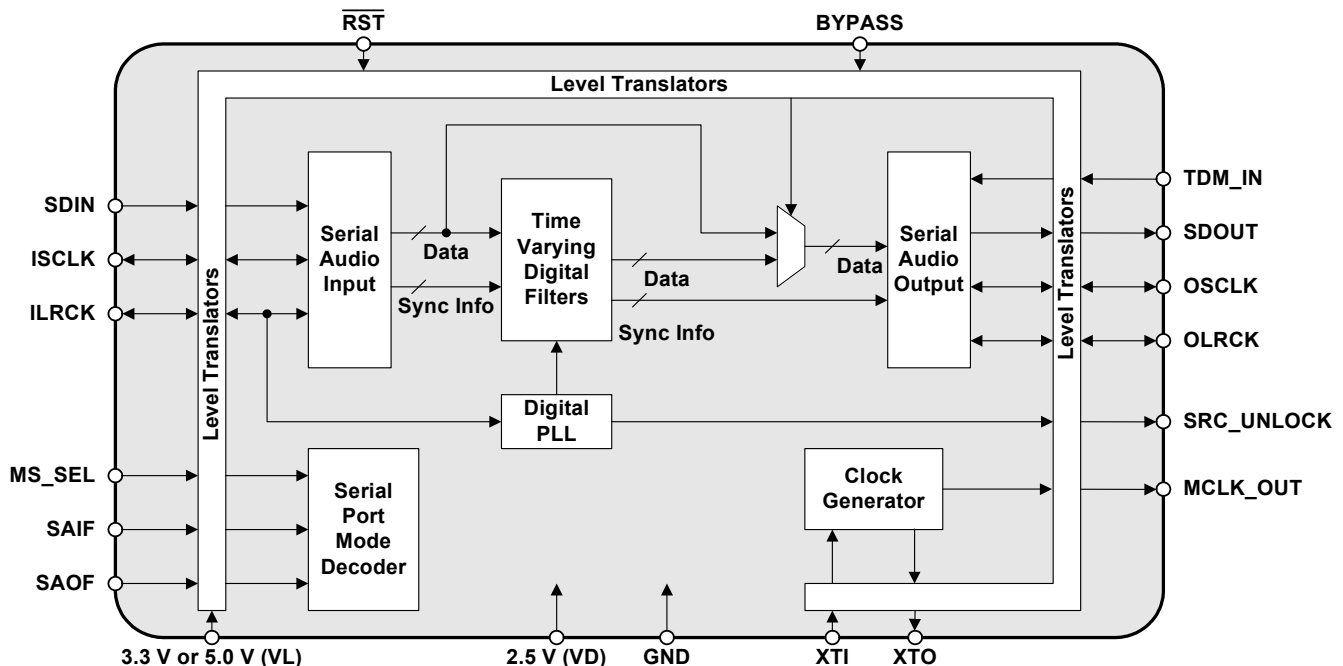


## 32-Bit, 192-kHz Asynchronous Sample Rate Converter

### Features

- ◆ 175-dB Dynamic Range
- ◆ -140-dB THD+N
- ◆ No Programming Required
- ◆ No External Master Clock Required
- ◆ Supports Sample Rates up to 211 kHz
- ◆ Input/Output Sample Rate Ratios of 7.5:1 to 1:8
- ◆ Master Clock Support for 128 x Fs, 256 x Fs, 384 x Fs, and 512 x Fs (Master Mode)
- ◆ 16-, 20-, 24-, or 32-bit Data I/O
- ◆ 32-bit Internal Signal Processing
- ◆ Dither Automatically Applied and Scaled to Output Resolution
- ◆ Flexible 3-wire Serial Digital Audio Input and Output Ports
- ◆ Master and Slave Modes for Both Input and Output
- ◆ Bypass Mode
- ◆ Time Division Multiplexing (TDM) Mode
- ◆ Attenuates Clock Jitter
- ◆ Multiple Device Outputs are Phase Matched
- ◆ Linear Phase FIR Filter
- ◆ Automatic Soft Mute/Unmute
- ◆ +2.5-V Digital Supply (VD)
- ◆ +3.3-V or 5.0-V Digital Interface (VL)
- ◆ Space-saving 20-pin TSSOP and QFN Packages

The CS8421 supports sample rates up to 211 kHz and is available in 20-pin TSSOP and QFN packages in both Commercial (-10° to +70°C) and Automotive (-40° to +85°C and -40° to +105°C) grades. The CDB8421 Customer Demonstration board is also available for device evaluation and implementation suggestions. See [“Ordering Information” on page 35](#) for complete details.



## General Description

The CS8421 is a 32-bit, high-performance, monolithic CMOS stereo asynchronous sample-rate converter.

Digital audio inputs and outputs can be 32, 24, 20, or 16 bits. Input and output data can be completely asynchronous, synchronous to an external data clock, or the part can operate without any external clock by using an integrated oscillator.

Audio data is input and output through configurable 3-wire input/output ports. The CS8421 does not require any software control via a control port.

Target applications include digital recording systems (DVD-R/RW, CD-R/RW, PVR, DAT, MD, and VTR), digital mixing consoles, high-quality D/A, effects processors, computer audio systems, and automotive audio systems.

The CS8421 is also suitable for use as an asynchronous decimation or interpolation filter. See Cirrus Logic Application Note AN270, *“Audio A/D Conversion with an Asynchronous Decimation Filter”*, available at [www.cirrus.com](http://www.cirrus.com) for more details.

---

**TABLE OF CONTENTS**

|  |           |
|--|-----------|
| <b>1. PIN DESCRIPTIONS .....</b>   | <b>5</b>  |
| 1.1 TSSOP Pin Descriptions .....   | 5         |
| 1.2 QFN Pin Descriptions .....   | 7         |
| <b>2. CHARACTERISTICS AND SPECIFICATIONS .....</b>                       | <b>9</b>  |
| SPECIFIED OPERATING CONDITIONS .....                                     | 9         |
| ABSOLUTE MAXIMUM RATINGS .....   | 9         |
| PERFORMANCE SPECIFICATIONS .....   | 10        |
| DIGITAL FILTER CHARACTERISTICS .....                                     | 11        |
| DC ELECTRICAL CHARACTERISTICS .....                                      | 11        |
| DIGITAL INPUT CHARACTERISTICS .....                                      | 12        |
| DIGITAL INTERFACE SPECIFICATIONS .....                                   | 12        |
| SWITCHING SPECIFICATIONS .....   | 12        |
| <b>3. TYPICAL CONNECTION DIAGRAMS .....</b>                              | <b>14</b> |
| <b>4. APPLICATIONS .....</b>   | <b>16</b> |
| 4.1 Three-wire Serial Input/Output Audio Port .....                      | 16        |
| 4.2 Mode Selection .....   | 17        |
| 4.3 Sample Rate Converter (SRC) .....                                    | 19        |
| 4.3.1 Data Resolution and Dither .....                                   | 19        |
| 4.3.2 SRC Locking and Varispeed .....                                    | 19        |
| 4.3.3 Bypass Mode .....  | 19        |
| 4.3.4 Muting .....   | 20        |
| 4.3.5 Group Delay and Phase Matching Between Multiple CS8421 Parts ..... | 20        |
| 4.3.6 Master Clock .....   | 20        |
| 4.3.7 Clocking .....   | 21        |
| 4.4 Time Division Multiplexing (TDM) Mode .....                          | 21        |
| 4.5 Reset, Power-Down, and Start-Up .....                                | 22        |
| 4.6 Power Supply, Grounding, and PCB Layout .....                        | 23        |
| <b>5. PERFORMANCE PLOTS .....</b>  | <b>24</b> |
| <b>6. PACKAGE DIMENSIONS .....</b>                                       | <b>33</b> |
| TSSOP THERMAL CHARACTERISTICS .....                                      | 33        |
| QFN THERMAL CHARACTERISTICS .....  | 34        |
| <b>7. ORDERING INFORMATION .....</b>                                     | <b>35</b> |
| <b>8. REVISION HISTORY .....</b>   | <b>35</b> |

**LIST OF FIGURES**

|  |    |
|--|----|
| Figure 1. Non-TDM Slave Mode Timing.....   | 13 |
| Figure 2. TDM Slave Mode Timing .....  | 13 |
| Figure 3. Non-TDM Master Mode Timing.....  | 13 |
| Figure 4. TDM Master Mode Timing .....   | 13 |
| Figure 5. Typical Connection Diagram, No External Master Clock.....                          | 14 |
| Figure 6. Typical Connection Diagram, Master and Slave Modes.....                            | 15 |
| Figure 7. Serial Audio Interface Format - I <sup>2</sup> S .....                             | 17 |
| Figure 8. Serial Audio Interface Format - Left-Justified.....                                | 17 |
| Figure 9. Serial Audio Interface Format - Right-Justified .....                              | 17 |
| Figure 10. Typical Connection Diagram for Crystal Circuit .....                              | 21 |
| Figure 11. TDM Slave Mode Timing Diagram.....  | 21 |
| Figure 12. TDM Master Mode Timing Diagram.....   | 22 |
| Figure 13. TDM Mode Configuration (All CS8421 Outputs are Slave).....                        | 22 |
| Figure 14. TDM Mode Configuration (First CS8421 Output is Master, All Others are Slave)..... | 22 |
| Figure 15. Wideband FFT Plot (16k Points) 0 dBFS 1 kHz Tone, 48 kHz:48 kHz .....             | 24 |
| Figure 16. Wideband FFT Plot (16k Points) 0 dBFS 1 kHz Tone, 44.1 kHz:192 kHz .....          | 24 |
| Figure 17. Wideband FFT Plot (16k Points) 0 dBFS 1 kHz Tone, 44.1 kHz:48 kHz .....           | 24 |

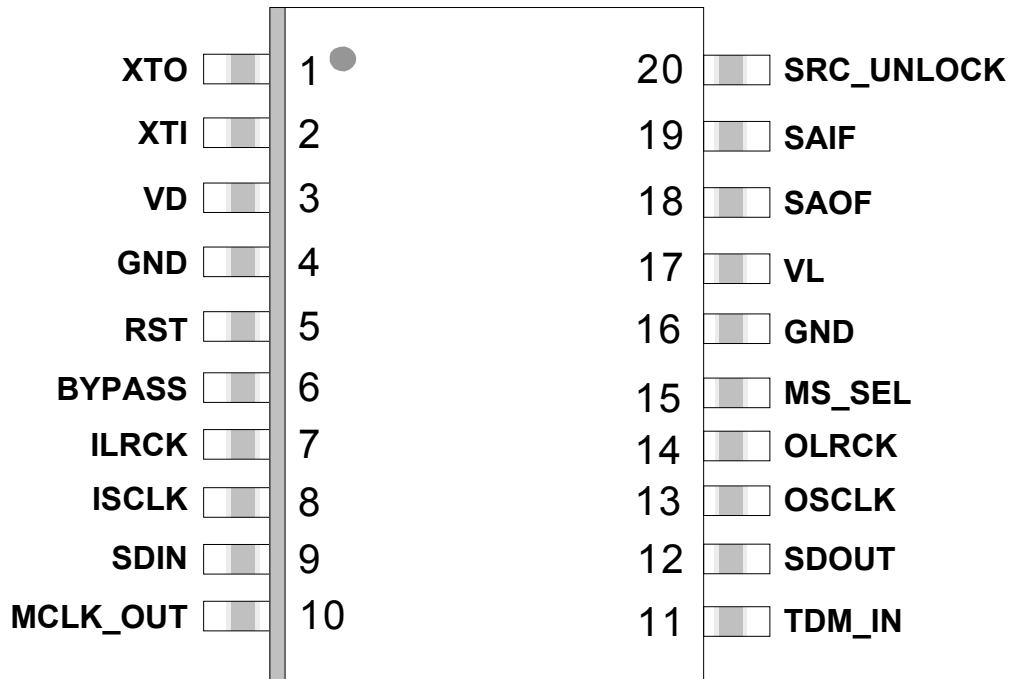
|  |    |
|--|----|
| Figure 18. Wideband FFT Plot (16k Points) 0 dBFS 1 kHz Tone, 48 kHz:44.1 kHz .....         | 24 |
| Figure 19. Wideband FFT Plot (16k Points) 0 dBFS 1 kHz Tone, 48 kHz:96 kHz .....           | 24 |
| Figure 20. Wideband FFT Plot (16k Points) 0 dBFS 1 kHz Tone, 96 kHz:48 kHz .....           | 24 |
| Figure 21. Wideband FFT Plot (16k Points) 0 dBFS 1 kHz Tone, 192 kHz:48 kHz .....          | 25 |
| Figure 22. Wideband FFT Plot (16k Points) -60 dBFS 1 kHz Tone, 48 kHz:96 kHz .....         | 25 |
| Figure 23. Wideband FFT Plot (16k Points) -60 dBFS 1 kHz Tone, 48 kHz:48 kHz .....         | 25 |
| Figure 24. Wideband FFT Plot (16k Points) -60 dBFS 1 kHz Tone, 44.1 kHz:192 kHz .....      | 25 |
| Figure 25. Wideband FFT Plot (16k Points) -60 dBFS 1 kHz Tone, 44.1 kHz:48 kHz .....       | 25 |
| Figure 26. Wideband FFT Plot (16k Points) -60 dBFS 1 kHz Tone, 48 kHz:44.1 kHz .....       | 25 |
| Figure 27. Wideband FFT Plot (16k Points) -60 dBFS 1 kHz Tone, 96 kHz:48 kHz .....         | 26 |
| Figure 28. IMD, 10 kHz and 11 kHz -7 dBFS, 96 kHz:48 kHz .....                             | 26 |
| Figure 29. Wideband FFT Plot (16k Points) -60 dBFS 1 kHz Tone, 192 kHz:48 kHz .....        | 26 |
| Figure 30. IMD, 10 kHz and 11 kHz -7 dBFS, 48 kHz:44.1 kHz .....                           | 26 |
| Figure 31. IMD, 10 kHz and 11 kHz -7 dBFS, 44.1 kHz:48 kHz .....                           | 26 |
| Figure 32. Wideband FFT Plot (16k Points) 0 dBFS 20 kHz Tone, 44.1 kHz:48 kHz .....        | 26 |
| Figure 33. Wideband FFT Plot (16k Points) 0 dBFS 80 kHz Tone, 192 kHz:192 kHz .....        | 27 |
| Figure 34. Wideband FFT Plot (16k Points) 0 dBFS 20 kHz Tone, 48 kHz:96 kHz .....          | 27 |
| Figure 35. Wideband FFT Plot (16k Points) 0 dBFS 20 kHz Tone, 48 kHz:48 kHz .....          | 27 |
| Figure 36. Wideband FFT Plot (16k Points) 0 dBFS 20 kHz Tone, 96 kHz:48 kHz .....          | 27 |
| Figure 37. Wideband FFT Plot (16k Points) 0 dBFS 20 kHz Tone, 48 kHz:44.1 kHz .....        | 27 |
| Figure 38. THD+N vs. Output Sample Rate, 0 dBFS 1 kHz Tone, Fsi = 192 kHz .....            | 27 |
| Figure 39. THD+N vs. Output Sample Rate, 0 dBFS 1 kHz Tone, Fsi = 48 kHz .....             | 28 |
| Figure 40. THD+N vs. Output Sample Rate, 0 dBFS 1 kHz Tone, Fsi = 96 kHz .....             | 28 |
| Figure 41. THD+N vs. Output Sample Rate, 0 dBFS 1 kHz Tone, Fsi = 44.1 kHz .....           | 28 |
| Figure 42. Dynamic Range vs. Output Sample Rate, -60 dBFS 1 kHz Tone, Fsi = 192 kHz .....  | 28 |
| Figure 43. THD+N vs. Output Sample Rate, 0 dBFS 1 kHz Tone, Fsi = 32 kHz .....             | 28 |
| Figure 44. Dynamic Range vs. Output Sample Rate, -60 dBFS 1 kHz Tone, Fsi = 32 kHz .....   | 28 |
| Figure 45. Dynamic Range vs. Output Sample Rate, -60 dBFS 1 kHz Tone, Fsi = 96 kHz .....   | 29 |
| Figure 46. Dynamic Range vs. Output Sample Rate, -60 dBFS 1 kHz Tone, Fsi = 44.1 kHz ..... | 29 |
| Figure 47. Frequency Response with 0 dBFS Input .....                                      | 29 |
| Figure 48. Passband Ripple, 192 kHz:48 kHz .....   | 29 |
| Figure 49. Dynamic Range vs. Output Sample Rate, -60 dBFS 1 kHz Tone, Fsi = 48 kHz .....   | 29 |
| Figure 50. Linearity Error, 0 to -140 dBFS Input, 200 Hz Tone, 48 kHz:48 kHz .....         | 29 |
| Figure 51. Linearity Error, 0 to -140 dBFS Input, 200 Hz Tone, 48 kHz:44.1 kHz .....       | 30 |
| Figure 52. Linearity Error, 0 to -140 dBFS Input, 200 Hz Tone, 48 kHz:96 kHz .....         | 30 |
| Figure 53. Linearity Error, 0 to -140 dBFS Input, 200 Hz Tone, 96 kHz:48 kHz .....         | 30 |
| Figure 54. Linearity Error, 0 to -140 dBFS Input, 200 Hz Tone, 44.1 kHz:192 kHz .....      | 30 |
| Figure 55. Linearity Error, 0 to -140 dBFS Input, 200 Hz Tone, 44.1 kHz:48 kHz .....       | 30 |
| Figure 56. Linearity Error, 0 to -140 dBFS Input, 200 Hz Tone, 192 kHz:44.1 kHz .....      | 30 |
| Figure 57. THD+N vs. Input Amplitude, 1 kHz Tone, 48 kHz:44.1 kHz .....                    | 31 |
| Figure 58. THD+N vs. Input Amplitude, 1 kHz Tone, 48 kHz:96 kHz .....                      | 31 |
| Figure 59. THD+N vs. Input Amplitude, 1 kHz Tone, 96 kHz:48 kHz .....                      | 31 |
| Figure 60. THD+N vs. Input Amplitude, 1 kHz Tone, 44.1 kHz:192 kHz .....                   | 31 |
| Figure 61. THD+N vs. Input Amplitude, 1 kHz Tone, 44.1 kHz:48 kHz .....                    | 31 |
| Figure 62. THD+N vs. Input Amplitude, 1 kHz Tone, 192 kHz:48 kHz .....                     | 31 |
| Figure 63. THD+N vs. Frequency Input, 0 dBFS, 48 kHz:44.1 kHz .....                        | 32 |
| Figure 64. THD+N vs. Frequency Input, 0 dBFS, 48 kHz:96 kHz .....                          | 32 |
| Figure 65. THD+N vs. Frequency Input, 0 dBFS, 44.1 kHz:48 kHz .....                        | 32 |
| Figure 66. THD+N vs. Frequency Input, 0 dBFS, 96 kHz:48 kHz .....                          | 32 |

## LIST OF TABLES

|  |    |
|--|----|
| Table 1. Serial Audio Port Master/Slave and Clock Ratio Select Start-Up Options (MS_SEL) ..... | 18 |
| Table 2. Serial Audio Input Port Start-Up Options (SAIF) .....                                 | 18 |
| Table 3. Serial Audio Output Port Start-Up Options (SAOF) .....                                | 18 |

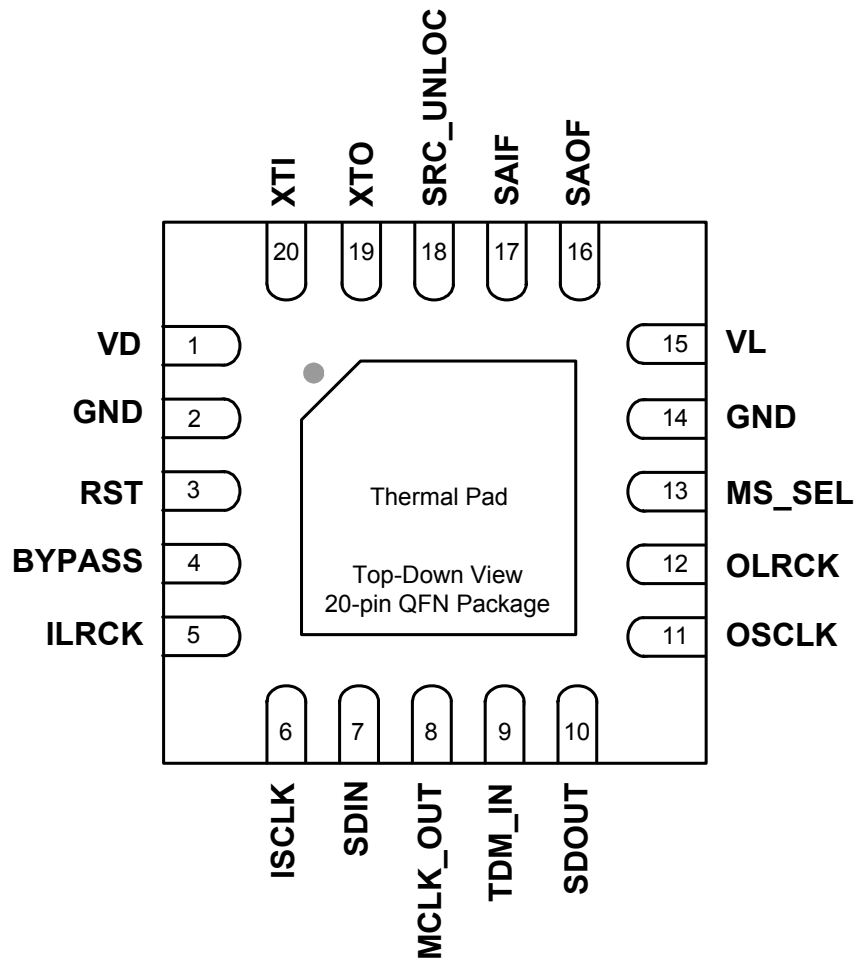
## 1. PIN DESCRIPTIONS

### 1.1 TSSOP PIN DESCRIPTIONS



| Pin Name                | #  | Pin Description   |
|-------------------------|----|---|
| XTO                     | 1  | <b>Crystal Out (Output)</b> - Crystal output for Master clock. See <a href="#">“Master Clock” on page 20</a> .  |
| XTI                     | 2  | <b>Crystal/Oscillator In (Input)</b> - Crystal or digital clock input for Master clock. See <a href="#">“Master Clock” on page 20</a> .   |
| VD                      | 3  | <b>Digital Power (Input)</b> - Digital core power supply. Typically +2.5 V.   |
| GND                     | 4  | <b>Ground (Input)</b> - Ground for I/O and core logic.  |
| $\overline{\text{RST}}$ | 5  | <b>Reset (Input)</b> - When $\overline{\text{RST}}$ is low, the CS8421 enters a low-power mode and all internal states are reset. On initial power-up, $\overline{\text{RST}}$ must be held low until the power supply is stable and all input clocks are stable in frequency and phase.            |
| BYPASS                  | 6  | <b>Sample Rate Converter Bypass (Input)</b> - When BYPASS is high, the sample rate converter will be bypassed, and any data input through the serial audio input port will be directly output on the serial audio output port. When BYPASS is low, the sample rate converter will operate normally. |
| ILRCK                   | 7  | <b>Serial Audio Input Left/Right Clock (Input/Output)</b> - Word-rate clock for the audio data on the SDIN pin.   |
| ISCLK                   | 8  | <b>Serial Audio Bit Clock (Input/Output)</b> - Serial-bit clock for audio data on the SDIN pin.   |
| SDIN                    | 9  | <b>Serial Audio Input Data Port (Input)</b> - Audio data serial input pin.  |
| MCLK_OUT                | 10 | <b>Master Clock Output (Output)</b> - Buffered and level-shifted output for Master clock. If MCLK_OUT is not required, this pin should be pulled high through a 47 k $\Omega$ resistor to turn the output off. See <a href="#">“Master Clock” on page 20</a> .                                      |
| TDM_IN                  | 11 | <b>Serial Audio TDM Input (Input)</b> - Time Division Multiplexing serial audio data input. Grounded when not used. See <a href="#">“Time Division Multiplexing (TDM) Mode” on page 21</a> .  |
| SDOUT                   | 12 | <b>Serial Audio Output Data Port (Output)</b> - Audio data serial output pin. Optionally, this pin may be pulled low through a 47-k $\Omega$ resistor, but must not be pulled high.   |
| OSCLK                   | 13 | <b>Serial Audio Bit Clock (Input/Output)</b> - Serial-bit clock for audio data on the SDOUT pin.  |
| OLRCK                   | 14 | <b>Serial Audio Input Left/Right Clock (Input/Output)</b> - Word-rate clock for the audio data on the SDOUT pin.  |
| MS_SEL                  | 15 | <b>Master/Slave Select (Input)</b> - Used to select Master or Slave for the input and output serial audio ports at startup and reset. See <a href="#">Table 1 on page 18</a> for settings.  |
| GND                     | 16 | <b>Ground (Input)</b> - Ground for I/O and core logic.  |
| VL                      | 17 | <b>Logic Power (Input)</b> - Input/Output power supply. Typically +3.3 V or +5.0 V.   |
| SAOF                    | 18 | <b>Serial Audio Output Format Select (Input)</b> - Used to select the serial audio output format at startup and reset. See <a href="#">Table 3 on page 18</a> for format settings.  |
| SAIF                    | 19 | <b>Serial Audio Input Format Select (Input)</b> - Used to select the serial audio input format at startup and reset. See <a href="#">Table 2 on page 18</a> for format settings.  |
| SRC_UNLOCK              | 20 | <b>SRC Unlock Indicator (Output)</b> - Indicates when the SRC is unlocked. See <a href="#">“SRC Locking and Varispeed” on page 19</a> .   |

1.2 QFN PIN DESCRIPTIONS



| Pin Name                | #  | Pin Description   |
|-------------------------|----|---|
| VD                      | 1  | <b>Digital Power (Input)</b> - Digital core power supply. Typically +2.5 V.   |
| GND                     | 2  | <b>Ground (Input)</b> - Ground for I/O and core logic.  |
| $\overline{\text{RST}}$ | 3  | <b>Reset (Input)</b> - When $\overline{\text{RST}}$ is low, the CS8421 enters a low-power mode and all internal states are reset. On initial power-up, $\overline{\text{RST}}$ must be held low until the power supply is stable and all input clocks are stable in frequency and phase.            |
| BYPASS                  | 4  | <b>Sample Rate Converter Bypass (Input)</b> - When BYPASS is high, the sample-rate converter will be bypassed, and any data input through the serial audio input port will be directly output on the serial audio output port. When BYPASS is low, the sample rate converter will operate normally. |
| ILRCK                   | 5  | <b>Serial Audio Input Left/Right Clock (Input/Output)</b> - Word-rate clock for the audio data on the SDIN pin.   |
| ISCLK                   | 6  | <b>Serial Audio Bit Clock (Input/Output)</b> - Serial-bit clock for audio data on the SDIN pin.   |
| SDIN                    | 7  | <b>Serial Audio Input Data Port (Input)</b> - Audio data serial input pin.  |
| MCLK_OUT                | 8  | <b>Master Clock Output (Output)</b> - Buffered and level-shifted output for Master clock. If MCLK_OUT is not required, this pin should be pulled high through a 47 k $\Omega$ resistor to turn the output off. See <a href="#">“Master Clock” on page 20</a> .                                      |
| TDM_IN                  | 9  | <b>Serial Audio TDM Input (Input)</b> - Time Division Multiplexing serial audio data input. Grounded when not used. See <a href="#">“Time Division Multiplexing (TDM) Mode” on page 21</a> .  |
| SDOUT                   | 10 | <b>Serial Audio Output Data Port (Output)</b> - Audio data serial output pin. Optionally, this pin may be pulled low through a 47-k $\Omega$ resistor, but must not be pulled high.   |
| OSCLK                   | 11 | <b>Serial Audio Bit Clock (Input/Output)</b> - Serial bit clock for audio data on the SDOUT pin.  |
| OLRCK                   | 12 | <b>Serial Audio Input Left/Right Clock (Input/Output)</b> - Word rate clock for the audio data on the SDOUT pin.  |
| MS_SEL                  | 13 | <b>Master/Slave Select (Input)</b> - Used to select Master or Slave for the input and output serial audio ports at startup and reset. See <a href="#">Table 1 on page 18</a> for settings.  |
| GND                     | 14 | <b>Ground (Input)</b> - Ground for I/O and core logic.  |
| VL                      | 15 | <b>Logic Power (Input)</b> - Input/Output power supply. Typically +3.3 V or +5.0 V.   |
| SAOF                    | 16 | <b>Serial Audio Output Format Select (Input)</b> - Used to select the serial audio output format at startup and reset. See <a href="#">Table 3 on page 18</a> for format settings.  |
| SAIF                    | 17 | <b>Serial Audio Input Format Select (Input)</b> - Used to select the serial audio input format at startup and reset. See <a href="#">Table 2 on page 18</a> for format settings.  |
| SRC_UNLOCK              | 18 | <b>SRC Unlock Indicator (Output)</b> - Indicates when the SRC is unlocked. See <a href="#">“SRC Locking and Varispeed” on page 19</a> .   |
| XTO                     | 19 | <b>Crystal Out (Output)</b> - Crystal output for Master clock. See <a href="#">“Master Clock” on page 20</a> .  |
| XTI                     | 20 | <b>Crystal/Oscillator In (Input)</b> - Crystal or digital clock input for Master clock. See <a href="#">“Master Clock” on page 20</a> .   |
| Thermal Pad             | -  | <b>Thermal Pad</b> - Thermal relief pad for optimized heat dissipation. This pad must be electrically connected to GND. See <a href="#">“Power Supply, Grounding, and PCB Layout” on page 23</a> for more information.  |



## 2. CHARACTERISTICS AND SPECIFICATIONS

(All Min/Max characteristics and specifications are guaranteed over the Specified Operating Conditions. Typical performance characteristics and specifications are derived from measurements taken at nominal supply voltages and  $T_A = 25^\circ\text{C}$ .)

### SPECIFIED OPERATING CONDITIONS

(GND = 0 V, all voltages with respect to 0 V)

| Parameter                      | Symbol | Min   | Nominal    | Max  | Units |                  |
|--------------------------------|--------|-------|------------|------|-------|------------------|
| Power Supply Voltage           | VD     | 2.38  | 2.5        | 2.62 | V     |                  |
|                                | VL     | 3.14  | 3.3 or 5.0 | 5.25 | V     |                  |
| Ambient Operating Temperature: | '-CZ'  | $T_A$ | -10        | -    | +70   | $^\circ\text{C}$ |
|                                | '-CNZ' |       | -10        | -    | +70   | $^\circ\text{C}$ |
|                                | '-DZ'  |       | -40        | -    | +85   | $^\circ\text{C}$ |
|                                | '-EZ'  |       | -40        | -    | +105  | $^\circ\text{C}$ |
|                                | '-ENZ' |       | -40        | -    | +105  | $^\circ\text{C}$ |

### ABSOLUTE MAXIMUM RATINGS

(GND = 0 V; all voltages with respect to 0 V. Operation beyond these limits may result in permanent damage to the device. Normal operation is not guaranteed at these extremes.)

| Parameter                                       | Symbol    | Min  | Max      | Units            |
|---|-----------|------|----------|------------------|
| Power Supply Voltage                            | VD        | -0.3 | 3.5      | V                |
|   | VL        | -0.3 | 6.0      | V                |
| Input Current, Any Pin Except Supplies (Note 1) | $I_{in}$  | -    | $\pm 10$ | mA               |
| Input Voltage                                   | $V_{in}$  | -0.3 | VL+0.4   | V                |
| Ambient Operating Temperature (power applied)   | $T_A$     | -55  | +125     | $^\circ\text{C}$ |
| Storage Temperature                             | $T_{stg}$ | -65  | +150     | $^\circ\text{C}$ |

#### Notes:

1. Transient currents of up to 100 mA will not cause SCR latch-up.
2. Numbers separated by a colon indicate input and output sample rates. For example, 48 kHz:96 kHz indicates that  $F_{si} = 48 \text{ kHz}$  and  $F_{so} = 96 \text{ kHz}$ .

## PERFORMANCE SPECIFICATIONS

(XTI/XTO = 27 MHz; Input signal = 1.000 kHz, 0 dBFS, Measurement Bandwidth = 20 to Fso/2 Hz, and Word Width = 32-Bits, unless otherwise stated.)

| Parameter  |            | Min      | Typ  | Max     | Units   |
|--|------------|----------|------|---------|---------|
| Resolution   |            | 16       | -    | 32      | bits    |
| Sample Rate with XTI = 27.000 MHz  | Slave      | 7.2      | -    | 207     | kHz     |
|  | Master     | 53       | -    | 211     | kHz     |
| Sample Rate with other XTI clocks  | Slave      | XTI/3750 | -    | XTI/130 | kHz     |
|  | Master     | XTI/512  | -    | XTI/128 | kHz     |
| Sample Rate with ring oscillator (XTI to GND or VL, XTO floating)              |            | 12       | -    | 96      | kHz     |
| Sample Rate Ratio - Upsampling   |            | -        | -    | 1:8     |         |
| Sample Rate Ratio - Downsampling   |            | -        | -    | 7.5:1   |         |
| Gain Error   |            | -0.2     | -    | -0.02   | dB      |
| Interchannel Gain Mismatch   |            | -        | 0.0  | -       | dB      |
| Interchannel Phase Deviation   |            | -        | 0.0  | -       | Degrees |
| Peak Idle Channel Noise Component (32-bit operation)                           |            | -        | -    | -192    | dBFS    |
| <b>Dynamic Range (20 Hz to Fso/2, 1 kHz, -60 dBFS Input)</b>                   |            |          |      |         |         |
| 44.1 kHz:48 kHz  | A-Weighted | -        | 180  | -       | dB      |
|  | Unweighted | -        | 177  | -       | dB      |
| 44.1 kHz:192 kHz   | A-Weighted | -        | 175  | -       | dB      |
|  | Unweighted | -        | 172  | -       | dB      |
| 48 kHz:44.1 kHz  | A-Weighted | -        | 180  | -       | dB      |
|  | Unweighted | -        | 177  | -       | dB      |
| 48 kHz:96 kHz  | A-Weighted | -        | 179  | -       | dB      |
|  | Unweighted | -        | 176  | -       | dB      |
| 96 kHz:48 kHz  | A-Weighted | -        | 176  | -       | dB      |
|  | Unweighted | -        | 173  | -       | dB      |
| 192 kHz:32 kHz   | A-Weighted | -        | 175  | -       | dB      |
|  | Unweighted | -        | 172  | -       | dB      |
| <b>Total Harmonic Distortion + Noise (20 Hz to Fso/2, 1 kHz, 0 dBFS Input)</b> |            |          |      |         |         |
| 32 kHz:48 kHz  |            | -        | -161 | -       | dB      |
| 44.1 kHz:48 kHz  |            | -        | -171 | -       | dB      |
| 44.1 kHz:192 kHz   |            | -        | -130 | -       | dB      |
| 48 kHz:44.1 kHz  |            | -        | -160 | -       | dB      |
| 48 kHz:96 kHz  |            | -        | -148 | -       | dB      |
| 96 kHz:48 kHz  |            | -        | -168 | -       | dB      |
| 192 kHz:32 kHz   |            | -        | -173 | -       | dB      |

## DIGITAL FILTER CHARACTERISTICS

| Parameter                             | Min                   | Typ      | Max                   | Units |
|---------------------------------------|-----------------------|----------|-----------------------|-------|
| Passband (Upsampling or Downsampling) | -                     | -        | $0.4535 \cdot F_{so}$ | Hz    |
| Passband Ripple                       | -                     | -        | $\pm 0.007$           | dB    |
| Stopband                              | $0.5465 \cdot F_{so}$ | -        | -                     | Hz    |
| Stopband Attenuation                  | 125                   | -        | -                     | dB    |
| Group Delay                           | SRC Mode              | (Note 3) | -                     | s     |
|                                       | Bypass Mode           | -        | $3/F_{si}$            | s     |

3. The equation for the group delay through the sample-rate converter is  $(56.581 / F_{si}) + (55.658 / F_{so})$ . For example, if the input sample rate is 192 kHz and the output sample rate is 96 kHz, the group delay through the sample-rate converter is  $(56.581/192,000) + (55.658/96,000) = .875$  milliseconds.

## DC ELECTRICAL CHARACTERISTICS

(GND = 0 V; all voltages with respect to 0 V.)

| Parameter   | Symbol     | Min | Typ | Max | Units   |
|---|------------|-----|-----|-----|---------|
| <b>Power-Down Mode (Note 4)</b>   |            |     |     |     |         |
| Supply Current in power-down<br>(Oscillator attached to XTI-XTO)                    | VD         |     | 50  |     | $\mu$ A |
|   | VL = 3.3 V |     | 100 |     | $\mu$ A |
|   | VL = 5.0 V |     | 200 |     | $\mu$ A |
| Supply Current in power-down<br>(Crystal attached to XTI-XTO)                       | VD         |     | 100 |     | $\mu$ A |
|   | VL = 3.3 V |     | 1.5 |     | mA      |
|   | VL = 5.0 V |     | 4   |     | mA      |
| <b>Normal Operation (Note 5)</b>  |            |     |     |     |         |
| Supply Current at 48 kHz $F_{si}$ and $F_{so}$<br>(Oscillator attached to XTI-XTO)  | VD         |     | 24  |     | mA      |
|   | VL = 3.3 V |     | 2.5 |     | mA      |
|   | VL = 5.0 V |     | 4   |     | mA      |
| Supply Current at 192 kHz $F_{si}$ and $F_{so}$<br>(Oscillator attached to XTI-XTO) | VD         |     | 80  |     | mA      |
|   | VL = 3.3 V |     | 8   |     | mA      |
|   | VL = 5.0 V |     | 13  |     | mA      |
| Supply Current at 48 kHz $F_{si}$ and $F_{so}$<br>(Crystal attached to XTI-XTO)     | VD         |     | 24  |     | mA      |
|   | VL = 3.3 V |     | 3   |     | mA      |
|   | VL = 5.0 V |     | 7   |     | mA      |
| Supply Current at 192 kHz $F_{si}$ and $F_{so}$<br>(Crystal attached to XTI-XTO)    | VD         |     | 80  |     | mA      |
|   | VL = 3.3 V |     | 4   |     | mA      |
|   | VL = 5.0 V |     | 6.5 |     | mA      |

4. Power Down Mode is defined as  $\overline{RST} = \text{LOW}$  with all clocks and data lines held static, except when a crystal is attached across XTI-XTO, in which case the crystal will begin oscillating.
5. Normal operation is defined as  $\overline{RST} = \text{HI}$ .

## DIGITAL INPUT CHARACTERISTICS

| Parameters            | Symbol   | Min | Typ | Max | Units |
|-----------------------|----------|-----|-----|-----|-------|
| Input Leakage Current | $I_{in}$ | -   | -   | ±10 | μA    |
| Input Capacitance     | $I_{in}$ | -   | 8   | -   | pF    |
| Input Hysteresis      |          | -   | 250 | -   | mV    |

## DIGITAL INTERFACE SPECIFICATIONS

(GND = 0 V; all voltages with respect to 0 V.)

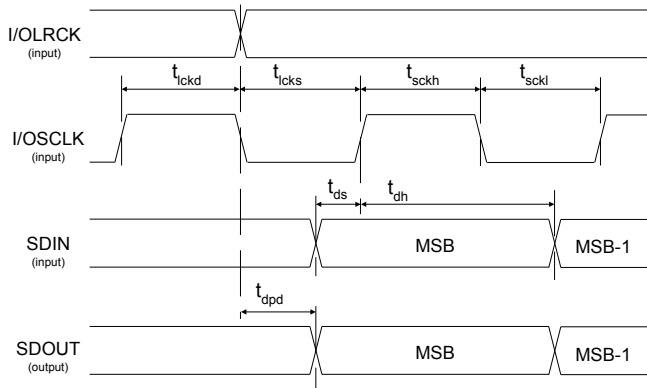
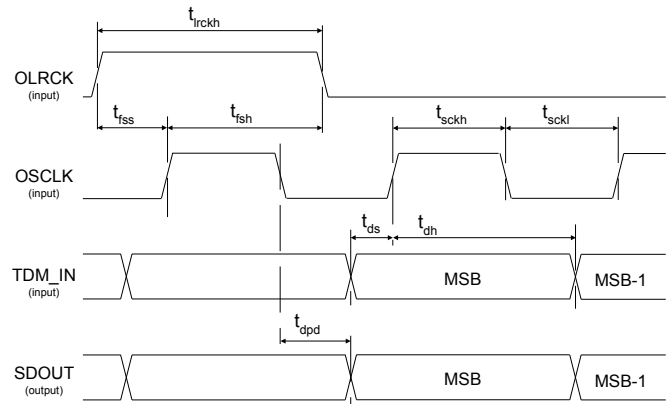
| Parameters   | Symbol   | Min     | Max    | Units |
|--|----------|---------|--------|-------|
| High-Level Output Voltage, except MCLK_OUT and SDOUT ( $I_{OH}=-4$ mA) | $V_{OH}$ | 0.77xVL | -      | V     |
| Low-Level Output Voltage, except MCLK_OUT and SDOUT ( $I_{OL}=4$ mA)   | $V_{OL}$ | -       | .6     | V     |
| High-Level Output Voltage, MCLK_OUT ( $I_{OH}=-6$ mA)                  | $V_{OH}$ | 0.77xVL | -      | V     |
| Low-Level Output Voltage, MCLK_OUT ( $I_{OL}=6$ mA)                    | $V_{OL}$ | -       | .6     | V     |
| High-Level Output Voltage, SDOUT ( $I_{OH}=-8$ mA)                     | $V_{OH}$ | 0.77xVL | -      | V     |
| Low-Level Output Voltage, SDOUT ( $I_{OL}=8$ mA)                       | $V_{OL}$ | -       | .65    | V     |
| High-Level Input Voltage   | $V_{IH}$ | 0.6xVL  | VL+0.3 | V     |
| Low-Level Input Voltage  | $V_{IL}$ | -0.3    | 0.8    | V     |

## SWITCHING SPECIFICATIONS

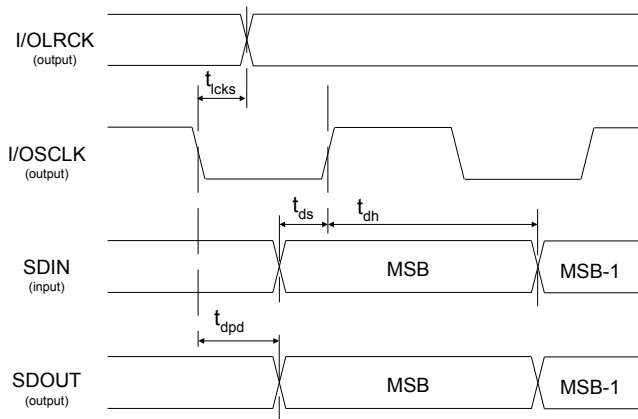
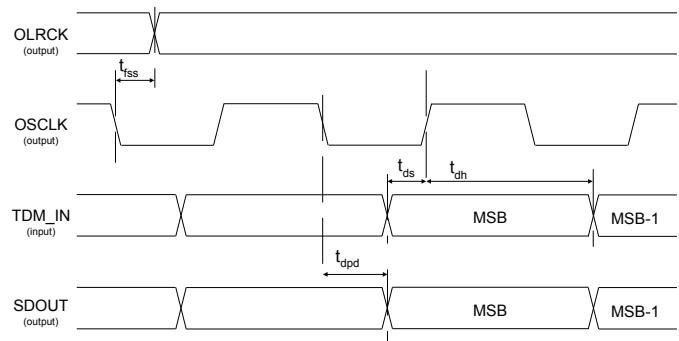
(Inputs: Logic 0 = 0 V, Logic 1 = VL;  $C_L = 20$  pF)

| Parameters  | Symbol      | Min                  | Max    | Units  |
|---|-------------|----------------------|--------|--------|
| RST pin Low Pulse Width (Note 6)                    |             | 1                    | -      | ms     |
| XTI Frequency (Note 7)                              | Crystal     | 16.384               | 27.000 | MHz    |
|   |             | Digital Clock Source | 1.024  | 27.000 |
| XTI Pulse Width High/Low                            |             | 14.8                 | -      | ns     |
| MCLK_OUT Duty Cycle                                 |             | 45                   | 55     | %      |
| <b>Slave Mode</b>                                   |             |                      |        |        |
| I/OSCLK Frequency                                   |             | -                    | 24.576 | MHz    |
| OLRCK High Time (Note 8)                            | $t_{lrckh}$ | 326                  | -      | ns     |
| I/OSCLK High Time                                   | $t_{sckh}$  | 9                    | -      | ns     |
| I/OSCLK Low Time                                    | $t_{sckl}$  | 9                    | -      | ns     |
| I/OLRCK Edge to I/OSCLK Rising                      | $t_{lcks}$  | 6                    | -      | ns     |
| OLRCK Rising Edge to OSCLK Rising Edge (TDM)        | $t_{fss}$   | 5                    | -      | ns     |
| I/OSCLK Rising Edge to I/OLRCK Edge                 | $t_{lckd}$  | 5                    | -      | ns     |
| OSCLK Rising Edge to OLRCK Falling Edge (TDM)       | $t_{fsh}$   | 5                    | -      | ns     |
| OSCLK Falling Edge/OLRCK Edge to SDOUT Output Valid | $t_{dpd}$   | -                    | 18     | ns     |
| SDIN/TDM_IN Setup Time Before I/OSCLK Rising Edge   | $t_{ds}$    | 3.5                  | -      | ns     |
| SDIN/TDM_IN Hold Time After I/OSCLK Rising Edge     | $t_{dh}$    | 5                    | -      | ns     |

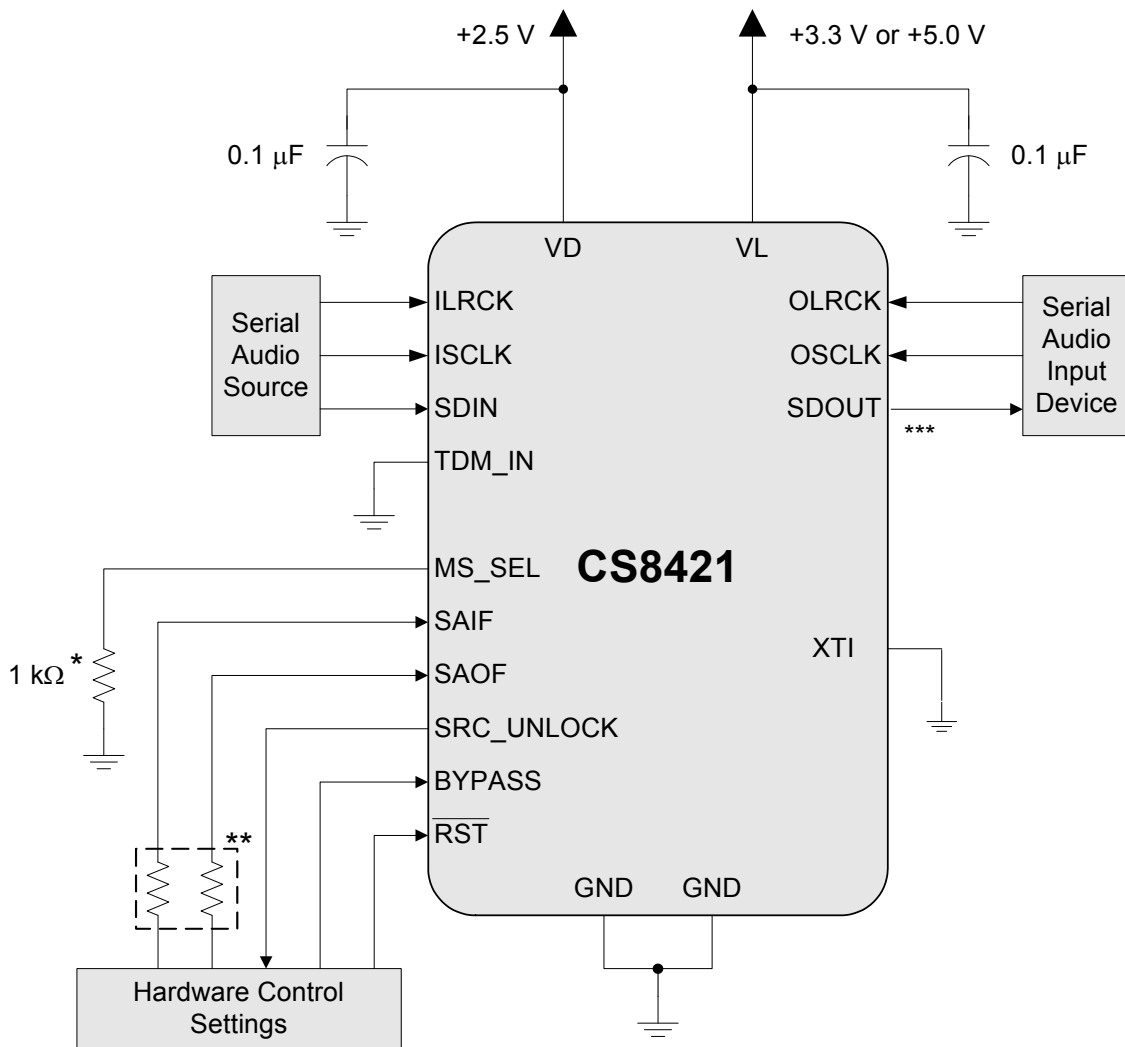
| Parameters  | Symbol     | Min      | Max | Units |
|---|------------|----------|-----|-------|
| <b>Master Mode (Note 9)</b>                       |            |          |     |       |
| I/OSCLK Frequency (non-TDM)                       |            | 64*Fsi/o |     | MHz   |
| OSCLK Frequency (TDM)                             |            | 256*Fso  |     | MHz   |
| I/OLRCK Duty Cycle                                |            | 45       | 55  | %     |
| I/OSCLK Duty Cycle                                |            | 45       | 55  | %     |
| I/OSCLK Falling Edge to I/OLRCK Edge              | $t_{lcks}$ | -        | 5   | ns    |
| OSCLK Falling Edge to OLRCK Edge (TDM)            | $t_{fss}$  | -        | 5   | ns    |
| OSCLK Falling Edge to SDOUT Output Valid          | $t_{dpd}$  | -        | 7   | ns    |
| SDIN/TDM_IN Setup Time Before I/OSCLK Rising Edge | $t_{ds}$   | 3        | -   | ns    |
| SDIN/TDM_IN Hold Time After I/OSCLK Rising Edge   | $t_{dh}$   | 5        | -   | ns    |


**Figure 1. Non-TDM Slave Mode Timing**

**Figure 2. TDM Slave Mode Timing**

6. After powering up the CS8421,  $\overline{RST}$  should be held low until the power supplies and clocks are settled.
7. The maximum possible sample rate is  $XTI/128$ .
8. OLRCK must remain high for at least 8 OSCLK periods in TDM Mode.
9. Only the input or the output serial port can be set as master at a given time.


**Figure 3. Non-TDM Master Mode Timing**

**Figure 4. TDM Master Mode Timing**

### 3. TYPICAL CONNECTION DIAGRAMS

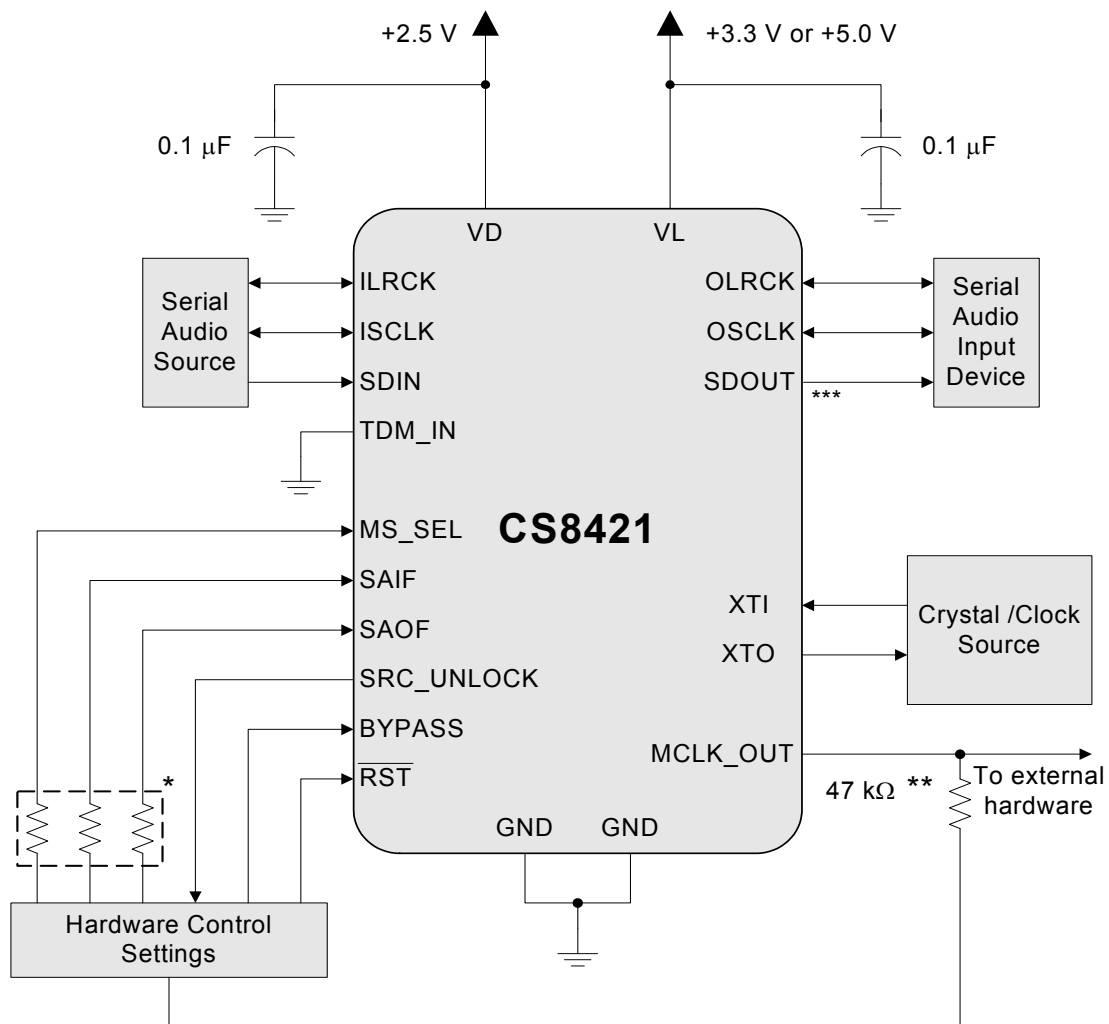


**Figure 5. Typical Connection Diagram, No External Master Clock**

\* When no external master clock is supplied to the part, both input and output must be set to Slave Mode for the part to operate properly. This is done by connecting the MS\_SEL pin to ground through a resistance of 0 Ω to 1 kΩ + 1% as stated in [Table 1, “Serial Audio Port Master/Slave and Clock Ratio Select Start-Up Options \(MS\\_SEL\),” on page 18.](#)

\*\* The connection (VL or GND) and value of these two resistors determines the mode of operation for the input and output serial ports as described in [Table 2 on page 18](#) and [Table 3 on page 18.](#)

\*\*\* This pin must not be pulled high. See [Section 1, “Pin Descriptions.”](#)



**Figure 6. Typical Connection Diagram, Master and Slave Modes**

\* The connection (VL or GND) and value of these three resistors determines the mode of operation for the input and output serial ports as described in [Table 1 Serial Audio Port Master/Slave and Clock Ratio Select Start-Up Options \(MS\\_SEL\)](#), and [Table 2, “Serial Audio Input Port Start-Up Options \(SAIF\),” on page 18](#) and [Table 3, “Serial Audio Output Port Start-Up Options \(SAOF\),” on page 18](#).

\*\* MCLK\_OUT pin should be pulled high through a 47 kΩ resistor if an MCLK output is not needed.

\*\*\* This pin must not be pulled high. See [Section 1, “Pin Descriptions.”](#)

---

## 4. APPLICATIONS

The CS8421 is a 32-bit, high-performance, monolithic CMOS stereo asynchronous sample-rate converter.

The digital audio data is input and output through configurable 3-wire serial ports. The digital audio input/output ports offer Left-Justified, Right-Justified, and I<sup>2</sup>S serial audio formats. The CS8421 also supports a TDM Mode which allows multiple channels of digital audio data on one serial line. A Bypass Mode allows the data to be passed directly to the output port without sample rate conversion.

The CS8421 does not require a control port interface, helping to speed design time by not requiring the user to develop software to configure the part. Pins that are sensed after reset allow the part to be configured. See “Reset, Power-Down, and Start-Up” on page 22.

Target applications include digital recording systems (DVD-R/RW, CD-R/RW, PVR, DAT, MD, and VTR), digital mixing consoles, high quality D/A, effects processors and computer audio systems.

Figure 5 and 6 show the supply and external connections to the CS8421.

### 4.1 Three-wire Serial Input/Output Audio Port

A 3-wire serial audio input/output port is provided. The interface format should be chosen to suit the attached device through the MS\_SEL, SAIF, and SAOF pins. Tables 1, 2, and 3 show the pin functions and their corresponding settings. The following parameters are adjustable:

- Master or Slave
- Master clock (MCLK) frequencies of  $128 \cdot F_{si/o}$ ,  $256 \cdot F_{si/o}$ ,  $384 \cdot F_{si/o}$ , and  $512 \cdot F_{si/o}$  (Master Mode)
- Audio data resolution of 16-, 20-, 24-, or 32-bits
- Left- or Right-Justification of the data relative to left/right clock (LRCK) as well as I<sup>2</sup>S

Figures 7, 8, and 9 show the input/output formats available.

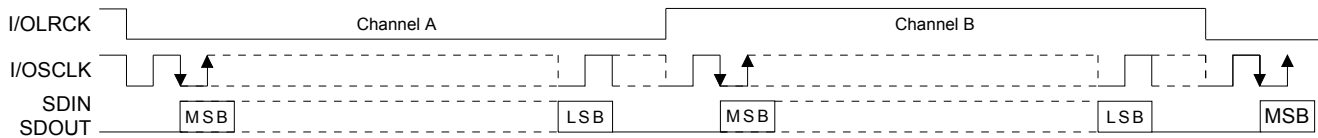
In Master Mode, the left/right clock and the serial bit clock are outputs, derived from the XTI input pin master clock.

In Slave Mode, the left/right clock and the serial bit clock are inputs and may be asynchronous to the XTI master clock. The left/right clock should be continuous, but the duty cycle can be less than 50% if enough serial clocks are present in each phase to clock all of the data bits.

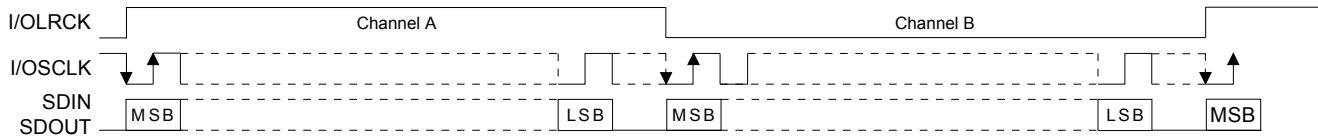
ISCLK is always set to  $64 \cdot F_{si}$  when the input is set to master. In normal operation, OSCLK is set to  $64 \cdot F_{so}$ . In TDM Slave Mode, OSCLK must operate at  $N \cdot 64 \cdot F_{so}$ , where N is the number of CS8421's connected together. In TDM Master Mode, OSCLK is set to  $256 \cdot F_{so}$

For more information about serial audio formats, refer to the Cirrus Logic applications note AN282, “The 2-Channel Serial Audio Interface: A Tutorial”, available at [www.cirrus.com](http://www.cirrus.com).

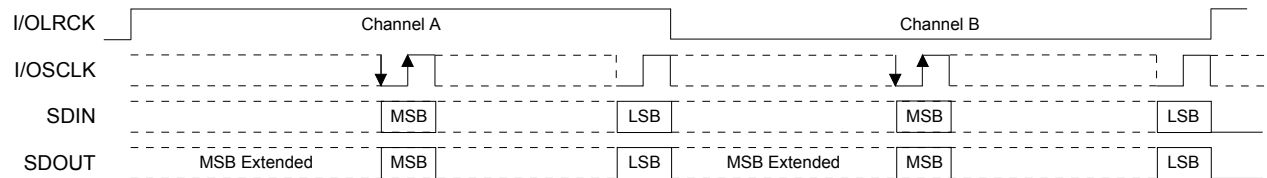




**Figure 7. Serial Audio Interface Format - I²S**



**Figure 8. Serial Audio Interface Format - Left-Justified**



**Figure 9. Serial Audio Interface Format - Right-Justified**

## 4.2 Mode Selection

The CS8421 uses the resistors attached to the MS\_SEL, SAIF, and SAOF pins to determine the modes of operation. After reset, the resistor value and condition (VL or GND) are sensed. This operation will take approximately 4  $\mu$ s to complete. The SRC\_UNLOCK pin will remain high and the SDOUT pin will be muted until the mode detection sequence has completed. After this, if all clocks are stable, SRC\_UNLOCK will be brought low when audio output is valid and normal operation will occur. [Tables 1, 2, and 3](#) show the pin functions and their corresponding settings. If the 1.0 k $\Omega$  option is selected for MS\_SEL, SAIF, or SAOF, the resistor connected to that pin may be replaced by a direct connection to VL or GND as appropriate.

The resistor attached to each mode-selection pin should be placed physically close to the CS8421. The end of the resistor not connected to the mode selection pins should be connected as close as possible to VL and GND to minimize noise. [Tables 1, 2, and 3](#) show the pin functions and their corresponding settings.

| MS_SEL pin          | Input M/S          | Output M/S         |
|---------------------|--------------------|--------------------|
| 1.0 kΩ ± 1% to GND  | Slave              | Slave              |
| 1.96 kΩ ± 1% to GND | Slave              | Master (128 x Fso) |
| 4.02 kΩ ± 1% to GND | Slave              | Master (256 x Fso) |
| 8.06 kΩ ± 1% to GND | Slave              | Master (384 x Fso) |
| 16.2 kΩ ± 1% to GND | Slave              | Master (512 x Fso) |
| 1.0 kΩ ± 1% to VL   | Master (128 x Fsi) | Slave              |
| 1.96 kΩ ± 1% to VL  | Master (256 x Fsi) | Slave              |
| 4.02 kΩ ± 1% to VL  | Master (384 x Fsi) | Slave              |
| 8.06 kΩ ± 1% to VL  | Master (512 x Fsi) | Slave              |

**Table 1. Serial Audio Port Master/Slave and Clock Ratio Select Start-Up Options (MS\_SEL)**

| SAIF pin            | Input Port Configuration           |
|---------------------|------------------------------------|
| 1.0 kΩ ± 1% to GND  | I <sup>2</sup> S up to 32-bit data |
| 1.96 kΩ ± 1% to GND | Left-Justified up to 32-bit data   |
| 4.02 kΩ ± 1% to GND | Right-Justified 16-bit data        |
| 1.0 kΩ ± 1% to VL   | Right-Justified 20-bit data        |
| 1.96 kΩ ± 1% to VL  | Right-Justified 24-bit data        |
| 4.02 kΩ ± 1% to VL  | Right-Justified 32-bit data        |

**Table 2. Serial Audio Input Port Start-Up Options (SAIF)**

| SAOF pin             | Output Port Configuration    |
|----------------------|------------------------------|
| 1.0 kΩ ± 1% to GND   | I <sup>2</sup> S 16-bit data |
| 1.96 kΩ ± 1% to GND  | I <sup>2</sup> S 20-bit data |
| 4.02 kΩ ± 1% to GND  | I <sup>2</sup> S 24-bit data |
| 8.06 kΩ ± 1% to GND  | I <sup>2</sup> S 32-bit data |
| 16.2 kΩ ± 1% to GND  | Left-Justified 16-bit data   |
| 32.4 kΩ ± 1% to GND  | Left-Justified 20-bit data   |
| 63.4 kΩ ± 1% to GND  | Left-Justified 24-bit data   |
| 127.0 kΩ ± 1% to GND | Left-Justified 32-bit data   |
| 1.0 kΩ ± 1% to VL    | Right-Justified 16-bit data  |
| 1.96 kΩ ± 1% to VL   | Right-Justified 20-bit data  |
| 4.02 kΩ ± 1% to VL   | Right-Justified 24-bit data  |
| 8.06 kΩ ± 1% to VL   | Right-Justified 32-bit data  |
| 16.2 kΩ ± 1% to VL   | TDM Mode 16-bit data         |
| 32.4 kΩ ± 1% to VL   | TDM Mode 20-bit data         |
| 63.4 kΩ ± 1% to VL   | TDM Mode 24-bit data         |
| 127.0 kΩ ± 1% to VL  | TDM Mode 32-bit data         |

**Table 3. Serial Audio Output Port Start-Up Options (SAOF)**

### 4.3 Sample Rate Converter (SRC)

Multirate digital signal processing techniques are used to conceptually upsample the incoming data to a very high rate and then downsample to the outgoing rate. The internal data path is 32-bits wide even if a lower bit depth is selected at the output. The filtering is designed so that a full input audio bandwidth of 20 kHz is preserved if the input sample and output sample rates are greater than or equal to 44.1 kHz. When the output sample rate becomes less than the input sample rate, the input is automatically band-limited to avoid aliasing products in the output. Careful design ensures minimum ripple and distortion products are added to the incoming signal. The SRC also determines the ratio between the incoming and outgoing sample rates and sets the filter corner frequencies appropriately. Any jitter in the incoming signal has little impact on the dynamic performance of the rate converter and has no influence on the output clock.

#### 4.3.1 Data Resolution and Dither

When using the serial audio input port in Left-Justified and I<sup>2</sup>S Modes, all input data is treated as 32-bits wide. Any truncation that has been done prior to the CS8421 to less than 32-bits should have been done using an appropriate dithering process. If the serial audio input port is in Right-Justified Mode, the input data will be truncated to the bit depth set by SAIF pin setting. If the SAIF bit depth is set to 16-, 20-, or 24-bits, and the input data is 32-bits wide, truncation distortion will occur. Similarly, in any serial audio input port mode, if an inadequate number of bit clocks are entered (i.e. 16 clocks instead of 20 clocks), the input words will be truncated, causing truncation distortion at low levels. In summary, there is no dithering mechanism on the input side of the CS8421, and care must be taken to ensure that no truncation occurs.

Dithering is used internally where appropriate inside the SRC block.

The output side of the SRC can be set to 16-, 20-, 24-, or 32-bits. Dithering is applied and is automatically scaled to the selected output word length. This dither is not correlated between left and right channels.

#### 4.3.2 SRC Locking and Varispeed

The SRC calculates the ratio between the input sample rate and the output sample rate and uses this information to set up various parameters inside the SRC block. The SRC takes some time to make this calculation, approximately  $4200/F_{so}$  (87.5 ms at  $F_{so}$  of 48 kHz).

If  $F_{si}$  is changing, as in a varispeed application, the SRC will track the incoming sample rate. During this tracking mode, the SRC will still rate convert the audio data, but at increased distortion levels. Once the incoming sample rate is stable, the SRC will return to normal levels of audio quality. The data buffer in the SRC can overflow if the input sample rate changes at greater than 10%/sec. There is no provision for varispeed applications where  $F_{so}$  is changing.

The SRC\_UNLOCK pin is used to indicate when the SRC is not locked. When  $\overline{RST}$  is asserted, or if there is a change in  $F_{si}$  or  $F_{so}$ , SRC\_UNLOCK will be set high. The SRC\_UNLOCK pin will continue to be high until the SRC has reacquired lock and settled, at which point it will transition low. When the SRC\_UNLOCK pin is set low, SDOUT is outputting valid audio data. This can be used to signal a DAC to unmute its output.

#### 4.3.3 Bypass Mode

When the BYPASS pin is set high, the input data bypasses the sample rate converter and is sent directly to the serial audio output port. No dithering is performed on the output data. This mode is ideal for passing non-audio data through without a sample-rate conversion. ILRCK and OLRCK should be the same sample rate and synchronous in this mode. The group delay in this mode is greatly reduced from normal SRC mode as noted in the [“Digital Filter Characteristics” on page 11](#).

#### 4.3.4 Muting

The SDOUT pin is set to all zero output (full mute) immediately after the  $\overline{\text{RST}}$  pin is set high. When the output from the SRC becomes valid, though the SRC may not have reached full performance, SDOUT is unmuted over a period of approximately 4096 OLRCK cycles (soft unmuted). When the output becomes invalid, depending on the condition, SDOUT is either immediately set to all zero output (hard muted) or SDOUT is muted over a period of approximately 4096 OLRCK cycles until it reaches full mute (soft muted). The SRC will soft mute SDOUT if there is an illegal ratio between ILRCK and the XTI master clock. Conditions that will cause the SRC to hard mute SDOUT include removing OLRCK, the  $\overline{\text{RST}}$  pin being set low, or illegal ratios between OLRCK and the XTI master clock. After all invalid states have been cleared, the SRC will soft unmute SDOUT.

#### 4.3.5 Group Delay and Phase Matching Between Multiple CS8421 Parts

The equation for the group delay through the sample rate converter is shown in “[Digital Filter Characteristics](#)” on page 11. This phase delay is equal across multiple parts. Therefore, when multiple parts operate at the same Fsi and Fso and use a common XTI/XTO clock, their output data is phase matched.

#### 4.3.6 Master Clock

The CS8421 uses the clock signal supplied through XTI as its master clock (MCLK). MCLK can be supplied from a digital clock source, a crystal oscillator, or a fundamental mode crystal. [Figure 10](#) shows the typical connection diagram for using a fundamental mode crystal. Please refer to the crystal manufacturer’s specifications for the external capacitor recommendations. If XTO is not used, such as with a digital clock source or crystal oscillator, XTO should be left unconnected or pulled low through a 47 k $\Omega$  resistor to GND.

If either serial audio port is set as master, MCLK will be used to supply the sub-clocks to the master SCLK and LRCK. In this case, MCLK will be synchronous to the master serial audio port. If both serial audio ports are set as slave, MCLK can be asynchronous to either or both ports. If the user needs to change the clock source to XTI while the CS8421 is still powered on and running, a RESET must be issued once the XTI clock source is present and valid to ensure proper operation.

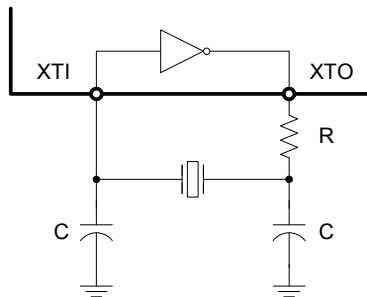
When both serial ports are configured as slave and operating at sample rates less than 96 kHz, the CS8421 has the ability to operate without a master clock input through XTI. This benefits the design by not requiring extra external clock components (lowering production cost) and not requiring a master clock to be routed to the CS8421, resulting in lowered noise contribution in the system. In this mode, an internal oscillator provides the clock to run all of the internal logic. To enable the internal oscillator, simply tie XTI to GND or VL. In this mode, XTO should be left unconnected.

The CS8421 can also provide a buffered MCLK output through the MCLK\_OUT pin. This pin can be used to supply MCLK to other system components that operate synchronously to MCLK. If MCLK\_OUT is not needed, the output of the pin can be disabled by pulling the pin high through a 47 k $\Omega$  resistor to VL. MCLK\_OUT is also disabled when using the internal oscillator mode. The MCLK\_OUT pin will be set low when disabled by using the internal oscillator mode.

### 4.3.7 Clocking

In order to ensure proper operation of the CS8421, the clock or crystal attached to XTI must simultaneously satisfy the requirements of LRCK for both the input and output as follows:

- If the input is set to master,  $F_{si} \leq XTI/128$  and  $F_{so} \leq XTI/130$ .
- If the output is set to master,  $F_{so} \leq XTI/128$  and  $F_{si} \leq XTI/130$ .
- If both input and output are set to slave,  $XTI \geq 130 * [\text{maximum}(F_{si}, F_{so})]$ ,  $XTI/F_{si} < 3750$ , and  $XTI/F_{so} < 3750$ .



**Figure 10. Typical Connection Diagram for Crystal Circuit**

## 4.4 Time Division Multiplexing (TDM) Mode

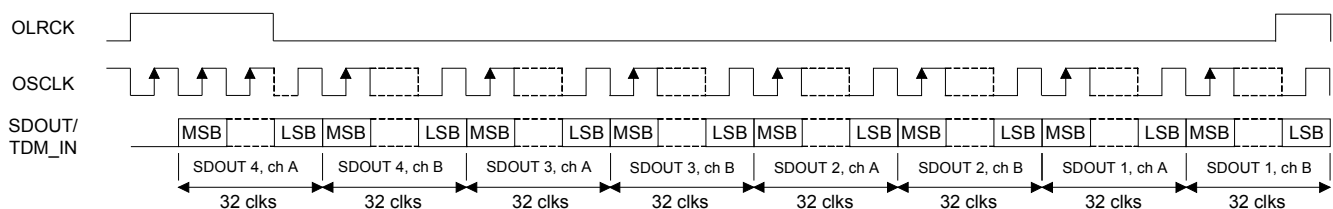
TDM Mode allows several CS8421 to be serially connected together allowing their corresponding SDOUT data to be multiplexed onto one line for input into a DSP or other TDM-capable multichannel device.

The CS8421 can operate in two TDM modes. The first mode consists of all of the CS8421's output ports set to slave, as shown in [Figure 13](#). The second mode consists of one CS8421 output port set to master and the remaining CS8421's output ports set to slave, as shown in [Figure 14](#).

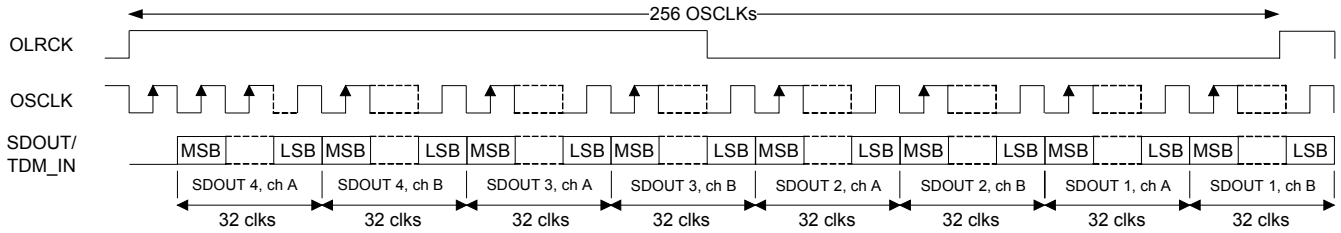
The TDM\_IN pin is used to input the data, while the SDOUT pin is used to output the data. The first CS8421 in the chain should have its TDM\_IN set to GND. Data is transmitted from SDOUT most significant bit first on the first OSCLK falling edge after an OLRCK transition and is valid on the rising edge of OSCLK.

In TDM Slave Mode, the number of channels that can be multiplexed to one serial data line depends on the output sampling rate. For Slave Mode, OSCLK must operate at  $N * 64 * F_{so}$ , where N is the number of CS8421's connected together. The maximum allowable OSCLK frequency is 24.576 MHz, so for  $F_{so} = 48$  kHz,  $N = 8$  (16 channels of serial audio data).

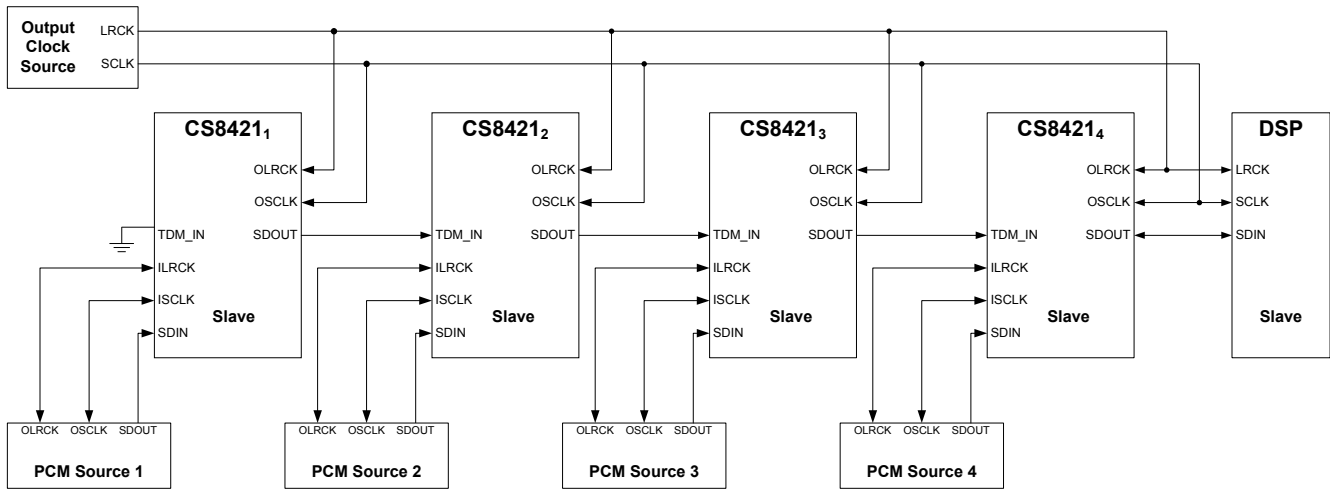
In TDM Master Mode, OSCLK operates at  $256 * F_{so}$ , which is equivalent to  $N = 4$ , so a maximum of 8 channels of digital audio can be multiplexed together. Note that for TDM Master Mode, MCLK must be at least  $256 * F_{so}$ , where  $F_{so} \leq 96$  kHz. OLRCK identifies the start of a new frame. Each time-slot is 32-bits wide, with the valid data sample left-justified within the time-slot. Valid data lengths are 16-, 20-, 24- or 32-bits. [Figures 11](#) and [12](#) show the interface format for Master and Slave TDM Modes with a 32-bit word-length.



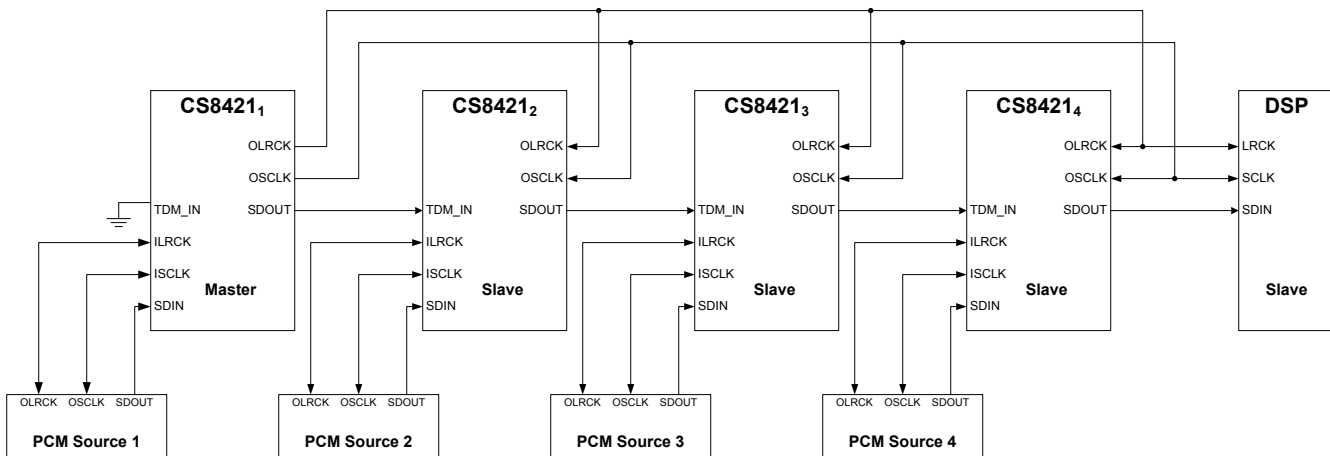
**Figure 11. TDM Slave Mode Timing Diagram**



**Figure 12. TDM Master Mode Timing Diagram**



**Figure 13. TDM Mode Configuration (All CS8421 Outputs are Slave)**



**Figure 14. TDM Mode Configuration (First CS8421 Output is Master, All Others are Slave)**

#### 4.5 Reset, Power-Down, and Start-Up

When  $\overline{\text{RST}}$  is low, the CS8421 enters a low-power mode, all internal states are reset, and the outputs are disabled. After  $\overline{\text{RST}}$  transitions from low to high, the part senses the resistor value on the configuration pins (MS\_SEL, SAIF, and SAOF) and sets the appropriate mode of operation. After the mode has been set (approximately 4  $\mu\text{s}$ ), the part is set to normal operation and all outputs are functional.

---

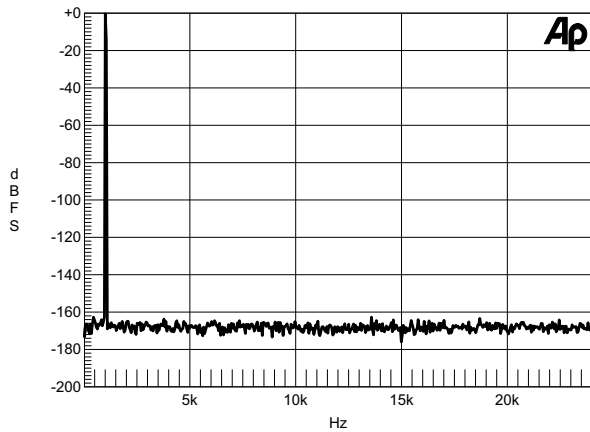
## 4.6 Power Supply, Grounding, and PCB Layout

The CS8421 operates from a  $V_D = +2.5\text{ V}$  and  $V_L = +3.3\text{ V}$  or  $+5.0\text{ V}$  supply. The supplies should be applied and removed together or the  $V_L$  supply should be applied first and removed last. Follow normal supply decoupling practices; see [Figure 6](#).

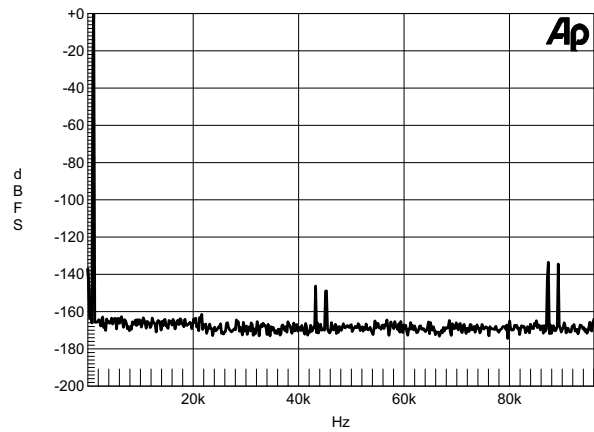
Extensive use of power and ground planes, ground-plane fill in unused areas, and surface-mount decoupling capacitors are recommended. Decoupling capacitors should be mounted on the same side of the board as the CS8421 to minimize inductance effects, and all decoupling capacitors should be as close to the CS8421 as possible. The pin of the configuration resistors not connected to  $MS\_SEL$ ,  $SAIF$ , and  $SAOF$  should be connected as close as possible to  $V_L$  or  $GND$ .

The CS8421 is available in the compact QFN package. The underside of the QFN package reveals a metal pad that serves as a thermal relief to provide for optimal heat dissipation. This pad must mate with an equally dimensioned copper pad on the PCB and must be electrically connected to ground. A series of vias should be used to connect this copper pad to one or more larger ground planes on other PCB layers.

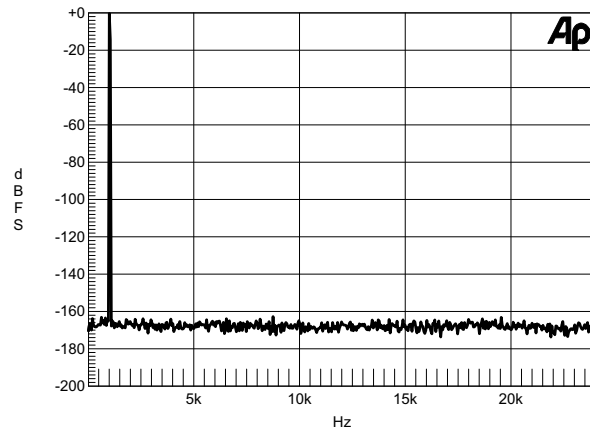
## 5. PERFORMANCE PLOTS



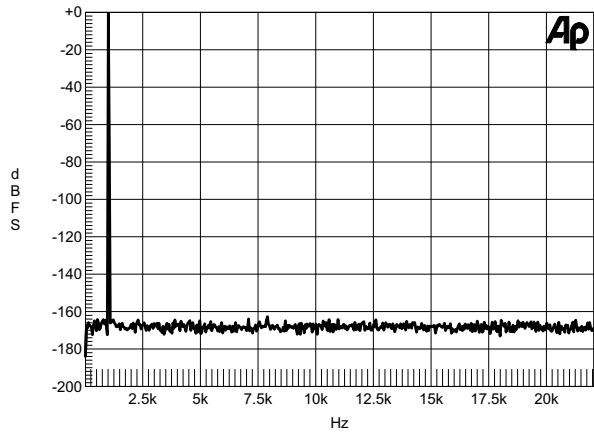
**Figure 15. Wideband FFT Plot (16k Points) 0 dBFS 1 kHz Tone, 48 kHz:48 kHz**



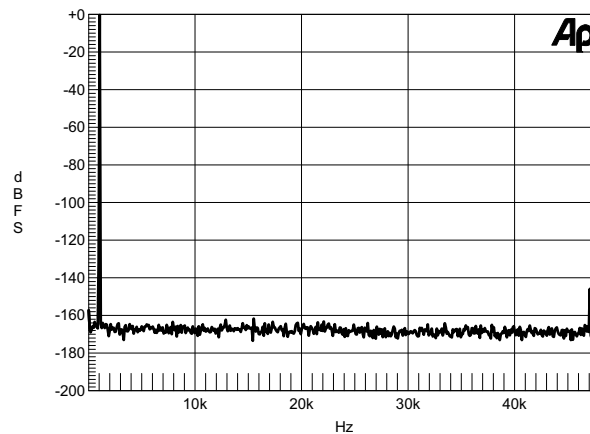
**Figure 16. Wideband FFT Plot (16k Points) 0 dBFS 1 kHz Tone, 44.1 kHz:192 kHz**



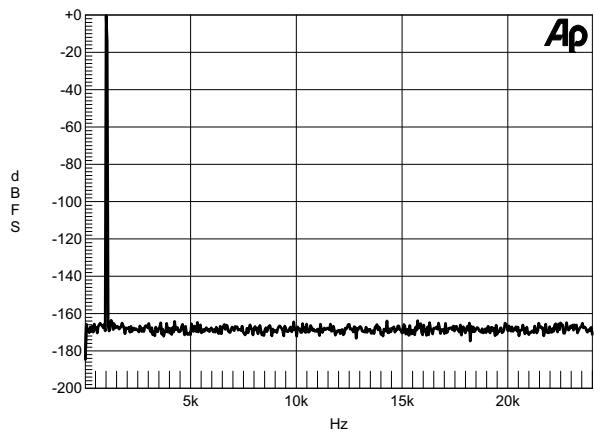
**Figure 17. Wideband FFT Plot (16k Points) 0 dBFS 1 kHz Tone, 44.1 kHz:48 kHz**



**Figure 18. Wideband FFT Plot (16k Points) 0 dBFS 1 kHz Tone, 48 kHz:44.1 kHz**



**Figure 19. Wideband FFT Plot (16k Points) 0 dBFS 1 kHz Tone, 48 kHz:96 kHz**



**Figure 20. Wideband FFT Plot (16k Points) 0 dBFS 1 kHz Tone, 96 kHz:48 kHz**



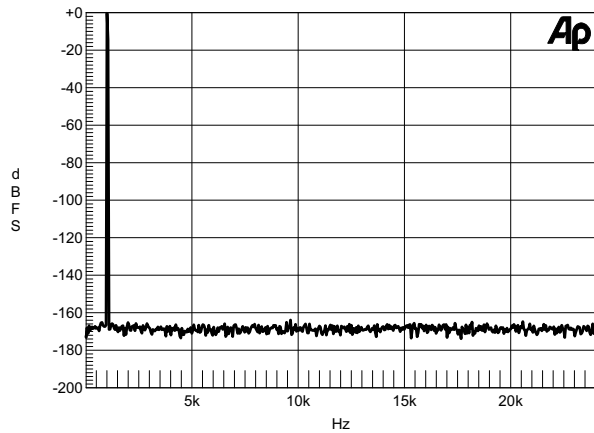


Figure 21. Wideband FFT Plot (16k Points) 0 dBFS 1 kHz Tone, 192 kHz:48 kHz

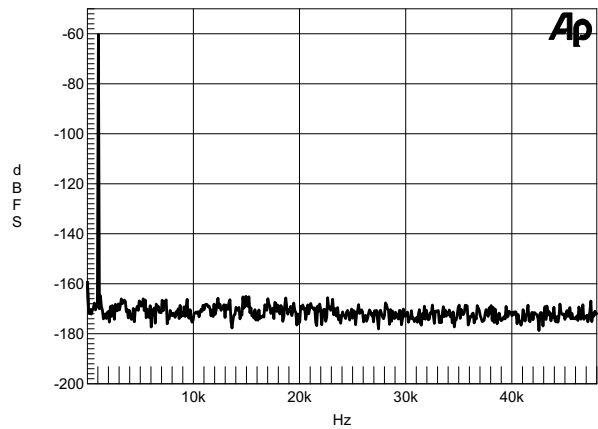


Figure 22. Wideband FFT Plot (16k Points) -60 dBFS 1 kHz Tone, 48 kHz:96 kHz

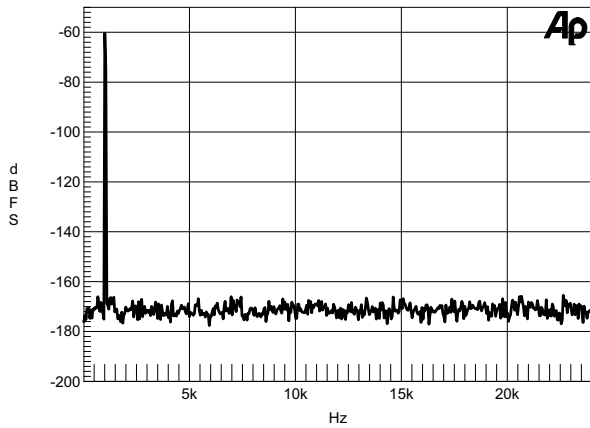


Figure 23. Wideband FFT Plot (16k Points) -60 dBFS 1 kHz Tone, 48 kHz:48 kHz

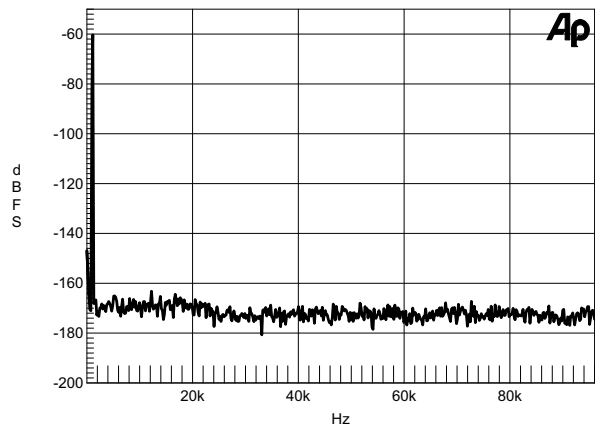


Figure 24. Wideband FFT Plot (16k Points) -60 dBFS 1 kHz Tone, 44.1 kHz:192 kHz

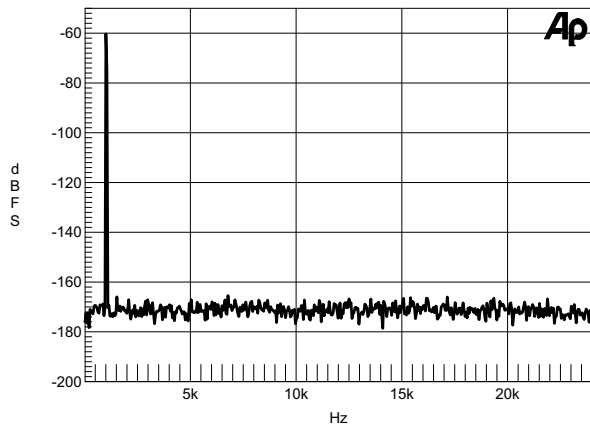


Figure 25. Wideband FFT Plot (16k Points) -60 dBFS 1 kHz Tone, 44.1 kHz:48 kHz

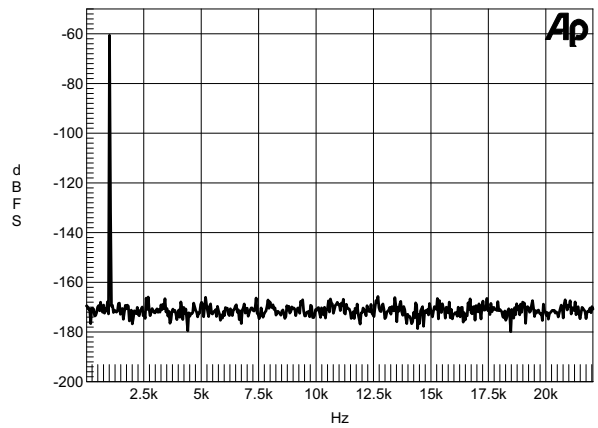
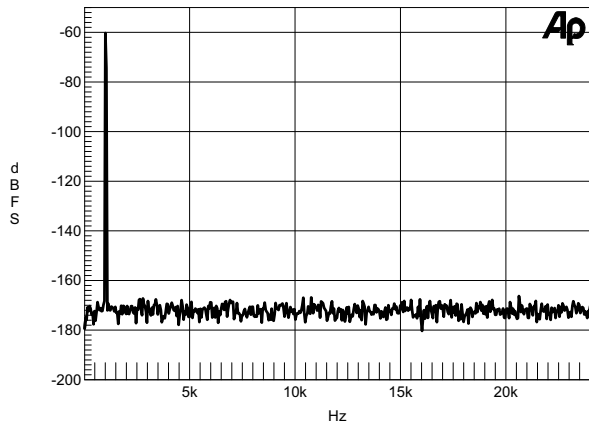
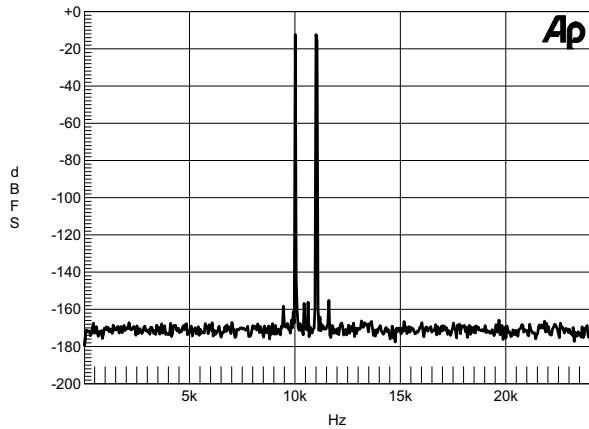


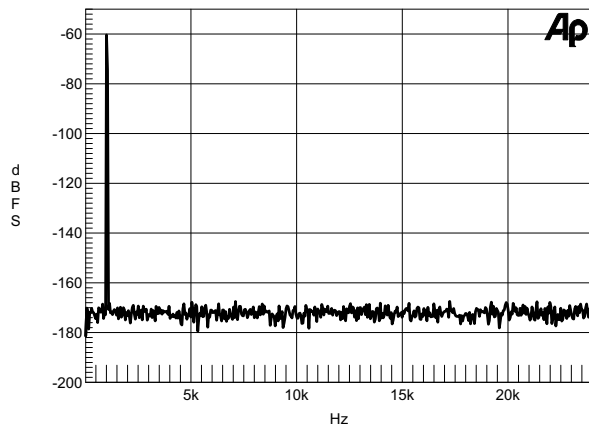
Figure 26. Wideband FFT Plot (16k Points) -60 dBFS 1 kHz Tone, 48 kHz:44.1 kHz



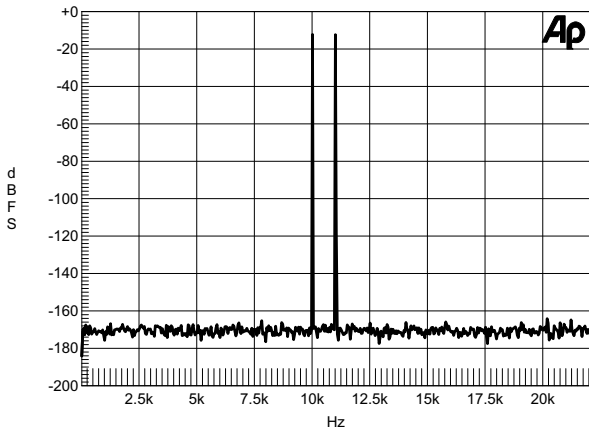
**Figure 27. Wideband FFT Plot (16k Points) -60 dBFS 1 kHz Tone, 96 kHz:48 kHz**



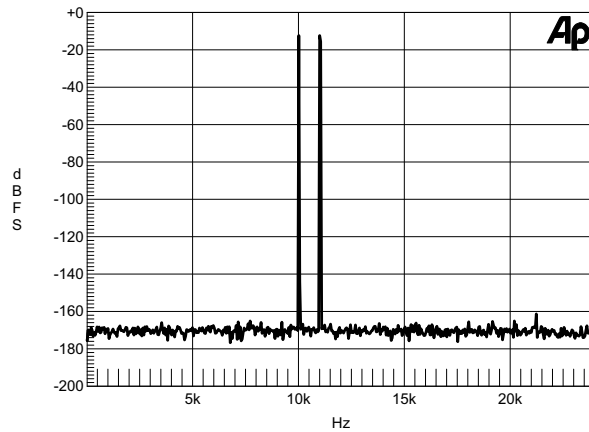
**Figure 28. IMD, 10 kHz and 11 kHz -7 dBFS, 96 kHz:48 kHz**



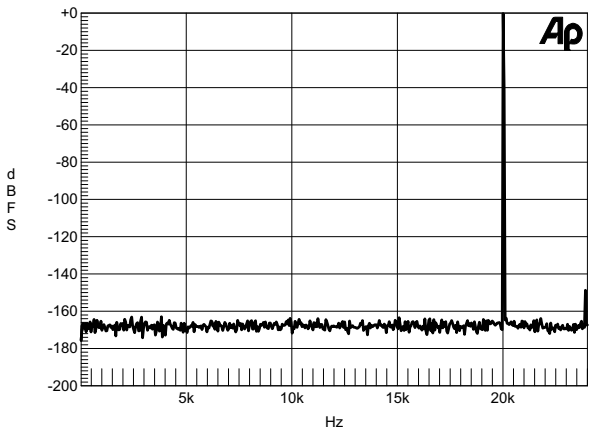
**Figure 29. Wideband FFT Plot (16k Points) -60 dBFS 1 kHz Tone, 192 kHz:48 kHz**



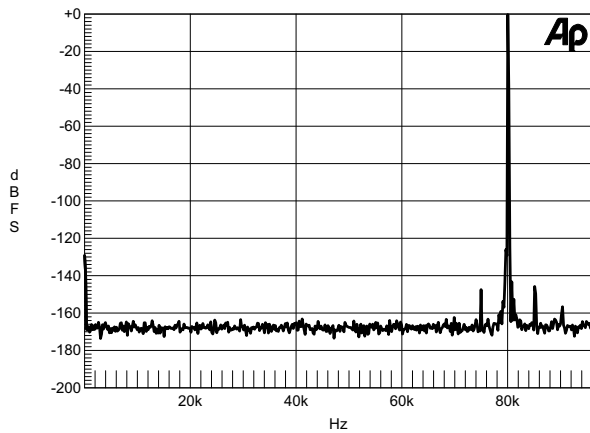
**Figure 30. IMD, 10 kHz and 11 kHz -7 dBFS, 48 kHz:44.1 kHz**



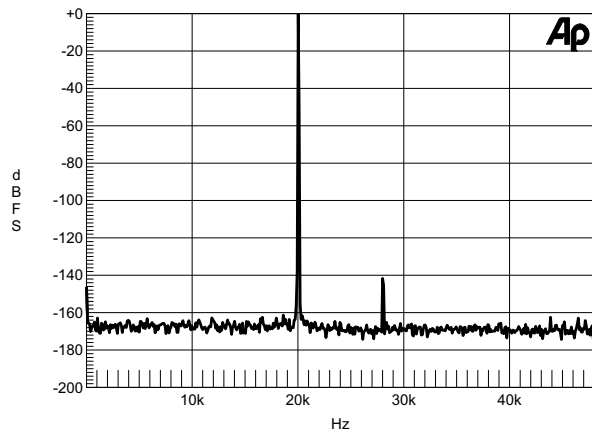
**Figure 31. IMD, 10 kHz and 11 kHz -7 dBFS, 44.1 kHz:48 kHz**



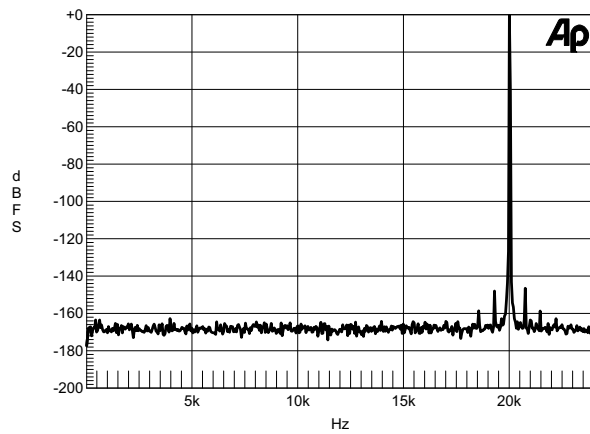
**Figure 32. Wideband FFT Plot (16k Points) 0 dBFS 20 kHz Tone, 44.1 kHz:48 kHz**



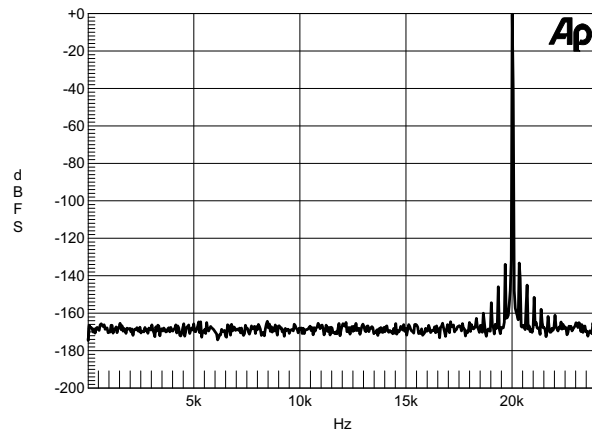
**Figure 33. Wideband FFT Plot (16k Points) 0 dBFS 80 kHz Tone, 192 kHz:192 kHz**



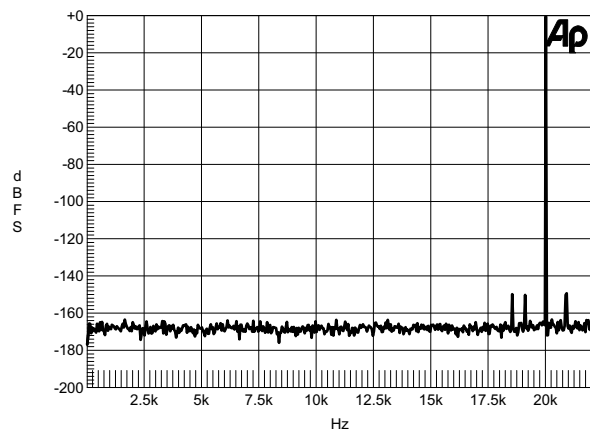
**Figure 34. Wideband FFT Plot (16k Points) 0 dBFS 20 kHz Tone, 48 kHz:96 kHz**



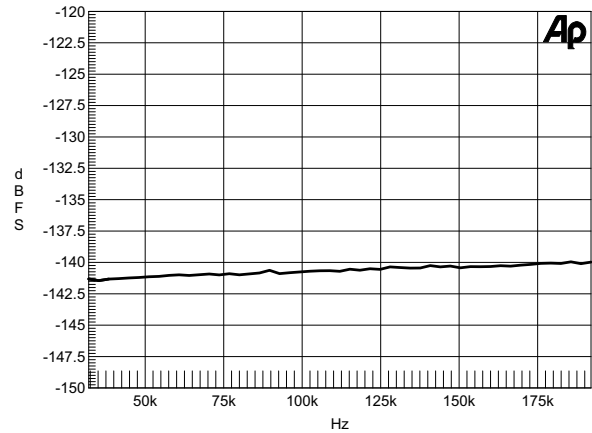
**Figure 35. Wideband FFT Plot (16k Points) 0 dBFS 20 kHz Tone, 48 kHz:48 kHz**



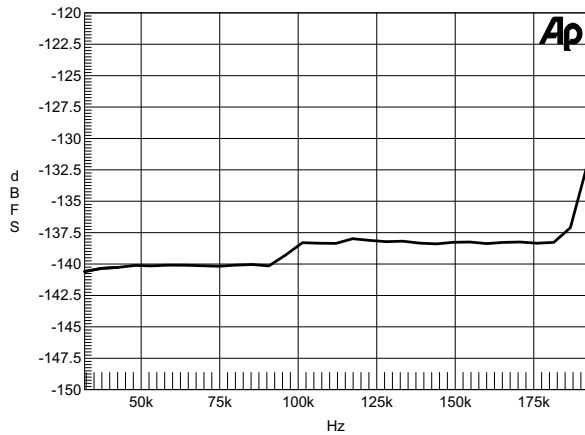
**Figure 36. Wideband FFT Plot (16k Points) 0 dBFS 20 kHz Tone, 96 kHz:48 kHz**



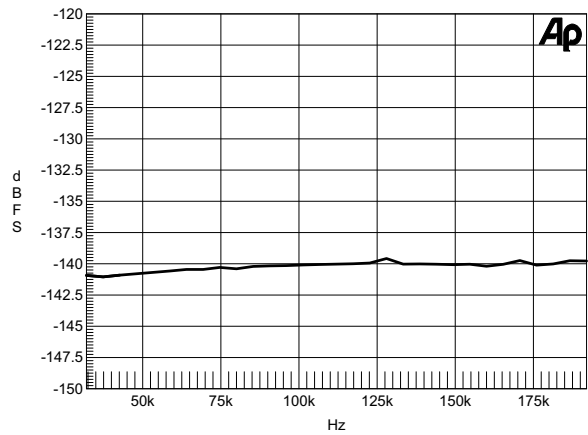
**Figure 37. Wideband FFT Plot (16k Points) 0 dBFS 20 kHz Tone, 48 kHz:44.1 kHz**



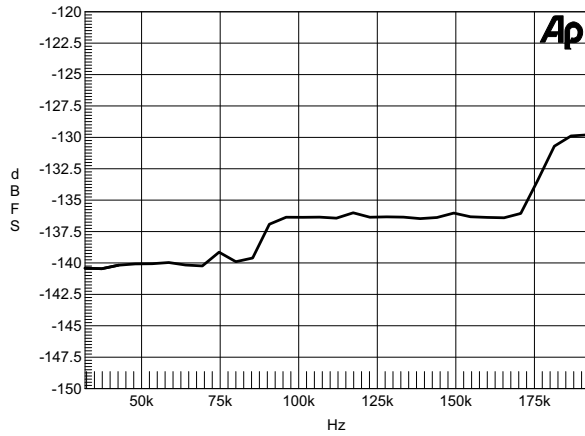
**Figure 38. THD+N vs. Output Sample Rate, 0 dBFS 1 kHz Tone, Fsi = 192 kHz**



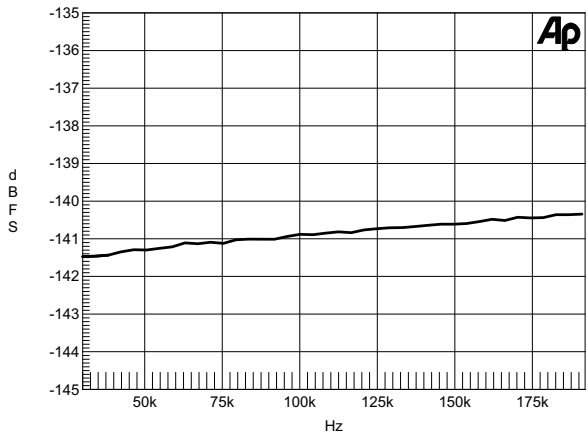
**Figure 39. THD+N vs. Output Sample Rate, 0 dBFS 1 kHz Tone, Fsi = 48 kHz**



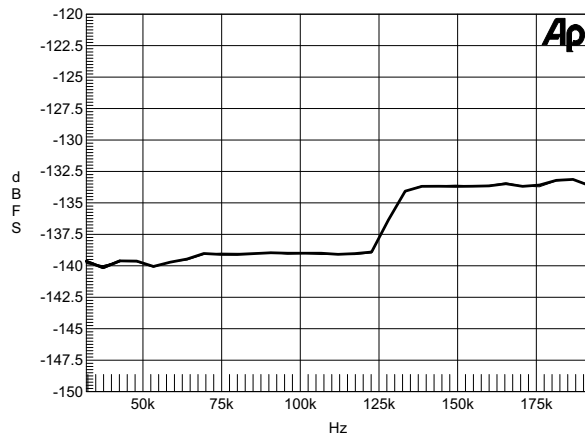
**Figure 40. THD+N vs. Output Sample Rate, 0 dBFS 1 kHz Tone, Fsi = 96 kHz**



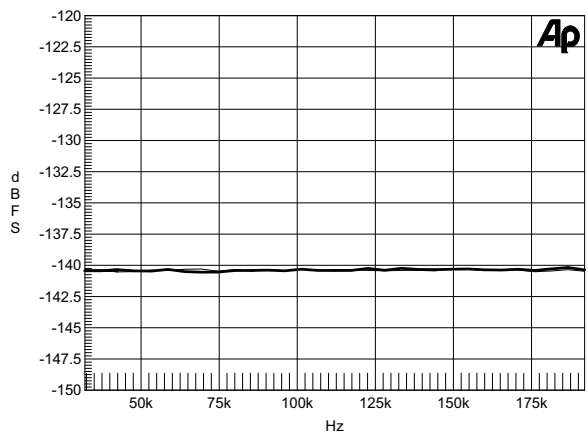
**Figure 41. THD+N vs. Output Sample Rate, 0 dBFS 1 kHz Tone, Fsi = 44.1 kHz**



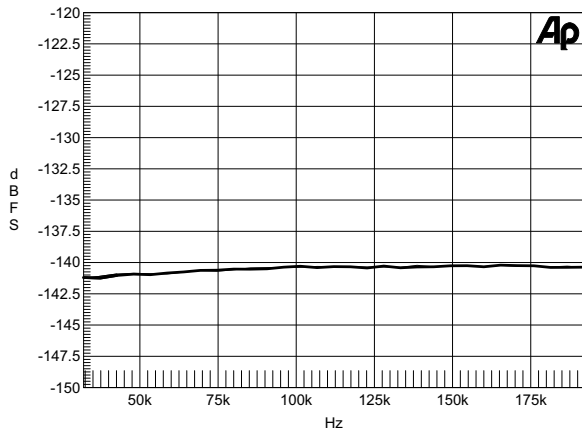
**Figure 42. Dynamic Range vs. Output Sample Rate, -60 dBFS 1 kHz Tone, Fsi = 192 kHz**



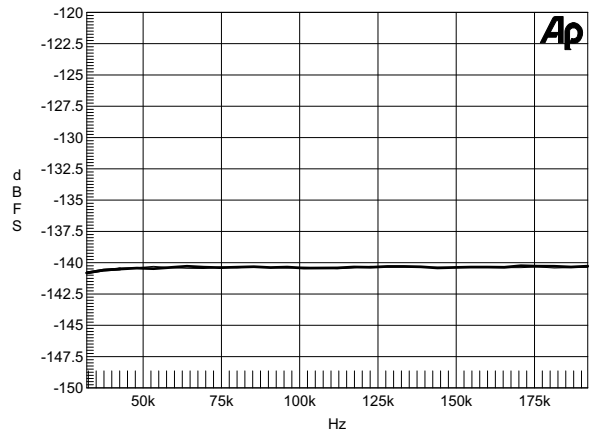
**Figure 43. THD+N vs. Output Sample Rate, 0 dBFS 1 kHz Tone, Fsi = 32 kHz**



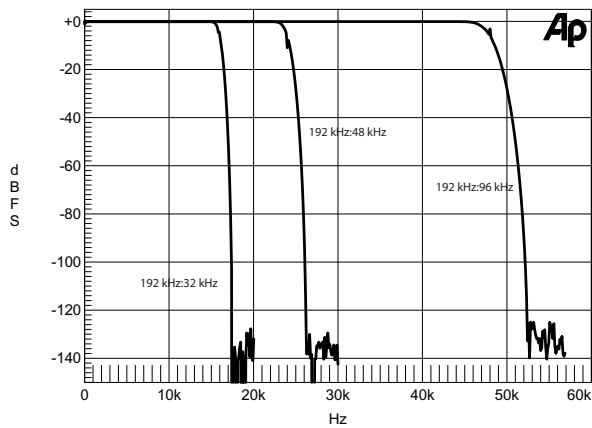
**Figure 44. Dynamic Range vs. Output Sample Rate, -60 dBFS 1 kHz Tone, Fsi = 32 kHz**



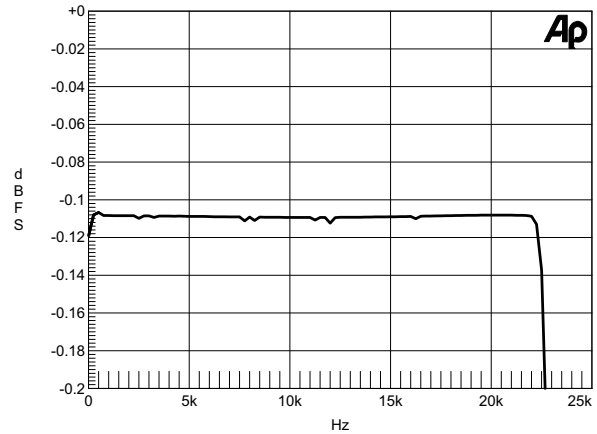
**Figure 45. Dynamic Range vs. Output Sample Rate, - 60 dBFS 1 kHz Tone, Fsi = 96 kHz**



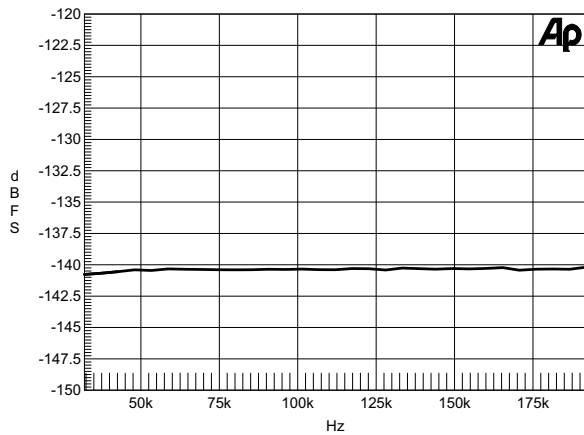
**Figure 46. Dynamic Range vs. Output Sample Rate, - 60 dBFS 1 kHz Tone, Fsi = 44.1 kHz**



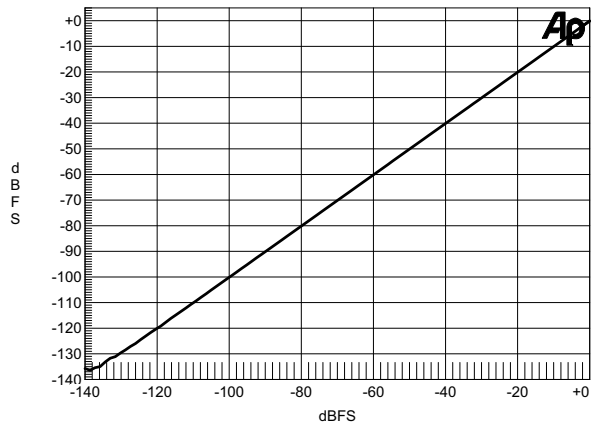
**Figure 47. Frequency Response with 0 dBFS Input**



**Figure 48. Passband Ripple, 192 kHz:48 kHz**



**Figure 49. Dynamic Range vs. Output Sample Rate, - 60 dBFS 1 kHz Tone, Fsi = 48 kHz**



**Figure 50. Linearity Error, 0 to -140 dBFS Input, 200 Hz Tone, 48 kHz:48 kHz**

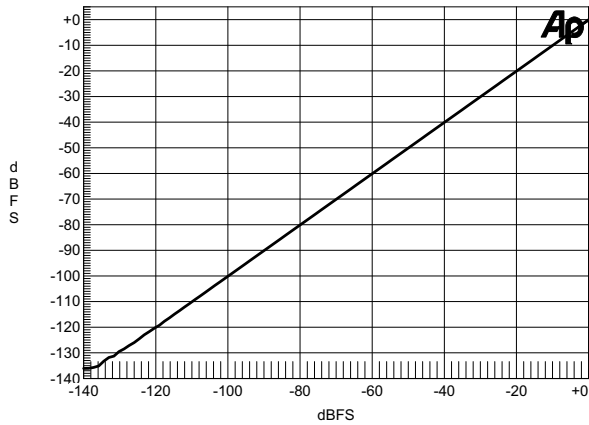


Figure 51. Linearity Error, 0 to -140 dBFS Input, 200 Hz Tone, 48 kHz:44.1 kHz

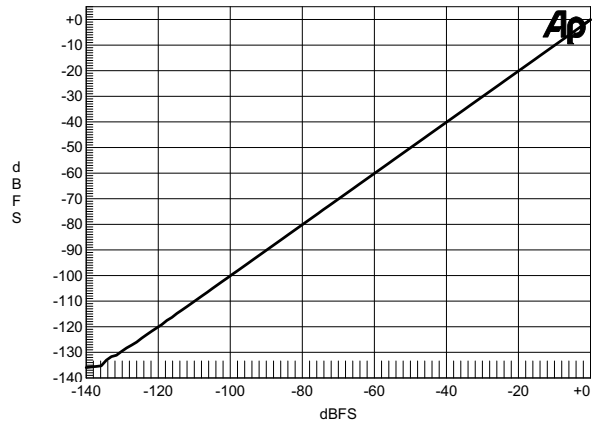


Figure 52. Linearity Error, 0 to -140 dBFS Input, 200 Hz Tone, 48 kHz:96 kHz

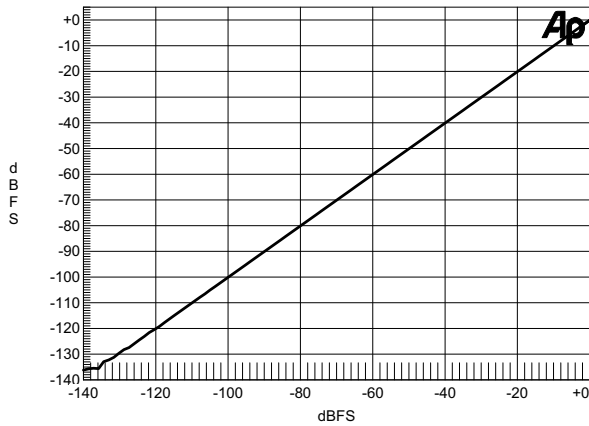


Figure 53. Linearity Error, 0 to -140 dBFS Input, 200 Hz Tone, 96 kHz:48 kHz

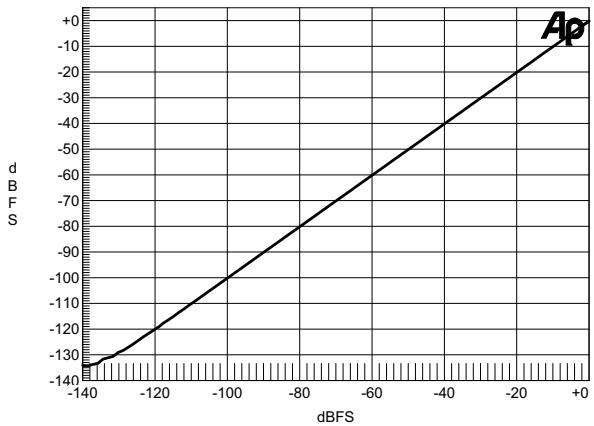


Figure 54. Linearity Error, 0 to -140 dBFS Input, 200 Hz Tone, 44.1 kHz:192 kHz

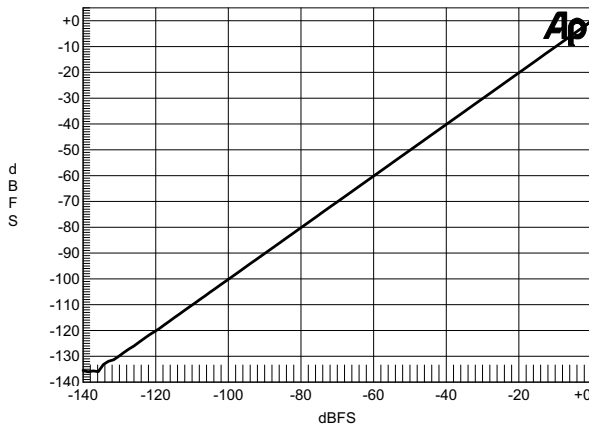


Figure 55. Linearity Error, 0 to -140 dBFS Input, 200 Hz Tone, 44.1 kHz:48 kHz

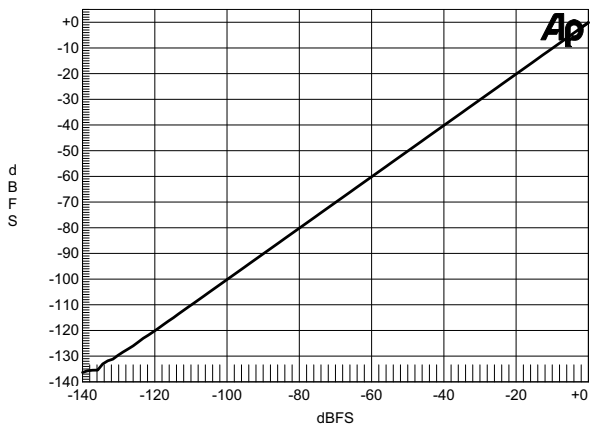


Figure 56. Linearity Error, 0 to -140 dBFS Input, 200 Hz Tone, 192 kHz:44.1 kHz

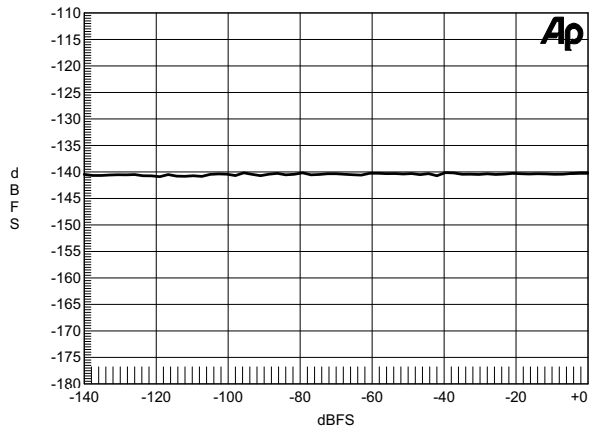


Figure 57. THD+N vs. Input Amplitude, 1 kHz Tone, 48 kHz:44.1 kHz

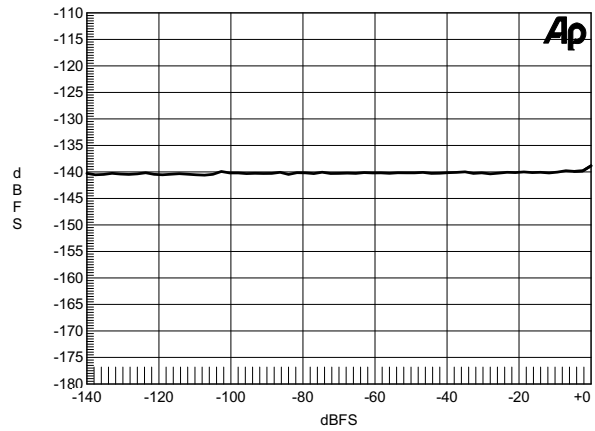


Figure 58. THD+N vs. Input Amplitude, 1 kHz Tone, 48 kHz:96 kHz

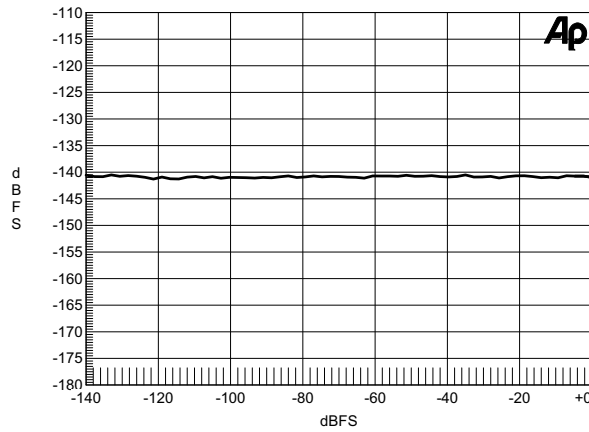


Figure 59. THD+N vs. Input Amplitude, 1 kHz Tone, 96 kHz:48 kHz

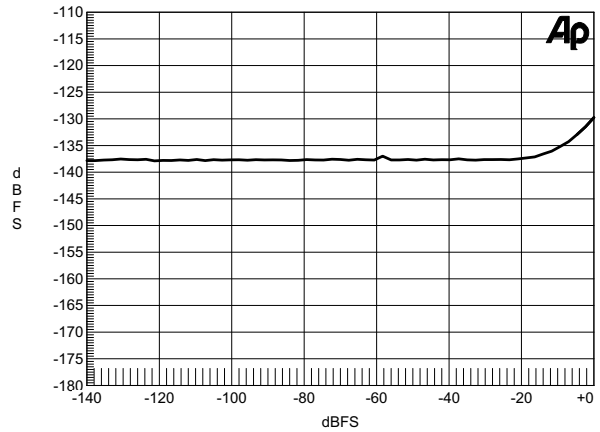


Figure 60. THD+N vs. Input Amplitude, 1 kHz Tone, 44.1 kHz:192 kHz

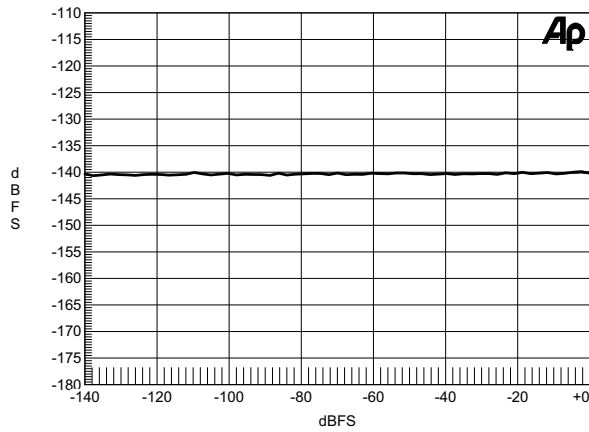


Figure 61. THD+N vs. Input Amplitude, 1 kHz Tone, 44.1 kHz:48 kHz

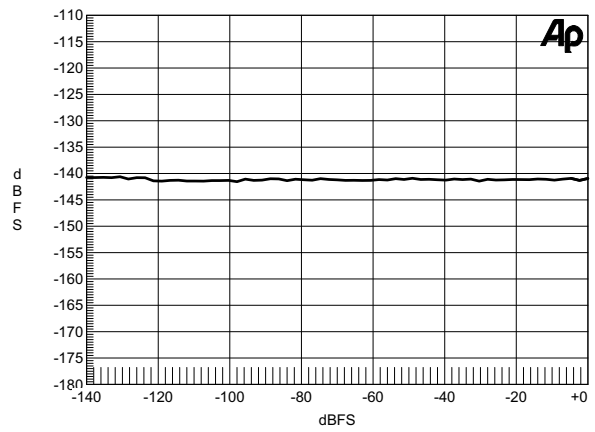
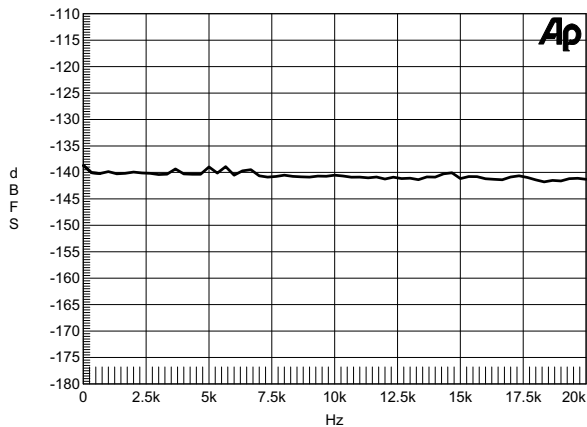
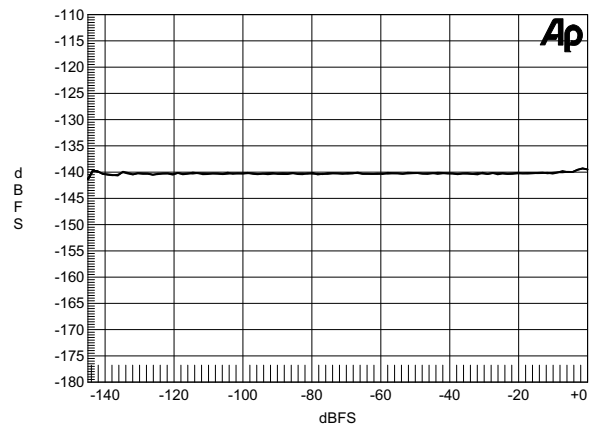


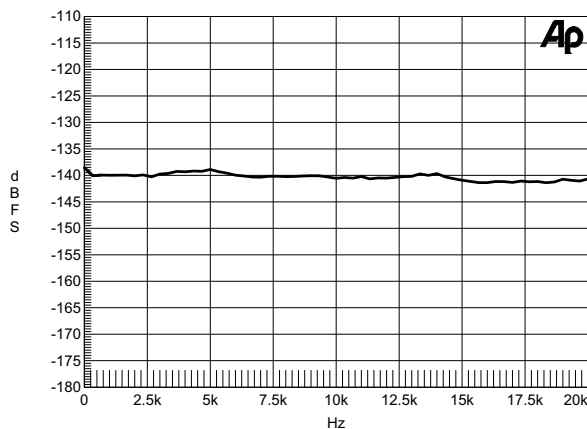
Figure 62. THD+N vs. Input Amplitude, 1 kHz Tone, 192 kHz:48 kHz



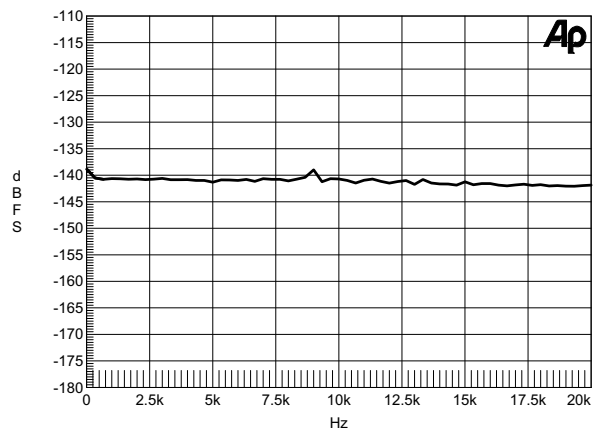
**Figure 63. THD+N vs. Frequency Input, 0 dBFS, 48 kHz:44.1 kHz**



**Figure 64. THD+N vs. Frequency Input, 0 dBFS, 48 kHz:96 kHz**



**Figure 65. THD+N vs. Frequency Input, 0 dBFS, 44.1 kHz:48 kHz**



**Figure 66. THD+N vs. Frequency Input, 0 dBFS, 96 kHz:48 kHz**

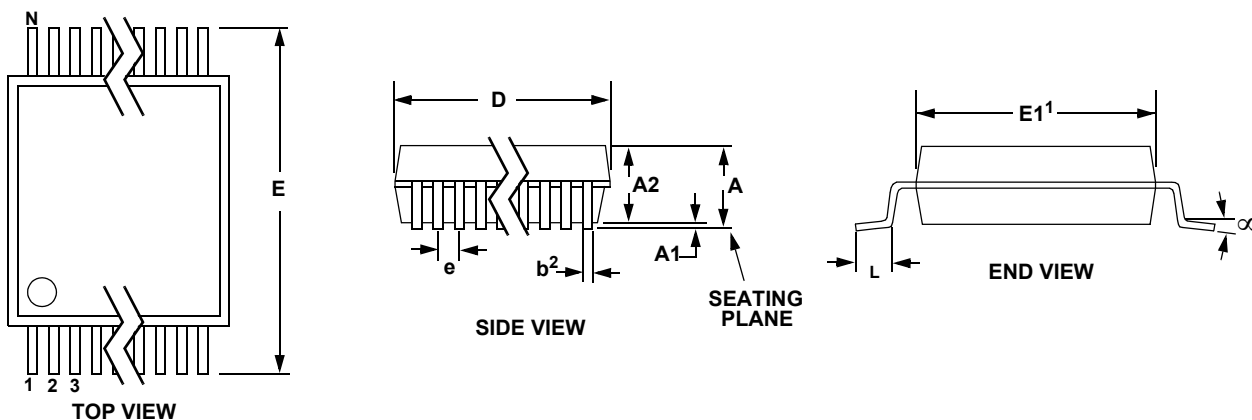
All performance plots represent typical performance. Measurements for all performance plots were taken under the following conditions, unless otherwise stated:

- VD = 2.5 V, VL = 3.3 V
- Serial Audio Input port set to slave
- Serial Audio Output port set to slave
- Input and output clocks and data are asynchronous
- XT1/XTO = 27 MHz
- Input signal = 1.000 kHz, 0 dBFS
- Measurement Bandwidth = 20 to (Fso/2) Hz
- Word Width = 24 Bits



## 6. PACKAGE DIMENSIONS

### 20L TSSOP (4.4 MM BODY) PACKAGE DRAWING



| DIM   | INCHES  |        |       | MILLIMETERS |       |      | NOTE |
|-------|---------|--------|-------|-------------|-------|------|------|
|       | MIN     | NOM    | MAX   | MIN         | NOM   | MAX  |      |
| A     | --      | --     | 0.043 | --          | --    | 1.10 |      |
| A1    | 0.002   | 0.004  | 0.006 | 0.05        | --    | 0.15 |      |
| A2    | 0.03346 | 0.0354 | 0.037 | 0.85        | 0.90  | 0.95 |      |
| b     | 0.00748 | 0.0096 | 0.012 | 0.19        | 0.245 | 0.30 | 2,3  |
| D     | 0.252   | 0.256  | 0.259 | 6.40        | 6.50  | 6.60 | 1    |
| E     | 0.248   | 0.2519 | 0.256 | 6.30        | 6.40  | 6.50 |      |
| E1    | 0.169   | 0.1732 | 0.177 | 4.30        | 4.40  | 4.50 | 1    |
| e     | --      | --     | 0.026 | --          | --    | 0.65 |      |
| L     | 0.020   | 0.024  | 0.028 | 0.50        | 0.60  | 0.70 |      |
| $\mu$ | 0°      | 4°     | 8°    | 0°          | 4°    | 8°   |      |

**JEDEC #: MO-153**

Controlling Dimension is Millimeters.

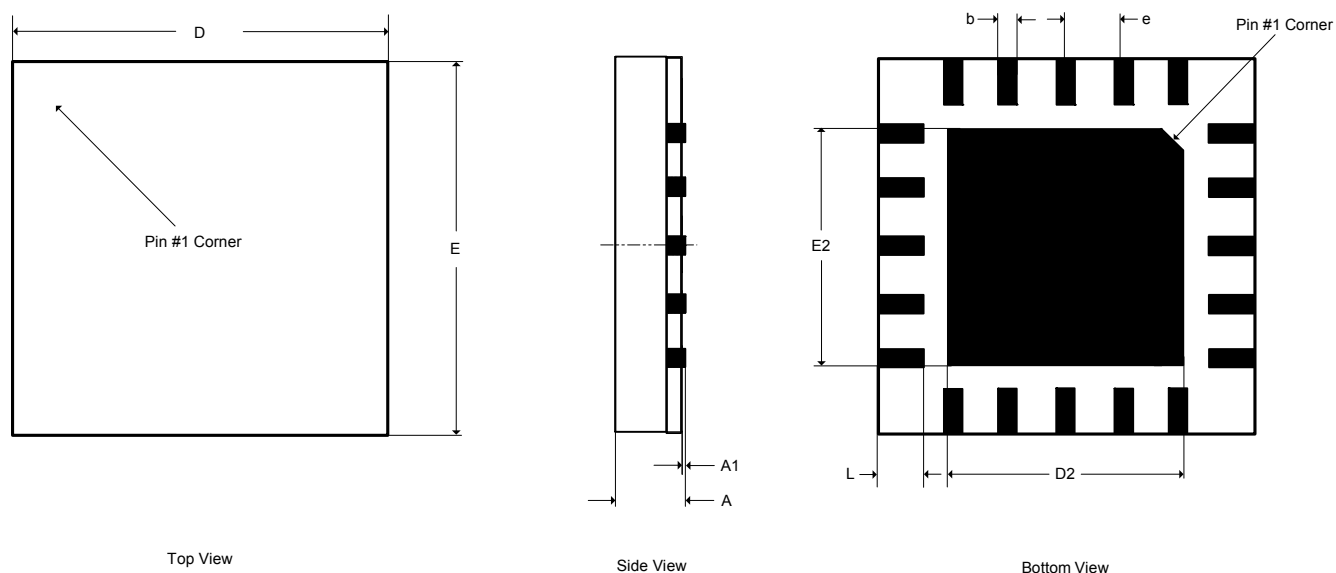
#### Notes:

1. "D" and "E1" are reference datums and do not include mold flash or protrusions, but do include mold mismatch and are measured at the parting line, mold flash or protrusions shall not exceed 0.20 mm per side.
2. Dimension "b" does not include dambar protrusion/intrusion. Allowable dambar protrusion shall be 0.13 mm total in excess of "b" dimension at maximum material condition. Dambar intrusion shall not reduce dimension "b" by more than 0.07 mm at least material condition.
3. These dimensions apply to the flat section of the lead between 0.10 and 0.25 mm from lead tips.

## TSSOP THERMAL CHARACTERISTICS

| Parameter                             | Symbol        | Min | Typ | Max | Units   |
|---------------------------------------|---------------|-----|-----|-----|---------|
| Junction to Ambient Thermal Impedance | $\theta_{JA}$ | -   | 48  | -   | °C/Watt |
|                                       |               | -   | 38  | -   | °C/Watt |

## 20-PIN QFN (5 × 5 MM BODY) PACKAGE DRAWING



| DIM | INCHES     |        |        | MILLIMETERS |      |      | NOTE |
|-----|------------|--------|--------|-------------|------|------|------|
|     | MIN        | NOM    | MAX    | MIN         | NOM  | MAX  |      |
| A   | --         | --     | 0.0394 | --          | --   | 1.00 | 1    |
| A1  | 0.0000     | --     | 0.0020 | 0.00        | --   | 0.05 | 1    |
| b   | 0.0091     | 0.0110 | 0.0130 | 0.23        | 0.28 | 0.33 | 1, 2 |
| D   | 0.1969 BSC |        |        | 5.00 BSC    |      |      | 1    |
| D2  | 0.1201     | 0.1220 | 0.1240 | 3.05        | 3.10 | 3.15 | 1    |
| E   | 0.1969 BSC |        |        | 5.00 BSC    |      |      | 1    |
| E2  | 0.1202     | 0.1221 | 0.1241 | 3.05        | 3.10 | 3.15 | 1    |
| e   | 0.0256 BSC |        |        | 0.65 BSC    |      |      | 1    |
| L   | 0.0197     | 0.0236 | 0.0276 | 0.50        | 0.60 | 0.70 | 1    |

JEDEC #: MO-220  
Controlling Dimension is Millimeters.

1. Dimensioning and tolerance per ASME Y 14.5M-1995.
2. Dimensioning lead width applies to the plated terminal and is measured between 0.23mm and 0.33mm from the terminal tip.

## QFN THERMAL CHARACTERISTICS

| Parameter                             | Symbol        | Min | Typ | Max | Units   |
|---------------------------------------|---------------|-----|-----|-----|---------|
| Junction to Ambient Thermal Impedance | $\theta_{JA}$ | -   | 128 | -   | °C/Watt |
|                                       |               | -   | 35  | -   | °C/Watt |

## 7. ORDERING INFORMATION

| Product | Description                               | Package  | Pb-Free | Temp Range     | Container     | Order#      |
|---------|---|----------|---------|----------------|---------------|-------------|
| CS8421  | 32-bit Asynchronous Sample Rate Converter | 20-TSSOP | YES     | -10° to +70°C  | Rail          | CS8421-CZZ  |
|         |   |          |         |                | Tape and Reel | CS8421-CZZR |
|         |   | 20-QFN   |         |                | Rail          | CS8421-CNZ  |
|         |   |          |         |                | Tape and Reel | CS8421-CNZR |
|         |   | 20-TSSOP |         | Rail           | CS8421-DZZ    |             |
|         |   |          |         | Tape and Reel  | CS8421-DZZR   |             |
|         |   | 20-TSSOP |         | -40° to +105°C | Rail          | CS8421-EZZ  |
|         |   |          |         |                | Tape and Reel | CS8421-EZZR |
|         |   | 20-QFN   |         |                | Rail          | CS8421-ENZ  |
|         |   |          |         |                | Tape and Reel | CS8421-ENZR |
| CDB8421 | Evaluation Board for CS8421               | -        | -       |                | -             | CDB8421     |

## 8. REVISION HISTORY

| Release       | Changes   |
|---------------|---|
| F5<br>JUL '10 | Added -40° to +105°C Automotive grade to feature list on page 23.<br>Added Ambient Operating Temperature entry for '-EZ' and '-ENZ' in "Specified Operating Conditions" on page 9.<br>Added entries for CS8421-EZZ/ENZ and CS8421-EZZR/ENZR in "Ordering Information" on page 35. |
| F6<br>JUL '12 | Added note regarding the SDOUT pin in Figure 5 and Figure 6.  |
| F7<br>AUG '15 | Updated power supply sequencing in Section 4.6 Power Supply, Grounding, and PCB Layout.<br>Updated legal text.  |

---

## Contacting Cirrus Logic Support

For all product questions and inquiries, contact a Cirrus Logic Sales Representative.

To find the one nearest to you, go to [www.cirrus.com](http://www.cirrus.com).

---

### IMPORTANT NOTICE

The products and services of Cirrus Logic International (UK) Limited; Cirrus Logic, Inc.; and other companies in the Cirrus Logic group (collectively either "Cirrus Logic" or "Cirrus") are sold subject to Cirrus Logic's terms and conditions of sale supplied at the time of order acknowledgment, including those pertaining to warranty, indemnification, and limitation of liability. Software is provided pursuant to applicable license terms. Cirrus Logic reserves the right to make changes to its products and specifications or to discontinue any product or service without notice. Customers should therefore obtain the latest version of relevant information from Cirrus Logic to verify that the information is current and complete. Testing and other quality control techniques are utilized to the extent Cirrus Logic deems necessary. Specific testing of all parameters of each device is not necessarily performed. In order to minimize risks associated with customer applications, the customer must use adequate design and operating safeguards to minimize inherent or procedural hazards. Cirrus Logic is not liable for applications assistance or customer product design. The customer is solely responsible for its selection and use of Cirrus Logic products.

CERTAIN APPLICATIONS USING SEMICONDUCTOR PRODUCTS MAY INVOLVE POTENTIAL RISKS OF DEATH, PERSONAL INJURY, OR SEVERE PROPERTY OR ENVIRONMENTAL DAMAGE ("CRITICAL APPLICATIONS"). CIRRUS LOGIC PRODUCTS ARE NOT DESIGNED, AUTHORIZED OR WARRANTED FOR USE IN PRODUCTS SURGICALLY IMPLANTED INTO THE BODY, AUTOMOTIVE SAFETY OR SECURITY DEVICES, NUCLEAR SYSTEMS, LIFE SUPPORT PRODUCTS OR OTHER CRITICAL APPLICATIONS. INCLUSION OF CIRRUS LOGIC PRODUCTS IN SUCH APPLICATIONS IS UNDERSTOOD TO BE FULLY AT THE CUSTOMER'S RISK AND CIRRUS LOGIC DISCLAIMS AND MAKES NO WARRANTY, EXPRESS, STATUTORY OR IMPLIED, INCLUDING THE IMPLIED WARRANTIES OF MERCHANTABILITY AND FITNESS FOR PARTICULAR PURPOSE, WITH REGARD TO ANY CIRRUS LOGIC PRODUCT THAT IS USED IN SUCH A MANNER. IF THE CUSTOMER OR CUSTOMER'S CUSTOMER USES OR PERMITS THE USE OF CIRRUS LOGIC PRODUCTS IN CRITICAL APPLICATIONS, CUSTOMER AGREES, BY SUCH USE, TO FULLY INDEMNIFY CIRRUS LOGIC, ITS OFFICERS, DIRECTORS, EMPLOYEES, DISTRIBUTORS AND OTHER AGENTS FROM ANY AND ALL LIABILITY, INCLUDING ATTORNEYS' FEES AND COSTS, THAT MAY RESULT FROM OR ARISE IN CONNECTION WITH THESE USES.

This document is the property of Cirrus Logic and by furnishing this information, Cirrus Logic grants no license, express or implied, under any patents, mask work rights, copyrights, trademarks, trade secrets or other intellectual property rights. Any provision or publication of any third party's products or services does not constitute Cirrus Logic's approval, license, warranty or endorsement thereof. Cirrus Logic gives consent for copies to be made of the information contained herein only for use within your organization with respect to Cirrus Logic integrated circuits or other products of Cirrus Logic, and only if the reproduction is without alteration and is accompanied by all associated copyright, proprietary and other notices and conditions (including this notice). This consent does not extend to other copying such as copying for general distribution, advertising or promotional purposes, or for creating any work for resale. This document and its information is provided "AS IS" without warranty of any kind (express or implied). All statutory warranties and conditions are excluded to the fullest extent possible. No responsibility is assumed by Cirrus Logic for the use of information herein, including use of this information as the basis for manufacture or sale of any items, or for infringement of patents or other rights of third parties. Cirrus Logic, Cirrus, the Cirrus Logic logo design, and SoundClear are among the trademarks of Cirrus Logic. Other brand and product names may be trademarks or service marks of their respective owners.

Copyright © 2004–2015 Cirrus Logic, Inc. All rights reserved.

# Mouser Electronics

Authorized Distributor

Click to View Pricing, Inventory, Delivery & Lifecycle Information:

[Cirrus Logic:](#)

[CDB8421](#) [CS8421-CZZ](#) [CS8421-DZZ](#) [CS8421-EZZR](#) [CS8421-CNZ](#) [CS8421-CNZR](#) [CS8421-EZZ](#) [CS8421-CZZR](#)  
[CS8421-DZZR](#)



**Стандарт  
Электрон  
Связь**

Мы молодая и активно развивающаяся компания в области поставок электронных компонентов. Мы поставляем электронные компоненты отечественного и импортного производства напрямую от производителей и с крупнейших складов мира.

Благодаря сотрудничеству с мировыми поставщиками мы осуществляем комплексные и плановые поставки широчайшего спектра электронных компонентов.

Собственная эффективная логистика и склад в обеспечивает надежную поставку продукции в точно указанные сроки по всей России.

Мы осуществляем техническую поддержку нашим клиентам и предпродажную проверку качества продукции. На все поставляемые продукты мы предоставляем гарантию .

Осуществляем поставки продукции под контролем ВП МО РФ на предприятия военно-промышленного комплекса России , а также работаем в рамках 275 ФЗ с открытием отдельных счетов в уполномоченном банке. Система менеджмента качества компании соответствует требованиям ГОСТ ISO 9001.

Минимальные сроки поставки, гибкие цены, неограниченный ассортимент и индивидуальный подход к клиентам являются основой для выстраивания долгосрочного и эффективного сотрудничества с предприятиями радиоэлектронной промышленности, предприятиями ВПК и научно-исследовательскими институтами России.

С нами вы становитесь еще успешнее!

**Наши контакты:**

**Телефон:** +7 812 627 14 35

**Электронная почта:** [sales@st-electron.ru](mailto:sales@st-electron.ru)

**Адрес:** 198099, Санкт-Петербург,  
Промышленная ул, дом № 19, литера Н,  
помещение 100-Н Офис 331