

Getting started with the XDPL8221 reference board using .dp Vision software

XDP™ digital power

About this document

Scope and purpose

The purpose of this document is to give a quick guide to operation of the XDPL8221 reference board for all power classes of LED lighting applications, and how to use the .dp Vision software to program the operating parameters of the digital controller XDPL8221.

Intended audience

This document is intended for anyone who wants to evaluate the XDPL8221 reference design for LED lighting.

Table of contents

About this document	1
Table of contents	1
1 Tools	2
1.1 Required hardware and software tools.....	2
2 Getting started	3
2.1 Hardware connection.....	3
2.2 Parameter configuration.....	5
Revision history.....	9

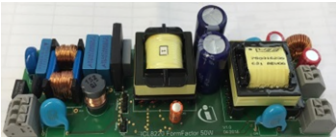

Tools

1 Tools

1.1 Required hardware and software tools

The required hardware and software tools are listed in **Table 1**. Please order all the hardware tools and download and install all the software tools.

Table 1 Required hardware and software tools for getting started

Name	Ordering link	Description	Ordering content
Please order all the hardware tools. Click on the links below:			
<p>XDPL8221 reference board</p> 	<p>Click on the link: device-Demo</p>	<p>XDPL8221 reference board for LED lighting</p>	<p>XDPL8221 reference board Driver for LED lighting Programming cable To connect the XDPL8221 reference board with the .dp Interface Gen2</p>
<p>.dp Interface Gen2</p> 	<p>Click on the link: IF-BOARD.DP-GEN2</p>	<p>Interface board to control XDPL8221 from PC/notebook</p>	<p>.dp Interface Gen2 Interface for programming the XDPL8221 digital controller USB cable To connect the .dp Interface Gen2 with a PC</p>
Please download and install all the software tools. Click on the links below:			
<p>Graphic User Interface (GUI) for read and write access to the parameters in the OTP</p>	<p>Click on the link and follow the instruction in the right column: .dp Vision</p>	<p>Accept the mentioned terms and conditions Click “Run” Install “dp.vision”</p>	<p>.dp Vision installer (*.msi)</p>
<p>dpVision_folder_set-up Copies auxiliary files including the parameters .csv file to the respective directory structure</p>	<p>Click on the link and follow the instruction in the next column: REF-XDPL8221-U50W_dpVision_folder_set-up</p>	<p>On the website of the respective board, choose and open the appropriate .zip file (e.g. for the 50 W reference board, choose “REF-XDPL8221-U50W_dpvision_folder_set-up” Double-click the *.msi file to install</p>	<p>XDPL™ digital power – dp Vision set-up with the following documents: XDPL8221 parameters .csv file XDPL images file XDPL8221 documentation files XDPL system simulation and design creation tool .dp Interface Gen2 firmware</p>

Getting started

2 Getting started

Attention: *The instructions of this manual work without V AC connection.*

Attention: *Before you connect the reference board to the mains, pay attention to the safety hints in the recent “REF-XDPL8221-U50W Engineering report Vx.x” thoroughly. Incorrect use of the reference board could be dangerous, and even life-threatening!*

2.1 Hardware connection

Connect the .dp Interface Gen2 to a notebook/PC with the USB cable.

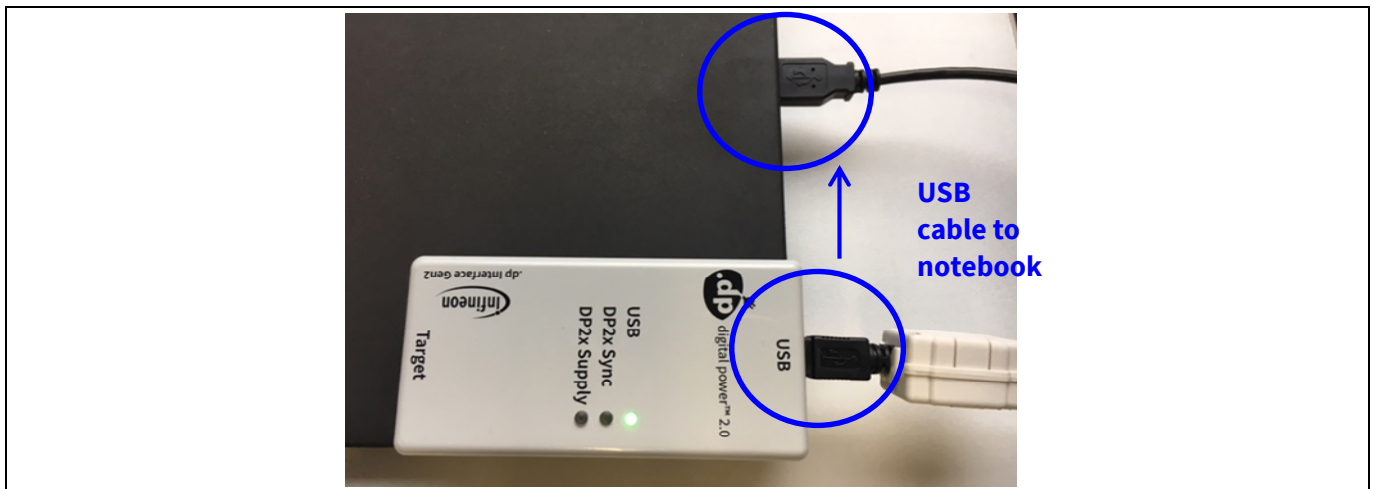


Figure 1 Connection between .dp Interface Gen2 and notebook

Note: *Sometimes the detection of the .dp Interface Gen2 fails on USB3.0 ports. Therefore the use of a USB2.0 port might be necessary (which can be provided by an external USB2.0 hub if the machine only offers USB3.0 ports).*

Getting started with the XDPL8221 reference board using .dp Vision software

Getting started

Connect the .dp Interface Gen2 to the XDPL8221 reference board with the programming cable.

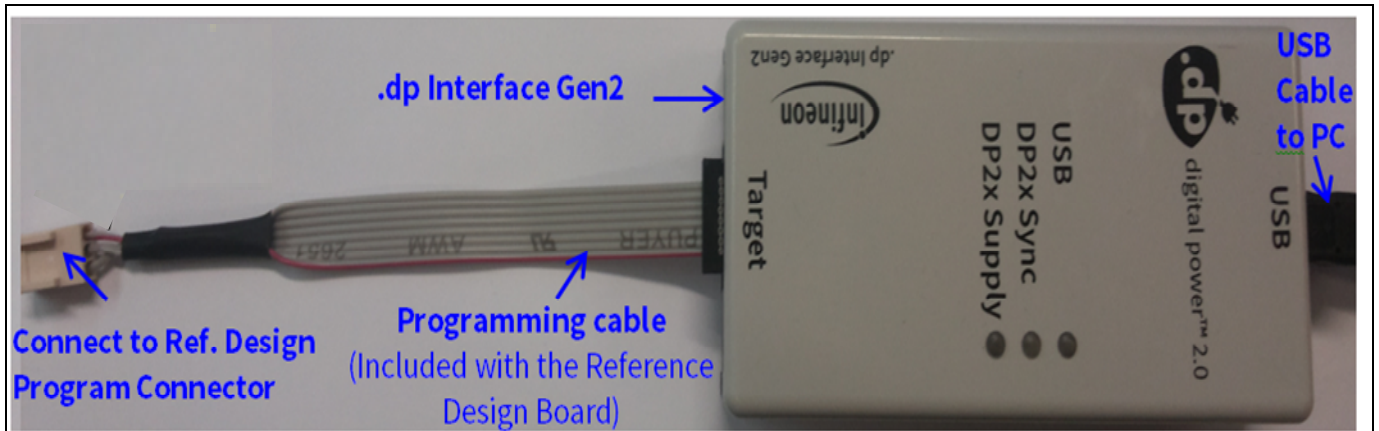


Figure 2 .dp Interface Gen2 connection

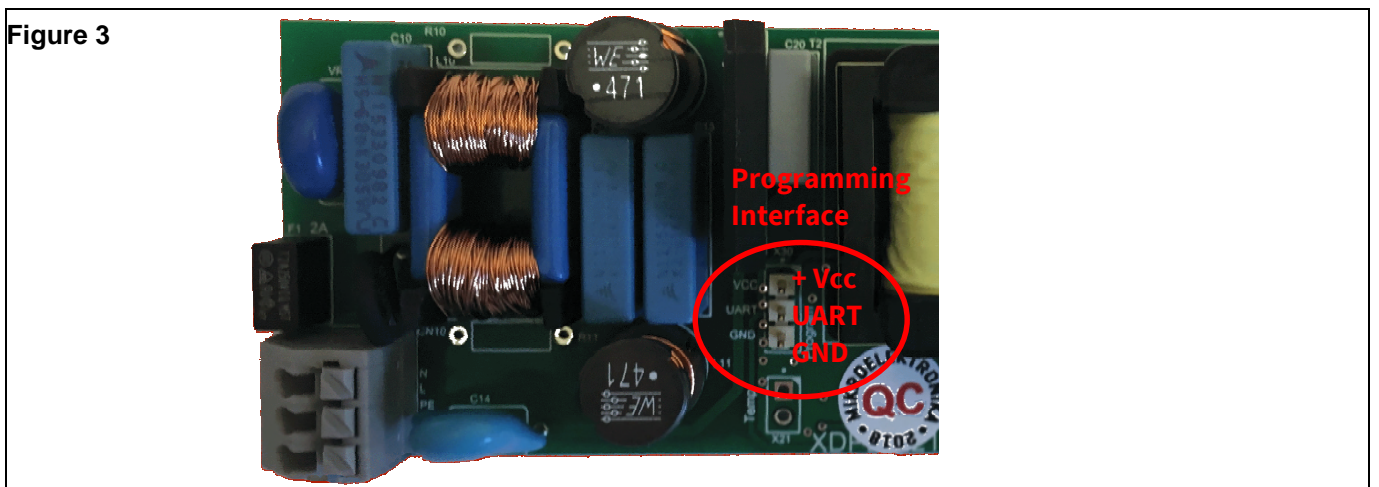


Figure 4 Connection between the .dp Interface Gen2 and the XDPL8221 reference board

Note: Please ensure that the connector of the programming cable is plugged in correctly: the colored wire indicates Pin 1 and should be connected to the V_{cc} pin on the XDPL8221 reference board.

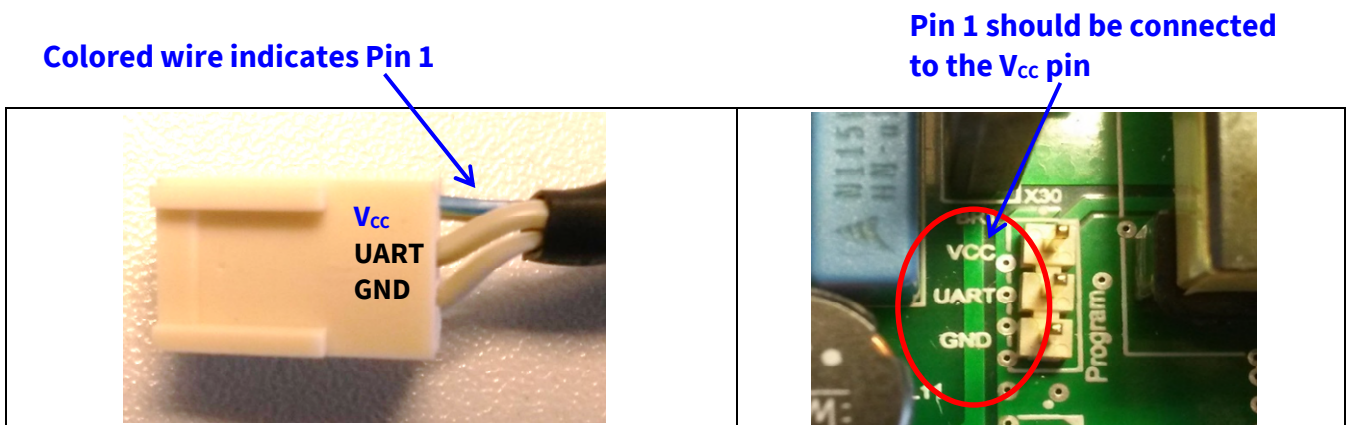


Figure 5 Program connector
V_{cc}, UART, GND

Figure 5 Programming interface
V_{cc}, UART, GND

Getting started

2.2 Parameter configuration

Start the .dp Vision program by clicking the “.dp Vision” shortcut on the desktop. The screen shown in Figure 6 will appear.

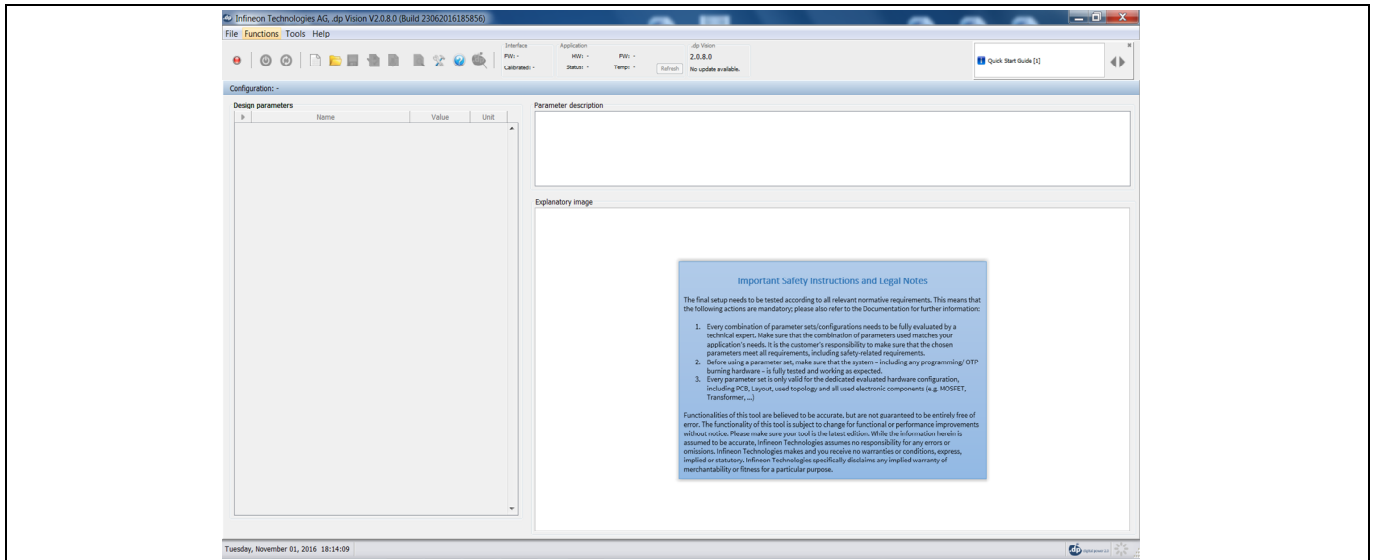


Figure 6 Starting .dp Vision

Load the XDPL8221 parameters configuration file (*.csv) in the folder (HOME) \Infineon Technologies AG\ .dp vision\Parameters as shown in Figure 8. Please select the corresponding file (e.g., for a 50 W board choose the “XDPL8221_FWvx.x.x_50W” file).

Select the appropriate .csv file to open

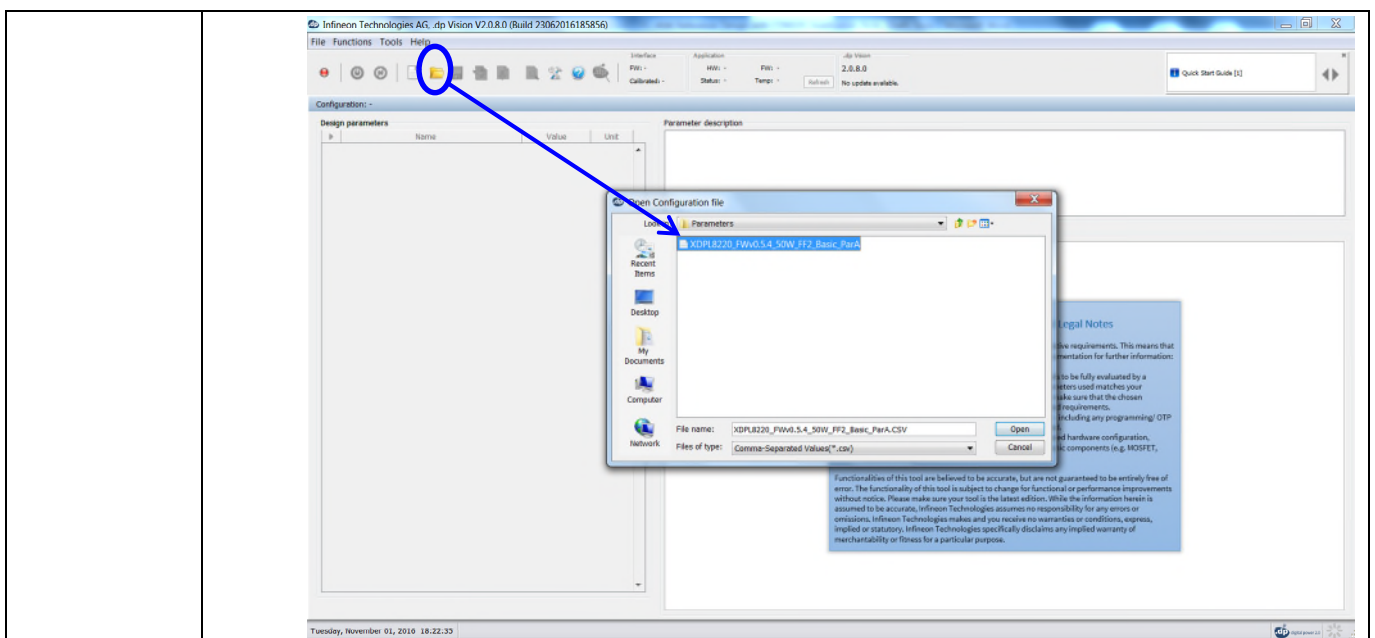


Figure 7 Load the .csv file

After loading the parameters .csv file, a list of XDPL8221 configurable parameters will show (see the box on the left in Figure 8). These values can be modified by users and will turn blue.

Getting started

List of configurable parameters

Click on the message bar for detailed information

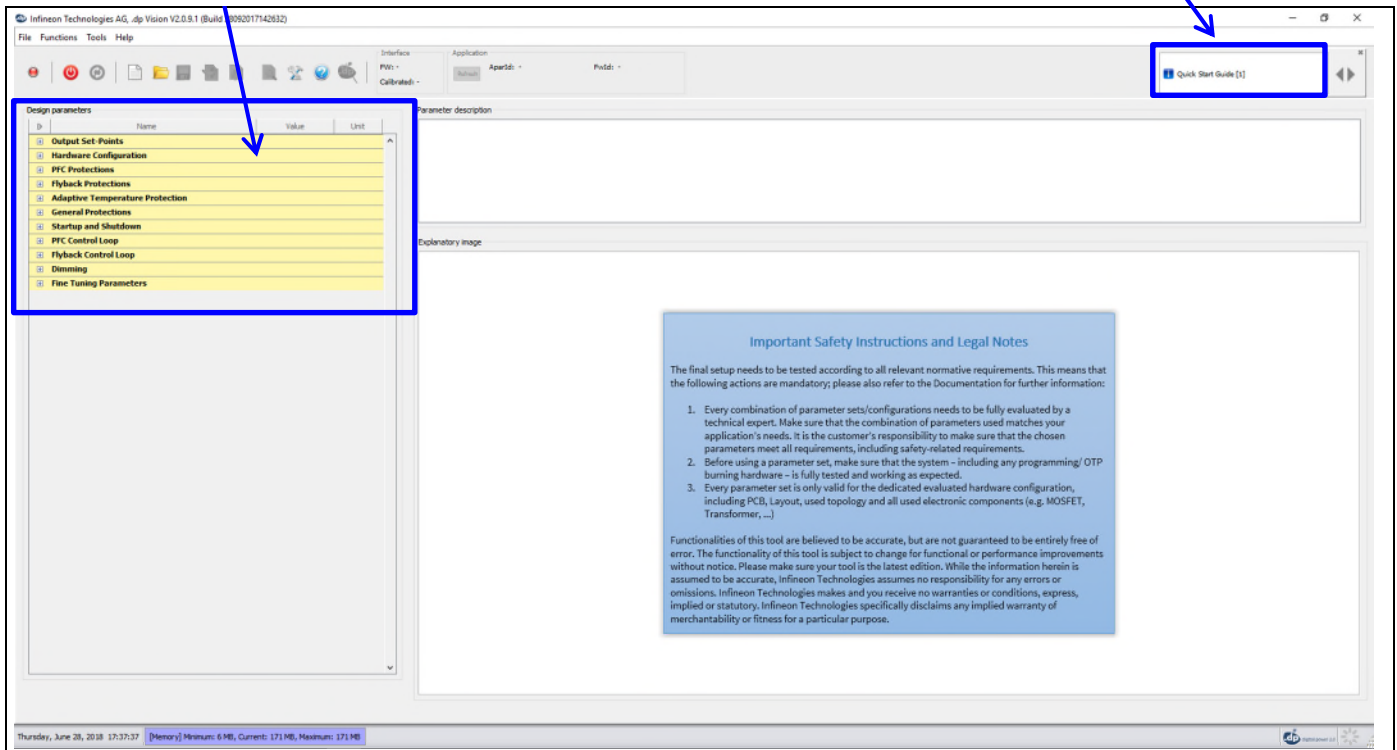


Figure 8 Parameters file loaded in .dp Vision

Note: The message bar shown in Figure 8 provides detailed information. For further information, please refer to the “dpvision User manual”.

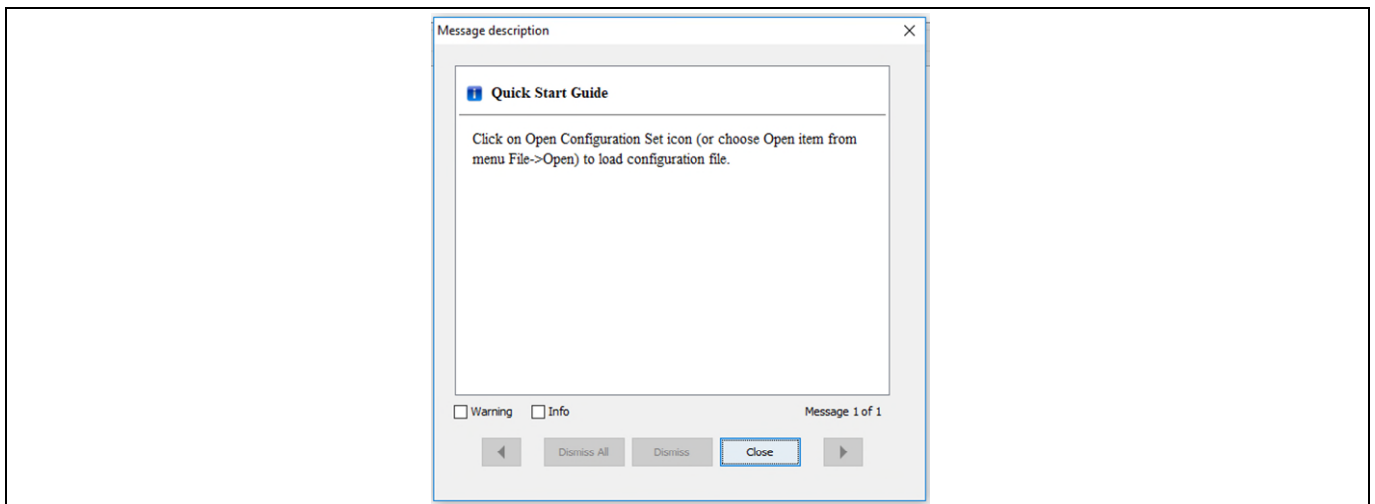


Figure 9 Message description

Getting started

There are two options available to configure the IC based on the parameter values in .dp Vision.

- 1) Non-permanent for testing
- 2) Permanent for regular operation





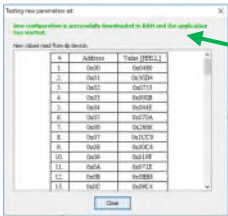
1) Test configuration

This function will download the parameter values from .dp Vision into the XDPL8221 RAM memory space, and it will then be followed by an automatic IC start-up for application testing with the new configuration. As long as the board is activated, the V_{CC} is supplied.

Parameters configuration with this option is not permanent, because the loaded RAM content gets lost once the IC supply voltage is turned off or the IC restarts due to certain protections. For detailed information, please refer to the “dpvision User manual” in the “Documents” folder.

Table 2 shows the procedures for using test configuration function in .dp Vision to load the new parameter values in the RAM and test the application with the new configuration.

Table 2 Test configuration procedures

Step	Instruction
1	Open configuration file and change parameter value (see example in Figure 8).
2	Ensure that the primary supply voltage (AC input) to the board is not active and the hardware connection for configuration is OK based on Figure 2 and Figure 4 .
3	Press  to supply power and establish a connection to the target XDPL8221. After this, XDPL8221 will be in configuration mode and the device status  should change to  .
4 (optional)	Ensure that the LED output is connected to a load, and switch on AC input (e.g. 230 V AC). After this, the board will not start because XDPL8221 is still in configuration mode.
5	<p>Press  to test the configuration with target XDPL8221. After this, the IC will automatically start normal operation with the new configuration and the window below will pop up:</p>  <p style="color: green; font-weight: bold;">New configuration is successfully downloaded to RAM and the application has started</p> <p>Note: If the parameter configuration is equivalent to the pre-existing parameters, the XDPL8221 will not download them to RAM.</p>
6	Press “Close” on the pop-up window.
7	To test another configuration, repeat these steps.

Note: *If there is any error between steps 1 and 7, refer to the message bar of .dp Vision for the error message. For further information, please refer to the “dpvision User manual”.*





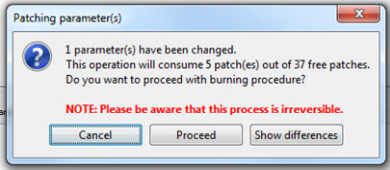
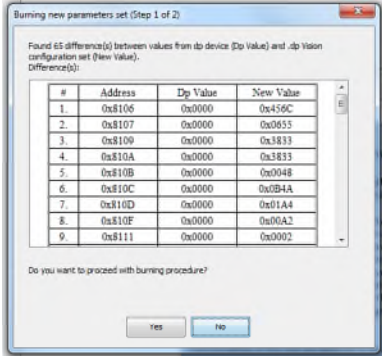
Getting started

2) Burn configuration

As the XDPL8221 chip on the 50 W reference design PCB has a first full set of parameters in its One-Time Programmable (OTP) memory space, only changed parameters are written in the OTP memory. For detailed information, please refer to the “dpvision User manual” in the “Documents” folder.

Table 3 shows the procedures to burn a parameter update in .dp Vision into the OTP memory.

Table 3 Burn configuration procedures

Step	Instruction
1	Load configuration file (see example in Figure 8).
2	Modify the parameter value needed, then press [File] >> [Save] or [File] >> [Save as] , to save the configuration file. Otherwise, proceed to step 3.
3 (optional)	Disconnect or turn off AC input voltage and check the hardware connection for configuration, see Figure 2 and Figure 4 .
4	Press  to supply power and establish connection to the target XDPL8221. After this, XDPL8221 will enter configuration mode and the device status  should change to  .
5	<p>Press  to burn configuration into target XDPL8221.</p> <p>After this step, a window pops up, like one of these below.</p> <div style="display: flex; justify-content: space-around;">   </div> <p>Note: If the parameter configuration is equivalent to the pre-existing parameters, the XDPL8221 will not burn them in the OTP memory.</p>
6	Press “Proceed” or “Yes” to burn the configuration. After this, a window pops up indicating success.
7	Press “OK” on the pop-up window then disconnect the programming cable from the board connector and test the application, if needed.



Getting started

Revision history

Major changes since the last revision

Page or reference	Description of change
All	First release

Other Trademarks

All referenced product or service names and trademarks are the property of their respective owners.

Edition 2016-11-01/2018-11-25

Published by

Infineon Technologies AG

81726 Munich, Germany

© 2019 Infineon Technologies AG.

All Rights Reserved.

Do you have a question about this document?

Email: erratum@infineon.com

Document reference

AN_GS_201611_PL21_003

IMPORTANT NOTICE

The information contained in this application note is given as a hint for the implementation of the product only and shall in no event be regarded as a description or warranty of a certain functionality, condition or quality of the product. Before implementation of the product, the recipient of this application note must verify any function and other technical information given herein in the real application. Infineon Technologies hereby disclaims any and all warranties and liabilities of any kind (including without limitation warranties of non-infringement of intellectual property rights of any third party) with respect to any and all information given in this application note.

The data contained in this document is exclusively intended for technically trained staff. It is the responsibility of customer's technical departments to evaluate the suitability of the product for the intended application and the completeness of the product information given in this document with respect to such application.

For further information on the product, technology, delivery terms and conditions and prices please contact your nearest Infineon Technologies office (www.infineon.com).

WARNINGS

Due to technical requirements products may contain dangerous substances. For information on the types in question please contact your nearest Infineon Technologies office.

Except as otherwise explicitly approved by Infineon Technologies in a written document signed by authorized representatives of Infineon Technologies, Infineon Technologies' products may not be used in any applications where a failure of the product or any consequences of the use thereof can reasonably be expected to result in personal injury.



Стандарт Электрон Связь

Мы молодая и активно развивающаяся компания в области поставок электронных компонентов. Мы поставляем электронные компоненты отечественного и импортного производства напрямую от производителей и с крупнейших складов мира.

Благодаря сотрудничеству с мировыми поставщиками мы осуществляем комплексные и плановые поставки широчайшего спектра электронных компонентов.

Собственная эффективная логистика и склад в обеспечивает надежную поставку продукции в точно указанные сроки по всей России.

Мы осуществляем техническую поддержку нашим клиентам и предпродажную проверку качества продукции. На все поставляемые продукты мы предоставляем гарантию .

Осуществляем поставки продукции под контролем ВП МО РФ на предприятия военно-промышленного комплекса России , а также работаем в рамках 275 ФЗ с открытием отдельных счетов в уполномоченном банке. Система менеджмента качества компании соответствует требованиям ГОСТ ISO 9001.

Минимальные сроки поставки, гибкие цены, неограниченный ассортимент и индивидуальный подход к клиентам являются основой для выстраивания долгосрочного и эффективного сотрудничества с предприятиями радиоэлектронной промышленности, предприятиями ВПК и научно-исследовательскими институтами России.

С нами вы становитесь еще успешнее!

Наши контакты:

Телефон: +7 812 627 14 35

Электронная почта: sales@st-electron.ru

Адрес: 198099, Санкт-Петербург,
Промышленная ул, дом № 19, литера Н,
помещение 100-Н Офис 331