

## UDP UPPI CARD USER'S GUIDE

### 1. Introduction

The UPPI-series evaluation cards are the engine of an MCU-based system, containing an MCU, optional radio, and minimal support circuitry.

These cards are designed around either a C8051F96xMCU or a Si102x/3x Wireless MCU. Only placement-critical items, such as bypass capacitors, crystals, dc-dc inductor, and RF front end circuitry are included. All other circuits reside on the hosting platform.

These cards are compatible with Silicon Labs Unified Development Platform MCU cards (UDP-F960-MCU series). They may also be used as prototyping modules, as they fit on a 2 mm-center prototyping board.

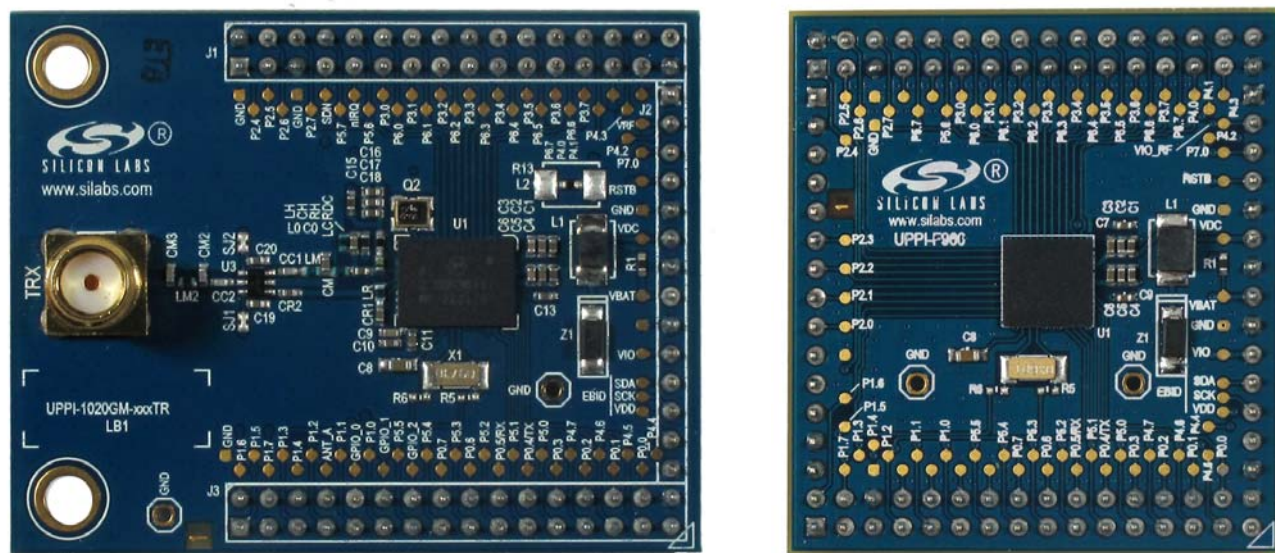


Figure 1. UPPI Cards with and without Radio

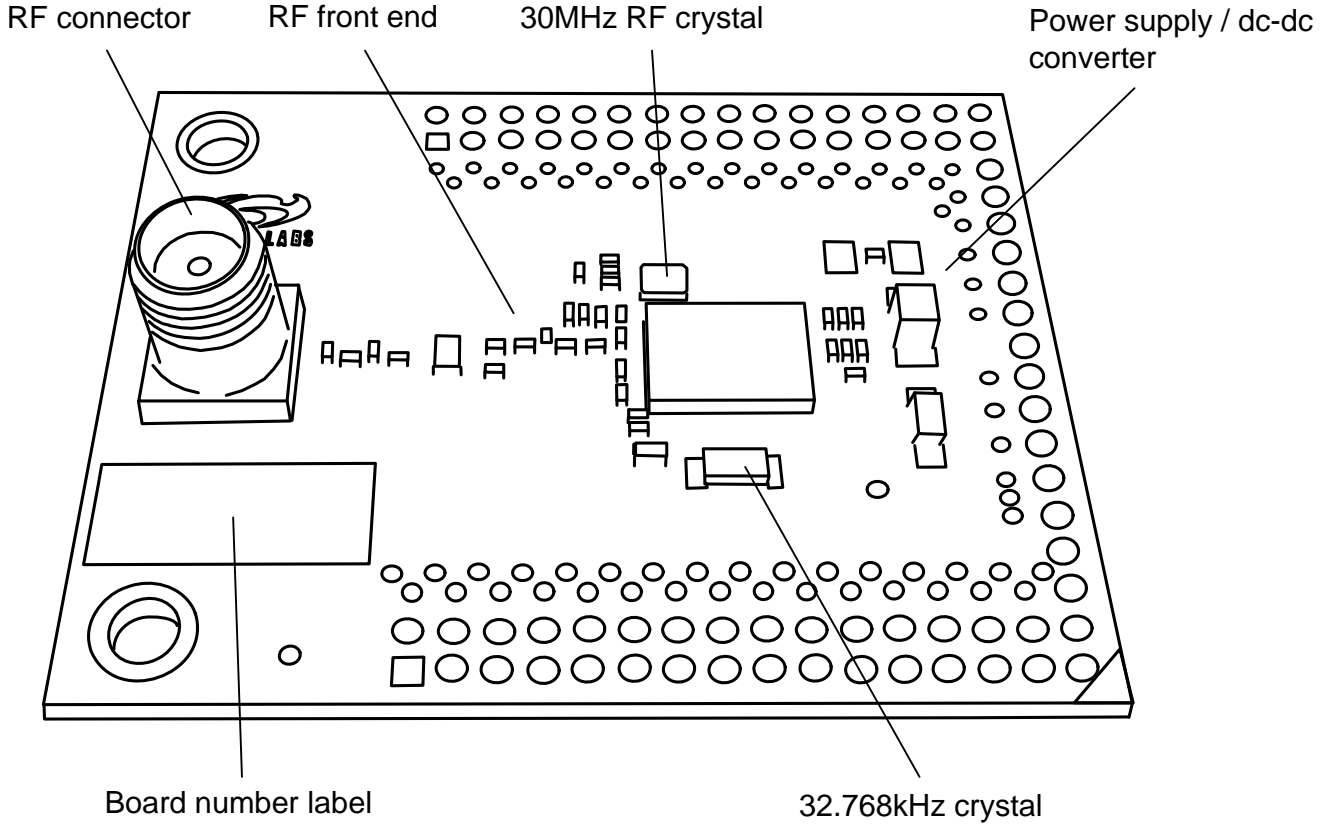
# UDP UPPI Card UG

## 2. Description

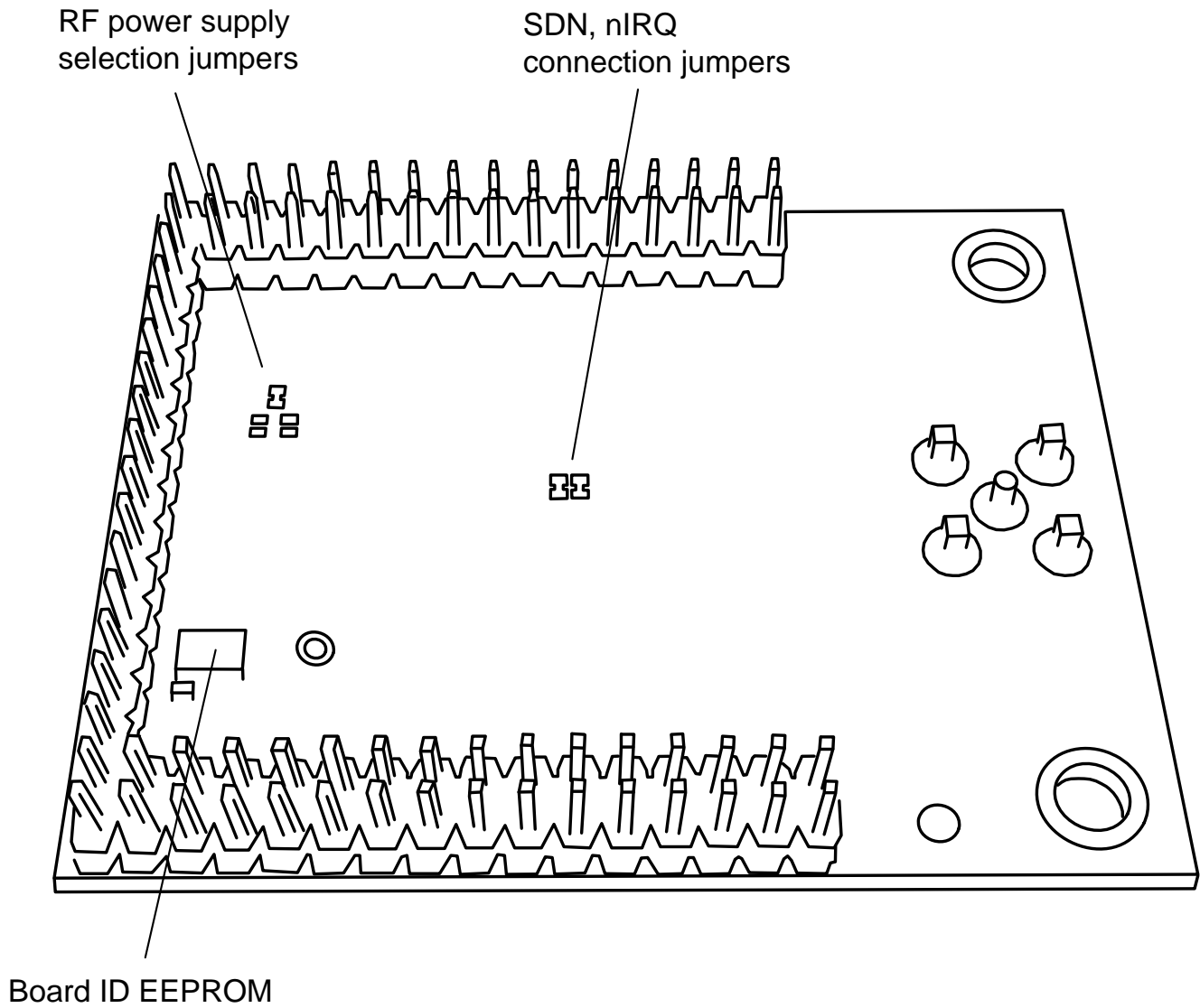
The UPPI cards contain the MCU device and a minimal number of supporting components. Most of the core device pins are connected directly to headers, allowing signal mapping to be defined by the host board, typically a UDP MCU card. (See "2.3. Compatibility" for more information.)

Each board design varies in schematic and features. Refer to the board design files available from [www.silabs.com](http://www.silabs.com) for specifics.

### 2.1. Features



**Figure 2. Top View: UPPI-10xx-fffTR and UPPI-10xx-fffDT Wireless MCU Boards**



**Figure 3. Bottom View: UPPI-10xx-fffTR and UPPI-10xx-fffDT Wireless MCU Boards**

# UDP UPPI Card UG

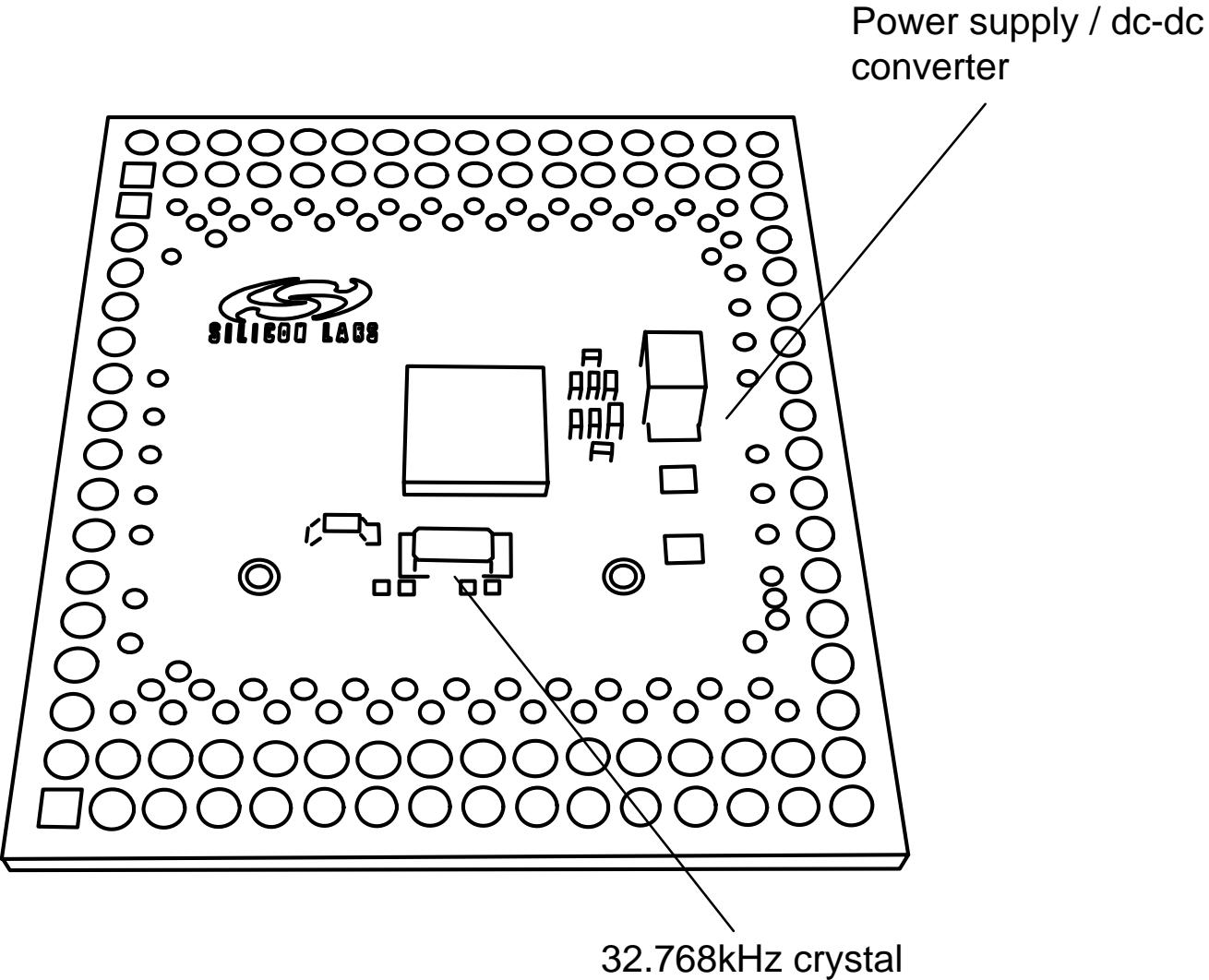
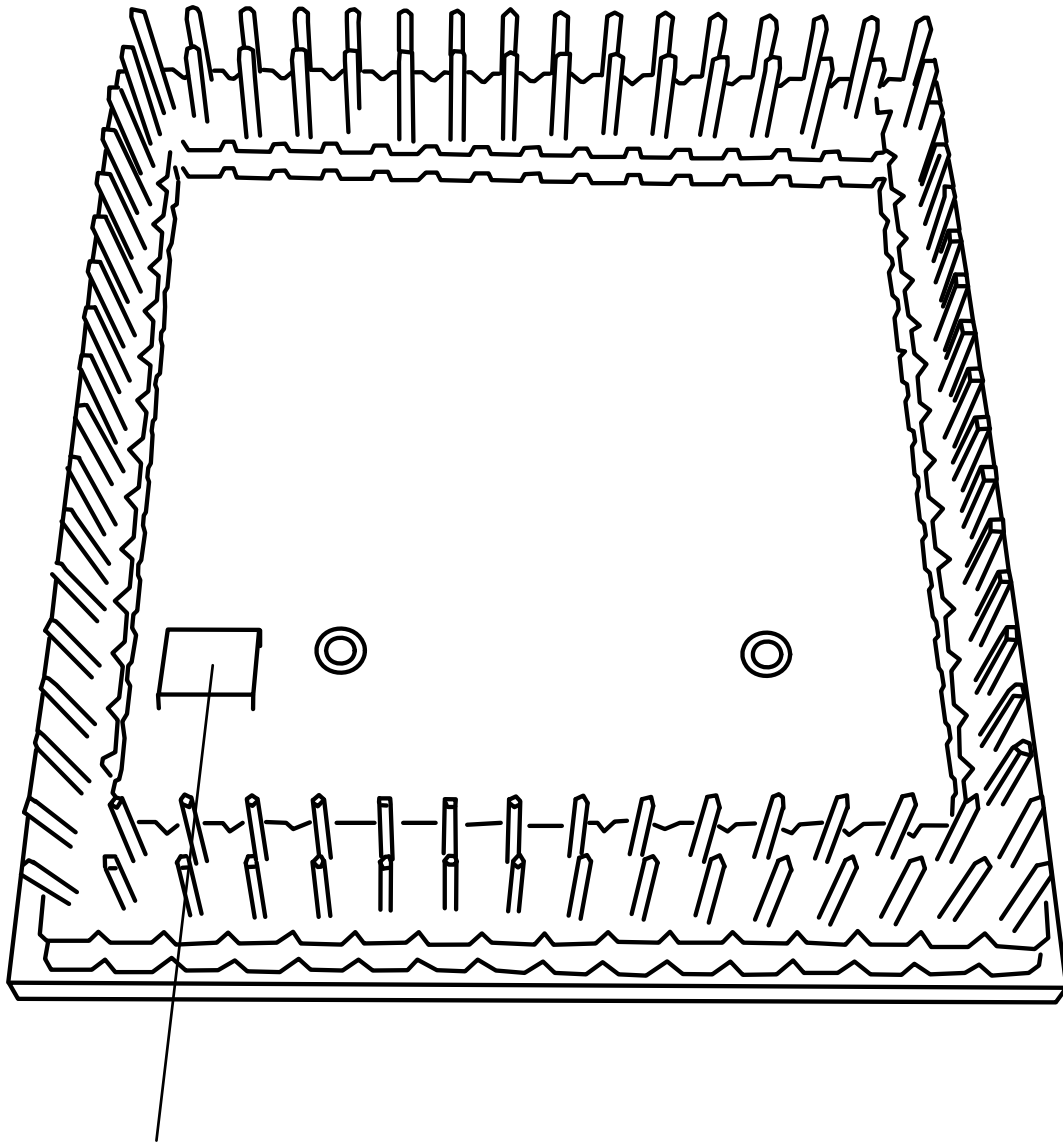


Figure 4. Top View: UPPI-F960



Board ID EEPROM

Figure 5. Bottom View: UPPI-F960

# UDP UPPI Card UG

---

The UPPI cards contain the following functions:

## ■ Power Supply

The device's VBAT and VDC pins are connected to external pins. The dc-dc inductor, optional diode, and bypass capacitors are all included on the UPPI board as recommended in the data sheet.

The VIO connection is routed to a pin and must be connected on the host board.

The VIO\_RF pin (if applicable) is connected to the VRF net and routed to a pin. This net supplies both the radio section power and the VIO\_RF I/O voltage. The source is set on the host board, but may be optionally hard-wired via solder jumpers on the back of the board.

## ■ Crystal Oscillators

The MCU has a 32.768kHz crystal connected to the XTAL 3/4 pins. Devices with a radio have a 30 MHz crystal connected to the radio's XOUT/XIN pins. These nets are not connected to pins.

## ■ RF Front End

All RF matching circuitry is on-board. The transmitter and receiver pins are both matched to a 50  $\Omega$  SMA connector. This connector may be used with test equipment or an appropriate antenna.

The matching is based on either a T/R switch or a Direct Tie topology. The T/R switch topology uses a TX/RX switch device to share the RF port between TX and RX paths. T/R is used with high power (+20dBm) devices. The Direct Tie topology passively sums TX and RX paths and is suitable for low-power (+13dBm) devices.

Both matching topologies are discussed in detail in the following application notes:

- AN427: EZRadioPRO™ Si433X & Si443X RX LNA Matching (+20dBm, T/R switch)
- AN435: Si4032/4432 PA Matching (+20 dBm, T/R switch)
- AN436: Si4030/4031/4430/4431 PA Matching (+13 dBm, Direct Tie)

## ■ RF GPIO Signals

The radio's GPIO\_0 - GPIO\_2 and ANT\_A nets are connected to pins. GPIO\_1 and GPIO\_2 are also connected on-board to the RF transmit/receive switch on high power ("TR" version) boards.

## ■ RF to MCU Interface Signals

The radio and MCU are interconnected within the Si102x/3x device. Two external signals, shutdown (SDN) and the interrupt (nIRQ) are connected to MCU port pins on the board. These signals may be disconnected by cutting jumpers on the back of the board.

## ■ Port Pins

Most port pins are connected directly to the module's pins. Exceptions include

- Pins dedicated to the on-board radio interface
- P1.2 / P1.3, as these pins are used for the 32.768kHz crystal. These may be connected by adding 0-ohm resistors.

## ■ Programming/Debugging

C2CK/RSTB and C2D are connected to the module header. C2CK/RSTB has an on-board pullup resistor to VBAT.

## ■ Unified Development Platform Support

An EEPROM is included on the back side of the board to identify board information to the UDP system.

This EEPROM is electrically isolated from the rest of the board except for a common ground.

The UPPI boards are based on 2mm-center headers. The footprint fits any C8051F96x- or Si102x/3x compatible Unified Development Platform MCU card. The UPPI boards may also be used for prototyping, using a 2mm-center perforated prototyping board.

The UPPI boards should be fastened to the base board using two 4-40 screws and 6.5mm standoffs to resist twisting moments from the antenna or RF cabling.

## 2.2. Ordering Information

A variety of UPPI boards are available, each tailored to a specific RF frequency band, transmitter power, and RF front end configuration. Refer to [www.silabs.com](http://www.silabs.com) for specific ordering information.

**Table 1. Ordering Information**

	Device	Description	Frequency	Tx Power (Max)	Rf Front End
<b>MCU Only</b>					
UPPI-F960	C8051F960	'F960 microcontroller only	—	—	—
<b>Wireless MCU</b>					
UPPI-1020-fffTR	Si1020	Si1020 Wireless MCU with T/R switch (+20 dBm)	fff MHz	+20 dBm max	T/R switch
UPPI-1024-fffDT	Si1024	Si1023 Wireless MCU with Direct Tie RF front end (+13 dBm)	fff MHz	+13 dBm max	Direct Tie
*Note: refer to <a href="http://www.silabs.com">www.silabs.com</a> for an up to date list of supported frequency variants					

## 2.3. Compatibility

These boards are compatible with the following UDP MCU cards:

- UDP F960 MCU card with Multiplexed LCD (UPMP-F960-MLCD)
- UDP F960 MCU card with EMIF (UPMP-F960-EMIF)

# UDP UPPI Card UG

## 2.4. Schematics

These schematics show circuit topologies of the various cards. Refer to the latest schematics, available from [www.silabs.com](http://www.silabs.com), for actual values.

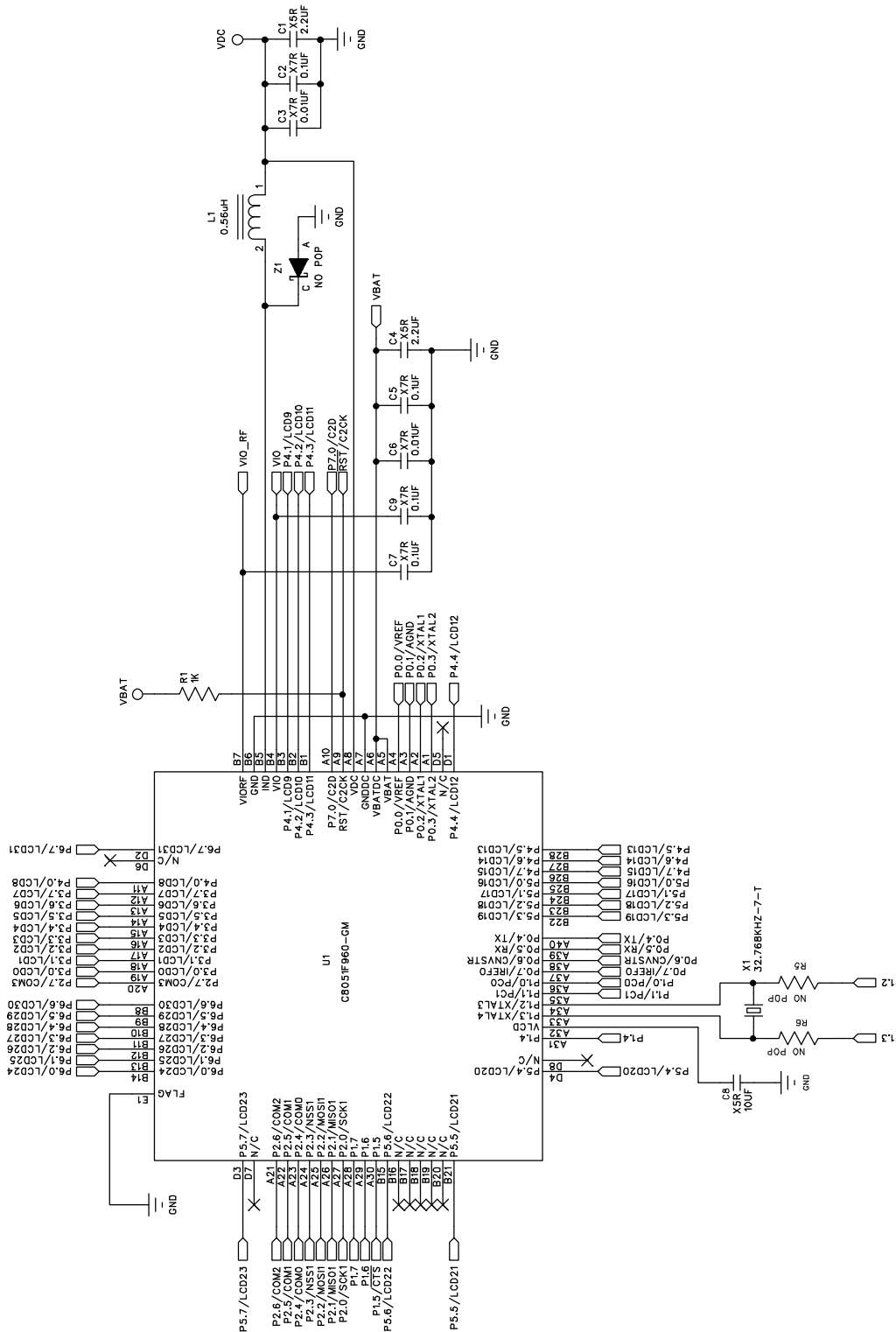


Figure 6. UPPI-F960 (1 of 2)



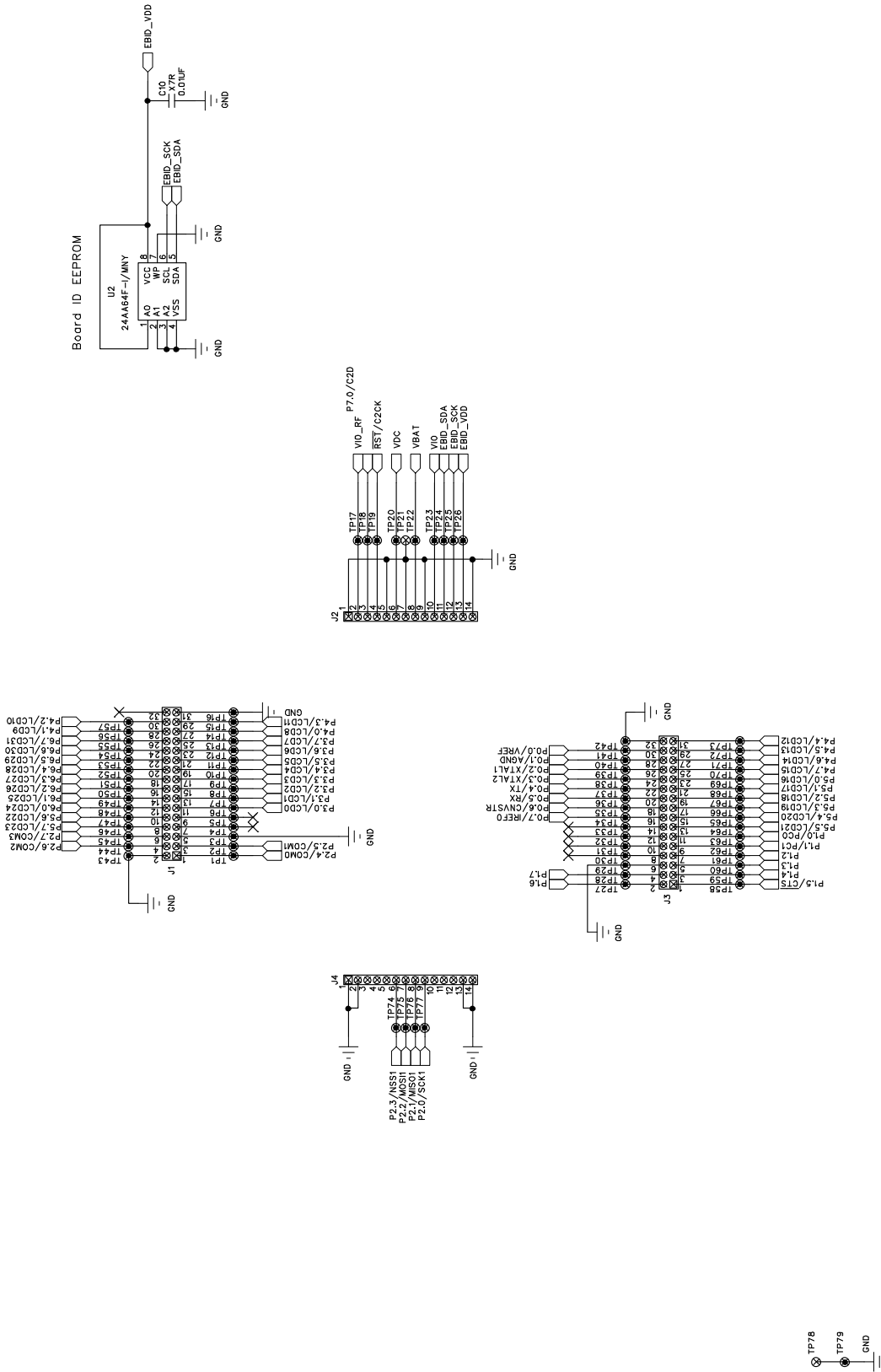


Figure 7. UPPI-F960 (2 of 2)

# UDP UPPI Card UG

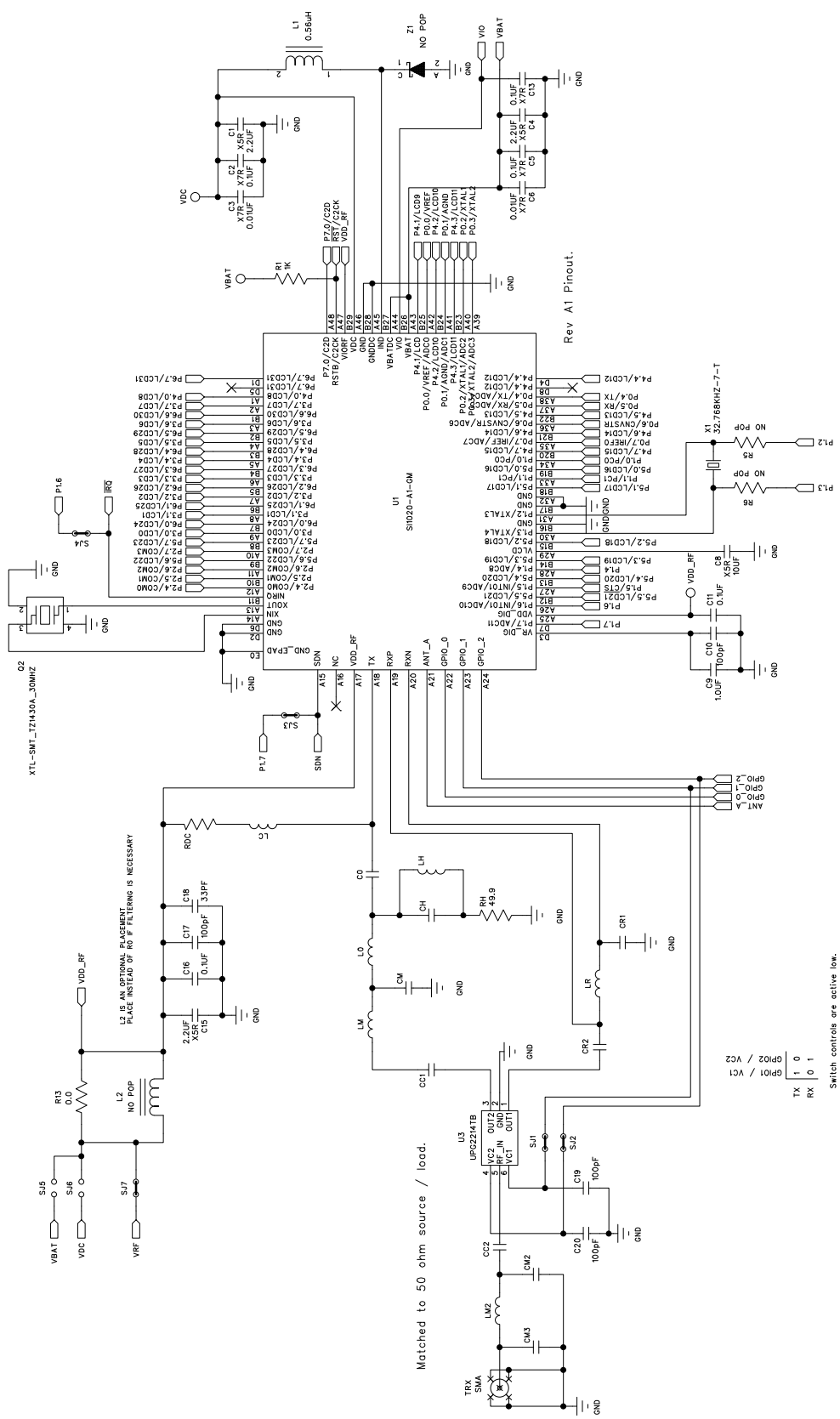


Figure 8. UPPI-1020-ffTR (1 of 2)

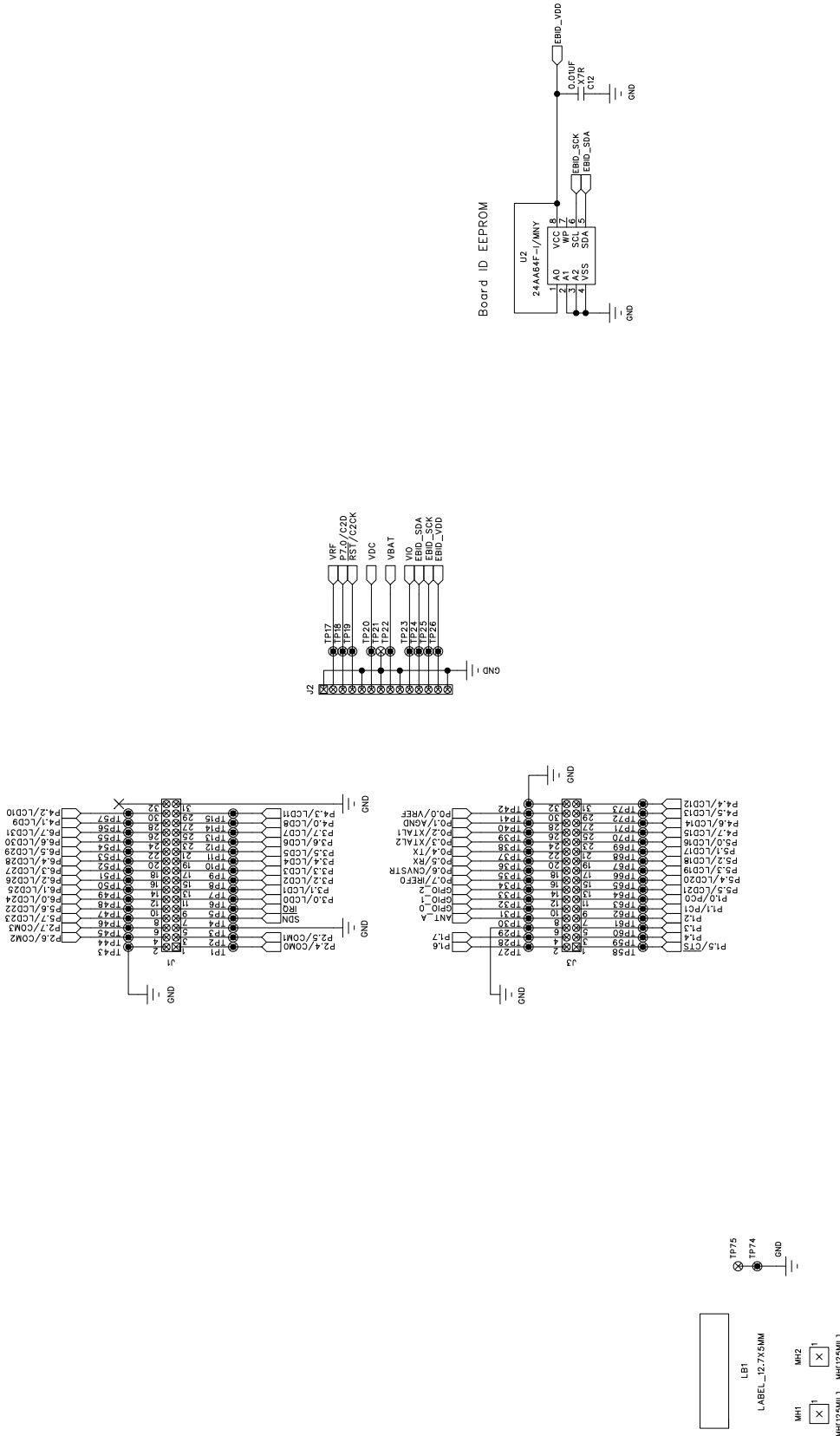


Figure 9. UPPI-1020-fffTR (2 of 2)

# UDP UPPI Card UG

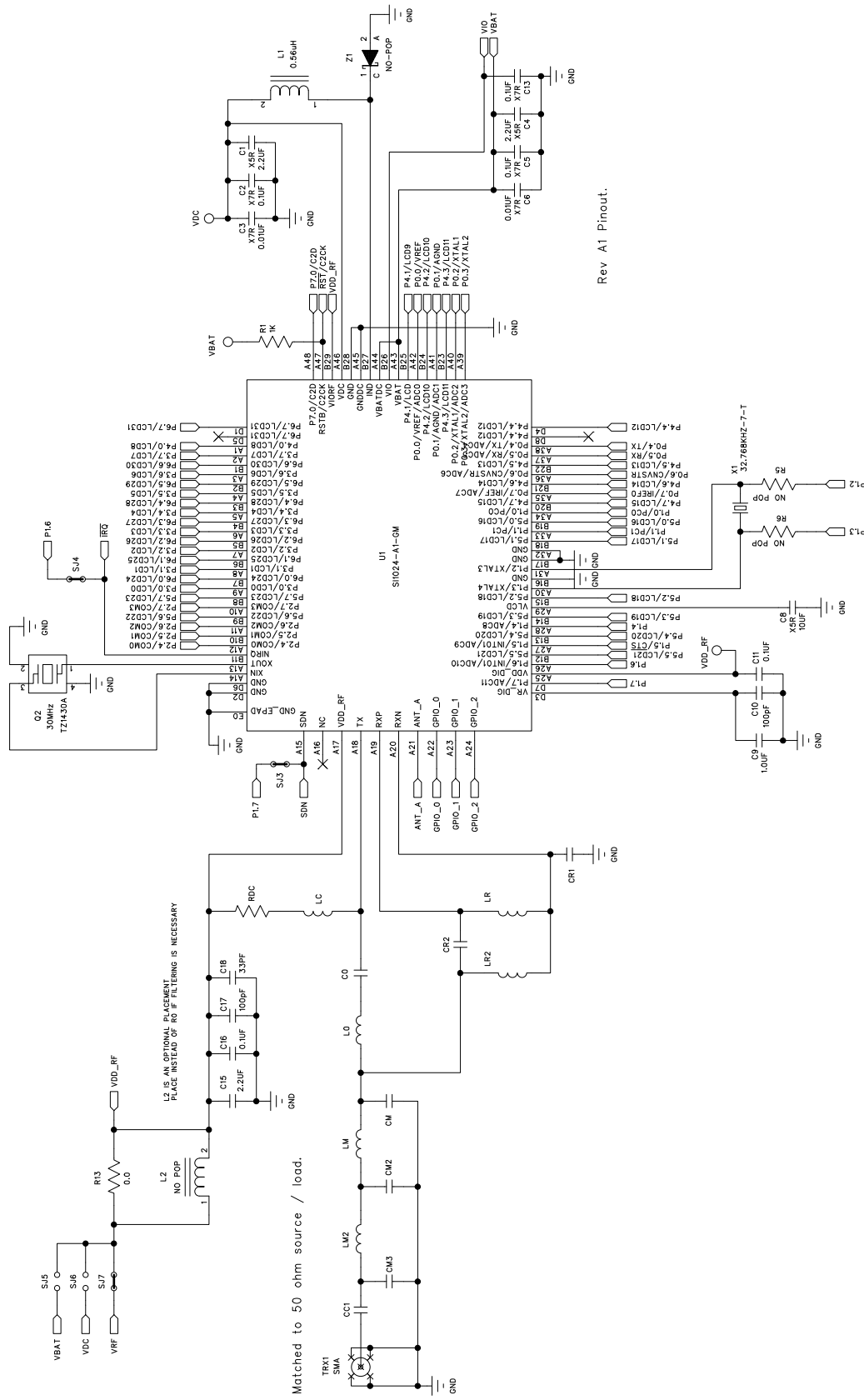


Figure 10. UPPI-1024-ffDT (1 of 2)

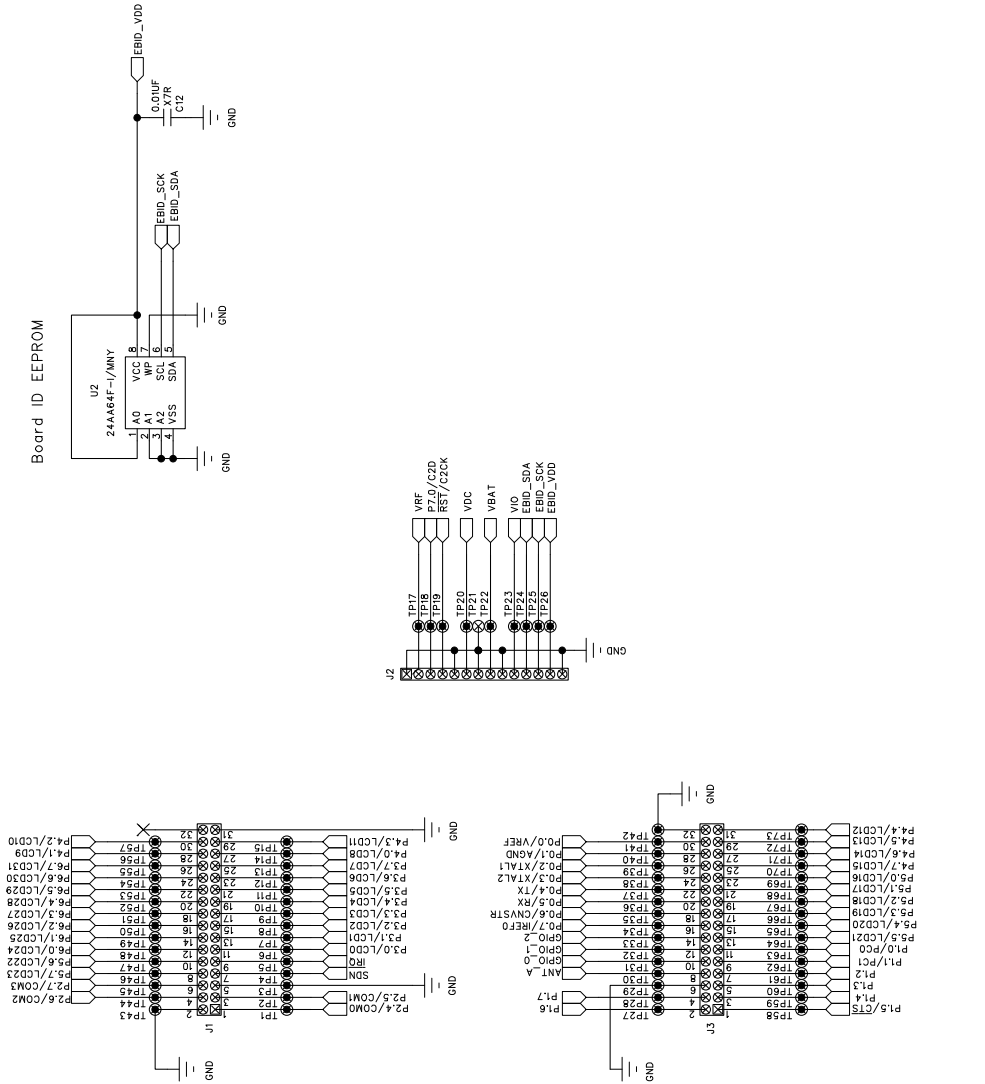


Figure 11. UPPI-1024-fffdt (2 of 2)

LBI1  
 LABEL\_12:7X5MM--UPPI-1024GM--868DT.



# UDP UPPI Card UG

## 2.5. PCB Layouts

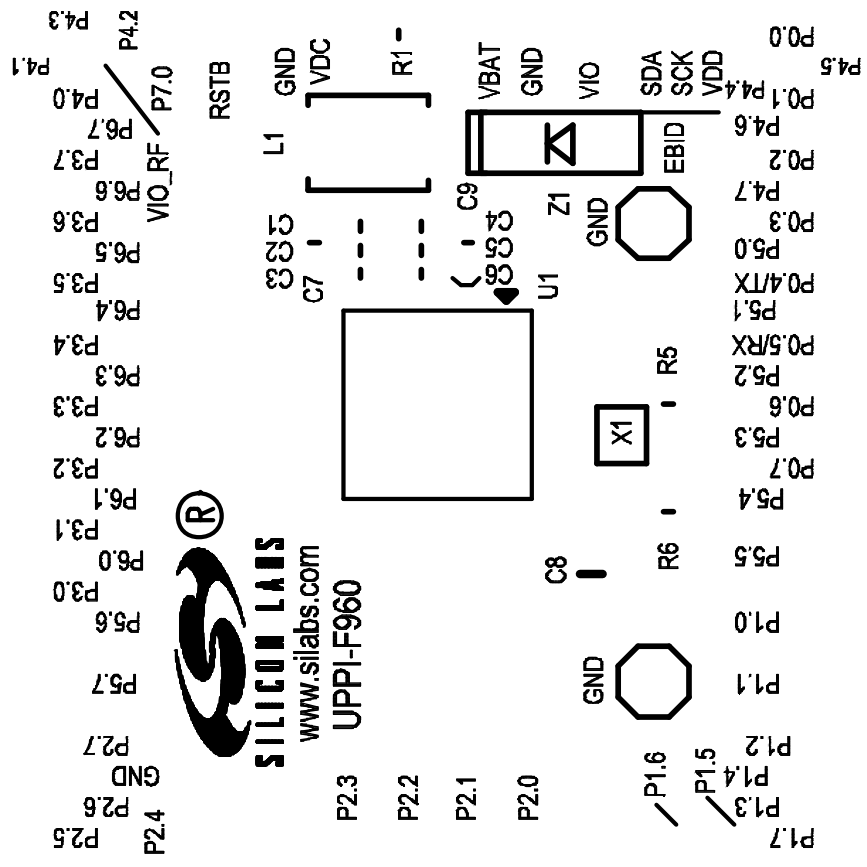


Figure 12. UPPI-F960 Silkscreen Top

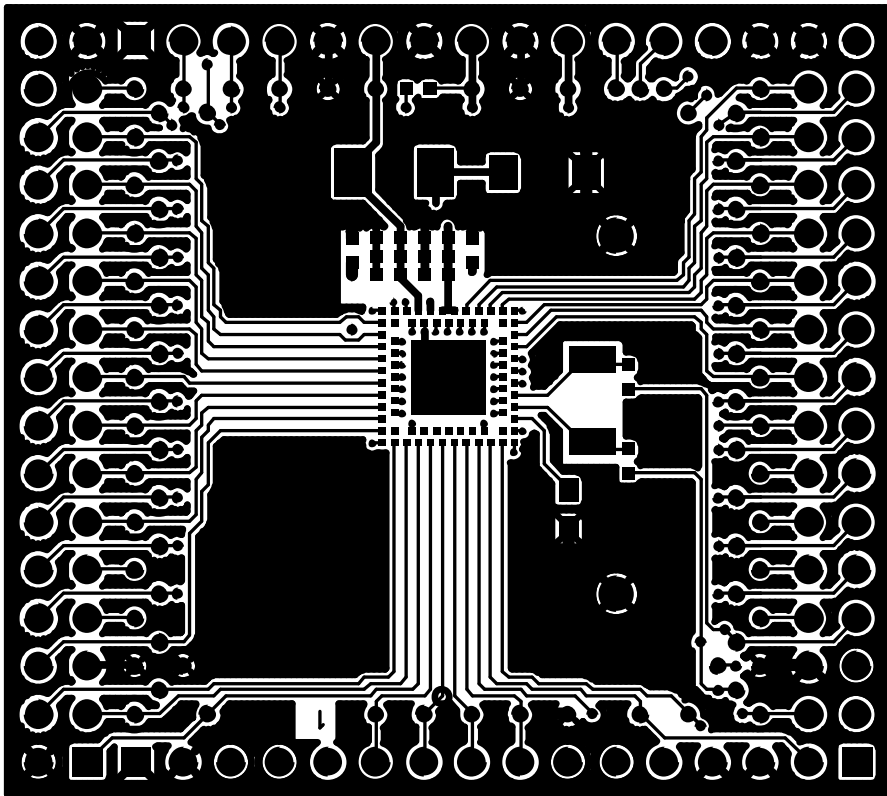


Figure 13. UPPI-F960 Top Side

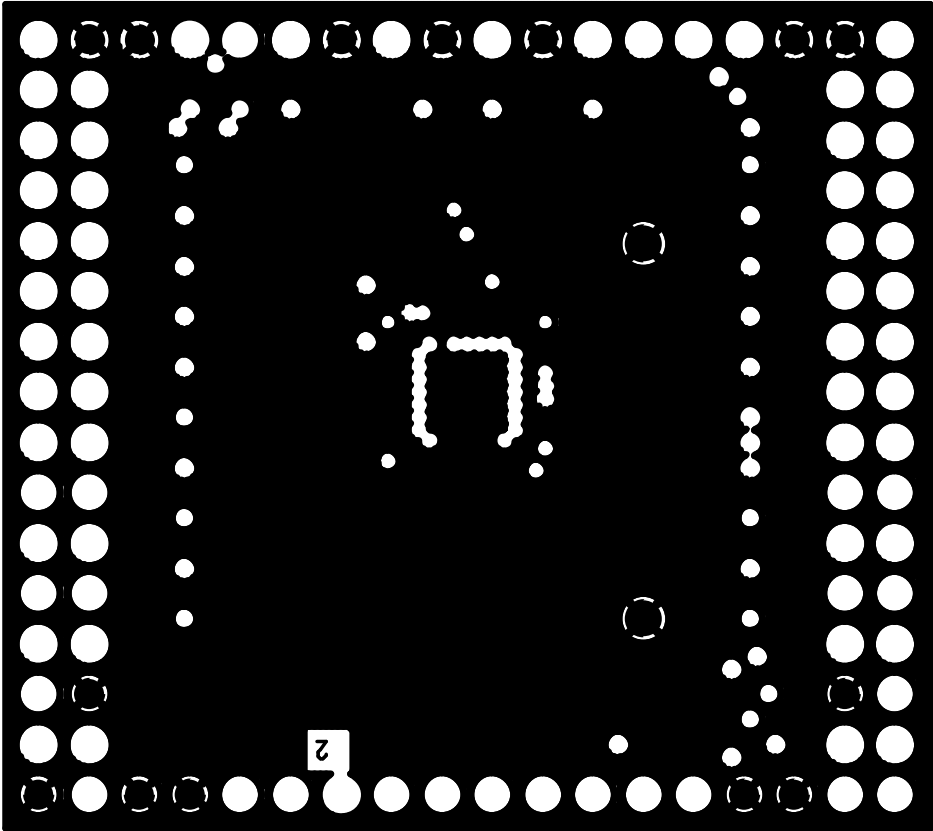


Figure 14. UPPI-F960 Layer 2



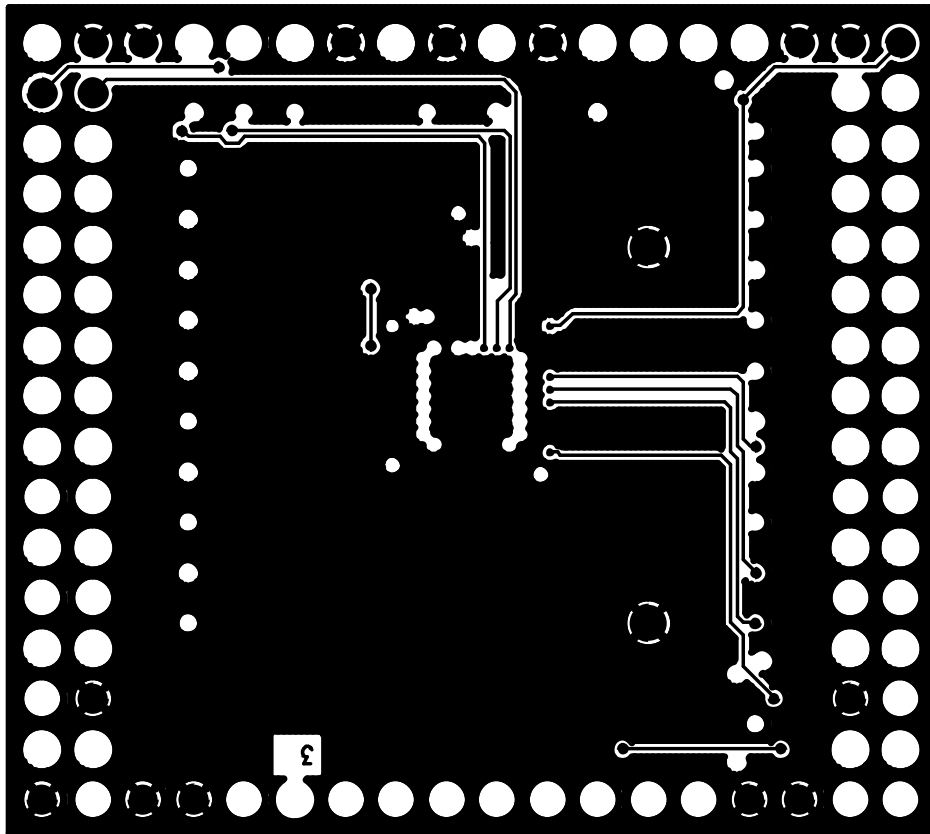


Figure 15. UPPI-F960 Layer 3

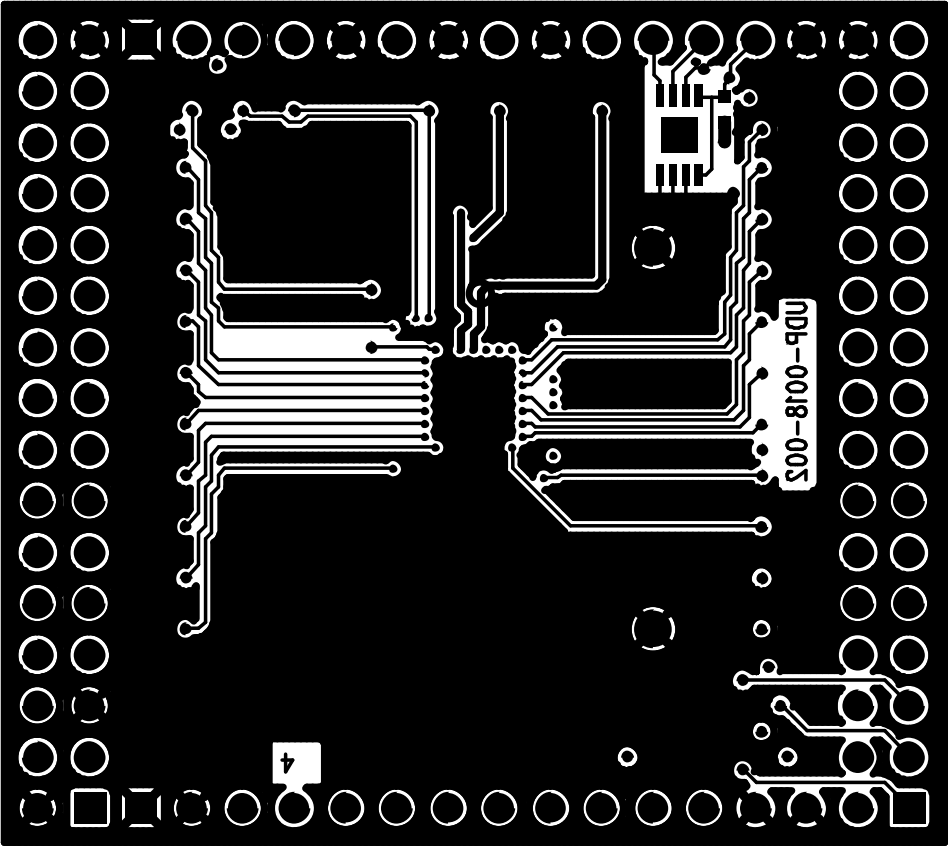
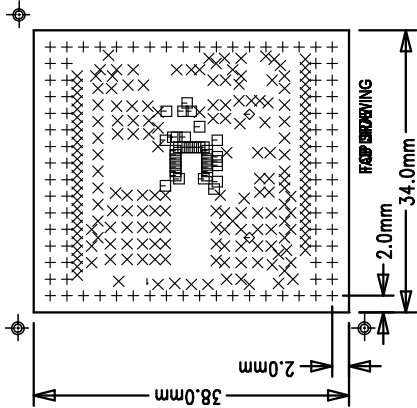


Figure 16. UPPI-F960 Bottom Side

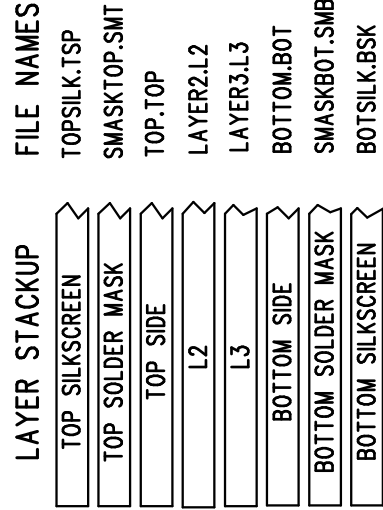
**NOTES : UNLESS OTHERWISE SPECIFIED**

1. MANUFACTURE IN ACCORDANCE WITH IPC-6012, TYPE 3, CLASS 2.
2. END PRODUCT FEATURES SHALL NOT VARY MORE THAN 20% FROM ARTWORK ORIGINALS.
3. LAMINATE AND PREPREG SHALL BE AS PER IPC-4101/26,83,98 WITH A DECOMPOSITION TEMPERATURE  $\geq$  345°C, COLOR, NATURAL.
4. COPPER WEIGHT SHALL BE 1.0 OZ./SQ. FT. BEFORE PLATING, UNLESS OTHERWISE SPECIFIED.
5. ALL PLATED THROUGH HOLES SHALL HAVE A MINIMUM OF 0.001" COPPER.
6. DRILL HOLE TOLERANCE AFTER PLATING SHALL BE  $\pm$  0.003".
7. MINIMUM ANNULAR RING SHALL BE 0.001".
8. MINIMUM ANNULAR RING AT EMERGENT CONDUCTORS SHALL BE 0.003".
9. FINAL PCB THICKNESS SHALL BE 0.062"  $\pm$  10% ACROSS PADS.
10. WARP/TWIST SHALL NOT EXCEED 0.010 INCH PER INCH.
11. FINISH SHALL BE LPI, BLUE S.M.O.B.C., BOTH SIDES.
12. SILKSCREEN WITH NONCONDUCTIVE WHITE EPOXY INK.
13. NO VENDOR MARKINGS OR ALTERATIONS SHALL BE PERMITTED ON ANY METAL OR SILKSCREEN LAYERS.
14. BOARD STACKUP:
  - TOP LAYER PLATED TO 1 OZ
  - PREPREG FR4: 12 MILS  $\pm$  1 MIL
  - L2-GND 1 OZ Cu
  - PREPREG FR4: 28 MILS
  - L3-POWER 1 OZ Cu
  - PREPREG FR4: 12 MILS  $\pm$  1 MIL
  - BOTTOM LAYER PLATED TO 1 OZ
15. PLATE IN ACCORDANCE WITH IPC-4552, 118-236µIN OF NICKEL, WITH AN ADDITIONAL 2-6 µIN OF GOLD ON TOP.

SIZE	QTY	SYM	PLATED	TOL
30	92	+	YES	$\pm$ 0.003"
8	194	X	YES	$\pm$ 0.003"
6	39	□	YES	$\pm$ 0.003"
40	2	◇	YES	$\pm$ 0.003"



SILICON LABS - UDP-0018-002 (UPPI-F960)



SCALE: NONE

Figure 17. UPPI-F960 Assembly Layer

# UDP UPPI Card UG

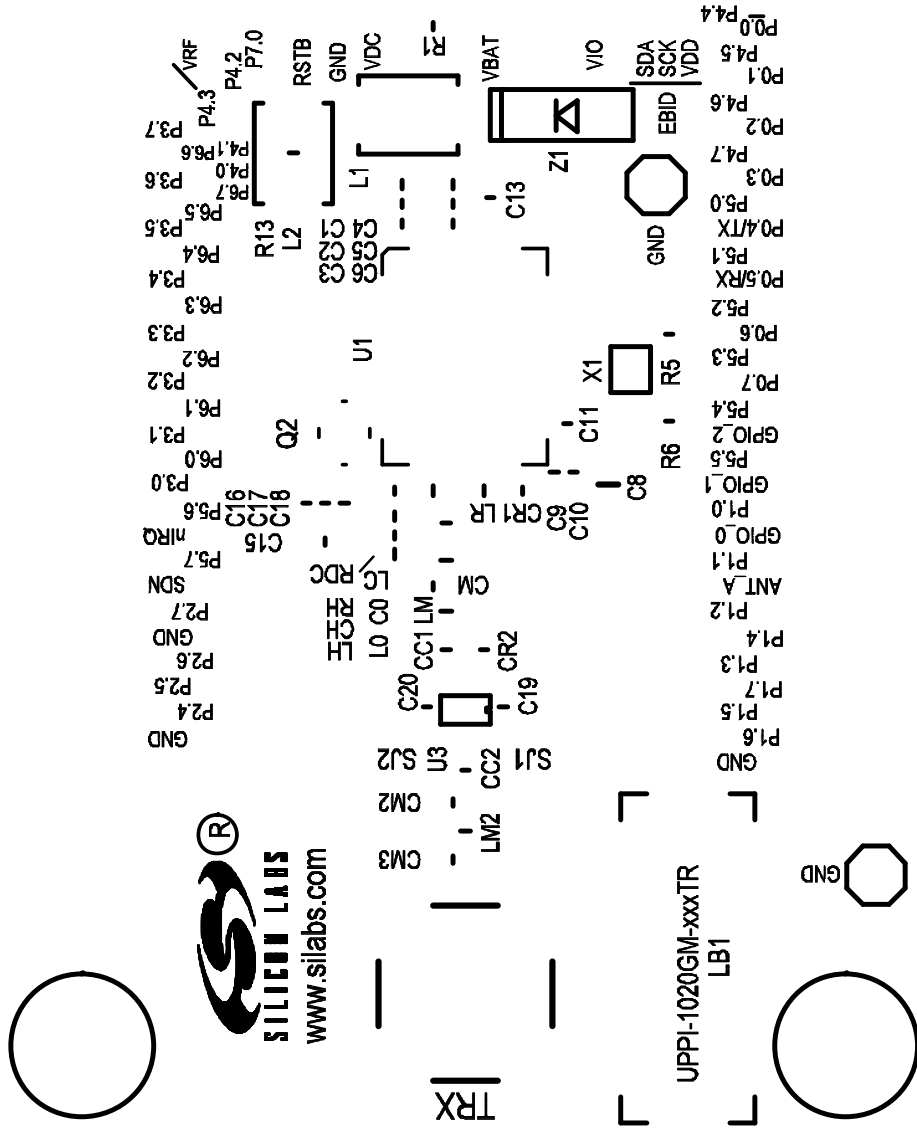


Figure 18. UPPI-1020-fffTR Silkscreen Top

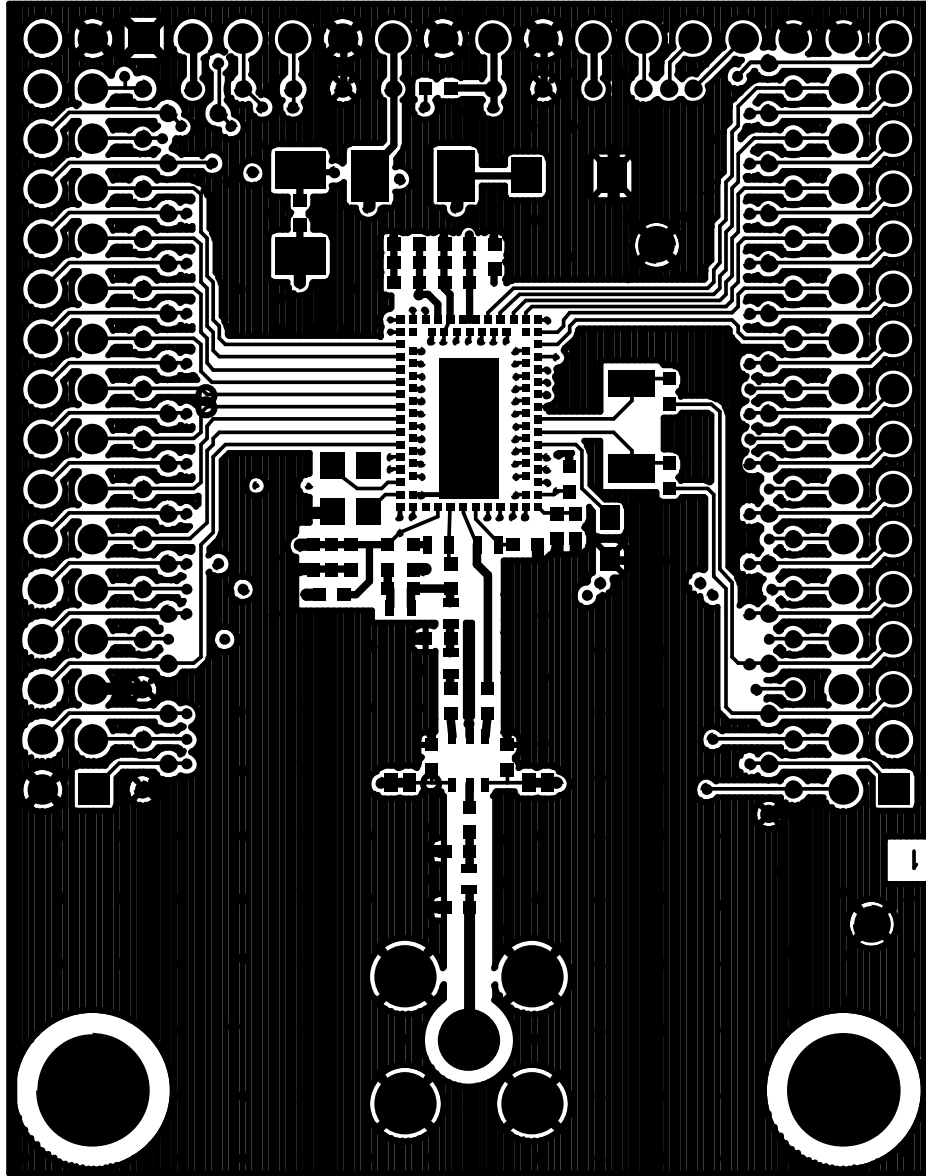


Figure 19. UPPI-1020-ffTR Top Side

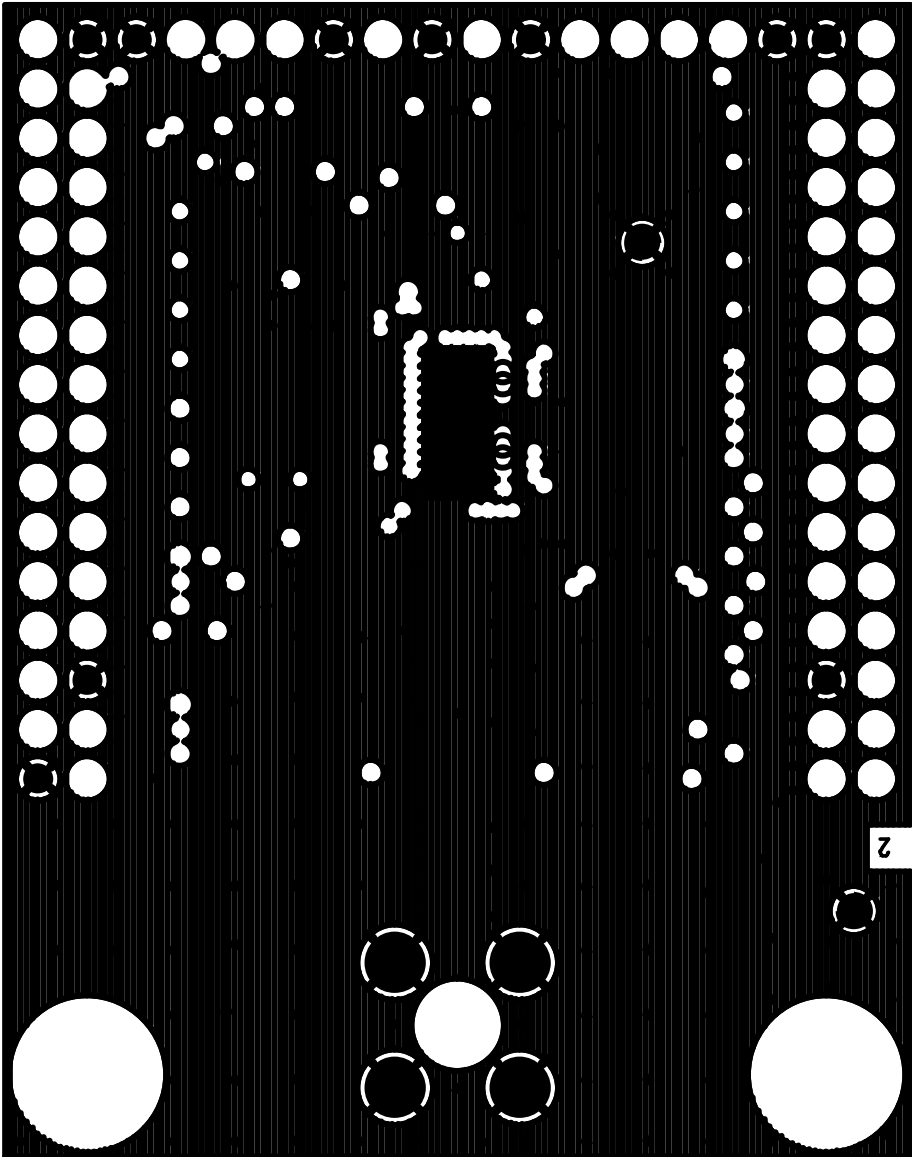


Figure 20. UPPI-1020-fffTR Layer 2

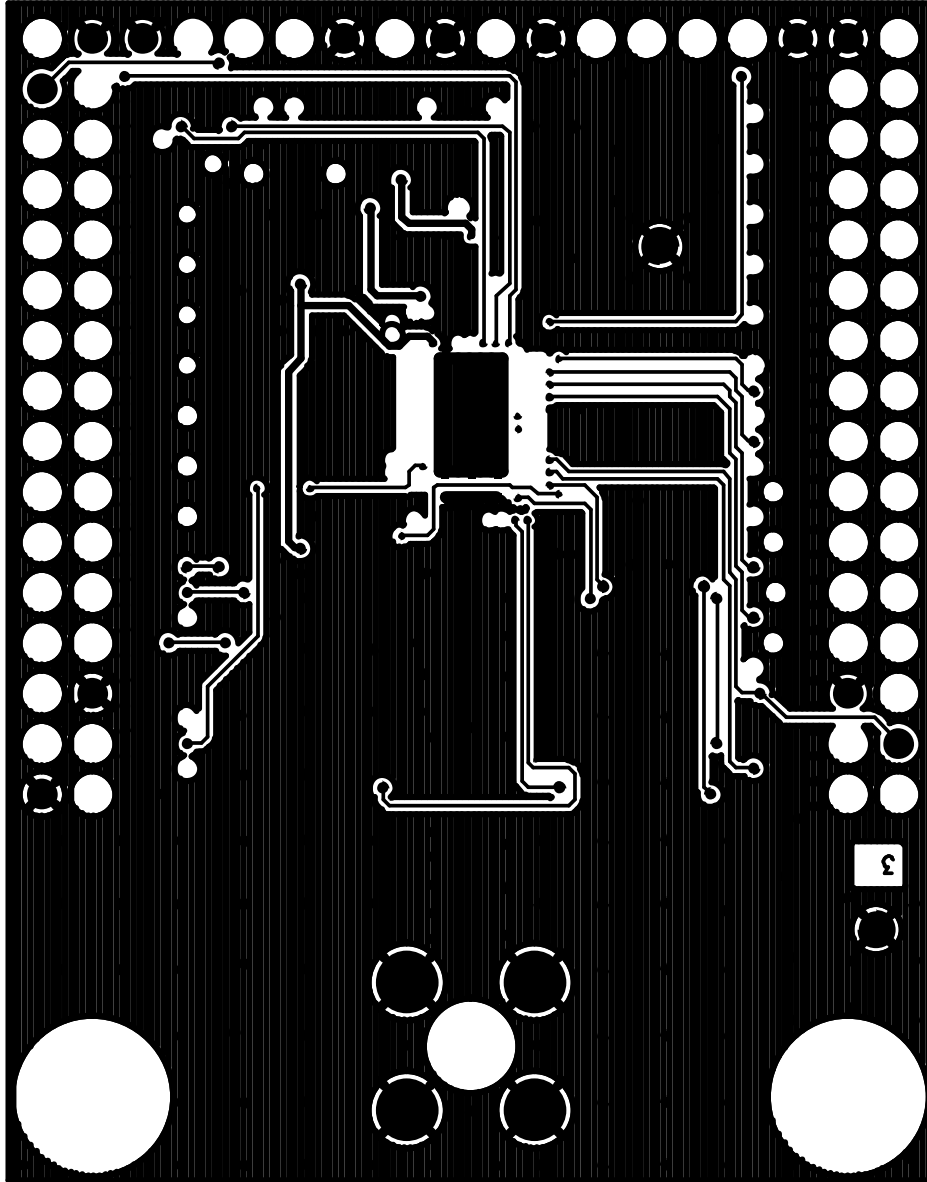


Figure 21. UPPI-1020-ffTR Layer 3

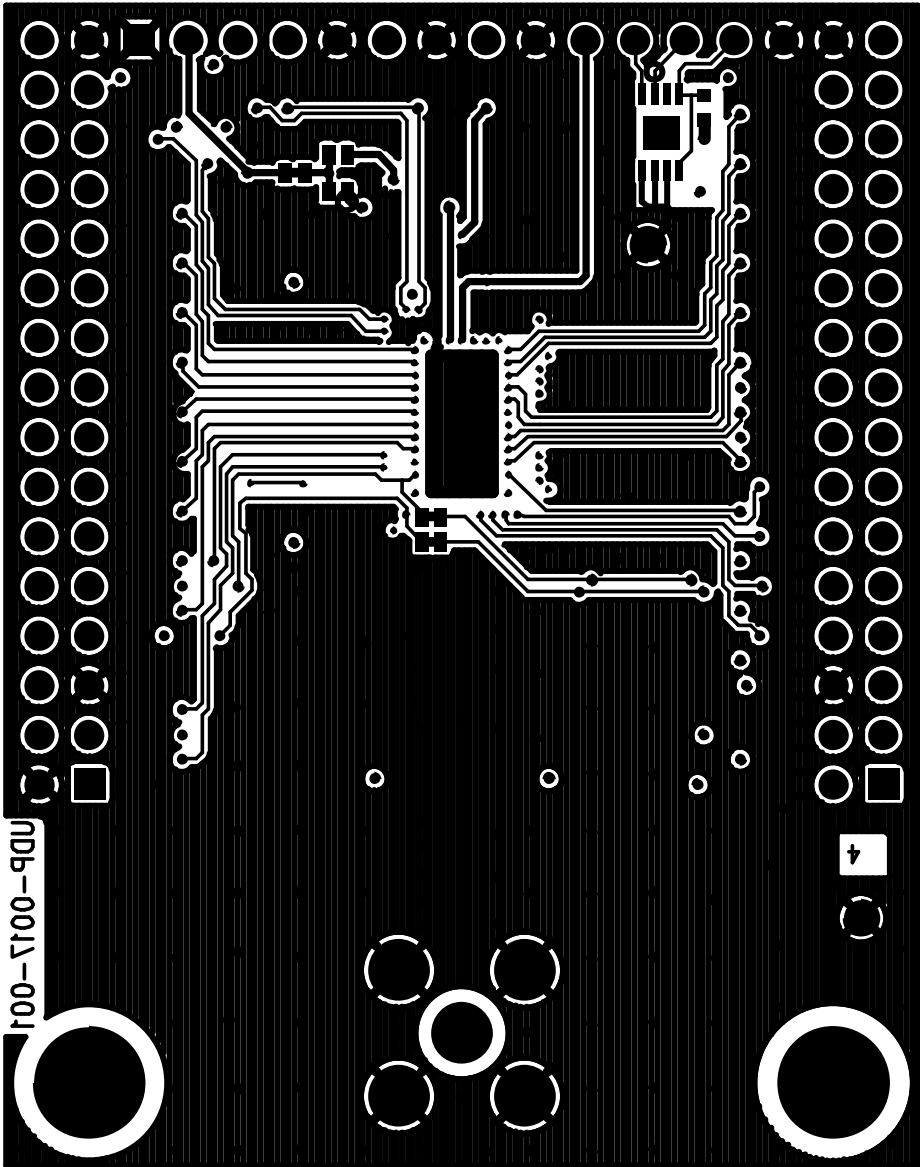


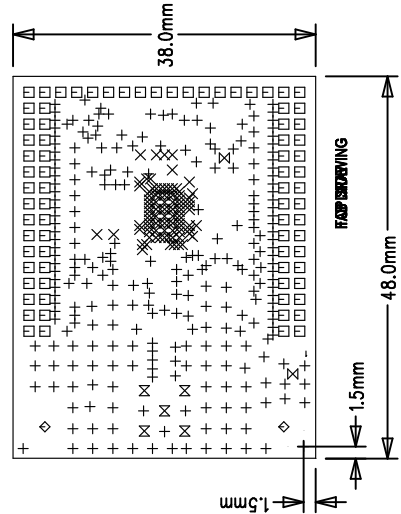
Figure 22. UPPI-1020-ffTR Bottom Side



**NOTES : UNLESS OTHERWISE SPECIFIED**

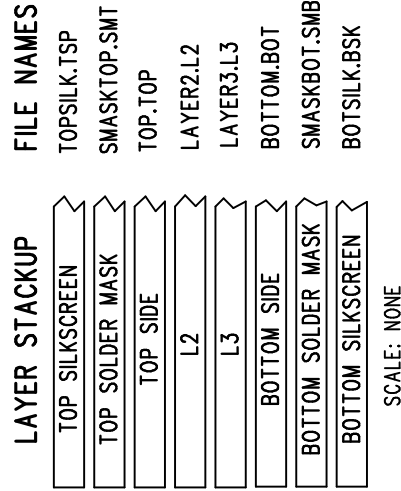
1. MANUFACTURE IN ACCORDANCE WITH IPC-6012, TYPE 3, CLASS 2.
2. END PRODUCT FEATURES SHALL NOT VARY MORE THAN 20% FROM ARTWORK ORIGINALS.
3. LAMINATE AND PREPREG SHALL BE AS PER IPC-4101/26,83,98 WITH A DECOMPOSITION TEMPERATURE  $\geq$  345°C, COLOR, NATURAL.
4. COPPER WEIGHT SHALL BE 1.0 OZ./SQ. FT. BEFORE PLATING, UNLESS OTHERWISE SPECIFIED.
5. ALL PLATED THROUGH HOLES SHALL HAVE A MINIMUM OF 0.001" COPPER.
6. DRILL HOLE TOLERANCE AFTER PLATING SHALL BE  $\pm$  0.003".
7. MINIMUM ANNULAR RING SHALL BE 0.001".
8. MINIMUM ANNULAR RING AT EMERGENT CONDUCTORS SHALL BE 0.003".
9. FINAL PCB THICKNESS SHALL BE 0.062"  $\pm$  10% ACROSS PADS.
10. WARP/TWIST SHALL NOT EXCEED 0.010 INCH PER INCH.
11. FINISH SHALL BE LPI, BLUE S.M.O.B.C., BOTH SIDES.
12. SILKSCREEN WITH NONCONDUCTIVE WHITE EPOXY INK.
13. NO VENDOR MARKINGS OR ALTERATIONS SHALL BE PERMITTED ON ANY METAL OR SILKSCREEN LAYERS.
14. BOARD STACKUP:  
 TOP LAYER PLATED TO 1 OZ  
 PREPREG FR4: 12 MILS  $\pm$  1 MIL  
 L2-GND 1 OZ Cu  
 PREPREG FR4: 28 MILS  
 L3-POWER 1 OZ Cu  
 PREPREG FR4: 12 MILS  $\pm$  1 MIL  
 BOTTOM LAYER PLATED TO 1 OZ  
 PLATE IN ACCORDANCE WITH IPC-4552, 118-236uIN of NICKEL, WITH AN ADDITIONAL 2-6 uIN OF GOLD ON TOP.
- 15.

SIZE	QTY	SYM	PLATED	TOL
0.008	261	+	YES	$\pm$ 0.003"
0.006	91	X	YES	$\pm$ 0.003"
0.03	78	□	YES	$\pm$ 0.003"
0.125	2	◇	YES	$\pm$ 0.003"
0.04	2	⊗	YES	$\pm$ 0.003"
0.07	5	⊗	YES	$\pm$ 0.003"



SILICON LABS - UDP-0017-001 (UPPI-1020GM-915TR)

**Figure 23. UPPI-1020-fffTR Assembly Layer**



# UDP UPPI Card UG

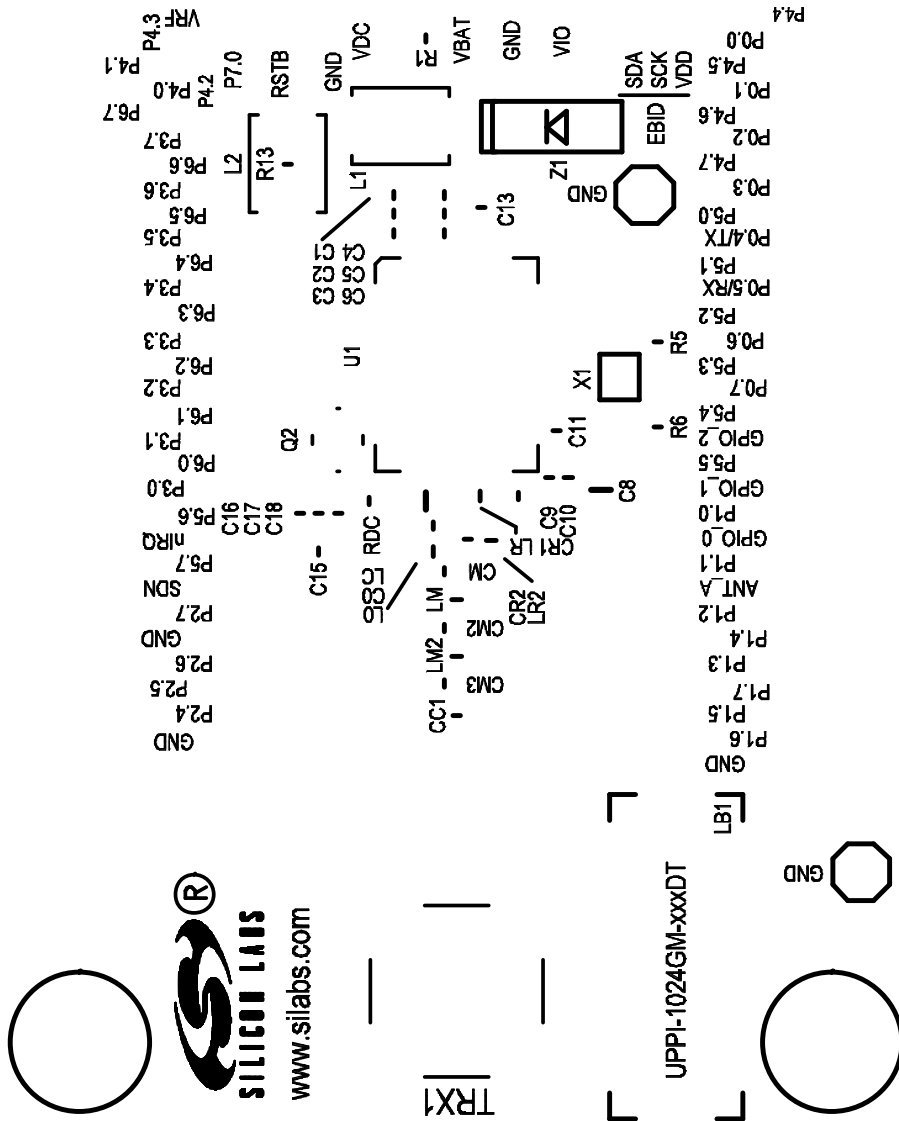


Figure 24. UPPI-1024-ffDT Silkscreen Top

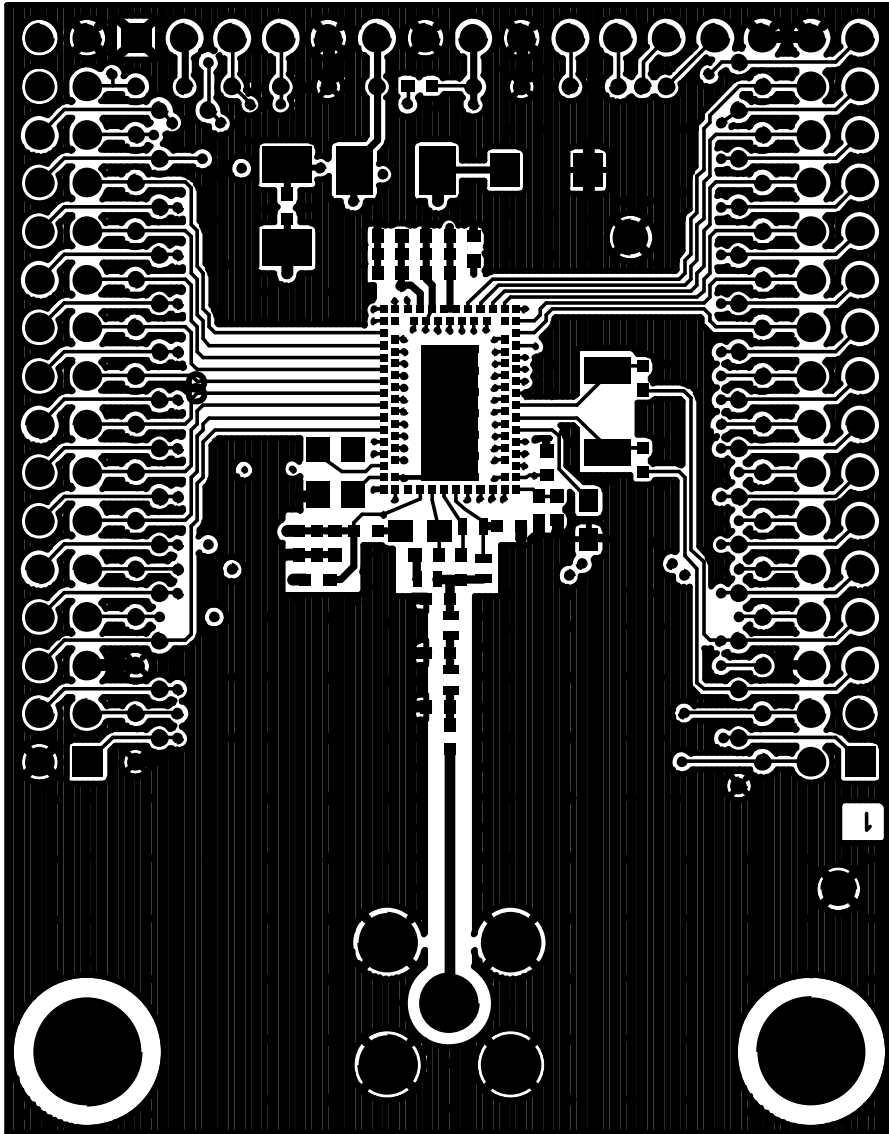


Figure 25. UPPI-1024-fffDT Top Side

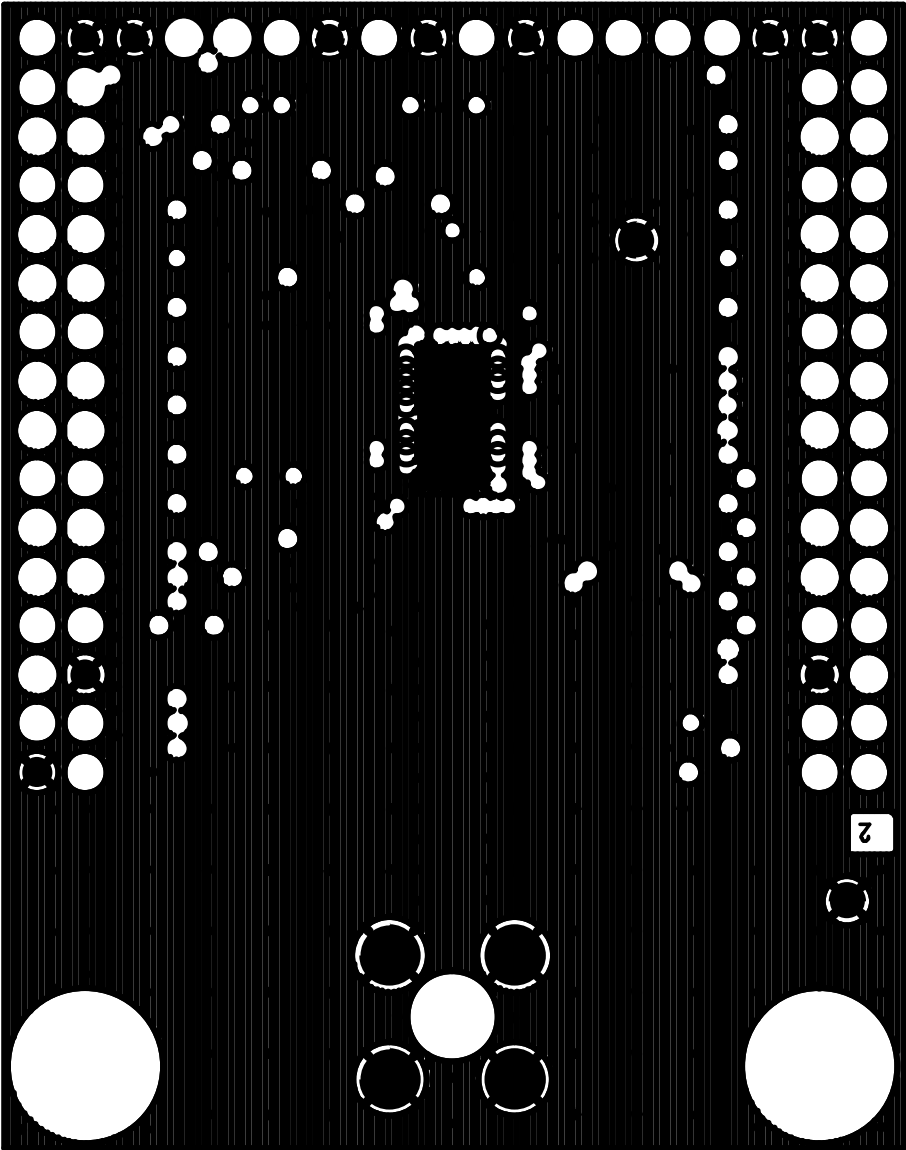


Figure 26. UPPI-1024-fffDT Layer 2

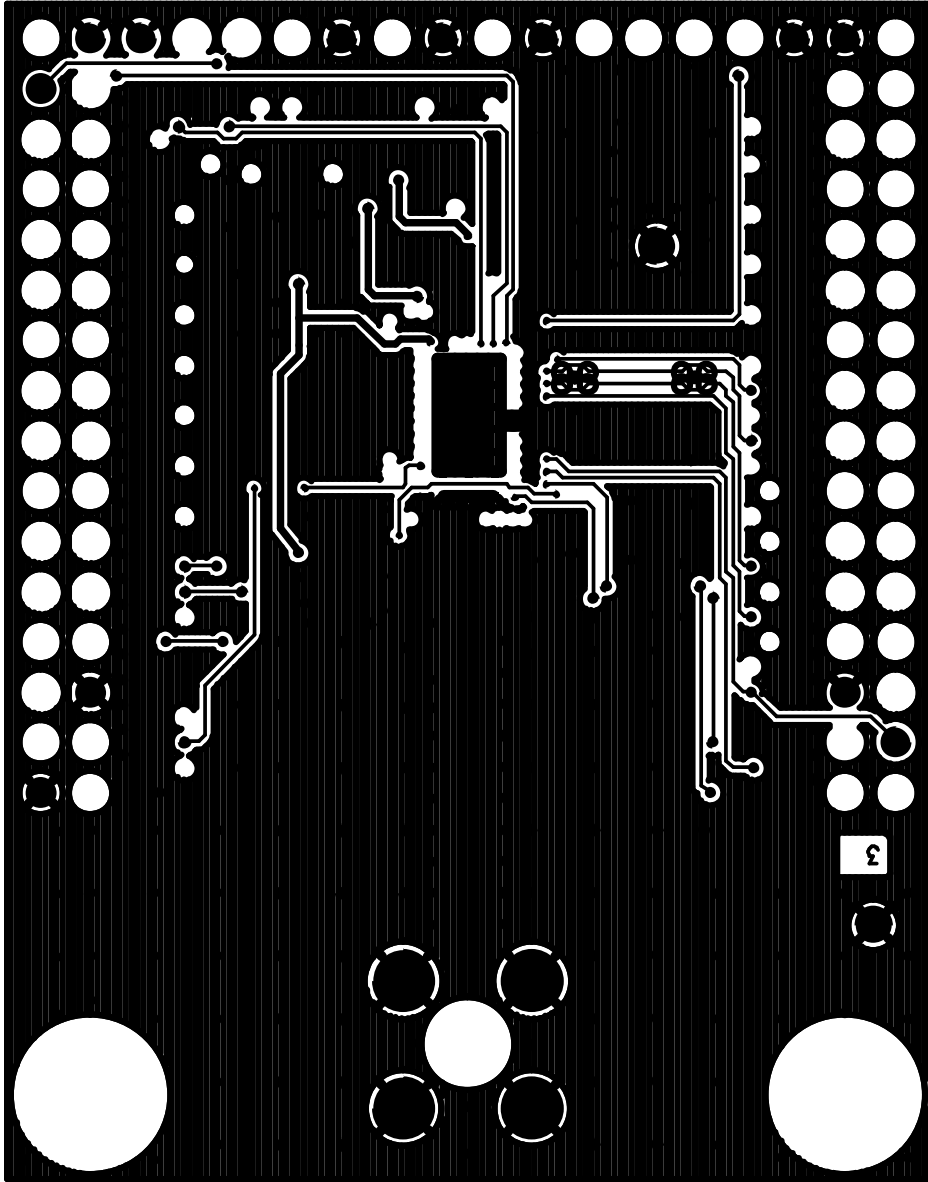


Figure 27. UPPI-1024-fffDT Layer 3

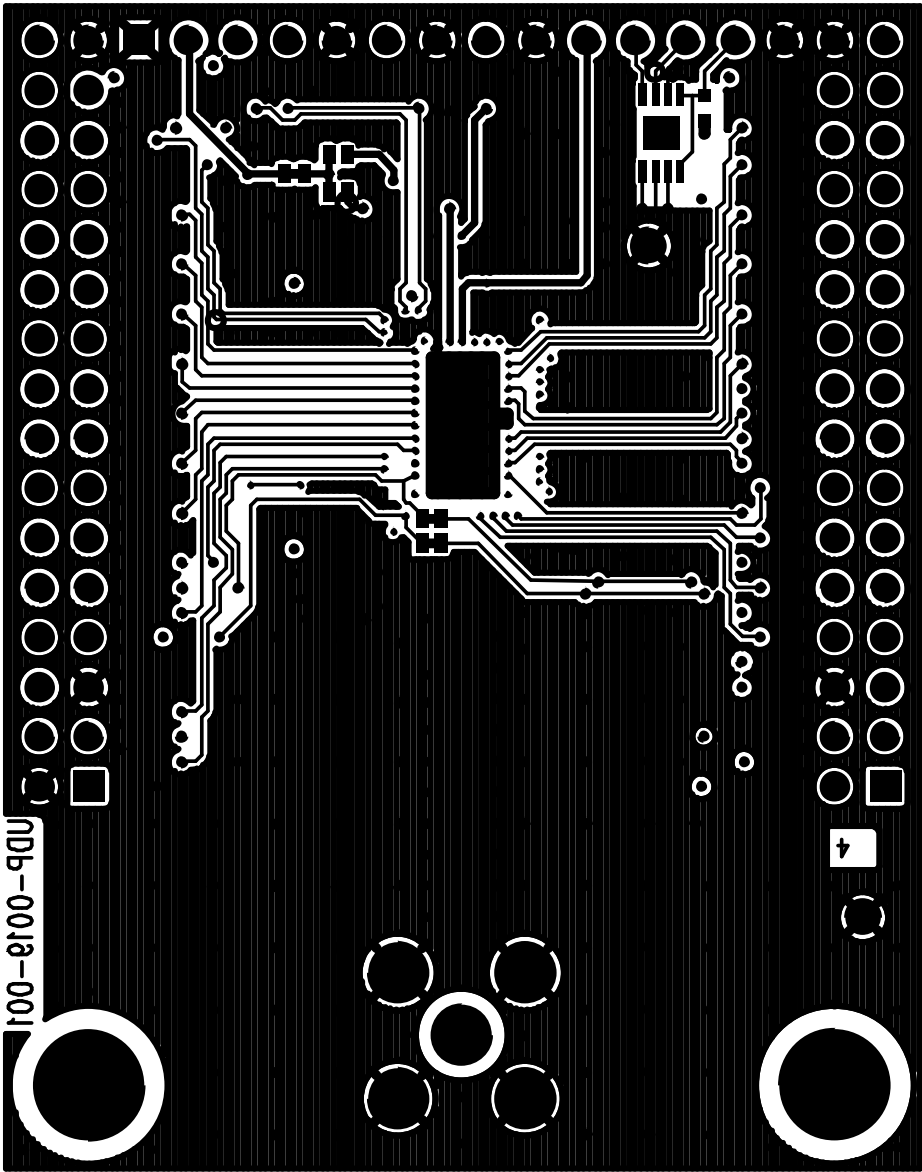
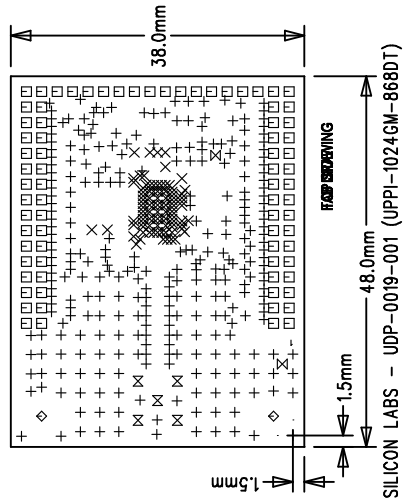
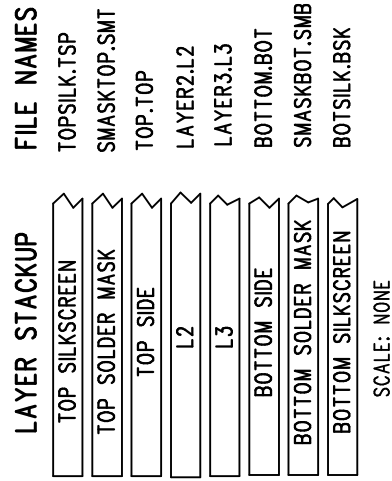


Figure 28. UPPI-1024-fffDT Bottom Side

**NOTES : UNLESS OTHERWISE SPECIFIED**

1. MANUFACTURE IN ACCORDANCE WITH IPC-6012, TYPE 3, CLASS 2.
2. END PRODUCT FEATURES SHALL NOT VARY MORE THAN 20% FROM ARTWORK ORIGINALS.
3. LAMINATE AND PREPREG SHALL BE AS PER IPC-4101/26,83,98 WITH A DECOMPOSITION TEMPERATURE  $\geq 345^{\circ}\text{C}$ , COLOR, NATURAL.
4. COPPER WEIGHT SHALL BE 1.0 OZ./SQ. FT. BEFORE PLATING, UNLESS OTHERWISE SPECIFIED.
5. ALL PLATED THROUGH HOLES SHALL HAVE A MINIMUM OF 0.001" COPPER.
6. DRILL HOLE TOLERANCE AFTER PLATING SHALL BE  $\pm 0.003$ ".
7. MINIMUM ANNULAR RING SHALL BE 0.001".
8. MINIMUM ANNULAR RING AT EMERGENT CONDUCTORS SHALL BE 0.003".
9. FINAL PCB THICKNESS SHALL BE 0.062"  $\pm 10\%$  ACROSS PADS.
10. WARP/TWIST SHALL NOT EXCEED 0.010 INCH PER INCH.
11. FINISH SHALL BE LPI, BLUE S.M.O.B.C., BOTH SIDES.
12. SILKSCREEN WITH NONCONDUCTIVE WHITE EPOXY INK.
13. NO VENDOR MARKINGS OR ALTERATIONS SHALL BE PERMITTED ON ANY METAL OR SILKSCREEN LAYERS.
14. BOARD STACKUP:
  - TOP LAYER PLATED TO 1 OZ
  - PREPREG FR4: 12 MILS  $\pm 1$  MIL
  - L2-GND 1 OZ Cu
  - PREPREG FR4: 28 MILS
  - L3-POWER 1 OZ Cu
  - PREPREG FR4: 12 MILS  $\pm 1$  MIL
  - BOTTOM LAYER PLATED TO 1 OZ
15. PLATE IN ACCORDANCE WITH IPC-4552, 118-236uIN OF NICKEL, WITH AN ADDITIONAL 2-6 uIN OF GOLD ON TOP.

SIZE	QTY	SYM	PLATED	TOL
0.008	291	+	YES	$\pm 0.003$ "
0.006	91	×	YES	$\pm 0.003$ "
0.03	78	□	YES	$\pm 0.003$ "
0.125	2	◇	YES	$\pm 0.003$ "
0.04	2	⊗	YES	$\pm 0.003$ "
0.07	5	⊗	YES	$\pm 0.003$ "



**Figure 29. UPPI-1024-ffDT Assembly Layer**

# UDP UPPI Card UG

---

## CONTACT INFORMATION

Silicon Laboratories Inc.  
400 West Cesar Chavez  
Austin, TX 78701  
Tel: 1+(512) 416-8500  
Fax: 1+(512) 416-9669  
Toll Free: 1+(877) 444-3032

Please visit the Silicon Labs Technical Support web page:  
<https://www.silabs.com/support/pages/contacttechnicalsupport.aspx>  
and register to submit a technical support request.

The information in this document is believed to be accurate in all respects at the time of publication but is subject to change without notice. Silicon Laboratories assumes no responsibility for errors and omissions, and disclaims responsibility for any consequences resulting from the use of information included herein. Additionally, Silicon Laboratories assumes no responsibility for the functioning of undescribed features or parameters. Silicon Laboratories reserves the right to make changes without further notice. Silicon Laboratories makes no warranty, representation or guarantee regarding the suitability of its products for any particular purpose, nor does Silicon Laboratories assume any liability arising out of the application or use of any product or circuit, and specifically disclaims any and all liability, including without limitation consequential or incidental damages. Silicon Laboratories products are not designed, intended, or authorized for use in applications intended to support or sustain life, or for any other application in which the failure of the Silicon Laboratories product could create a situation where personal injury or death may occur. Should Buyer purchase or use Silicon Laboratories products for any such unintended or unauthorized application, Buyer shall indemnify and hold Silicon Laboratories harmless against all claims and damages.

Silicon Laboratories and Silicon Labs are trademarks of Silicon Laboratories Inc.

Other products or brandnames mentioned herein are trademarks or registered trademarks of their respective holders.





## Стандарт Электрон Связь

Мы молодая и активно развивающаяся компания в области поставок электронных компонентов. Мы поставляем электронные компоненты отечественного и импортного производства напрямую от производителей и с крупнейших складов мира.

Благодаря сотрудничеству с мировыми поставщиками мы осуществляем комплексные и плановые поставки широчайшего спектра электронных компонентов.

Собственная эффективная логистика и склад в обеспечивает надежную поставку продукции в точно указанные сроки по всей России.

Мы осуществляем техническую поддержку нашим клиентам и предпродажную проверку качества продукции. На все поставляемые продукты мы предоставляем гарантию .

Осуществляем поставки продукции под контролем ВП МО РФ на предприятия военно-промышленного комплекса России , а также работаем в рамках 275 ФЗ с открытием отдельных счетов в уполномоченном банке. Система менеджмента качества компании соответствует требованиям ГОСТ ISO 9001.

Минимальные сроки поставки, гибкие цены, неограниченный ассортимент и индивидуальный подход к клиентам являются основой для выстраивания долгосрочного и эффективного сотрудничества с предприятиями радиоэлектронной промышленности, предприятиями ВПК и научно-исследовательскими институтами России.

С нами вы становитесь еще успешнее!

### Наши контакты:

**Телефон:** +7 812 627 14 35

**Электронная почта:** [sales@st-electron.ru](mailto:sales@st-electron.ru)

**Адрес:** 198099, Санкт-Петербург,  
Промышленная ул, дом № 19, литера Н,  
помещение 100-Н Офис 331