



MICROCHIP

MCP23X17
Evaluation Board
User's Guide

Note the following details of the code protection feature on Microchip devices:

- Microchip products meet the specification contained in their particular Microchip Data Sheet.
- Microchip believes that its family of products is one of the most secure families of its kind on the market today, when used in the intended manner and under normal conditions.
- There are dishonest and possibly illegal methods used to breach the code protection feature. All of these methods, to our knowledge, require using the Microchip products in a manner outside the operating specifications contained in Microchip's Data Sheets. Most likely, the person doing so is engaged in theft of intellectual property.
- Microchip is willing to work with the customer who is concerned about the integrity of their code.
- Neither Microchip nor any other semiconductor manufacturer can guarantee the security of their code. Code protection does not mean that we are guaranteeing the product as "unbreakable."

Code protection is constantly evolving. We at Microchip are committed to continuously improving the code protection features of our products. Attempts to break Microchip's code protection feature may be a violation of the Digital Millennium Copyright Act. If such acts allow unauthorized access to your software or other copyrighted work, you may have a right to sue for relief under that Act.

Information contained in this publication regarding device applications and the like is provided only for your convenience and may be superseded by updates. It is your responsibility to ensure that your application meets with your specifications. MICROCHIP MAKES NO REPRESENTATIONS OR WARRANTIES OF ANY KIND WHETHER EXPRESS OR IMPLIED, WRITTEN OR ORAL, STATUTORY OR OTHERWISE, RELATED TO THE INFORMATION, INCLUDING BUT NOT LIMITED TO ITS CONDITION, QUALITY, PERFORMANCE, MERCHANTABILITY OR FITNESS FOR PURPOSE. Microchip disclaims all liability arising from this information and its use. Use of Microchip devices in life support and/or safety applications is entirely at the buyer's risk, and the buyer agrees to defend, indemnify and hold harmless Microchip from any and all damages, claims, suits, or expenses resulting from such use. No licenses are conveyed, implicitly or otherwise, under any Microchip intellectual property rights.

Trademarks

The Microchip name and logo, the Microchip logo, Accuron, dsPIC, KEELOQ, microID, MPLAB, PIC, PICmicro, PICSTART, PRO MATE, PowerSmart, rfPIC and SmartShunt are registered trademarks of Microchip Technology Incorporated in the U.S.A. and other countries.

AmpLab, FilterLab, Migratable Memory, MXDEV, MXLAB, SEEVAL, SmartSensor and The Embedded Control Solutions Company are registered trademarks of Microchip Technology Incorporated in the U.S.A.

Analog-for-the-Digital Age, Application Maestro, CodeGuard, dsPICDEM, dsPICDEM.net, dsPICworks, ECAN, ECONOMONITOR, FanSense, FlexROM, fuzzyLAB, In-Circuit Serial Programming, ICSP, ICEPIC, Linear Active Thermistor, Mindi, MiWi, MPASM, MPLIB, MPLINK, PICKIT, PICDEM, PICDEM.net, PICLAB, PICTail, PowerCal, PowerInfo, PowerMate, PowerTool, REAL ICE, rFLAB, rfPICDEM, Select Mode, Smart Serial, SmartTel, Total Endurance, UNI/O, WiperLock and ZENA are trademarks of Microchip Technology Incorporated in the U.S.A. and other countries.

SQTP is a service mark of Microchip Technology Incorporated in the U.S.A.

All other trademarks mentioned herein are property of their respective companies.

© 2006, Microchip Technology Incorporated, Printed in the U.S.A., All Rights Reserved.

 Printed on recycled paper.

**QUALITY MANAGEMENT SYSTEM
CERTIFIED BY DNV
== ISO/TS 16949:2002 ==**

Microchip received ISO/TS-16949:2002 certification for its worldwide headquarters, design and wafer fabrication facilities in Chandler and Tempe, Arizona, Gresham, Oregon and Mountain View, California. The Company's quality system processes and procedures are for its PICmicro® 8-bit MCUs, KEELOQ® code hopping devices, Serial EEPROMs, microperipherals, nonvolatile memory and analog products. In addition, Microchip's quality system for the design and manufacture of development systems is ISO 9001:2000 certified.

Table of Contents

| | |
|---|-----------|
| Preface | 1 |
| Introduction..... | 1 |
| Document Layout | 1 |
| Conventions Used in this Guide | 2 |
| Recommended Reading..... | 2 |
| The Microchip Web Site | 3 |
| Customer Support | 3 |
| Document Revision History | 3 |
| Chapter 1. Product Overview | |
| 1.1 Introduction | 5 |
| 1.2 What is the MCP23X17 Evaluation Board? | 5 |
| 1.3 What the MCP23X17 Evaluation Board Kit Includes | 5 |
| Chapter 2. Installation and Operation | |
| 2.1 Introduction | 7 |
| 2.2 Features | 7 |
| 2.3 Getting Started | 8 |
| 2.4 MCP23X17 Evaluation Board Description | 9 |
| 2.5 Firmware Description | 9 |
| Appendix A. Schematic and Layouts | |
| A.1 Introduction | 11 |
| A.2 Board Schematic (Page 1) | 12 |
| A.3 Board Schematic (Page 2) | 13 |
| A.4 Board Schematic (Page 3) | 14 |
| A.5 Board - Top Layer (with silk screen) | 15 |
| A.6 Board - Bottom Layer | 16 |
| Appendix B. Bill Of Materials (BOM) | |
| Worldwide Sales and Service | 18 |

MCP23X17 Evaluation Board User's Guide

NOTES:



MCP23X17 EVALUATION BOARD USER'S GUIDE

Preface

NOTICE TO CUSTOMERS

All documentation becomes dated, and this manual is no exception. Microchip tools and documentation are constantly evolving to meet customer needs, so some actual dialogs and/or tool descriptions may differ from those in this document. Please refer to our web site (www.microchip.com) to obtain the latest documentation available.

Documents are identified with a “DS” number. This number is located on the bottom of each page, in front of the page number. The numbering convention for the DS number is “DSXXXXA”, where “XXXX” is the document number and “A” is the revision level of the document.

INTRODUCTION

This chapter contains general information that will be useful to know before using the MCP23X17 Evaluation Board. Items discussed in this chapter include:

- Document Layout
- Conventions Used in this Guide
- Recommended Reading
- The Microchip Web Site
- Customer Support
- Document Revision History

DOCUMENT LAYOUT

This document describes how to use the MCP23X17 Evaluation Board as a development tool to emulate and debug firmware on a target board. The manual layout is as follows:

- **Chapter 1. “Product Overview”** – Important information about the MCP23X17 Evaluation Board.
- **Chapter 2. “Installation and Operation”** – Includes instructions on how to get started with the MCP23X17 Evaluation Board.
- **Appendix A. “Schematic and Layouts”** – Shows the schematic and layout diagrams for the MCP23X17 Evaluation Board.
- **Appendix B. “Bill Of Materials (BOM)”** – Lists the parts used to build the MCP23X17 Evaluation Board.

MCP23X17 Evaluation Board User's Guide

CONVENTIONS USED IN THIS GUIDE

This manual uses the following documentation conventions:

DOCUMENTATION CONVENTIONS

| Description | Represents | Examples |
|--|--|---|
| Arial font: | | |
| Italic characters | Referenced books | <i>MPLAB[®] IDE User's Guide</i> |
| | Emphasized text | ...is the <i>only</i> compiler... |
| Initial caps | A window | the Output window |
| | A dialog | the Settings dialog |
| | A menu selection | select Enable Programmer |
| Quotes | A field name in a window or dialog | "Save project before build" |
| Underlined, italic text with right angle bracket | A menu path | <u><i>File>Save</i></u> |
| Bold characters | A dialog button | Click OK |
| | A tab | Click the Power tab |
| N'Rnnnn | A number in Verilog [®] format, where N is the total number of digits, R is the radix and n is a digit. | 4'b0010, 2'hF1 |
| Text in angle brackets < > | A key on the keyboard | Press <Enter>, <F1> |
| Courier New font: | | |
| Plain Courier New | Sample source code | #define START |
| | Filenames | autoexec.bat |
| | File paths | c:\mcc18\h |
| | Keywords | _asm, _endasm, static |
| | Command-line options | -Opa+, -Opa- |
| | Bit values | 0, 1 |
| | Constants | 0xFF, 'A' |
| Italic Courier New | A variable argument | <i>file.o</i> , where <i>file</i> can be any valid filename |
| Square brackets [] | Optional arguments | mcc18 [options] <i>file</i> [options] |
| Curly brackets and pipe character: { } | Choice of mutually exclusive arguments; an OR selection | errorlevel {0 1} |
| Ellipses... | Replaces repeated text | var_name [, var_name...] |
| | Represents code supplied by user | void main (void) { ... } |

RECOMMENDED READING

For more information regarding the Stand-Alone CAN controller, CAN I/O expander, and CAN transceiver devices, refer to the appropriate data sheet. Table 1-1 shows the device and associated data sheet literature number. These documents can be downloaded from the Microchip web site at: www.microchip.com.

TABLE 1-1: DEVICES AND DATA SHEET LITERATURE NUMBERS

| Device | Literature # | Device | Literature # |
|-----------------|--------------|------------------|--------------|
| MCP23X17 | DS21952 | PIC16F818 | DS39598 |

THE MICROCHIP WEB SITE

Microchip provides online support via our web site at www.microchip.com. This web site is used as a means to make files and information easily available to customers. Accessible by using your favorite Internet browser, the web site contains the following information:

- **Product Support** – Data sheets and errata, application notes and sample programs, design resources, user's guides and hardware support documents, latest software releases and archived software
- **General Technical Support** – Frequently Asked Questions (FAQs), technical support requests, online discussion groups, Microchip consultant program member listing
- **Business of Microchip** – Product selector and ordering guides, latest Microchip press releases, listing of seminars and events, listings of Microchip sales offices, distributors and factory representatives

CUSTOMER SUPPORT

Users of Microchip products can receive assistance through several channels:

- Distributor or Representative
- Local Sales Office
- Field Application Engineer (FAE)
- Technical Support
- Development Systems Information Line

Customers should contact their distributor, representative or field application engineer for support. Local sales offices are also available to help customers. A listing of sales offices and locations is included in the back of this document.

Technical support is available through the web site at: <http://support.microchip.com>

DOCUMENT REVISION HISTORY

Revision B (August 2006)

- Add disclaimer to Bill of Materials regarding RoHS-Compliant part numbers.

Revision A (January 2006)

- Initial Release of this Document.

MCP23X17 Evaluation Board User's Guide

NOTES:

Chapter 1. Product Overview

1.1 INTRODUCTION

This chapter provides an overview of the MCP23X17 Evaluation Board and covers the following topics:

- What is the MCP23X17 Evaluation Board?
- What the MCP23X17 Evaluation Board kit includes

1.2 WHAT IS THE MCP23X17 EVALUATION BOARD?

The MCP23X17 Evaluation Board allows the system designer to evaluate the operation of the MCP23X17 General Purpose I/O (GPIO) expander. The board demonstrates the MCP23X17 performance in a simple circuit (4 inputs and 12 outputs).

1.3 WHAT THE MCP23X17 EVALUATION BOARD KIT INCLUDES

This MCP23X17 Evaluation Board Kit includes:

- One MCP23X17 Evaluation Board
 - MCP23017 GPIO Expander with I²C™ interface (installed)
 - MCP23S17 GPIO Expander with SPI interface (installed)
- One AIPD Evaluation Board
- Analog and Interface Products Demonstration Boards CD-ROM (DS21912)
 - MCP23X17 Evaluation Board User's Guide (DS51592)

MCP23X17 Evaluation Board User's Guide

NOTES:

Chapter 2. Installation and Operation

2.1 INTRODUCTION

This chapter discusses the setup and operation of the MCP23X17 Evaluation Board. The MCP23X17 Evaluation Board is designed to demonstrate simple, low-cost input/output expansion using the MCP23X17 devices and a low-cost PICmicro[®] microcontroller.

Four MCP23X17 pins are configured as inputs and connected to four momentary push buttons. The remaining twelve GPIO pins are configured as outputs and connected to LEDs. Each button causes the LEDs to sequence in a predetermined pattern.

The MCP23X17 is provided in small, space-saving 18-lead SSOP packages.

2.2 FEATURES

The MCP23X17 Evaluation Board has the following features:

- Two 16-bit GPIO Expanders
 - MCP23017 with I²C interface
 - MCP23S17 with SPI interface
- Slide switch for selecting between the two GPIO expanders.
- Four momentary buttons and twelve LEDs, each connected to an individual GPIO pin to demonstrate the input/output functionality of the MCP23X17.
- Headers for the MCP23X17 pins to allow evaluation in a user defined application.
- Jumpers (not populated, but shorted by a trace on the bottom of the PCB) to isolate the MCP23X17 from the LEDs and buttons, so they can be evaluated in a custom circuit.
- Header for programming the PIC16F818.

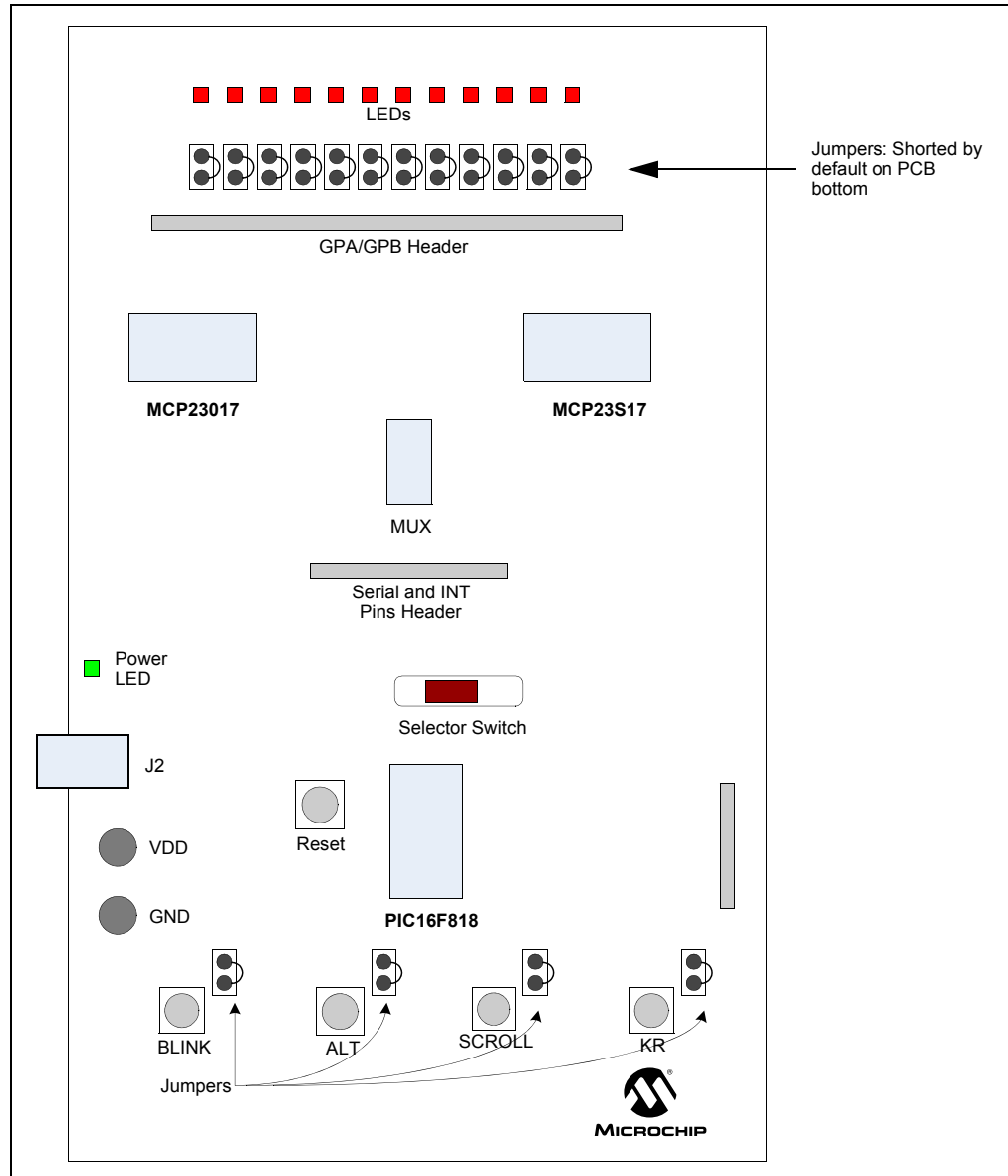
MCP23X17 Evaluation Board User's Guide

2.3 GETTING STARTED

The MCP23X17 Evaluation Board is a fully functional, assembled and tested board for evaluation of the MCP23017 (I²C interface) and MCP23S17 (SPI interface) general purpose I/O expanders. The following describes the basic setup and operation (see Figure 2-1):

1. Either connect a 9V power supply into the power jack (J2) or connect a 5V power supply to the V_{DD} and GND test points.
2. The green power LED will illuminate.
3. The device selector slide switch selects between the two devices. Slide the switch towards the device of choice.
4. On power-up, the LEDs will sequence in a slow scroll pattern.
5. Press a button and the LED sequencing will match the function defined by the button. For example, pressing the "Blink" button will cause the LEDs to continuously blink.

FIGURE 2-1: BOARD LAYOUT



2.4 MCP23X17 EVALUATION BOARD DESCRIPTION

2.4.1 Major Board Components

1. MCP23017 and MCP23S17 - The two devices under evaluation/demonstration. Both devices are connected to the same inputs and outputs and selector switch is used to select which device the PICmicro controls. A mux is used to route the serial (I²C or SPI) from the PICmicro to the MCP23X17.
2. LEDs - These are connected to the MCP23X17 GPIO configured as outputs.
3. Momentary Buttons - These are connected to the MCP23X17 configured as inputs.
4. PIC16F818 - Reads the selector switch and controls the MCP23X17 devices.
5. Headers - There are two headers which are connected to the MCP23X17 pins to allow off-board connections.
6. Jumpers - The jumpers are used to isolate the MCP23X17 pins so they can be connected to an off-board circuit. The jumpers are not populated, however, they are shorted by a trace on the bottom of the PCB.
7. Power - The boards can be powered by 9V via the power jack (J2) or by applying 5V directly to the power points (TP1 and TP2).

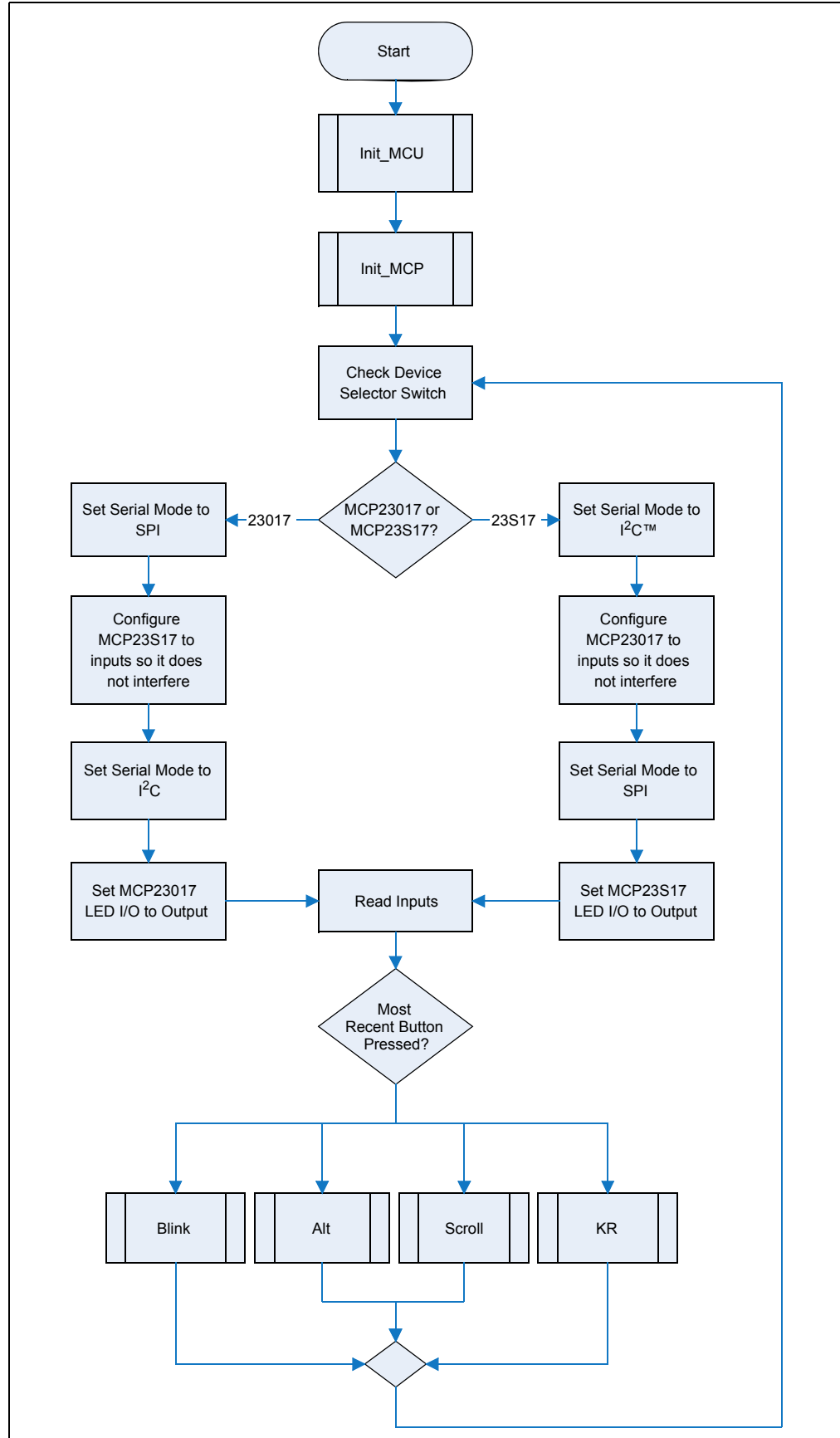
2.5 FIRMWARE DESCRIPTION

See Figure 2-2 for the main firmware flow diagram

1. The firmware first configures the PIC16F818 microcontroller.
2. The firmware configures the MCP23X17 devices (4-inputs, 12-outputs, enable interrupts, etc.).
3. The firmware checks the selector switch to determine which MCP23X17 to communicate with during the main loop.
4. The "other" MCP23X17 is configured to all inputs so that it does not cause contention on LED connections.
5. The MCP23X17 inputs are sampled.
6. The LEDs light up in a pattern as defined by the button which was pressed. If no button is pressed, the LEDs maintain the current sequence.

MCP23X17 Evaluation Board User's Guide

FIGURE 2-2: MAIN FIRMWARE FLOW





MCP23X17 EVALUATION BOARD USER'S GUIDE

Appendix A. Schematic and Layouts

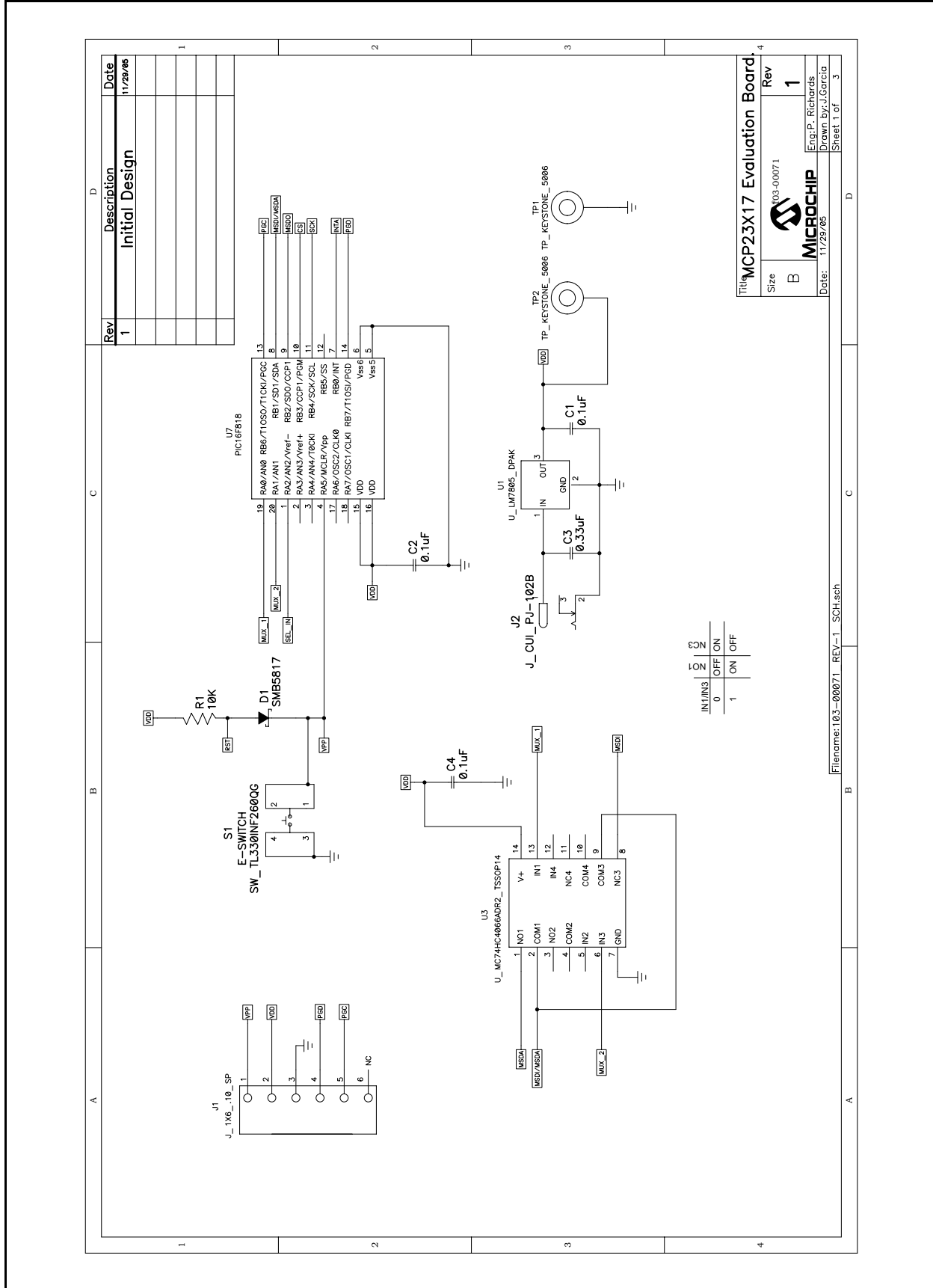
A.1 INTRODUCTION

This appendix contains the schematic and PCB layout for the MCP23X17 Evaluation Board. Diagrams included:

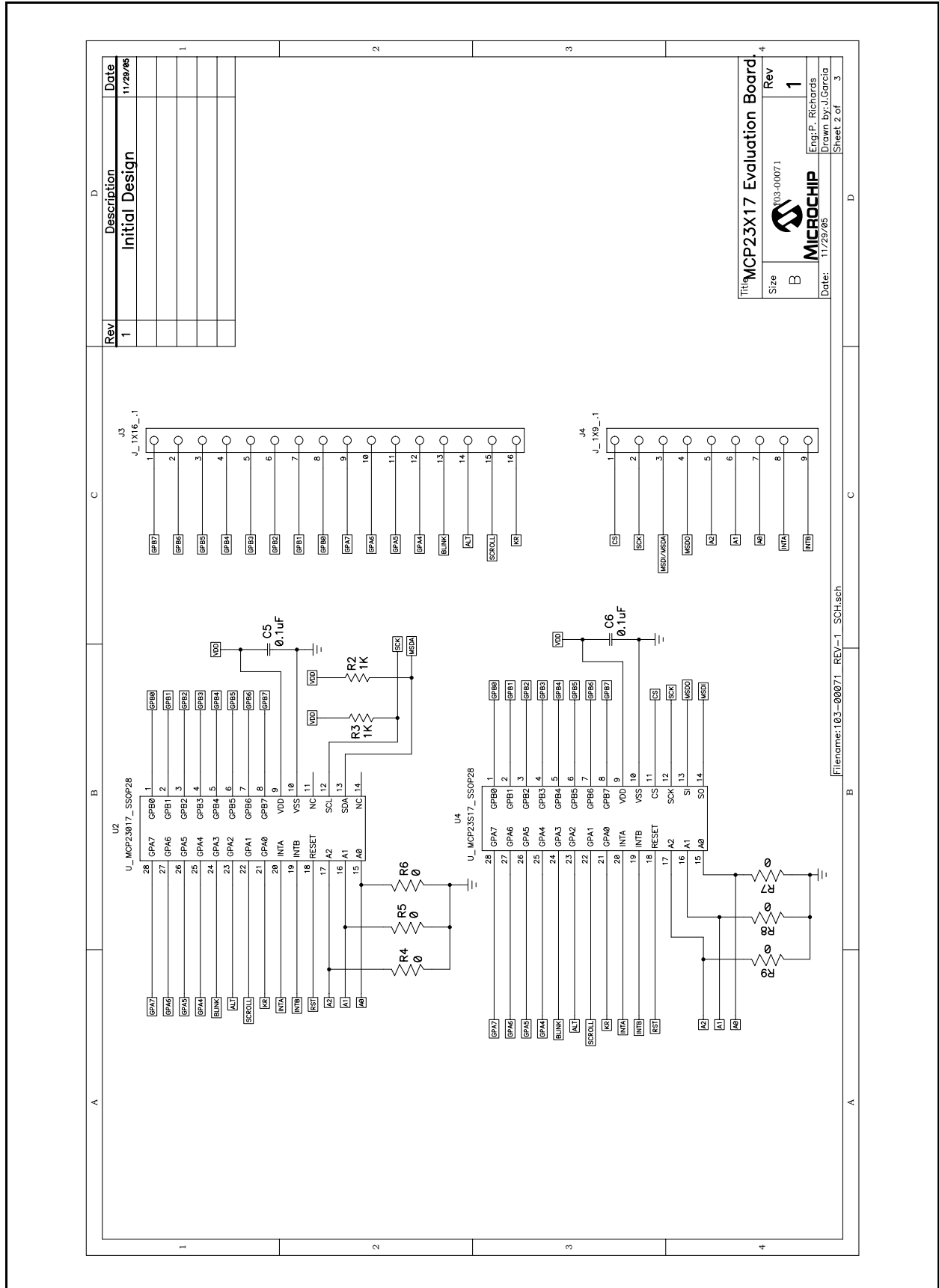
- Board Schematics (pages 1 thru 3)
- Board - Top Layer (with silk screen)
- Board - Bottom Layer

MCP23X17 Evaluation Board User's Guide

A.2 BOARD SCHEMATIC (PAGE 1)



A.3 BOARD SCHEMATIC (PAGE 2)



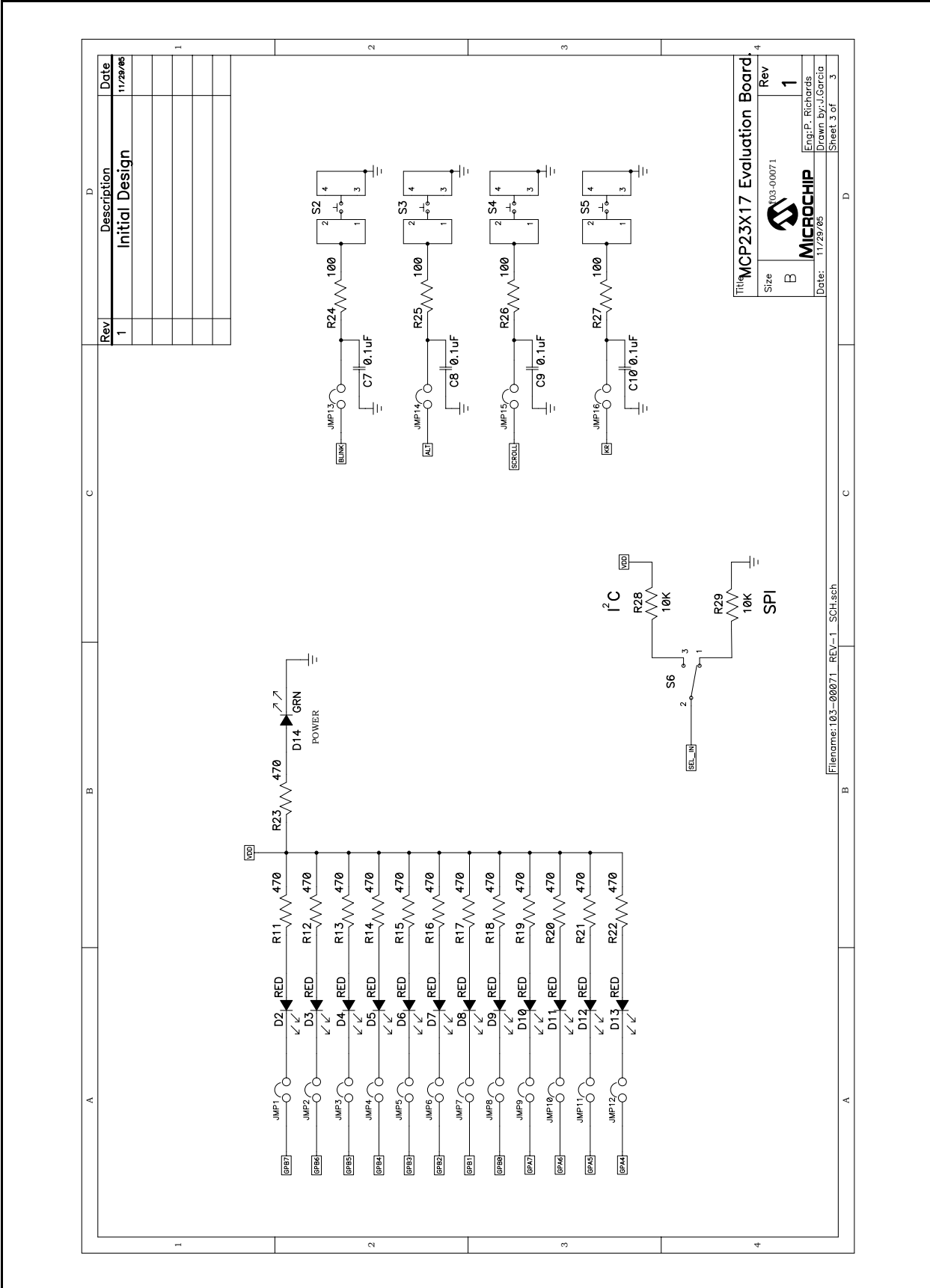
| Rev | Description | Date |
|-----|----------------|----------|
| 1 | Initial Design | 11/29/06 |
| | | |
| | | |
| | | |
| | | |

Title: MCP23X17 Evaluation Board
 Size: B
 Rev: 1
 Date: 11/29/06
 Eng: P. Richards
 Drawn by: J. Garcia
 Sheet 2 of 3

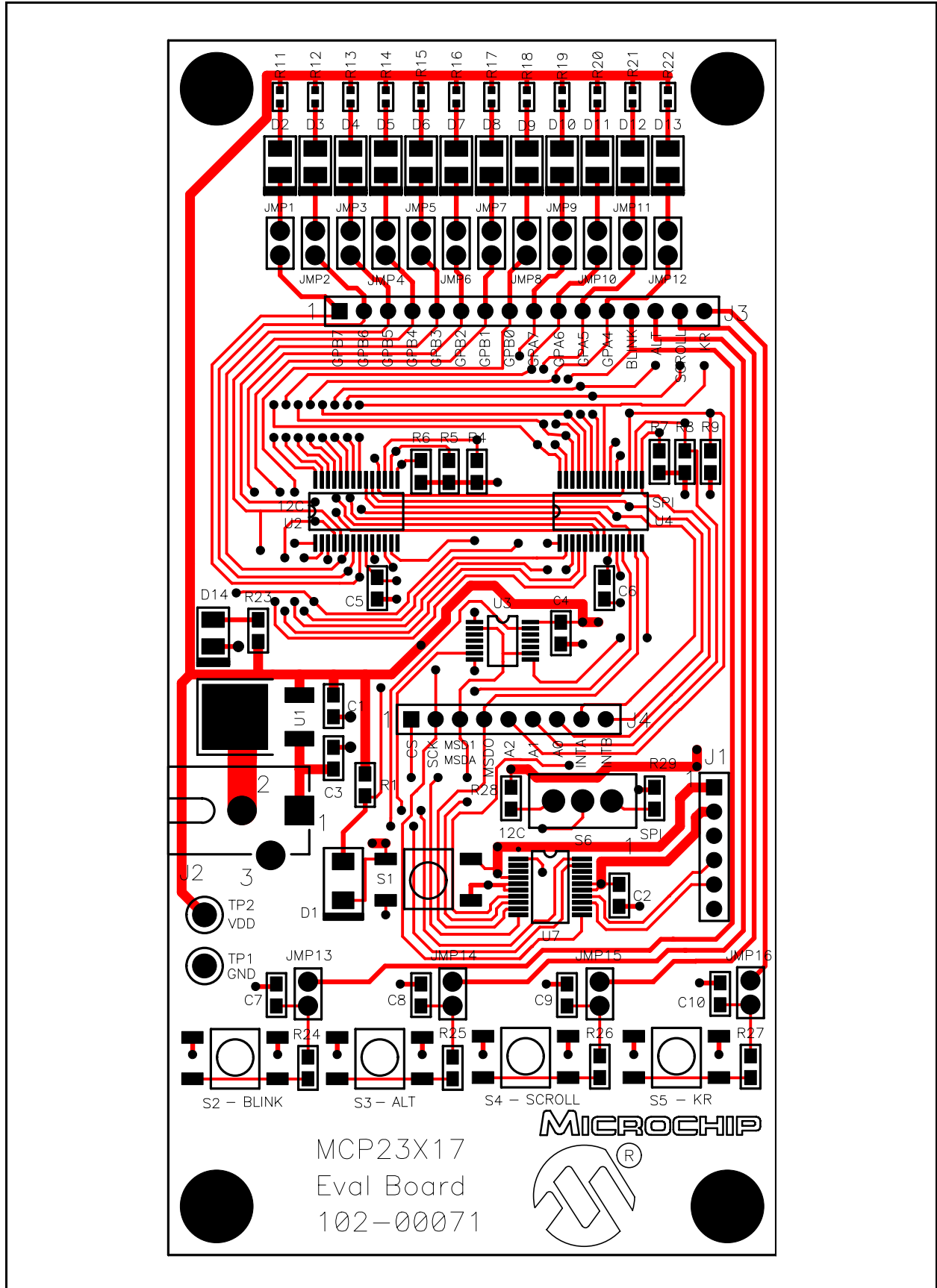
Filename: 103-00071_REV-1_SCH.sch

MCP23X17 Evaluation Board User's Guide

A.4 BOARD SCHEMATIC (PAGE 3)

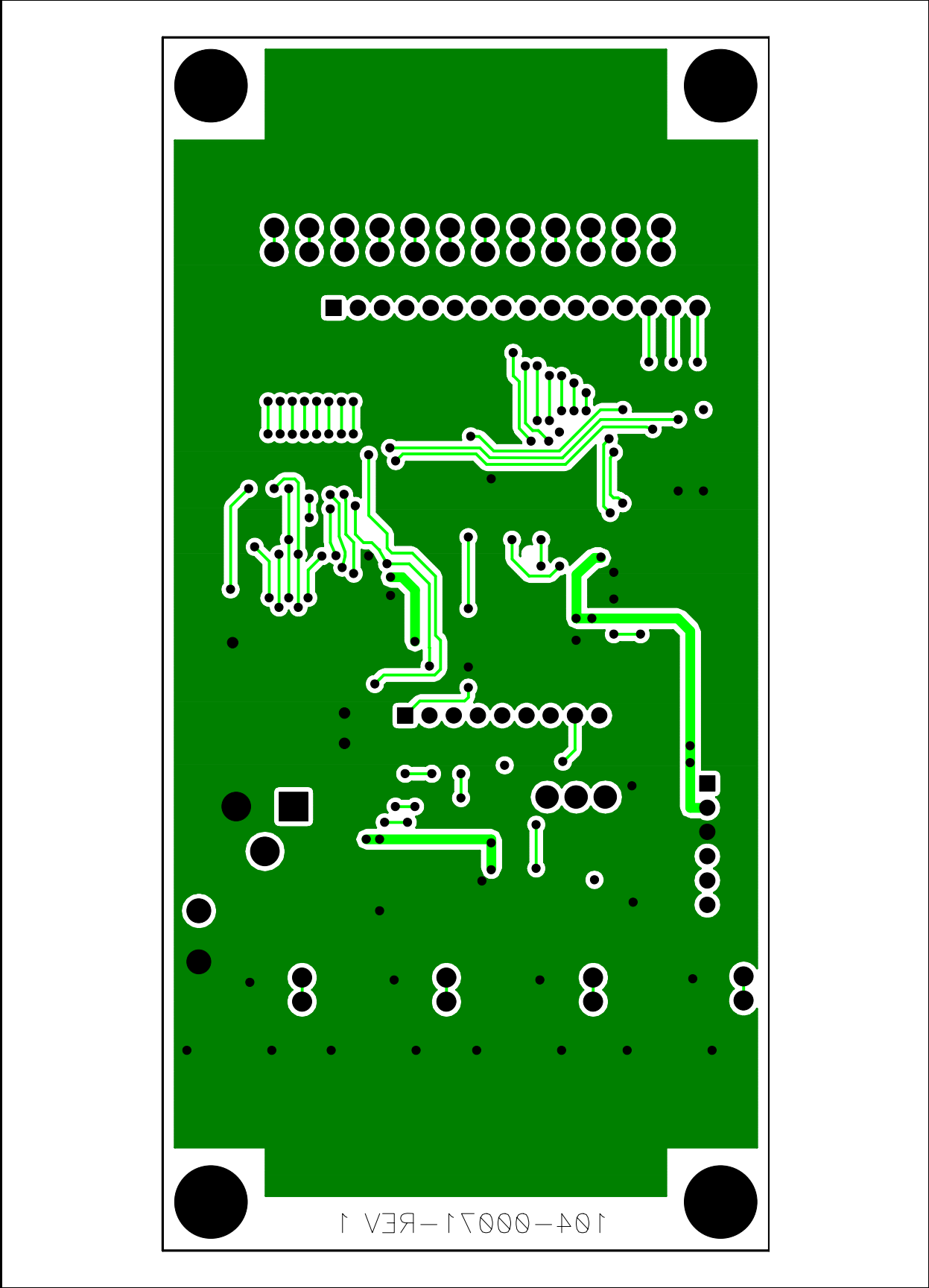


A.5 BOARD - TOP LAYER (WITH SILK SCREEN)



MCP23X17 Evaluation Board User's Guide

A.6 BOARD - BOTTOM LAYER



Appendix B. Bill Of Materials (BOM)

TABLE B-1: BILL OF MATERIALS (BOM)

| Qty | Reference | Description | Manufacturer | Part Number |
|-----|------------------------------------|---|-------------------------------------|--------------------|
| 9 | C1,C2,C4,C5, C6,C7C8,C9, C10 | CAP .1UF 16V CERAMIC X7R 0805 | Panasonic - ECG | ECJ-2VB1C104K |
| 1 | C3 | CAP CER .33UF 16V Y5V 0805 | Murata Electronics North America | GRM219F51C334ZA01D |
| 1 | D1 | RECT SCHOTTKY 1A 20V DO-214AA | Micro Commercial Co. | SMB5817-TP |
| 12 | D2 -D13 | LED RED 635NM PLCC 120DEG | LITE-ON INC. | LTST-T670EKT |
| 1 | D14 | LED GREEN 565NM PLCC 120DEG | LITE-ON INC. | LTST-T670GKT |
| 16 | JMP1- JMP16 | Do Not populate | — | — |
| 1 | J1 | Do Not populate | — | — |
| 1 | J4 | Do Not populate | — | — |
| 1 | J3 | Do Not populate | — | — |
| 1 | J2 | CONN POWER JACK 2.5MM PCB CIRC | CUI Inc. | PJ-102B |
| 1 | U7 | 18/20-Pin Enhanced Flash Microcontrol- lers with nanoWatt Technology | Microchip Technology Inc. | PIC16F818 |
| 12 | R11 - R22 | RES 475 OHM 1/10W 1% 0603 SMD | Panasonic - ECG | ERJ-3EKF4750V |
| 6 | R4 -R9 | RES 0.0 OHM 1/8W 5% 0805 SMD | Panasonic - ECG | ERJ-6GEY0R00V |
| 3 | R1,R28, R29 | RES 10.0K OHM 1/8W 1% 0805 SMD | Panasonic - ECG | ERJ-6ENF1002V |
| 4 | R24 -R27 | RES 100 OHM 1/8W 1% 0805 SMD | Panasonic - ECG | ERJ-6ENF1000V |
| 1 | R23 | RES 475 OHM 1/8W 1% 0805 SMD | Panasonic - ECG | ERJ-6ENF4750V |
| 1 | S6 | SWITCH,SLD,MIN,SPDT,ON-ON, | JAMECO VALUEPRO | G4050X |
| 5 | S1-S5 | SWITCH TACT 6MM SMD MOM 160GF | Omron Electronics Inc. | B3S-1000 |
| 1 | TP1 | TEST POINT PC MULTI PURPOSE BLK | Keystone Electronics | 5011 |
| 1 | TP2 | TEST POINT PC MULTI PURPOSE RED | Keystone Electronics | 5010 |
| 1 | U1 | IC POSITIVE REGULATOR 5V D2PAK | STMicroelectronics | L7805CD2T-TR |
| 1 | U3 | IC QUAD BILATERAL SWITCH 14TSSOP | Texas Instruments | CD74HC4066PWR |
| 1 | U4 | 16 Bit I/O Expander with Serial Interface | Microchip Technology Inc. | MCP23S17-E/SS |
| 1 | U2 | 16 Bit I/O Expander with Serial Interface | Microchip Technology Inc. | MCP23017-E/SS |

Note 1: The components listed in this Bill of Materials are representative of the PCB assembly. The released BOM used in manufacturing uses all RoHS-compliant components.



MICROCHIP

WORLDWIDE SALES AND SERVICE

AMERICAS

Corporate Office

2355 West Chandler Blvd.
Chandler, AZ 85224-6199
Tel: 480-792-7200
Fax: 480-792-7277
Technical Support:
<http://support.microchip.com>
Web Address:
www.microchip.com

Atlanta

Alpharetta, GA
Tel: 770-640-0034
Fax: 770-640-0307

Boston

Westborough, MA
Tel: 774-760-0087
Fax: 774-760-0088

Chicago

Itasca, IL
Tel: 630-285-0071
Fax: 630-285-0075

Dallas

Addison, TX
Tel: 972-818-7423
Fax: 972-818-2924

Detroit

Farmington Hills, MI
Tel: 248-538-2250
Fax: 248-538-2260

Kokomo

Kokomo, IN
Tel: 765-864-8360
Fax: 765-864-8387

Los Angeles

Mission Viejo, CA
Tel: 949-462-9523
Fax: 949-462-9608

Santa Clara

Santa Clara, CA
Tel: 408-961-6444
Fax: 408-961-6445

Toronto

Mississauga, Ontario,
Canada
Tel: 905-673-0699
Fax: 905-673-6509

ASIA/PACIFIC

Asia Pacific Office

Suites 3707-14, 37th Floor
Tower 6, The Gateway
Harbour City, Kowloon
Hong Kong
Tel: 852-2401-1200
Fax: 852-2401-3431

Australia - Sydney

Tel: 61-2-9868-6733
Fax: 61-2-9868-6755

China - Beijing

Tel: 86-10-8528-2100
Fax: 86-10-8528-2104

China - Chengdu

Tel: 86-28-8676-6200
Fax: 86-28-8676-6599

China - Fuzhou

Tel: 86-591-8750-3506
Fax: 86-591-8750-3521

China - Hong Kong SAR

Tel: 852-2401-1200
Fax: 852-2401-3431

China - Qingdao

Tel: 86-532-8502-7355
Fax: 86-532-8502-7205

China - Shanghai

Tel: 86-21-5407-5533
Fax: 86-21-5407-5066

China - Shenyang

Tel: 86-24-2334-2829
Fax: 86-24-2334-2393

China - Shenzhen

Tel: 86-755-8203-2660
Fax: 86-755-8203-1760

China - Shunde

Tel: 86-757-2839-5507
Fax: 86-757-2839-5571

China - Wuhan

Tel: 86-27-5980-5300
Fax: 86-27-5980-5118

China - Xian

Tel: 86-29-8833-7250
Fax: 86-29-8833-7256

ASIA/PACIFIC

India - Bangalore

Tel: 91-80-4182-8400
Fax: 91-80-4182-8422

India - New Delhi

Tel: 91-11-4160-8631
Fax: 91-11-4160-8632

India - Pune

Tel: 91-20-2566-1512
Fax: 91-20-2566-1513

Japan - Yokohama

Tel: 81-45-471-6166
Fax: 81-45-471-6122

Korea - Gumi

Tel: 82-54-473-4301
Fax: 82-54-473-4302

Korea - Seoul

Tel: 82-2-554-7200
Fax: 82-2-558-5932 or
82-2-558-5934

Malaysia - Penang

Tel: 60-4-646-8870
Fax: 60-4-646-5086

Philippines - Manila

Tel: 63-2-634-9065
Fax: 63-2-634-9069

Singapore

Tel: 65-6334-8870
Fax: 65-6334-8850

Taiwan - Hsin Chu

Tel: 886-3-572-9526
Fax: 886-3-572-6459

Taiwan - Kaohsiung

Tel: 886-7-536-4818
Fax: 886-7-536-4803

Taiwan - Taipei

Tel: 886-2-2500-6610
Fax: 886-2-2508-0102

Thailand - Bangkok

Tel: 66-2-694-1351
Fax: 66-2-694-1350

EUROPE

Austria - Wels

Tel: 43-7242-2244-3910
Fax: 43-7242-2244-393

Denmark - Copenhagen

Tel: 45-4450-2828
Fax: 45-4485-2829

France - Paris

Tel: 33-1-69-53-63-20
Fax: 33-1-69-30-90-79

Germany - Munich

Tel: 49-89-627-144-0
Fax: 49-89-627-144-44

Italy - Milan

Tel: 39-0331-742611
Fax: 39-0331-466781

Netherlands - Drunen

Tel: 31-416-690399
Fax: 31-416-690340

Spain - Madrid

Tel: 34-91-708-08-90
Fax: 34-91-708-08-91

UK - Wokingham

Tel: 44-118-921-5869
Fax: 44-118-921-5820

07/21/06



Стандарт Электрон Связь

Мы молодая и активно развивающаяся компания в области поставок электронных компонентов. Мы поставляем электронные компоненты отечественного и импортного производства напрямую от производителей и с крупнейших складов мира.

Благодаря сотрудничеству с мировыми поставщиками мы осуществляем комплексные и плановые поставки широчайшего спектра электронных компонентов.

Собственная эффективная логистика и склад в обеспечивает надежную поставку продукции в точно указанные сроки по всей России.

Мы осуществляем техническую поддержку нашим клиентам и предпродажную проверку качества продукции. На все поставляемые продукты мы предоставляем гарантию .

Осуществляем поставки продукции под контролем ВП МО РФ на предприятия военно-промышленного комплекса России , а также работаем в рамках 275 ФЗ с открытием отдельных счетов в уполномоченном банке. Система менеджмента качества компании соответствует требованиям ГОСТ ISO 9001.

Минимальные сроки поставки, гибкие цены, неограниченный ассортимент и индивидуальный подход к клиентам являются основой для выстраивания долгосрочного и эффективного сотрудничества с предприятиями радиоэлектронной промышленности, предприятиями ВПК и научно-исследовательскими институтами России.

С нами вы становитесь еще успешнее!

Наши контакты:

Телефон: +7 812 627 14 35

Электронная почта: sales@st-electron.ru

Адрес: 198099, Санкт-Петербург,
Промышленная ул, дом № 19, литера Н,
помещение 100-Н Офис 331