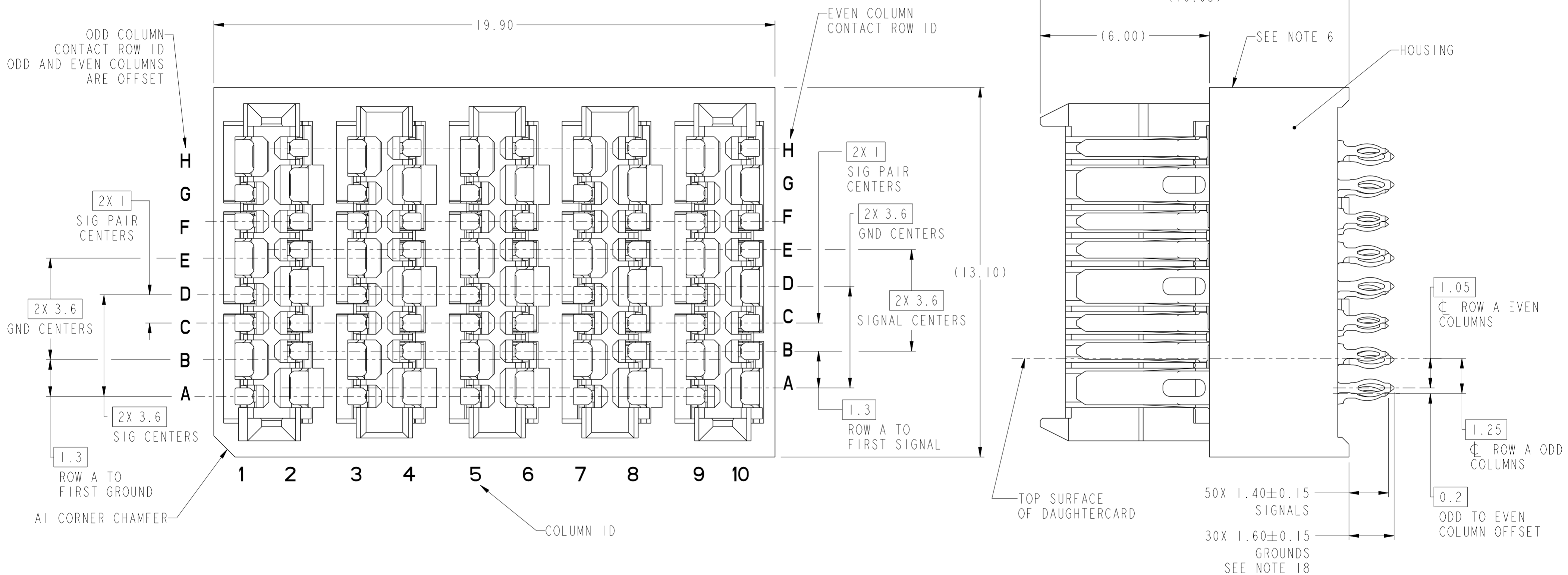


PRODUCT NUMBER  
SEE SHEET 16



10124414-Y01LF  
(10124414-101LF STANDARD MATE CONNECTOR SHOWN)

spec ref	---	dr	Daniel Xiao	2014/01/21	projection	MM	size	A2	scale	10:1	
tolerance std	ASME Y14.5M	eng	Peng-Bing Fu	2017/11/07			ecn no	ELX-DG-28204-1	rel level <b>Released</b>	rev <b>B</b>	
TOLERANCES UNLESS OTHERWISE SPECIFIED		chr	Justin Chen	2017/11/29			product family	ExaMAX			rel level
surface	linear 0.X ±.3 0.XX ±.10 0.XXX ±.050 angular 0° ±2°	appr	Heaven Cen	2017/11/30			title	ExaMAX VERTICAL HEADER ASS'Y, 2 PAIR, 80 POS, 10 IMLA			dwg no
		Amphenol FCI		cat. no.	SEE TABLE	Product - Customer Drw	sheet 1 of 17				

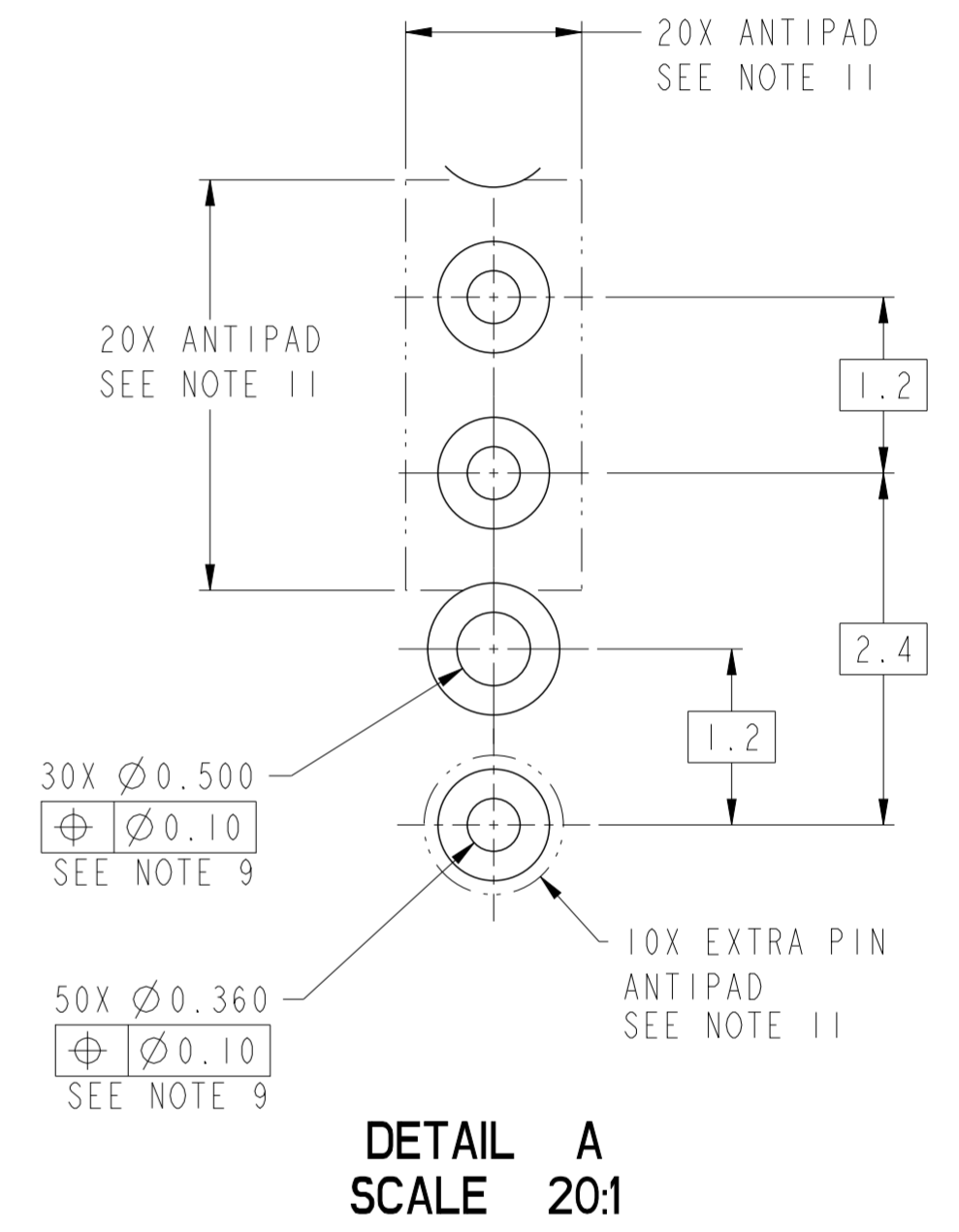
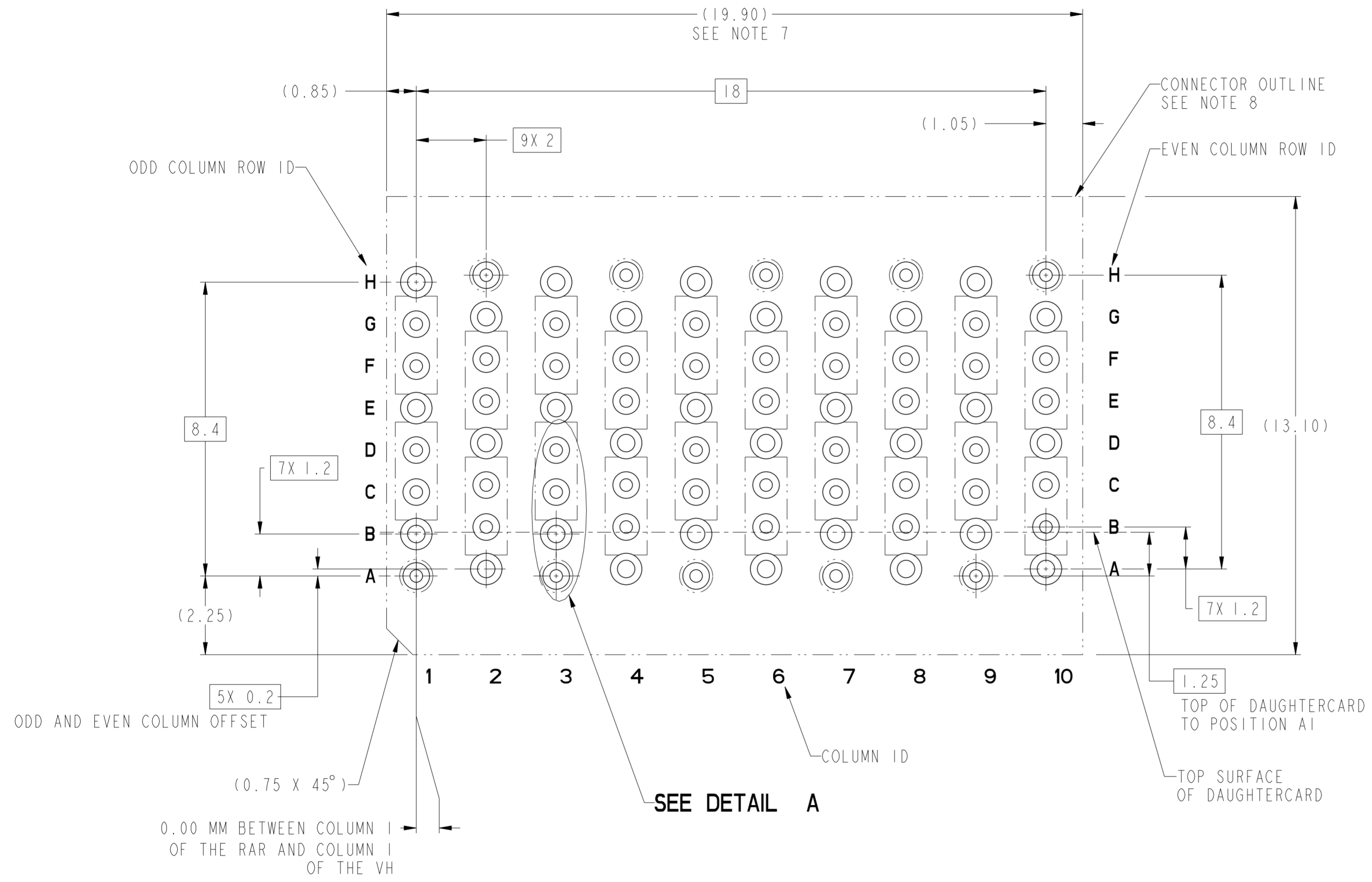
PDS: Rev :B

STATUS:Released

Printed: Dec 01, 2017

Amphenol FCI

© 2016 APCI



RECOMMENDED PCB LAYOUT FOR  
10124414-Y01LF COMPONENT SIDE  
SEE NOTES 7, 8, 9, & 11

spec ref	---	dr	Daniel Xiao	2014/01/21	projection	MM	size	A2	scale	10:1
tolerance std	ASME Y14.5M	eng	Peng-Bing Fu	2017/11/07			ecn no	ELX-DG-28204-1	rel level	Released
TOLERANCES UNLESS OTHERWISE SPECIFIED		chr	Justin Chen	2017/11/29						
		appr	Heaven Cen	2017/11/30						
surface	-	product family	ExaMAX		product family	ExaMAX	rel level	Released	rev	B
linear angular	0.X	±.3		title ExaMAX VERTICAL HEADER ASS'Y, 2 PAIR, 80 POS, 10 IMLA		cat. no. SEE TABLE	Product - Customer Drw	sheet 2 of 17		
	0.XX	±.10		title 10124414						
	0.XXX	±.050		title B						
	0°	±2°								

1 2 3 4 5 6 7 8

A

B

C

D

E

F

A

B

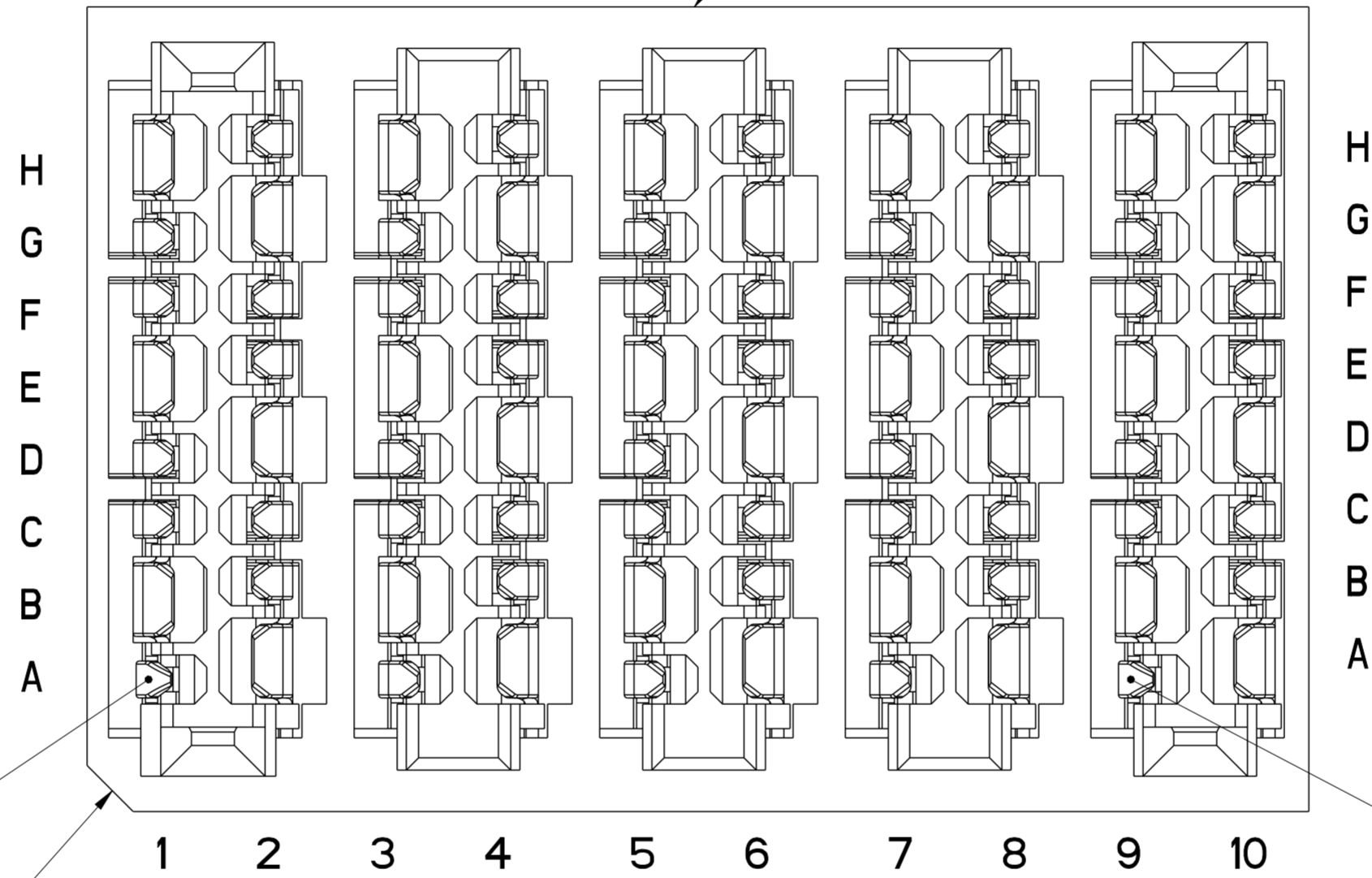
C

D

E

F

SEE NOTE 6



ADVANCED MATE POSITION A1  
SEE NOTE 13

A1 CORNER CHAMFER

ADVANCED MATE POSITION A9  
SEE NOTE 13

10124414-201LF  
ADVANCED MATE CONNECTOR  
ADVANCED MATE POSITIONS ARE POSITIONS A1 AND A9 ONLY  
FOR ALL OTHER DIMENSIONS SEE SHEETS 1 & 2

Amphenol  
FCi

© 2016 AFci

spec ref	---	dr	Daniel Xiao	2014/01/21	projection	MM	size	A2	scale	10:1
tolerance std	ASME Y14.5M	eng	Peng-Bing Fu	2017/11/07			ecn no	ELX-DG-28204-1		
TOLERANCES UNLESS OTHERWISE SPECIFIED		chr	Justin Chen	2017/11/29			rel level	Released		
		appr	Heaven Cen	2017/11/30			product family	ExaMAX		
surface	-				title ExaMAX VERTICAL HEADER ASS'Y, 2 PAIR, 80 POS, 10 IMLA		dwg no 10124414	rev B		
	linear	0.X	±.3		cat. no.	SEE TABLE	Product - Customer	Drw	sheet 3 of 17	
		0.XX	±.10							
		0.XXX	±.050							
	angular	0°	±2°							

PDS: Rev :B

STATUS:Released

Printed: Dec 01, 2017

1 2 3 4 5 6 7 8

A

B

C

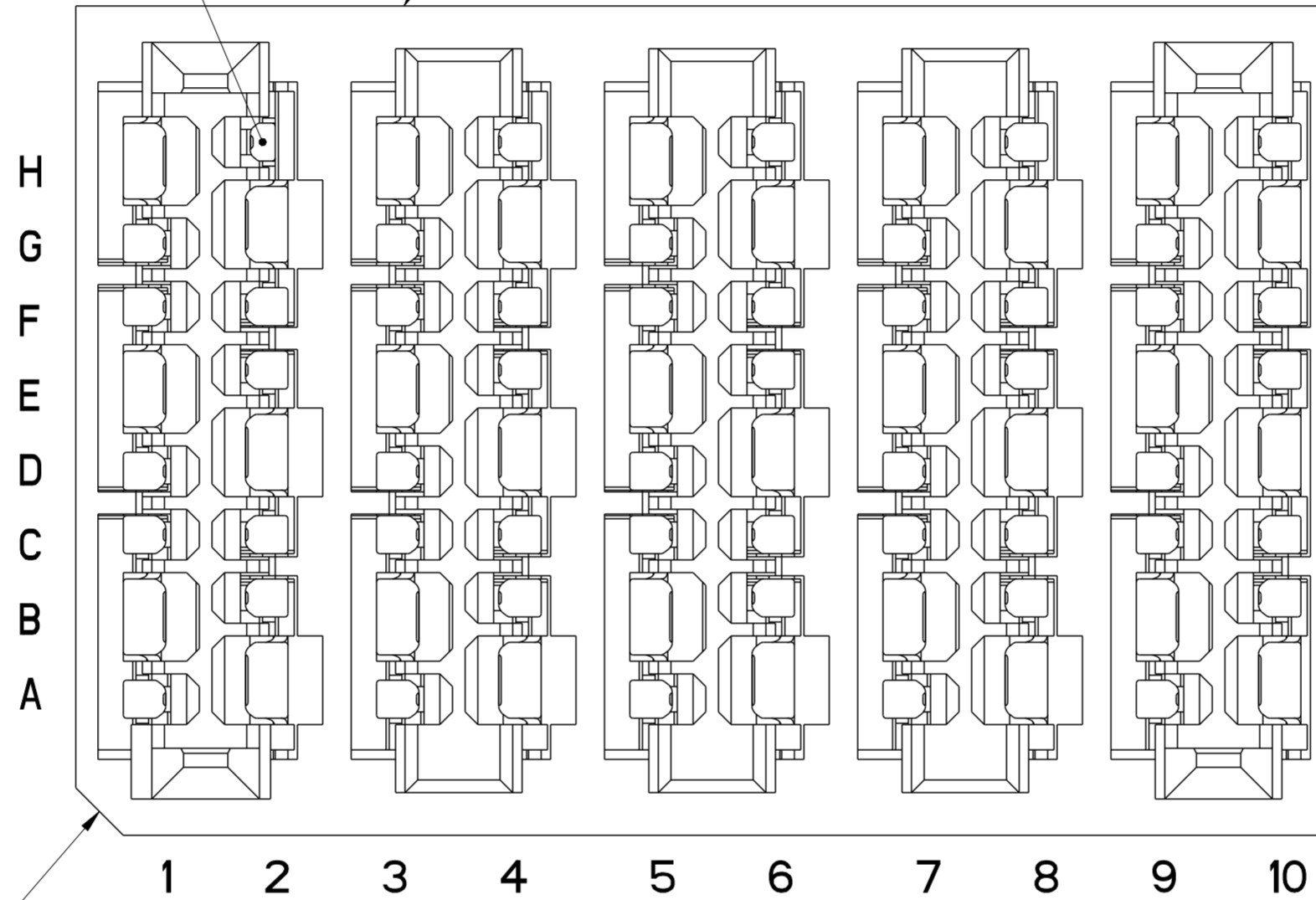
D

E

F

SHORT DETECT  
POSITION H2  
SEE NOTE 14

SEE NOTE 6



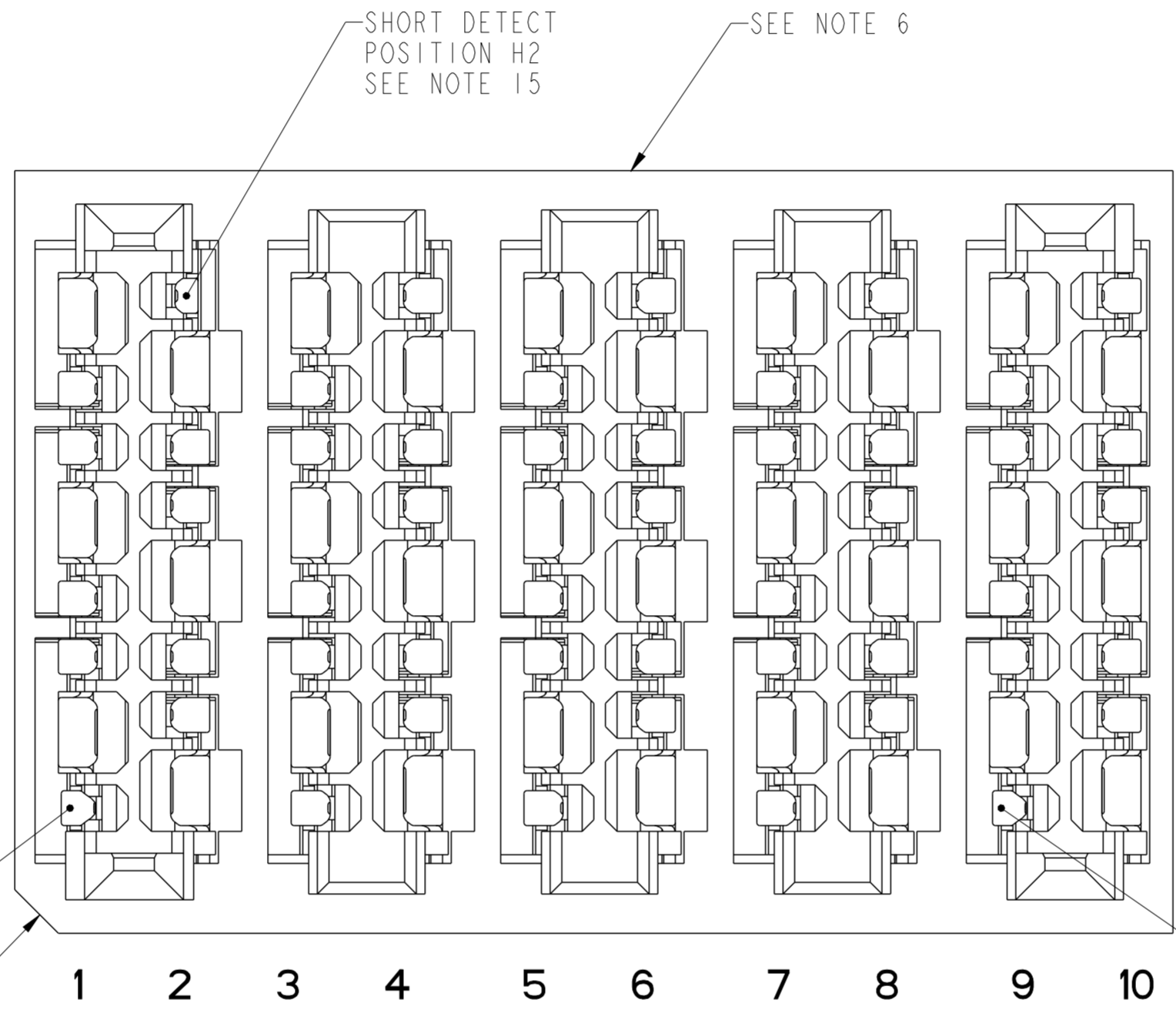
A1 CORNER CHAMFER

10124414-301LF  
SHORT DETECT CONNECTOR  
SHORT DETECT POSITION IS H2 ONLY  
FOR ALL OTHER DIMENSIONS SEE SHEETS 1 & 2

Amphenol  
FCi

© 2016 AFci

spec ref	---	dr	Daniel Xiao	2014/01/21	projection	MM	size	A2	scale	10:1												
tolerance std	ASME Y14.5M	eng	Peng-Bing Fu	2017/11/07			ecn no	ELX-DG-28204-1														
TOLERANCES UNLESS OTHERWISE SPECIFIED		chr	Justin Chen	2017/11/29			rel level	Released														
surface	<table border="1"> <tr> <td>linear</td> <td>0.X</td> <td>±.3</td> </tr> <tr> <td></td> <td>0.XX</td> <td>±.10</td> </tr> <tr> <td></td> <td>0.XXX</td> <td>±.050</td> </tr> <tr> <td>angular</td> <td>0°</td> <td>±2°</td> </tr> </table>	linear	0.X	±.3		0.XX	±.10		0.XXX	±.050	angular	0°	±2°	appr	Heaven Cen	2017/11/30	product family	ExaMAX		rel level	Released	
linear	0.X	±.3																				
	0.XX	±.10																				
	0.XXX	±.050																				
angular	0°	±2°																				
				title ExaMAX VERTICAL HEADER ASS'Y, 2 PAIR, 80 POS, 10 IMLA		dwg no 10124414	rev B															
				cat. no. SEE TABLE		Product - Customer Drw		sheet 4 of 17														

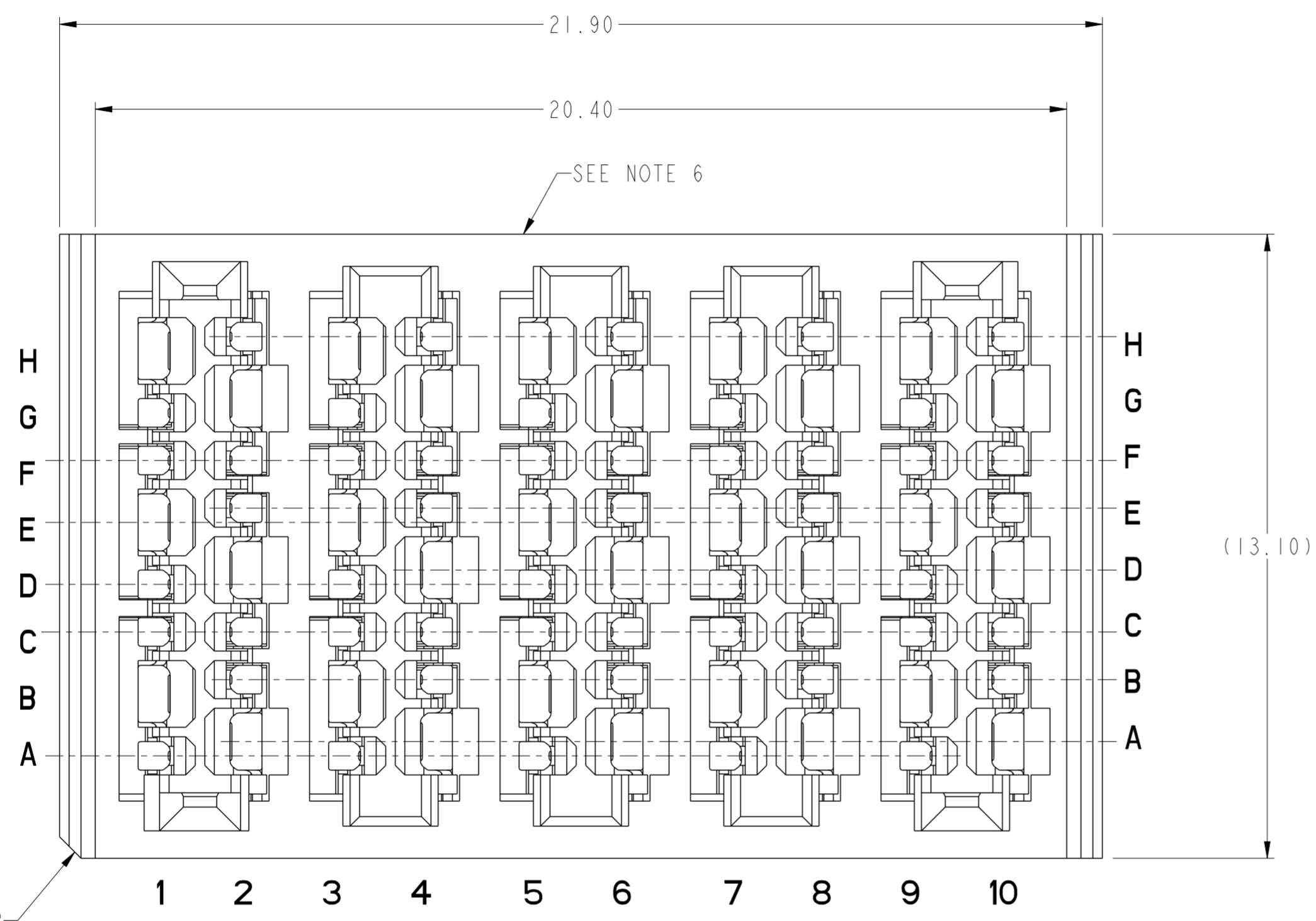


**10124414-401LF**  
**ADVANCED MATE/SHORT DETECT CONNECTOR**  
**ADVANCED MATE POSITIONS ARE POSITIONS A1 AND A9 ONLY**  
**SHORT DETECT POSITION IS H2 ONLY**  
**FOR ALL OTHER DIMENSIONS SEE SHEETS 1 & 2**

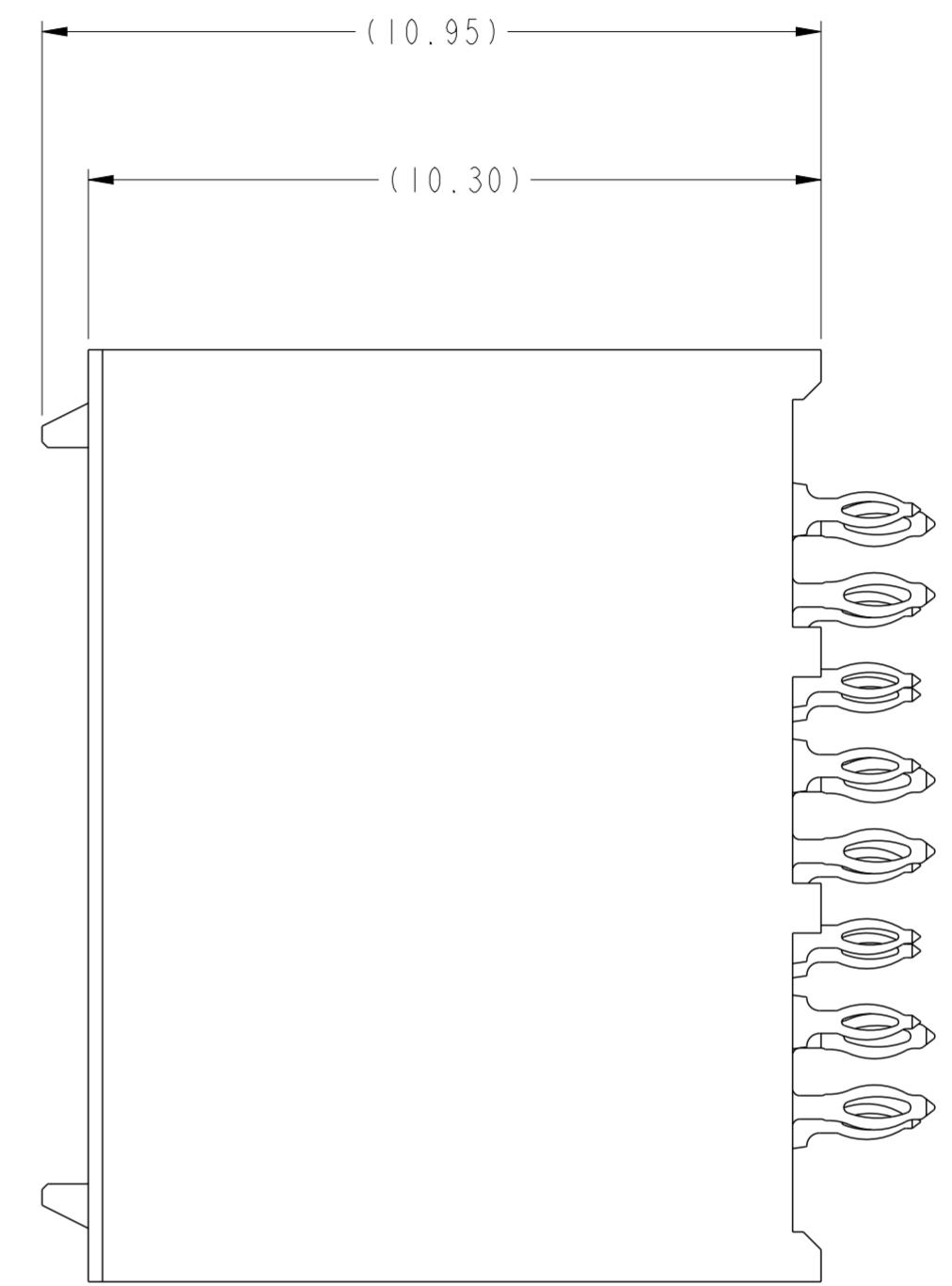
**Amphenol  
FCi**

© 2016 AFci

spec ref	---	dr	Daniel Xiao	2014/01/21	projection	MM	size	A2	scale	10:1			
tolerance std	ASME Y14.5M	eng	Peng-Bing Fu	2017/11/07			ecn no	ELX-DG-28204-1					
TOLERANCES UNLESS OTHERWISE SPECIFIED		chr	Justin Chen	2017/11/29			rel level	Released					
		appr	Heaven Cen	2017/11/30			product family	ExaMAX					
surface	-	linear	0.X	±.3		<b>ExaMAX VERTICAL HEADER</b> ASS'Y, 2 PAIR, 80 POS, 10 IMLA	dwg no 10124414	rev B	cat. no.		SEE TABLE	Product - Customer Drw	sheet 5 of 17
			0.XX	±.10									
		angular	0°	±2°									

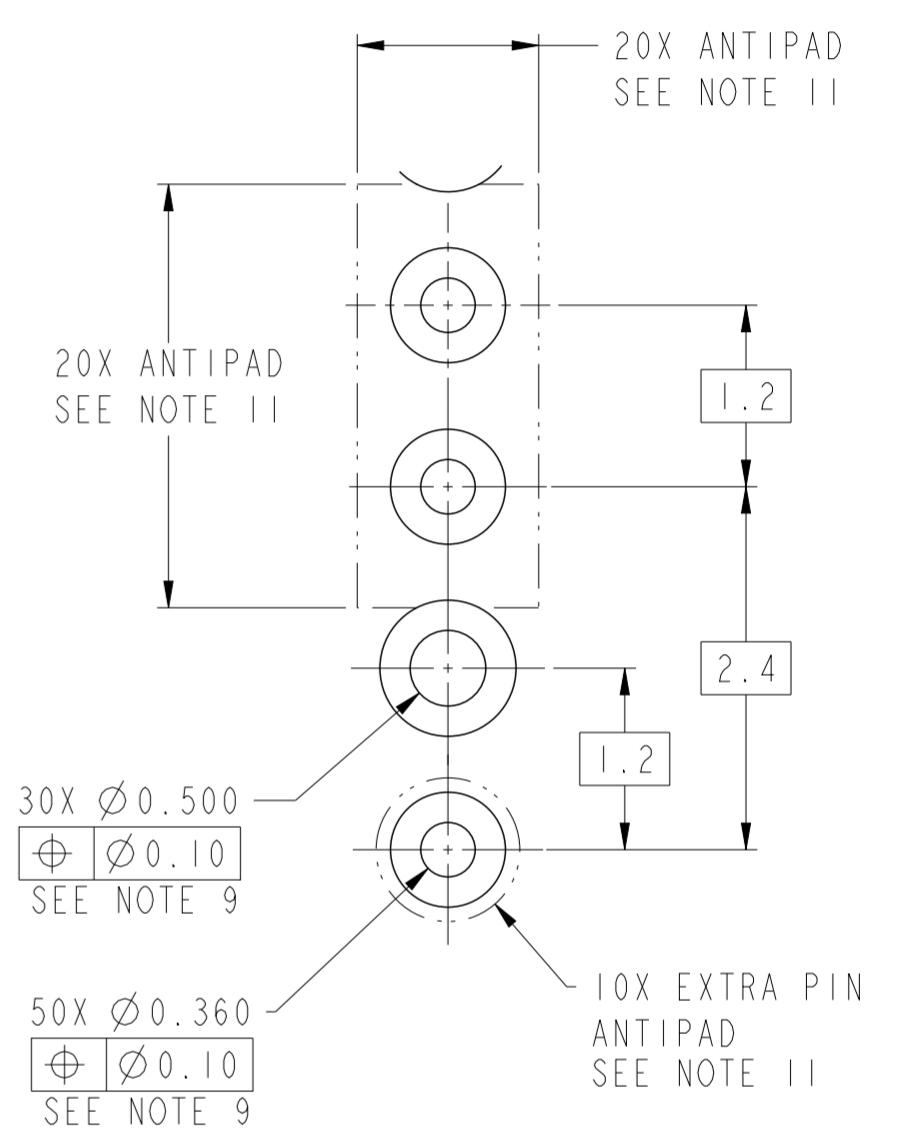
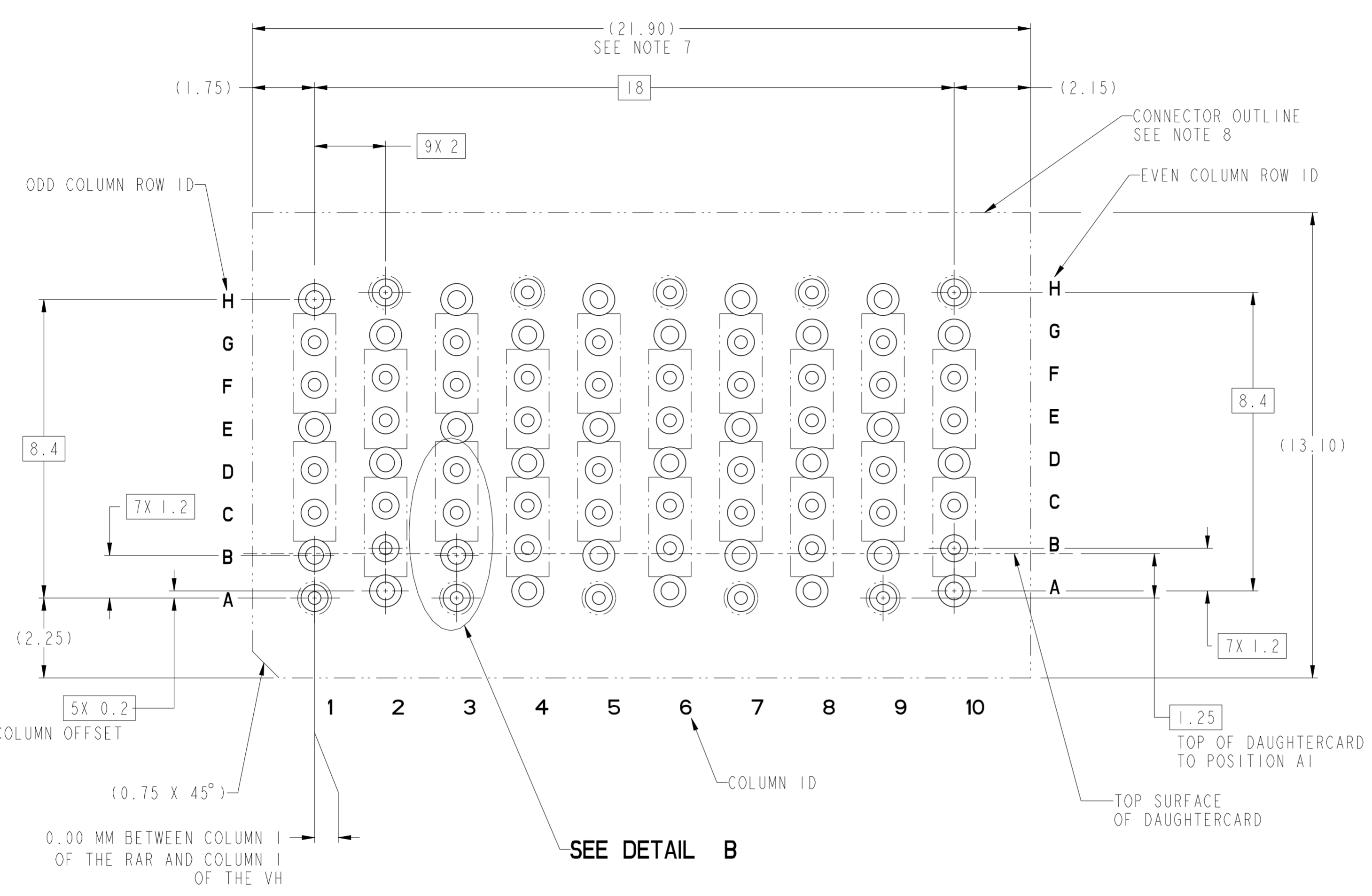


AI CORNER CHAMFER



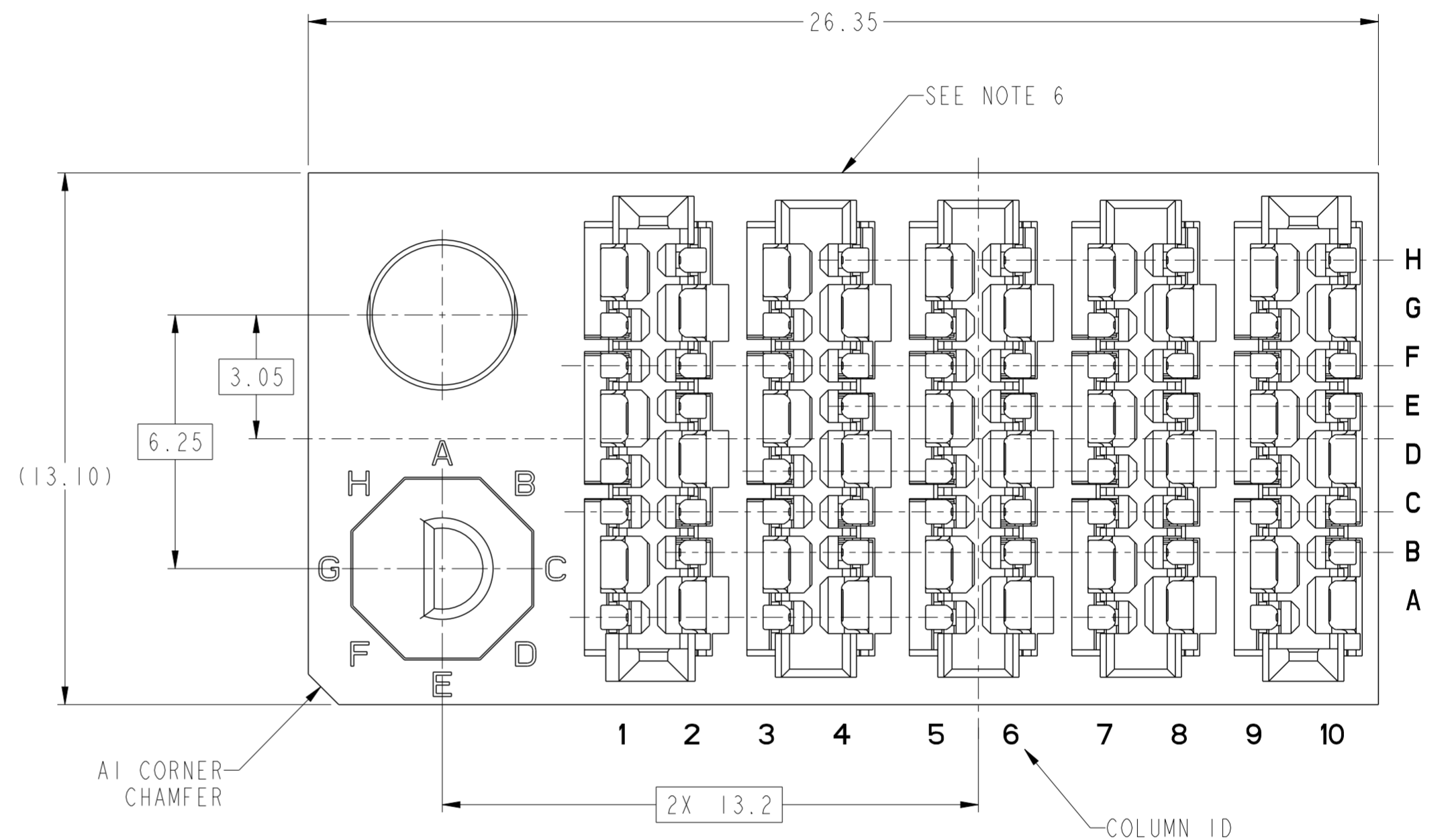
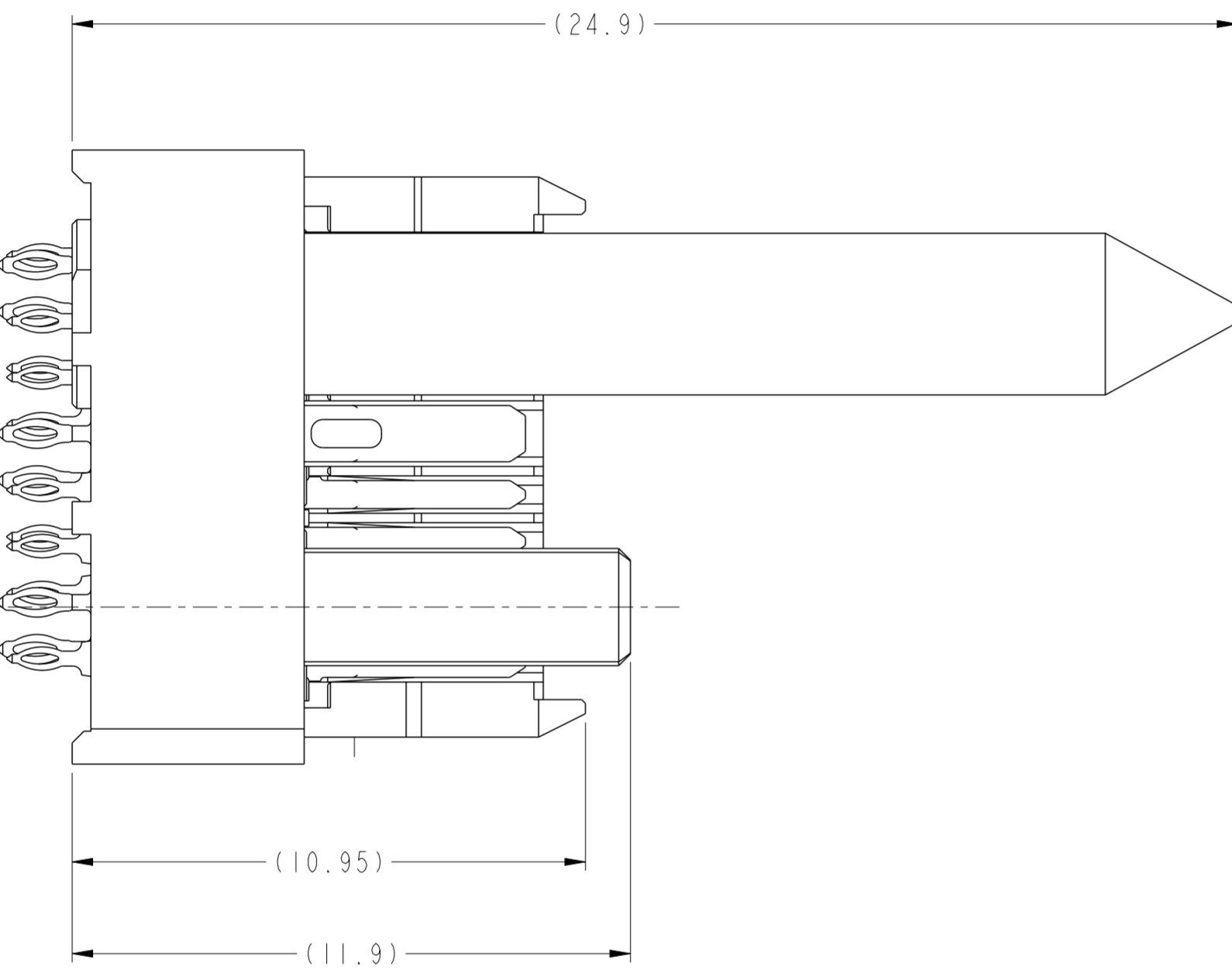
10124414-Y02LF (10124414-102LF SHOWN)  
END WALLED CONNECTOR  
FOR ALL DIMENSIONS SEE SHEET 1

spec ref	---	dr	Daniel Xiao	2014/01/21	projection	MM	size	A2	scale	10:1	
tolerance std	ASME Y14.5M	eng	Peng-Bing Fu	2017/11/07			ecn no	ELX-DG-28204-1			
TOLERANCES UNLESS OTHERWISE SPECIFIED		chr	Justin Chen	2017/11/29			rel level	Released			
surface	-	appr	Heaven Cen	2017/11/30			product family	ExaMAX			
	linear	0.X	±.3		title		ExaMAX VERTICAL HEADER		dwg no 10124414	rev B	
		0.XX	±.10		ASS'Y, 2 PAIR, 80 POS, 10 IMLA						
		0.XXX	±.050		cat. no.	SEE TABLE	Product - Customer Drw	sheet 6 of 17			
	angular	0°	±2°								



RECOMMENDED PCB LAYOUT FOR  
10124414-Y02LF (END WALLED CONNECTOR) COMPONENT SIDE  
SEE NOTES 7, 8, 9, & 11

spec ref	---	dr	Daniel Xiao	2014/01/21	projection	MM	size	A2	scale	10:1				
tolerance std	ASME Y14.5M	eng	Peng-Bing Fu	2017/11/07			ecn no	ELX-DG-28204-1						
TOLERANCES UNLESS OTHERWISE SPECIFIED		chr	Justin Chen	2017/11/29				product family	ExaMAX	rel level	Released			
surface	linear	0.X	±.3	0.XX							±.10	0.XXX	±.050	Amphenol FCi
	angular	0°	±2°	cat. no.		SEE TABLE	Product - Customer Drw	sheet 7 of 17						



10124414-Y1ALF THRU -Y1JLF  
 RIGHT GUIDANCE CONNECTOR (SEE NOTE 17)  
 FOR ALL OTHER DIMENSIONS SEE SHEET 1

Amphenol  
 FCI

© 2016 AFCI

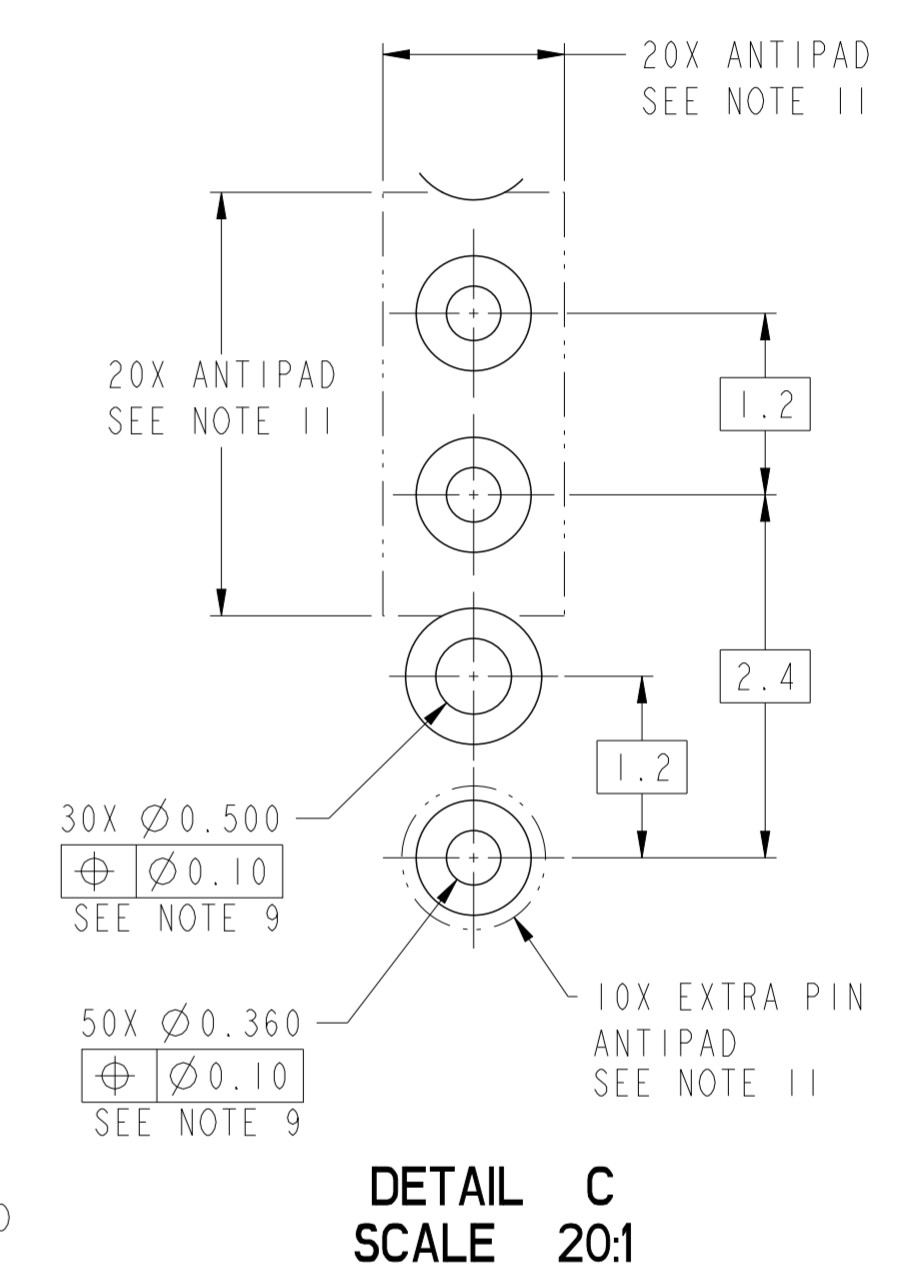
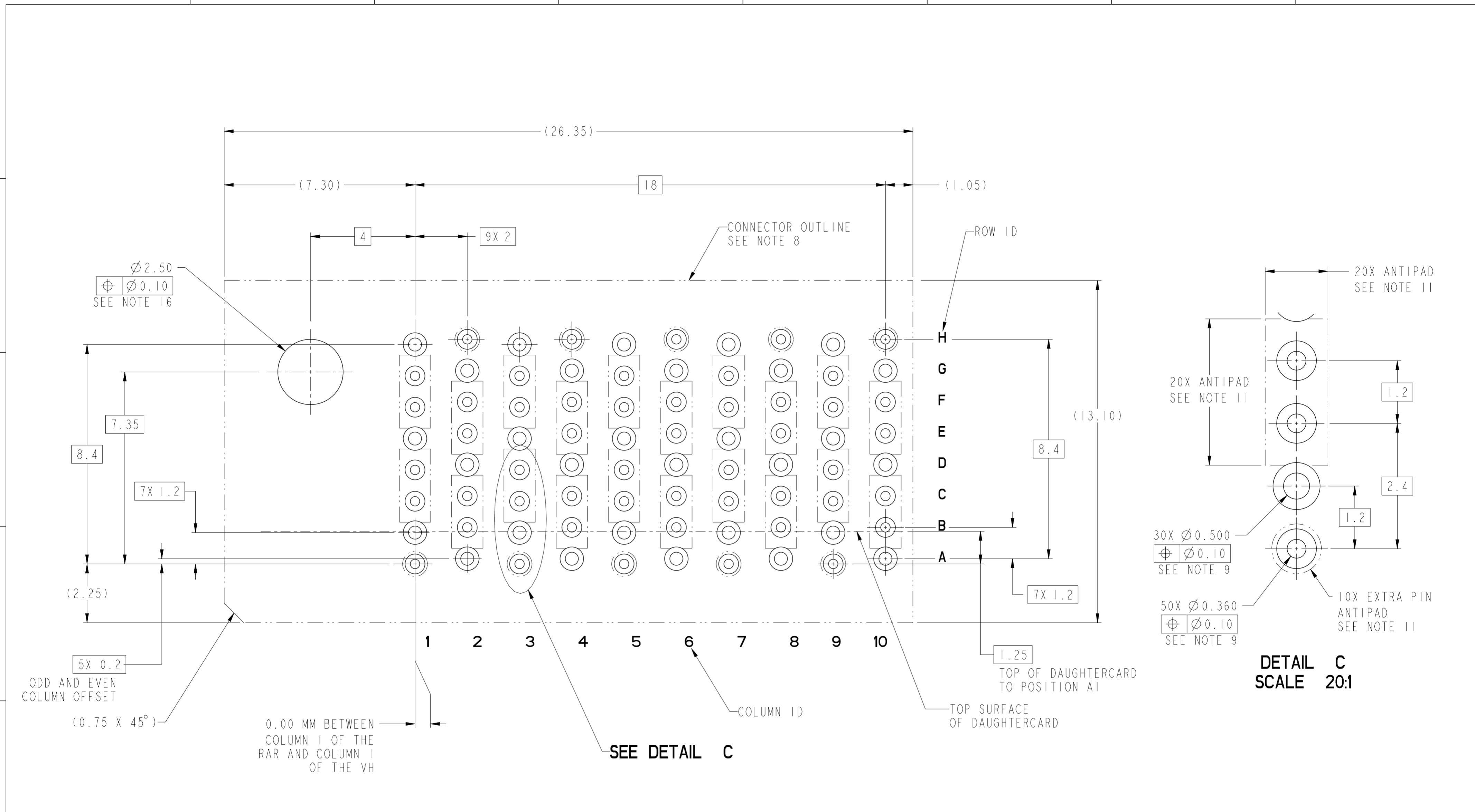
spec ref	---	dr	Daniel Xiao	2014/01/21	projection	MM	size	A2	scale	10:1												
tolerance std	ASME Y14.5M	eng	Peng-Bing Fu	2017/11/07			ecn no	ELX-DG-28204-1	rel level	Released												
TOLERANCES UNLESS OTHERWISE SPECIFIED		chr	Justin Chen	2017/11/29			product family	ExaMAX		rel level	Released											
surface	<table border="1"> <tr> <td>linear</td> <td>0.X</td> <td>±.3</td> </tr> <tr> <td></td> <td>0.XX</td> <td>±.10</td> </tr> <tr> <td></td> <td>0.XXX</td> <td>±.050</td> </tr> <tr> <td>angular</td> <td>0°</td> <td>±2°</td> </tr> </table>	linear	0.X	±.3				0.XX		±.10		0.XXX	±.050	angular	0°	±2°	appr	Heaven Cen	2017/11/30	title	ExaMAX VERTICAL HEADER ASS'Y, 2 PAIR, 80 POS, 10 IMLA	dwg no
linear	0.X	±.3																				
	0.XX	±.10																				
	0.XXX	±.050																				
angular	0°	±2°																				
		Amphenol FCI		cat. no.	SEE TABLE	Product - Customer Drw	sheet 8 of 17															

PDS: Rev :B

STATUS:Released

Printed: Dec 01, 2017

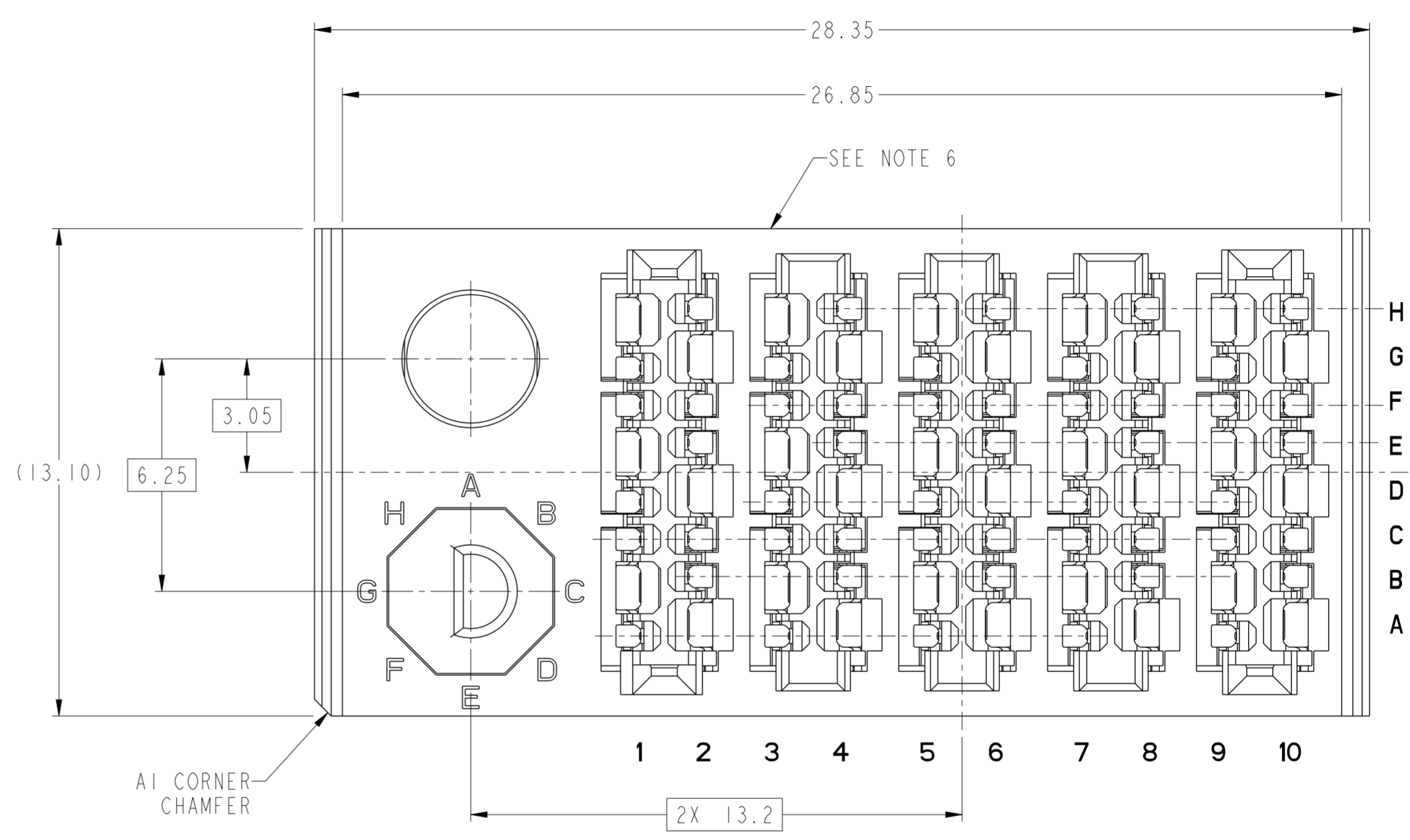
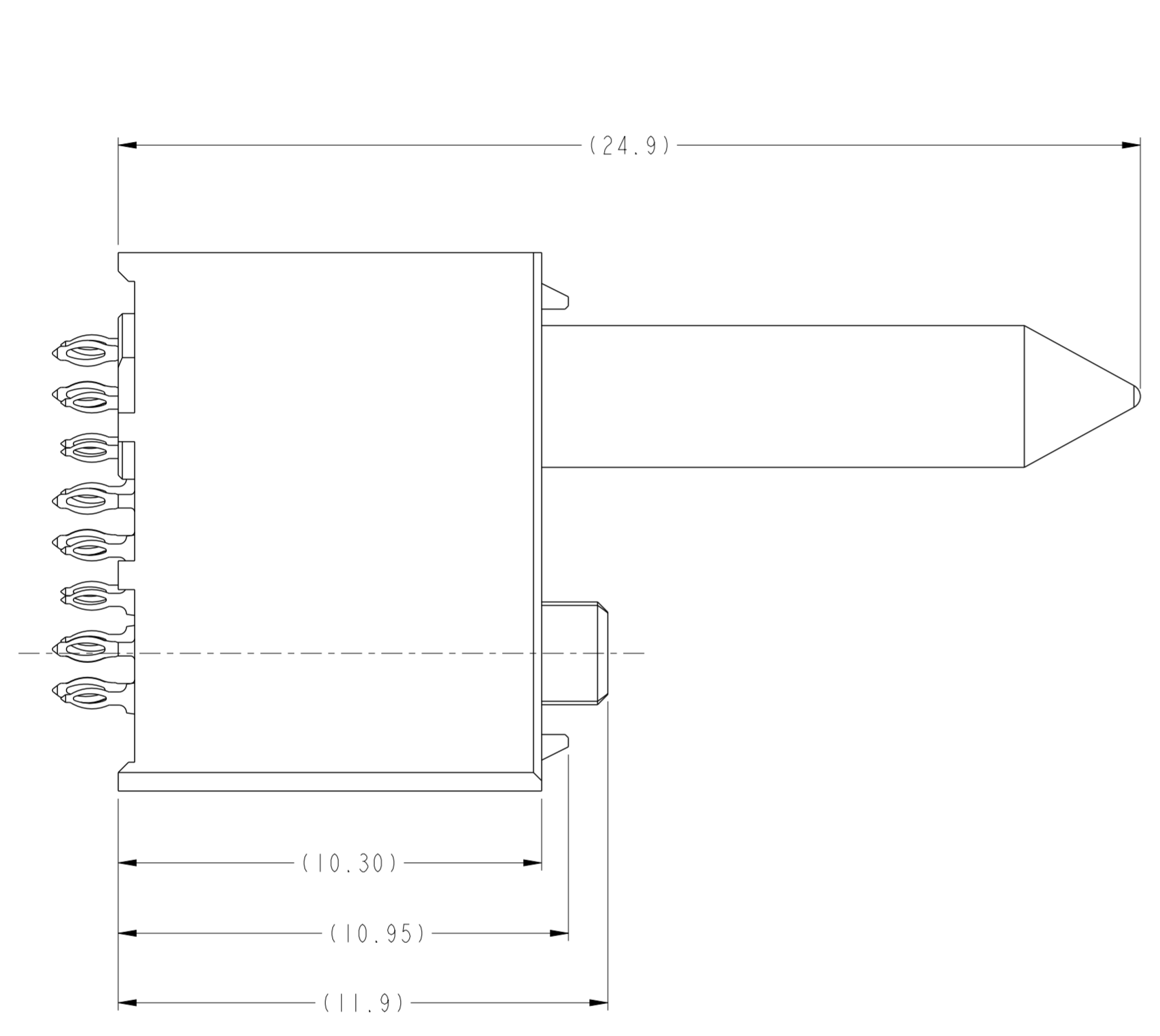




DETAIL C  
SCALE 20:1

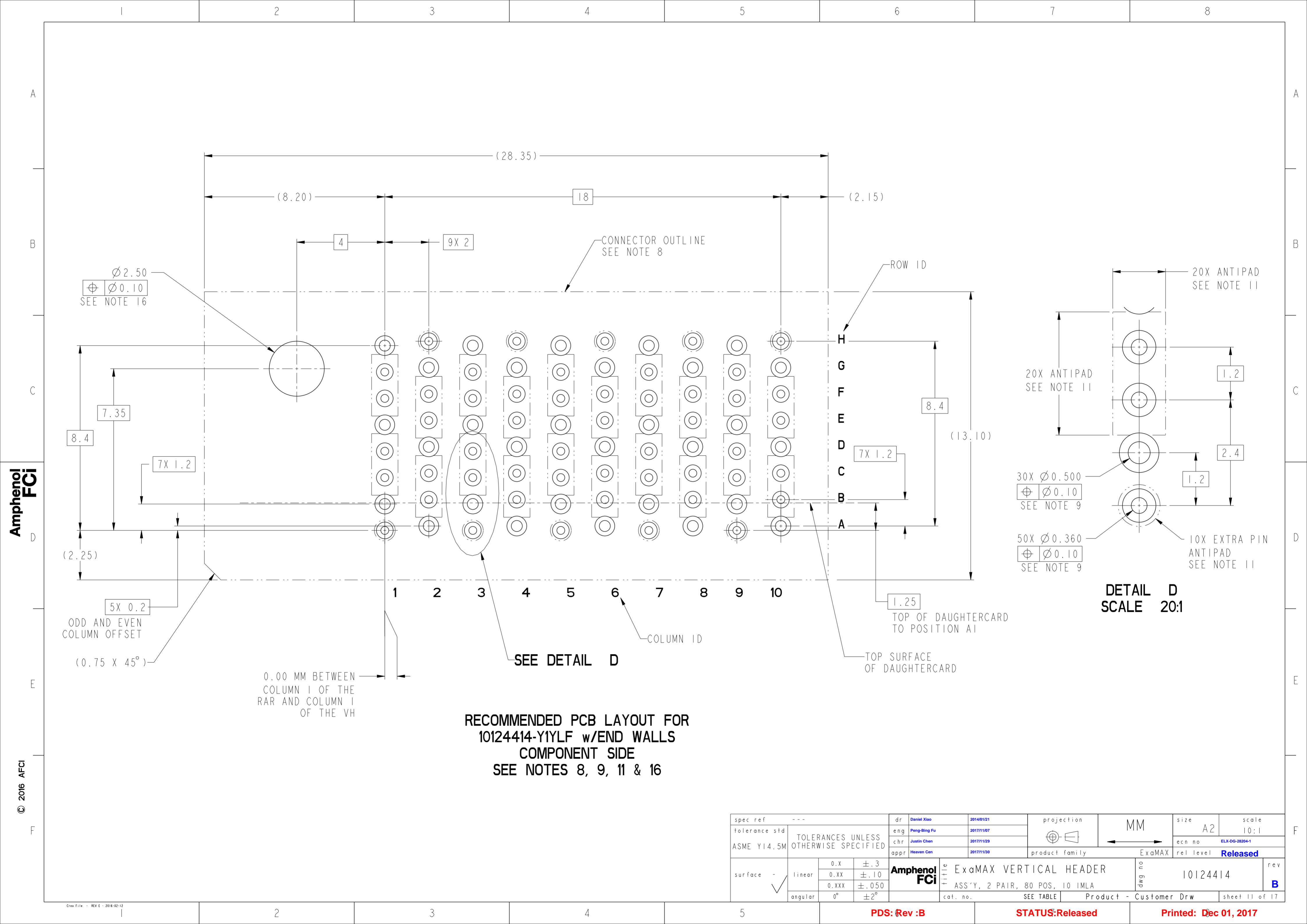
RECOMMENDED PCB LAYOUT FOR  
10124414-Y1YLF w/o END WALLS  
COMPONENT SIDE  
SEE NOTES 8, 9, 11 & 16

spec ref	---	dr	Daniel Xiao	2014/01/21	projection	MM	size	A2	scale	10:1				
tolerance std	ASME Y14.5M	eng	Peng-Bing Fu	2017/11/07			ecn no	ELX-DG-28204-1						
TOLERANCES UNLESS OTHERWISE SPECIFIED		chr	Justin Chen	2017/11/29				product family	ExaMAX	rel level	Released			
surface	linear	0.X	±.3	0.XX							±.10	0.XXX	±.050	Amphenol FCi
	angular	0°	±2°	cat. no.		SEE TABLE	Product - Customer Drw		sheet 9 of 17					



10124414-Y1LLF THRU -Y1WLF  
RIGHT GUIDANCE CONNECTOR w/END WALLS (SEE NOTE 17)  
FOR ALL OTHER DIMENSIONS SEE SHEET 1

spec ref	---	dr	Daniel Xiao	2014/01/21	projection	MM	size	A2	scale	101:1										
tolerance std	ASME Y14.5M	eng	Peng-Bing Fu	2017/11/07			ecn no	ELX-DG-28204-1												
TOLERANCES UNLESS OTHERWISE SPECIFIED		chr	Justin Chen	2017/11/29			rel level	Released												
surface	<table border="1"> <tr> <td>linear</td> <td>0.X</td> <td>±.3</td> </tr> <tr> <td></td> <td>0.XX</td> <td>±.10</td> </tr> <tr> <td></td> <td>0.XXX</td> <td>±.050</td> </tr> <tr> <td>angular</td> <td>0°</td> <td>±2°</td> </tr> </table>	linear	0.X	±.3				0.XX	±.10		0.XXX	±.050	angular	0°	±2°	appr	Heaven Cen	2017/11/30	product family	ExaMAX
linear	0.X	±.3																		
	0.XX	±.10																		
	0.XXX	±.050																		
angular	0°	±2°																		
					title ExaMAX VERTICAL HEADER ASS'Y, 2 PAIR, 80 POS, 10 IMLA		dwg no 10124414	rev B												
		cat. no. SEE TABLE			Product - Customer Drw		sheet 10 of 17													



Amphenol  
FCi

© 2016 AFci

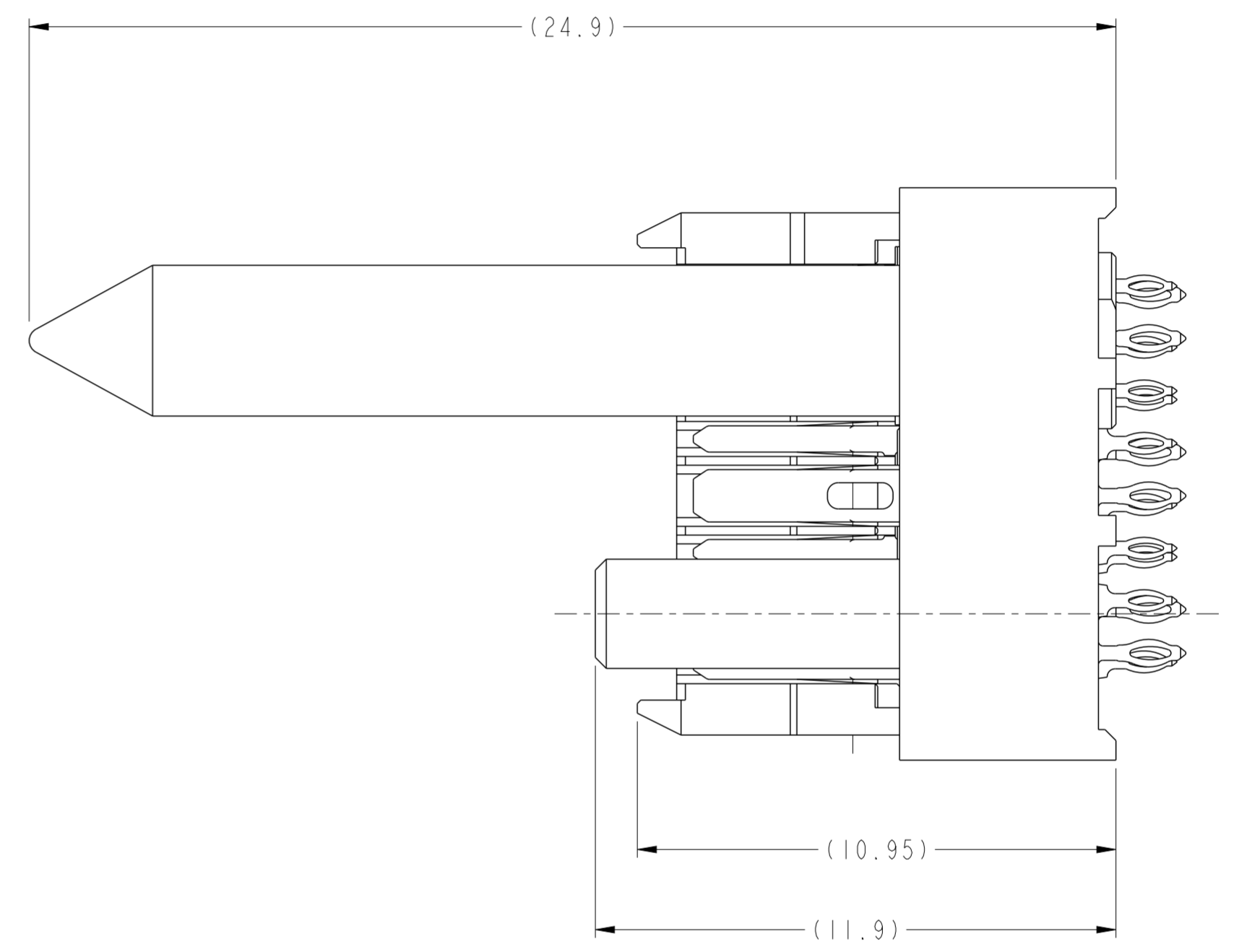
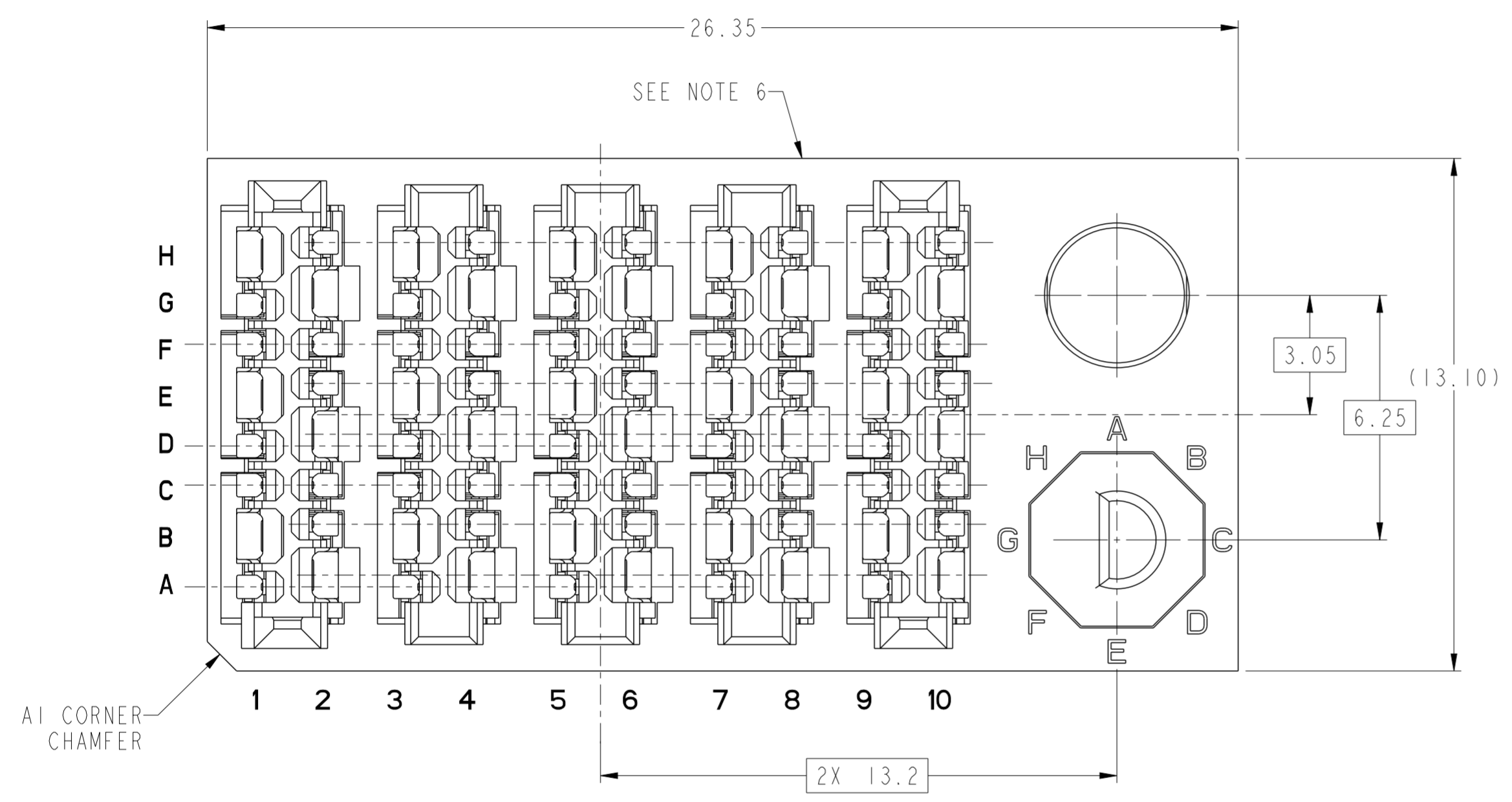
**RECOMMENDED PCB LAYOUT FOR  
10124414-Y1YLF w/END WALLS  
COMPONENT SIDE  
SEE NOTES 8, 9, 11 & 16**

spec ref	---	dr	Daniel Xiao	2014/01/21	projection	MM	size	A2	scale	10:1
tolerance std	ASME Y14.5M	eng	Peng-Bing Fu	2017/11/07			ecn no	ELX-DG-28204-1	rel level	Released
TOLERANCES UNLESS OTHERWISE SPECIFIED		chr	Justin Chen	2017/11/29						
		appr	Heaven Cen	2017/11/30						
surface	-	product family	ExaMAX		product family	ExaMAX	rel level	Released		
linear  angular	0.X	±.3	<b>Amphenol FCi</b>	title ExaMAX VERTICAL HEADER ASS'Y, 2 PAIR, 80 POS, 10 IMLA	cat. no. SEE TABLE	Product - Customer Drw	sheet 11 of 17	rev <b>B</b>	dng no 10124414	spec ref ---
	0.XX	±.10								
	0.XXX	±.050								
	0°	±2°								

PDS: Rev :B

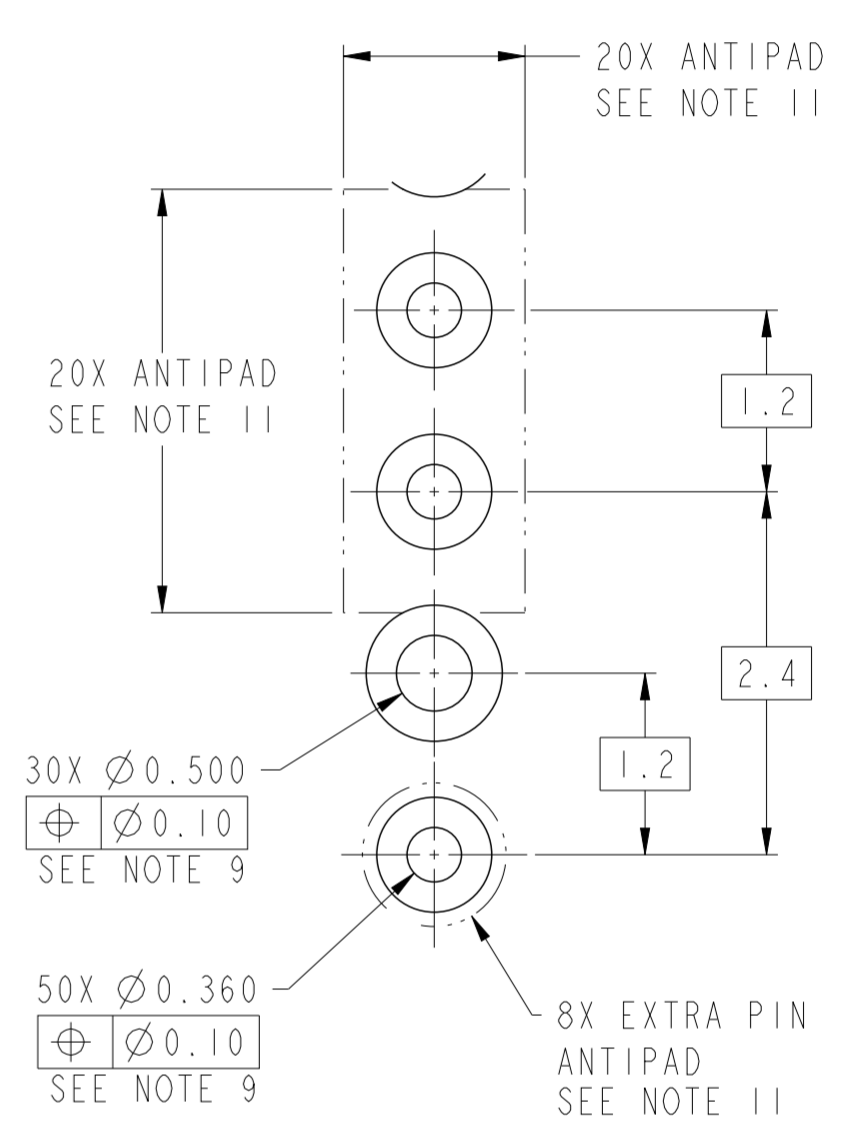
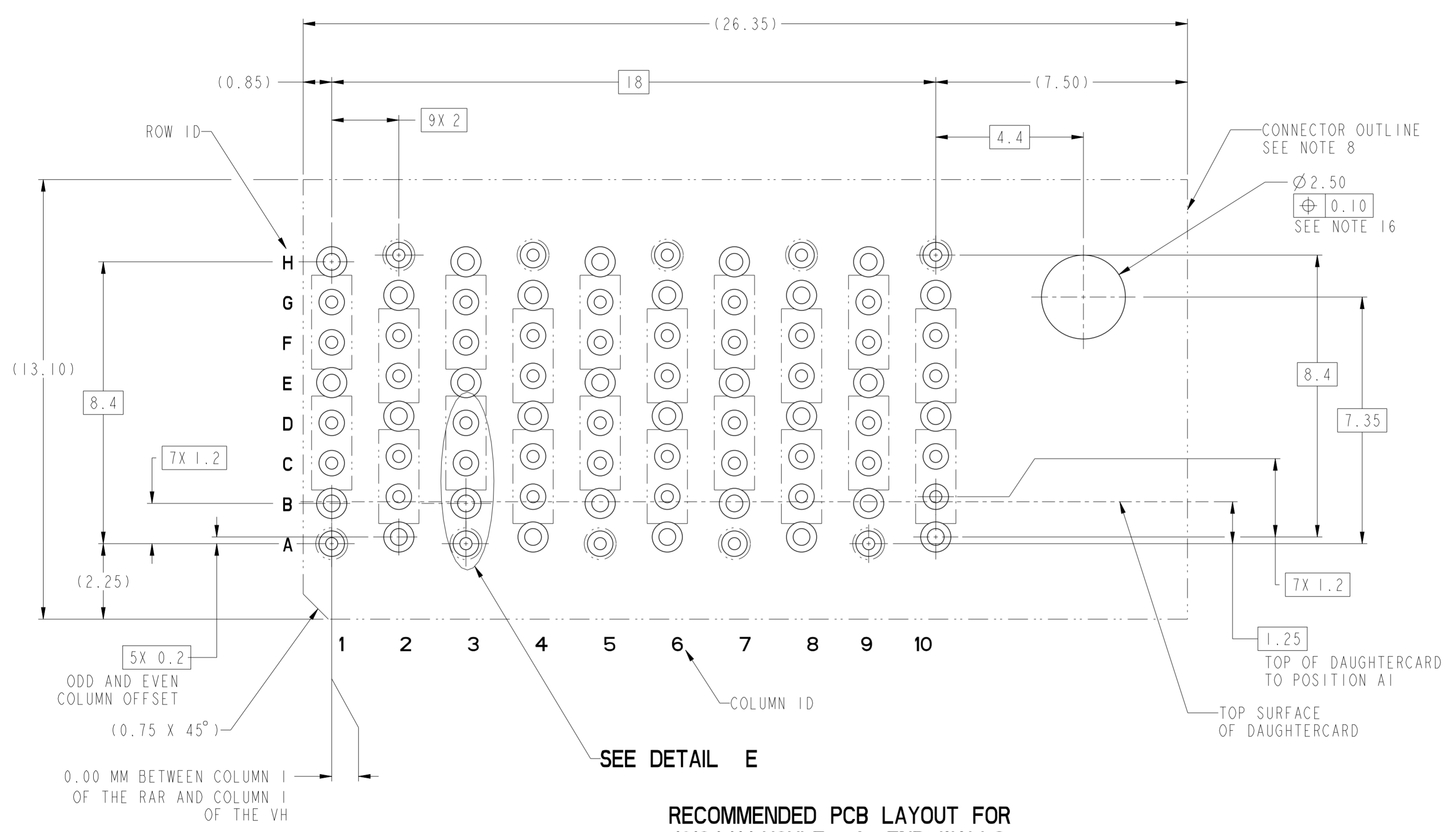
STATUS:Released

Printed: Dec 01, 2017



10124414-Y2ALF THRU -Y2JLF  
LEFT GUIDANCE CONNECTOR (SEE NOTE 17)  
FOR ALL DIMENSIONS SEE SHEET 1

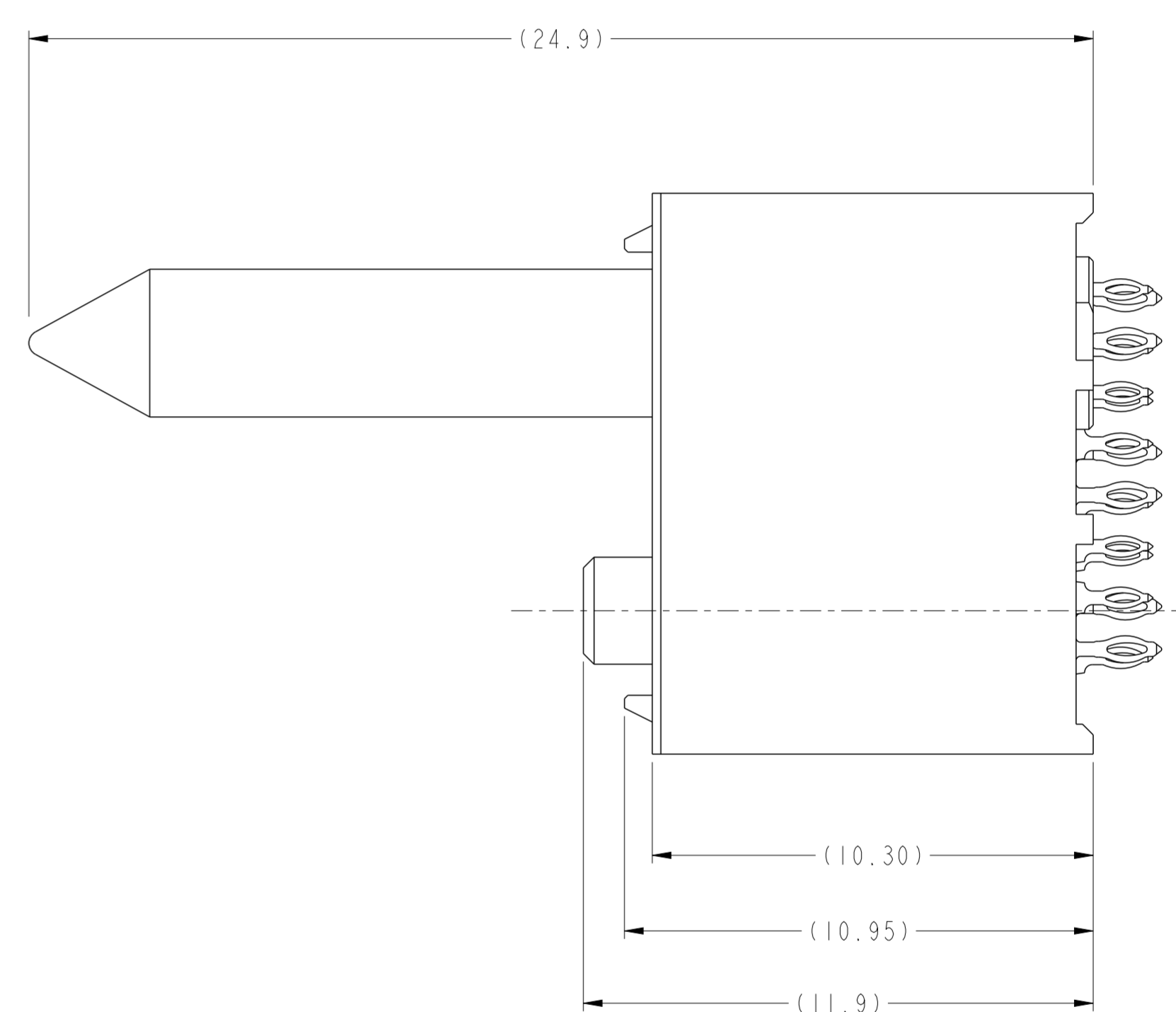
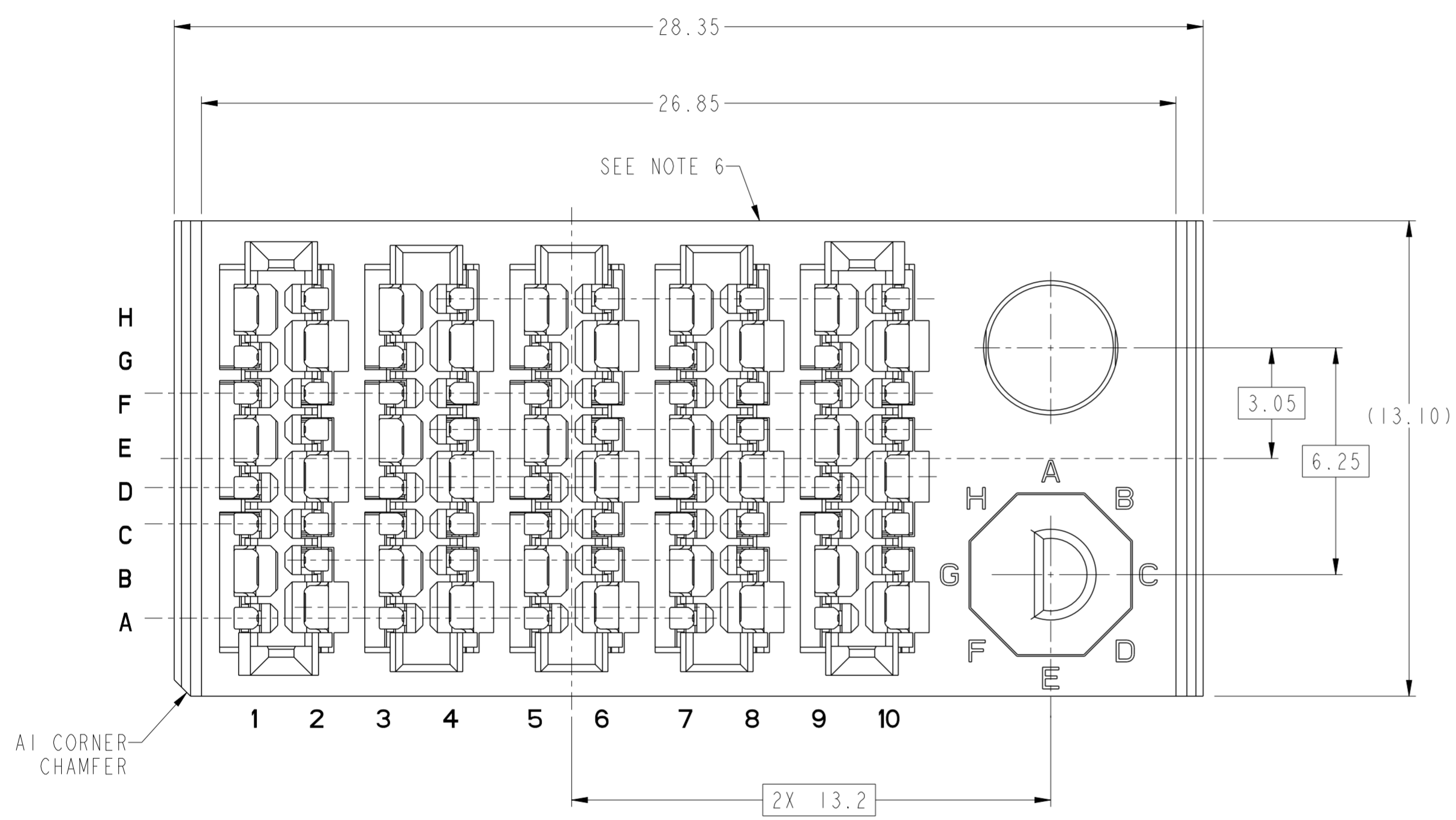
spec ref	---	dr	Daniel Xiao	2014/01/21	projection	MM	size	A2	scale	10:1											
tolerance std	ASME Y14.5M	eng	Peng-Bing Fu	2017/11/07			ecn no	ELX-DG-28204-1													
TOLERANCES UNLESS OTHERWISE SPECIFIED		chr	Justin Chen	2017/11/29			rel level	Released													
surface	<table border="1"> <tr> <td>linear</td> <td>0.X</td> <td>±.3</td> </tr> <tr> <td></td> <td>0.XX</td> <td>±.10</td> </tr> <tr> <td></td> <td>0.XXX</td> <td>±.050</td> </tr> <tr> <td>angular</td> <td>0°</td> <td>±2°</td> </tr> </table>	linear	0.X	±.3				0.XX	±.10		0.XXX	±.050	angular	0°	±2°	appr	Heaven Cen	2017/11/30	product family	ExaMAX	
linear	0.X	±.3																			
	0.XX	±.10																			
	0.XXX	±.050																			
angular	0°	±2°																			
					title ExaMAX VERTICAL HEADER ASS'Y, 2 PAIR, 80 POS, 10 IMLA		dwg no 10124414	rev B													
		cat. no.			SEE TABLE	Product - Customer Drw		sheet 12 of 17													



DETAIL E  
SCALE 20:1

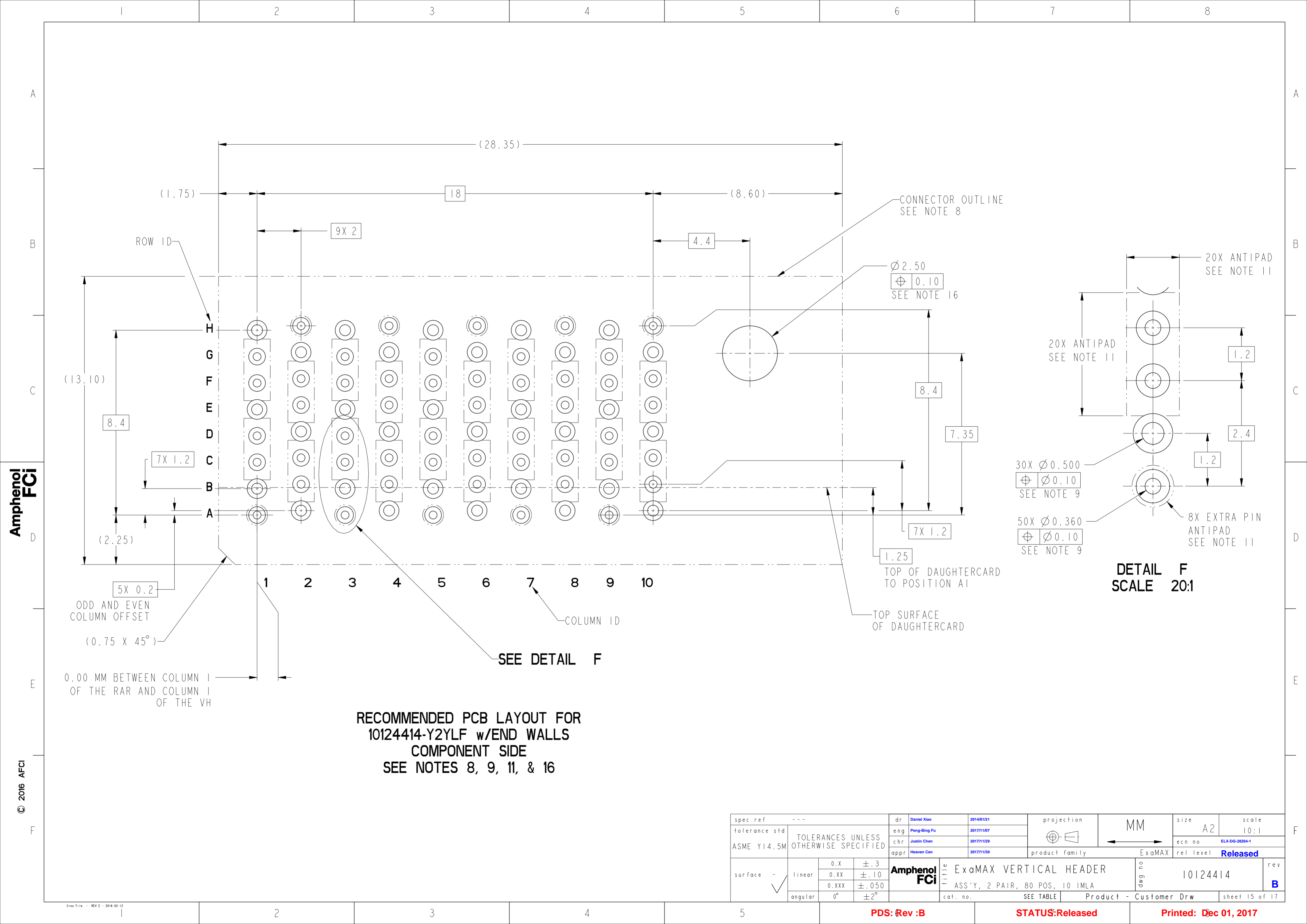
RECOMMENDED PCB LAYOUT FOR  
10124414-Y2YLF w/o END WALLS  
COMPONENT SIDE  
SEE NOTES 8, 9, 11, & 16

spec ref	---	dr	Daniel Xiao	2014/01/21	projection	MM	size	A2	scale	10:1
tolerance std	ASME Y14.5M	eng	Peng-Bing Fu	2017/11/07			ecn no	ELX-DG-28204-1	rel level	Released
TOLERANCES UNLESS OTHERWISE SPECIFIED		chr	Justin Chen	2017/11/29						
		appr	Heaven Cen	2017/11/30						
surface	-	product family	ExaMAX		product family	ExaMAX	rel level	Released		
	linear	0.X	±.3		title		ExaMAX VERTICAL HEADER		cat. no. SEE TABLE Product - Customer Drw sheet 13 of 17	rev B
		0.XX	±.10		part no		10124414			
		0.XXX	±.050		ass'y, 2 PAIR, 80 POS, 10 IMLA					
	angular	0°	±2°	ass'y, 2 PAIR, 80 POS, 10 IMLA						



10124414-Y2LLF THRU -Y2WLF  
LEFT GUIDANCE CONNECTOR w/END WALLS (SEE NOTE 17)  
FOR ALL OTHER DIMENSIONS SEE SHEET 1

spec ref	---	dr	Daniel Xiao	2014/01/21	projection	MM	size	A2	scale	10:1								
tolerance std	ASME Y14.5M	eng	Peng-Bing Fu	2017/11/07			ecn no	ELX-DG-28204-1										
TOLERANCES UNLESS OTHERWISE SPECIFIED		chr	Justin Chen	2017/11/29			rel level	Released										
		appr	Heaven Cen	2017/11/30			product family	ExaMAX										
surface	<table border="1"> <tr> <td rowspan="3">-</td> <td rowspan="3">linear</td> <td>0.X</td> <td>±.3</td> </tr> <tr> <td>0.XX</td> <td>±.10</td> </tr> <tr> <td>0.XXX</td> <td>±.050</td> </tr> <tr> <td></td> <td>angular</td> <td>0°</td> <td>±2°</td> </tr> </table>	-	linear	0.X	±.3	0.XX	±.10	0.XXX	±.050		angular	0°	±2°		<b>title</b> ExaMAX VERTICAL HEADER ASS'Y, 2 PAIR, 80 POS, 10 IMLA		dwg no 10124414	rev B
-	linear			0.X	±.3													
				0.XX	±.10													
		0.XXX	±.050															
	angular	0°	±2°															
		cat. no.	SEE TABLE	Product - Customer Drw	sheet 14 of 17													



RECOMMENDED PCB LAYOUT FOR  
10124414-Y2YLF w/END WALLS  
COMPONENT SIDE  
SEE NOTES 8, 9, 11, & 16

spec ref	---	dr	Daniel Xiao	2014/01/21	projection	MM	size	A2	scale	10:1	
tolerance std	ASME Y14.5M	eng	Peng-Bing Fu	2017/11/07			ecn no	ELX-DG-28204-1			
TOLERANCES UNLESS OTHERWISE SPECIFIED		chr	Justin Chen	2017/11/29				rel level	Released		
		appr	Heaven Cen	2017/11/30					Product - Customer Drw		
surface	-			<b>ExaMAX VERTICAL HEADER</b> ASS'Y, 2 PAIR, 80 POS, 10 IMLA		cat. no. SEE TABLE	product family ExaMAX	rel level	sheet 15 of 17		
	linear	0.X	±.3								
		0.XX	±.10								
		0.XXX	±.050								
	angular	0°	±2°								

PDS: Rev :B

STATUS:Released

Printed: Dec 01, 2017

© 2016 APCI

# 10124414 - Y Y Y L F

ASSEMBLY PART NUMBER	DESCRIPTION
10124414-1YYLF	STANDARD MATE
10124414-2YYLF	ADVANCED MATE
10124414-3YYLF	SHORT DETECT
10124414-4YYLF	ADVANCED MATE & SHORT DETECT

MODULE DESCRIPTION	DESIGNATION REPRESENTED IN DASH NUMBER									BASE MODULE
WITHOUT END WALLS (SEE SHEET 1)	<b>01</b>									
WITH END WALLS (SEE SHEET 6)	<b>02</b>									
RIGHT GUIDANCE MODULE, WITHOUT END WALLS (SEE SHEET 8)	<b>1A</b>	<b>1B</b>	<b>1C</b>	<b>1D</b>	<b>1E</b>	<b>1F</b>	<b>1G</b>	<b>1H</b>	<b>1J</b> (NO KEY)	
RIGHT GUIDANCE MODULE, WITH END WALLS (SEE SHEET 10)	<b>1L</b>	<b>1M</b>	<b>1N</b>	<b>1P</b>	<b>1R</b>	<b>1T</b>	<b>1U</b>	<b>1V</b>	<b>1W</b> (NO KEY)	
LEFT GUIDANCE MODULE, WITHOUT END WALLS (SEE SHEET 12)	<b>2A</b>	<b>2B</b>	<b>2C</b>	<b>2D</b>	<b>2E</b>	<b>2F</b>	<b>2G</b>	<b>2H</b>	<b>2J</b> (NO KEY)	
LEFT GUIDANCE MODULE, WITH END WALLS (SEE SHEET 14)	<b>2L</b>	<b>2M</b>	<b>2N</b>	<b>2P</b>	<b>2R</b>	<b>2T</b>	<b>2U</b>	<b>2V</b>	<b>2W</b> (NO KEY)	

Amphenol FCI

© 2016 AFCI

spec ref	---	dr	Daniel Xiao	2014/01/21	projection	MM	size	A2	scale	5:1
tolerance std	ASME Y14.5M	eng	Peng-Bing Fu	2017/11/07		←	ecn no	ELX-DG-28204-1		
TOLERANCES UNLESS OTHERWISE SPECIFIED		chr	Justin Chen	2017/11/29			rel level	Released		
		appr	Heaven Cen	2017/11/30			product family	ExaMAX		
surface	✓	Amphenol FCI		title		ExaMAX VERTICAL HEADER		dwg no	10124414	
	linear	0.X	±.3	ASS'Y, 2 PAIR, 80 POS, 10 IMLA				rev	B	
		0.XX	±.10	cat. no.		SEE TABLE		Product - Customer Drw		sheet 16 of 17
		0.XXX	±.050							
	angular	0°	±2°							

PDS: Rev :B

STATUS:Released

Printed: Dec 01, 2017



NOTES:

- ① - CONNECTOR MATERIALS:  
HOUSING: HIGH TEMP THERMOPLASTIC, BLACK, UL94-V0  
IMLA PLASTIC: HIGH TEMP THERMOPLASTIC, BLACK, UL94-V0  
CONTACT: COPPER ALLOY  
GUIDE PIN: ZINC ALLOY  
POLARIZING PIN: ZINC ALLOY
- 2 - CONTACT PLATING:  
SEPARABLE INTERFACE:  
PERFORMANCE-BASED PLATING, QUALIFIED TO MEET THE REQUIREMENTS OF FCI PRODUCT SPECIFICATION GS-12-1096 INCLUDING TELCORDIA GR-1217-CORE (NOVEMBER 1995) CENTRAL OFFICE TEST SEQUENCE  
  
PRESS-FIT TAILS: TIN OVER NICKEL (LEAD FREE)
- 3 - PRODUCT SPECIFICATION: GS-12-1096
- 4 - APPLICATION SPECIFICATION GS-20-0361.
- 5 - PACKAGING MEETS GS-14-920 LEAD FREE LABELING SPECIFICATION.
- ⑥ - PRODUCT MARKING, (PROTOTYPE, PART NUMBER & LOT CODE), ON THIS SURFACE.
- ⑦ - THE MINIMUM CENTERLINE SPACING BETWEEN ADJACENT MODULES IS 20.0 mm FOR 10124414-101LF AND 22.0 mm FOR 10124414-102LF.
- ⑧ - CONNECTOR OUTLINE MAY BE SCREEN PRINTED ONTO CUSTOMER PCB TO BE USED AS A GUIDE FOR MANUAL CONNECTOR PLACEMENT.
- ⑨ - REFER TO CUSTOMER DRAWING 10119933 FOR INFORMATION ON PCB HOLE DIAMETERS AND PLATING OPTIONS
- ⑩ - THIS PRODUCT MEETS THE EUROPEAN UNION DIRECTIVES & OTHER COUNTRY REGULATIONS AS DESCRIBED IN GS-47-0004.
- ⑪ - REFER TO ROUTING GUIDE GS-20-0511 FOR RECOMMENDATIONS ON OPTIMIZATION OF FOOTPRINT AND TRACE ROUTING LAYOUT.
- 12 - THE HOUSING WILL WITHSTAND EXPOSURE TO 260° C PEAK TEMPERATURE FOR 10-30 SECONDS IN A CONVECTION, INFRA-RED OR VAPOR PHASE REFLOW OVEN.
- ⑬ - THE ADVANCED MATE HEADER, 10124414-2XXLF, WHEN MATED WITH AN ADVANCED MATE RIGHT ANGLE RECEPTACLE, 10124413-2XXLF, WILL PROVIDE 2 PAIRS OF MATING CONTACTS THAT MATE 0.75MM BEFORE THE REMAINDER OF THE SIGNAL AND GROUND CONTACTS.
- ⑭ - THE SHORT DETECT HEADER, 10124414-3XXLF, WHEN MATED WITH A RIGHT ANGLE RECEPTACLE, 10124413-1XXLF, WILL PROVIDE 1 PAIR OF MATING CONTACTS THAT MATE 1.00 MM AFTER THE REMAINDER OF THE SIGNAL AND GROUND CONTACTS.
- ⑮ - THE ADVANCE MATE/SHORT DETECT HEADER, 10124414-4YYLF, WHEN MATED WITH AN ADVANCED MATE RECEPTACLE, 10124413-2YYLF, WILL PROVIDE 2 PAIRS OF MATING CONTACTS THAT MATE 0.75MM BEFORE THE REMAINDER OF THE SIGNAL AND GROUND CONTACTS AND 1 PAIR OF MATING CONTACTS THAT MATE 1.00MM AFTER THE REMAINDER OF THE SIGNAL AND GROUND CONTACTS.
- ⑯ - FOR CONNECTORS WITH EITHER A RIGHT OR LEFT GUIDE MODULE, A PHILLIPS PAN HEAD M2 X 0.4 HOLD-DOWN SCREW MUST BE USED TO SECURE THE CONNECTOR AND GUIDE PIN TO THE PCB. THE SCREW LENGTH SHALL BE 2.0-6.0 mm PLUS THE THICKNESS OF THE PCB. SCREW IS NOT PROVIDED WITH THE CONNECTOR.
- ⑰ - LEFT / RIGHT INTERGRATED GUIDE ORIENTATION IS DETERMINED BY THE LOCATION OF THE GUIDE FEATURES WHEN LOOKING AT THE MATING FACE OF THE RIGHT ANGLE RECEPTACLE. THE LEFT / RIGHT DESIGNATION OF THE MATING HEADER IS DEFINED BY THE RIGHT ANGLE RECEPTACLE THAT IT MATES WITH (i. e. A RIGHT GUIDE VERTICAL HEADER MATES WITH A RIGHT GUIDE RIGHT ANGLE RECEPTACLE).
- ⑱ - ALL GROUND CONTACTS ARE COMMONED WITHIN A COLUMN.

spec ref	---	dr	Daniel Xiao	2014/01/21	projection	MM	size	A2	scale	2:1	
tolerance std	ASME Y14.5M	eng	Peng-Bing Fu	2017/11/07		← →	ecn no	ELX-DG-28204-1			
TOLERANCES UNLESS OTHERWISE SPECIFIED		chr	Justin Chen	2017/11/29			rel level	Released			
surface	✓	appr	Heaven Cen	2017/11/30	product family	ExaMAX	dwg no	10124414		rev	B
linear	0.X ±.3	Amphenol FCI		title	ExaMAX VERTICAL HEADER ASS'Y, 2 PAIR, 80 POS, 10 IMLA			cat. no.	SEE TABLE	Product - Customer Drw	sheet 17 of 17
angular	0° ±2°										



## Стандарт Электрон Связь

Мы молодая и активно развивающаяся компания в области поставок электронных компонентов. Мы поставляем электронные компоненты отечественного и импортного производства напрямую от производителей и с крупнейших складов мира.

Благодаря сотрудничеству с мировыми поставщиками мы осуществляем комплексные и плановые поставки широчайшего спектра электронных компонентов.

Собственная эффективная логистика и склад в обеспечивает надежную поставку продукции в точно указанные сроки по всей России.

Мы осуществляем техническую поддержку нашим клиентам и предпродажную проверку качества продукции. На все поставляемые продукты мы предоставляем гарантию .

Осуществляем поставки продукции под контролем ВП МО РФ на предприятия военно-промышленного комплекса России , а также работаем в рамках 275 ФЗ с открытием отдельных счетов в уполномоченном банке. Система менеджмента качества компании соответствует требованиям ГОСТ ISO 9001.

Минимальные сроки поставки, гибкие цены, неограниченный ассортимент и индивидуальный подход к клиентам являются основой для выстраивания долгосрочного и эффективного сотрудничества с предприятиями радиоэлектронной промышленности, предприятиями ВПК и научно-исследовательскими институтами России.

С нами вы становитесь еще успешнее!

### Наши контакты:

**Телефон:** +7 812 627 14 35

**Электронная почта:** [sales@st-electron.ru](mailto:sales@st-electron.ru)

**Адрес:** 198099, Санкт-Петербург,  
Промышленная ул, дом № 19, литера Н,  
помещение 100-Н Офис 331