



MCP3905A/06A
Energy Meter
Reference Design

Note the following details of the code protection feature on Microchip devices:

- Microchip products meet the specification contained in their particular Microchip Data Sheet.
- Microchip believes that its family of products is one of the most secure families of its kind on the market today, when used in the intended manner and under normal conditions.
- There are dishonest and possibly illegal methods used to breach the code protection feature. All of these methods, to our knowledge, require using the Microchip products in a manner outside the operating specifications contained in Microchip's Data Sheets. Most likely, the person doing so is engaged in theft of intellectual property.
- Microchip is willing to work with the customer who is concerned about the integrity of their code.
- Neither Microchip nor any other semiconductor manufacturer can guarantee the security of their code. Code protection does not mean that we are guaranteeing the product as "unbreakable."

Code protection is constantly evolving. We at Microchip are committed to continuously improving the code protection features of our products. Attempts to break Microchip's code protection feature may be a violation of the Digital Millennium Copyright Act. If such acts allow unauthorized access to your software or other copyrighted work, you may have a right to sue for relief under that Act.

Information contained in this publication regarding device applications and the like is provided only for your convenience and may be superseded by updates. It is your responsibility to ensure that your application meets with your specifications. MICROCHIP MAKES NO REPRESENTATIONS OR WARRANTIES OF ANY KIND WHETHER EXPRESS OR IMPLIED, WRITTEN OR ORAL, STATUTORY OR OTHERWISE, RELATED TO THE INFORMATION, INCLUDING BUT NOT LIMITED TO ITS CONDITION, QUALITY, PERFORMANCE, MERCHANTABILITY OR FITNESS FOR PURPOSE. Microchip disclaims all liability arising from this information and its use. Use of Microchip devices in life support and/or safety applications is entirely at the buyer's risk, and the buyer agrees to defend, indemnify and hold harmless Microchip from any and all damages, claims, suits, or expenses resulting from such use. No licenses are conveyed, implicitly or otherwise, under any Microchip intellectual property rights.

Trademarks

The Microchip name and logo, the Microchip logo, dsPIC, KEELOQ, KEELOQ logo, MPLAB, PIC, PICmicro, PICSTART, rfPIC and UNI/O are registered trademarks of Microchip Technology Incorporated in the U.S.A. and other countries.


FilterLab, Hampshire, HI-TECH C, Linear Active Thermistor, MXDEV, MXLAB, SEEVAL and The Embedded Control Solutions Company are registered trademarks of Microchip Technology Incorporated in the U.S.A.

Analog-for-the-Digital Age, Application Maestro, CodeGuard, dsPICDEM, dsPICDEM.net, dsPICworks, dsSPEAK, ECAN, ECONOMONITOR, FanSense, HI-TIDE, In-Circuit Serial Programming, ICSP, Mindi, MiWi, MPASM, MPLAB Certified logo, MPLIB, MPLINK, mTouch, Octopus, Omniscient Code Generation, PICC, PICC-18, PICDEM, PICDEM.net, PICKit, PICtail, PIC³² logo, REAL ICE, rLAB, Select Mode, Total Endurance, TSHARC, UniWinDriver, WiperLock and ZENA are trademarks of Microchip Technology Incorporated in the U.S.A. and other countries.

SQTP is a service mark of Microchip Technology Incorporated in the U.S.A.

All other trademarks mentioned herein are property of their respective companies.

© 2009, Microchip Technology Incorporated, Printed in the U.S.A., All Rights Reserved.

 Printed on recycled paper.

QUALITY MANAGEMENT SYSTEM
CERTIFIED BY DNV
== ISO/TS 16949:2002 ==

Microchip received ISO/TS-16949:2002 certification for its worldwide headquarters, design and wafer fabrication facilities in Chandler and Tempe, Arizona; Gresham, Oregon and design centers in California and India. The Company's quality system processes and procedures are for its PIC[®] MCUs and dsPIC[®] DSCs, KEELOQ[®] code hopping devices, Serial EEPROMs, microperipherals, nonvolatile memory and analog products. In addition, Microchip's quality system for the design and manufacture of development systems is ISO 9001:2000 certified.



MCP3905A/06A ENERGY METER REFERENCE DESIGN

Table of Contents

Preface	1
Chapter 1. Product Overview	
1.1 Introduction	5
1.2 What is the MCP3905A/06A Energy Meter Reference Design?	5
1.3 What the MCP3905A/06A Energy Meter Reference Design Kit Includes	5
Chapter 2. Installation and Operation	
2.1 Introduction	7
2.2 Features	7
2.3 Getting Started	8
2.4 Energy Meter Reference Design Overview	9
2.5 Front-Side Of PCB Detailed Description	10
2.6 Back Side Of PCB Detailed Description	11
Appendix A. Schematics and Layouts	
A.1 Introduction	13
A.2 Schematics and PCB Layout	13
A.3 Board Schematic	14
A.4 Board Layout – Top Layer	15
A.5 Board Layout – Bottom Layer	15
Appendix B. Bill Of Materials (BOM)	
Worldwide Sales and Service	20

MCP3905A/06A Energy Meter Reference Design

NOTES:

Preface

NOTICE TO CUSTOMERS

All documentation becomes dated, and this manual is no exception. Microchip tools and documentation are constantly evolving to meet customer needs, so some actual dialogs and/or tool descriptions may differ from those in this document. Please refer to our web site (www.microchip.com) to obtain the latest documentation available.

Documents are identified with a “DS” number. This number is located on the bottom of each page, in front of the page number. The numbering convention for the DS number is “DSXXXXA”, where “XXXX” is the document number and “A” is the revision level of the document.

For the most up-to-date information on development tools, see the MPLAB® IDE on-line help. Select the Help menu, and then Topics to open a list of available on-line help files.

INTRODUCTION

This chapter contains general information that will be useful to know before using the MCP3905A/06A Energy Meter Reference Design. Items discussed in this chapter include:

- Document Layout
- Conventions Used in this Guide
- Recommended Reading
- The Microchip Web Site
- Customer Support
- Document Revision History

DOCUMENT LAYOUT

This document describes how to use the MCP3905A/06A Energy Meter Reference Design as a development tool to emulate and debug firmware on a target board. The manual layout is as follows:

- **Chapter 1. “Product Overview”** – Important information about the MCP3905A/06A Energy Meter Reference Design.
- **Chapter 2. “Installation and Operation”** – Provides a detailed description of each block, as well as instructions on how to get started with this board.
- **Appendix A. “Schematics and Layouts”** – Shows the schematic and board layout diagrams for the MCP3905A/06A Energy Meter Reference Design.
- **Appendix B. “Bill Of Materials (BOM)”** – Lists the parts used to build the MCP3905A/06A Energy Meter Reference Design.

MCP3905A/06A Energy Meter Reference Design

CONVENTIONS USED IN THIS GUIDE

This manual uses the following documentation conventions:

DOCUMENTATION CONVENTIONS

Description	Represents	Examples
Arial font:		
Italic characters	Referenced books	<i>MPLAB[®] IDE User's Guide</i>
	Emphasized text	...is the <i>only</i> compiler...
Initial caps	A window	the Output window
	A dialog	the Settings dialog
	A menu selection	select Enable Programmer
Quotes	A field name in a window or dialog	"Save project before build"
Underlined, italic text with right angle bracket	A menu path	<u><i>File>Save</i></u>
Bold characters	A dialog button	Click OK
	A tab	Click the Power tab
N'Rnnnn	A number in verilog format, where N is the total number of digits, R is the radix and n is a digit.	4'b0010, 2'hF1
Text in angle brackets < >	A key on the keyboard	Press <Enter>, <F1>
Courier New font:		
Plain Courier New	Sample source code	#define START
	Filenames	autoexec.bat
	File paths	c:\mcc18\h
	Keywords	_asm, _endasm, static
	Command-line options	-Opa+, -Opa-
	Bit values	0, 1
	Constants	0xFF, 'A'
Italic Courier New	A variable argument	<i>file.o</i> , where <i>file</i> can be any valid filename
Square brackets []	Optional arguments	mcc18 [options] <i>file</i> [options]
Curly brackets and pipe character: { }	Choice of mutually exclusive arguments; an OR selection	errorlevel {0 1}
Ellipses...	Replaces repeated text	var_name [, var_name...]
	Represents code supplied by user	void main (void) { ... }

RECOMMENDED READING

This user's guide describes how to use MCP3905A/06A Energy Meter Reference Design. Other useful documents are listed below. The following Microchip documents are available and recommended as supplemental reference resources.

- **MCP3905 Data Sheet, “Energy Metering IC with Active Real Power Pulse Output” (DS21948)**

This data sheet provides detailed information regarding the MCP3905A device.

- **AN994 Application Note “IEC Compliant Active Energy Meter Design Using The MCP3905A/06A” (DS00994)**

This application note documents the design decisions associated with this reference design.

THE MICROCHIP WEB SITE

Microchip provides online support via our web site at www.microchip.com. This web site is used as a means to make files and information easily available to customers. Accessible by using your favorite Internet browser, the web site contains the following information:

- **Product Support** – Data sheets and errata, application notes and sample programs, design resources, user's guides and hardware support documents, latest software releases and archived software
- **General Technical Support** – Frequently Asked Questions (FAQs), technical support requests, online discussion groups, Microchip consultant program member listing
- **Business of Microchip** – Product selector and ordering guides, latest Microchip press releases, listing of seminars and events, listings of Microchip sales offices, distributors and factory representatives

CUSTOMER SUPPORT

Users of Microchip products can receive assistance through several channels:

- Distributor or Representative
- Local Sales Office
- Field Application Engineer (FAE)
- Technical Support

Customers should contact their distributor, representative or field application engineer (FAE) for support. Local sales offices are also available to help customers. A listing of sales offices and locations is included in the back of this document.

Technical support is available through the web site at: <http://support.microchip.com>

MCP3905A/06A Energy Meter Reference Design

DOCUMENT REVISION HISTORY

Revision B (August 2009)

- Update from MCP3905/06 to MCP3905A/06A devices

Revision A (July 2005)

- Initial Release of this Document

Chapter 1. Product Overview

1.1 INTRODUCTION

This chapter provides an overview of the MCP3905A/06A Energy Meter Reference Design and covers the following topics:

- What is the MCP3905A/06A Energy Meter Reference Design?
- What the MCP3905A/06A Energy Meter Reference Design Kit includes

1.2 WHAT IS THE MCP3905A/06A ENERGY METER REFERENCE DESIGN

The MCP3905A/06A Energy Meter Reference Design device is an energy metering IC that supplies *average active power* information via a pulse output with direct drive for mechanical counters. It also includes a higher-frequency output that supplies instantaneous power information for calibration. The device contains function blocks specific for IEC energy meter compliance, such as a no-load threshold and startup current.

The MCP3905A/06A Energy Meter Reference Design Printed Circuit Board (PCB) is used as a reference design for single-phase, residential meters. The MCP3905A/06A Energy Meter Reference Design kit includes all necessary PCB circuits and layout tips for IEC62053 and prior 1036/61036/687 active-energy meter standards compliance. For more information regarding IEC compliance, refer to AN994, “*IEC Compliant Active Energy Meter Design Using The MCP3905A/06A Energy Meter Reference Design*” (DS00994).

1.3 WHAT THE MCP3905A/06A ENERGY METER REFERENCE DESIGN KIT INCLUDES:

This MCP3905A/06A Energy Meter Reference Design kit includes:

- MCP3905A/06A Energy Meter Reference Design, 102-00037
- Important Information Sheet

MCP3905A/06A Energy Meter Reference Design

NOTES:

Chapter 2. Installation and Operation

2.1 INTRODUCTION

The MCP3905A/06A Energy Meter Reference Design is a stand-alone, single-phase residential meter design for active-energy meter designs. For advanced microcontroller-based meter products, this design also serves as the design of the Analog Front-End (AFE). This design includes a low-cost DC power supply circuit and the necessary protection for IEC62053 EMC compliance.

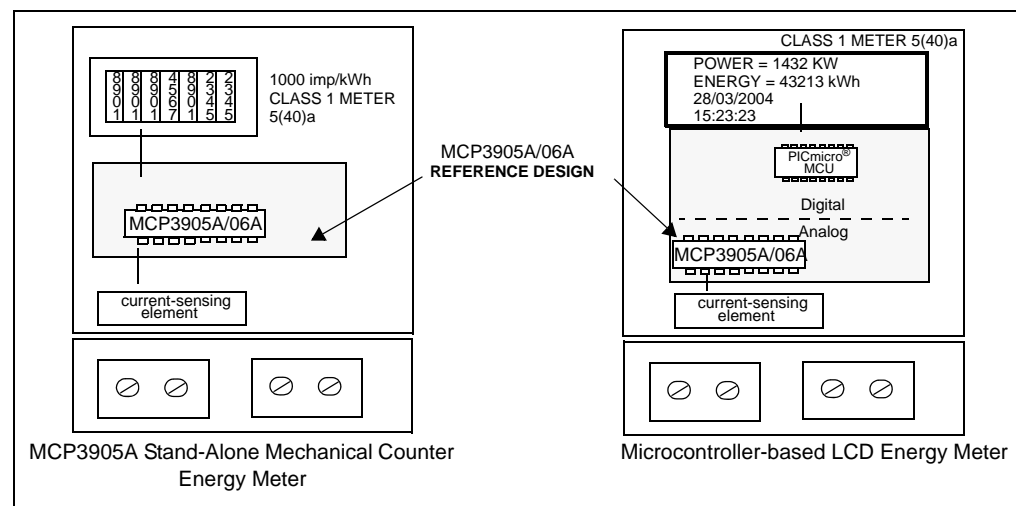


FIGURE 2-1: MCP3905A Stand-Alone Energy Meter and Microcontroller-Based Energy Meter Using MCP3905A AFE Design.

For more detailed information regarding design decisions and an approach to IEC62053 compliance using the circuitry in this board, refer to AN994 “IEC Compliant Active Energy Meter Design Using The MCP3905A/06A” (DS00994).

2.2 FEATURES

The MCP3905A/06A Energy Meter Reference Design PCB has the following features:

- Protection for IEC62053 Energy Meter EMC Immunity Tests
- On-Board DC power supply
- Resistor divider circuit for single-point meter calibration
- Connections for current-sensing shunt or other current sensing element
- Connection for voltage-sensing and power supply biasing
- Connections for mechanical counter and calibration output
- Low-noise PCB layout for small-signal conversion and IEC62053 accuracy compliance for small shunt values
- Low-cost design

MCP3905A/06A Energy Meter Reference Design

2.3 GETTING STARTED

This meter can be manufactured by performing the following two steps detailed in this document. For the external connections, the following terms are used: “phase” refers to the hot (or line) side of the power supply lines. “Neutral” refers to the return wire (or low-side) of the power supply lines.

2.3.1 External Connections

Connections are made to the phase and neutral wire for voltage-detection and AC/DC power supply. The MCP3905A/06A Energy Meter Reference Design is designed to be biased to the phase (or hot) side of a 2-wire power supply system.

1. Connect JP4 to the phase power supply line connection.
2. Connect JP3 to the neutral line.
3. Connect JP1 and JP2 across the shunt.
4. Connect JP5 and JP6 to the mechanical counter.

2.3.2 Calibration of the Frequency Output using the Voltage Divider Calibration Circuit

Each meter must be calibrated using the voltage divider circuit going into Channel 1 of the MCP3905A/06A. A known power is supplied to the meter (e.g., 1000W), and an expected output frequency is the goal (1000 imp/kWh). Start with the highest value resistor and short the resistor using its respective shorting jumper. If the output frequency is too high, remove the shunt. Continue testing each resistor short until all jumpers are tested once. For more detailed information regarding meter calibration and the PCB design approach using the circuitry in this document, refer to AN994, “IEC Compliant Active Energy Meter Design Using The MCP3905A/06A” (DS00994).

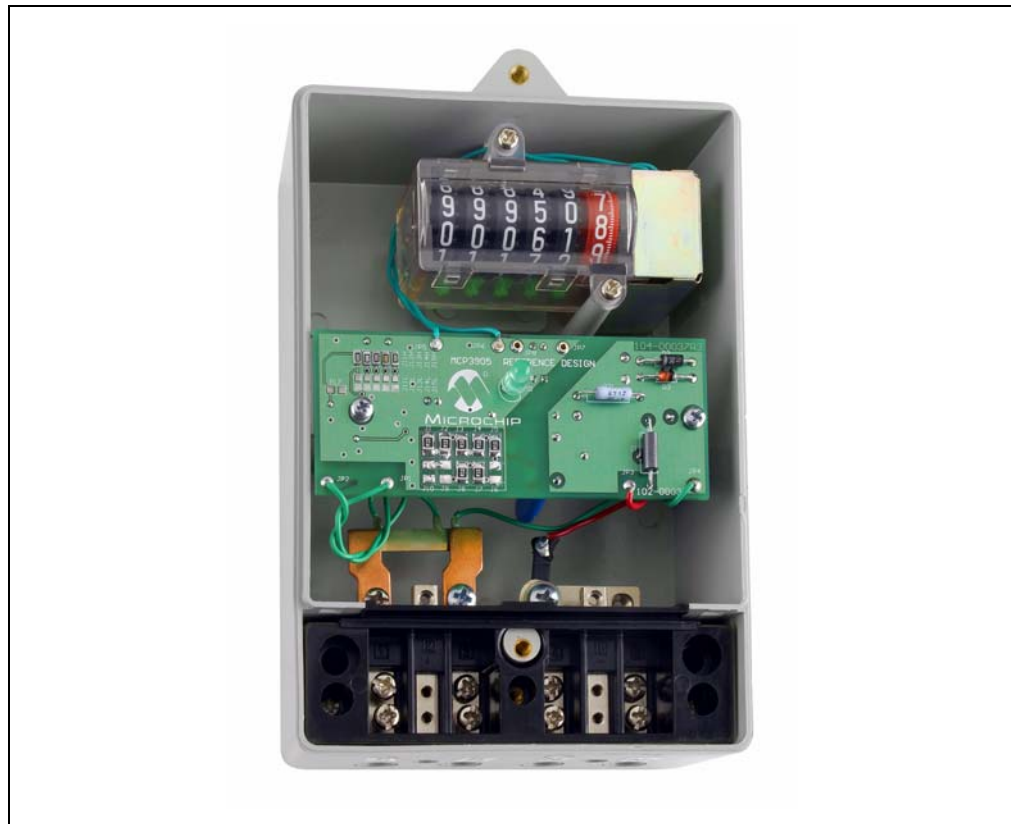


FIGURE 2-2: Photograph of Complete, Stand-Alone MCP3905A Energy Meter.

2.4 ENERGY METER REFERENCE DESIGN OVERVIEW

This reference design can be used as either a stand-alone mechanical counter energy meter, or as the analog front-end design in advanced microcontroller-based meter designs.

The AFE design limits the overall meter accuracy. A low noise, proven AFE circuit and layout is still required for a high-accuracy meter. For both meter types, the current sense input, voltage sense input, calibration scheme, jumper selection and power supply design blocks described here should apply.

This reference design keeps all of the major components on the back-side of the PCB. This minimizes any ill effects from the environment in the situation that a meter case experiences failure. Only the necessary components for calibration, jumper selection and external connections are placed on the front-side of the board. Keeping the larger DC power supply components on the back-side of the board is also necessary for installation in some meter cases with PCB standoffs.

The major components on the front-side of the MCP3905A/06A Energy Meter Reference Design are listed here and described in **Section 2.5 “Front-Side Of PCB Detailed Description”**.

1. Shunts for Gain, FC and HPF selection (J11-J15).
2. Calibration jumpers (J1-J10).
3. Output connections for mechanical counter and calibration (JP5-JP7).
4. Input connection from the current-sensing element (JP1,JP2).
5. Input connection from voltage or phase line and ground reference point (JP3,JP4).
6. The analog ground plane, power supply ground plane, moat.

The major components on the back-side of the MCP3905A/06A Energy Meter Reference Design are listed here and described in **Section 2.6 “Back Side Of PCB Detailed Description”**.

1. MCP3905A (U1).
2. DC Power Supply (C17, C16, U2, C18, etc.).
3. Metal Oxide Varistor (MOV1).
4. Optical isolator for PIC[®] Microcontroller Unit (MCU) or calibration (U3).

These blocks, and their functionality, will be briefly described in the following two sections. For more detailed information regarding design decisions and approaches to IEC1036 compliance, refer to AN994, *“IEC Compliant Active Energy Meter Design Using The MCP3905A/06A”* (DS00994). For a more detailed circuit schematic, refer to **Appendix A. “Schematics and Layouts”** and **Appendix B. “Bill Of Materials (BOM)”**.

MCP3905A/06A Energy Meter Reference Design

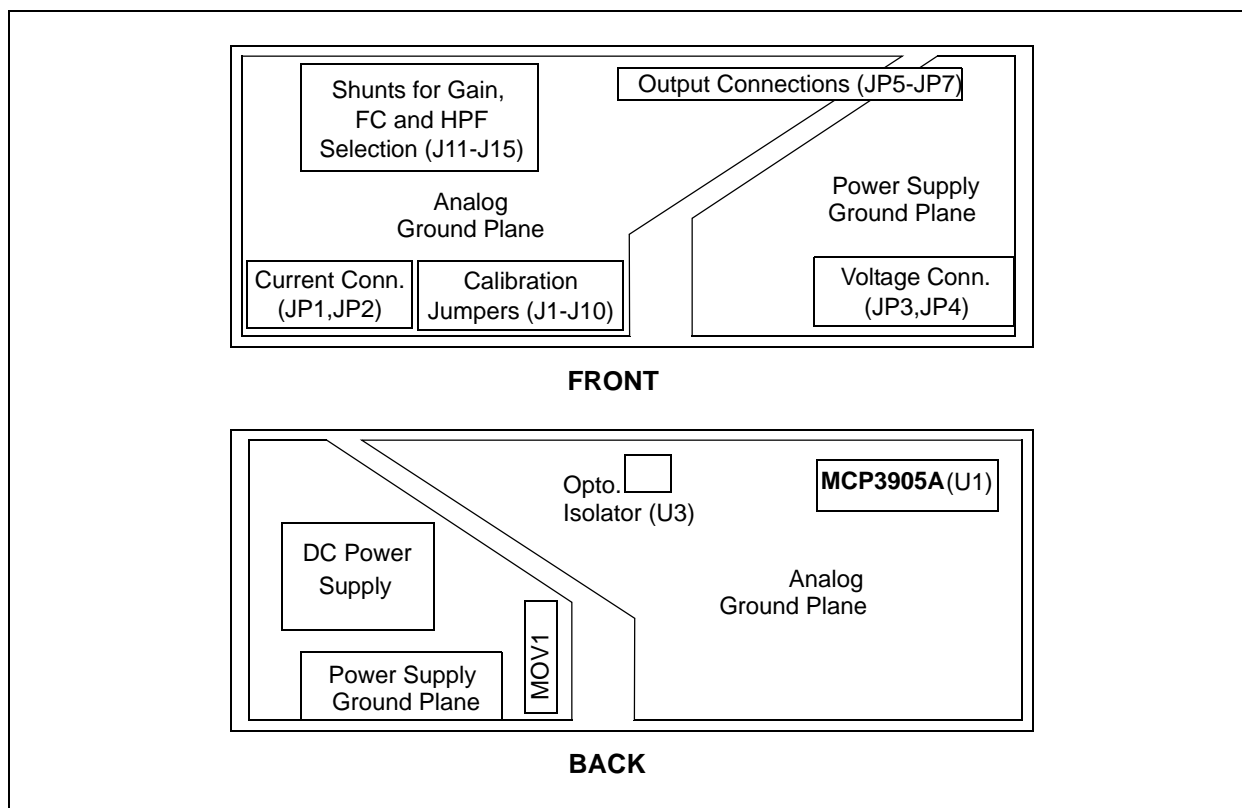


FIGURE 2-3: MCP3905A/06A Energy Meter Reference Design Block Diagram.

2.5 FRONT-SIDE OF PCB DETAILED DESCRIPTION

2.5.1 Shunts for Gain and FC Selection (J11-J15)

Positions for both logic-high and logic-low are here for all gain and frequency constant selections. The logic-high positions are labeled “J1H” and the logic-low positions are labeled “J1L” (Jumper 1 used here as an example). Do not short both the high and the low positions for any one jumper.

2.5.2 Calibration Jumpers (J1-J10)

Calibration resistors for each of these jumper locations are located directly beneath the associated jumper. When a shorting resistor or jumper is in place, the associated calibration resistor is shorted and bypassed.

2.5.3 Output Connections for Mechanical Counter and Calibration (JP5-JP7)

JP5 and JP6 are the differential output drive for the mechanical counter.

JP7 is the calibration or microcontroller output that is connected to HF_{OUT} on the MCP3905A/06A devices. A LED is supplied to assist in any optical calibration schemes.

2.5.4 Connection to Current-Sensing Element (JP1,JP2)

These two connections lead directly through LRC filtering into Channel 0 of the MCP3905A/06A. The schematic in Appendix A uses a low-cost shunt as the current-sensing element. The shunt resistance should be placed in parallel with these two connections, between JP1 and JP2.

2.5.5 Connection to Voltage or Phase Line and Ground Reference Point (JP3,JP4)

These two connections feed the DC power supply circuitry described in **Section 2.6.3 “Metal Oxide Varistor (MOV1)”**. JP4 is connected to the ground of the PCB, and JP3 to the high-side of the DC power supply circuitry. JP3 is also connected to the resistor divider that feeds the analog input of Channel 1 of the MCP3905A/06A. This is the channel for measuring voltage and is connected to the differential input in a single-ended fashion. See **Appendix A. “Schematics and Layouts”** for further detail.

2.6 BACK SIDE OF PCB DETAILED DESCRIPTION

2.6.1 MCP3905A (U1)

From the back side of the board, the MCP3905A/06A is located on the right hand side where the analog ground plane exists. The MCP3905A/06A has appropriate bypass capacitors on V_{DD} coming from the DC power supply circuitry. The MCP3905A/06A has its input logic pins connected to user-selectable jumpers, with the exception of the HPF pin. For this system, the HPF is turned on with this pin connected to V_{DD} ; the device is in AC mode only. The NEG connection is not connected in this reference design; this pin should be left floating. The other three output pins (F_{OUT0} , F_{OUT1} , HF_{OUT}) are connected to nodes JP5, JP6 and JP7 described later in this section.

2.6.2 DC Power Supply (C17, C16, U2, C18, D2)

The DC power supply is created from a half-wave zener diode limited AC signal feeding a 7805 +5V regulator. C17 and C16 divide the AC signal coming directly from the line and designed in this document for 220V. The zener diode D2 limits the peak voltage to 15V.

2.6.3 Metal Oxide Varistor (MOV1)

A MOV is included to suppress any high voltage transients coming through the power lines.

2.6.4 Optical Isolator (U3)

An optical isolator is included in the reference design as an additional level of protection for other circuitry used in advanced meter designs (PICmicro[®] microcontroller, DSP or otherwise). It is connected to the HF_{OUT} frequency output of the MCP3905A. Depending on the meter design, it may not be required. This design is a direct-connect meter that has the entire PCB referenced to the phase or line-side of the power supply. Therefore, any other circuitry would either need to be biased to the same point or isolated using this scheme. A pull-up resistor is required on the output of the optical isolator to allow the HF logic signal to appear.

2.6.5 The Analog Ground Plane, Power Supply Ground Plane, Moat.

The MCP3905A/06A Energy Meter Reference Design PCB is designed for low-noise performance and immunity to external influences, as required by IEC61036. The DC power supply and digital outputs are connected to the power supply ground plane (right-side of the board when looking at it from the front). The lower noise analog ground plane, including the MCP3905A/06A connections, is on the opposite side of the board, separated by a moat between the two ground planes. An inductive choke connects the two grounds.

MCP3905A/06A Energy Meter Reference Design

NOTES:

Appendix A. Schematics and Layouts

A.1 INTRODUCTION

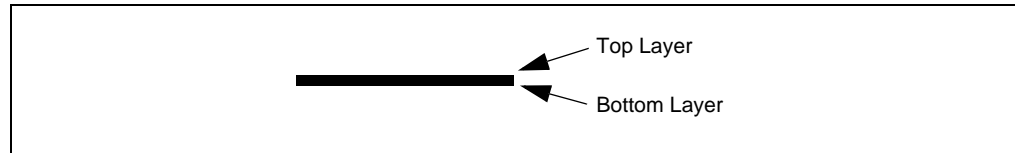
This appendix contains the following schematics and layouts for the MCP3905A/06A Energy Meter Reference Design:

- Board Schematic
- Board – Top Layer
- Board – Bottom Layer

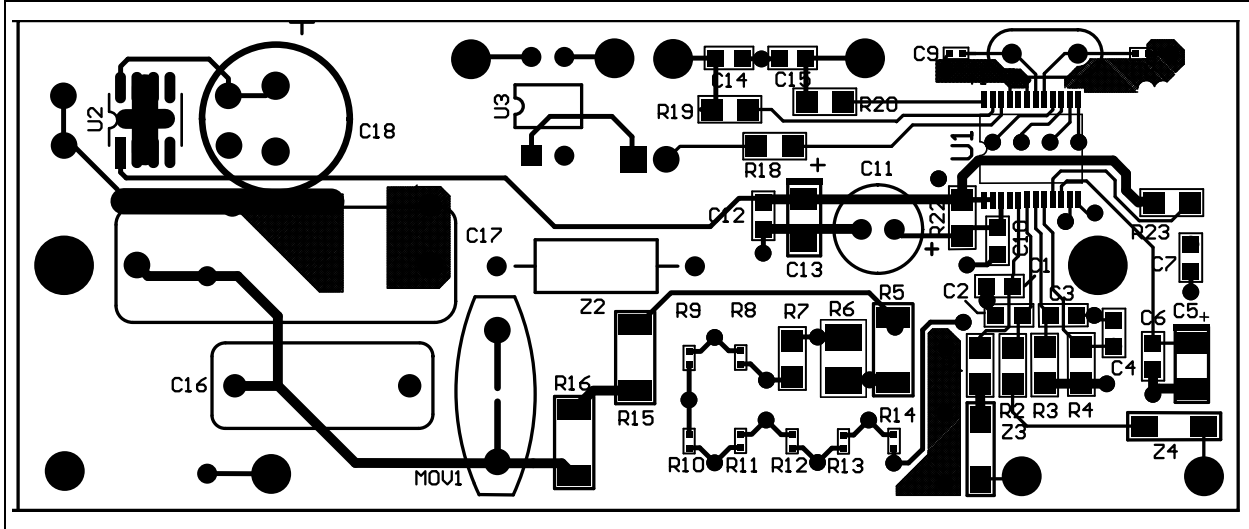
A.2 SCHEMATICS AND PCB LAYOUT

The layer order is shown in Figure A-1.

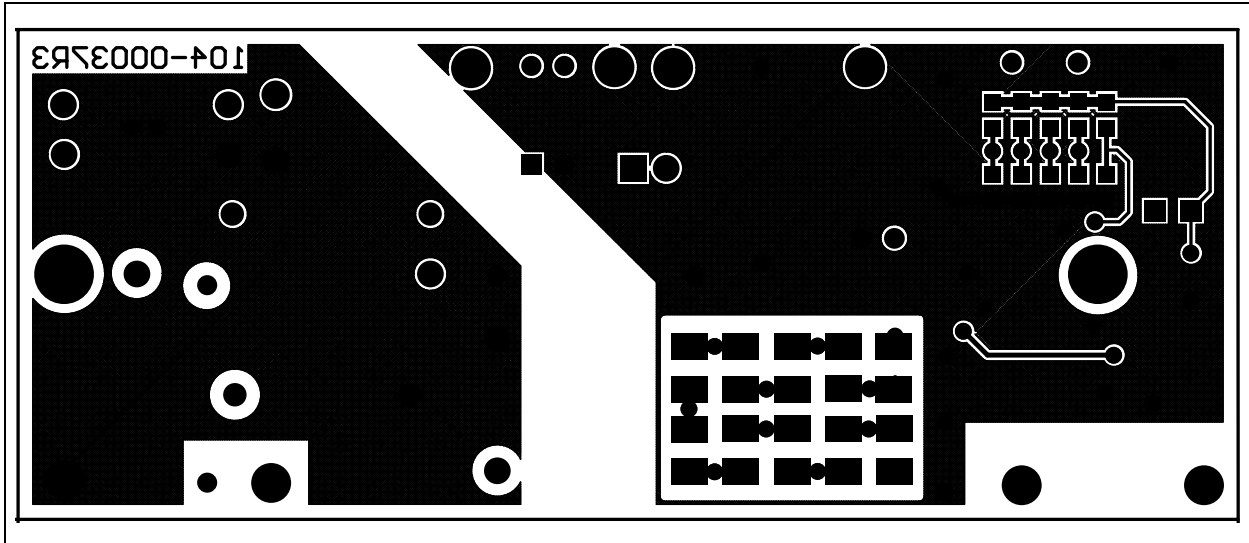
FIGURE A-1: LAYER ORDER



A.4 BOARD LAYOUT – TOP LAYER



A.5 BOARD LAYOUT – BOTTOM LAYER



MCP3905A/06A Energy Meter Reference Design

NOTES:



MCP3905A/06A ENERGY METER REFERENCE DESIGN

Appendix B. Bill Of Materials (BOM)

TABLE B-1: BILL OF MATERIALS (BOM)

Qty	Reference	Description	Manufacturer	Part Number
4	C1, C2, C3, C4	CAP 33000PF 50V CERM X7R 0805	Panasonic® - ECG	ECJ-2VB1H333K
2	C5, C13	CAPACITOR TANT 10UF 6.3V 20% SMD	Kemet® Electronics Corp.	T491A106M006AS
6	C6, C7, C10, C12, C14, C15	CAP .1UF 16V CERAMIC X7R 0805	Panasonic - ECG	ECJ-2VB1C104K
2	C8, C9	CAP 22PF 50V CERAMIC 0402 SMD	Panasonic - ECG	ECJ-0EC1H220J
1	C11	CAP 220UF 10V ELECT FC RADIAL	Panasonic - ECG	EEU-FC1A221S
1	C16	01UF INTERFERFENCE METAL CAP	Panasonic - ECG	ECQ-U2A103MN
1	C17	47UF/630VDC METAL POLY CAP	Panasonic - ECG	ECQ-E6474KF
1	C18	CAP 470UF 35V ELECT FC RADIAL	Panasonic - ECG	EEU-FC1V471
1	D1	LED GREEN DIFFUSED ROUND LONG	Panasonic - SSG	LN31GPH
1	D2	RECTIFIER GPP 400V 1A DO-41	Diodes Inc.	1N4004-T
1	D3	DIODE ZENER 15V 1W 5% DO-41	Diodes Inc.	1N4744A-T
10	J1-J10	RES .1 OHM 1/4W 5% 1210 SMD	Panasonic - ECG	ERJ-14RSJR10U
5	J11H, J12H, J13H, J14H, J15H	RES 0.0 OHM 1/8W 5% 0805 SMD	Panasonic - ECG	ERJ-6GEY0R00V
5	J11L, J12L, J13L, J14L, J15L	Do Not Populate	—	—
8	JP1--JP8	PIN RECPT .032/.046 DIA 0328 SER	Mill-Max® Manufacturing Corp.	0328-0-15-15-34-27-10-0
1	MOV1	Suppressors;Clamping Voltage Maximum:710V	EPCOS	SIOV-S20K275
1	PCB	RoHS Compliant Bare PCB, MCP3905A/06A Energy Meter Reference Design	—	104-00037
5	R1-R4, R23	RES 1.00K OHM 1/8W 1% 1206 SMD	Panasonic - ECG	ERJ-8ENF1001V
1	R5	RES 300K OHM 1/2W 5% 2010 SMD	Panasonic - ECG	ERJ-12ZYJ304U
1	R6	RES 150K OHM 1/4W 5% 1210 SMD	Panasonic - ECG	ERJ-14YJ154U
1	R7	RES 75K OHM 1/4W 5% 1206 SMD	Panasonic - ECG	ERJ-8GEYJ753V
1	R8	RES 39K OHM 1/16W 5% 0402 SMD	Panasonic - ECG	ERJ-2GEJ393X
1	R9	RES 18K OHM 1/16W 5% 0402 SMD	Panasonic - ECG	ERJ-2GEJ183X
1	R10	RES 9.1K OHM 1/16W 5% 0402 SMD	Panasonic - ECG	ERJ-2GEJ912X
1	R11	RES 5.1K OHM 1/16W 5% 0402 SMD	Panasonic - ECG	ERJ-2GEJ512X
1	R12	RES 2.2K OHM 1/16W 5% 0402 SMD	Panasonic - ECG	ERJ-2GEJ222X
1	R13	RES 1.2K OHM 1/16W 5% 0402 SMD	Panasonic - ECG	ERJ-2GEJ122X

Note 1: The components listed in this Bill of Materials are representative of the PCB assembly. The released BOM used in manufacturing uses all RoHS-compliant components.

MCP3905A/06A Energy Meter Reference Design

TABLE B-1: BILL OF MATERIALS (BOM) (CONTINUED)

Qty	Reference	Description	Manufacturer	Part Number
1	R14	RES 560 OHM 1/16W 5% 0402 SMD	Panasonic - ECG	ERJ-2GEJ561X
2	R15, R16	RES 330K OHM 1/2W 5% 2010 SMD	Panasonic - ECG	ERJ-12ZYJ334U
1	R18	RES 820 OHM 1/4W 5% 1206 SMD	Panasonic - ECG	ERJ-8GEYJ821V
2	R19, R20	RES 20 OHM 1/4W 5% 1206 SMD	Panasonic - ECG	ERJ-8GEYJ200V
1	R21	RES 470 OHM 1W 5% METAL OXIDE	Panasonic - ECG	ERG-1SJ471
1	R22	RES 10 OHM 1/4W 5% 1206 SMD	Panasonic - ECG	ERJ-8GEYJ100V
1	U1	Energy Metering Device	Microchip Technology Inc.	MCP3905A-I/SS
1	U2	IC VOLT REG 5V 100MA 8-SOIC	National Semiconductor®	LM78L05ACM
1	U3	1 CHANNEL OPTO COUPLER TRANS DIP	NEC	PS2501-1
1	Y1	CRYSTAL 3.579545MHZ 17PF HC49/US	ECS Inc	ECS-35-17-4
2	Z1, Z2	BEAD CORE SINGLE 3.5X9MM AXIAL	Panasonic - ECG	EXC-ELSA39
2	Z3, Z4	FERRITE 300MA 150 OHM 1806 SMD	Steward® Inc.	LI1806C151R-10

Note 1: The components listed in this Bill of Materials are representative of the PCB assembly. The released BOM used in manufacturing uses all RoHS-compliant components.

Bill Of Materials (BOM)

NOTES:



WORLDWIDE SALES AND SERVICE

AMERICAS

Corporate Office

2355 West Chandler Blvd.
Chandler, AZ 85224-6199
Tel: 480-792-7200
Fax: 480-792-7277
Technical Support:
<http://support.microchip.com>
Web Address:
www.microchip.com

Atlanta

Duluth, GA
Tel: 678-957-9614
Fax: 678-957-1455

Boston

Westborough, MA
Tel: 774-760-0087
Fax: 774-760-0088

Chicago

Itasca, IL
Tel: 630-285-0071
Fax: 630-285-0075

Cleveland

Independence, OH
Tel: 216-447-0464
Fax: 216-447-0643

Dallas

Addison, TX
Tel: 972-818-7423
Fax: 972-818-2924

Detroit

Farmington Hills, MI
Tel: 248-538-2250
Fax: 248-538-2260

Kokomo

Kokomo, IN
Tel: 765-864-8360
Fax: 765-864-8387

Los Angeles

Mission Viejo, CA
Tel: 949-462-9523
Fax: 949-462-9608

Santa Clara

Santa Clara, CA
Tel: 408-961-6444
Fax: 408-961-6445

Toronto

Mississauga, Ontario,
Canada
Tel: 905-673-0699
Fax: 905-673-6509

ASIA/PACIFIC

Asia Pacific Office

Suites 3707-14, 37th Floor
Tower 6, The Gateway
Harbour City, Kowloon
Hong Kong
Tel: 852-2401-1200
Fax: 852-2401-3431

Australia - Sydney

Tel: 61-2-9868-6733
Fax: 61-2-9868-6755

China - Beijing

Tel: 86-10-8528-2100
Fax: 86-10-8528-2104

China - Chengdu

Tel: 86-28-8665-5511
Fax: 86-28-8665-7889

China - Hong Kong SAR

Tel: 852-2401-1200
Fax: 852-2401-3431

China - Nanjing

Tel: 86-25-8473-2460
Fax: 86-25-8473-2470

China - Qingdao

Tel: 86-532-8502-7355
Fax: 86-532-8502-7205

China - Shanghai

Tel: 86-21-5407-5533
Fax: 86-21-5407-5066

China - Shenyang

Tel: 86-24-2334-2829
Fax: 86-24-2334-2393

China - Shenzhen

Tel: 86-755-8203-2660
Fax: 86-755-8203-1760

China - Wuhan

Tel: 86-27-5980-5300
Fax: 86-27-5980-5118

China - Xiamen

Tel: 86-592-2388138
Fax: 86-592-2388130

China - Xian

Tel: 86-29-8833-7252
Fax: 86-29-8833-7256

China - Zhuhai

Tel: 86-756-3210040
Fax: 86-756-3210049

ASIA/PACIFIC

India - Bangalore

Tel: 91-80-3090-4444
Fax: 91-80-3090-4080

India - New Delhi

Tel: 91-11-4160-8631
Fax: 91-11-4160-8632

India - Pune

Tel: 91-20-2566-1512
Fax: 91-20-2566-1513

Japan - Yokohama

Tel: 81-45-471- 6166
Fax: 81-45-471-6122

Korea - Daegu

Tel: 82-53-744-4301
Fax: 82-53-744-4302

Korea - Seoul

Tel: 82-2-554-7200
Fax: 82-2-558-5932 or
82-2-558-5934

Malaysia - Kuala Lumpur

Tel: 60-3-6201-9857
Fax: 60-3-6201-9859

Malaysia - Penang

Tel: 60-4-227-8870
Fax: 60-4-227-4068

Philippines - Manila

Tel: 63-2-634-9065
Fax: 63-2-634-9069

Singapore

Tel: 65-6334-8870
Fax: 65-6334-8850

Taiwan - Hsin Chu

Tel: 886-3-6578-300
Fax: 886-3-6578-370

Taiwan - Kaohsiung

Tel: 886-7-536-4818
Fax: 886-7-536-4803

Taiwan - Taipei

Tel: 886-2-2500-6610
Fax: 886-2-2508-0102

Thailand - Bangkok

Tel: 66-2-694-1351
Fax: 66-2-694-1350

EUROPE

Austria - Wels

Tel: 43-7242-2244-39
Fax: 43-7242-2244-393

Denmark - Copenhagen

Tel: 45-4450-2828
Fax: 45-4485-2829

France - Paris

Tel: 33-1-69-53-63-20
Fax: 33-1-69-30-90-79

Germany - Munich

Tel: 49-89-627-144-0
Fax: 49-89-627-144-44

Italy - Milan

Tel: 39-0331-742611
Fax: 39-0331-466781

Netherlands - Drunen

Tel: 31-416-690399
Fax: 31-416-690340

Spain - Madrid

Tel: 34-91-708-08-90
Fax: 34-91-708-08-91

UK - Wokingham

Tel: 44-118-921-5869
Fax: 44-118-921-5820

03/26/09



Стандарт Электрон Связь

Мы молодая и активно развивающаяся компания в области поставок электронных компонентов. Мы поставляем электронные компоненты отечественного и импортного производства напрямую от производителей и с крупнейших складов мира.

Благодаря сотрудничеству с мировыми поставщиками мы осуществляем комплексные и плановые поставки широчайшего спектра электронных компонентов.

Собственная эффективная логистика и склад в обеспечивает надежную поставку продукции в точно указанные сроки по всей России.

Мы осуществляем техническую поддержку нашим клиентам и предпродажную проверку качества продукции. На все поставляемые продукты мы предоставляем гарантию .

Осуществляем поставки продукции под контролем ВП МО РФ на предприятия военно-промышленного комплекса России , а также работаем в рамках 275 ФЗ с открытием отдельных счетов в уполномоченном банке. Система менеджмента качества компании соответствует требованиям ГОСТ ISO 9001.

Минимальные сроки поставки, гибкие цены, неограниченный ассортимент и индивидуальный подход к клиентам являются основой для выстраивания долгосрочного и эффективного сотрудничества с предприятиями радиоэлектронной промышленности, предприятиями ВПК и научно-исследовательскими институтами России.

С нами вы становитесь еще успешнее!

Наши контакты:

Телефон: +7 812 627 14 35

Электронная почта: sales@st-electron.ru

Адрес: 198099, Санкт-Петербург,
Промышленная ул, дом № 19, литера Н,
помещение 100-Н Офис 331