

## Features

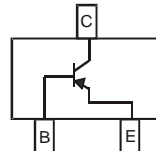
- Epitaxial Planar Die Construction
- Complementary NPN Type Available (MMBT5551)
- Ideal for Low Power Amplification and Switching
- **Lead, Halogen and Antimony Free, RoHS Compliant**
- **"Green" Device (Notes 2 and 3)**

## Mechanical Data

- Case: SOT-23
- Case Material: Molded Plastic. UL Flammability Classification Rating 94V-0
- Moisture Sensitivity: Level 1 per J-STD-020D
- Terminal Connections: See Diagram
- Terminals: Solderable per MIL-STD-202, Method 208
- Lead Free Plating (Matte Tin Finish annealed over Alloy 42 leadframe).
- Marking Information: See Page 3
- Ordering Information: See Page 3
- Weight: 0.008 grams (approximate)



Top View



Device Schematic

## Maximum Ratings @ $T_A = 25^\circ\text{C}$ unless otherwise specified

| Characteristic                          | Symbol    | Value | Unit |
|---|-----------|-------|------|
| Collector-Base Voltage                  | $V_{CBO}$ | -160  | V    |
| Collector-Emitter Voltage               | $V_{CEO}$ | -150  | V    |
| Emitter-Base Voltage                    | $V_{EBO}$ | -5.0  | V    |
| Collector Current - Continuous (Note 1) | $I_C$     | -600  | mA   |

## Thermal Characteristics

| Characteristic                                   | Symbol          | Value       | Unit                      |
|--|-----------------|-------------|---------------------------|
| Power Dissipation (Note 1)                       | $P_D$           | 300         | mW                        |
| Thermal Resistance, Junction to Ambient (Note 1) | $R_{\theta JA}$ | 417         | $^\circ\text{C}/\text{W}$ |
| Operating and Storage Temperature Range          | $T_J, T_{STG}$  | -55 to +150 | $^\circ\text{C}$          |

- Notes:
1. Device mounted on FR-4 PCB, 1 inch x 0.85 inch x 0.062 inch; pad layout as shown on Diodes Inc. suggested pad layout document AP02001, which can be found on our website at <http://www.diodes.com/datasheets/ap02001.pdf>.
  2. No purposefully added lead. Halogen and Antimony Free.
  3. Product manufactured with Data Code V9 (week 33, 2008) and newer are built with Green Molding Compound. Product manufactured prior to Date Code V9 are built with Non-Green Molding Compound and may contain Halogens or  $\text{Sb}_2\text{O}_3$  Fire Retardants.

**Electrical Characteristics** @ $T_A = 25^\circ\text{C}$  unless otherwise specified

| Characteristic                       | Symbol        | Min            | Max           | Unit                | Test Condition   |
|--------------------------------------|---------------|----------------|---------------|---------------------|--|
| <b>OFF CHARACTERISTICS (Note 4)</b>  |               |                |               |                     |  |
| Collector-Base Breakdown Voltage     | $V_{(BR)CBO}$ | -160           | —             | V                   | $I_C = -100\mu\text{A}, I_E = 0$   |
| Collector-Emitter Breakdown Voltage  | $V_{(BR)CEO}$ | -150           | —             | V                   | $I_C = -1.0\text{mA}, I_B = 0$   |
| Emitter-Base Breakdown Voltage       | $V_{(BR)EBO}$ | -5.0           | —             | V                   | $I_E = -10\mu\text{A}, I_C = 0$  |
| Collector Cutoff Current             | $I_{CBO}$     | —              | -50           | nA<br>$\mu\text{A}$ | $V_{CB} = -120\text{V}, I_E = 0$<br>$V_{CB} = -120\text{V}, I_E = 0, T_A = 100^\circ\text{C}$  |
| Emitter Cutoff Current               | $I_{EBO}$     | —              | -50           | nA                  | $V_{EB} = -3.0\text{V}, I_C = 0$   |
| <b>ON CHARACTERISTICS (Note 4)</b>   |               |                |               |                     |  |
| DC Current Gain                      | $h_{FE}$      | 50<br>60<br>50 | —<br>240<br>— | —                   | $I_C = -1.0\text{mA}, V_{CE} = -5.0\text{V}$<br>$I_C = -10\text{mA}, V_{CE} = -5.0\text{V}$<br>$I_C = -50\text{mA}, V_{CE} = -5.0\text{V}$ |
| Collector-Emitter Saturation Voltage | $V_{CE(SAT)}$ | —              | -0.2<br>-0.5  | V                   | $I_C = -10\text{mA}, I_B = -1.0\text{mA}$<br>$I_C = -50\text{mA}, I_B = -5.0\text{mA}$   |
| Base-Emitter Saturation Voltage      | $V_{BE(SAT)}$ | —              | -1.0          | V                   | $I_C = -10\text{mA}, I_B = -1.0\text{mA}$<br>$I_C = -50\text{mA}, I_B = -5.0\text{mA}$   |
| <b>SMALL SIGNAL CHARACTERISTICS</b>  |               |                |               |                     |  |
| Output Capacitance                   | $C_{obo}$     | —              | 6.0           | pF                  | $V_{CB} = -10\text{V}, f = 1.0\text{MHz}, I_E = 0$   |
| Small Signal Current Gain            | $h_{fe}$      | 40             | 200           | —                   | $V_{CE} = -10\text{V}, I_C = -1.0\text{mA}, f = 1.0\text{kHz}$   |
| Current Gain-Bandwidth Product       | $f_T$         | 100            | 300           | MHz                 | $V_{CE} = -10\text{V}, I_C = -10\text{mA}, f = 100\text{MHz}$  |
| Noise Figure                         | NF            | —              | 8.0           | dB                  | $V_{CE} = -5.0\text{V}, I_C = -200\mu\text{A}, R_S = 10\Omega, f = 1.0\text{kHz}$  |

Notes: 4. Short duration pulse test used to minimize self-heating effect.

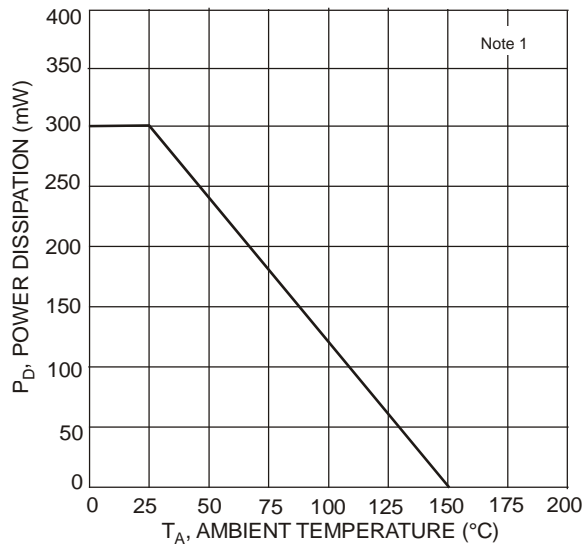


Fig. 1 Power Dissipation vs. Ambient Temperature

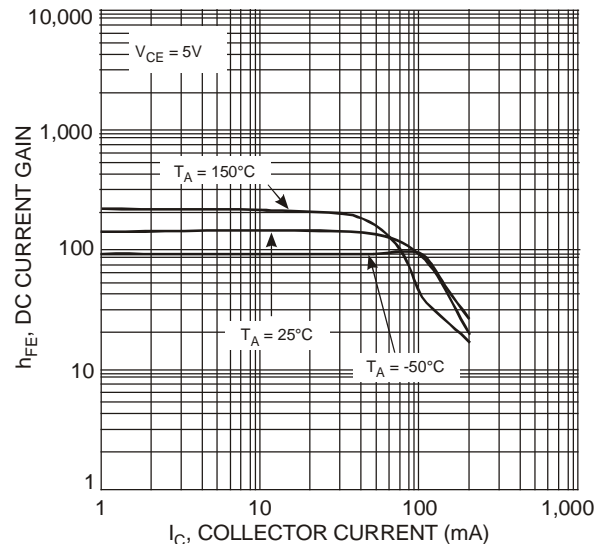


Fig. 2 Typical DC Current Gain vs. Collector Current

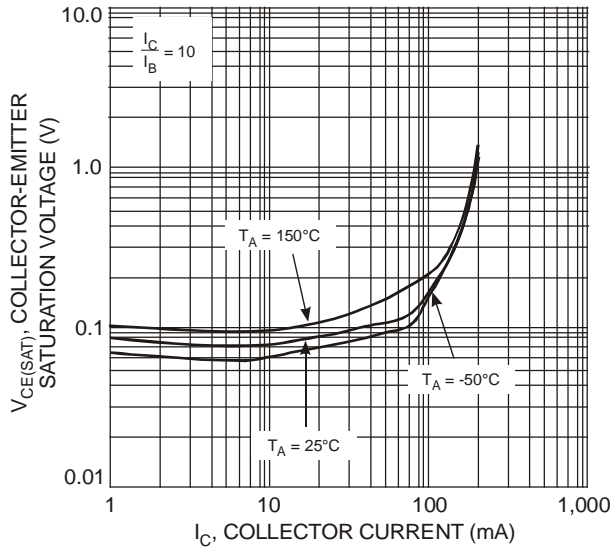


Fig. 3 Typical Collector-Emitter Saturation Voltage vs. Collector Current

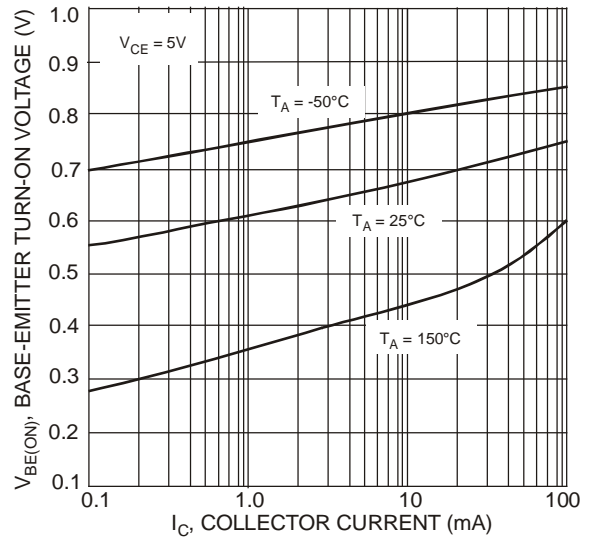


Fig. 4 Typical Base-Emitter Turn-On Voltage vs. Collector Current

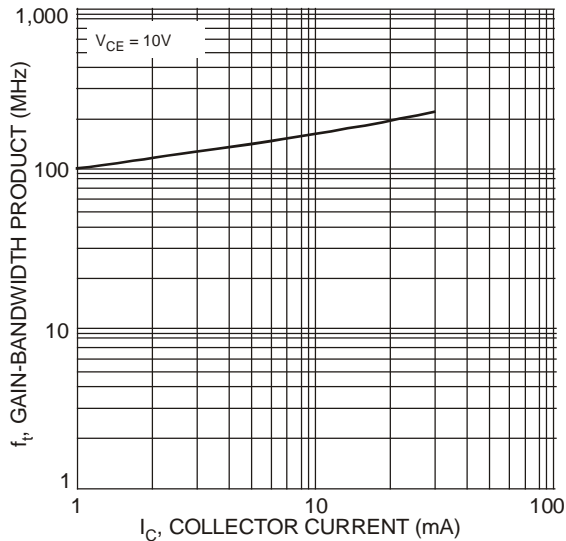


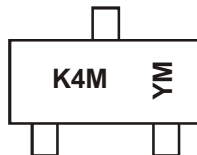
Fig. 5 Typical Gain-Bandwidth Product vs. Collector Current

## Ordering Information (Note 5)

| Part Number  | Case   | Packaging        |
|--------------|--------|------------------|
| MMBT5401-7-F | SOT-23 | 3000/Tape & Reel |

Notes: 5. For packaging details, go to our website at <http://www.diodes.com/datasheets/ap02007.pdf>.

## Marking Information

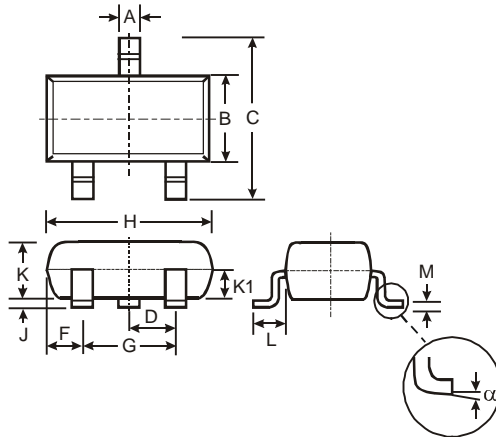


K4M = Product Type Marking Code  
 YM = Date Code Marking  
 Y = Year (ex: N = 2002)  
 M = Month (ex: 9 = September)

### Date Code Key

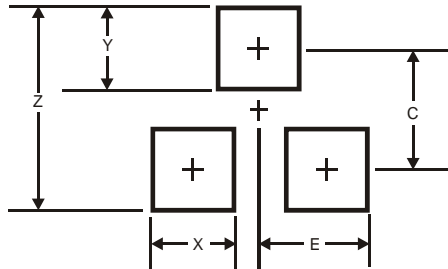
| Year  | 1998 | 1999 | 2000 | 2001 | 2002 | 2003 | 2004 | 2005 | 2006 | 2007 | 2008 | 2009 | 2010 | 2011 | 2012 | 2013 | 2014 | 2015 |
|-------|------|------|------|------|------|------|------|------|------|------|------|------|------|------|------|------|------|------|
| Code  | J    | K    | L    | M    | N    | P    | R    | S    | T    | U    | V    | W    | X    | Y    | Z    | A    | B    | C    |
| Month | Jan  | Feb  | Mar  | Apr  | May  | Jun  | Jul  | Aug  | Sep  | Oct  | Nov  | Dec  |      |      |      |      |      |      |
| Code  | 1    | 2    | 3    | 4    | 5    | 6    | 7    | 8    | 9    | O    | N    | D    |      |      |      |      |      |      |

**Package Outline Dimensions**



| SOT-23               |       |      |       |
|----------------------|-------|------|-------|
| Dim                  | Min   | Max  | Typ   |
| A                    | 0.37  | 0.51 | 0.40  |
| B                    | 1.20  | 1.40 | 1.30  |
| C                    | 2.30  | 2.50 | 2.40  |
| D                    | 0.89  | 1.03 | 0.915 |
| F                    | 0.45  | 0.60 | 0.535 |
| G                    | 1.78  | 2.05 | 1.83  |
| H                    | 2.80  | 3.00 | 2.90  |
| J                    | 0.013 | 0.10 | 0.05  |
| K                    | 0.903 | 1.10 | 1.00  |
| K1                   | -     | -    | 0.400 |
| L                    | 0.45  | 0.61 | 0.55  |
| M                    | 0.085 | 0.18 | 0.11  |
| α                    | 0°    | 8°   | -     |
| All Dimensions in mm |       |      |       |

**Suggested Pad Layout**



| Dimensions | Value (in mm) |
|------------|---------------|
| Z          | 2.9           |
| X          | 0.8           |
| Y          | 0.9           |
| C          | 2.0           |
| E          | 1.35          |

**IMPORTANT NOTICE**

Diodes Incorporated and its subsidiaries reserve the right to make modifications, enhancements, improvements, corrections or other changes without further notice to any product herein. Diodes Incorporated does not assume any liability arising out of the application or use of any product described herein; neither does it convey any license under its patent rights, nor the rights of others. The user of products in such applications shall assume all risks of such use and will agree to hold Diodes Incorporated and all the companies whose products are represented on our website, harmless against all damages.

**LIFE SUPPORT**

Diodes Incorporated products are not authorized for use as critical components in life support devices or systems without the expressed written approval of the President of Diodes Incorporated.



**Стандарт  
Электрон  
Связь**

Мы молодая и активно развивающаяся компания в области поставок электронных компонентов. Мы поставляем электронные компоненты отечественного и импортного производства напрямую от производителей и с крупнейших складов мира.

Благодаря сотрудничеству с мировыми поставщиками мы осуществляем комплексные и плановые поставки широчайшего спектра электронных компонентов.

Собственная эффективная логистика и склад в обеспечивает надежную поставку продукции в точно указанные сроки по всей России.

Мы осуществляем техническую поддержку нашим клиентам и предпродажную проверку качества продукции. На все поставляемые продукты мы предоставляем гарантию .

Осуществляем поставки продукции под контролем ВП МО РФ на предприятия военно-промышленного комплекса России , а также работаем в рамках 275 ФЗ с открытием отдельных счетов в уполномоченном банке. Система менеджмента качества компании соответствует требованиям ГОСТ ISO 9001.

Минимальные сроки поставки, гибкие цены, неограниченный ассортимент и индивидуальный подход к клиентам являются основой для выстраивания долгосрочного и эффективного сотрудничества с предприятиями радиоэлектронной промышленности, предприятиями ВПК и научно-исследовательскими институтами России.

С нами вы становитесь еще успешнее!

**Наши контакты:**

**Телефон:** +7 812 627 14 35

**Электронная почта:** [sales@st-electron.ru](mailto:sales@st-electron.ru)

**Адрес:** 198099, Санкт-Петербург,  
Промышленная ул, дом № 19, литера Н,  
помещение 100-Н Офис 331