



SCALABLE CONSOLE
ACCESS SERVER



DIGI CONNECT IT 4

Out-of-band management of network and server equipment

Digi Connect® IT 4 remote console access server ensures continuous network uptime to all your remote locations by functioning as an always-on cellular out-of-band (OOB) gateway for branch offices, retail stores, kiosks and other sites, even when the primary network is down. You can maximize WAN resilience with failover to 4G LTE networks, while built-in multicarrier capabilities lets you instantly switch to the carrier of choice.

For enterprises that need serial access for remote equipment monitoring, Digi Connect IT 4 offers the most complete and secure cellular-based solution in the industry. Digi Connect IT 4 allows identification and remediation of issues at the network edge before they can become a work order or fail.

Digi TrustFence®, a suite of hardware and firmware security features, ensures the integrity of Digi Connect IT 4 safeguards. Pair Digi Connect IT 4 with a dedicated wire line connection to ensure dual ISP connectivity, maximum uptime and complete business continuity for organizations that demand uninterrupted network access and availability.

Digi Remote Manager® (DRM) and Digi Connect IT 4 provide easy setup, configuration, security management and serial port monitoring of large installations of remote Digi devices. DRM offers web-based device management for any Digi cellular routers, gateways or third-party devices with a single-pane-of-glass view to monitor and access Digi Connect IT remote console access servers and the critical IT assets to which they are connected.

FEATURES AND BENEFITS

- Advanced modem management software
- OOB management and recovery using secure SMS
- Add instant business continuity to any location with primary or backup LTE connectivity
- Protect your business and brand with a simple solution to avoid network disruptions and outages
- Modular cellular support allows “right-sizing” cellular speeds and costs
- Operates independently from in-band network
- Digi Foundations™ 1-, 3- or 5-year subscription available

RELATED PRODUCTS



Digi CORE LTE
modem



Digi ConnectPort®
TS

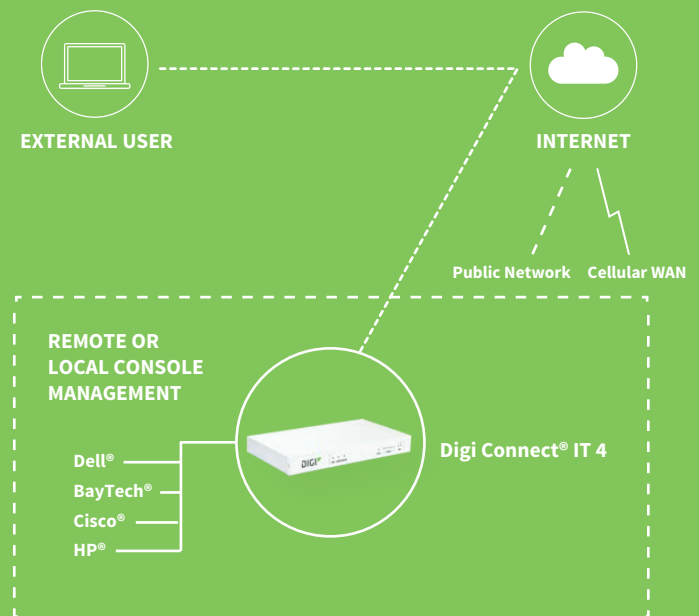


Digi 6310-DX



Digi
AnywhereUSB®

APPLICATION EXAMPLE



SPECIFICATIONS	DIGI CONNECT® IT 4
CELLULAR	Cat 6, Cat 4 EMEA, Cat 4 North America
MODULE SUPPORT	A suite of Digi CORE™ LTE modems
SOFTWARE AND MANAGEMENT	
REMOTE MANAGEMENT	Digi Remote Manager® (cloud based)
LOCAL MANAGEMENT	WebUI (HTTP/HTTPS); CLI (Console, SSH)
NETWORK	
ETHERNET	(2) RJ-45; 10/100 Mbps (auto-sensing)
CONNECTORS	
SERIAL	(4) Serial ports RJ-45 RS-232
PHYSICAL	
DIMENSIONS (L x W x H)	228 mm x 127 mm x 25 mm (9.0 in x 5.0 in x 1.0 in)
WEIGHT	0.73 kg (26 oz)
STATUS LEDS	Power, online, LTE status, (5) signal strength and (2) SIM selection
POWER REQUIREMENTS	
POWER INPUT	18 V DC, .66 A; 100-240 AC
ENVIRONMENTAL	
OPERATING TEMPERATURE	0° C to 40° C (32° F to 104° F)
RELATIVE HUMIDITY	5% to 95% (non-condensing)
APPROVALS	
SAFETY	IEC62368-1, EN60950
EMISSIONS/IMMUNITY	FCC Part 15, Subpart B, Class A; CE, RCM; CAN ICES03(B)/NMB-3(B)
WARRANTY	
PRODUCT WARRANTY*	3-year + Digi Foundations™

*Digi Foundations can extend the standard three-year warranty to a Limited Lifetime Warranty that provides replacement with a new or similar Digi product for a period of five years from the date of purchase. After five years from the purchase date, the warranty value will revert to a 40 percent credit towards the MSRP of an equivalent product from Digi.

PRODUCT IMAGES

DIGI CONNECT IT 4 FRONT

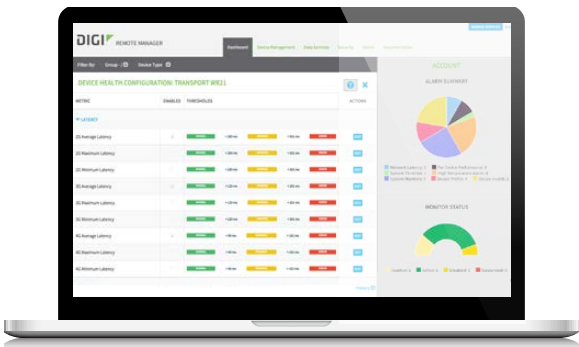


DIGI CONNECT IT 4 BACK



ENTERPRISE SOFTWARE	DESCRIPTION
PROTOCOL SUPPORT	HTTP, HTTPS, FTP, SFTP, SSL, SNMP v3, SSH and CLI for web management; remote management via Digi Remote Manager; SMS management
SECURITY/VPN	IP filtering, stateful inspection firewall with scripting, address and port translation; VPN: IPSec with IKEv1, IKEv2, NAT Traversal; SSL, SSLv2, SSLv3, FIPS 197; PPTP, L2TP; no limit VPN tunnels; Cryptology: SHA-1, SHA-2, MD5, RSA; Encryption: DES, 3DES and AES up to 256-bit (CBC mode for IPSec); Authentication: RADIUS, TACACS+, MAC address filtering; VLAN support
ROUTING/FAILOVER	IP pass-through; NAT, NAPT with IP port forwarding; Ethernet bridging; GRE; Multicast routing; Routing protocols: PPP, OSPF, BGP, RSTP (Rapid Spanning Tree Protocol); IP failover: VRRP, automatic failover/failback to secondary connection
OTHER PROTOCOLS	QoS via TOS/DSCP/WRED; UDP/TCP to serial

DIGI REMOTE MANAGER®



CAPABILITIES

- Centralized management of remote devices over 3G/4G/LTE
- Define standard configurations and automatically monitor individual devices for PCI security compliance
- Report and alert on performance statistics, including connection history, signal quality, latency, data usage and packet loss
- No servers or applications to operate and maintain
- Complete tasks for your entire device network in minutes
- Edit configurations and update firmware for your individual devices or groups
- Monitor the status and location of your remote device via a web browser
- Active or deactivate cellular lines and monitor data to ensure you never incur overage charges

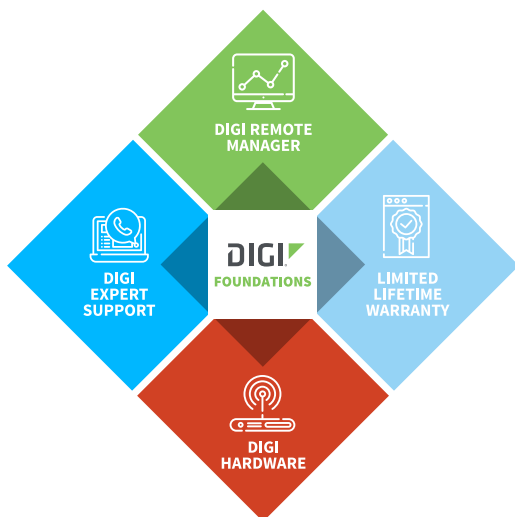
INFRASTRUCTURE

- Hosted in a commercial-grade SAS 70-certified environment
- Superior availability, operating to 99.9% or greater
- Open APIs available to support application development

SECURITY

- Certified SSAE-16 facilities
- Over 175 security controls in place to protect your data
- Enables compliance with security frameworks like PCI, HIPAA, NIST and more
- Earned SkyHigh's Cloud Trust Program highest ranking of Enterprise-Ready

DIGI FOUNDATIONS™



IT'S TIME TO CONNECT WITH CONFIDENCE

The convenient, comprehensive and secure way to integrate IoT communications hardware, device management software, global support and lifetime warranty protection into a connectivity solution to simplify your IoT network growth.

- [Digi Remote Manager®](#) (DRM) gives you a single point of contact, command and control with sophisticated remote device monitoring and management tools
- [Digi Expert Support](#) is available around the clock, seven days a week, around the world with experts ready to provide technical support by phone, email or online
- [Digi Limited Lifetime Warranty](#) lowers the total cost of ownership with hardware protection and equipment upgrades to expand your network as needs evolve

Digi Foundations, with DRM, simplifies network and device management – for hundreds or hundreds-of-thousands of Digi or third-party devices – with options to upgrade as technology evolves. Isn't it time you got better connected?

For more information visit: digi.com/foundations

PART NUMBERS**DIGI CONNECT IT 4**

ASB-5402-RM00-GLB	Digi Connect IT 4 remote console access server, no cellular module, all regions
ASB-5402-RM04-OUS	Digi Connect IT 4 remote console access server; Cat 4, US only; Cellular certifications: AT&T, Verizon, T-Mobile, PTCRB
ASB-5402-RME4-GLB	Digi Connect IT 4 remote console access server; Cat 4 / HSPA+, EMEA
ASB-5402-RM06-GLB	Digi Connect IT 4 remote console access server; Cat 6 global
ASB-5402-RM16-GLB	Digi Connect IT 4 remote console access server; Cat 6 AU, NZ, JP, KR

ACCESSORIES**FOR USE WITH ALL DIGI CONNECT IT, DIGI CM™ AND DIGI PASSPORT® MODELS****Serial cable adapters (for Digi Passport, Digi CM, Digi Connect IT)**

170012	(1) Cellular antenna (black) for use with Digi products that have LTE modems
76000670	Digi DB-25 male modem adapter (8-pack)
76000671	Digi DB-9 female console adapter (8-pack)
76000672	Digi DB-25 male console adapter (8-pack)
76000673	Digi DB-25 female console adapter (8-pack)
76000702	Digi DB-9 male modem adapter (8-pack)

PART NUMBERS**DIGI CORE LTE MODEMS****For use with all Digi Connect IT 4 models purchased without a module (RM00 versions)**

ASB-1002-CM03-GLB	Digi CORE 1002-CM LTE modem; Cat 3; LTE / HSPA+ / EV-DO; Cellular certifications: Verizon, AT&T, Sprint, T-Mobile, PTCRB
ASB-1002-CM04-OUS	Digi CORE 1002-CM LTE modem; Cat 4; LTE / HSPA+; Cellular certifications: Verizon, AT&T, T-Mobile, PTCRB
ASB-1002-CM06-GLB	Digi CORE 1002-CM LTE modem; Cat 6; LTE-A / HSPA+; Cellular certifications: Verizon, AT&T, Sprint, T-Mobile, PTCRB
ASB-1002-CM16-GLB	Digi CORE 1002-CM LTE modem; Cat 6; LTE-A / HSPA+; Cellular certifications: Australia / New Zealand

DIGI FOUNDATIONS™**AVAILABLE FOR DIGI CONNECT IT 4**

DGF-BDL-STAN-1YR	Digi Foundations add-on, 1 year, includes Expert Support, Digi Remote Manager, and Limited Lifetime Warranty
DGF-BDL-STAN-3YR	Digi Foundations add-on, 3 years, includes Expert Support, Digi Remote Manager, and Limited Lifetime Warranty
DGF-BDL-STAN-5YR	Digi Foundations add-on, 5 years, includes Expert Support, Digi Remote Manager, and Limited Lifetime Warranty

**FOR MORE INFORMATION
PLEASE VISIT DIGI.COM**

DIGI SERVICE AND SUPPORT / You can purchase with confidence knowing that Digi is always available to serve you with expert technical support and our industry leading warranty. For detailed information visit www.digi.com/support.

© 1996-2019 Digi International Inc. All rights reserved.
All trademarks are the property of their respective owners.

91004387
B4/1019

DIGI INTERNATIONAL WORLDWIDE HQ
877-912-3444 / 952-912-3444 / www.digi.com

DIGI INTERNATIONAL GERMANY
+49-89-540-428-0

DIGI INTERNATIONAL JAPAN
+81-3-5428-0261 / www.digi-intl.co.jp

DIGI INTERNATIONAL SINGAPORE
+65-6213-5380

DIGI INTERNATIONAL CHINA
+86-21-50492199 / www.digi.com.cn





Стандарт Электрон Связь

Мы молодая и активно развивающаяся компания в области поставок электронных компонентов. Мы поставляем электронные компоненты отечественного и импортного производства напрямую от производителей и с крупнейших складов мира.

Благодаря сотрудничеству с мировыми поставщиками мы осуществляем комплексные и плановые поставки широчайшего спектра электронных компонентов.

Собственная эффективная логистика и склад в обеспечивает надежную поставку продукции в точно указанные сроки по всей России.

Мы осуществляем техническую поддержку нашим клиентам и предпродажную проверку качества продукции. На все поставляемые продукты мы предоставляем гарантию .

Осуществляем поставки продукции под контролем ВП МО РФ на предприятия военно-промышленного комплекса России , а также работаем в рамках 275 ФЗ с открытием отдельных счетов в уполномоченном банке. Система менеджмента качества компании соответствует требованиям ГОСТ ISO 9001.

Минимальные сроки поставки, гибкие цены, неограниченный ассортимент и индивидуальный подход к клиентам являются основой для выстраивания долгосрочного и эффективного сотрудничества с предприятиями радиоэлектронной промышленности, предприятиями ВПК и научно-исследовательскими институтами России.

С нами вы становитесь еще успешнее!

Наши контакты:

Телефон: +7 812 627 14 35

Электронная почта: sales@st-electron.ru

Адрес: 198099, Санкт-Петербург,
Промышленная ул, дом № 19, литера Н,
помещение 100-Н Офис 331