



# Grove - Barometer (High-Accuracy)

Release date : 9/20/2015

Version : 1.0

Wiki: [http://www.seeedstudio.com/wiki/Grove - Barometer \(High-Accuracy\)](http://www.seeedstudio.com/wiki/Grove_-_Barometer_(High-Accuracy))

Bazaar: <http://www.seeedstudio.com/depot/Grove-Barometer-HighAccuracy-p-1865.html>

## Document Revision History

---

Revision	Date	Author	Description
1.0	Sep 21, 2015	Victor.He	Create file

## Contents

Document Revision History	2
1. Introduction	2
2. Features	3
3. Application ideas	4
4. Specifications	5
5. Usage	6
5.1 With Arduino	6
6. Resources	11

### *Disclaimer*

*For physical injuries and possessions loss caused by those reasons which are not related to product quality, such as operating without following manual guide, natural disasters or force majeure, we take no responsibility for that.*

*Under the supervision of Seeed Technology Inc., this manual has been compiled and published which covered the latest product description and specification. The content of this manual is subject to change without notice.*

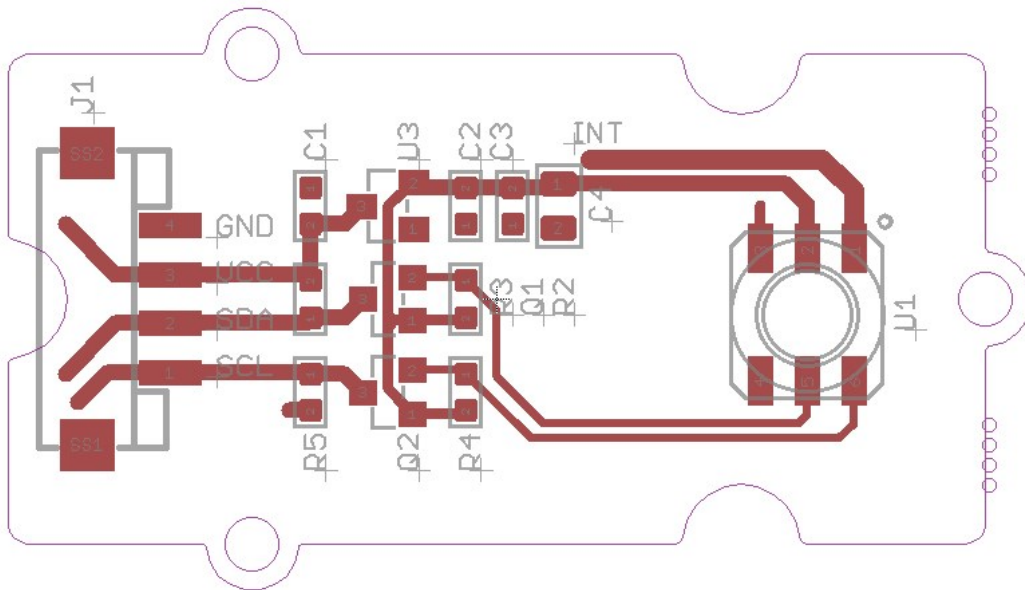
### *Copyright*

*The design of this product (including software) and its accessories is under tutelage of laws. Any action to violate relevant right of our product will be penalized through law. Please consciously observe relevant local laws in the use of this product.*

## 1. Introduction

---

This Grove - Barometer (High-Accuracy) Sensor features a HP206C high-accuracy chip to detect barometric pressure, Altimeter and temperature. It can widely measure pressure ranging from 300mbar~1200mbar, with a super high accuracy of 0.01mbar (0.1m) in ultra-high resolution mode. The chip only accepts 1.8V to 3.6V input voltage. However, with outer circuit added, this module becomes compatible with 3.3V and 5V. Therefore, it can be used on Arduino/Seeeduno or Seeeduno Stalker without modification. It is designed to be connected directly to a micro-controller via the I2C bus.



## 2. Features

---

- Digital two wire (I2C) interface
- Command-based Reading, Compensated (Optional)
- Programmable Events and Interrupt Controls
- Full Data Compensation
- Wide barometric pressure range
- Flexible supply voltage range
- Ultra-low power consumption
- Altitude Resolution down to 0.01 meter
- Temperature measurement included

### 3. Application ideas

---

- High Precision Mobile Altimeter / Barometer
- Industrial Pressure and Temperature Sensor System
- Automotive Systems
- Personal Electronics Altimetry
- Adventure and Sports watches
- Medical Gas Control System
- Weather Station Equipment
- Indoor Navigation and Map Assist
- Heating, Ventilation, Air Conditioning

## 4. Specifications

---

Item	Min	Typical	Max	Unit
Voltage	3.3	5	5.5	VDC
Current	635	/	1100	uA
Pressure Range	300	/	1200	hPa
Faster I2C data transfer	/	/	10	MHZ
Dimension	20.4*41.8*9.7			mm
Weight	/			g



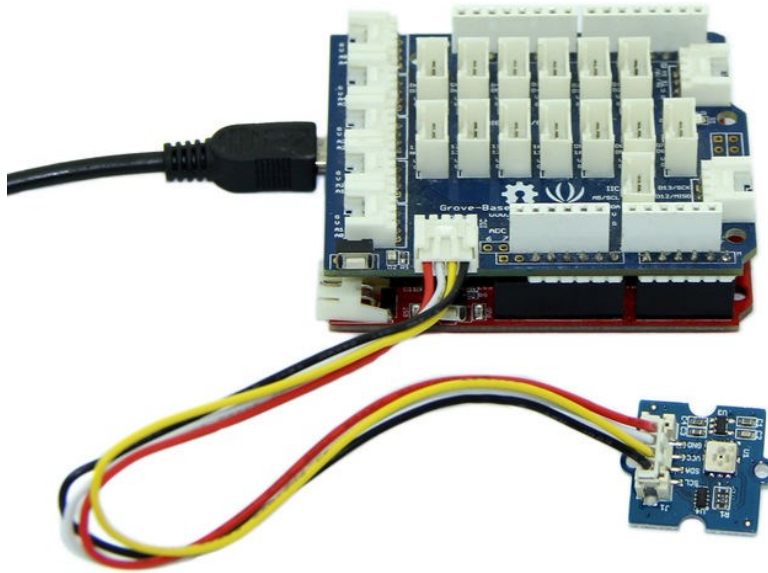
## 5. Usage

---

### 5.1 With [Arduino](#)

Barometric condition is one of the criteria used to predict coming change in weather and deduce altitude above sea level. Here is a demo to show you how to read the barometric data from this Grove - Barometer Sensor.

1. Connect it to IIC port of Seeeduino or Grove - Base Shield via a Grove cable. And connect Arduino to PC via a USB cable.



2. Download the library Grove\_Barometer\_HP20x;Unzip it into the libraries file of Arduino IDE by the path: ..\arduino-1.0.1\libraries.
3. Create a new Arduino sketch and paste the codes below to it or open the code directly by the path: File > Example >Barometer\_Sensor>Barometer\_Sensor.

```
/*  
 * Demo name   : HP20x_dev demo  
 * Usage       : I2C PRECISION BAROMETER AND ALTIMETER [HP206C hopeRF]  
 * Author      : Oliver Wang from Seeed Studio  
 * Version     : V0.1  
 * Change log  : Add kalman filter 2014/04/04  
 */  
  
#include <HP20x_dev.h>
```

```

#include "Arduino.h"
#include "Wire.h"
#include <KalmanFilter.h>
unsigned char ret = 0;

/* Instance */
KalmanFilter t_filter;    //temperature filter
KalmanFilter p_filter;    //pressure filter
KalmanFilter a_filter;    //altitude filter

void setup()
{
  Serial.begin(9600);      // start serial for output

  Serial.println("****HP20x_dev demo by seeed studio****\n");
  Serial.println("Calculation formula: H = [8.5(101325-P)]/100 \n");
  /* Power up,delay 150ms,until voltage is stable */
  delay(150);
  /* Reset HP20x_dev */
  HP20x.begin();
  delay(100);

  /* Determine HP20x_dev is available or not */
  ret = HP20x.isAvailable();
  if(OK_HP20X_DEV == ret)
  {
    Serial.println("HP20x_dev is available.\n");
  }
  else
  {
    Serial.println("HP20x_dev isn't available.\n");
  }
}

void loop()
{
  char display[40];
  if(OK_HP20X_DEV == ret)
  {
    Serial.println("-----\n");
    long Temper = HP20x.ReadTemperature();
  }
}

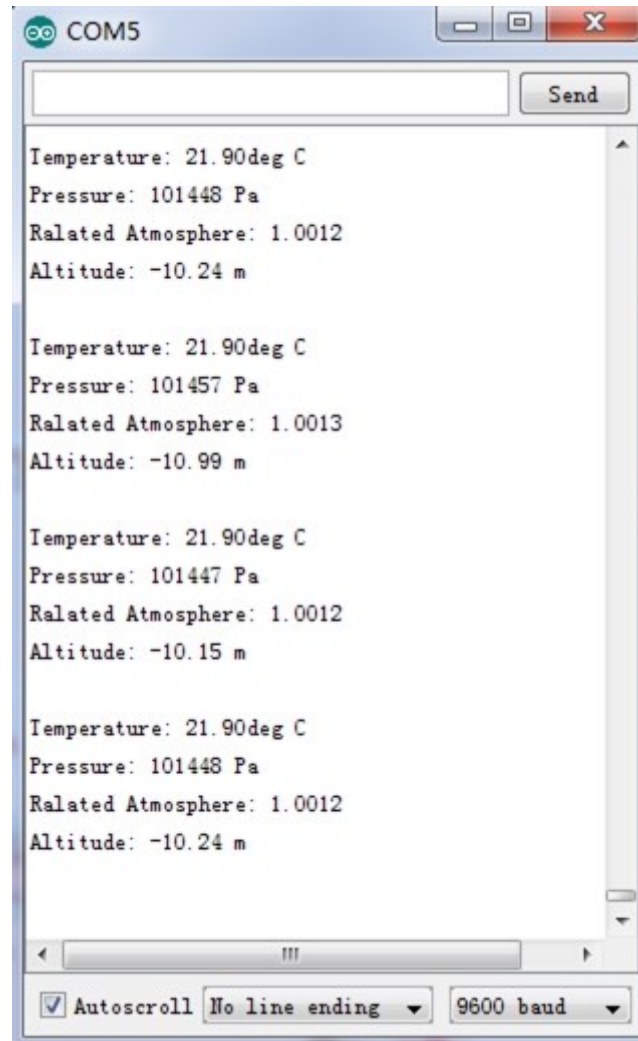
```

```
Serial.println("Temper:");
float t = Temper/100.0;
Serial.print(t);
Serial.println("C.\n");
Serial.println("Filter:");
Serial.print(t_filter.Filter(t));
Serial.println("C.\n");

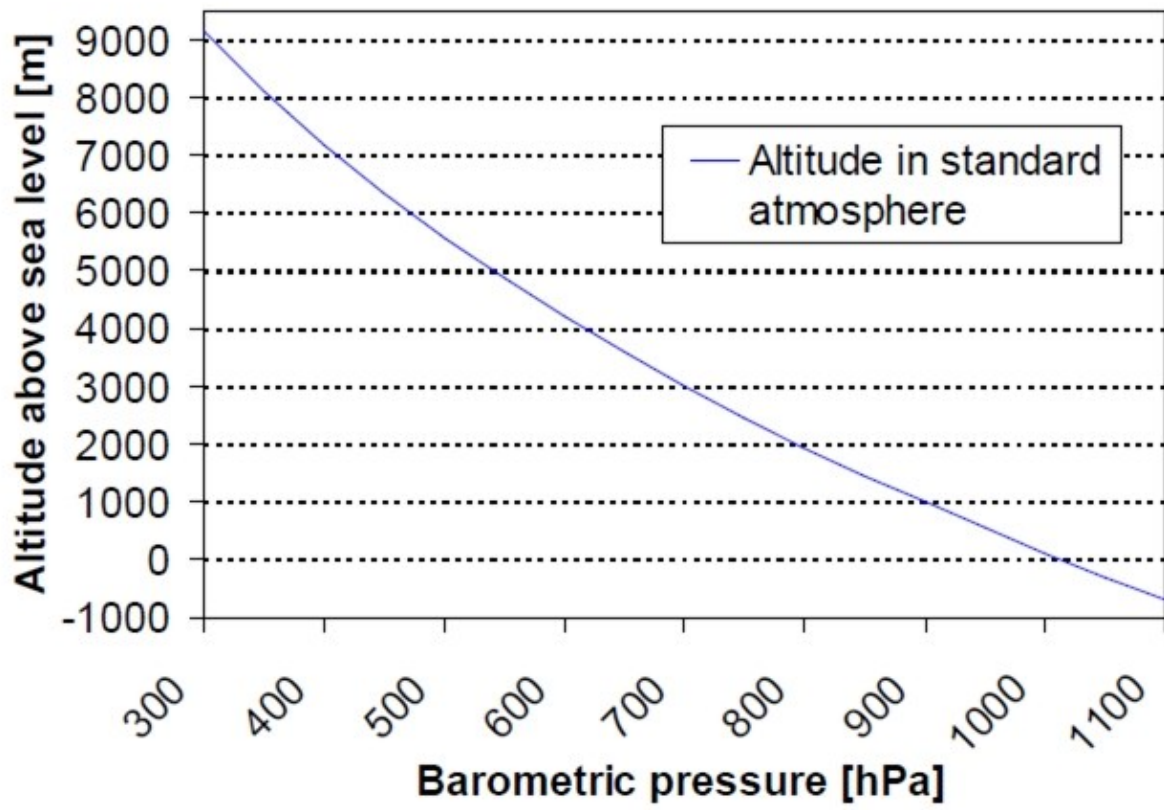
long Pressure = HP20x.ReadPressure();
Serial.println("Pressure:");
t = Pressure/100.0;
Serial.print(t);
Serial.println("hPa.\n");
Serial.println("Filter:");
Serial.print(p_filter.Filter(t));
Serial.println("hPa\n");

long Altitude = HP20x.ReadAltitude();
Serial.println("Altitude:");
t = Altitude/100.0;
Serial.print(t);
Serial.println("m.\n");
Serial.println("Filter:");
Serial.print(a_filter.Filter(t));
Serial.println("m.\n");
Serial.println("-----\n");
delay(1000);
}
}
```

4. Open the serial monitor to receive the sensor's data including temperature, barometric pressure value, relative atmosphere pressure and altitude.



The following is a reference graph plotting out the relationship between altitude above sea level and barometric pressure.



## 6. Resources

---

[Grove Barometer High-Accuracy v1.0 sch\\_pcb Eagle File](#)

[HP206C Datasheet](#)

[Github repository for Grove Barometer HP20x](#)



**Стандарт  
Электрон  
Связь**

Мы молодая и активно развивающаяся компания в области поставок электронных компонентов. Мы поставляем электронные компоненты отечественного и импортного производства напрямую от производителей и с крупнейших складов мира.

Благодаря сотрудничеству с мировыми поставщиками мы осуществляем комплексные и плановые поставки широчайшего спектра электронных компонентов.

Собственная эффективная логистика и склад в обеспечивает надежную поставку продукции в точно указанные сроки по всей России.

Мы осуществляем техническую поддержку нашим клиентам и предпродажную проверку качества продукции. На все поставляемые продукты мы предоставляем гарантию .

Осуществляем поставки продукции под контролем ВП МО РФ на предприятия военно-промышленного комплекса России , а также работаем в рамках 275 ФЗ с открытием отдельных счетов в уполномоченном банке. Система менеджмента качества компании соответствует требованиям ГОСТ ISO 9001.

Минимальные сроки поставки, гибкие цены, неограниченный ассортимент и индивидуальный подход к клиентам являются основой для выстраивания долгосрочного и эффективного сотрудничества с предприятиями радиоэлектронной промышленности, предприятиями ВПК и научно-исследовательскими институтами России.

С нами вы становитесь еще успешнее!

**Наши контакты:**

**Телефон:** +7 812 627 14 35

**Электронная почта:** [sales@st-electron.ru](mailto:sales@st-electron.ru)

**Адрес:** 198099, Санкт-Петербург,  
Промышленная ул, дом № 19, литера Н,  
помещение 100-Н Офис 331