

# Gigabit USB 3.0 Device Server

## High Throughput and Enterprise Security

### DS-600



Use USB Devices over the Network in a Secure Enterprise Business Environment

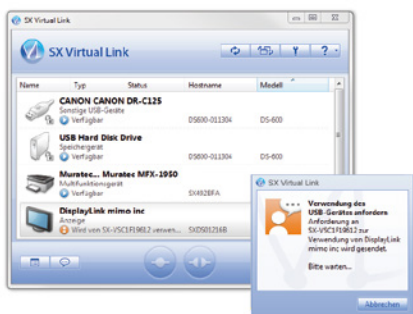
More and more USB devices such as scanners, multi-function printers (MFPs), hard disk drives, and cameras have been used in offices. The USB Device Server allows you to use these devices on a network, improving installation flexibility without troublesome USB cables. This also reduces installation costs by enabling USB devices to be easily shared in the office in a cost optimized manner.

#### What is a USB Device Server?

Using Silex Technology's USB Virtual Link (UVL) Technology, it enables USB devices on the network be available as if they are connected to a PC USB cable, allowing you to use not only the USB device drivers, but all application software as-is.

#### SX Virtual Link

SX Virtual Link (SVL) is application software for USB Virtual Link (UVL) Technology. Any networked USB devices connected to a USB Device Server can be remotely connected to a PC through USB by using SVL.

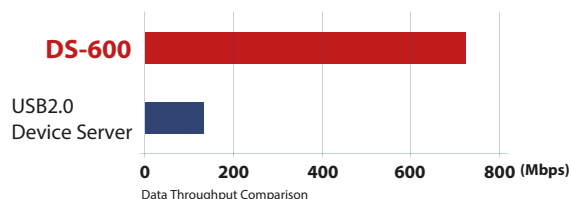


- You can remotely operate USB devices (connect, disconnect, etc.)
- You can send a disconnect request when the shared USB device is in use.

#### Features

##### High-speed support

USB3.0 SUPERSPEED is supported. DS-600 can transmit data faster than the preceding model. Even devices that handle large data such as scanners can transmit data quickly with USB3.0 and the DS-600, allowing you to improve work efficiency.



##### Robust Security

Enterprise network security requirements have increased in recent years. A number of new authentication methods are supported to prevent illegal access/intrusion to the internal network and for increased data secrecy and route encryption requirements.

DS-600 supports the following three enterprise network security features.

##### IEEE 802.1X authentication

DS-600 supports IEEE 802.1X authentication, and it can be used for a network environment, which requires enterprise authentication. Supported authentication: EAP-TLS, PEAP (PEAPv0), EAP-TTLS

##### Data encryption (AES256bit)

Data encryption is supported over network routes. It processes network transfer safely for data requiring high security.

##### USB connect password function

Password configuration is available for each USB port. DS-600 manages users, who can connect to a specific USB device.

##### Specialized features for USB devices

##### Isochronous Transfer mode

USB devices such as Webcams or USB speakers, which require consecutive and real-time data transmission, can also be used in a network environment. DS-600 supports both Full Speed and High Speed.

##### Standard TCP/IP printing (LPR/RAW)

DS-600 supports generally-used network printing protocols: "Raw mode printing" and "LPR printing". DS-600 can be available as a print server when it is connected to a printer.

##### NAS (Network Attached Storage) functions

Storages such as USB hard disk drives can be used as NAS. When storages with specific formats are simply connected to DS-600, they will be available as NAS in the network. Supported formats: FAT12, FAT16, FAT32

##### Simple configuration

Silex free software "Device Server Setup" (available at Silex web site) gives easy-setup. Users just need to answer questions on the screen and the configuration will be easily done.

##### ECO mode

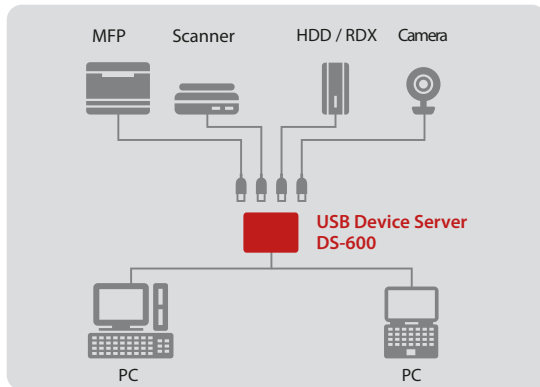
When DS-600 is not used for a certain period of time, the USB bus power feeding is turned off to save energy. It increases power-saving efficiency. The USB bus power feeding automatically restarts upon use.

##### USB-Hubs

DS-600 is compatible with USB-Hubs, allowing to increase the number of connectable USB devices.

## Assumed applicable devices for DS-600

- Document Scanner
- Printer, MFP, Copier
- USB Industrial Cameras
- Hard Disk / RDX-Drives
- USB-Sticks



If you are interested in a customized OEM version of this product, please contact the Silex Sales Team.

**SX UVL Client SDK for Win32**

**SX UVL Client SDK for iOS**

**SX UVL Client SDK for Android**

The Windows version (SX UVL Client SDK for Win32) is available at the Silex web site for free. Please contact our sales staff for others.

## Other USB Device Servers

**Basic model:  
USB 2.0 Device Server  
DS-510**



- 10BASE-T, 100BASE-TX, 1000BASE-T (Auto-recognition)
- USB2.0 (Type-A) x 2 ports
- Supports Isochronous transfer (High Speed, Full Speed)

## Specifications

|   |  |
|---|--|
| Part number:                                  | DS-600   |
| Network interface:                            | 10BASE-T/100BASE-TX/1000BASE-T (Auto-recognition)  |
| Wireless LAN                                  | N/A  |
| Device interface:                             | USB3.0 SuperSpeed (Typ A) x 1 port *1<br>USB2.0 Hi-Speed (Typ A) x 1 port  |
| Supported OS:                                 | Windows 10 (32/64bit), Windows 8/8.1 (32/64bit), Windows 7 (32/64bit), Windows Server 2012R2, Windows Server 2012, Windows Server 2008R2, Windows Server 2008 (32/64bit) |
| Supported protocol:                           | TCP/IP   |
| Configuration method:                         | Device Server Setup, Web-Browser   |
| Dimension:                                    | W:130mm x D:100mm x H:26.2mm   |
| Weight:                                       | 145g (without accessories)   |
| Storage temperature:<br>Storage humidity:     | -10 to 50°C<br>20 to 95% RH (without condensation)   |
| Operating temperature<br>Operating humidity : | 0 to 40°C<br>20 to 95%RH (without condensation)  |
| Max power consumption:                        | 4.8W (DC12V 0.4A) without USB bus power *2   |
| Regulatory compliance:                        | VCCI Class B / FCC Class B / CE Class B, Rohs Directives   |
| Supported utility:                            | SX Virtual Link Ver4.0.0 or later, ThinClient USB Link Controller Ver1.6.0 or later  |
| Enclosed accessories:                         | Main unit, AC adapter, Set-up guide, GPL inquiry sheet, Warranty   |

\*1 Supply currents of bus power are 900mA for USB3.0 and 500mA for USB2.0.

\*2 To operate a USB device that comes with an AC adapter, it is recommended to use the enclosed AC adapter for stable performance

## USB Device Server Function Comparison

| Device name                      | DS-600                                      | DS-510                            |
|----------------------------------|---|-----------------------------------|
| Device server function           | USB3.0/USB2.0                               | USB2.0                            |
| Isochronous transfer             | Supported (Full-Speed / Hi-Speed)           | Supported (Full-Speed / Hi-Speed) |
| Printer auto connection function | Supported                                   | Supported                         |
| IEEE 802.1X                      | Supported (EAP-TLS, PEAP(PEAPv0), EAP-TTLS) | Not supported                     |
| NAS function                     | Supported (FAT12, FAT16, FAT32)             | Not supported                     |
| Data encryption                  | Supported (AES-256)                         | Not supported                     |
| USB connect password             | Supported                                   | Not supported                     |
| Print server function            | Supported                                   | Supported                         |
| ECO mode function                | Supported                                   | Supported                         |

silex technology is a registered trademark of silex technology, Inc. Other product or brand names may be registered trademarks or trademarks of their respective owners. Technical information and specifications are subject to change without notice. © 2016 silex technology, Inc. All rights reserved.

## silex global sales & support locations



**USA Office**  
silex technology america, Inc.  
+1-801-747-0656  
U.S. toll free 866-765-8761  
www.silexamerica.com  
sales@silexamerica.com

**Europe**  
silex technology europe, GmbH  
+49-2151-65009-10  
Germany toll free 0800-7453938  
www.silexeurope.com  
contact@silexeurope.com

**Corporate Headquarters**  
silex technology, Inc.  
+81-774-98-3781  
www.silex.jp  
support@silex.jp



PN: 141-20140-100  
REV A. 20160621



**Стандарт  
Электрон  
Связь**

Мы молодая и активно развивающаяся компания в области поставок электронных компонентов. Мы поставляем электронные компоненты отечественного и импортного производства напрямую от производителей и с крупнейших складов мира.

Благодаря сотрудничеству с мировыми поставщиками мы осуществляем комплексные и плановые поставки широчайшего спектра электронных компонентов.

Собственная эффективная логистика и склад в обеспечивает надежную поставку продукции в точно указанные сроки по всей России.

Мы осуществляем техническую поддержку нашим клиентам и предпродажную проверку качества продукции. На все поставляемые продукты мы предоставляем гарантию .

Осуществляем поставки продукции под контролем ВП МО РФ на предприятия военно-промышленного комплекса России , а также работаем в рамках 275 ФЗ с открытием отдельных счетов в уполномоченном банке. Система менеджмента качества компании соответствует требованиям ГОСТ ISO 9001.

Минимальные сроки поставки, гибкие цены, неограниченный ассортимент и индивидуальный подход к клиентам являются основой для выстраивания долгосрочного и эффективного сотрудничества с предприятиями радиоэлектронной промышленности, предприятиями ВПК и научно-исследовательскими институтами России.

С нами вы становитесь еще успешнее!

**Наши контакты:**

**Телефон:** +7 812 627 14 35

**Электронная почта:** [sales@st-electron.ru](mailto:sales@st-electron.ru)

**Адрес:** 198099, Санкт-Петербург,  
Промышленная ул, дом № 19, литера Н,  
помещение 100-Н Офис 331