



**CL88031**  
**230 V<sub>AC</sub> Offline LED Driver**  
**Evaluation Board**  
**User's Guide**

---

**Note the following details of the code protection feature on Microchip devices:**

- Microchip products meet the specification contained in their particular Microchip Data Sheet.
- Microchip believes that its family of products is one of the most secure families of its kind on the market today, when used in the intended manner and under normal conditions.
- There are dishonest and possibly illegal methods used to breach the code protection feature. All of these methods, to our knowledge, require using the Microchip products in a manner outside the operating specifications contained in Microchip's Data Sheets. Most likely, the person doing so is engaged in theft of intellectual property.
- Microchip is willing to work with the customer who is concerned about the integrity of their code.
- Neither Microchip nor any other semiconductor manufacturer can guarantee the security of their code. Code protection does not mean that we are guaranteeing the product as "unbreakable."

Code protection is constantly evolving. We at Microchip are committed to continuously improving the code protection features of our products. Attempts to break Microchip's code protection feature may be a violation of the Digital Millennium Copyright Act. If such acts allow unauthorized access to your software or other copyrighted work, you may have a right to sue for relief under that Act.

---

Information contained in this publication regarding device applications and the like is provided only for your convenience and may be superseded by updates. It is your responsibility to ensure that your application meets with your specifications. MICROCHIP MAKES NO REPRESENTATIONS OR WARRANTIES OF ANY KIND WHETHER EXPRESS OR IMPLIED, WRITTEN OR ORAL, STATUTORY OR OTHERWISE, RELATED TO THE INFORMATION, INCLUDING BUT NOT LIMITED TO ITS CONDITION, QUALITY, PERFORMANCE, MERCHANTABILITY OR FITNESS FOR PURPOSE. Microchip disclaims all liability arising from this information and its use. Use of Microchip devices in life support and/or safety applications is entirely at the buyer's risk, and the buyer agrees to defend, indemnify and hold harmless Microchip from any and all damages, claims, suits, or expenses resulting from such use. No licenses are conveyed, implicitly or otherwise, under any Microchip intellectual property rights unless otherwise stated.

*Microchip received ISO/TS-16949:2009 certification for its worldwide headquarters, design and wafer fabrication facilities in Chandler and Tempe, Arizona; Gresham, Oregon and design centers in California and India. The Company's quality system processes and procedures are for its PIC® MCUs and dsPIC® DSCs, KEELOQ® code hopping devices, Serial EEPROMs, microperipherals, nonvolatile memory and analog products. In addition, Microchip's quality system for the design and manufacture of development systems is ISO 9001:2000 certified.*

**QUALITY MANAGEMENT SYSTEM  
CERTIFIED BY DNV  
= ISO/TS 16949 =**

**Trademarks**

The Microchip name and logo, the Microchip logo, AnyRate, AVR, AVR logo, AVR Freaks, BitCloud, chipKIT, chipKIT logo, CryptoMemory, CryptoRF, dsPIC, FlashFlex, flexPWR, Helder, JukeBlox, KeeLoq, Klear, LANCheck, LINK MD, maXStylus, maXTouch, MediaLB, megaAVR, MOST, MOST logo, MPLAB, OptoLyzer, PIC, picoPower, PICSTART, PIC32 logo, Prochip Designer, QTouch, SAM-BA, SpyNIC, SST, SST Logo, SuperFlash, tinyAVR, UNI/O, and XMEGA are registered trademarks of Microchip Technology Incorporated in the U.S.A. and other countries.

ClockWorks, The Embedded Control Solutions Company, EtherSynch, Hyper Speed Control, HyperLight Load, IntelliMOS, mTouch, Precision Edge, and Quiet-Wire are registered trademarks of Microchip Technology Incorporated in the U.S.A.

Adjacent Key Suppression, AKS, Analog-for-the-Digital Age, Any Capacitor, AnyIn, AnyOut, BodyCom, CodeGuard, CryptoAuthentication, CryptoAutomotive, CryptoCompanion, CryptoController, dsPICDEM, dsPICDEM.net, Dynamic Average Matching, DAM, ECAN, EtherGREEN, In-Circuit Serial Programming, ICSP, INICnet, Inter-Chip Connectivity, JitterBlocker, KlearNet, KlearNet logo, memBrain, Mindi, MiWi, motorBench, MPASM, MPF, MPLAB Certified logo, MPLIB, MPLINK, MultiTRAK, NetDetach, Omniscient Code Generation, PICDEM, PICDEM.net, PICKit, PICtail, PowerSmart, PureSilicon, QMatrix, REAL ICE, Ripple Blocker, SAM-ICE, Serial Quad I/O, SMART-I.S., SQI, SuperSwitcher, SuperSwitcher II, Total Endurance, TSHARC, USBCheck, VariSense, ViewSpan, WiperLock, Wireless DNA, and ZENA are trademarks of Microchip Technology Incorporated in the U.S.A. and other countries.

SQTP is a service mark of Microchip Technology Incorporated in the U.S.A.

Silicon Storage Technology is a registered trademark of Microchip Technology Inc. in other countries.

GestIC is a registered trademark of Microchip Technology Germany II GmbH & Co. KG, a subsidiary of Microchip Technology Inc., in other countries.

All other trademarks mentioned herein are property of their respective companies.

© 2018, Microchip Technology Incorporated, All Rights Reserved.  
ISBN: 978-1-5224-3373-6

## Table of Contents

|  |          |
|--|----------|
| <b>Preface .....</b>   | <b>5</b> |
| Introduction.....  | 5        |
| Document Layout .....  | 5        |
| Conventions Used in this Guide .....   | 6        |
| Recommended Reading.....   | 7        |
| The Microchip Website .....  | 7        |
| Customer Support .....   | 7        |
| Document Revision History .....  | 7        |
| <br><b>Chapter 1. Product Overview</b>   |          |
| 1.1 Introduction .....   | 9        |
| 1.2 CL88031 Overview .....   | 9        |
| 1.3 CL88031 Key Features .....   | 9        |
| 1.4 What is the CL88031 230 V <sub>AC</sub> Offline LED Driver<br>Evaluation Board (ADM00963)? ..... | 11       |
| 1.5 What the CL88031 230 V <sub>AC</sub> Offline LED Driver<br>Evaluation Board Kit Contains .....   | 13       |
| <br><b>Chapter 2. Installation and Operation</b>   |          |
| 2.1 Introduction .....   | 15       |
| 2.2 Getting Started .....  | 16       |
| 2.3 Setup Procedure .....  | 17       |
| 2.4 How Does the CL88031 230 V <sub>AC</sub> Offline LED Driver<br>Evaluation Board Set Work? .....  | 18       |
| 2.5 Board Testing .....  | 19       |
| <br><b>Appendix A. Schematic and Layouts</b>   |          |
| A.1 Introduction .....   | 21       |
| A.2 Board Schematic – ADM00963 .....   | 22       |
| A.3 Board Schematic – ADM00965 .....   | 23       |
| A.4 ADM00963 – Top Silk .....  | 23       |
| A.5 ADM00963 – Top Copper and Silk .....   | 24       |
| A.6 ADM00963 – Top Copper .....  | 25       |
| A.7 ADM00963 – Bottom Copper and Silk .....  | 26       |
| A.8 ADM00965 – Top Silk .....  | 27       |
| A.9 AMD00965 – Top Copper and Silk .....   | 27       |
| A.10 ADM00965 – Top Copper .....   | 28       |
| A.11 ADM00965 – Bottom Copper and Silk .....   | 28       |

# CL88031 230 V<sub>AC</sub> Offline LED Driver Evaluation Board User's Guide

---

**Appendix B. Bill of Materials (BOM) .....29**

**Appendix C. Plots and Waveforms**

    C.1 CL88031 230 V<sub>AC</sub> Offline LED Driver  
        Evaluation Board Typical Waveforms ..... 31

    C.2 CL88031 230 V<sub>AC</sub> Offline LED Driver  
        Evaluation Board Typical Measurements ..... 38

**Worldwide Sales and Service .....43**

---

## Preface

---

### NOTICE TO CUSTOMERS

All documentation becomes dated, and this manual is no exception. Microchip tools and documentation are constantly evolving to meet customer needs, so some actual dialogs and/or tool descriptions may differ from those in this document. Please refer to our website ([www.microchip.com](http://www.microchip.com)) to obtain the latest documentation available.

Documents are identified with a “DS” number. This number is located on the bottom of each page, in front of the page number. The numbering convention for the DS number is “DSXXXXXXA”, where “XXXXXXX” is the document number and “A” is the revision level of the document.

For the most up-to-date information on development tools, see the MPLAB® IDE online help. Select the Help menu, and then Topics to open a list of available online help files.

## INTRODUCTION

This chapter contains general information that will be useful to know before using the CL88031 230 V<sub>AC</sub> Offline LED Driver Evaluation Board. Items discussed in this chapter include:

- [Document Layout](#)
- [Conventions Used in this Guide](#)
- [Recommended Reading](#)
- [The Microchip Website](#)
- [Customer Support](#)
- [Document Revision History](#)

## DOCUMENT LAYOUT

This document describes how to use the CL88031 230 V<sub>AC</sub> Offline LED Driver Evaluation Board as a development tool. The manual layout is as follows:

- **Chapter 1. “Product Overview”** – Important information about the CL88031 230 V<sub>AC</sub> Offline LED Driver Evaluation Board.
- **Chapter 2. “Installation and Operation”** – Includes instructions on how to get started with the CL88031 230 V<sub>AC</sub> Offline LED Driver Evaluation Board and a detailed description of each function.
- **Appendix A. “Schematic and Layouts”** – Shows the schematic and layout diagrams for the CL88031 230 V<sub>AC</sub> Offline LED Driver Evaluation Board.
- **Appendix B. “Bill of Materials (BOM)”** – Lists the parts used to build the CL88031 230 V<sub>AC</sub> Offline LED Driver Evaluation Board.
- **Appendix C. “Plots and Waveforms”** – Describes the plots and waveforms for the CL88031 230 V<sub>AC</sub> Offline LED Driver Evaluation Board.

## CONVENTIONS USED IN THIS GUIDE

This manual uses the following documentation conventions:

### DOCUMENTATION CONVENTIONS

| Description                                      | Represents  | Examples  |
|--|---|---|
| <b>Arial font:</b>                               |   |   |
| Italic characters                                | Referenced books  | <i>MPLAB<sup>®</sup> IDE User's Guide</i>                   |
|  | Emphasized text   | ...is the <i>only</i> compiler...                           |
| Initial caps                                     | A window  | the Output window   |
|  | A dialog  | the Settings dialog   |
|  | A menu selection  | select Enable Programmer                                    |
| Quotes   | A field name in a window or dialog  | "Save project before build"                                 |
| Underlined, italic text with right angle bracket | A menu path   | <u><i>File&gt;Save</i></u>                                  |
| Bold characters                                  | A dialog button   | Click <b>OK</b>   |
|  | A tab   | Click the <b>Power</b> tab                                  |
| N'Rnnnn  | A number in verilog format, where N is the total number of digits, R is the radix and n is a digit. | 4'b0010, 2'hF1  |
| Text in angle brackets < >                       | A key on the keyboard   | Press <Enter>, <F1>   |
| <b>Courier New font:</b>                         |   |   |
| Plain Courier New                                | Sample source code  | #define START   |
|  | Filenames   | autoexec.bat  |
|  | File paths  | c:\mcc18\h  |
|  | Keywords  | _asm, _endasm, static                                       |
|  | Command-line options  | -Opa+, -Opa-  |
|  | Bit values  | 0, 1  |
|  | Constants   | 0xFF, 'A'   |
| Italic Courier New                               | A variable argument   | <i>file.o</i> , where <i>file</i> can be any valid filename |
| Square brackets [ ]                              | Optional arguments  | mcc18 [options] <i>file</i> [options]                       |
| Curly brackets and pipe character: {   }         | Choice of mutually exclusive arguments; an OR selection   | errorlevel {0 1}  |
| Ellipses...                                      | Replaces repeated text  | var_name [, var_name...]                                    |
|  | Represents code supplied by user  | void main (void)<br>{ ...<br>}                              |

## RECOMMENDED READING

This user's guide describes how to use the CL88031 230 V<sub>AC</sub> Offline LED Driver Evaluation Board. Another useful document is listed below. The following Microchip document is available and recommended as supplemental reference resource:

- **CL88030/1 Data Sheet - “Sequential Linear LED Driver with Four or Six Taps” (DS20006049)**

## THE MICROCHIP WEBSITE

Microchip provides online support via our website at [www.microchip.com](http://www.microchip.com). This website is used as a means to make files and information easily available to customers. Accessible by using your favorite Internet browser, the website contains the following information:

- **Product Support** – Data sheets and errata, application notes and sample programs, design resources, user's guides and hardware support documents, latest software releases and archived software
- **General Technical Support** – Frequently Asked Questions (FAQs), technical support requests, online discussion groups, Microchip consultant program member listing
- **Business of Microchip** – Product selector and ordering guides, latest Microchip press releases, listing of seminars and events, listings of Microchip sales offices, distributors and factory representatives

## CUSTOMER SUPPORT

Users of Microchip products can receive assistance through several channels:

- Distributor or Representative
- Local Sales Office
- Field Application Engineer (FAE)
- Technical Support

Customers should contact their distributor, representative or field application engineer (FAE) for support. Local sales offices are also available to help customers. A listing of sales offices and locations is included in the back of this document.

Technical support is available through the website at:  
<http://www.microchip.com/support>.

## DOCUMENT REVISION HISTORY

### Revision A (August 2018)

- Initial release of this document.

NOTES:

---

## Chapter 1. Product Overview

---

### 1.1 INTRODUCTION

This chapter provides an overview of the CL88031 230 V<sub>AC</sub> Offline LED Driver Evaluation Board and covers the following topics:

- [CL88031 Overview](#)
- [CL88031 Key Features](#)
- [What is the CL88031 230 V<sub>AC</sub> Offline LED Driver Evaluation Board \(ADM00963\)?](#)
- [What the CL88031 230 V<sub>AC</sub> Offline LED Driver Evaluation Board Kit Contains](#)

### 1.2 CL88031 OVERVIEW

The CL88031 driver Integrated Circuit (IC) is a sequential linear LED driver, 6-tap version, targeted to provide a flexible solution to drive LEDs from AC line voltages up to 277 V<sub>AC</sub> and at high-output powers.

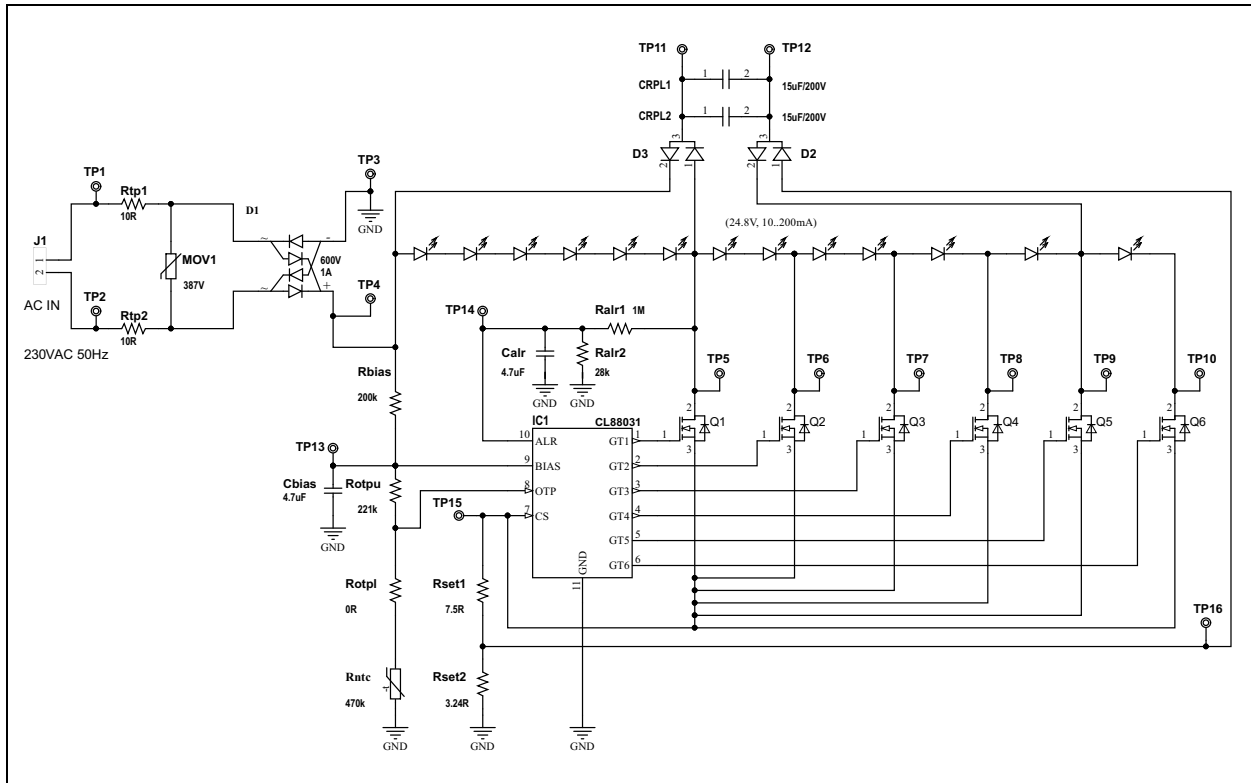
A sequential linear LED driver is an LED driver, operating from an AC voltage source and comprised of multiple linear current regulators driving various tap points along a long string of LEDs connected to the rectified AC. High efficiency is achieved by shutting off upstream regulators when downstream regulators achieve regulation.

The CL88031 is in a DFN-10 package. The power dissipation for this device is much lower than the CL8800 or CL88020 one, due to the external FETs. The bottom tab is not necessary for thermal reasons, but it is necessary to provide 13 electrical connections for the CL88031.

### 1.3 CL88031 KEY FEATURES

- Scalable:
  - AC line voltage limited only by external FETs
  - Output power limited only by external FETs
- No Inductors:
  - Reduces BOM cost and circuit complexity
- Efficient Operation:
  - Typical electrical efficiencies of 80% to 90% across the AC input voltage range
- No High Frequencies:
  - Inherently low-conducted EMI, no need for input filters
- Inherently Dimmer Compatible:
  - Works with most leading-edge and trailing-edge phase-cut dimmers
  - Requires no special circuitry to detect and to handle dimmers
  - May require an RC network across the AC line to provide adequate TRIAC latching current
- Six Tap Version:
  - Higher taps increase efficiency and lower Total Harmonic Distortion (THD) (the CL88031 case)
  - Fewer taps reduce costs (the CL88030 case)

- Reduced Output Ripple (Optional):
  - An external capacitor with four diodes provides lower output ripple
  - Strobging occurs at low line
  - Provides continuous power to the driver
- Active Line Regulation:
  - Active circuitry provides better regulated output power over variations in AC line voltage
  - -12%/+0% line regulation typical
  - Prevents driver from overheating at high AC line voltages
  - Prevents excessive currents at low line
  - Required for reasonable line regulation and efficient operation, given only four or six taps
  - If unused, the ALR pin is left "open" in the application
- Overtemperature Protection (OTP), Optional:
  - An inexpensive external NTC thermistor provides remote temperature sensing. The thermistor may be near the LEDs to provide nearly direct monitoring of LED temperature.
  - OTP is linear (no on/off cycling)
  - A widely available, 470 k $\Omega$  NTC provides an 85°C maximum temperature
  - Temperature adjustable via selection of NTC thermistor resistance
  - If unused, the OTP pin is tied to BIAS
- Two Current-Setting Resistors:
  - Different hold-up and direct AC currents lower the THD and output ripple
  - Tap current ratios internally set
  - Reduces component count
  - Fewer pins
  - Simplifies application design
  - Single-point current control for reduced EMI



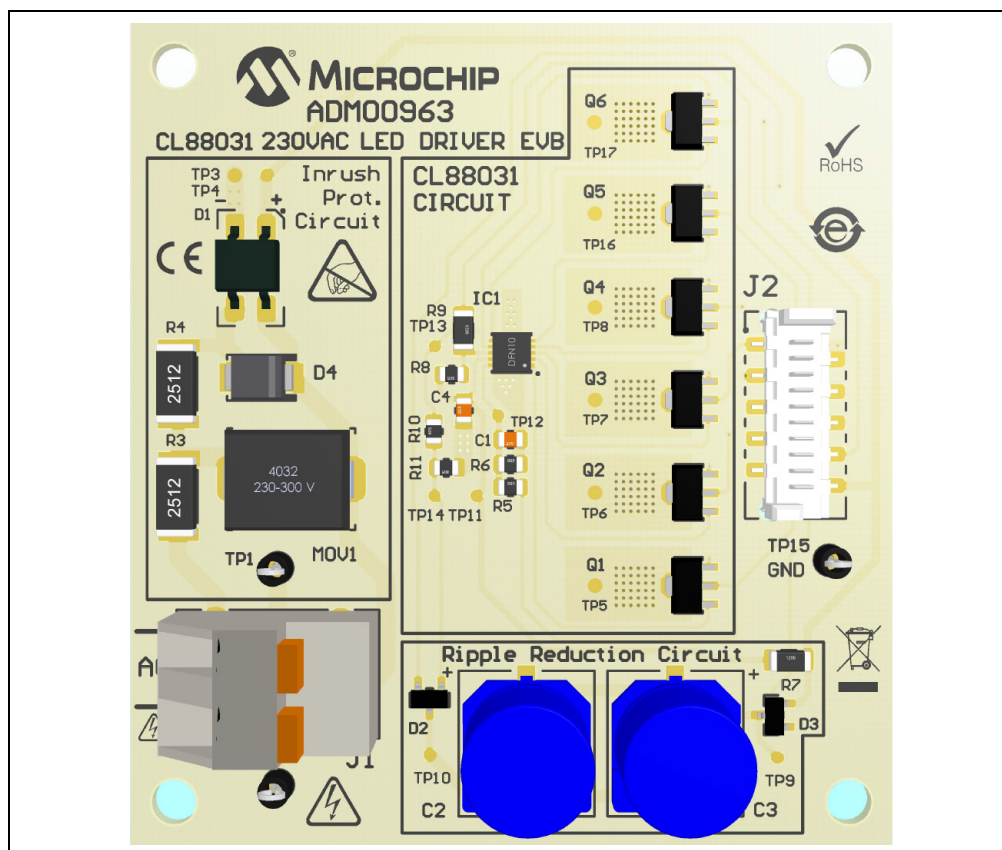
**FIGURE 1-1:** Typical CL88031 230 V<sub>AC</sub> Offline LED Driver Evaluation Board Circuit.

## 1.4 WHAT IS THE CL88031 230 V<sub>AC</sub> OFFLINE LED DRIVER EVALUATION BOARD (ADM00963)?

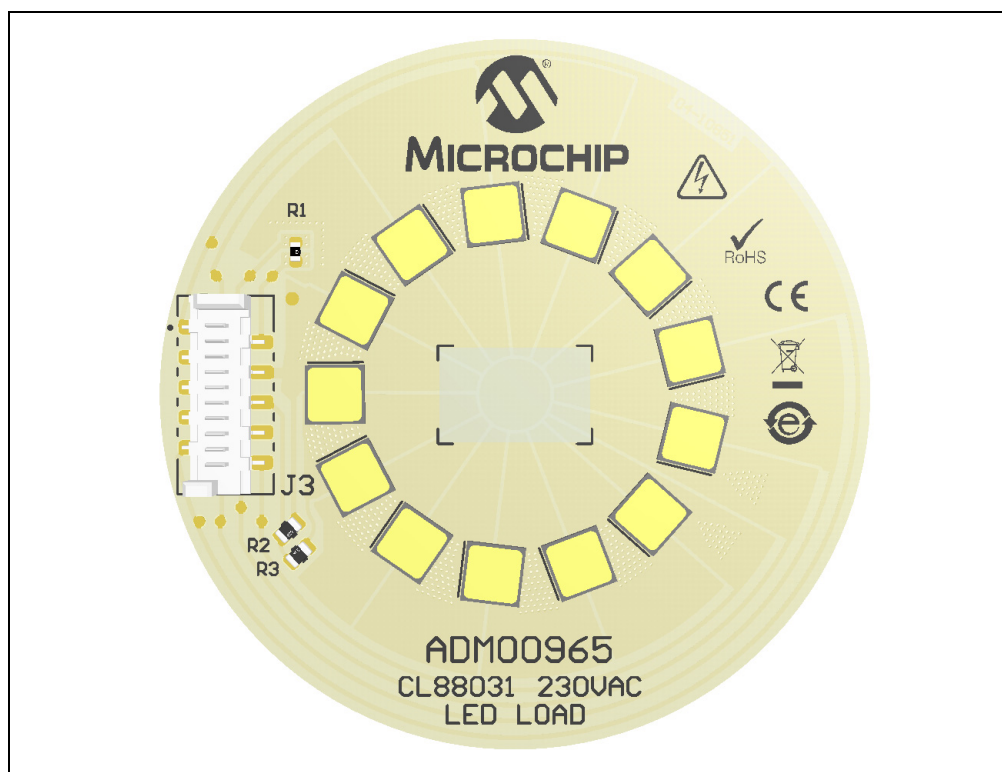
The CL88031 230 V<sub>AC</sub> Offline LED Driver Evaluation Board (ADM00963) and a designated LED Load Board (ADM00965) represent a complete solution for a LED lighting application, powered directly from the 230 V<sub>AC</sub> line and based on the Microchip Technology's CL88031 sequential linear LED driver. The application achieves efficient operation without magnetics or conventional switching techniques and is a flexible solution that allows users to design and test their own LED Load. The available LED Load is made with 13 LEDs. Since no high frequencies are present, it exhibits inherently low conducted and radiated EMI without the need of input filters or shielding. Because the current through the LEDs follows the AC input voltage, Power Factor Correction (PFC) circuitry is not needed. With the addition of an RC network, the CL88031 is compatible with both leading-edge and trailing-edge dimmers.

**Note:** The LED Load (ADM00965) is provided on a double-layer 60 mm diameter FR4 (0.6 mm thick) PCB, ready to be mounted on a pin-fin heat sink. The kit includes a black anodized pin-fin heat sink and a double-sided adhesive thermal tape necessary to mount the LED Load on it. The LED Load includes an NTC thermistor, making Overtemperature Protection (OTP) possible. The LED Driver PCB (ADM00963) is made on a 1.6 mm standard double-layer FR4. The kit includes a 10-wire flat cable to connect the LED Driver Board to the LED Load board.

All circuitry and hardware are provided, along with transient protection and OTP. Plug into a 230 V<sub>AC</sub> outlet (50 Hz or 60 Hz) to get started.



**FIGURE 1-2:** CL88031 230 V<sub>AC</sub> Offline LED Driver Evaluation Board (ADM00963) – Top View.



**FIGURE 1-3:** CL88031 LED Load Board (ADM00965) – Top View.

### 1.5 WHAT THE CL88031 230 V<sub>AC</sub> OFFLINE LED DRIVER EVALUATION BOARD KIT CONTAINS

The CL88031 230 V<sub>AC</sub> Offline LED Driver Evaluation Board kit includes:

- CL88031 230 V<sub>AC</sub> Offline LED Driver Evaluation Board (ADM00963)
- 10-wire interconnection flat cable
- 4 nylon stand-offs with corresponding screws
- Important Information Sheet

**Note:** The CL88031 LED Load Board (ADM00965) is available for purchase from [www.microchipdirect.com](http://www.microchipdirect.com). The CL88031 LED Load Board kit includes:

- CL88031 LED Load Board (ADM00965)
- LED Load pin-fin heat sink
- Thermal double-sided adhesive tape
- Important Information Sheet

NOTES:

---

## Chapter 2. Installation and Operation

---

### 2.1 INTRODUCTION

The CL88031 230 V<sub>AC</sub> Offline LED Driver Evaluation Board is designed to drive a long string of inexpensive, low-current LEDs directly from the AC mains. A basic driver circuit consists of the CL88031, six resistors, six FETs and a bridge rectifier. Two to four additional components are optional for various levels of transient protection, also with a low-price NTC to assure remote OTP. No capacitors, EMI filters or power factor correction circuits are needed.

The operation principle is identical to the CL88020, the difference being the output FETs are outside the IC, and so the power capability of the application is higher and the input/output capability is also higher. A string of series/parallel LEDs is tapped at six locations. Six linear current regulators sink current at each tap through a single control point and are sequentially turned on and off. High efficiency is achieved by shutting off upstream regulators when downstream regulators achieve regulation. This makes controlling overall input current easier than trying to control multiple current paths, thereby tracking the input sine wave voltage. Voltage across each regulator is minimized when conducting, providing high efficiency. It implements a self-commutation technique using only the tap currents. This technique inherently provides smooth transitions from one regulator to the next, without relying on tap voltages or the rectified AC to coordinate the transitions. The current waveform can be tailored to optimize for input voltage range, active line/load regulation, output power/current, efficiency, power factor, THD, dimmer compatibility and LED utilization. With the addition of a resistor-capacitor (RC) network, the driver is compatible with a wider range of phase-cut dimmers.

#### 2.1.1 Board Features

The CL88031 230 V<sub>AC</sub> Offline LED Driver Evaluation Board (ADM00963) has the following features:

- Input Voltage: 230 V<sub>rms</sub> +/-15%, 50/60 Hz
- Typical Output Capability: up to 130 mA
- Efficiency: over 80%
- Maximum Output Power: 15W (it depends on the cooling provided)

The CL88031 LED Load Board (ADM00965) has the following features:

- 13 Osram Duris® S8 family LEDs (GW P9LR31.EM) grouped in six taps
- A 10-wire flat cable input connector
- One NTC for OTP

## 2.2 GETTING STARTED

The CL88031 230 V<sub>AC</sub> Offline LED Driver Evaluation Board is fully tested to evaluate and demonstrate the CL88031 LED Driver.

### WARNING

**The ADM00963 Source Board and ADM00965 LED Load Board do NOT provide electrical isolation between the AC line and the lamp circuitry. Dangerous voltages are present when connected to the AC line. Exercise caution!**

Consider the following recommendations before starting the setup process:

- Place the CL88031 LED Driver Evaluation Board and the LED Load assembly on a non-conductive surface when connected to the AC line.
- Do not come into contact with any of the two demonstration unit boards while they are connected to the AC line.
- Disconnect the demonstration units from the AC line before performing any work on any of them.
- Do not connect instruments having earth-referenced inputs, such as most oscilloscopes.
- It is suggested that utility power for testing is provided from an AC source with a floating output, and that differential voltage probes are used.

Failure to adhere to these guidelines may result in damage to the demo unit, the test instruments, and/or can put in danger the person conducting the tests.

### 2.2.1 Prerequisites

Since the power of the application is about 15 watts, for a continuous operation of the LED Load (more than 30s), attach the provided heat sink using the double-sided adhesive thermal tape by following these steps:

1. Before you start, make sure that the surface of the heat sink and of the PCB are dry and clean (use cotton made smooth material to clean if needed).
2. Detach the protection foil on the thermal tape from one side.
3. Attach the open portion of the thermal tape to the base of the heat sink.
4. Detach the second protection foil from the thermal tape.
5. Attach the PCB (ADM00965) to the heat sink.
6. Slowly press the top of the PCB to be sure that the thermal contact will be made all over the board.

## 2.3 SETUP PROCEDURE

Powering the CL88031 230 V<sub>AC</sub> Offline LED Driver Evaluation Board is easy. The only connections to be made are from the LED Driver Board to the LED Load assembled on a pin-fin heat sink, using the provided 10-wire flat cable, and from the LED Driver Board to the AC line via the power cord.

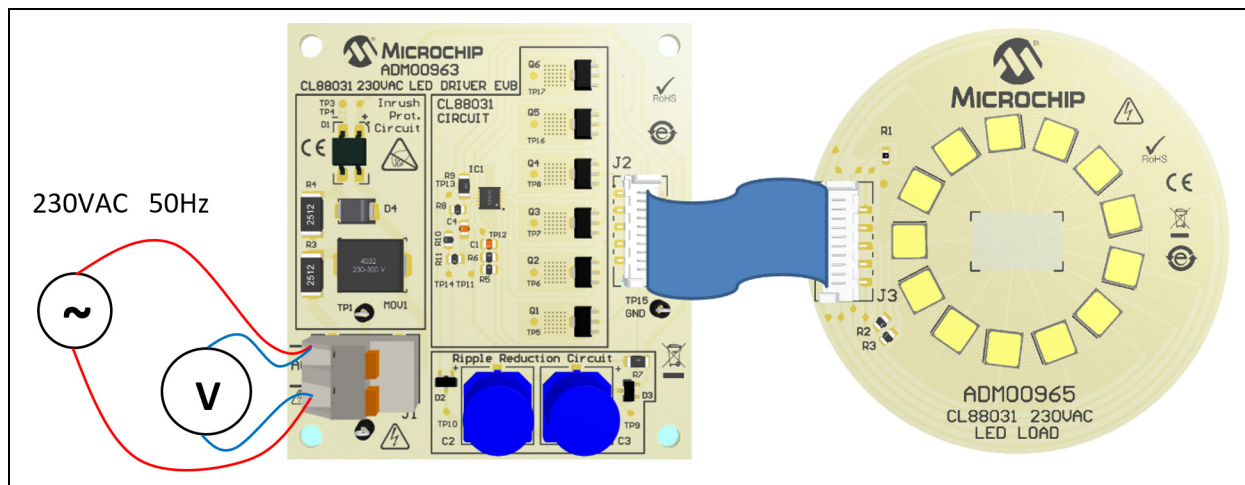
Follow these steps:

1. Read the above recommendations and precautions.
2. Connect the CL88031 LED Driver Evaluation Board and the CL88031 LED Load Board by means of the provided 10-wire flat cable, between J2 and J3 connectors. It is recommended to exercise caution, as the connectors on the flat cable are protected from incorrect connection.
3. Connect the power cord to J1 on the LED Driver Board. The input connector J1 is placed on the left side of the LED Driver board, which is marked with the inscription: AC.
4. Use a colored plexiglass above the LED Load Board for eyes protection against extreme light.
5. Plug the power cord into a 230 V<sub>AC</sub> outlet and apply 230 V<sub>AC</sub>  $\pm$ 15%, 50 Hz. While it is possible for the values to be below this range, it is recommended not to exceed 277 V<sub>AC</sub>. In this case, the Transient Protection feature is automatically activated. Line frequency is not critical (50 Hz or 60 Hz).

A variable AC power supply is needed for testing and evaluation in the laboratory. The power supply requires an output capability of at least 20W and a voltage range from 0 V<sub>AC</sub> to 300 V<sub>AC</sub>. This can also be obtained from an autotransformer supplied from the mains or an electronic AC/AC power supply (for example, the Chroma ATE Inc. 61500 series).

**Note:** Auto-transformers do not provide isolation from the utility mains.

Figure 2-1 illustrates the connection between ADM00963 and ADM00965.



**FIGURE 2-1:** Connection Diagram.

## 2.4 HOW DOES THE CL88031 230 V<sub>AC</sub> OFFLINE LED DRIVER EVALUATION BOARD SET WORK?

The CL88031 230 V<sub>AC</sub> Offline LED Driver Evaluation Board set is designed to control the current through the six LED taps while maintaining a high-input Power Factor (PF) and low THD. The ADM00963 includes a CL88031 IC, which is a sequential linear LED driver controlling six taps. Tap sequencing assures the regulators are turned on and off at the proper times. Tap sequencing also controls the smooth transition from one regulator to the next, without generating EMI-causing glitches in input current. Two concepts are involved:

- The first is a single-point control. All tap currents pass through a single control point. This makes controlling overall input current easier than trying to control multiple current paths.
- The second concept is called self-commutation. Using only the tap currents themselves, this technique inherently provides smooth transitions from one regulator to the next without relying on tap voltages or the rectified AC to coordinate the transitions. This avoids having to monitor high voltages and is more precise.

These two concepts work together to properly sequence the current regulators and to provide glitch-free operation and thus avoiding conducted EMI.

The CL88031 230 V<sub>AC</sub> Offline LED Driver Evaluation Board contains all the circuitry necessary to perform, as well as OTP, Active Line Regulation (ALR) and Ripple Reduction.

The OTP operates linearly, gradually reducing the output power as temperature increases. To accomplish this, it uses an inexpensive, external NTC thermistor to remotely sense LED temperature. The thermistor is located on the LED Load Board, ADM00965, in close proximity to the LEDs, providing near-direct LED temperature monitoring. The OTP temperature is adjustable via selection of the NTC resistance.

The ALR circuit maintains fairly constant output power over variations in AC line voltage. It is not a closed loop system that directly monitors and corrects output power. Instead, it monitors the average voltage applied to the LED string and uses it to adjust the reference voltage provided to the tap current regulators.

The Ripple Reduction Circuit (RRC) providing low output ripple is achieved using a capacitor and four diodes. The capacitor may consist of one or more paralleled ceramic capacitors or electrolytic. The CL88031 with RRC operates in four phases: recharge, hold-up, direct, and under certain conditions, idle. All active current paths include Segment 1 (TAP1), assuring uninterrupted light output on it during all phases of operation, excluding the idle. This reduces overall ripple, which means about 0.15 flicker index.

For more information, see the CL88020 data sheet.

## 2.5 BOARD TESTING

To start testing the evaluation board, follow these steps:

1. Connect the input AC source and the output LED Load, as shown in [Figure 2-1](#).
2. Use an eye protection filter to check that all the six taps light up on the LED Load Board.
3. Power the board at 230 V<sub>AC</sub>, 50 Hz-60 Hz.
4. Verify each tap current through the LEDs. It should be within a range of 65 mA and 134 mA. It can be measured by separating each wire from the inter-connection 10-wire flat cable between the CL88031 LED Driver Board and the CL88031 LED Load Board.
5. If a variable AC source is available, set the input voltage to any value between 180 V<sub>AC</sub> and 255 V<sub>AC</sub>. The LED Load delivers nearly constant lumen power. The application delivers between 10W and 14W electric output power.
6. Power-down the AC source.

NOTES:

---

## Appendix A. Schematic and Layouts

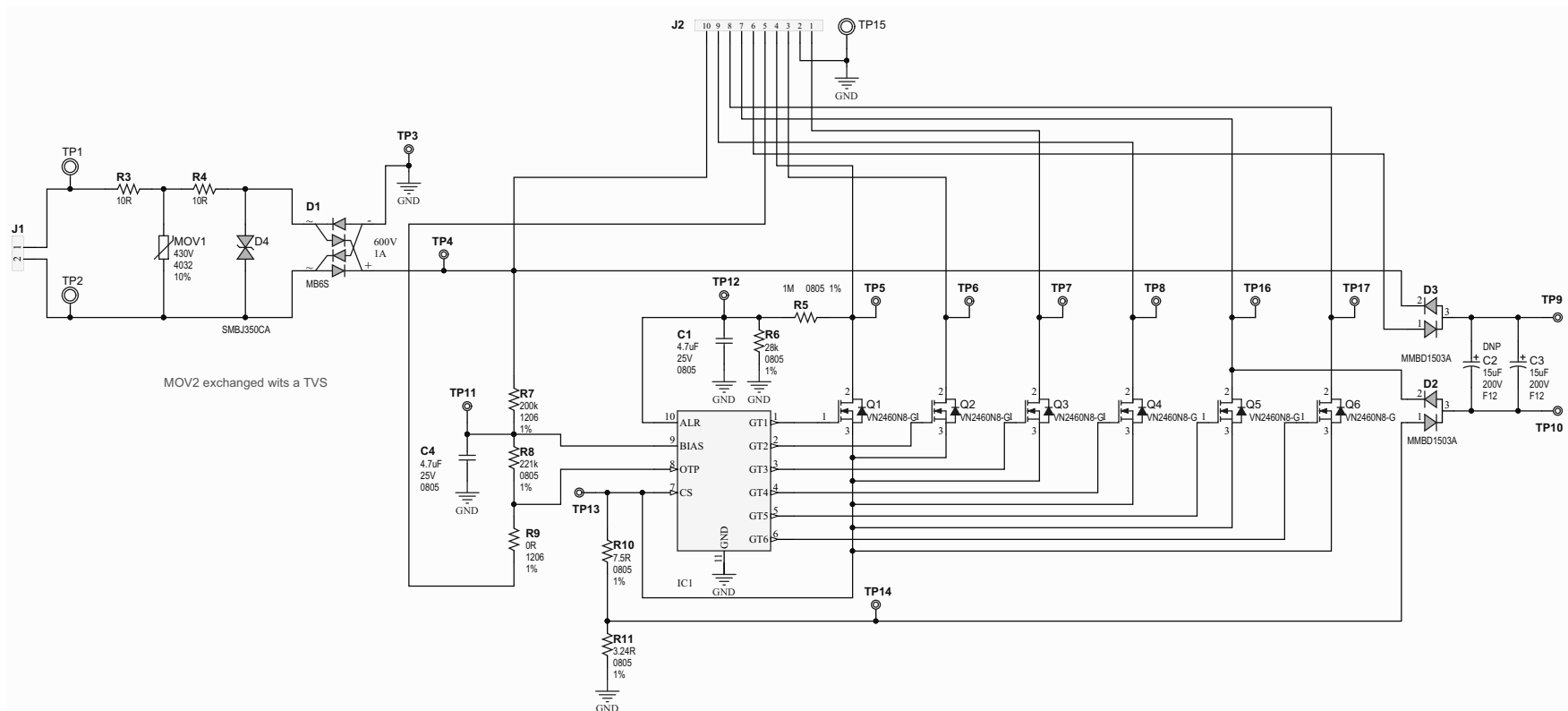
---

### A.1 INTRODUCTION

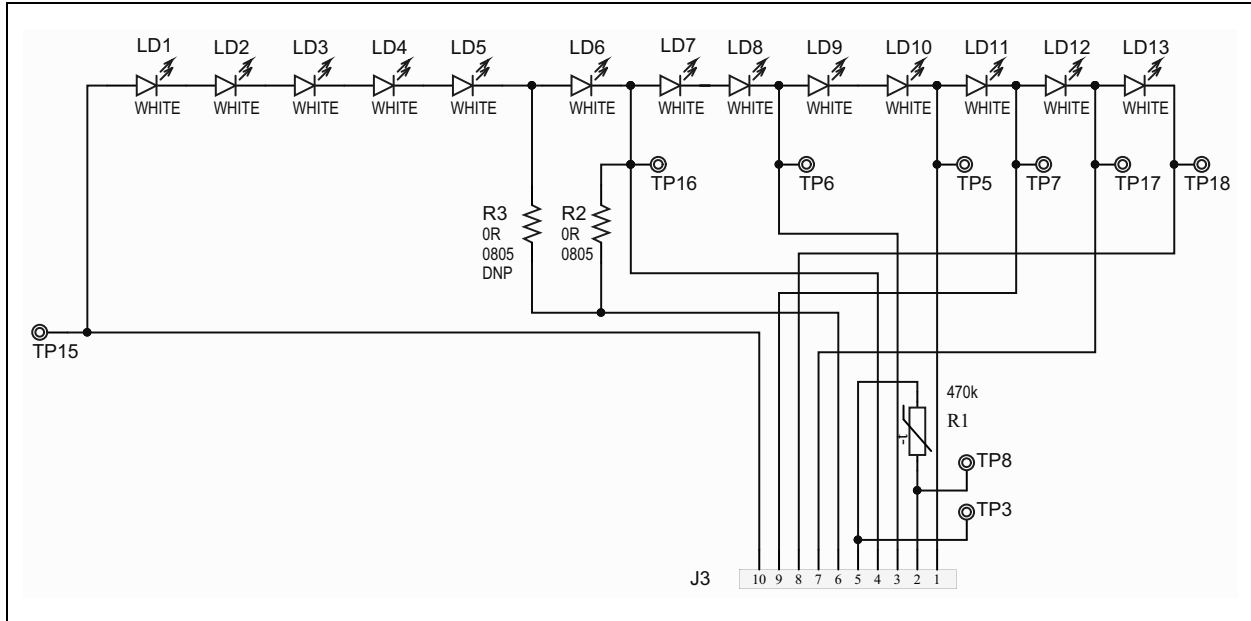
This appendix contains the following schematics and layouts for the CL88031 230 V<sub>AC</sub> Offline LED Driver Evaluation Board (ADM00963) and for the CL88031 230 V<sub>AC</sub> LED Load Board (ADM00965):

- [Board Schematic – ADM00963](#)
- [Board Schematic – ADM00965](#)
- ADM00963:
  - [ADM00963 – Top Silk](#)
  - [ADM00963 – Top Copper and Silk](#)
  - [ADM00963 – Top Copper](#)
  - [ADM00963 – Bottom Copper and Silk](#)
- ADM00965:
  - [ADM00965 – Top Silk](#)
  - [AMD00965 – Top Copper and Silk](#)
  - [ADM00965 – Top Copper](#)
  - [ADM00965 – Bottom Copper and Silk](#)

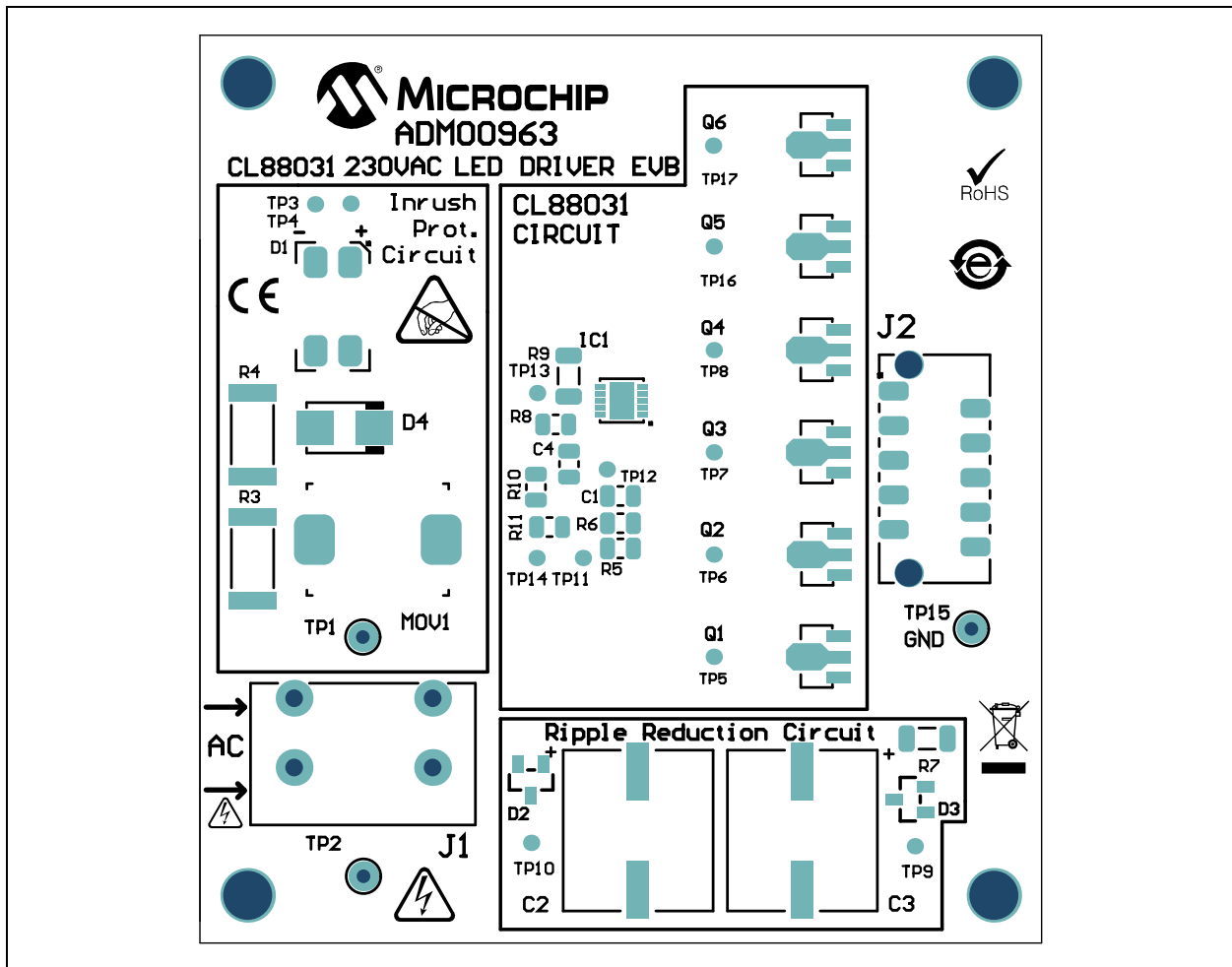
© 2018 Microchip Technology Inc.



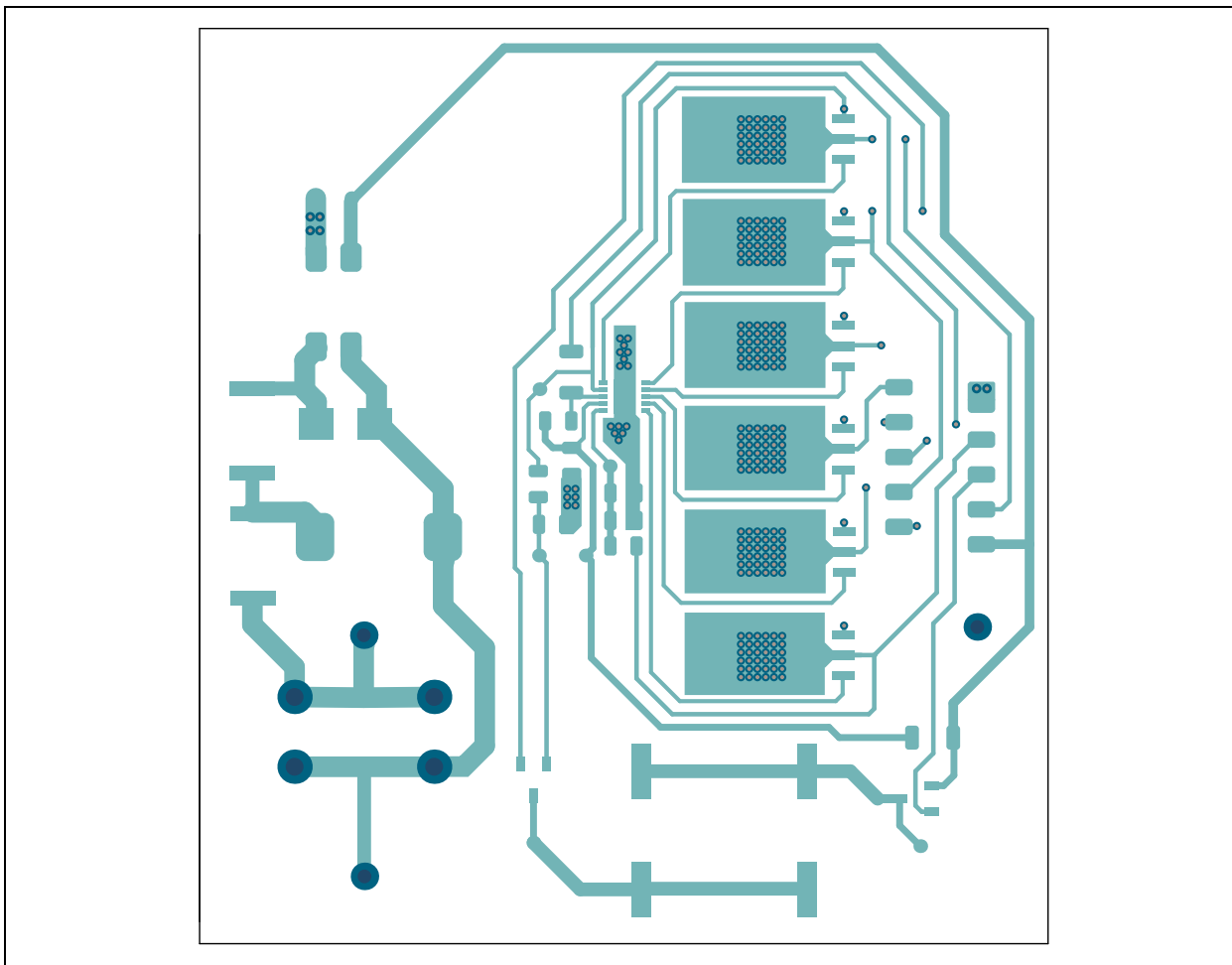
## A.3 BOARD SCHEMATIC – ADM00965



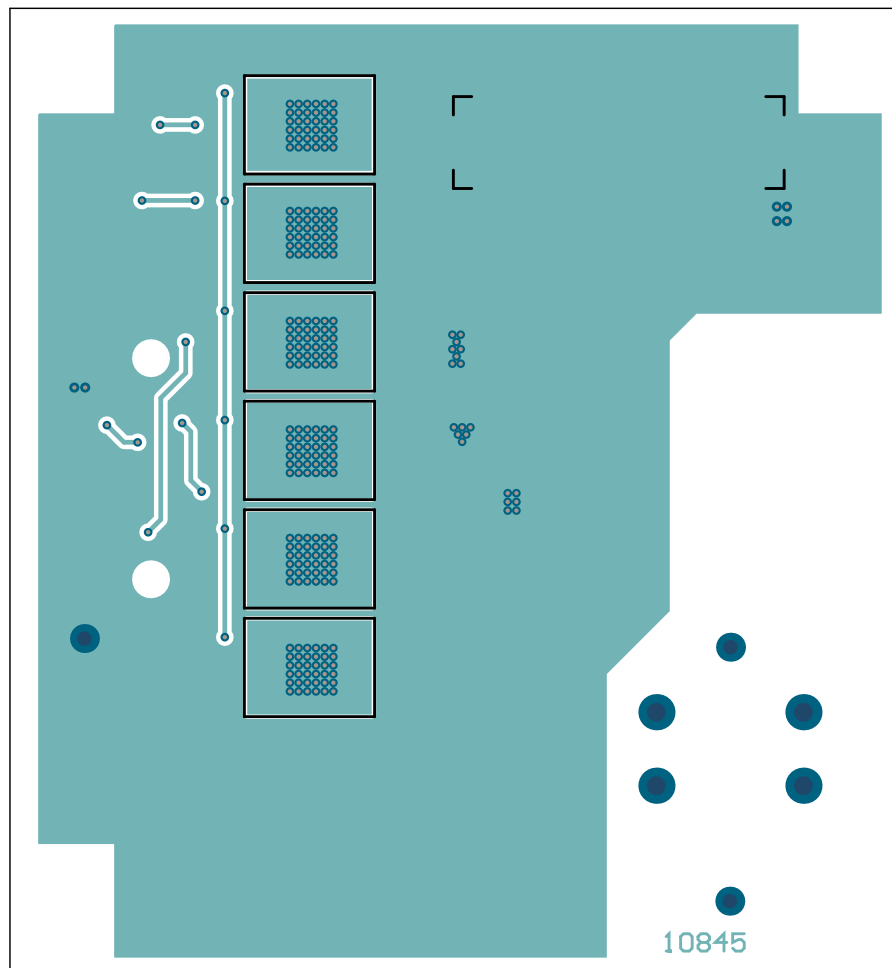
## A.4 ADM00963 – TOP SILK



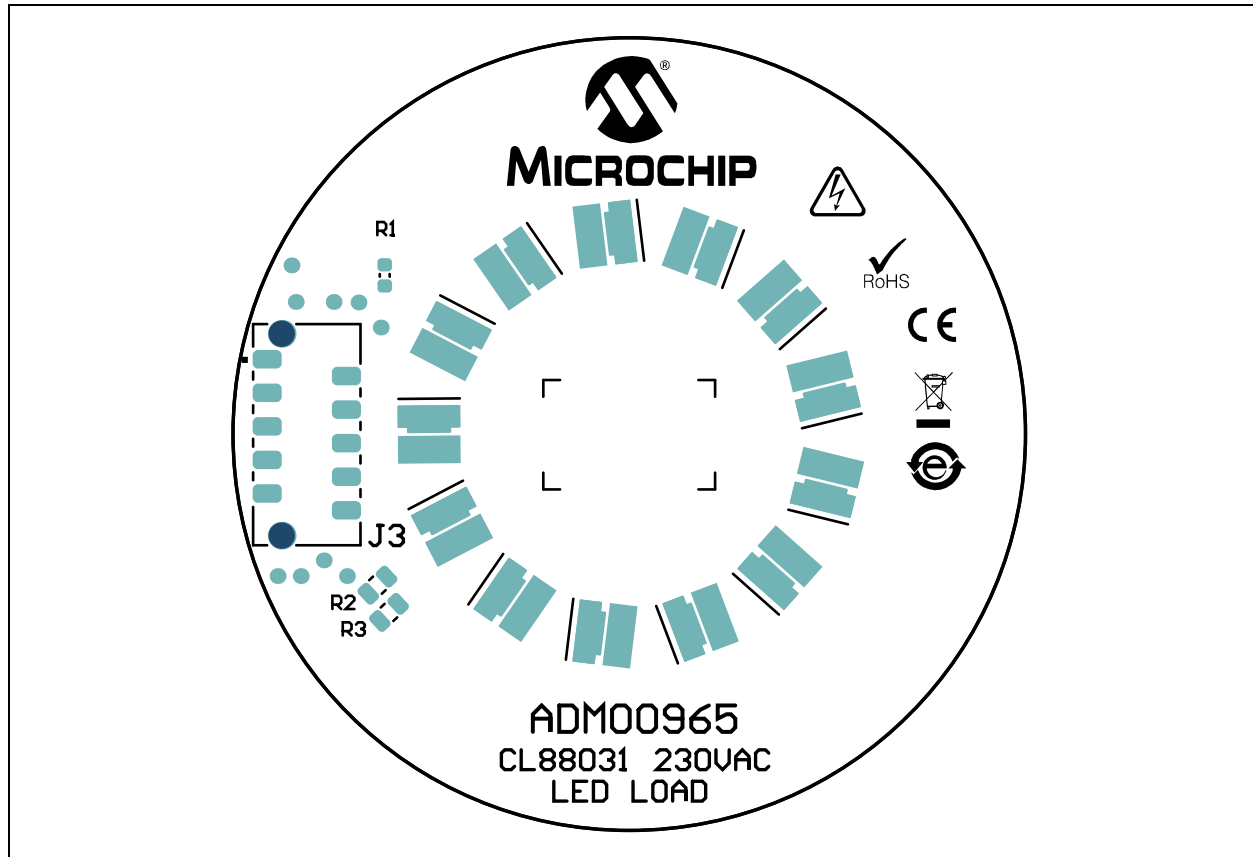


**A.6 ADM00963 – TOP COPPER**

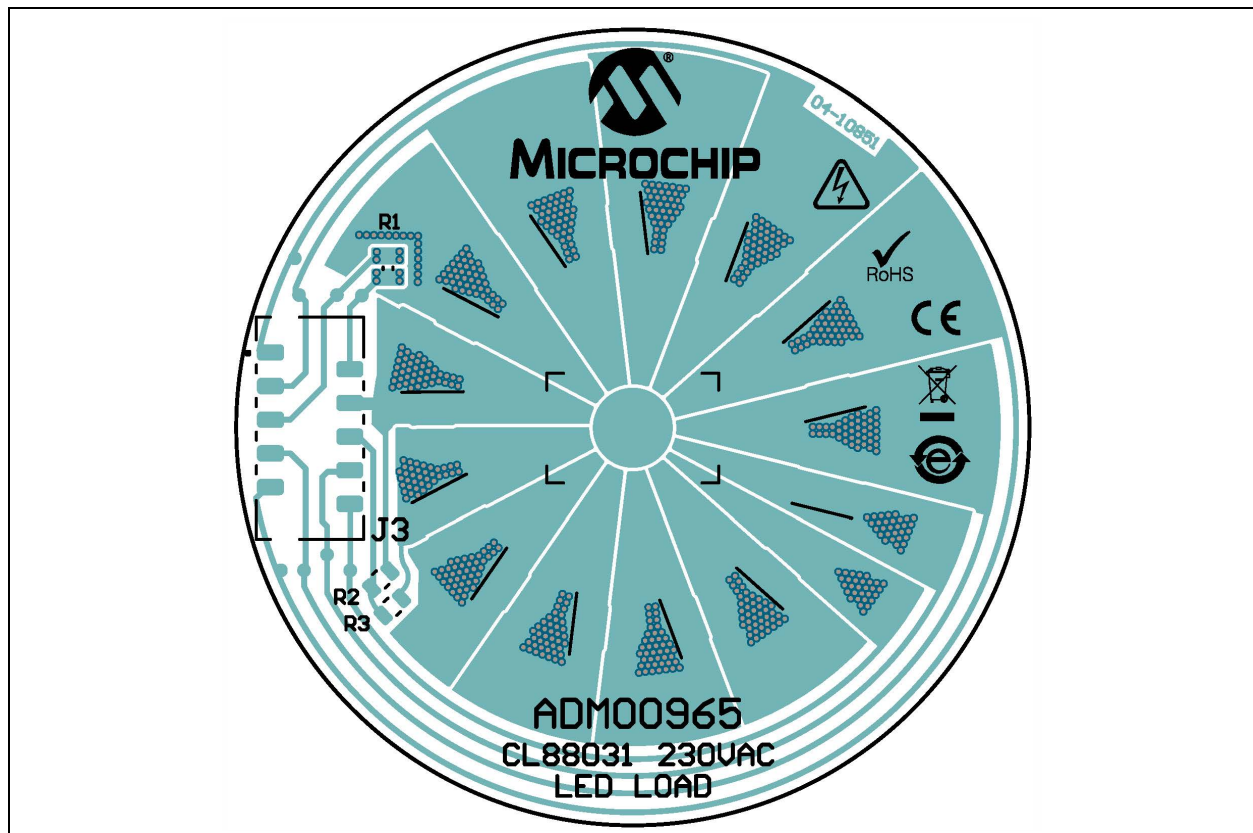
## A.7 ADM00963 – BOTTOM COPPER AND SILK



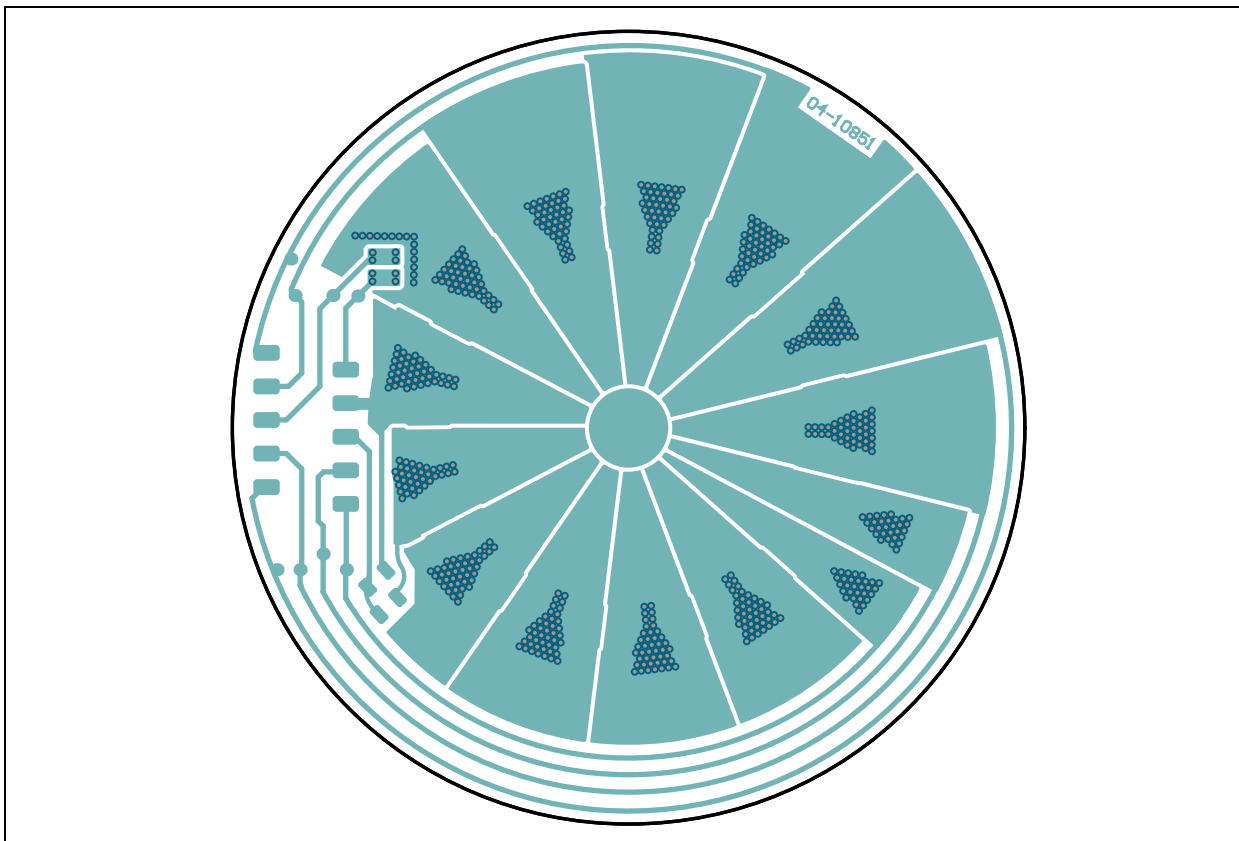
## A.8 ADM00965 – TOP SILK



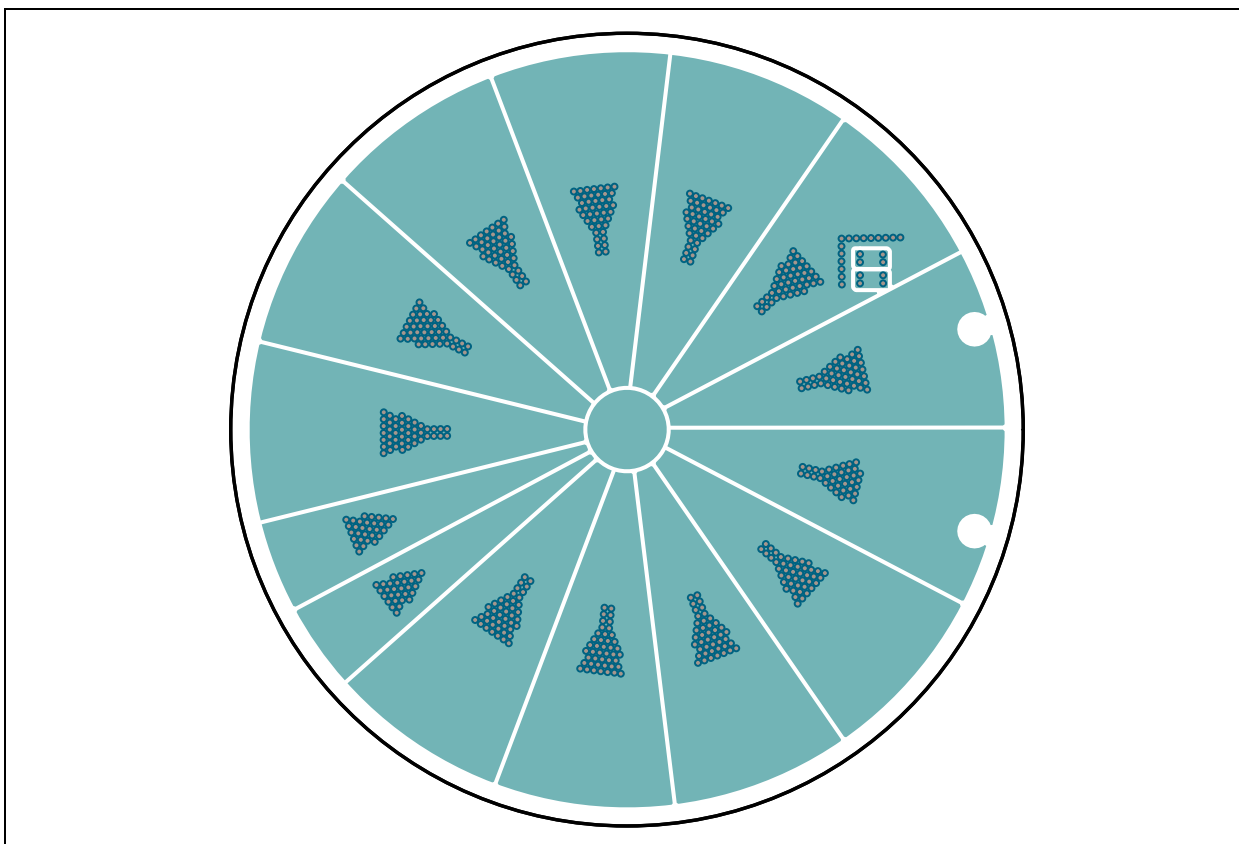
## A.9 AMD00965 – TOP COPPER AND SILK



## A.10 ADM00965 – TOP COPPER



## A.11 ADM00965 – BOTTOM COPPER AND SILK



## Appendix B. Bill of Materials (BOM)

**TABLE B-1: BILL OF MATERIALS (BOM) FOR ADM00963**

| Qty. | Reference              | Description   | Manufacturer               | Part Number          |
|------|------------------------|---|----------------------------|----------------------|
| 2    | C1, C4                 | Capacitor Ceramic, 4.7 $\mu$ F, 25V, 10%, X7R, SMD 0805                                 | TDK Corporation            | C2012X7R1E475K125AB  |
| 1    | C2                     | <b>DO NOT POPULATE</b>  | Nichicon Corporation       | ULV2E150MNL1GS       |
| 1    | C3                     | Capacitor Aluminium, 15 $\mu$ F, 250V, 20%, SMD F12                                     | Nichicon Corporation       | ULV2E150MNL1GS       |
| 1    | D1                     | Diode, Bridge Rectifier, MB6S, 1V, 0.5A, 600V, SMD, SOIC-4                              | Fairchild Semiconductor®   | MB6S                 |
| 2    | D2, D3                 | Diode Array, MMBD1503A, 1.1V, 200 mA, 200V, SMD, SOT-23-3                               | Fairchild Semiconductor    | MMBD1503A            |
| 1    | D4                     | Diode TVS, SMBJ350CA, 350V, 600W, SMD DO-214AA_SMB                                      | Littelfuse®                | SMBJ350CA            |
| 1    | IC1                    | 6 TAP Sequential Linear LED Driver  | Microchip Technology Inc.  | <b>CL88031T-E/MF</b> |
| 1    | J1                     | Terminal Block, 5.08 mm, 1x2, Female, 16-22AWG, 12A, TH, R/A                            | On-Shore Technology, Inc.  | OSTHD020080          |
| 1    | J2                     | Connector Header-1.27 Male, 1x10, Tin, SMD Vertical                                     | Digi-Key® Electronics      | WM19277-ND           |
| 1    | MOV1                   | Resistor Varistor, 430V, 250 mW, SMD 4032   | EPCOS TDK                  | B72660M0271K072      |
| 1    | PCB                    | CL88031 230 V <sub>AC</sub> Offline LED Driver Evaluation Board – Printed Circuit Board | Microchip Technology Inc.  | <b>04-10845-R2</b>   |
| 6    | Q1, Q2, Q3, Q4, Q5, Q6 | Transistor FET, N-Channel, 600V, 200 mA, 1.6W, SOT-89                                   | Microchip Technology Inc.  | <b>VN2460N8-G</b>    |
| 2    | R3, R4                 | Resistor, TKF, 10R, 5%, 1W, SMD 2512  | Panasonic® – ECG           | ERJ-1TYJ100U         |
| 1    | R5                     | Resistor, TKF, 1M, 1%, 1/8W, SMD 0805   | Panasonic – ECG            | ERJ-6ENF1004V        |
| 1    | R6                     | Resistor, TKF, 28k, 1%, 1/8W, SMD 0805  | Vishay/Dale                | CRCW080528K0FKEA     |
| 1    | R7                     | Resistor, TKF, 200k, 1%, 1/4W, SMD 0206   | Vishay/Dale                | CRCW1206200KFKEA     |
| 1    | R8                     | Resistor, TKF, 221k, 1%, 1/8W, SMD 0805   | Vishay/Dale                | CRCW0805221KFKEA     |
| 1    | R9                     | Resistor, TKF, 0R, 1%, 1/4W, SMD 1206   | TT Electronics Plc.        | WCR1206-R005JI       |
| 1    | R10                    | Resistor, TKF, 7.5R, 1%, 1/8W, SMD 0805   | Vishay/Dale                | CRCW08057R50FKEA     |
| 1    | R11                    | Resistor, TKF, 3.24R, 1%, 1/8W, SMD 0805  | Vishay/Dale                | CRCW08053R24FKEA     |
| 3    | TP1, TP2, TP15         | Miscellaneous, Test Points, Multi-Purpose, Miniature, Black                             | Keystone Electronics Corp. | 5001                 |

**Note 1:** The components listed in this Bill of Materials are representative of the PCB assembly. The released BOM used in manufacturing uses all RoHS-compliant components.

# CL88031 230 V<sub>AC</sub> Offline LED Driver Evaluation Board User's Guide

**TABLE B-2: BILL OF MATERIALS (BOM) FOR ADM00963 - MECHANICAL PARTS**

| Qty | Reference                                  | Description  | Manufacturer               | Part Number         |
|-----|--|--|----------------------------|---------------------|
| 1   | CBL1                                       | Mechanical HW Cable, Picoflex, IDT to IDT, 10-COND, 250 mm                 | Molex®                     | 0923151025          |
| 6   | HS1, HS2, HS3, HS4, HS5, HS6               | Mechanical HW Heat Sink, L8.5 mm x W6.35 mm x H4.8 mm, Black               | Assmann Electronics Inc.   | V5618A              |
| 1   | LABEL1                                     | Label Assembly, W/REV Level (Small Modules), PER MTS-0002                  |                            |                     |
| 4   | SCR1, SCR2, SCR3, SCR4                     | Mechanical HW Screw, #6-32 x 1/4", PanHead, PHIL, Nylon                    | B&F™ Fasteners Supply      | NY PMS 632 0025 PH  |
| 4   | STANDOFF1, STANDOFF2, STANDOFF3, STANDOFF4 | Mechanical HW Stand-Off, #6-32 x 3/8", F, HEX, Nylon                       | Keystone Electronics Corp. | 1903B               |
| 1   | TAPE1                                      | Mechanical HW, Tape, Thermal Sheet, L254W254, custom 9 mm x 7 mm, 6 pieces | Bergquist Company GmbH     | BP100-0.008-00-1010 |

**Note 1:** The components listed in this Bill of Materials are representative of the PCB assembly. The released BOM used in manufacturing uses all RoHS-compliant components.

**TABLE B-3: BILL OF MATERIALS (BOM) FOR ADM00965**

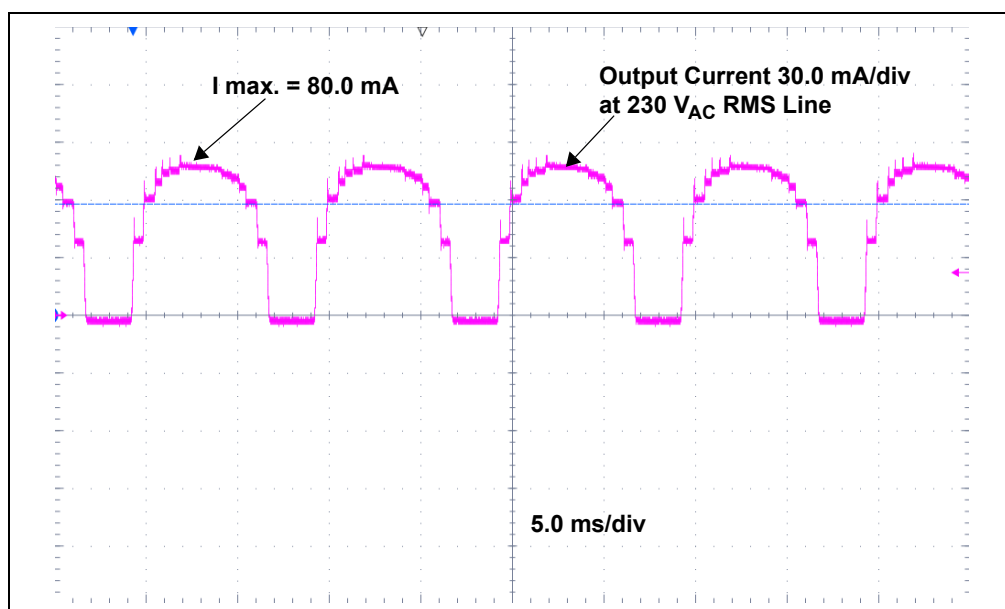
| Qty. | Reference   | Description   | Manufacturer                           | Part Number                       |
|------|---|---|--|-----------------------------------|
| 1    | HS1   | Mechanical HW Heat Sink, D60 mm x H30 mm, 9.1W, Black         | MechaTronix Kaohsiung Co., Ltd.        | LPF60A30-5-B                      |
| 1    | J3  | Connector Header, 1.27 mm, Male, 1x10, Tin, SMD, Vertical     | Digi-Key Electronics                   | WM19277-ND                        |
| 1    | LABEL1  | Label, AIPD Board Assembly                                    |  |                                   |
| 13   | LD1, LD2, LD3, LD4, LD5, LD6, LD7, LD8, LD9, LD10, LD11, LD12, LD13 | Diode LED, White, 24.8V, 150 mA, 500 lm, 2700K, SMD, L5W5H0.7 | OSRAM Opto Semiconductors GmbH         | GW P9LR31.EM-PPPR-XX 58-1-150-R18 |
| 1    | PCB1  | CL88031 LED Load Board – Printed Circuit Board                | Microchip Technology Inc.              | <b>04-10851-R1</b>                |
| 1    | R1  | Resistor Thermistor, 470k, 5%, 100 mW, 0603                   | Murata Electronics North America, Inc. | NCP18WM474J03RB                   |
| 1    | R2  | Resistor, TKF, 0R, 1/8W, SMD, 1805                            | Panasonic – ECG                        | ERJ-6GEY0R00V                     |
| 1    | R3  | <b>DO NOT POPULATE</b>  | Panasonic – ECG                        | ERJ-6GEY0R00V                     |
| 1    | TAPE1   | Mechanical HW, Tape, Thermal Sheet, L254W254, custom D60 mm   | Bergquist Company GmbH                 | BP100-0.008-00-1010               |

**Note 1:** The components listed in this Bill of Materials are representative of the PCB assembly. The released BOM used in manufacturing uses all RoHS-compliant components.

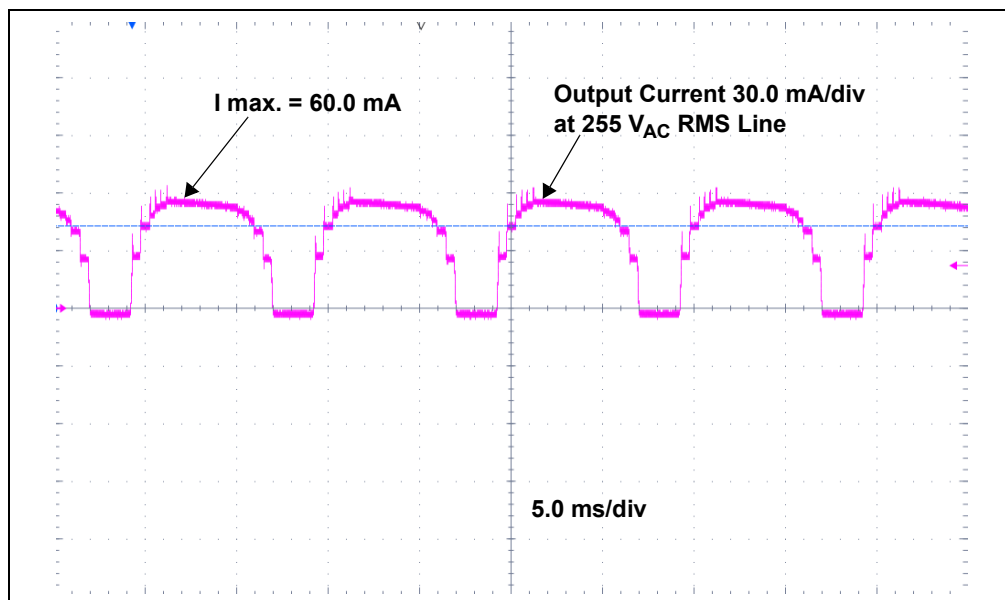
## Appendix C. Plots and Waveforms

### C.1 CL88031 230 V<sub>AC</sub> OFFLINE LED DRIVER EVALUATION BOARD TYPICAL WAVEFORMS

#### C.1.1 Total Output Current at 230 V<sub>AC</sub> and 255 V<sub>AC</sub> Input

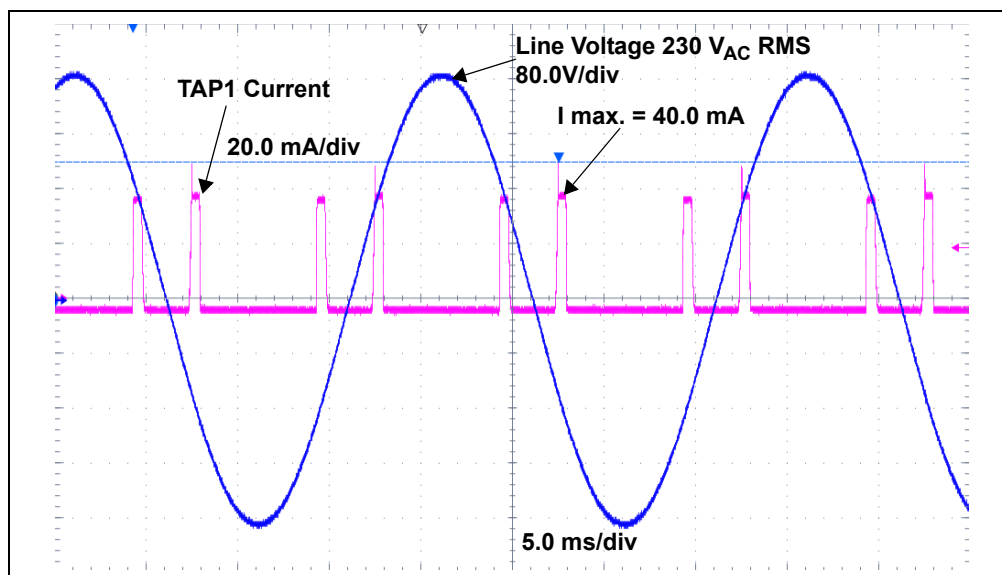


**FIGURE C-1:** Total Output Current at 230 V<sub>AC</sub> Line Input Voltage.

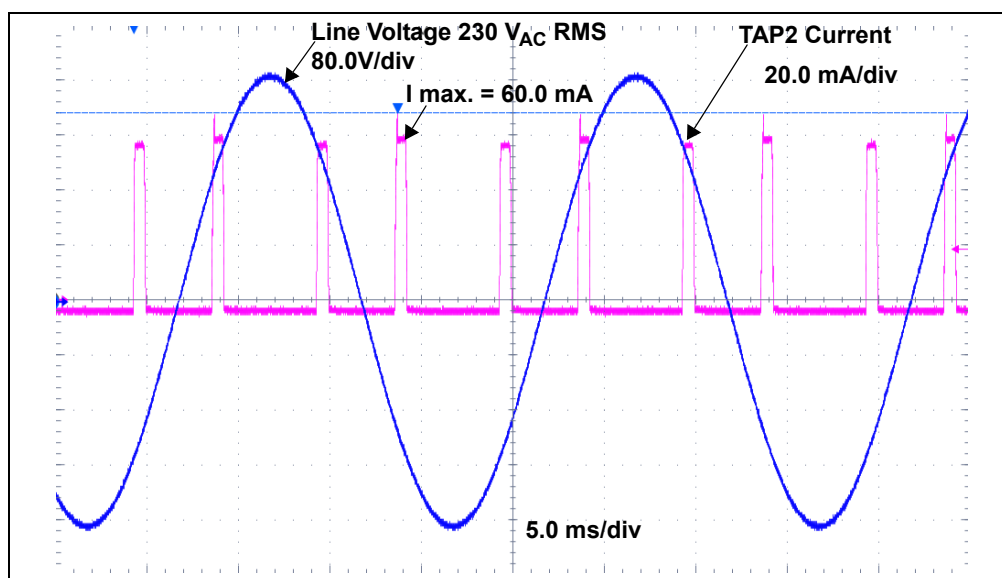


**FIGURE C-2:** Total Output Current at 255 V<sub>AC</sub> Line Input Voltage.

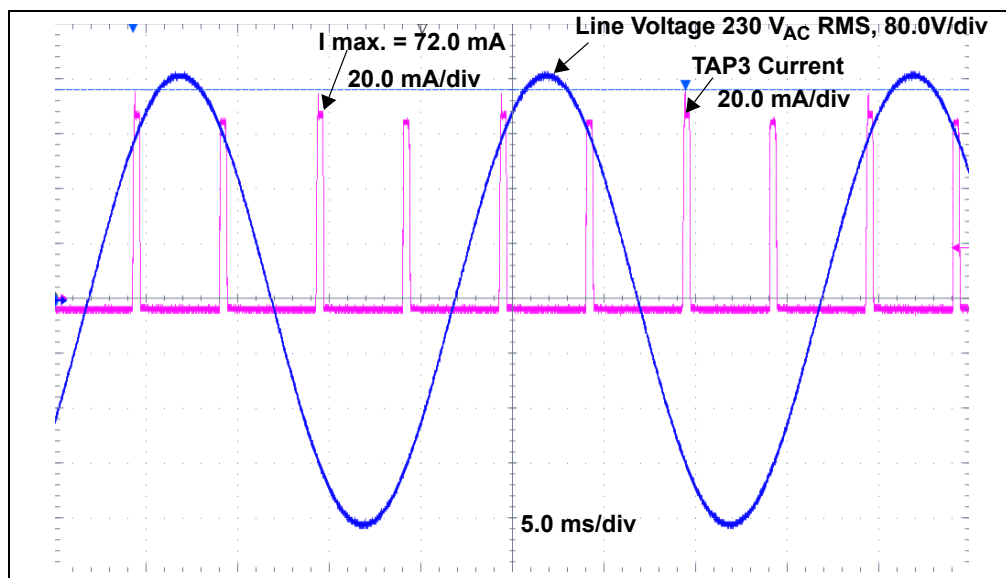
## C.1.2 TAPs 1, 2, 3, 4, 5, 6 Currents at 230 V<sub>AC</sub>



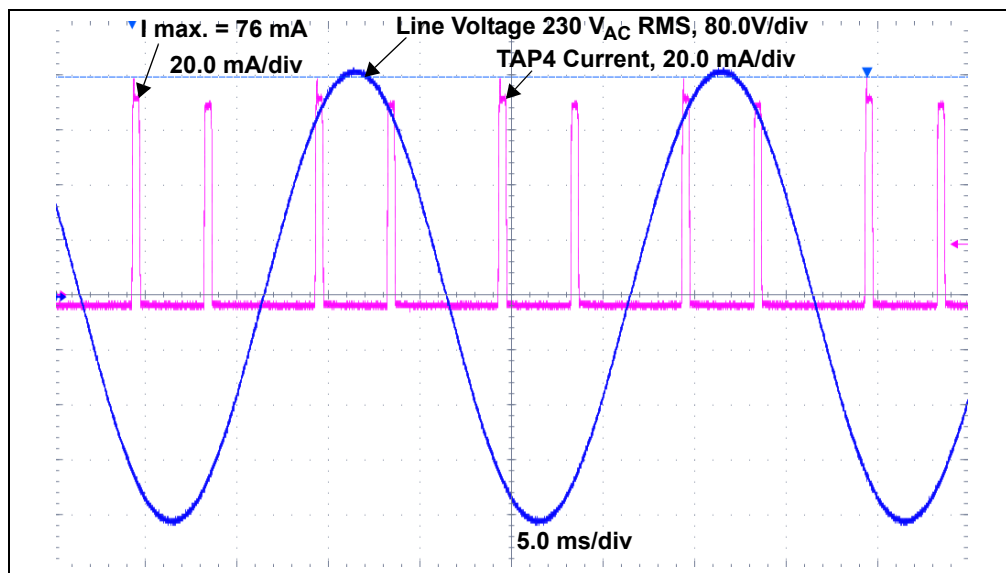
**FIGURE C-3:** TAP1 Current and Input Line Voltage.



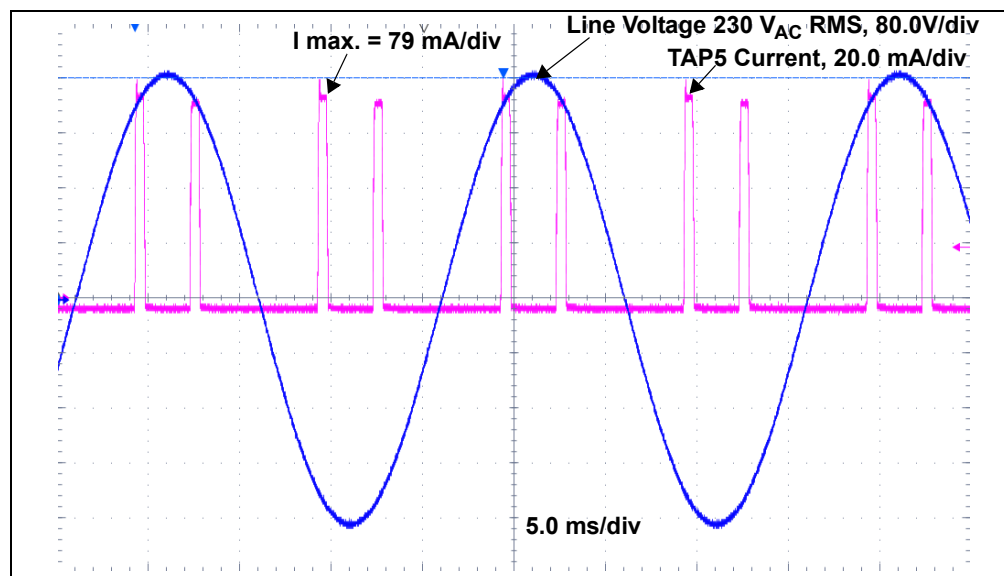
**FIGURE C-4:** TAP2 Current and Input Line Voltage.



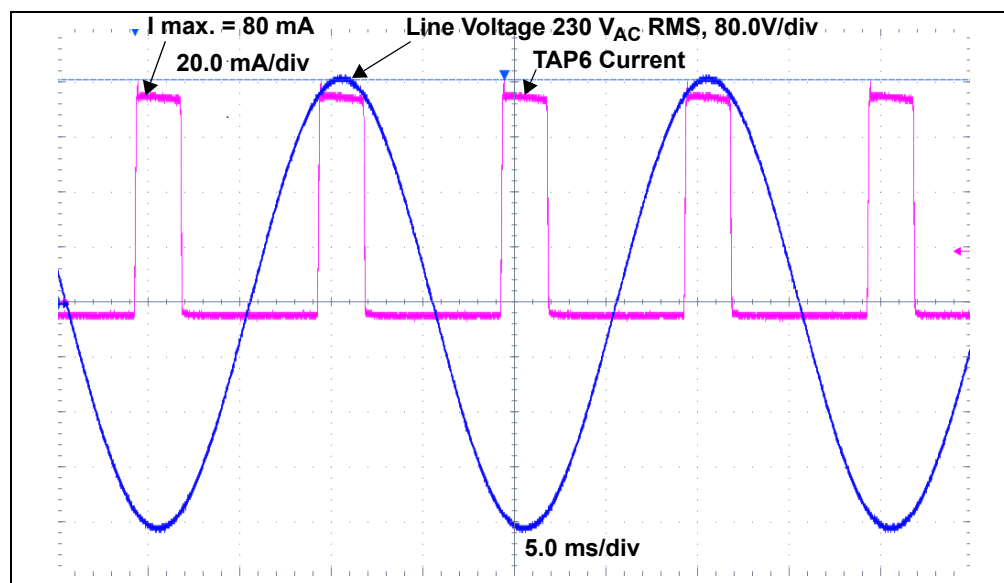
**FIGURE C-5:** TAP3 Current and Input Line Voltage.



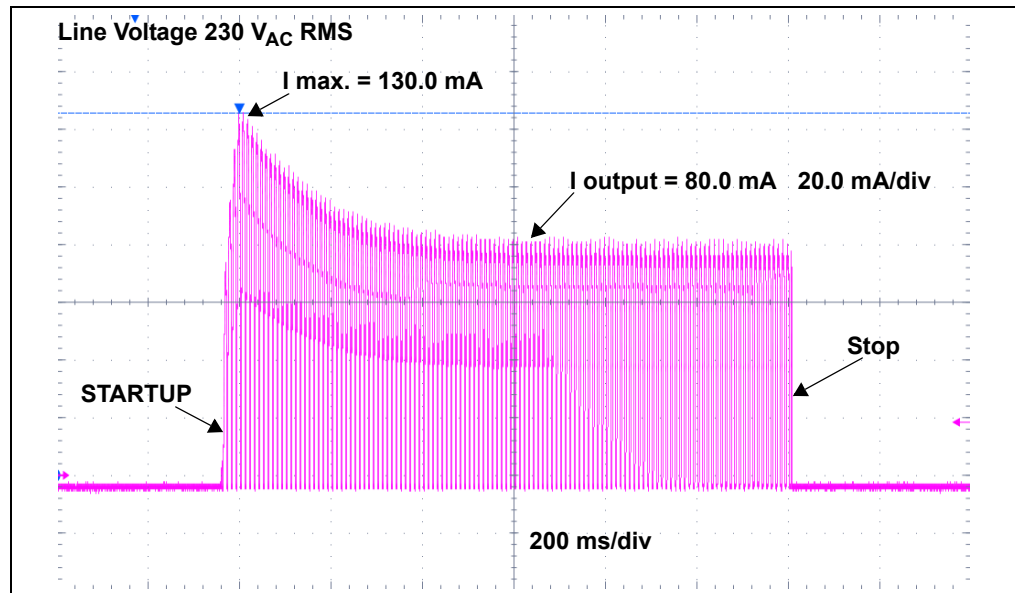
**FIGURE C-6:** TAP4 Current and Input Line Voltage.



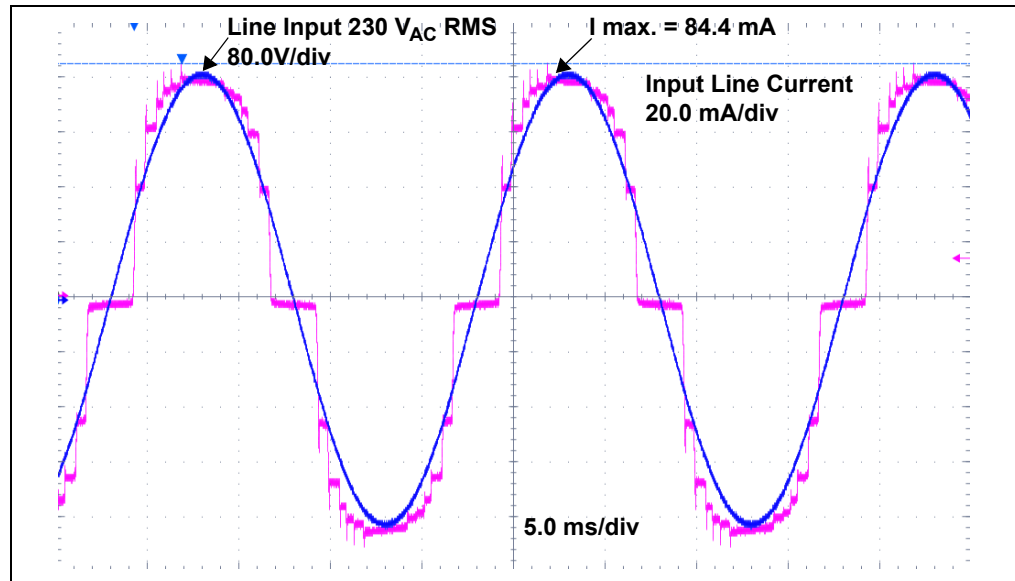
**FIGURE C-7:** TAP5 Current and Input Line Voltage.



**FIGURE C-8:** TAP6 Current and Input Line Voltage.



**FIGURE C-9:** Output Current on Startup at 230 V<sub>AC</sub> Input Line.



**FIGURE C-10:** Input Current and Input Voltage Waveforms at 230 V<sub>AC</sub> Input.

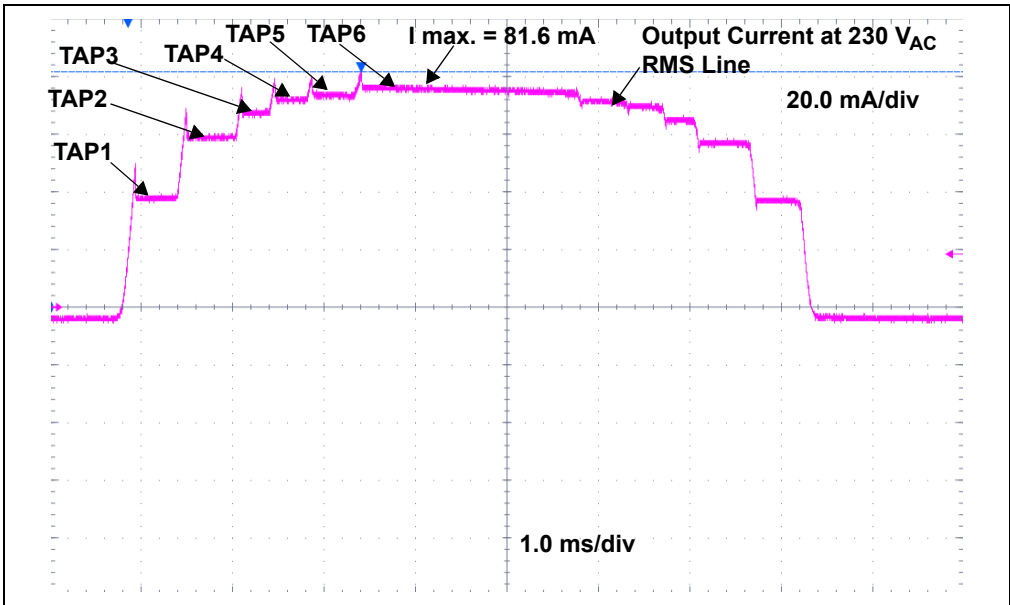


FIGURE C-11: Output Current Waveform - TAPs Commutation.

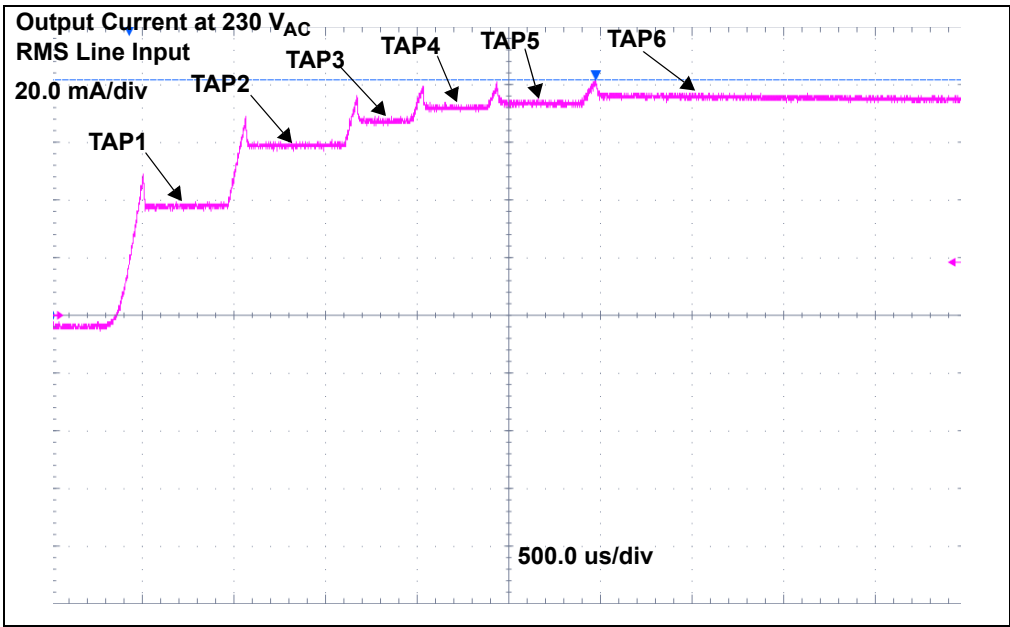
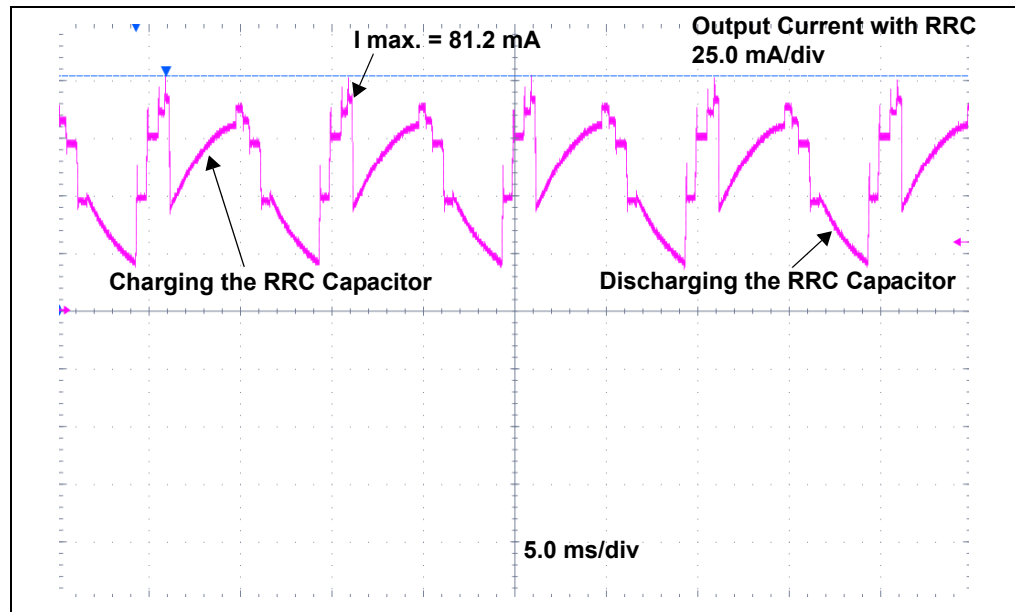


FIGURE C-12: Output Current Waveform - TAPs Commutation Detail.



**FIGURE C-13:** Output Current with Ripple Reduction Circuit at 230 V<sub>AC</sub> Input.

C.2 CL88031 230 V<sub>AC</sub> OFFLINE LED DRIVER EVALUATION BOARD TYPICAL MEASUREMENTS

**Note:** The graphs and tables provided following this note are a statistical summary based on a limited number of samples and are provided for informational purposes only. The performance characteristics listed herein are **not** tested or guaranteed. In some graphs or tables, the data presented may be outside the specified operating range (e.g., outside specified power supply range) and therefore outside the warranted range.

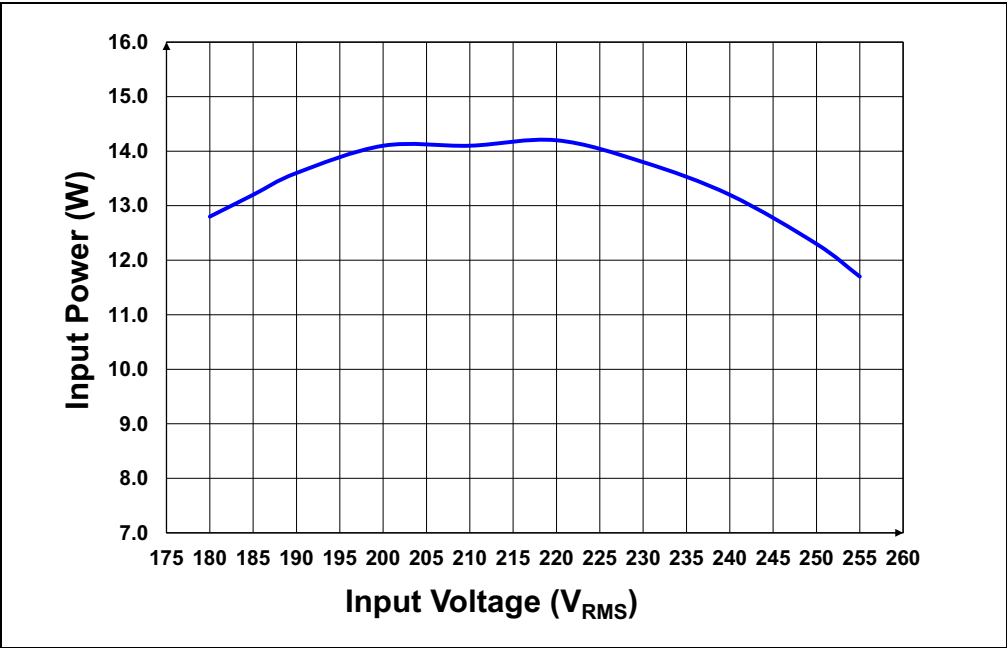


FIGURE C-14: Input Power vs. Input Voltage (V<sub>RMS</sub>).

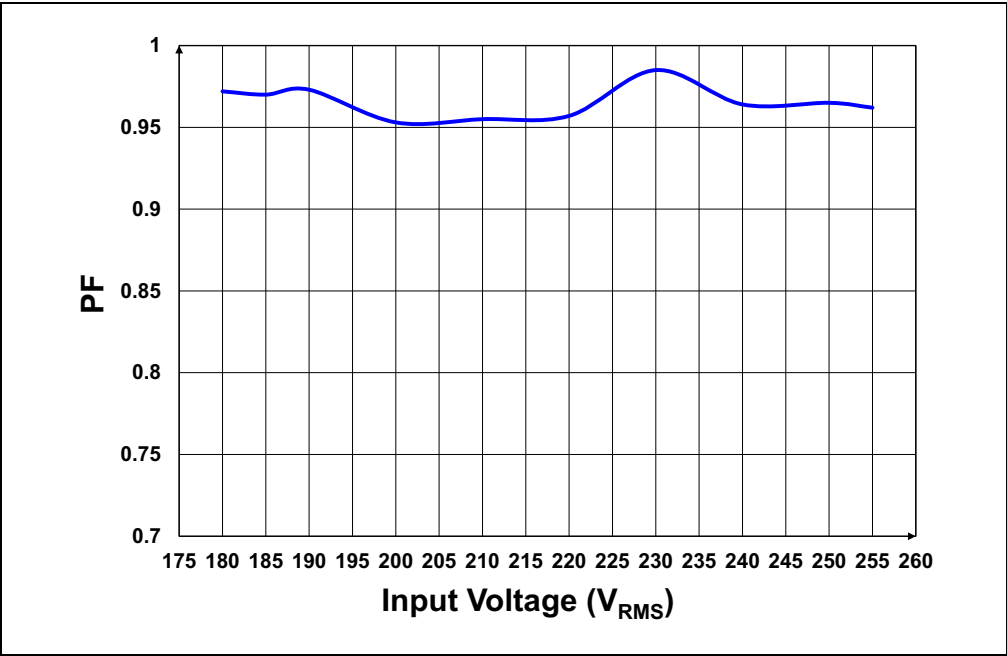
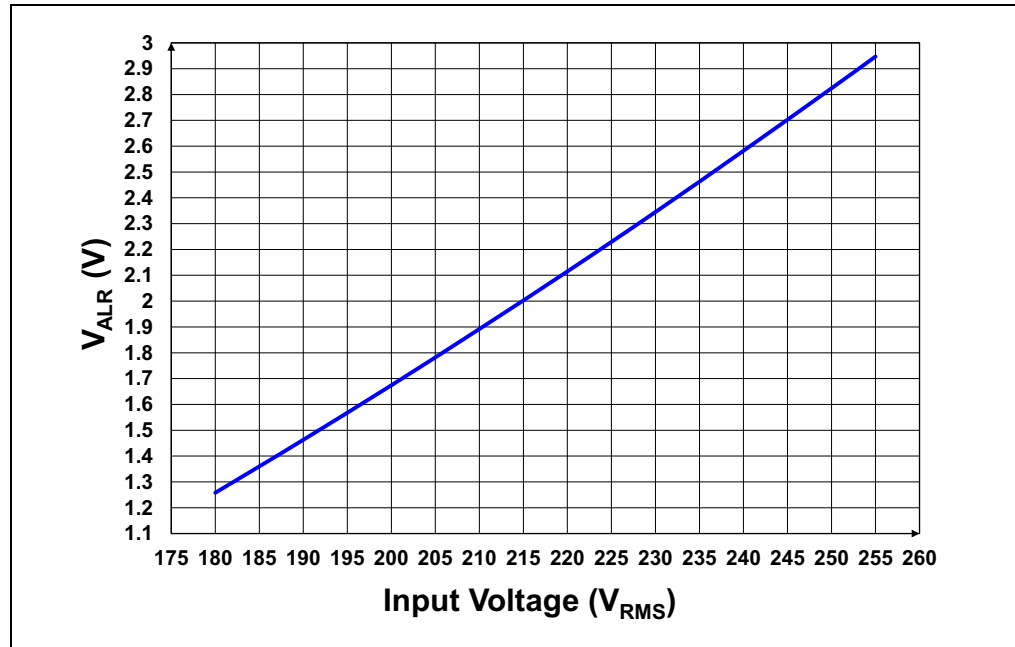
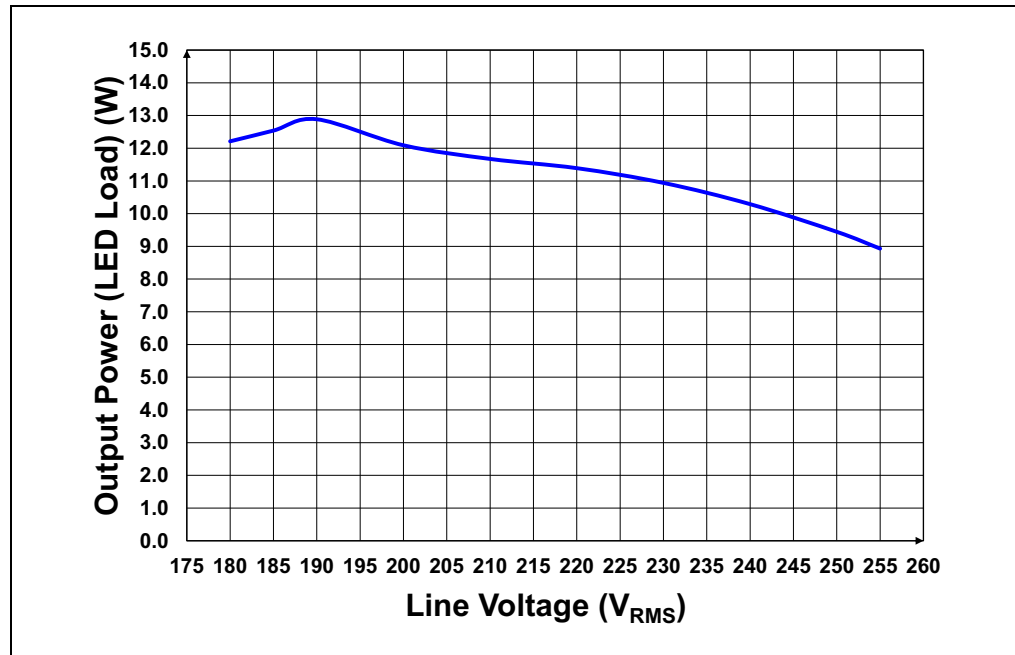


FIGURE C-15: Power Factor vs. Input Voltage (V<sub>RMS</sub>).



**FIGURE C-16:**  $V_{ALR}$  Pin vs. Input Voltage ( $V_{RMS}$ ).



**FIGURE C-17:** Output Power (Electric) vs. Input Line Voltage ( $V_{RMS}$ ).

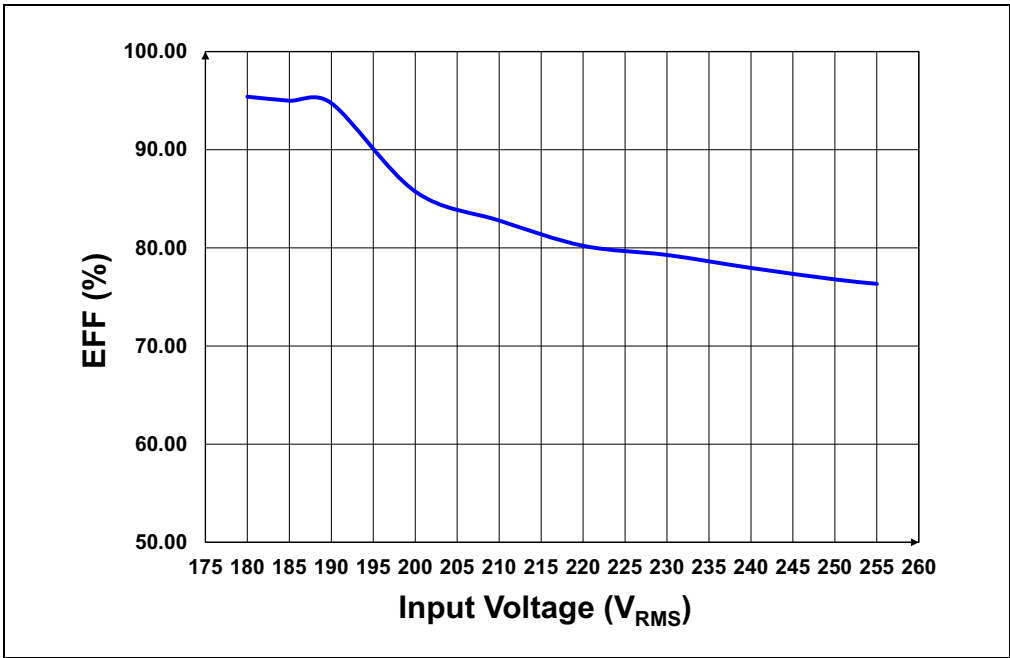


FIGURE C-18: Electrical Efficiency vs. Input Voltage (V<sub>RMS</sub>).

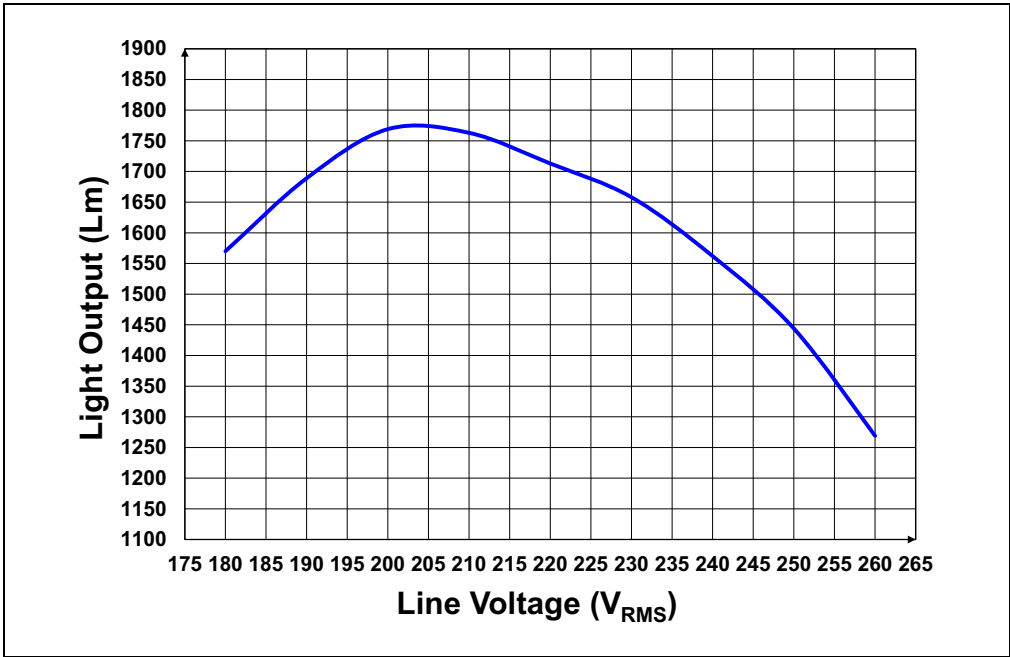
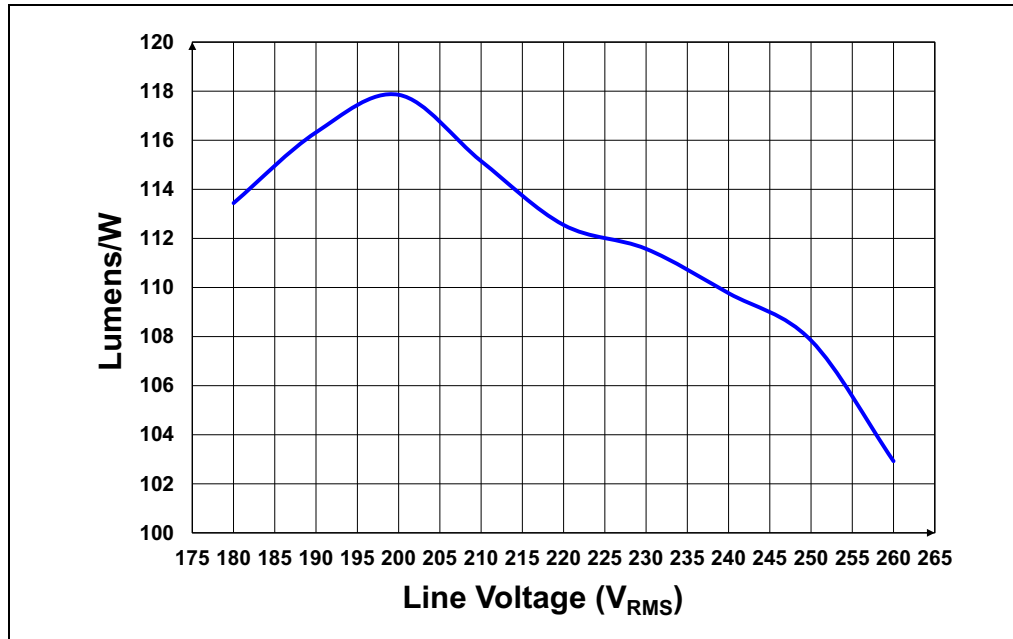


FIGURE C-19: Light Output vs. Input Voltage (V<sub>RMS</sub>).



**FIGURE C-20:** Luminous Efficacy (Lumens/W) vs. Input Voltage ( $V_{RMS}$ ).

NOTES:

## Worldwide Sales and Service

### AMERICAS

**Corporate Office**  
2355 West Chandler Blvd.  
Chandler, AZ 85224-6199  
Tel: 480-792-7200  
Fax: 480-792-7277  
Technical Support:  
<http://www.microchip.com/support>  
Web Address:  
[www.microchip.com](http://www.microchip.com)

**Atlanta**  
Duluth, GA  
Tel: 678-957-9614  
Fax: 678-957-1455

**Austin, TX**  
Tel: 512-257-3370

**Boston**  
Westborough, MA  
Tel: 774-760-0087  
Fax: 774-760-0088

**Chicago**  
Itasca, IL  
Tel: 630-285-0071  
Fax: 630-285-0075

**Dallas**  
Addison, TX  
Tel: 972-818-7423  
Fax: 972-818-2924

**Detroit**  
Novi, MI  
Tel: 248-848-4000

**Houston, TX**  
Tel: 281-894-5983

**Indianapolis**  
Noblesville, IN  
Tel: 317-773-8323  
Fax: 317-773-5453  
Tel: 317-536-2380

**Los Angeles**  
Mission Viejo, CA  
Tel: 949-462-9523  
Fax: 949-462-9608  
Tel: 951-273-7800

**Raleigh, NC**  
Tel: 919-844-7510

**New York, NY**  
Tel: 631-435-6000

**San Jose, CA**  
Tel: 408-735-9110  
Tel: 408-436-4270

**Canada - Toronto**  
Tel: 905-695-1980  
Fax: 905-695-2078

### ASIA/PACIFIC

**Australia - Sydney**  
Tel: 61-2-9868-6733

**China - Beijing**  
Tel: 86-10-8569-7000

**China - Chengdu**  
Tel: 86-28-8665-5511

**China - Chongqing**  
Tel: 86-23-8980-9588

**China - Dongguan**  
Tel: 86-769-8702-9880

**China - Guangzhou**  
Tel: 86-20-8755-8029

**China - Hangzhou**  
Tel: 86-571-8792-8115

**China - Hong Kong SAR**  
Tel: 852-2943-5100

**China - Nanjing**  
Tel: 86-25-8473-2460

**China - Qingdao**  
Tel: 86-532-8502-7355

**China - Shanghai**  
Tel: 86-21-3326-8000

**China - Shenyang**  
Tel: 86-24-2334-2829

**China - Shenzhen**  
Tel: 86-755-8864-2200

**China - Suzhou**  
Tel: 86-186-6233-1526

**China - Wuhan**  
Tel: 86-27-5980-5300

**China - Xian**  
Tel: 86-29-8833-7252

**China - Xiamen**  
Tel: 86-592-2388138

**China - Zhuhai**  
Tel: 86-756-3210040

### ASIA/PACIFIC

**India - Bangalore**  
Tel: 91-80-3090-4444

**India - New Delhi**  
Tel: 91-11-4160-8631

**India - Pune**  
Tel: 91-20-4121-0141

**Japan - Osaka**  
Tel: 81-6-6152-7160

**Japan - Tokyo**  
Tel: 81-3-6880-3770

**Korea - Daegu**  
Tel: 82-53-744-4301

**Korea - Seoul**  
Tel: 82-2-554-7200

**Malaysia - Kuala Lumpur**  
Tel: 60-3-7651-7906

**Malaysia - Penang**  
Tel: 60-4-227-8870

**Philippines - Manila**  
Tel: 63-2-634-9065

**Singapore**  
Tel: 65-6334-8870

**Taiwan - Hsin Chu**  
Tel: 886-3-577-8366

**Taiwan - Kaohsiung**  
Tel: 886-7-213-7830

**Taiwan - Taipei**  
Tel: 886-2-2508-8600

**Thailand - Bangkok**  
Tel: 66-2-694-1351

**Vietnam - Ho Chi Minh**  
Tel: 84-28-5448-2100

### EUROPE

**Austria - Wels**  
Tel: 43-7242-2244-39  
Fax: 43-7242-2244-393

**Denmark - Copenhagen**  
Tel: 45-4450-2828  
Fax: 45-4485-2829

**Finland - Espoo**  
Tel: 358-9-4520-820

**France - Paris**  
Tel: 33-1-69-53-63-20  
Fax: 33-1-69-30-90-79

**Germany - Garching**  
Tel: 49-8931-9700

**Germany - Haan**  
Tel: 49-2129-3766400

**Germany - Heilbronn**  
Tel: 49-7131-67-3636

**Germany - Karlsruhe**  
Tel: 49-721-625370

**Germany - Munich**  
Tel: 49-89-627-144-0  
Fax: 49-89-627-144-44

**Germany - Rosenheim**  
Tel: 49-8031-354-560

**Israel - Ra'anana**  
Tel: 972-9-744-7705

**Italy - Milan**  
Tel: 39-0331-742611  
Fax: 39-0331-466781

**Italy - Padova**  
Tel: 39-049-7625286

**Netherlands - Drunen**  
Tel: 31-416-690399  
Fax: 31-416-690340

**Norway - Trondheim**  
Tel: 47-7289-7561

**Poland - Warsaw**  
Tel: 48-22-3325737

**Romania - Bucharest**  
Tel: 40-21-407-87-50

**Spain - Madrid**  
Tel: 34-91-708-08-90  
Fax: 34-91-708-08-91

**Sweden - Gothenberg**  
Tel: 46-31-704-60-40

**Sweden - Stockholm**  
Tel: 46-8-5090-4654

**UK - Wokingham**  
Tel: 44-118-921-5800  
Fax: 44-118-921-5820

# Mouser Electronics

Authorized Distributor

Click to View Pricing, Inventory, Delivery & Lifecycle Information:

[Microchip:](#)

[ADM00965](#) [ADM00963](#)



**Стандарт  
Электрон  
Связь**

Мы молодая и активно развивающаяся компания в области поставок электронных компонентов. Мы поставляем электронные компоненты отечественного и импортного производства напрямую от производителей и с крупнейших складов мира.

Благодаря сотрудничеству с мировыми поставщиками мы осуществляем комплексные и плановые поставки широчайшего спектра электронных компонентов.

Собственная эффективная логистика и склад в обеспечивает надежную поставку продукции в точно указанные сроки по всей России.

Мы осуществляем техническую поддержку нашим клиентам и предпродажную проверку качества продукции. На все поставляемые продукты мы предоставляем гарантию .

Осуществляем поставки продукции под контролем ВП МО РФ на предприятия военно-промышленного комплекса России , а также работаем в рамках 275 ФЗ с открытием отдельных счетов в уполномоченном банке. Система менеджмента качества компании соответствует требованиям ГОСТ ISO 9001.

Минимальные сроки поставки, гибкие цены, неограниченный ассортимент и индивидуальный подход к клиентам являются основой для выстраивания долгосрочного и эффективного сотрудничества с предприятиями радиоэлектронной промышленности, предприятиями ВПК и научно-исследовательскими институтами России.

С нами вы становитесь еще успешнее!

**Наши контакты:**

**Телефон:** +7 812 627 14 35

**Электронная почта:** [sales@st-electron.ru](mailto:sales@st-electron.ru)

**Адрес:** 198099, Санкт-Петербург,  
Промышленная ул, дом № 19, литера Н,  
помещение 100-Н Офис 331