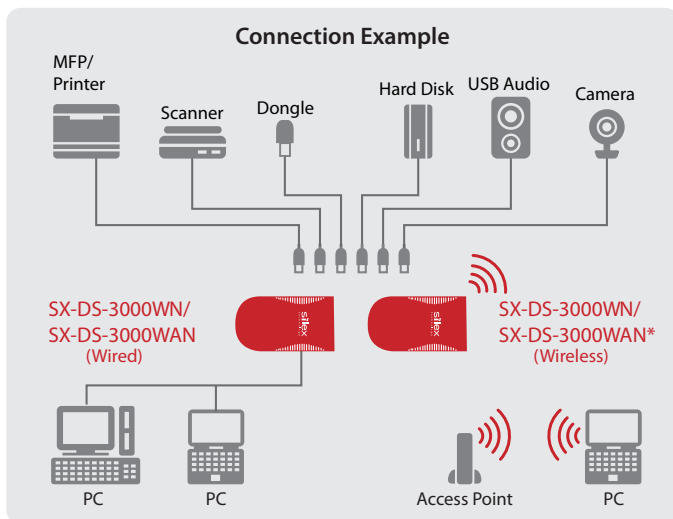


# SX-DS-3000WN / SX-DS-3000WAN\* 802.11n Wireless and Gigabit Ethernet USB Device Server



Easily Connect and Share Virtually any USB Device on a Network

The SX-DS-3000WN/SX-DS-3000WAN\* is a USB Device Server from Silex Technology supporting 802.11n wireless or Gigabit Ethernet. Printers, scanners, hard drives, dongles, and other USB devices can be used over the network via 2 USB Hi-Speed ports as though they were connected to the computer.



- **AutoConnect Feature**

The Printer AutoConnect feature allows multiple computers to easily share a USB printer over the network. It makes an automatic connection to the printer and automatically disconnects after the print job is sent, making the device server available to the next user.

- **Virtual Environments**

The USB Device Server is compatible with the following virtualization programs and environments: VMware, Citrix, Microsoft Terminal Server and Hyper-V.

- **No Special Drivers or Applications**

The drivers and applications that worked when the USB device is directly connected to the computer will continue to work.

- **OEM Solutions**

Silex offers device manufacturers the USB Virtual Link technology as an OEM product. For hardware there is an installation module and for software there is a SDK to integrate the mature USB Virtual Link technology into any product, such as routers, access points, NAS systems or home gateways.

## Key Features:

- **Wireless Versatility**

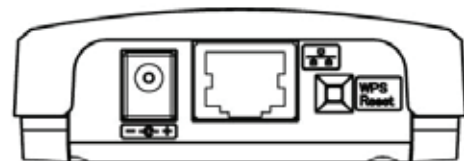
802.11n wireless connection allows you to place your USB device anywhere within range of your wireless network, or you can connect it to your Gigabit wired Ethernet network.

- **Fast Network Speeds**

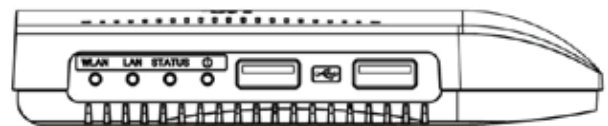
The 802.11n wireless connection supports up to 300Mbps or the wired Gigabit Ethernet connection supports up to 1000Mbps throughput (theoretical maximum speeds). Actual performance will be slower due to network and interference.

- **Print Server Function**

Supports standard TCP/IP printing (LPR/IPP/RAW) and general RAW-mode, LPR-mode and IPP-mode network printing protocols. When the product is connected to a printer, the standard Windows print function can be used to print.



Power connection, Gigabit Ethernet connection, WPS/reset button



Status LED's and 2 Hi-Speed USB ports with a total of 1000mA of power supply; using an optional USB hub, up to 15 USB connections can be supported.

\* Contact sales@silexamerica.com for availability of SX-DS-3000WAN.



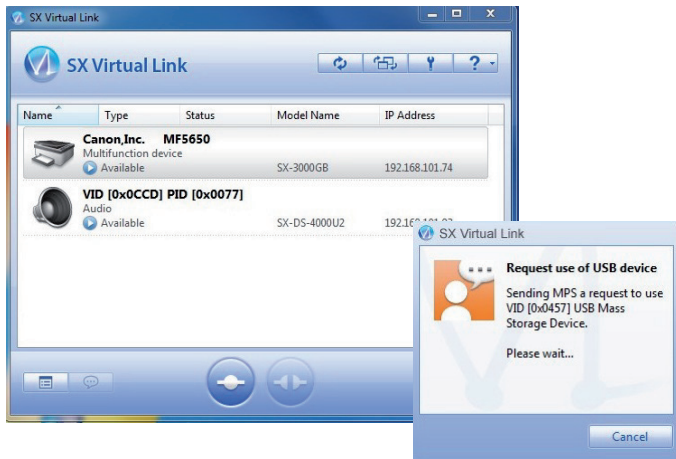
## SX-DS-3000WN / SX-DS-3000WAN\* 802.11n Wireless and Gigabit Ethernet USB Device Server

### What is SX Virtual Link?

Silex has created Software for Windows or Macintosh computers called SX-Virtual Link which precisely emulates a USB port on each of the computers that want to access the USB device over the network. The computers think that they are communicating with the device via a direct USB connection, but they are actually communicating over the network with a Silex USB Device Server product.

### What is a USB Device Server?

It is a network device that uses Silex USB Virtual Link technology to allow USB to be connected and shared on a network. Thanks to the USB Virtual Link technology from Silex Technology, virtually any USB device can be used on a network, just as though they were connected with a USB cable.



The network is searched for the product and the connected USB devices; the search results are shown in an overview on the main screen.

If another user is using a shared USB device, a request for use can be sent. It can also be specified that failure to respond to this request will automatically lead to a disconnection after a timeout. This makes it easy to share any USB device over a network in home and business environments.

### Other USB Device Servers

#### SX-3000GB

##### Gigabit USB Device Server

- Gigabit Ethernet
- 2x USB 2.0 Hi-Speed-Ports
- 250 MHz CPU

Win Mac



#### SX-DS-4000U2

##### High Performance Gigabit USB Device Server

- Gigabit Ethernet
- 2x USB 2.0 Hi-Speed-Ports
- 800 MHz CPU

Win Mac



### Specifications:

Product Name	SX-DS-3000WN	SX-DS-3000WAN*
Network Interface	10 BASE-T/100 BASE-TX/1000 BASE-T (automatic detection)	
Wireless LAN	802.11b/g/n	802.11a/b/g/n
Device Interface	2 x USB 2.0 Hi-Speed (type A) ports with a total of 1A of power supply	
Supported Protocols	TCP/IP	
Operating Systems Supported	Windows 7/8 (32/64bit), Vista (32/64bit), XP, 2000, Windows Server 2008 (32/64bit), Windows Server 2003 (32/64bit), MacOS X [PowerPC: Ver 10.3x ~ Ver 10.5x Intel: Ver 10.4.4 ~ Ver 10.8x]	
Setting Method	Configuration utility, Web browser, WPS	
External Dimensions	126.4mm x 71.5mm x 24.2mm (±2mm)	
Weight	105g	
Max. Power Consumption	2.5W (DC5V .5A) up to 7.5W (DC5V 1.5A) including 1A for USB power	
Included Items	AC adapter, CD-ROM (configuration utility, manual), Setup Guide	
Regulatory Compliance	VCCI class B / FCC class B / IC class B / CE class B	
Other	Requires SX Virtual Link Version 3.8.0 or later for Windows or Version 3.7.0 for Macintosh	

\* Contact sales@silexamerica.com for availability of SX-DS-3000WAN.

### About Silex Technology America, Inc.

Silex Technology builds on more than 40 years of hardware and software connectivity know-how and IP, custom design development experience, and in-house manufacturing capabilities, bringing value to customers with a foundation of technical expertise. With relentless attention to quality, exclusive access to Qualcomm Atheros expertise, and strategic partnerships with leading semiconductor providers, Silex Technology is the global leader in reliable Wi-Fi connectivity for products ranging from a medical device to a document imaging product to a video or digital display. With Silex Technology, customers get a single vendor that provides hardware and software support from design through manufacturing for successful product after successful product. For more information, please visit [www.silexamerica.com](http://www.silexamerica.com).

silex technology is a registered trademark of silex technology, Inc. Other product or brand names may be registered trademarks or trademarks of their respective owners. Technical information and specifications are subject to change without notice. © 2013 silex technology, Inc. All rights reserved.

### silex global sales & support locations



**US Office**  
silex technology america, Inc.  
+1-801-748-1199  
US toll free 866-765-8761  
www.silexamerica.com  
sales@silexamerica.com

**Europe Office**  
silex technology europe, GmbH  
+49-2159-65009-0  
www.silexeurope.com  
contact@silexeurope.com

**Corporate Headquarters**  
silex technology, Inc.  
+81-774-98-3781  
www.silex.jp  
support@silex.jp





## Стандарт Электрон Связь

Мы молодая и активно развивающаяся компания в области поставок электронных компонентов. Мы поставляем электронные компоненты отечественного и импортного производства напрямую от производителей и с крупнейших складов мира.

Благодаря сотрудничеству с мировыми поставщиками мы осуществляем комплексные и плановые поставки широчайшего спектра электронных компонентов.

Собственная эффективная логистика и склад в обеспечивает надежную поставку продукции в точно указанные сроки по всей России.

Мы осуществляем техническую поддержку нашим клиентам и предпродажную проверку качества продукции. На все поставляемые продукты мы предоставляем гарантию .

Осуществляем поставки продукции под контролем ВП МО РФ на предприятия военно-промышленного комплекса России , а также работаем в рамках 275 ФЗ с открытием отдельных счетов в уполномоченном банке. Система менеджмента качества компании соответствует требованиям ГОСТ ISO 9001.

Минимальные сроки поставки, гибкие цены, неограниченный ассортимент и индивидуальный подход к клиентам являются основой для выстраивания долгосрочного и эффективного сотрудничества с предприятиями радиоэлектронной промышленности, предприятиями ВПК и научно-исследовательскими институтами России.

С нами вы становитесь еще успешнее!

### Наши контакты:

**Телефон:** +7 812 627 14 35

**Электронная почта:** [sales@st-electron.ru](mailto:sales@st-electron.ru)

**Адрес:** 198099, Санкт-Петербург,  
Промышленная ул, дом № 19, литера Н,  
помещение 100-Н Офис 331