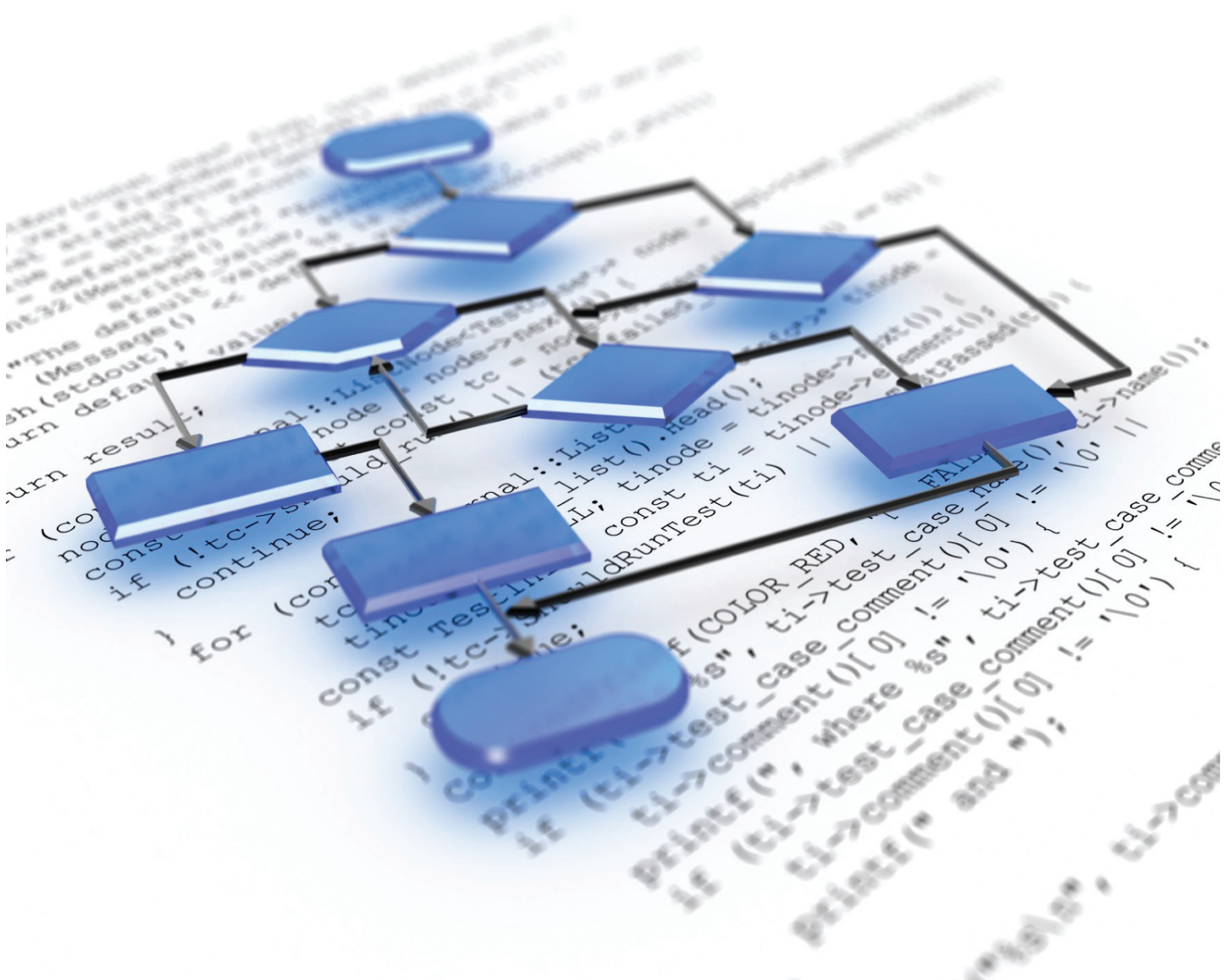


# controlSUITE™ software



**Comprehensive. Intuitive. Optimized.**  
Real-world software for real-time control.



**controlSUITE™ software** Comprehensive. Intuitive. Optimized. Real-world software for real-time control.

controlSUITE for C2000™ microcontrollers is a cohesive software suite designed to minimize software development time. From device-specific drivers and support software to complete system examples in sophisticated system applications, controlSUITE provides solutions at every stage of development and evaluation.

### controlSUITE Benefits

#### One stop for all C2000 software

- Single, centralized location
- Intelligent installer eliminates the search for dependencies

#### Open, real-world systems

- Compilation of 15 years of systems and applications expertise
- Unique, optimized libraries for math, filtering, DSP and specific applications with complete system examples utilizing incremental builds
- Allows developers to focus on differentiation, not basics

#### Program the MCU your way

- Significantly reduces development time with hardware abstraction and extensive libraries
- Four inter-usable levels of hardware abstraction

TEXAS INSTRUMENTS

Products Applications Design Support Sample & Buy

TI Home > Microcontrollers (MCU) > C2000 MCUs for Real-time Control

Microcontrollers (MCU)

MCU Products • MCU Design Support • Getting Started • MCU Selection Tool • Training

MCU Product Tree

HSP430™ 16-bit Ultra-Low Power MCUs (200)

- 1xx 8MHz Series (36)
- 2xx 16MHz Series (39)
- 3xx Legacy 8MHz Series (16)
- 4xx 8/16MHz LCD Series (87)
- 5xx 25MHz Series (20)
- CC430 RF SoC Series (2)

C2000 MCUs for Real-time Control (12)

- 28x Delfino™ Floating-point Series (9)
- 28x Piccolo™ Series (26)
- 28x Fixed-point Series (23)
- 24x 16-bit Series (13)

Applications

- > Motor Control
- > Digital Power

Support

- > Contact Technical Support
- > Knowledgebase
- > C2000 Discussion Group

C2000 MCUs for Real-time Control

Overview Product Search Tech Docs Tools **controlSUITE** Training Partners

ControlSUITE™

A comprehensive software platform for all your needs. Begin with device-specific peripheral configuration packs, which contain the baseline software and examples for you to hit the ground running. When you're ready to harness C2000's abilities in a real application, simply add the application libraries or system examples.

Run controlSUITE™ Installer

Run our smart installer and pick the packages you would like to use. All dependencies will be automatically downloaded and installed.

For pre-controlSUITE software, visit the [legacy software page](#).

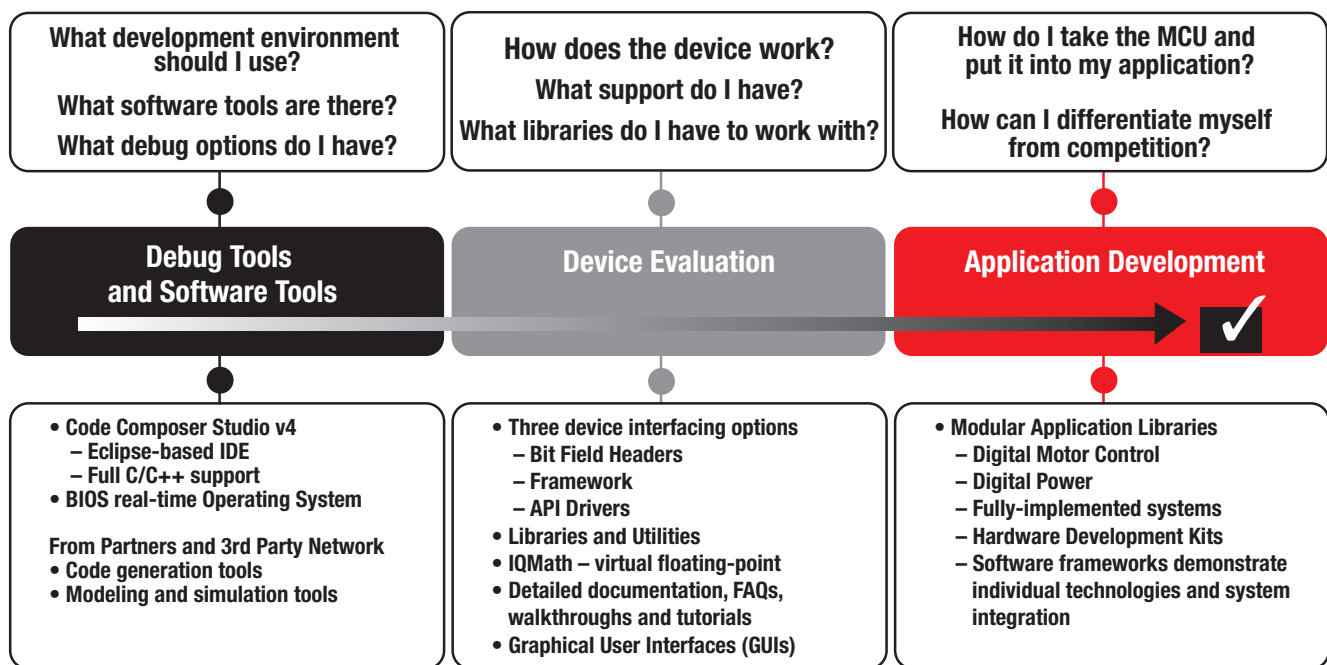
Learn more about

Device Support | Libraries | Application Kit Packages | Debug and Software Tools

Looking deeper into controlSUITE's contents, you can see how it's a comprehensive top-down set of software and software tools to guide development from beginning to end.

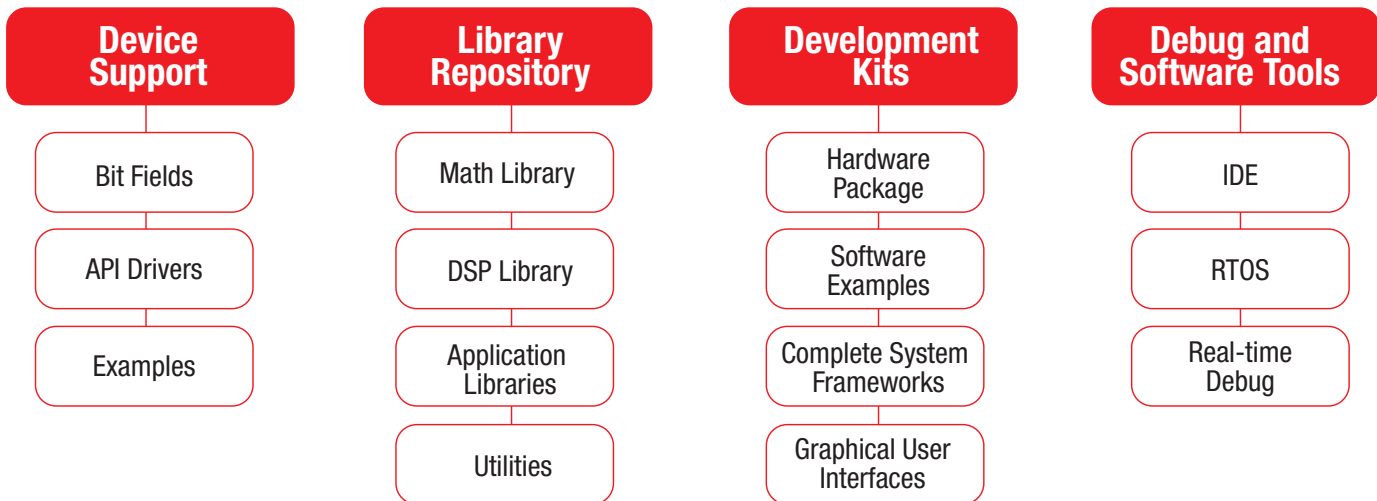
controlSUITE is a single portal for all C2000 software.

**An embedded engineer must answer many critical questions when selecting a new MCU platform. controlSUITE turns those questions into answers.**



## controlSUITE Overview

Device drivers, APIs, utilities and libraries are used to build technology examples and system frameworks that are demonstrated on open source hardware using TI's professional debug tools.



### controlSUITE provides solutions

***I never know if I am aware of every resource that's available.***

Install controlSUITE once and it delivers a comprehensive package of every resource available for your device or application.

***I am never sure I am using the latest version of software, or if something completely new has been released.***

controlSUITE can automatically or manually synchronize with a central repository, keeping you up to date with the latest revisions or newest offerings

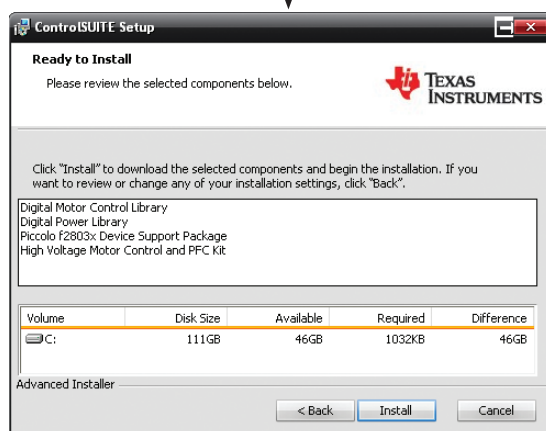
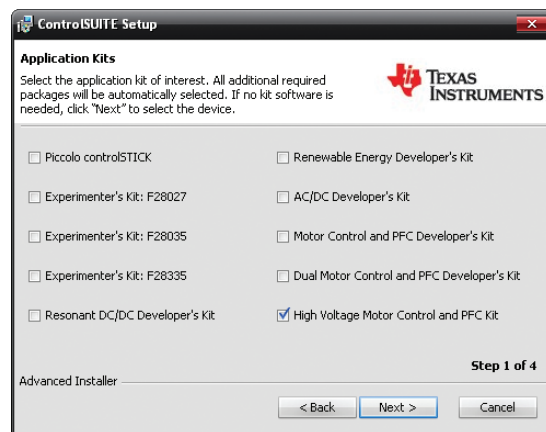
***My current vendor provides resources that are a) good, but expensive b) free, but are not properly supported c) licensed, and will not provide source.***

Everything in controlSUITE is completely free, meticulously documented, under version control, and nearly 100% open source on all software and hardware.

***I like to explore a system example, then tweak to my needs vs. I like to build my application from the ground up, bit by bit.***

controlSUITE offers the complete solution, with four levels of hardware abstraction, libraries, software examples, full systems, and GUIs you can jump in at any level depending on your experience and comfort.

### Intelligent Installer eliminates the search for dependencies, keeps users up-to-date



**Device Support** Source code and examples that enable easy device and peripheral initialization and configuration

### 4-level Hardware Abstraction Layer

#### Level 1 – Registers and Addresses

Baseline assembly or C communication to all hardware registers and addresses. Most MCU vendors stop here.

#### Level 2 – Bit Fields

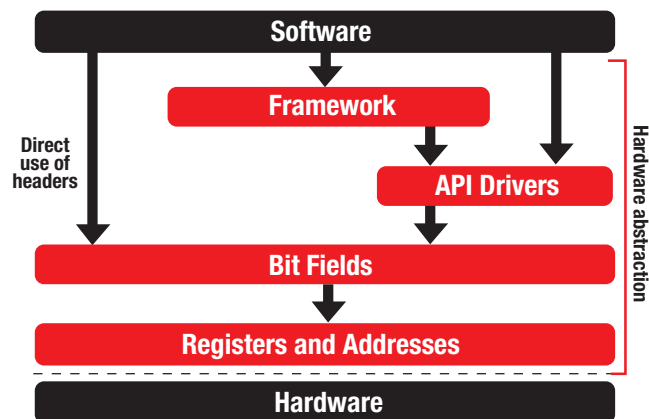
At the heart of C2000 software is a set of memory-mapped bit fields and structures that make registers and register bits seem like simple variables.

- Bit fields can be manipulated without masking
- Flexibility to access a register as a whole or by bits
- Auto-complete field names in CCStudio
- View in CCStudio watch window just like variables

#### Level 3 – API Drivers

The peripheral API drivers are a high-level library of functions that wrap common tasks into parameter-based functions.

- C call-able functions that automatically set register bit fields
- Further reduces learning curve for new programmers
- Common tasks and peripheral modes supported



#### Level 4 – Framework

Built primarily upon the bit field headers, the framework represents a system template and starting point for all applications.

- Function-based device initialization, allowing users to focus on application code
- System management via state machines set to run at a specific frequency
- Ability to connect to an external GUI via SCI
- Simple switching between RAM and Flash eases early development
- Pre-configured GPIO mapping

### Example code provided across all levels

#### Using direct register access

```
//Interrupts set up elsewhere

//Set duty cycle
MOVW    @9,#0x0F,UNC

//Set PWM1A on Zero Event
AND     AL,@11,#0xFFFC
ORB     AL,#0x02
MOV     @11,AL

//Clear PWM1A on Up-count
//CompareA event
AND     AL,@11,#0xFFCF
ORB     AL,#0x10
MOV     @11,AL
```

#### Using bit field headers

```
interrupt void IsrAdc( void )
{
    // Period of ePWM1 is set in init;
    // Multiply period by desired duty
    // to get CMPA value;
    EPwm1Regs.CMPA.half.CMPA =
        EPwm1Regs.TBPRD * duty;
}
```

#### Using API Driver

```
interrupt void IsrAdc( void )
{
    /* set a new pwm value */
    PWM_setDutyA(PWM_MODULE_2, duty );
}
```

## Libraries Core building blocks and utilities used across all systems

**DSP Library** – Provides a wealth of popular DSP operation including FFTs, filters, vector math and matrix math.

**Utilities** – Flash API and Boot ROM Utilities

### IQMath Library

A library and compiler intrinsic that allows you to select your range and resolution by choosing which bits of your binary represented number are integer (I) and which are the quotient (Q). It also allows you to write C functions in floating point format instead of dealing with fixed-point scaling, and the compiler takes care of the rest.

**Math Library** – Basic math operations such as trigonometry issued across three sets of libraries – optimized for fixed-point, floating-point or the Control Law Accelerator (CLA).

- Change numerical range on the fly, global or local
- Tune for best resolution and dynamic range
- Remove quantization effects
- Reduce scaling and saturation burden
- Better integration with simulation and code gen tools
- Single source set between fixed and floating point

## Application Libraries

Specialized, application specific software functions

- Modular macros with variable inputs and outputs
- At initialization all variables are defined and outputs of one block are set as inputs to the next
- Complete documentation – including source code, use and technical theory – is provided for every module

## Digital Motor Control Library

### Transforms and Estimators

- Clarke, Park, SMObserver, Phase Voltage, Resolver, Flux, Speed Calculators and Estimators

### Control

- Signal Generation, PID, BEMF Commutation, Space Vector Generators

### Peripheral Drivers

- Different modes and topology support
- ADC, PWM, Encoders, Sensor Captures

## Digital Power Library

### Control and Math

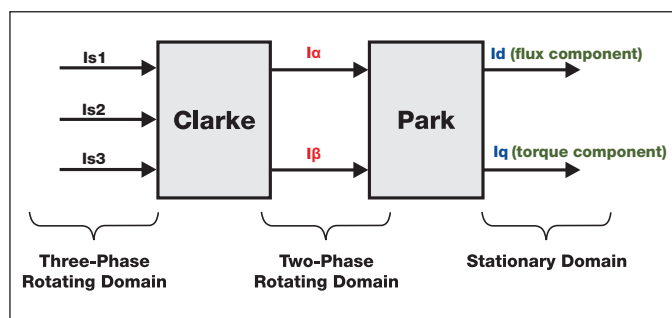
- 2P2Z, 3P3Z, IIR, PID, AC Rect, PFC, Constant Power/Voltage, Peak/Average/Over Current, LLC, Ramp/Sine/Slew Generators, Sequencers, PID Mapping, Data Logging, Math, Filters

### Topologies

- SynchBuck, SB2IL, SB3IL, BuckBoost, PSFB, PFC+MPIL, HHB, FB, Resonant, High Res, DAC

### Analog Drivers

- Different modes and configurations – ADC, COMP



### Ex: Using “Park” from DMC Library

```
//initialization code, define macro per library
#define PARK_MACRO(v)
v.Ds = _IQmpy(v.Alpha,v.Cosine) + _IQmpy(v.Beta,v.Sine);
v.Qs = _IQmpy(v.Beta,v.Cosine) - _IQmpy(v.Alpha,v.Sine);

//incremental build code, connect outputs and inputs
park1.Alpha = clarke1.Alpha;
park1.Beta = clarke1.Beta;

//run-time code, call the function
PARK_MACRO(park1)
```

## Applications: Motor Control

Full example systems have been built using the Digital Motor Control (DMC) library

### Incremental Build

DMC example systems all use an Incremental Build approach, which allows an incremental section of code to be built so that the developer can verify each section of their application one step at a time. This is critical in real-time control applications with so many different variables that may affect the system and so many unique challenges across motor parameters.

For example, in the Sensorless PMSM FOC system below the following incremental builds are built into the software:

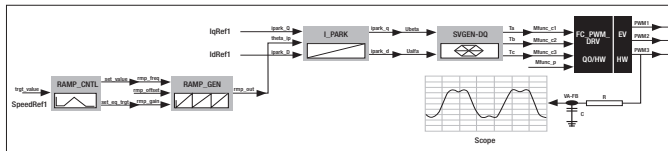
**Build Level 1:** Using a dummy signal, verify Inverse Park, Space Vector and PWM driver are producing correct waveforms

**Build Level 2:** Verify ADC conversion, Phase Voltage calculation, Clarke and Park transforms

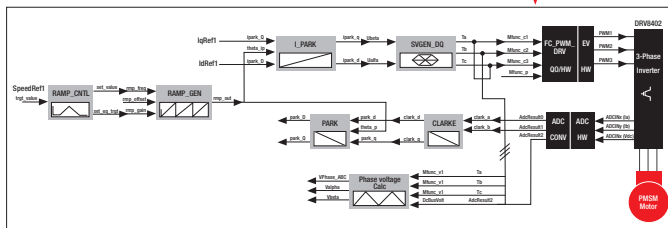
**Build Level 3:** Closed loop PID current control verification

**Build Level 4:** Sliding Mode Observer and Speed Estimator verification

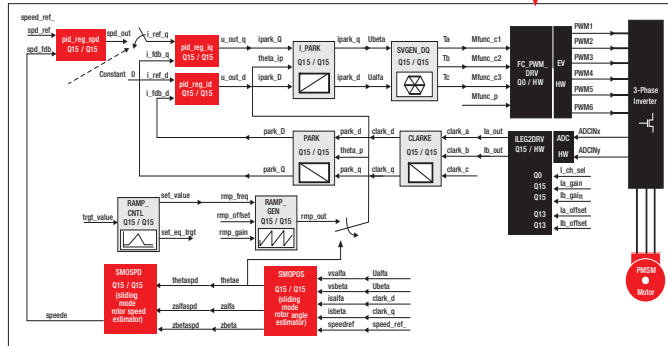
**Build Level 5:** Closed loop PID speed control



Build Level 1



Build Level 2 Build Level 3 and 4 (not shown)



Build Level 5

### Documentation

All systems come with:

- Incremental build software
- Step-by-step user's guide
- DMC control theory
- Screenshots
- Hardware hook-up
- Debug tips

All hardware example systems are open source, ready for you to insert into your design and include:

- Gerber files
- Schematics
- BOM
- Feedback and sensing circuitry
- Isolated JTAG

Motor	Technique	Type	Feedback
ACI	FOC	Speed & Torque	Tachometer
	FOC	Speed & Torque	Sensorless
BLDC	Trapezoidal	Speed	Half Effect
	Trapezoidal	Speed	Sensorless
	Sinusoidal	Speed	Half Effect
PMSM	FOC	Speed & Torque	Encoder
	FOC	Position	Encoder
	FOC	Speed & Torque	Sensorless
Stepper	Microstep	Position	Sensorless
Brushed	DirectDrive	Speed & Position	Encoder

Systems included or planned

### Motor types, control and feedback techniques

These system examples have been created across different motor types, control techniques and feedback methods.

### C2000 Digital Motor Control Gives You MORE

C2000 based motor control systems enable energy and cost savings throughout products

- Variable speed control → MORE efficient motors
- Field-oriented control → MORE efficient control
- Space vector PWM → MORE efficient power stage
- Sensor-less control → MORE cost effective
- Multi-axis control → MORE motors per controller
- Integrated digital PFC → MORE system functions
- Meeting IEC standards → MORE reliable and robust
- Broadest MCU portfolio → MORE products, one platform

**Applications: Digital Power** Full example systems have been built using the DPS library

**Multiple control methods and multiple topologies through modular software**

**Why go for digital power?**

**Reduces costs**

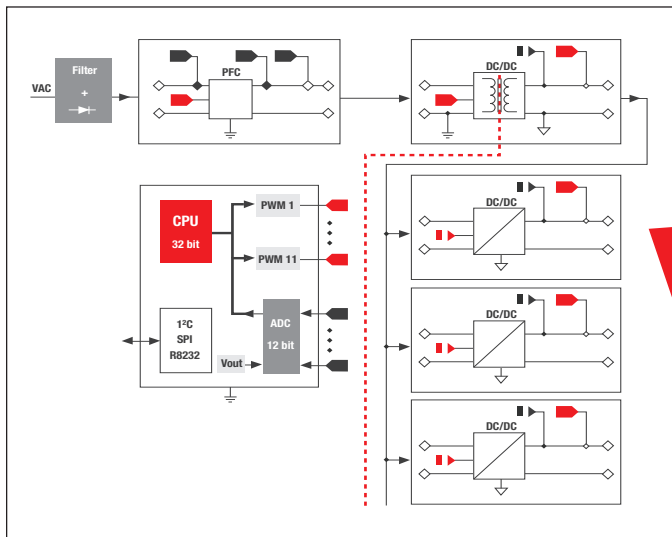
- Tunable platforms lead to new products quicker
- Calibration, better noise and temperature immunity
- Reduced board area and parts count

**Higher quality**

- Adaptive; efficiency across load range
- Flexibility through programmability
- Calibration at final functional test
- Less sensitive to drift and better noise immunity
- Parameter monitoring for continual quality improvement
- Proven concept in mature digital motor control market

**Higher reliability**

- Built-in supervision
- Intelligent diagnostics, failure prediction, reporting capability

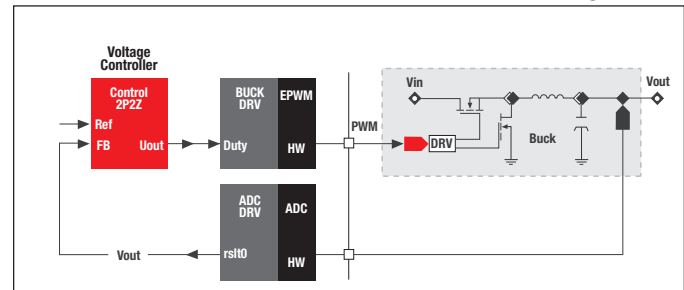


**Control Techniques**

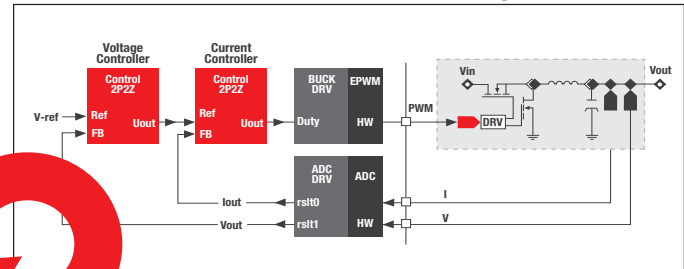
Programmable control techniques with performance and flexibility for personalized system management and product differentiation

- 2 Pole, 2 Zero
- 3 Pole, 3 Zero
- PI, PID
- Non-linear techniques
- Adaptive co-efficient sets
- Phase management
- Fault monitoring, clamping, dead-band adjustment
- Tunable efficiency across load and operating range

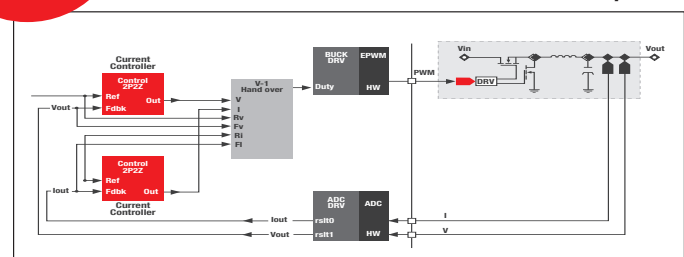
**Voltage mode**



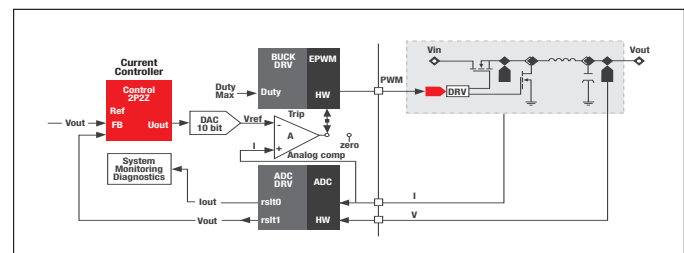
**Average current mode**



**Constant power**



**Peak / Over / CbC current mode**



**Control Topologies**

Flexible peripheral support, with DPS library of drivers for any power stage topology, including

- Synchronous buck: 1, 2, 3 phase interleaved
- Synchronous buck boost
- Power factor correction: 1, 2, 3 phase interleaved
- Half and full bridge, phase shifted and synch rectification
- Resonant

## Development Kits

C2000 development kits are designed to be modular and robust. As completely open source evaluation and development tools, users can modify both the hardware and software to best fit their needs.

### Hardware and software packages for every kit available in controlSUITE

Each C2000 development kit comes with complete software and hardware support. Regardless of whether you have a device evaluation kit (such as the controlSTICK or experimenter's kits) or a full application kit, controlSUITE contains everything you need to maximize the benefits of these kits.

Explore all C2000 development kits at

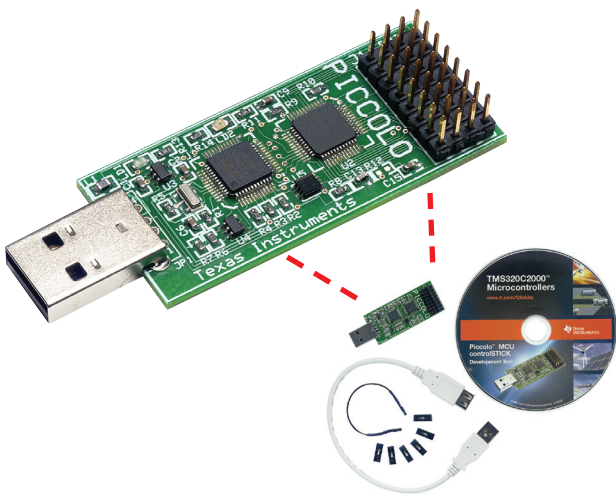
[www.ti.com/c2000tools](http://www.ti.com/c2000tools)

### C2000 Tools Platforms

#### **controlSTICK Platform**

As an entry-level evaluation kit, the controlSTICK represents a simple, stand-alone device that allows users to simply plug in the tool to learn the device and software. Features include:

- Simple stand-alone USB memory stick form factor evaluation tool
  - Piccolo F28027
  - Onboard USB JTAG emulation
  - Header pins provide access to most Piccolo pins
- 11 example projects explain Piccolo peripherals
- Jumpers and patch cords included for easy connectivity
- USB extension cable



#### **Hardware Package**

The hardware development kits are completely open-source. This includes the schematics, bill of materials, and layout/gerber files: everything you need to take the hardware kit and adapt it or add it to your application project.

#### **Software Package**

Each kit works out of the box and a complete software package is at your disposal:

- Examples and system framework
- Independent GUI allows instant evaluation

#### **controlCARD Platform**

With a standard DIM100 interface and identical pin-outs, evaluating or migrating between devices has never been easier. controlCARDS bring simplicity and compatibility, adding extra usability to C2000 tools.

- Pin-compatible daughter cards provide an easy method to evaluate multiple C2000 devices
- Standard DIM interface allows access to analog I/O, digital I/O, and JTAG signals
- Robust design
  - Noise filter at ADC input pins
  - Ground plane
  - Isolated UART communication
  - Supply pin decoupling
- All C2000 MCU life support included on card
- controlCARD can be added to any design by adding a DIM100 connector and a 5V supply
- Simple, small form factor for small prototype or production runs
- Multiple versions available starting at \$49





## Development Kits

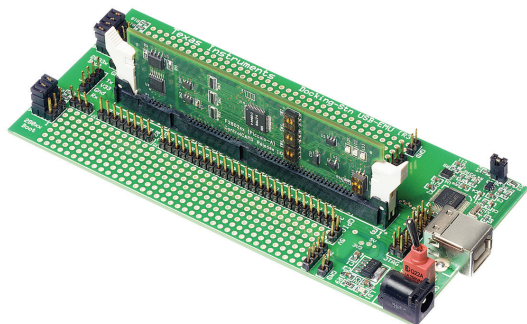
### controlCARD Based Device Evaluation Kits

Evaluation kits assist the users in learning C2000 devices

#### Experimenter's Kits

This full-featured kit brings access to all C2000 device pins. With an integrated prototyping area, the Experimenter's kit is a great tool for initial development or experimentation.

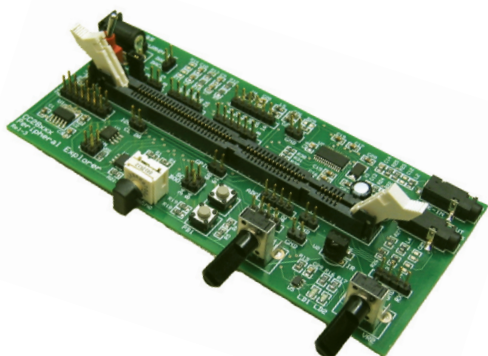
- Docking Station
  - Prototyping areas
  - Access to most controlCARD signals
  - 5V and 3.3V rails
  - On-board USB JTAG emulator
    - Excludes C28345 and C28346
  - Kits available for all controlCARDS



#### Peripheral Explorer Kit

The Peripheral Explorer Kit provides a simple way to learn and interact with all F28335 peripherals.

- Example projects to explain GPIO, ADC, PWM, Delfino DMA, SPI, I<sup>2</sup>C, and more
- EEPROM for SPI communication example
- On-board audio codec for high speed serial
- On-board USB JTAG emulator



### controlCARD Based Application Kits

Take full advantage of C2000's powerful core and peripherals with the application development kits. For beginners and experts alike, C2000 application kits demonstrate the full capabilities of digital control.

#### All application kits include:

- Open source, application example software
- Detailed lab style documentation
- Complete hardware documentation
- controlCARD and application baseboard included

#### High Voltage, DMC + PFC Developer's Kit

TMDSHVMTRPFCKIT – \$599



#### Sensorless FOC DMC + PFC Developer's Kit

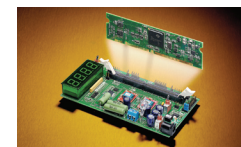
TMDS1MTRPFCKIT 1 Motor – \$369

TMDS2MTRPFCKIT 2 Motor – \$399



#### Digital Power Experimenter's Kit

TMDSDCDC2KIT – \$229



#### Digital Power Developer's Kit

TMDSDCDC8KIT – \$325



#### AC/DC Developer's Kit

TMDSACDCKIT – \$695



#### Resonant DC/DC Developer's Kit

TMDSRESDCKIT – \$229



#### Renewable Energy Developer's Kit

TMDSENRGYKIT – \$349



## Debug and Development Tools

The right software development tools are essential in any project. C2000's controlSUITE, along with C2000 partners, provide a complete ecosystem of debug and software tools.

### Code Composer Studio™ (CCS v4)

TI's Code Composer Studio Version 4 is a complete development environment. Based on the popular Eclipse IDE, CCSv4 represents a familiar and friendly interface with hundreds of plug-ins to support it.

controlSUITE includes a FREE, fully-featured version of Code Composer Studio v4 (for use with XDS100 emulators)

- Takes advantage of the real-time debug circuitry on C2000 devices and provides a powerful debugging environment.
- Real-time watch windows and graphs aid in software verification and debugging.
- Interrupt debugging is made possible by interrupt servicing even when the main program is halted.
- Includes many additional tools for C2000, such as the BIOS real-time operating system, an emulator, flash programmer, and more.

### Real-time Debug

Traditional debugging approaches (Stop Mode) require that programmers completely halt their system which stops all threads and prevents interrupts from being handled, which makes debugging extremely difficult if the system/application has real-time constraints. Real Time Mode debug support provides a better gauge of real-world system behavior by enabling programmers to halt and examine the application while allowing user specified time critical interrupts to be handled.

- Enables real-time, non-intrusive, continuous visibility into the way target applications operate in the real world
- Does not require use of target memory, special interrupts, or integration with the application
- Allows time critical interrupts to be marked for special treatment (high priority)
- Allows time critical interrupts to be serviced while background program execution is suspended
- Built into C2000 devices and Code Composer Studio
- Real-time refresh options

[www.ti.com/controlsuite](http://www.ti.com/controlsuite)

### BIOS Real-time Operating System (RTOS) v6

BIOS is TI's royalty-free real-time operating system for DSP processors, including C2000 and the C28x core. BIOS is a complete and powerful solution to OS and scheduling needs. BIOS requires no runtime license fees and is backed by Texas Instruments' worldwide training and support organizations. BIOS includes:

- Deterministic kernel with a preemptive scheduler
- Graphical or script-based OS configuration
- Graphical analysis and debug tools
- Interrupt dispatcher and interrupt management macros
- Multiple intertask communication services including semaphores, mailboxes and queues



Screenshots from BIOS v6 Code Composer Studio, showing task CPU load and task priorities

### Emulation Tools

JTAG emulation is a critical part of debugging and C2000 offers a variety of options to satisfy your emulation needs.

- Many evaluation kits have an on-board XDS100 emulator
- Stand-alone XDS100 emulators available for as low as \$79
- Faster, more capable XDS510 emulators available for as low as \$249
- Isolated emulators also available

### Partners and Developer Network

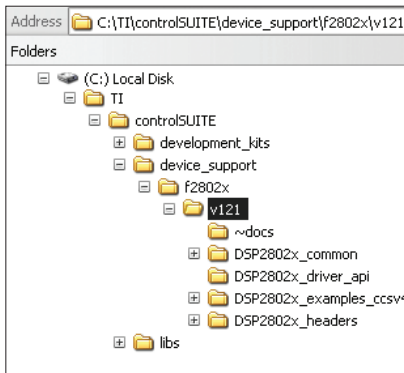
C2000's developer network includes partners that specialize in debug and software development tools. Vissim and Matlab are powerful tools that reduce programming to a visual process. Visit our Partners website for more information on these programs and more. [www.ti.com/c2000partners](http://www.ti.com/c2000partners)

## Getting Started

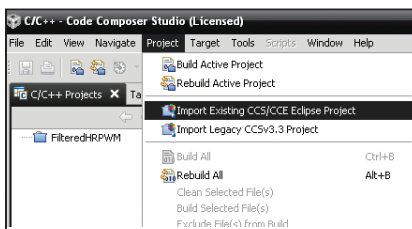
Depending on your experience and needs there are two options for getting started with controlSUITE. New users or users who want to learn about developing a system should start with an evaluation kit or application kit. Users who have used MCUs before, have extensive expertise in their application space, and are looking to take advantage of C2000's powerful C28x core and unique advanced peripherals should start from a device they have selected for their application.

### Start from the device

1. Start by downloading controlSUITE and selecting the device support package of your choice.



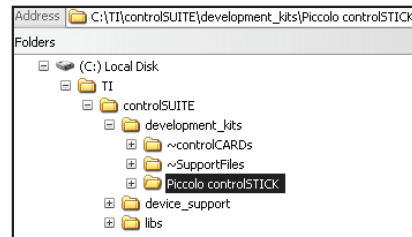
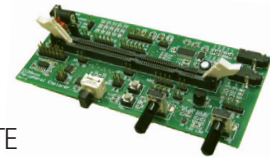
2. Find the corresponding directory holding the device support package. Inside, you'll find the actual software along with examples for CCS v4.
3. Using the quick start guide found in the “~docs” folder, you can quickly learn how to set up CCS v4, how to execute the examples, and how to incorporate the headers and sample code into a real project.



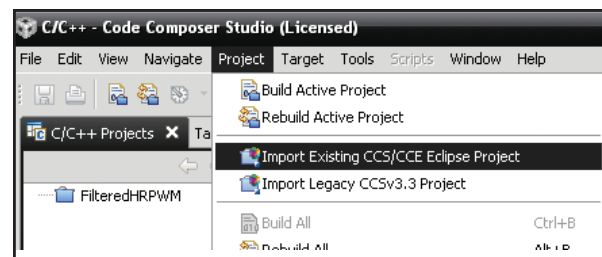
4. Import the CCSv4 example projects to see simple demonstrations of the device and peripherals, which can be used as a starting point. An example project exists for every aspect of the device.
5. Before moving to your application, take a look at the development tools that we have. Each comes with complete hardware and software packages, allowing you to reduce design or programming time.

### Start with a kit

1. Start by downloading controlSUITE and selecting the kit that you would like to use. The appropriate device support package and baseline framework software will automatically install as well.



2. Find the corresponding directory for the kit. Inside, you'll find the baseline framework along with specific examples and a hardware package including everything you need to understand the hardware – schematics, layouts, bill of materials, and more.
3. Run the GUI, connect to the board, and start playing with the variables to see how the system reacts to inputs.
4. When you're ready to dig into code, install and open Code Composer Studio v4. Import the example projects. Through experimentation and documentation, learn about the device and framework.



5. Start developing your own application right away. Use the framework and examples as an instant starting point.
6. Or, for users interested in specific applications, install the kit software and learn how the system is put together.

## Other Resources

C2000 software and support does not stop at controlSUITE. From online communities to hands-on training, C2000 offers a variety of resources for learning and development acceleration.

### Online Resources

- E2E community: Join fellow engineers at the TI E2E Community website, where you can find training videos, blogs, and an active forum to find answers to your questions. With a rapidly growing user base, the E2E community will serve as a nexus of all things TI. [community.ti.com](http://community.ti.com)
- Wiki: With large amounts of information and FAQs, the wiki is a great place to start finding answers to your questions. [www.tiexpressdsp.com](http://www.tiexpressdsp.com)
- C2000 website: [www.ti.com/c2000](http://www.ti.com/c2000)

### Training

- Hands-on training: Attend hands-on training labs and get face time with an instructor on C2000 devices and applications.
- Online training: Learn at your own pace. Watch online training videos and presentations from the comfort of your desk or bench.

[www.ti.com/training](http://www.ti.com/training)

### Events

- Come join our MCU Days and TI Technology Days in a location near you. Join lab sessions, lectures, and visit booths and exhibits to see C2000 in action.

## TI Worldwide Technical Support

### Internet

**TI Semiconductor Product Information Center Home Page**  
[support.ti.com](http://support.ti.com)

**TI Semiconductor KnowledgeBase Home Page**  
[support.ti.com/sc/knowledgebase](http://support.ti.com/sc/knowledgebase)

### Product Information Centers

#### Americas

Phone +1(972) 644-5580  
 Fax +1(972) 927-6377  
 Internet/Email [support.ti.com/sc/pic/americas.htm](http://support.ti.com/sc/pic/americas.htm)

#### Europe, Middle East, and Africa

Phone  
 European Free Call 00800-ASK-TEXAS  
 (00800 275 83927)  
 International +49 (0) 8161 80 2121  
 Russian Support +7 (4) 95 98 10 701

**Note:** The European Free Call (Toll Free) number is not active in all countries. If you have technical difficulty calling the free call number, please use the international number above.

Fax +1(49) (0) 8161 80 2045  
 Internet [support.ti.com/sc/pic/euro.htm](http://support.ti.com/sc/pic/euro.htm)

#### Japan

Fax	International +81-3-3344-5317
	Domestic 0120-81-0036
Internet/Email	International <a href="http://support.ti.com/sc/pic/japan.htm">support.ti.com/sc/pic/japan.htm</a>
	Domestic <a href="http://www.tij.co.jp/pic">www.tij.co.jp/pic</a>

#### Asia

Phone	International +91-80-41381665
	Domestic <a href="http://www.ti.com">Toll-Free Number</a>
	Australia 1-800-999-084
	China 800-820-8682
	Hong Kong 800-96-5941
	India 1-800-425-7888
	Indonesia 001-803-8861-1006
	Korea 080-551-2804
	Malaysia 1-800-80-3973
	New Zealand 0800-446-934
	Philippines 1-800-765-7404
	Singapore 800-886-1028
	Taiwan 0800-006800
	Thailand 001-800-886-0010
Fax	+886-2-2378-6808
Email	<a href="mailto:tiasia@ti.com">tiasia@ti.com</a>
	<a href="mailto:ti-china@ti.com">ti-china@ti.com</a>
Internet	<a href="http://support.ti.com/sc/pic/asia.htm">support.ti.com/sc/pic/asia.htm</a>

**Important Notice:** The products and services of Texas Instruments Incorporated and its subsidiaries described herein are sold subject to TI's standard terms and conditions of sale. Customers are advised to obtain the most current and complete information about TI products and services before placing orders. TI assumes no liability for applications assistance, customer's applications or product designs, software performance, or infringement of patents. The publication of information regarding any other company's products or services does not constitute TI's approval, warranty or endorsement thereof.

The platform bar, controlSUITE, C2000 and Code Composer Studio are trademarks of Texas Instruments.

All other trademarks are the property of their respective owners.

B010208



## Стандарт Электрон Связь

Мы молодая и активно развивающаяся компания в области поставок электронных компонентов. Мы поставляем электронные компоненты отечественного и импортного производства напрямую от производителей и с крупнейших складов мира.

Благодаря сотрудничеству с мировыми поставщиками мы осуществляем комплексные и плановые поставки широчайшего спектра электронных компонентов.

Собственная эффективная логистика и склад в обеспечивает надежную поставку продукции в точно указанные сроки по всей России.

Мы осуществляем техническую поддержку нашим клиентам и предпродажную проверку качества продукции. На все поставляемые продукты мы предоставляем гарантию .

Осуществляем поставки продукции под контролем ВП МО РФ на предприятия военно-промышленного комплекса России , а также работаем в рамках 275 ФЗ с открытием отдельных счетов в уполномоченном банке. Система менеджмента качества компании соответствует требованиям ГОСТ ISO 9001.

Минимальные сроки поставки, гибкие цены, неограниченный ассортимент и индивидуальный подход к клиентам являются основой для выстраивания долгосрочного и эффективного сотрудничества с предприятиями радиоэлектронной промышленности, предприятиями ВПК и научно-исследовательскими институтами России.

С нами вы становитесь еще успешнее!

### Наши контакты:

**Телефон:** +7 812 627 14 35

**Электронная почта:** [sales@st-electron.ru](mailto:sales@st-electron.ru)

**Адрес:** 198099, Санкт-Петербург,  
Промышленная ул, дом № 19, литера Н,  
помещение 100-Н Офис 331