

NGD18N45CLB

Ignition IGBT 18 Amps, 450 Volts

N-Channel DPAK

This Logic Level Insulated Gate Bipolar Transistor (IGBT) features monolithic circuitry integrating ESD and Over-Voltage clamped protection for use in inductive coil drivers applications. Primary uses include Ignition, Direct Fuel Injection, or wherever high voltage and high current switching is required.

Features

- Ideal for Coil-on-Plug Applications
- DPAK Package Offers Smaller Footprint for Increased Board Space
- Gate-Emitter ESD Protection
- Temperature Compensated Gate-Collector Voltage Clamp Limits Stress Applied to Load
- Low Threshold Voltage Interfaces Power Loads to Logic or Microprocessor Devices
- Low Saturation Voltage
- High Pulsed Current Capability
- Emitter Ballasting for Short-Circuit Capability
- This is a Pb-Free Device

MAXIMUM RATINGS ($T_J = 25^\circ\text{C}$ unless otherwise noted)

Rating	Symbol	Value	Unit
Collector-Emitter Voltage	V_{CES}	500	V_{DC}
Collector-Gate Voltage	V_{CER}	500	V_{DC}
Gate-Emitter Voltage	V_{GE}	18	V_{DC}
Collector Current-Continuous @ $T_C = 25^\circ\text{C}$ - Pulsed	I_C	18 50	A_{DC} A_{AC}
ESD (Human Body Model) $R = 1500 \Omega$, $C = 100 \text{ pF}$	ESD	8.0	kV
ESD (Machine Model) $R = 0 \Omega$, $C = 200 \text{ pF}$	ESD	400	V
Total Power Dissipation @ $T_C = 25^\circ\text{C}$ Derate above 25°C	P_D	115 0.77	Watts $\text{W}/^\circ\text{C}$
Operating and Storage Temperature Range	T_J, T_{stg}	-55 to +175	$^\circ\text{C}$

Stresses exceeding Maximum Ratings may damage the device. Maximum Ratings are stress ratings only. Functional operation above the Recommended Operating Conditions is not implied. Extended exposure to stresses above the Recommended Operating Conditions may affect device reliability.



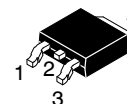
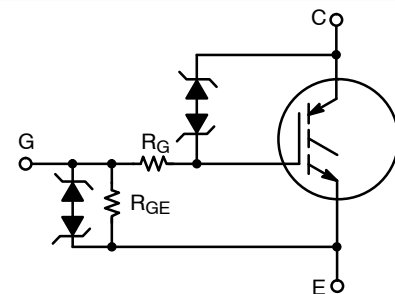
ON Semiconductor®

<http://onsemi.com>

18 AMPS

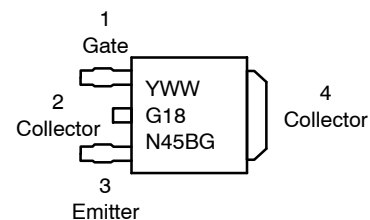
450 VOLTS

$V_{CE(on)} \leq 2.1 \text{ V @}$
 $I_C = 10 \text{ A}, V_{GE} \geq 4.5 \text{ V}$



**DPAK
CASE 369C
STYLE 7**

MARKING DIAGRAM



G18N45B = Device Code
Y = Year
WW = Work Week
G = Pb-Free Device

ORDERING INFORMATION

Device	Package	Shipping†
NGD18N45CLBT4G	DPAK (Pb-Free)	2500/Tape & Reel

†For information on tape and reel specifications, including part orientation and tape sizes, please refer to our Tape and Reel Packaging Specification Brochure, BRD8011/D.

NGD18N45CLB

UNCLAMPED COLLECTOR-TO-EMITTER AVALANCHE CHARACTERISTICS (Note 2)

Characteristic	Symbol	Value	Unit
Single Pulse Collector-to-Emitter Avalanche Energy	E_{AS}		mJ
$V_{CC} = 50\text{ V}$, $V_{GE} = 5.0\text{ V}$, Pk $I_L = 26.0\text{ A}$, $L = 1.0\text{ mH}$, Starting $T_J = 25^\circ\text{C}$		338	
$V_{CC} = 50\text{ V}$, $V_{GE} = 5.0\text{ V}$, Pk $I_L = 10.0\text{ A}$, $L = 8.4\text{ mH}$, Starting $T_J = 25^\circ\text{C}$		420	
$V_{CC} = 50\text{ V}$, $V_{GE} = 5.0\text{ V}$, Pk $I_L = 15.4\text{ A}$, $L = 2.0\text{ mH}$, Starting $T_J = 150^\circ\text{C}$		237	
$V_{CC} = 50\text{ V}$, $V_{GE} = 5.0\text{ V}$, Pk $I_L = 5.7\text{ A}$, $L = 15.2\text{ mH}$, Starting $T_J = 150^\circ\text{C}$		247	

MAXIMUM SHORT-CIRCUIT TIMES

Short Circuit Withstand Time – Test 1 (See Figure 17, 3 Pulses with 10 ms Period, $T_a = 105^\circ\text{C}$)	t_{sc1-1}	1000	μS
Short Circuit Withstand Time – Test 1 (See Figure 17, 3 Pulses with 10 ms Period, $T_a = 150^\circ\text{C}$)	t_{sc1-2}	800	μS
Short Circuit Withstand Time – Test 2 (See Figure 18, 3 Pulses with 10 ms Period, $T_a = 105^\circ\text{C}$)	t_{sc2-1}	5	ms
Short Circuit Withstand Time – Test 2 (See Figure 18, 3 Pulses with 10 ms Period, $T_a = 150^\circ\text{C}$)	t_{sc2-2}	1	ms

THERMAL CHARACTERISTICS

Thermal Resistance, Junction to Case	$R_{\theta JC}$	1.3	$^\circ\text{C/W}$
Thermal Resistance, Junction to Ambient	$R_{\theta JA}$ DPAK (Note 1)	95	$^\circ\text{C/W}$
Maximum Lead Temperature for Soldering Purposes, 1/8" from case for 5 seconds	T_L	275	$^\circ\text{C}$

ELECTRICAL CHARACTERISTICS

Characteristic	Symbol	Test Conditions	Temperature	Min	Typ	Max	Unit
----------------	--------	-----------------	-------------	-----	-----	-----	------

OFF CHARACTERISTICS (Note 2)

Collector-Emitter Clamp Voltage	BV_{CES}	$I_C = 2.0\text{ mA}$	$T_J = -40^\circ\text{C}$ to 150°C	430	455	470	V_{DC}
		$I_C = 10\text{ mA}$	$T_J = -40^\circ\text{C}$ to 150°C	440	475	500	
Zero Gate Voltage Collector Current	I_{CES}	$V_{CE} = 350\text{ V}$, $V_{GE} = 0\text{ V}$	$T_J = 25^\circ\text{C}$	-	0.5	20	μA_{DC}
			$T_J = 150^\circ\text{C}$	-	75	250	
			$T_J = -40^\circ\text{C}$	-	0.2	10	
		$V_{CE} = 15\text{ V}$, $V_{GE} = 0\text{ V}$	$T_J = 25^\circ\text{C}$	-	-	2.0	
Reverse Collector-Emitter Leakage Current	I_{ECS}	$V_{CE} = -24\text{ V}$	$T_J = 25^\circ\text{C}$	-	0.7	1.0	mA
			$T_J = 150^\circ\text{C}$	-	12	25	
			$T_J = -40^\circ\text{C}$	-	0.1	1.0	
Reverse Collector-Emitter Clamp Voltage	$BV_{CES(R)}$	$I_C = -75\text{ mA}$	$T_J = 25^\circ\text{C}$	24	27	30	V_{DC}
			$T_J = 150^\circ\text{C}$	26	29	33	
			$T_J = -40^\circ\text{C}$	23	26	29	
Gate-Emitter Clamp Voltage	BV_{GES}	$I_G = 5.0\text{ mA}$	$T_J = -40^\circ\text{C}$ to 150°C	11	13	15	V_{DC}
Gate-Emitter Leakage Current	I_{GES}	$V_{GE} = 10\text{ V}$	$T_J = -40^\circ\text{C}$ to 150°C	384	590	700	μA_{DC}
Gate Resistor	R_G	-	$T_J = -40^\circ\text{C}$ to 150°C	-	70	-	Ω
Gate Emitter Resistor	R_{GE}	-	$T_J = -40^\circ\text{C}$ to 150°C	10	16	26	k Ω

1. When surface mounted to an FR4 board using the minimum recommended pad size.

NGD18N45CLB

ELECTRICAL CHARACTERISTICS (continued)

Characteristic	Symbol	Test Conditions	Temperature	Min	Typ	Max	Unit
ON CHARACTERISTICS (Note 2)							
Gate Threshold Voltage	$V_{GE(th)}$	$I_C = 1.0 \text{ mA}$, $V_{GE} = V_{CE}$	$T_J = 25^\circ\text{C}$	1.1	1.56	1.9	V_{DC}
			$T_J = 150^\circ\text{C}$	0.75	1.08	1.4	
			$T_J = -40^\circ\text{C}$	1.2	1.75	2.1	
Collector-to-Emitter On-Voltage	$V_{CE(on)}$	$I_C = 7 \text{ A}$, $V_{GE} = 4.5 \text{ V}$	$T_J = -40^\circ\text{C}$ to 150°C	1.10	1.84	2.30	V
			$T_J = -40^\circ\text{C}$ to 150°C	1.15	1.89	2.35	
			$T_J = -40^\circ\text{C}$ to 150°C	1.20	1.93	2.50	
			$T_J = -40^\circ\text{C}$ to 150°C	1.45	2.07	2.65	
			$T_J = -40^\circ\text{C}$ to 150°C	1.50	2.13	2.80	
			$T_J = -40^\circ\text{C}$ to 150°C	1.55	2.19	2.85	
			$T_J = -40^\circ\text{C}$ to 150°C	-	0.65	1.00	
Threshold Temperature Coefficient (Negative)	-	-	-	-	3.5	-	mV/°C
Forward Transconductance	gfs	$V_{CE} = 5.0 \text{ V}$, $I_C = 6.0 \text{ A}$	$T_J = -40^\circ\text{C}$ to 150°C	6.0	14	25	Mhos

DYNAMIC CHARACTERISTICS (Note 2)

Input Capacitance	C_{ISS}	$V_{CC} = 25 \text{ V}$, $V_{GE} = 0 \text{ V}$ $f = 1.0 \text{ MHz}$	$T_J = -40^\circ\text{C}$ to 150°C	400	780	1000	pF
Output Capacitance	C_{OSS}			50	72	100	
Transfer Capacitance	C_{RSS}			4.0	6	10	

SWITCHING CHARACTERISTICS (Note 2)

Turn-Off Delay Time	$t_{d(off)}$	$V_{CC} = 300 \text{ V}$, $V_{GE} = 5 \text{ V}$ $R_G = 1.0 \text{ k}\Omega$, $R_L = 46 \Omega$	$T_J = 25^\circ\text{C}$	1.0	2.9	12	μSec
Fall Time	t_f	$V_{CC} = 300 \text{ V}$, $V_{GE} = 5 \text{ V}$ $R_G = 1.0 \text{ k}\Omega$, $R_L = 46 \Omega$	$T_J = 25^\circ\text{C}$	1.0	2.5	7.0	
Turn-On Delay Time	$t_{d(on)}$	$V_{CC} = 14 \text{ V}$, $V_{GE} = 5 \text{ V}$ $R_G = 1.0 \text{ k}\Omega$, $R_L = 1 \Omega$	$T_J = 25^\circ\text{C}$	0.1	0.42	1.4	μSec
Rise Time	t_r	$V_{CC} = 14 \text{ V}$, $V_{GE} = 5 \text{ V}$ $R_G = 1.0 \text{ k}\Omega$, $R_L = 1 \Omega$	$T_J = 25^\circ\text{C}$	1.0	2.5	9.0	

2. Electrical Characteristics at temperature other than 25°C, Dynamic and Switching characteristics are not subject to production testing.

NGD18N45CLB

TYPICAL ELECTRICAL CHARACTERISTICS (unless otherwise noted)

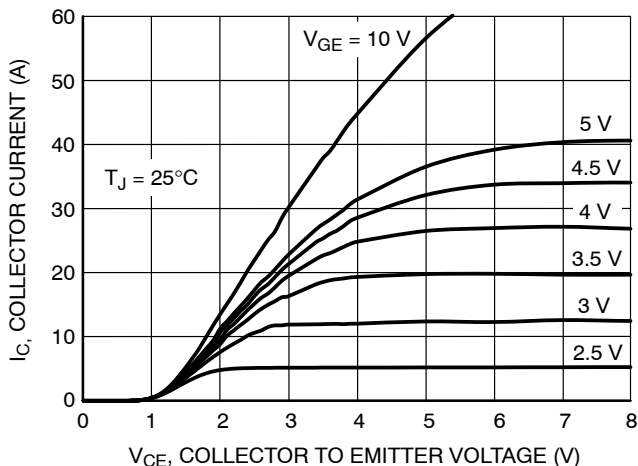


Figure 1. Output Characteristics

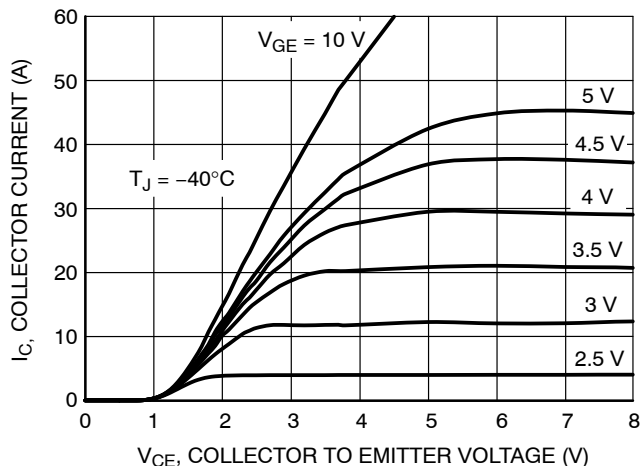


Figure 2. Output Characteristics

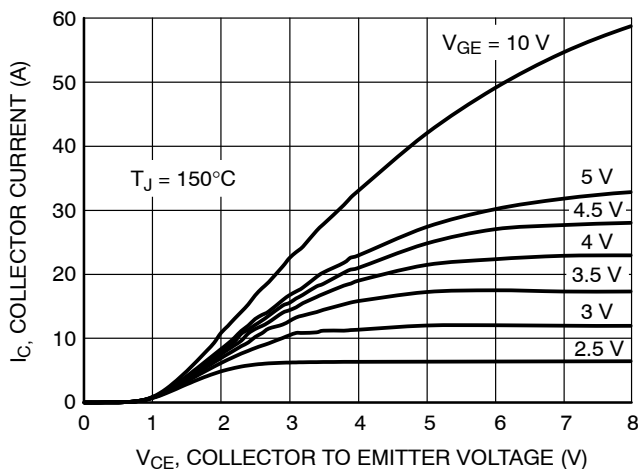


Figure 3. Output Characteristics

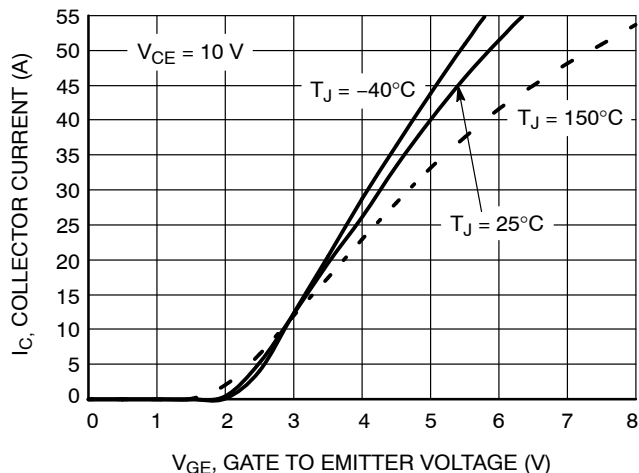


Figure 4. Transfer Characteristics

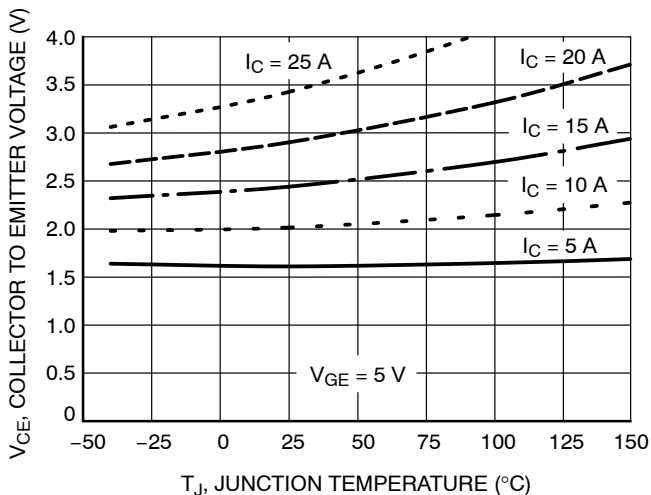


Figure 5. Collector-to-Emitter Saturation Voltage vs. Junction Temperature

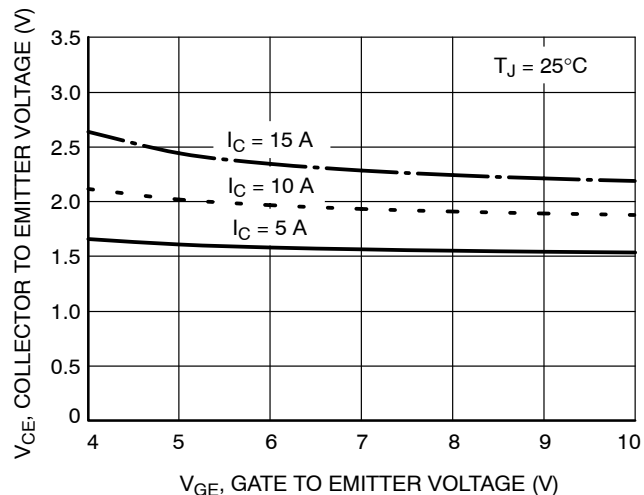


Figure 6. Collector-to-Emitter Voltage vs. Gate-to-Emitter Voltage

NGD18N45CLB

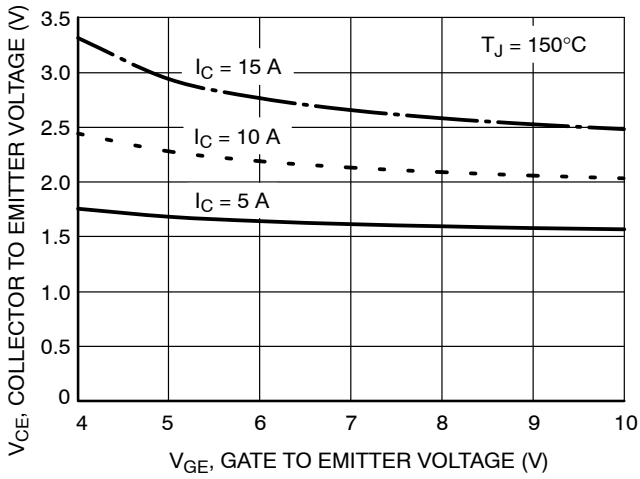


Figure 7. Collector-to-Emitter Voltage vs. Gate-to-Emitter Voltage

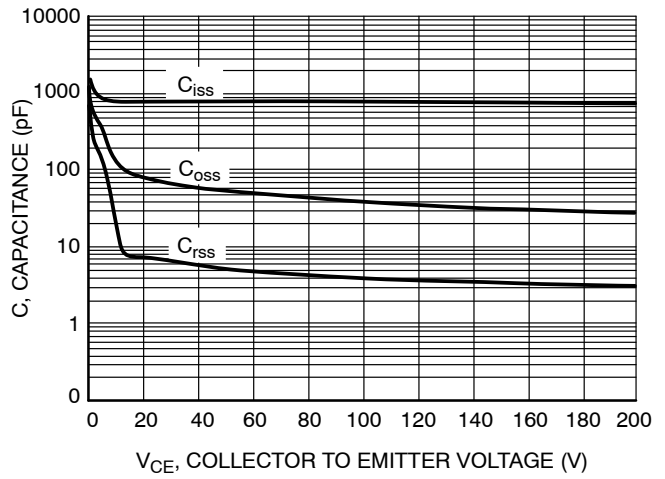


Figure 8. Capacitance Variation

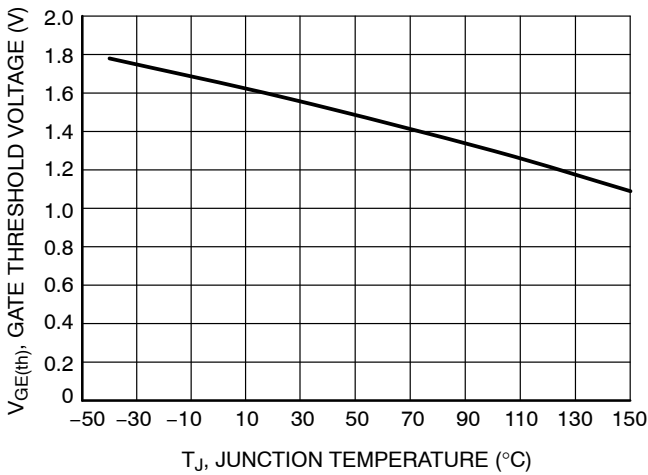


Figure 9. Gate Threshold Voltage vs. Junction Temperature

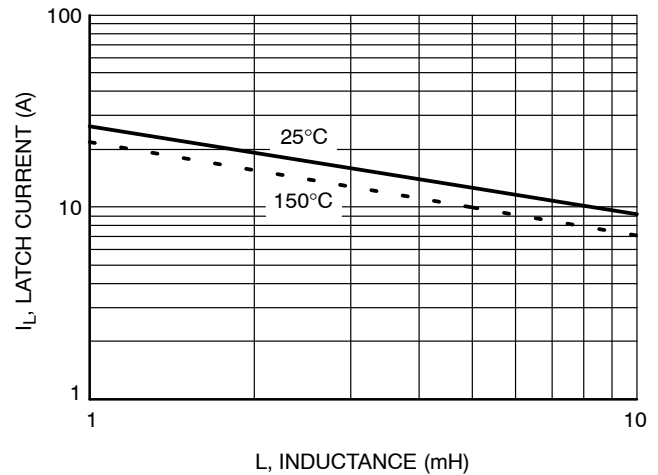


Figure 10. Minimum Open Secondary Latch Current vs. Inductance

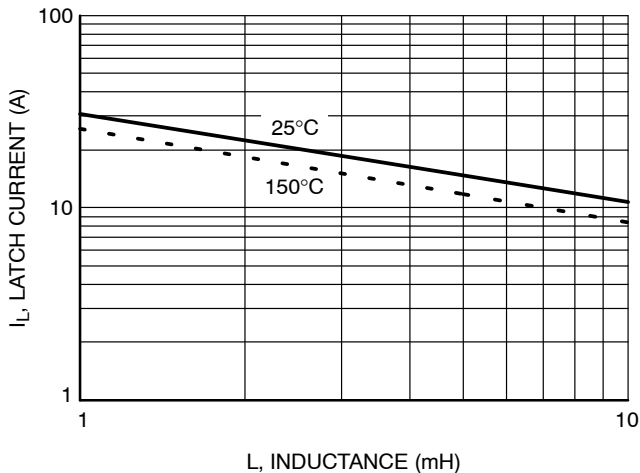


Figure 11. Typical Open Secondary Latch Current vs. Inductance

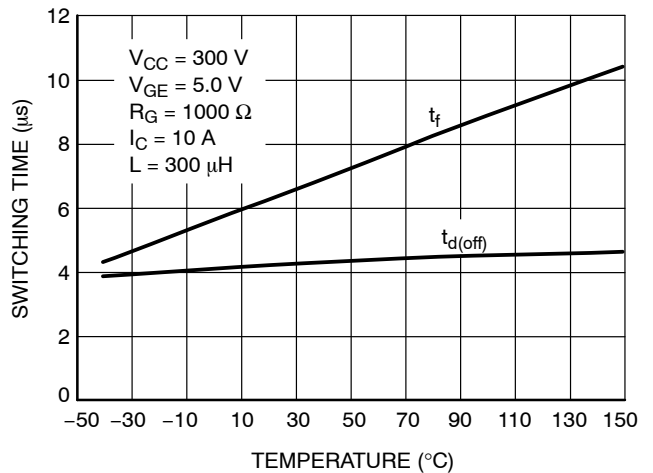


Figure 12. Inductive Switching Fall Time vs. Temperature

NGD18N45CLB

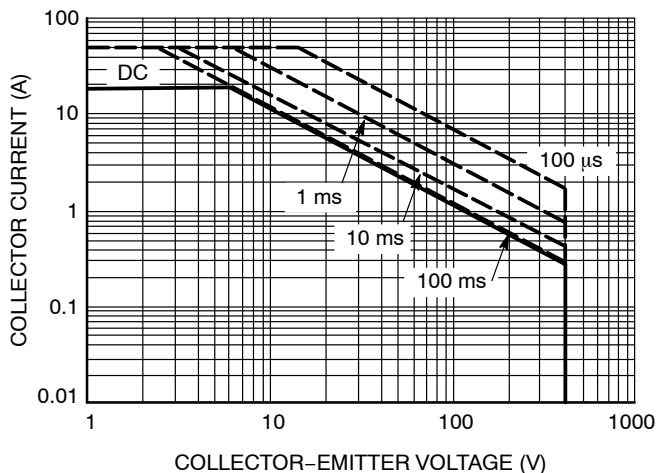


Figure 13. Single Pulse Safe Operating Area (Mounted on an Infinite Heatsink at $T_A = 25^\circ\text{C}$)

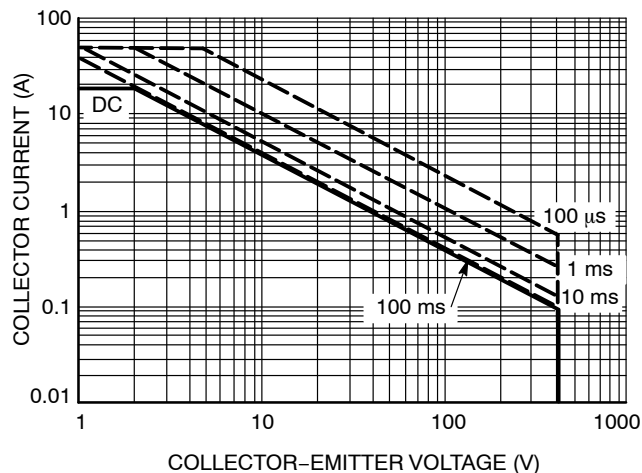


Figure 14. Single Pulse Safe Operating Area (Mounted on an Infinite Heatsink at $T_A = 125^\circ\text{C}$)

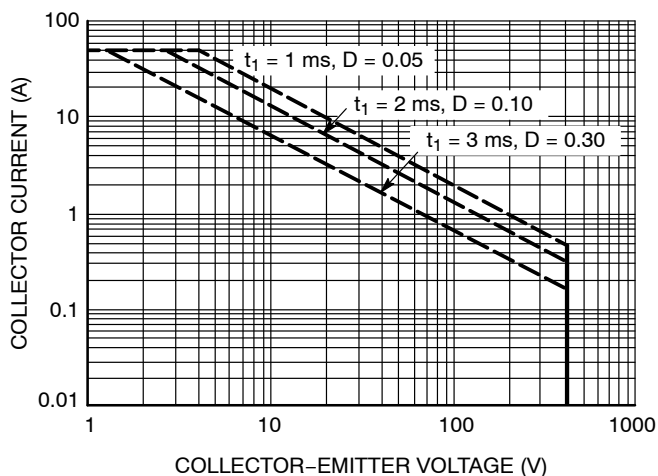


Figure 15. Pulse Train Safe Operating Area (Mounted on an Infinite Heatsink at $T_C = 25^\circ\text{C}$)

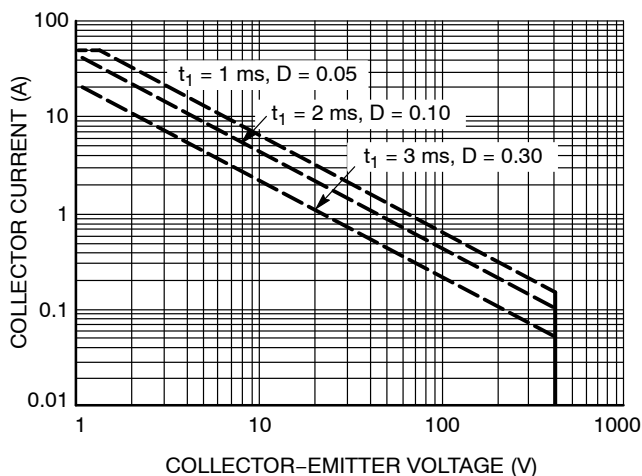


Figure 16. Pulse Train Safe Operating Area (Mounted on an Infinite Heatsink at $T_C = 125^\circ\text{C}$)

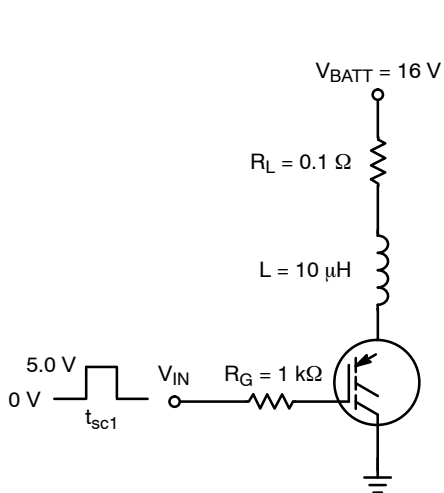


Figure 17. Circuit Configuration for Short Circuit Test #1

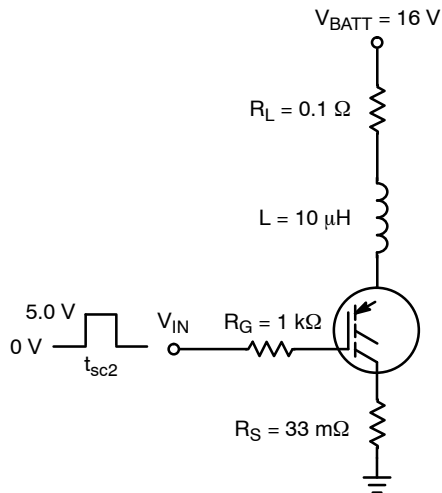
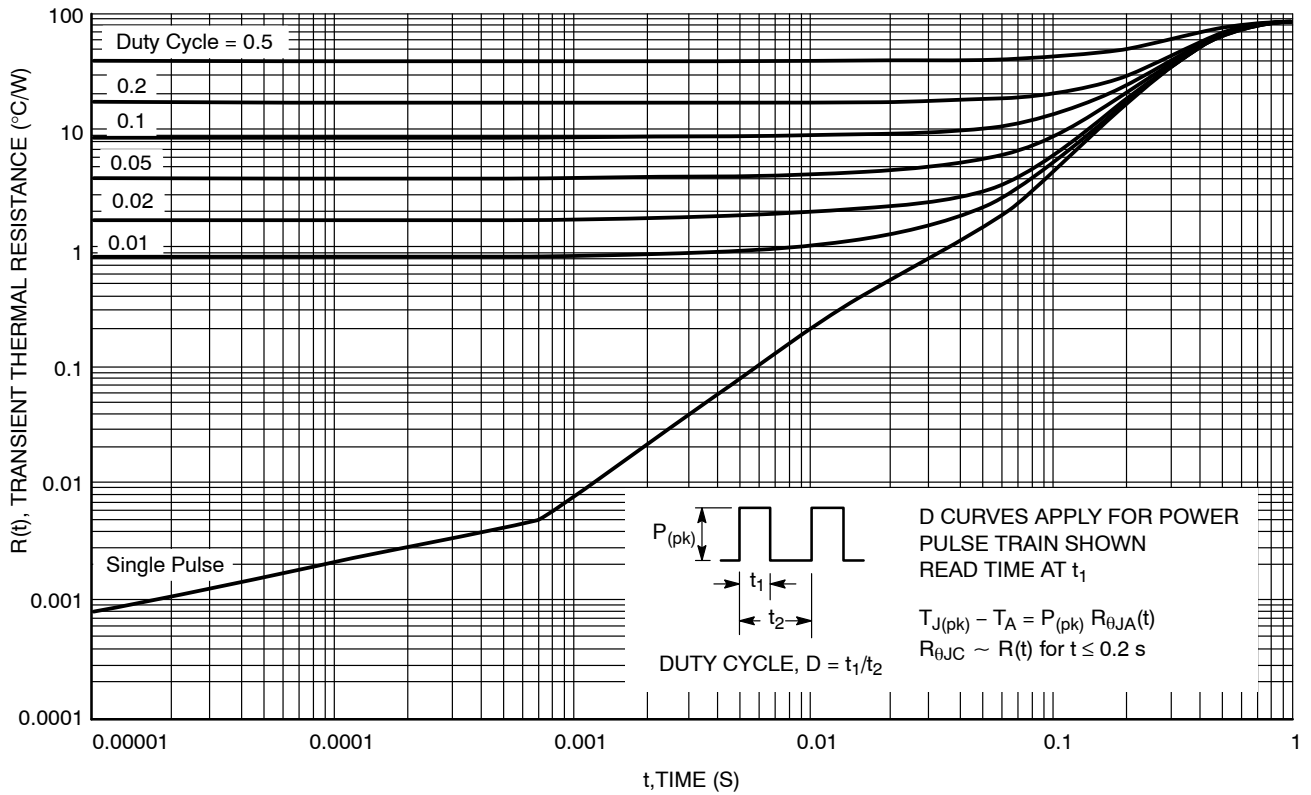


Figure 18. Circuit Configuration for Short Circuit Test #2

NGD18N45CLB

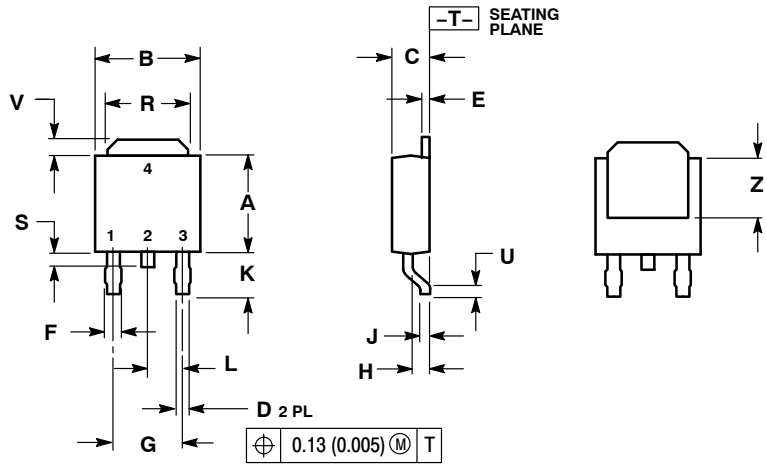


**Figure 19. Transient Thermal Resistance
(Non-normalized Junction-to-Ambient mounted on minimum pad area)**

NGD18N45CLB

PACKAGE DIMENSIONS

DPAK CASE 369C ISSUE C



NOTES:

1. DIMENSIONING AND TOLERANCING PER ANSI Y14.5M, 1982.
2. CONTROLLING DIMENSION: INCH.

DIM	INCHES		MILLIMETERS	
	MIN	MAX	MIN	MAX
A	0.235	0.245	5.97	6.22
B	0.250	0.265	6.35	6.73
C	0.086	0.094	2.19	2.38
D	0.027	0.035	0.69	0.88
E	0.018	0.023	0.46	0.58
F	0.037	0.045	0.94	1.14
G	0.180 BSC		4.58 BSC	
H	0.034	0.040	0.87	1.01
J	0.018	0.023	0.46	0.58
K	0.102	0.114	2.60	2.89
L	0.090 BSC		2.29 BSC	
R	0.180	0.215	4.57	5.45
S	0.025	0.040	0.63	1.01
U	0.020	---	0.51	---
V	0.035	0.050	0.89	1.27
Z	0.155	---	3.93	---

STYLE 7:

- PIN 1. GATE
2. COLLECTOR
3. EMITTER
4. COLLECTOR

ON Semiconductor and **ON** are registered trademarks of Semiconductor Components Industries, LLC (SCILLC). SCILLC owns the rights to a number of patents, trademarks, copyrights, trade secrets, and other intellectual property. A listing of SCILLC's product/patent coverage may be accessed at www.onsemi.com/site/pdf/Patent-Marking.pdf. SCILLC reserves the right to make changes without further notice to any products herein. SCILLC makes no warranty, representation or guarantee regarding the suitability of its products for any particular purpose, nor does SCILLC assume any liability arising out of the application or use of any product or circuit, and specifically disclaims any and all liability, including without limitation special, consequential or incidental damages. "Typical" parameters which may be provided in SCILLC data sheets and/or specifications can and do vary in different applications and actual performance may vary over time. All operating parameters, including "Typicals" must be validated for each customer application by customer's technical experts. SCILLC does not convey any license under its patent rights nor the rights of others. SCILLC products are not designed, intended, or authorized for use as components in systems intended for surgical implant into the body, or other applications intended to support or sustain life, or for any other application in which the failure of the SCILLC product could create a situation where personal injury or death may occur. Should Buyer purchase or use SCILLC products for any such unintended or unauthorized application, Buyer shall indemnify and hold SCILLC and its officers, employees, subsidiaries, affiliates, and distributors harmless against all claims, costs, damages, and expenses, and reasonable attorney fees arising out of, directly or indirectly, any claim of personal injury or death associated with such unintended or unauthorized use, even if such claim alleges that SCILLC was negligent regarding the design or manufacture of the part. SCILLC is an Equal Opportunity/Affirmative Action Employer. This literature is subject to all applicable copyright laws and is not for resale in any manner.

PUBLICATION ORDERING INFORMATION

LITERATURE FULFILLMENT:

Literature Distribution Center for ON Semiconductor
P.O. Box 5163, Denver, Colorado 80217 USA
Phone: 303-675-2175 or 800-344-3860 Toll Free USA/Canada
Fax: 303-675-2176 or 800-344-3867 Toll Free USA/Canada
Email: orderlit@onsemi.com

N. American Technical Support: 800-282-9855 Toll Free
USA/Canada
Europe, Middle East and Africa Technical Support:
Phone: 421 33 790 2910
Japan Customer Focus Center
Phone: 81-3-5817-1050

ON Semiconductor Website: www.onsemi.com

Order Literature: <http://www.onsemi.com/orderlit>

For additional information, please contact your local Sales Representative



Стандарт Электрон Связь

Мы молодая и активно развивающаяся компания в области поставок электронных компонентов. Мы поставляем электронные компоненты отечественного и импортного производства напрямую от производителей и с крупнейших складов мира.

Благодаря сотрудничеству с мировыми поставщиками мы осуществляем комплексные и плановые поставки широчайшего спектра электронных компонентов.

Собственная эффективная логистика и склад в обеспечивает надежную поставку продукции в точно указанные сроки по всей России.

Мы осуществляем техническую поддержку нашим клиентам и предпродажную проверку качества продукции. На все поставляемые продукты мы предоставляем гарантию .

Осуществляем поставки продукции под контролем ВП МО РФ на предприятия военно-промышленного комплекса России , а также работаем в рамках 275 ФЗ с открытием отдельных счетов в уполномоченном банке. Система менеджмента качества компании соответствует требованиям ГОСТ ISO 9001.

Минимальные сроки поставки, гибкие цены, неограниченный ассортимент и индивидуальный подход к клиентам являются основой для выстраивания долгосрочного и эффективного сотрудничества с предприятиями радиоэлектронной промышленности, предприятиями ВПК и научно-исследовательскими институтами России.

С нами вы становитесь еще успешнее!

Наши контакты:

Телефон: +7 812 627 14 35

Электронная почта: sales@st-electron.ru

Адрес: 198099, Санкт-Петербург,
Промышленная ул, дом № 19, литера Н,
помещение 100-Н Офис 331