



# TRIM TRIO<sup>®</sup> screw termination contacts



## Description

UTS, part of the well-known TRIM TRIO<sup>®</sup> interconnection system

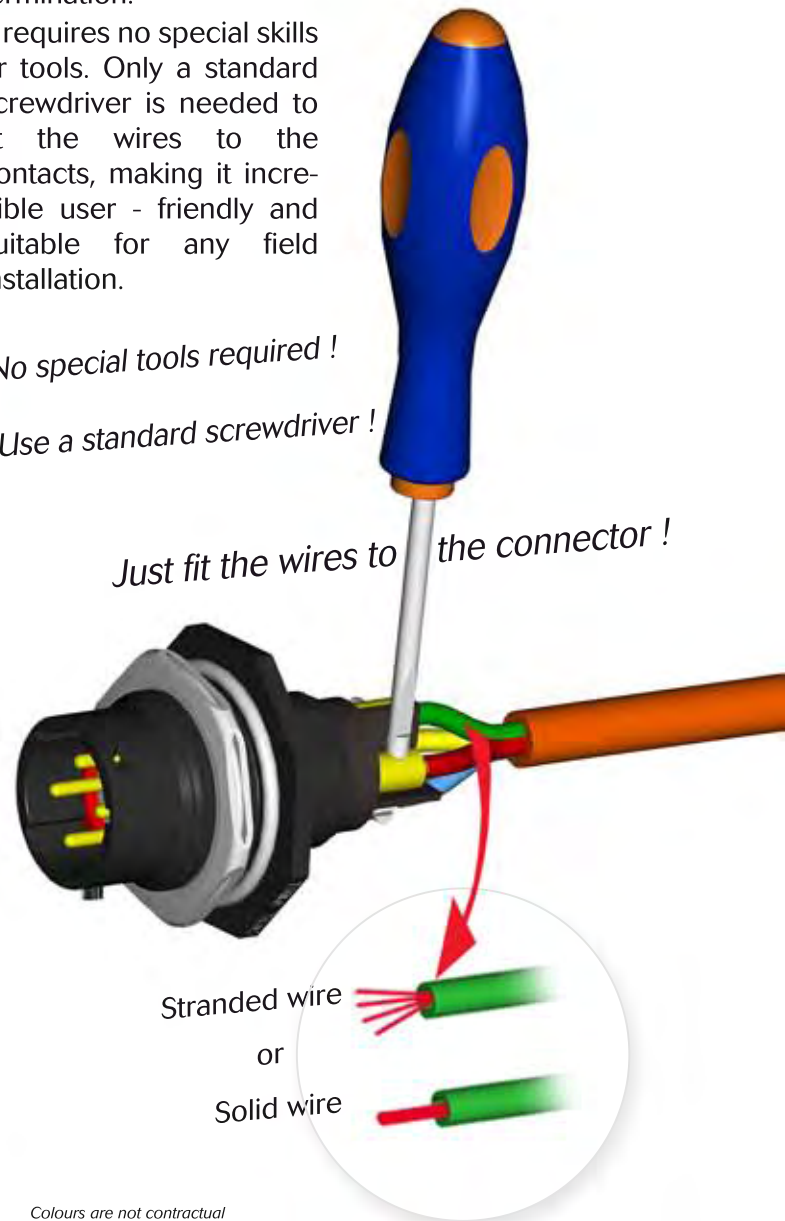
UTS series with screw termination contacts combines extreme sealing performance, rapid & secure connector mating with the ease of wire termination.

It requires no special skills or tools. Only a standard screwdriver is needed to fit the wires to the contacts, making it incredible user - friendly and suitable for any field installation.

*No special tools required !*

*Use a standard screwdriver !*

*Just fit the wires to the connector !*



## Features

- Only a standard screwdriver is needed to fit the wires to the contacts
- Contact accepting a wide range of wires
- Rapid mating with 1/3 turn with an audible & sensitive "click"
- Dynamic IP68/69K water protection
- Rapid & secure mating - min 250 mating cycles
- High salt spray resistance
- Male connectors have a grounding contact
- RoHS compliant

## Applications

- Tunnel fans
- Videosurveillance
- Traffic control
- Parking detection systems
- Meteorological measurement systems and there is more

***UTS with screw contact termination is perfect for field installations.***

**UTS : your first choice in waterproof connectors !**



**SOURIAU**  
Connection Technology



# TRIM TRIO<sup>®</sup> screw termination contacts

## Technical characteristics

### Mechanical

- Durability 250 cycles
- Thermal shock Per MIL-std 1344 method 1003
- Screw tightening torque 40 Ncm

### Electrical

- Current rating 13 Amp
- Insulation resistance 5000 MΩ min
- Test potential 2000 Vac
- Wire acceptance 0.5mm<sup>2</sup> to 2.5mm<sup>2</sup>
- Rated voltage 320 V class III, PD 2 per **VDE0110** (IEC 60664-1)
- Rated voltage per UL1977 type 2 500 V

### Environmental

- Operating temperature from -40°C to +105°C
- Flammability rating UL94V0 and NFF16102 level 2
- Sealing (mated) Dynamic IP68/69K
- UV resistant Sun and moisture as per ISO 4892
- Salt spray resistance 500 hours

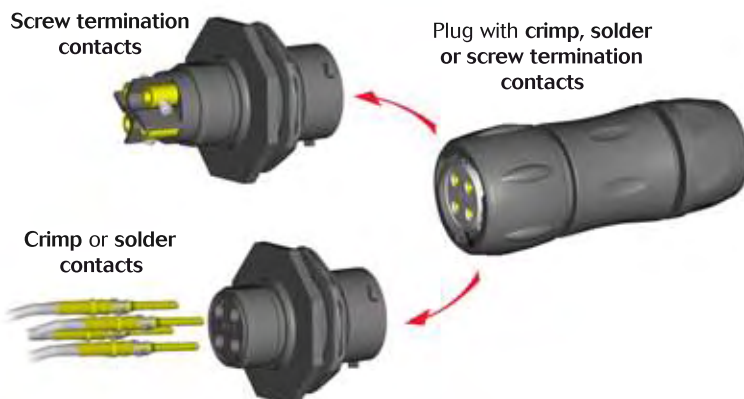
### Material

- Connectors + backshells Thermoplastic
- Contacts High conductive copper alloy  
Min 0.4µm gold plating
- RoHS compliant

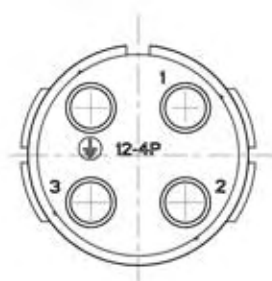


## Connector accommodation

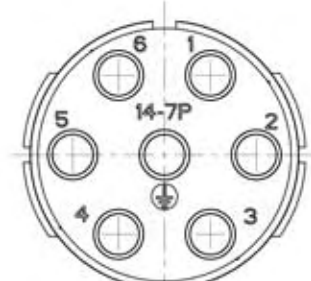
UTS connectors with screw termination contacts are fully intermateable and interchangeable with the UTS crimp and solder versions. (refer to UTS catalog or [www.souriau.com](http://www.souriau.com)).



## Available arrangements



Size 12-4  
3 + Grounding



Size 14-7  
6 + Grounding



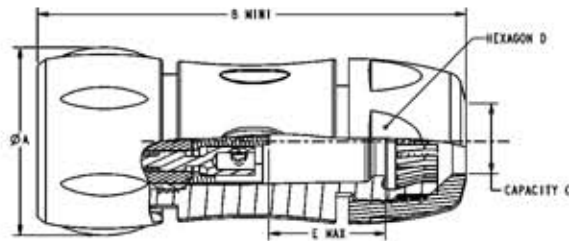
# TRIM TRIO<sup>®</sup> screw termination contacts

## Range presentation

### Plug

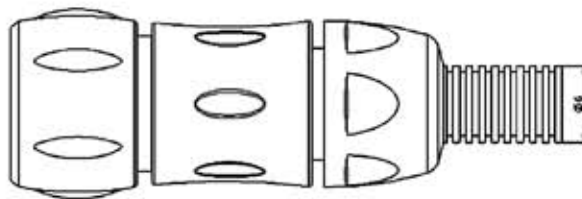


UTS6JC124PSCR (male)  
 UTS6JC124SSCR (female)  
 UTS6JC147PSCR (male)  
 UTS6JC147SSCR (female)



| Shell size                 | 12       | 14       |
|----------------------------|----------|----------|
| Layout                     | 4 (3+1)  | 7 (6+1)  |
| ØA                         | 29.7     | 34.6     |
| B min.                     | 66.7     | 71.5     |
| Capacity C / Standard      | 5.0/12.0 | 7.0/14.0 |
| Capacity C / Reducing seal | 3.0/9.0  | 5.0/12.0 |
| Hexagon D                  | 24.0     | 26.0     |
| E max. (female)*           | 21.0 max | 18.0 max |

\* Shell size 12 & 14  
 Note : all dimensions are in mm



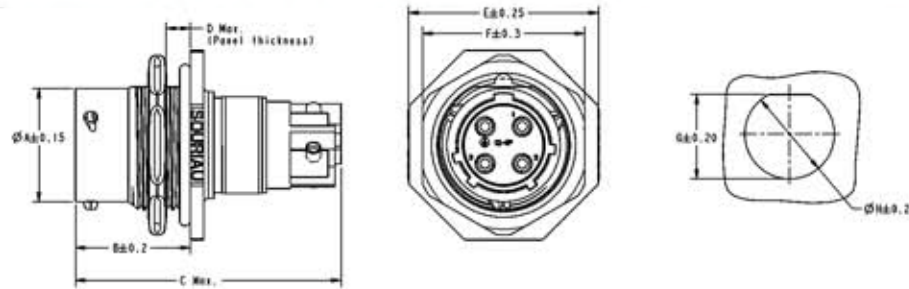
The standard plug and In-line receptacle can be fitted with a flexible conduit - not delivered by SOURIAU.

For all other requests, please consult the factory.

### Jam nut receptacle



UTS7124PSCR (male)  
 UTS7124SSCR (female)  
 UTS7147PSCR (male)  
 UTS7147SSCR (female)



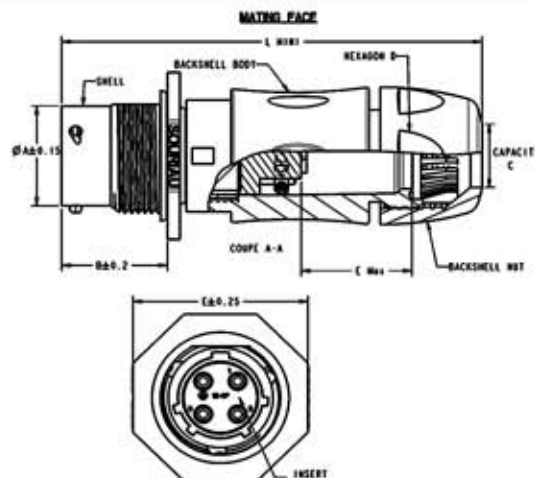
| Shell size | Layout  | A    | B    | C max | D max | E    | F    | G    | H    |
|------------|---------|------|------|-------|-------|------|------|------|------|
| 12         | 4 (3+1) | 19.0 | 19.3 | 46.5  | 3.2   | 31.8 | 27.0 | 21.2 | 22.5 |
| 14         | 7 (6+1) | 22.2 | 19.3 | 52.5  | 3.2   | 34.9 | 30.2 | 24.3 | 25.7 |

Note : all dimensions are in mm

### In-Line receptacle



UTS1JC124PSCR (male)  
 UTS1JC147PSCR (male)



| Shell size                 | 12       | 14       |
|----------------------------|----------|----------|
| Layout                     | 4 (3+1)  | 7 (6+1)  |
| ØA                         | 19.0     | 22.2     |
| B                          | 19.3     | 19.3     |
| L mini                     | 76.0     | 81.0     |
| E                          | 31.8     | 34.9     |
| Capacity C / Standard      | 5.0/12.0 | 7.0/14.0 |
| Capacity C / Reducing seal | 3.0/9.0  | 5.0/12.0 |
| Hexagon D                  | 24.0     | 26.0     |
| E max. (male)*             | 22.0 max | 22.0 max |

\* Shell size 12 & 14  
 Note : all dimensions are in mm



# TRIM TRIO<sup>®</sup> screw termination contacts

## Ordering information

|                     |  |     |   |    |    |   |   |     |
|---------------------|--|-----|---|----|----|---|---|-----|
| Connector family    | Receptacle   | UTS | 7 | -  | 12 | 4 | P | SCR |
|                     | Plug   | UTS | 6 | JC | 12 | 4 | S | SCR |
|                     | In line  | UTS | 1 | JC | 12 | 4 | P | SCR |
| Body variation      | 7 : Jam nut receptacle<br>6 : Cable plug<br>1 : In line receptacle |     |   |    |    |   |   |     |
| Backshell           | JC : IP68/69K backshell (only plug + free hanging)                 |     |   |    |    |   |   |     |
| Shell size          | 12 or 14   |     |   |    |    |   |   |     |
| Number of contacts  | 4 or 7   |     |   |    |    |   |   |     |
| Type of contacts    | P : male<br>S : female   |     |   |    |    |   |   |     |
| Contact termination | SCR : Screw termination  |     |   |    |    |   |   |     |

## Accessories

|   |   |  |
|---|---|--|
| <p><b>Receptacle sealing cap</b></p>  <p><b>Part numbers :</b><br/>Size 12 : UTS12DCG<br/>Size 14 : UTS14DCG</p> | <p><b>Plug sealing cap</b></p>  <p><b>Part numbers :</b><br/>Size 12 : UTS612DCG<br/>Size 14 : UTS614DCG</p> | <p><b>Colour coding rings</b></p>  <p><b>Part numbers for receptacle:</b><br/>Size 12 : UTS712CCR*<br/>Size 14 : UTS714CCR*<br/>* Add G for Green, Y for Yellow, Ro for Red</p> <p><b>Part numbers for plug:</b><br/>Size 12 : UTS612CCR*<br/>Size 14 : UTS614CCR*<br/>* Add G for Green, Y for Yellow, Ro for Red</p> |
|---|---|--|

**UTS : your first choice in waterproof connectors !**



For further information, visit our web site [www.trimtrio.com](http://www.trimtrio.com),  
or contact us at [contactindustry@souriau.com](mailto:contactindustry@souriau.com)



## Стандарт Электрон Связь

Мы молодая и активно развивающаяся компания в области поставок электронных компонентов. Мы поставляем электронные компоненты отечественного и импортного производства напрямую от производителей и с крупнейших складов мира.

Благодаря сотрудничеству с мировыми поставщиками мы осуществляем комплексные и плановые поставки широчайшего спектра электронных компонентов.

Собственная эффективная логистика и склад в обеспечивает надежную поставку продукции в точно указанные сроки по всей России.

Мы осуществляем техническую поддержку нашим клиентам и предпродажную проверку качества продукции. На все поставляемые продукты мы предоставляем гарантию .

Осуществляем поставки продукции под контролем ВП МО РФ на предприятия военно-промышленного комплекса России , а также работаем в рамках 275 ФЗ с открытием отдельных счетов в уполномоченном банке. Система менеджмента качества компании соответствует требованиям ГОСТ ISO 9001.

Минимальные сроки поставки, гибкие цены, неограниченный ассортимент и индивидуальный подход к клиентам являются основой для выстраивания долгосрочного и эффективного сотрудничества с предприятиями радиоэлектронной промышленности, предприятиями ВПК и научно-исследовательскими институтами России.

С нами вы становитесь еще успешнее!

### Наши контакты:

**Телефон:** +7 812 627 14 35

**Электронная почта:** [sales@st-electron.ru](mailto:sales@st-electron.ru)

**Адрес:** 198099, Санкт-Петербург,  
Промышленная ул, дом № 19, литера Н,  
помещение 100-Н Офис 331