



FineAdjust Applicator Applicator Tooling Specification Sheet Order No. 63901-6100



FEATURES

- Quick punch removal with the push of a button for fast and easy tooling change
- Applicator designed to industry standard mounting and shut height 135.80mm (5.346")
- Quick set-up time; plus the crimp height, track and feed adjustments can be set without removing the applicator from the press
- Fine adjustment allows users to achieve target with little effort by adjusting in increments of .015mm (.0006") for conductor crimp height and .063mm (.0025") for insulation height
- Independent adjustment rings allow users to quickly adjust the conductor or insulation crimp height without affecting each other
- Directly adapts to most automatic wire processing machines

SCOPE

Products: GET 0.64 mm (Global Electronic Technology) Connector System Socket Terminal, 0.50 - 0.75mm² and 18-20 AWG.

| Terminal Series No. | Terminal Order No. | Wire Size | | Insulation Diameter | | | | Strip Length | |
|---------------------|--------------------|-------------|-----------------|---------------------|------|----------|------|--------------|------|
| | | | | IPC/WHMA-A620 | | Terminal | | | |
| | | AWG | mm ² | mm | In. | mm | In. | mm | In. |
| 13933 | 1393366-2 | Metric Only | 0.50 | 1.60 | .063 | 1.60 | .063 | 4.40 | .073 |
| 98853 | 98853-0014 | Metric Only | 0.50 | 1.60 | .063 | 1.60 | .063 | 4.40 | .073 |

To achieve optimum IPC-A620 insulation crimps, use this insulation OD range.
Overall insulation OD specification for terminal

DEFINITION OF TERMS



The above terminal drawing is a generic terminal representation. It is not an image of a terminal listed in the scope.

CRIMP SPECIFICATION

| Terminal Series No. | Bell mouth | | Cut-off Tab Maximum | | * Conductor Brush | |
|---------------------|------------|------|---------------------|------|-------------------|-----------|
| | mm | In. | mm | In. | mm | In. |
| 13933 | 0.20 | .008 | 0.50 | .020 | 0.00-1.00 | .000-.040 |
| 98853 | 0.20 | .008 | 0.50 | .020 | 0.00-1.00 | .000-.040 |

* Wire brush must be flush or below top of Conductor Crimp.

| Terminal Series No. | Bend up | Bend down | Twist | Roll | Punch Width (Ref) | | | | Seam Seam shall not be open and no wire allowed out of the crimping area |
|---------------------|---------|-----------|--------|------|-------------------|------|------------|------|---|
| | | | | | Conductor | | Insulation | | |
| | Degree | | Degree | | mm | In | mm | In | |
| 13933 | 2.5 | 2.5 | 1.6 | 1.6 | 1.78 | .070 | 2.05 | .081 | |
| 98853 | 2.5 | 2.5 | 1.6 | 1.6 | 1.78 | .070 | 2.05 | .081 | |

After crimping, the crimp profiles should measure the following:

| Terminal Series No. | Wire Size | | Conductor | | | | Insulation Maximum | | | | Pull Force Minimum | |
|---------------------|-------------|-----------------|--------------|-----------|-------------|-----------|--------------------|------|--------------------|------|--------------------|-------|
| | | | Crimp Height | | Crimp Width | | Crimp Height | | Crimp Width (Ref.) | | | |
| | AWG | mm ² | mm | In. | mm | In. | mm | In. | mm | In. | N | Lb. |
| 13933 | Metric Only | 0.50 | 0.98-1.06 | .040-.042 | 1.78-1.93 | .070-.076 | 2.10 | .083 | 2.05 | .081 | 75.0 | 16.86 |
| 98853 | Metric Only | 0.50 | 0.98-1.06 | .040-.042 | 1.78-1.93 | .070-.076 | 2.10 | .083 | 2.05 | .081 | 75.0 | 16.86 |

■ Tool Qualification Notes:

1. Pull Force should be measured with no influence from the insulation crimp.
2. The above specifications are guidelines to an optimum crimp.

PARTS LIST

| FineAdjust Applicator 63901-6100 | | | | |
|--|-----------------|------------------------|--------------------------|-----------------|
| Item | Order No | Engineering No. | Description | Quantity |
| Perishable Tooling | | | | |
| | 63901-6170 | 63901-6170 | Tool Kit (All "Y" Items) | REF |
| 1 | 63901-6101 | 63901-6101 | Conductor Punch | 1 Y |
| 2 | 63901-6102 | 63901-6102 | Conductor Anvil | 1 Y |
| 3 | 63901-6103 | 63901-6103 | Insulation Punch | 1 Y |
| 4 | 63901-6104 | 63901-6104 | Insulation Anvil | 1 Y |
| 5 | 63901-6105 | 63901-6105 | Cut-Off Plunger | 1 Y |
| 6 | 63901-6106 | 63901-6106 | Front Plunger Retainer | 1 Y |
| Other Components | | | | |
| 7 | 11-18-4094 | 60709A111 | Feed Guide | 1 |
| 8 | 63443-0021 | 63443-0021 | Key | 1 |
| 9 | 63443-0061 | 63443-0061 | Wire stop | 1 |
| 10 | 63443-6009 | 63443-6009 | Rear Cover | 1 |
| 11 | 63600-3351 | 63600-3351 | Compression Spring | 1 |
| 12 | 63700-0539 | 63700-0539 | Cut-off Plunger Spring | 1 |
| 13 | 63867-3007 | 63867-3007 | Bottom Cap | 1 |
| 14 | 63901-6107 | 63901-6107 | Anvil Mount | 1 |
| 15 | 63901-6108 | 63901-6108 | Wire Hold Down | 1 |
| 16 | 63901-6109 | 63901-6109 | Front Plunger Striker | 1 |
| Frame | | | | |
| 17 | 63800-4901 | 63800-4901 | Top | 1 |
| 18 | 63801-3281 | 63801-3281 | Base | 1 |
| 19 | 63801-4650 | 63801-4650 | Track | 1 |
| Hardware | | | | |
| 20 | N/A | N/A | M3 by 6 Long SHCS | 2** |
| 21 | N/A | N/A | M4 by 8 Long Set Screw | 1** |
| 22 | N/A | N/A | M4 by 10 Long SHCS | 2** |
| 23 | N/A | N/A | M4 by 12 Long BHCS | 2** |
| 24 | N/A | N/A | M4 by 16 Long SHCS | 1** |
| 25 | N/A | N/A | M4 by 50 Long SHCS | 2** |
| 26 | N/A | N/A | M5 by 12 Long SHCS | 1** |
| 27 | N/A | N/A | 2mm by 8 Long Roll Pin | 1** |
| 28 | N/A | N/A | 3mm by 6 Long Roll Pin | 1** |
| 29 | N/A | N/A | #10-32 by 1/4" Long BHCS | 1** |
| ** Available from an industrial supply company such as MSC (1-800-645-7270). | | | | |

Assembly Drawing

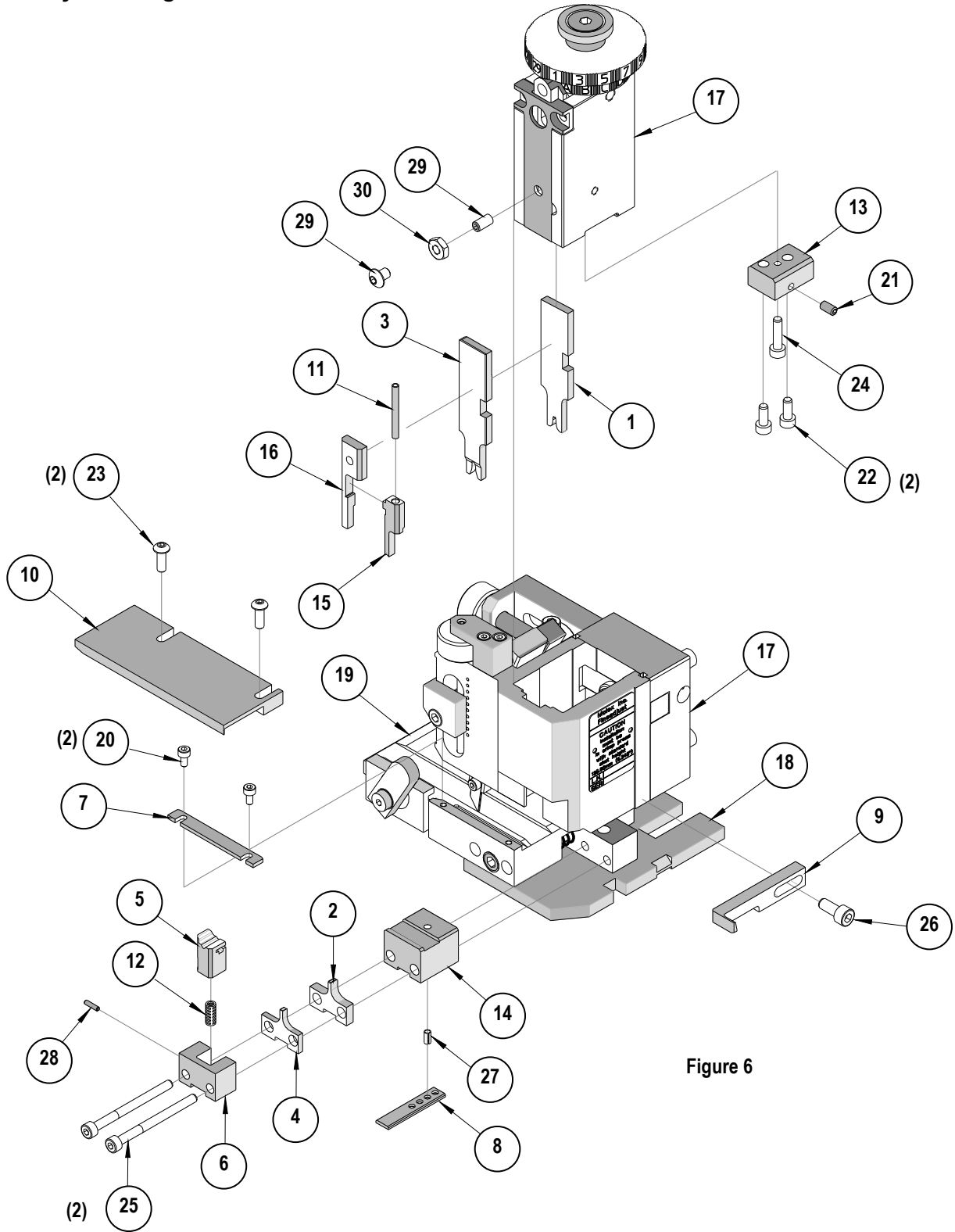


Figure 6

NOTES

1. Molex recommends an extra perishable tooling kit be maintained at your facility.
2. Verify tooling alignment by manually cycling the press and Applicator before crimping under power. Check that all screws are tight.
3. Slugs, Terminals, Dirt and Oil should be kept clear of work area.
4. Wear safety glasses at all times.
5. For recommended maintenance refer to the FineAdjust Manual.

CAUTION: This applicator should only be used in a press with a shut height of 135.80 mm (5.346"). Tooling damage could result at a lower setting.

CAUTION: To prevent injury never operate this Applicator without the guards supplied with the press or wire-processing machine in place. Reference the press or wire processing manufacturer's instruction manual.

CAUTION: Molex crimp specifications are valid only when used with Molex terminals, applicators and tooling.

Americas Headquarters
Lisle, Illinois 60532 U.S.A.
1-800-78MOLEX
amerinfo@molex.com

Far East North Headquarters
Yamato, Kanagawa, Japan
81-462-65-2324
feninfo@molex.com

Far East South Headquarters
Jurong, Singapore
65-6-268-6868
fesinfo@molex.com

European Headquarters
Munich, Germany
49-89-413092-0
eurinfo@molex.com

Corporate Headquarters
2222 Wellington Ct.
Lisle, IL 60532 U.S.A.
630-969-4550
Fax: 630-969-1352

Visit our Web site at <http://www.molex.com>



Стандарт Электрон Связь

Мы молодая и активно развивающаяся компания в области поставок электронных компонентов. Мы поставляем электронные компоненты отечественного и импортного производства напрямую от производителей и с крупнейших складов мира.

Благодаря сотрудничеству с мировыми поставщиками мы осуществляем комплексные и плановые поставки широчайшего спектра электронных компонентов.

Собственная эффективная логистика и склад в обеспечивает надежную поставку продукции в точно указанные сроки по всей России.

Мы осуществляем техническую поддержку нашим клиентам и предпродажную проверку качества продукции. На все поставляемые продукты мы предоставляем гарантию .

Осуществляем поставки продукции под контролем ВП МО РФ на предприятия военно-промышленного комплекса России , а также работаем в рамках 275 ФЗ с открытием отдельных счетов в уполномоченном банке. Система менеджмента качества компании соответствует требованиям ГОСТ ISO 9001.

Минимальные сроки поставки, гибкие цены, неограниченный ассортимент и индивидуальный подход к клиентам являются основой для выстраивания долгосрочного и эффективного сотрудничества с предприятиями радиоэлектронной промышленности, предприятиями ВПК и научно-исследовательскими институтами России.

С нами вы становитесь еще успешнее!

Наши контакты:

Телефон: +7 812 627 14 35

Электронная почта: sales@st-electron.ru

Адрес: 198099, Санкт-Петербург,
Промышленная ул, дом № 19, литера Н,
помещение 100-Н Офис 331