



# ISL9R1560P2\_F085

## 15A, 600V Stealth Rectifier

### Features

- High Speed Switching ( $t_{rr}=30\text{ns(Typ.)}$  @  $I_F=15\text{A}$ )
- Low Forward Voltage ( $V_F=2.2\text{V(Max.)}$  @  $I_F=15\text{A}$ )
- Avalanche Energy Rated
- AEC-Q101 Qualified

### Applications

- Automotive DCDC Converter
- Automotive On Board Charger
- Switching Power Supply
- Power Switching Circuits

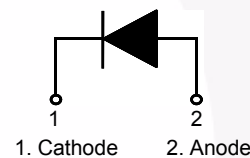
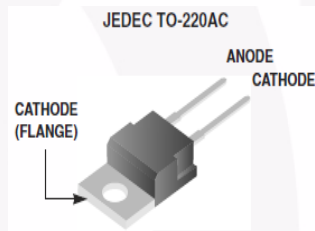
### Max Ratings (600V, 15A)

The ISL9R1560P2\_F085 is a Stealth™ diode with soft recovery characteristics ( $t_{rr} < 30\text{ns}$ ). It has a low forward-voltage drop and is of silicon nitride passivated, ion-implanted, epitaxial construction.

This device is intended for use as a freewheel/clamping diode in various automotive switching power supplies and other power switching applications.

Its low stored charge as well as Stealth™ and soft recovery characteristics minimize ringing and electrical noise while reduce the overall power loss.

### Pin Assignments



### Absolute Maximum Ratings $T_C = 25^\circ\text{C}$ unless otherwise noted

| Symbol         | Parameter  | Ratings      | Units            |
|----------------|--|--------------|------------------|
| $V_{RRM}$      | Peak Repetitive Reverse Voltage                              | 600          | V                |
| $V_{RWM}$      | Working Peak Reverse Voltage                                 | 600          | V                |
| $V_R$          | DC Blocking Voltage  | 600          | V                |
| $I_{F(AV)}$    | Average Rectified Forward Current @ $T_C = 25^\circ\text{C}$ | 15           | A                |
| $I_{FSM}$      | Non-repetitive Peak Surge Current (Halfwave 1 Phase 50Hz)    | 45           | A                |
| $E_{AVL}$      | Avalanche Energy (1A, 40mH)                                  | 20           | mJ               |
| $T_J, T_{STG}$ | Operating Junction and Storage Temperature                   | - 55 to +175 | $^\circ\text{C}$ |

### Thermal Characteristics $T_C = 25^\circ\text{C}$ unless otherwise noted

| Symbol          | Parameter                                       | Max  | Units              |
|-----------------|---|------|--------------------|
| $R_{\theta JC}$ | Maximum Thermal Resistance, Junction to Case    | 0.93 | $^\circ\text{C/W}$ |
| $R_{\theta JA}$ | Maximum Thermal Resistance, Junction to Ambient | 62   | $^\circ\text{C/W}$ |

### Package Marking and Ordering Information

| Device Marking | Device           | Package  | Tube | Quantity |
|----------------|------------------|----------|------|----------|
| ISL9R1560P2    | ISL9R1560P2_F085 | TO-220AC | -    | 50       |

**Electrical Characteristics**  $T_C = 25^\circ\text{C}$  unless otherwise noted

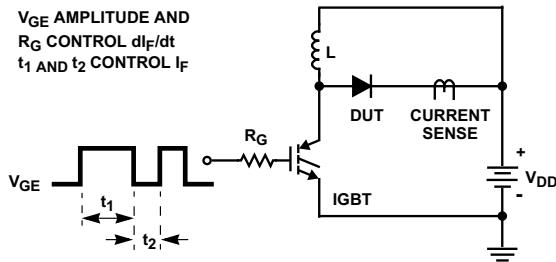
| Symbol     | Parameter                     | Conditions   | Min.                      | Typ. | Max  | Units |               |
|------------|-------------------------------|--|---------------------------|------|------|-------|---------------|
| $I_R$      | Instantaneous Reverse Current | $V_R = 600\text{V}$  | $T_C = 25^\circ\text{C}$  | -    | -    | 100   | $\mu\text{A}$ |
|            |                               |  | $T_C = 175^\circ\text{C}$ | -    | -    | 1000  | $\mu\text{A}$ |
| $V_{FM}^1$ | Instantaneous Forward Voltage | $I_F = 15\text{A}$   | $T_C = 25^\circ\text{C}$  | -    | 1.65 | 2.2   | V             |
|            |                               |  | $T_C = 175^\circ\text{C}$ | -    | 1.24 | 1.7   | V             |
| $t_{rr}^2$ | Reverse Recovery Time         | $I_F = 1\text{A}, di/dt = 200\text{A}/\mu\text{s}, V_R = 390\text{V}$  | $T_C = 25^\circ\text{C}$  | -    | 22   | 30    | ns            |
|            |                               |  | $T_C = 175^\circ\text{C}$ | -    | 127  | -     | ns            |
| $t_a$      | Reverse Recovery Time         | $I_F = 15\text{A}, di/dt = 200\text{A}/\mu\text{s}, V_R = 390\text{V}$ | -                         | 17   | -    | ns    |               |
| $t_b$      | Reverse Recovery Time         | $I_F = 15\text{A}, di/dt = 200\text{A}/\mu\text{s}, V_R = 390\text{V}$ | -                         | 13   | -    | ns    |               |
| $Q_{rr}$   | Reverse Recovery Charge       | $I_F = 15\text{A}, di/dt = 200\text{A}/\mu\text{s}, V_R = 390\text{V}$ | -                         | 48   | -    | nC    |               |

**Notes:**

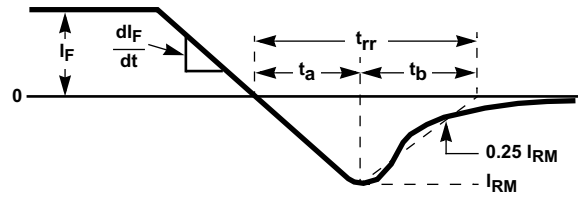
1. Pulse : Test Pulse width =  $300\mu\text{s}$ , Duty Cycle = 2%
2. Guaranteed by design

**Test Circuit and Waveforms**

**$t_{rr}$  Test Circuit**

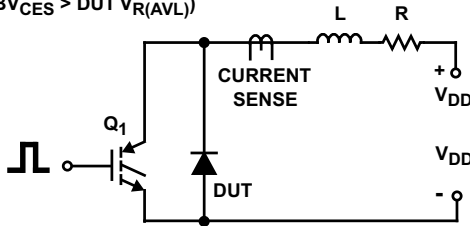


**$t_{rr}$  Waveforms and Definitions**

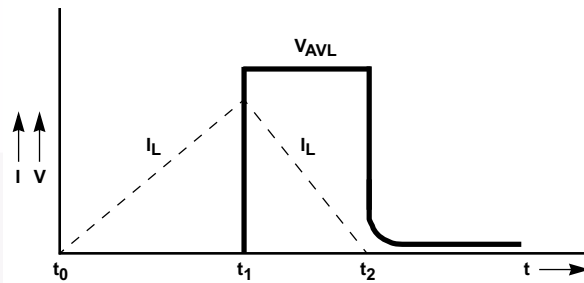


**Avalanche Energy Test Circuit**

$I = 1\text{A}$   
 $L = 40\text{mH}$   
 $R < 0.1\Omega$   
 $E_{AVL} = 1/2LI^2 [V_{R(AVL)}/(V_{R(AVL)} - V_{DD})]$   
 $Q_1 = \text{IGBT (} BV_{CES} > \text{DUT } V_{R(AVL)} \text{)}$



**Avalanche Current and Voltage Waveforms**



## Typical Performance Characteristics

Figure 1. Typical Forward Voltage Drop vs. Forward Current

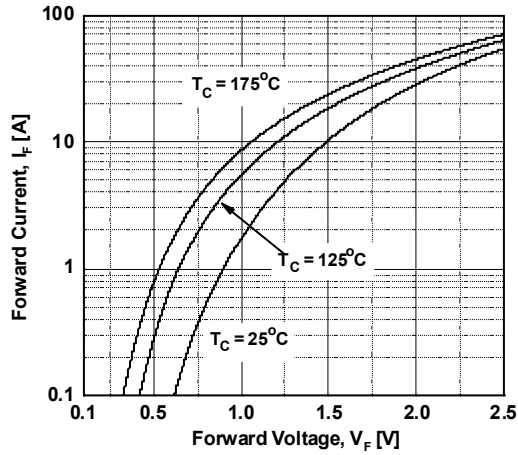


Figure 2. Typical Reverse Current vs. Reverse Voltage

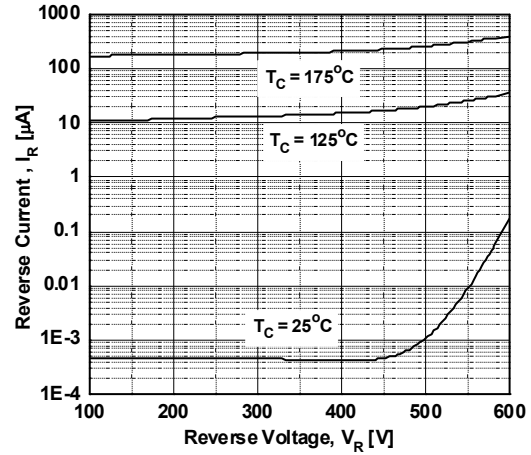


Figure 3. Typical Junction Capacitance

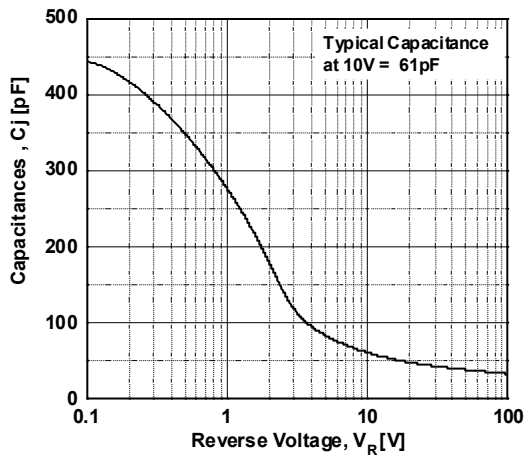


Figure 4. Typical Reverse Recovery Time vs. di/dt

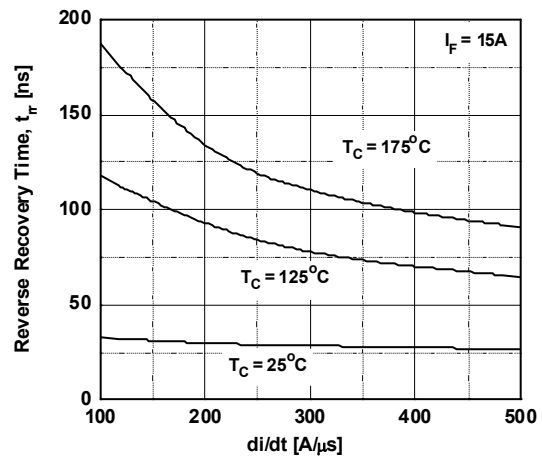


Figure 5. Typical Reverse Recovery Current vs. di/dt

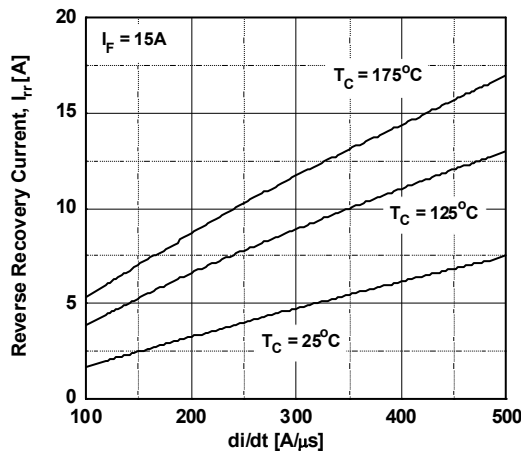
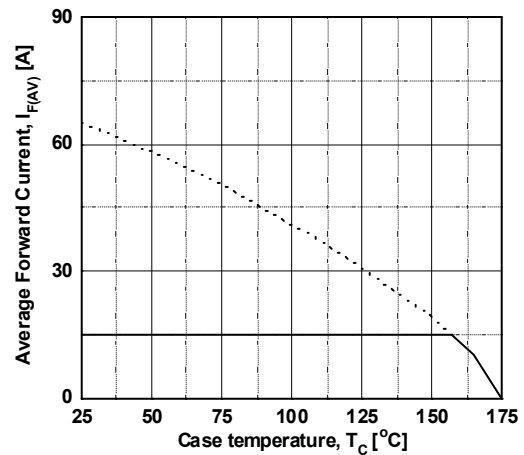


Figure 6. Forward Current Derating Curve



Typical Performance Characteristics (Continued)

Figure 7. Reverse Recovery Charge

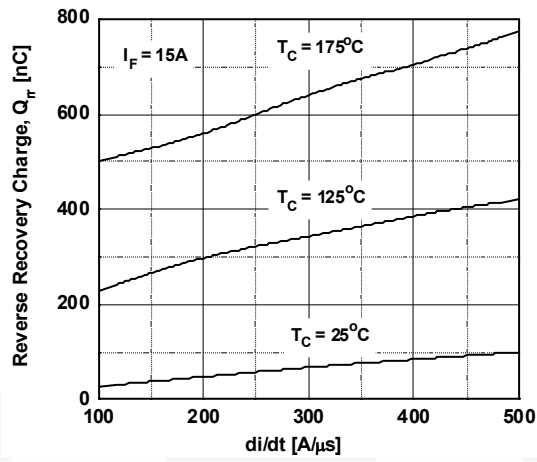
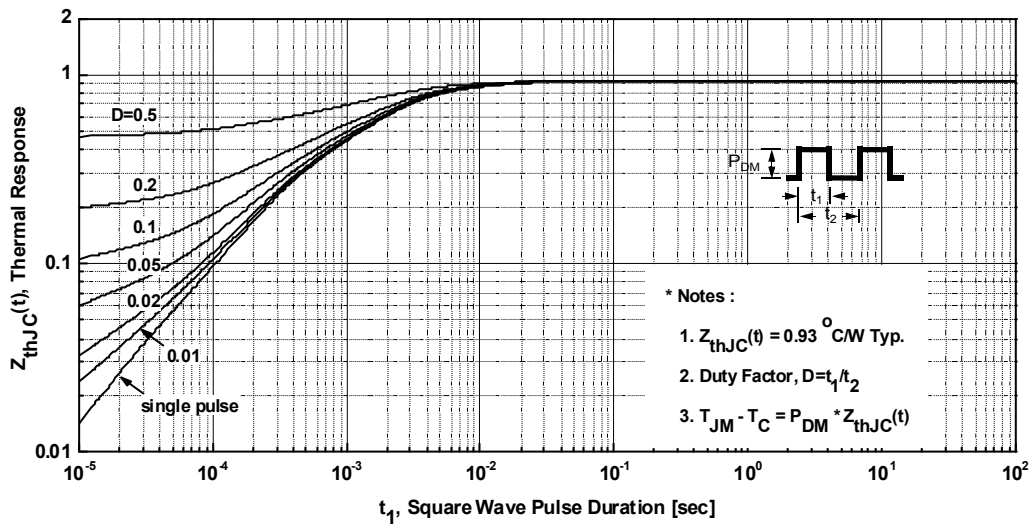
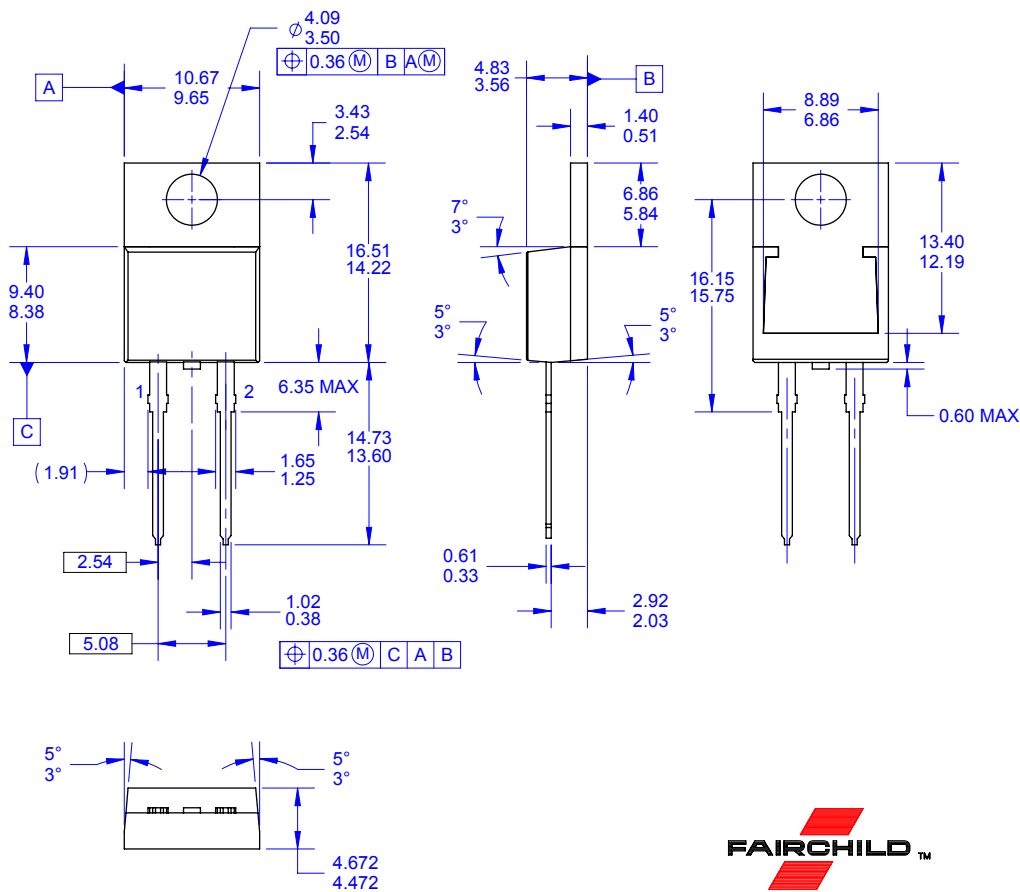


Figure 8. Transient Thermal Response Curve



Mechanical Dimensions

TO-220-2L



NOTES:






- A. PACKAGE REFERENCE: JEDEC TO220,ISSUE K, VARIATION AC,DATED APRIL 2002.
- B. ALL DIMENSIONS ARE IN MILLIMETERS.
- C. DIMENSION AND TOLERANCE AS PER ASME Y14.5-2009.
- D. DIMENSIONS ARE EXCLUSIVE OF BURRS, MOLD FLASH AND TIE BAR PROTRUSIONS.
- E. DRAWING FILE NAME: TO220A02REV04.

Dimensions in Millimeters



**TRADEMARKS**

The following includes registered and unregistered trademarks and service marks, owned by Fairchild Semiconductor and/or its global subsidiaries, and is not intended to be an exhaustive list of all such trademarks.

- |   |   |   |   |
|---|---|---|---|
| AccuPower™  | F-PFS™  | OPTOPLANAR®   |  |
| AttitudeEngine™   | FRFET®  |  | TinyBoost®  |
| Awinda®   | Global Power ResourceSM                         | PowerTrench®  | TinyBuck™   |
| AX-CAP®*  | GreenBridge™                                    | PowerXS™  | TinyCalc™   |
| BitSiC™   | Green FPS™                                      | PowerXS™  | TinyLogic®  |
| Build it Now™   | Green FPS™ e-Series™                            | Programmable Active Droop™  | TINYOPTO™   |
| CorePLUS™   | Gmax™   | QFET®   | TinyPower™  |
| CorePOWER™  | GTO™  | QS™   | TinyPWM™  |
| CROSSVOLT™  | IntelliMAX™                                     | Quiet Series™   | TinyWire™   |
| CTL™  | ISOPLANAR™                                      | RapidConfigure™   | TranSiC™  |
| Current Transfer Logic™   | Marking Small Speakers Sound Louder and Better™ |  | TriFault Detect™  |
| DEUXPEED®   | MegaBuck™                                       | Saving our world, 1mW/W/kW at a time™   | TRUECURRENT®*   |
| Dual Cool™  | MICROCOUPLER™                                   | SignalWise™   | μSerDes™  |
| EcoSPARK®   | MicroFET™                                       | SmartMax™   |  |
| EfficientMax™   | MicroPak™                                       | SMART START™  | UHC®  |
| ESBC™   | MicroPak2™                                      | Solutions for Your Success™   | SPM®  |
|  | MillerDrive™                                    | SPM®  | Ultra FRFET™  |
| Fairchild®  | MotionMax™                                      | STEALTH™  | UniFET™   |
| Fairchild Semiconductor®  | MotionGrid®                                     | SuperFET®   | VCX™  |
| FACT Quiet Series™  | MTi®  | SuperSOT™-3   | VisualMax™  |
| FACT®   | MTx®  | SuperSOT™-6   | VoltagePlus™  |
| FAST®   | MVN®  | SuperSOT™-8   | XS™   |
| FastvCore™  | mWSaver®  | SupreMOS®   | Xsens™  |
| FETBench™   | OptoHiT™  | SyncFET™  | 仙童™   |
| FPS™  | OPTOLOGIC®                                      | Sync-Lock™  |   |

\*Trademarks of System General Corporation, used under license by Fairchild Semiconductor.

**DISCLAIMER**

FAIRCHILD SEMICONDUCTOR RESERVES THE RIGHT TO MAKE CHANGES WITHOUT FURTHER NOTICE TO ANY PRODUCTS HEREIN TO IMPROVE RELIABILITY, FUNCTION, OR DESIGN. TO OBTAIN THE LATEST, MOST UP-TO-DATE DATASHEET AND PRODUCT INFORMATION, VISIT OUR WEBSITE AT [HTTP://WWW.FAIRCHILDSEMI.COM](http://www.fairchildsemi.com). FAIRCHILD DOES NOT ASSUME ANY LIABILITY ARISING OUT OF THE APPLICATION OR USE OF ANY PRODUCT OR CIRCUIT DESCRIBED HEREIN; NEITHER DOES IT CONVEY ANY LICENSE UNDER ITS PATENT RIGHTS, NOR THE RIGHTS OF OTHERS. THESE SPECIFICATIONS DO NOT EXPAND THE TERMS OF FAIRCHILD'S WORLDWIDE TERMS AND CONDITIONS, SPECIFICALLY THE WARRANTY THEREIN, WHICH COVERS THESE PRODUCTS.

**LIFE SUPPORT POLICY**

FAIRCHILD'S PRODUCTS ARE NOT AUTHORIZED FOR USE AS CRITICAL COMPONENTS IN LIFE SUPPORT DEVICES OR SYSTEMS WITHOUT THE EXPRESS WRITTEN APPROVAL OF FAIRCHILD SEMICONDUCTOR CORPORATION.

As used here in:

- Life support devices or systems are devices or systems which, (a) are intended for surgical implant into the body or (b) support or sustain life, and (c) whose failure to perform when properly used in accordance with instructions for use provided in the labeling, can be reasonably expected to result in a significant injury of the user.
- A critical component in any component of a life support, device, or system whose failure to perform can be reasonably expected to cause the failure of the life support device or system, or to affect its safety or effectiveness.

**ANTI-COUNTERFEITING POLICY**

Fairchild Semiconductor Corporation's Anti-Counterfeiting Policy. Fairchild's Anti-Counterfeiting Policy is also stated on our external website, [www.fairchildsemi.com](http://www.fairchildsemi.com), under Sales Support.

Counterfeiting of semiconductor parts is a growing problem in the industry. All manufacturers of semiconductor products are experiencing counterfeiting of their parts. Customers who inadvertently purchase counterfeit parts experience many problems such as loss of brand reputation, substandard performance, failed application, and increased cost of production and manufacturing delays. Fairchild is taking strong measures to protect ourselves and our customers from the proliferation of counterfeit parts. Fairchild strongly encourages customers to purchase Fairchild parts either directly from Fairchild or from Authorized Fairchild Distributors who are listed by country on our web page cited above. Products customers buy either from Fairchild directly or from Authorized Fairchild Distributors are genuine parts, have full traceability, meet Fairchild's quality standards for handling and storage and provide access to Fairchild's full range of up-to-date technical and product information. Fairchild and our Authorized Distributors will stand behind all warranties and will appropriately address and warranty issues that may arise. Fairchild will not provide any warranty coverage or other assistance for parts bought from Unauthorized Sources. Fairchild is committed to combat this global problem and encourage our customers to do their part in stopping this practice by buying direct or from authorized distributors.

**PRODUCT STATUS DEFINITIONS**

**Definition of Terms**

| Datasheet Identification | Product Status        | Definition  |
|--------------------------|-----------------------|---|
| Advance Information      | Formative / In Design | Datasheet contains the design specifications for product development. Specifications may change in any manner without notice.   |
| Preliminary              | First Production      | Datasheet contains preliminary data; supplementary data will be published at a later date. Fairchild Semiconductor reserves the right to make changes at any time without notice to improve design. |
| No Identification Needed | Full Production       | Datasheet contains final specifications. Fairchild Semiconductor reserves the right to make changes at any time without notice to improve the design.   |
| Obsolete                 | Not In Production     | Datasheet contains specifications on a product that is discontinued by Fairchild Semiconductor. The datasheet is for reference information only.  |



## Стандарт Электрон Связь

Мы молодая и активно развивающаяся компания в области поставок электронных компонентов. Мы поставляем электронные компоненты отечественного и импортного производства напрямую от производителей и с крупнейших складов мира.

Благодаря сотрудничеству с мировыми поставщиками мы осуществляем комплексные и плановые поставки широчайшего спектра электронных компонентов.

Собственная эффективная логистика и склад в обеспечивает надежную поставку продукции в точно указанные сроки по всей России.

Мы осуществляем техническую поддержку нашим клиентам и предпродажную проверку качества продукции. На все поставляемые продукты мы предоставляем гарантию .

Осуществляем поставки продукции под контролем ВП МО РФ на предприятия военно-промышленного комплекса России , а также работаем в рамках 275 ФЗ с открытием отдельных счетов в уполномоченном банке. Система менеджмента качества компании соответствует требованиям ГОСТ ISO 9001.

Минимальные сроки поставки, гибкие цены, неограниченный ассортимент и индивидуальный подход к клиентам являются основой для выстраивания долгосрочного и эффективного сотрудничества с предприятиями радиоэлектронной промышленности, предприятиями ВПК и научно-исследовательскими институтами России.

С нами вы становитесь еще успешнее!

### Наши контакты:

**Телефон:** +7 812 627 14 35

**Электронная почта:** [sales@st-electron.ru](mailto:sales@st-electron.ru)

**Адрес:** 198099, Санкт-Петербург,  
Промышленная ул, дом № 19, литера Н,  
помещение 100-Н Офис 331