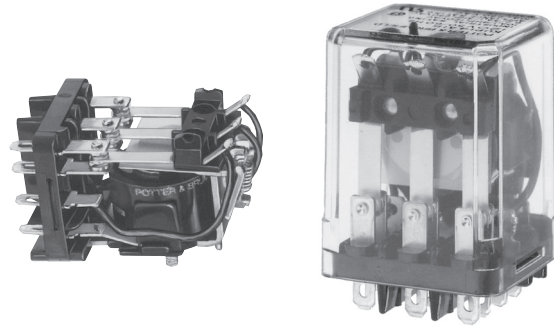


KUMP Series Panel Plug-in Relay

- 15 amp rating
- Contact arrangements 1-3 form A, 1-3 form B, 1-3 form C, 1 form X, 1 form Y, 1 form Z
- Open or enclosed
- Plain or bracket mount dust covers
- Optional indicator lamp and push-to-test button
- Several termination and mounting styles

Typical applications
Hospital beds, semiconductor wafer equipment, boom/bucket lifts.



Approvals

UL E22575; CSA LR15734
Technical data of approved types on request.

Contact Data

| | | |
|-------------------------------|---|---------------|
| Contact arrangement | 1, 2 and 3 form A (NO); 1, 2 and 3 form B (NC); 1, 2 and 3 form C (CO); 1 form X (NO-DM); 1 form Y (NC-DB); 1 form Z (CO-DB-DM) | |
| Rated voltage | 277VAC | |
| Rated current | 15A | |
| Contact material | AgCdO | AgSnOInO |
| Min. recommended contact load | 300mA, 12VDC | 300mA, 12VDC |
| Frequency of operation | 360 ops./hour | 360 ops./hour |
| Operate/releases time max. | 15/10ms | |
| Bounce time max. | 17ms | |

Contact ratings

| Type | Load | Cycles |
|------------------------|--|---|
| UL 508 AgCdO | 15A, 277VAC 1/2HP, 120VAC 10A, 240VAC 10A, 32VDC 5FLA, 15LRA, 250VAC 5A, 120VAC, tungsten 0.5A, 250VAC 0.5A, 125VDC 10FLA, 40LRA, 125VAC 3A, 600VAC 1/2HP, 480VAC 1/2HP, 600VAC 1HP, 480VAC, 3 phase | |
| AgSnOInO | 15A, 277VAC, pf = 0.8 10A, 277VAC, pf = 0.8 | 15x10 ³ 100x10 ³ |
| Mechanical endurance | | 10x10 ⁶ ops. |

Coil Data

| | |
|-------------------------------------|----------------------------|
| Coil voltage range | 5 to 110VDC 6 to 240VAC |
| Coil insulation system according UL | Class B |

Coil versions, DC coil

| Coil code | Rated voltage VDC | Operate voltage VDC | Coil resistance $\Omega \pm 10\%$ | Rated coil power W |
|-----------|-------------------|---------------------|-----------------------------------|--------------------|
| 5 | 5 | 3.75 | 21 | 1.2 |
| 6 | 6 | 4.5 | 32.1 | 1.125 |
| 12 | 12 | 9.0 | 120 | 1.2 |
| 24 | 24 | 18.0 | 472 | 1.25 |
| 48 | 48 | 36.0 | 1800 | 1.3 |
| 110 | 110 | 82.5 | 10000 | 1.25 |

All figures are given for coil without preenergization, at ambient temperature +23°C.

Coil versions, AC coil

| Coil code | Rated voltage VAC | Operate voltage VAC | Coil resistance $\Omega \pm 15\%$ | Rated coil power VA |
|-----------|-------------------|---------------------|-----------------------------------|---------------------|
| 6 | 6 | 5.1 | 4.2 | 2.8 |
| 12 | 12 | 10.2 | 18 | 2.8 |
| 24 | 24 | 20.4 | 72 | 2.8 |
| 120 | 120 | 102.0 | 1700 | 2.9 |
| 240 | 240 | 204.0 | 7200 | 2.9 |

All figures are given for coil without preenergization, at ambient temperature +23°C.

Insulation Data

| | |
|-------------------------------|------------------------|
| Initial dielectric strength | |
| between open contacts | 1200V _{rms} |
| between contact and coil | 2200V _{rms} |
| between adjacent contacts | 2200V _{rms} |
| Initial insulation resistance | |
| between insulated elements | 100M Ω , 500VDC |

Other Data

Material compliance: EU RoHS/ELV, China RoHS, REACH, Halogen content refer to the Product Compliance Support Center at www.te.com/customer-support/rohssupportcenter

| | |
|--------------------------------------|--|
| Ambient temperature | |
| DC coil | Enclosed relays: -45°C to 70°C Open relays: 15°C higher maximum |
| AC coil | Enclosed relays, 3 pole: -45°C to +45°C Enclosed relays, 1 and 2 pole: -45°C to +55°C Open relays: 15°C higher maximum |
| Category of environmental protection | IEC 61810 RT0 - open relay; RTI - dust protected |
| Terminal type | Quick connects (QC), .187, .205 or .250: PCB-THT |
| Terminal retention, push force | |
| QC .205 | 17 lbs for 3s |
| QC .187, QC .250, PCB | 25 lbs for 3s |
| Weight | 85g |
| Packaging/unit | tray/25 pcs., box/150pcs. |

Accessories

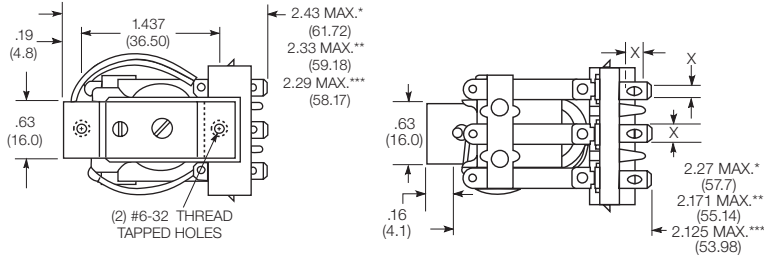
For details see datasheet Sockets and Accessories, KUP Relays

| Product Code | Description |
|--------------|--|
| 27E893 | DIN socket (use 20C318 clip) |
| 27E121 | Track mount socket (use 20C314 clips) |
| 27E043 | Chassis mount/solder eyelet socket (use 20C254 clip) |
| 27E046 | Chassis mount/PCB socket (use 20C254 clip) |
| 27E067 | Chassis mount/quick connect socket (use 20C254 clip) |
| 27E396 | Snap-in/quick connect socket (use 20C254 clip) |

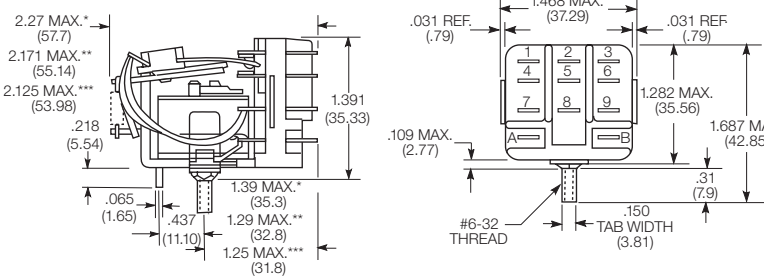
KUMP Series Panel Plug-in Relay (Continued)

Dimensions

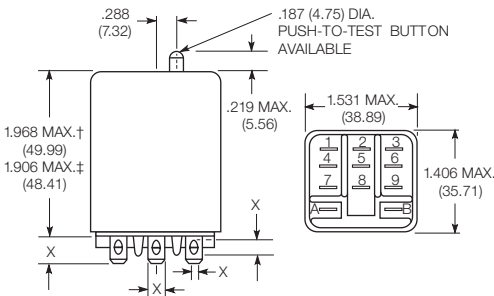
KUM bracket type



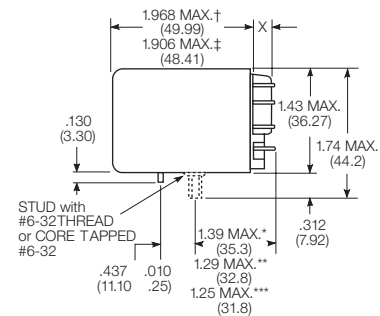
KUM stud type



KUMP plain case

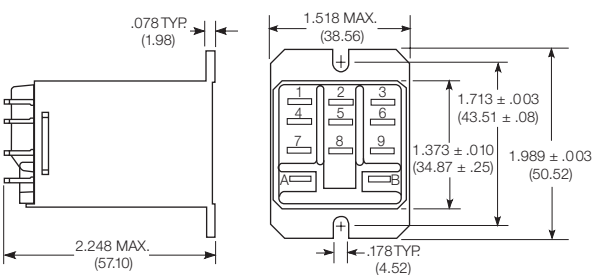


KUMP core / stud mount case



X Is For Terminal Dimensions.
See Terminal Drawings.

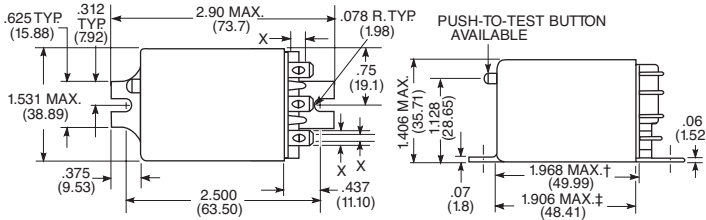
KUMP top flange case



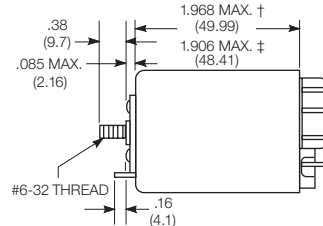
† Dimensions with .250" (6.35mm) terminals.
‡ Dimensions with .187" (4.75mm and .205" 5.21mm) terminals.

*Dimensions with .250" (6.35mm) terminals.
** Dimensions with .110" (2.79mm) or .205"(5.21mm) terminals.
*** Dimensions with .187" (4.75mm) terminals.

KUMP bracket mount case



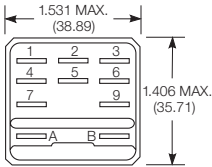
KUMP stud on end case



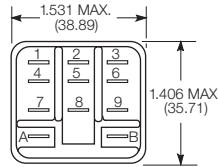
KUMP Series Panel Plug-in Relay (Continued)

Relay front diagrams

Models with 6.35mm (.250) QC terminals

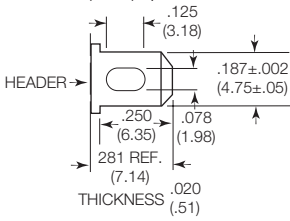


Models with all other terminals

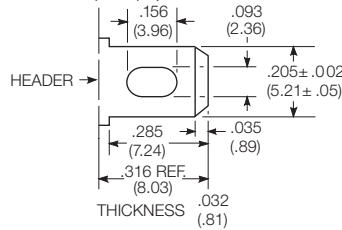


Terminal dimensions

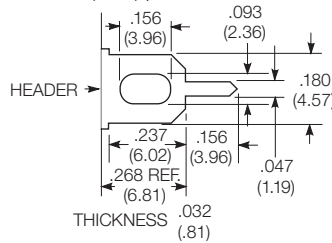
4.75mm (.187) quick connect



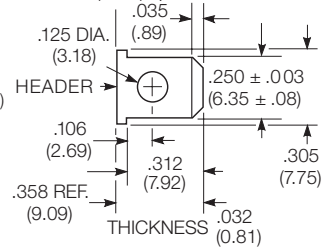
5.21mm (.205) quick connect



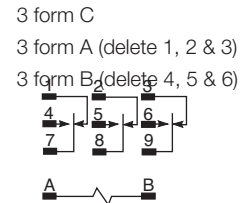
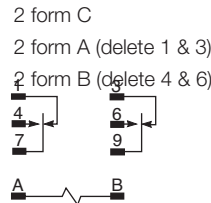
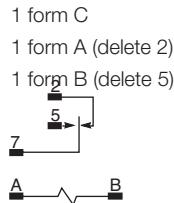
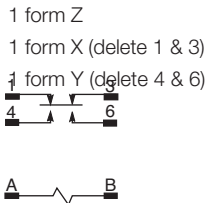
1.19mm (.047) printed circuit



6.35mm (.250) quick connect



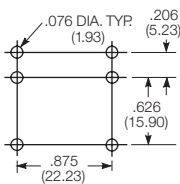
Terminal assignment



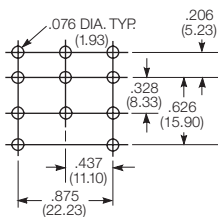
PCB layout

Bottom view on solder pins

1 form Z version
(Omit unnecessary holes for form X and Y types)



3 pole version
(Omit unnecessary holes for form A and 2 pole types)



KUMP Series Panel Plug-in Relay (Continued)

| | | | | | | |
|---|---|---|--|--|--|--|
| Product code structure | | Typical product code KUMP -11 A 1 8 -120 | | | | |
| Type | | | | | | |
| KUM 15A open style relay | | | | | | |
| KUMP 15A enclosed relay | | | | | | |
| Contact arrangement | | | | | | |
| 1 1 form A (1 NO) | 2 1 form B (1 NC) | 3 1 form X (1 NO-DM) | | | | |
| 4 1 form Y (1 NC-DB) | 5 1 form C (1 CO) | 6 1 form Z (1 CO-DB-DM) | | | | |
| 7 2 form A (2 NO) | 8 2 form B (2 NC) | 11 2 form C (2 CO) | | | | |
| 12 3 form A (3 NO) | 13 3 form B (3 NC) | 14 3 form C (3 CO) | | | | |
| Coil Input | | | | | | |
| A AC, 50/60Hz | D DC | | | | | |
| Mounting and options | | | | | | |
| KUM | | | | | | |
| 1 #6-32 mounting stud, 5.54mm (.218in) locating tab | 2 2-hole bracket, #6-32 tapped | | | | | |
| 3 #6-32 tapped core, 3.18mm (.125in) locating tab | 4 #6-32 tapped core, 5.54mm (.218in) locating tab | | | | | |
| 5 #6-32 tapped core, no locating tab | | | | | | |
| KUMP | | | | | | |
| 1 Socket mount (plain) case | | | | | | |
| 2 Socket mount (plain) case with push-to-test button | | | | | | |
| 3 Socket mount (plain) case with indicator lamp ¹⁾ | | | | | | |
| 4 Socket mount (plain) case with indicator lamp and push-to-test button ¹⁾ | | | | | | |
| 5 Bracket mount case | | | | | | |
| 6 Bracket mount case with push-to-test button | | | | | | |
| 7 Bracket mount case with indicator lamp ¹⁾ | | | | | | |
| 8 Bracket mount case with indicator lamp and push-to-test button ¹⁾ | | | | | | |
| 9 Plain case with #6-32 stud and locating tab on end of case | | | | | | |
| A Plain case with #6-32 stud and locating tab | | | | | | |
| B Plain case with #6-32 stud and locating tab, push-to-test button | | | | | | |
| C Plain case with #6-32 stud and locating tab, indicator lamp ¹⁾ | | | | | | |
| D Plain case with #6-32 stud and locating tab, push-to-test button and indicator lamp ¹⁾ | | | | | | |
| E Plain case with #6-32 tapped core and locating tab | | | | | | |
| F Plain case with #6-32 tapped core and locating tab, push-to-test button | | | | | | |
| G Plain case with #6-32 tapped core and locating tab, indicator lamp ¹⁾ | | | | | | |
| H Plain case with #6-32 tapped core and locating tab, push-to-test button and indicator lamp ¹⁾ | | | | | | |
| T Top flange case | | | | | | |
| 1) Indicator lamps are available on models with the following coils: 6-24VAC and VDC, 110VDC and 120-240VAC. Only models with 120-240VAC coils are UL recognized. | | | | | | |
| Terminal and contact material | | | | | | |
| 6 5.21mm (.205in) quick connect/solder; AgCdO | 8 4.75mm (.187in) quick connect/solder; AgCdO | | | | | |
| 9 1.19mm (.047in) PCB, AgCdO | G 6.35mm (.250in) quick connect/solder; AgCdO ²⁾ | | | | | |
| R 5.21mm (.205in) quick connect/solder; AgSnOInO | T 4.75mm (.187in) quick connect/solder; AgSnOInO | | | | | |
| U 1.19mm (.047in) PCB, AgSnOInO | V 6.35mm (.250in) quick connect/solder; AgSnOInO ²⁾ | | | | | |
| 2) 6.35mm (.250in) quick connect/solder terminals are not available on 3 pole relays | | | | | | |
| Coil voltage | | | | | | |
| Coil code: please refer to coil versions table | | | | | | |

| Product Code | Arrangement | Material | Coil | Terminals | Mounting | Part Number |
|----------------|----------------|----------|---------|--------------------|--------------------------|-------------|
| KUMP-11A18-24 | 2 form C; 2 CO | AgCdO | 24 VAC | 4.75mm (.187in) QC | Socket mount, plain case | 6-1393116-3 |
| KUMP-11A18-120 | | | 120 VAC | | | 6-1393116-2 |
| KUMP-11A18-240 | | | 240 VAC | | | 6-1393116-4 |
| KUMP-11D18-12 | | | 12 VDC | | Socket mount, plain case | 7-1393116-1 |
| KUMP-11D18-24 | | | 24 VDC | | | 7-1393116-2 |
| KUMP-11D18-110 | | | 110 VDC | | | 7-1393116-0 |
| KUMP-14A18-24 | 3 form C, 3 CO | | 24 VAC | | Socket mount, plain case | 8-1393116-5 |
| KUMP-14A18-120 | | | 120 VAC | | | 8-1393116-4 |
| KUMP-14D18-12 | | | 12 VDC | | | 9-1393116-0 |
| KUMP-14D18-24 | | | 24 VDC | | | 9-1393116-1 |



**Стандарт
Электрон
Связь**

Мы молодая и активно развивающаяся компания в области поставок электронных компонентов. Мы поставляем электронные компоненты отечественного и импортного производства напрямую от производителей и с крупнейших складов мира.

Благодаря сотрудничеству с мировыми поставщиками мы осуществляем комплексные и плановые поставки широчайшего спектра электронных компонентов.

Собственная эффективная логистика и склад в обеспечивает надежную поставку продукции в точно указанные сроки по всей России.

Мы осуществляем техническую поддержку нашим клиентам и предпродажную проверку качества продукции. На все поставляемые продукты мы предоставляем гарантию .

Осуществляем поставки продукции под контролем ВП МО РФ на предприятия военно-промышленного комплекса России , а также работаем в рамках 275 ФЗ с открытием отдельных счетов в уполномоченном банке. Система менеджмента качества компании соответствует требованиям ГОСТ ISO 9001.

Минимальные сроки поставки, гибкие цены, неограниченный ассортимент и индивидуальный подход к клиентам являются основой для выстраивания долгосрочного и эффективного сотрудничества с предприятиями радиоэлектронной промышленности, предприятиями ВПК и научно-исследовательскими институтами России.

С нами вы становитесь еще успешнее!

Наши контакты:

Телефон: +7 812 627 14 35

Электронная почта: sales@st-electron.ru

Адрес: 198099, Санкт-Петербург,
Промышленная ул, дом № 19, литера Н,
помещение 100-Н Офис 331